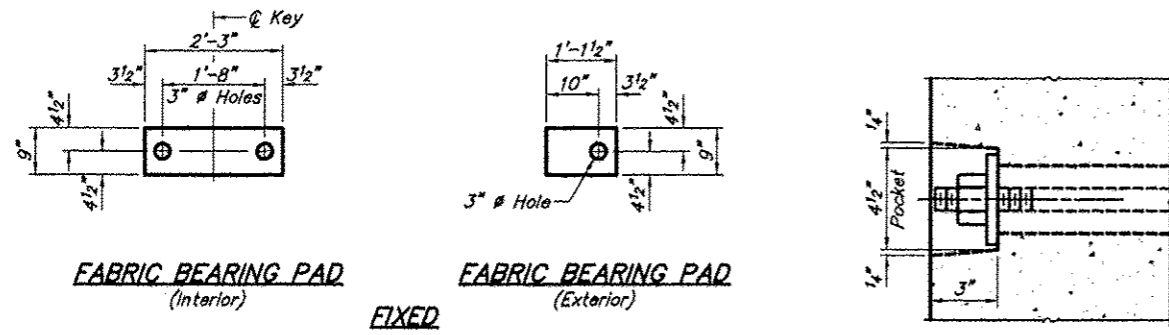
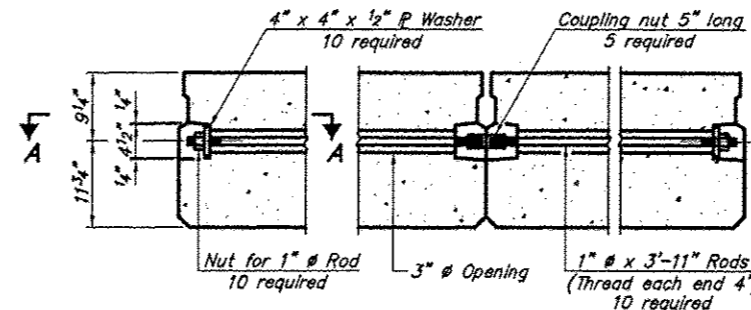


ROUTE	SECTION	COUNTY	TOTAL SHEETS	SHEET NO
TR 44	11-01164-00-BR	ALEXANDER	12	7
PROJECT NO. BROS-0003(126)			CONTRACT NO. 99461	



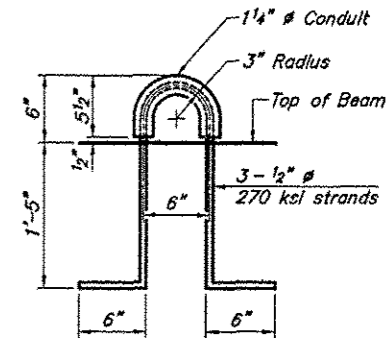
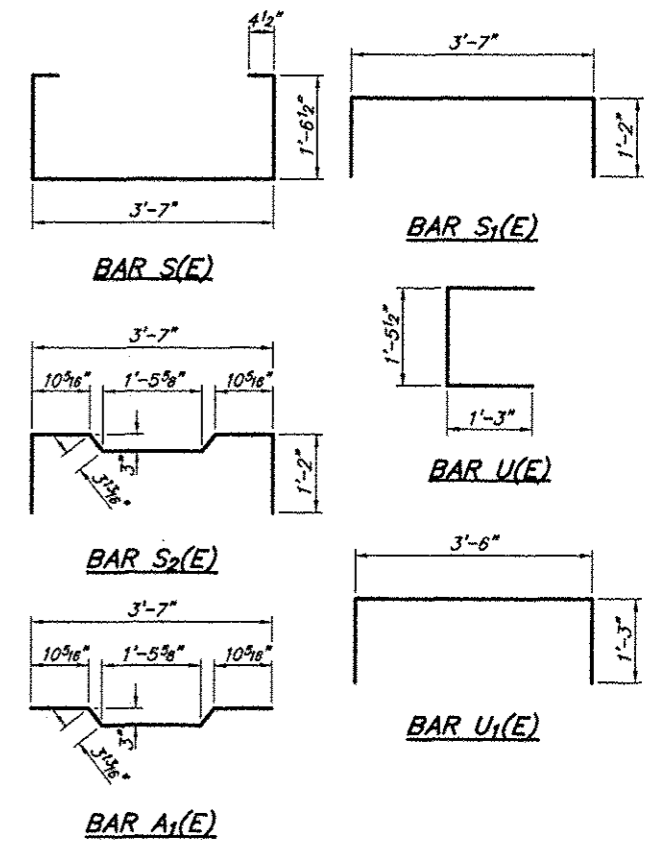
FABRIC BEARING PAD
(Interior) **FABRIC BEARING PAD**
(Exterior)

FIXED
Note: Omit holes when using expansion bearings.

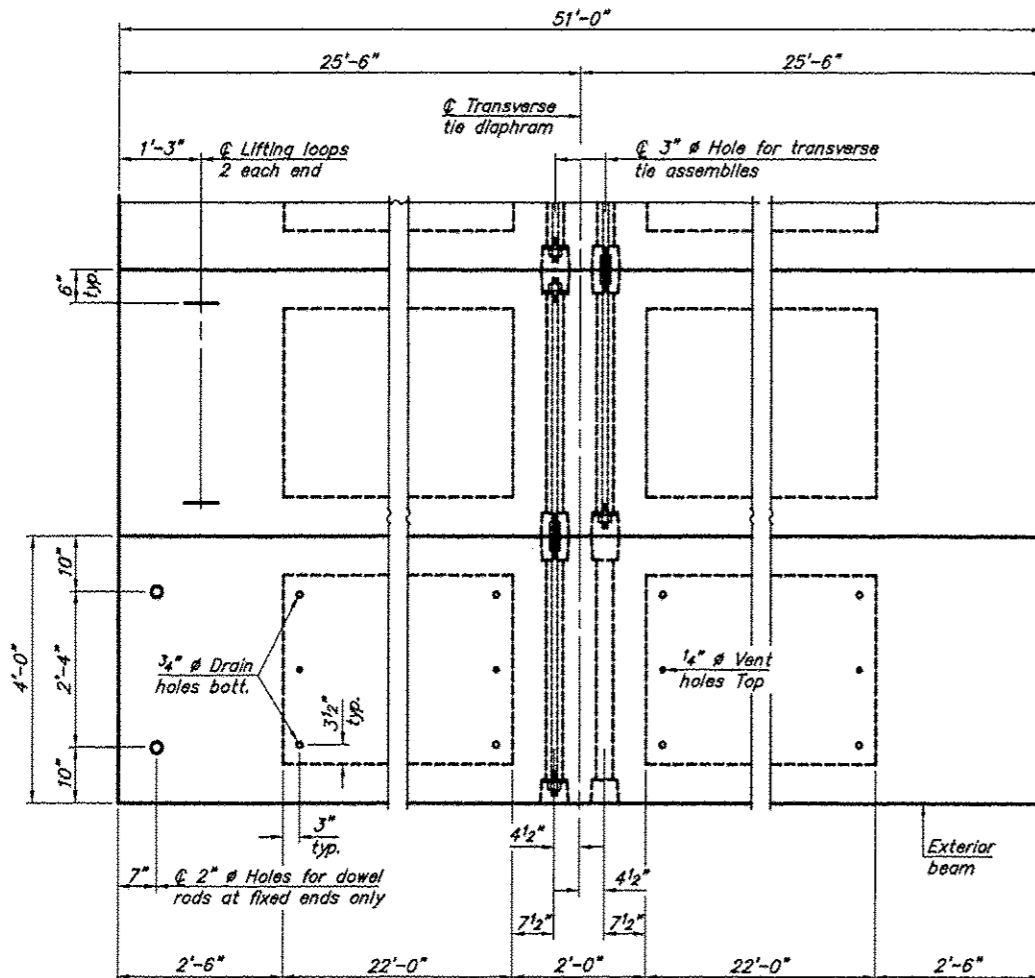


TYPICAL TRANSVERSE TIE ASSEMBLY

SECTION A-A

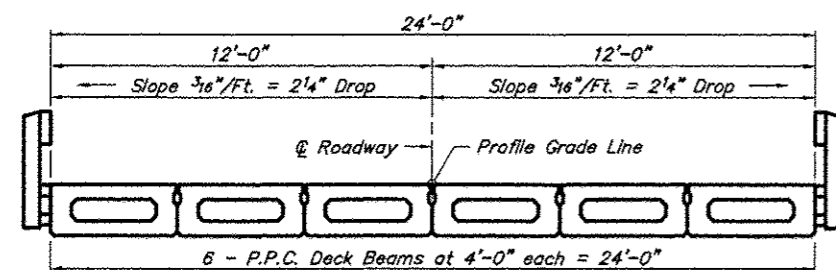


LIFTING LOOP DETAIL



PLAN VIEW

Note: Connect beams in pairs with the transverse tie configuration shown.



CROSS SECTION

NOTES

- Prestressing steel shall be uncoated high strength, low relaxation 7-wire strand, Grade 270. The nominal diameter shall be 1/2" and the nominal cross-sectional area shall be 0.153 sq. in.
- The 1" rods in the transverse tie assembly shall be tightened to a snug fit and the threads set. Pockets on exterior faces of bridge shall be filled with grout after transverse tie assembly is in place.
- Reinforcement bars shall conform to ASTM A 706, Grade 60. (See Special Provisions).
- Two 1/8" fabric adjusting shims of the dimensions of the exterior bearing pad shall be provided for each bearing pad location.
- A minimum 2 1/2" lifting pin shall be used to engage the lifting loops during handling.
- Corrosion Inhibitor, per Article 1020.05(b)(12) and 1021.06 of the Standard Specifications, shall be used in the concrete for precast prestressed concrete deck beams.
- Compressive strength of prestressed concrete, f_c, shall be 6000 psi.
- Compressive strength of prestressed concrete at release, f_{ci}, shall be 5000 psi.

BILL OF MATERIAL

Precast Prestressed Concrete Deck Beams (21" depth)	Sq. Ft.	1224
---	---------	------

21" X 48" PPC DECK BEAM DETAILS
TRIBUTARY TO CIRCLE DITCH
SECTION 11-01164-00-BR
ALEXANDER COUNTY
STRUCTURE NO. 002-3110