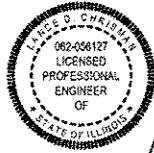


03-08-13 LETTING ITEM 134

STATE OF ILLINOIS  
DEPARTMENT OF TRANSPORTATION  
PLANS FOR PROPOSED IMPROVEMENT  
CITY OF EDWARDSVILLE  
FAP ROUTE 789 (IL ROUTE 159/143)  
SECTION 10-00085-01-LS  
MADISON COUNTY  
JOB NO. C-98-355-10  
PROJECT NO. TE-0008(145)

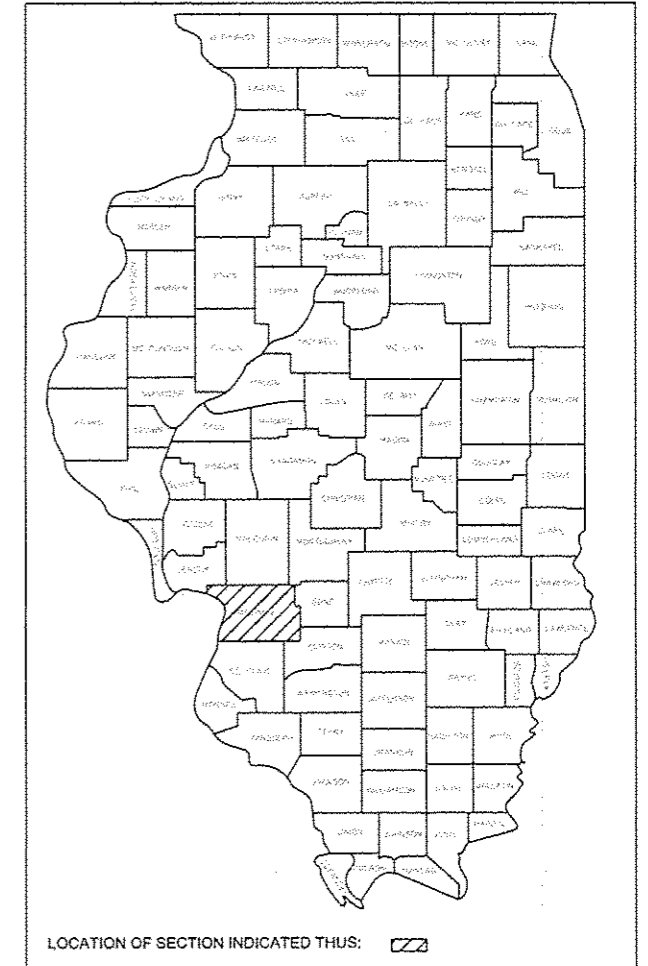
FEDERAL AID PROJECT CONTRACT 97507



*Lance D. Chrisman*  
LANCE D. CHRISMAN  
LICENSE NO. 062-056127  
SHEET RANGE 1-9, & 17-18  
DATE 10/12/12  
EXPIRES: 11-30-2013



*Bruce E. Coleman*  
BRUCE E. COLEMAN  
LICENSE NO. 062-046799  
SHEET RANGE 10-16  
DATE 10/10/12  
EXPIRES: 11-30-2013



INDEX OF SHEETS

- 1 COVER SHEET
- 2 GENERAL NOTES
- 3 SUMMARY OF QUANTITIES
- 4 ROADWAY SCHEDULES
- 5-9 ROADWAY PLANS
- 10-14 STREETSCAPE LIGHTING PLANS
- 15 ELECTRICAL SCHEDULES AND DETAILS
- 16 ELECTRICAL SCHEDULES
- 17 ROADWAY DETAILS & TYPICAL SECTIONS
- 18 ROADWAY DETAILS & ENTRANCE SCHEDULE

STANDARD NO. DESCRIPTION

- 000001-06 STANDARD SYMBOLS, ABBREVIATIONS AND PATTERNS
- 280001-07 TEMPORARY EROSION CONTROL SYSTEMS
- 424001-07 PERPENDICULAR CURB RAMPS FOR SIDEWALKS
- 442201-03 CLASS C AND D PATCHES
- 606001-05 CONCRETE CURB TYPE B AND COMBINATION CONCRETE CURB AND GUTTER
- 701006-04 OFF-ROAD OPERATIONS, 2L, 2W, 15" TO 24" FROM PAVEMENT EDGE
- 701301-04 LANE CLOSURE, 2L, 2W, SHORT TIME OPERATIONS
- 701502-05 URBAN LANE CLOSURE, 2L, 2W, WITH BIDIRECTIONAL LEFT TURN LANE
- 701801-05 LANE CLOSURE MULTILANE 1W OR 2W CROSSWALK OR SIDEWALK CLOSURE
- 701901-02 TRAFFIC CONTROL DEVICES
- 780001-03 TYPICAL PAVEMENT MARKINGS

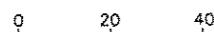
UTILITIES

CITY OF EDWARDSVILLE (WATER AND SEWER)  
200 EAST PARK STREET  
EDWARDSVILLE, IL 62025  
(618)692-7535

CHARTER COMMUNICATIONS (CABLE TV)  
210 WEST DIVISION STREET  
MARYVILLE, IL 62062  
(888)438-2427

AMEREN IP (GAS AND ELECTRIC)  
2600 NORTH CENTER STREET  
MARYVILLE, IL 62062  
(618)348-1294

AT&T (TELEPHONE)  
2100 TROY ROAD  
EDWARDSVILLE, IL 62025  
(618)307-1900

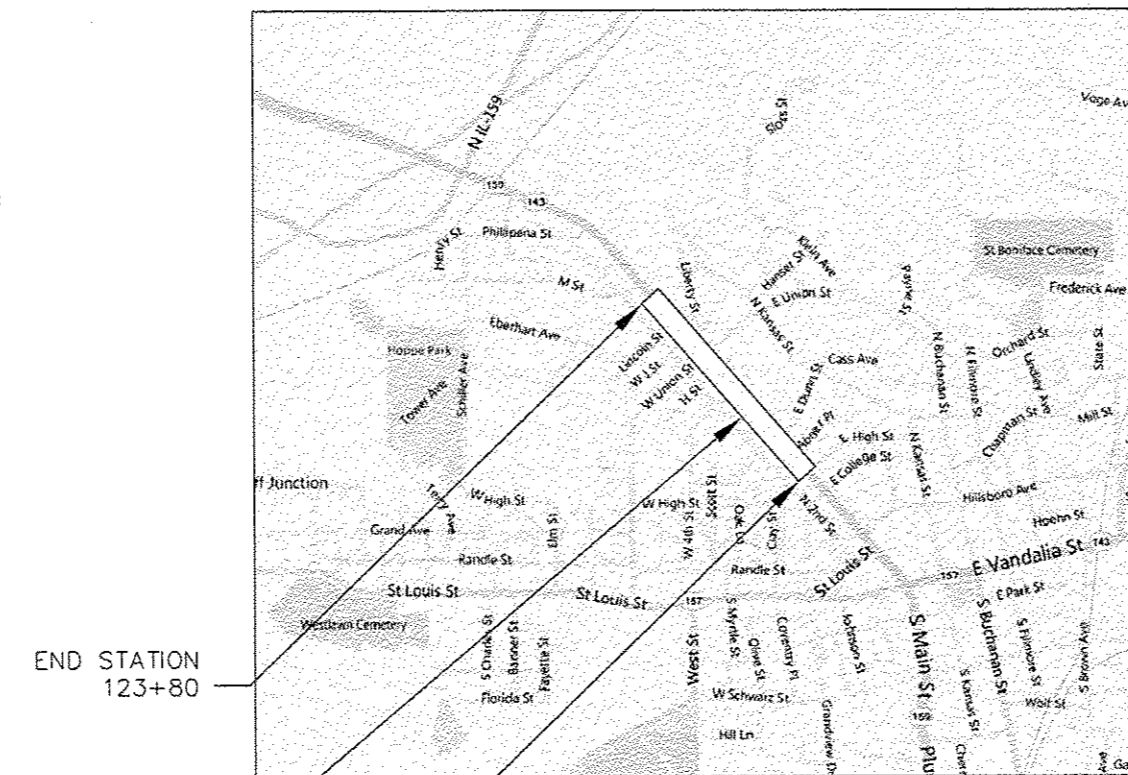


GRAPHIC SCALE  
1" = 20'

GRAPHIC SCALES TO BE USED ARE SHOWN ACCORDINGLY ON EACH PLAN SHEET

J.U.L.I.E.  
JOINT UTILITY LOCATION INFORMATION FOR EXCAVATION  
1-800-892-0123

SCALES:  
PLAN: 1" = 20'



PROJECT LOCATION

END STATION  
123+80

BEGIN STATION  
100+10

LOCATION MAP  
NOT TO SCALE

LENGTH OF PROJECT  
IL ROUTE 159 = 2370 FEET (0.45 MILES)



STATE OF ILLINOIS  
DEPARTMENT OF TRANSPORTATION  
DIVISION OF HIGHWAYS

APPROVED 10/19/2012  
*[Signature]*  
CITY OF EDWARDSVILLE, MAYOR

PASSED January 14, 2013  
*[Signature]*  
DISTRICT 8 ENGINEER OF LOCAL ROADS & STREETS

RELEASING FOR BID  
BASED ON LIMITED  
REVIEW January 14, 2013  
*[Signature]*  
DEPUTY DIRECTOR OF HIGHWAYS, REGION 5 ENGINEER

PRINTED BY AUTHORITY OF THE STATE OF ILLINOIS

PREPARED BY:

**BRiC**  
PARTNERSHIP, LLC  
CONSULTING ENGINEERS



208 East Main Street, Suite 100  
Belleville, Illinois 62220  
618.233.5877 phone  
618.233.5977 fax  
www.kaskaskiaeng.com

PROFESSIONAL REGISTRATIONS  
Illinois Professional Design Firm  
Professional Engineering Group

LICENSE NO.  
184.004773  
20-5080586

**UTILITY DISCLAIMER**

THE ENGINEER AND OWNER DO NOT WARRANT THAT ALL UTILITIES HAVE BEEN ILLUSTRATED ON THESE DOCUMENTS. THE CONTRACTOR IS SOLELY RESPONSIBLE FOR CONTACTING J.U.L.I.E. FOR FIELD VERIFICATION OF ALL UTILITIES ON THE SITE PRIOR TO COMMENCEMENT OF CONSTRUCTION. IF CONTRACTOR DETERMINES THAT CONFIRMED OR DISCOVERED UTILITIES LOCATED WOULD SIGNIFICANTLY AFFECT THE FUNCTION, COST, OR PERFORMANCE OF THE PROJECT, THE CONTRACTOR SHALL IMMEDIATELY CONTACT THE ENGINEER FOR CLARIFICATION AND PROJECT DIRECTION.

**TITLE DISCLAIMER**

IT IS NOT WARRANTED THAT THESE DRAWINGS CONTAIN COMPLETE INFORMATION REGARDING EASEMENTS, RESERVATIONS, RESTRICTIONS, RIGHT-OF-WAYS, BUILDING LINE SETBACKS, AND OTHER ENCUMBRANCES. FOR COMPLETE INFORMATION, A TITLE OPINION OR COMMITMENT FOR TITLE INSURANCE SHOULD BE OBTAINED AND THOROUGHLY REVIEWED.

**GENERAL SPECIFICATIONS**

ALL WORK, INSTALLATION, PROCEDURES, MATERIALS, AND TESTING ASSOCIATED WITH THIS PROJECT SHALL CONFORM TO THE IDOT STANDARD SPECIFICATIONS FOR ROAD AND BRIDGE CONSTRUCTION, (ADOPTED JANUARY 1, 2012); AND THE SUPPLEMENTAL SPECIFICATIONS AND RECURRING SPECIAL PROVISIONS LATEST EDITION (BOTH OF WHICH WILL BE HEREINAFTER REFERRED TO IN THESE DOCUMENTS AS THE STANDARD SPECIFICATIONS (HIGHWAY)).

ALL WORK, INSTALLED, PROCEDURES, MATERIALS, AND TESTING ASSOCIATED WITH THIS PROJECT SHALL CONFORM TO THE ILLINOIS NRCS ILLINOIS URBAN MANUAL, 2010 EDITION, WHICH WILL BE HEREINAFTER REFERRED TO IN THESE DOCUMENTS AS THE STANDARD SPECIFICATIONS (EROSION).

ALL WORK, INSTALLATION, PROCEDURES, AND MATERIALS ASSOCIATED WITH THIS PROJECT SHALL CONFORM TO THE UNITED STATES AMERICANS WITH DISABILITIES ACT.

ALL WORK, INSTALLATION, PROCEDURES, MATERIALS, TESTING, AND INSPECTION SHALL CONFORM TO THE STATE, MUNICIPAL, AND LOCAL UNITS OF GOVERNMENT HAVING JURISDICTION OVER THIS PROJECT.

**EROSION AND SEDIMENTATION CONTROL**

ALL WORK, INSTALLATION, PROCEDURES, MATERIALS, TESTING, ETC., FOR EROSION AND SEDIMENTATION CONTROL SHALL CONFORM TO THE STANDARD SPECIFICATIONS (EROSION).

ANY EROSION AND SEDIMENT CONTROL PLAN CONTAINED IN THE PROJECT PLANS SHOULD BE CONSIDERED A GENERAL GUIDELINE TO BE UTILIZED FOR EROSION CONTROL PREVENTION. IT IS THE CONTRACTOR'S RESPONSIBILITY TO ENSURE THAT ALL EROSION AND DISPLACED SEDIMENT DOES NOT MIGRATE OFF SITE. IF UNEXPECTED EROSION OR SEDIMENTATION OCCURS, OR IF THE EROSION PLAN STRUCTURES BECOME DAMAGED, THE CONTRACTOR SHALL PROVIDE SUFFICIENT MEASURES TO REPAIR, REPLACE, OR INSTALL EROSION CONTROL STRUCTURES TO ENSURE OFF-SITE DAMAGE DOES NOT OCCUR. ANY SEDIMENT OR EROSION DAMAGE WHICH OCCURS OFF-SITE SHALL BE REPAIRED BY THE CONTRACTOR AT HIS EXPENSE.

DURING CONSTRUCTION, THE CONTRACTOR SHALL TAKE PRECAUTION TO ENSURE THAT SEDIMENTATION DAMAGE WILL NOT OCCUR. THE CONTRACTOR SHALL RESTRICT THE AMOUNT OF LAND AREA GRADED AT ANY ONE TIME TO A MINIMUM. IT IS RECOMMENDED DURING AND AFTER GRADING, THAT A TEMPORARY VEGETATIVE COVER BE ESTABLISHED TO PROTECT THE BARE SOIL SURFACE. ALL WORK, INSTALLATION, PROCEDURES, MATERIALS, AND TESTING ASSOCIATED WITH THIS PROJECT SHALL CONFORM TO THE ILLINOIS NRCS ILLINOIS URBAN MANUAL, 2002 EDITION, WHICH WILL BE HEREINAFTER REFERRED TO IN THESE DOCUMENTS AS THE STANDARD SPECIFICATIONS (EROSION).

ALL EROSION CONTROL AND SEDIMENTATION CONTROL MEASURES SHALL BE THE RESPONSIBILITY OF THE CONTRACTOR TO INSTALL AND MAINTAIN. THE MAINTENANCE OF THESE EROSION CONTROL AND SEDIMENTATION CONTROL MEASURES SHALL BE CONSIDERED INCIDENTAL TO THE DEVICES THEMSELVES. MAINTENANCE SHALL CONTINUE TO BE THE RESPONSIBILITY OF THE CONTRACTOR UNTIL THE OWNER TAKES OWNERSHIP OF THE IMPROVEMENTS. AN NPDES PERMIT IS NOT REQUIRED.

**EARTHWORK**

ALL WORK, INSTALLATION, PROCEDURES, MATERIALS, TESTING, ETC. FOR EARTHWORK SHALL CONFORM TO THE IDOT STANDARD SPECIFICATIONS (HIGHWAY).

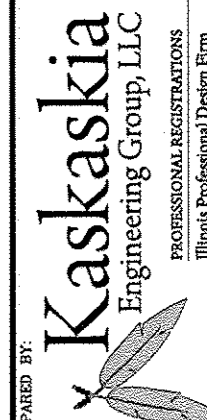
CLEARING (OTHER THAN TREE REMOVAL) AND GRUBBING IS TO BE CONSIDERED INCIDENTAL TO THE CONTRACT PRICE. ORGANIC DEBRIS CLEARED AND GRUBBED ON THE SITE SHALL BE EITHER REMOVED FROM THE SITE OR THE CONTRACTOR SHALL OBTAIN AN IEPA BURNING PERMIT IF ACCEPTABLE TO THE LOCAL GOVERNMENTAL UNITS HAVING JURISDICTION OVER THIS PROJECT.

ALL TOPSOIL AND ORGANIC MATERIAL SHALL BE REMOVED FROM AREAS WHICH ARE TO BE OCCUPIED BY STRUCTURES, PAVEMENT, SIDEWALKS, ETC. ACCEPTABLE MATERIAL REMOVED FOR THE PROPOSED SIDEWALK IMPROVEMENTS SHALL BE USED AS TOPSOIL FOR GRADING ADJACENT TO THE PROPOSED SIDEWALK IMPROVEMENTS.

THE FOLLOWING ITEMS AND APPROXIMATE QUANTITIES ARE INCLUDED IN THE "SCHEDULE OF PRICES" IN ORDER TO ESTABLISH A UNIT COST FOR WORK WHICH MAY BE REQUIRED TO CONSTRUCT THIS SECTION. THE ACTUAL QUANTITY OF EACH ITEM SHALL BE DETERMINED BY THE ENGINEER IN THE FIELD.

|                                      |         |
|--------------------------------------|---------|
| AGGREGATE FOR TEMPORARY ACCESS       | 155 TON |
| INCIDENTAL HOT-MIX ASPHALT SURFACING | 5 TON   |

208 East Main Street, Suite 100  
 Belleville, Illinois 62220  
 618.233.5977 phone  
 618.233.5977 fax  
 www.kaskaskiaeng.com



PROFESSIONAL REGISTRATIONS  
 Illinois Professional Design Firm  
 Professional Engineering Group

LICENSE NO.  
 184,004,773  
 20-5080586

PREPARED BY:

GENERAL NOTES

PROJECT TITLE:  
 SEC 10-00085-01-LS  
 NORTH MAIN STREET STREETSCAPE  
 CITY OF EDWARDSVILLE, ILLINOIS

SHEET TITLE:

|                            |   |
|----------------------------|---|
| DESIGNED BY: LDC           | 2 |
| DRAWN BY: SMS              |   |
| CHECKED BY: GEB            |   |
| DATE OF PRE-FINAL: 8/17/12 |   |
| DATE OF FINAL: 10/12/12    |   |

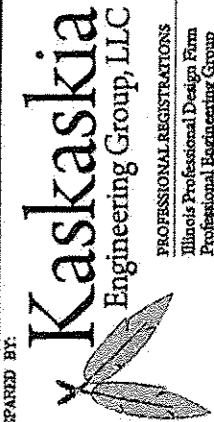
SHEET NO. 2 OF 18 SHEETS  
 PROJECT NUMBER 09-1074.01

### SUMMARY OF QUANTITIES

| CODE NO.   | ITEM  | UNIT  | TOTAL QUANTITIES | ROADWAY QUANTITIES | LIGHTING QUANTITIES |
|------------|---|-------|------------------|--------------------|---------------------|
|            |   |       |                  | STE 80/20          | STE 50/50           |
| 25000110   | SEEDING, CLASS 1A   | ACRE  | 0.25             | 0.25               |                     |
| * 40201000 | AGGREGATE FOR TEMPORARY ACCESS                              | TON   | 155              | 155                |                     |
| * 40800050 | INCIDENTAL HOT-MIX ASPHALT SURFACING                        | TON   | 5                | 5                  |                     |
| * 42300200 | PORTLAND CEMENT CONCRETE DRIVEWAY PAVEMENT, 6 INCH          | SQ YD | 12               | 12                 |                     |
| * 42300400 | PORTLAND CEMENT CONCRETE DRIVEWAY PAVEMENT, 8 INCH          | SQ YD | 347              | 347                |                     |
| * 42400200 | PORTLAND CEMENT CONCRETE SIDEWALK 5 INCH                    | SQ FT | 7,618            | 7,618              |                     |
| * 42400800 | DETECTABLE WARNINGS   | SQ FT | 151              | 151                |                     |
| * 44000200 | DRIVEWAY PAVEMENT REMOVAL                                   | SQ YD | 368              | 368                |                     |
| * 44000500 | COMBINATION CURB AND GUTTER REMOVAL                         | FOOT  | 886              | 886                |                     |
| * 44000600 | SIDEWALK REMOVAL  | SQ FT | 6,615            | 6,615              |                     |
| * 44201785 | CLASS D PATCHES, TYPE I, 12 INCH                            | SQ YD | 6                | 6                  |                     |
| * 44201789 | CLASS D PATCHES, TYPE II, 12 INCH                           | SQ YD | 8                | 8                  |                     |
| * 60600605 | CONCRETE CURB, TYPE B                                       | FOOT  | 18               | 18                 |                     |
| 67100100   | MOBILIZATION  | L SUM | 1                | 1                  |                     |
| * 78000600 | THERMOPLASTIC PAVEMENT MARKING - LINE 12"                   | FOOT  | 487              | 487                |                     |
| * 78000650 | THERMOPLASTIC PAVEMENT MARKING - LINE 24"                   | FOOT  | 282              | 282                |                     |
| 80400100   | ELECTRIC SERVICE INSTALLATION                               | EACH  | 1                |                    | 1                   |
| 81028350   | UNDERGROUND CONDUIT, PVC, 2" DIA.                           | FOOT  | 3,100            |                    | 3,100               |
| 81702110   | ELECTRIC CABLE IN CONDUIT, 600V (XLP-TYPE USE) 1/C NO. 10   | FOOT  | 8,700            |                    | 8,700               |
| 81702120   | ELECTRIC CABLE IN CONDUIT, 600V (XLP-TYPE USE) 1/C NO. 8    | FOOT  | 19,500           |                    | 19,500              |
| 81702130   | ELECTRIC CABLE IN CONDUIT, 600V (XLP-TYPE USE) 1/C NO. 6    | FOOT  | 4,100            |                    | 4,100               |
| 81702140   | ELECTRIC CABLE IN CONDUIT, 600V (XLP-TYPE USE) 1/C NO. 4    | FOOT  | 7,900            |                    | 7,900               |
| 81702150   | ELECTRIC CABLE IN CONDUIT, 600V (XLP-TYPE USE) 1/C NO. 2    | FOOT  | 4,200            |                    | 4,200               |
| 84200500   | REMOVAL OF LIGHTING UNIT, SALVAGE                           | EACH  | 1                |                    | 1                   |
| * X6064200 | COMBINATION CONCRETE CURB AND GUTTER, TYPE B-6.12 (SPECIAL) | FOOT  | 921              | 921                |                     |
| X7010216   | TRAFFIC CONTROL AND PROTECTION, (SPECIAL)                   | L SUM | 1                | 1                  |                     |
| X8140105   | HANDHOLE (SPECIAL)  | EACH  | 38               |                    | 38                  |
| X8360310   | LIGHT POLE FOUNDATION, 30" DIAMETER, SPECIAL                | FOOT  | 140              |                    | 140                 |
| XX007393   | DECORATIVE LIGHT TYPE A                                     | EACH  | 56               |                    | 56                  |
| XX007394   | DECORATIVE LIGHT TYPE B                                     | EACH  | 20               |                    | 20                  |
| X8040102   | ELECTRIC SERVICE INSTALLATION, SPECIAL                      | EACH  | 1                |                    | 1                   |

\* DENOTES SPECIALTY ITEM

PREPARED BY:



**Kaskaskia**  
Engineering Group, LLC

PROFESSIONAL REGISTRATIONS  
Illinois Professional Design Firm  
Professional Engineering Group

208 East Main Street, Suite 100  
Bellefonte, Illinois 61220  
618.233.5977 phone  
618.233.5977 fax  
www.kaskaskiaeng.com

LICENSE NO.  
184-004773  
20-5080386

SUMMARY OF QUANTITIES

PROJECT TITLE:  
SEC 10-00085-01-LS  
NORTH MAIN STREET STREETSCAPE  
CITY OF EDWARDSVILLE, ILLINOIS

|                           |          |       |
|---------------------------|----------|-------|
| DESIGNED BY:              | LDC      | SHEET |
| DRAWN BY:                 | SMS      | 3     |
| CHECKED BY:               | GEB      |       |
| DATE OF PRE-FINAL:        | 8/17/12  |       |
| DATE OF FINAL:            | 10/12/12 |       |
| SHEET NO. 3 OF 12 SHEETS  |          |       |
| PROJECT NUMBER 09-1074.01 |          |       |

**CURB & GUTTER SCHEDULE**

| STATION      | STATION | OFFSET | COMB CURB<br>GUTTER<br>REM<br>(FOOT) | CONC CURB<br>TB<br>(FOOT) | COMB CC&G<br>TB.12 SPL<br>(FOOT) |
|--------------|---------|--------|--------------------------------------|---------------------------|----------------------------------|
| 100+00       | 102+83  | LT     | 251                                  |                           | 283                              |
| 102+83       | 105+25  | LT     | 114                                  |                           | 114                              |
| 105+25       | 107+66  | LT     | 146                                  |                           | 149                              |
| 107+66       | 112+53  | LT     | 226                                  |                           | 226                              |
| 112+53       | 114+94  | LT     |                                      |                           |                                  |
| 114+94       | 117+35  | LT     | 104                                  |                           | 104                              |
| 117+35       | 122+17  | LT     | 45                                   | 18                        | 45                               |
| 122+17       | 124+09  | LT     |                                      |                           |                                  |
| <b>TOTAL</b> |         |        | <b>886</b>                           | <b>18</b>                 | <b>921</b>                       |

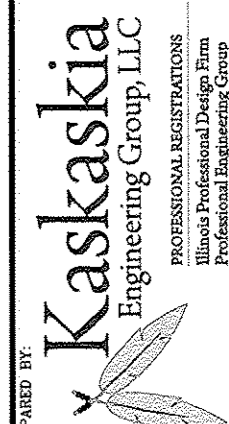
**PAVEMENT MARKING SCHEDULE**

| SIDESTREET      | THPL PVT MK<br>LINE 12<br>(FOOT) | THPL PVT MK<br>LINE 24<br>(FOOT) |
|-----------------|----------------------------------|----------------------------------|
| W. HIGH STREET  | 49                               | 30                               |
| W. ABNER STREET | 51                               | 30                               |
| W. DUNN STREET  | 53                               | 36                               |
| W E STREET      | 54                               | 30                               |
| W. 4TH STREET   | 62                               | 36                               |
| W. H STREET     | 55                               | 30                               |
| W. UNION STREET | 53                               | 30                               |
| LINCOLN STREET  | 52                               | 30                               |
| W. L STREET     | 58                               | 30                               |
| <b>TOTAL</b>    | <b>487</b>                       | <b>282</b>                       |

**SIDEWALK SCHEDULE**

| STATION      | STATION | OFFSET | SIDEWALK<br>REM<br>(SQ FT) | PC CONC<br>SIDEWALK 5<br>(SQ FT) | DETECTABLE<br>WARNINGS<br>(SQ FT) |
|--------------|---------|--------|----------------------------|----------------------------------|-----------------------------------|
| 100+00       | 102+83  | LT     | 1,079                      | 1,209                            | 49                                |
| 100+00       | 102+83  | RT     | 120                        | 120                              |                                   |
| 102+83       | 105+25  | LT     | 818                        | 1,045                            | 42                                |
| 105+25       | 107+66  | LT     | 744                        | 888                              | 38                                |
| 105+25       | 107+66  | RT     | 30                         | 30                               |                                   |
| 107+66       | 112+53  | LT     | 665                        | 850                              | 22                                |
| 107+66       | 110+09  | RT     | 31                         | 31                               |                                   |
| 112+53       | 114+94  | LT     | 1,148                      | 1,148                            |                                   |
| 114+94       | 117+35  | LT     | 640                        | 662                              |                                   |
| 117+35       | 122+17  | LT     | 523                        | 518                              |                                   |
| 117+35       | 120+02  | RT     | 78                         | 78                               |                                   |
| 120+02       | 124+50  | RT     | 220                        | 220                              |                                   |
| 122+17       | 124+09  | LT     | 519                        | 819                              |                                   |
| <b>TOTAL</b> |         |        | <b>6,615</b>               | <b>7,618</b>                     | <b>151</b>                        |

208 East Main Street, Suite 100  
 Bellville, Illinois 62220  
 618.233.5877 phone  
 618.233.5977 fax  
 www.kaskaskiaeng.com



PROFESSIONAL REGISTRATIONS  
 Illinois Professional Design Firm  
 Professional Engineering Group

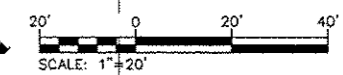
PREPARED BY:  
**Kaskaskia Engineering Group, LLC**

SHEET TITLE:  
**ROADWAY SCHEDULES**

PROJECT TITLE:  
**SEC 10-00085-01-LS  
 NORTH MAIN STREET STREETScape  
 CITY OF EDWARDSVILLE, ILLINOIS**

DESIGNED BY: LDC  
 DRAWN BY: SMS  
 CHECKED BY: GEB  
 DATE OF PRE-FINAL: 8/17/12  
 DATE OF FINAL: 10/12/12  
 SHEET NO. 4 OF 18 SHEETS  
 PROJECT NUMBER 09-1074-01

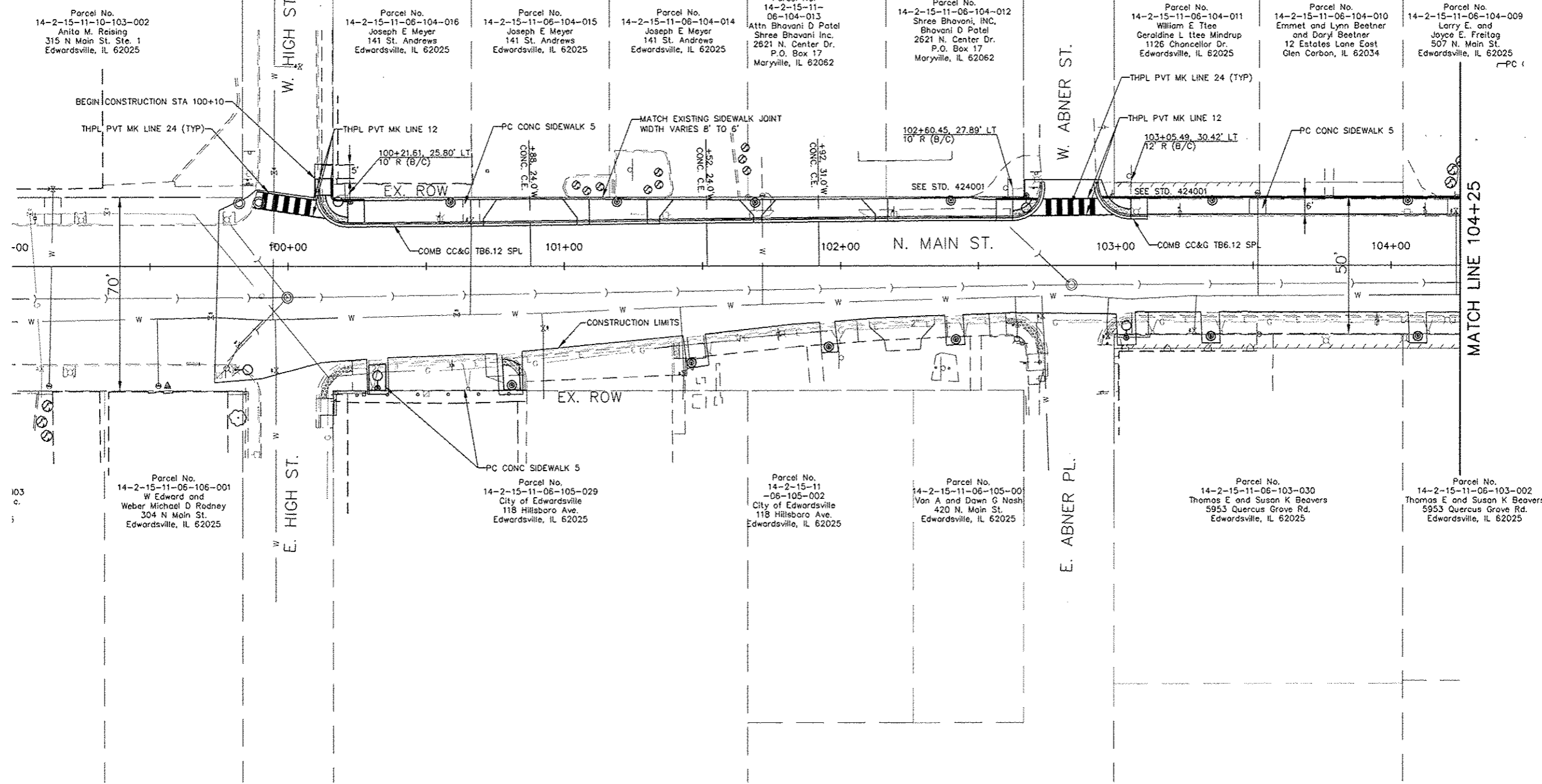
FILE: P:\09-1074-Edwardsville N Main St Streetscape\10\_CADD\CADD Sheets\09-1074-ITEP\_Schedules.dwg



208 East Main Street, Suite 100  
Belleville, Illinois 62220  
618.233.5877 phone  
618.233.5977 fax  
www.kaskaskiaeng.com  
LICENSE NO. 184.004773  
20-5080586

**Kaskaskia**  
Engineering Group, LLC  
PROFESSIONAL REGISTRATIONS  
Illinois Professional Design Firm  
Professional Engineering Group

PREPARED BY:



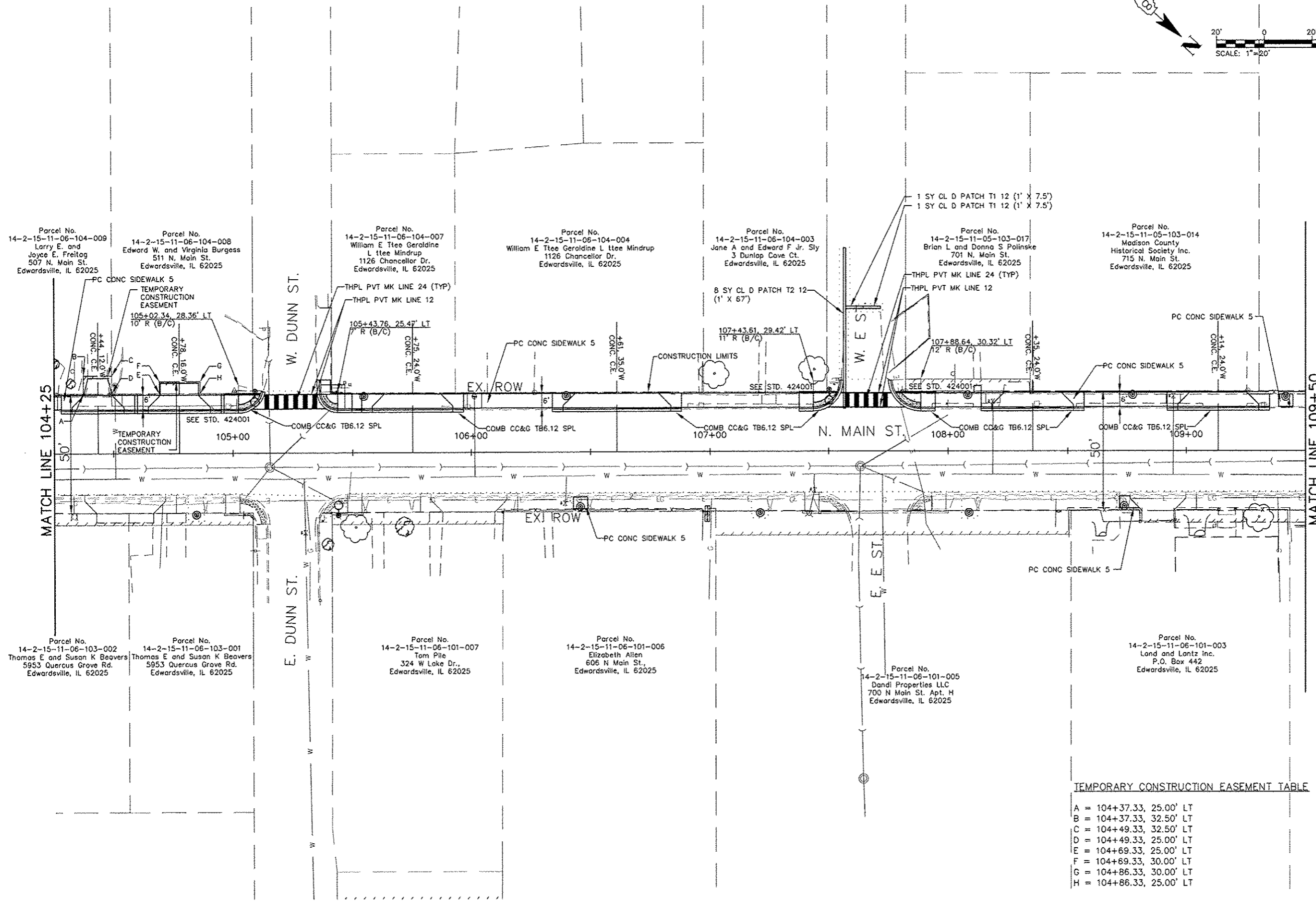
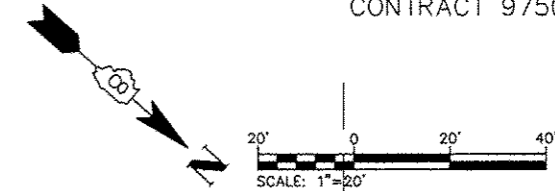
MATCH LINE 104+25

ROADWAY PLANS

PROJECT TITLE:  
SEC 10-00085-01-LS  
NORTH MAIN STREET STREETScape  
CITY OF EDWARDSVILLE, ILLINOIS

SHEET TITLE:

|                           |          |       |
|---------------------------|----------|-------|
| DESIGNED BY:              | SMS      | SHEET |
| DRAWN BY:                 | SMS      | 5     |
| CHECKED BY:               | LDC      |       |
| DATE OF PRE-FINAL:        | 8/17/12  |       |
| DATE OF FINAL:            | 10/12/12 |       |
| SHEET NO. 5 OF 18 SHEETS  |          |       |
| PROJECT NUMBER 02-1074.01 |          |       |



Parcel No. 14-2-15-11-06-104-009  
 Larry E. and Joyce E. Freitag  
 507 N. Main St.  
 Edwardsville, IL 62025

Parcel No. 14-2-15-11-06-104-008  
 Edward W. and Virginia Burgess  
 511 N. Main St.  
 Edwardsville, IL 62025

Parcel No. 14-2-15-11-06-104-007  
 William E Ttee Geraldine L ttee Mindrup  
 1126 Chancellor Dr.  
 Edwardsville, IL 62025

Parcel No. 14-2-15-11-06-104-004  
 William E Ttee Geraldine L ttee Mindrup  
 1126 Chancellor Dr.  
 Edwardsville, IL 62025

Parcel No. 14-2-15-11-06-104-003  
 Jane A and Edward F Jr. Sly  
 J Dunlap Cove Ct.  
 Edwardsville, IL 62025

Parcel No. 14-2-15-11-05-103-017  
 Brian L and Donna S Polinske  
 701 N. Main St.  
 Edwardsville, IL 62025

Parcel No. 14-2-15-11-05-103-014  
 Madison County Historical Society Inc.  
 715 N. Main St.  
 Edwardsville, IL 62025

Parcel No. 14-2-15-11-06-103-002  
 Thomas E and Susan K Beavers  
 5953 Quercus Grove Rd.  
 Edwardsville, IL 62025

Parcel No. 14-2-15-11-06-103-001  
 Thomas E and Susan K Beavers  
 5953 Quercus Grove Rd.  
 Edwardsville, IL 62025

Parcel No. 14-2-15-11-06-101-007  
 Tom Pile  
 324 W Lake Dr.,  
 Edwardsville, IL 62025

Parcel No. 14-2-15-11-06-101-006  
 Elizabeth Allen  
 606 N Main St.,  
 Edwardsville, IL 62025

Parcel No. 14-2-15-11-06-101-005  
 Dandi Properties LLC  
 700 N Main St. Apt. H  
 Edwardsville, IL 62025

Parcel No. 14-2-15-11-06-101-003  
 Land and Lantz Inc.  
 P.O. Box 442  
 Edwardsville, IL 62025

TEMPORARY CONSTRUCTION EASEMENT TABLE

|   |   |                      |
|---|---|----------------------|
| A | = | 104+37.33, 25.00' LT |
| B | = | 104+37.33, 32.50' LT |
| C | = | 104+49.33, 32.50' LT |
| D | = | 104+49.33, 25.00' LT |
| E | = | 104+69.33, 25.00' LT |
| F | = | 104+69.33, 30.00' LT |
| G | = | 104+86.33, 30.00' LT |
| H | = | 104+86.33, 25.00' LT |

208 East Main Street, Suite 100  
 Ballwin, Illinois 62220  
 618.333.5877 phone  
 618.333.5777 fax  
 www.kaskasiaeng.com

**Kaskasia**  
 Engineering Group, LLC

PROFESSIONAL REGISTRATIONS  
 Illinois Professional Design Firm  
 Professional Engineering Group

LICENSE NO. 194-004773  
 20-5080566

ROADWAY PLANS

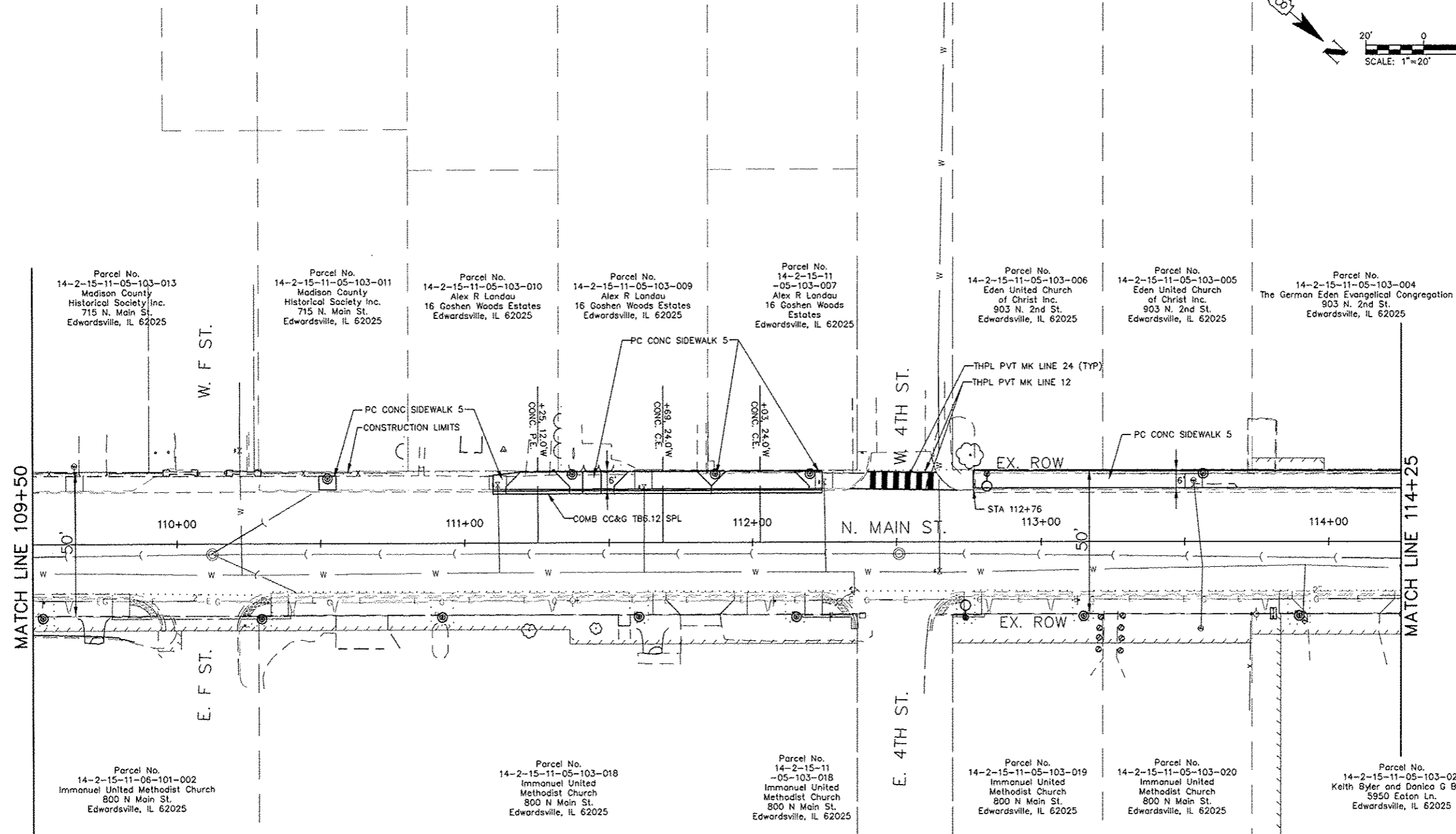
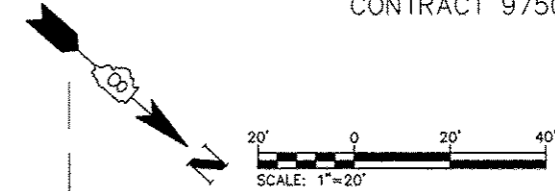
SEC 10-00085-01-LS

NORTH MAIN STREET STREETSCAPE  
 CITY OF EDWARDSVILLE, ILLINOIS

SHEET TITLE: ROADWAY PLANS

PROJECT TITLE: SEC 10-00085-01-LS NORTH MAIN STREET STREETSCAPE CITY OF EDWARDSVILLE, ILLINOIS

|                            |       |
|----------------------------|-------|
| DESIGNED BY: SMS           | SHEET |
| DRAWN BY: SMS              | 6     |
| CHECKED BY: LDC            |       |
| DATE OF PRE-FINAL: 8/17/12 |       |
| DATE OF FINAL: 10/12/12    |       |
| SHEET NO. 6 OF 13 SHEETS   |       |
| PROJECT NUMBER 09-1074.01  |       |



Parcel No.  
14-2-15-11-05-103-013  
Madison County  
Historical Society Inc.  
715 N. Main St.  
Edwardsville, IL 62025

Parcel No.  
14-2-15-11-05-103-011  
Madison County  
Historical Society Inc.  
715 N. Main St.  
Edwardsville, IL 62025

Parcel No.  
14-2-15-11-05-103-010  
Alex R Landau  
16 Goshen Woods Estates  
Edwardsville, IL 62025

Parcel No.  
14-2-15-11-05-103-009  
Alex R Landau  
16 Goshen Woods Estates  
Edwardsville, IL 62025

Parcel No.  
14-2-15-11-05-103-007  
Alex R Landau  
16 Goshen Woods Estates  
Edwardsville, IL 62025

Parcel No.  
14-2-15-11-05-103-006  
Eden United Church  
of Christ Inc.  
903 N. 2nd St.  
Edwardsville, IL 62025

Parcel No.  
14-2-15-11-05-103-005  
Eden United Church  
of Christ Inc.  
903 N. 2nd St.  
Edwardsville, IL 62025

Parcel No.  
14-2-15-11-05-103-004  
The German Eden Evangelical Congregation  
903 N. 2nd St.  
Edwardsville, IL 62025

Parcel No.  
14-2-15-11-06-101-002  
Immanuel United Methodist Church  
800 N Main St.  
Edwardsville, IL 62025

Parcel No.  
14-2-15-11-05-103-018  
Immanuel United  
Methodist Church  
800 N Main St.  
Edwardsville, IL 62025

Parcel No.  
14-2-15-11-05-103-018  
Immanuel United  
Methodist Church  
800 N Main St.  
Edwardsville, IL 62025

Parcel No.  
14-2-15-11-05-103-019  
Immanuel United  
Methodist Church  
800 N Main St.  
Edwardsville, IL 62025

Parcel No.  
14-2-15-11-05-103-020  
Immanuel United  
Methodist Church  
800 N Main St.  
Edwardsville, IL 62025

Parcel No.  
14-2-15-11-05-103-021  
Keith Byler and Donica G Byler  
5950 Eaton Ln.  
Edwardsville, IL 62025



PREPARED BY:

208 East Main Street, Suite 100  
Bellefonte, Illinois 62220  
618.233.5877 Phone  
618.233.5977 Fax  
www.kaskaskiaeng.com

LICENSE NO.  
184-004773  
20-5080566

PROFESSIONAL REGISTRATIONS  
Illinois Professional Design Firm  
Professional Engineering Group

ROADWAY PLANS

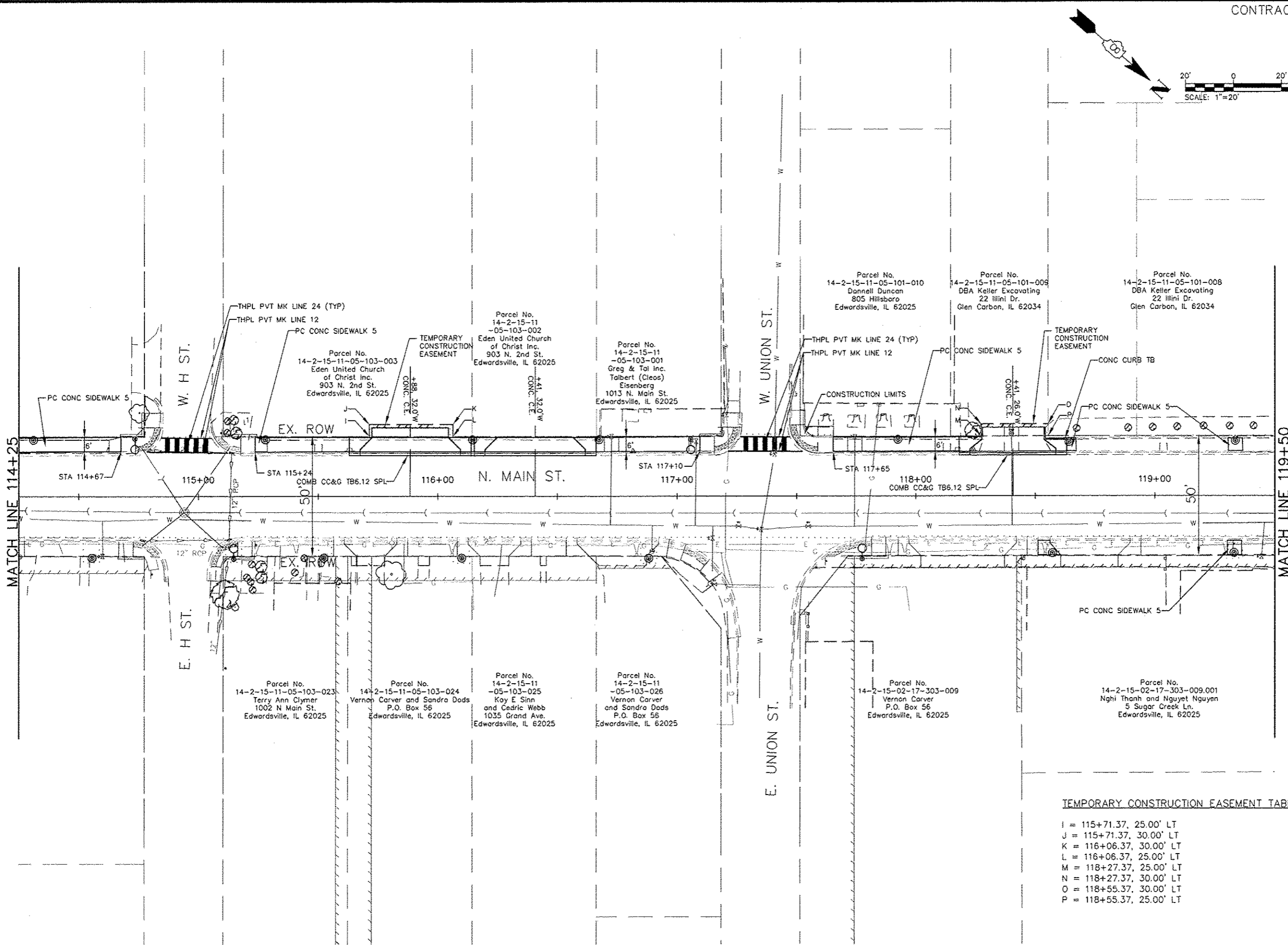
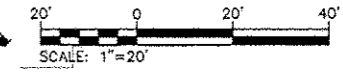
PROJECT TITLE:  
SEC 10-00085-01-LS  
NORTH MAIN STREET STREETSCAPE  
CITY OF EDWARDSVILLE, ILLINOIS

SHEET TITLE:

|                    |          |                   |
|--------------------|----------|-------------------|
| DESIGNED BY:       | SMS      | SHEET<br><b>7</b> |
| DRAWN BY:          | SMS      |                   |
| CHECKED BY:        | LDC      |                   |
| DATE OF PRE-FINAL: | 8/17/12  |                   |
| DATE OF FINAL:     | 10/12/12 |                   |

SHEET NO. 7 OF 18 SHEETS  
PROJECT NUMBER 09-1074.01





208 East Main Street, Suite 100  
 Belleville, Illinois 62220  
 618.233.5877 phone  
 618.233.5977 fax  
 www.kaskadiaeng.com



PREPARED BY:  
**Kaskadia**  
 Engineering Group, LLC  
 PROFESSIONAL REGISTRATIONS  
 Illinois Professional Design Firm  
 Professional Engineering Group

SHEET TITLE:  
**ROADWAY PLANS**

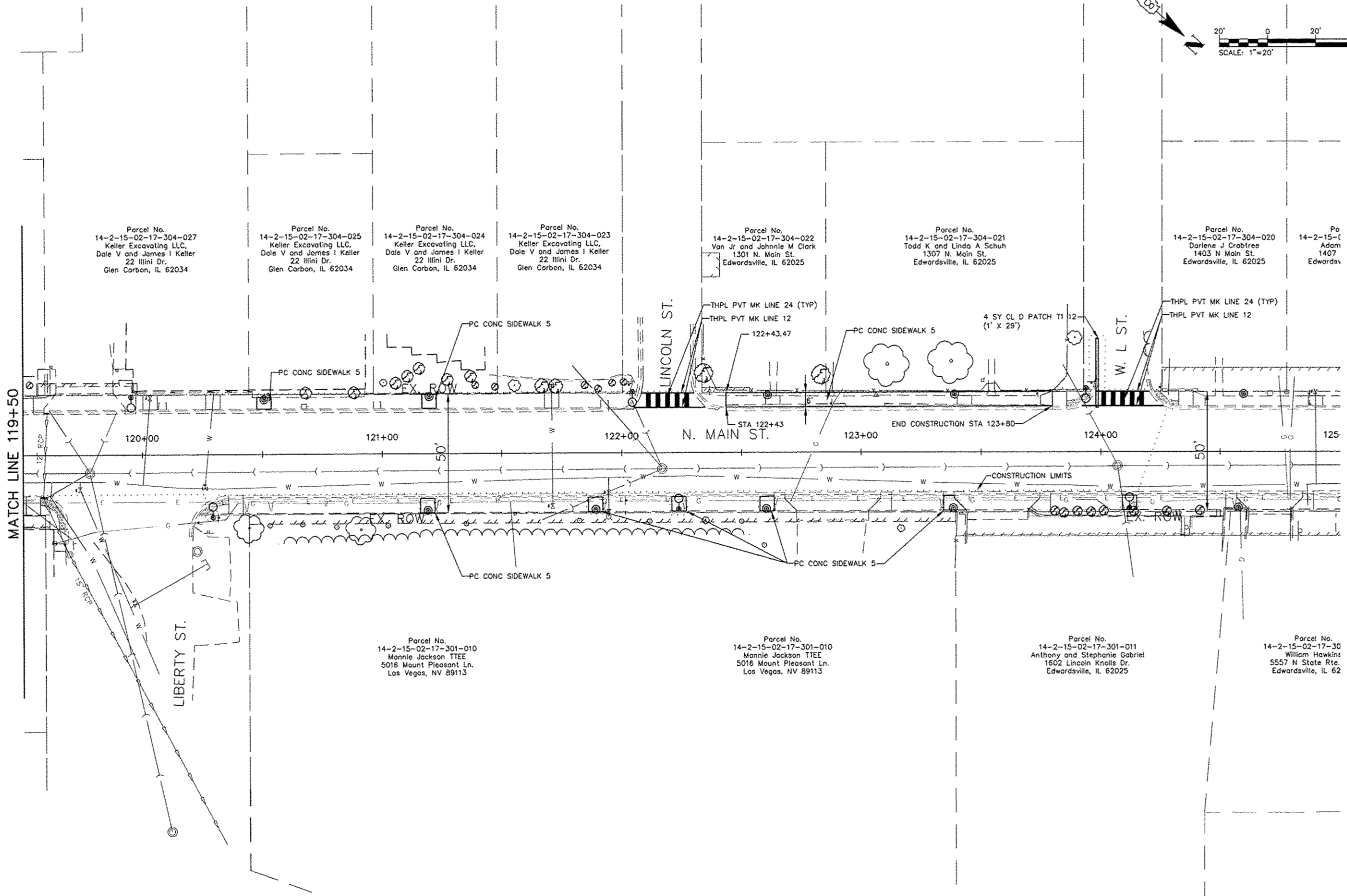
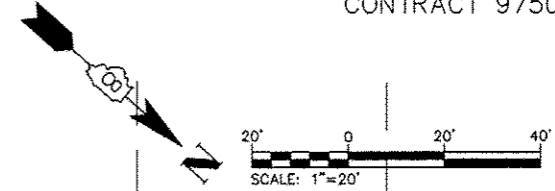
PROJECT TITLE:  
**SEC 10-00085-01-LS  
 NORTH MAIN STREET STREETSCAPE  
 CITY OF EDWARDSVILLE, ILLINOIS**

TEMPORARY CONSTRUCTION EASEMENT TABLE

|   |   |                      |
|---|---|----------------------|
| I | = | 115+71.37, 25.00' LT |
| J | = | 115+71.37, 30.00' LT |
| K | = | 116+06.37, 30.00' LT |
| L | = | 116+06.37, 25.00' LT |
| M | = | 118+27.37, 25.00' LT |
| N | = | 118+27.37, 30.00' LT |
| O | = | 118+55.37, 30.00' LT |
| P | = | 118+55.37, 25.00' LT |

|                           |          |          |
|---------------------------|----------|----------|
| DESIGNED BY:              | SMS      | SHEET    |
| DRAWN BY:                 | SMS      | <b>8</b> |
| CHECKED BY:               | LDC      |          |
| DATE OF PRE-FINAL:        | 8/17/12  |          |
| DATE OF FINAL:            | 10/12/12 |          |
| SHEET NO. 8 OF 18 SHEETS  |          |          |
| PROJECT NUMBER 09-1074.01 |          |          |





Parcel No.  
14-2-15-02-17-304-027  
Keller Excavating LLC,  
Dale V and James I Keller  
22 Illini Dr.  
Glen Carbon, IL 62034

Parcel No.  
14-2-15-02-17-304-025  
Keller Excavating LLC,  
Dale V and James I Keller  
22 Illini Dr.  
Glen Carbon, IL 62034

Parcel No.  
14-2-15-02-17-304-024  
Keller Excavating LLC,  
Dale V and James I Keller  
22 Illini Dr.  
Glen Carbon, IL 62034

Parcel No.  
14-2-15-02-17-304-023  
Keller Excavating LLC,  
Dale V and James I Keller  
22 Illini Dr.  
Glen Carbon, IL 62034

Parcel No.  
14-2-15-02-17-304-022  
Van Jr and Johnnie M Clark  
1301 N. Main St.  
Edwardsville, IL 62025

Parcel No.  
14-2-15-02-17-304-021  
Todd K and Linda A Schuh  
1307 N. Main St.  
Edwardsville, IL 62025

Parcel No.  
14-2-15-02-17-304-020  
Darlene J Crabtree  
1403 N Main St.  
Edwardsville, IL 62025

Parcel No.  
14-2-15-02-17-304-019  
Adam  
1407  
Edwardsville, IL 62025

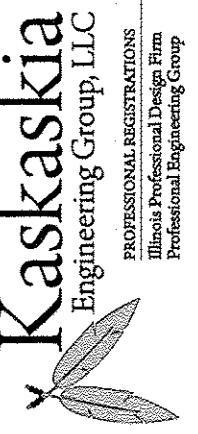
Parcel No.  
14-2-15-02-17-301-010  
Monnie Jackson TTEE  
5016 Mount Pleasant Ln.  
Las Vegas, NV 89113

Parcel No.  
14-2-15-02-17-301-010  
Monnie Jackson TTEE  
5016 Mount Pleasant Ln.  
Las Vegas, NV 89113

Parcel No.  
14-2-15-02-17-301-011  
Anthony and Stephanie Gabriel  
1602 Lincoln Knolls Dr.  
Edwardsville, IL 62025

Parcel No.  
14-2-15-02-17-301-012  
William Hawkins  
5557 N State Rte.  
Edwardsville, IL 62025

PREPARED BY:



208 East Main Street, Suite 100  
Bellefonte, Illinois 62220  
618.233.5877 phone  
618.233.5977 fax  
www.kaskaskiaeng.com

LICENSE NO.  
194-004773  
20-5080586

PROFESSIONAL REGISTRATIONS  
Illinois Professional Design Firm  
Professional Engineering Group

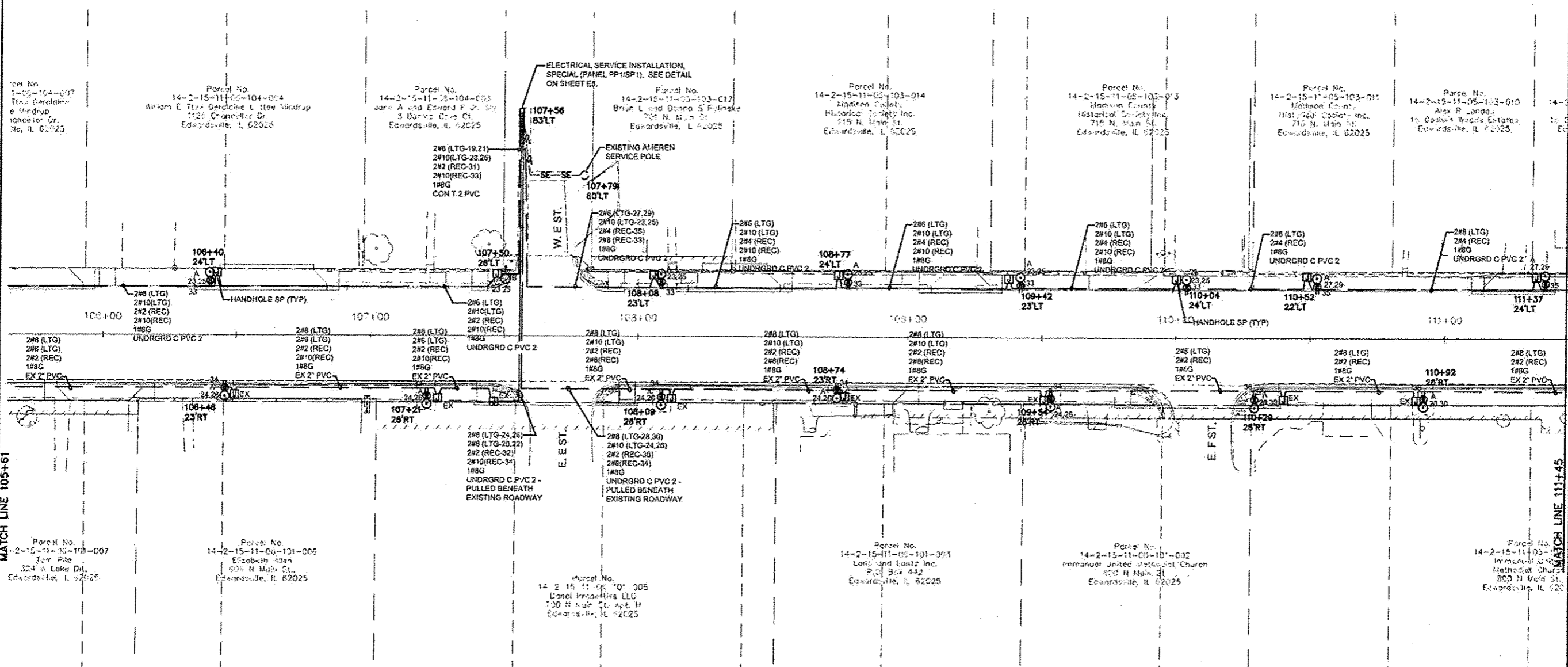
ROADWAY PLANS

PROJECT TITLE:  
SEC 10-00085-01-LS  
NORTH MAIN STREET STREETSCAPE  
CITY OF EDWARDSVILLE, ILLINOIS

SHEET TITLE:

|                           |          |       |
|---------------------------|----------|-------|
| DESIGNED BY:              | SMS      | SHEET |
| DRAWN BY:                 | SMS      | 9     |
| CHECKED BY:               | LDC      |       |
| DATE OF PRE-FINAL:        | 8/17/12  |       |
| DATE OF FINAL:            | 10/12/12 |       |
| SHEET NO. 9 OF 18 SHEETS  |          |       |
| PROJECT NUMBER 09-1074.01 |          |       |



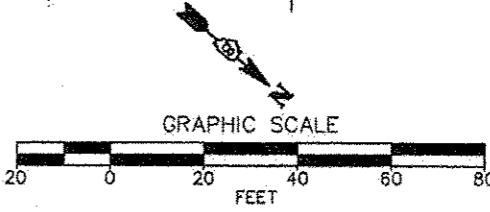


Parcel No. 14-2-15-11-05-104-004  
 Parcel No. 14-2-15-11-05-104-003  
 Parcel No. 14-2-15-11-05-103-017  
 Parcel No. 14-2-15-11-05-103-014  
 Parcel No. 14-2-15-11-05-103-013  
 Parcel No. 14-2-15-11-05-103-011  
 Parcel No. 14-2-15-11-05-103-010

Parcel No. 14-2-15-11-05-101-007  
 Parcel No. 14-2-15-11-05-101-006  
 Parcel No. 14-2-15-11-05-101-005  
 Parcel No. 14-2-15-11-05-101-004  
 Parcel No. 14-2-15-11-05-101-003  
 Parcel No. 14-2-15-11-05-101-002

PLAN NOTES

1. LIGHT POLE FOUNDATIONS SHALL BE INSTALLED PLUMB AND FLUSH WITH THE PROPOSED GRADE AND SHALL MEET THE HEIGHT REQUIREMENTS OF ARTICLE 836.03 OF THE STANDARD SPECIFICATIONS. WASHERS USED TO INSTALL THE POLE SHALL BE LARGE ENOUGH TO FULLY COVER THE SLOTTED HOLES IN THE POLE BASE PLATE.
2. CONTRACTOR SHALL INSTALL LIGHT POLES AT THE LOCATIONS INDICATED ON THE PLANS, MAINTAINING ADEQUATE CLEARANCE FROM UTILITY LINES. CONTRACTOR SHALL BE RESPONSIBLE TO VERIFY CLEARANCES PER THE NATIONAL ELECTRICAL SAFETY CODE AND/OR THE REQUIREMENTS OF THE UTILITY COMPANIES. THE CONTRACTOR SHALL NOTIFY THE ENGINEER OF ALL CONFLICTS BETWEEN PROPOSED LIGHTING POLE LOCATIONS AND UTILITY LINES. THE LOCATION OF BURIED AND ABOVE GROUND UTILITIES SHOWN ARE APPROXIMATE AND ARE SHOWN FOR INFORMATION ONLY. REROUTING, DISCONNECTION, RELOCATION, PROTECTION ETC. OF ANY UTILITIES MUST BE COORDINATED BETWEEN THE CONTRACTOR, UTILITY COMPANY AND OWNER. THE CONTRACTOR SHALL VERIFY THE EXACT LOCATION OF ALL UNDERGROUND UTILITIES PRIOR TO CONSTRUCTION.
3. THE CONTRACTOR IS RESPONSIBLE FOR UNCOVERING OR HAND DIGGING AROUND UTILITIES AS NECESSARY. THE COST OF THIS WORK IS TO BE INCLUDED WITH THE APPLICABLE UNDERGROUND PAY ITEM.
4. NO LIGHTING CIRCUIT OR PORTION THEREOF SHALL BE REMOVED FROM NIGHTTIME OPERATION WITHOUT THE APPROVAL OF THE ENGINEER.
5. ALL NEW CONDUIT INDICATED TO BE INSTALLED BENEATH ROADWAYS AND DRIVEWAY ACCESS SHALL BE SCHEDULE 60 PVC. THE COST SHALL BE INCLUDED IN THE UNDERGROUND RACEWAY PAY ITEM.



NOTE:  
 CONTRACTOR SHALL FIELD VERIFY/POT HOLE ALL UNDERGROUND UTILITIES PRIOR TO EXCAVATION FOR POLE FOUNDATIONS.

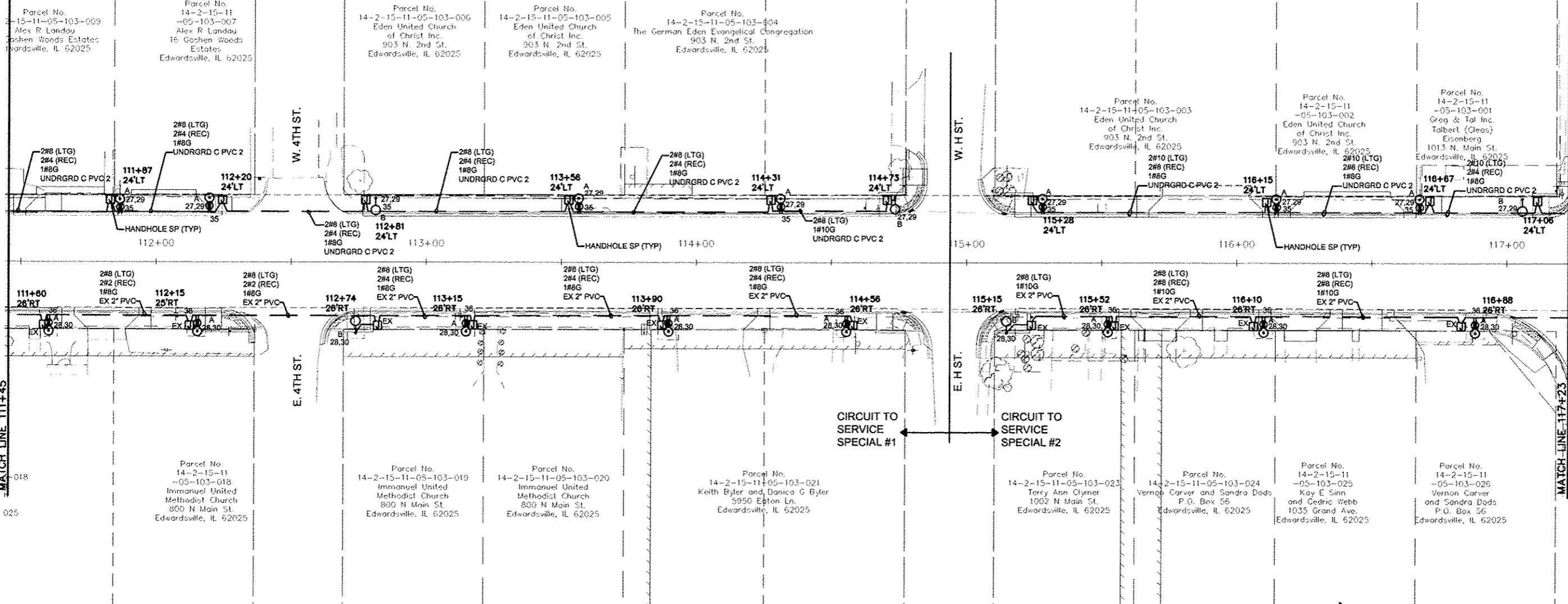
208 East Main Street, Suite 100  
 Belleville, Illinois 62220  
 618.233.5877  
 618.233.5977 Fax  
 www.kaskaskiaeng.com  
 LICENSE NO. 184.004773  
 20-5080586

**Kaskaskia**  
 Engineering Group, LLC  
 PROFESSIONAL REGISTRATIONS  
 Illinois Professional Design Firm  
 Professional Engineering Group

**BRIC**  
 PARTNERSHIP, LLC  
 CONSULTING ENGINEERS  
 100 EAST WASHINGTON, SUITE 220  
 BELLEVILLE, IL 62220  
 TEL 618.277.5200  
 FAX 618.277.5227

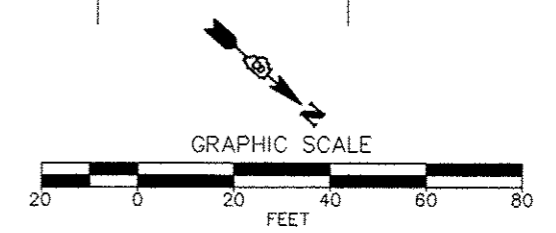
SECRET TITLE: STREETSCAPE LIGHTING PLAN  
 PROJECT TITLE: SEC 10-0085-01-LS  
 NORTH MAIN STREET STREETSCAPE  
 CITY OF EDWARDSVILLE, ILLINOIS

|                            |           |
|----------------------------|-----------|
| DESIGNED BY: JJA           | SECRET    |
| DRAWN BY: JEN              | <b>E2</b> |
| CHECKED BY: RJD            |           |
| DATE OF REV. FINAL: 8/12   |           |
| DATE OF FINAL: 10/12/12    |           |
| SECRET NO. 11 OF 18 SHEETS |           |
| PROJECT NUMBER: 02-1074.01 |           |



**PLAN NOTES**

1. LIGHT POLE FOUNDATIONS SHALL BE INSTALLED PLUMB AND FLUSH WITH THE PROPOSED GRADE AND SHALL MEET THE HEIGHT REQUIREMENTS OF ARTICLE 636.03 OF THE STANDARD SPECIFICATIONS. WASHERS USED TO INSTALL THE POLE SHALL BE LARGE ENOUGH TO FULLY COVER THE SLOTTED HOLES IN THE POLE BASE PLATE.
2. CONTRACTOR SHALL INSTALL LIGHT POLES AT THE LOCATIONS INDICATED ON THE PLANS, MAINTAINING ADEQUATE CLEARANCE FROM UTILITY LINES. CONTRACTOR SHALL BE RESPONSIBLE TO VERIFY CLEARANCES PER THE NATIONAL ELECTRICAL SAFETY CODE AND/OR THE REQUIREMENTS OF THE UTILITY COMPANIES. THE CONTRACTOR SHALL NOTIFY THE ENGINEER OF ALL CONFLICTS BETWEEN PROPOSED LIGHTING POLE LOCATIONS AND UTILITY LINES. THE LOCATION OF BURIED AND ABOVE GROUND UTILITIES SHOWN ARE APPROXIMATE AND ARE SHOWN FOR INFORMATION ONLY. REROUTING, DISCONNECTION, RELOCATION, PROTECTION ETC. OF ANY UTILITIES MUST BE COORDINATED BETWEEN THE CONTRACTOR, UTILITY COMPANY AND OWNER. THE CONTRACTOR SHALL VERIFY THE EXACT LOCATION OF ALL UNDERGROUND UTILITIES PRIOR TO CONSTRUCTION.
3. THE CONTRACTOR IS RESPONSIBLE FOR UNCOVERING OR HAND DIGGING AROUND UTILITIES AS NECESSARY. THE COST OF THIS WORK IS TO BE INCLUDED WITH THE APPLICABLE UNDERGROUND PAY ITEM.
4. NO LIGHTING CIRCUIT OR PORTION THEREOF SHALL BE REMOVED FROM NIGHTTIME OPERATION WITHOUT THE APPROVAL OF THE ENGINEER.
5. ALL NEW CONDUIT INDICATED TO BE INSTALLED BENEATH ROADWAYS AND DRIVEWAY ACCESS SHALL BE SCHEDULE 80 PVC. THE COST SHALL BE INCLUDED IN THE UNDERGROUND RACEWAY PAY ITEM.



NOTE:  
CONTRACTOR SHALL FIELD VERIFY/POT HOLE ALL UNDERGROUND UTILITIES PRIOR TO EXCAVATION FOR POLE FOUNDATIONS.

208 East Main Street, Suite 100  
Belleville, Illinois 62220  
618.233.5877 phone  
618.233.5977 fax  
www.kaskaskiaeng.com

**Kaskaskia**  
Engineering Group, LLC

PROFESSIONAL REGISTRATIONS  
Illinois Professional Design Firm  
Professional Engineering Group

LICENSE NO. 184-004773  
20-5080586

PREPARED BY:

**BRIC**  
PARTNERSHIP, LLC  
CONSULTING ENGINEERS  
100 EAST WASHINGTON, SUITE 220  
BELLEVILLE, IL 62220  
TEL 618.277.5200  
FAX 618.277.5227

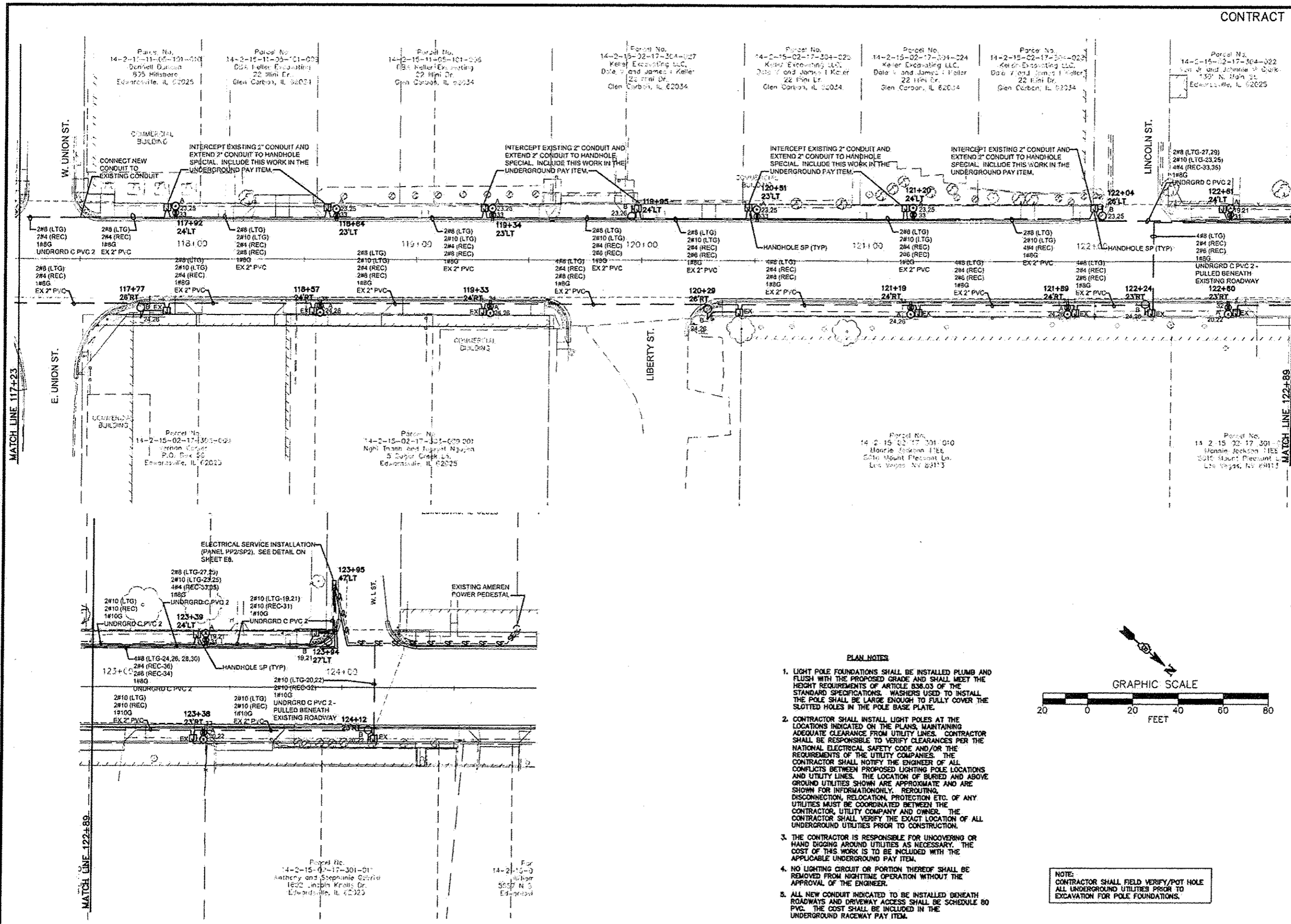
**STREETSCAPE LIGHTING PLAN**

SEC 10-00085-01-LS  
NORTH MAIN STREET STREETSCAPE  
CITY OF EDWARDSVILLE, ILLINOIS

SHEET TITLE:

|                           |          |       |
|---------------------------|----------|-------|
| DESIGNED BY:              | JEN      | SHEET |
| DRAWN BY:                 | JEN      | E3    |
| CHECKED BY:               | RJD      |       |
| DATE OF PRE-FINAL:        | 8/17/12  |       |
| DATE OF FINAL:            | 10/12/12 |       |
| SHEET NO. 12 OF 18 SHEETS |          |       |
| PROJECT NUMBER 02-1074.01 |          |       |

FILE: M:\2009-08\Conf\Elec\ITP E Sheet Revisions 12-20-12.dwg

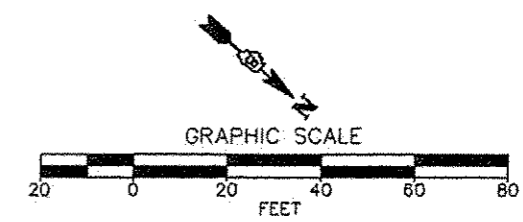


FILE: \\2004-01\Drawings\1-9-13\13.dwg  
LAST PLOTTED: 1/28/2013 7:44 AM

OPERATOR  
J77N

PLAN NOTES

1. LIGHT POLE FOUNDATIONS SHALL BE INSTALLED PLUMB AND FLUSH WITH THE PROPOSED GRADE AND SHALL MEET THE HEIGHT REQUIREMENTS OF ARTICLE 836.03 OF THE STANDARD SPECIFICATIONS. WASHERS USED TO INSTALL THE POLE SHALL BE LARGE ENOUGH TO FULLY COVER THE SLOTTED HOLES IN THE POLE BASE PLATE.
2. CONTRACTOR SHALL INSTALL LIGHT POLES AT THE LOCATIONS INDICATED ON THE PLANS, MAINTAINING ADEQUATE CLEARANCE FROM UTILITY LINES. CONTRACTOR SHALL BE RESPONSIBLE TO VERIFY CLEARANCES PER THE NATIONAL ELECTRICAL SAFETY CODE AND/OR THE REQUIREMENTS OF THE UTILITY COMPANIES. THE CONTRACTOR SHALL NOTIFY THE ENGINEER OF ALL CONFLICTS BETWEEN PROPOSED LIGHTING POLE LOCATIONS AND UTILITY LINES. THE LOCATION OF BURIED AND ABOVE GROUND UTILITIES SHOWN ARE APPROXIMATE AND ARE SHOWN FOR INFORMATION ONLY. REROUTING, DISCONNECTION, RELOCATION, PROTECTION ETC. OF ANY UTILITIES MUST BE COORDINATED BETWEEN THE CONTRACTOR, UTILITY COMPANY AND OWNER. THE CONTRACTOR SHALL VERIFY THE EXACT LOCATION OF ALL UNDERGROUND UTILITIES PRIOR TO CONSTRUCTION.
3. THE CONTRACTOR IS RESPONSIBLE FOR UNCOVERING OR HAND DIGGING AROUND UTILITIES AS NECESSARY. THE COST OF THIS WORK IS TO BE INCLUDED WITH THE APPLICABLE UNDERGROUND PAY ITEM.
4. NO LIGHTING CIRCUIT OR PORTION THEREOF SHALL BE REMOVED FROM NIGHTTIME OPERATION WITHOUT THE APPROVAL OF THE ENGINEER.
5. ALL NEW CONDUIT INDICATED TO BE INSTALLED BENEATH ROADWAYS AND DRIVEWAY ACCESS SHALL BE SCHEDULE 80 PVC. THE COST SHALL BE INCLUDED IN THE UNDERGROUND RACEWAY PAY ITEM.



NOTE:  
CONTRACTOR SHALL FIELD VERIFY/POT HOLE ALL UNDERGROUND UTILITIES PRIOR TO EXCAVATION FOR POLE FOUNDATIONS.

208 East Main Street, Suite 100  
Bellefonte, Illinois 62220  
618.233.5977 phone  
618.233.5977 fax  
www.kaskaskiaeng.com

**Kaskaskia**  
Engineering Group, LLC

PROFESSIONAL REGISTRATIONS  
Illinois Professional Design Firm  
Professional Engineering Group

LICENSE NO. 184.004773  
20-5089586

PREPARED BY:

**BRIC**  
PARTNERSHIP, LLC  
CONSULTING ENGINEERS

100 EAST WASHINGTON, SUITE 220  
BELLEVILLE, IL 62220  
TEL: 618.277.5200  
FAX: 618.277.5227

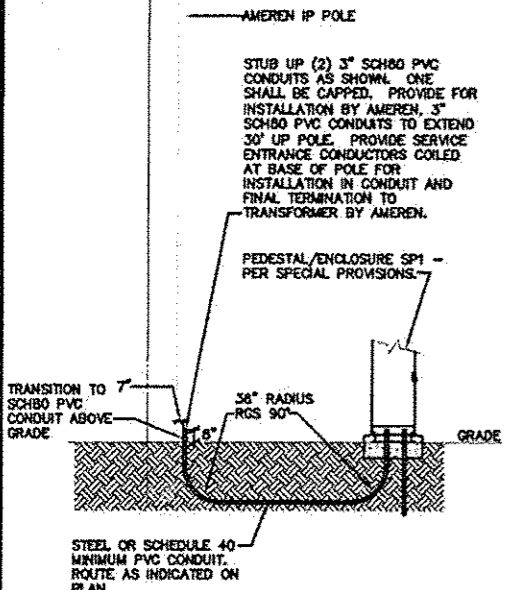
SECRET TITLE: **STREETSCAPE LIGHTING PLAN**

PROJECT TITLE: **SEC 10-00085-01-LS  
NORTH MAIN STREET STREETSCAPE  
CITY OF EDWARDSVILLE, ILLINOIS**

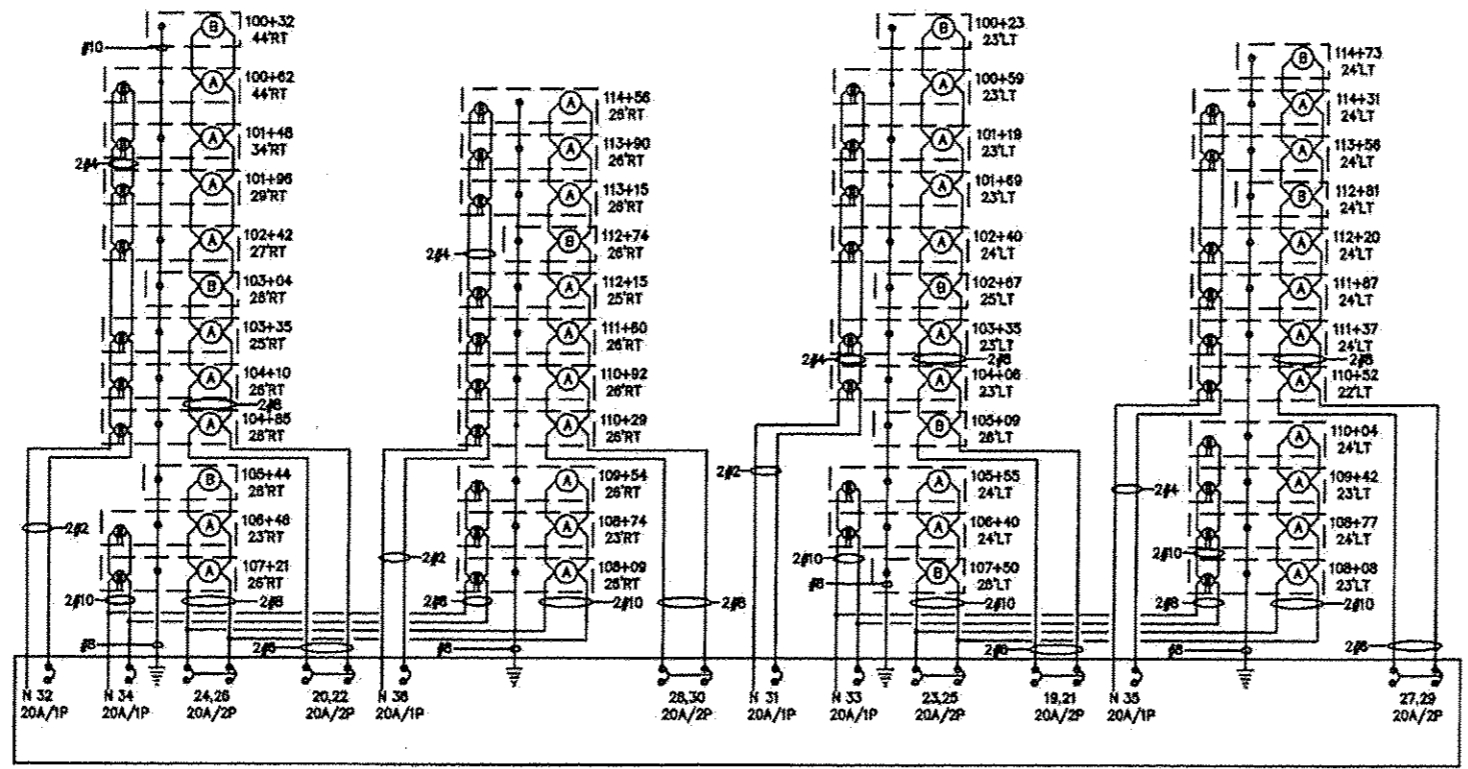
|                            |           |
|----------------------------|-----------|
| DESIGNED BY: JUN           | SECRET    |
| DRAWN BY: JEN              |           |
| CHECKED BY: RJD            |           |
| DATE OF PRELIM: 8-1-12     | <b>E4</b> |
| DATE OF FINAL: 10-12-12    |           |
| SECRET NO. 11 OF 18 SHEETS |           |
| PROJECT NUMBER: 09-107101  |           |







**ELECTRIC SERVICE INSTALLATION, SPECIAL**  
NO SCALE

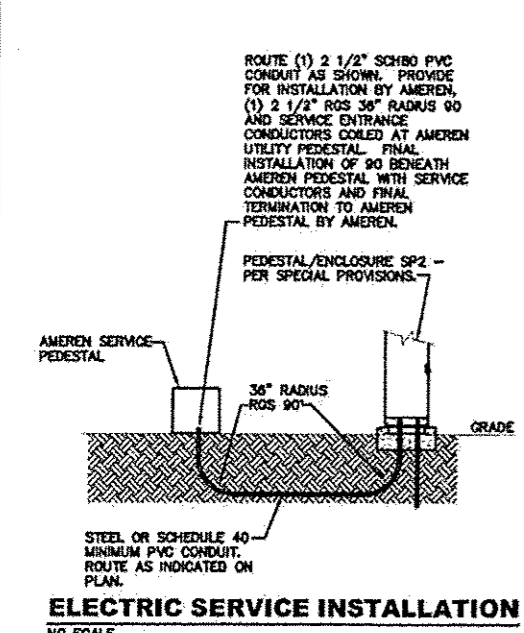


| PANEL NO: PP1 |          |                      |      |                     |        |                                     | 10,000 AIC              |      |
|---------------|----------|----------------------|------|---------------------|--------|-------------------------------------|-------------------------|------|
| VA            | FUNCTION | SIZE                 | CKT  | PH                  | CKT    | SIZE                                | FUNCTION                | VA   |
| -             | -        |                      | 1    | A                   | 2      | 125A/2P                             | PANEL SP1               | 9579 |
| -             | -        |                      | 3    | B                   | 4      |                                     |                         | 6879 |
|               | SPACE    |                      | 5    | A                   | 8      | 20A/1P                              | CONTROL CIRCUIT         | 50   |
|               | SPACE    |                      | 7    | B                   | 8      | 20A/1P                              | PEDESTAL RECPT/LT       | 280  |
|               | SPACE    |                      | 9    | A                   | 10     |                                     | SPACE                   |      |
|               | SPACE    |                      | 11   | B                   | 12     |                                     | SPACE                   |      |
|               | SPACE    |                      | 13   | A                   | 14     |                                     | SPACE                   |      |
|               | SPACE    |                      | 15   | B                   | 18     |                                     | SPACE                   |      |
|               | SPACE    |                      | 17   | A                   | 18     |                                     | SPACE                   |      |
| PHASE         |          | A                    | B    |                     | TOTALS |                                     | VOLTS: 120/240V, 1φ, 3W |      |
| VOLTAGES      |          | 9579                 | 7159 |                     | 16738  |                                     |                         |      |
| MAINS:        |          | 150 AMP MAIN BREAKER |      | POLES: 18 POSITIONS |        | MOUNTING: INSIDE PEDESTAL/ENCLOSURE |                         |      |

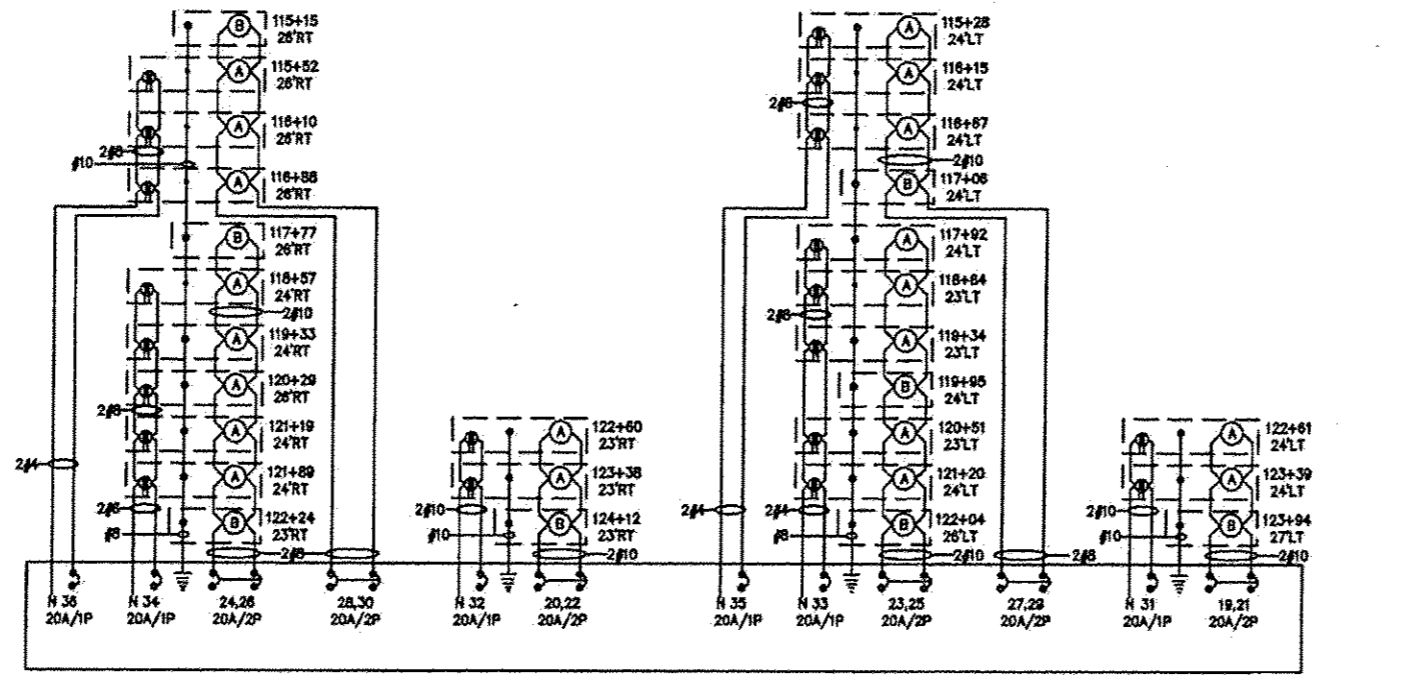
| PANEL NO: SP1 (SWITCHED PORTION OF PANEL) |  |                      |      |                     |        |                                     | 10,000 AIC                             |      |
|---|--|----------------------|------|---------------------|--------|-------------------------------------|--|------|
| VA  | FUNCTION                               | SIZE                 | CKT  | PH                  | CKT    | SIZE                                | FUNCTION                               | VA   |
| 998                                       | STREET LIGHTS - WEST SIDE HIGH TO DUNN | 20A/2P               | 18   | A                   | 20     | 20A/2P                              | STREET LIGHTS - EAST SIDE HIGH TO DUNN | 943  |
| 998                                       | STREET LIGHTS - WEST SIDE DUNN TO F    | 20A/2P               | 21   | B                   | 22     | 20A/2P                              | STREET LIGHTS - EAST SIDE DUNN TO F    | 943  |
| 703                                       | STREET LIGHTS - WEST SIDE F TO H       | 20A/2P               | 25   | B                   | 28     | 20A/2P                              | STREET LIGHTS - EAST SIDE F TO H       | 810  |
| 850                                       | RECEPTACLES - W                        | 20A/1P               | 29   | A                   | 30     | 20A/1P                              | RECEPTACLES - E                        | 1280 |
| 1080                                      | RECEPTACLES - W                        | 20A/1P               | 33   | B                   | 34     | 20A/1P                              | RECEPTACLES - E                        | 900  |
| 1080                                      | RECEPTACLES - W                        | 20A/1P               | 35   | A                   | 38     | 20A/1P                              | RECEPTACLES - E                        | 1280 |
| 0   | SPARE                                  | 20A/1P               | 37   | B                   | 38     | 20A/1P                              | SPARE                                  | 0    |
| 0   | SPARE                                  | 20A/2P               | 39   | A                   | 40     | 20A/2P                              | SPARE                                  | 0    |
|   | SPACE                                  |                      | 43   | A                   | 44     |                                     | SPACE                                  |      |
|   | SPACE                                  |                      | 45   | B                   | 46     |                                     | SPACE                                  |      |
|   | SPACE                                  |                      | 47   | A                   | 48     |                                     | SPACE                                  |      |
| PHASE                                     |  | A                    | B    |                     | TOTALS |                                     | VOLTS: 120/240V, 1φ, 3W                |      |
| VOLTAGES                                  |  | 9579                 | 6879 |                     | 16458  |                                     |  |      |
| MAINS:                                    |  | 150 AMP MAIN BREAKER |      | POLES: 30 POSITIONS |        | MOUNTING: INSIDE PEDESTAL/ENCLOSURE |  |      |

| PANEL NO: PP2 |          |                      |      |                     |        |                                     | 10,000 AIC              |      |
|---------------|----------|----------------------|------|---------------------|--------|-------------------------------------|-------------------------|------|
| VA            | FUNCTION | SIZE                 | CKT  | PH                  | CKT    | SIZE                                | FUNCTION                | VA   |
| -             | -        |                      | 1    | A                   | 2      | 100A/2P                             | PANEL SP2               | 4896 |
| -             | -        |                      | 3    | B                   | 4      |                                     |                         | 4716 |
|               | SPACE    |                      | 5    | A                   | 8      | 20A/1P                              | CONTROL CIRCUIT         | 50   |
|               | SPACE    |                      | 7    | B                   | 8      | 20A/1P                              | PEDESTAL RECPT/LT       | 280  |
|               | SPACE    |                      | 9    | A                   | 10     |                                     | SPACE                   |      |
|               | SPACE    |                      | 11   | B                   | 12     |                                     | SPACE                   |      |
|               | SPACE    |                      | 13   | A                   | 14     |                                     | SPACE                   |      |
|               | SPACE    |                      | 15   | B                   | 16     |                                     | SPACE                   |      |
|               | SPACE    |                      | 17   | A                   | 18     |                                     | SPACE                   |      |
| PHASE         |          | A                    | B    |                     | TOTALS |                                     | VOLTS: 120/240V, 1φ, 3W |      |
| VOLTAGES      |          | 4896                 | 4716 |                     | 9612   |                                     |                         |      |
| MAINS:        |          | 150 AMP MAIN BREAKER |      | POLES: 18 POSITIONS |        | MOUNTING: INSIDE PEDESTAL/ENCLOSURE |                         |      |

| PANEL NO: SP2 (SWITCHED PORTION OF PANEL) |  |                      |      |                     |        |                                     | 10,000 AIC                                 |     |
|---|--|----------------------|------|---------------------|--------|-------------------------------------|--|-----|
| VA  | FUNCTION                                   | SIZE                 | CKT  | PH                  | CKT    | SIZE                                | FUNCTION                                   | VA  |
| 338                                       | STREET LIGHTS - WEST SIDE LINCOLN TO L     | 20A/2P               | 19   | A                   | 20     | 20A/2P                              | STREET LIGHTS - EAST SIDE LINCOLN TO L     | 338 |
| 757                                       | STREET LIGHTS - WEST SIDE UNION TO LINCOLN | 20A/2P               | 23   | A                   | 24     | 20A/2P                              | STREET LIGHTS - EAST SIDE UNION TO LINCOLN | 813 |
| 757                                       | STREET LIGHTS - WEST SIDE H TO UNION       | 20A/2P               | 25   | B                   | 26     | 20A/2P                              | STREET LIGHTS - EAST SIDE H TO UNION       | 813 |
| 425                                       | RECEPTACLES - W                            | 20A/1P               | 29   | A                   | 30     | 20A/1P                              | RECEPTACLES - E                            | 425 |
| 425                                       | RECEPTACLES - W                            | 20A/1P               | 29   | B                   | 30     | 20A/1P                              | RECEPTACLES - E                            | 425 |
| 360                                       | RECEPTACLES - W                            | 20A/1P               | 31   | A                   | 32     | 20A/1P                              | RECEPTACLES - E                            | 360 |
| 900                                       | RECEPTACLES - W                            | 20A/1P               | 33   | B                   | 34     | 20A/1P                              | RECEPTACLES - E                            | 720 |
| 540                                       | RECEPTACLES - W                            | 20A/1P               | 35   | A                   | 38     | 20A/1P                              | RECEPTACLES - E                            | 540 |
| 0   | SPARE                                      | 20A/1P               | 37   | B                   | 38     | 20A/1P                              | SPARE                                      | 0   |
| 0   | SPARE                                      | 20A/2P               | 39   | A                   | 40     | 20A/2P                              | SPARE                                      | 0   |
|   | SPACE                                      |                      | 43   | A                   | 44     |                                     | SPACE                                      |     |
|   | SPACE                                      |                      | 45   | B                   | 46     |                                     | SPACE                                      |     |
|   | SPACE                                      |                      | 47   | A                   | 48     |                                     | SPACE                                      |     |
| PHASE                                     |  | A                    | B    |                     | TOTALS |                                     | VOLTS: 120/240V, 1φ, 3W                    |     |
| VOLTAGES                                  |  | 4896                 | 4716 |                     | 9612   |                                     |  |     |
| MAINS:                                    |  | 150 AMP MAIN BREAKER |      | POLES: 30 POSITIONS |        | MOUNTING: INSIDE PEDESTAL/ENCLOSURE |  |     |



**ELECTRIC SERVICE INSTALLATION**  
NO SCALE



FILE: N:\2008-08\Con\Spec\Spec E Sheet\Revisions 1-9-13.dwg

LAST PLOTTED: 1/28/2013 8:01 AM

OPERATOR: JETH

1/28/13

208 East Main Street, Suite 100  
Belleville, Illinois 62220  
618.233.5877 phone  
618.233.5977 fax  
www.kaskiaeng.com

**Kaskia**  
Engineering Group, LLC

PROFESSIONAL REGISTRATIONS  
Illinois Professional Design Firm  
Professional Engineering Group

LICENSE NO. 194.004773  
20-5080586

**BRIC**  
PARTNERSHIP, LLC  
CONSULTING ENGINEERS

100 EAST WASHINGTON, SUITE 220  
BELLEVILLE, IL 62220  
TEL: 618.277.6200  
FAX: 618.277.5227

**ELECTRICAL SCHEDULES AND DETAILS**

PROJECT TITLE: SEC 10-00085-01-LS  
NORTH MAIN STREET STREETSCAPE  
CITY OF EDWARDSVILLE, ILLINOIS

DESIGNED BY: JEN  
DRAWN BY: JEN  
CHECKED BY: RJD  
DATE OF PRE-FINAL: 6/1/12  
DATE OF FINAL: 10/12/12  
SHEET NO. 13 OF 12 SHEETS  
PROJECT NUMBER: 09-1024.01

**E6**



| LUMINAIRE SCHEDULE             |        |                                   |                                |                         |                                |                                      |
|--------------------------------|--------|-----------------------------------|--------------------------------|-------------------------|--------------------------------|--------------------------------------|
| STATION (TO CENTER OF STRUCT.) | OFFSET | LIGHT POLE FDN 30" DIA SPL (FOOT) | DECORATIVE LIGHT TYPE A (EACH) | HANDHOLE SPECIAL (EACH) | DECORATIVE LIGHT TYPE B (EACH) | REMOVE EXISTING LIGHT FIXTURE (EACH) |
| 99+81                          | 37' RT | 7                                 |                                |                         | 1                              | 1                                    |
| 100+32                         | 44' RT | 7                                 |                                | EX                      | 1                              |                                      |
| 100+81                         | 43' RT |                                   | 1                              | EX                      |                                |                                      |
| 101+48                         | 35' RT |                                   | 1                              | EX                      |                                |                                      |
| 101+96                         | 29' RT |                                   | 1                              | EX                      |                                |                                      |
| 102+42                         | 27' RT |                                   | 1                              | EX                      |                                |                                      |
| 103+04                         | 26' RT | 7                                 |                                | EX                      | 1                              |                                      |
| 103+35                         | 25' RT |                                   | 1                              | EX                      |                                |                                      |
| 104+10                         | 26' RT |                                   | 1                              | EX                      |                                |                                      |
| 104+85                         | 26' RT |                                   | 1                              | EX                      |                                |                                      |
| 100+23                         | 23' LT | 7                                 |                                |                         | 1                              |                                      |
| 100+59                         | 23' LT |                                   | 1                              |                         |                                |                                      |
| 101+19                         | 23' LT |                                   | 1                              |                         |                                |                                      |
| 101+69                         | 23' LT |                                   | 1                              |                         |                                |                                      |
| 102+40                         | 24' LT |                                   | 1                              |                         |                                |                                      |
| 102+67                         | 29' LT | 7                                 |                                |                         | 1                              |                                      |
| 103+35                         | 23' LT |                                   | 1                              |                         |                                |                                      |
| 104+08                         | 23' LT |                                   | 1                              |                         |                                |                                      |
| 105+09                         | 26' LT |                                   | 1                              |                         |                                |                                      |
| 105+44                         | 26' RT | 7                                 |                                | EX                      | 1                              |                                      |
| 106+46                         | 23' RT |                                   | 1                              | EX                      |                                |                                      |
| 107+21                         | 26' RT |                                   | 1                              | EX                      |                                |                                      |
| 108+09                         | 26' RT |                                   | 1                              | EX                      |                                |                                      |
| 108+74                         | 23' RT |                                   | 1                              | EX                      |                                |                                      |
| 109+54                         | 26' RT |                                   | 1                              | EX                      |                                |                                      |
| 105+55                         | 24' LT |                                   | 1                              |                         |                                |                                      |
| 106+40                         | 24' LT |                                   | 1                              |                         |                                |                                      |
| 107+60                         | 26' LT | 7                                 |                                |                         | 1                              |                                      |
| 108+08                         | 23' LT |                                   | 1                              |                         |                                |                                      |
| 108+77                         | 24' LT |                                   | 1                              |                         |                                |                                      |
| 109+42                         | 23' LT |                                   | 1                              |                         |                                |                                      |
| 110+04                         | 24' LT |                                   | 1                              |                         |                                |                                      |
| 110+29                         | 26' RT |                                   | 1                              | EX                      |                                |                                      |
| 110+92                         | 26' RT |                                   | 1                              | EX                      |                                |                                      |
| 111+80                         | 26' RT |                                   | 1                              | EX                      |                                |                                      |
| 112+15                         | 25' RT |                                   | 1                              | EX                      |                                |                                      |
| 112+74                         | 26' RT | 7                                 |                                | EX                      | 1                              |                                      |
| 113+16                         | 26' RT |                                   | 1                              | EX                      |                                |                                      |
| 113+90                         | 26' RT |                                   | 1                              | EX                      |                                |                                      |
| 114+58                         | 26' RT |                                   | 1                              | EX                      |                                |                                      |
| 110+52                         | 22' LT |                                   | 1                              |                         |                                |                                      |
| 111+37                         | 24' LT |                                   | 1                              |                         |                                |                                      |
| 111+87                         | 24' LT |                                   | 1                              |                         |                                |                                      |
| 112+20                         | 24' LT |                                   | 1                              |                         |                                |                                      |
| 112+81                         | 24' LT | 7                                 |                                |                         | 1                              |                                      |
| 113+58                         | 24' LT |                                   | 1                              |                         |                                |                                      |
| 113+90                         | 24' LT |                                   | 1                              |                         |                                |                                      |
| 114+31                         | 24' LT |                                   | 1                              |                         |                                |                                      |
| 114+73                         | 24' LT |                                   | 1                              |                         |                                |                                      |
| 114+73                         | 24' LT | 7                                 |                                |                         | 1                              |                                      |
| 115+15                         | 26' RT | 7                                 |                                | EX                      | 1                              |                                      |
| 115+52                         | 26' RT |                                   | 1                              | EX                      |                                |                                      |
| 115+10                         | 26' RT |                                   | 1                              | EX                      |                                |                                      |
| 118+88                         | 26' RT |                                   | 1                              | EX                      |                                |                                      |
| 115+28                         | 24' LT |                                   | 1                              |                         |                                |                                      |
| 118+16                         | 24' LT |                                   | 1                              |                         |                                |                                      |
| 118+67                         | 24' LT |                                   | 1                              |                         |                                |                                      |
| 117+06                         | 24' LT | 7                                 |                                |                         | 1                              |                                      |
| 117+77                         | 26' RT | 7                                 |                                | EX                      | 1                              |                                      |
| 118+57                         | 24' RT |                                   | 1                              | EX                      |                                |                                      |
| 119+33                         | 24' RT |                                   | 1                              | EX                      |                                |                                      |
| 120+29                         | 26' RT | 7                                 |                                | EX                      | 1                              |                                      |
| 121+19                         | 24' RT |                                   | 1                              | EX                      |                                |                                      |
| 121+89                         | 24' RT |                                   | 1                              | EX                      |                                |                                      |
| 122+24                         | 23' RT | 7                                 |                                | EX                      | 1                              |                                      |
| 117+92                         | 24' LT |                                   | 1                              |                         |                                |                                      |
| 118+64                         | 23' LT |                                   | 1                              |                         |                                |                                      |
| 119+34                         | 23' LT |                                   | 1                              |                         |                                |                                      |
| 119+95                         | 24' LT | 7                                 |                                |                         | 1                              |                                      |
| 120+51                         | 23' LT |                                   | 1                              |                         |                                |                                      |
| 121+20                         | 24' LT |                                   | 1                              |                         |                                |                                      |
| 122+04                         | 26' LT | 7                                 |                                |                         | 1                              |                                      |
| 122+80                         | 23' RT |                                   | 1                              | EX                      |                                |                                      |
| 123+38                         | 23' RT |                                   | 1                              | EX                      |                                |                                      |
| 124+12                         | 23' RT | 7                                 |                                | EX                      | 1                              |                                      |
| 122+61                         | 24' LT |                                   | 1                              |                         |                                |                                      |

| LUMINAIRE SCHEDULE             |        |                                   |                                |                         |                                |                                      |
|--------------------------------|--------|-----------------------------------|--------------------------------|-------------------------|--------------------------------|--------------------------------------|
| STATION (TO CENTER OF STRUCT.) | OFFSET | LIGHT POLE FDN 30" DIA SPL (FOOT) | DECORATIVE LIGHT TYPE A (EACH) | HANDHOLE SPECIAL (EACH) | DECORATIVE LIGHT TYPE B (EACH) | REMOVE EXISTING LIGHT FIXTURE (EACH) |
| 123+38                         | 24' LT |                                   | 1                              | 1                       |                                |                                      |
| 123+94                         | 27' LT | 7                                 |                                | 1                       | 1                              |                                      |
| TOTALS                         |        | 140                               | 56                             | 38                      | 20                             | 1                                    |

| ELECTRICAL SERVICE SCHEDULE    |        |                              |                           |
|--------------------------------|--------|------------------------------|---------------------------|
| STATION (TO CENTER OF STRUCT.) | OFFSET | ELECT SERV INSTALL SP (EACH) | ELECT SERV INSTALL (EACH) |
| 107+56                         | 83' LT | 1                            |                           |
| 123+95                         | 47' LT |                              | 1                         |
| TOTALS                         |        | 1                            | 1                         |

SUMMARY OF RACEWAY AND CONDUCTORS

| LOCATION |        | CONDUCTORS (FEET) |     |     |     |     |     | CONDUIT (FEET) |
|----------|--------|-------------------|-----|-----|-----|-----|-----|----------------|
| FROM     | TO     | #2                | #4  | #6  | #8  | #10 | 2"  |                |
| 100+32   | 100+81 |                   |     |     |     | 102 | 51  | EX             |
| 100+81   | 101+46 |                   | 212 |     |     | 316 |     | EX             |
| 101+46   | 101+96 |                   | 132 |     |     | 198 |     | EX             |
| 101+96   | 102+42 | 132               |     |     |     | 198 |     | EX             |
| 102+42   | 103+04 | 172               |     |     |     | 258 |     | EX             |
| 103+04   | 103+35 | 82                |     |     |     | 123 |     | EX             |
| 103+35   | 104+10 | 182               |     |     |     | 273 |     | EX             |
| 104+10   | 104+85 | 182               |     |     |     | 273 |     | EX             |
| 104+85   | 105+44 | 172               |     | 172 | 86  |     |     | EX             |
| 105+44   | 106+46 | 222               |     | 222 | 333 |     |     | EX             |
| 106+46   | 107+21 | 182               |     | 182 | 273 | 182 |     | EX             |
| 107+21   | 107+56 | 326               |     | 326 | 489 | 326 | 125 |                |
| 100+23   | 100+59 |                   |     |     | 92  | 46  | 40  |                |
| 100+59   | 101+19 |                   | 152 |     | 228 |     | 70  |                |
| 101+19   | 101+69 |                   | 132 |     | 198 |     | 60  |                |
| 101+69   | 102+40 |                   | 172 |     | 258 |     | 80  |                |
| 102+40   | 102+67 |                   | 102 |     | 153 |     | 45  |                |
| 102+67   | 103+35 |                   | 162 |     | 243 |     | 75  |                |
| 103+35   | 104+06 |                   | 192 |     | 288 |     | 90  |                |
| 104+06   | 105+09 | 232               |     | 232 | 116 |     | 110 |                |
| 105+09   | 105+55 | 122               |     | 122 | 61  |     | 55  |                |
| 105+55   | 106+40 | 222               |     | 222 | 111 | 444 | 105 |                |
| 106+40   | 107+50 | 252               |     | 252 | 126 | 504 | 120 |                |
| 107+50   | 107+56 | 172               |     | 172 | 86  | 344 | 80  |                |
| 107+56   | 108+09 | 322               |     |     | 605 | 322 | 155 |                |
| 108+09   | 108+74 | 182               |     |     | 405 | 162 | EX  |                |
| 108+74   | 109+54 | 182               |     |     | 455 | 182 | EX  |                |
| 109+54   | 110+29 | 212               |     |     | 318 |     | EX  |                |
| 110+29   | 110+92 | 132               |     |     | 198 |     | EX  |                |
| 110+92   | 111+80 | 172               |     |     | 258 |     | EX  |                |
| 111+80   | 112+15 | 142               |     |     | 213 |     | EX  |                |
| 112+15   | 112+74 | 172               |     |     | 258 |     | EX  |                |
| 112+74   | 113+16 |                   | 102 |     | 153 |     | EX  |                |
| 113+16   | 113+90 |                   | 172 |     | 258 |     | EX  |                |
| 113+90   | 114+58 |                   | 172 |     | 258 |     | EX  |                |

SUMMARY OF RACEWAY AND CONDUCTORS

| LOCATION |        | CONDUCTORS (FEET) |     |      |     |     |     | CONDUIT (FEET) |
|----------|--------|-------------------|-----|------|-----|-----|-----|----------------|
| FROM     | TO     | #2                | #4  | #6   | #8  | #10 | 2"  |                |
| 107+56   | 108+09 | 232               | 232 | 348  |     | 232 | 110 |                |
| 108+09   | 108+77 | 172               | 172 | 86   |     | 344 | 80  |                |
| 108+77   | 109+42 | 162               | 162 | 81   |     | 324 | 75  |                |
| 109+42   | 110+04 | 162               | 162 | 81   |     | 324 | 75  |                |
| 110+04   | 110+52 | 132               | 132 | 66   |     |     | 60  |                |
| 110+52   | 111+37 | 202               |     |      | 303 |     | 95  |                |
| 111+37   | 111+87 | 132               |     |      | 198 |     | 60  |                |
| 111+87   | 112+20 | 122               |     |      | 183 |     | 55  |                |
| 112+20   | 112+81 | 142               |     |      | 213 |     | 85  |                |
| 112+81   | 113+58 | 182               |     |      | 273 |     | 85  |                |
| 113+58   | 114+31 | 182               |     |      | 273 |     | 85  |                |
| 114+31   | 114+73 |                   |     |      | 122 | 61  | 55  |                |
| 115+15   | 115+52 |                   |     |      | 92  | 46  | EX  |                |
| 115+52   | 116+10 |                   |     |      | 284 | 66  | EX  |                |
| 116+10   | 116+88 |                   |     |      | 354 | 98  | EX  |                |
| 116+88   | 117+77 | 242               |     |      | 363 |     | EX  |                |
| 117+77   | 118+57 | 162               |     |      | 243 | 162 | EX  |                |
| 118+57   | 119+33 | 182               |     |      | 465 | 182 | EX  |                |
| 119+33   | 120+29 | 282               |     |      | 917 |     | EX  |                |
| 120+29   | 121+19 | 192               |     |      | 672 |     | EX  |                |
| 121+19   | 121+89 | 172               | 172 | 430  |     |     | EX  |                |
| 121+89   | 122+24 | 102               | 102 | 255  |     |     | EX  |                |
| 122+24   | 123+95 | 492               | 492 | 1230 |     |     | 240 |                |
| 115+28   | 116+15 |                   |     |      | 318 | 212 | 100 |                |
| 116+15   | 116+87 |                   |     |      | 228 | 152 | 70  |                |
| 116+87   | 117+06 | 112               |     |      | 56  | 112 | 50  |                |
| 117+06   | 117+92 | 182               |     |      | 273 |     | EX  |                |
| 117+92   | 118+64 | 182               |     |      | 455 | 182 | EX  |                |
| 118+64   | 119+34 | 172               |     |      | 430 | 172 | EX  |                |
| 119+34   | 119+95 | 172               | 172 | 258  |     | 172 | EX  |                |
| 119+95   | 120+51 | 132               | 132 | 198  |     | 132 | EX  |                |
| 120+51   | 121+20 | 172               | 172 | 258  |     | 172 | EX  |                |
| 121+20   | 122+04 | 404               |     | 303  |     | 202 | EX  |                |
| 122+04   | 123+95 | 944               |     | 708  |     | 472 | 230 |                |
| 123+95   | 124+12 |                   |     |      |     | 430 | EX  |                |

SUMMARY OF RACEWAY AND CONDUCTORS

| LOCATION |        | CONDUCTORS (FEET) |      |      |       |      |      | CONDUIT (FEET) |
|----------|--------|-------------------|------|------|-------|------|------|----------------|
| FROM     | TO     | #2                | #4   | #6   | #8    | #10  | 2"   |                |
| 123+38   | 124+12 |                   |      |      |       |      | 480  | EX             |
| 124+12   | 123+95 |                   |      |      |       |      | 404  | 75             |
| 122+61   | 123+38 |                   |      |      |       |      | 455  | 85             |
| 123+38   | 123+94 |                   |      |      |       |      | 355  | 65             |
| 123+94   | 123+95 |                   |      |      |       |      | 180  | 30             |
| TOTALS   |        | 4148              | 7802 | 4004 | 19480 | 8685 | 3055 |                |

208 East Main Street, Suite 100  
Belleville, Illinois 62220  
618.233.5677 phone  
618.233.5977 fax  
www.kaskaskiaeng.com

**Kaskaskia Engineering Group, LLC**

PROFESSIONAL REGISTRATIONS  
Illinois Professional Design Firm  
Professional Engineering Group

PREPARED BY:

**BRIC PARTNERSHIP, LLC**  
CONSULTING ENGINEERS

100 EAST WASHINGTON, SUITE 200  
BELLEVILLE, IL 62220  
TEL: 618.277.5000  
FAX: 618.277.5027

ELECTRICAL SCHEDULES

PROJECT TITLE:  
SEC 10-00085-01-1LS  
NORTH MAIN STREET STREETSCAPE  
CITY OF EDWARDSVILLE, ILLINOIS

DESIGNED BY: JEN  
DRAWN BY: JEN  
CHECKED BY: RJD  
DATE OF PRE-FINAL: 8-1-13  
DATE OF FINAL: 10-12-13

SHEET NO. 16 OF 16 SHEETS  
PROJECT NUMBER: 09-1074.01

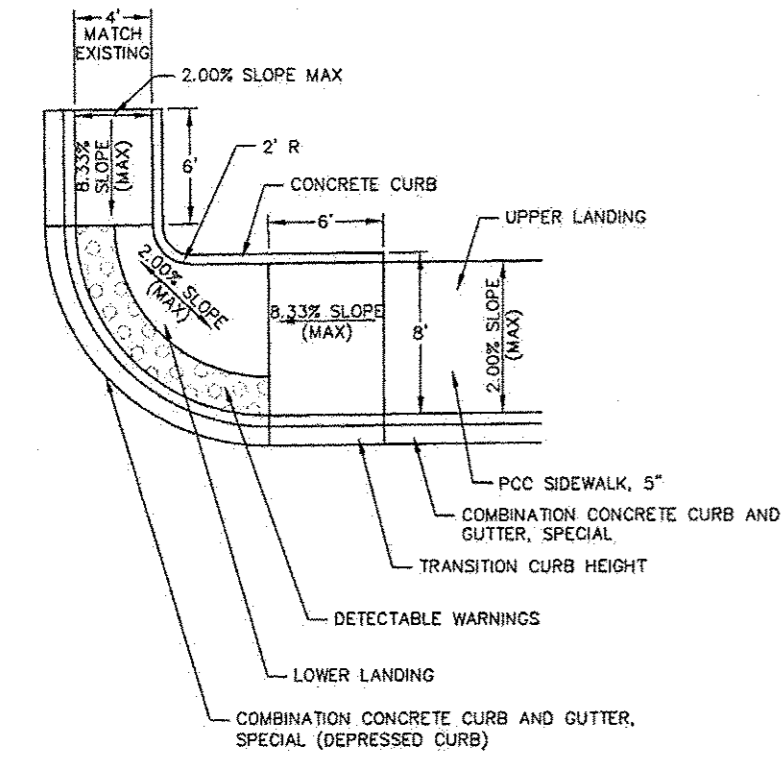
208 East Main Street, Suite 100  
 Belleville, Illinois 62220  
 618.233.5877 phone  
 618.233.5977 fax  
 www.kaskasiaeng.com

LICENSE NO. 184.004773  
 20-5080586

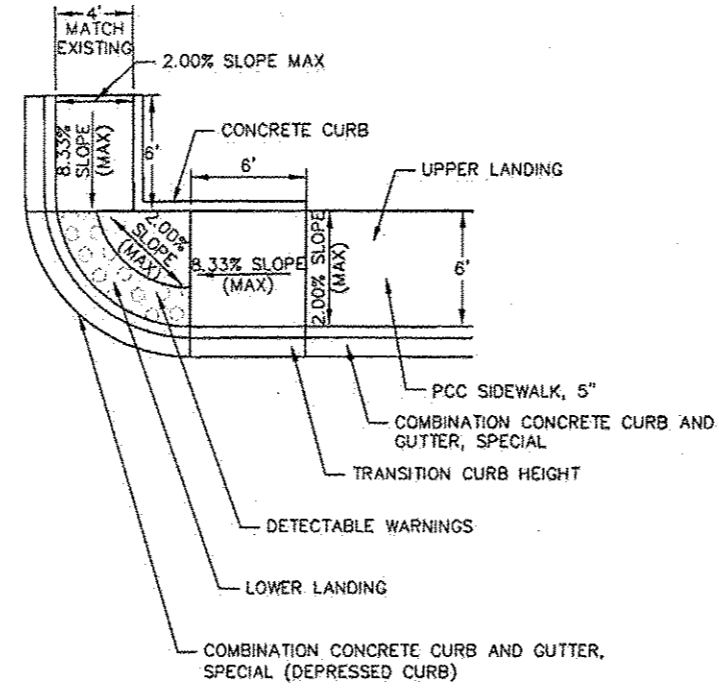
**Kaskasia**  
 Engineering Group, LLC

PROFESSIONAL REGISTRATIONS  
 Illinois Professional Design Firm  
 Professional Engineering Group

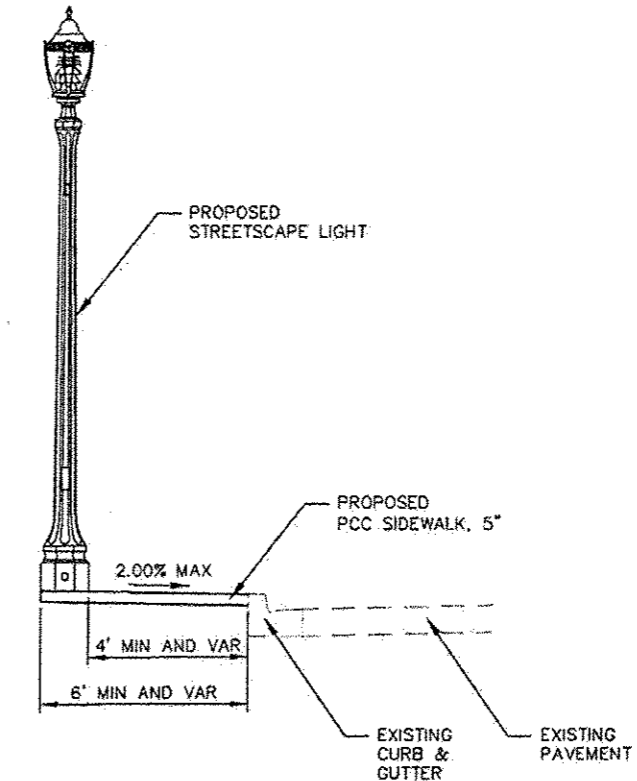
PREPARED BY:



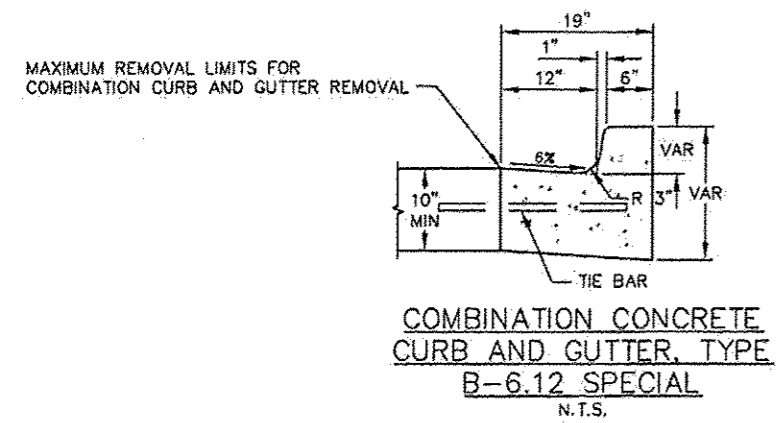
CURB RAMP DETAIL NW QUADRANT W. HIGH AND N. MAIN STREET  
 N.T.S.



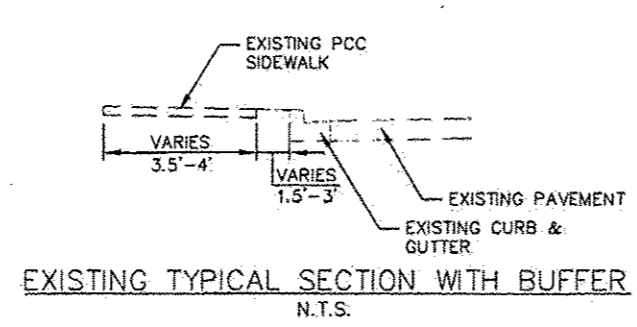
CURB RAMP DETAIL NW QUADRANT W. DUNN AND N. MAIN STREET  
 N.T.S.



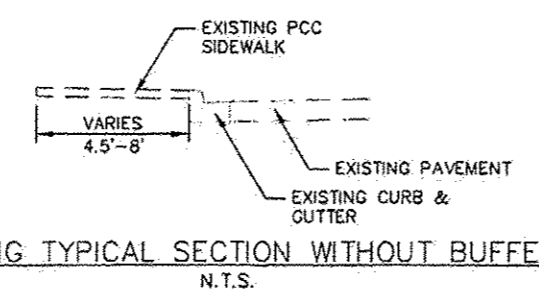
TYPICAL SECTION W/LIGHT DETAIL  
 N.T.S.



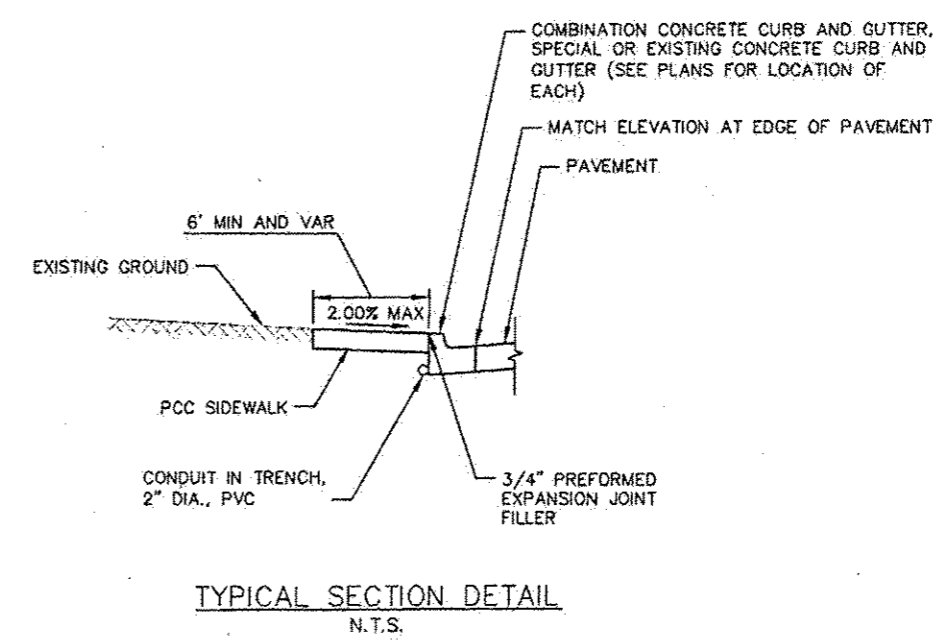
COMBINATION CONCRETE CURB AND GUTTER, TYPE B-6.12 SPECIAL  
 N.T.S.



EXISTING TYPICAL SECTION WITH BUFFER  
 N.T.S.



EXISTING TYPICAL SECTION WITHOUT BUFFER  
 N.T.S.



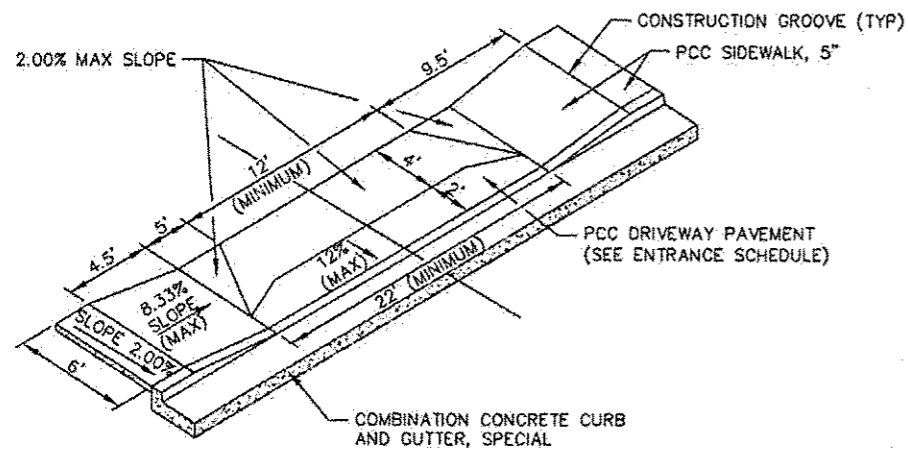
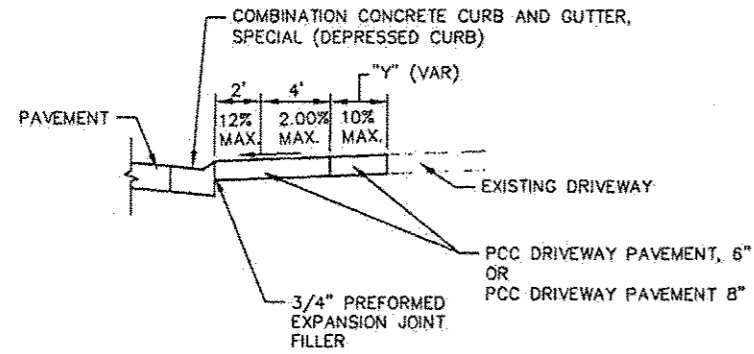
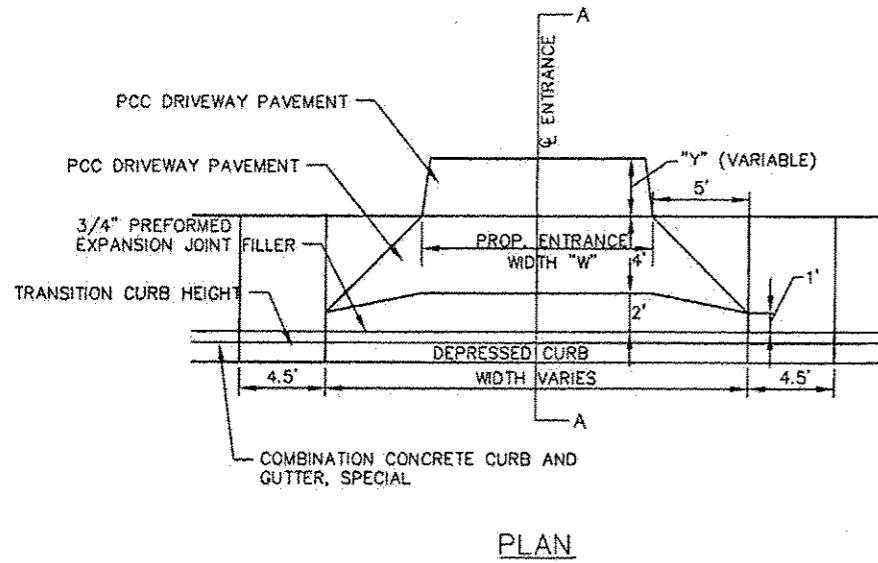
TYPICAL SECTION DETAIL  
 N.T.S.

FILE: P:\09-1074 Edwardsville N Main St Streetscape\10\_CAD\CAD\_Sheets\09-1074-REP\_Details.dwg

SHEET TITLE: ROADWAY DETAILS & TYPICAL SECTIONS

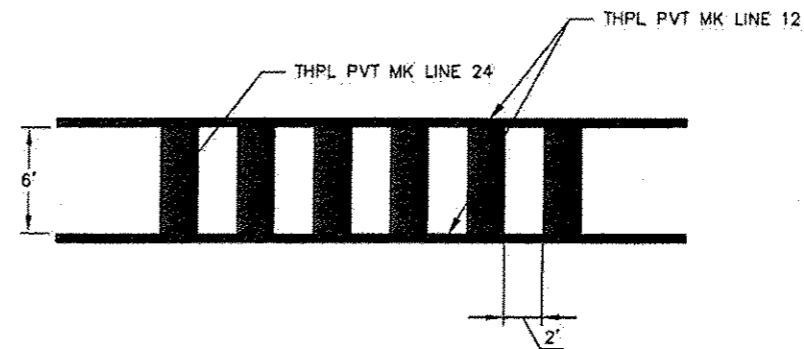
PROJECT TITLE: SEC 10-00085-01-LS  
 NORTH MAIN STREET STREETSCAPE  
 CITY OF EDWARDSVILLE, ILLINOIS

|                            |       |
|----------------------------|-------|
| DESIGNED BY: SMS           | SHEET |
| DRAWN BY: SMS              | 17    |
| CHECKED BY: LDC            |       |
| DATE OF PRE-FINAL: 8/17/12 |       |
| DATE OF FINAL: 10/12/12    |       |
| SHEET NO. 17 OF 18 SHEETS  |       |
| PROJECT NUMBER 09-1074.01  |       |



ENTRANCE SCHEDULE

| STATION      | OFFSET | ENTRANCE TYPE | ENTRANCE WIDTH "W" (FOOT) | ENTRANCE DEPTH "Y" (FOOT) | DRIVE PAVEMENT REM (SQ YD) | PCC DRIVEWAY PAVT 6 (SQ YD) | PCC DRIVEWAY PAVT 8 (SQ YD) |
|--------------|--------|---------------|---------------------------|---------------------------|----------------------------|-----------------------------|-----------------------------|
| 100+88       | LT     | C.E.          | 24.0                      | 0.0                       | 26                         |                             | 26                          |
| 101+52       | LT     | C.E.          | 24.0                      | 0.0                       | 23                         |                             | 23                          |
| 101+92       | LT     | C.E.          | 31.0                      | 0.0                       | 26                         |                             | 27                          |
| 104+44       | LT     | C.E.          | 12.0                      | 7.0                       | 16                         |                             | 20                          |
| 104+78       | LT     | C.E.          | 16.0                      | 5.0                       | 43                         |                             | 24                          |
| 105+75       | LT     | C.E.          | 24.0                      | 0.0                       | 23                         |                             | 20                          |
| 106+61       | LT     | C.E.          | 35.0                      | 0.0                       | 32                         |                             | 28                          |
| 108+35       | LT     | C.E.          | 24.0                      | 0.0                       | 20                         |                             | 20                          |
| 109+14       | LT     | C.E.          | 24.0                      | 0.0                       | 13                         |                             | 20                          |
| 111+25       | LT     | P.E.          | 12.0                      | 0.0                       | 8                          | 12                          |                             |
| 111+69       | LT     | C.E.          | 24.0                      | 0.0                       | 19                         |                             | 20                          |
| 112+03       | LT     | C.E.          | 24.0                      | 0.0                       | 27                         |                             | 20                          |
| 115+88       | LT     | C.E.          | 32.0                      | 4.0                       | 36                         |                             | 40                          |
| 116+41       | LT     | C.E.          | 32.0                      | 0.0                       | 24                         |                             | 26                          |
| 118+41       | LT     | C.E.          | 26.0                      | 5.0                       | 32                         |                             | 33                          |
| <b>TOTAL</b> |        |               |                           |                           | <b>368</b>                 | <b>12</b>                   | <b>347</b>                  |



208 East Main Street, Suite 100  
Belleville, Illinois 62220  
618.233.5877 phone  
618.233.5977 fax  
www.kaskaskiaeng.com

**Kaskaskia**  
Engineering Group, LLC

PROFESSIONAL REGISTRATIONS  
Illinois Professional Design Firm  
Professional Engineering Group

LICENSE NO. 184-004773  
20-5080586

PREPARED BY:

SHEET TITLE:  
**ROADWAY DETAILS & ENTRANCE SCHEDULE**

PROJECT TITLE:  
**SEC 10-00085-01-LS  
NORTH MAIN STREET STREETSCAPE  
CITY OF EDWARDSVILLE, ILLINOIS**

|                             |           |
|-----------------------------|-----------|
| DESIGNED BY: SAIS           | SHEET     |
| DRAWN BY: SAIS              | <b>18</b> |
| CHECKED BY: LDC             |           |
| DATE OF PRE-FINAL: 8/17/12  |           |
| DATE OF FINAL: 10/12/12     |           |
| SHEET NO. IN. OF IN. SHEETS |           |
| PROJECT NUMBER 09-1073.01   |           |

FILE: P:\09-1074 Edwardsville N Main St Streetscape\10\_CAD\CADD Sheets\09-1074-TEP Details.dwg