

INDEX OF SHEETS 03-08-13 LETTING ITEM 038

- SHEET 1. COVER SHEET
- SHEET 2. TYPICAL CROSS SECTION, SUMMARY OF QUANTITIES, STRUCTURAL DESIGN, BITUMINOUS MIXTURE TABLE
- SHEET 3. TYPICAL ENTRANCE DETAIL, MAILBOX DETAILS, SIDE ROAD RETURN, GENERAL NOTES

STANDARDS

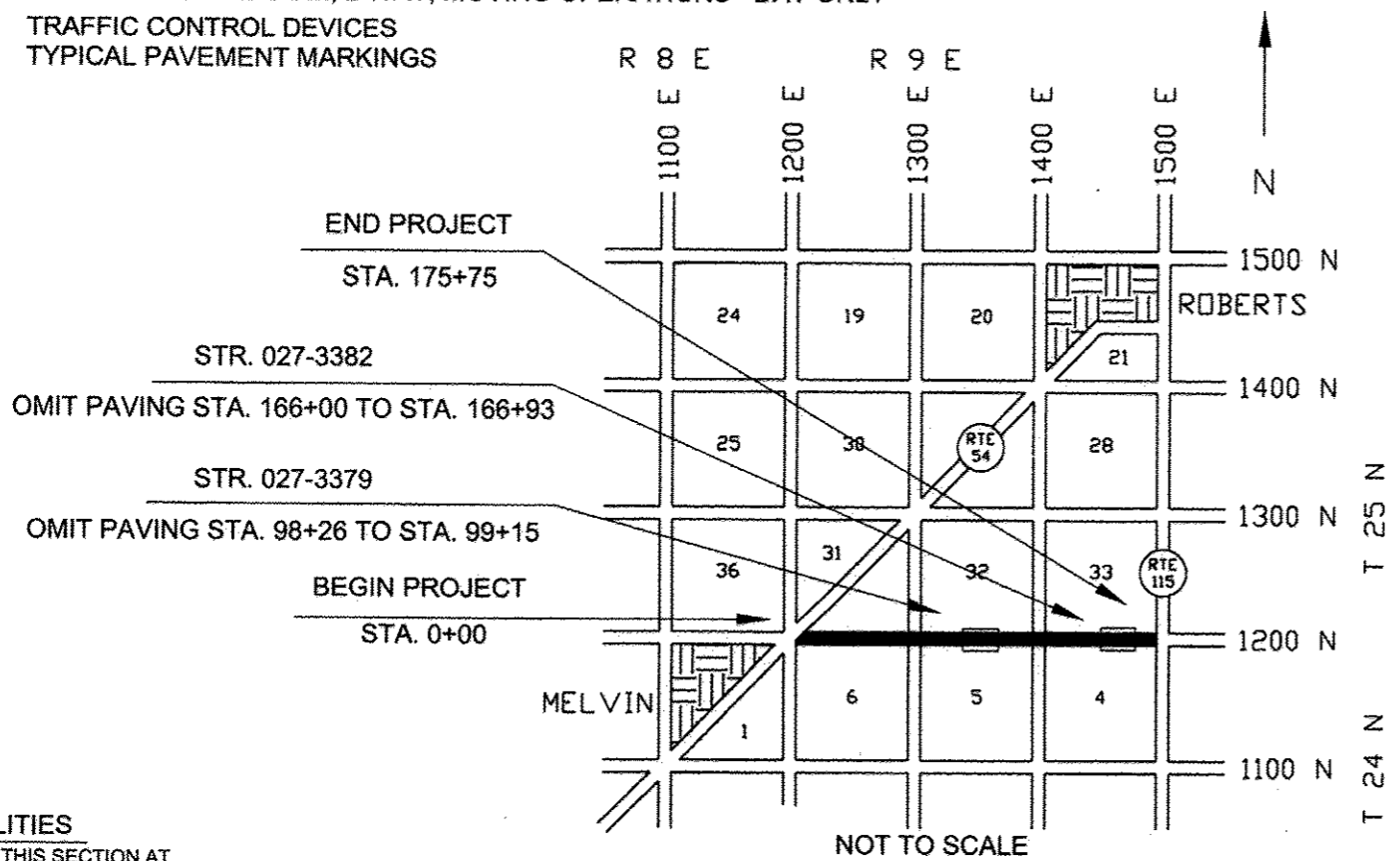
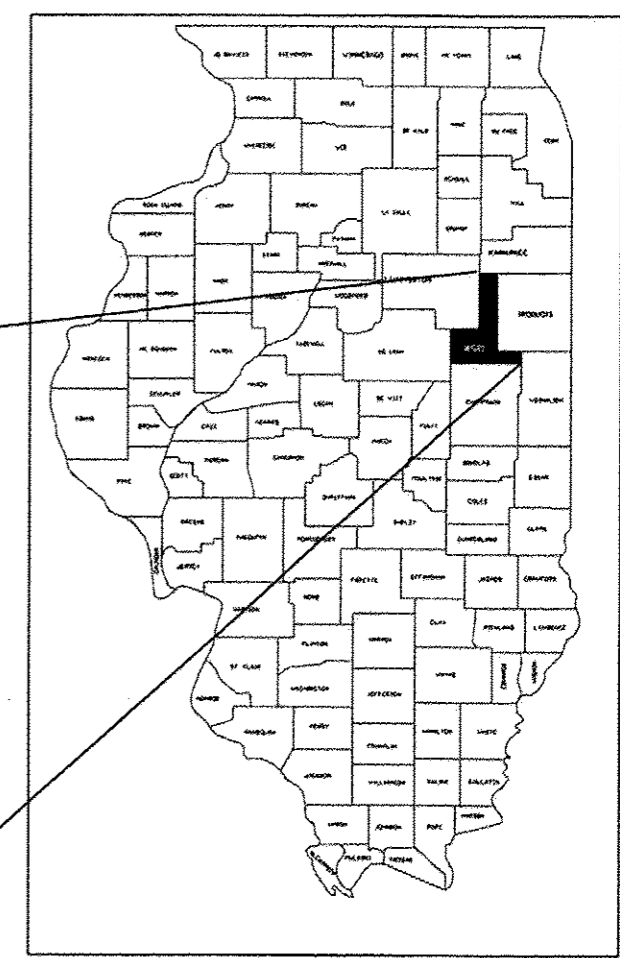
- 701301-04 LANE CLOSURE 2 LANE, 2 WAY, SHORT TIME OPERATIONS
- 701306-03 LANE CLOSURE 2 LANE, 2 WAY, SLOW MOVING OPERATIONS - DAY ONLY FOR SPEEDS \geq 45 MPH
- 701311-03 LANE CLOSURE 2 LANE, 2 WAY, MOVING OPERATIONS - DAY ONLY
- 701901-02 TRAFFIC CONTROL DEVICES
- 780001-03 TYPICAL PAVEMENT MARKINGS

STATE OF ILLINOIS
DEPARTMENT OF TRANSPORTATION
DIVISION OF HIGHWAYS

PLANS FOR
PROPOSED LOCAL AGENCY IMPROVEMENT
FEDERAL-AID SECONDARY PROJECT

C.H. 3 (MELVIN - SIBLEY ROAD)
F.A.S. ROUTE 341 SECTION 13-00119-00-RS FORD COUNTY
PROJECT RS- 0341(111)
JOB NO. C-93-095-12

FAS NO.	SECTION	COUNTY	TOTAL SHEETS	SHEET NO.
341	13-00119-00-RS		3	1
PROJECT RS - 0341(111) CONTRACT # 87534				



UTILITIES

UTILITIES ON THIS SECTION AT VARIOUS LOCATIONS INCLUDES TO THE BEST OF OUR KNOWLEDGE:

FRONTIER TELEPHONE COMPANY (UNDERGROUND)
OVERHEAD POWER - EASTERN ILLINI

CONTRACTORS OR SUBCONTRACTORS SHALL CONTACT J.U.L.I.E. (1-800-892-0123) AT LEAST 72 HOURS PRIOR TO ANY EXCAVATION FOR UTILITIES LOCATION

JOB NO. C-93-095-12
CONTRACT NO. 87534

GROSS LENGTH = 17575' = 3.329 MI.
NET LENGTH = 17395' = 3.295 MI.

THE PLANS FOR THIS SECTION WERE PREVIOUSLY APPROVED BY THE DEPARTMENT AS SECTION 17-Q, SECTION 17Q-1, SECTION 91-00069-00-WR & SECTION 92-00071-00-WR
FUNCTIONAL CLASSIFICATION: MAJOR COLLECTOR

Gregory L. Perkinson
ILLINOIS PROFESSIONAL NO. 062-035801

EXPIRES 11-30-2013

CURRENT (2013) ADT = 225 - 88% PC
9% SU
3% MU
DESIGN ADT (2023) = 300
DESIGN SPEED = 50 MPH

THE ACCEPTANCE OF THIS PROJECT IS BASED ON THE MINIMUM DESIGN CRITERIA UNDER 3R GUIDELINES.

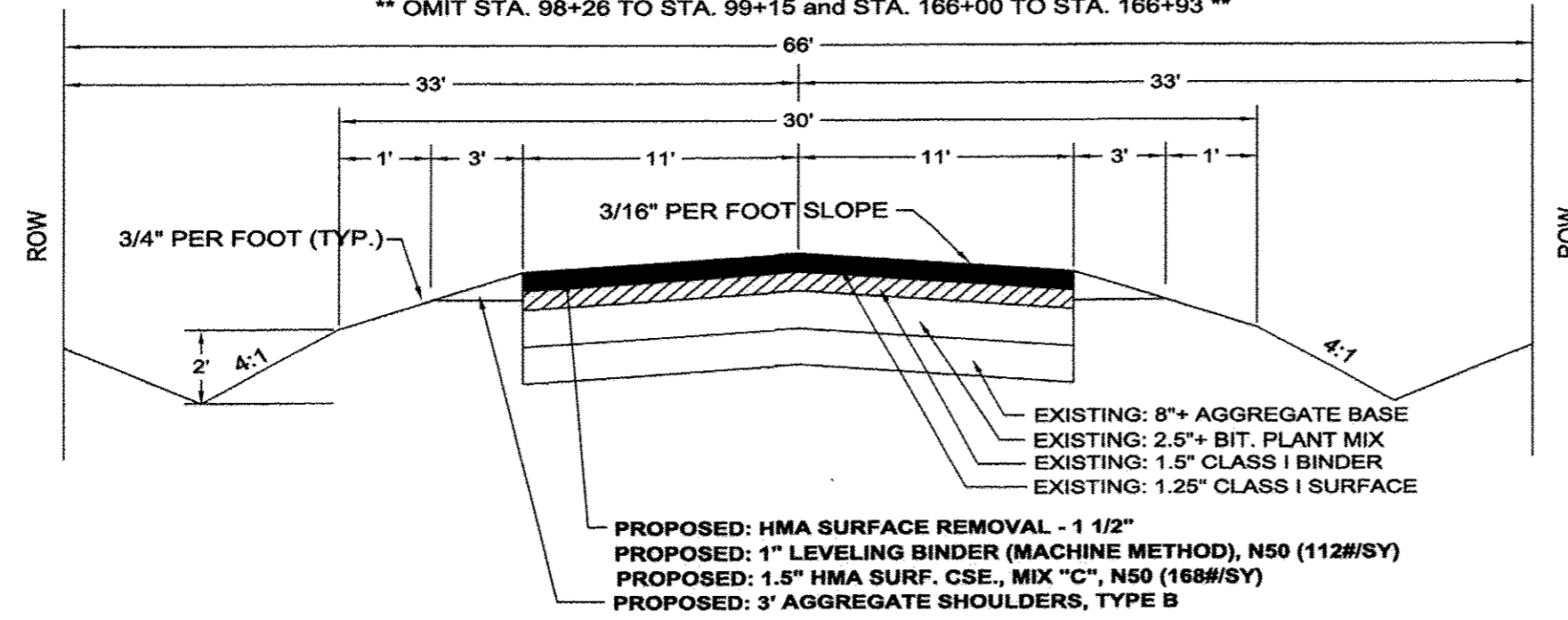
APPROVED	<i>December 18, 2012</i> <i>Gregory L. Perkinson</i> FORD COUNTY, COUNTY ENGINEER
PASSED	<i>12-28-12</i> <i>Don R E O</i> DISTRICT 3 ENGINEER OF LOCAL ROADS & STREETS
Releasing for Bid Based on Limited Review	<i>12-28-12</i> <i>Paul [Signature]</i> DEPUTY DIRECTOR OF HIGHWAYS, REGION 2 ENGINEER STATE OF ILLINOIS DEPARTMENT OF TRANSPORTATION



FAS NO.	SECTION	COUNTY	TOTAL SHEETS	SHEET NO.
341	13-00119-00-RS		3	2
PROJECT RS-0341(111)				
CONTRACT # 87534				

TYPICAL CROSS SECTION
SECTION 13-00119-00-RS (MELVIN- SIBLEY ROAD)
STATION 0+00 TO 175+75

** OMIT STA. 98+26 TO STA. 99+15 and STA. 166+00 TO STA. 166+93 **



STRUCTURAL DESIGN
 STA. 0+00 TO STA. 175+75
 SEC. 13-00119-00-RS

STRUCTURAL DESIGN TRAFFIC YEAR	2023
CURRENT A.D.T.	225
A.D.T. 2023	300
P.V.	264
S.U.	27
M.U.	9
CLASS	IV
MINIMUM SOIL SUPPORT IBV	3
TRAFFIC FACTOR	0.010
Dt REQUIRED	2.00

EXISTING BASE:	
8"+ AGGREGATE BASE	8" X 0.06 = 0.48
2.5" BIT PLANT MIX (LA)	2.5" X 0.12 = 0.30
2.75" BIT. CONC CL I (POST 1955)	2.75" X 0.30 = 0.83
SUBTOTAL EXISTING	1.61
PROPOSED:	
COLD MILL 1.5" EXISTING SURFACE	1.5" X - 0.30 = - 0.45
1" LEVEL BINDER, N50	1" X 0.40 = 0.40
1.50" HMA SURF. CSE., MIX "C", N50	1.50" X 0.40 = 0.60
Dt TOTAL	2.16

SUMMARY OF QUANTITIES

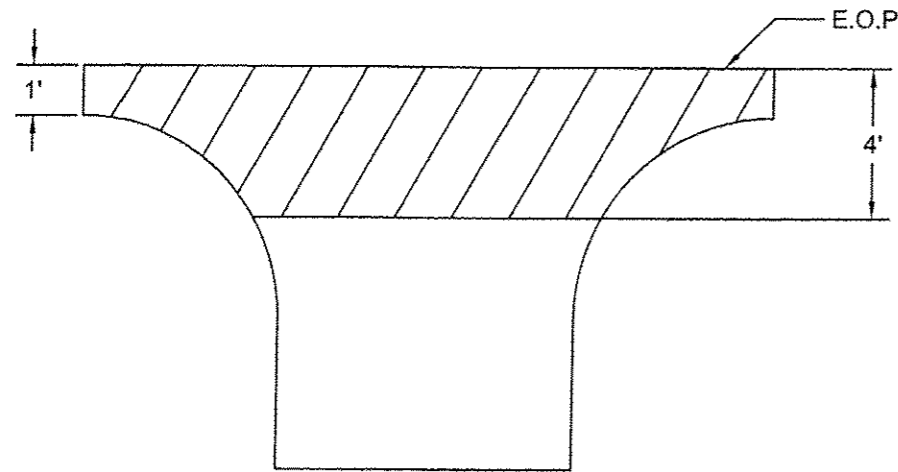
CODE NO.	ITEM	UNIT	QUANTITY
40600100	BITUMINOUS MATERIALS (PRIME COAT)	GALLON	3,260
40600300	AGGREGATE (PRIME COAT)	TON	40
40600625	LEVELING BINDER (MACHINE METHOD), N50	TON	2,410
40600990	TEMPORARY RAMP	SQ YD	70
40603310	HOT- MIX ASPHALT SURFACE COURSE, MIX "C", N50	TON	3,620
40800050	INCIDENTAL HOT-MIX ASPHALT SURFACING	TON	50
44000155	HOT-MIX ASPHALT SURFACE REMOVAL, 1-1/2"	SQ YD	42,520
* 48101200	AGGREGATE SHOULDERS, TYPE B	TON	1,000
67100100	MOBILIZATION	L SUM	1
70100460	TRAFFIC CONTROL AND PROTECTION, STANDARD 701306	L SUM	1
70300100	SHORT TERM PAVEMENT MARKING	FOOT	3,515
# 78001110	PAINT PAVEMENT MARKING - LINE 4"	FOOT	5,715

* INDICATES SEE SPECIAL PROVISIONS
 # INDICATES SPECIALTY ITEM

BITUMINOUS MIXTURE TABLE

	LEVEL BINDER	HMA SURFACE	INCIDENTAL HMA
PG GRADE	PG 64-22	PG 64-22	PG 64-22
DESIGN AIR VOIDS	4.0 % @ N50	4.0 % @ N50	4.0 % @ N50
MIX COMPOSITION	IL-9.5	IL 9.5	IL 9.5
FRICTION AGGREGATE		MIXTURE "C"	MIXTURE "C"
DENSITY CONTROL METHOD	SATISFACTION OF ENG.	CORRELATION	SATISFACTION OF ENG.

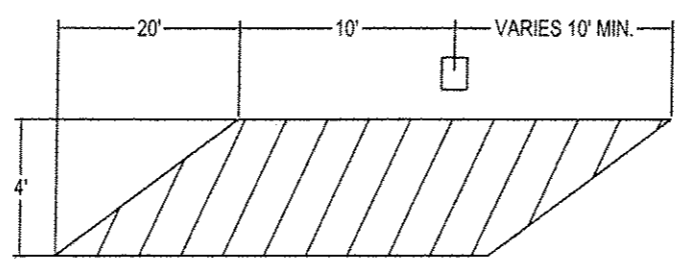
FAS NO.	SECTION	COUNTY	TOTAL SHEETS	SHEET NO.
341	13-00119-00-RS		3	3
PROJECT RS-0341(111)				
CONTRACT # 87534				



TYPICAL FIELD & PRIVATE ENTRANCE

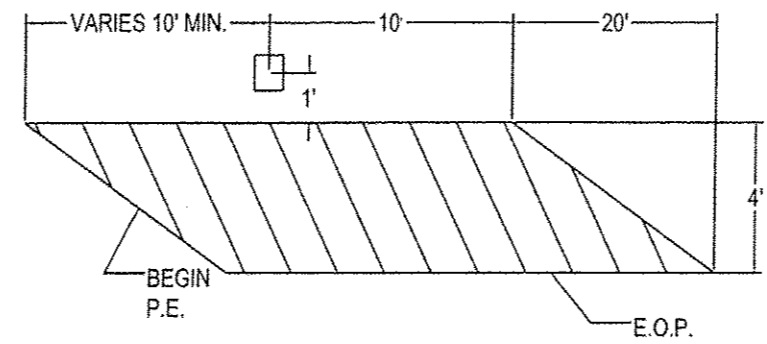
36 EACH

LT. STA.	LT. STA.	RT. STA.	RT. STA.
17+22	97+60	0+99	91+88
43+82	99+82	4+73	94+69
56+91	131+74	18+33	97+60
83+50	136+65	35+60	99+82
91+64	146+23	43+82	112+75
93+22	158+50	44+63	136+65
94+69	165+27	49+29	158+50
95+90 (2)	175+60	52+13	165+27
		59+95	171+40
		90+75	



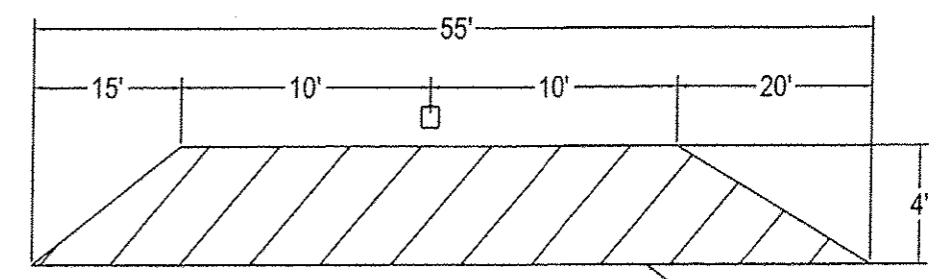
TYPICAL MAILBOX FOLLOWING

1 EACH
STA. 49+50 RT



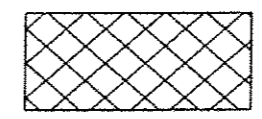
TYPICAL MAILBOX LEAD IN

3 EACH
35+38 RT 44+33 RT 94+45 RT

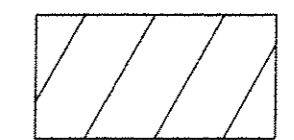


TYPICAL MAILBOX TURN OUT

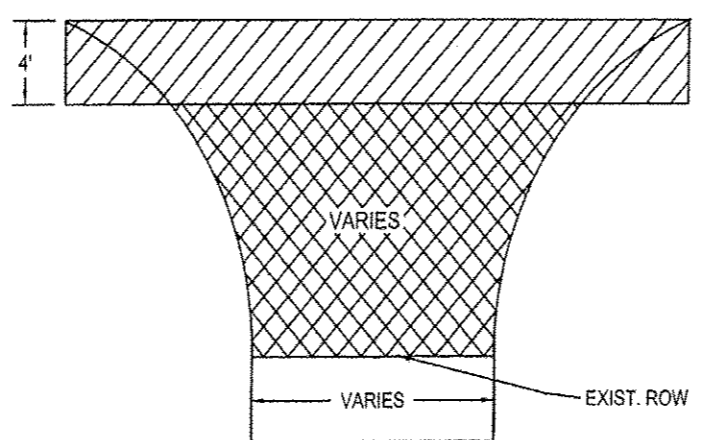
0 EACH



AREA TO BE PAID AS
INCIDENTAL BITUMINOUS SURFACING



AREA TO BE CONSTRUCTED
DURING MAINLINE PAVING OPERATIONS
SLOPE = 3/4" PER FOOT



TYPICAL SIDE ROAD RETURN

6 EACH
STA. 14+00 RT & LT
STA. 70+36 RT & LT
STA. 123+23 RT & LT

NOTES

1. USE SAME MAINLINE MATERIAL FOR SIDE ROAD RETURNS, FIELD & PRIVATE ENTRANCES, AND MAILBOXES.
2. AGGREGATE SHOULDERS TO BE PLACED BEHIND SIDE ROAD RETURNS, FIELD & PRIVATE ENTRANCES, AND MAILBOXES AS DIRECTED BY THE ENGINEER.
3. SHORT TERM PAVEMENT MARKINGS TO BE REMOVED BY FORD COUNTY PERSONNEL.
4. THE FOLLOWING APPLICATION RATES HAVE BEEN ASSUMED IN CALCULATING QUANTITIES:

AGGREGATE SHOULDERS	2.00 TON / CU YD
BIT MATL (PR CT)	0.075 GAL / SQ YD
AGGREGATE (PR CT)	0.001 TON / SQ YD
HOT MIX ASPHALT	112 # / SQ YD / INCH
SHORT TERM PVMT MKING	4 FT / 40 FT OF APPL.