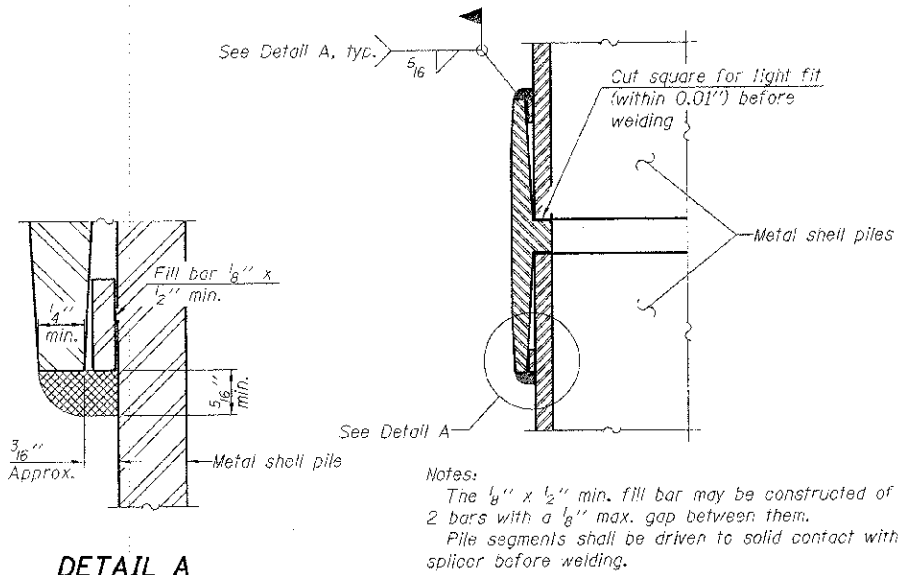
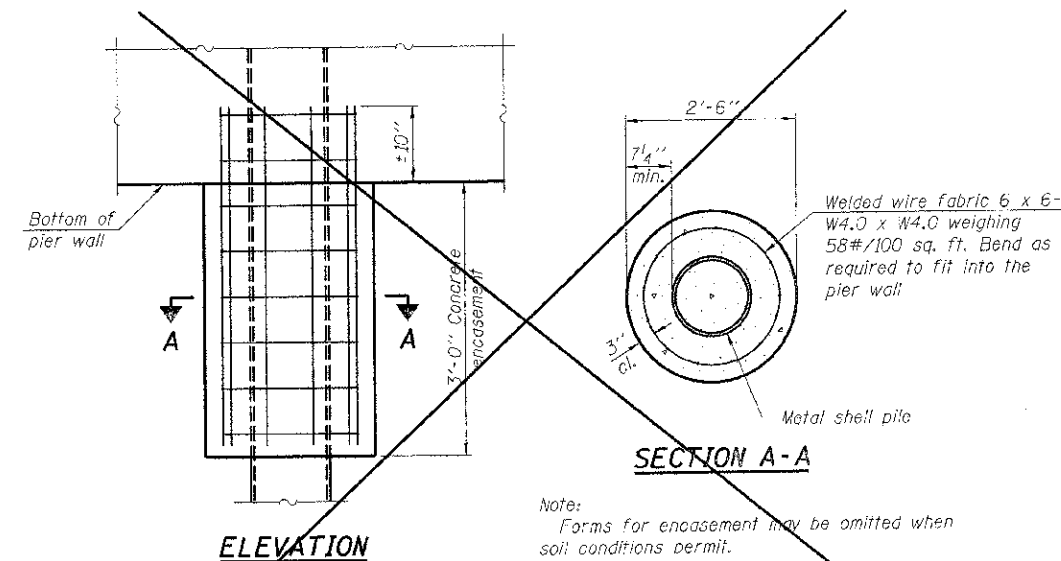


**METAL SHELL PILE TABLE**

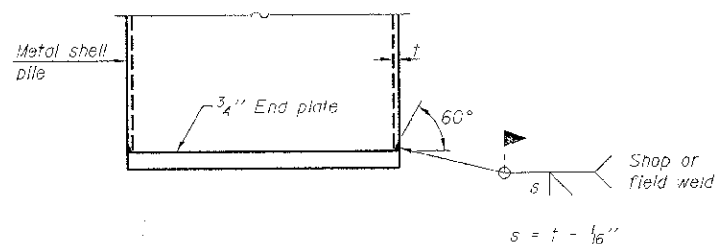
Designation and outside diameter	Wall thickness t	Weight per foot (Lbs./ft.)	Inside volume (yd. <sup>3</sup> /ft.)
PP12	0.179"	22.60	0.0274
PP12	0.250"	31.37	0.0267
PP14	0.250"	36.71	0.0368
PP14	0.312"	45.61	0.0361



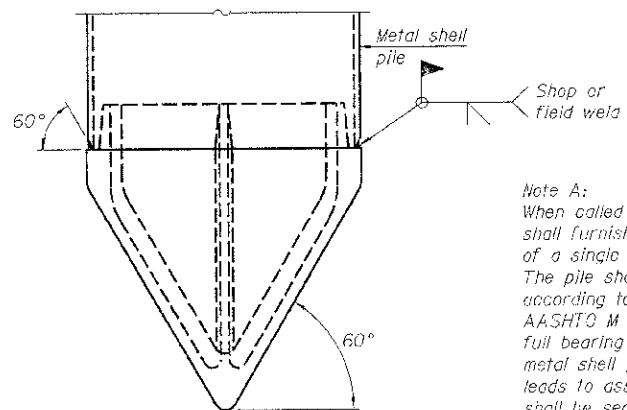
**WELDED COMMERCIAL SPLICE**



**CONCRETE ENCASEMENT AT PIERS**



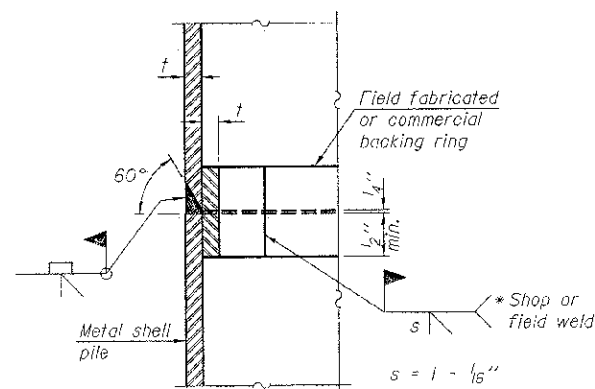
**END PLATE ATTACHMENT**



**METAL SHELL PILE SHOE ATTACHMENT**

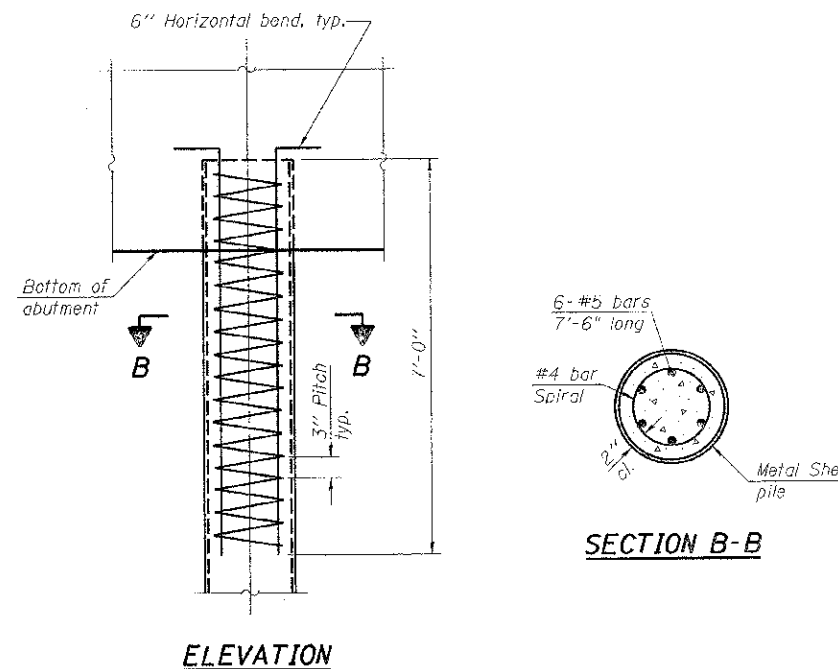
(See Note A)

Note A:  
When called for on the plans, the Contractor shall furnish metal shell pile shoes consisting of a single piece conical pile point as shown. The pile shoes shall be cast in one piece steel according to either ASTM A 148 Grade 90-60 or AASHTO M 103 Grade 65-35 and shall provide full bearing over the full circumference of the metal shell pile. The pile shoe shall have tapered leads to assure proper alignment and fitting and shall be secured to the pile with a circumferential weld.



**COMPLETE PENETRATION WELD SPLICE**

\* Field fabricated backing ring may be made from pile shell by removing segment to allow reducing circumference and vertically rejoin with partial joint penetration weld.



**METAL SHELL REINFORCEMENT AT WINGWALL FOOTING**

Note:  
The metal shell piles shall be according to ASTM A 252 Grade 3.

F-MS

7-1-10

FILE NAME =	USER NAME =	DESIGNED <i>MMH</i>	REVISED
		CHECKED <i>JBK</i>	REVISED
		DRAWN <i>RAP</i>	REVISED
		DATE	REVISED



PH(309)788-7644 ROCK ISLAND, ILLINOIS FAX(309)788-7691

METAL SHELL PILES  
STRUCTURE NO. 101-5158

SHEET NO. 4 OF 7 SHEETS

F.A.J. RTE.	SECTION	COUNTY	TOTAL SHEETS	SHEET NO.
9878	12-00356-01-BR	WINNEBAGO	16	11
SN. 101-5158			CONTRACT NO. 85577	
ILLINOIS FED. AID PROJECT				