

STATE OF ILLINOIS  
DEPARTMENT OF TRANSPORTATION  
DIVISION OF HIGHWAYS

**PROPOSED  
HIGHWAY PLANS**

FAP ROUTE 770 (IL 128)  
SECTION D7 HMA SAFETY SHLD 2013-1  
PROJECT ACHSIP-ACF-0770(016)  
SAFETY IMPROVEMENTS  
SHELBY AND MOULTRIE COUNTIES

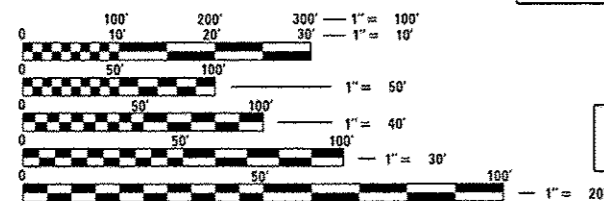
C-97-022-12

FOR INDEX OF SHEETS, SEE SHEET NO. 2

STATION EQUATIONS

STA 633+22.98 BK = STA 633+18.57 AH  
STA 650+40.37 BK = STA 650+44.78 AH  
STA 782+81.02 BK = STA 782+95.55 AH  
STA 822+72.07 BK = STA 822+64.12 AH  
STA 842+04.98 BK = STA 842+12.93 AH

ADT (2011) = 2600



FULL SIZE PLANS HAVE BEEN PREPARED USING STANDARD ENGINEERING SCALES. REDUCED SIZED PLANS WILL NOT CONFORM TO STANDARD SCALES. IN MAKING MEASUREMENTS ON REDUCED PLANS, THE ABOVE SCALES MAY BE USED.

J.U.L.I.E.  
JOINT UTILITY LOCATION INFORMATION FOR EXCAVATION  
1-800-892-0123  
OR 811

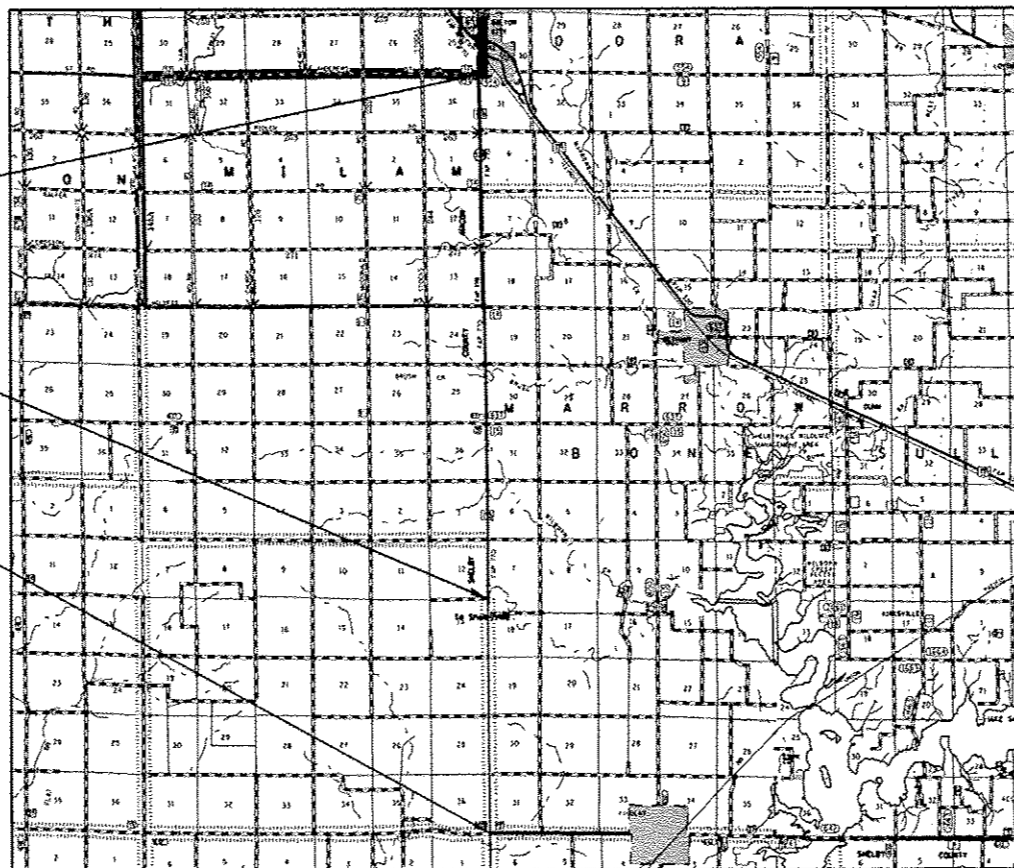
PROJECT ENGINEER: MARK DAUGHERTY  
PROJECT MANAGER: BRIAN BIERMAN

CONTRACT NO. 74552

PROJECT ENDS  
LT STA 1111+21  
RT STA 1109+43

MOULTRIE/SHELBY CO.  
STA 632+79.24

PROJECT BEGINS  
STA 421+21

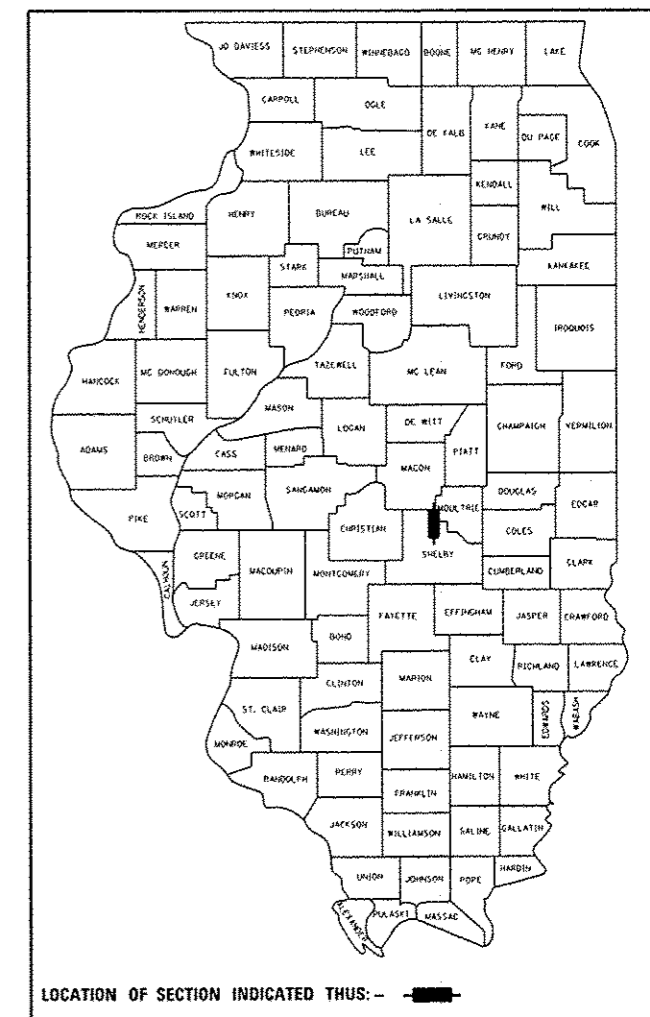


GROSS LENGTH = 68,985 FT. = 13.1 MILE  
NET LENGTH = 67,326 FT. = 12.8 MILE

F.A.P. RTE.	SECTION	COUNTY	TOTAL SHEETS	SHEET NO.
770	.	**	8	1

ILLINOIS CONTRACT NO. 74552  
\* D7 HMA SAFETY SHLD 2013-1  
\*\* Shelby & Moultrie \*\*\* 8+1=9

D-97-014-12



STATE OF ILLINOIS  
DEPARTMENT OF TRANSPORTATION  
DIVISION OF HIGHWAYS

SUBMITTED SEPT 11 20 12  
*Roger L. Ditchell/loc*  
DEPUTY DIRECTOR OF HIGHWAYS, REGION ENGINEER

Dec 7 20 12  
*John D. Baranelli, P.E./loc*  
actg ENGINEER OF DESIGN AND ENVIRONMENT

Dec 7 20 12  
*William R. Frenler*  
actg DIRECTOR OF HIGHWAYS, CHIEF ENGINEER

PRINTED BY THE AUTHORITY  
OF THE STATE OF ILLINOIS