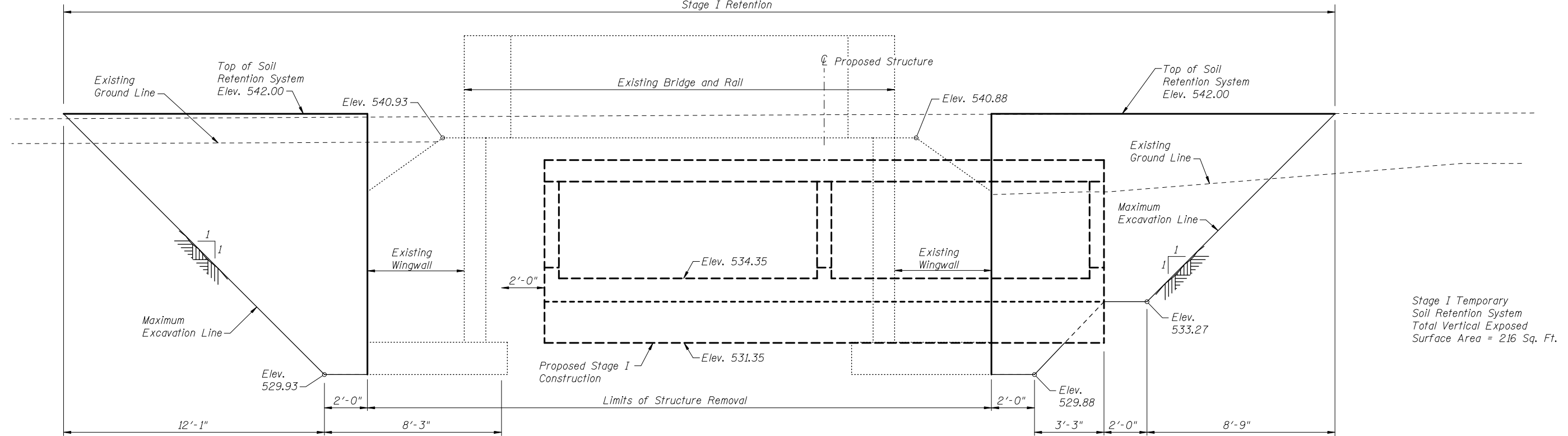


STATE OF ILLINOIS
DEPARTMENT OF TRANSPORTATION

Stage I Retention

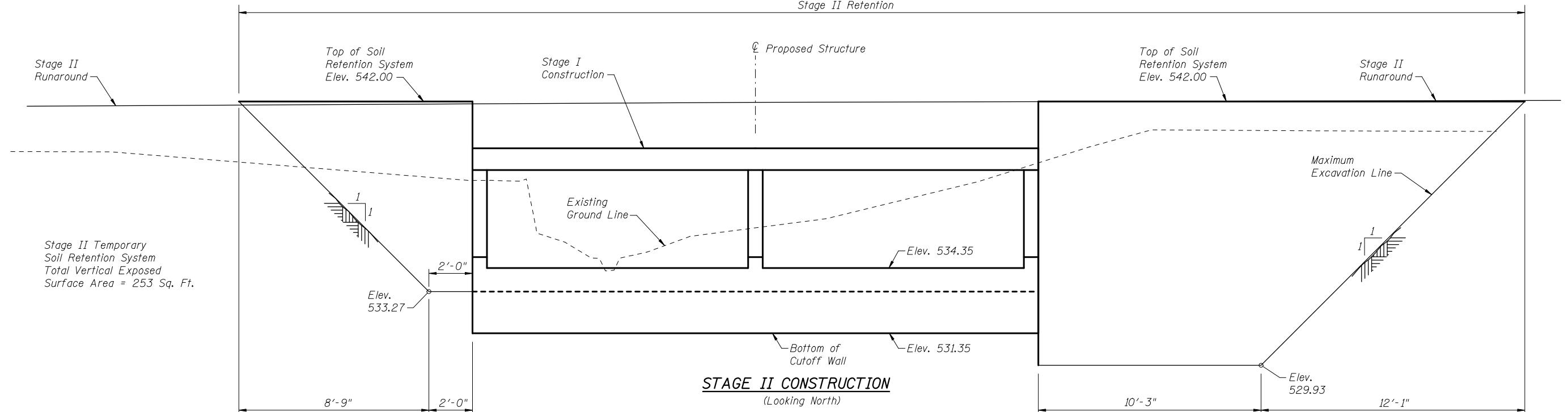


STAGE I CONSTRUCTION

(Looking South)

NOTES:

Stage II Retention



STAGE II CONSTRUCTION

(Looking North)

1. A cantilevered sheet piling design does not appear feasible and additional members or other retention systems may be necessary. The Contractor shall submit a temporary soil retention system design including plan details and calculations for review and acceptance by the Engineer.



USER NAME = *USER*	DESIGNED BLM	REVISED -
DRAWN TJR	REVISED -	
PLOT SCALE = *SCALE*	CHECKED JEK	REVISED -
PLOT DATE = *DATE*	DATE 02-04-2013	REVISED -

STATE OF ILLINOIS
DEPARTMENT OF TRANSPORTATION

TEMPORARY SOIL RETENTION SYSTEM DETAILS
STRUCTURE NO. 034-2527

SCALE: NTS SHEET 8 OF 9 SHEETS STA. 146+92.00

F.A.P. RTE.	SECTION	COUNTY	TOTAL SHEETS	SHEET NO.
685	113 (B-4)	HANCOCK	62	44
CONTRACT NO. 72B62				
ILLINOIS FED. AID PROJECT				