

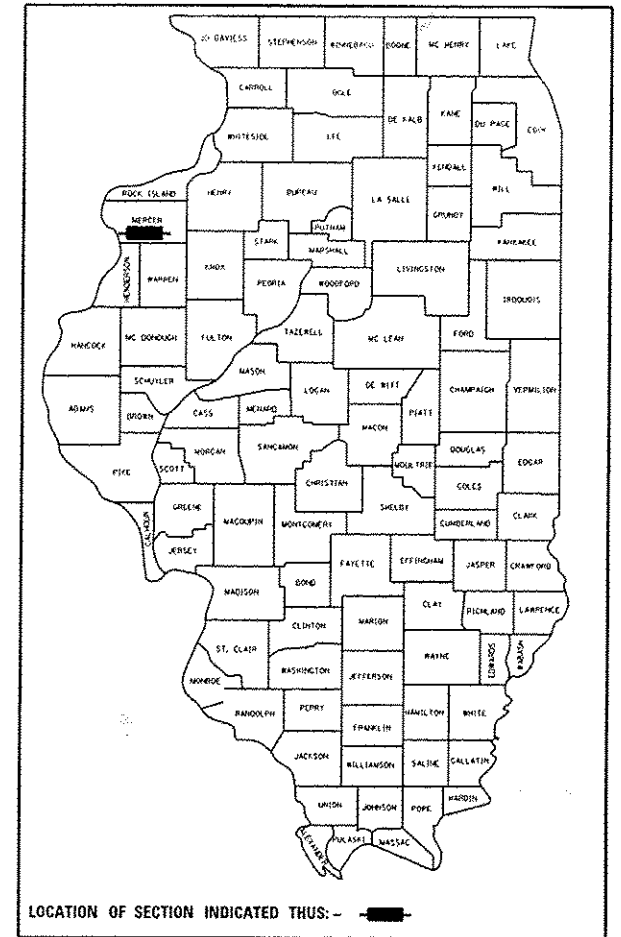
F.A.P. RTE.	SECTION	COUNTY	TOTAL SHEETS	SHEET NO.
639	(123)	Mercer	14	1

STATE OF ILLINOIS
DEPARTMENT OF TRANSPORTATION
DIVISION OF HIGHWAYS

**PROPOSED
HIGHWAY PLANS**

FAP 639(IL 17)
SECTION (123)I
MERCER COUNTY
C-94-043-11

D-94-023-11



LOCATION OF SECTION INDICATED THUS: - [black rectangle] -

DESCRIPTION OF WORK:
REPAIR HEADWALLS & BARREL ENDS OF 10' x 10' CONCRETE BOX CULVERT ON IL. 17 OVER MAD RUN CREEK, 0.9 MILES EAST OF BRYANT ROAD AND 2.5 MILES WEST OF JOY AT STA. 287 + 90

DESIGNER: KYLE WHEELWRIGHT
(309) 671-3451

PROJECT ENGINEER: TOM LACY
(309) 671-3451

INDEX OF SHEETS:

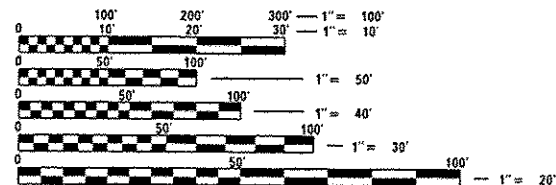
1. COVER SHEET
2. COMMITMENTS & GENERAL NOTES, JOB SPECIFIC NOTES, STATUS OF UTILITIES
3. SUMMARY OF QUANTITIES
4. CROSS SECTION
5. SCHEDULE OF QUANTITIES
6. PLAN & PROFILE
7. GENERAL LAYOUT
8. TRAFFIC CONTROL
9. EXISTING PLAN
- 10-14. PROPOSED PLAN DETAILS

STANDARDS:

- 701001-02
- 701006-04
- 701011-03
- 701201-04
- 701901-02
- 780001-03

ADT = 1850

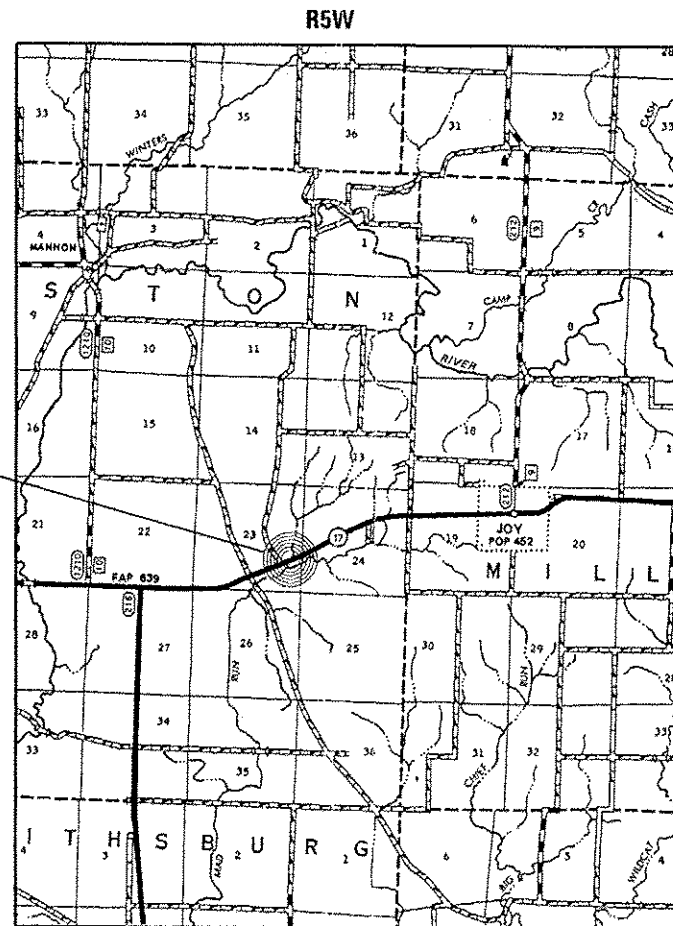
MU = 3.78% 2008



FULL SIZE PLANS HAVE BEEN PREPARED USING STANDARD ENGINEERING SCALES. REDUCED SIZED PLANS WILL NOT CONFORM TO STANDARD SCALES. IN MAKING MEASUREMENTS ON REDUCED PLANS, THE ABOVE SCALES MAY BE USED.

J.U.L.I.E.
JOINT UTILITY LOCATION INFORMATION FOR EXCAVATION
1-800-892-0123

10'x10' Concrete Box
Culvert - Sta. 287 + 90



PRINTED BY THE AUTHORITY
OF THE STATE OF ILLINOIS

STATE OF ILLINOIS
DEPARTMENT OF TRANSPORTATION
DIVISION OF HIGHWAYS

SUBMITTED Dec 19 2012
W. J. Brown
DEPUTY DIRECTOR OF HIGHWAYS, REGION ENGINEER

Feb 1 2013
John D. Baranzoli, P.E.
acting ENGINEER OF DESIGN AND ENVIRONMENT

Feb 1 2013
Chris Osman, P.E.
DIRECTOR OF HIGHWAYS, CHIEF ENGINEER