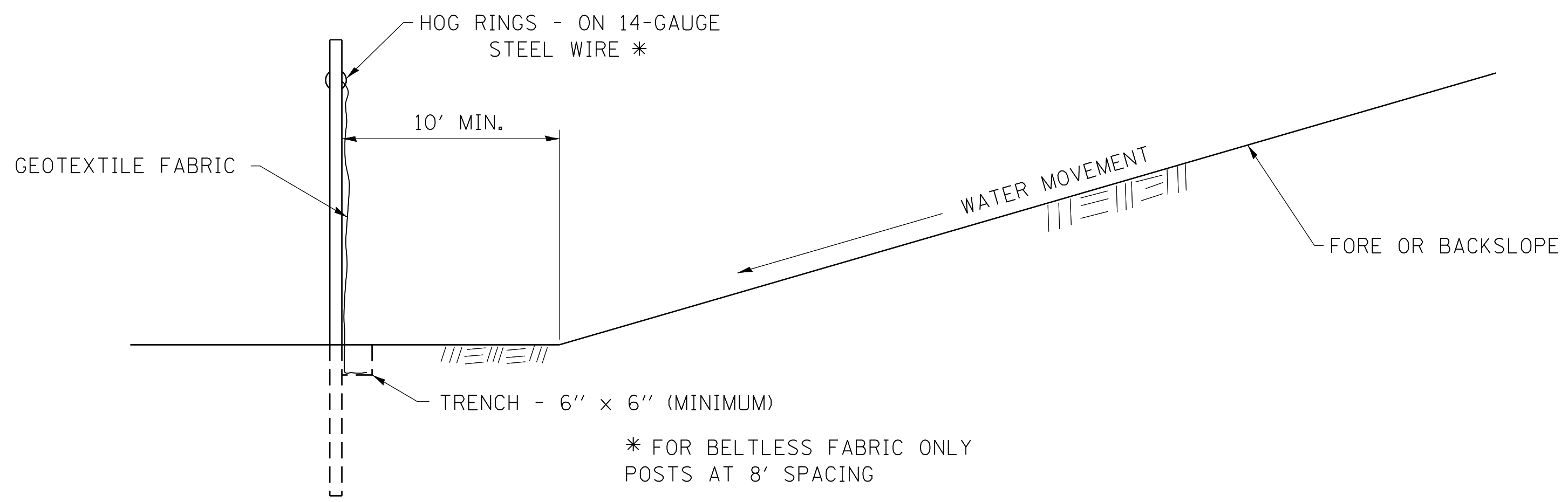
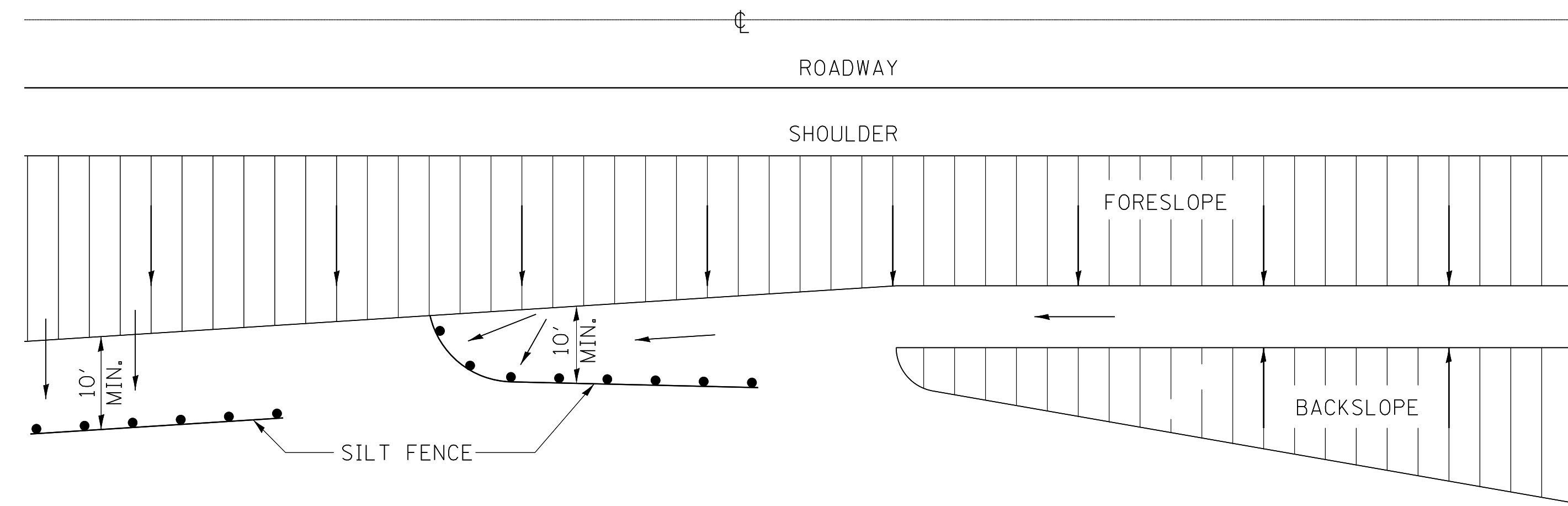


PLAN	SURVEYED	BY	DATE
	PLOTTED		
	CHECKED		
	ALLOTTED		
	FILED		
	NO.		
	NO.		
	NO.		
	NO.		

PROFILE	SURVEYED	BY	DATE
	PLOTTED		
	CHECKED		
	ALLOTTED		
	FILED		
	NO.		
	NO.		
	NO.		
	NO.		

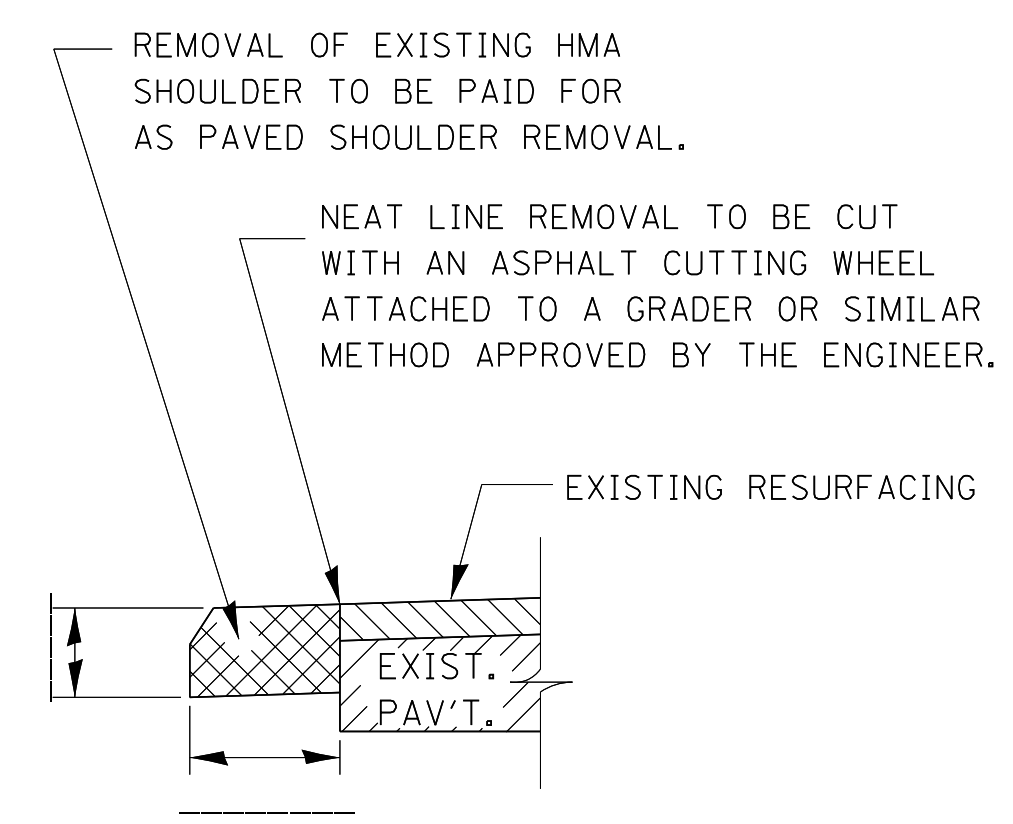
FILE NAME = c:\pwwork\pwwork\duncanbd\dm66809\036944.sht.dwt.dgn



DETAILS OF SILT FENCE

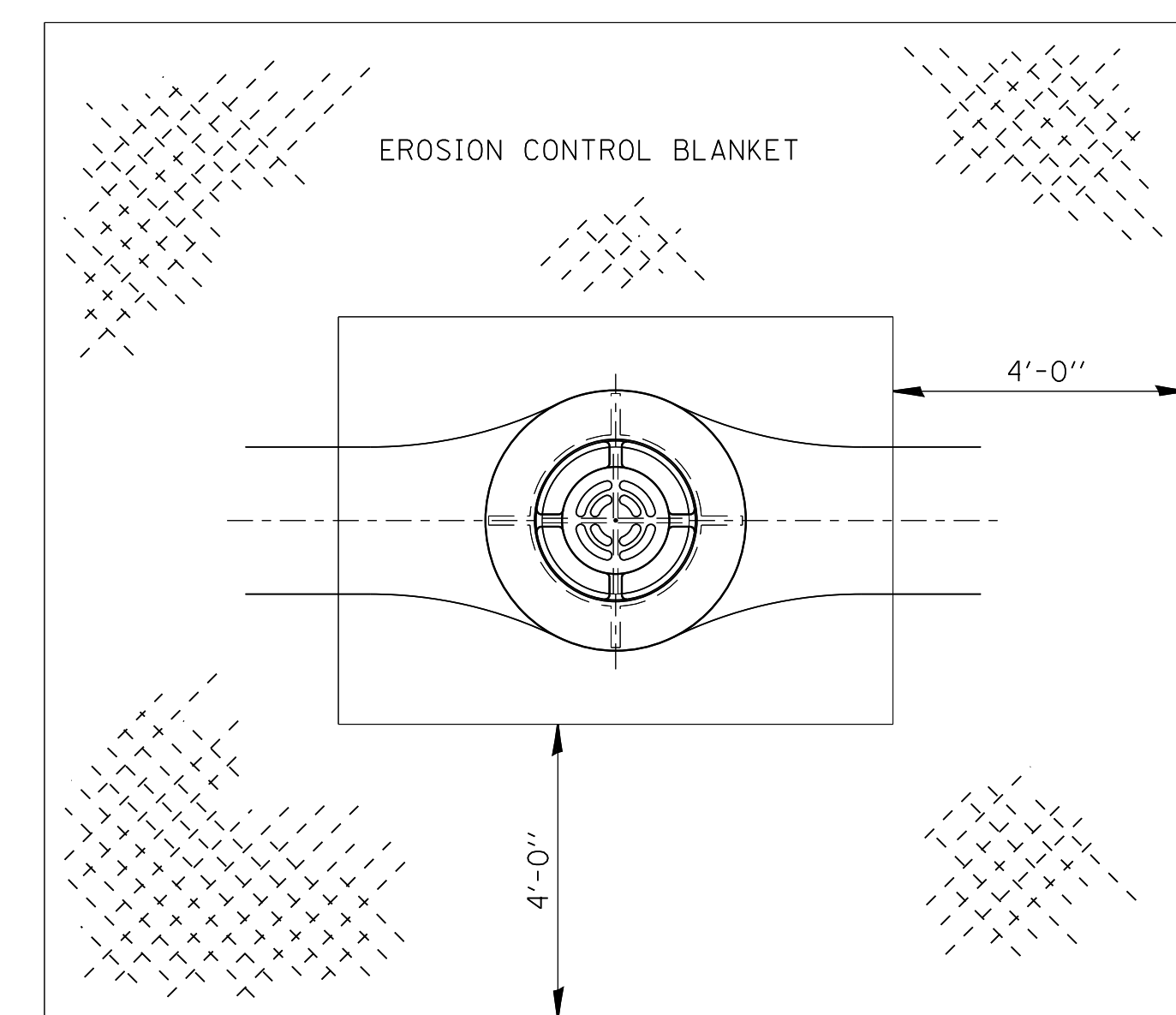
EROSION CONTROL DETAILS FOR SILT FENCE

280-1



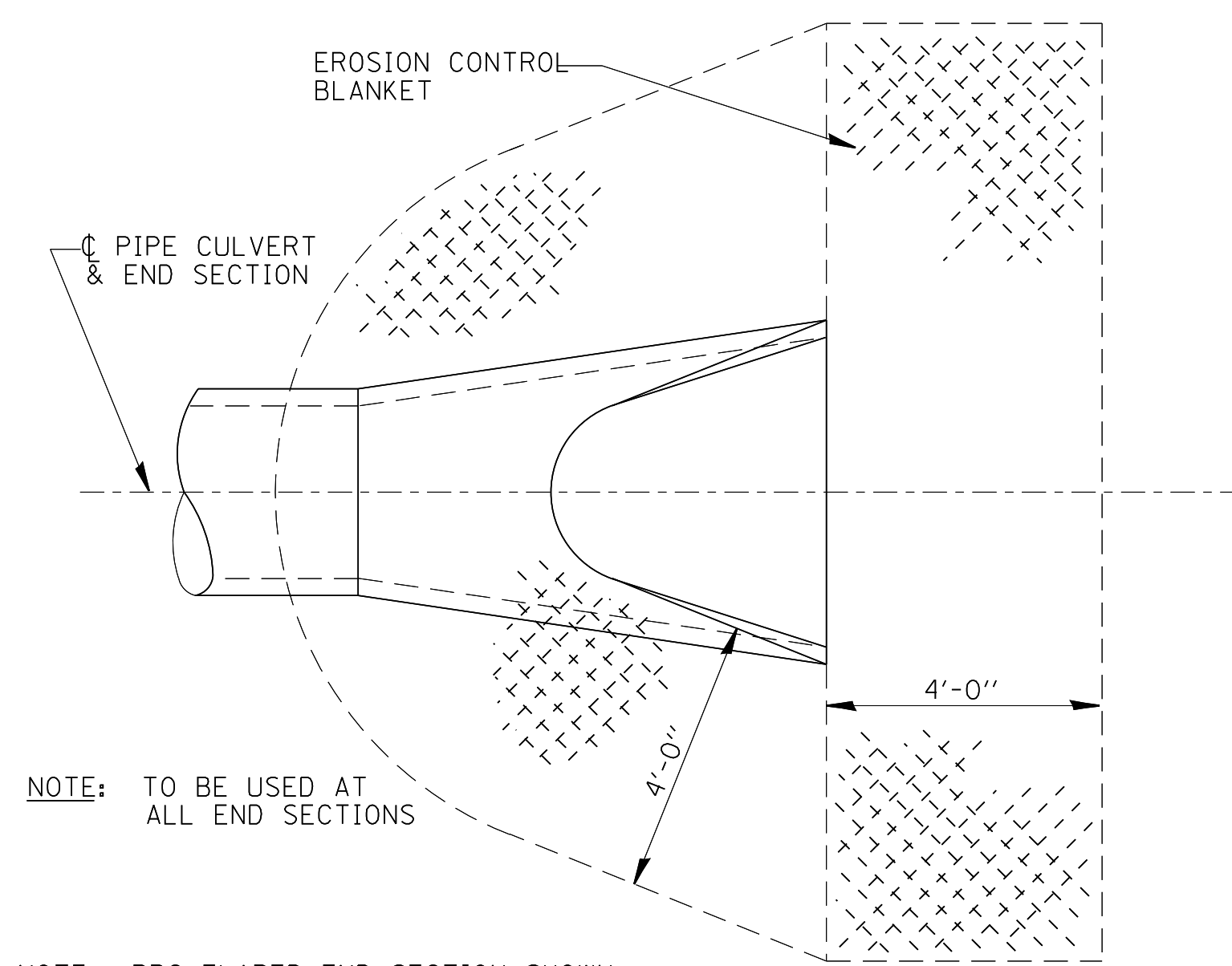
REMOVAL OF EXISTING HMA SHOULDER

440-1



EROSION CONTROL BLANKET AT MEDIAN INLET STD. 604101 OR STD. 640106

251-1



NOTE: TO BE USED AT ALL END SECTIONS

NOTE: PRC FLARED END SECTION SHOWN. TREATMENT SAME FOR OTHER END SECTIONS.

DETAIL OF EROSION CONTROL BLANKET LINING AROUND END SECTION

251-2



USER NAME = duncanbd	DESIGNED BAH	REVISED
	DRAWN BAH	REVISED
PLOT SCALE = 1.00' / in.	CHECKED KAC	REVISED
PLOT DATE = 12/10/2012	DATE 12/07/2012	REVISED

STATE OF ILLINOIS
DEPARTMENT OF TRANSPORTATION

INTERSTATE 57 OVER LANGAN CREEK DETAILS	
SCALE:	SHEET 4 OF 8 SHEETS STA. TO STA.

F.A.I. RTE.	SECTION	COUNTY	TOTAL SHEETS	SHEET NO.
57	141 BR(SB) & 38-1 BR(NB)	IROQUOIS	138	100
CONTRACT NO. 66944				
ILLINOIS FED. AID PROJECT				