

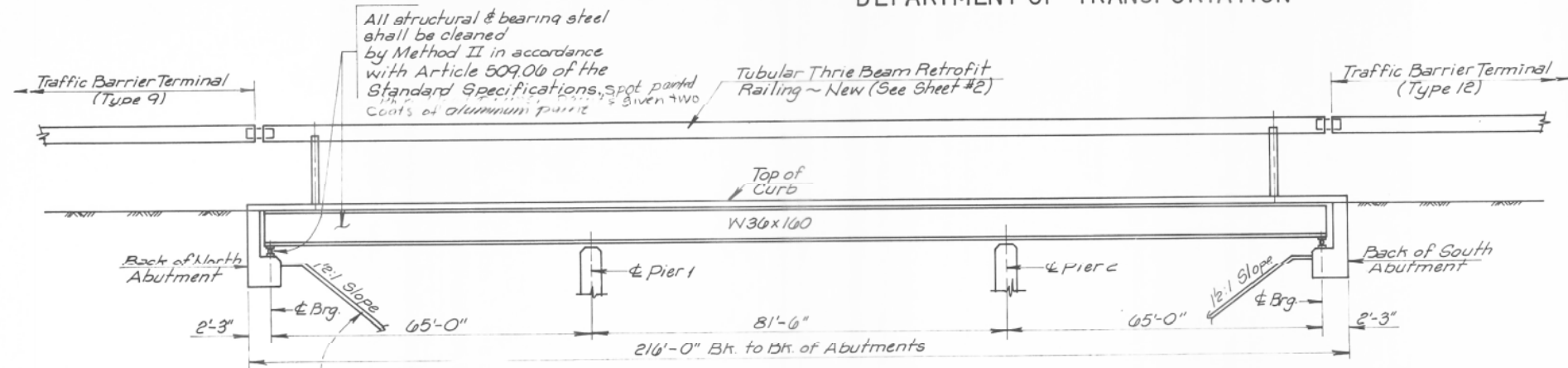
STATE OF ILLINOIS  
DEPARTMENT OF TRANSPORTATION

FAI 57	Kankakee Iroquois	22	20
--------	-------------------	----	----

Sheet No. 1  
of 3 Sheets.

GENERAL NOTES

- Plan dimensions and details relative to existing structure have been taken from existing plans and are subject to nominal construction variations. It shall be the Contractor's responsibility to verify such dimensions and details in the field and make necessary approved adjustments prior to construction or ordering of materials. Such variations shall not be cause for additional compensation for a change in the scope of the work; however, the Contractor will be paid for the quantity actually furnished at the unit price bid for the work.
- Construction shall be done in stages. See Cross Section.
- See roadway plan Sht. No. 6 for Guardrail Schedule.
- See roadway plan Sht. No. 16 for Bit. Thickness Taper detail & Sht. No. 2 for Proposed Typical Section.
- Preformed Expansion Joint Fillers and Poured Joint Sealers shall conform to sections 715 & 710 respectively of the Standard Specifications. Asphalt Fillers shall conform to Article 713.08 of the Standard Specifications.
- For Expansion Joint Rehabilitation Type I, See Special Provisions.

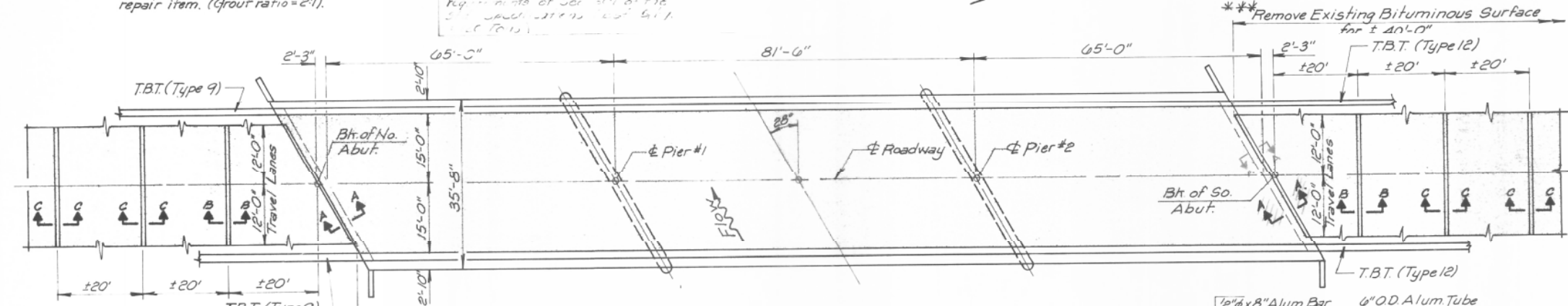


ELEVATION

\*Cost incidental to Slope Wall repair item. (Grout ratio = 2:1).

Failing Portions North & South Slope Walls to be broken into 12" pieces of Rip-Rap, 1/2" to 2 1/2" in size, resting the rip-rap on top of the 3" concrete base. (See Sht. 17 of 19)

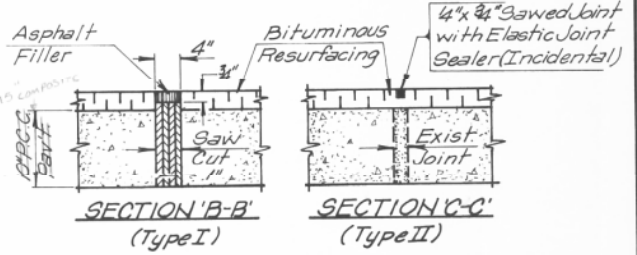
Note: Any repair to the tubguards and Sidewalks to be field determined by the Engineer and paid for as Deck Slab Repair.



PLAN

\*\* Remove Existing Bituminous Surface for 140'-0"

\*\*\* Quantities are included in the roadway plans.



EXPANSION JOINT REHABILITATION

TOTAL BILL OF MATERIAL

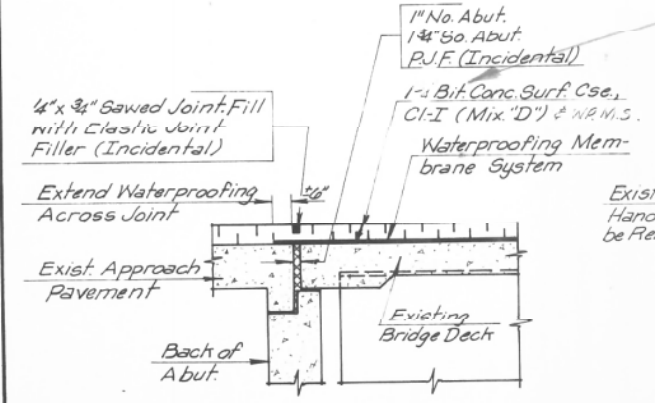
Code No.	Item	Unit	Quantity
406013	Bituminous Conc. Surf. Cse. CI-I Mix. "D"	Ton	61
501041	Bridge Handrail Removal	Lin. Ft.	432 *
302001	Floor Drains	Each	42
501028	Anchor Bolts 1/2" φ	Each	84
509003	Clean & Paint Steel Bridge	L. Sum	1 **
	Bituminous Concrete Removal (Deck) ①	Sq. Yd.	720
406023	Traffic Control & Protection Std. 2310	Each	1
Z10181	Deck Slab Repair (Partial Depth)	Sq. Yd.	30
Z10530	Waterproofing Membrane System	Sq. Yd.	724
X52803	Tub Thrie Beam Retro Rail for Bridges	Lin. Ft.	432
X02841	Traffic Barrier Terminal Type 9	Each	2
X02880	Traffic Barrier Terminal Type 12	Each	2
XZ1328	Expansion Joint Rehabilitation Type I	Lin. Ft.	48
	Slope Wall Repair	Sq. Yd.	250
	Uncomp. Equip.	Item	120

\* See Special Provisions.  
\*\* 132 Tons of Structural Steel to be painted.  
① 3/4" (PARTIAL DEPTH)

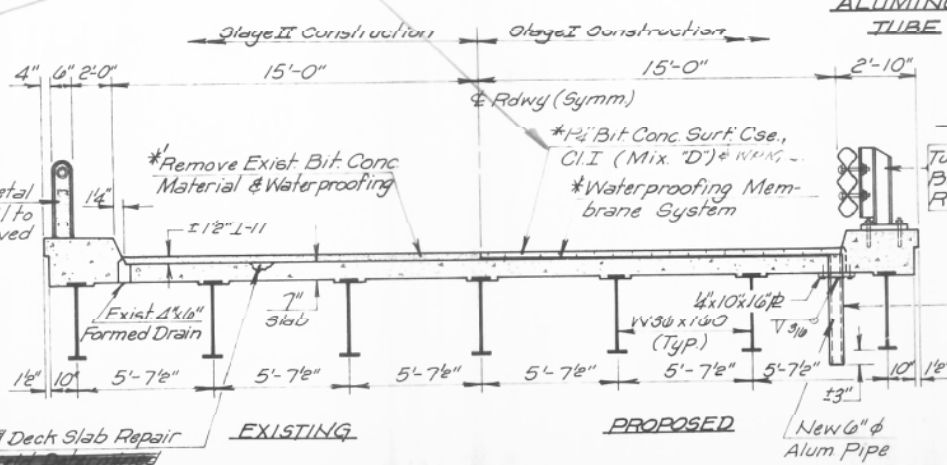
BRIDGE REHABILITATION

FAI ROUTE 77 Over Langan Creek  
SECTION 141-B-I (Rdwy. Sec. 40, 38-1)  
STA. 843+70  
IROQUOIS COUNTY

BRIDGE OPEN NO. 039-0015

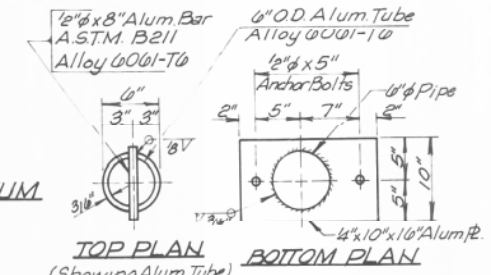


SECTION "A-A"  
TREATMENT @ ABUTMENTS



CROSS SECTION

\* Removal and Replacement shall be full length of Bridge.



FLOOR DRAIN DETAIL

No. Req'd = 42 (to be placed at the same locations as the exist. drains)

FLOOR DRAIN TREATMENT

- Drill 6/8" φ holes inside the exist 4"x6" Formed Drains.
- Insert 6" φ x 13'-10" Aluminum Pipes into the holes.
- 4"x10"x1/4" Plates to be anchored to the concrete and welded to the New Pipes.

By: A. K. El-bech



DESIGNED	REVISOR
CHECKED	REVISOR
DRAWN	REVISOR
CHECKED	REVISOR

STATE OF ILLINOIS  
DEPARTMENT OF TRANSPORTATION

EXISTING STRUCTURE PLANS  
STRUCTURE NO. 038-0215 (S.B.)

SHEET NO. 17 OF 19 SHEETS

FOR INFORMATION ONLY

F.A.I. RTE.	SECTION	COUNTY	TOTAL SHEETS	SHEET NO.
57	141 BR(SB) & 38-1 BR(NB)	IROQUOIS	138	93
				CONTRACT NO. 66944

ILLINOIS FED. AID PROJECT

12/7/2012 4:53:45 AM 0380215\_66944\_001.EX17.dgn