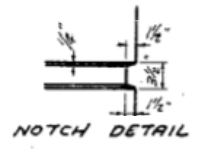
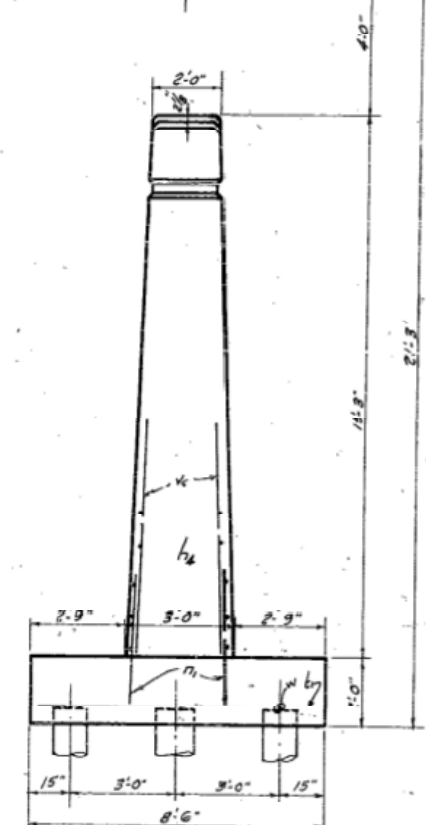


STATE OF ILLINOIS
DEPARTMENT OF PUBLIC WORKS & BUILDINGS
DIVISION OF HIGHWAYS

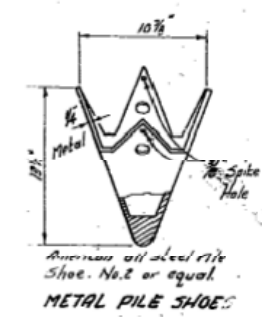
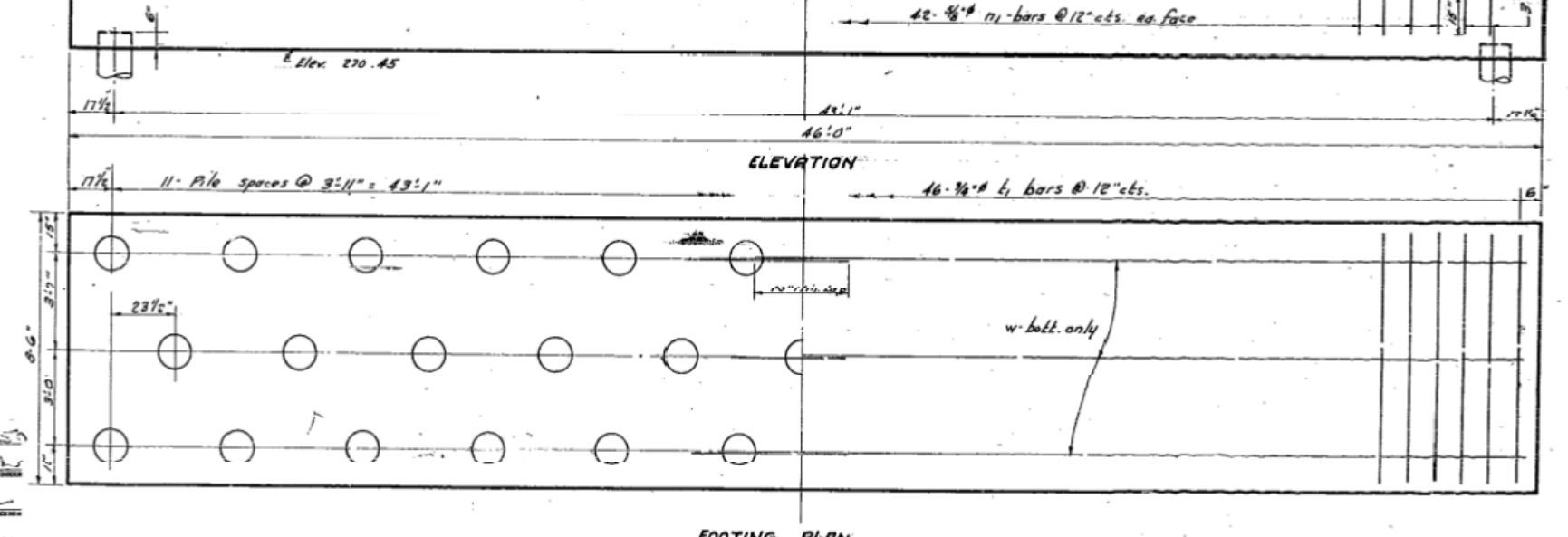
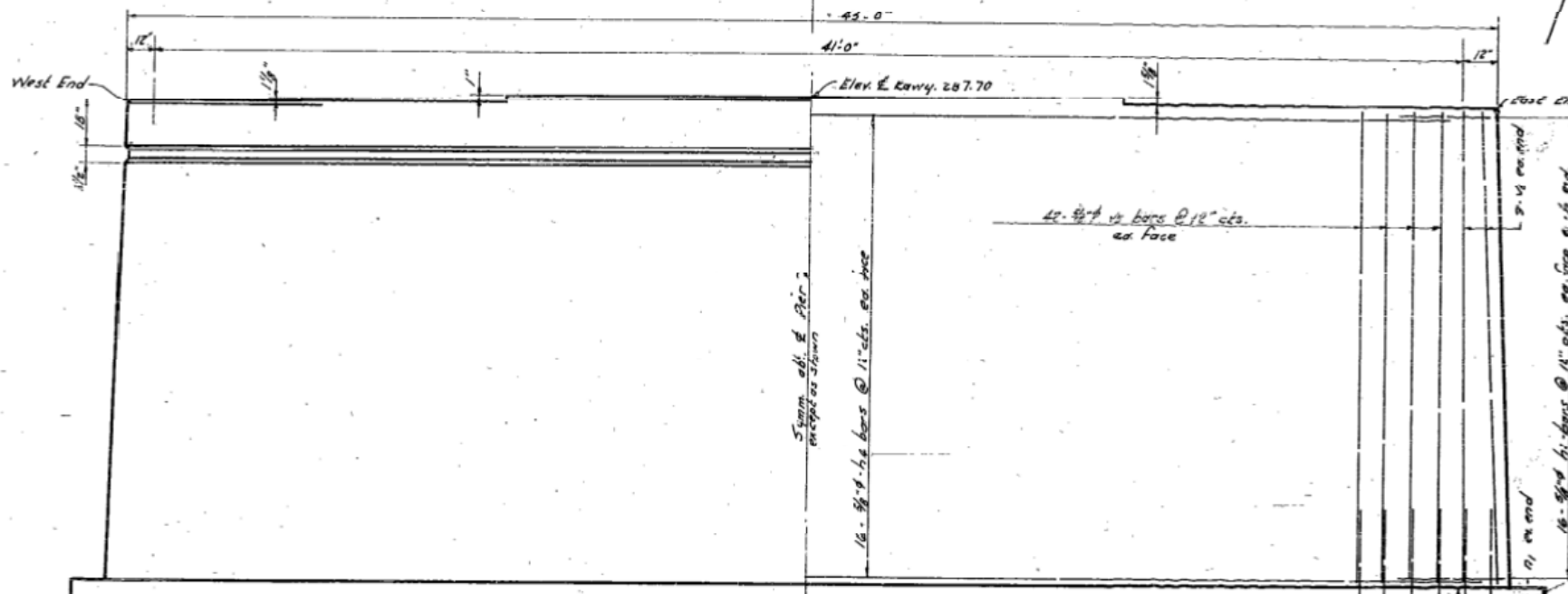
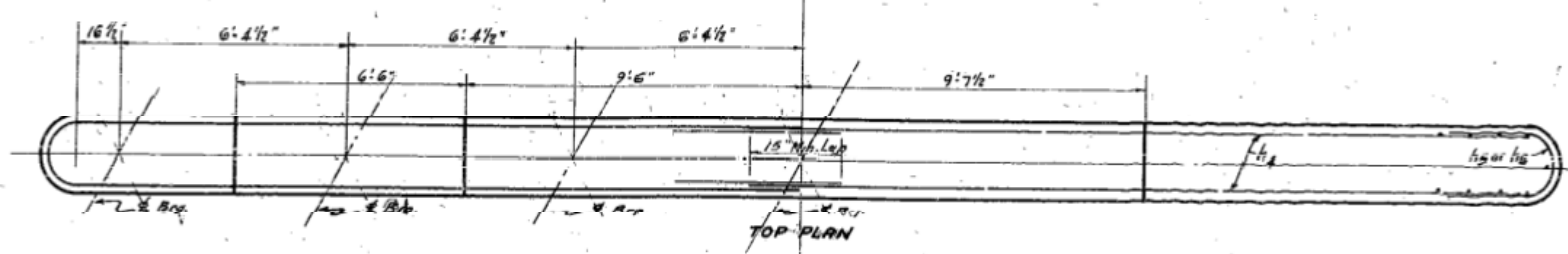
WORK SHEET NO.	SECTION	COUNTY	TOTAL SHEETS	SHEET NO.
76	141B	Iroquois	13	8
SHEET NO. 7		8 SHEETS		



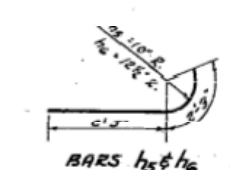
See #1
Sta. 8+43.4425
Cr. El. 297.70



END ELEVATION
PILE DATA
18 Ton Capacity
Est. Length 20'-0"



Anchor all steel pile shoe. No. 2 or equal.
METAL PILE SHOE



BILL OF MATERIAL - PIER #1

QTY	No.	SIZE	LENGTH	SHAPE
98	90	3/4"	16.9'	
91	90	3/4"	4.6'	
92	92	3/4"	8.0'	
W	G	3/4"	23.0'	
h4	G4	3/4"	21.0'	
h5	32	3/4"	4.6'	
h6	32	3/4"	4.6'	

Class X Concrete Cu.Yds. 89.0
Reinforcement Bars Lbs. 4710
Unbr. Timber Piles (20') Lin. Ft. 680
Unbr. Timber Test Piles Ea. 1

DESIGNED *Carroll Taylor*
CHECKED *Harry R. Baker*
DRAWN *P.C.T. Smece*
CHECKED *M.P.*

EXAMINED *W. J. Baker*
PASSED *W. J. Baker*
APPROVED *C.M. Hathaway*

Note direction of steel corrected in TOP PLAN 2/28/51

PIER #1
LANGAN CREEK BRIDGE
PROJ. I.I.-29(1)
IROQUOIS COUNTY
STA. 843+70(1)

FOR INFORMATION ONLY

12/7/2012 4:53:03 AM 0380215_66944_001_EX15.dgn



DESIGNED	REVISOR	
CHECKED	REVISOR	
DRAWN	REVISOR	
CHECKED	REVISOR	
DESIGNED	REVISOR	
CHECKED	REVISOR	
DRAWN	REVISOR	
CHECKED	REVISOR	

STATE OF ILLINOIS
DEPARTMENT OF TRANSPORTATION

EXISTING STRUCTURE PLANS
STRUCTURE NO. 038-0215 (S.B.)

SHEET NO. 15 OF 19 SHEETS

F.A.I. RTE.	SECTION	COUNTY	TOTAL SHEETS	SHEET NO.
57	141 BR(SB) & 38-1 BR(NB)	IROQUOIS	138	91
CONTRACT NO. 66944			ILLINOIS FED. AID PROJECT	