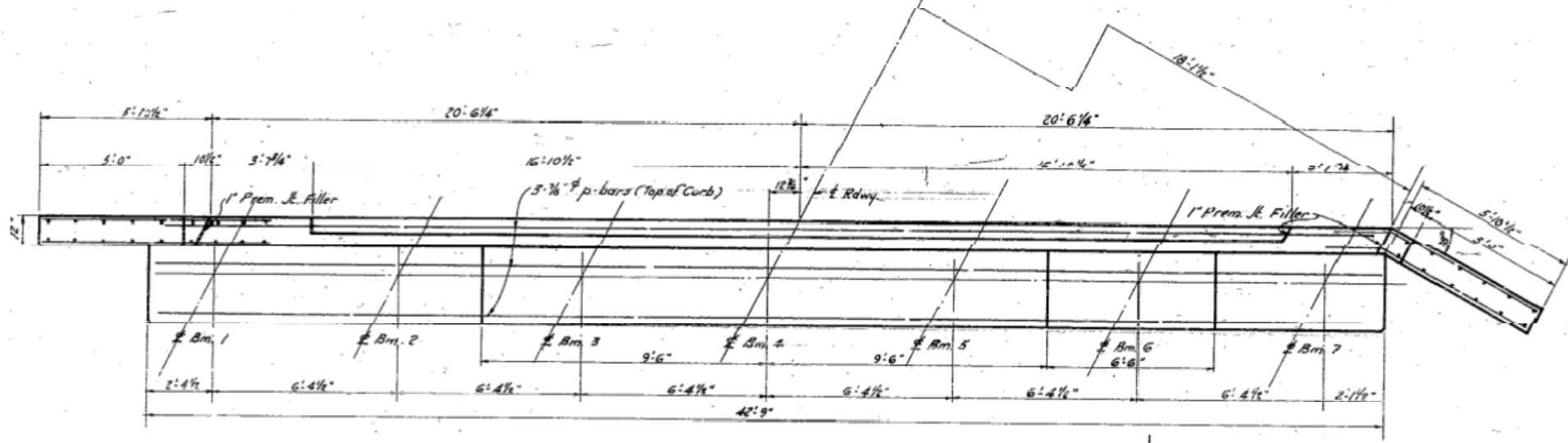


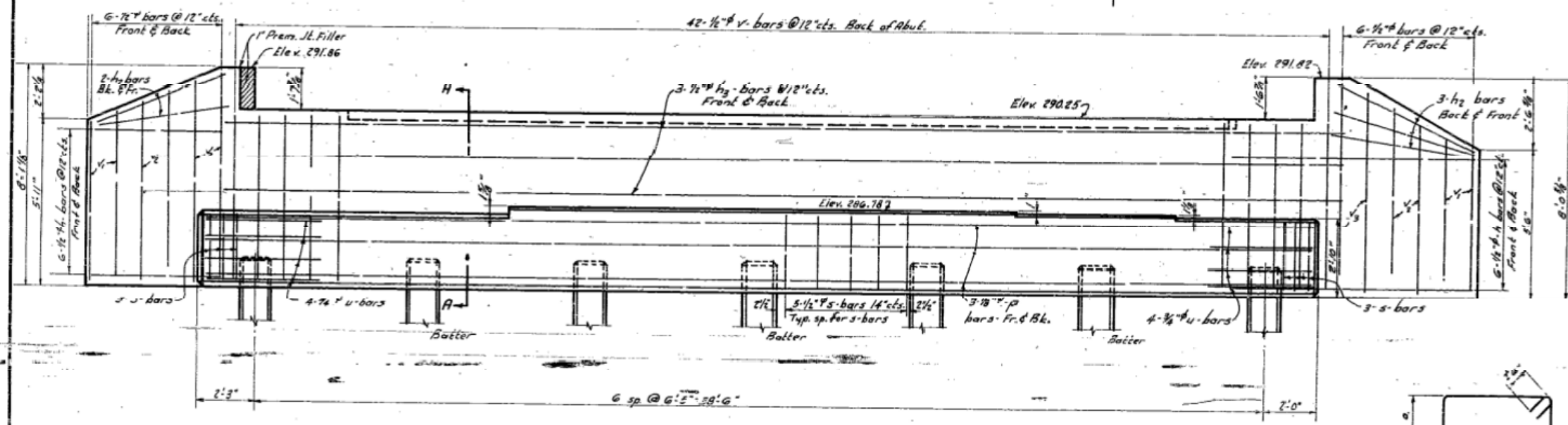
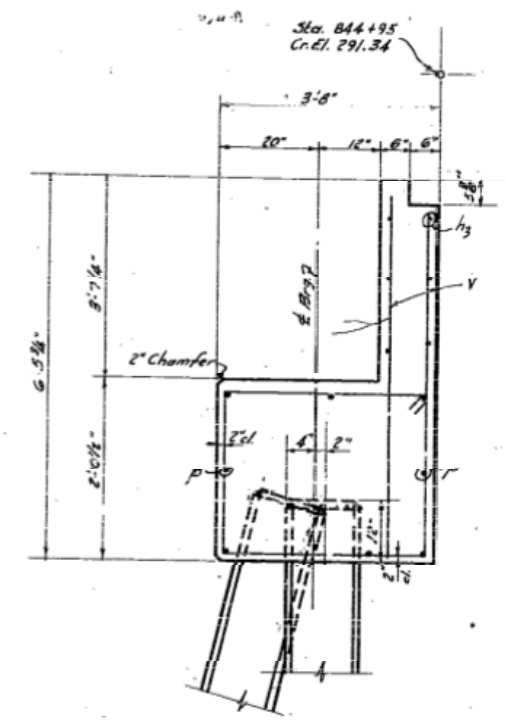
STATE OF ILLINOIS
DEPARTMENT OF PUBLIC WORKS & BUILDINGS
DIVISION OF HIGHWAYS

PROJECT NO.	SECTION	SHEET NO.	TOTAL SHEETS
26	141B	7	8

SHEET NO. 6
8 SHEETS



For Detail of Precast Concrete
File See Sh. # 6



BILL OF MATERIAL - SO. ABUT.

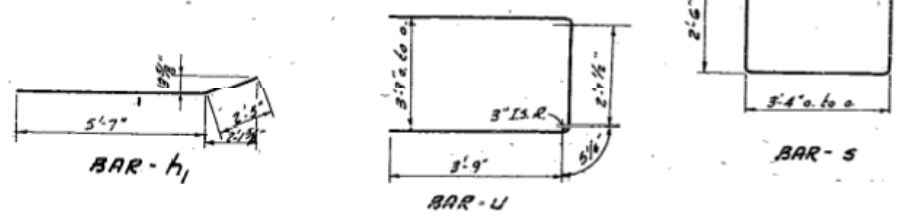
Bar	No	Size	Length	Shape
v	84	1/4"	516"	
v1	0	7/8"	0-0"	
v2	8	1/2"	6'-0"	
v3	8	1/2"	7'-0"	
h	12	1/2"	21'-0"	
h1	12	1/2"	21'-0"	
h2	10	1/2"	5'-0"	
h3	12	1/2"	21'-0"	
a	16	1/2"	22'-0"	
s	36	1/2"	12'-0"	
u	8	3/4"	11'-0"	

Class X Concrete Cu Yds. 24.6
Reinforcement Bars Lbs. 1910
Precast Conc. Piles (85') Lbs. 210

DESIGNED *Conrad & Thyle*
CHECKED *Harry R. ...*
DRAWN *C.C.T. ...*
CHECKED *M.P.E.*

DATE 10-23-1950
PASSED *[Signature]*
APPROVED *[Signature]*

PILE DATA
Type - 16" Precast Concrete
Est. Length 35'-0"
Min. Capacity 30 Tons
No. Req'd. 7



SO. ABUT.
LANGRAN CREEK BRIDGE
PROJ. 151-29070
P.A.R. 12, 13 (CONTRACT) SEC. 141-B
IROQUOIS COUNTY
CONTRACT NO. 66944

FOR INFORMATION ONLY

4453801 AM 0380215.66944_001.EX14.dgn 12/7/2012



DESIGNED	REVISOR
CHECKED	REVISOR
DRAWN	REVISOR
CHECKED	REVISOR

STATE OF ILLINOIS
DEPARTMENT OF TRANSPORTATION

EXISTING STRUCTURE PLANS
STRUCTURE NO. 038-0215 (S.B.)

SHEET NO. 14 OF 19 SHEETS

F.A.I. RTE.	SECTION	COUNTY	TOTAL SHEETS	SHEET NO.
57	141 BR(SB) & 38-1 BR(NB)	IROQUOIS	138	90

CONTRACT NO. 66944
ILLINOIS FED. AID PROJECT