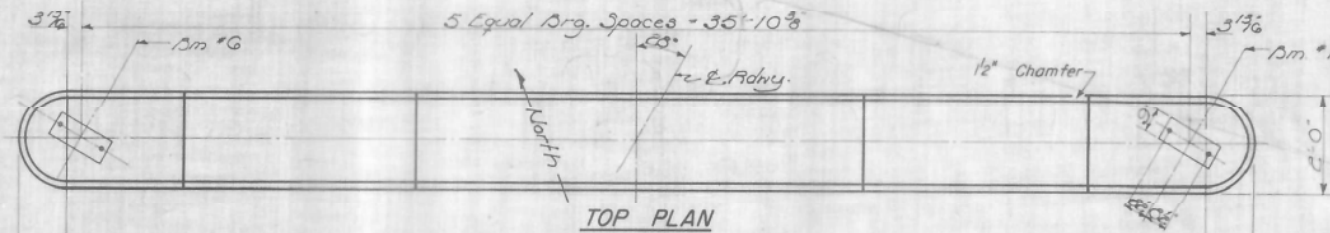


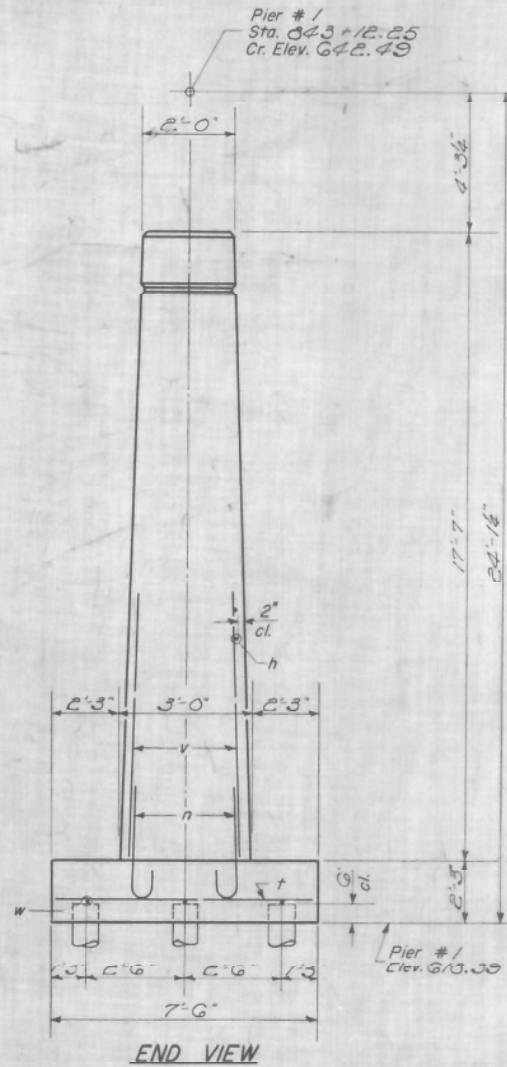
STATE OF ILLINOIS
DEPARTMENT OF PUBLIC WORKS & BUILDINGS
DIVISION OF HIGHWAYS

PROJECT NO.	46381	Kankakee	SECTION	19A	SHEET	5B	SHEET NO. 5
STA.	843+12.25	Iroquois	DATE	194	NO.	58	10 SHEETS
FED. ROAD DIST. NO.	7	ILLINOIS	FED. AID PROJECT				

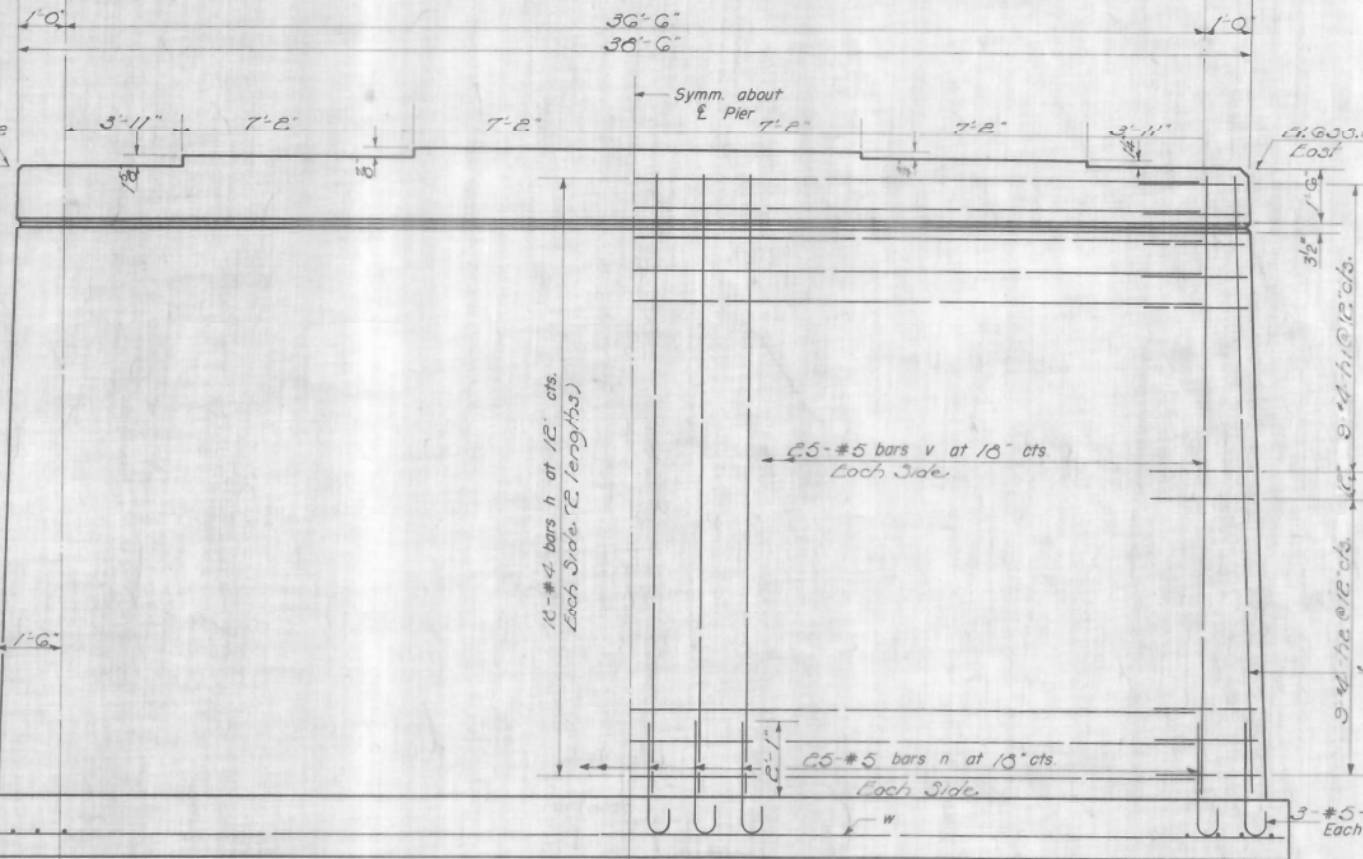
PILE DATA
Type *Untreated*
Capacity *20 Tons*
Est. Length *16 Ft.* ORDERED *25'*
No. Req'd. *29*



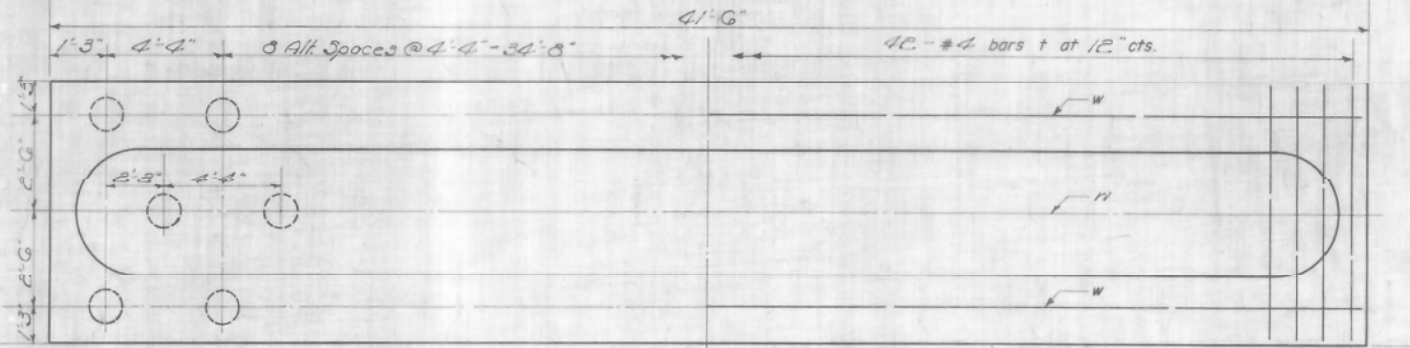
TOP PLAN



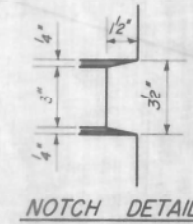
END VIEW



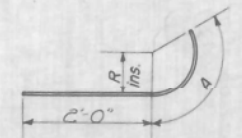
ELEVATION



FOOTING PLAN

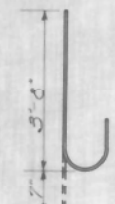


NOTCH DETAIL



Bar	R	A
h1	11"	2'-0"
h2	1'-2"	2'-6"

DETAIL OF BARS



BAR n

For Detail of Metal Shoe See Sheet 6.

BILL OF MATERIAL

Bar	No.	Size	Length	Shape
h	72	#4	10'-9"	—
h1	36	#4	4'-0"	—
h2	36	#4	4'-6"	—
n	56	#6	4'-3"	C
t	42	#4	7'-3"	—
v	56	#5	17'-0"	—
w	6	#4	21'-0"	—
Class A Concrete Cu. Yds. 88.6				
Reinforcement Bars Lbs. 2630				
untreated Piles Lin. Ft. 20.0				
Metal Shoes Ea. 29				

DESIGNED *Walter Perry* EXAMINED *H.G. Baumann*
CHECKED *Morris E. Janada* PASSED *E. E. ...*
DRAWN *W.A. Sausman*
CHECKED *Morris E. Janada* APPROVED *R.H. ...*

P-1 Re-drawn 7-21-59 Rev. 11-25-59

PIER 1
F.A.I. RT. 57-SEC. 38-1B
IROQUOIS COUNTY
STA. 843+70(2)

FOR INFORMATION ONLY



DESIGNED	REVISOR
CHECKED	REVISOR
DRAWN	REVISOR
CHECKED	REVISOR

STATE OF ILLINOIS
DEPARTMENT OF TRANSPORTATION

EXISTING STRUCTURE PLANS
STRUCTURE NO. 038-0216 (N.B.)

F.A.I. RTE.	SECTION	COUNTY	TOTAL SHEETS	SHEET NO.
57	141 BR(SB) & 38-1 BR(NB)	IROQUOIS	138	81
CONTRACT NO. 66944				

SHEET NO. 5 OF 19 SHEETS

ILLINOIS FED. AID PROJECT