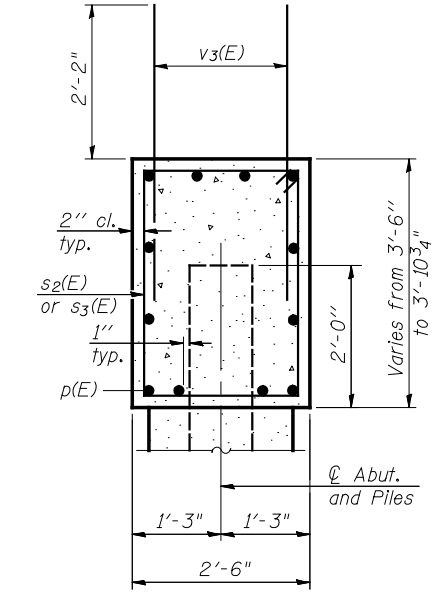
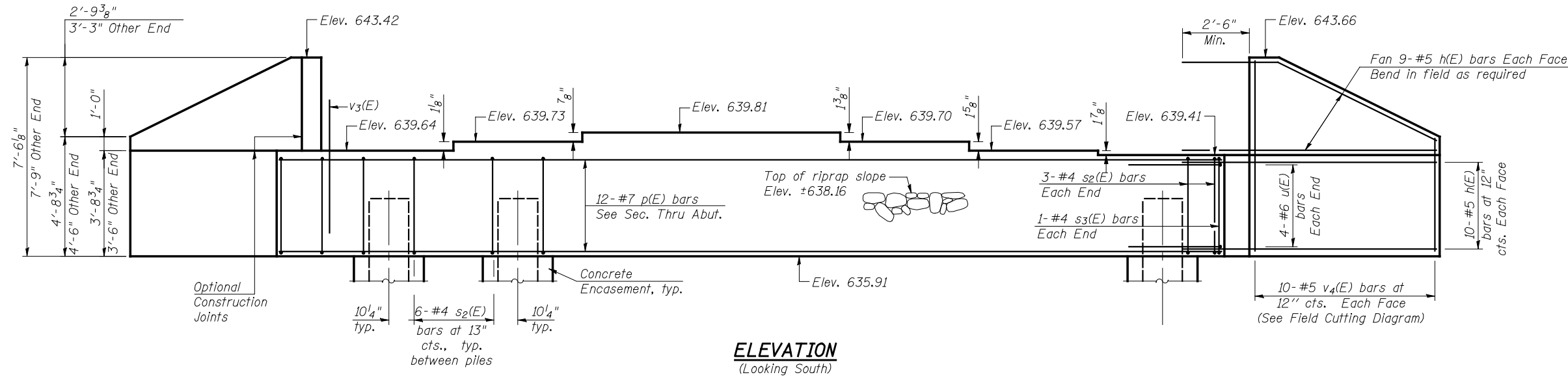


Notes:
 Pour steps monolithically with cap.
 Space reinforcement in cap to miss anchor bolts.

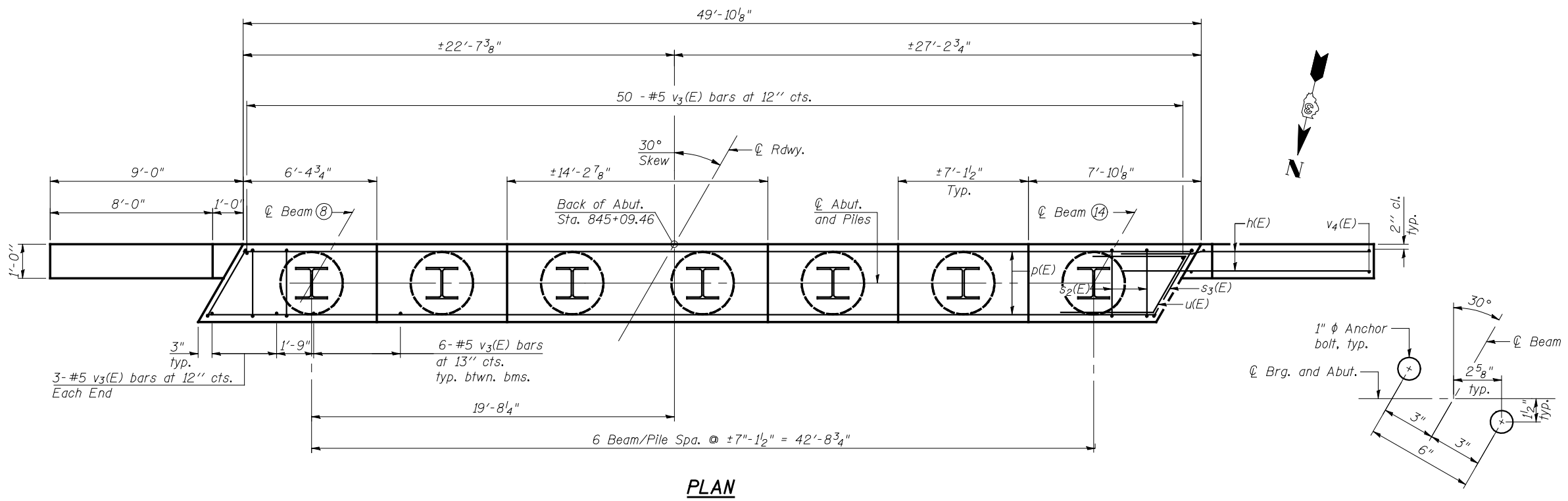


SEC. THRU ABUT.

BILL OF MATERIAL

| Bar | No. | Size | Length | Shape |
|----------------------------------|-----|------|---------|-------|
| h(E) | 76 | #5 | 12'-6" | — |
| p(E) | 12 | #7 | 49'-6" | — |
| s2(E) | 42 | #4 | 11'-5" | □ |
| s3(E) | 2 | #4 | 12'-1" | □ |
| u(E) | 8 | #6 | 8'-5" | ∟ |
| v3(E) | 92 | #5 | 4'-4" | — |
| v4(E) | 40 | #5 | 11'-4" | — |
| Structure Excavation | | | Cu. Yd. | 123.0 |
| Granular Backfill for Structures | | | Cu. Yd. | 70.0 |
| Concrete Structures | | | Cu. Yd. | 21.6 |
| Reinforcement Bars, Epoxy Coated | | | Pound | 3,530 |
| Furnishing Steel Piles HP12x74 | | | Foot | 396 |
| Driving Piles | | | Foot | 396 |
| Test Pile Steel HP12x74 | | | Each | 1 |
| Concrete Encasement | | | Cu. Yd. | 2.4 |

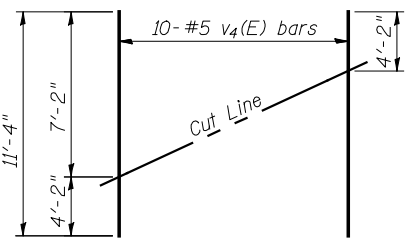
For details of piles and Concrete Encasement, see sheet 31 of 38.



PLAN

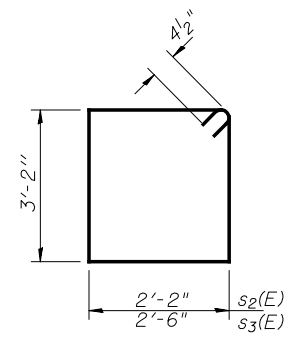
PILE DATA

Type: HP 12x74
 Nominal Required Bearing: 335 k
 Factored Resistance Available: 184 k
 Est. Length: 66 ft
 No. Production Piles: 6
 No. Test Piles: 1

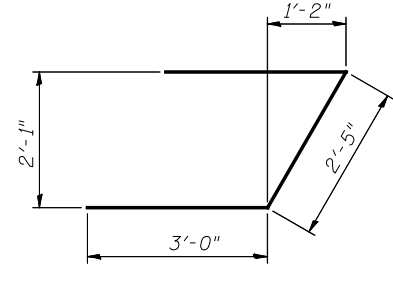


FIELD CUTTING DIAGRAM

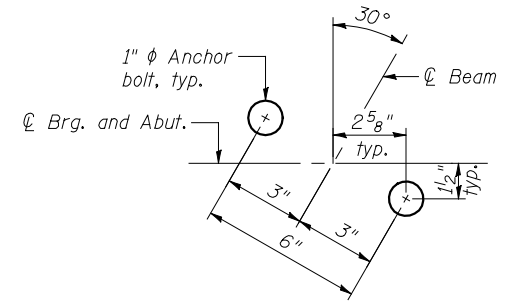
Order v4(E) full length. Cut as shown and use remainder of bars in opposite face.



BARS s2(E) & s3(E)



BAR u(E)



ANCHOR BOLT LOCATION DETAIL

1/28/2013 4:46:13 PM 0380215.66944.026.ABUT_04.dgn



| | | | |
|----------|-----|----------|--|
| DESIGNED | MAS | REVISION | |
| CHECKED | MWS | REVISION | |
| DRAWN | MWS | REVISION | |
| CHECKED | BJM | REVISION | |

STATE OF ILLINOIS
 DEPARTMENT OF TRANSPORTATION

SOUTH ABUTMENT
 STRUCTURE NO. 038-0215 (S.B.)

SHEET NO. 26 OF 38 SHEETS

| | | | | |
|---------------------------|--------------------------|----------|--------------|-----------|
| F.A.I. RTE. | SECTION | COUNTY | TOTAL SHEETS | SHEET NO. |
| 57 | 141 BR(SB) & 38-1 BR(NB) | IROQUOIS | 138 | 64 |
| CONTRACT NO. 66944 | | | | |
| ILLINOIS FED. AID PROJECT | | | | |