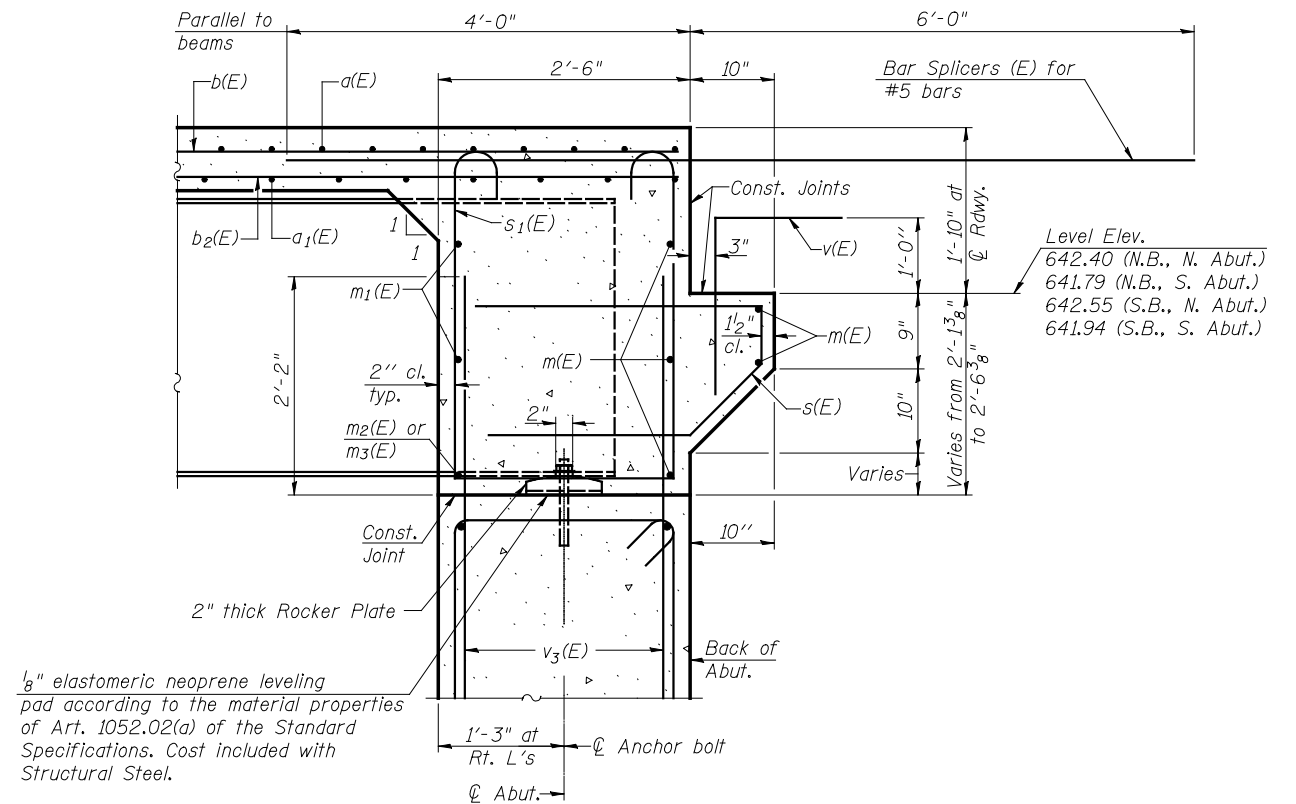


DIAPHRAGM ELEVATION AT ABUTMENT

Notes:
 Reinforcement bars in diaphragm are billed with superstructure on sheet 16 of 38.
 Concrete in diaphragm is included with Concrete Superstructure on sheet 16 of 38.
 For details of bars s(E) & s1(E) see sheet 16 of 38.
 The s(E) and s1(E) bars shall be placed parallel to the beams. Spacing for these bars shall be at right angles to the beams.

MIN. BAR LAP
 #6 bar = 3'-10"



SECTION A-A

Dimensions at right angles to abutment, except as shown.

1/28/2013 4:46:04 PM 0380215_66944_017_DIA_01.dgn



DESIGNED	TAY	REVISED	
CHECKED	MWS	REVISED	
DRAWN	MWS	REVISED	
CHECKED	BJM	REVISED	

STATE OF ILLINOIS
DEPARTMENT OF TRANSPORTATION

DIAPHRAGM DETAILS
STRUCTURE NO. 038-0215 (S.B.) & 038-0216 (N.B.)

SHEET NO. 17 OF 38 SHEETS

F.A.I. RTE.	SECTION	COUNTY	TOTAL SHEETS	SHEET NO.
57	141 BR(SB) & 38-1 BR(NB)	IROQUOIS	138	55
CONTRACT NO. 66944				
ILLINOIS FED. AID PROJECT				