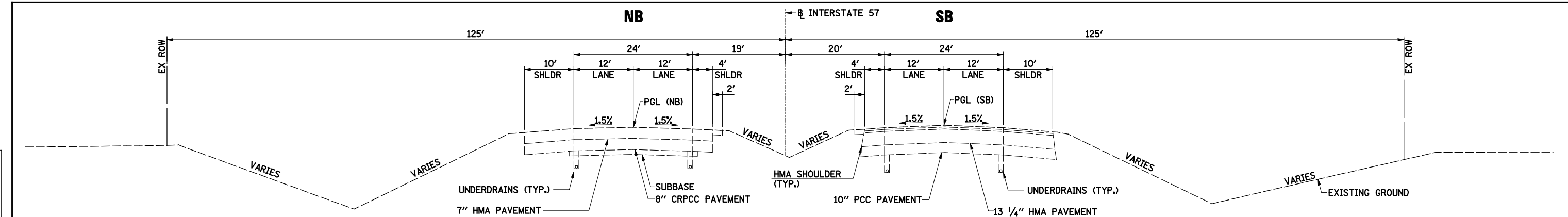
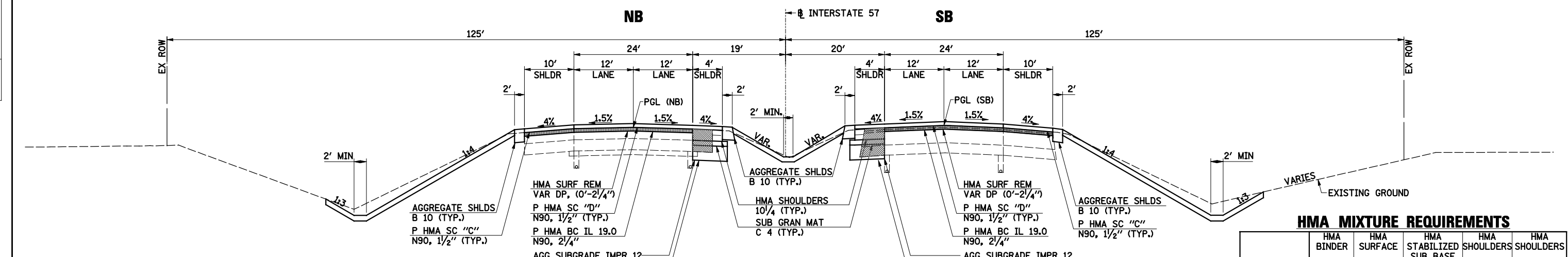


PLAN	SURVEYED	DATE
	PLOTTED	
	CHECKED	
	AT	
	BY	
	NO.	

PROFILE	SURVEYED	DATE
	PLOTTED	
	CHECKED	
	AT	
	BY	
	NO.	



EXISTING TYPICAL SECTION
STA. 837+66.00 TO STA. 850+50.00

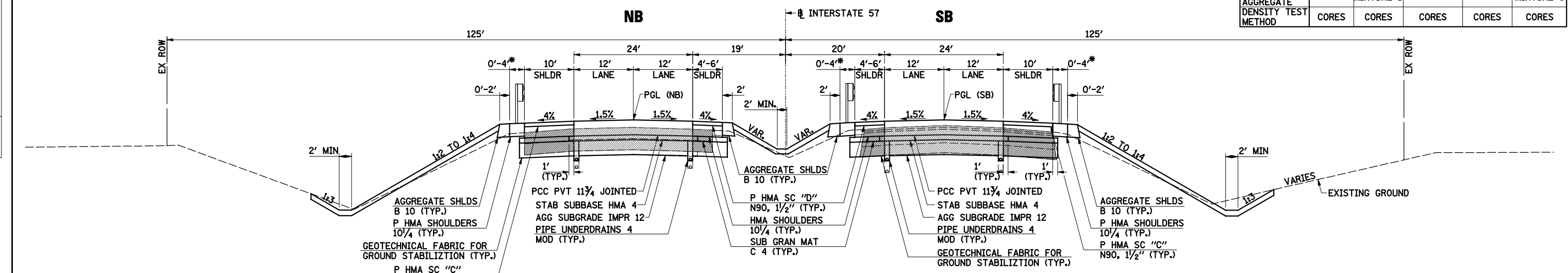


PROPOSED TYPICAL SECTION

STA. 838+25.00 TO STA. 839+71.50 (NB)
STA. 838+25.00 TO STA. 839+79.50 (SB)
BRIDGE OMISSION
STA. 847+06.00 TO STA. 849+05.00 (NB)
STA. 847+82.00 TO STA. 849+05.00 (SB)

HMA MIXTURE REQUIREMENTS

	HMA BINDER	HMA SURFACE	HMA STABILIZED SUB BASE	HMA SHOULDERS	HMA SHOULDERS TOP 1.5"
PG GRADE*	SBS PG 70-22	SBS PG 70-22	PG 64-22	PG 64-22	PG 64-22
DESIGN AIR VOIDS	4.0% @ N90	4.0% @ N90	2.0% @ N30	4.0% @ N70	4.0% @ N70
MIXTURE COMPOSITION		IL 9.5	IL 19.0L	IL 19.0	IL 9.5
FRICTION		MIXTURE D			MIXTURE C
AGGREGATE					
DENSITY TEST METHOD	CORES	CORES	CORES	CORES	CORES



PROPOSED TYPICAL SECTION

STA. 839+71.50 TO STA. 841+27.07 (NB)
STA. 839+79.50 TO STA. 841+63.46 (SB)
BRIDGE CONNECTOR PAVEMENT
STA. 841+27.07 TO STA. 842+22.40 (NB)
STA. 841+63.46 TO STA. 842+58.8 (SB)
BRIDGE OMISSION
BRIDGE CONNECTOR PAVEMENT
STA. 845+07.87 TO STA. 846+02.86 (NB)
STA. 845+44.36 TO STA. 846+39.46 (SB)

* FOR GUARDRAIL LOCATIONS SEE GUARDRAIL SCHEDULES ON PLAN AND PROFILE SHEETS

LEGEND

- EX PAVEMENT REMOVAL
- EX HMA SHOULDER REMOVAL

FILE NAME = D366944_sht.txd



USER NAME = bhenrichs	DESIGNED BAH	REVISED
DRAWN BAH	REVISED	
CHECKED KAC	REVISED	
DATE 12/07/2012	REVISED	

STATE OF ILLINOIS
DEPARTMENT OF TRANSPORTATION

INTERSTATE 57 OVER LANGAN CREEK
TYPICAL SECTIONS

SCALE: SHEET 1 OF 2 SHEETS STA. TO STA.

F.A.I. RTE.	SECTION	COUNTY	TOTAL SHEETS	SHEET NO.
57	141 BR(SB) & 38-1 BR(NB)	IROQUOIS	138	12
CONTRACT NO. 66944			ILLINOIS FED. AID PROJECT	