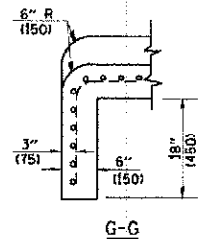
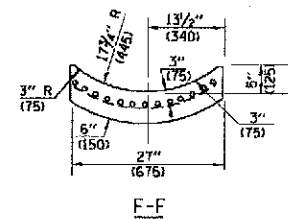
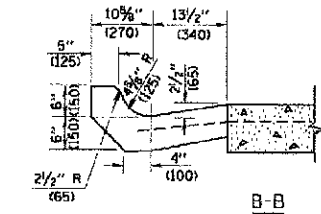
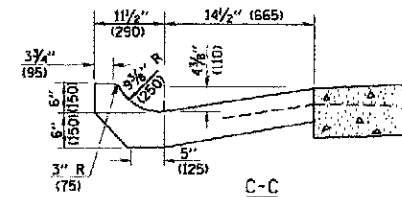
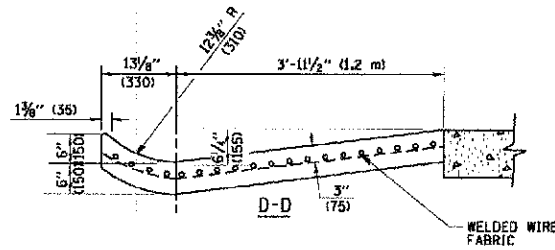
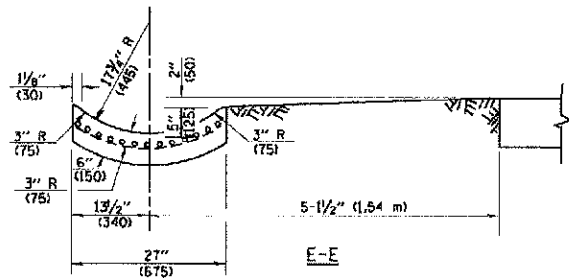


A-A *

* DIMENSIONS OF THE CURB & GUTTER AT SECTION A-A ARE SHOWN ON STATE STANDARD 606001. FOR DETAILS OF OUTLET FOR CONCRETE CURB & GUTTER, TYPE B-6.24 (B-15.60) SEE STATE STANDARD 606006.



GENERAL NOTES

GUTTER OUTLET SHALL BE TIED TO THE PAVEMENT IN ACCORDANCE WITH DETAILS FOR LONGITUDINAL CONSTRUCTION JOINT SHOWN ON STANDARD 420001.

TIE BARS SHALL BE NO. 20 (NO.6) AT 24\"/>

IF THE AVERAGE GRADE OF PAVEMENT FOR THE DISTANCE FROM SECTION A-A TO D-D EXCEEDS 2%, THIS DISTANCE SHALL BE INCREASED 6\"/>

QUANTITIES

FOR SECTION A-A TO E-E AND CURTAIN WALL-
 1.25 CU. YDS. (0.96 m³) CLASS S1 CONCRETE (OUTLET) FOR 9\"/>

ALL DIMENSIONS ARE IN INCHES (MILLIMETERS) UNLESS OTHERWISE SHOWN.

COPYRIGHT © 2011 BY M. DE YONG & ASSOCIATES, INC. PROJECT: STATE OF ILLINOIS - PROFESSIONAL DESIGN FIRM. DRAWING NO.: 08-04-86. DATE: 08-04-86.

FILE NAME = W:\data\12x34\3483.dgn	USER NAME = gogianebt	DESIGNED - M. DE YONG	REVISED - R. SHAH 09-09-94	STATE OF ILLINOIS DEPARTMENT OF TRANSPORTATION	OUTLET FOR CONCRETE CURB AND GUTTER		F.A.S. RTE. SECTION	COUNTY	TOTAL SHEETS	SHEET NO.
	PLOT SCALE = 50.0000 1/16 IN.	DRAWN -	REVISED - R. SHAH 10-25-94		3533	09-0072-00-PV	COOK	21	12	
	PLOT DATE = 1/4/2008	CHECKED -	REVISED - E. GOMEZ 12-21-00		SCALE: NONE		RD600-01 (BD-03)	CONTRACT NO. 63811		
		DATE - 08-04-86	REVISED -		SHEET NO. 1 OF 1 SHEETS		STA. TO STA.		FED. ROAD DIST. NO. 1 ILLINOIS FED. AID PROJECT	