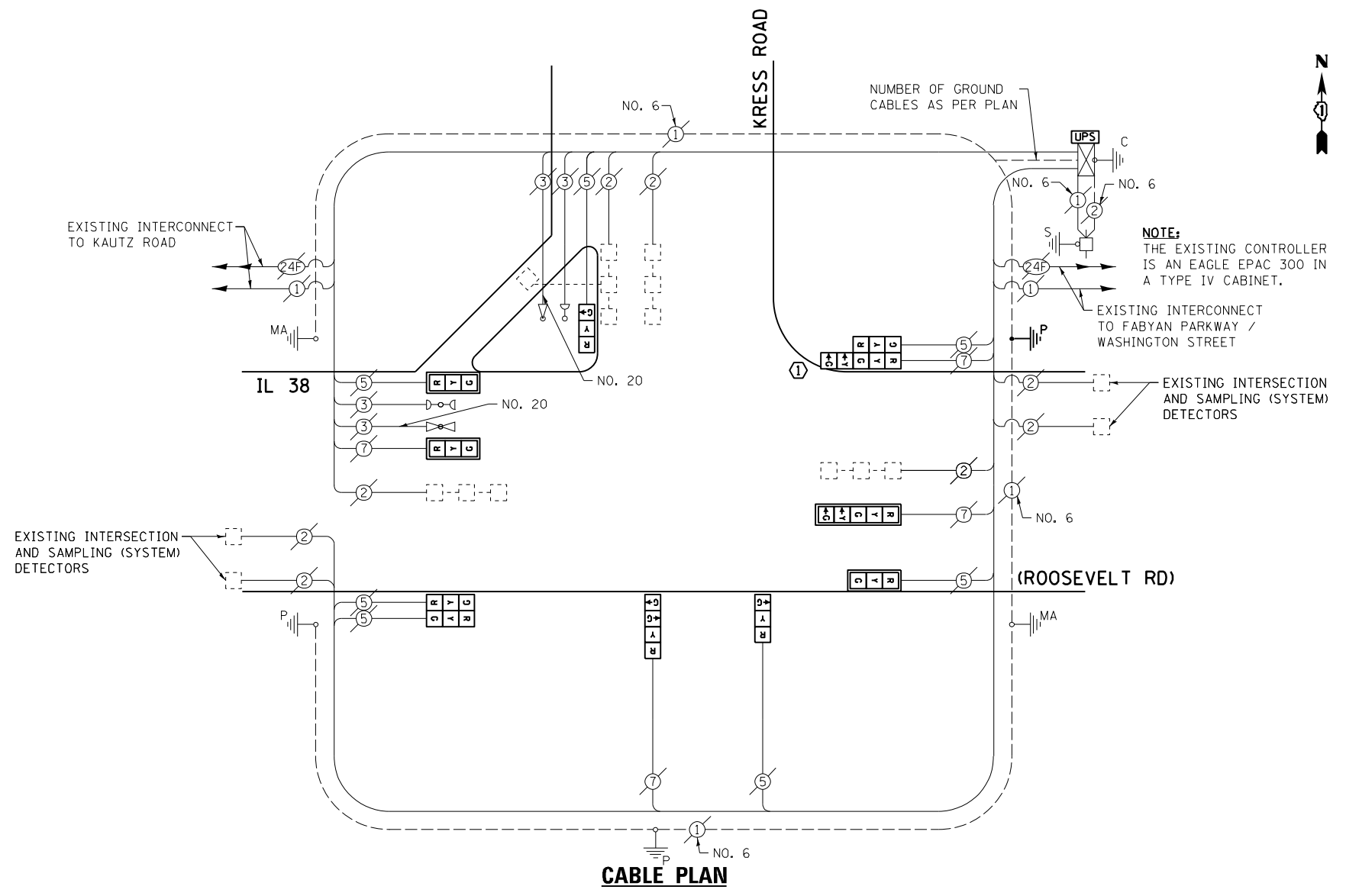


SCHEDULE OF QUANTITIES
IL 38 (ROOSEVELT RD) AT KRESS ROAD

NO.	QUANT.	UNIT	DESCRIPTION
1.	1	EACH	MAINTENANCE OF EXISTING TRAFFIC SIGNAL INSTALLATION
2.	1	EACH	TRAFFIC SIGNAL POST, GALVANIZED STEEL 16 FT.
3.	3	EACH	SIGNAL HEAD, LED, 1-FACE, 3-SECTION, MAST-ARM MOUNTED
4.	2	EACH	SIGNAL HEAD, LED, 1-FACE, 3-SECTION, BRACKET MOUNTED
5.	1	EACH	SIGNAL HEAD, LED, 1-FACE, 4-SECTION, BRACKET MOUNTED
6.	1	EACH	SIGNAL HEAD, LED, 1-FACE, 5-SECTION, MAST-ARM MOUNTED
7.	1	EACH	SIGNAL HEAD, LED, 2-FACE, 3-SECTION, BRACKET MOUNTED
8.	1	EACH	SIGNAL HEAD, LED, 2-FACE, 1-3 SECTION, 1-5 SECTION, BRACKET MOUNTED
9.	4	EACH	TRAFFIC SIGNAL BACKPLATE, LOUVERED, ALUMINUM
10.	1	EACH	MODIFY EXISTING CONTROLLER CABINET
11.	1	EACH	REMOVE EXISTING TRAFFIC SIGNAL EQUIPMENT
12.	1	EACH	UNINTERRUPTABLE POWER SUPPLY, SPECIAL



NOTE:
THE EXISTING CONTROLLER IS AN EAGLE EPAC 300 IN A TYPE IV CABINET.

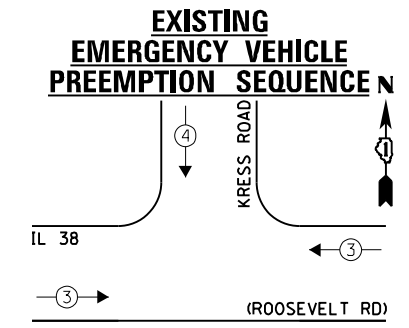
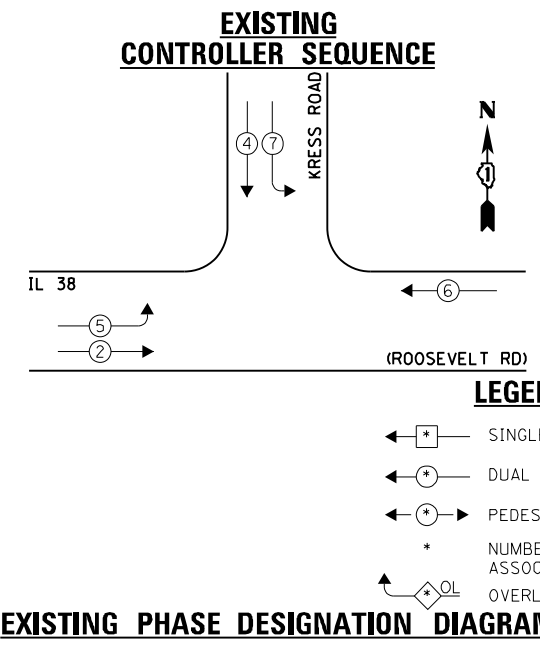
THE FOLLOWING ITEMS SHALL BE REMOVED BY THE CONTRACTOR AND SHALL BE DISPOSED OF BY THEM OUTSIDE THE RIGHT-OF-WAY AT THEIR EXPENSE. THE SALVAGE VALUE OF THE REMOVED EQUIPMENT SHALL BE REFLECTED IN THE CONTRACT BID PRICE.

- 6 EACH TRAFFIC SIGNAL HEAD, 1-FACE, 3-SECTION
- 1 EACH TRAFFIC SIGNAL HEAD, 1-FACE, 4-SECTION
- 1 EACH TRAFFIC SIGNAL HEAD, 1-FACE, 5-SECTION
- 1 EACH TRAFFIC SIGNAL HEAD, 2-FACE, 3-SECTION
- 1 EACH TRAFFIC SIGNAL HEAD, 2-FACE, 1-3 SECTION, 1-5 SECTION
- 1 EACH TRAFFIC SIGNAL POST
- 4 EACH TRAFFIC SIGNAL BACKPLATE

I.D.O.T. TRAFFIC SIGNAL INSTALLATION ELECTRICAL SERVICE REQUIREMENTS				TOTAL WATTAGE
TYPE	NO. LAMPS	WATTAGE INCAND. L.E.D.	OPERATION	
SIGNAL (RED)	11	135 17	0.50	93.5
SIGNAL (YELLOW)	11	135 25	0.25	68.75
SIGNAL (GREEN)	11	135 15	0.25	41.25
ARROW	4	135 12	0.10	4.8
PED. SIGNAL	-	90 25	1.00	-
CONTROLLER	1	- 100	1.00	100.0
LUMINAIRE	-	- 250	0.50	-
L.E.D. ST. NAME SIGN	-	- 64	0.50	-
VIDEO SYSTEM	-	- 150	1.00	-
BATTERY BACKUP	1	- 25	1.00	25.0
ILLUMINATED SIGN	-	- 25	0.05	-
TOTAL =				333.3

ENERGY COSTS - BILLED TO: IL DEPT. OF TRANSPORTATION
(ADDRESS) 201 W. CENTER COURT
(ADDRESS) SCHAMBURG, IL 60196-1096
ENERGY SUPPLY - CONTACT: JOE STACHO
PHONE: (630) 424-5704
COMPANY: CQM-ED

CONSTRUCTION NOTE:
① REMOVE EXISTING SIGNAL HEADS AND REPLACE EXISTING 16 FOOT PAINTED POST. INSTALL NEW LED SIGNAL HEADS ON NEW 16 FOOT GALVANIZED STEEL POST. REUSE EXISTING TYPE "A" CONCRETE FOUNDATION AND EXISTING CABLES.



EXISTING EMERGENCY VEHICLE PREEMPTORS	
EMERGENCY VEHICLE PREEMPTOR	3 4
MOVEMENT	→ ↓

FILE NAME = 60V80-088-ts.dgn	USER NAME = zwallsten	DESIGNED - JRD	REVISED -
Default	PLOT SCALE = 1:20	DRAWN - JPW	REVISED -
	PLOT DATE = 12/20/2012	CHECKED - KLB	REVISED -
		DATE - 12-20-12	REVISED -

STATE OF ILLINOIS
DEPARTMENT OF TRANSPORTATION

SCHEDULE OF QUANTITIES, CABLE PLAN, PHASE DESIGNATION DIAGRAM, & EMERGENCY VEHICLE PREEMPTION SEQUENCE
IL 38 (ROOSEVELT RD) AT KRESS ROAD
SCALE: NONE SHEET OF SHEETS STA. TO STA.

F.A. RTE. VARIES	SECTION 2012-070 I	COUNTY DuPAGE	TOTAL SHEETS 103	SHEET NO. 88
			CONTRACT NO. 60V80	
ILLINOIS FED. AID PROJECT				