

STATE OF ILLINOIS
 DEPARTMENT OF TRANSPORTATION
 DIVISION OF HIGHWAYS

**PROPOSED
 HIGHWAY PLANS**

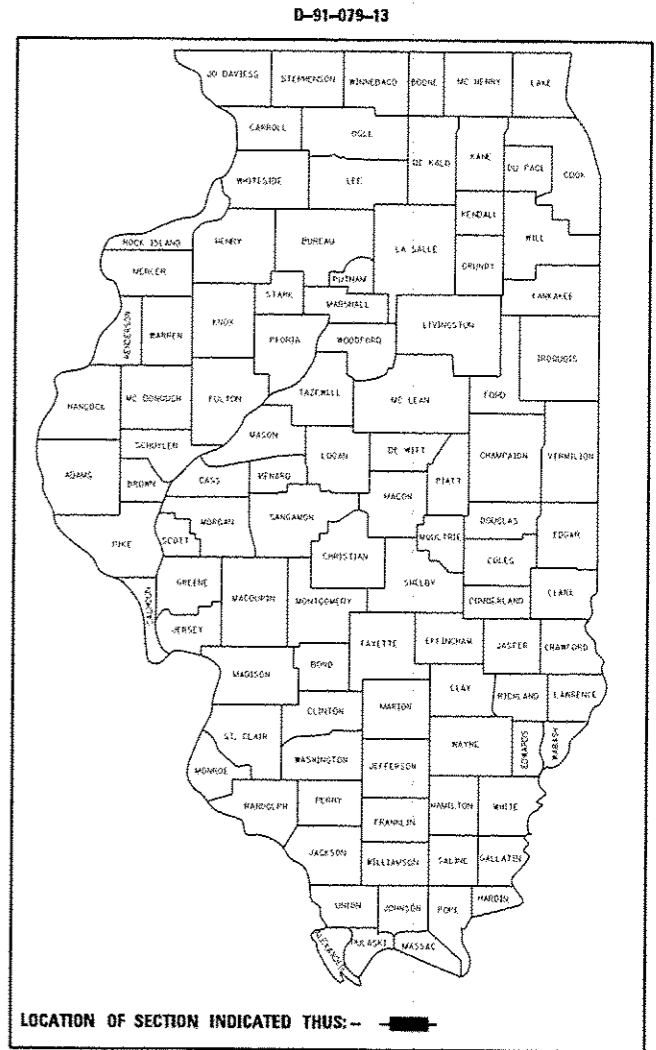
VARIOUS LOCATIONS IN NORTH DuPAGE COUNTY
 LIGHT EMITTING DIODE (LED) INSTALLATION
 SECTION 2012-070 I
 DuPAGE COUNTY
 C-91-079-13

F.A. RTE.	SECTION	COUNTY	TOTAL SHEETS	SHEET NO.
VARIES	2012-070 I	DuPAGE	103	1
		ILLINOIS	CONTRACT NO. 60V80	

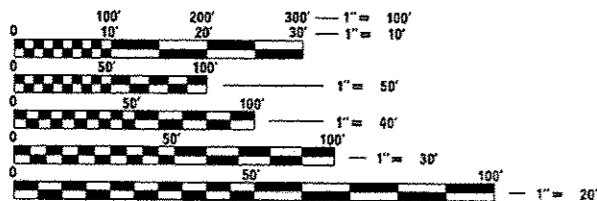
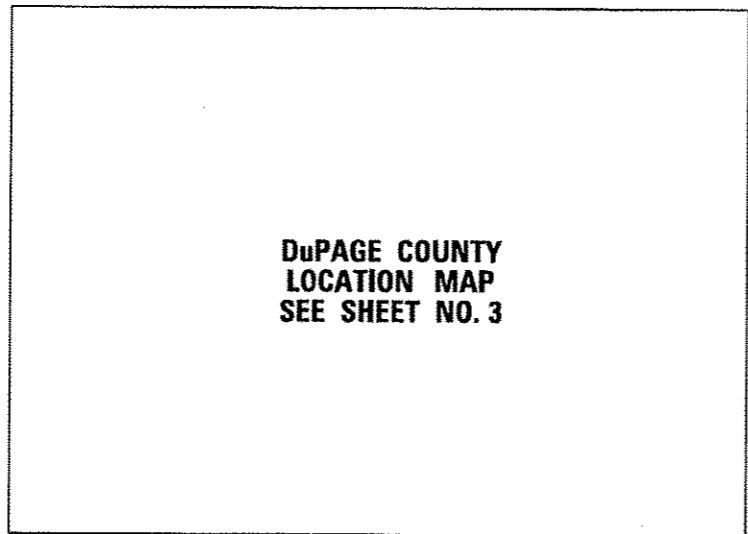
FOR INDEX OF SHEETS, SEE SHEET NO. 2

HIGHWAY STANDARDS

- 701006-04 OFF-ROAD OPERATIONS 2L, 2W, 15' (4.5 m) TO 24" (600 mm) FROM PAVEMENT EDGE
- 701101-03 OFF-ROAD OPERATIONS MULTILANE, 15' (4.5 m) TO 24" (600 mm) FROM PAVEMENT EDGE
- 701701-08 URBAN LNE CLOSURE MULTILANE INTERSECTION
- 701901-02 TRAFFIC CONTROL DEVICES
- 857001-01 STANDARD PHASE DESIGNATION DIAGRAMS AND PHASE SEQUENCES
- 862001-01 UNINTERRUPTABLE POWER SUPPLY (UPS)
- 880006-01 TRAFFIC SIGNAL MOUNTING DETAILS
- 880001-01 SPAN WIRE MOUNTED SIGNALS AND FLASHING BEACON INSTALLATION



FINAL



FULL SIZE PLANS HAVE BEEN PREPARED USING STANDARD ENGINEERING SCALES. REDUCED SIZED PLANS WILL NOT CONFORM TO STANDARD SCALES. IN MAKING MEASUREMENTS ON REDUCED PLANS, THE ABOVE SCALES MAY BE USED.

J.U.L.I.E.
 JOINT UTILITY LOCATION INFORMATION FOR EXCAVATION
 1-800-892-0123
 OR 811

SIGNED: *Kevin L. Belgrave*
 KEVIN L. BELGRAVE, EXP. 11/30/2013
 DATE: *Dec 19, 2012*

STATE OF ILLINOIS
 DEPARTMENT OF TRANSPORTATION
 DIVISION OF HIGHWAYS

SUBMITTED *Dec 20 2012*
John Lockman
 DEPUTY DIRECTOR OF HIGHWAYS, REGION ENGINEER

Feb 1 2013
John D. Baumgardner, P.E.
 acting ENGINEER OF DESIGN AND ENVIRONMENT

Feb 1 2013
Omer Osman, P.E.
 DIRECTOR OF HIGHWAYS, CHIEF ENGINEER

GHA GEWALT HAMILTON
 ASSOCIATES, INC.

850 Forest Edge Drive • Vernon Hills, IL. 60061
 Consulting Engineers & Surveyors
 847-478-9700
 FAX: 847-478-8701

**PRINTED BY THE AUTHORITY
 OF THE STATE OF ILLINOIS**

CONTRACT NO. 60V80

DISTRICT 1 - TRAFFIC SIGNAL DESIGN - SUDAD MAHMOUD (847) 705-4420