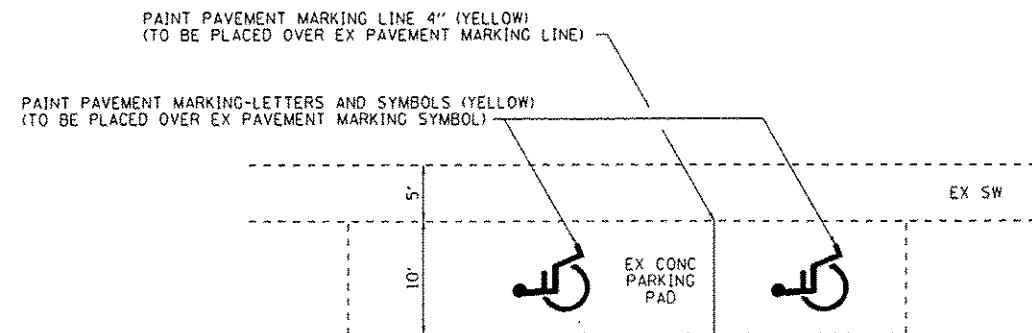
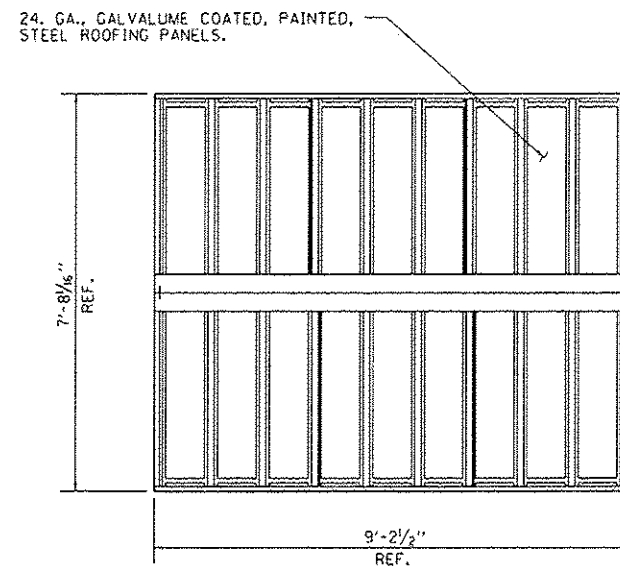


**DISABLED PARKING STALL STRIPING DIMENSIONS**  
EAST ROAD RESTROOM  
MAINTENANCE SHED PARKING AREA

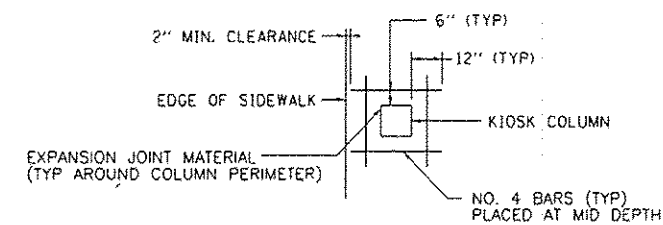


**DISABLED PARKING STALL STRIPING DIMENSIONS**  
ROUND POND PARKING AREA  
CLUB PARKING AREA

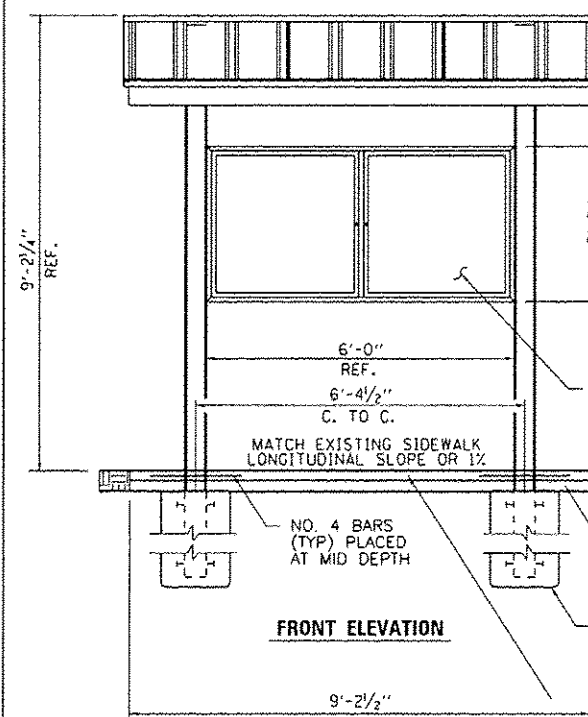


**ROOF PLAN**

- NOTES:
- SOLAR LIGHT AND POWER ASSEMBLY SHALL ONLY BE INSTALLED ON KIOSK LOCATED AT STA 20+30.68 (EAST ROAD).
  - PROPOSED SIDEWALK SHALL BE CONSTRUCTED IN ACCORDANCE WITH CURRENT ADA REQUIREMENTS (NO SLOPE SHALL EXCEED 2% IN ANY DIRECTION).
  - EXPANSION JOINT MATERIAL AND REBAR SHALL BE PLACED AROUND THE KIOSK SUPPORTS WHERE THEY ARE ADJACENT TO THE PCC SIDEWALK (SEE DETAIL). COST INCIDENTAL TO INFORMATION KIOSK COMPLETE.
  - ALL EXCAVATION OR EMBANKMENT REQUIRED TO CONSTRUCT THE KIOSK, PCC SIDEWALK AND AGGREGATE BASE COURSE SHALL BE CONSIDERED INCIDENTAL TO THE COST OF THE INFORMATION KIOSK COMPLETE.

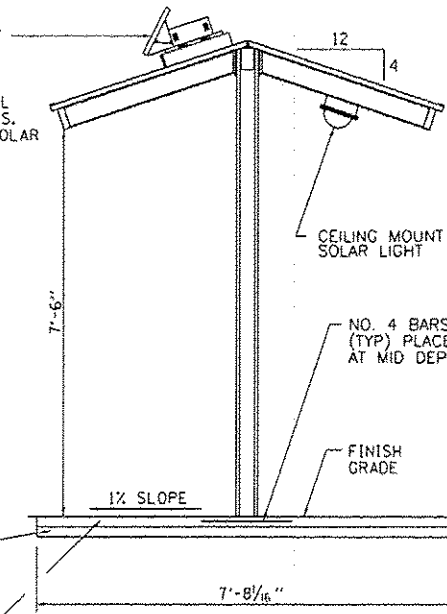


**COLUMN PLAN VIEW**



**FRONT ELEVATION**

SOLAR ELECTRIC POWER ASSEMBLY (SOLAR PANEL TO FACE SOUTH). SOLAR PANEL TO BE MOUNTED ON KIOSK ACCORDING TO KIOSK MANUFACTURER'S AND SOLAR PANEL MANUFACTURER'S RECOMMENDATIONS. MOUNTING COST INCIDENTAL TO SOLAR LIGHTING UNIT COMPLETE.



**SIDE VIEW**

**TYPICAL KIOSK DETAILS**

NO SCALE

FILE NAME * L:\1007\11066-10-11\10-01-CADD_Sheets\B16	USER NAME * Jack Blokemore	DESIGNED - JWB	REVISED -
MISCELLANEOUS DETAILS.dgn	DRAWN - AJK	REVISIONS -	
PLOT SCALE * 6.0000 1/16"	CHECKED - SPH	REVISIONS -	
PLOT DATE * 12/21/2012	DATE - 12/21/2012	REVISIONS -	

STATE OF ILLINOIS  
DEPARTMENT OF TRANSPORTATION

MISCELLANEOUS DETAILS  
MERMET LAKE STATE FISH AND WILDLIFE AREA

SCALE: NTS SHEET NO. 1 OF 1 SHEETS STA. N/A TO STA. N/A

F.A. RTE.	SECTION	COUNTY	TOTAL SHEETS	SHEET NO.
	PARK ROADS	MASSAC	16	16
CONTRACT NO. 46253				
ILLINOIS FED. AID PROJECT				