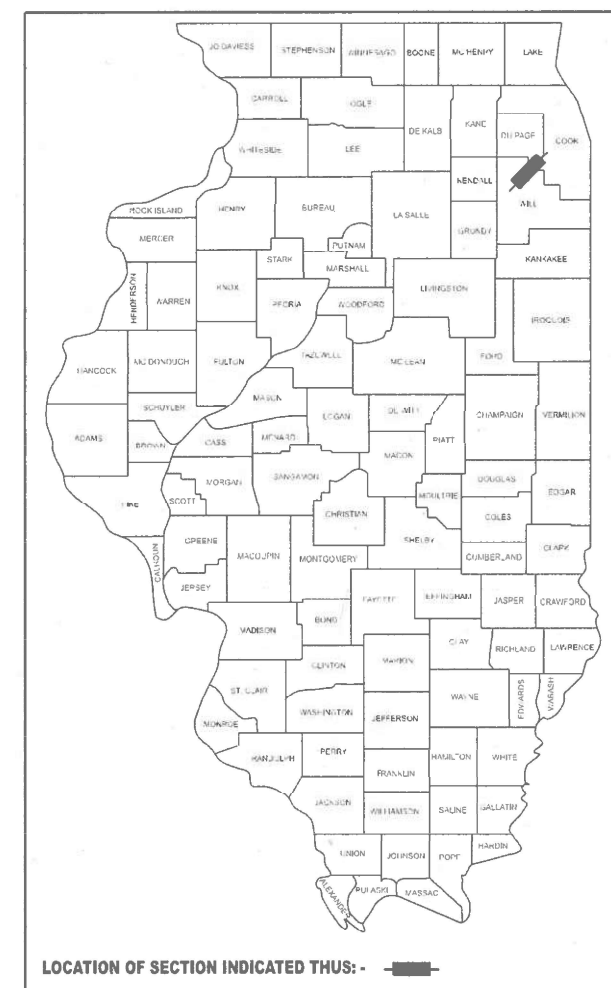


STATE OF ILLINOIS
DEPARTMENT OF TRANSPORTATION

F.A.I. RTE.	SECTION	COUNTY	TOTAL SHEETS	SHEET NO.
55	2024-1036-I	ILLINOIS	6	1
CONTRACT NO. 62X76			*COOK, DUPAGE, WILL	

D-91-067-25

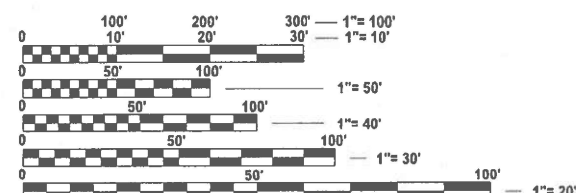


FOR INDEX OF SHEETS, SEE SHEET NO. 2

PROPOSED HIGHWAY PLANS

FAI ROUTE 55
ILL 43 (HARLEM AVE) TO REED RD
SECTION 2024-1036-I
EXPRESSWAY HIGHWAY CLEANING (LITTER/ DEBRIS REMOVAL)
COUNTIES: COOK, DUPAGE, & WILL

C-91-088-25



FULL SIZE PLANS HAVE BEEN PREPARED USING STANDARD ENGINEERING SCALES. REDUCED SIZED PLANS WILL NOT CONFORM TO STANDARD SCALES. IN MAKING MEASUREMENTS ON REDUCED PLANS, THE ABOVE SCALES MAY BE USED.

J.U.L.I.E.
JOINT UTILITY LOCATION INFORMATION FOR EXCAVATION
1-800-892-0123
OR 811

PROJECT ENGINEER: OSCAR OLIVEROS (847) 705-4548
PROJECT MANAGER: JACEK EJMONT (847) 705-4641

CONTRACT NO. 62X76

LOCATION MAP - SEE INDEX OF SHEETS

GROSS LENGTH = 195,360 FT. = 37.0 MILE
NET LENGTH = 195,360 FT. = 37.0 MILE

STATE OF ILLINOIS
DEPARTMENT OF TRANSPORTATION

SUBMITTED Dec 16²⁰ 24 IR

[Signature] REGIONAL ENGINEER

January 31²⁰ 25

[Signature] ENGINEER OF DESIGN AND ENVIRONMENT

January 31²⁰ 25

[Signature] 5
DIRECTOR OF HIGHWAYS PROJECT IMPLEMENTATION

**PRINTED BY THE AUTHORITY
OF THE STATE OF ILLINOIS**

INDEX OF SHEETS

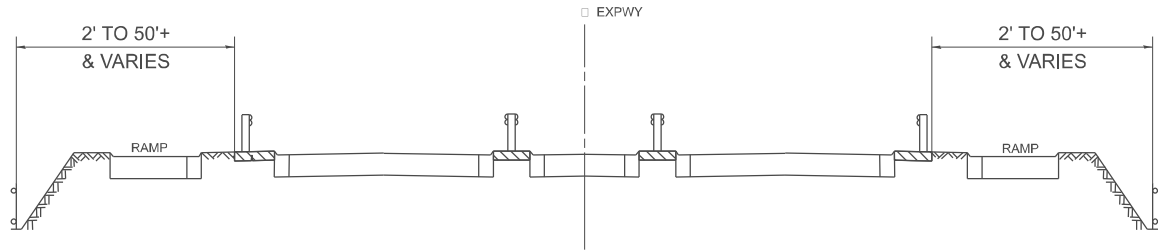
1. TITLE SHEET
2. INDEX OF SHEETS AND STATE STANDARDS
3. GENERAL NOTES, SUMMARY OF QUANTITIES, & TYPICAL EXPRESSWAY CROSS-SECTIONS
4. I-55 EXPRESSWAY CLEANING MAP
IL-43 (HARLEM AVE) TO I-355
5. I-55 EXPRESSWAY CLEANING MAP
I-355 TO REED RD
6. TRAFFIC CONTROL DETAILS FOR FREEWAY SHOULDER CLOSURES
AND PARTIAL RAMP CLOSURES (TC-17)

STATE STANDARDS

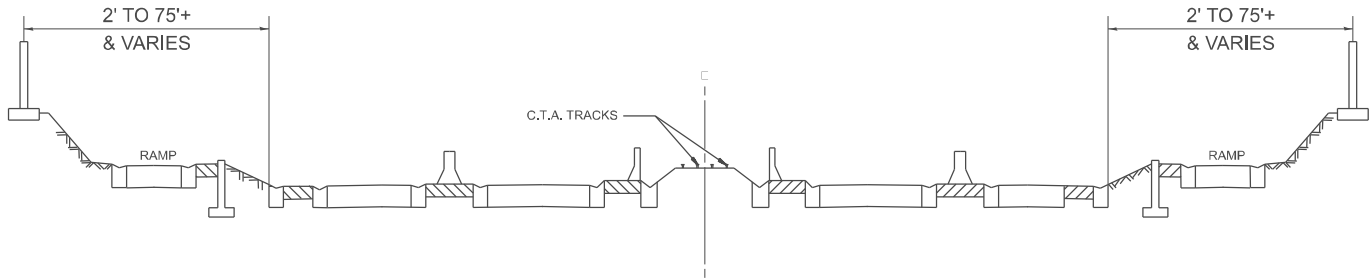
- 701106-02 OFF-ROAD OPERATION MULTILANE, MORE THAN 15' AWAY
- 701411-09 LANE CLOSURE, MULTILANE, AT ENTRANCE OR EXIT RAMP, FOR SPEEDS ≥ 45 MPH
- 701426-09 LANE CLOSURE, MULTILANE, INTERMITTENT OR MOVING OPER., FOR SPEEDS ≥ 45 MPH
- 701901-10 TRAFFIC CONTROL DEVICES

MODEL: GenNotesSh01 [Sheet]
FILE NAME: c:\pw_work\pwtot\illinois.gov\jacek.ejmont@illinois.gov\1063074\106725-shl-gennote.dgn

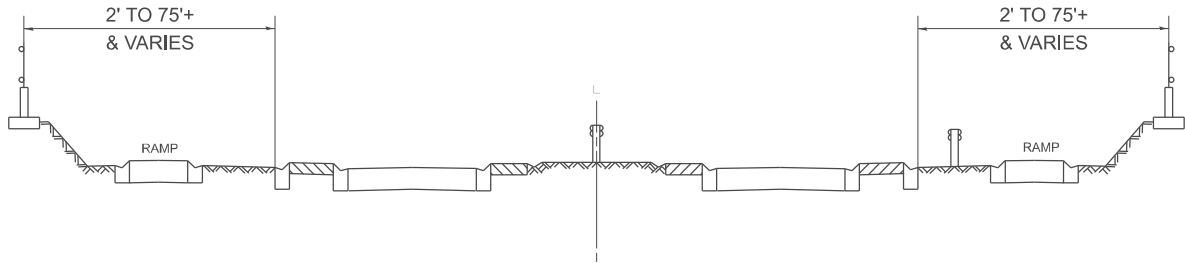
	USER NAME = jacek.ejmont	DESIGNED -	REVISED -	STATE OF ILLINOIS DEPARTMENT OF TRANSPORTATION	INDEX OF SHEETS AND STATE STANDARDS IL-43 (HARLEM AVE) TO I-355				F.A.I RTE.	SECTION	COUNTY	TOTAL SHEETS	SHEET NO.
		DRAWN -	REVISED -						55	2024-1036-I	*	6	2
	PLOT SCALE = \$SCALE\$	CHECKED -	REVISED -		CONTRACT NO. 62X76								
	PLOT DATE = 12/14/2024	DATE -	REVISED -		SCALE:	SHEET	OF	1	SHEETS	STA.	TO STA.		
										ILLINOIS	FED. AID PROJECT	*COOK, DUPAGE, WILL	



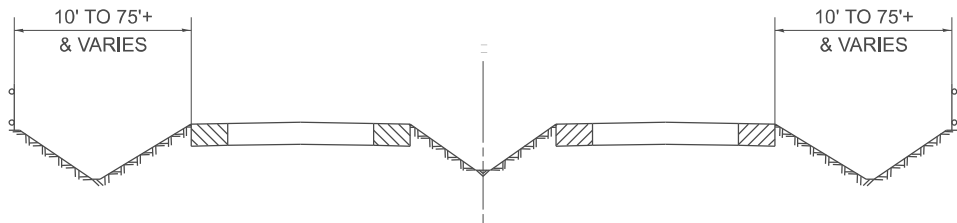
TYPICAL EXPRESSWAY CROSS-SECTION NO. 1



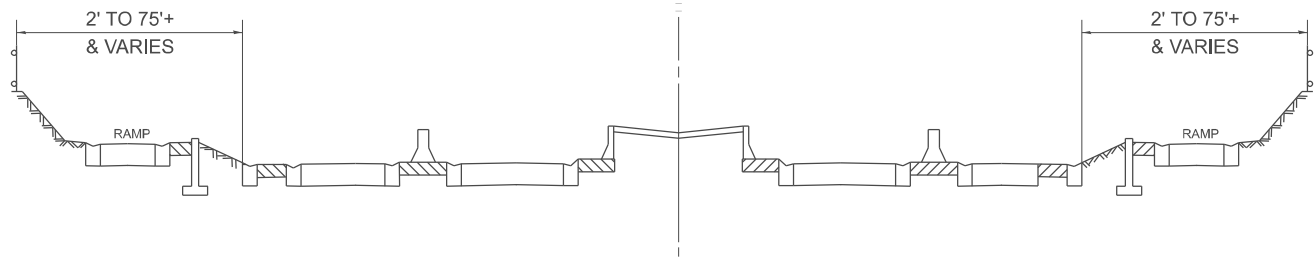
TYPICAL EXPRESSWAY CROSS-SECTION NO. 2



TYPICAL EXPRESSWAY CROSS-SECTION NO. 3



TYPICAL EXPRESSWAY CROSS-SECTION NO. 4



TYPICAL EXPRESSWAY CROSS-SECTION NO. 5

NOTES:

- SCHEDULE MAY VARY AS DIRECTED BY THE ENGINEER.
- NO DAILY CONTRACTOR WORK REQUESTS/SCHEDULING SHALL BE AUTHORIZED OR APPROVED TO START WHEN IT IS DETERMINED BY THE ENGINEER THAT WEATHER CONDITIONS WILL BE UNFAVORABLE. APPROVAL OF DAILY CONTRACTOR WORK SCHEDULE REQUEST SHALL BE SOLELY DETERMINED BY THE ENGINEER.
- ALL SHOULDER CLOSURES SHALL BE IMMEDIATELY REMOVED DURING ALL ADVERSE WEATHER CONDITIONS WITHOUT EXCEPTION, INCLUDING BUT NOT LIMITED TO RAIN, WET ROAD SURFACE (SPRAY FROM TIRES), MIST, DRIZZLE, SLEET, SNOW, FOG AND ANY OTHER CIRCUMSTANCE DETERMINED UNSAFE BY THE ENGINEER. THE CONTRACTOR SHALL IMPLEMENT THIS CONTRACT REQUIREMENT IMMEDIATELY WITHOUT WAITING FOR DEPARTMENT'S INSTRUCTION.
- NO WORK WILL BE ALLOWED ON THE FOLLOWING LEGAL HOLIDAYS UNLESS IT IS CONSIDERED AN EMERGENCY, IMMEDIATE HAZARD OR ANY WORK AS DESIGNATED BY THE DEPARTMENT THAT REQUIRES FIRST PRIORITY CORRECTIVE ACTION:

EASTER HOLIDAY
MEMORIAL DAY HOLIDAY
INDEPENDENCE DAY HOLIDAY
LABOR DAY HOLIDAY
THANKSGIVING HOLIDAY
CHRISTMAS HOLIDAY
NEW YEARS HOLIDAY

SUMMARY OF QUANTITIES

			COOK		DUPAGE	WILL
			URBAN	100 % STATE 0044	100 % STATE 0044	100 % STATE 0044
CODE NO.	ITEM	UNIT	TOTAL QUANTITIES	EXPRESSWAY	EXPRESSWAY	EXPRESSWAY
X0326643	LITTER PICKING	MILE	594	135	135	324

MODEL: b7d (Sheet)
FILE NAME: c:\pw_work\pwt\illinois.gov_jacek.ejmont\illinois.gov\d1063074\106725-shk-typical.dgn

USER NAME = jacek.ejmont	DESIGNED -	REVISED -
DRAWN -	REVIS	ED -
PLOT SCALE = \$SCALE\$	CHECKED -	REVISED -
PLOT DATE = 12/9/2024	DATE -	REVISED -

STATE OF ILLINOIS
DEPARTMENT OF TRANSPORTATION

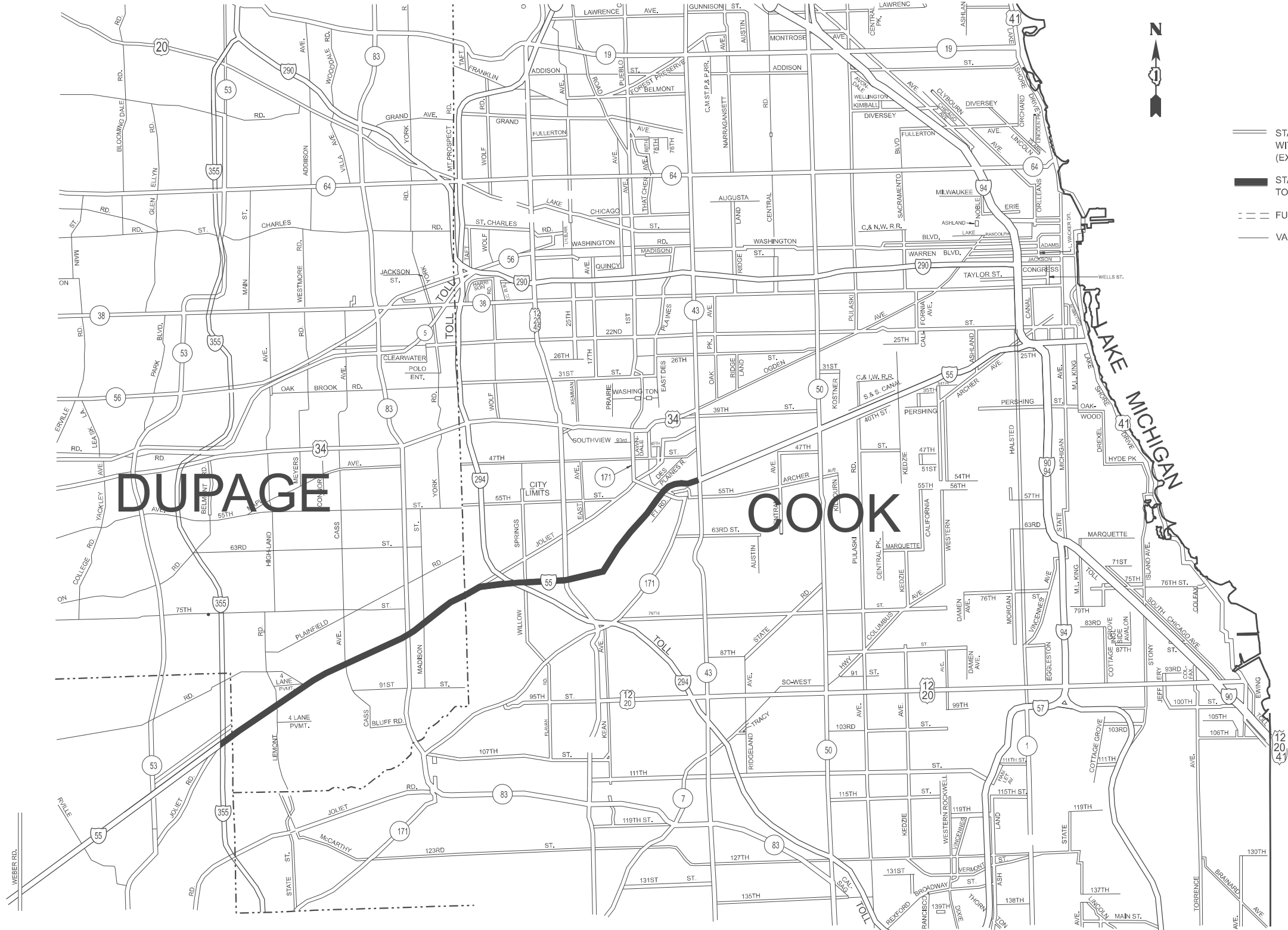
GENERAL NOTES, SUMMARY OF QUANTITIES, &
TYPICAL EXPRESSWAY CROSS-SECTIONS

SCALE: 1"=50' SHEET OF 1 SHEETS STA. TO STA.

F.A.I RTE.	SECTION	COUNTY	TOTAL SHEETS	SHEET NO.
55	2024-1036-I	*	6	3
CONTRACT NO. 62X76				
ILLINOIS FED. AID PROJECT				

*COOK, DUPAGE, WILL

MODEL: DetailSheet01 (Sheet)
FILE NAME: c:\pwworking\illinois.gov\jacob.ejmont\1063074\106725-shd-details_2.dgn



USER NAME = jacob.ejmont	DESIGNED -	REVISED -
	DRAWN -	REVISED -
PLOT SCALE = \$SCALE\$	CHECKED -	REVISED -
PLOT DATE = 12/16/2024	DATE -	REVISED -

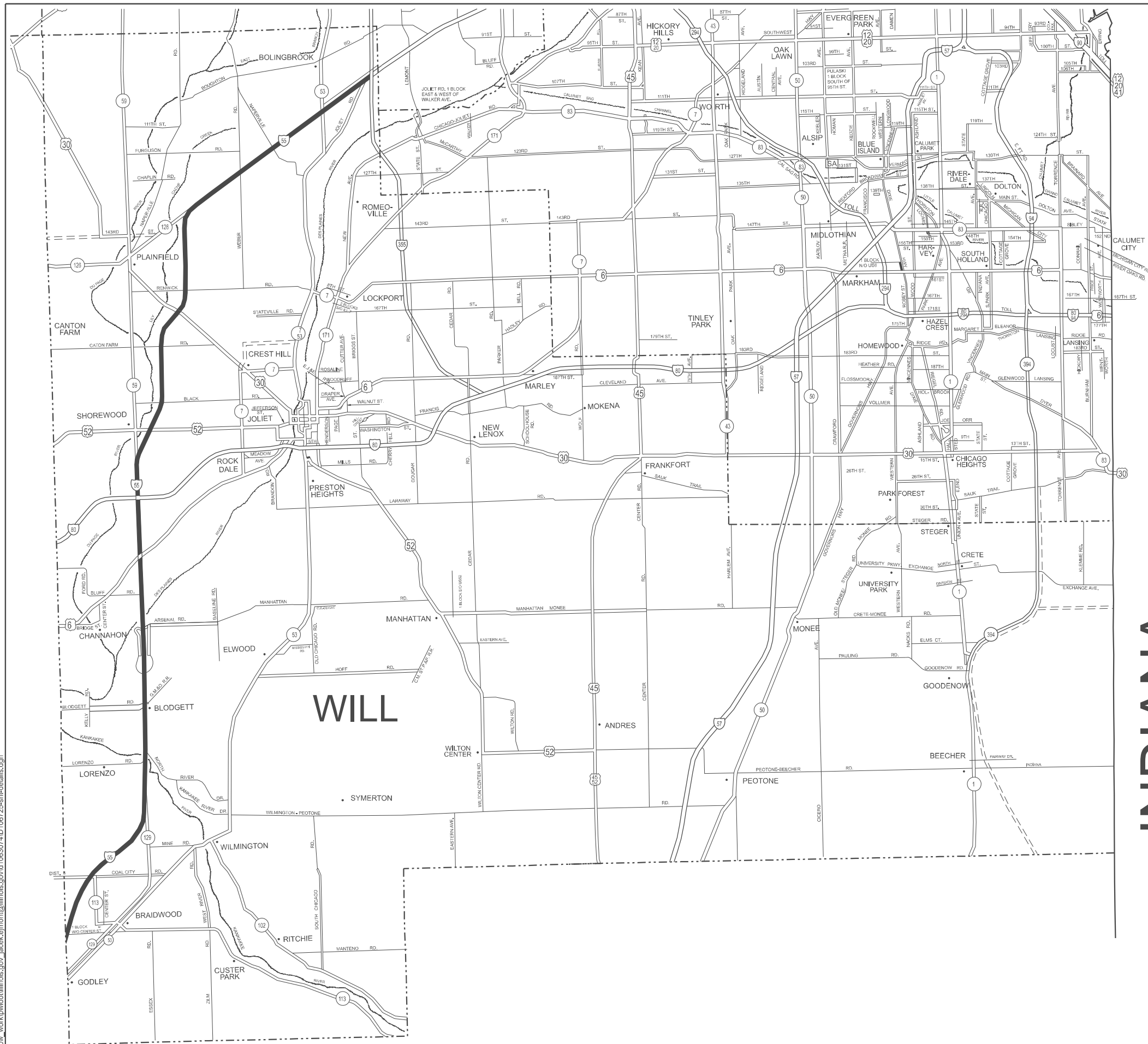
STATE OF ILLINOIS
DEPARTMENT OF TRANSPORTATION

I-55 EXPRESSWAY CLEANING MAP
IL-43 (HARLEM AVE) TO I-355

SCALE: SHEET OF 2 SHEETS STA. TO STA.

F.A.I RTE.	SECTION	COUNTY	TOTAL SHEETS	SHEET NO.
55	2024-1036-I	*	6	4
CONTRACT NO. 62X76				
ILLINOIS FED. AID PROJECT				

*COOK, DUPAGE, WILL



DISTRICT NO. 1

STATE HIGHWAYS & EXPRESSWAYS
WITHIN STATE JURISDICTION
(EXCEPT TOLLWAYS)

STATE HIGHWAYS & EXPRESSWAYS
TO BE CLEANED

FUTURE HIGHWAYS

—— VARIOUS AGENCIES HIGHWAYS

MODEL: MAP [Sheet]
FILE NAME: c:\pw work\pwidot\illinois.gov jacek.eimont@illinois.gov jacek.eimont@illinois.gov 10630741D106725-sht-details.dgn

USER NAME = jacek.ejmont	DESIGNED -	REVISED -
	DRAWN -	REVISED -
PLOT SCALE = \$SCALE\$	CHECKED -	REVISED -
PLOT DATE = 12/9/2024	DATE -	REVISED -

STATE OF ILLINOIS
DEPARTMENT OF TRANSPORTATION

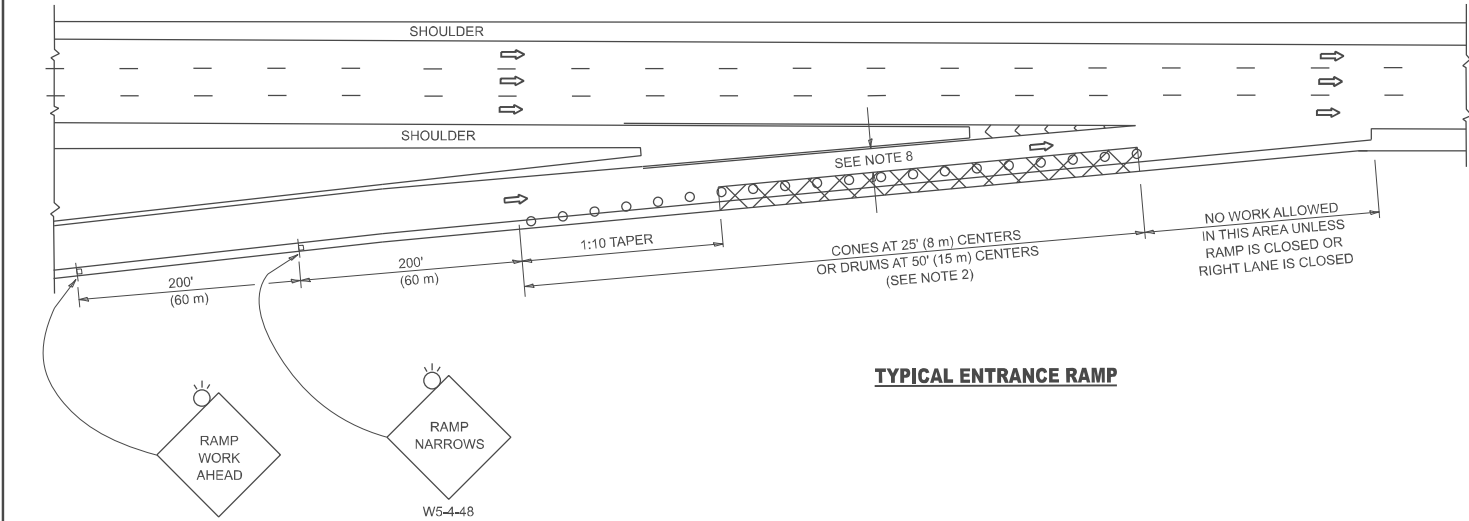
I-55 EXPRESSWAY CLEANING MAP I-355 TO REED RD

SCALE:	SHEET	OF 2	SHEETS	STA.	TO STA.
--------	-------	------	--------	------	---------

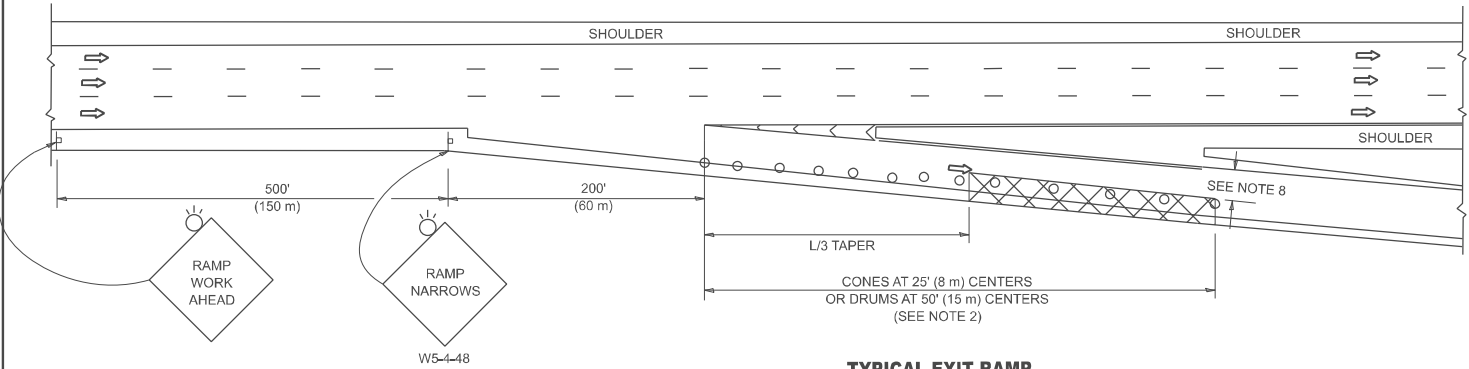
F.A.I RTE.	SECTION	COUNTY	TOTAL SHEETS	SHEET NO.
55	2024-1036-I	*	6	5
		CONTRACT NO. 62X76		
ILLINOIS		FED. AID PROJECT		

*COOK, DUPAGE, WILL

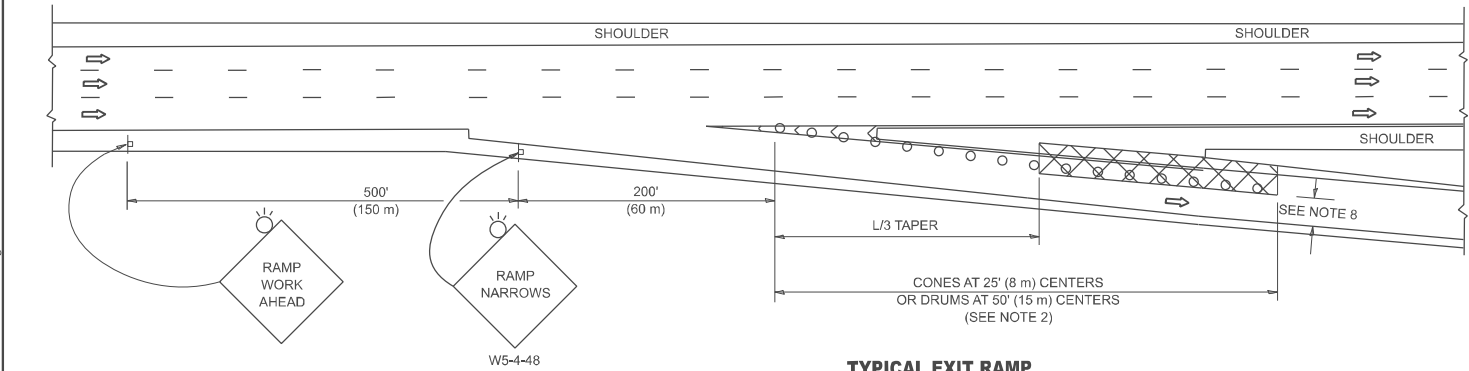
PARTIAL RAMP CLOSURE DETAILS



TYPICAL ENTRANCE RAMP



TYPICAL EXIT RAMP



TYPICAL EXIT RAMP

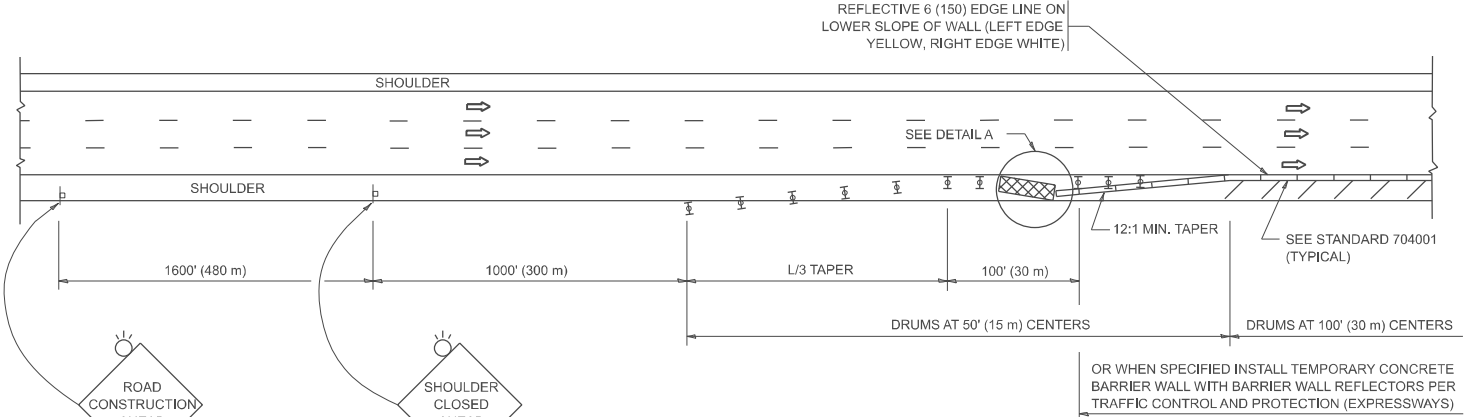
SYMBOLS

- ACTIVE WORK AREA
- SIGN ON PORTABLE OR PERMANENT SUPPORT
- FLAGGER WITH CONTROL SIGN
- TYPE II BARRICADE OR DRUM
- CONE, DRUM OR BARRICADE
- IMPACT ATTENUATOR OF TYPE AND TEST LEVEL SPECIFIED

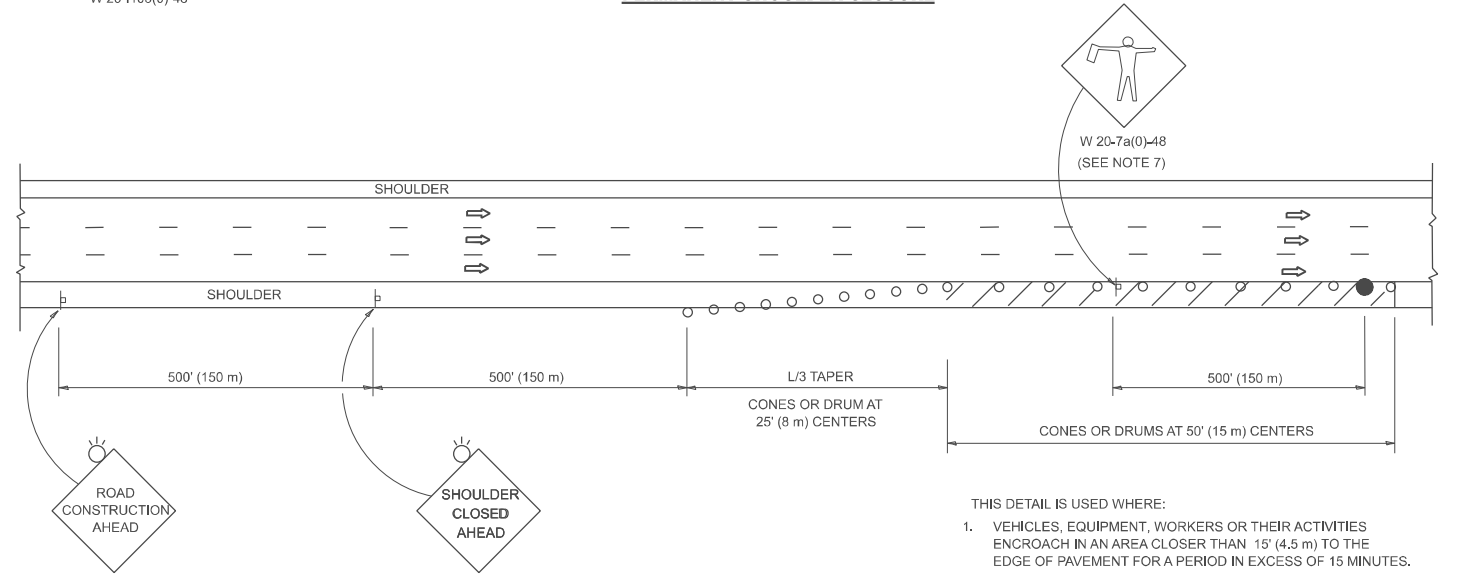
GENERAL NOTES:

- THE "L" DISTANCE EQUALS:
SPEED LIMIT FORMULAS
45 mph (80 km/h) METRIC ENGLISH
OR GREATER: L=0.65(W)(S) L=(W)(S)
W = WIDTH OF OFFSET IN FEET (METERS)
S = NORMAL POSTED SPEED MPH (KM/H)
- TYPE II BARRICADES OR DRUMS ARE REQUIRED FOR ALL NIGHTTIME CLOSURES. TYPE II BARRICADES OR DRUMS WITH MONODIRECTIONAL STEADY BURN LIGHTS ARE REQUIRED FOR DELINEATING OBSTACLES, EXCAVATIONS, OR HAZARDS EXCEEDING 100 FT (30m) IN LENGTH AT NIGHT.
- ALL SIGNS SHALL BE POST MOUNTED IF THE CLOSURE TIME EXCEEDS FOUR DAYS.
- FLASHING LIGHTS SHALL BE USED DURING THE HOURS OF DARKNESS AND SHALL BE INSTALLED ABOVE THE FIRST TWO SETS OF SIGNS.

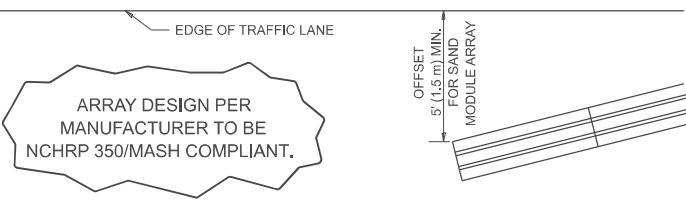
SHOULDER CLOSURE DETAILS



PERMANENT SHOULDER CLOSURE



TEMPORARY SHOULDER CLOSURE



DETAIL "A"
IMPACT ATTENUATOR, TEMPORARY
(SEE NOTE 5)

- THE IMPACT ATTENUATOR, TEMPORARY IS NOT REQUIRED WHEN THE TEMPORARY CONCRETE BARRIER WALL IS PROTECTED BY OR IS TIED INTO THE EXISTING GUARDRAIL. IF OFFSET IS LESS THAN 5 FEET USE NARROW USE TYPE DEVICE TO MEET NCHRP350/MASH.
- AUTHORIZATION FROM THE DISTRICT'S BUREAU OF TRAFFIC IS REQUIRED FOR ALL FREEWAY CLOSURES.
- THE FLAGGER AND FLAGGER SIGN ARE REQUIRED AT THE ABOVE WORK SITES WHEN:
a. FOUR OR MORE WORK VEHICLES ENTER THE TRAFFIC LANES IN A ONE HOUR PERIOD.
b. THE WORK ACTIVITY REQUIRES FREQUENT ENCR OACHMENT INTO THE LANE OPEN TO TRAFFIC.
THE FLAGGER SHALL BE STATIONED APPROXIMATELY 100' (30 m) TO 200' (60 m) IN ADVANCE OF THE WORKERS.
- 12' MIN. WIDTH TANGENT SECTION
16' MIN. WIDTH CURVE SECTION.
- TEMPORARY SHOULDER AND NON-SYSTEM INTERCHANGE PARTIAL RAMP CLOSURES ARE ALLOWED WEEKDAYS BETWEEN 9:00 A.M. AND 3:00 P.M. AND BETWEEN 7:00 P.M. AND 5:00 A.M. OR AS APPROVED BY THE EXPRESSWAY TRAFFIC OPERATIONS ENGINEER. PERMANENT SHOULDER AND PARTIAL RAMP CLOSURES WILL ONLY BE PERMITTED IF CALLED FOR IN THE PLANS OR AS APPROVED BY THE EXPRESSWAY OPERATIONS ENGINEER.

ALL DIMENSIONS ARE IN INCHES (MILLIMETERS) UNLESS OTHERWISE SHOWN.

STATE OF ILLINOIS
DEPARTMENT OF TRANSPORTATION

TRAFFIC CONTROL DETAILS FOR FREEWAY
SHOULDER CLOSURES AND PARTIAL RAMP CLOSURES

SCALE: NONE SHEET 1 OF 6 SHEETS STA. TO STA.

F.A.I RTE.	SECTION	COUNTY	TOTAL SHEETS	SHEET NO.
55	2024-1036-I	*	6	6
TC-17		CONTRACT NO. 62X76		
ILLINOIS		FED. AID PROJECT		

*COOK, DUPAGE, WILL

MODEL: TC-17 [Sheet]
FILE NAME: c:\p\work\illinois\gov\jacek.ejmont\illinois.gov\1063074\ND106725-shh-DistStd.dgn