

STATE OF ILLINOIS
DEPARTMENT OF TRANSPORTATION

| F.A. RTE. | SECTION | COUNTY | TOTAL SHEETS | SHEET NO. |
|----------------|-------------------|----------|--------------------|-----------|
| VAR | 2024-SWP-009(VAR) | * | 7 | 1 |
| | | ILLINOIS | CONTRACT NO. 62X91 | |
| KANE & MCHENRY | | | | |

D-91-082-25

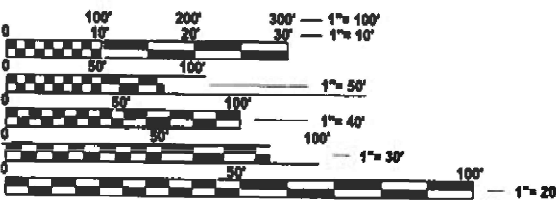


LOCATION OF SECTION INDICATED THUS: - [shaded box]

FOR INDEX OF SHEETS, SEE SHEET NO. 2

**PROPOSED
HIGHWAY PLANS**
**VARIOUS ROUTES
SECTION 2024-SWP-009(VAR)
ARTERIAL HIGHWAY CLEANING (SWEEPING)
VARIOUS COUNTY
C-91-117-25**

LOCATION MAPS - SEE INDEX OF SHEETS



FULL SIZE PLANS HAVE BEEN PREPARED USING STANDARD ENGINEERING SCALES. REDUCED SIZED PLANS WILL NOT CONFORM TO STANDARD SCALES. IN MAKING MEASUREMENTS ON REDUCED PLANS, THE ABOVE SCALES MAY BE USED.

J.U.L.I.E.
JOINT UTILITY LOCATION INFORMATION FOR EXCAVATION
1-800-892-0123
OR 811

PROJECT ENGINEER: OSCAR OLIVEROS (847) 705-4548
PROJECT MANAGER: JACEK EJMONT (847) 705-4641

CONTRACT NO. 62X91

STATE OF ILLINOIS
DEPARTMENT OF TRANSPORTATION

SUBMITTED February 19, 2025

January 31, 2025

January 31, 2025

DIRECTOR OF HIGHWAYS PROJECT IMPLEMENTATION

PRINTED BY THE AUTHORITY
OF THE STATE OF ILLINOIS

INDEX OF SHEETS

- 1. TITLE SHEET
- 2. INDEX OF SHEETS
APPLICABLE STATE STANDARDS
- 3. SUMMARY OF QUANTITIES
GENERAL NOTES
- 4. ARTERIAL TYPICAL SECTIONS
- 5. MCHENRY COUNTY CLEANING LOCATION MAP
- 6. KANE COUNTY CLEANING LOCATION MAP
- 7. TRAFFIC CONTROL AND PROTECTION FOR SIDE ROADS,
INTERSECTIONS AND DRIVEWAYS (TC-10)

STATE STANDARDS

- 701001-02 OFF-RD OPERATIONS, 2L, 2W, MORE THAN 15' (4.5 m) AWAY
- 701006-05 OFF-RD OPERATIONS, 2L, 2W, 15' (4.5 m) TO 24" (600 mm) FROM PAVEMENT EDGE
- 701011-04 OFF-RD MOVING OPERATIONS 2L, 2W, DAY ONLY
- 701301-04 LANE CLOSURE, 2L, 2W, SHORT TIME OPERATIONS
- 701311-03 LANE CLOSURE 2L, 2W MOVING OPERATIONS DAY ONLY
- 701411-09 LANE CLOSURE, MULTILANE, AT ENTRANCE OR EXIT RAMP, FOR SPEEDS ≥ 45 MPH
- 701426-09 LANE CLOSURE, MULTILANE, INTERMITTENT OR MOVING OPER., FOR SPEEDS ≥ 45 MPH
- 701427-05 LANE CLOSURE, MULTILANE, INTERMITTENT OR MOVING OPER., FOR SPEEDS ≤ 40 MPH
- 701428-01 TRAFFIC CONTROL SETUP AND REMOVAL FREEWAY/EXPRESSWAY
- 701901-10 TRAFFIC CONTROL DEVICES

MODEL: Index of Sheets and State Standards [Sheet]
FILE NAME: c:\p\work\pwt\illinois.gov_jacek.ejmont@illinois.gov\1062305D108225-shl-gennote.dgn

| | | | | | | | | | | | | |
|--|--------------------------|------------|-----------|---|---|---------|-------------|--------------------|-------------------|-----------------------------|--------------|-----------|
| | USER NAME = jacek.ejmont | DESIGNED - | REVISED - | STATE OF ILLINOIS DEPARTMENT OF TRANSPORTATION | INDEX OF SHEETS APPLICABLE STATE STANDARDS | | | F.A. RTE. | SECTION | COUNTY | TOTAL SHEETS | SHEET NO. |
| | | DRAWN - | REVISED - | | | | | VAR | 2024-SWP-009(VAR) | * | 7 | 2 |
| | | CHECKED - | REVISED - | | | | | CONTRACT NO. 62X91 | | | | |
| | PLOT DATE = 12/13/2024 | DATE - | REVISED - | | SCALE: | SHEET 1 | OF 2 SHEETS | STA. | TO STA. | ILLINOIS FED. AID PROJECT | | |

MODEL: SOQ and General Notes (Sheet)
FILE NAME: c:\pw_work\pwtdot\illinois.gov\jacek.ejmont@illinois.gov\1062305D\108225-shl-gennote.dgn

SUMMARY OF QUANTITIES

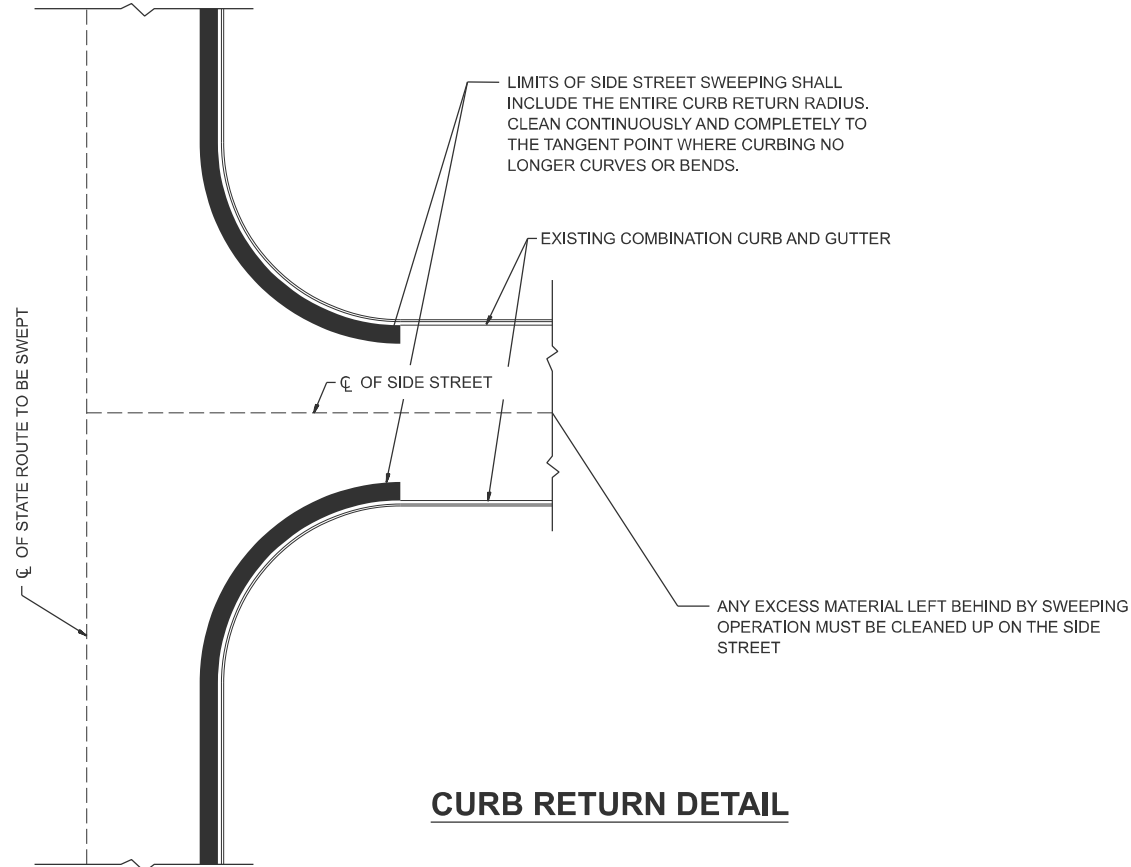
| CODE NO. | ITEM | UNIT | URBAN | 100 % STATE 0044 |
|----------|------------------------------|------|------------------|---------------------|
| | | | TOTAL QUANTITIES | ARTERIAL |
| Z0010617 | SUPPLEMENTAL SWEEPING | MILE | 100 | 100 |
| X0330600 | FULL ARTERIAL CLEANING CYCLE | EACH | 5 | 5 |

NOTES:

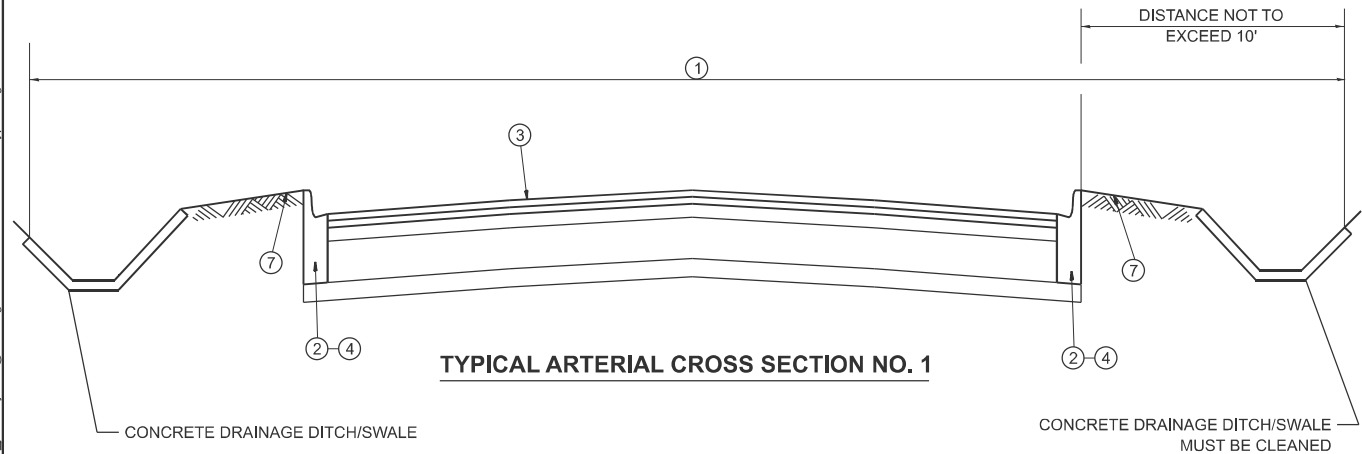
1. THE CONTRACTOR IS EXPECTED TO COMPLETE TWO CYCLES PER CALENDAR YEAR. THE SCHEDULE MAY VARY AS DIRECTED BY THE ENGINEER.
2. ARTERIAL CLEANING CYCLE SCHEDULE WILL BE COORDINATED DURING THE PRE-CONSTRUCTION MEETING. THE CONTRACTOR SHALL NOT START CLEANING CYCLES BEFORE THE DATES SCHEDULED WITHOUT WRITTEN AUTHORIZATION FROM THE ENGINEER.
3. NO DAILY CONTRACTOR WORK REQUESTS / SCHEDULING SHALL BE AUTHORIZED OR APPROVED TO START WHEN IT IS DETERMINED BY THE ENGINEER THAT WEATHER CONDITIONS WILL BE UNFAVORABLE. APPROVAL OF ALL DAILY CONTRACTOR WORK SCHEDULE REQUEST SHALL BE SOLELY DETERMINED BY THE ENGINEER.
4. ALL LANE AND SHOULDER CLOSURES SHALL BE IMMEDIATELY REMOVED DURING ALL ADVERSE WEATHER CONDITIONS WITHOUT EXCEPTION, INCLUDING BUT NOT LIMITED TO RAIN, WET ROAD SURFACE (SPRAY FROM TIRES), MIST, DRIZZLE, SLEET, SNOW, FOG AND ANY OTHER CIRCUMSTANCE DETERMINED UNSAFE BY THE ENGINEER. THE CONTRACTOR SHALL IMPLEMENT THIS CONTRACT REQUIREMENT IMMEDIATELY WITHOUT WAITING FOR DEPARTMENT INSTRUCTIONS.
5. SWEEPING WILL NOT PROCEED IF TEMPERATURES ARE FORECASTED BY THE DEPARTMENT'S CONSULTING METEOROLOGISTS TO DROP BELOW 32°F. ALL SHOULDER AND CURB LINES MUST BE FREE OF ANY EXISTING SNOW AND/OR ICE. DRY SWEEPING SHALL BE ALLOWED ONLY IF IT IS CONSIDERED AN EMERGENCY, IMMEDIATE HAZARD, OR ANY WORK AS DESIGNATED BY THE DEPARTMENT THAT REQUIRES FIRST PRIORITY CORRECTIVE ACTION.
6. NO WORK WILL BE ALLOWED DURING THE FOLLOWING LEGAL HOLIDAYS AS IN ACCORDINANCE WITH ARTICLE 107.09 OR AS PER DISTRICT 1 BUREAU OF TRAFFIC RESTRICTIONS UNLESS IT IS CONSIDERED AN EMERGENCY, IMMEDIATE HAZARD OR ANY WORK AS DESIGNATED BY THE DEPARTMENT THAT REQUIRES FIRST PRIORITY CORRECTIVE ACTION:

NEW YEAR'S HOLIDAY
EASTER HOLIDAY
MEMORIAL DAY HOLIDAY
INDEPENDENCE DAY HOLIDAY
THANKSGIVING HOLIDAY
CHRISTMAS

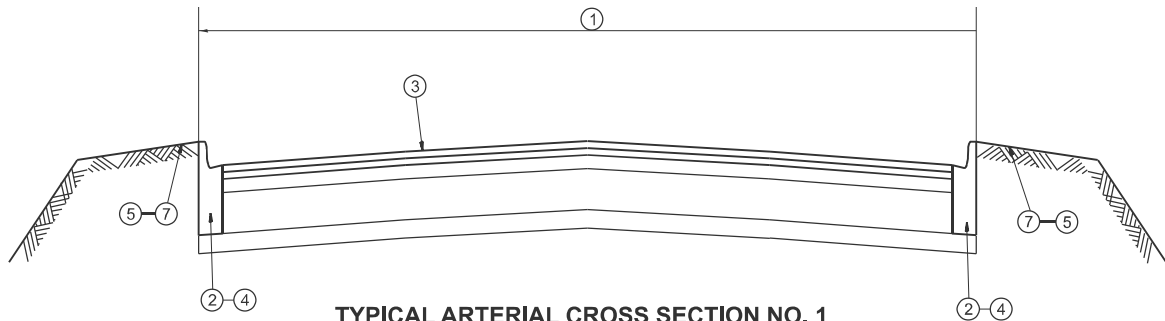
| | | | | | | | | | | | | |
|--|--------------------------|------------|-----------|---|--|---------|-------------|--------------------|-------------------|---------------------------|--------------|-----------|
| | USER NAME = jacek.ejmont | DESIGNED - | REVISED - | STATE OF ILLINOIS DEPARTMENT OF TRANSPORTATION | SUMMARY OF QUANTITIES GENERAL NOTES | | | F.A. RTE. | SECTION | COUNTY | TOTAL SHEETS | SHEET NO. |
| | | DRAWN - | REVISED - | | | | | VAR | 2024-SWP-009(VAR) | * | 7 | 3 |
| | | CHECKED - | REVISED - | | | | | CONTRACT NO. 62X91 | | | | |
| | PLOT DATE = 12/20/2024 | DATE - | REVISED - | | SCALE: | SHEET 2 | OF 2 SHEETS | STA. | TO STA. | ILLINOIS FED. AID PROJECT | | |



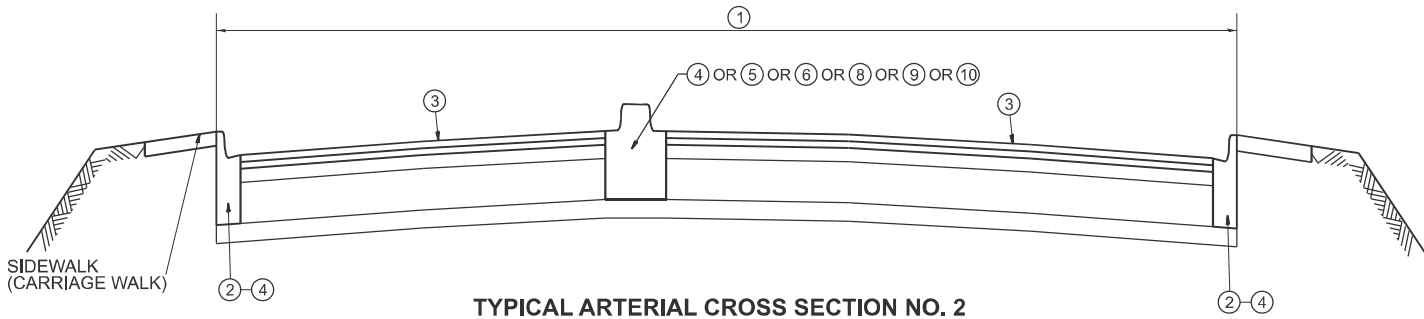
CURB RETURN DETAIL



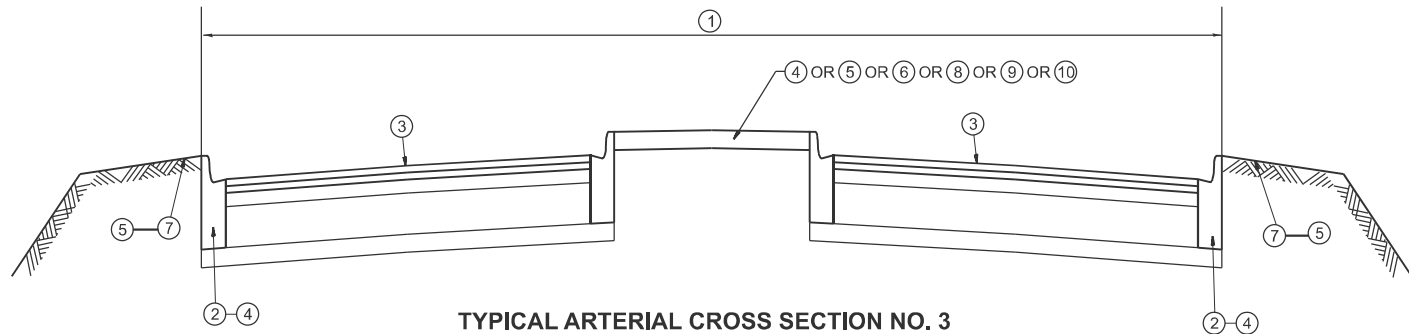
TYPICAL ARTERIAL CROSS SECTION NO. 1



TYPICAL ARTERIAL CROSS SECTION NO. 2



TYPICAL ARTERIAL CROSS SECTION NO. 3



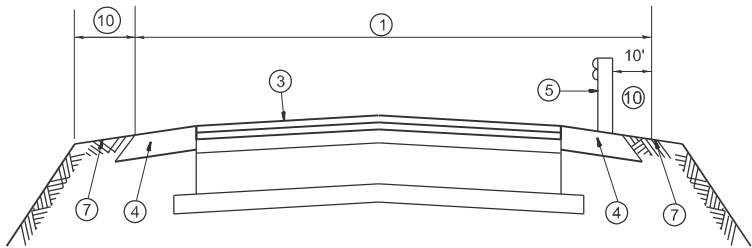
TYPICAL ARTERIAL CROSS SECTION NO. 4

LEGEND

- 1) AREA OF ROADWAY CLEANING AND RUBBISH REMOVAL
- 2) CURB AND GUTTER
- 3) TRAVELED ROADWAY
- 4) STABILIZED SHOULDER OR MEDIAN
- 5) STEEL PLATE GUARDRAIL (SEE NOTE 1)
- 6) CONCRETE BARRIER
- 7) NON STABILIZED AREA
- 8) RAISED CONCRETE MEDIAN
- 9) ALL EXISTING TURF MEDIANS
- 10) LITTER PICKING

NOTES:

- ALL LOCATIONS OF MEDIANS AND GUARDRAILS SHALL BE CLEANED OF ALL DEBRIS AND RUBISH INCLUDING BUT NOT LIMITED TO DIRT, WEEDS, SAND, ROCKS, GRAVEL, CONCRETE, WOOD, LIMBS, LEAVES, GARBAGE & ANIMAL CARCASSES BY HAND LABORING UNDERNEATH AND 10 FEET BEHIND GUARDRAIL INCLUDING STABILIZED AND NON STABILIZED AREAS. THIS WORK SHALL BE CONSIDERED AS INCLUDED IN THE CONTRACT UNIT PRICE FOR ALL FULL CLEANING CYCLES.
- SLOPE WALLS UNDER BRIDGES ARE NOT INCLUDED IN AREAS TO BE CLEANED.
- ALL ARTERIAL INTERCHANGES, INTERSECTIONS, RAMPS AND CROSSOVERS SHALL BE CLEANED AND LITTER PICKED.
- ALL PAVED DITCHES AND SPILLWAYS WITHIN 10' OF STABILIZED BASE SHALL BE CLEANED



TYPICAL ARTERIAL CROSS SECTION NO. 4

MODEL: Arterial Typical Section (Sheet)
FILE NAME: c:\p\work\pvt\illinois.gov_jacek.ejmont\illinois.gov\1062305D\108225-shk-typical.dgn

| | | |
|--------------------------|------------|-----------|
| USER NAME = jacek.ejmont | DESIGNED - | REVISED - |
| | DRAWN - | REVISED - |
| | CHECKED - | REVISED - |
| PLOT DATE = 12/13/2024 | DATE - | REVISED - |

STATE OF ILLINOIS
DEPARTMENT OF TRANSPORTATION

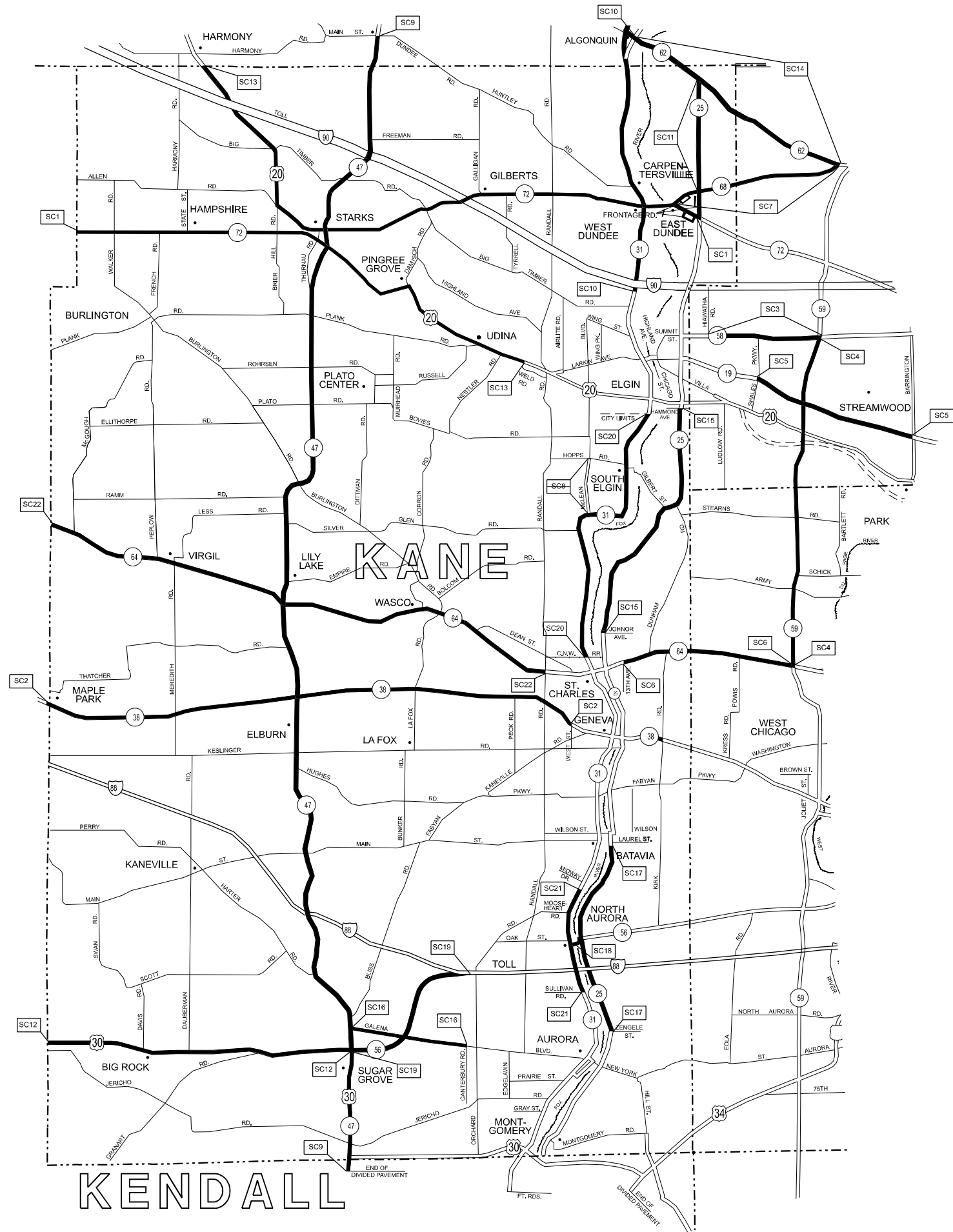
TYPICAL ARTERIAL CROSS SECTION
AND CURB RETURN DETAIL

SCALE: SHEET 1 OF 3 SHEETS STA. TO STA.

| F.A. RTE. | SECTION | COUNTY | TOTAL SHEETS | SHEET NO. |
|---------------------------|-------------------|--------|--------------|-----------|
| VAR | 2024-SWP-009(VAR) | * | 7 | 4 |
| CONTRACT NO. 62X91 | | | | |
| ILLINOIS FED. AID PROJECT | | | | |

KANE & MCHENRY

MODEL: Kane County (Sheet)
FILE NAME: c:\p\work\kco\illinois.gov\1062305D\108225-shd-details.dgn



| TEAM SECTION | KEY LOCATIONS |
|--------------|---------------|
| ST. CHARLES | SC1 - SC22 |

DISTRICT NO. 1

- STATE HIGHWAYS & EXPRESSWAYS
WITHIN STATE JURISDICTION
(EXCEPT TOLLWAYS)
- STATE HIGHWAYS & EXPRESSWAYS
TO BE CLEANED
- FUTURE HIGHWAYS
- VARIOUS AGENCIES HIGHWAYS

| | | |
|--------------------------|------------|-----------|
| USER NAME = jacek.ejmont | DESIGNED - | REVISED - |
| | DRAWN - | REVISED - |
| | CHECKED - | REVISED - |
| PLOT DATE = 12/20/2024 | DATE - | REVISED - |

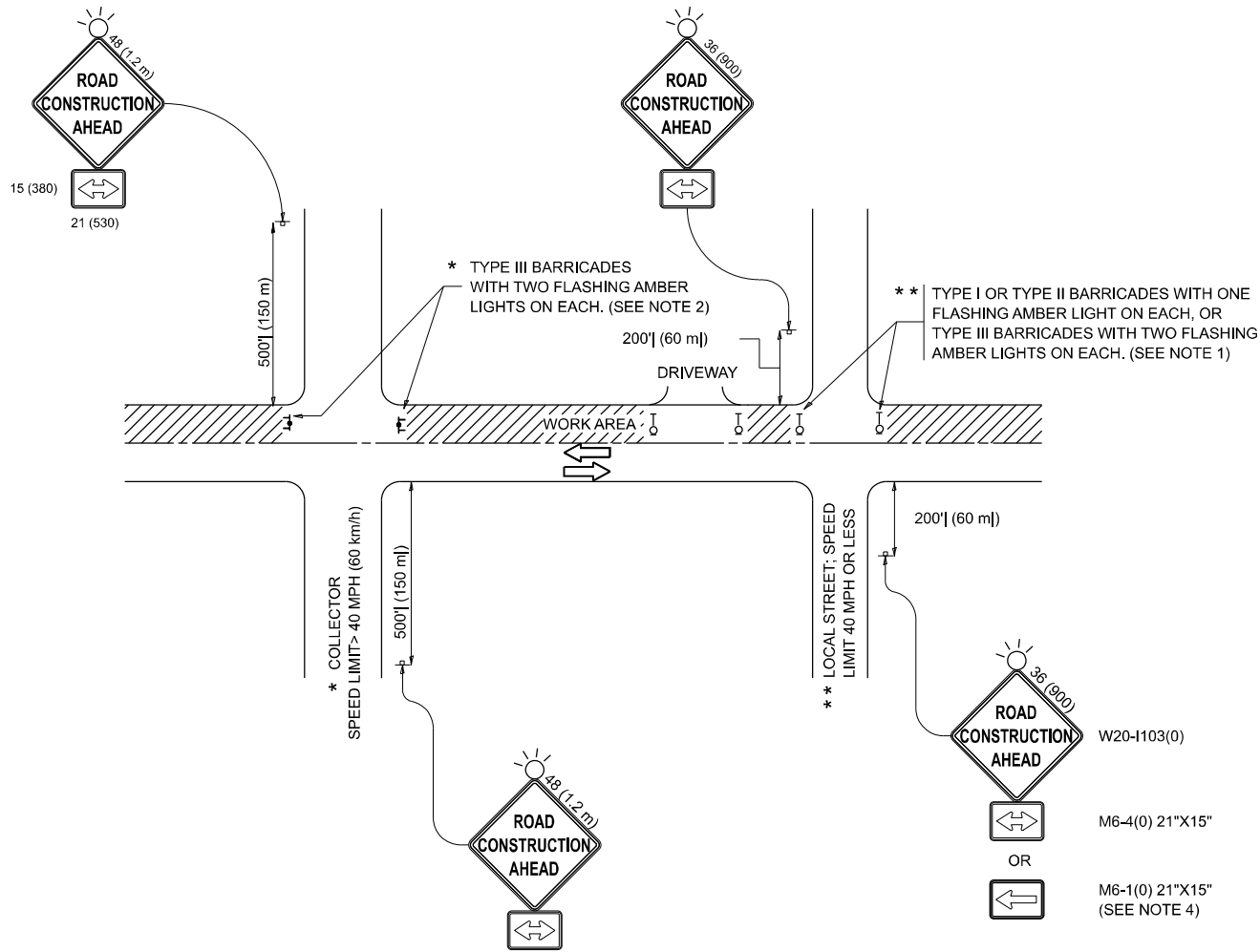
STATE OF ILLINOIS DEPARTMENT OF TRANSPORTATION

KANE COUNTY ARTERIAL CLEANING LOCATION MAP

SCALE: SHEET 2 OF 2 SHEETS STA. TO STA.

| F.A. RTE. | SECTION | COUNTY | TOTAL SHEETS | SHEET NO. |
|---------------------------|-------------------|--------|--------------|-----------|
| VAR | 2024-SWP-009(VAR) | * | 7 | 6 |
| CONTRACT NO. 62X91 | | | | |
| ILLINOIS FED. AID PROJECT | | | | |

MODEL: TC 10-1 [Sheet]
FILE NAME: c:\p\work\pwork\illinois.gov\jacek.ejmont@illinois.gov\d1062305D108225-shh-D1asSids.dgn



NOTES:

1. SIDE ROAD WITH A SPEED LIMIT OF 40 MPH (60 km/h) OR LESS AS SHOWN ON THE DRAWING AND AS DIRECTED BY THE ENGINEER:

a) ONE "ROAD CONSTRUCTION AHEAD" SIGN 36 x 36 (900x900) WITH A FLASHER MOUNTED ON IT APPROXIMATELY 200' (60 m) IN ADVANCE OF THE MAIN ROUTE.

b) THE CLOSED PORTION OF THE MAIN ROUTE SHALL BE PROTECTED BY BLOCKING WITH TYPE I, TYPE II OR TYPE III BARRICADES, 1/3 OF THE CROSS SECTION OF THE CLOSED PORTION.
2. SIDE ROAD WITH A SPEED LIMIT GREATER THAN 40 MPH (60 km/h) AS SHOWN ON THE DRAWING AND AS DIRECTED BY THE ENGINEER:

a) ONE "ROAD CONSTRUCTION AHEAD" SIGN 48 x 48 (1.2 m x 1.2 m) WITH A FLASHER MOUNTED ON IT APPROXIMATELY 500' (150 m) IN ADVANCE OF THE MAIN ROUTE.

b) THE CLOSED PORTION OF THE MAIN ROUTE SHALL BE PROTECTED BY BLOCKING WITH TYPE III BARRICADES, 1/2 OF THE CROSS SECTION OF THE CLOSED PORTION.
3. CONES MAY BE SUBSTITUTED FOR BARRICADES OR DRUMS AT HALF THE SPACING DURING DAY OPERATIONS. CONES SHALL BE A MINIMUM OF 28 (710) IN HEIGHT.

4. WHEN THE SIDE ROAD LIES BETWEEN THE BEGINNING OF THE MAINLINE SIGNING AND THE WORK ZONE, A SINGLE HEADED ARROW (M6-1) SHALL BE USED IN LIEU OF THE DOUBLE HEADED ARROW (M6-4).
5. WHEN WORK IS BEING PERFORMED ON A SIDE ROAD OR DRIVEWAY, FOLLOW THE APPLICABLE STANDARD(S). THE DIRECTIONAL ARROW (M6-1 OR M6-4) SHALL BE COVERED OR REMOVED WHEN NO LONGER CONSISTENT WITH THE TRAFFIC CONTROL SET-UP.

6. ADVANCE WARNING SIGNS ARE TO BE OMITTED ON DRIVEWAYS UNLESS OTHERWISE SPECIFIED IN THE PLANS OR BY THE ENGINEER.

7. THE TRAFFIC CONTROL AND PROTECTION FOR SIDE ROADS, INTERSECTIONS, AND DRIVEWAYS SHALL BE INCLUDED IN THE COST OF SPECIFIED TRAFFIC CONTROL STANDARDS OR ITEMS.

All dimensions are in inches (millimeters) unless otherwise shown.

| | | | | | | | | | | | | | |
|--|--------------------------|-------------------|---------------------------------|---|--|-------|----|--------|-----------|-------------------|---------------------------|--------------|-----------|
| | USER NAME = jacek.ejmont | DESIGNED - L.H.A. | REVISED - T. RAMMACHER 01-06-00 | STATE OF ILLINOIS DEPARTMENT OF TRANSPORTATION | TRAFFIC CONTROL AND PROTECTION FOR SIDE ROADS, INTERSECTIONS, AND DRIVEWAYS | | | | F.A. RTE. | SECTION | COUNTY | TOTAL SHEETS | SHEET NO. |
| | | DRAWN - | REVISED - A. SCHUETZE 07-01-13 | | | | | | VAR | 2024-SWP-009(VAR) | * | 7 | 7 |
| | | CHECKED - | REVISED - A. SCHUETZE 09-15-06 | | | | | | TC-10 | | | | |
| | PLOT DATE = 12/20/2024 | DATE - 06-89 | REVISED - D. SENDERAK 05-03-24 | | SCALE: | SHEET | OF | SHEETS | STA. | TO STA. | ILLINOIS FED. AID PROJECT | | |
| | | | | | | | | | | | | | |