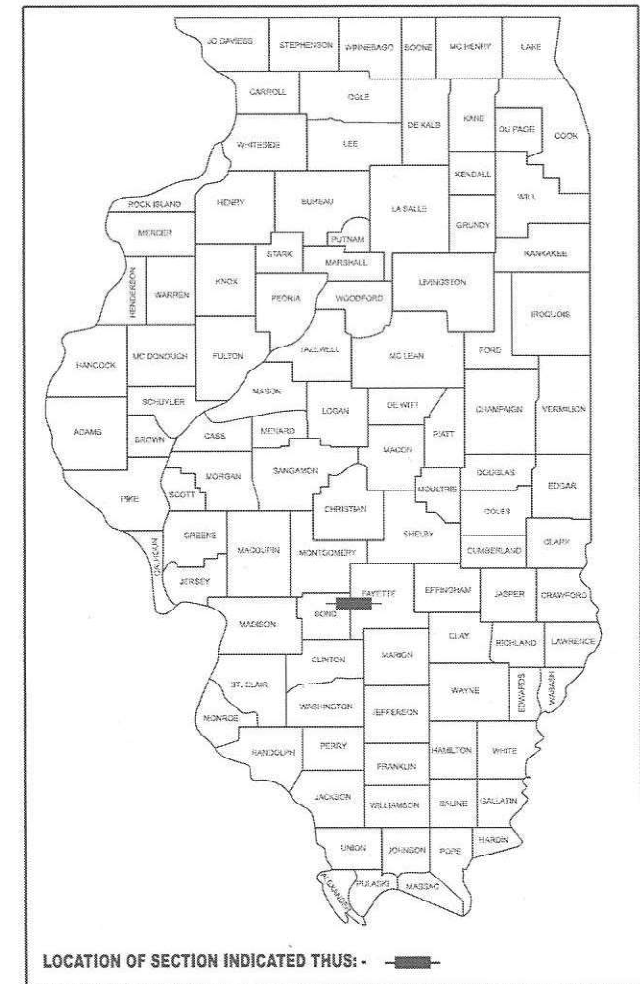


STATE OF ILLINOIS
DEPARTMENT OF TRANSPORTATION

FAI RTE.	SECTION	COUNTY	TOTAL SHEETS	SHEET NO.
70	D7 BRIDGE REPAIRS 2025-12	FAYETTE	5	1
		ILLINOIS	CONTRACT NO. 74D33	

D-97-072-24

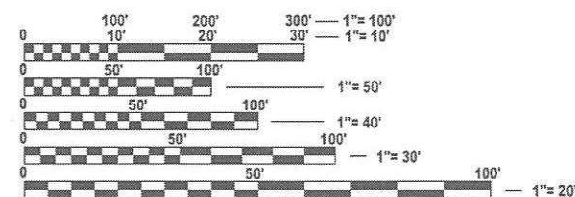


FOR INDEX OF SHEETS, SEE SHEET NO. 2

PROPOSED HIGHWAY PLANS

FAI ROUTE 70
SECTION D7 BRIDGE REPAIRS 2025-12
PROJECT
BRIDGE REPAIRS
FAYETTE COUNTY

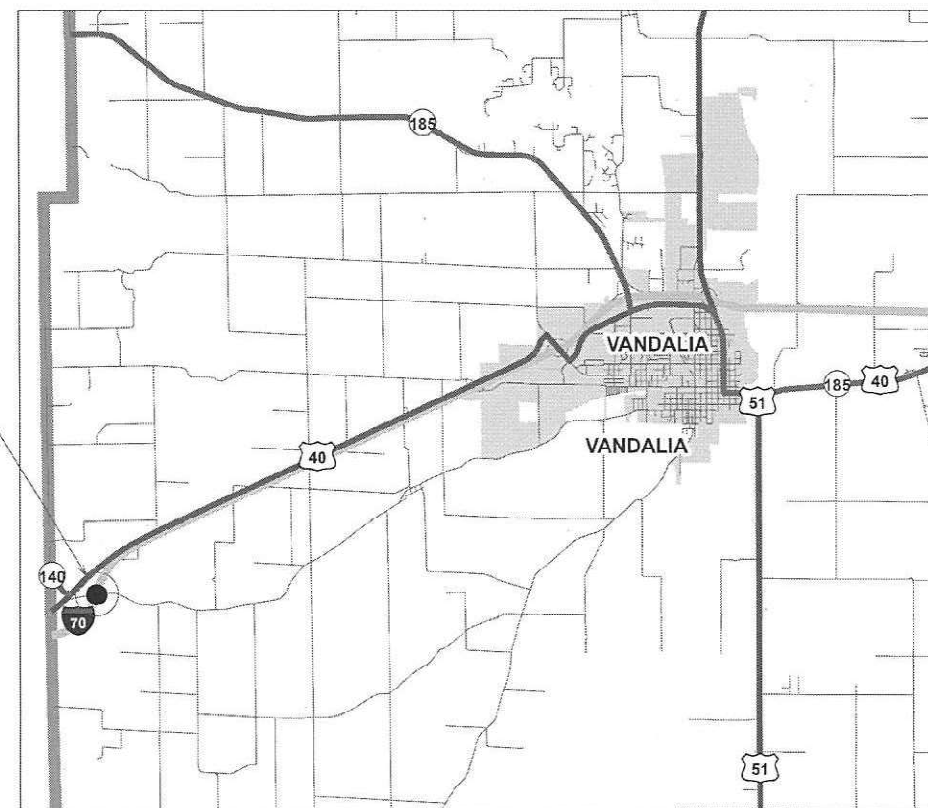
C-97-107-24



FULL SIZE PLANS HAVE BEEN PREPARED USING STANDARD
ENGINEERING SCALES. REDUCED SIZED PLANS WILL NOT
CONFORM TO STANDARD SCALES. IN MAKING MEASUREMENTS
ON REDUCED PLANS, THE ABOVE SCALES MAY BE USED.

J.U.L.I.E.
JOINT UTILITY LOCATION INFORMATION FOR EXCAVATION
1-800-892-0123
OR 811

PROJECT LOCATION
SN 026-0102 & SN 026-0103



GROSS LENGTH = 1320 FT. = 0.25 MILE
NET LENGTH = 1320 FT. = 0.25 MILE

PROJECT ENGINEER: MATT BOWER (217) 342-8359
PROJECT MANAGER: REID TORBECK (217) 342-8257

CONTRACT NO. 74D33

STATE OF ILLINOIS
DEPARTMENT OF TRANSPORTATION

SUBMITTED SEPTEMBER 25, 2024
Jeffrey P. Meyer, Jr. REGIONAL ENGINEER

December 6, 2024
Scott A. Etkin
ENGINEER OF DESIGN AND ENVIRONMENT
December 6, 2024
Gemma J. Quinn
DIRECTOR OF HIGHWAYS PROJECT IMPLEMENTATION 13

PRINTED BY THE AUTHORITY
OF THE STATE OF ILLINOIS

MODEL: Untitled [Sheet]
FILE NAME: c:\pw_work\pilot\stefanmkd1016255\0714\033-alt-gennotes.dgn

INDEX OF SHEETS

1	COVER
2	INDEX, STANDARDS AND GENERAL NOTES
3	SUMMARY OF QUANTITIES
4-5	STRUCTURE PLANS

GENERAL NOTES

THIS PROJECT IS LOCATED OVER ILL 140 AND THE CSXT RAILROAD 0,8 MILES EAST OF THE BOND COUNTY LINE.
THE WORK ON THIS PROJECT CONSISTS OF REPAIRS TO THE STIFFENER CONECTIONS ON THE STEEL BRIDGE BEAMS.

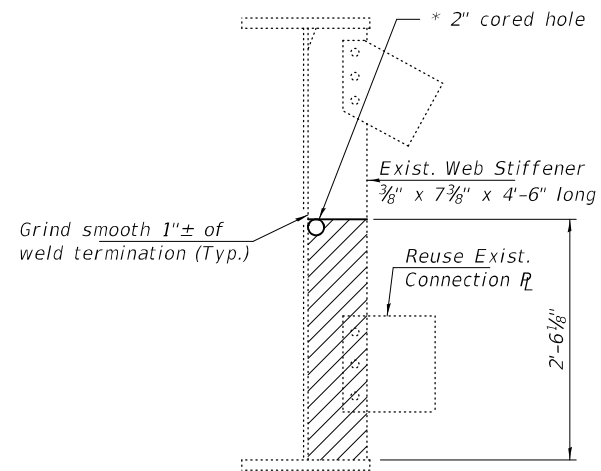
THE FOLLOWING STANDARDS ARE A PART OF THESE PLANS AND ARE INCLUDED FOLLOWING SHEET NUMBER 5

STD NO.	DESCRIPTION
000001-08	STANDARD SYMBOLS, ABBREVIATIONS AND PATTERNS
001001-02	AREAS OF REINFORCEMENT BARS
001006	DECIMAL OF AN INCH AND A FOOT
701001-02	OFF ROAD OPERATIONS, 2L 2W 15' TO 24" FROM PAVEMENT EDGE
701006-05	OFF ROAD MOVING OPERATIONS, 2L 2W DAY ONLY
701101-05	OFF ROAD MOVING OPERATIONS, MULTILANE, 15' TO 24" FROM PAVEMENT EDGE
701106-02	OFF ROAD OPERATIONS, MULTILANE, MORE THAN 15' AWAY
701201-05	LANE CLOSURE, 2L 2W, DAY ONLY, >45 MPH
701400-12	APPROACH TO LANE CLOSURE FREEWAY EXPRESSWAY
701401-13	LANE CLOSURE FREEWAY EXPRESSWAY
701901-10	TRAFFIC CONTROL DEVICES

REV - MS

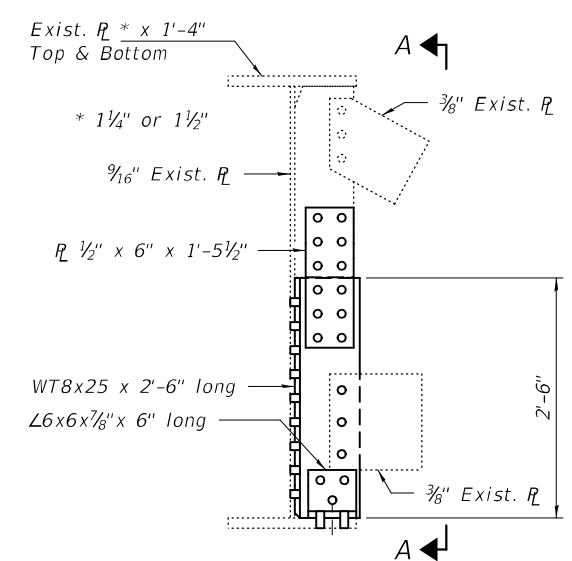
	USER NAME = reid.torbeck	DESIGNED -	REVISED -	STATE OF ILLINOIS DEPARTMENT OF TRANSPORTATION	INDEX, STANDARDS AND GENERAL NOTES			F.A.1 RTE.	SECTION	COUNTY	TOTAL SHEETS	SHEET NO.
		DRAWN -	REVISED -					70	07 BRIDGE REPAIRS 2025-12	FAYETTE	5	2
		CHECKED -	REVISED -					CONTRACT NO. 74D33				
	PLOT DATE = 9/25/2024	DATE -	REVISED -		SCALE:	SHEET	OF	SHEETS	STA.	TO STA.	ILLINOIS FED. AID PROJECT	

[illegible]

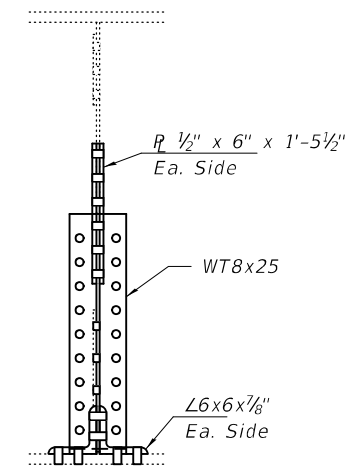


REMOVAL DETAIL
Hatched area indicates Structural Steel Removal.

* Core 2" hole so that it catches web to stiffener weld. Then cut into the hole without damaging web when cutting stiffener horizontally and vertically.

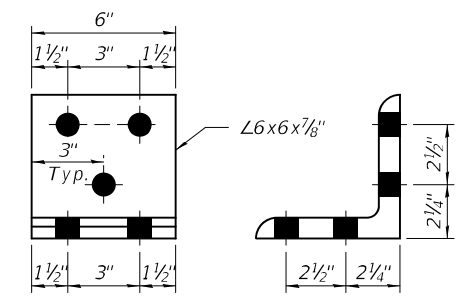


SECTION
(at stiffener)



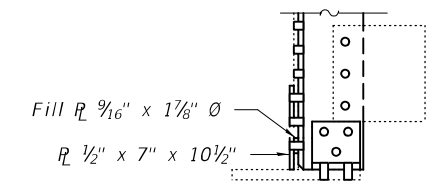
VIEW A-A

STIFFENER REPAIR
(260 Locations)

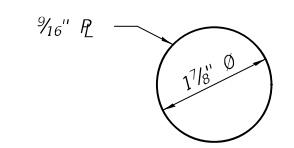


ANGLE
(520 Required)

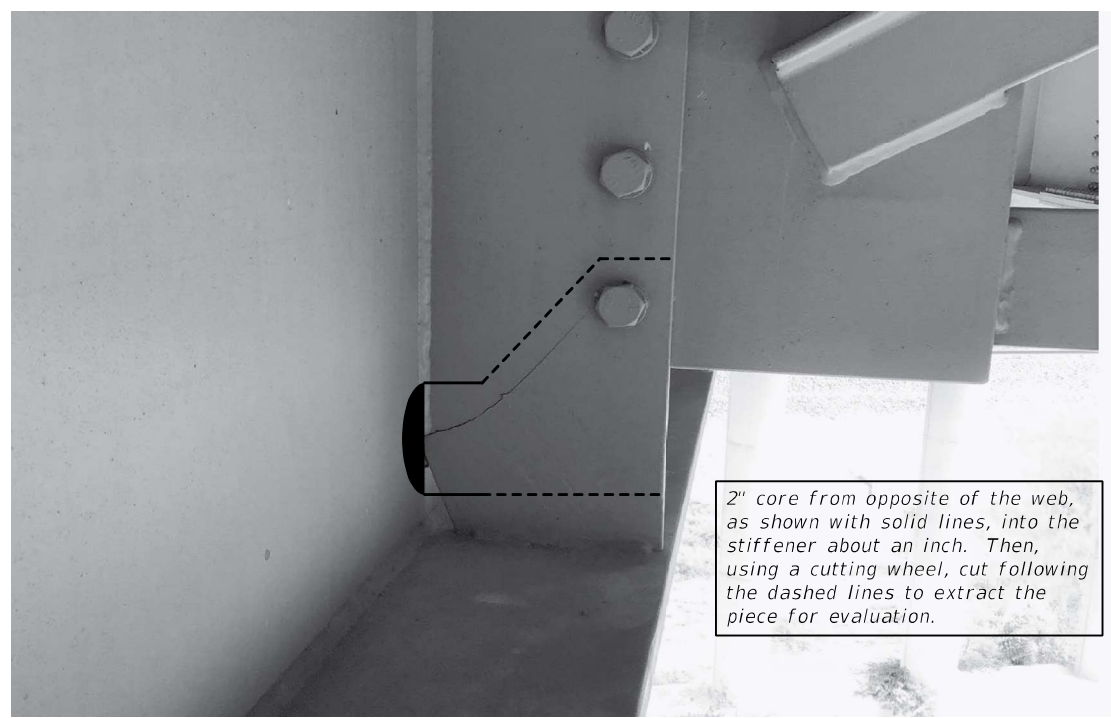
Note:
Use 7/8 inch Ø H.S. bolts for the clip angles.



SECTION AT EXTRACTION LOCATIONS
Labeling of additional repair plates only. See Stiffener Repair for remaining steel details.
(4 locations)



FILL PLATE
(4 Required)



EXTRACTION DETAIL
(Match mark each piece with location number)

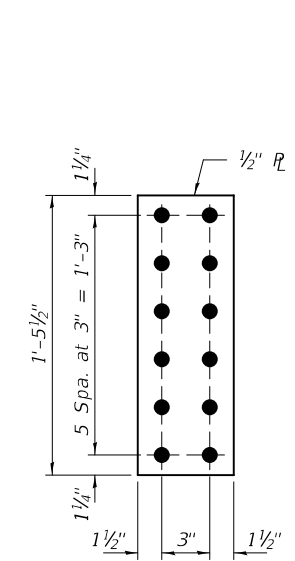
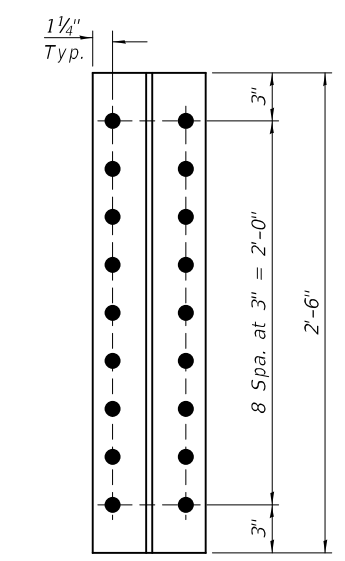


PLATE
(520 Required)



WT8x25
(260 Required)

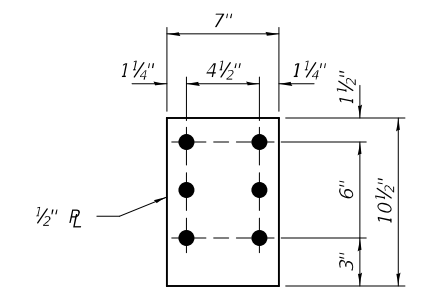


PLATE
(4 Required)

- BOLT HOLE LEGEND**
- - Field drill holes in new steel using existing steel as template.
 - - Shop drill holes in new steel. Use new steel as template to field drill holes in existing steel.