

F.A.I. RTE.	SECTION	COUNTY	TOTAL SHEETS	SHEET NO.
72	(75-4WS)WIM	PIKE	23	1
ILLINOIS			CONTRACT NO. 72736	

INDEX OF SHEETS	
1	COVER SHEET
2	HIGHWAY STANDARD AND GENERAL NOTES
3-4	SUMMARY OF QUANTITIES
5	TYPICAL SECTION
6	SITE PLAN
7-9	ITS PLAN
10-21	WEIGH IN MOTION DETAILS
22	ELECTRIC SERVICE METER DETAIL
23	DISTRICT 6 DETAILS

STATE OF ILLINOIS  
DEPARTMENT OF TRANSPORTATION

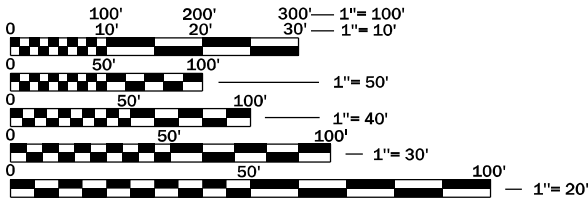
PROPOSED  
HIGHWAY PLANS

FAI ROUTE 72 (I-72)  
SECTION 75-4WS  
PROJECT NHPP-E2CV(129)  
VIRTUAL WEIGH STATION  
PIKE COUNTY  
C-96-052-24

DESIGN DESIGNATION  
INTERSTATE

TRAFFIC DATA  
EXISTING AADT: 8,850 (2023)  
% PV = 61  
% SU = 4  
% MU = 35

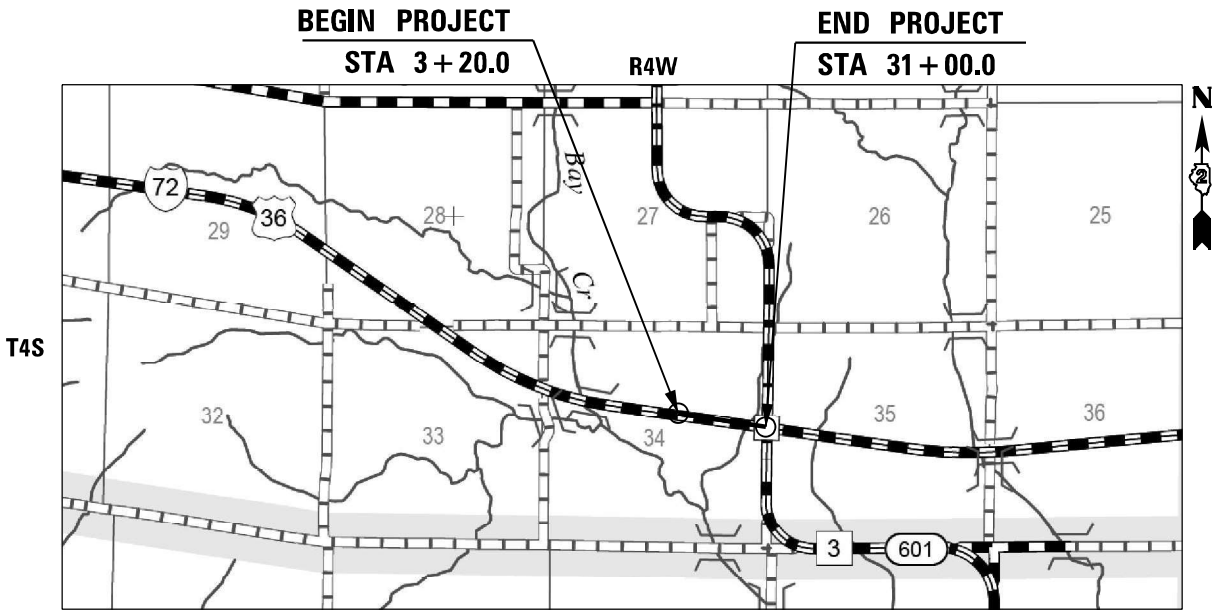
DESIGN SPEED: 70 MPH  
POSTED SPEED: 70 MPH



FULL SIZE PLANS HAVE BEEN PREPARED USING STANDARD ENGINEERING SCALES. REDUCED SIZED PLANS WILL NOT CONFORM TO STANDARD SCALES. IN MAKING MEASUREMENTS ON REDUCED PLANS, THE ABOVE SCALES MAY BE USED.

J.U.L.I.E.  
JOINT UTILITY LOCATION INFORMATION FOR EXCAVATION  
1-800-892-0123  
OR 811

PROJECT ENGINEER: KEITH DONOVAN (217) 782-8414  
CONTRACT NO. 72736



GROSS LENGTH = 2,780 FT. = 0.527 MILES  
NET LENGTH = 300 FT. = 0.057 MILES

TRANSMART LLC  
DANIEL J. MEIER, P.E.  
\*062-068291  
DATE: 11-13-2024  
SIGNATURE AND SEAL  
APPLY TO DRAWINGS:  
1-4, 7-13, 15-21  
EXPIRATION DATE: 11-30-2025

TRANSMART LLC  
KYLE J. CHAMBERLAIN, P.E.  
\*062-061192  
DATE: 11-13-2024  
SIGNATURE AND SEAL  
APPLY TO DRAWINGS:  
5-6, 23  
EXPIRATION DATE: 11-30-2025

TRANSMART LLC  
WILLIAM D. STERMER, P.E.  
\*062-060936  
DATE: 11-13-2024  
SIGNATURE AND SEAL  
APPLY TO DRAWINGS:  
14, 22  
EXPIRATION DATE: 11-30-2025



PREPARED BY:  
**TranSmart**  
an **ATLAS** Company

STATE OF ILLINOIS  
DEPARTMENT OF TRANSPORTATION  
SUBMITTED November 14, 2024  
REGIONAL ENGINEER  
January 31, 2025  
ENGINEER OF DESIGN AND ENVIRONMENT  
January 31, 2025  
DIRECTOR OF HIGHWAYS PROJECT IMPLEMENTATION

PRINTED BY THE AUTHORITY  
OF THE STATE OF ILLINOIS

HIGHWAY STANDARDS

000001-08	STANDARD SYMBOLS, ABBREVIATIONS AND PATTERNS
001001-02	AREAS OF REINFORCEMENT BARS
001006	DECIMAL OF AN INCH AND OF A FOOT
420001-10	PAVEMENT JOINTS
420701-03	PAVEMENT WELDED WIRE REINFORCEMENT
442101-09	CLASS B PATCHES
601001-05	PIPE UNDERDRAIN
642001-03	SHOULDER RUMBLE STRIPS, 16"
701001-02	OFF-RD OPERATIONS, 2L, 2W, MORE THAN 15' AWAY
701006-05	OFF-RD OPERATIONS, 2L, 2W, 15' TO 24" FROM PAVEMENT EDGE
701101-05	OFF-RD OPERATIONS, MULTILANE, 15' TO 24' FROM PAVEMENT EDGE
701106-02	OFF-RD OPERATIONS, MULTILANE, MORE THAN 15' AWAY
701400-12	APPROACH TO LANE CLOSURE, FREEWAY/EXPRESSWAY
701401-13	LANE CLOSURE, FREEWAY/EXPRESSWAY
701426-09	LANE CLOSURE, MULTILANE, INTERMITTENT OR MOVING OPERATIONS FOR SPEEDS >=45 MPH
701901-10	TRAFFIC CONTROL DEVICES
780001-05	TYPICAL PAVEMENT MARKINGS
805001-01	ELECTRICAL SERVICE INSTALLATION DETAILS
814001-03	HANDHOLES


GENERAL NOTES


1. THE CONTRACTOR SHALL SEED ALL DISTRUBED AREAS WITHIN THE PROJECT LIMITS. SEEDING CLASS 2A SHALL BE USED ON FRONT SLOPES AND DITCH BOTTOMS. THIS WORK SHALL BE CONSIDERED AS INCLUDED IN THE COST OF THE CONTRACT.
2. THE CONTRACTOR SHALL NOTIFY THE DISTRICT 6 BUREAU OF OPERATIONS, (217) 785-5306, AT LEAST 72 HOURS IN ADVANCE OF BEGINNING WORK AND THREE WEEKS PRIOR TO IMPLEMENTING ANY TRAFFIC CONTROL.
3. CONDUIT, HANDHOLES, FOUNDATIONS, AND ALL OTHER ITS ELEMNTNS SHALL NOT BE PLACED IN THE DITCHLINE OR A DRAINAGE/WATER COLLECTION AREA.
4. WELDED WIRE REINFORCEMENT WILL NOT BE REQUIRED IN CONSTRUCTING THE CLASS B PATCHING, TYPE IV.

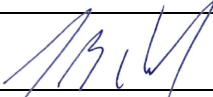
COMMITMENTS

NONE

STATE OF ILLINOIS  
DEPARTMENT OF TRANSPORTATION  
DIVISION OF HIGHWAYS  
DISTRICT 6

EXAMINED November 14 20 24  
  
ENGINEER OF OPERATIONS

EXAMINED November 14 20 24  
  
ENGINEER OF PROJECT IMPLEMENTATION

EXAMINED November 14 20 24  
  
ENGINEER OF PROGRAM DEVELOPMENT

REV - MS

MODEL Default  
FILE Name: 23 Projects0222 - IDOT PTB 208-53 Va-Va- PrairieProject-Work\W01 - I72 VWP\MCADD\CADD-Sheets\ID67736-shc-gen-note.dgn

<div><div>TranSmart</div><div>em</div><div>ATLAS</div><div>Company</div></div> <div>100 S. Wacker Drive Suite 400 Chicago, IL 60606</div>	USER NAME = dmler	DESIGNED - DJM	REVISED -	STATE OF ILLINOIS DEPARTMENT OF TRANSPORTATION	FAI ROUTE 72 (I-72) HIGHWAY STANDARDS & GENERAL NOTES	SCALE: NONE	SHEET 1	OF 1	SHEETS	STA.	TO STA.	F.A.I. RTE.	SECTION	COUNTY	TOTAL SHEETS	SHEET NO.
	DRAWN - DJM	REVISIED -										72	75-4WS	PIKE	23	2
	PLOT SCALE = 2,0000 ' / in.	CHECKED - REL	REVISED -									CONTRACT NO.72736				
	PLOT DATE = 11/12/2024	DATE - 11/13/2024	REVISED -									ILLINOIS FED. AID PROJECT				



MODEL: Default  
FILE NAME: S:\Projects\2122 - IDOT PTB 208-53 Var-Var PrairieProject Work\W01 - 172 W01M\CADD\CADD Sheets\B7735-sht-001.dgn

**TranSmart**  
an ATLAS Company

100 S. Wacker Drive  
Suite 400  
Chicago, IL 60606

USER NAME = dmeier	DESIGNED - DJM	REVISED -
	DRAWN - DJM	REVISED -
PLOT SCALE = 2.0000 ' / in.	CHECKED - REL	REVISED +
PLOT DATE = 11/12/2024	DATE - 11/13/2024	REVISED +

STATE OF ILLINOIS  
DEPARTMENT OF TRANSPORTATION

FAI ROUTE 72 (I-72) SUMMARY OF QUANTITIES				
SCALE: NONE	SHEET 1	OF 2	SHEETS	STA. TO STA.


F.A.I. RTE.	SECTION	COUNTY	TOTAL SHEETS	SHEET NO.
72	75-4WS	PIKE	23	3
CONTRACT NO. 72736				
		ILLINOIS	FED. AID PROJECT	

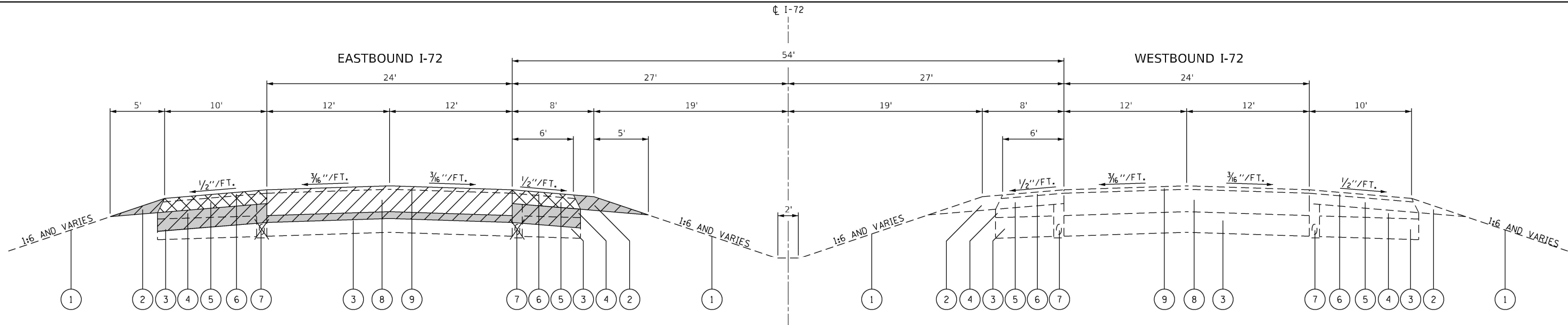
PPS #0-02117-6001

CODE NO.	ITEM	UNIT	TOTAL QUANTITY	CONST. CODE
				90% FED 10% STATE
				ROADWAY
				0044 RURAL
20201200	REMOVAL AND DISPOSAL OF UNSUITABLE MATERIAL	CU YD	305	305
35102000	AGGREGATE BASE COURSE, TYPE B 8"	SQ YD	534	534
44004250	PAVED SHOULDER REMOVAL	SQ YD	534	534
44200988	CLASS B PATCHES, TYPE IV, 11 INCH	SQ YD	800	800
44201299	DOWEL BARS 1 1/2"	EACH	360	360
44213200	SAW CUTS	FOOT	80	80
44213204	TIE BARS 3/4"	EACH	300	300
48102100	AGGREGATE WEDGE SHOULDER, TYPE B	TON	115	115
48300600	PORTLAND CEMENT CONCRETE SHOULDERS 11"	SQ YD	534	534
60108104	PIPE UNDERDRAINS, TYPE 1, 4"	FOOT	600	600
64200116	SHOULDER RUMBLE STRIPS, 16 INCH	FOOT	600	600
67000400	ENGINEER'S FIELD OFFICE, TYPE A	CAL MO	4	4
67100100	MOBILIZATION	L SUM	1	1
70100800	TRAFFIC CONTROL AND PROTECTION, STANDARD 701401	L SUM	1	1

\* = SPECIALTY ITEM

MODEL: Default  
FILE NAME: S:\Projects\1222 - IDOT PTB 208-53 Var-Var PrairieProject Work\W01 - 172 W01M\CADD\CADD Sheets\B7735-sht-0042.dgn

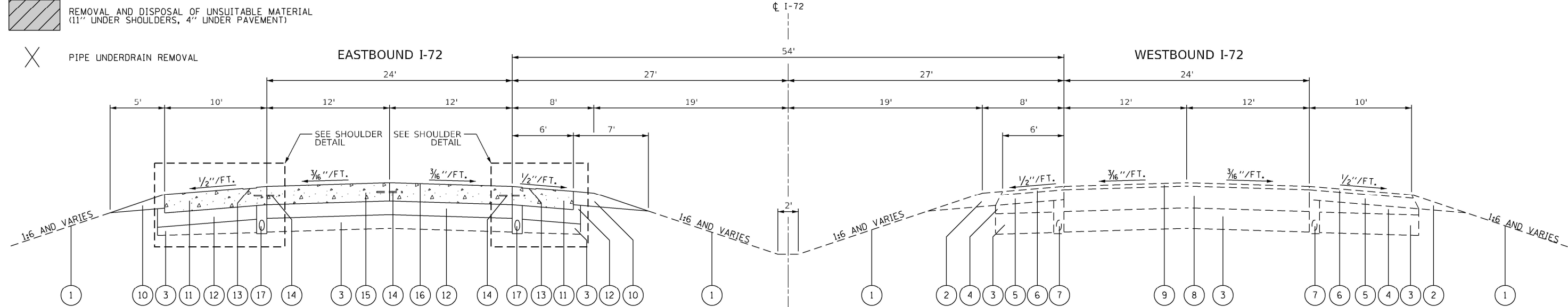
				PPS #0-02117-6001	
				CONST. CODE	
				90% FED 10% STATE	
				ROADWAY	
				0044	
				RURAL	
	CODE NO.	ITEM	UNIT	TOTAL QUANTITY	
	70107025	CHANGEABLE MESSAGE SIGN	CAL DA	14	14
*	78009005	MODIFIED URETHANE PAVEMENT MARKING = LINE 5"	FOOT	675	675
*	78011030	GROOVING FOR RECESSED PAVEMENT MARKING 6"	FOOT	675	675
	81028250	UNDERGROUND CONDUIT, GALVANIZED STEEL, 5" DIA.	FOOT	395	395
	81028750	UNDERGROUND CONDUIT, COILABLE NONMETALLIC CONDUIT, 2" DIA.	FOOT	2,982	2,982
	81400200	HEAVY-DUTY HANDHOLE	EACH	10	10
	81702120	ELECTRIC CABLE IN CONDUIT, 600V (XLP-TYPE USE) 1/C NO. 8	FOOT	3,019	3,019
	81702140	ELECTRIC CABLE IN CONDUIT, 600V (XLP-TYPE USE) 1/C NO. 4	FOOT	9,057	9,057
	X4202010	PROFILE DIAMOND GRINDING CONCRETE PAVEMENT	SQ YD	800	800
	X8050115	SERVICE INSTALLATION, TYPE A (MODIFIED)	EACH	1	1
	Z0026290	FURNISHING AND INSTALLING WEIGH-IN- MOTION COMPONENTS	L SUM	1	1
	Z0040530	PIPE UNDERDRAIN REMOVAL	FOOT	600	600
Ø	Z0076600	TRAINEES	HOUR	500	500
Ø	Z0076604	TRAINEES TRAINING PROGRAM GRADUATE	HOUR	500	500
* SPECIALTY ITEM      Ø 0042					
REV - MS					
* = SPECIALTY ITEM					
 100 S. Wacker Drive Suite 400 Chicago, IL 60606	USER NAME = dmeier	DESIGNED = DJM	REVISED =	STATE OF ILLINOIS DEPARTMENT OF TRANSPORTATION	
		DRAWN = DJM	REVISED =		
	PLOT SCALE = 2.0000 ' / in.	CHECKED = REL	REVISED =		
	PLOT DATE = 11/12/2024	DATE = 11/13/2024	REVISED =		
				FAI ROUTE 72 (I-72) SUMMARY OF QUANTITIES	
				SCALE: NONE	SHEET 2 OF 2 SHEETS
				STA.	TO STA.
				ILLINOIS   FED. AID PROJECT	
				F.A.I. RTE.	SECTION
				COUNTY	TOTAL SHEETS
				PIKE	SHEET NO.
				72	75-4WS
				23	4
				CONTRACT NO. 72736	



REMOVAL LEGEND:

- PAVEMENT REMOVAL - 15" (PAID FOR AS CLASS B PATCHES, TYPE IV, 11")
- PAVED SHOULDER REMOVAL - 8"
- REMOVAL AND DISPOSAL OF UNSUITABLE MATERIAL (11" UNDER SHOULDERS, 4" UNDER PAVEMENT)
- PIPE UNDERDRAIN REMOVAL

EXISTING TYPICAL SECTION



PROPOSED TYPICAL SECTION

EXISTING LEGEND:

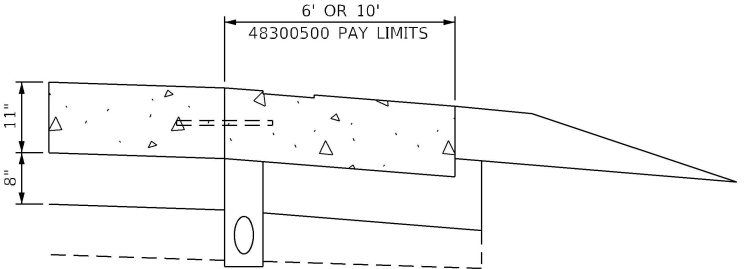
- EXISTING GROUND
- EXISTING AGGREGATE SHOULDERS, TYPE B
- EXISTING LIME MODIFIED SOIL, 12"
- EXISTING LIME MODIFIED SOIL OR SUB-BASE GRANULAR MATERIAL, TYPE C
- EXISTING BITUMINOUS SHOULDER, 6"
- EXISTING BITUMINOUS SHOULDER, SUPERPAVE MIX, IL 9.5L, LOW ESAL, (WITH SAWED RUMBLE STRIPS) 2"
- EXISTING PIPE UNDERDRAINS 4"
- EXISTING BITUMINOUS CONCRETE BINDER COURSE, MIX B, TYPE 1, 13"
- EXISTING POLYMERIZED BITUMINOUS CONCRETE SURFACE COURSE, SUPERPAVE, MIX. "D", N70, 2"

PROPOSED LEGEND:

- AGGREGATE WEDGE SHOULDER, TYPE B
- PORTLAND CEMENT CONCRETE SHOULDERS 11"
- AGGREGATE BASE COURSE, TYPE B, 8"
- SHOULDER RUMBLE STRIPS, 16 INCH
- TIE BARS 3/4"
- CLASS B PATCHES, TYPE IV, 11 INCH
- PROFILE DIAMOND GRINDING CONCRETE PAVEMENT
- PIPE UNDERDRAINS, TYPE 1, 4"

NOTES:

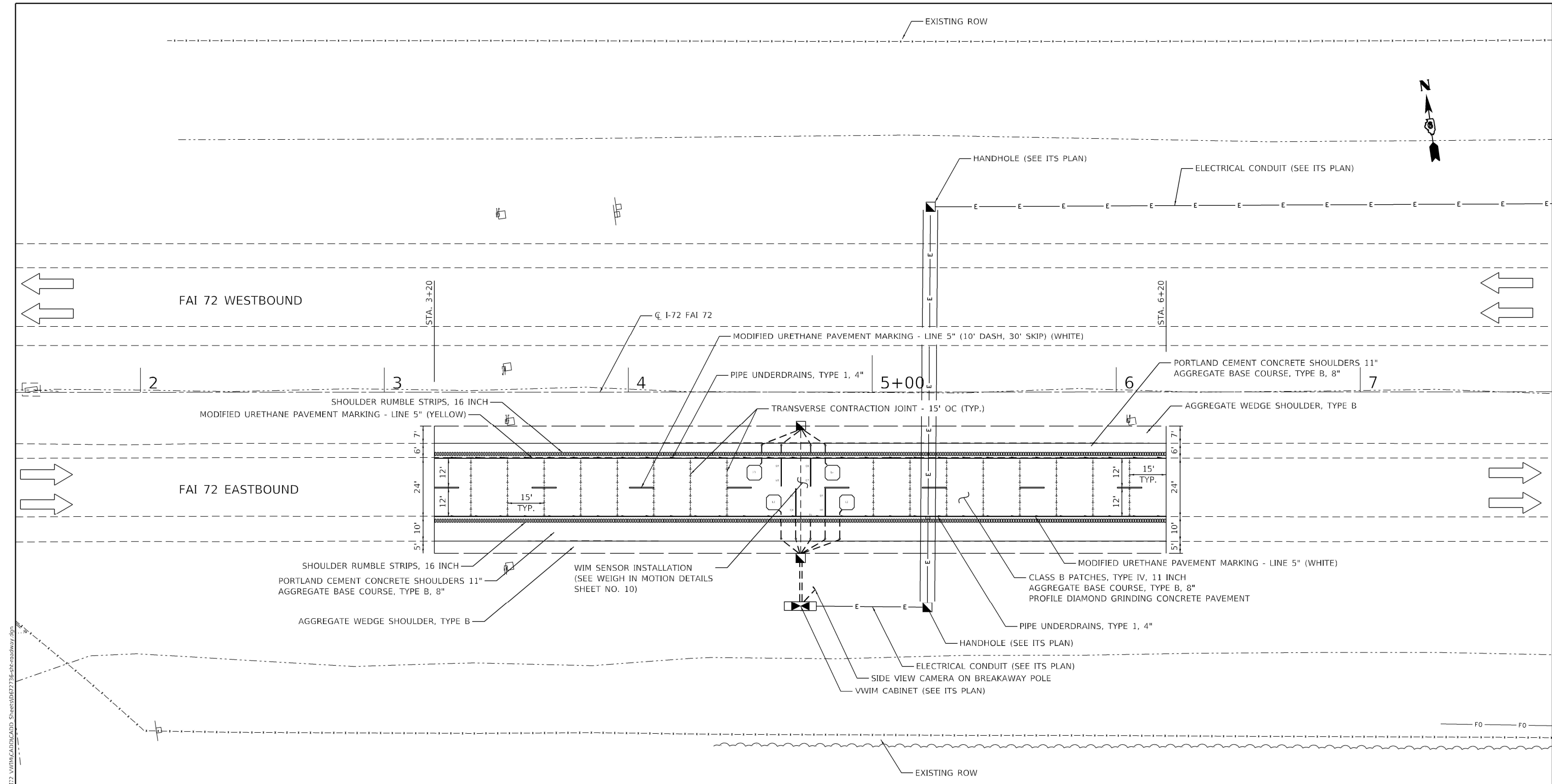
- SEE STANDARD DETAIL 420001-10 FOR SHOULDER PAVEMENT JOINTS.
- TIE BARS 3/4" BETWEEN LANE PAVEMENT AND SHOULDERS TO BE DRILLED AND GROUTED AS NEEDED.



SHOULDER DETAIL

MODEL: Default  
FILE NAME: S:\Projects\3222 - IDOT PTB 208-53 Voz-Nor Prairie\Project-Work\W01 - I72 WPTMCA\ADD\ADD Sheets\0677736-shc-typical.dgn

<div><div>TranSmart</div><div>an  Company</div></div> <div>100 S. Wacker Drive Suite 400 Chicago, IL 60606</div>	USER NAME = dmeier	DESIGNED - PWF	REVISED -	STATE OF ILLINOIS DEPARTMENT OF TRANSPORTATION	FAI ROUTE 72 (I-72) TYPICAL SECTIONS				F.A.I. RTE.	SECTION	COUNTY	TOTAL SHEETS	SHEET NO.
		DRAWN - PWF	REVISED -						72	75-4WS	PIKE	23	5
	PLOT SCALE = 10.0000 ' / in.	CHECKED - KJC	REVISED -						CONTRACT NO. 72736				
	PLOT DATE = 11/12/2024	DATE - 11/13/2024	REVISED -						ILLINOIS   FED. AID PROJECT				
					SCALE: N.T.S.	SHEET	OF	SHEETS	STA.	TO	STA.		

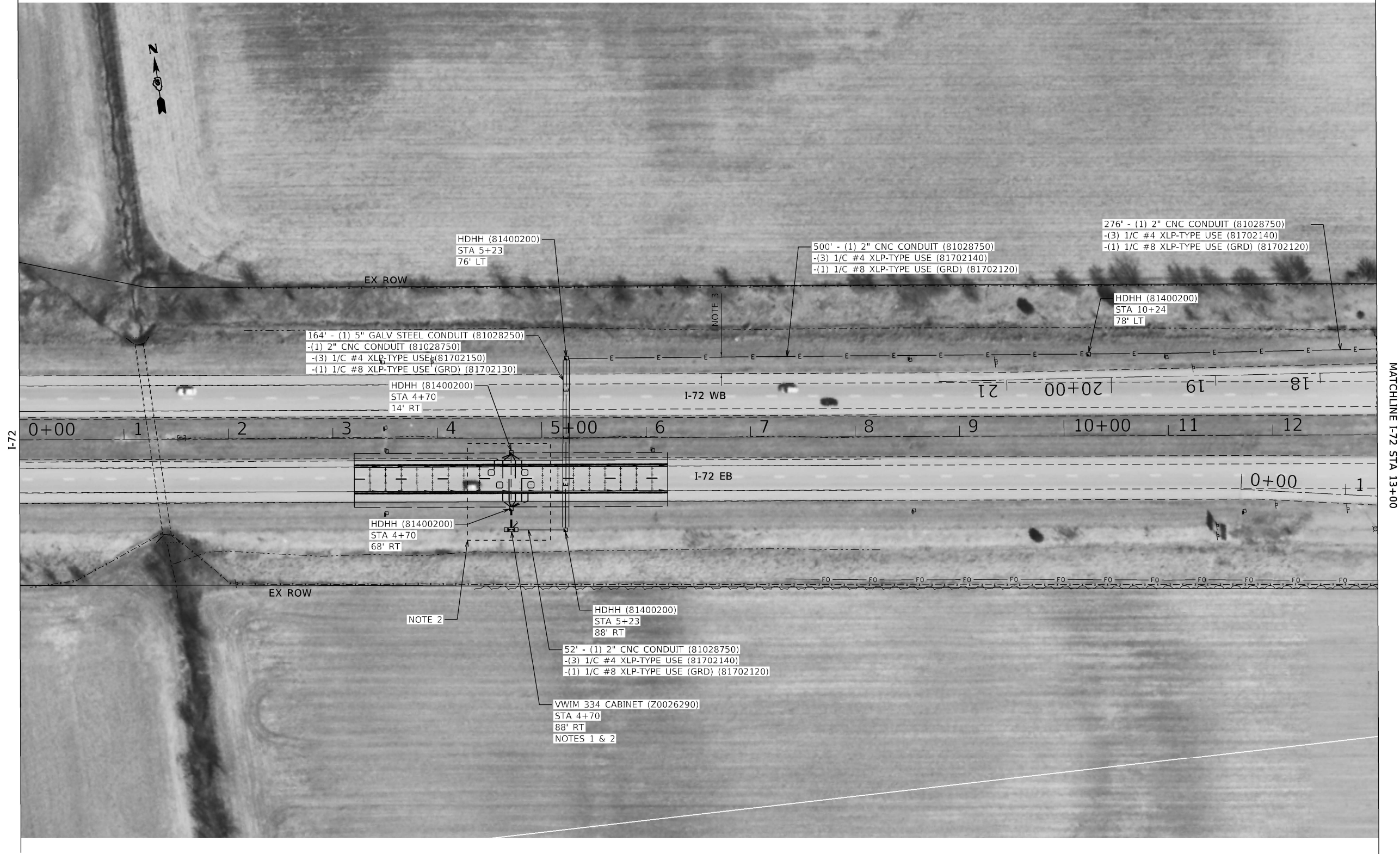


MODEL: Default  
FILE NAME: S:\Projects\2322 - IDOT PTB 208-53 Vot-Vor, Prairie\Project-Work\W01 - I72 VWIM\CAD\DWG\Sheet\ID677278-8-8-24-roadway.dgn

EXISTING I-72 ALIGNMENT DATA		
STATION	NORTHING	EASTING
0+00	1,095,339.3070	2,104,569.0000
40+00	1,094,771.4928	2,108,528.4932

- NOTES:**
- 1. TRANSVERSE CONTRACTION JOINTS SHALL BE CONSTRUCTED ACCORDING TO ARTICLE 420.05(C) AT 15' CENTERS ALONG THE ENTIRE LENGTH OF THE PATCH, EXCLUDING THE HMA/PCC INTERFACES.
  - 2. TRANSVERSE CONTRACTION JOINTS SHALL NOT BE LOCATED WITHIN 2 FEET OF AN EMBEDDED SENSOR.
  - 3. SEE STANDARD DETAIL 420001-10 FOR SHOULDER PAVEMENT JOINTS.
  - 4. FINAL PAVEMENT MARKINGS SHALL BE GROOVED/RECESSED PRIOR TO INSTALLATION.





- NOTES
1. THE EDGE OF THE CABINET SHALL BE PLACED A MINIMUM OF 35' FROM THE EDGE OF THE TRAVELED WAY.
  2. FOR VWIM DETAILS, SEE SHEETS 10 TO 21
  3. INSTALL HANDHOLES/CONDUIT BETWEEN 10' AND 15' FROM EDGE OF SHOULDER, UNLESS OBSTRUCTION IS ENCOUNTERED, TYP.

MODEL: Default  
FILE NAME: S:\Projects\2322 - IDOT PTB 208-53 Vio-Vir Prairie\Project-Work\W01 - I72 VWIM\CADD\CADD Sheets\I677736-sheet-01.dgn

<div><div><div>TranSmart</div><div>an  Company</div></div><div>100 S. Wacker Drive Suite 400 Chicago, IL 60606</div></div>	USER NAME = dmeier	DESIGNED - DJM	REVISED -	STATE OF ILLINOIS DEPARTMENT OF TRANSPORTATION	FAI ROUTE 72 (I-72) ITS PLANS				F.A.I. RTE.	SECTION	COUNTY	TOTAL SHEETS	SHEET NO.
		DRAWN - DJM	REVISED -		72	75-4WS	PIKE	23	7				
	PLOT SCALE = 100.0000 ' / in.	CHECKED - REL	REVISED -		CONTRACT NO. 72736								
	PLOT DATE = 11/12/2024	DATE - 11/13/2024	REVISED -		ILLINOIS FED. AID PROJECT								
					SCALE: 1" = 50'	SHEET 1	OF 3	SHEETS	STA. 0+00	TO STA. 13+00			

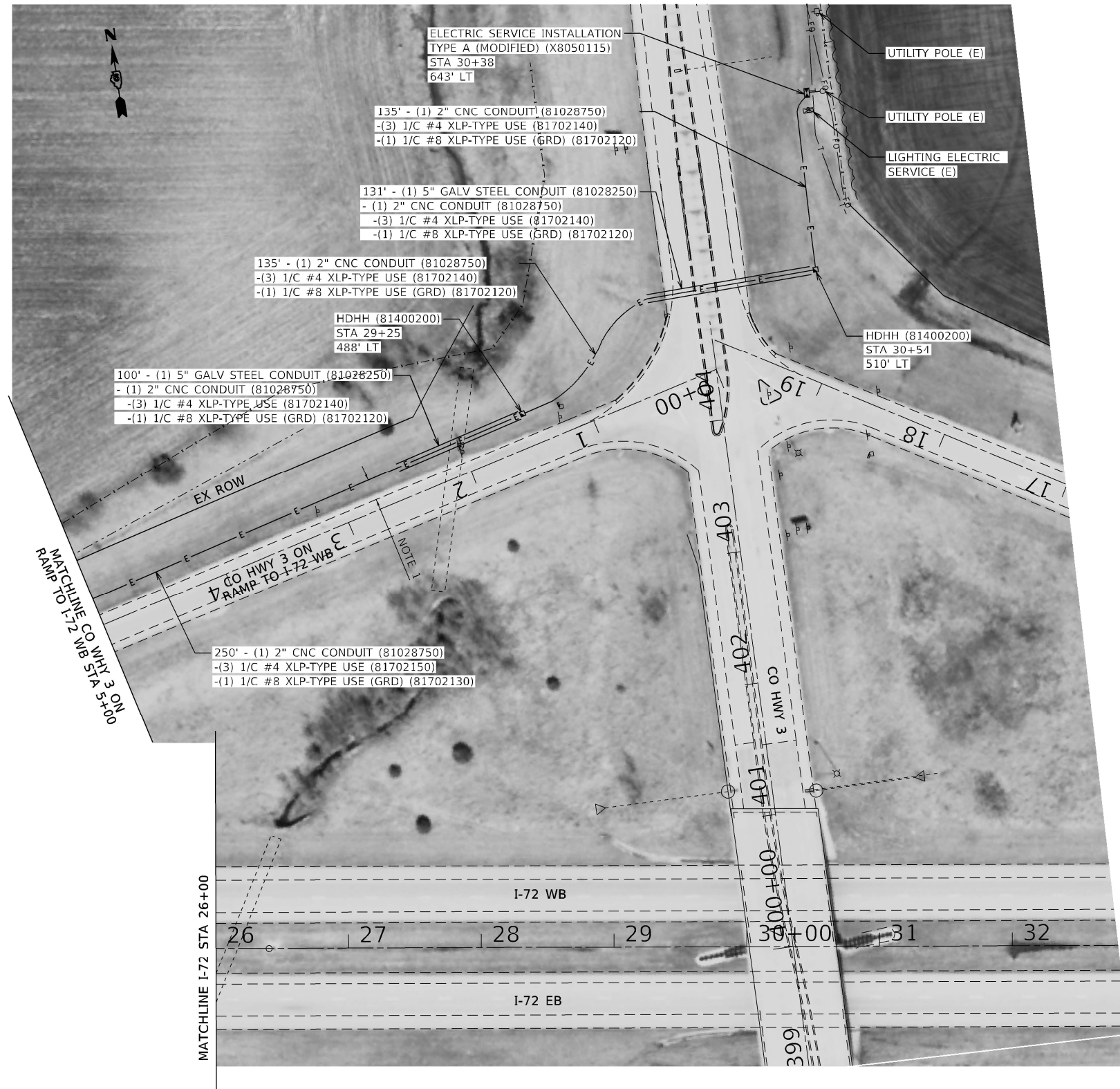




NOTES  
1. INSTALL HANDHOLES/CONDUIT BETWEEN 10' AND 15' FROM EDGE OF SHOULDER, UNLESS OBSTRUCTION IS ENCOUNTERED, TYP.

MODEL: Default  
FILE NAME: S:\Projects\2322 - IDOT PTB 208-53 Vio-Vir Prairie\Project-Work\W01 - I72 VVIM\ADD\CA00 Sheets\ID677736-sheet-02.dgn

<div>TranSmart an ATLAS Company</div> <div>100 S. Wacker Drive Suite 400 Chicago, IL 60606</div>	USER NAME = dmeier		DESIGNED - DJM	REVISED -	STATE OF ILLINOIS DEPARTMENT OF TRANSPORTATION	FAI ROUTE 72 (I-72) ITS PLANS			F.A.I. RTE.	SECTION	COUNTY	TOTAL SHEETS	SHEET NO.
	DRAWN - DJM		REVIS	REVISED -					72	75-4WS	PIKE	23	8
	PLOT SCALE = 100,0000 ' / in.		CHECKED - REL	REVISED -		SCALE: 1" = 50'			CONTRACT NO. 72736				
	PLOT DATE = 11/12/2024		DATE - 11/13/2024	REVISED -		SHEET 2	OF 3	SHEETS	STA. 13+00	TO STA. 26+00	ILLINOIS FED. AID PROJECT		



NOTES  
1. INSTALL HANDHOLES/CONDUIT BETWEEN 10' AND 15' FROM EDGE OF SHOULDER, UNLESS OBSTRUCTION IS ENCOUNTERED, TYP.

MODEL: Default  
FILE NAME: S:\Projects\2322 - IDOT PTB 208-53 Vio-Vir Prairie\Project-Work\W01 - I72 VVIM\CAD\CADD Sheets\ID677736-sheet-03.dgn

**TranSmart**  
an ATLAS Company

100 S. Wacker Drive  
Suite 400  
Chicago, IL 60606

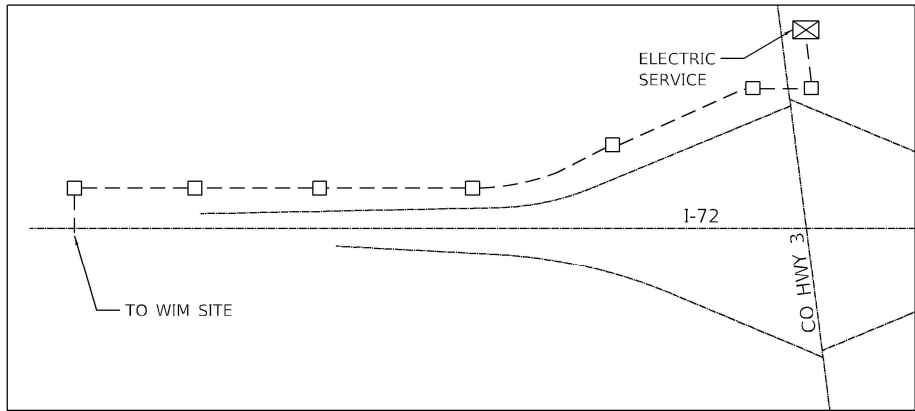
USER NAME = dmeier	DESIGNED - DJM	REVISED -
DRAWN - DJM	REVISED -	
PLOT SCALE = 100.0000 ' / in.	CHECKED - REL	REVISED -
PLOT DATE = 11/12/2024	DATE - 11/13/2024	REVISED -

STATE OF ILLINOIS  
DEPARTMENT OF TRANSPORTATION

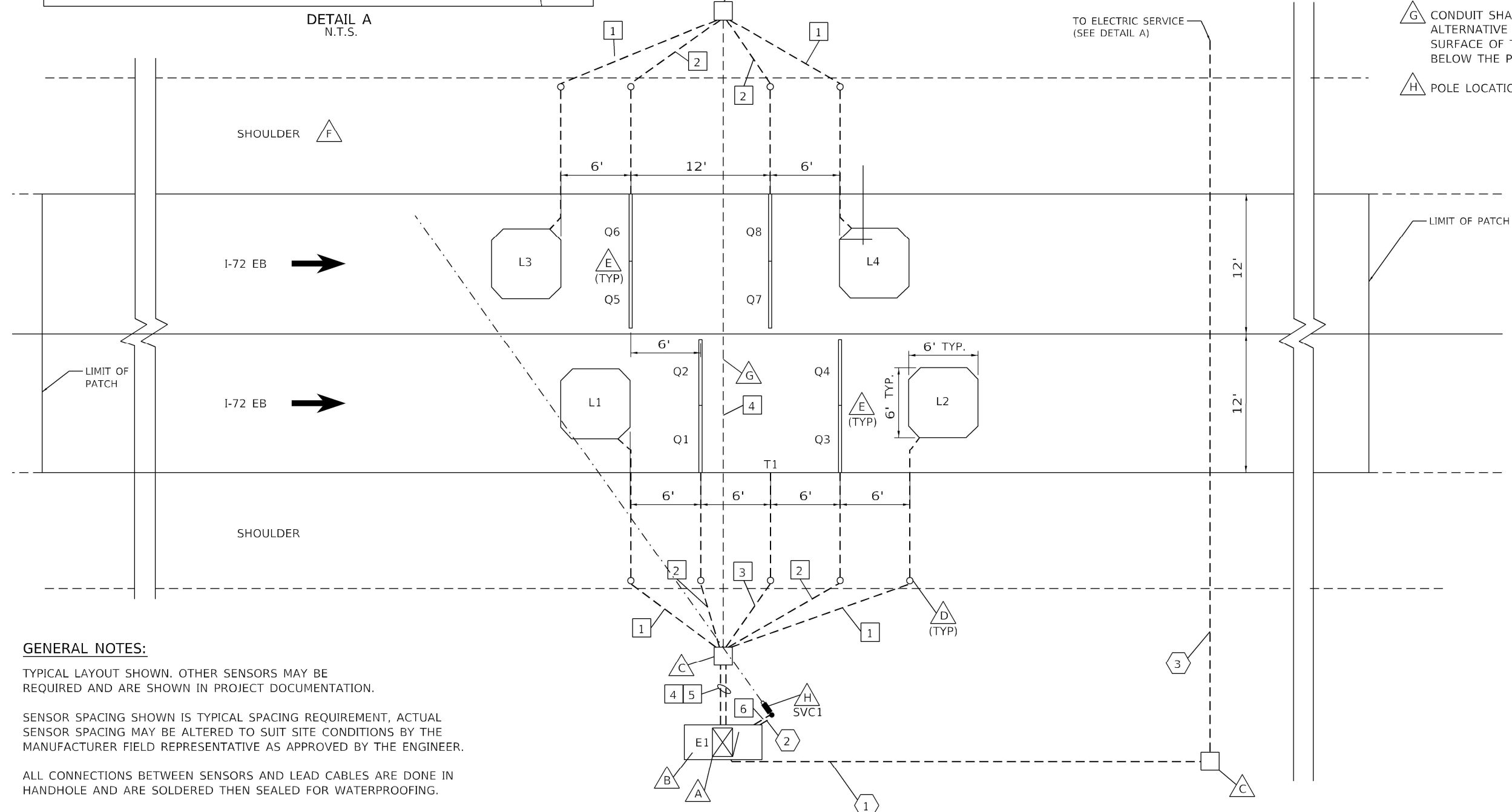
FAI ROUTE 72 (I-72)  
ITS PLANS

SCALE: 1" = 50'    SHEET 3    OF 3    SHEETS    STA. 26+00    TO STA. 32+80

F.A.I. RTE.	SECTION	COUNTY	TOTAL SHEETS	SHEET NO.
72	75-4WS	PIKE	23	9
CONTRACT NO. 72736				
ILLINOIS FED. AID PROJECT				



DETAIL A  
N.T.S.



**LEGEND:**

E- ELECTRONICS ENCLOSURE  
L - INDUCTIVE LOOP  
Q - QUARTZ WIM SENSOR  
SVC - SIDE VIEW CAMERA  
T - TEMPERATURE SENSOR

- CABINET
- SIGNAL CONDUIT
- POWER CONDUIT
- NOTE

**NOTES:**

- CABINET WITH WIM ELECTRONICS (SEE SHEET 14 AND 20 FOR INSTALLATION DETAILS).
- CABINET BASE (SEE SHEET 21 FOR INSTALLATION DETAILS).
- HEAVY-DUTY HANDHOLE.
- DRILL THROUGH SHOULDER FOR CONDUIT.
- PAVEMENT ON EITHER SIDE OF EACH SENSOR MUST BE FREE OF JOINTS AND CRACKS FOR 2'.
- SITE CONDITIONS AS PER ASTM E1318-02 FOR ALL LANES.
- CONDUIT SHALL BE PLACED USING DIRECT BORING, JACKING OR ALTERNATIVE METHOD THAT DOES NOT REQUIRE THE SURFACE OF THE ROAD TO BE CUT AND SHALL BE INSTALLED BELOW THE PIPE UNDERDRAINS.
- POLE LOCATION MUST USE OF BREAK-AWAY POLE

**SIGNAL CONDUITS:**

- 1" CONDUIT  
1 - LOOP WIRE (1-1/C#14)
- 1" CONDUIT  
2 - QUARTZ LEADS  
(2 - RG58 COAXIAL CABLE  
2 - 1-1/C #8 GROUND)
- 1" CONDUIT  
1 - TEMPERATURE SENSOR LEAD
- 2 1/2" CONDUIT  
2 - LOOP LEADS (2-1 PR #14)  
4 - QUARTZ LEADS  
(4 - RG58 COAXIAL CABLE  
4 - 1-1/C #8 GROUND)
- 2 1/2" CONDUIT  
2 - LOOP LEADS (2-1 PR #14)  
4 - QUARTZ LEADS  
(4 - RG58 COAXIAL CABLE  
4 - 1-1/C #8 GROUND)  
1 - TEMPERATURE SENSOR LEAD
- 1-1/2" CONDUIT  
CAT 5E NETWORK CABLE

**POWER CONDUITS:**

- CABINET ENCLOSURE POWER - 3-1/C #4 AND 1-1/C #8 GROUND IN 2" CONDUIT
- SVC CAMERA POWER - 2-1/C #12 AND #12 GROUND IN 1-1/2" CONDUIT
- CABINET ENCLOSURE POWER - 3-1/C #4 AND 1-1/C #8 GROUND IN 2" CONDUIT INSIDE 6" GSC SLEEVE

**GENERAL NOTES:**

TYPICAL LAYOUT SHOWN. OTHER SENSORS MAY BE REQUIRED AND ARE SHOWN IN PROJECT DOCUMENTATION.

SENSOR SPACING SHOWN IS TYPICAL SPACING REQUIREMENT, ACTUAL SENSOR SPACING MAY BE ALTERED TO SUIT SITE CONDITIONS BY THE MANUFACTURER FIELD REPRESENTATIVE AS APPROVED BY THE ENGINEER.

ALL CONNECTIONS BETWEEN SENSORS AND LEAD CABLES ARE DONE IN HANDHOLE AND ARE SOLDERED THEN SEALED FOR WATERPROOFING.

CABLES MUST BE PROTECTED BY PVC SLEEVES WHERE THEY CROSS PAVEMENT JOINTS/CRACKS.

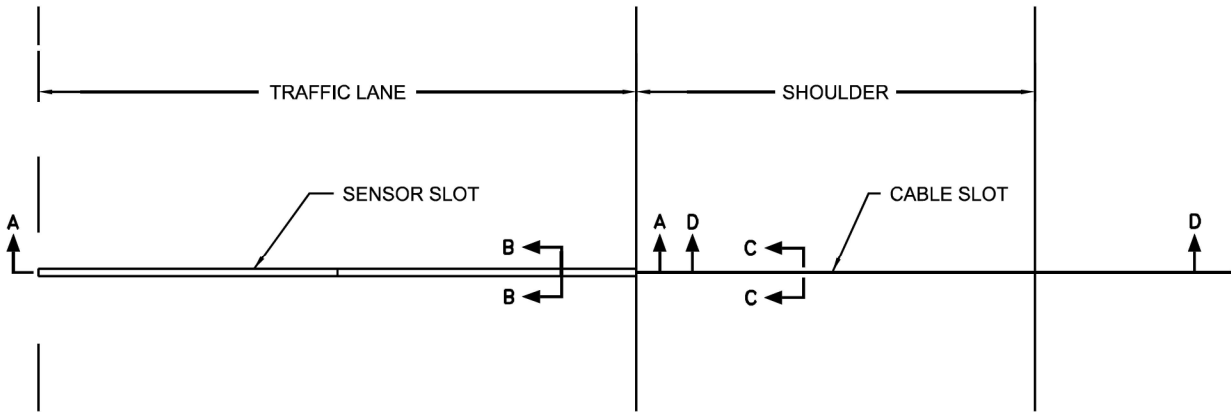
WIM HEAVY-DUTY HANDHOLES SHALL BE NO FURTHER THAN 200' APART.

**SITE LAYOUT VIRTUAL WEIGH STATION**

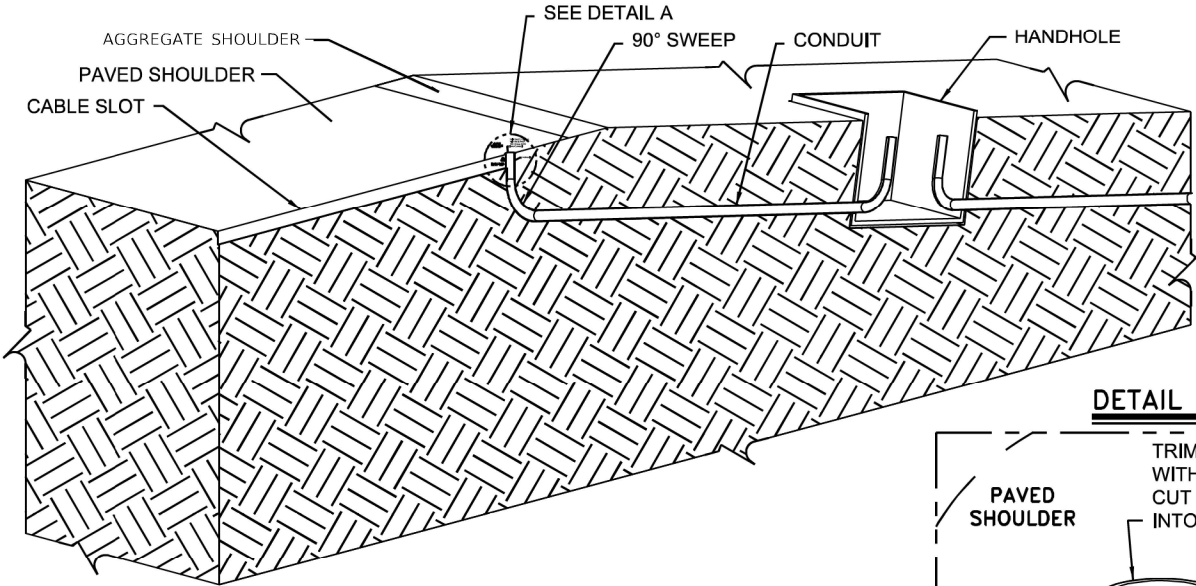
MODEL: Default  
FILE NAME: S:\Projects\2322 - IDOT PTB 208-53 Voz-Nor Prairie\Project-Work\W01 - I72 WIM\CADD\CADD Sheets\I677736-sht-detail-1-rs.dgn

 100 S. Wacker Drive Suite 400 Chicago, IL 60606	USER NAME = dmeier		DESIGNED - DJM	REVISED -	STATE OF ILLINOIS DEPARTMENT OF TRANSPORTATION	FAI ROUTE 72 (I-72) WEIGH IN MOTION DETAILS				F.A.I. RTE.	SECTION	COUNTY	TOTAL SHEETS	SHEET NO.
	DRAWN - DJM		CHECKED - REL	REVISED -		SCALE: N.T.S.				72	75-4WS	PIKE	23	10
	PLOT SCALE = 2.0000 ' / in.		DATE - 11/13/2024	REVISED -		SHEET 1 OF 13 SHEETS				CONTRACT NO. 72736				
	PLOT DATE = 11/12/2024					TO STA.				ILLINOIS FED. AID PROJECT				

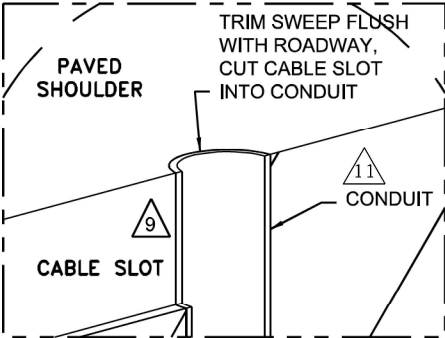
PLAN VIEW – SENSOR INSTALLATION



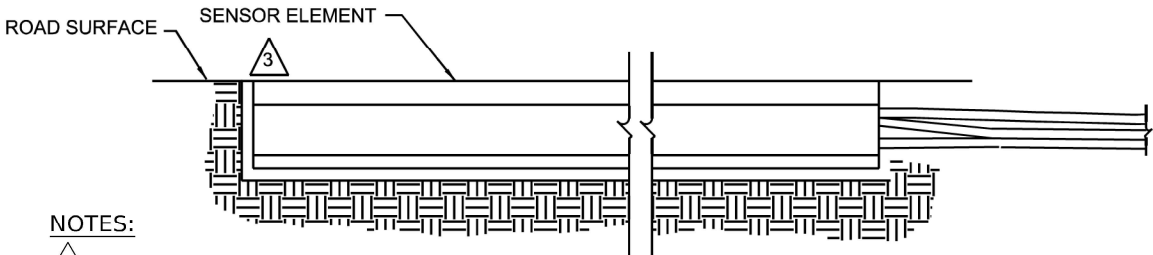
SECTION D-D (CABLE ROUTING DETAILS)



DETAIL A



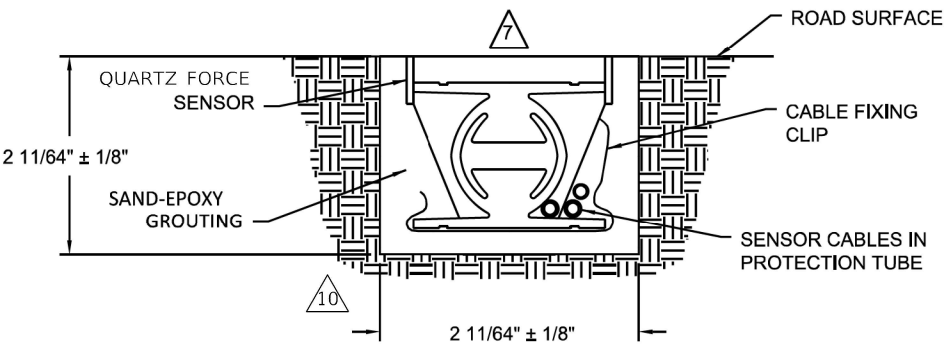
SECTION A-A



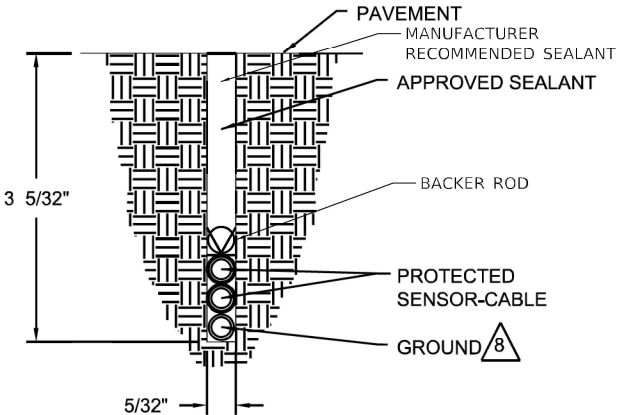
NOTES:

- 1 CRACKS OR SAW CUTS IN THE ROADWAY MUST NOT BE LOCATED CLOSER THAN 24 INCHES UPSTREAM AND 24 INCHES DOWNSTREAM OF THE QUARTZ FORCE SENSOR.
- 2 SLOT LENGTH IS 6 INCHES LONGER THAN SENSOR.
- 3 SET SENSOR FLUSH WITH OR SLIGHTLY HIGHER THAN ROAD SURFACE USING INCLUDED LEVELING BEAMS.
- 4 CHECK THE RESISTANCE OF THE SENSOR BY PLACING A DIGITAL MULTIMETER ACROSS THE CENTER CONDUCTOR OF THE BNC CONNECTOR AND THE OUTER BODY. THE READING SHOULD BE INFINITY.
- 5 CHECK THE VOLTAGE OUTPUT OF THE SENSOR BY MONITORING THE METER WHEN A TRUCK PASSES OVER THE SENSOR INSTALLED IN THE ROADWAY. AS THE TRUCK PASSES OVER THE SENSOR, VOLTAGE DEFLECTION SHOULD BE OBSERVED.
- 6 FOR INSTALLATION PROCESS REFER TO MANUFACTURER'S INSTRUCTION MANUAL.
- 7 SENSOR MUST BE GROUND FLUSH WITH ROAD SURFACE AFTER GROUT HAS CURED.
- 8 IF SIGNIFICANT NOISES SOURCES ARE IDENTIFIED, OVERHEAD POWER SOURCES ETC., CONNECT GROUND WIRE. THE OTHER END OF THE GOUND WIRE CONNECTS TO CABINET GROUND BUSBAR.
- 9 CORE DRILL OR CUT NOTCH IN PAVED SHOULDER FOR SWEEP. PLUG SWEEP OPENING, COVER WITH LOOP SEALANT.
- 10 CONTRACTOR TO COORDINATE PLACEMENT OF SENSORS WITH REBAR TO ENSURE PROPER CONCRETE COVER IS MAINTAINED.

SECTION B-B



SECTION C-C



SENSOR INSTALLATION

11 NON-METALLIC FLEX OR PVC CONDUIT

MODEL: Default  
FILE NAME: S:\Projects\03222 - IDOT PTB 208-53 Voz-Nor Prairie\Project-Work\W01 - I72 VOTM\CADD\CADD Sheets\ID677736-sheet-details-I72.dgn



100 S. Wacker Drive  
Suite 400  
Chicago, IL 60606

USER NAME = dmeier	DESIGNED - DJM	REVISED -
	DRAWN - DJM	REVISED -
PLOT SCALE = 2.0000 ' / in.	CHECKED - REL	REVISED -
PLOT DATE = 11/12/2024	DATE - 11/13/2024	REVISED -

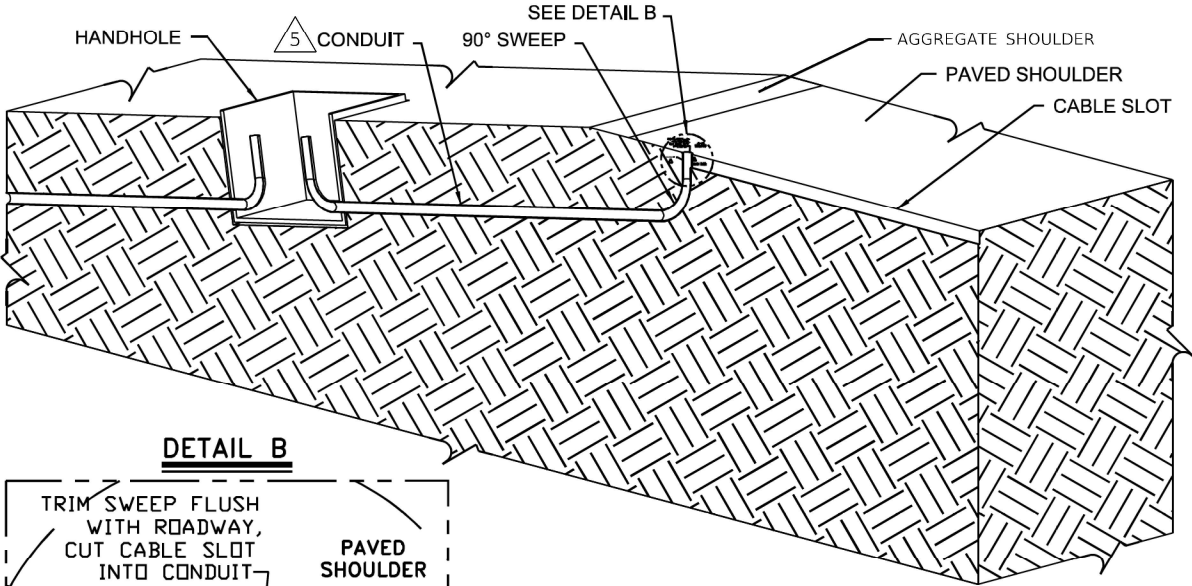
STATE OF ILLINOIS  
DEPARTMENT OF TRANSPORTATION

FAI ROUTE 72 (I-72)  
WEIGH IN MOTION DETAILS

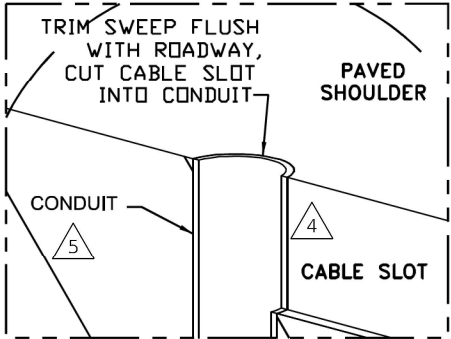
SCALE: N.T.S. SHEET 2 OF 13 SHEETS STA. TO STA.

F.A.I. RTE.	SECTION	COUNTY	TOTAL SHEETS	SHEET NO.
72	75-4WS	PIKE	23	11
CONTRACT NO. 72736				
ILLINOIS FED. AID PROJECT				

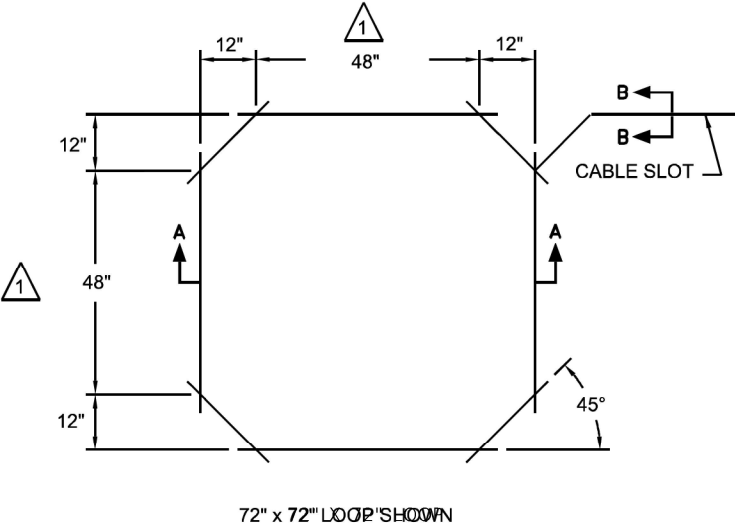
CABLE ROUTING DETAILS



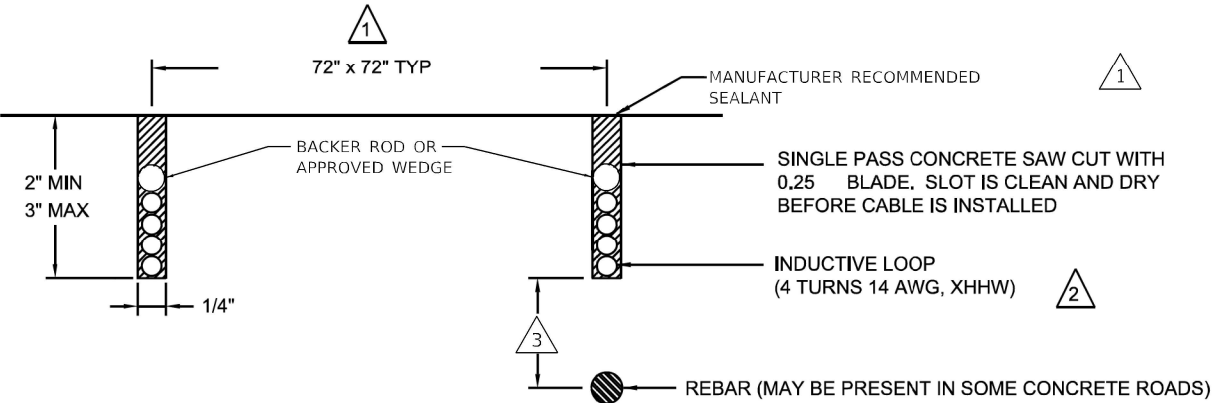
DETAIL B



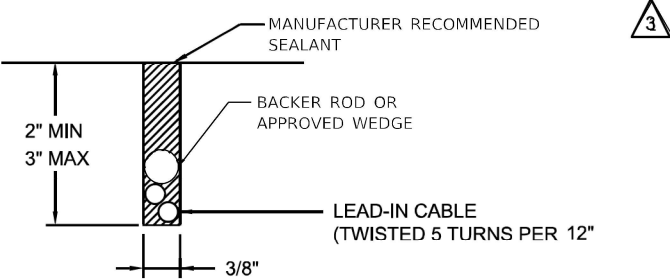
LOOP DIMENSION DETAIL



SECTION A-A



SECTION B-B



NOTES:

- 1 USE CAULKING GUN PER MANUFACTURER'S SPECIFICATIONS.
- 2 LOOP INSTALLATION PER MANUFACTURER'S MANUALS - PERMANENT OCTAGON LOOPS.
- 3 IF LOOP IS INSTALLED OVER REBAR, THERE MUST BE A MINIMUM OF 2 INCHES OF CONCRETE BELOW AND A MINIMUM OF 1 INCH OF FILL ABOVE THE WIRES. CONTRACTOR TO COORDINATE PLACEMENT OF LOOPS WITH REBAR TO ENSURE PROPER CONCRETE COVER IS MAINTAINED.
- 4 CORE DRILL OR CUT NOTCH IN PAVED SHOULDER FOR SWEEP. PLUG SWEEP OPENING, COVER WITH LOOP SEALANT.
- 5 NON-METALLIC FLEX OR PVC CONDUIT.

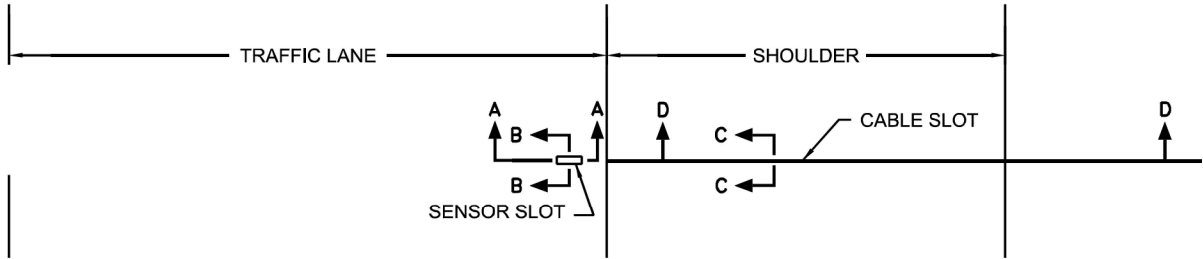
DETECTION LOOP INSTALLATION

MODEL: Default  
FILE NAME: S:\Projects\2322 - IDOT PTB 208-53 Voz-Nor Prairie\Project Work\W01 - I72 VOTM\CADD\CADD Sheets\ID67736-sheet-detailed-fig-03.dgn

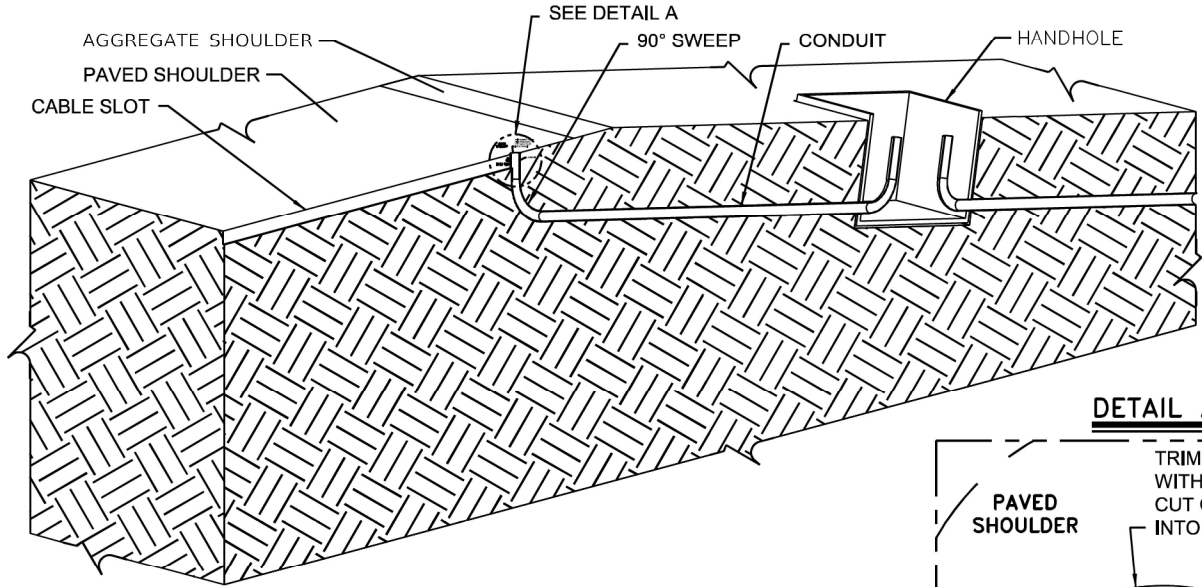
<div><div>TranSmart</div><div>an  Company</div></div> <div>100 S. Wacker Drive Suite 400 Chicago, IL 60606</div>	USER NAME = dmeier	DESIGNED - DJM	REVISED -	STATE OF ILLINOIS DEPARTMENT OF TRANSPORTATION	FAI ROUTE 72 (I-72) WEIGH IN MOTION DETAILS				F.A.I. RTE.	SECTION	COUNTY	TOTAL SHEETS	SHEET NO.
	PLOT SCALE = 2.0000' / in.	DRAWN - DJM	REVISED -		72	75-4WS	PIKE	23	12				
	PLOT DATE = 11/12/2024	CHECKED - REL	REVISED -		CONTRACT NO. 72736								
	DATE = 11/13/2024	DATE = 11/13/2024	REVISED -		ILLINOIS FED. AID PROJECT								
					SCALE: N.T.S.	SHEET 3	OF 13 SHEETS	STA.	TO STA.				



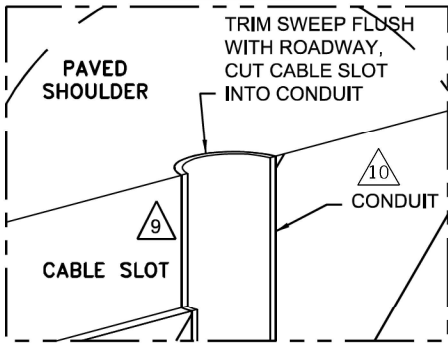
PLAN VIEW – SENSOR INSTALLATION



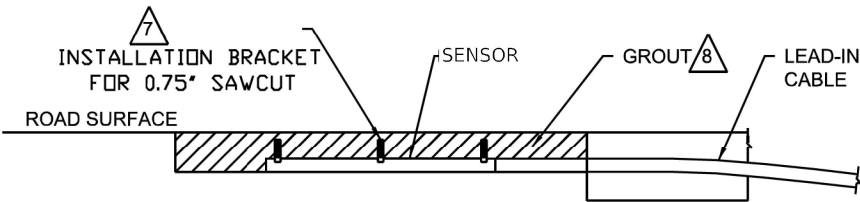
SECTION D-D (CABLE ROUTING DETAILS)



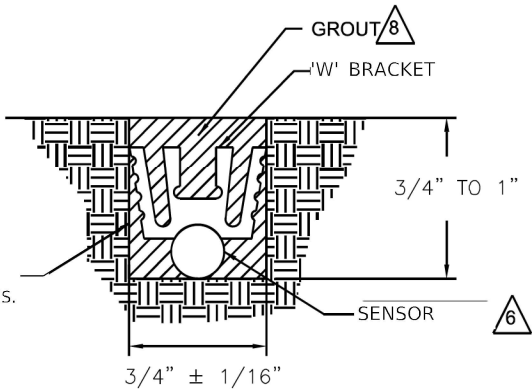
DETAIL A



SECTION A-A

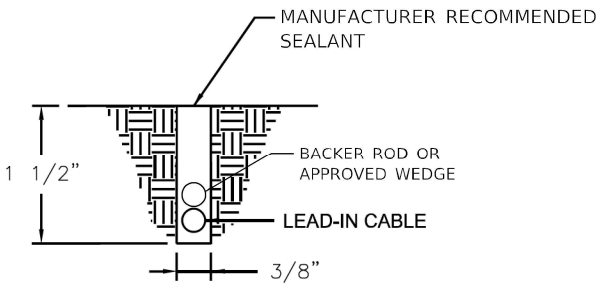


SECTION B-B



SINGLE PASS CONCRETE  
SAW CUT WITH MULTIPLE BLADES.  
SLOT IS CLEAN & DRY BEFORE  
SENSOR IS INSTALLED.

SECTION C-C



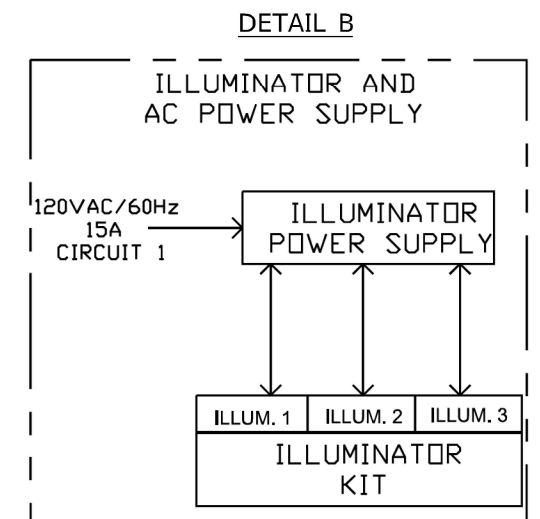
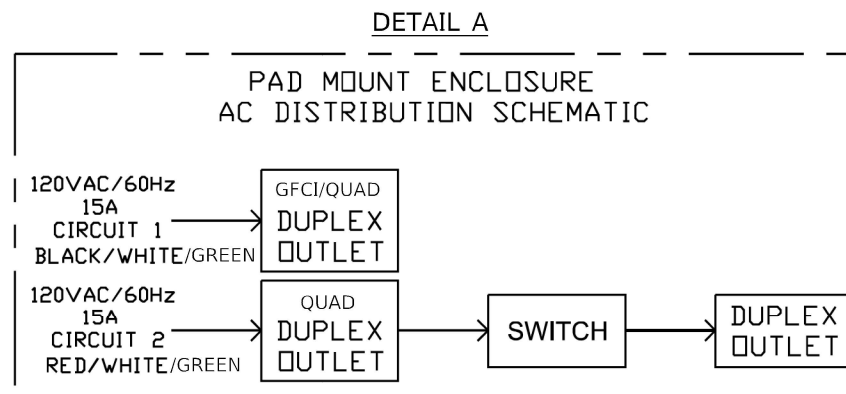
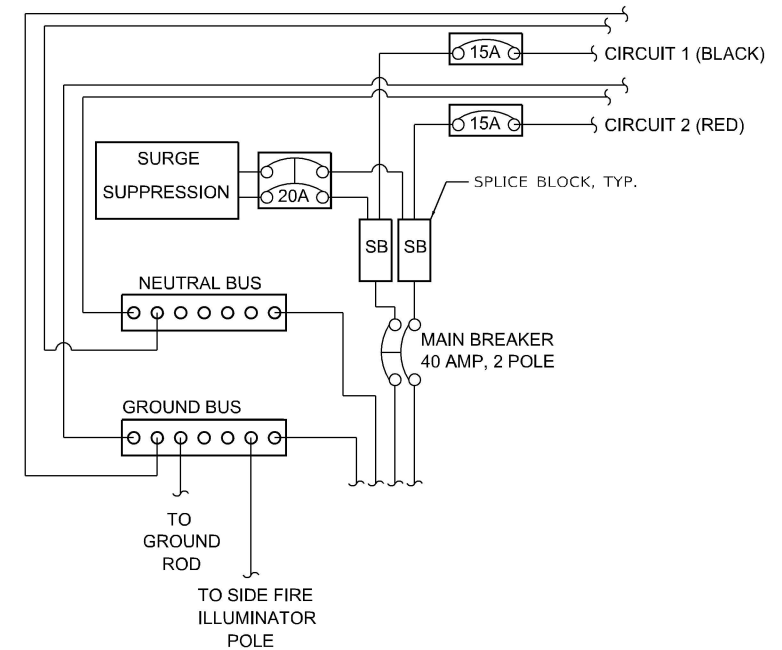
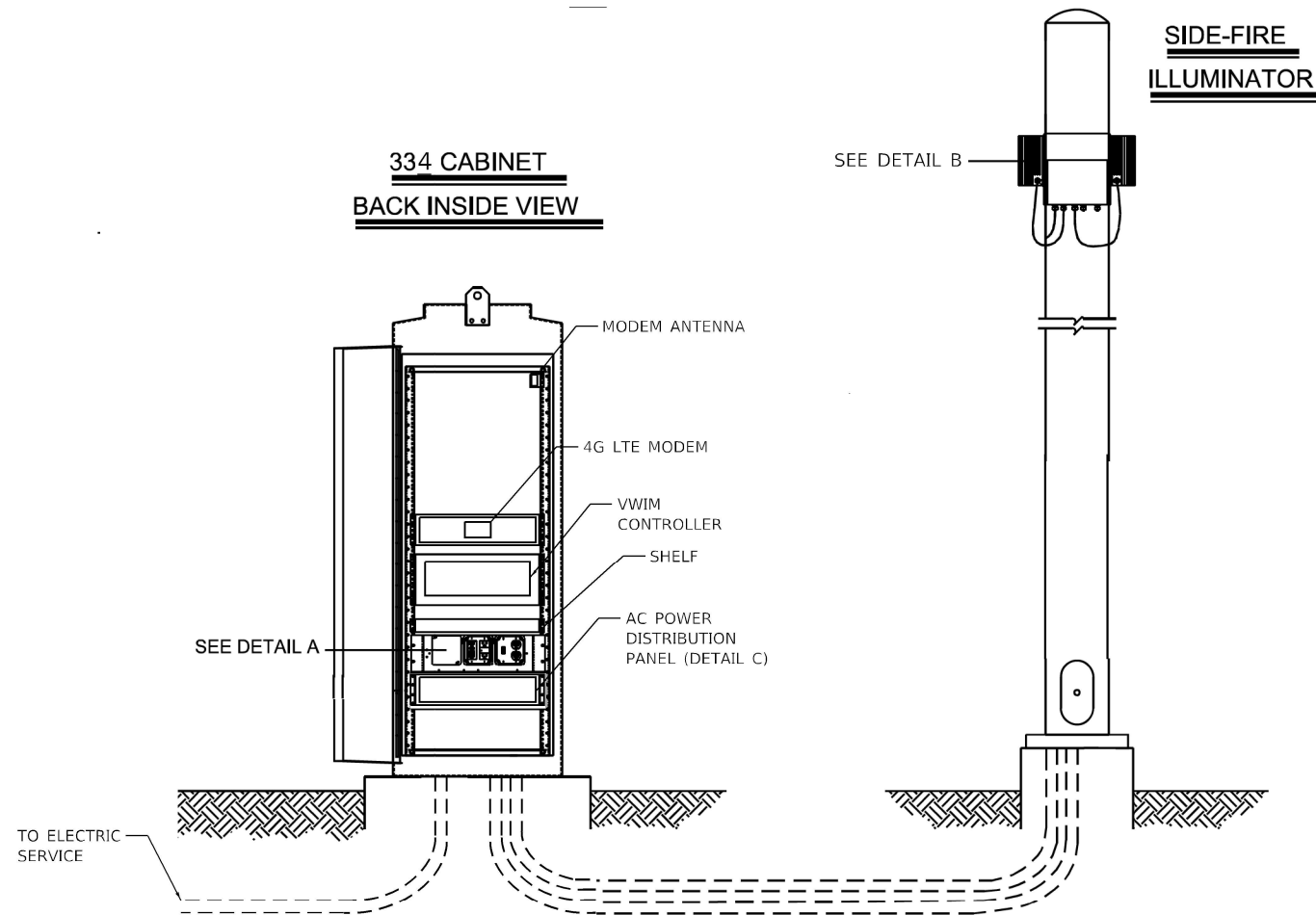
NOTES: (THIS SHEET ONLY)

- 1 CRACKS OR SAW CUTS IN THE ROADWAY MUST NOT BE LOCATED CLOSER THAN 24" UPSTREAM AND 24" DOWNSTREAM OF THE TEMPERATURE SENSOR.
- 2 SLOT LENGTH IS 4" LONGER THAN SENSOR.
- 3 SET THE SENSOR AT THE CORRECT DEPTH.
- 4 PLACE A BRACKET AT EACH END OF THE SENSOR.
- 5 LOCATE SENSOR IN SAME PAVEMENT AND WITHIN 6' OF THE TEMPERATURE COMPENSATED DEVICE. AVOID PLACING IN WHEEL PATH.
- 6 WEDGE SENSOR AGAINST FLOOR OF CUT UNDER "W" CLIP.
- 7 SPACE THREE BRACKETS EVENLY OVER THE LENGTH OF THE SENSOR.
- 8 USE MANUFACTURER RECOMMENDED GROUT.
- 9 CORE DRILL OR CUT NOTCH IN PAVED SHOULDER FOR SWEEP. PLUG SWEEP OPENING, COVER WITH LOOP SEALANT.
- 10 NON-METALLIC FLEX OR PVC CONDUIT.

IN-ROADWAY TEMPERATURE SENSOR

MODEL: Default  
FILE NAME: S:\Projects\2322 - IDOT PTB 208-53 Voz-Nor Prairie\Project Work\W01 - I72 WIM\CAD\CADD Sheets\ID67736-sheet-details-its-04.dgn

<div><div><div>TranSmart</div><div>inATLASCompany</div></div><div>100 S. Wacker Drive Suite 400 Chicago, IL 60606</div></div>	USER NAME = dmeier		DESIGNED - DJM	REVISED -	STATE OF ILLINOIS DEPARTMENT OF TRANSPORTATION	FAI ROUTE 72 (I-72) WEIGH IN MOTION DETAILS				F.A.I. RTE.	SECTION	COUNTY	TOTAL SHEETS	SHEET NO.
	DRAWN - DJM		CHECKED - REL	REVISED -		SCALE: N.T.S.				72	75-4WS	PIKE	23	13
	PLOT SCALE = 2.0000 ' / in.		DATE - 11/13/2024	REVISED -		SHEET 4 OF 13 SHEETS				CONTRACT NO. 72736				
	PLOT DATE = 11/12/2024					STA. TO STA.				ILLINOIS FED. AID PROJECT				



**NOTES:**

- 1 ALL ELECTRICAL DEVICES, GROUNDING, BONDING, WIRING AND MOUNTING MUST MEET THE NATIONAL ELECTRICAL CODE NFPA70 AND LOCAL ELECTRICAL CODE.
- 2 EQUIPMENT MUST BE PROTECTED WITH AN ANSI/IEEE C62.41 CATEGORY C RATED PROTECTION DEVICE WITH A MINIMUM PEAK CURRENT HANDLING CAPABILITY OF 36KA (8/20 S) INSTALLED AT THE LOAD CENTER OR SUB LOAD CENTER.

**120VAC CABINET POWER INSTALLATION  
AND LOAD CENTER DETAIL**

MODEL: Default  
FILE NAME: S:\Projects\2322 - IDOT PTH 208-53 Voz-Nor Prairie\Project-Work\W01 - I72 VWIM\CADD\CADD Sheets\ID677236-sheet04-11-15.dgn



100 S. Wacker Drive  
Suite 400  
Chicago, IL 60606

USER NAME = dmeier	DESIGNED - REL	REVISED -
DRAWN - DJM	REVISED -	
PLOT SCALE = 2.0000 ' / in.	CHECKED - WDS	REVISED -
PLOT DATE = 11/12/2024	DATE - 11/13/2024	REVISED -

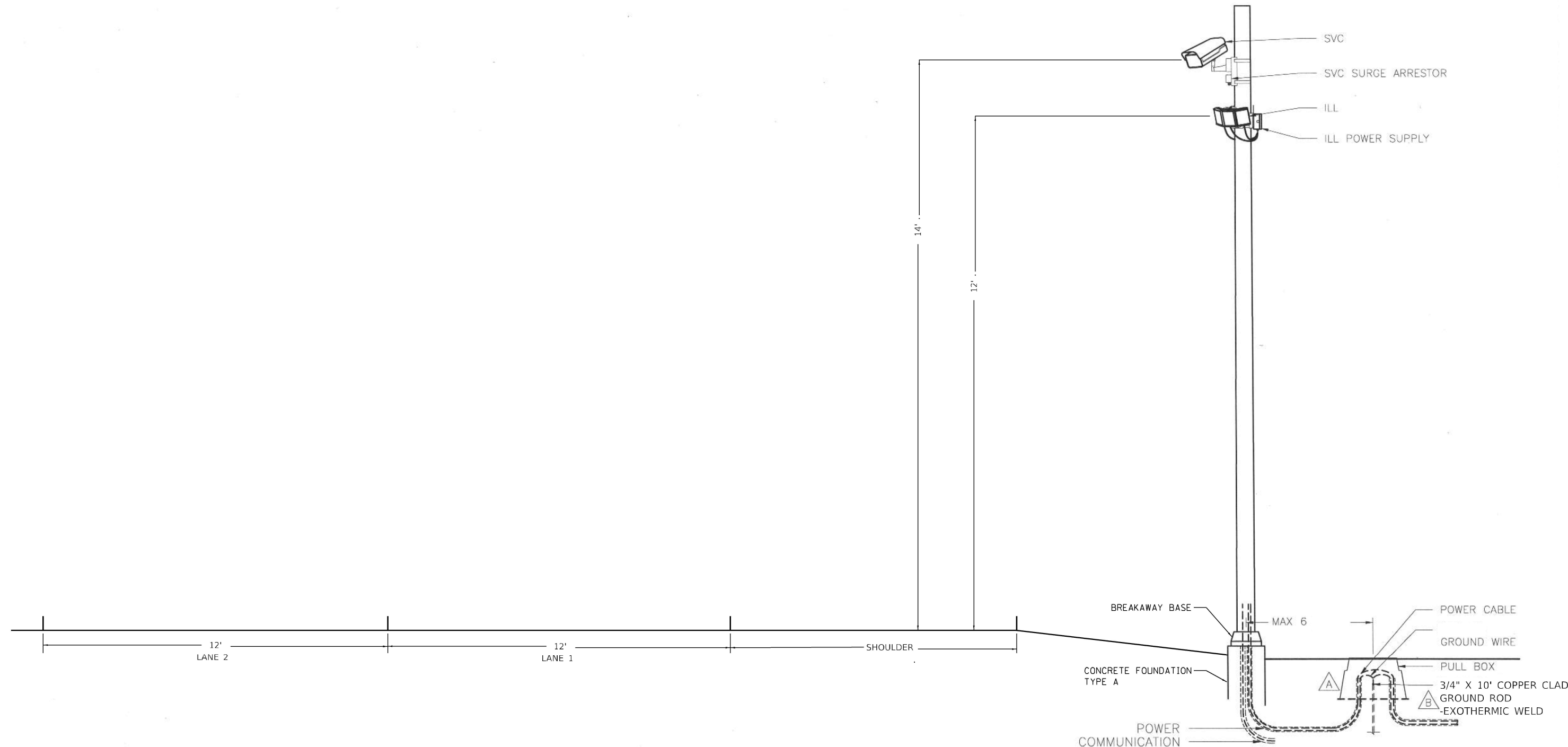
STATE OF ILLINOIS  
DEPARTMENT OF TRANSPORTATION

FAI ROUTE 72 (I-72)  
WEIGH IN MOTION DETAILS

SCALE: N.T.S. SHEET 5 OF 13 SHEETS STA. TO STA.

F.A.I. RTE.	SECTION	COUNTY	TOTAL SHEETS	SHEET NO.
72	75-4WS	PIKE	23	14
CONTRACT NO. 72736				
ILLINOIS FED. AID PROJECT				

DETAIL A – SVC POLE



NOTES: (THIS SHEET ONLY)

- A

EQUIPMENT SHOULD BE CONNECTED TO EARTH GROUND IN COMPLIANCE WITH NATIONAL ELECTRICAL CODE AND LOCAL STANDARDS.
- B

BOND POLE GROUND ROD TO CABINET GROUND BUS USING MINIMUM 6 AWG WIRE.
- C

DIMENSIONS ARE NOTED AS XX FORMAT. WHERE XX IS IN FEET.

SITE LAYOUT  
I-72 VIRTUAL WEIGHT STATION

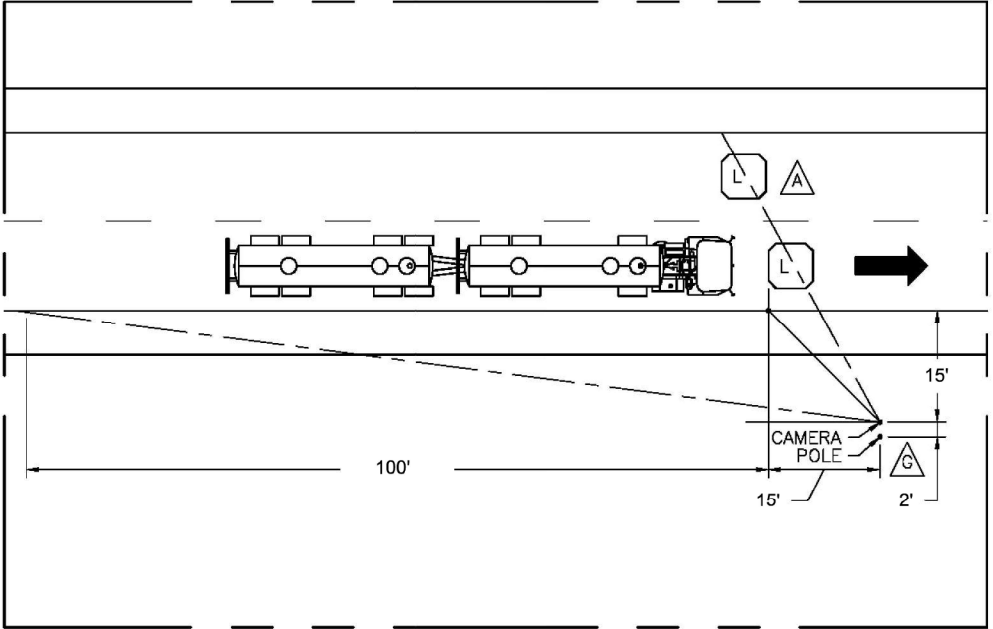
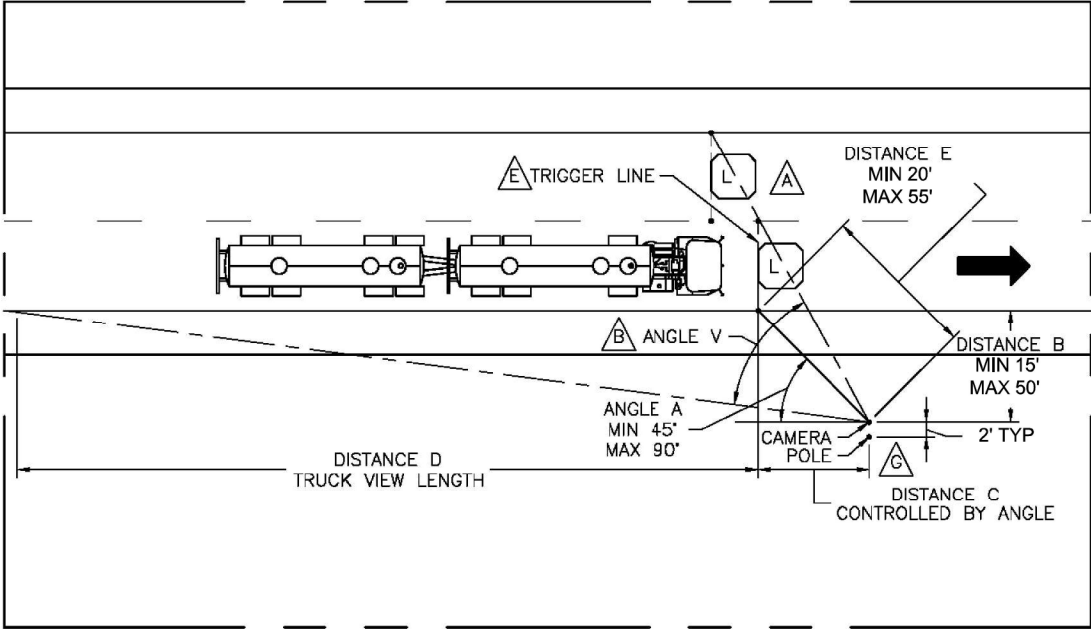
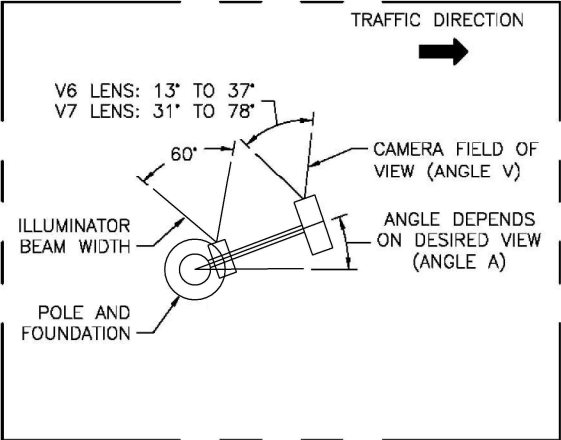
MODEL: Default  
FILE NAME: S:\Projects\3222 - IDOT PTB 208-53 Vw-Mtr PrairieProject-Work\WO1 - I72 VWMCAD\DWG\Sheet\DWG72736-svc-detail-11-15-24.dgn

<div><div>TranSmart</div><div>100 S. Wacker Drive Suite 400 Chicago, IL 60606</div><div>anATLASCompany</div></div>	USER NAME = dmeier		DESIGNED - DJM	REVISED -	STATE OF ILLINOIS DEPARTMENT OF TRANSPORTATION	FAI ROUTE 72 (I-72) WEIGH IN MOTION DETAILS			F.A.I. RTE.	SECTION	COUNTY	TOTAL SHEETS	SHEET NO.
	DRAWN - DJM		DRAWN - DJM	REVISED -					72	75-4WS	PIKE	23	15
	PLOT SCALE = 2.0000 ' / in.		CHECKED - REL	REVISED -		SCALE: N.T.S.			CONTRACT NO. 72736				
	PLOT DATE = 11/12/2024		DATE - 11/13/2024	REVISED -		SHEET 6 OF 13 SHEETS STA. TO STA.			ILLINOIS FED. AID PROJECT				

CAMERA/POLE GEOMETRY

TYPICAL LAYOUT

TOP VIEW



NOTES: (THIS SHEET ONLY)

- A** ADDITIONAL LANES MAY BE COVERED BY A SINGLE CAMERA. TRIGGER LOOPS IN ADJACENT LANES SHOULD BE IN-LINE WITH THE UPSTREAM EDGE OF THE CAMERA FIELD OF VIEW. **NOTE:** VEHICLES IN CLOSER LANE MAY BE BLOCKED BY THE VEHICLES IN FARTHER LANES.
- B** ANGLE V IS CONTROLLED BY CAMERA ZOOM. SEE TOP VIEW.
- C** DISTANCE E LIMITED BY ILLUMINATOR RANGE
- $E = \sqrt{B^2 + C^2}$
- D** FOR NON-TYPICAL LAYOUTS, USE 3EGR0015 - SIDE FIRE CAMERA POSITION CALCULATOR TO POSITION CAMERA.
- E** IMAGE CAPTURE TO BE TRIGGERED BY LEADING EDGE OF LOOP SIGNAL.
- F** THE "IDENTIFICATION" VIEW CONFIGURATION PROVIDES AN ENHANCED VIEW OF THE TRACTOR CAB COMPARED TO THE REST OF THE TRUCK. THIS CONFIGURATION IS RECOMMENDED AS IT ALLOWS FOR BETTER VEHICLE IDENTIFICATION. THE "CLASSIFICATION" VIEW PROVIDES A LESS DISTORTED VIEW OF THE ENTIRE TRUCK; IDEAL FOR IDENTIFICATION OF VEHICLE CLASS.
- G** POLE TO BE POSITIONED AWAY FROM CAMERA LOCATION TO ACCOUNT FOR CAMERA LENS/POLE OFFSET.

CONFIGURATION TYPE	DISTANCE				ANGLE	
	B	C	D	E	A	V
IDENTIFICATION VIEW (RECOMMENDED)	15'	15'	100'	21.2'	45°	54°
CLASSIFICATION VIEW (OPTIONAL)	30'	20'	100'	36.1'	56°	51°

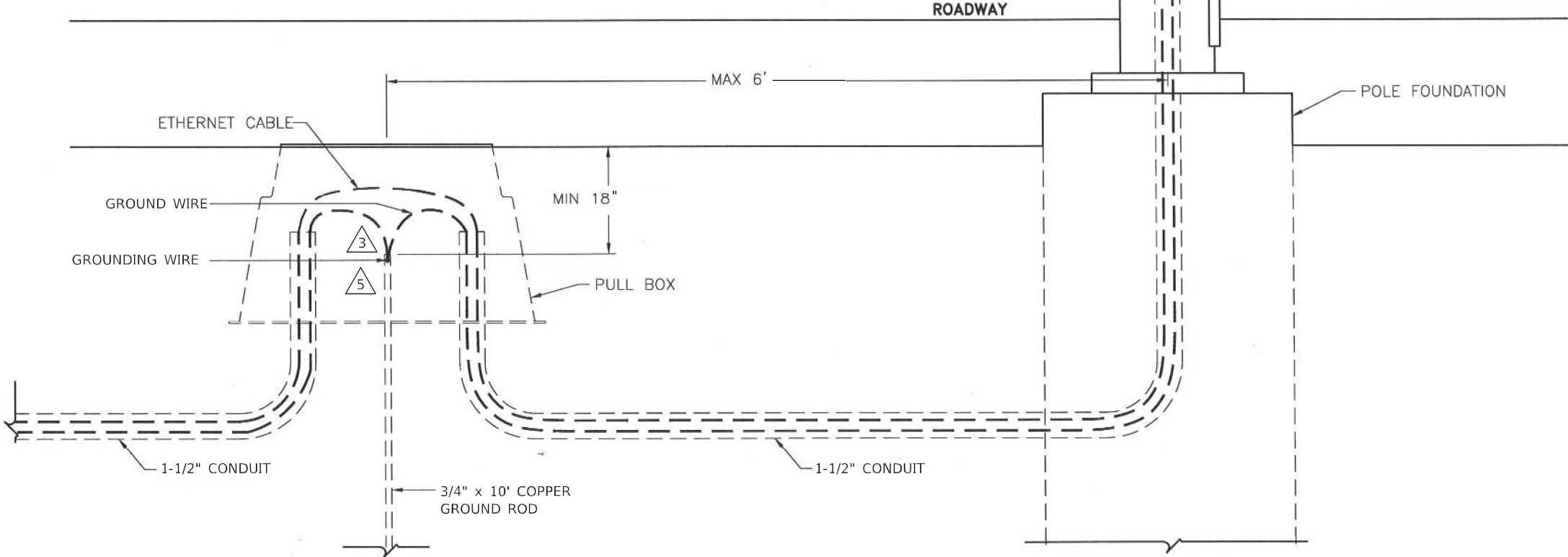
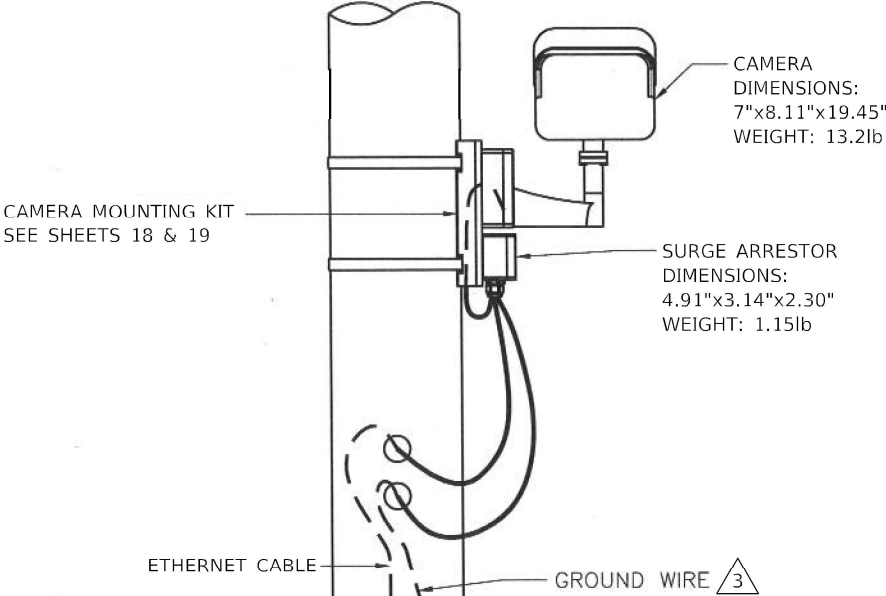
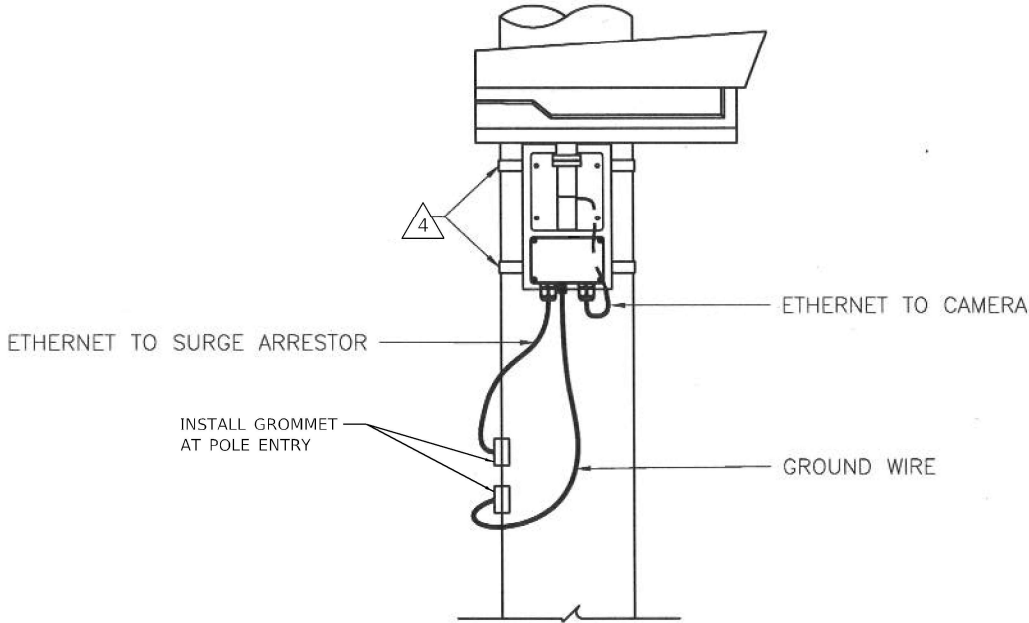
SITE LAYOUT

SIDE FIRE CAMERA WITH ILLUMINATOR

MODEL: Default  
FILE NAME: S:\Projects\2322 - IDOT PTB 208-53 Voz-Nor Prairie\Project-Work\W01 - I72 VOTM\CADD\CADD Sheets\I72736-sheet\I72736-07.dgn

SIDE VIEW

REAR VIEW – FACING ROADWAY



NOTES:

- 1 CAMERA AND BRACKET WEIGHT: 15.8lbs
- 2 CONDUITS TO MEET LOCAL ELECTRIC CODE.
- 3 EQUIPMENT TO BE CONNECTED TO EARTH GROUND IN COMPLIANCE WITH NATIONAL ELECTRICAL CODE AND LOCAL STANDARDS.
- 4 USE 3/4" STAINLESS STEEL BANDING AND BUCKLES WITH MOUNTING BRACKET ON THE POLE.
- 5 BOND POLE GROUND ROD TO CABINET GROUND BUS USING MINIMUM 6 AWG WIRE.

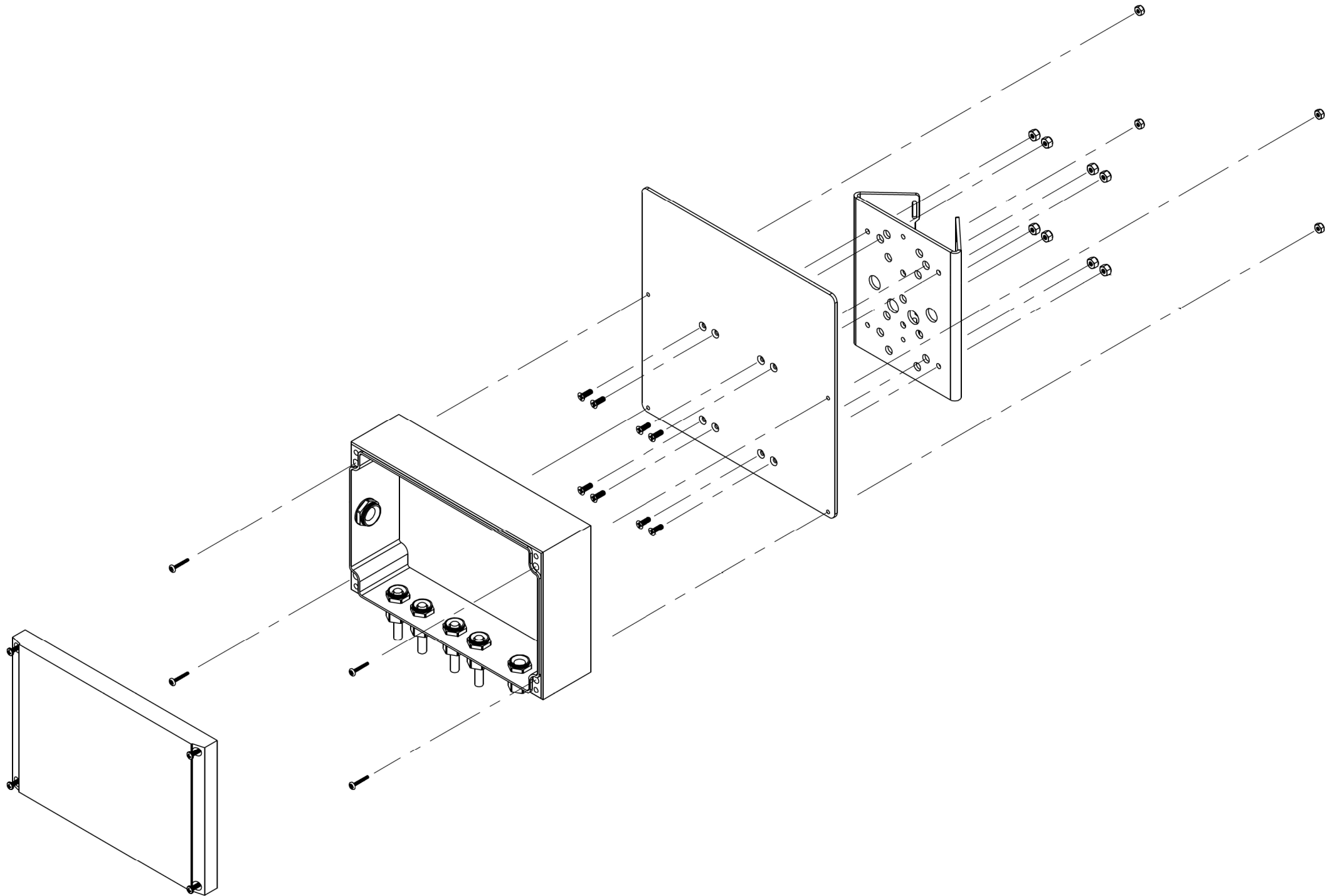
SIDE OF POLE  
SIDE VIEW OVERVIEW  
CAMERA IMAGING SYSTEM

MODEL: Default  
FILE NAME: 331-Projects03222 - IDOT PTB 208-53 Voz-Nor PrairieProject-Work\W01 - I72 VVIMCADD\CADD Sheets\ID677736-sheet-detailed-Hrs-08.dgn

<div>TranSmart</div> <div>inATLASCompany</div> <div>100 S. Wacker Drive Suite 400 Chicago, IL 60606</div>	USER NAME = dmeier		DESIGNED - DJM	REVISED -	STATE OF ILLINOIS DEPARTMENT OF TRANSPORTATION	FAI ROUTE 72 (I-72) WEIGH IN MOTION DETAILS				F.A.I. RTE.	SECTION	COUNTY	TOTAL SHEETS	SHEET NO.
	DRAWN - DJM		CHECKED - REL	REVISED -		SCALE: N.T.S.				72	75-4WS	PIKE	23	17
	PLOT SCALE = 2.0000 ' / in.		DATE - 11/13/2024	REVISED -		SHEET 8 OF 13 SHEETS				CONTRACT NO. 72736				
	PLOT DATE = 11/12/2024					TO STA.				ILLINOIS FED. AID PROJECT				



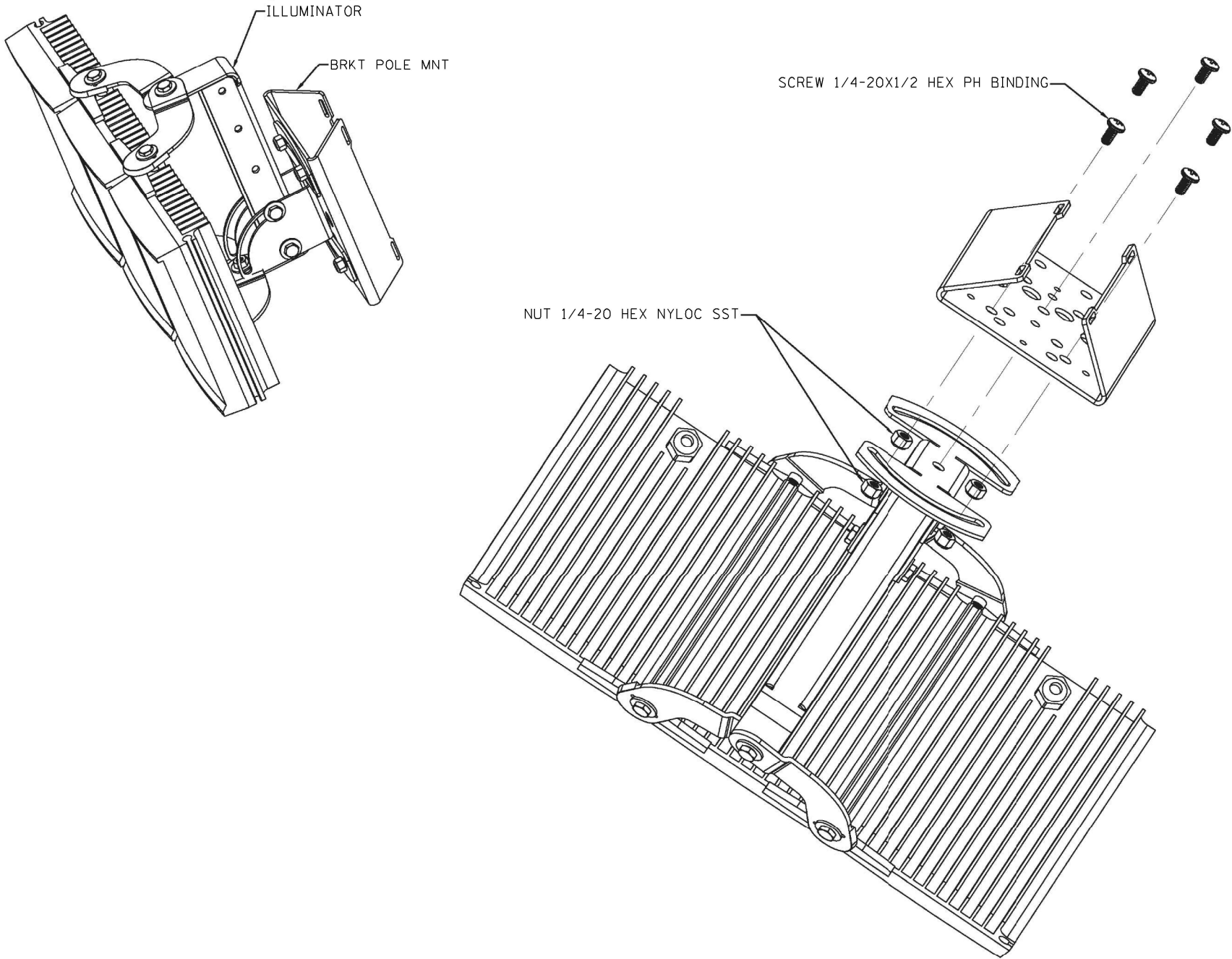
ILLUMINATOR POWER SUPPLY TO ADAPTER PLATE AND POLE MOUNT BRACKET



MODEL: Default  
FILE NAME: S:\Projects\3222 - IDOT PTB 208-53 Vio-Vio-Prarie\Project-Work\WO1 - I72 VVIMCADD\CADD Sheets\ID677736-sheet-detailed-fig-09.dgn

<div><div>TranSmart</div><div>an  Company</div></div> <div>100 S. Wacker Drive Suite 400 Chicago, IL 60606</div>	USER NAME = dmeier	DESIGNED - DJM	REVISED -	STATE OF ILLINOIS DEPARTMENT OF TRANSPORTATION	FAI ROUTE 72 (I-72) WEIGH IN MOTION DETAILS				F.A.I. RTE.	SECTION	COUNTY	TOTAL SHEETS	SHEET NO.				
		DRAWN - DJM	REVISED -		72	75-4WS	PIKE	23	18								
	PLOT SCALE = 2.0000 ' / in.	CHECKED - REL	REVISED -		SCALE: N.T.S.			SHEET 9	OF 13	SHEETS	STA.	TO STA.					
	PLOT DATE = 11/12/2024	DATE - 11/13/2024	REVISED -														
CONTRACT NO. 72736														ILLINOIS FED. AID PROJECT			

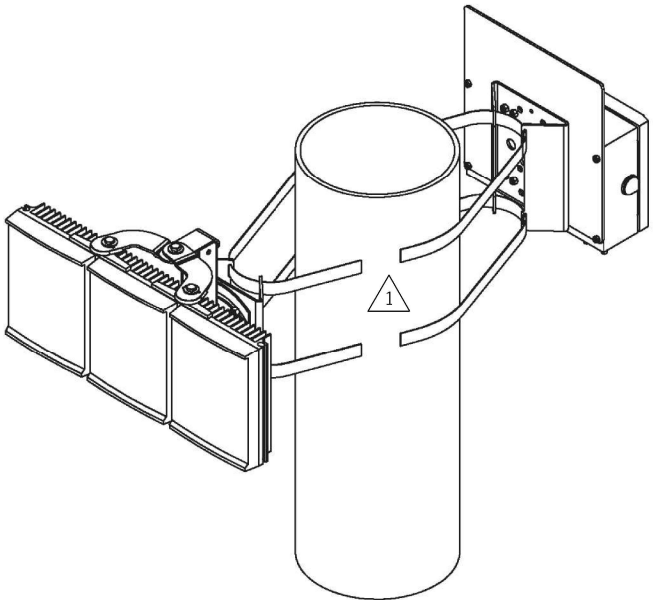
ASSEMBLE ILLUMINATOR TO POLE MOUNT BRACKET



MOUNT ASSEMBLIES TO POLE TO SUIT SITE CONDITIONS

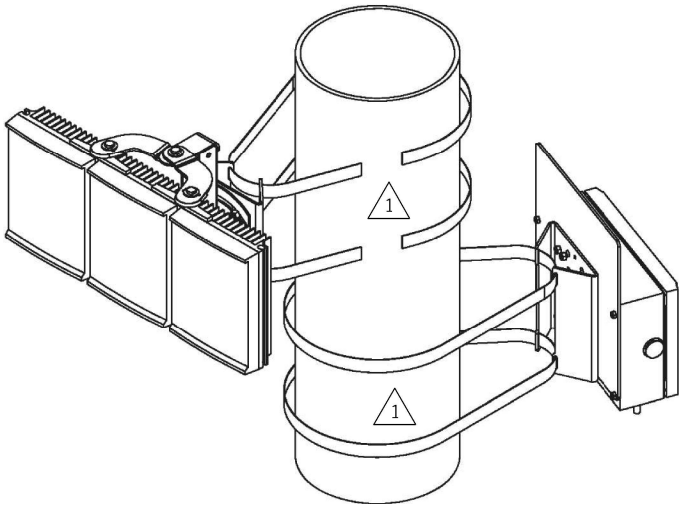
– ASSEMBLIES ON POLE USING SAME BANDING

ORIENT ANGLE TO EACH OTHER AS REQUIRED



STEP 3B – ORIENT ASSEMBLIES ON POLE AT DIFFERENT ELEVATIONS

ANGLE EACH ASSEMBLY ON POLE AS REQUIRED



RAYTEC VARIABLE ANGLE  
CVO SF ILLUMINATOR

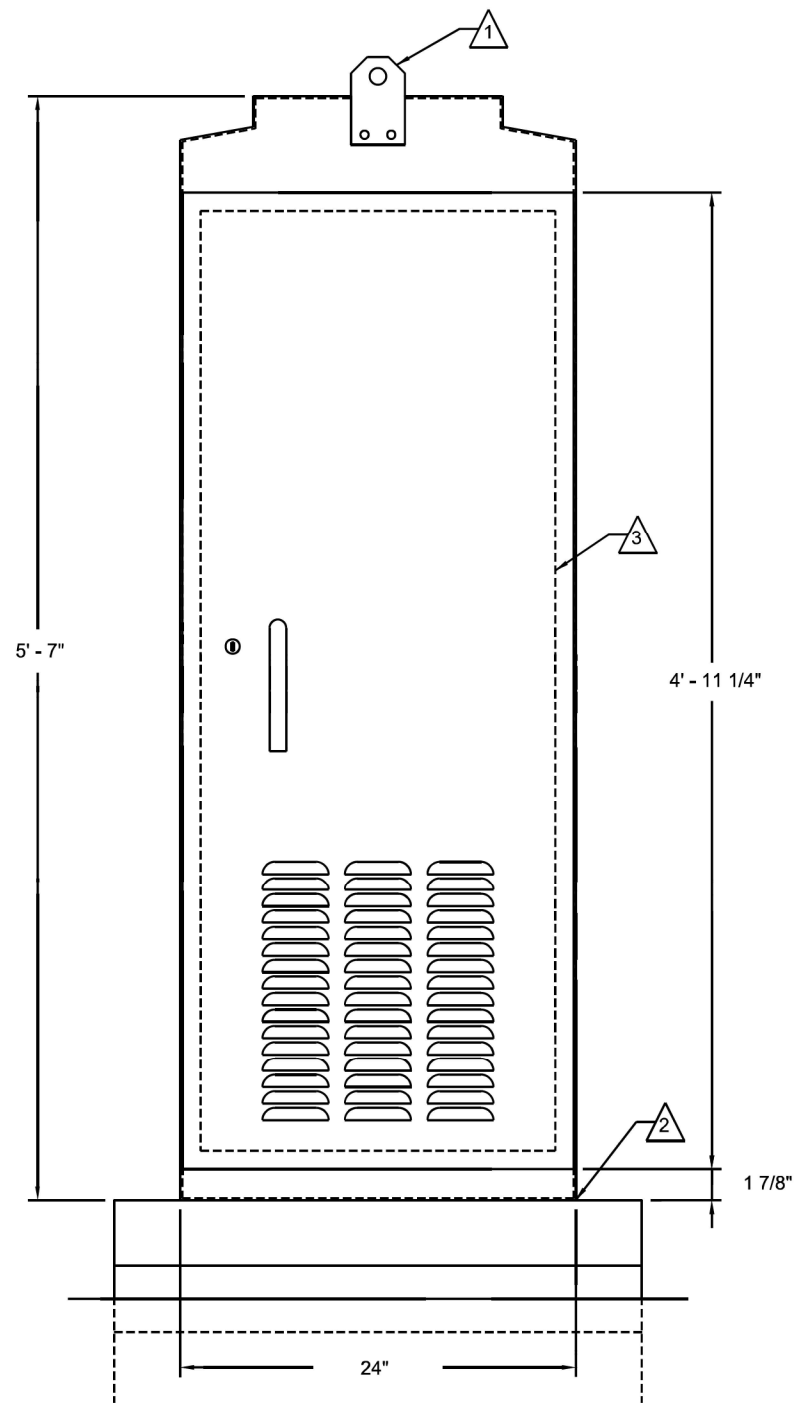
NOTES: (THIS SHEET ONLY)

1 USE 1/2" STAINLESS STEEL BANDING AND BUCKLES WITH MOUNTING BRACKET ON THE POLE. REFER TO BRACKET INSTALLATION INSTRUCTIONS AND LOCAL CODE FOR REQUIREMENTS.

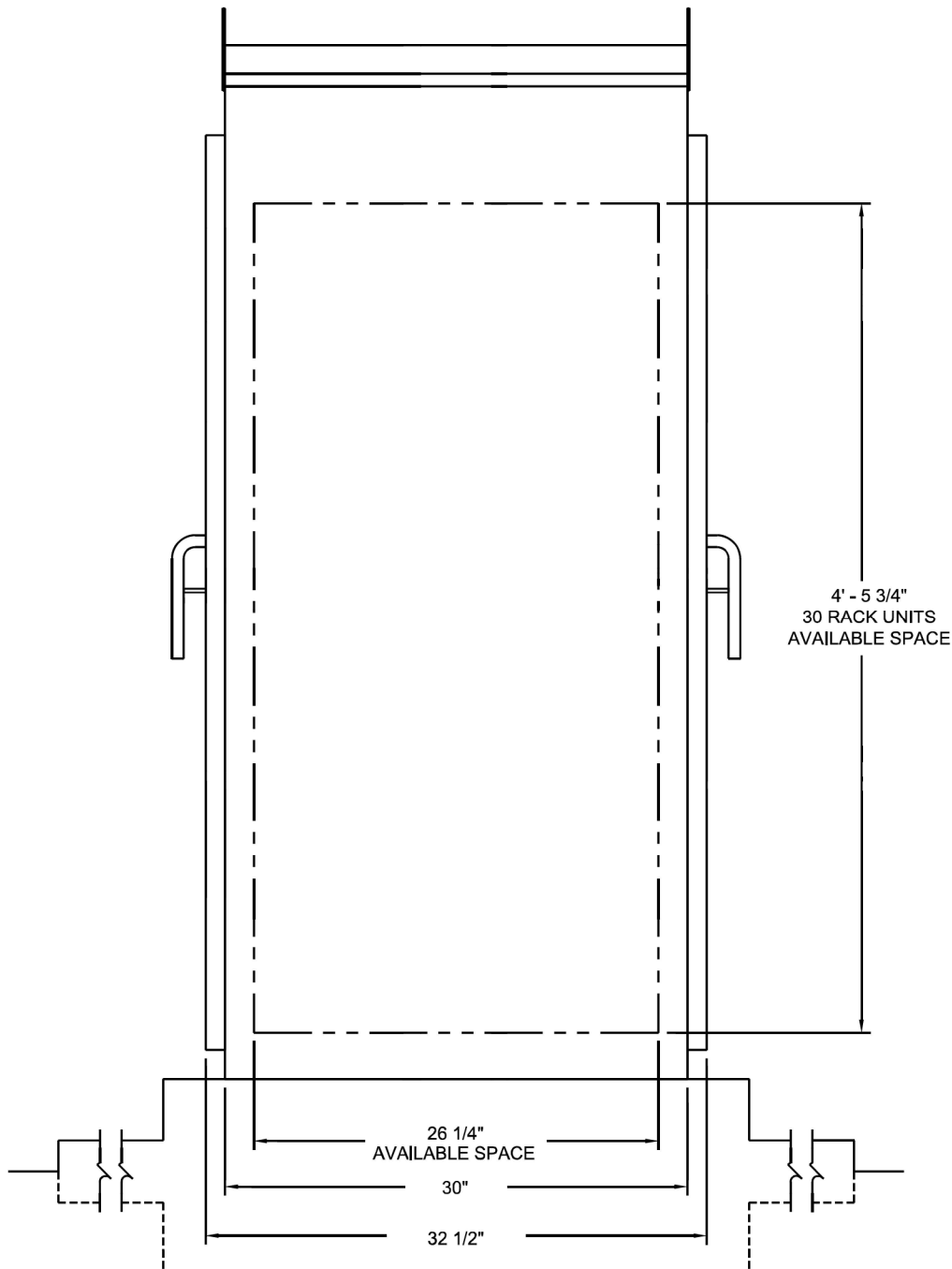
MODEL: Default  
FILE NAME: S:\Projects\2322 - IDOT PTB 208-53 Voz-Nor Prairie\Project Work\W01 - I72 VVIMCADD\CADD Sheets\ID677236-sheet11.rvt-10.dgn

<div><div>TranSmart</div><div>an  Company</div></div> <div>100 S. Wacker Drive Suite 400 Chicago, IL 60606</div>	USER NAME = dmeier		DESIGNED - DJM	REVISED -	STATE OF ILLINOIS DEPARTMENT OF TRANSPORTATION	FAI ROUTE 72 (I-72) WEIGH IN MOTION DETAILS					F.A.I. RTE.	SECTION	COUNTY	TOTAL SHEETS	SHEET NO.					
	DRAWN - DJM		CHECKED - REL	REVISED -		72					75-4WS	PIKE	23	19						
	PLOT SCALE = 2.0000 ' / in.		DATE - 11/13/2024	REVISED -		SCALE: N.T.S.					SHEET 10 OF 13 SHEETS					STA. TO STA.				
	PLOT DATE = 11/12/2024										ILLINOIS FED. AID PROJECT									
											CONTRACT NO. 72736									

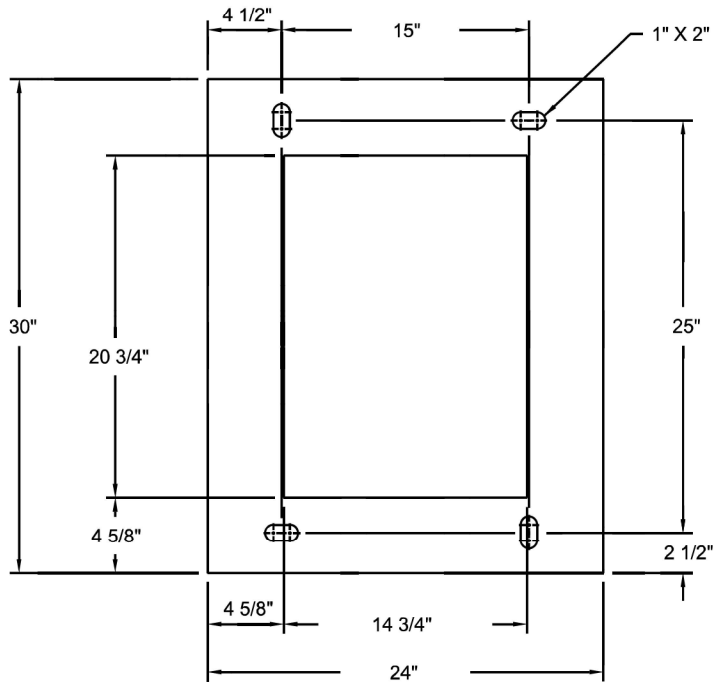
FRONT VIEW



SIDE VIEW



CABINET BASE BOLT PATTERN TEMPLATE



NOTES:

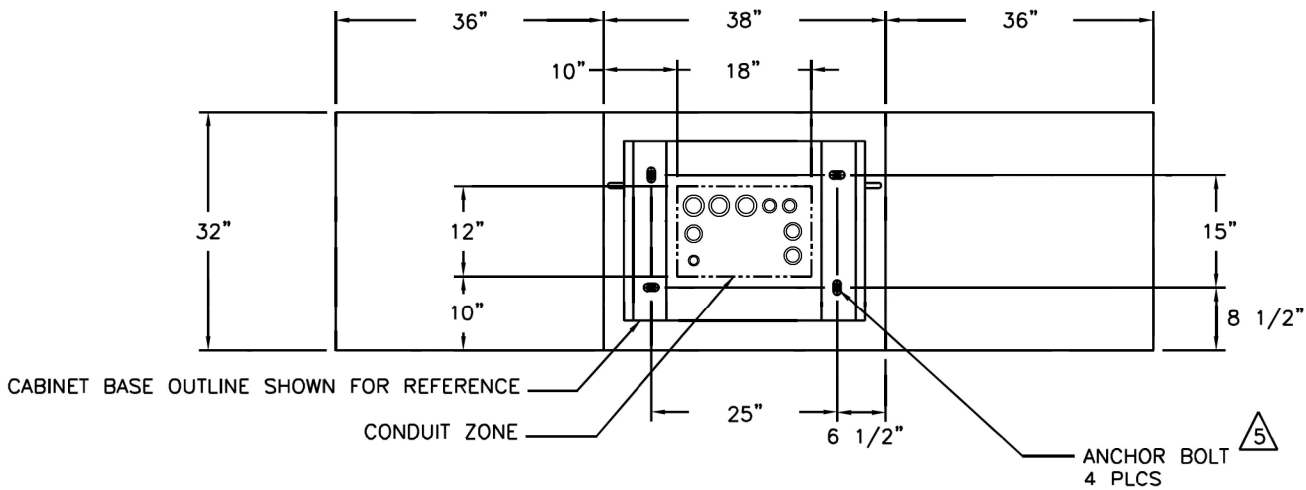
- 1 LIFTING EYE. MAY BE UNBOLTED AND ROTATED 180° FOR STORAGE.
- 2 SEAL CABINET TO FOUNDATION JOINT WITH SILICONE SEALANT TO PREVENT WATER INTRUSION. LOCATE CABINET ABOVE HIGH WATER LEVEL.
- 3 REMOVABLE 19" EIA RACK.

CABINET INSTALLATION

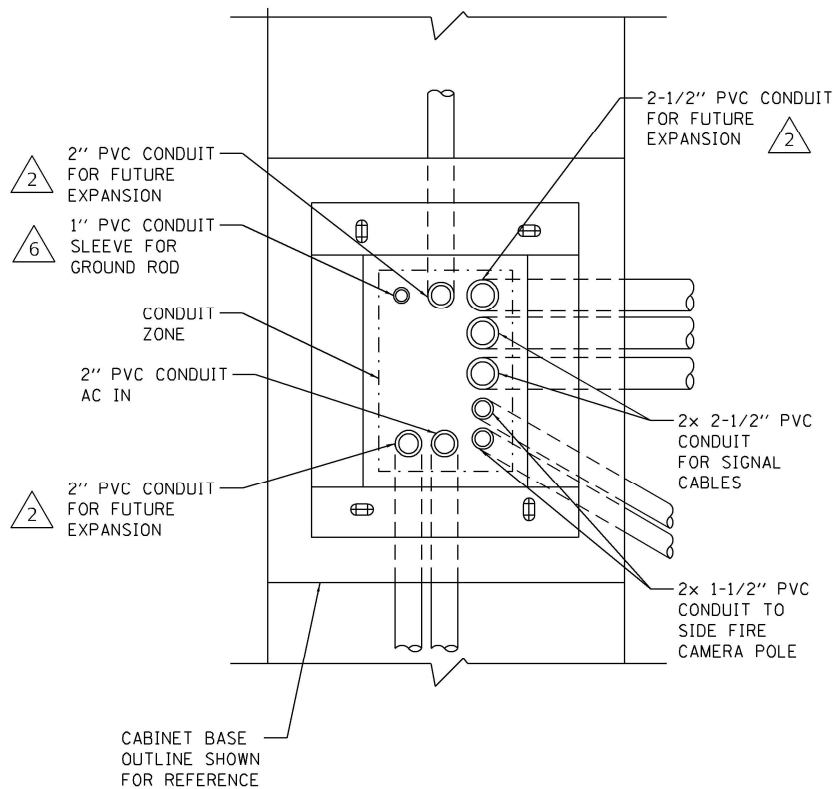
MODEL: Default  
FILE NAME: S:\Projects\0222 - IDOT PTB 208-53 Voz-Nor Prairie\Project - Work\W01 - I72 VVIMCADD\CADD Sheets\0677736-sheet.dwg  
DATE: 11/12/2024

<div><div><div>TranSmart</div><div>an  Company</div></div><div>100 S. Wacker Drive Suite 400 Chicago, IL 60606</div></div>	USER NAME = dmeier		DESIGNED - DJM	REVISED -	STATE OF ILLINOIS DEPARTMENT OF TRANSPORTATION	FAI ROUTE 72 (I-72) WEIGH IN MOTION DETAILS					F.A.I. RTE.	SECTION	COUNTY	TOTAL SHEETS	SHEET NO.
	DRAWN - DJM		CHECKED - REL	REVISED -		72	75-4WS	PIKE	23	20					
	PLOT SCALE = 2.0000 ' / in.		DATE - 11/13/2024	REVISED -		CONTRACT NO. 72736									
	PLOT DATE = 11/12/2024					ILLINOIS FED. AID PROJECT									
				SCALE: N.T.S.					SHEET 11	OF 13	SHEETS	STA.	TO STA.		

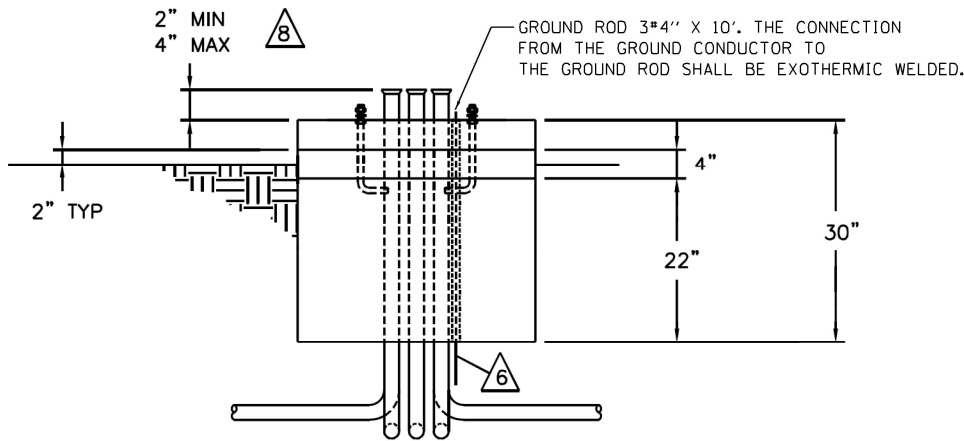
TOP VIEW - CABINET MOUNTING



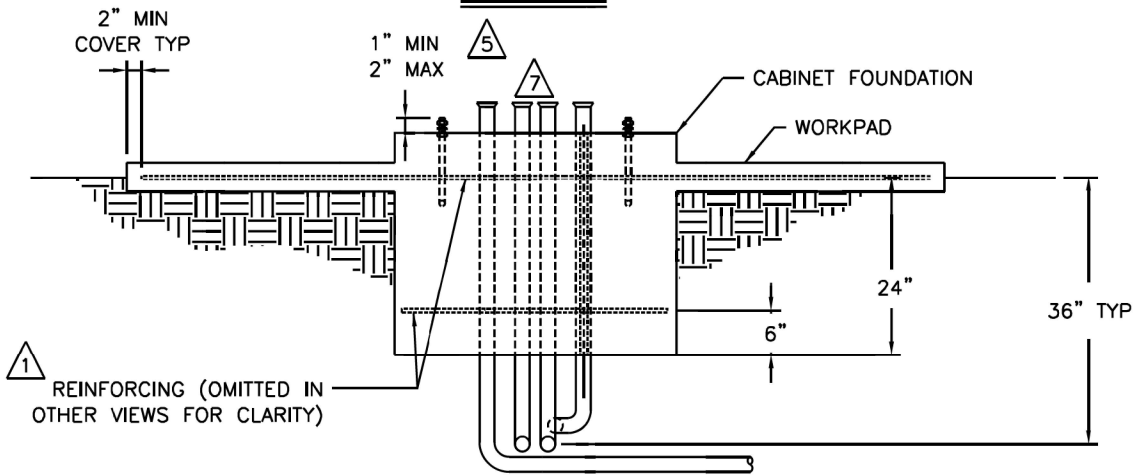
DETAIL A - MINIMUM CONDUITS



FRONT VIEW



SIDE VIEW



NOTES:

1. INSTALL REINFORCING MATS. #4 BAR 12" ON CENTER EACH WAY. EPOXY COAT OR GALVANIZE. REINFORCEMENTS ARE MINIMUM REQUIREMENTS AND MAY BE SUPERSEDED BY LOCAL CONSTRUCTION CODES.
2. SPARE CONDUITS MUST BE CAPPED, STUBBED 24" PAST FOUNDATION, AND LABELED.
3. ALL CONDUITS SHOWN SHALL BE FURNISHED AND INSTALLED IN FOUNDATION IN ACCORDANCE WITH LOCAL CODES. CAP IF NOT USED. CONDUITS SHALL EXIT FOUNDATION IN DIRECTION APPROPRIATE FOR SITE GEOMETRY.
4. CONCRETE SHALL HAVE COMPRESSIVE STRENGTH OF 3000 PSI MINIMUM.
5. CABINET ANCHORS MUST BE GALVANIZED OR STAINLESS STEEL AND MAY BE CAST IN PLACE, CHEMICAL OR EXPANSION TYPE DRILLED INTO BASE. TYPICAL SIZE IS 3/4" NC x 12" x 4".
6. GROUND ROD MUST BE PROVIDED TO MEET LOCAL ELECTRICAL CODE.
7. SEAL ALL CONDUIT ENDS WITH STEEL WOOL AND DUCT SEAL TO REDUCE RODENT OR INSECT INTRUSION AND MOISTURE. DO NOT USE PERMANENT SEALANT AS CONDUITS MAY NEED TO BE REENTERED IN THE FUTURE FOR CABLE REPLACEMENT OR ADDITIONS.

CABINET FOUNDATION INSTALLATION

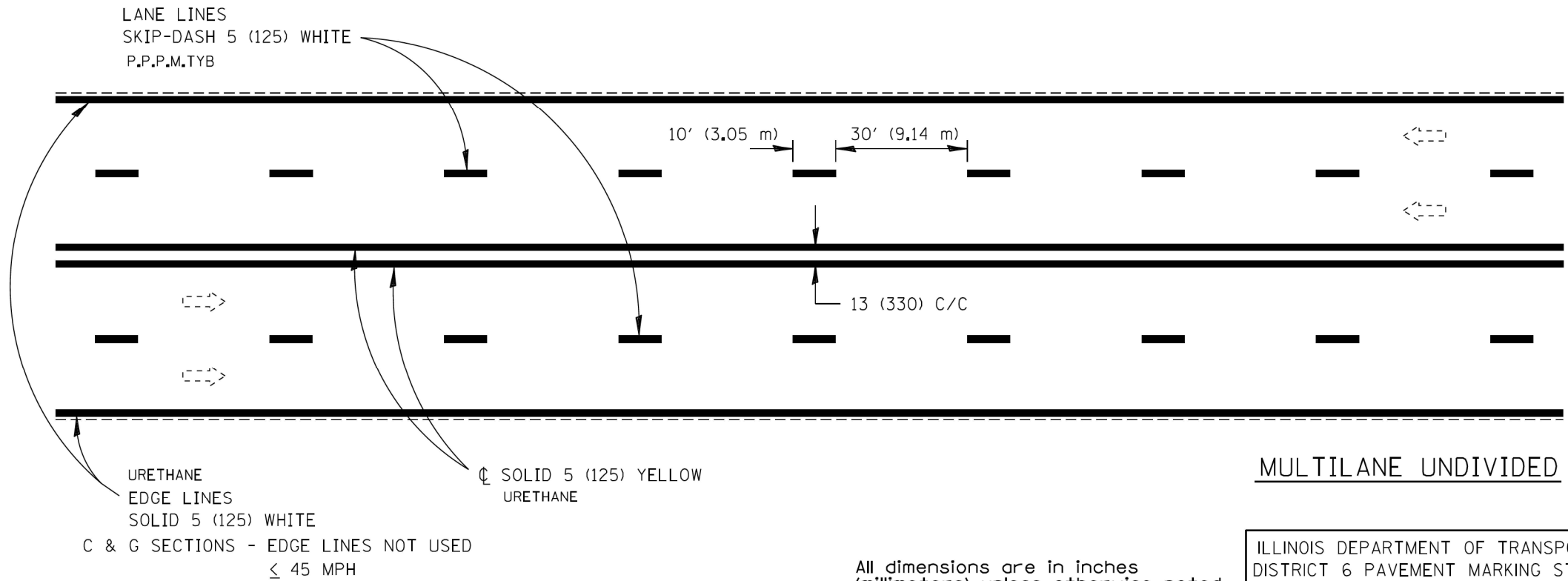
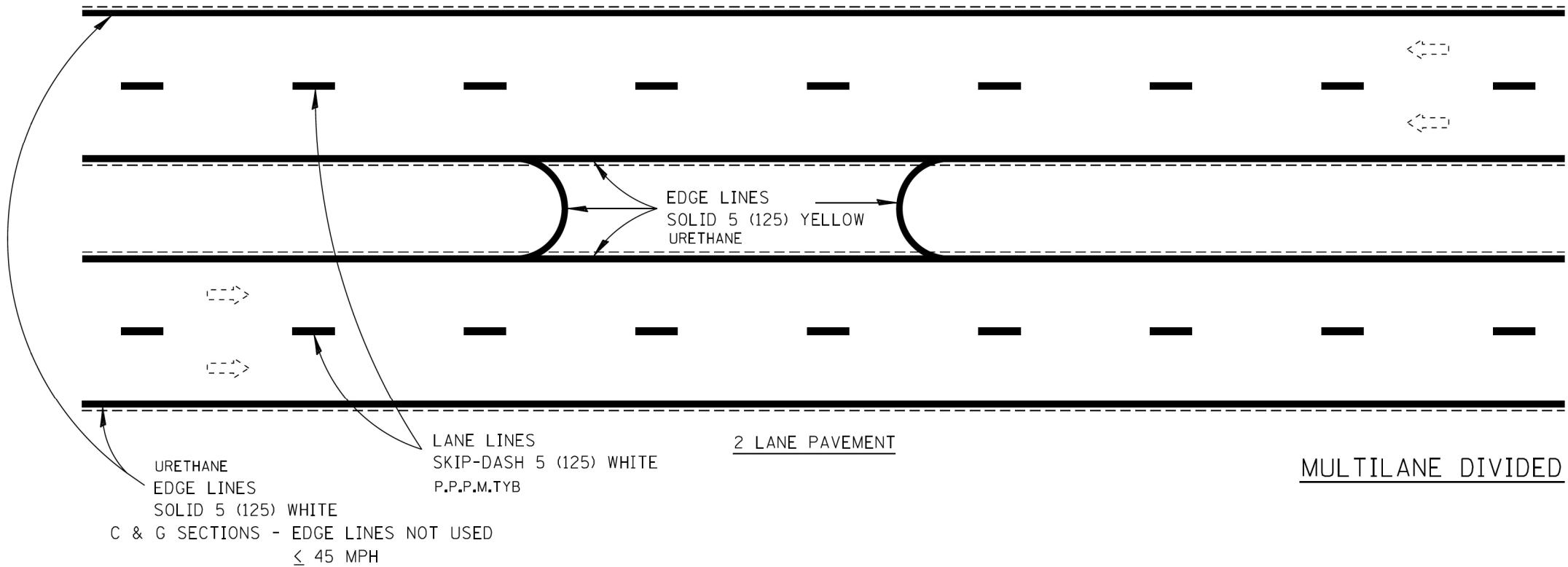
MODEL: Default  
FILE NAME: S:\Projects\03222 - IDOT PTB 208-53 Voz-Nor Prairie\Project Work\W01 - I72 VOTM\CADD\CADD Sheets\ID677736-she-detailed-fig-12.dgn

<div><div><div>TranSmart</div><div>an  Company</div></div><div>100 S. Wacker Drive Suite 400 Chicago, IL 60606</div></div>	USER NAME = dmeier		DESIGNED - DJM	REVISED -	STATE OF ILLINOIS DEPARTMENT OF TRANSPORTATION	FAI ROUTE 72 (I-72) WEIGH IN MOTION DETAILS					F.A.I. RTE.	SECTION	COUNTY	TOTAL SHEETS	SHEET NO.
	DRAWN - DJM		CHECKED - REL	REVISED -		72	75-4WS	PIKE	23	21					
	PLOT SCALE = 2.0000' / in.		DATE - 11/13/2024	REVISED -		CONTRACT NO. 72736									
	PLOT DATE = 11/12/2024					ILLINOIS FED. AID PROJECT									
SCALE: N.T.S.		SHEET 12 OF 13 SHEETS		STA.							TO STA.				





MODEL Default  
FILE Name: S:\Projects\2222 - IDOT PTB 206-53 Vot-Vor PrairieProject-Work\W01 - I72 VOTMCA\DD\CA\DD Sheets\I677736-sheet.dwg-01.dgn



D6PAVMRK.DGN  
•DGN-ONLY•

All dimensions are in inches  
(millimeters) unless otherwise noted.

ILLINOIS DEPARTMENT OF TRANSPORTATION  
DISTRICT 6 PAVEMENT MARKING STANDARDS  
DATE 2016-05 NOT TO SCALE

USER NAME = dmeier	DESIGNED - PWF	REVISED -
DRAWN - PWF	REVISOR -	
PLOT SCALE = 2.0000 ' / in.	CHECKED - KJC	REVISED -
PLOT DATE = 11/12/2024	DATE - 11/13/2024	REVISED -

FAI ROUTE 72 (I-72)			
DISTRICT 6 PAVEMENT MARKING STANDARDS			
SCALE: N.T.S.	SHEET	OF SHEETS	STA. TO STA.

F.A.I. RTE.	SECTION	COUNTY	TOTAL SHEETS	SHEET NO.
72	75-4WS	PIKE	23	23
CONTRACT NO. 72736				
ILLINOIS FED. AID PROJECT				