

STATE OF ILLINOIS
DEPARTMENT OF TRANSPORTATION

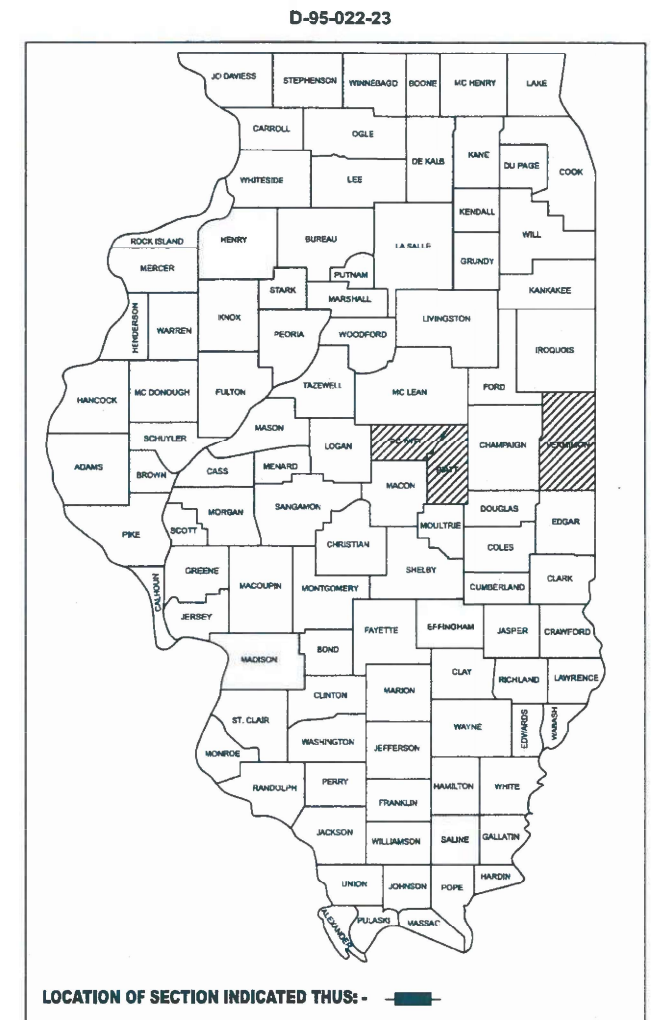
F.A. RTE.	SECTION	COUNTY	TOTAL SHEETS	SHEET NO.
N/A	CAP IMP 2025-1		13	1
*DEWITT, VERMILION, PIATT ILLINOIS		CONTRACT NO. 70G42		

FOR INDEX OF SHEETS, SEE SHEET NO. 2
FOR SUMMARY OF QUANTITIES, SEE SHEET NO. 3

PROPOSED
HIGHWAY PLANS

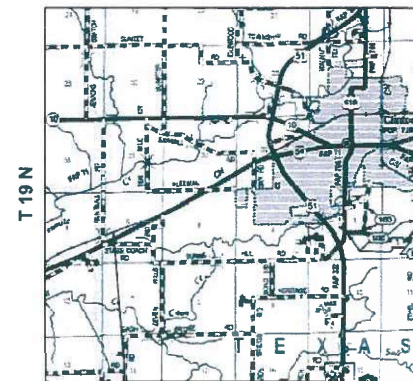
CLINTON, MONTICELLO, FITHIAN STORAGE FACILITIES
SECTION CAP IMP 2025-1
MISCELLANEOUS PROJECTS
PUSH WALL AT STORAGE FACILITIES
DEWITT, VERMILION, PIATT COUNTIES

C-95-036-23



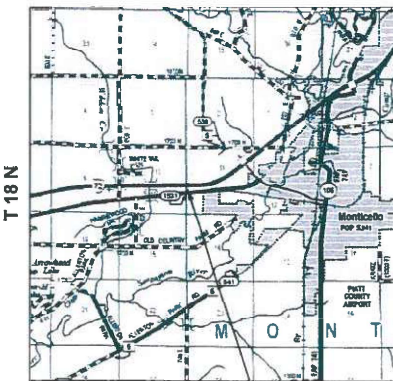
PROJECT LOCATIONS:

TOWNSHIP: CLINTON



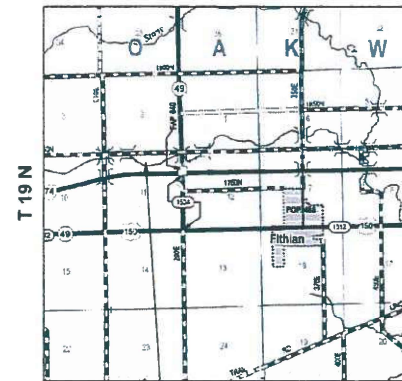
CLINTON STORAGE FACILITY
6151 STATE HIGHWAY 54
CLINTON, IL 61727

TOWNSHIP: MONTICELLO

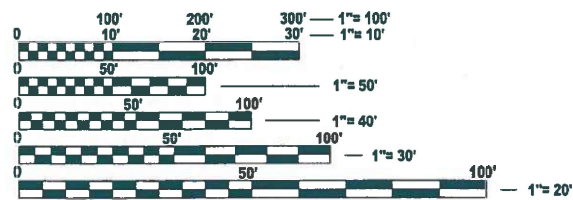


MONTICELLO STORAGE FACILITY
676-E OLD ROUTE 47
MONTICELLO, IL 61856

TOWNSHIP: FITHIAN



FITHIAN STORAGE FACILITY
1518 E 1800 NORTH ROAD
FITHIAN, IL 61844



FULL SIZE PLANS HAVE BEEN PREPARED USING STANDARD ENGINEERING SCALES. REDUCED SIZED PLANS WILL NOT CONFORM TO STANDARD SCALES. IN MAKING MEASUREMENTS ON REDUCED PLANS, THE ABOVE SCALES MAY BE USED.

J.U.L.I.E.
JOINT UTILITY LOCATION INFORMATION FOR EXCAVATION
1-800-892-0123
OR 811

PROJECT ENGINEER: JASON STULTS, P.E.
PROJECT MANAGER: JASON GOBLE
PHONE: (217) 465-4181
CONTRACT NO. 70G42

BA BENTON & ASSOCIATES, INC.
CONSULTING ENGINEERS - LAND SURVEYORS
1970 WEST LAGRETTA AVE.
JACKSONVILLE, IL 62550
PHONE: 217-224-4100 FAX: 217-224-4119
IL DESIGN FIRM REGISTRATION NO. 154-000952



GROSS LENGTH = N/A FT. = N/A MILE
NET LENGTH = N/A FT. = N/A MILE
N.T.S. (ALL MAPS)

MATTHEW B. HARDY
081-007375
LICENSED CIVIL ENGINEER
OF ILLINOIS
EXPIRES 11/30/2026

DREW S. RUHOLL
062-070688
LICENSED PROFESSIONAL ENGINEER
OF ILLINOIS
EXPIRES 11/30/2025

STATE OF ILLINOIS
DEPARTMENT OF TRANSPORTATION

SUBMITTED 11/26 20 24
Kenneth A. Barnett, P.E.
REGIONAL ENGINEER

January 31 20 25
[Signature]
ENGINEER OF DESIGN AND ENVIRONMENT

January 31 20 25
[Signature]
DIRECTOR OF HIGHWAYS PROJECT IMPLEMENTATION

PRINTED BY THE AUTHORITY
OF THE STATE OF ILLINOIS

INDEX OF SHEETS

1	COVER SHEET
2	INDEX OF SHEETS, HIGHWAY STANDARDS, GENERAL NOTES AND COMMITMENTS
3	SUMMARY OF QUANTITIES
4	SCHEDULE OF QUANTITIES
5-7	OVERALL SITE PLANS
8-10	ENLARGED SITE PLANS
11-13	PUSHWALL DETAILS

HIGHWAY STANDARDS

000001-08	STANDARD SYMBOLS, ABBREVIATIONS AND PATTERNS
001001-02	AREAS OF REINFORCEMENT BARS
001006	DECIMAL OF AN INCH AND OF A FOOT
701901-10	TRAFFIC CONTROL DEVICES
420001-10	PAVEMENT JOINTS

COMMITMENTS

THERE ARE NO COMMITMENTS FOR THIS CONTRACT

GENERAL NOTES

G.N.-105,09A

ALL ELEVATIONS SHOWN IN THE PLANS ARE BASED ON NORTH AMERICAN VERTICAL DATUM OF 1988.
(NAVD 88)

BENCHMARKS

CLINTON	GPS CONTROL POINT 500 ON SE SIDE OF SITE NEAR EXISTING FENCE. ELEV = 738.738
MONTICELLO	MONUMENT POINT 500 ON NE CORNER OF SITE BETWEEN EXISTING DITCH LINE AND FENCE. ELEV = 671.161
FITHIAN	MONUMENT POINT F1000 ON SW CORNER OF SITE NEAR EXISTING FENCE. ELEV = 662.780

MODEL: Index Sheet [Sheet]
FILE NAME: F:\Projects\50 [DOT]50_146B24_PTB_203_035_WO 6_D5_Salt Dome_Push Walls (Benton)\Drawings\Sheets\Index Sheet.dgn



USER NAME = Tyler	DESIGNED -	REVISED -
	DRAWN -	REVISED -
PLOT SCALE = 0.16666633' / in.	CHECKED -	REVISED -
PLOT DATE = 10/16/2024	DATE -	REVISED -

STATE OF ILLINOIS
DEPARTMENT OF TRANSPORTATION

INDEX OF SHEETS, HIGHWAY STANDARDS, GENERAL NOTES, & COMMITMENTS

SCALE: NTS SHEET 1 OF 1 SHEETS STA. N/A TO STA. N/A

F.A. RTE.	SECTION	COUNTY	TOTAL SHEETS	SHEET NO.
N/A	CAP IMP 2025-1	*	13	2
*DEWITT, VERMILION, PIATT			CONTRACT NO. 70G42	
ILLINOIS			FED. AID PROJECT	

SUMMARY OF QUANTITIES

CODE NO .	ITEM	UNIT	TOTAL QUANTITY	CONSTRUCTION CODE		
				DEWITT COUNTY STATE 100%	PIATT COUNTY STATE 100%	VERMILION COUNTY STATE 100%
				CLINTON	MONTICELLO	FITHIAN
				0044 RURAL	0044 RURAL	0044 RURAL
44000100	PAVEMENT REMOVAL	SQ YD	609	171	261	177
50200100	STRUCTURE EXCAVATION	CU YD	196	52	60	84
50300225	CONCRETE STRUCTURES	CU YD	231.0	69.2	89.2	72.6
50800205	REINFORCEMENT BARS, EPOXY COATED	POUND	9750	3180	3210	3360
* 66900200	NON-SPECIAL WASTE DISPOSAL	CU YD	200	50	50	100
* 66900530	SOIL DISPOSAL ANALYSIS	EACH	2	1	1	
* 66901001	REGULATED SUBSTANCES PRE-CONSTRUCTION PLAN	L SUM	1	0.34	0.33	0.33
* 66901003	REGULATED SUBSTANCES FINAL CONSTRUCTION REPORT	L SUM	1	0.34	0.33	0.33
* 66901006	REGULATED SUBSTANCES MONITORING	CAL DA	3	1	1	1
67100100	MOBILIZATION	L SUM	1	0.34	0.33	0.33
Z0013798	CONSTRUCTION LAYOUT	L SUM	1	0.34	0.33	0.33

* DENOTES SPECIALTY ITEM

MODEL: Summary of Quantities (Sheet)
FILE NAME: F:\Projects\50 IDOT\50.148B.24_PTB_203_035.WO.6_D5_Salt_Dome_Push_Walls_(Bentco)\Drawings\Sheets\Quantities Sheets.dgn



USER NAME = Tyler	DESIGNED -	REVISED -
	DRAWN -	REVISED -
PLOT SCALE = 0.16666633' / in.	CHECKED -	REVISED -
PLOT DATE = 10/16/2024	DATE -	REVISED -

**STATE OF ILLINOIS
DEPARTMENT OF TRANSPORTATION**

SUMMARY OF QUANTITIES

SCALE: NTS SHEET 1 OF 1 SHEETS STA. N/A TO STA. N/A

F.A. RTE.	SECTION	COUNTY	TOTAL SHEETS	SHEET NO.
N/A	CAP IMP 2025-1	*	13	3
*DEWITT, VERMLION, PIATT		CONTRACT NO. 70G42		
ILLINOIS FED. AID PROJECT				

SCHEDULE OF QUANTITIES

44000100 - PAVEMENT REMOVAL			
LOCATION	QUANTITY	UNIT	TYPE
CLINTON	171.0	SQ YD	ASPHALT
MONTICELLO	191.4	SQ YD	ASPHALT
MONTICELLO	69.4	SQ YD	CONCRETE
FITHIAN	177.4	SQ YD	ASPHALT
TOTAL	609.2	SQ YD	
USE	609	SQ YD	

50200100 - STRUCTURE EXCAVATION		
LOCATION	QUANTITY	UNIT
CLINTON	52.3	CU YD
MONTICELLO	59.9	CU YD
FITHIAN	83.6	CU YD
TOTAL	195.8	CU YD
USE	196	CU YD

50300225 - CONCRETE STRUCTURES			
LOCATION	QUANTITY	UNIT	COMMENT
CLINTON	32.4	CU YD	FOOTING/WALL
CLINTON	36.8	CU YD	SLAB
MONTICELLO	32.6	CU YD	FOOTING/WALL
MONTICELLO	56.6	CU YD	SLAB
FITHIAN	33.9	CU YD	FOOTING/WALL
FITHIAN	38.7	CU YD	SLAB
TOTAL	231.0	CU YD	
USE	231.0	CU YD	

50800205 - REINFORCEMENT BARS, EPOXY COATED		
LOCATION	QUANTITY	UNIT
CLINTON	3180	POUND
MONTICELLO	3210	POUND
FITHIAN	3360	POUND
TOTAL	9750	POUND
USE	9750	POUND

66900200 - NON-SPECIAL WASTE DISPOSAL		
LOCATION	QUANTITY	UNIT
CLINTON	50	CU YD
MONTICELLO	50	CU YD
FITHIAN	100	CU YD
TOTAL	200	CU YD
USE	200	CU YD

FINAL QT Y. SHALL EQUAL FINAL STRUCTURE EXCAVATION

MODEL: Schedule of Quantities (Sheet)
FILE NAME: F:\Projects\50 IDOT\50.146B.24_PTB.203.035.WO.6.D5.Salt.Dome.Push.Walls_(Bentor)\Drawings\Sheets\Quantities Sheets.dgn



USER NAME = Tyler	DESIGNED -	REVISED -
	DRAWN -	REVISED -
PLOT SCALE = 0.16666633' / in.	CHECKED -	REVISED -
PLOT DATE = 10/16/2024	DATE -	REVISED -

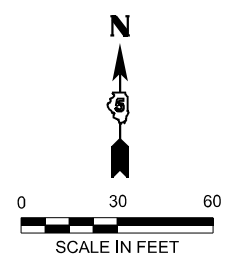
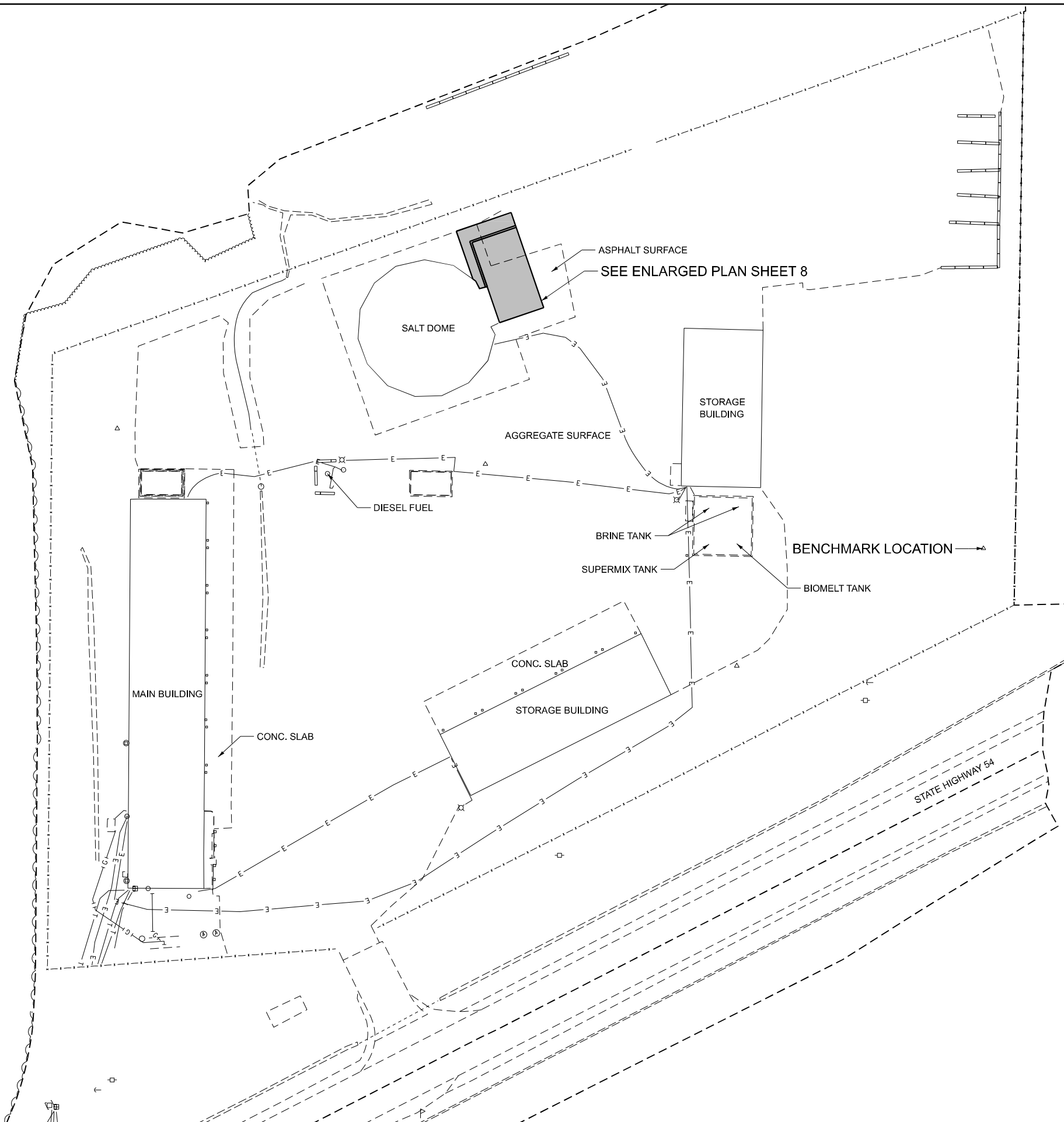
**STATE OF ILLINOIS
DEPARTMENT OF TRANSPORTATION**

SCHEDULE OF QUANTITIES

SCALE: NTS SHEET 1 OF 1 SHEETS STA. N/A TO STA. N/A

F.A. RTE.	SECTION	COUNTY	TOTAL SHEETS	SHEET NO.
N/A	CAP IMP 2025-1	*	13	4
*DEWITT, VERMLION, PIATT		CONTRACT NO. 70G42		
ILLINOIS FED. AID PROJECT				

MODEL: Clinton-sht30 scale Views [Sheet]
 FILE NAME: F:\Projects\50 DOT\50.148B.24_PTB 203_035_WO 6_D5 Salt Dome Push Walls (Benton)\Drawings\Medals\Clinton Named Boundaries.dgn



USER NAME = Tyler	DESIGNED -	REVISED -
	DRAWN -	REVISED -
PLOT SCALE = 0.16666833' / in.	CHECKED -	REVISED -
PLOT DATE = 9/5/2024	DATE -	REVISED -

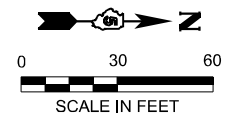
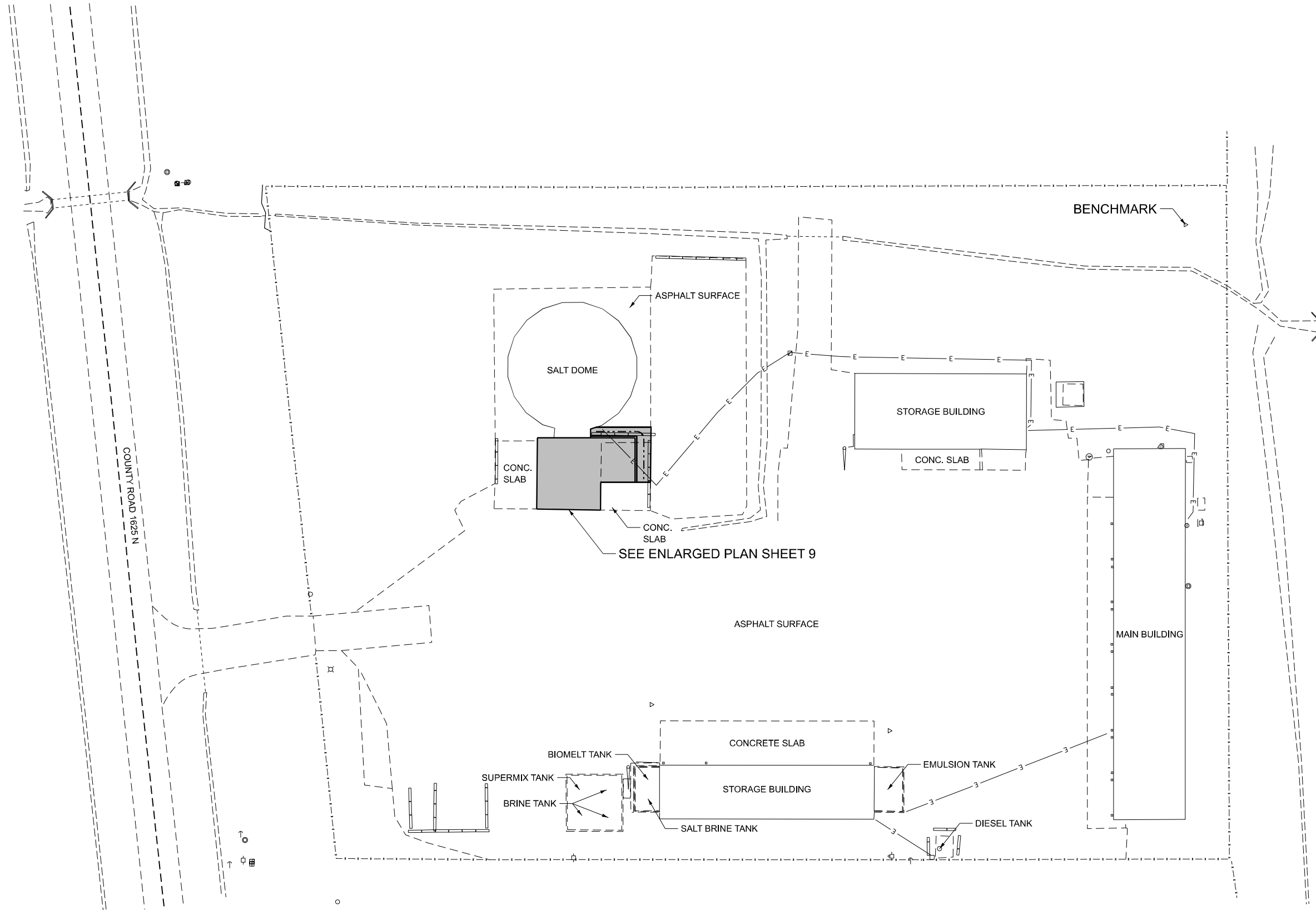
**STATE OF ILLINOIS
DEPARTMENT OF TRANSPORTATION**

**OVERALL PLAN
CLINTON STORAGE FACILITY**

SCALE: 1" = 30' SHEET 1 OF 3 SHEETS STA. N/A TO STA. N/A

F.A. RTE.	SECTION	COUNTY	TOTAL SHEETS	SHEET NO.
N/A	CAP IMP 2025-1	*	13	5
*DEWITT, VERMILION, PIATT			CONTRACT NO. 70G42	
ILLINOIS FED. AID PROJECT				

MODEL: Monticello-shh-20 scale (Sheet)
 FILE NAME: F:\Projects\50 IDOT\50.148B.24_PTB 203_035_WO 6_D5 Salt Dome Push Walls (Benton)\Drawings\Medals\Monticello Named Boundaries.dgn



USER NAME = Tyler	DESIGNED -	REVISED -
	DRAWN -	REVISED -
PLOT SCALE = 0.16666833' / in.	CHECKED -	REVISED -
PLOT DATE = 9/9/2024	DATE -	REVISED -

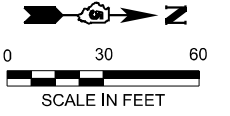
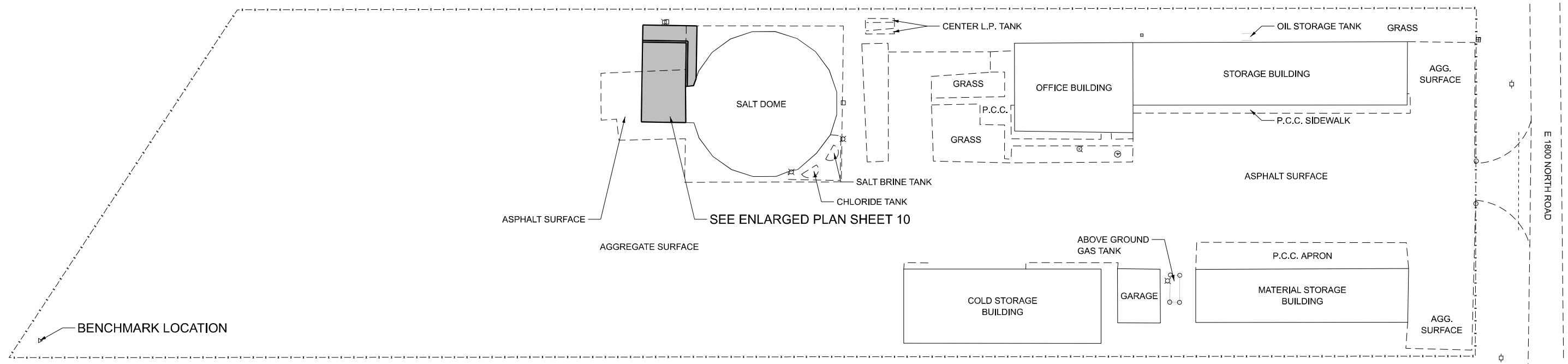
**STATE OF ILLINOIS
 DEPARTMENT OF TRANSPORTATION**

**OVERALL PLAN
 MONTICELLO STORAGE FACILITY**

SCALE: 1" = 30' SHEET 2 OF 3 SHEETS STA. N/A TO STA. N/A

F.A. RTE.	SECTION	COUNTY	TOTAL SHEETS	SHEET NO.
N/A	CAP IMP 2025-1	*	13	6
*DEWITT, VERMILION, PIATT			CONTRACT NO. 70G42	
ILLINOIS FED. AID PROJECT				

MODEL: F:\h\p\h30_Scale (Sheet)
 FILE NAME: F:\Projects\50 IDOT\50.148B24_PTB 203_035_WO 6_D5 Salt Dome Push Walls (Benton)\Drawings\Modals\Fithian Named Boundaries.dgn



USER NAME = Tyler	DESIGNED -	REVISED -
	DRAWN -	REVISED -
PLOT SCALE = 0.16666833' / in.	CHECKED -	REVISED -
PLOT DATE = 9/9/2024	DATE -	REVISED -

**STATE OF ILLINOIS
 DEPARTMENT OF TRANSPORTATION**

**OVERALL PLAN
 FITHIAN STORAGE FACILITY**

SCALE: 1" = 30' SHEET 3 OF 3 SHEETS STA. N/A TO STA. N/A

F.A. RTE.	SECTION	COUNTY	TOTAL SHEETS	SHEET NO.
N/A	CAP IMP 2025-1	*	13	7
*DEWITT, VERMILION, PIATT			CONTRACT NO. 70G42	
ILLINOIS FED. AID PROJECT				

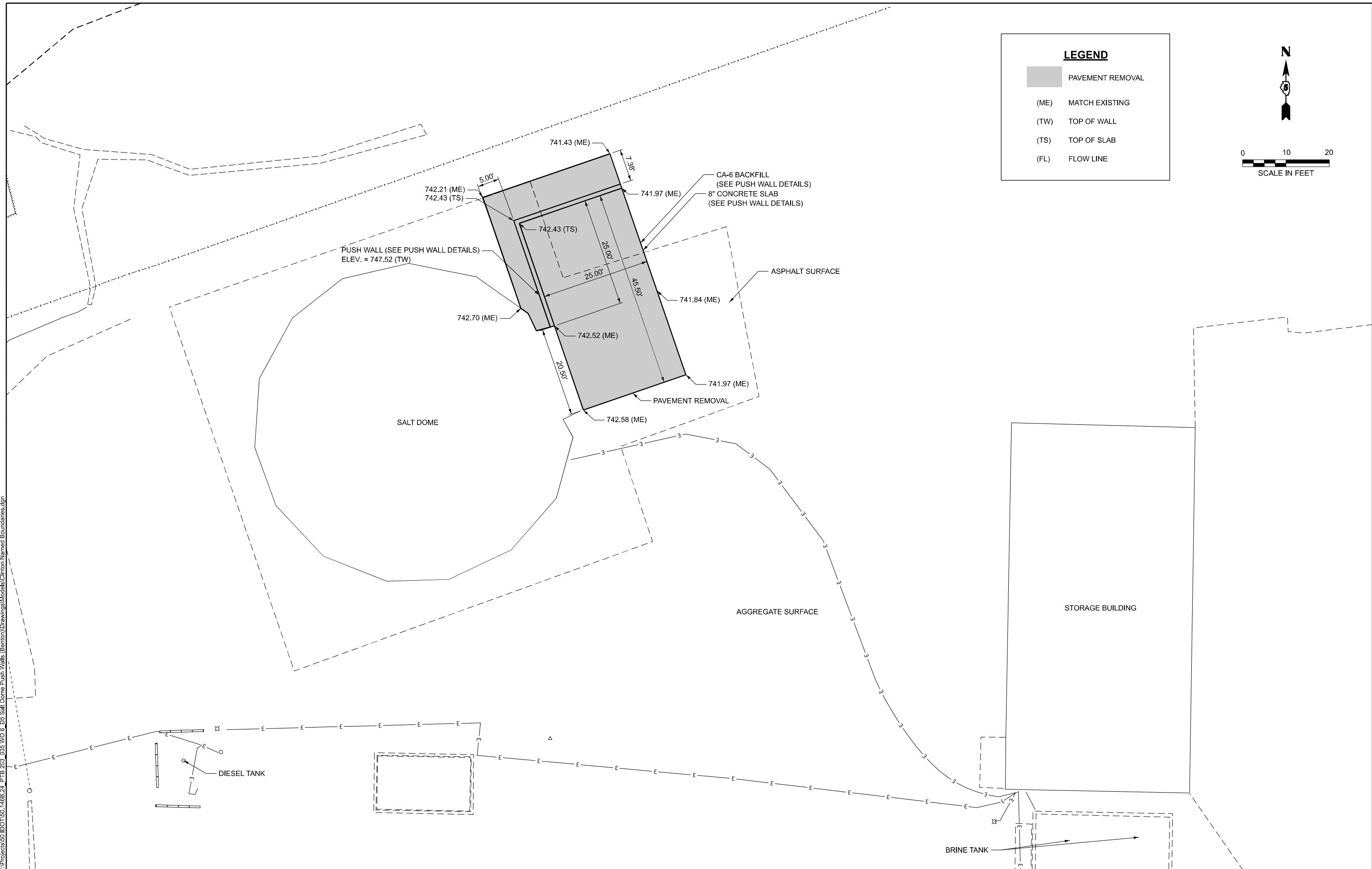
LEGEND

- PAVEMENT REMOVAL
- (ME) MATCH EXISTING
- (TW) TOP OF WALL
- (TS) TOP OF SLAB
- (FL) FLOW LINE

N

0 10 20

SCALE IN FEET



MODEL: C:\inetpub\wwwroot\scale_views\sheet1.dwg
 FILE NAME: F:\projects\50\DOT\50_1488_24_PTB 203_035_WO 6_D5_Salt Dome Push Walls (Benton)\Drawings\Models\Clinton Named Boundaries.dgn



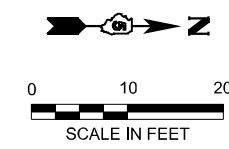
USER NAME = Tyler	DESIGNED -	REVISED -
PLOT SCALE = 0.16666833' / in.	DRAWN -	REVISED -
PLOT DATE = 9/9/2024	CHECKED -	REVISED -
	DATE -	REVISED -

**STATE OF ILLINOIS
DEPARTMENT OF TRANSPORTATION**

**ENLARGED PLAN
CLINTON STORAGE FACILITY**

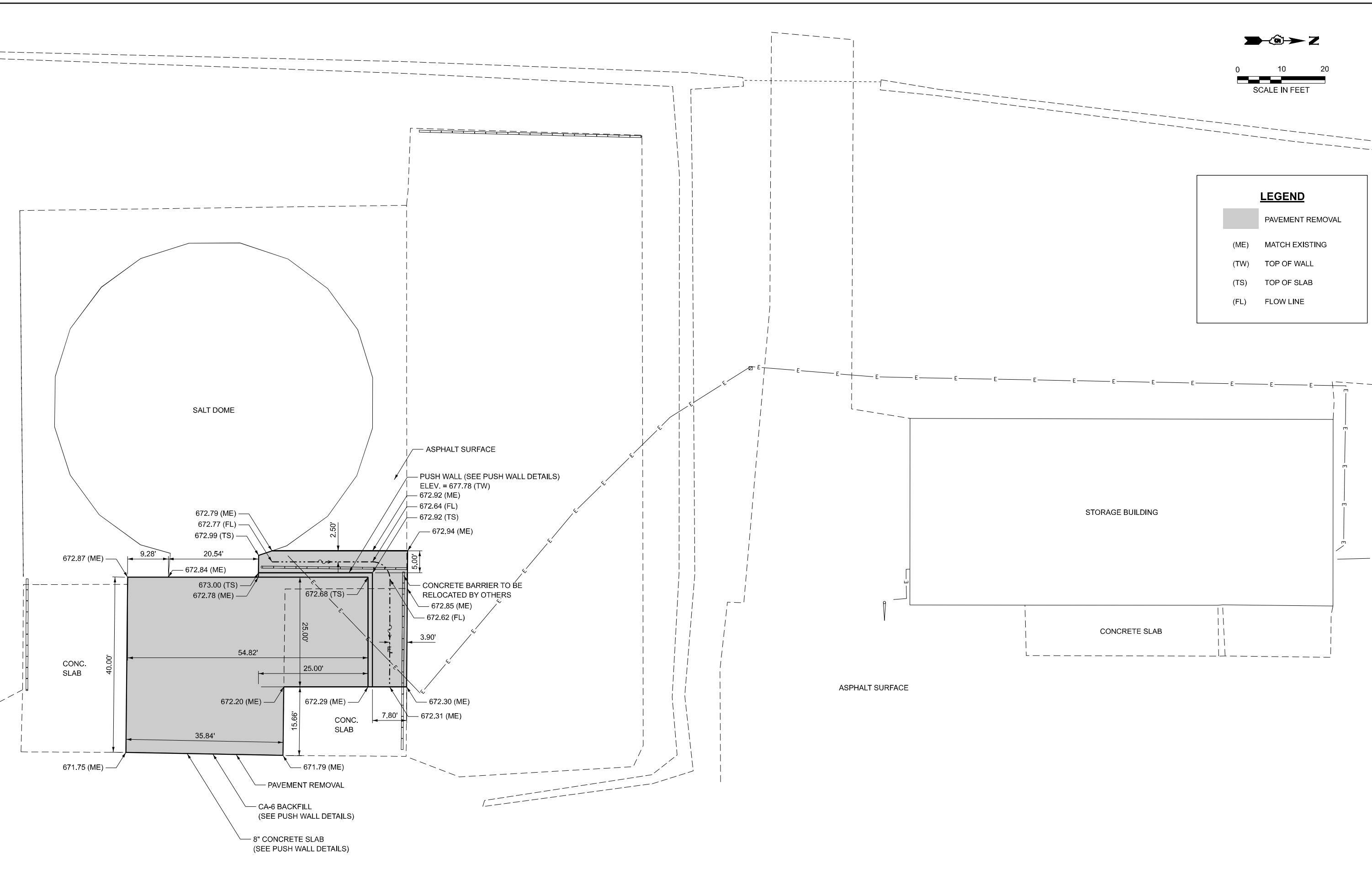
F.A. RTE.	SECTION	COUNTY	TOTAL SHEETS	SHEET NO.
N/A	CAP IMP 2025-1	*	13	8
*DEWITT, VERMILION, PIATT			CONTRACT NO. 70G42	
ILLINOIS FED. AID PROJECT				

SCALE: 1" = 10' SHEET 1 OF 3 SHEETS STA. N/A TO STA. N/A



LEGEND

- PAVEMENT REMOVAL
- (ME) MATCH EXISTING
- (TW) TOP OF WALL
- (TS) TOP OF SLAB
- (FL) FLOW LINE



MODEL: Monticello-shr-0 scale (Sheet)
 FILE NAME: F:\Projects\50 IDOT\50.148B.24_PTB 203_035_WO 6_D5 Salt Dome Push Walls (Bentons)\Drawings\Modals\Monticello Named Boundaries.dgn

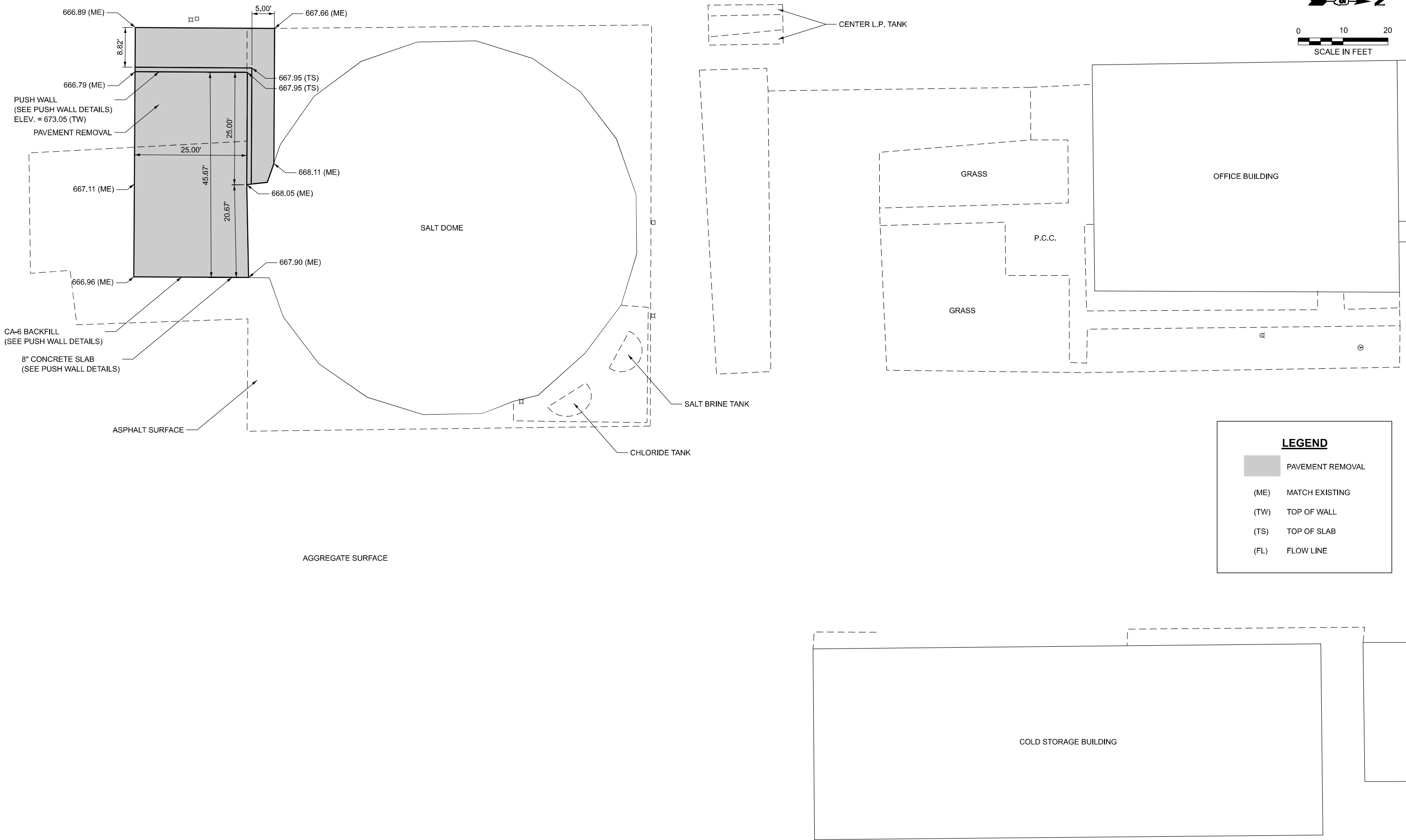
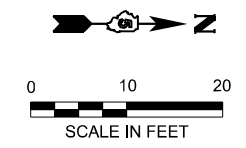


USER NAME = Tyler	DESIGNED -	REVISED -
PLOT SCALE = 0.16666833' / in.	DRAWN -	REVISED -
PLOT DATE = 9/9/2024	CHECKED -	REVISED -
	DATE -	REVISED -

**STATE OF ILLINOIS
DEPARTMENT OF TRANSPORTATION**

ENLARGED PLAN MONTICELLO STORAGE FACILITY			
SCALE: 1" = 10'	SHEET 2	OF 3 SHEETS	STA. N/A TO STA. N/A

F.A. RTE.	SECTION	COUNTY	TOTAL SHEETS	SHEET NO.
N/A	CAP IMP 2025-1	*	13	9
*DEWITT, VERMILION, PIATT		CONTRACT NO. 70G42		
ILLINOIS FED. AID PROJECT				



LEGEND	
	PAVEMENT REMOVAL
(ME)	MATCH EXISTING
(TW)	TOP OF WALL
(TS)	TOP OF SLAB
(FL)	FLOW LINE

MODEL: F:\h10\scale (Sheet)
 FILE NAME: F:\Projects\90\DOT\90.1488.24_PTB 203_035_WO 6_D5 Salt Dome Push Walls (Benton)\Drawings\Modals\Fithian Named Boundaries.dgn



USER NAME = Tyler	DESIGNED -	REVISED -
PLOT SCALE = 0.16666833' / in.	DRAWN -	REVISED -
PLOT DATE = 9/9/2024	CHECKED -	REVISED -
	DATE -	REVISED -

STATE OF ILLINOIS
DEPARTMENT OF TRANSPORTATION

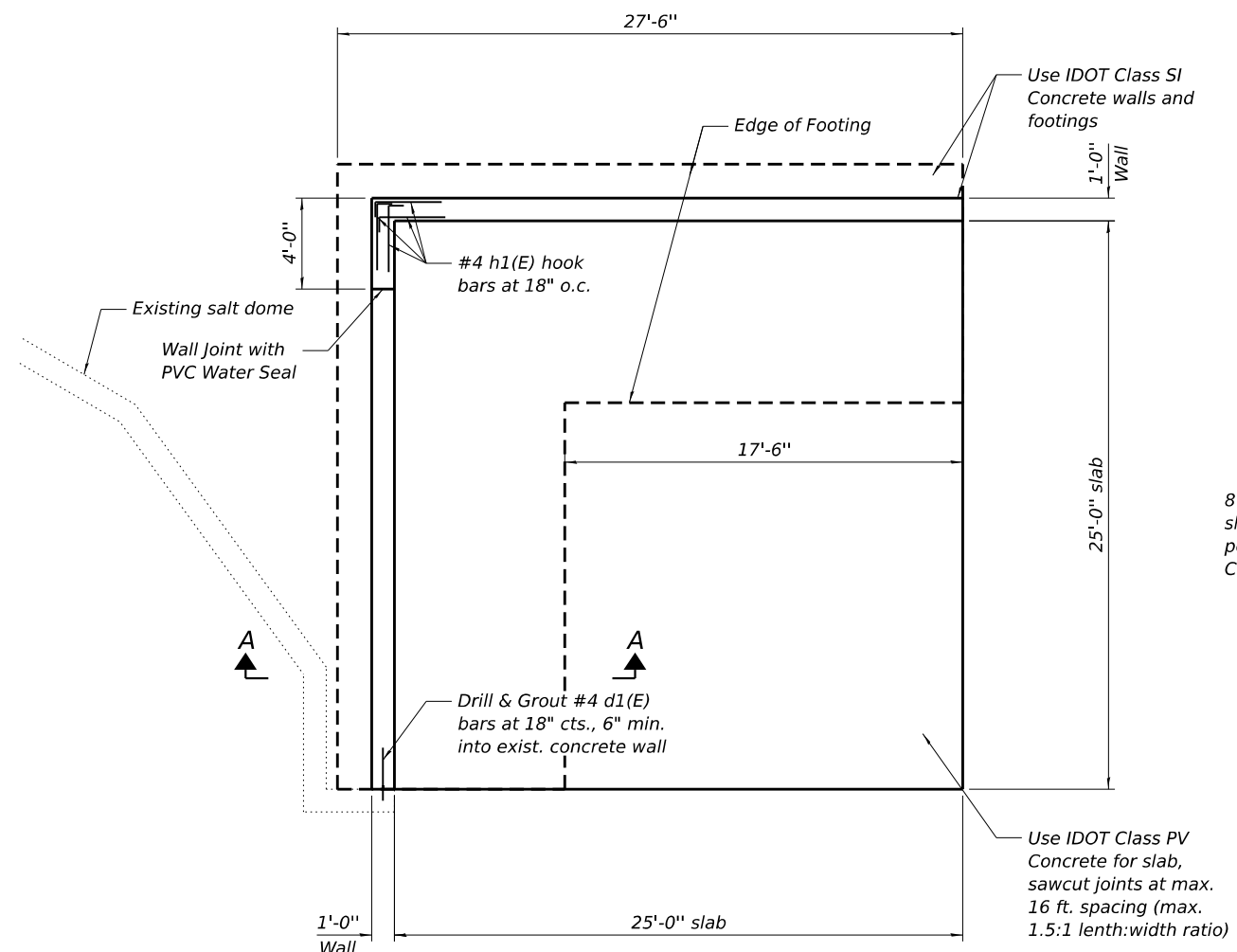
ENLARGED PLAN
FITHIAN STORAGE FACILITY

SCALE: 1" = 10' SHEET 3 OF 3 SHEETS STA. N/A TO STA. N/A

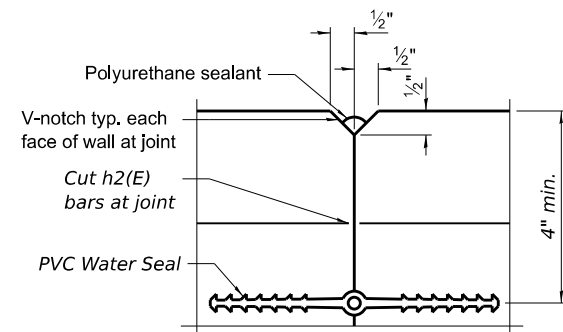
F.A. RTE.	SECTION	COUNTY	TOTAL SHEETS	SHEET NO.
N/A	CAP IMP 2025-1	*	13	10
*DEWITT, VERMILION, PIATT		CONTRACT NO. 70G42		
ILLINOIS FED. AID PROJECT				

Design Stresses

FIELD UNITS
 $f'_c = 3,500$ psi
 $f_y = 60,000$ psi (reinforcement)

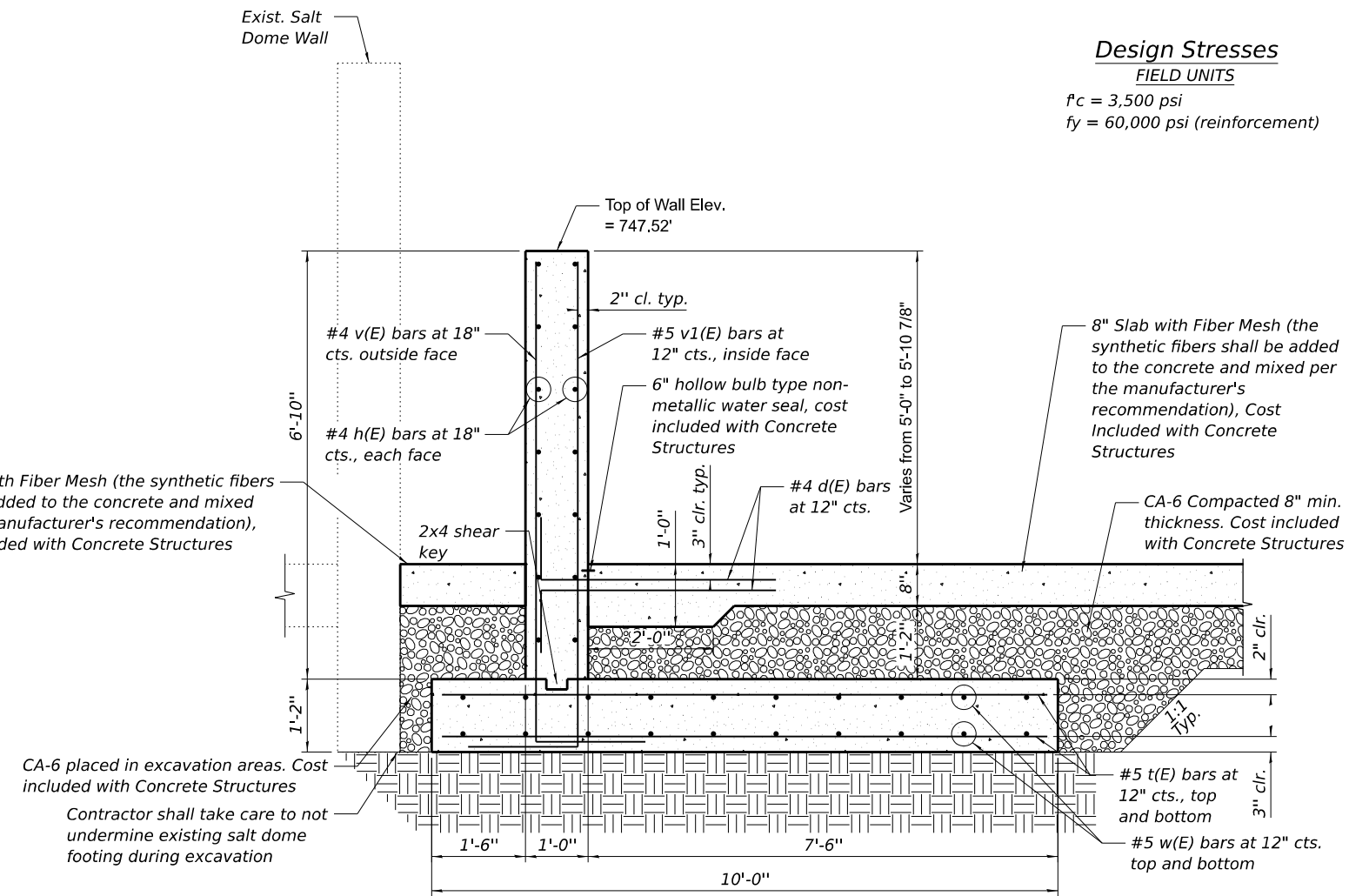


PLAN



WALL JOINT DETAILS

Notes:
 The polyurethane sealant shall be according to Article 1050.04 of the Std. Spec. and the color shall be gray. Cost Included with Concrete Structures.
 The PVC Water Seal shall be according to Article 1054.02 of the Std. Spec. Cost included with Concrete Structures.



SECTION A-A

Notes:
 Reinforcement bars designated (E) shall be epoxy coated.

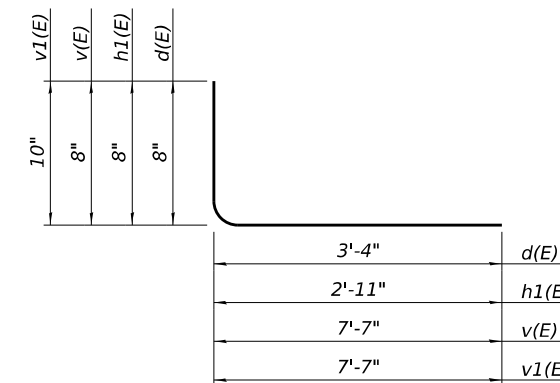
The push wall slab shall receive a light-broom finish and the walls shall receive a normal finish in accordance with Article 503.15 of the standard specifications.

The push wall is design for a 2,000 PLF service load at 2' below the top of the concrete wall.

Maximum applied service bearing pressure, $Q_{max} = 1,500$ PSF

BILL OF MATERIAL

Bar	No.	Size	Length	Shape
d(E)	104	#4	4'-0"	└─┘
d1(E)	5	#4	2'-4"	└─┘
h(E)	20	#4	25'-8"	└─┘
h1(E)	20	#4	3'-7"	└─┘
t(E)	72	#5	9'-8"	└─┘
v(E)	35	#4	8'-3"	└─┘
v1(E)	51	#5	8'-5"	└─┘
w(E)	40	#5	27'-2"	└─┘
Structure Excavation		Cu. Yd.	52.3	
Concrete Structures (Footing/Wall)		Cu. Yd.	32.4	
Concrete Structures (Slab)		Cu. Yd.	36.8	
Reinforcement Bars, Epoxy Coated		Pound	3,180	



Bars d(E), h1(E), v(E) & v1(E)

MODEL: Clinton Storage Facility Details
 FILE NAME: P:\22E3703-6 - 70E23 Salt Dome Push Walls\70G42 Salt Dome Push Walls\CADD Sheets\70G42-Push Wall Details-Clinton Storage Facility.dgn

BA BENTON & ASSOCIATES, INC.
 810 N. LaSalle Ave., Suite 200
 Chicago, IL 60610
 Phone: (312) 467-4000
 Fax: (312) 467-4001
 Registration No. 06-000852

USER NAME =	DESIGNED -	REVISED -
PLOT SCALE =	CHECKED -	REVISED -
PLOT DATE =	DRAWN -	REVISED -
	CHECKED -	REVISED -

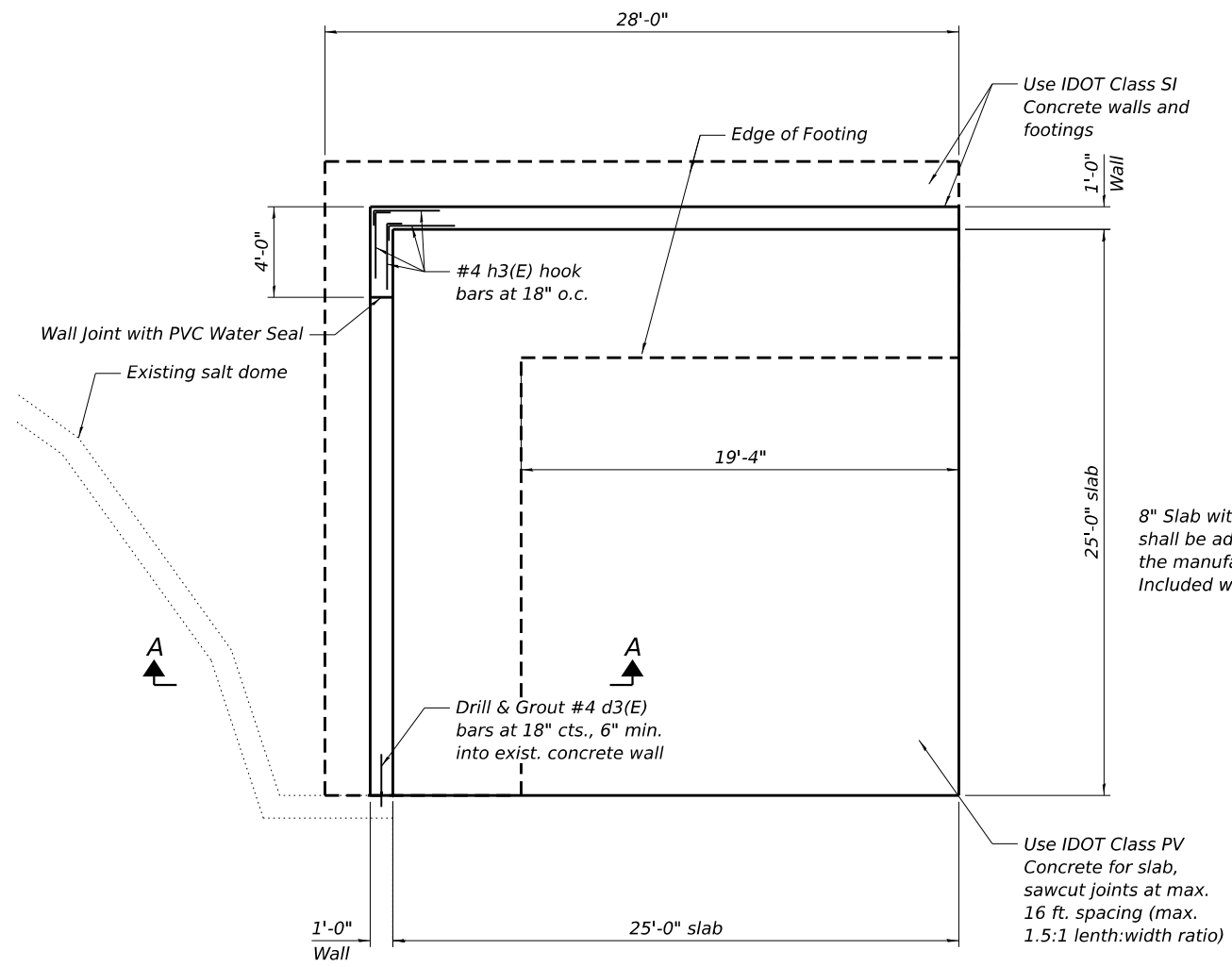
STATE OF ILLINOIS
DEPARTMENT OF TRANSPORTATION

PUSH WALL DETAILS
CLINTON STORAGE FACILITY
 SHEET 1 OF 3 SHEETS

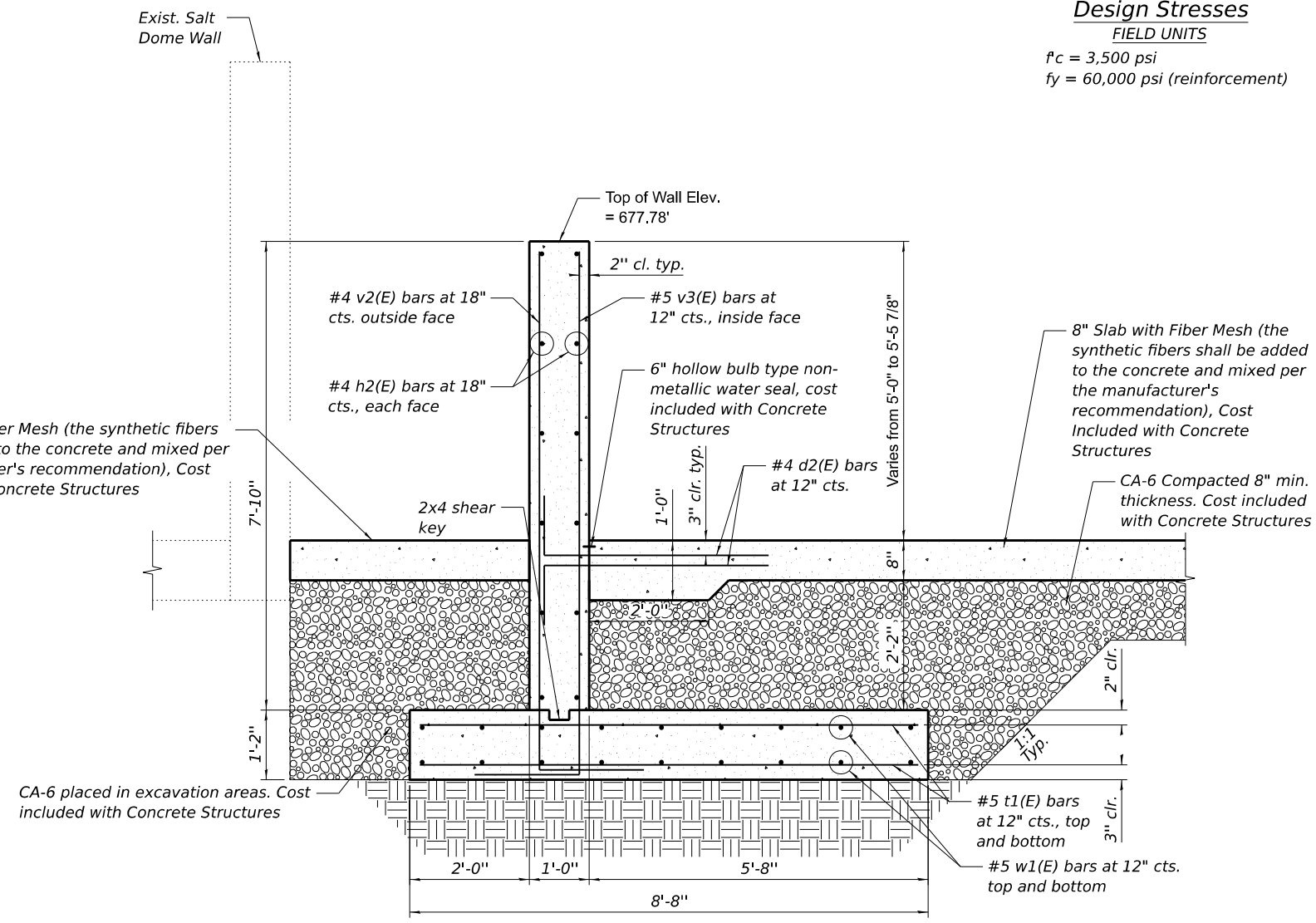
F.A. RTE.	SECTION	COUNTY	TOTAL SHEETS	SHEET NO.
N/A	CAP IMP 2025-1	*	13	11
*DEWITT, VERMILION, PIATT			CONTRACT NO. 70G42	
ILLINOIS		FED. AID PROJECT		

Design Stresses

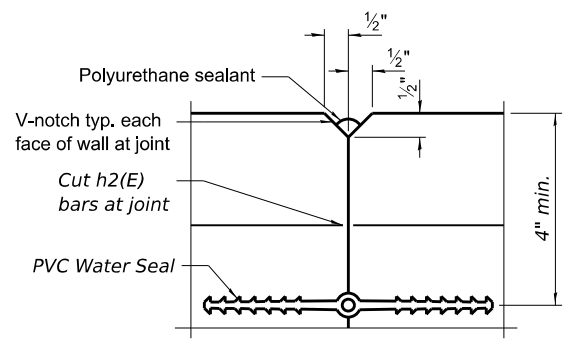
FIELD UNITS
 f_c = 3,500 psi
 f_y = 60,000 psi (reinforcement)



PLAN

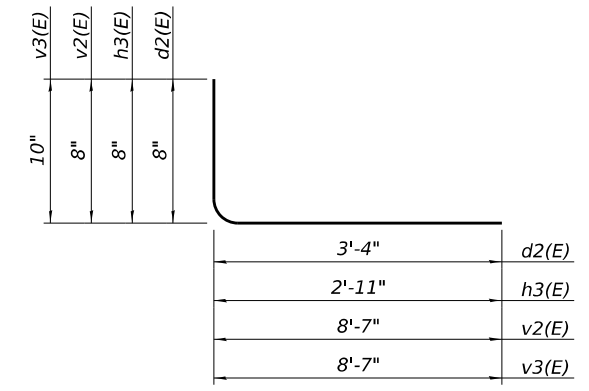


SECTION A-A



WALL JOINT DETAILS

Notes:
 The polyurethane sealant shall be according to Article 1050.04 of the Std. Spec. and the color shall be gray. Cost Included with Concrete Structures.
 The PVC Water Seal shall be according to Article 1054.02 of the Std. Spec. Cost included with Concrete Structures.



Bars d2(E), h3(E), v2(E) & v3(E)

BILL OF MATERIAL

Bar	No.	Size	Length	Shape
d2(E)	104	#4	4'-0"	┌───┐
d3(E)	6	#4	2'-4"	┌───┐
h2(E)	24	#4	25'-8"	┌───┐
h3(E)	24	#4	3'-7"	┌───┐
t1(E)	80	#5	8'-4"	┌───┐
v2(E)	35	#4	9'-3"	┌───┐
v3(E)	51	#5	9'-5"	┌───┐
w1(E)	36	#5	27'-8"	┌───┐
Structure Excavation			Cu. Yd.	59.9
Concrete Structures (Footing/Wall)			Cu. Yd.	32.6
Concrete Structures (Slab)			Cu. Yd.	56.6
Reinforcement Bars, Epoxy Coated			Pound	3,210

Notes:
 Reinforcement bars designated (E) shall be epoxy coated.
 The push wall slab shall receive a light-broom finish and the walls shall receive a normal finish in accordance with Article 503.15 of the standard specifications.
 The push wall is design for a 2,000 PLF service load at 2' below the top of the concrete wall.
 Maximum applied service bearing pressure, Q_{max} = 1,500 PSF

MODEL: Monticello Storage Facility Details
 FILE NAME: P:\2023\70G42 Salt Dome Push Walls\CADD Sheets\0570G42-Push Wall Details-Monticello Storage Facility.dgn



USER NAME =	DESIGNED -	REVISED -
PLOT SCALE =	CHECKED -	REVISED -
PLOT DATE =	DRAWN -	REVISED -
	CHECKED -	REVISED -

**STATE OF ILLINOIS
 DEPARTMENT OF TRANSPORTATION**

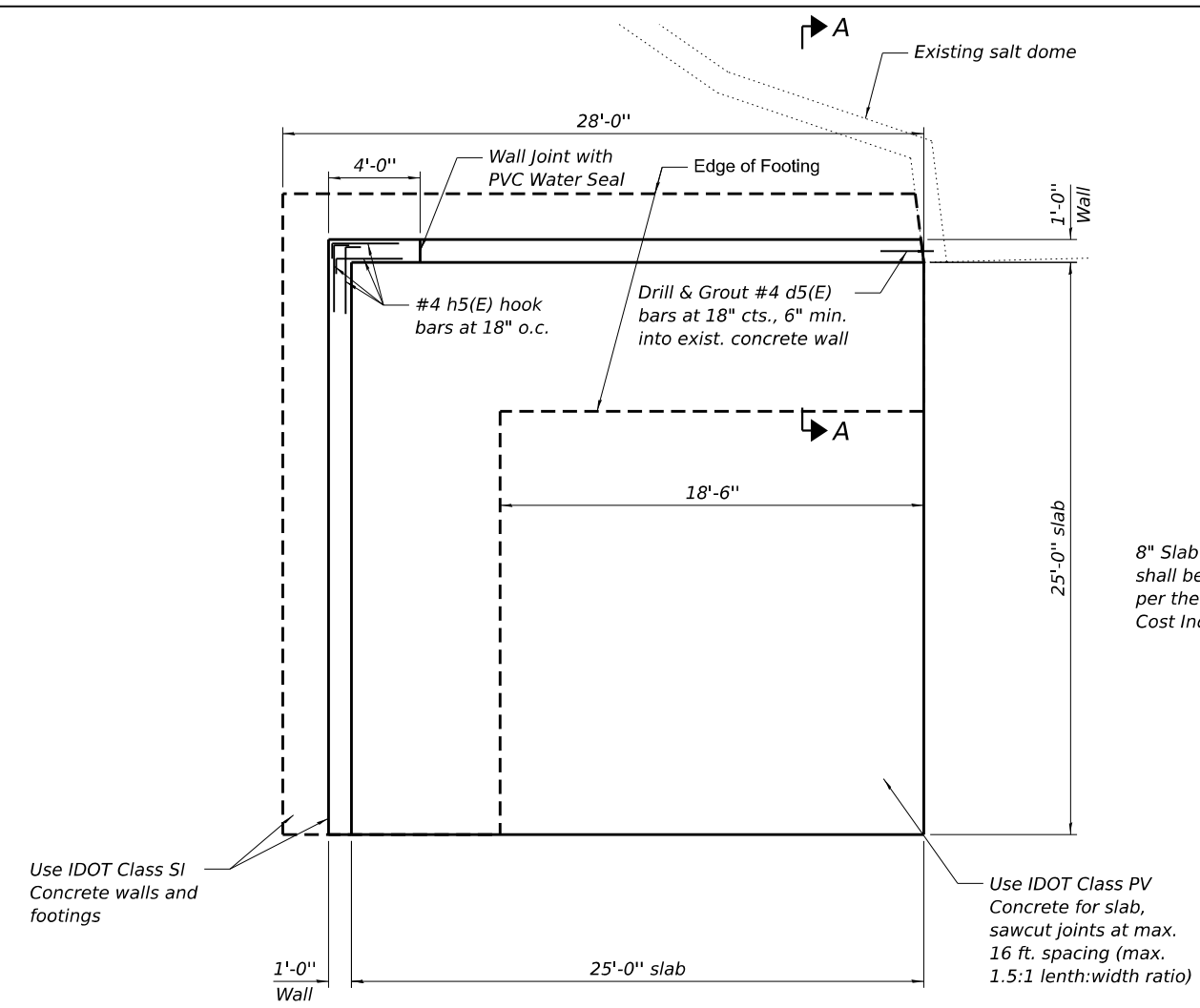
**PUSH WALL DETAILS
 MONTICELLO STORAGE FACILITY**

SHEET 2 OF 3 SHEETS

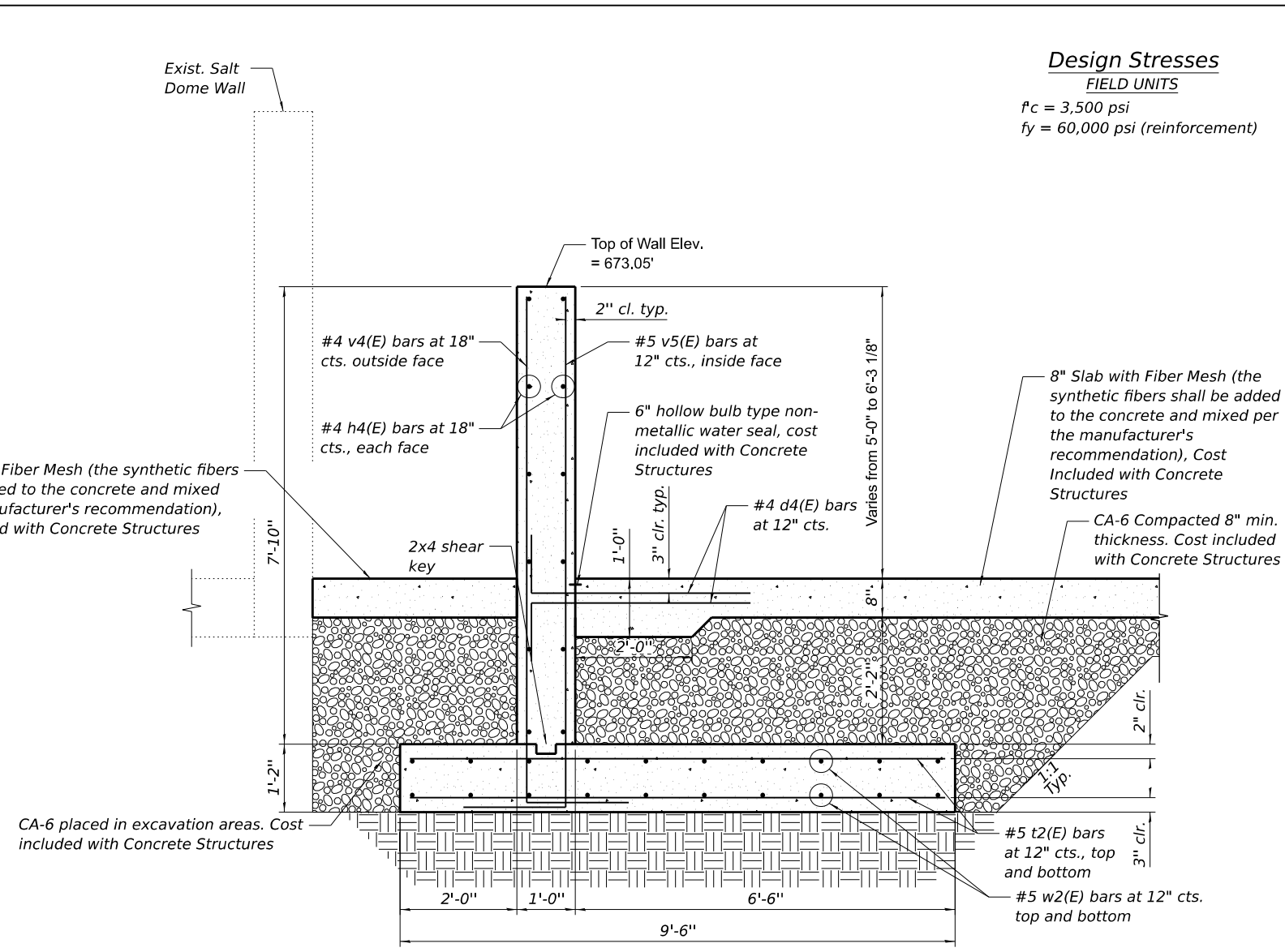
F.A. RTE.	SECTION	COUNTY	TOTAL SHEETS	SHEET NO.
N/A	CAP IMP 2025-1	*	13	12
*DEWITT, VERMLION, PIATT			CONTRACT NO. 70G42	
ILLINOIS FED. AID PROJECT				

Design Stresses

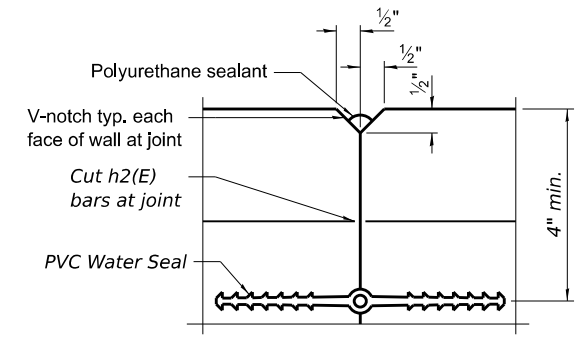
FIELD UNITS
 $f'_c = 3,500$ psi
 $f_y = 60,000$ psi (reinforcement)



PLAN



SECTION A-A



WALL JOINT DETAILS

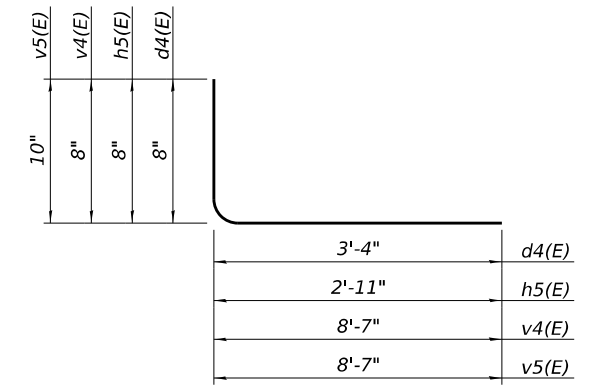
Notes:
 The polyurethane sealant shall be according to Article 1050.04 of the Std. Spec. and the color shall be gray. Cost Included with Concrete Structures.
 The PVC Water Seal shall be according to Article 1054.02 of the Std. Spec. Cost included with Concrete Structures.

Notes:
 Reinforcement bars designated (E) shall be epoxy coated.

The push wall slab shall receive a light-broom finish and the walls shall receive a normal finish in accordance with Article 503.15 of the standard specifications.

The push wall is design for a 2,000 PLF service load at 2' below the top of the concrete wall.

Maximum applied service bearing pressure, $Q_{max} = 1,500$ PSF



Bars d4(E), h5(E), v4(E) & v5(E)

BILL OF MATERIAL

Bar	No.	Size	Length	Shape
d4(E)	104	#4	4'-0"	┌
d5(E)	6	#4	2'-4"	┌
h4(E)	24	#4	25'-8"	┌
h5(E)	24	#4	3'-7"	┌
t2(E)	76	#5	9'-2"	┌
v4(E)	35	#4	9'-3"	┌
v5(E)	51	#5	9'-5"	┌
w2(E)	40	#5	27'-8"	┌
Structure Excavation			Cu. Yd.	83.6
Concrete Structures (Footing/Wall)			Cu. Yd.	33.9
Concrete Structures (Slab)			Cu. Yd.	38.7
Reinforcement Bars, Epoxy Coated			Pound	3,360

MODEL: Fithian Storage Facility Details
 FILE NAME: P:\2023\705-6 - 70E23 Salt Dome Push Walls\CADD\Sheets\570G42-Push Wall Details-Fithian Storage Facility.dgn
 11/14/2024 10:59:16 AM



USER NAME =	DESIGNED -	REVISED -
PLOT SCALE =	CHECKED -	REVISED -
PLOT DATE =	DRAWN -	REVISED -
	CHECKED -	REVISED -

**STATE OF ILLINOIS
 DEPARTMENT OF TRANSPORTATION**

**PUSH WALL DETAILS
 FITHIAN STORAGE FACILITY**

SHEET 3 OF 3 SHEETS

F.A. RTE.	SECTION	COUNTY	TOTAL SHEETS	SHEET NO.
N/A	CAP IMP 2025-1	*	13	13
*DEWITT, VERMILION, PIATT			CONTRACT NO. 70G42	
ILLINOIS		FED. AID PROJECT		