

STATE OF ILLINOIS
DEPARTMENT OF TRANSPORTATION

F.A.P. RTE.	SECTION	COUNTY	TOTAL SHEETS	SHEET NO.
VAR.	D4 BRIDGE DECK SEALING 2025	TAZEWELL	08	1
		ILLINOIS		CONTRACT NO. 68H31

INDEX OF SHEETS

- 1 COVER SHEET
- 2 GENERAL AND JOB SPECIFIC NOTES
- 3 SUMMARY OF QUANTITIES
- 4-7 SCHEDULE OF QUANTITIES
- 8 TYPICAL BRIDGE DECK SECTION

HIGHWAY STANDARDS

- 701006-05
- 701201-05
- 701301-04
- 701400-12
- 701406-13
- 701411-09
- 701426-09
- 701428-01
- 701456-05
- 701602-10
- 701901-10

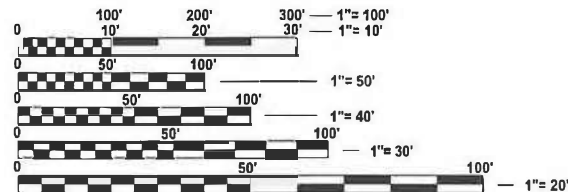
PROPOSED
HIGHWAY PLANS

VARIOUS ROUTES
SECTION: D4 BRIDGE DECK SEALING 2025
BRIDGE PRESERVATION
TAZEWELL COUNTY

C-94-011-23



PROJECT DESCRIPTION:
BRIDGE DECK SEALING AT VARIOUS LOCATIONS WITHIN
DISTRICT 4



FULL SIZE PLANS HAVE BEEN PREPARED USING STANDARD
ENGINEERING SCALES. REDUCED SIZED PLANS WILL NOT
CONFORM TO STANDARD SCALES. IN MAKING MEASUREMENTS
ON REDUCED PLANS, THE ABOVE SCALES MAY BE USED.

J.U.L.I.E.
JOINT UTILITY LOCATION INFORMATION FOR EXCAVATION
1-800-892-0123
OR 811

PROJECT ENGINEER: REBECCA MARRUFFO (309) 671-3454
PROJECT MANAGER: RAYMOND SAMARA (309) 671-3466

CATALOG NO. 036354-00D
CONTRACT NO. 68H31

GROSS LENGTH = N/A
NET LENGTH = N/A

STATE OF ILLINOIS
DEPARTMENT OF TRANSPORTATION

SUBMITTED Dec 03 2024
Kensel A Barnett P.E.
REGIONAL ENGINEER

January 31 2025
[Signature]
ENGINEER OF DESIGN AND ENVIRONMENT

January 31 2025
[Signature]
DIRECTOR OF HIGHWAYS PROJECT IMPLEMENTATION

PRINTED BY THE AUTHORITY
OF THE STATE OF ILLINOIS

GENERAL NOTES

COMMITMENTS:

Commitments are not to be altered without the written approval of all parties to which the commitment was made.

No commitments have been made for this project.

JOB SPECIFIC NOTES

Prior to performing any work, the contractor shall coordinate their work effort with the existing construction contracts in their vicinity to alleviate traffic conflicts and assure traffic progression through all work zones.

A flow meter shall be provided by the contractor to accurately measure quantities per bridge. This shall not be paid for separately, but shall be included in the contract unit price per square feet for "Bridge Deck Concrete Sealer".

When applicable, Highway Standard 701426 may be used if sealer dries in less than 1 hour.

Work shall be performed and completed only between the hours of 8:30 A.M. and 3:30 P.M. at the following structure locations in Tazewell County:

- 090-0001 I-74 OVER IL RIVER (STD. 701428 REQUIRED)
- 090-0106 EB I-474 OVER IL 29 (STD. 701428 REQUIRED)
- 090-0107 WB I-474 OVER IL 29 (STD. 701428 REQUIRED)
- 090-0108 EB I-474 OVER IL RIVER (STD. 701428 REQUIRED)
- 090-0109 WB I-474 OVER IL RIVER (STD. 701428 REQUIRED)
- 090-0110 SB IL 116 OVER TEN MILE CREEK
- 090-0152 IL 40 RAMP OVER I-74
- 090-0153 WB I-74 RAMP OVER I-74
- 090-0155 EB I-74 RAMP OVER MAIN STREET
- 090-0156 CAMP STREET RAMP OVER MAIN STREET
- 090-0157 EB I-74 RAMP OVER CAMP STREET
- 090-0158 EB I-74 OVER ALTORFER LANE (STD. 701428 REQUIRED)
- 090-0159 WB I-74 OVER ALTORFER LANE (STD. 701428 REQUIRED)
- 090-0160 WB I-74 OVER IL 116 (STD. 701428 REQUIRED)
- 090-0161 EB I-74 OVER IL 116 (STD. 701428 REQUIRED)
- 090-0162 EB I-74 RAMP OVER EAST WASHINGTON STREET
- 090-0163 WB I-74 RAMP OVER EAST WASHINGTON STREET
- 090-0172 IL 29 OVER LICK CREEK

MODEL: General Notes (Sheet)
 FILE NAME: c:\p\work\p\w\td\brn.bouris@illinois.gov\090138\0468H31-shr-GenNotes.dgn

USER NAME = Brian.Bouris	DESIGNED -	REVISED -
	DRAWN -	REVISED -
	CHECKED -	REVISED -
PLOT DATE = 9/10/2024	DATE -	REVISED -

**STATE OF ILLINOIS
DEPARTMENT OF TRANSPORTATION**

GENERAL AND JOB SPECIFIC NOTES

SCALE: SHEET OF SHEETS STA. TO STA.

F.A.P. RTE.	SECTION	COUNTY	TOTAL SHEETS	SHEET NO.
VAR.	D4 BRIDGE DECK SEALING 2025	TAZEWELL	08	02
CONTRACT NO. 68H31				
		ILLINOIS	FED. AID PROJECT	

MODEL: Typical Sections (Sheet) - 1
 FILE NAME: c:\pw\work\pwt\brn.bouris@illinois.gov\0993138\0468H31-sht-SQ.dgn

CODE NO.	ITEM	UNIT	TOTAL QUANTITY	CONSTRUCTION CODE
				TAZEWELL COUNTY
				100% STATE 0047
67100100	MOBILIZATION	L SUM	1.0	1.0
70100420	TRAFFIC CONTROL AND PROTECTION, STANDARD 701411	EACH	30.0	30.0
70100450	TRAFFIC CONTROL AND PROTECTION, STANDARD 701201	L SUM	1.0	1.0
70100700	TRAFFIC CONTROL AND PROTECTION, STANDARD 701406	L SUM	1.0	1.0
70100825	TRAFFIC CONTROL AND PROTECTION, STANDARD 701456	L SUM	1.0	1.0
70102632	TRAFFIC CONTROL AND PROTECTION, STANDARD 701602	L SUM	1.0	1.0
70870015	BRIDGE DECK CONCRETE SEALER	SQ FT	2,260,544	2,260,544

USER NAME = Brian.Bouris	DESIGNED -	REVISED -
	DRAWN -	REVISED -
	CHECKED -	REVISED -
PLOT DATE = 9/10/2024	DATE -	REVISED -

**STATE OF ILLINOIS
 DEPARTMENT OF TRANSPORTATION**

SUMMARY OF QUANTITIES

SCALE: SHEET OF SHEETS STA. TO STA.

F.A.P. RTE.	SECTION	COUNTY	TOTAL SHEETS	SHEET NO.
VAR. 04	BRIDGE DECK SEALING 2025	TAZEWELL	08	03
ILLINOIS FED. AID PROJECT			CONTRACT NO. 68H31	

BRIDGE DECK CONCRETE SEALER (INTERSTATE STRUCTURES)							
SN	FACILITY CROSSED	FEATURE CROSSED	LOCATION	BRIDGE DECK LENGTH FOOT	BRIDGE DECK WIDTH FOOT	BRIDGE DECK AREA SQ FT	BRIDGE PARAPET AREA SQ FT
0900001	I-74	ILLINOIS RIVER	IN PEORIA	2,710.00	55.21	149619.1	49,417.45
0900002	WB I-74	DIVERSION CHANNEL	7/8 MI W OF ILL 116	311.70	61.00	19,013.70	2,244.24
0900003	EB I-74	DIVERSION CHANNEL	7/8 MI W OF ILL 116	311.70	61.00	19,013.70	2,244.24
0900008	EB I-74	US 150,FARM CR&RRS	.5 MI E OF ILL 116	853.00	29.60	25,248.80	6,141.60
0900009	WB I-74	US150,FARM CR& RRS	.5 MI E OF ILL 116	803.00	45.30	36,375.90	5,781.60
0900019	EB I-74	N MAIN STREET	N MAIN ST IN MORTON	128.00	42.00	5,376.00	921.60
0900020	WB I-74	N MAIN STREET	N MAIN ST IN MORTON	128.00	42.00	5,376.00	921.60
0900021	EB I-74	BNSF RR (004901L)	1 MI E MORTON INTER.	178.00	36.00	6,408.00	1,281.60
0900022	WB I-74	BNSF RR (004901L)	1 MI E MORTON INTER.	178.00	36.00	6,408.00	1,281.60
0900023	EB I-74	MUD CREEK	1.5 MI W DEER CREEK	133.00	38.60	5,133.80	957.60
0900024	WB I-74	MUD CREEK	1.5 MI W DEER CREEK	133.00	38.60	5,133.80	957.60
0900075	FAS 2467 - CH 3	I-74	1.5 MI E OF MORTON	222.00	28.00	6,216.00	1,598.40
0900084	TENNESSEE RD-TR234	I-74	EAST EDGE OF MORTON	224.00	26.00	5,824.00	1,612.80
0900089	FONDULAC DR	I-74	JUST E ILL-116 INTER	442.00	29.00	12,818.00	3,182.40
0900102	WB I-474	EB I-74	2 MI W OF MORTON	353.00	40.00	14,120.00	2,541.60
0900103	FAU 6720 (PINECREST)	I-474	NEAR CTR 10 GROVELND	252.30	58.80	14,835.24	1,816.56
0900104	SPFLD RD FAU 6719	I-474	.3 MI N OF MULLER RD	252.30	41.90	10,571.37	2,023.88
0900105	COLE ST	I-474	0.25 MI N MULLER RD	238.60	42.50	10,140.50	1,919.76
0900106	EB I-474	ILL 29	S. EDGE OF CR COEUR	244.00	38.60	9,418.40	1,960.80
0900107	WB I-474	ILL 29	S EDGE OF CREVE COEU	247.00	45.10	11,139.70	1,983.60
0900108	EB I-474	ILLINOIS RIVER	SW OF CREVE COEUR	3,421.00	38.90	133,076.90	26,106.00
0900109	WB I-474	ILLINOIS RIVER	SW OF CREVE COEUR	3,425.00	39.00	133,575.00	26,136.40
0900116	PLEASANT HILL RD - FAU 6753	I-74	1.5 MI W OF I-155	253.00	40.00	10,120.00	1,857.00
0900118	I-474 RP #461	WB I-474	3 MI NW OF MORTON	390.00	30.00	11,700.00	2,808.00
0900119	I-474 RP #461	I-74	3.5 MI E OF PEORIA	329.00	30.00	9,870.00	2,368.80
0900125	NB I-155	BNSF RR (004909R)	.3 MI N OF IL 98	142.00	40.20	5,708.40	1,218.40
0900126	SB I-155	BNSF RR (004909R)	.3 MI N OF IL 98	141.00	40.50	5,710.50	1,187.70
TABLE 1 SUBTOTAL						687,950.81	152,472.83
TABLE 1 TOTAL						840,423.64	

MODEL: Schedule (Sheet) - 1
FILE NAME: c:\pwworking\brbrian.bouris@illinois.gov\09031380\468H31-sh-schedule.dgn

USER NAME = Brian.Bouris	DESIGNED -	REVISED -
	DRAWN -	REVISED -
	CHECKED -	REVISED -
PLOT DATE = 9/10/2024	DATE -	REVISED -

**STATE OF ILLINOIS
DEPARTMENT OF TRANSPORTATION**

SCHEDULE OF QUANTITIES

SCALE: SHEET OF SHEETS STA. TO STA.

F.A.P. RTE.	SECTION	COUNTY	TOTAL SHEETS	SHEET NO.
VAR.	D4 BRIDGE DECK SEALING 2025	TAZEWELL	08	04
CONTRACT NO. 68H31			ILLINOIS FED. AID PROJECT	

BRIDGE DECK CONCRETE SEALER (INTERSTATE STRUCTURES - CONTINUED)							
SN	FACILITY CROSSED	FEATURE CROSSED	LOCATION	BRIDGE DECK LENGTH FOOT	BRIDGE DECK WIDTH FOOT	BRIDGE DECK AREA SQ FT	BRIDGE PARAPET AREA SQ FT
0900127	RAMP FROM IL 98 TO I-155	BNSF RR (004909R)	.3 MI N OF IL 98	147.00	26.40	3,880.80	1,255.10
0900128	SB I-155	IL 98	1.2 MI S OF I-74	182.00	53.90	8,881.60	1,335.90
0900129	NB I-155	IL 98	1.2 MI S OF I-74	181.00	54.20	8,905.20	1,328.50
0900130	QUEENWOOD ROAD	I-155	1 MI S OF IL 98	191.00	66.50	12,701.50	1,695.50
0900131	SB MAIN STREET	I-155	1.6 MI S OF IL 98	460.00	25.90	11,914.00	3,743.40
0900132	BROADWAY ROAD	I-155	2.5 MI S OF IL 98	195.00	61.80	12,051.00	1,724.90
0900133	ALLENTOWN ROAD	I-155	2 MI N OF IL 9	215.00	34.20	7,353.00	1,651.50
0900134	SB I-155	IL 9	5.6 MI S OF IL 98	182.00	41.90	7,625.80	1,335.90
0900135	NB I-155	IL 9	5.6 MI S OF IL 98	182.20	42.20	7,688.80	1,337.30
0900136	TOWNLINE ROAD - CH 7	I-155	3 MI S OF IL 9	221.00	62.10	13,724.10	1,695.50
0900137	FEATHER ROAD - FAS 477	I-155	4.9 MI S OF IL 9	224.00	30.10	6,742.40	1,717.60
0900138	IL 122	I-155	S. INTERCHGE IL 122	215.00	62.00	13,330.00	1,651.50
0900139	ARMINGTON ROAD - CH 8	I-155	3 MI S OF IL 122	325.00	30.00	9,750.00	2,458.90
0900141	MORTON AVE - FAU 6729	I-74	MORTON INTERCHANGE	254.00	82.00	20,828.00	1,828.80
0900152	FAP 404	I-74	EAST PEORIA	175.00	25.90	4,532.50	2,106.00
0900153	I-74 RAMP	DIVERSION CHANNEL	EAST PEORIA	1,454.00	35.40	51,471.60	10,386.60
0900155	I-74 EB TO EB CAMP STREET	MAIN STREET AND RAMP	0.03 MI W OF US 116	636.00	26.00	16,536.00	6,264.00
0900156	CAMP STREET TO WB I-74	MAIN STREET AND RAMP	0.02 MI NE 74	691.00	26.00	17,966.00	6,381.00
0900158	EB I-74	ALTORFER LANE AND TP&W RR	.25 MI W OF ILL 116	257.00	107.00	25,828.50	3,074.90
0900159	WB I-74	ALTORFER LANE AND TP&W RR	.25 MI W OF ILL 116	222.00	79.60	17,660.10	2,638.40
0900160	WB I-74	IL 116	IL 116 INTERCHANGE	194.00	41.70	8,080.10	1,882.00
0900161	EB I-74	IL 116	IL 116 INTERCHANGE	194.00	54.90	10,650.60	2,250.40
0900162	EB I-74 RAMP	EAST WASHINGTON STREET	IL 8 INTER. E PEORIA	210.00	62.90	12,369.00	2,347.50
0900163	WB I-74 RAMP	EAST WASHINGTON STREET	IL 8 INTER. E PEORIA	210.00	57.60	11,802.00	1,680.00
0900165	I-155 SB	I-74	I-155/74 INTERCHANGE	231.00	31.00	7,161.00	1,663.20
0900166	I-155NB	I-74	I-155/74INTERCHANGE	231.00	31.00	7,161.00	1,663.20
0900167	I-74WB&EB	CH 22 JEFFERSON ST	0.2 MI W. of US 150	132.00	113.50	14,982.00	950.40
0900169	I-74	US150 & Bike Path	.5 MI W MORTON INTER	314.90	112.00	35,268.80	2,267.28
TABLE 2 SUBTOTAL						386,845.40	70,315.18
TABLE 2 TOTAL						457,160.58	
GRAND TOTAL (INTERSTATE STRUCTURES)						1,297,584.22	

MODEL: Schedule (Sheet) - 2
 FILE NAME: c:\p\work\pwt\10brian.bouris@illinois.gov\0993138\0468H31-sht-schedule.dgn

USER NAME = Brian.Bouris	DESIGNED -	REVISED -
	DRAWN -	REVISED -
	CHECKED -	REVISED -
PLOT DATE = 9/10/2024	DATE -	REVISED -

**STATE OF ILLINOIS
DEPARTMENT OF TRANSPORTATION**

SCHEDULE OF QUANTITIES

SCALE: SHEET OF SHEETS STA. TO STA.

F.A.P. RTE.	SECTION	COUNTY	TOTAL SHEETS	SHEET NO.
VAR.	D4 BRIDGE DECK SEALING 2025	TAZEWELL	08	05
CONTRACT NO. 68H31				
ILLINOIS FED. AID PROJECT				

MODEL: Schedule (Sheet) - 4
 FILE NAME: c:\p\work\pvt\librian.bouris@illinois.gov\0993138\0468H31-sht-schedule.dgn

MOBILIZATION	
LOCATION	L SUM
JOBSITE	1.0
TOTAL	1.0

TRAFFIC CONTROL AND PROTECTION, STANDARD 701411	
LOCATION	EACH
JOBSITE	30.0
TOTAL	30.0

TRAFFIC CONTROL AND PROTECTION, STANDARD 701201	
LOCATION	L SUM
JOBSITE	1.0
TOTAL	1.0

TRAFFIC CONTROL AND PROTECTION, STANDARD 701456	
LOCATION	L SUM
JOBSITE	1.0
TOTAL	1.0

TRAFFIC CONTROL AND PROTECTION, STANDARD 701406	
LOCATION	L SUM
JOBSITE	1.0
TOTAL	1.0

TRAFFIC CONTROL AND PROTECTION, STANDARD 701602	
LOCATION	L SUM
JOBSITE	1.0
TOTAL	1.0

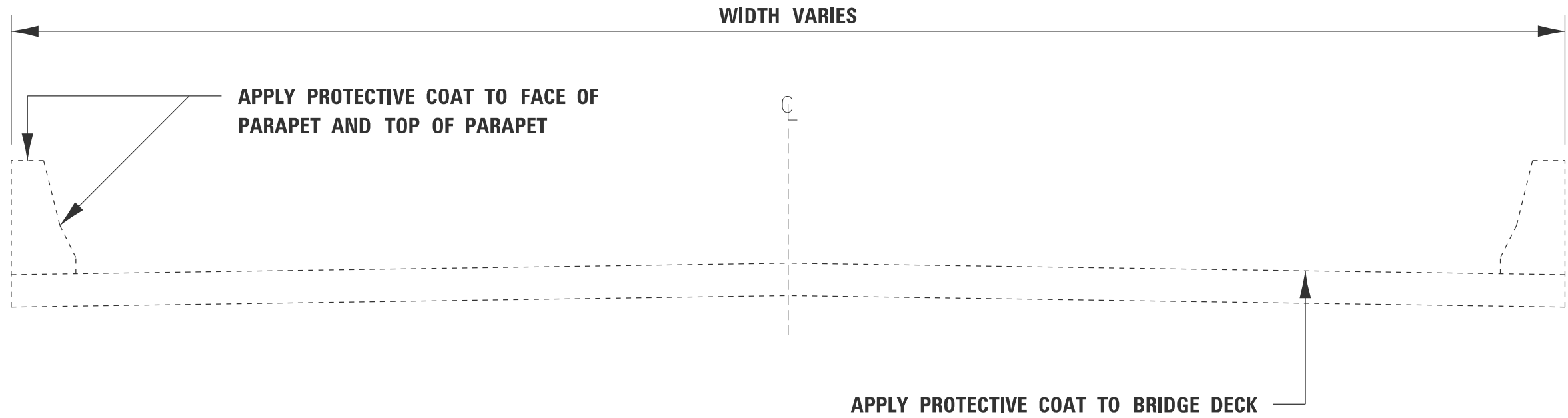
USER NAME = Brian.Bouris	DESIGNED -	REVISED -
	DRAWN -	REVISED -
	CHECKED -	REVISED -
PLOT DATE = 9/10/2024	DATE -	REVISED -

**STATE OF ILLINOIS
 DEPARTMENT OF TRANSPORTATION**

SCHEDULE OF QUANTITIES

SCALE: SHEET OF SHEETS STA. TO STA.

F.A.P. RTE.	SECTION	COUNTY	TOTAL SHEETS	SHEET NO.
VAR.	D4 BRIDGE DECK SEALING 2025	TAZEWELL	08	07
CONTRACT NO. 68H31				
ILLINOIS FED. AID PROJECT				



NOTE:

**IN CASES OF A SHORTER PARAPET WITH ATTACHED RAIL,
THE ABOVE APPLICATION METHOD WILL STILL APPLY.**

MODEL: Typical Sections (Sheet) - 1
FILE NAME: c:\p\work\project\brian.bouris@illinois.gov\0993138\0468H31-shit-typical.dgn

USER NAME = Brian.Bouris	DESIGNED -	REVISED -
	DRAWN -	REVISED -
	CHECKED -	REVISED -
PLOT DATE = 8/1/2024	DATE -	REVISED -

**STATE OF ILLINOIS
DEPARTMENT OF TRANSPORTATION**

TYPICAL BRIDGE DECK SECTION

SCALE: SHEET OF SHEETS STA. TO STA.

F.A.P. RTE.	SECTION	COUNTY	TOTAL SHEETS	SHEET NO.
VAR.	D4 BRIDGE DECK SEALING 2025	TAZEWELL	08	08
CONTRACT NO. 68H31				
ILLINOIS FED. AID PROJECT				