

GENERAL NOTES:

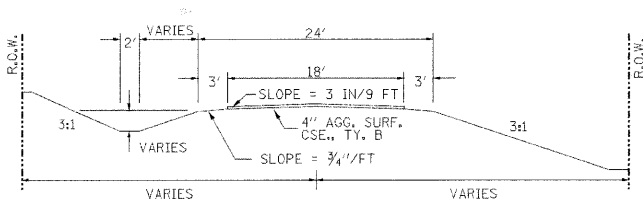
THIS SECTION SHALL BE CONSTRUCTED IN ACCORDANCE WITH THE PLANS, SPECIAL PROVISIONS AND "STANDARD SPECIFICATIONS FOR ROAD AND BRIDGE CONSTRUCTION", ADOPTED JANUARY 1, 2007.

THE WORK INVOLVED ON THIS SECTION CONSISTS OF THE REMOVAL OF THE EXISTING STRUCTURE, THE CONSTRUCTION OF A 75 FOOT LONG SINGLE SPAN PRECAST, PRESTRESSED CONCRETE DECK BEAM BRIDGE, EARTH APPROACHES, AGGREGATE SURFACE COURSE AND OTHER MISCELLANEOUS ITEMS NECESSARY TO COMPLETE THIS SECTION.

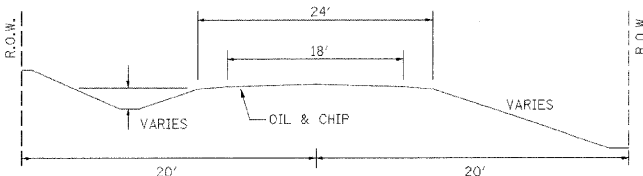
ALL ELEVATIONS ARE BASED ON U.S.G.S. MEAN SEA LEVEL DATUM.

IT SHALL BE THE CONTRACTOR'S RESPONSIBILITY TO CONTACT ALL THE UTILITIES, AFFECTING THE PROJECT, PRIOR TO CONSTRUCTION.

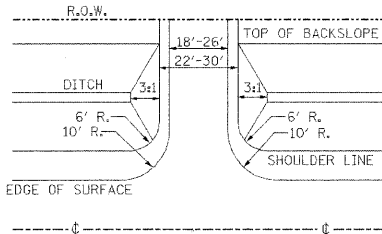
TYPICAL CROSS SECTION
PROPOSED



TYPICAL CROSS SECTION
EXISTING



FIELD ENTRANCE DETAIL



UTILITIES:

JULI.E. 1-800-892-0123

VERIZON
618-395-6191

ELLERY WATER CORP.
618-445-2858

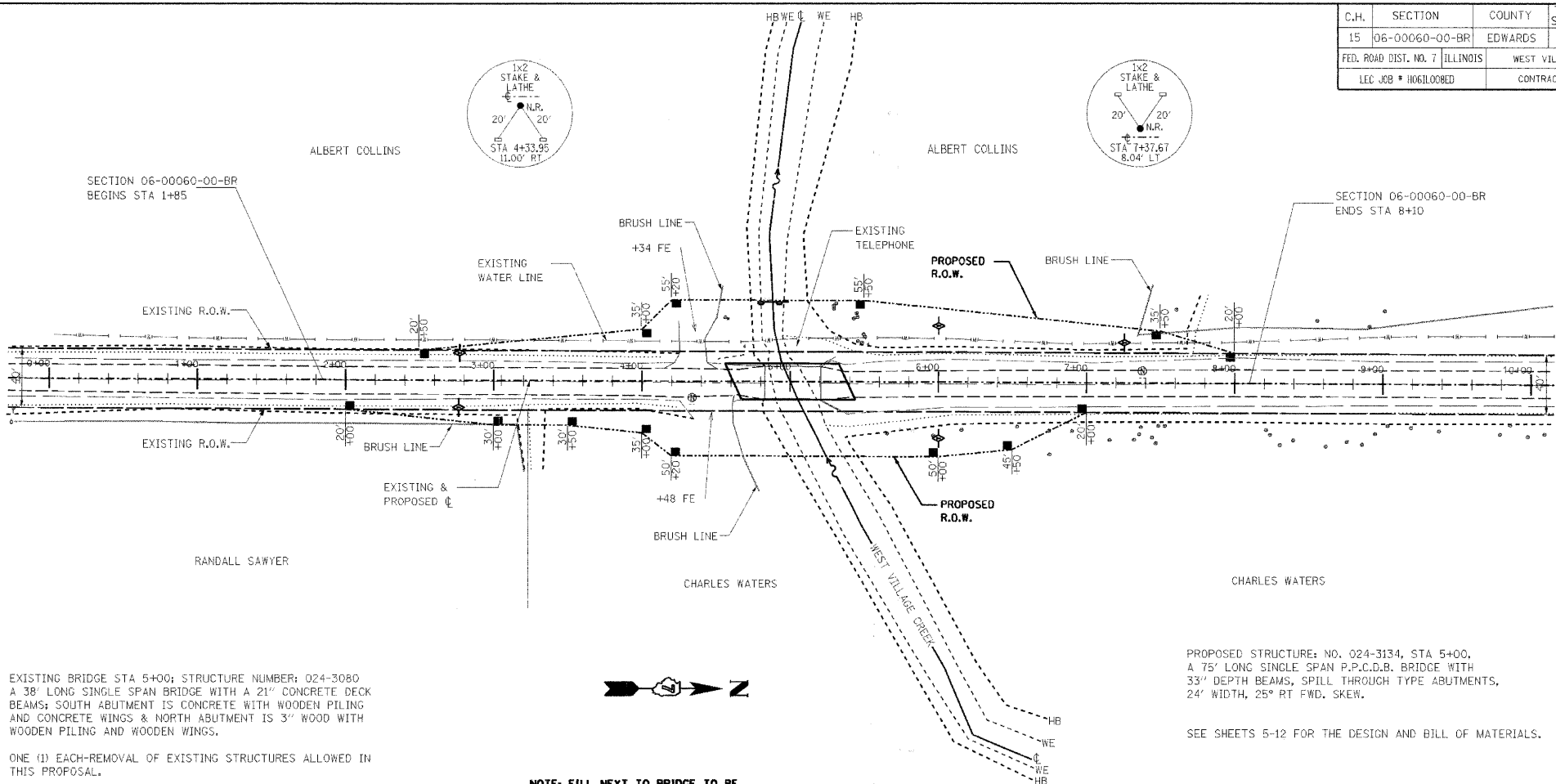
NOTE: CONSTRUCT SPECIAL DITCH

STA 2+00 TO STA 4+00 RT
STA 2+50 TO STA 4+00 LT
STA 5+25 TO STA 7+00 RT
STA 5+24 TO STA 8+00 LT

NOTE: CONSTRUCT STONE RIPRAP DITCH

STA 5+25 TO STA 5+75 RT (0.62 TON/LIN FT)
STA 5+24 TO STA 5+74 LT (0.62 TON/LIN FT)
62 TON STONE RIPRAP DITCH ALLOWED IN PROPOSAL.

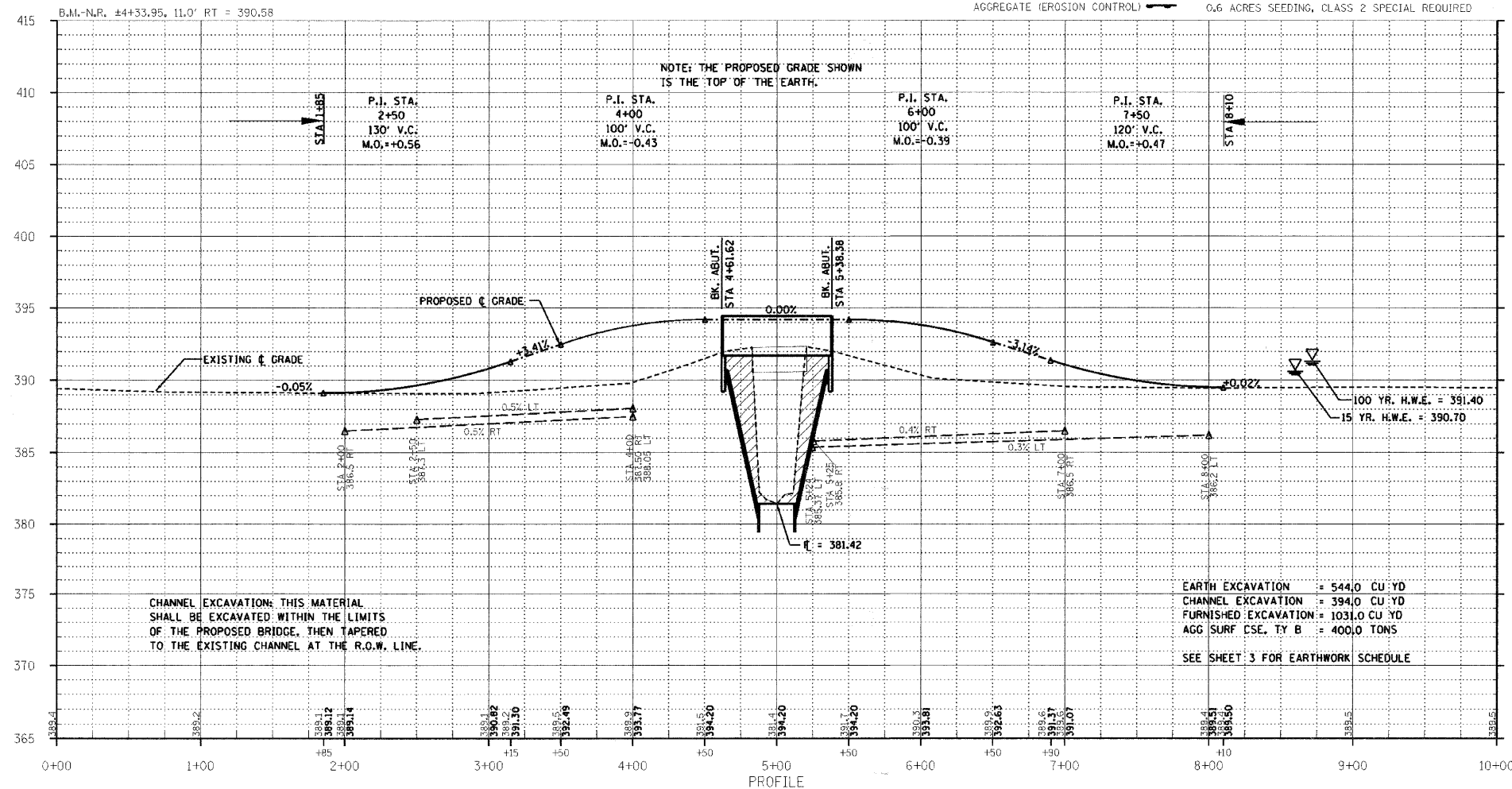
SEE SHEET NO. 12 FOR STONE RIPRAP DITCH DETAIL.



EXISTING BRIDGE STA 5+00; STRUCTURE NUMBER: 024-3080
A 38' LONG SINGLE SPAN BRIDGE WITH A 21" CONCRETE DECK BEAMS; SOUTH ABUTMENT IS CONCRETE WITH WOODEN PILING AND CONCRETE WINGS & NORTH ABUTMENT IS 3" WOOD WITH WOODEN PILING AND WOODEN WINGS.

ONE (1) EACH-REMOVAL OF EXISTING STRUCTURES ALLOWED IN THIS PROPOSAL.

NOTE: FILL NEXT TO BRIDGE TO BE
AGGREGATE SURFACE COURSE



PROPOSED STRUCTURE: NO. 024-3134, STA 5+00.
A 75' LONG SINGLE SPAN P.P.C.D.B. BRIDGE WITH
33" DEPTH BEAMS, SPILL THROUGH TYPE ABUTMENTS,
24' WIDTH, 25° RT FWD. SKEW.

SEE SHEETS 5-12 FOR THE DESIGN AND BILL OF MATERIALS.

RIGHT-OF-WAY MARKERS
TEMPORARY DITCH CHECKS
AGGREGATE (EROSION CONTROL)
75.0 UNITS-TREE REMOVAL (6 TO 15 UNITS DIAMETER)
143.0 UNITS-TREE REMOVAL (OVER 15 UNITS DIAMETER)
0.6 ACRES SEEDING, CLASS 2 SPECIAL REQUIRED

EARTH EXCAVATION = 544.0 CU YD
CHANNEL EXCAVATION = 394.0 CU YD
FURNISHED EXCAVATION = 1031.0 CU YD
AGG SURF CSE, TY B = 400.0 TONS
SEE SHEET 3 FOR EARTHWORK SCHEDULE

C.H.	SECTION	COUNTY	TOTAL SHEETS	SHEET NO.
15	06-00060-00-BR	EDWARDS	12	2
FED. ROAD DIST. NO. 7 ILLINOIS		WEST VILLAGE CREEK		
LEC JOB # 1061000ED		CONTRACT # 95534		

323 W. 3RD ST.
P.O. BOX 160
MT. CARMEL, IL
62863

PHONE:
(618)-262-8651
FAX:
(618)-263-3327

405 W. STATE ST.
SUITE 1
PRINCETON, IN
47670

PROFESSIONAL DESIGN FIRM
LAND SURVEY &
PROFESSIONAL
ENGINEERING
CORPORATION
184-000887
(62-032435)/(35-002769)

AARON M. MEFFORD
REGISTERED
PROFESSIONAL
ENGINEER
OF
ILLINOIS

AARON M. MEFFORD
NAME
SIGNATURE
10-29-07
DATE
11-30-09
EXPIRES

COUNTY HIGHWAY 15
WEST VILLAGE CREEK
EDWARDS COUNTY, ILLINOIS

SHEET TITLE:

HYDRAULIC DATA

SCALE: VARIES
BY: AMM
DATE: 10/29/07
REV:

2 OF 12
SHEETS

SHEET NO.
2