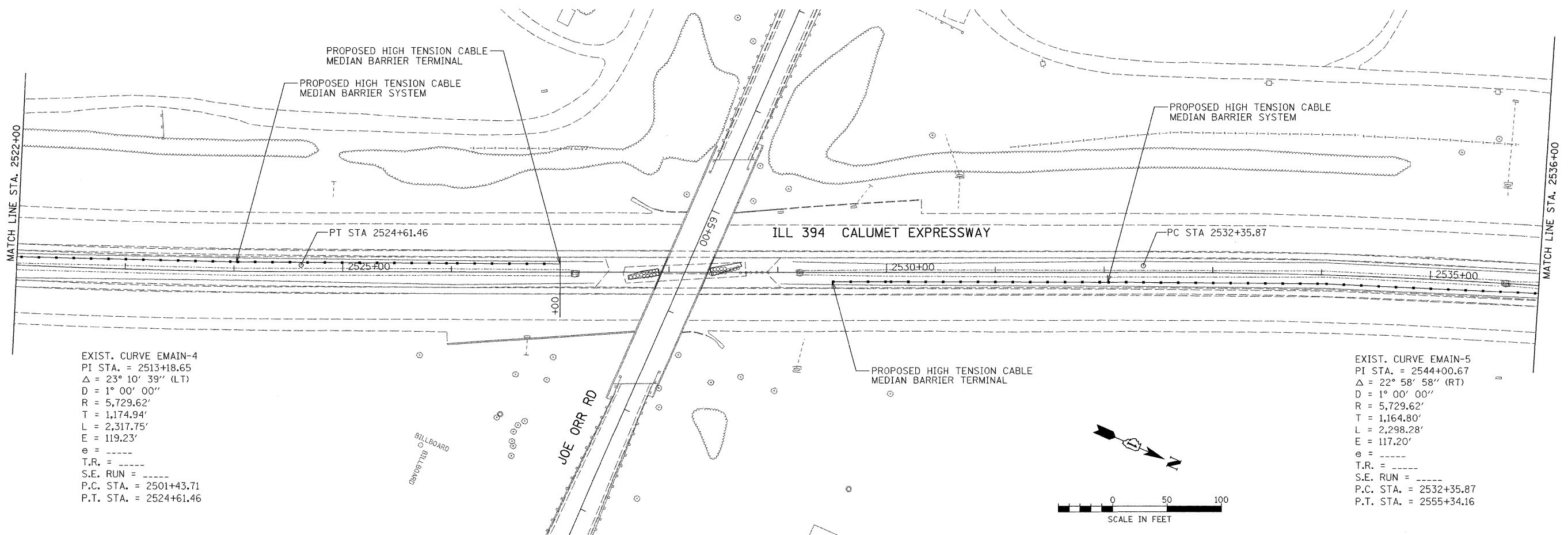
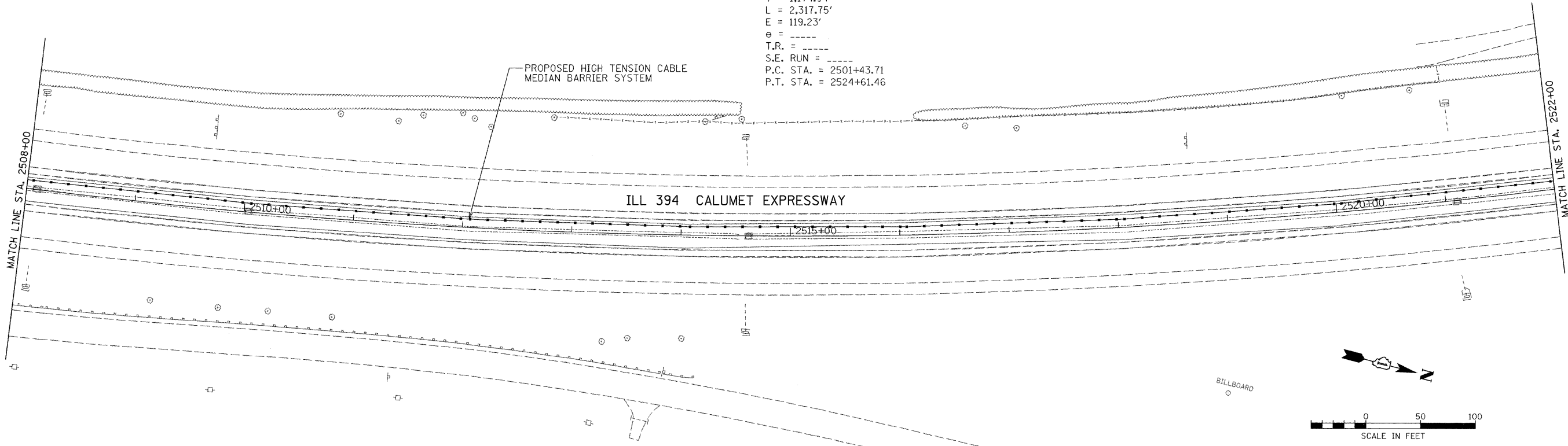


EXIST. CURVE EMAIN-4  
 PI STA. = 2513+18.65  
 $\Delta = 23^\circ 10' 39''$  (LT)  
 D = 1° 00' 00"  
 R = 5,729.62'  
 T = 1,174.94'  
 L = 2,317.75'  
 E = 119.23'  
 e = -----  
 T.R. = -----  
 S.E. RUN = -----  
 P.C. STA. = 2501+43.71  
 P.T. STA. = 2524+61.46



EXIST. CURVE EMAIN-4  
 PI STA. = 2513+18.65  
 $\Delta = 23^\circ 10' 39''$  (LT)  
 D = 1° 00' 00"  
 R = 5,729.62'  
 T = 1,174.94'  
 L = 2,317.75'  
 E = 119.23'  
 e = -----  
 T.R. = -----  
 S.E. RUN = -----  
 P.C. STA. = 2501+43.71  
 P.T. STA. = 2524+61.46

EXIST. CURVE EMAIN-5  
 PI STA. = 2544+00.67  
 $\Delta = 22^\circ 58' 58''$  (RT)  
 D = 1° 00' 00"  
 R = 5,729.62'  
 T = 1,164.80'  
 L = 2,298.28'  
 E = 117.20'  
 e = -----  
 T.R. = -----  
 S.E. RUN = -----  
 P.C. STA. = 2532+35.87  
 P.T. STA. = 2555+34.16

H:\Jobs\2006\20063028-32\CAD\DOT\_T\trans\dmr\00\ILL394\_Plan20.dgn  
 1/2/2008 11:33 AM

FILE NAME =	USER NAME = .USER.	DESIGNED -	REVISED -	<b>STATE OF ILLINOIS DEPARTMENT OF TRANSPORTATION</b>	<b>EXISTING AND PROPOSED ROADWAY PLAN</b>			F.A.P. RTE.	SECTION	COUNTY	TOTAL SHEETS	SHEET NO.	
#FILE#		DRAWN -	REVISED -					332	2007-044 I	WILL & COOK	53	25	
PLOT SCALE = 50.0000' / IN.		CHECKED -	REVISED -					SCALE: 1" = 50'				CONTRACT NO. 60D34	
PLOT DATE = 1/2/2008		DATE -	REVISED -					SHEET NO. OF SHEETS STA. TO STA.		FED. ROAD DIST. NO. [ILLINOIS] FED. AID PROJECT			