

158

03-06-2020 LETTING ITEM 158

STATE OF ILLINOIS
DEPARTMENT OF TRANSPORTATION

F.A.P. RTE	SECTION	COUNTY	TOTAL SHEETS	SHEET NO.
328	(10, 11)RS-3	WAYNE	31	3
		ILLINOIS	CONTRACT NO. 74925	

FOR INDEX OF SHEETS, SEE SHEET NO. 2

PROPOSED HIGHWAY PLANS

F.A.P. ROUTE 328 (US 45)
SECTION (10, 11)RS-3
PROJECT STP EGGU(990)
3P RESURFACING
WAYNE COUNTY

C-97-087-19

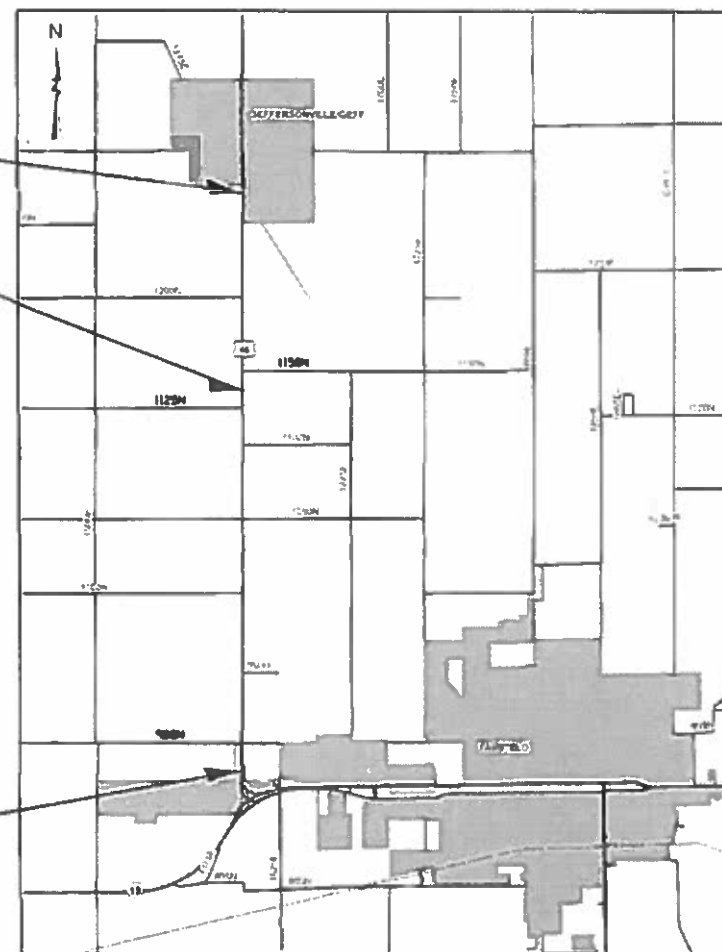
ADT = 4000 (2017)
10% TRUCKS



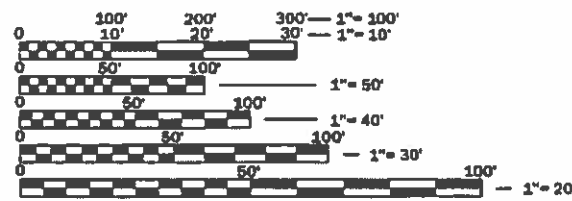
PROJECT ENDS
STA 213 + 40

BRIDGE OMISSION
STA 138 + 37.5 TO
STA 139 + 82.5

PROJECT BEGINS
STA 5 + 00



GROSS LENGTH = 20,840.00 FT. = 3.947 MILE
NET LENGTH = 20,695.00 FT. = 3.920 MILE



FULL SIZE PLANS HAVE BEEN PREPARED USING STANDARD ENGINEERING SCALES. REDUCED SIZED PLANS WILL NOT CONFORM TO STANDARD SCALES. IN MAKING MEASUREMENTS ON REDUCED PLANS, THE ABOVE SCALES MAY BE USED.

J.U.L.I.E.
JOINT UTILITY LOCATION INFORMATION FOR EXCAVATION
1-800-892-0123
OR 811

PROJECT ENGINEER: BRIAN LEWIS
PROJECT MANAGER: MARIA BLOEMER

CONTRACT NO. 74925

STATE OF ILLINOIS
DEPARTMENT OF TRANSPORTATION

SUBMITTED October 31 2019
Jeffrey P. Myer REGIONAL ENGINEER
Jan 31 2020
EA, ETC ENGINEER OF DESIGN AND ENVIRONMENT
Jan 31 2020
DIRECTOR OF HIGHWAYS PROJECT IMPLEMENTATION

PRINTED BY THE AUTHORITY
OF THE STATE OF ILLINOIS

GENERAL NOTES

THE PROPOSED PROJECT IS LOCATED ON US 45 FROM SOUTH CORPORATE LIMITS OF GEFF TO 0.2 MILES NORTH OF IL 15 NEAR FAIRFIELD.

THE WORK INCLUDED IN SECTION (10,11)RS-3 CONSISTS OF PATCHING, HMA SURFACE REMOVAL, HMA RESURFACING, SHOULDER RUMBLE STRIPS, AGGREGATE SHOULDERS, PAINT PAVEMENT MARKING, RAISED REFLECTIVE PAVEMENT MARKERS, PROTECTING OR RESETTING SURVEY MARKERS, SURVEY MARKER VAULTS, PERMANENT SURVEY MARKERS, AND OTHER NECESSARY WORK TO COMPLETE THE SECTION.

MILLING: FOR HMA SURFACE REMOVAL, 1 1/2", THE MILLING DEPTH SHALL REMOVE THE ENTIRE EXISTING SURFACE LIFT.

HMA SHOULDERS ARE TO BE PAVED IN CONJUNCTION WITH HMA BINDER AND SURFACE COURSES.

THE CONTRACTOR SHALL CONTACT THE RESIDENT ENGINEER 48 HOURS PRIOR TO A PAY FOR PERFORMANCE (PFP) OR QUALITY CONTROL FOR PERFORMANCE (QCP) START-UP.

MATERIAL FOR AGGREGATE SHOULDERS TYPE B, SHALL BE CRUSHED STONE OR CRUSHED CONCRETE, OR RAP.

MATERIAL FOR AGGREGATE SURFACE COURSE, TYPE B SHALL BE CRUSHED STONE, OR CRUSHED CONCRETE.

SHORT TERM PAVEMENT MARKING APPLIED TO ANY MILLED SURFACE SHALL BE PAINT AND THOSE APPLIED TO THE HMA COURSES SHALL BE TAPE.

QUANTITIES FOR PAINT PAVEMENT MARKING - LINE 4" CONSISTS OF 10,708 FEET OF YELLOW AND 40,816 FEET OF WHITE.

THE FOLLOWING MIXTURE REQUIREMENTS ARE APPLICABLE FOR THIS PROJECT:

APPLICATION	AC/PG	DESIGN AIR VOIDS	MIXTURE COMPOSITION	FRICTION AGGREGATE	QUALITY MANAGEMENT
BINDER COURSE	PG 64-22	4.0% $\text{N}_{\text{design}}=70$	IL - 9.5FG	N/A	QCP
SURFACE COURSE	PG 64-22	4.0% $\text{N}_{\text{design}}=70$	IL - 9.5	MIXTURE C	QCP
INCIDENTAL SURFACE	PG 64-22	4.0% $\text{N}_{\text{design}}=70$	IL - 9.5	MIXTURE C	QC/OA
CLASS D PATCHING	PG 64-22	4.0% $\text{N}_{\text{design}}=70$	IL - 19.0	N/A	QC/OA

THE FOLLOWING RATES OF APPLICATION HAVE BEEN USED IN CALCULATING PLAN QUANTITIES:

HOT MIX ASPHALT	112 LB/SQ YD/INCH
BITUMINOUS MATERIALS (TACK COAT)	
MILLED AND CONCRETE SURFACES	0.05 LB/SQ FT
FOG COAT ON BINDER COURSE	0.025 LB/SQ FT

INDEX OF SHEETS

SHEET NO.	ITEM
1	COVER SHEET
2	INDEX OF SHEETS & GENERAL NOTES
3	SUMMARY OF QUANTITIES
4-5	TYPICAL SECTIONS
6	SCHEDULE OF QUANTITIES
7-8	ENTRANCE SCHEDULE
9-10	SURVEY TIES
11-25	PLAN SHEETS
26	DETAILS
27-30	PAVEMENT MARKING DETAILS
31	SURVEY MARKER VAULT DETAIL

THE FOLLOWING STANDARDS ARE A PART OF THESE PLANS AND ARE INCLUDED FOLLOWING THE LAST NUMBERED SHEET OF THE PLANS.

406201-01	MAILBOX TURNOUT
442201-03	CLASS C AND D PATCHES
642006	SHOULDER RUMBLE STRIPS, 8 IN.
667101-02	PERMANENT SURVEY MARKERS
701001-02	OFF-ROAD OPERATIONS, 2L, 2W, MORE THAN 15' AWAY
701006-05	OFF-ROAD OPERATIONS, 2L, 2W, 15' TO 24" FROM PAVEMENT EDGE
701201-05	LANE CLOSURE, 2L, 2W, DAY ONLY, FOR SPEEDS \geq 45 MPH
701301-04	LANE CLOSURE, 2L, 2W, SHORT TIME OPERATIONS
701306-04	LANE CLOSURE, 2L, 2W, SLOW MOVING OPERATIONS DAY ONLY, FOR SPEEDS \geq 45 MPH
701311-03	LANE CLOSURE, 2L, 2W, MOVING OPERATIONS - DAY ONLY
701901-08	TRAFFIC CONTROL DEVICES
780001-05	TYPICAL PAVEMENT MARKINGS
781001-04	TYPICAL APPLICATIONS RAISED REFLECTIVE PAVEMENT MARKERS

MODEL: Default
 FILE: h:\mhc\p\pub\haronom.dwg
 PROJECT: 74925\CADD\DATA\CADD\Drawings\DOT - Offices\Drawings\74925-11c-gen-note.dgn

USER NAME = steffenmk	DESIGNED -	REVISED -
	DRAWN -	REVISED -
PLOT SCALE = 100.0000' / in.	CHECKED -	REVISED -
PLOT DATE = 11/4/2019	DATE -	REVISED -

**STATE OF ILLINOIS
DEPARTMENT OF TRANSPORTATION**

INDEX OF SHEETS & GENERAL NOTES

SCALE: SHEET OF SHEETS STA. TO STA.

F.A.P. RTE.	SECTION	COUNTY	TOTAL SHEETS	SHEET NO.
328	(10, 11)RS-3	WAYNE	31	2
			CONTRACT NO. 74925	
		ILLINOIS	FED. AID PROJECT	

80% FED
20% STATE

80% FED
20% STATE

SUMMARY OF QUANTITIES			TOTAL QUANTITIES	CONSTRUCTION TYPE CODE		
CODE NO	ITEM	UNIT		0005		
40200800	AGGREGATE SURFACE COURSE, TYPE B	TON	60	60		
40600290	BITUMINOUS MATERIALS (TACK COAT)	POUND	47178	47178		
40600990	TEMPORARY RAMP	SQ YD	72	72		
40602970	HOT-MIX ASPHALT BINDER COURSE, IL-9.5FG, N70	TON	6487	6487		
40604052	HOT-MIX ASPHALT SURFACE COURSE, IL-9.5, MIX "C", N70	TON	7832	7832		
40800050	INCIDENTAL HOT-MIX ASPHALT SURFACING	TON	350	350		
44000155	HOT-MIX ASPHALT SURFACE REMOVAL, 1 1/2"	SQ YD	69937	69937		
44201815	CLASS D PATCHES, TYPE II, 14 INCH	SQ YD	492	492		
44201819	CLASS D PATCHES, TYPE III, 14 INCH	SQ YD	17	17		
44201821	CLASS D PATCHES, TYPE IV, 14 INCH	SQ YD	25	25		
48101200	AGGREGATE SHOULDERS, TYPE B	TON	4800	4800		
64200108	SHOULDER RUMBLE STRIPS, 8 INCH	FOOT	36256	36256		
66700205	PERMANENT SURVEY MARKERS, TYPE I	EACH	11	11		
67000500	ENGINEER'S FIELD OFFICE, TYPE B	CAL MO	4	4		

SUMMARY OF QUANTITIES			TOTAL QUANTITIES	CONSTRUCTION TYPE CODE		
CODE NO	ITEM	UNIT		0005		
67000600	ENGINEER'S FIELD LABORATORY	CAL MO	4	4		
67100100	MOBILIZATION	L SUM	1	1		
70100450	TRAFFIC CONTROL AND PROTECTION, STANDARD 701201	L SUM	1	1		
70100460	TRAFFIC CONTROL AND PROTECTION, STANDARD 701306	L SUM	1	1		
70107025	CHANGEABLE MESSAGE SIGN	CAL DA	28	28		
70300100	SHORT TERM PAVEMENT MARKING	FOOT	6208	6208		
70300150	SHORT TERM PAVEMENT MARKING REMOVAL	SO FT	691	691		
70300220	TEMPORARY PAVEMENT MARKING - LINE 4"	FOOT	51524	51524		
* 78001110	PAINT PAVEMENT MARKING - LINE 4"	FOOT	51524	51524		
* 78100100	RAISED REFLECTIVE PAVEMENT MARKER	EACH	263	263		
X0326440	SURFACE REMOVAL, VARIABLE DEPTH (SPECIAL)	SO YD	3000	3000		
Z0033700	LONGITUDINAL JOINT SEALANT	FOOT	20695	20695		
Z0049799	PROTECTING OR RESETTING SURVEY MARKERS	EACH	15	15		
Z0070202	SURVEY MARKER VAULT	EACH	4	4		

* SPECIALTY ITEM

MODEL: Default
FILE: \\nas01c.psu.edu\pub\baronon.d\at\links\poc\RWIDOT\Documents\DOT_Offices\Bartlett_7\Projects\74925\CADData\CAD\Sheet\074925-shs-500.dgn

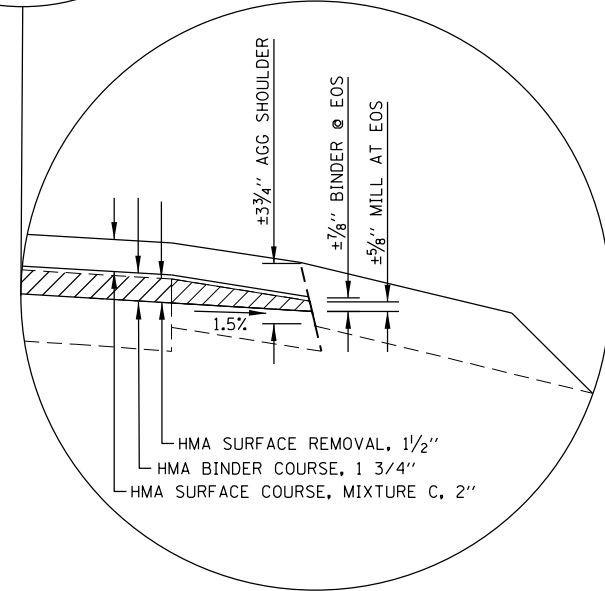
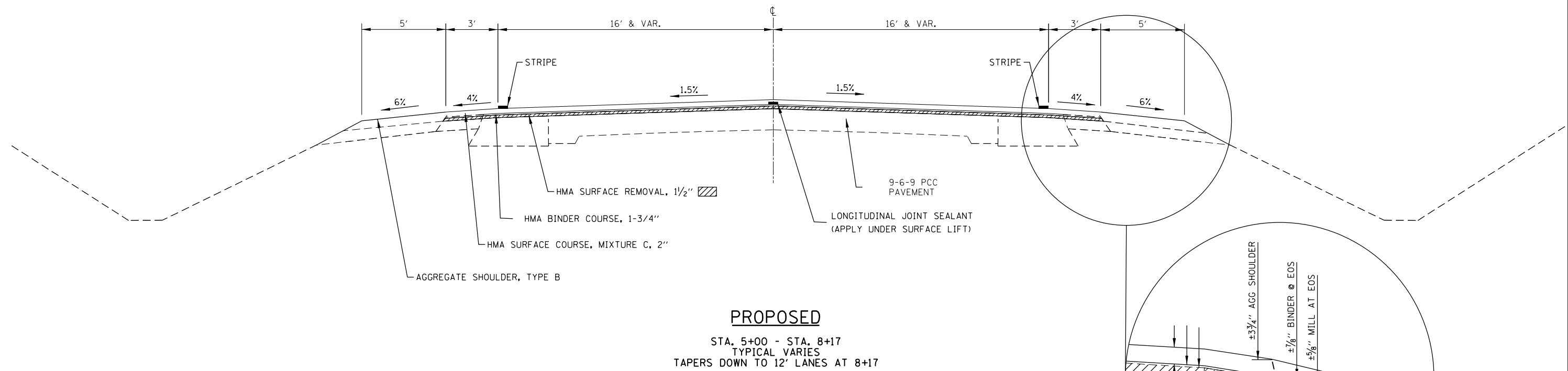
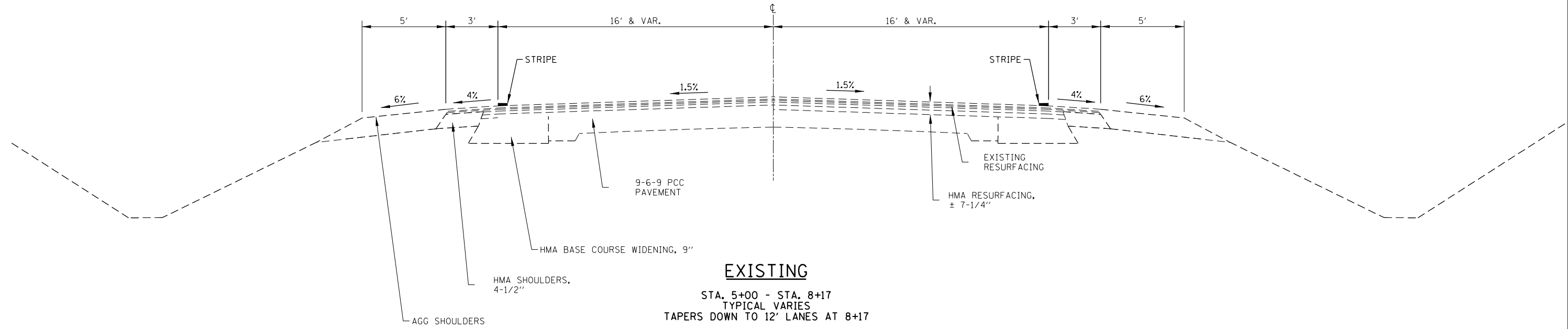
USER NAME = steffenmk	DESIGNED -	REVISED -
	DRAWN -	REVISED -
PLOT SCALE = 100.0000' / in.	CHECKED -	REVISED -
PLOT DATE = 11/1/2019	DATE -	REVISED -

STATE OF ILLINOIS
DEPARTMENT OF TRANSPORTATION

SUMMARY OF QUANTITIES

SCALE: SHEET OF SHEETS STA. TO STA.

F.A.P. RTE.	SECTION	COUNTY	TOTAL SHEETS	SHEET NO.
328	(10, 11)RS-3	WAYNE	31	3
CONTRACT NO. 74925			ILLINOIS FED. AID PROJECT	



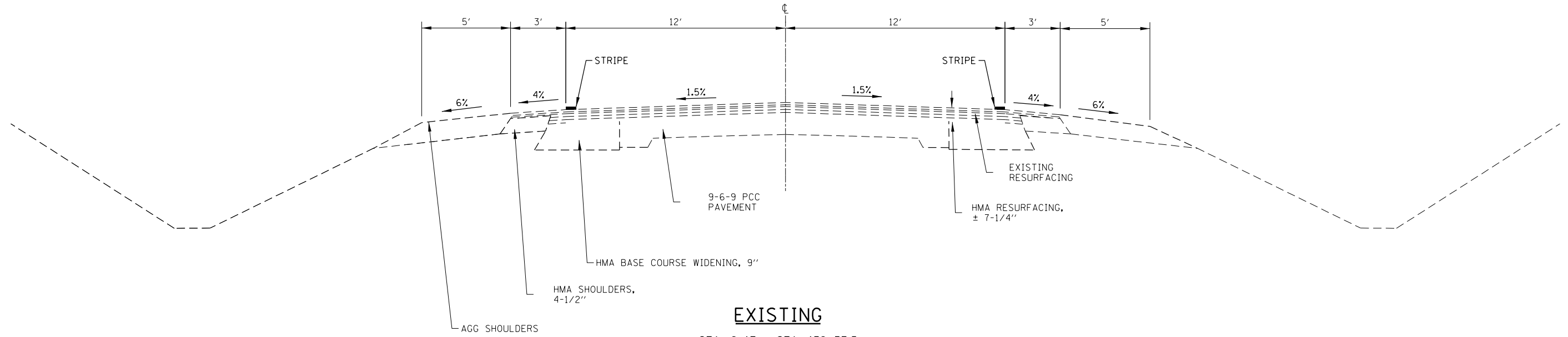
NOT TO SCALE

FILE NAME =	USER NAME = steffennik	DESIGNED -	REVISED -
p:\planroom\dot\illinois.gov\PWIDOT\Documents\IDOT	Office\District 7\Projects\74925\CADData\CADsheets\ID774925-	DRW	REVISED -
Default	PLOT SCALE = 100,0000' / in.	CHECKED -	REVISED -
	PLOT DATE = 11/1/2019	DATE -	REVISED -

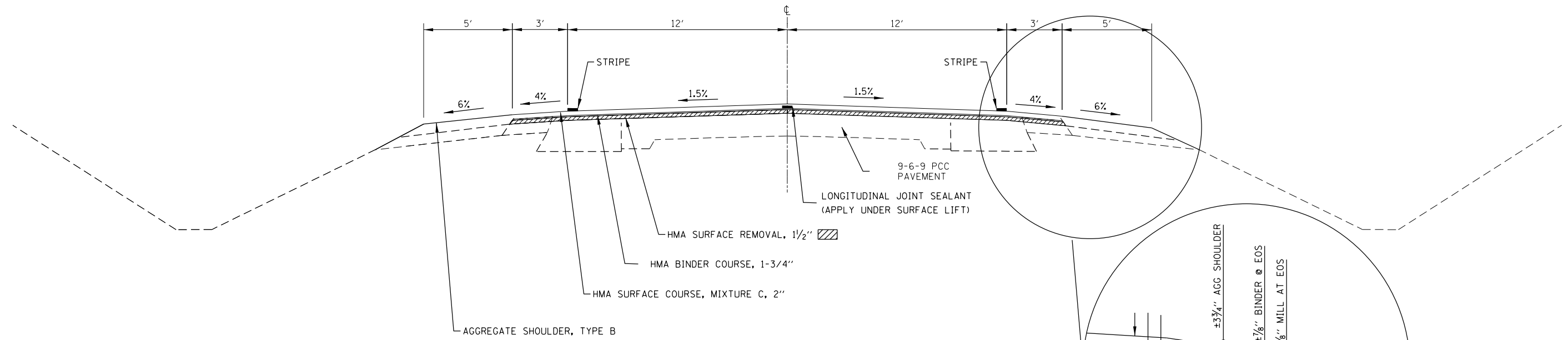
**STATE OF ILLINOIS
 DEPARTMENT OF TRANSPORTATION**

TYPICAL SECTIONS			
SCALE:	SHEET 1	OF 2 SHEETS	STA. 5+00 TO STA. 8+17

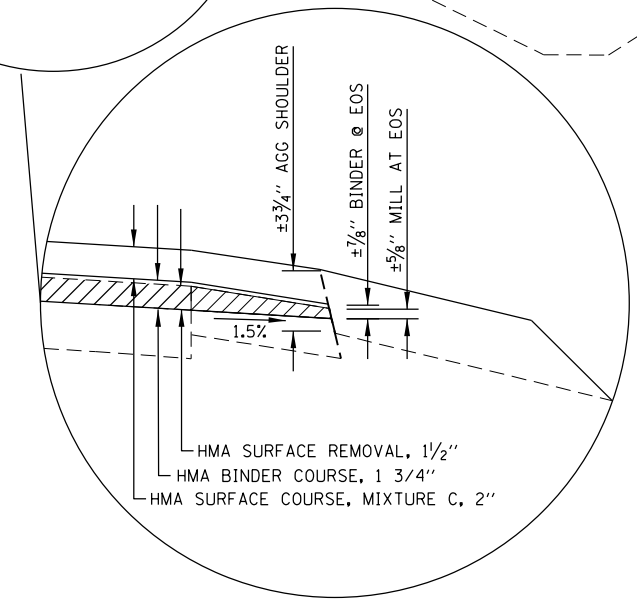
F.A.P. RTE.	SECTION	COUNTY	TOTAL SHEETS	SHEET NO.
328	(10, 11)RS-3	WAYNE	31	4
ILLINOIS FED. AID PROJECT			CONTRACT NO. 74925	



STA. 8+17 - STA. 138+37.5
 STA. 138+37.5 - STA. 139+82.5 - BRIDGE OMISSION
 STA. 139+82.5 - STA. 213+40



STA. 8+17 - STA. 138+37.5
 STA. 138+37.5 - STA. 139+82.5 - BRIDGE OMISSION
 STA. 139+82.5 - STA. 213+40



NOT TO SCALE

FILE NAME =	USER NAME = steffennik	DESIGNED -	REVISED -	STATE OF ILLINOIS DEPARTMENT OF TRANSPORTATION	TYPICAL SECTIONS			F.A.P. RTE.	SECTION	COUNTY	TOTAL SHEETS	SHEET NO.			
pw:\planroom\dot\illinois\gov\PWIDOT\Documents\IDOT	Office\District 7\Projects\74925\CADData\CADsheets\ID774925-	DRW	REVISED -		SCALE:	SHEET 2	OF 2	SHEETS	STA. 8+17	TO STA. 213+40	328	(10, 11)RS-3	WAYNE	31	5
Default	PLOT SCALE = 100.0000' / in.	CHECKED -	REVISED -		CONTRACT NO. 74925										
	PLOT DATE = 11/11/2019	DATE -	REVISED -		ILLINOIS FED. AID PROJECT										

PAVING SCHEDULE

STATION	TO	STATION	LENGTH	WIDTH	AREA	HOT-MIX ASPHALT SURFACE REMOVAL, 1 1/2"	•BITUMINOUS MATERIAL (TACK COAT)	LONGITUDINAL JOINT SEALANT	HOT-MIX ASPHALT SURFACE COURSE, MIX "C", N70
			FOOT	FOOT	SQ YD	SQ YD	POUNDS	FOOT	TONS
5+00		8+17	317	38	1198	1198	799	317	134
8+17		13+80	563	30	1877	1877	1267	563	210
13+80		60+86	4706	30	15687	15687	10589	4706	1757
60+86		109+47	4861	30	16203	16203	10937	4861	1815
109+47		133+78	2431	30	8103	8103	5470	2431	908
133+78		138+37.5	460	30	1532	1932	1297	460	216
139+82.5		143+56	374	30	1245	1657	1111	374	186
143+56		185+83	4227	30	14090	14090	9511	4227	1578
185+83		197+30	1147	30	3823	3823	2581	1147	428
197+30		201+89	459	30	1530	1530	1033	459	171
201+89		205+03	314	30	1047	1047	707	314	117
205+03		209+14	411	30	1370	1370	925	411	153
209+14		213+40	426	30	1420	1420	951	426	159
TOTALS			20695		69125	69937	47178	20695	7832

• 0.05 LBS/SQ FT ON MILLED SURFACE & 0.025 LBS/SQ FT ON BINDER COURSE - RATE CALCS FOR BITUMINOUS MATERIALS (TACK COAT)

PAVEMENT MARKING SCHEDULE

STATION	TO	STATION	LENGTH	SHORT TERM PAVEMENT MARKING (YELLOW)	SHORT TERM PAVEMENT MARKING REMOVAL	PAINT PAVEMENT MARKING LINE 4" (WHITE)	PAINT PAVEMENT MARKING LINE 4" (YELLOW)	TEMPORARY PAVEMENT MARKING LINE 4" (WHITE)	TEMPORARY PAVEMENT MARKING LINE 4" (YELLOW)	RAISED REFLECTIVE PAVEMENT MARKERS (2 WAY AMBER)
			FOOT	FOOT	SQ FT	FOOT	FOOT	FOOT	FOOT	FOOT
5+00		8+17	317	95	11	634	396	634	396	5
8+17		138+37.5	13021	3906	434	25583	8473	25583	8473	164
139+82.5		197+30	5748	1724	192	11379	1437	11379	1437	74
197+30		205+03	773	232	26	1546	193	1546	193	10
205+03		213+40	837	251	28	1674	209	1674	209	10
TOTALS			20695	6208	691	40816	10708	40816	10708	263
						51524	51524			

SURVEY MARKER SCHEDULE

STATION	O/S	SURVEY POINT	PROTECTING OR RESETTING SURVEY MARKER	SURVEY MARKER VAULT	PERMANENT SURVEY MARKER, TYPE I
			EACH	EACH	EACH
12+00.01	0.0'	1010	1	0	1
16+19.96	1.36' LT	1000	1	1	0
20+00.01	0.0'	1011	1	0	1
22+11.00	0.0'	1012	1	0	1
43+00.00	0.0'	1013	1	0	1
67+00.00	0.0'	1001	1	0	1
69+57.76	0.0'	1002	1	1	0
87+00.00	0.0'	1003	1	0	1
110+00.11	0.0'	1004	1	0	1
122+81.70	0.0'	1005	1	1	0
123+10.06	0.0'	1014	1	0	1
149+99.95	0.0'	1006	1	0	1
175+90.85	0.0'	1007	1	0	1
175+88.44	0.0'	1008	1	1	0
208+00.00	0.0'	1009	1	0	1
TOTALS			15	4	11

PAVING SCHEDULE

STATION	TO	STATION	LENGTH	WIDTH	AREA	HOT-MIX ASPHALT BINDER COURSE, IL-9.5FG, N70
			FOOT	FOOT	SQ YD	TONS
5+10		5+45	35	36	139	7
5+45		8+17	272	35	983	91
8+17		13+80	563	30	1877	175
13+80		60+86	4706	30	15687	1461
60+86		109+47	4861	30	16203	1508
109+47		133+78	2431	30	8103	754
133+78		137+92.5	415	30	1782	158
137+92.5		138+27.5	35	30	517	21
139+92.5		140+27.5	35	30	528	21
140+27.5		143+56	329	30	1507	132
143+56		185+83	4227	30	14090	1312
185+83		197+30	1147	30	3823	356
197+30		201+89	459	30	1530	142
201+89		205+03	314	30	1047	97
205+03		209+14	411	30	1370	127
209+14		212+95	381	30	1270	119
212+95		213+30	35	30	117	6
TOTALS			20655		70573	6487

SHOULDER SCHEDULE

STATION	TO	STATION	LENGTH	PRA/MBT/ ENTRANCE DEDUCT	SHOULDER RUMBLE STRIP, 8 INCH	AGGREGATE SHOULDER, TYPE B
			FOOT	FOOT	FOOT	TON
5+00		8+17	317	77	557	73
8+17		138+37.5	13021	3564	22477	2933
139+82.5		197+30	5748	1066	10429	1361
197+30		205+03	773	311	1235	161
205+03		213+40	837	116	1558	203
TOTALS			20695	5134	36256	4731
FINAL TOTALS			20695	5134	36256	4800

TEMPORARY RAMP SCHEDULE

STATION	TO	STATION	LENGTH	WIDTH	AREA	TEMPORARY RAMP
			FOOT	FOOT	SQ FT	SQ YD
5+00		5+05	5.0	36-38	185	21
138+32.5		138+37.5	5.0	30	150	17
139+82.5		139+87.5	5.0	30	150	17
213+35		213+40	5.0	30	150	17
TOTALS						72

MODEL: Default
 FILE: \\hpc-pub\hpcroom\dat\illinois\pav\pav\DOT\Documents\DOT_Offices\Illinet\74925\CADD\Drawings\74925-sht-schedule.dgn

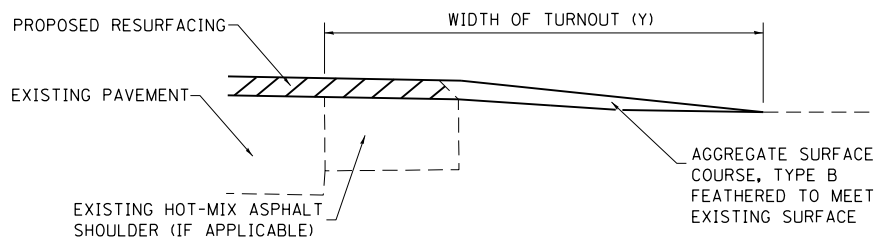
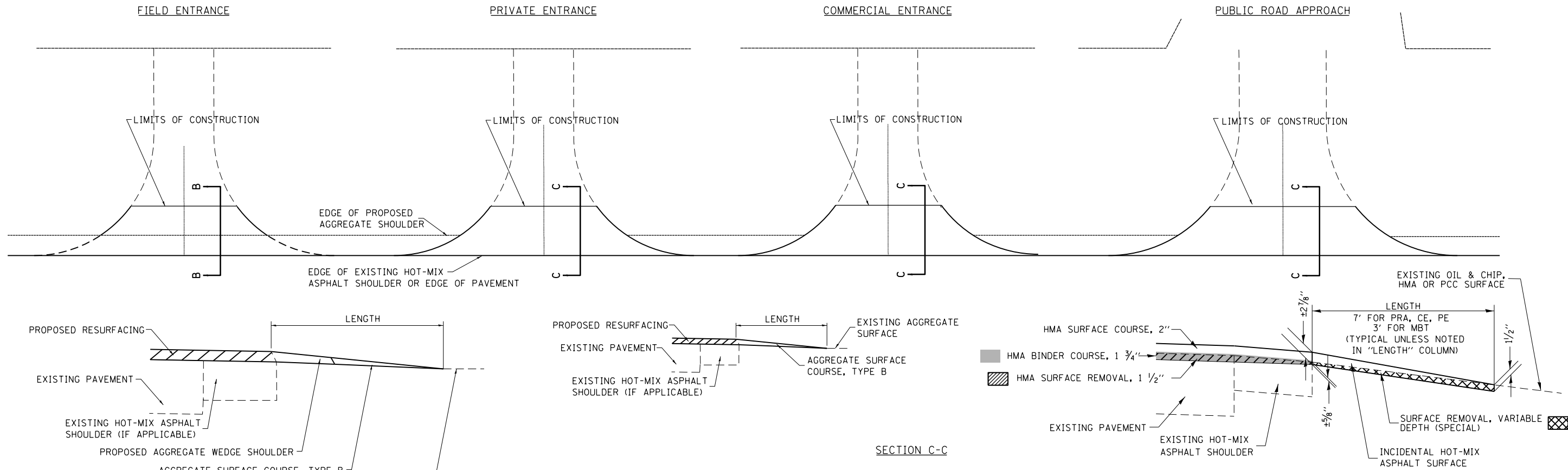
USER NAME = steffemk	DESIGNED -	REVISED -
PLOT SCALE = 100.0000' / in.	DRAWN -	REVISED -
PLOT DATE = 11/1/2019	CHECKED -	REVISED -
	DATE -	REVISED -

**STATE OF ILLINOIS
DEPARTMENT OF TRANSPORTATION**

SCHEDULE OF QUANTITIES

SCALE: SHEET OF SHEETS STA. TO STA.

F.A.P. RTE.	SECTION	COUNTY	TOTAL SHEETS	SHEET NO.
328	(10, 11)RS-3	WAYNE	31	6
CONTRACT NO. 74925				
ILLINOIS		FED. AID PROJECT		



TYPICAL SECTION AT MAILBOX TURNOUT

NOTE: SEE STANDARD 406201 FOR MAILBOX TURNOUT DETAILS

NOTES

LENGTH = 7' UNLESS OTHERWISE NOTED ON PLANS OR "LENGTH" COLUMN

IF THERE IS NOT EXISTING HOT-MIX ASPHALT SHOULDER THEN THE ENTRANCE TAPER STARTS AT THE EDGE OF EXISTING PAVEMENT.

THE COST OF THE BITUMINOUS MATERIALS (TACK COAT) FOR ENTRANCES AND PUBLIC ROAD APPROACHES SHALL BE INCLUDED IN THE PAY ITEM INCIDENTAL HOT-MIX ASPHALT SURFACING.

SIDE	STATION	TYPE	SURFACE REMOVAL, VARIABLE DEPTH (SPECIAL)		INCIDENTAL HOT-MIX ASPHALT SURFACING	AGGREGATE SURFACE COURSE, TYPE B		LENGTH
			SO	YD		TON	FOOT	
LT	06+03	CE	49		6	0		
RT	08+44	CE	76		9	0	10	
LT	11+32.5	CE	62		7	0	9.5	
RT	13+80	CE	49		6	0		
RT	14+77	CE	48		6	0		
RT	16+20	PRA	43		5	0		
LT	16+20	PRA	42		5	0		
LT	17+46	CE	44		5	0		
LT	18+96	PE	22		3	0		
LT	20+00	PE	23		3	0		
LT	21+13	PE	24		3	0		
LT	22+40	FE	0		0	2		
RT	23+63	CE	40		5	0		
LT	24+13	PE	19		2	0		
RT	25+41	CE	41		5	0		
LT	27+08	PE	21		2	0		
LT	27+16	PE	23		3	0		
LT	28+13	PE	21		2	0		
LT	36+20	PE	31		4	0		
RT	36+41	FE	0		0	2		

SIDE	STATION	TYPE	SURFACE REMOVAL, VARIABLE DEPTH (SPECIAL)		INCIDENTAL HOT-MIX ASPHALT SURFACING	AGGREGATE SURFACE COURSE, TYPE B		LENGTH
			SO	YD		TON	FOOT	
LT	37+52	PE	49		6	0		
RT	39+46	FE	0		0	3		
RT	41+35.62	PRA	54		6	0	8.5	
LT	43+10	FE	0		0	3		
RT	45+83	CE	88		10	0	11	
LT	46+00	PE	37		4	0		
RT	47+28	CE	51		6	0		
RT	49+34	PE	28		3	0		
RT	51+12	CE	48		6	0		
LT	52+00	PE	46		5	0		
RT	52+67	CE	46		5	0		
LT	54+77	CE	70		8	0	9.5	
RT	55+95	CE	45		5	0		
LT	57+54	CE	50		6	0		
RT	57+70	PE	22		3	0		
LT	59+36	CE	48		6	0		
RT	60+86	PE	21		2	0		
LT	61+52	PE	23		3	0		
RT	67+79	PE	25		3	0		
LT	69+58	PRA	39		5	0		

SIDE	STATION	TYPE	SURFACE REMOVAL, VARIABLE DEPTH (SPECIAL)		INCIDENTAL HOT-MIX ASPHALT SURFACING	AGGREGATE SURFACE COURSE, TYPE B		LENGTH
			SO	YD		TON	FOOT	
RT	69+76	PE	39		5	0		
RT	70+92.5	PE	23		3	0		
LT	77+92	PE	0		0	3		
RT	78+49	FE	0		0	2		
RT	82+47	PE	30		3	0		
LT	82+65	PE	0		0	4		
LT	86+33	PE	33		4	0	12	
RT	86+61	FE	0		0	2		
LT	89+59	CE	47		5	0		
LT	90+47	PE	24		3	0		
LT	96+13	PRA	35		4	0		
RT	96+15	PRA	34		4	0		
RT	99+90	FE	0		0	4		
LT	102+78	PE	38		4	0		
LT	103+34	PE	29		3	0		
RT	104+85	PE	23		3	0		
LT	107+46	PE	43		5	0		
RT	108+17	FE	0		0	2		
LT	109+47	FE	0		0	2		
RT	109+81	FE	0		0	2		

SIDE	STATION	TYPE	SURFACE REMOVAL, VARIABLE DEPTH (SPECIAL)		INCIDENTAL HOT-MIX ASPHALT SURFACING	AGGREGATE SURFACE COURSE, TYPE B		LENGTH
			SO	YD		TON	FOOT	
RT	117+53	CE	46		5	0		
LT	117+67	PE	45		5	0	9.5	
RT	119+32	CE	49		6	0		
LT	122+79	FE	0		0	2		
RT	122+84	PRA	39		5	0		
LT	125+81	FE	0		0	3		
RT	129+90	PE	26		3	0		
LT	132+48	PE	30		3	0		
LT	136+13	PRA	40		5	0		
LT	149+35	FE	0		0	2		
RT	149+43	PRA	44		5	0		
RT	158+18	PE	19		2	0		
RT	159+06	PE	25		3	0		
LT	160+25	CE	49		6	0		
LT	162+59	CE	42		5	0		
RT	164+09	PE	27		3	0	8.5	
RT	165+43	PE	30		3	0	9.5	
RT	167+12	FE	0		0	2		

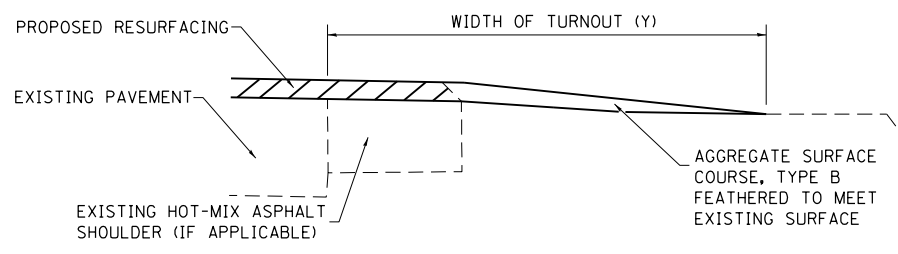
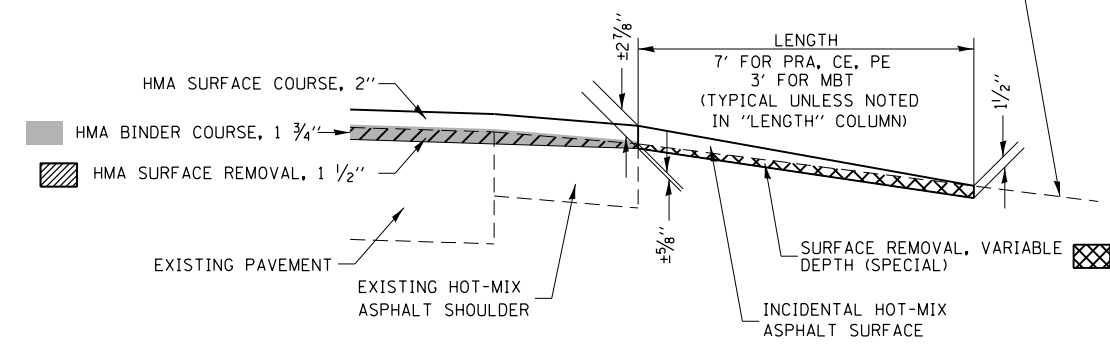
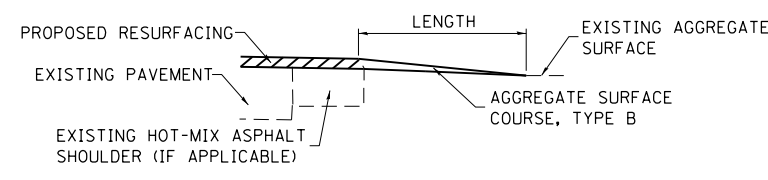
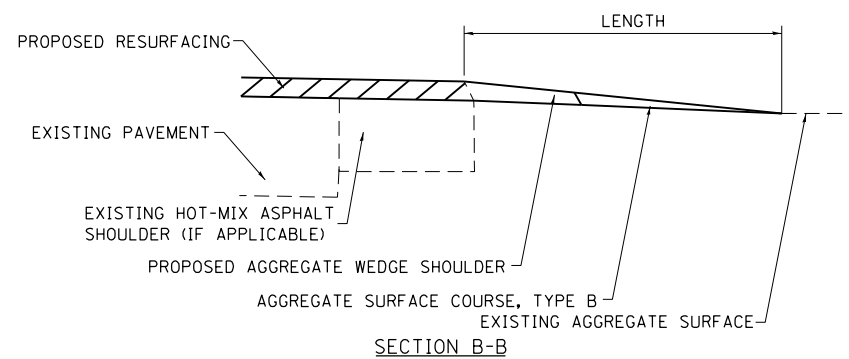
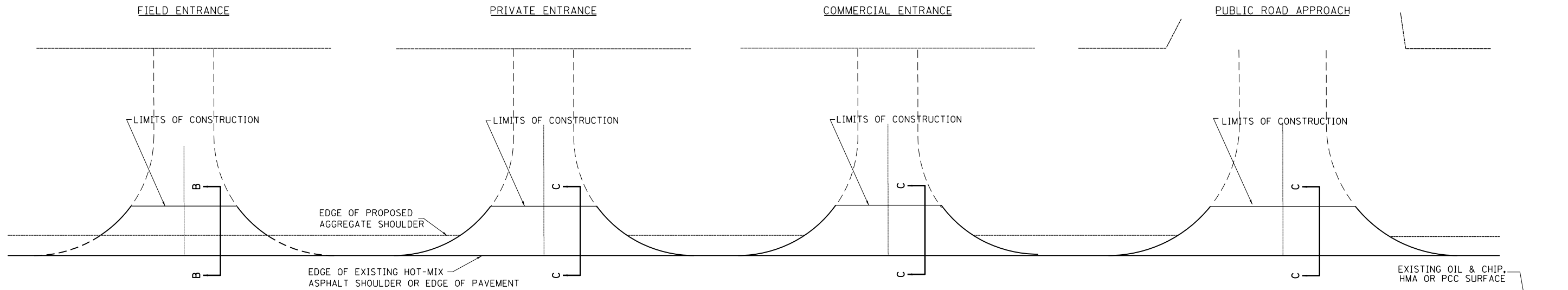
FE=FIELD ENTRANCE
PE=PRIVATE ENTRANCE
CE=COMMERCIAL ENTRANCE
PRA - PUBLIC ROAD APPROACH
MBT - MAILBOX TURNOUT

**STATE OF ILLINOIS
DEPARTMENT OF TRANSPORTATION**

**RURAL ENTRANCE SCHEDULE AND MAILBOX TURNOUT DETAILS
WITH SHOULDERS**

SCALE: SHEET 1 OF 2 SHEETS STA. TO STA.

F.A.P. RTE.	SECTION	COUNTY	TOTAL SHEETS	SHEET NO.
328	(10, 11)RS-3	WAYNE	31	7
CONTRACT NO. 74925				
ILLINOIS FED. AID PROJECT				



TYPICAL SECTION AT MAILBOX TURNOUT
NOTE: SEE STANDARD 406201 FOR MAILBOX TURNOUT DETAILS

NOTES

LENGTH = 7' UNLESS OTHERWISE NOTED ON PLANS OR "LENGTH" COLUMN

IF THERE IS NOT EXISTING HOT-MIX ASPHALT SHOULDER THEN THE ENTRANCE TAPER STARTS AT THE EDGE OF EXISTING PAVEMENT.

THE COST OF THE BITUMINOUS MATERIALS (TACK COAT) FOR ENTRANCES AND PUBLIC ROAD APPROACHES SHALL BE INCLUDED IN THE PAY ITEM INCIDENTAL HOT-MIX ASPHALT SURFACING.

SIDE	STATION	TYPE	SURFACE REMOVAL, VARIABLE DEPTH (SPECIAL)		INCIDENTAL HOT-MIX ASPHALT SURFACING	AGGREGATE SURFACE COURSE, TYPE B	LENGTH
			SO YD	TON			
RT	168+08	PE	21	2	0		
RT	172+66	FE	0	0	2		
RT	175+61	PE	23	3	0		
LT	175+92	PRA	44	5	0		
RT	177+15	PE	30	3	0		
LT	180+20	PE	30	3	0		
LT	181+03	PE	47	5	0		
RT	182+60	FE	0	0	3		
LT	185+83	FE	0	0	2		
RT	189+89	PE	32	4	0		
LT	192+23	PE	24	3	0		
RT	192+63	FE	0	0	2		
RT	194+21	PE	29	3	0		
LT	194+74	PE	22	3	0		
RT	197+30	CE	49	6	0		
LT	198+12	PE	0	0	3		
RT	198+26	CE	49	6	0		
LT	200+04	PE	0	0	3		
RT	200+90	PE	24	3	0		
RT	201+89	PE	24	3	0		

SIDE	STATION	TYPE	SURFACE REMOVAL, VARIABLE DEPTH (SPECIAL)		INCIDENTAL HOT-MIX ASPHALT SURFACING	AGGREGATE SURFACE COURSE, TYPE B	LENGTH
			SO YD	TON			
LT	203+01	PE	23	3	0		
RT	205+03	PE	29	3	0		
RT	208+40	PE	30	3	0		
LT	209+14	PE	43	5	0		
RUNNING TOTAL			2950	344	55		
FINAL TOTAL			3000	350	60		

SIDE	STATION	TYPE	SURFACE REMOVAL, VARIABLE DEPTH (SPECIAL)		INCIDENTAL HOT-MIX ASPHALT SURFACING	AGGREGATE SURFACE COURSE, TYPE B	LENGTH
			SO YD	TON			

SIDE	STATION	TYPE	SURFACE REMOVAL, VARIABLE DEPTH (SPECIAL)		INCIDENTAL HOT-MIX ASPHALT SURFACING	AGGREGATE SURFACE COURSE, TYPE B	LENGTH
			SO YD	TON			

FE=FIELD ENTRANCE PRA - PUBLIC ROAD APPROACH
PE=PRIVATE ENTRANCE MBT - MAILBOX TURNOUT
CE=COMMERCIAL ENTRANCE

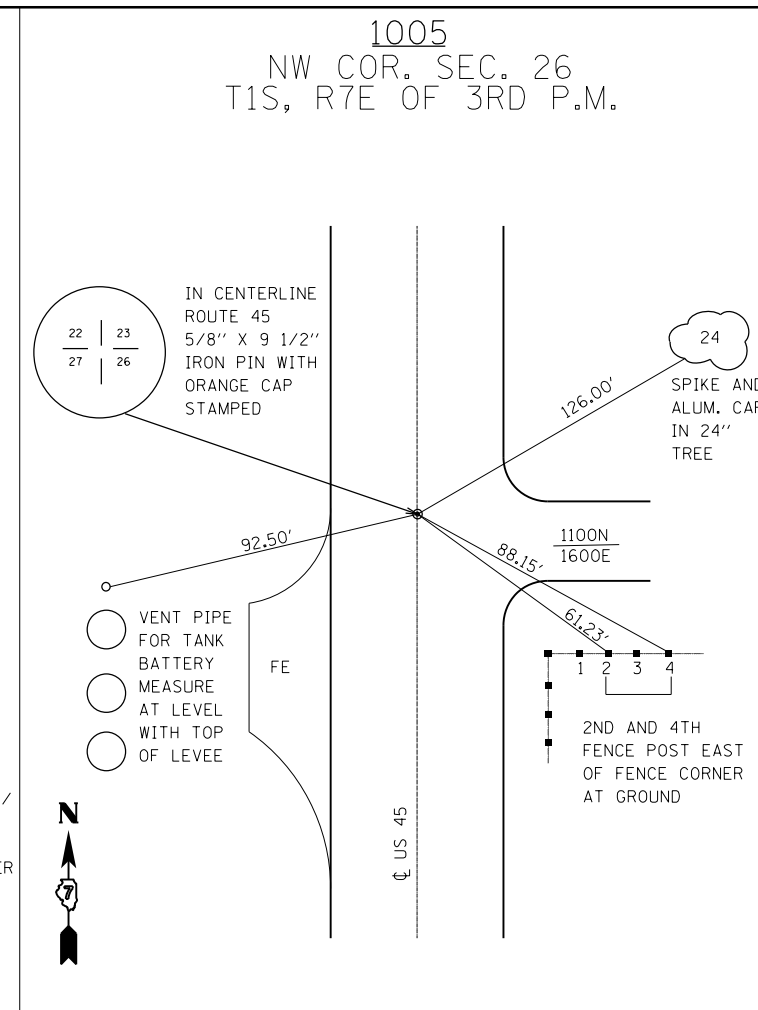
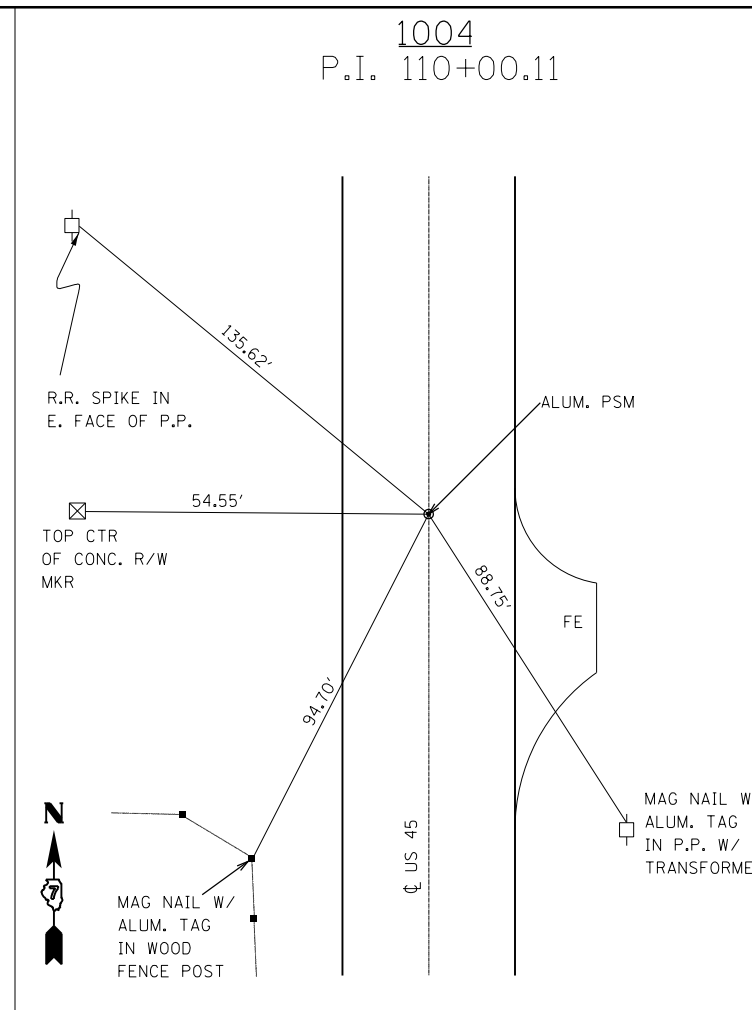
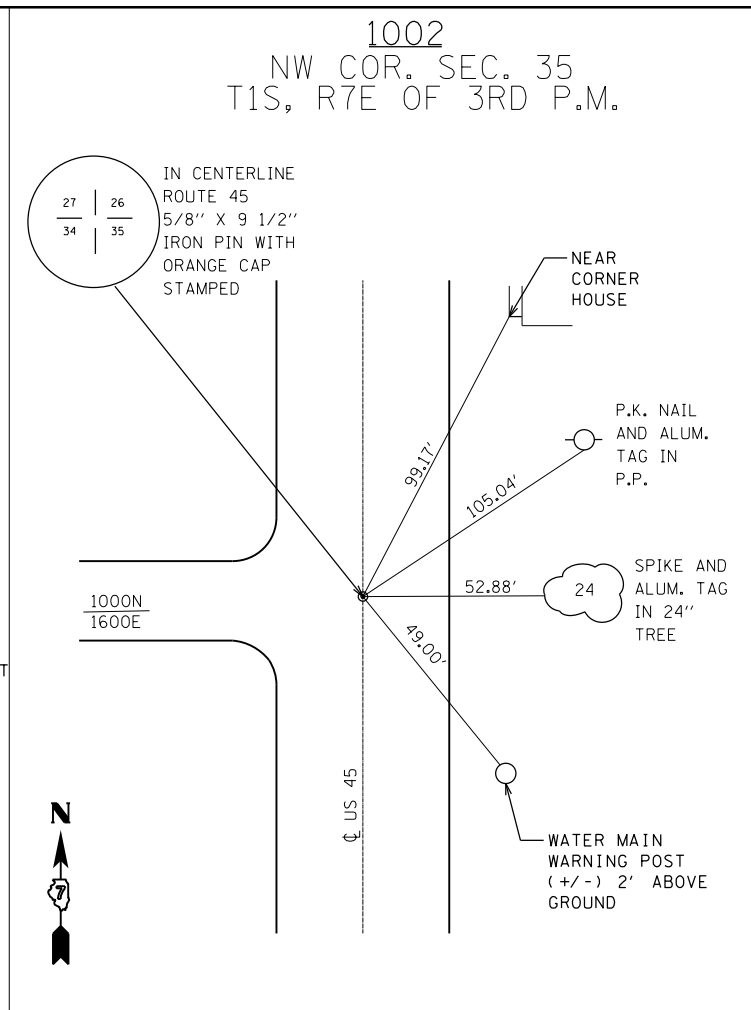
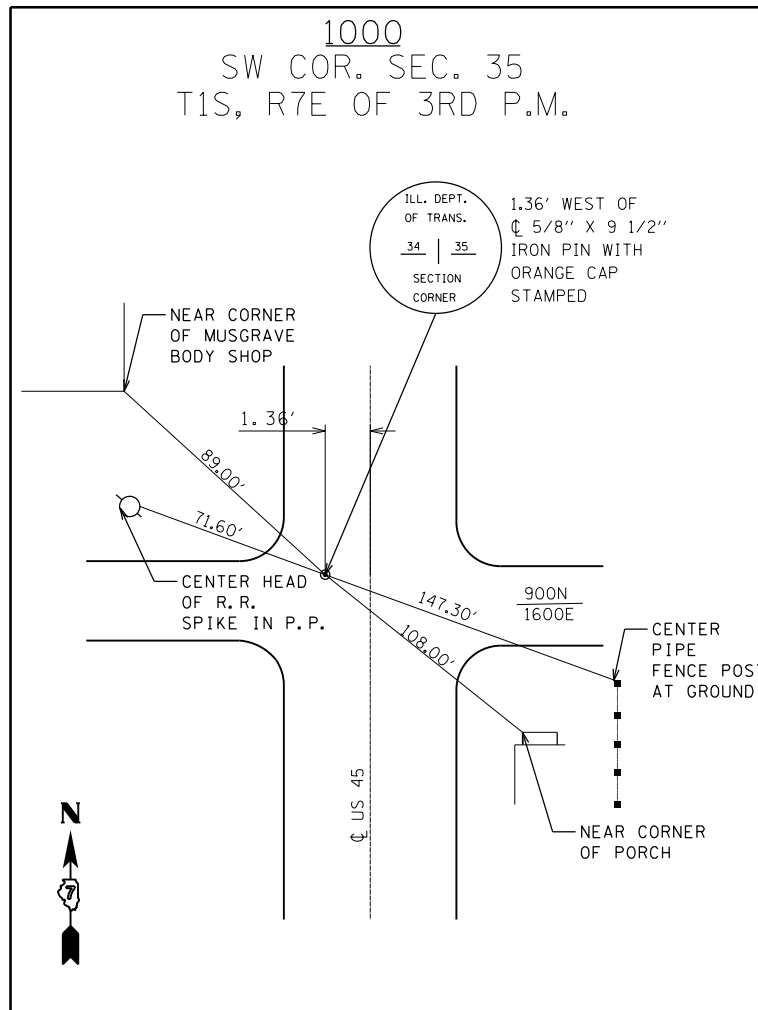
MODEL: Default
FILE: h:\m\c\p\pub\barroom.dwg
PROJECT: 74925\CAD\Drawings\DOT - Offices\Drawings\74925\shc-drawings.dwg

USER NAME = stefenmk	DESIGNED - 08-03-99	REVISED - 03-13-07
PLOT SCALE = 100.0000 ' / in.	CHECKED -	REVISED -
PLOT DATE = 11/1/2019	DATE -	REVISED -

**STATE OF ILLINOIS
DEPARTMENT OF TRANSPORTATION**

**RURAL ENTRANCE SCHEDULE AND MAILBOX TURNOUT DETAILS
WITH SHOULDERS**
SCALE: SHEET 2 OF 2 SHEETS STA. TO STA.

F.A.P. RTE.	SECTION	COUNTY	TOTAL SHEETS	SHEET NO.
328	(10, 11)RS-3	WAYNE	31	8
CONTRACT NO. 74925				
ILLINOIS		FED. AID PROJECT		



SCHEDULE OF EXISTING SECTION CORNERS AND MONUMENTS (W/TIES)

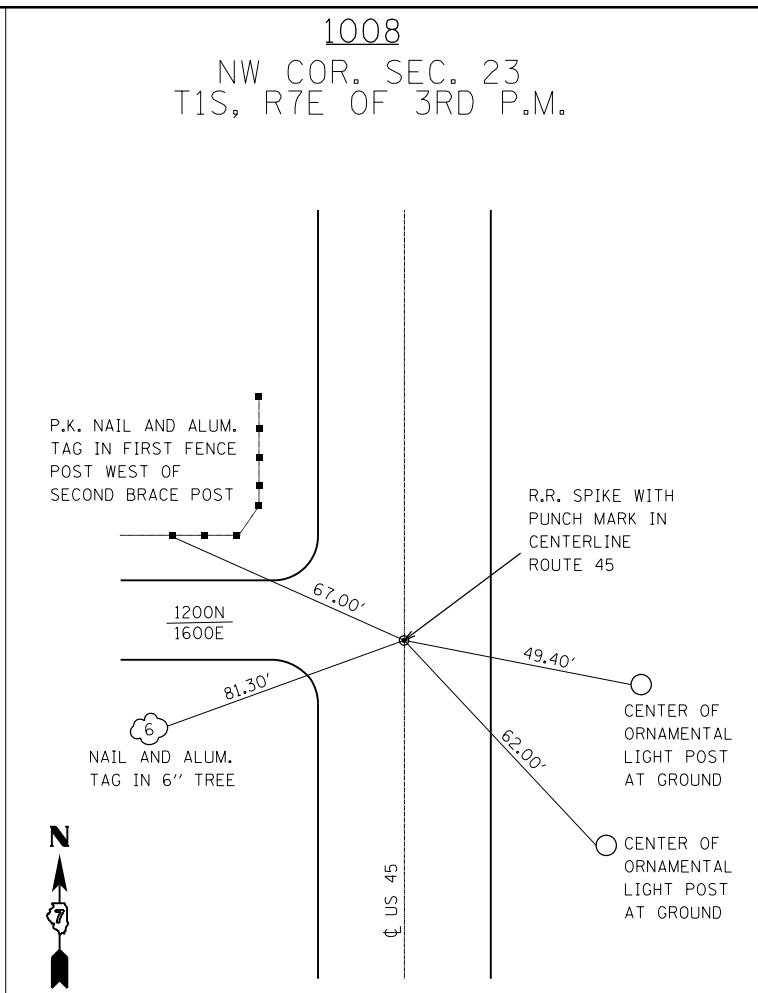
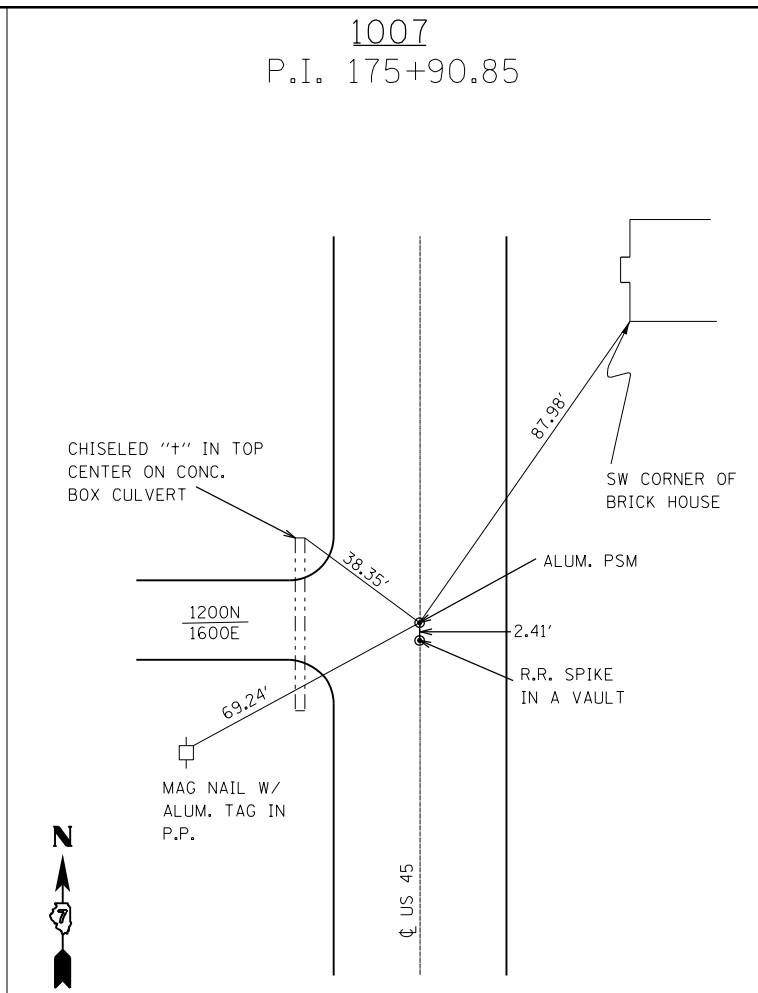
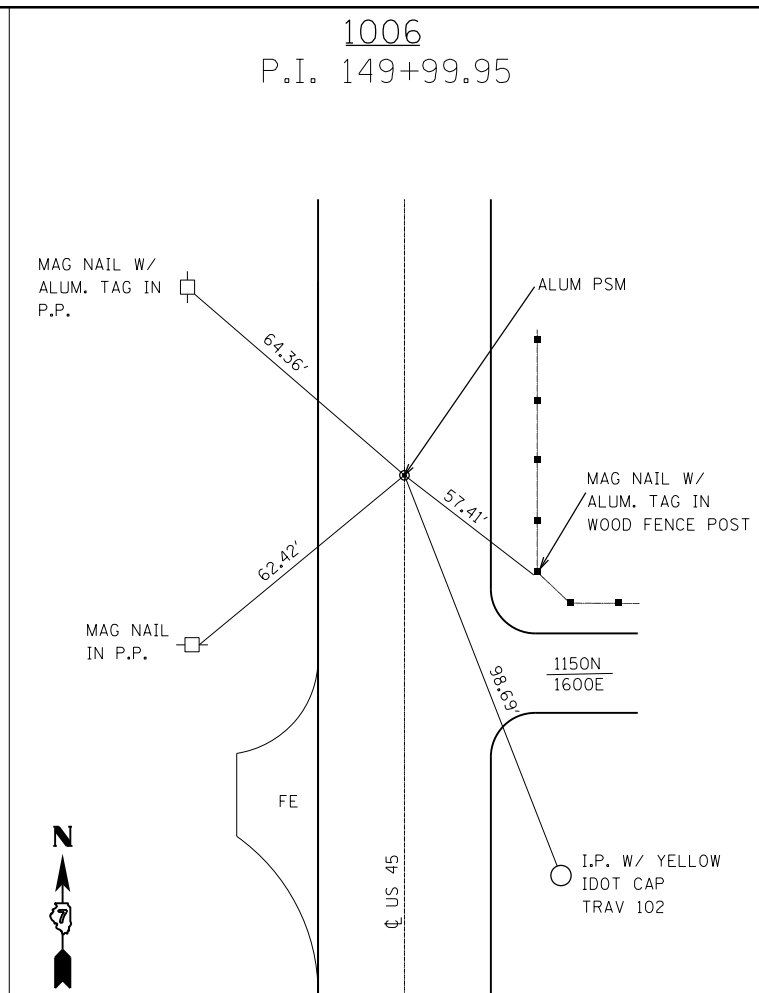
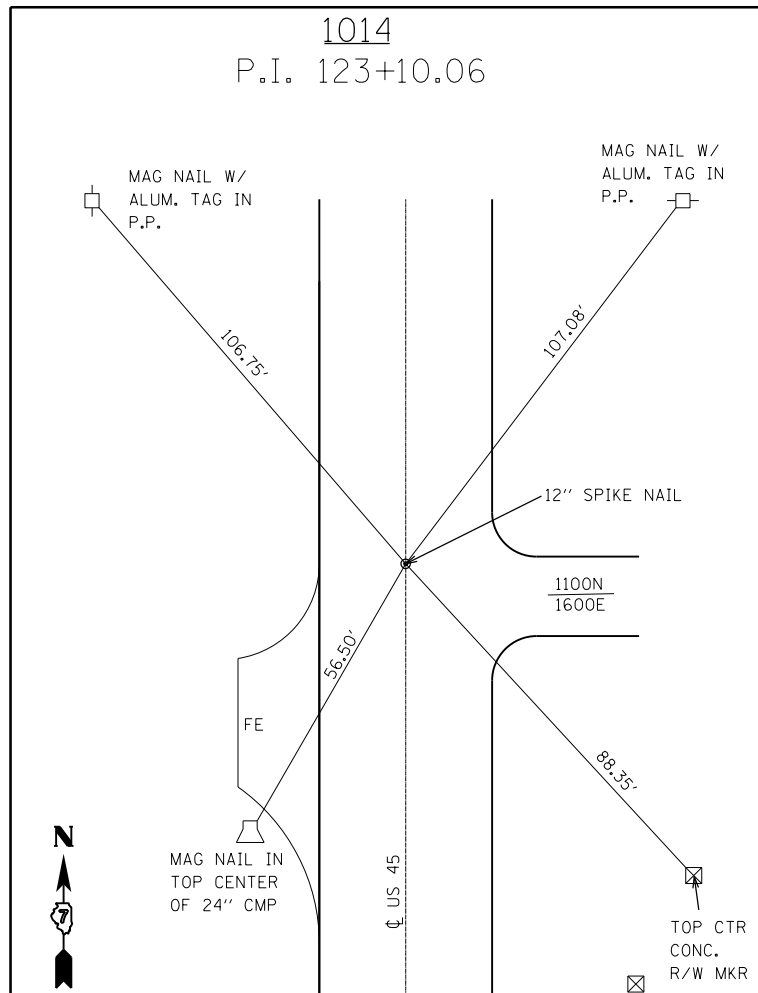
Station	Off-Set	Description	Point	PROPOSED PRESERVATION METHOD
16+19.96	1.36' LT	IP WITH ORANGE CAP IN 2" PIPE @CR 900N	1000	PROTECT & INSTALL SURVEY VAULT
69+57.76	0.00'	IP WITH ORANGE CAP @ CENTERLINE IN 2" PIPE @ CR 1000N	1002	PROTECT & INSTALL SURVEY VAULT
110+00.11	0.00'	DISK @ CENTERLINE	1004	RESET IDOT DISK
122+81.70	0.00'	IP WITH ORANGE CAP @ CENTERLINE IN 2" PIPE @ CR 1100N	1005	PROTECT & INSTALL SURVEY VAULT

SCHEDULE OF EXISTING SECTION CORNERS AND MONUMENTS (W/O TIES)

Station	Off-Set	Description	TYPE	Point	PROPOSED PRESERVATION METHOD
12+00.01	0.00'	DISK @ CENTERLINE	PC	1010	RESET IDOT DISK
20+00.01	0.00'	DISK @ CENTERLINE	PT	1011	RESET IDOT DISK
22+11.00	0.00'	DISK @ CENTERLINE	PI	1012	RESET IDOT DISK
43+00.00	0.00'	DISK @ CENTERLINE	PI	1013	RESET IDOT DISK
67+00.00	0.00'	DISK @ CENTERLINE	PI	1001	RESET IDOT DISK
87+00.00	0.00'	DISK @ CENTERLINE STAMPED 87+00	PI KINK	1003	RESET IDOT DISK
208+00.00	0.00'	DISK WITH PUNCHMARK @ CENTERLINE	PC	1009	RESET IDOT DISK

NOT TO SCALE

FILE NAME =	USER NAME = steffenmk	DESIGNED -	REVISED -	STATE OF ILLINOIS DEPARTMENT OF TRANSPORTATION	SURVEY TIES	F.A.P. RTE.	SECTION	COUNTY	TOTAL SHEETS	SHEET NO.	
pw:\planroom.dot.illinois.gov\PIDOT\Documents\IDOT Offices\District 7\Projects\74925\DRAWN\CADsheets\0774925-shd-details.dgn		REVISIONS	REVISIONS			328	(10, 11)RS-3	WAYNE	31	9	
Default	PLOT SCALE = 100.0000' / in.	CHECKED -	REVISED -			CONTRACT NO. 74925					
	PLOT DATE = 11/1/2019	DATE -	REVISED -			ILLINOIS FED. AID PROJECT					



SCHEDULE OF EXISTING SECTION CORNERS AND MONUMENTS (W/TIES)

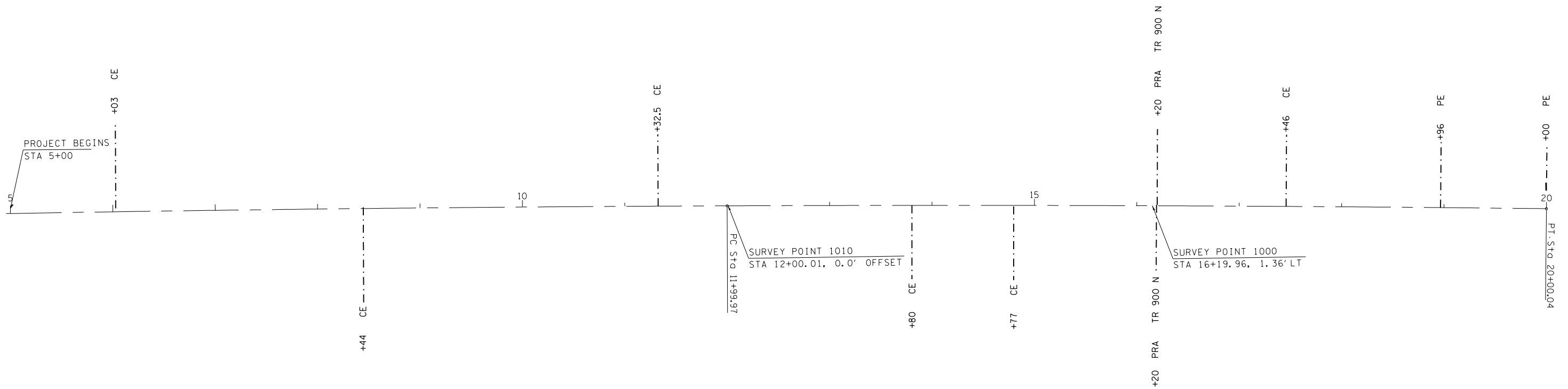
Station	Off-Set	Description	Point	PROPOSED PRESERVATION METHOD
123+10.06	0.00'	12" SPIKE NAIL WITH RIBBON, 4" BELOW SURFACE	1014	RESET IDOT DISK
149+99.95	0.00'	DISK @ CENTERLINE	1006	RESET IDOT DISK
175+90.85	0.00'	DISK @ CENTERLINE	1007	RESET IDOT DISK
175+88.44	0.00'	RAILROAD SPIKE WITH PUNCHMARK @ CENTERLINE	1008	PROTECT & INSTALL SURVEY VAULT

SCHEDULE OF EXISTING SECTION CORNERS AND MONUMENTS (W/O TIES)

Station	Off-Set	Description	TYPE	Point	PROPOSED PRESERVATION METHOD
12+00.01	0.00'	DISK @ CENTERLINE	PC	1010	RESET IDOT DISK
20+00.01	0.00'	DISK @ CENTERLINE	PT	1011	RESET IDOT DISK
22+11.00	0.00'	DISK @ CENTERLINE	PI	1012	RESET IDOT DISK
43+00.00	0.00'	DISK @ CENTERLINE	PI	1013	RESET IDOT DISK
67+00.00	0.00'	DISK @ CENTERLINE	PI	1001	RESET IDOT DISK
87+00.00	0.00'	DISK @ CENTERLINE STAMPED 87+00	PI KINK	1003	RESET IDOT DISK
208+00.00	0.00'	DISK WITH PUNCHMARK @ CENTERLINE	PC	1009	RESET IDOT DISK

NOT TO SCALE

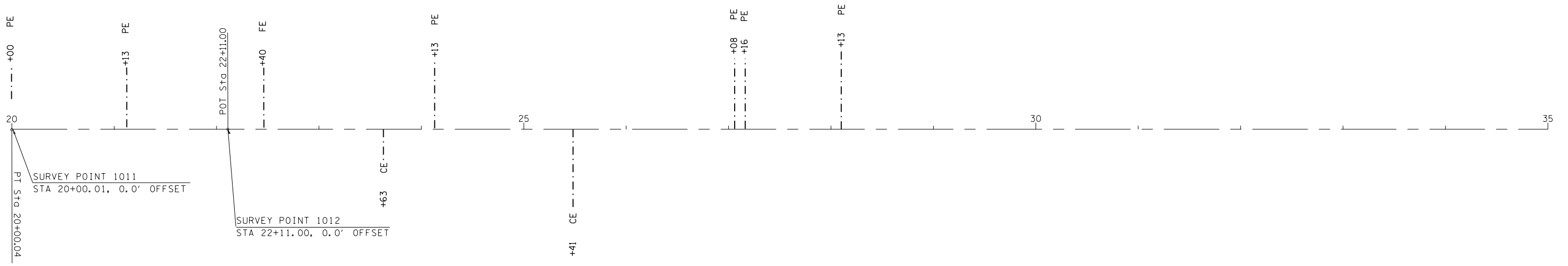
FILE NAME =	USER NAME = steffenk	DESIGNED -	REVISED -	STATE OF ILLINOIS DEPARTMENT OF TRANSPORTATION	SURVEY TIES	F.A.P. R/E.	SECTION	COUNTY	TOTAL SHEETS	SHEET NO.
pw:\planroom.dot.illinois.gov\PIDOT\Documents\IDOT Offices\District 7\Projects\74925\DRAWN\CADsheets\0774925-shr-details.dgn	DESIGNED -	REVISED -	328			(10, 11)RS-3	WAYNE	31	10	
Default	PLOT SCALE = 100.0000' / in.	CHECKED -	REVISED -			CONTRACT NO. 74925				
	PLOT DATE = 11/11/2019	DATE -	REVISED -			ILLINOIS FED. AID PROJECT				



PROTECT AND PRESERVE MONUMENTS

POINT	STATION	OFFSET	TYPE	DESCRIPTION	TIES	PROTECT & PRESERVE FOR PLANS
1010	12+00.01	0.0 FT	PC	DISK @ CENTERLINE	NO	RESET IDOT DISK
1000	16+19.96	LT 1.36 FT	SW CORNER SEC. 35	IP WITH ORANGE CAP IN 2" PIPE @ CR 900N	YES	PROTECT AND INSTALL SURVEY VAULT

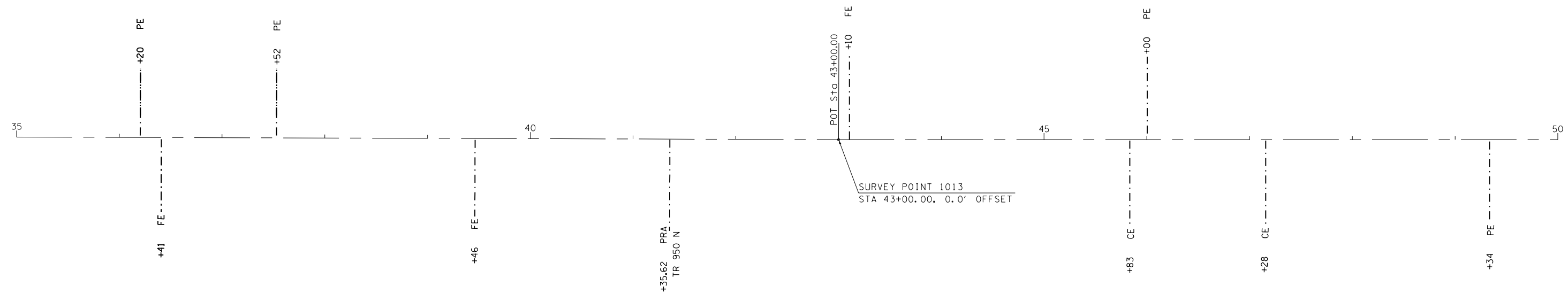
STA. 5+00 TO 20+00



PROTECT AND PRESERVE MONUMENTS

POINT	STATION	OFFSET	TYPE	DESCRIPTION	TIES	PROTECT & PRESERVE FOR PLANS
1011	20+00.01	0.0 FT	PT	DISK @ CENTERLINE	NO	RESET IDOT DISK
1012	22+11.00	0.0 FT	PI	DISK @ CENTERLINE	NO	RESET IDOT DISK

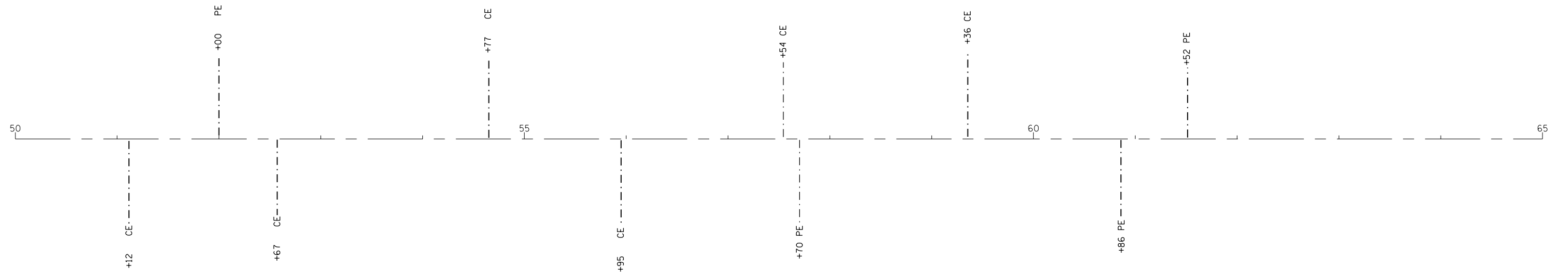
STA. 20+00 TO 35+00



PROTECT AND PRESERVE MONUMENTS

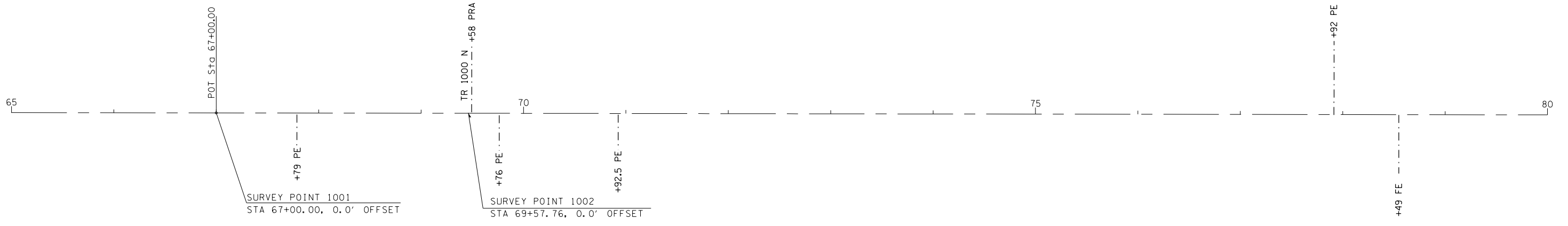
POINT	STATION	OFFSET	TYPE	DESCRIPTION	TIES	PROTECT & PRESERVE FOR PLANS
1013	43+00.00	0.0 FT	PI	DISK @ CENTERLINE	NO	RESET IDOT DISK

STA. 35+00 TO 50+00



STA. 50+00 TO 65+00

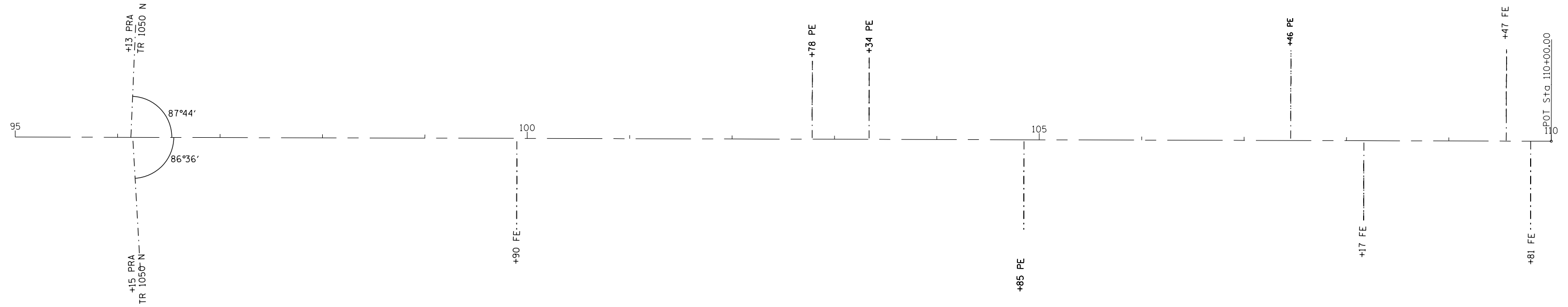
FILE NAME =	USER NAME = steffenmk	DESIGNED -	REVISED -	STATE OF ILLINOIS DEPARTMENT OF TRANSPORTATION	PLAN SHEET			F.A.P. RTE.	SECTION	COUNTY	TOTAL SHEETS	SHEET NO.
p:\planroom.dot.illinois.gov\PIDOT\Documents\IDOT Offices\District 7\Projects\74925\DRAWN\CADsheets\0774925-sht-plan.dgn	DRAWN	REVISED -	REVISED -					328	(10, 11)RS-3	WAYNE	31	14
Default	PLOT SCALE = 100.0000' / in.	CHECKED -	REVISED -		SCALE: SHEET 4 OF 15 SHEETS STA. 50+00 TO STA. 65+00			CONTRACT NO. 74925				
	PLOT DATE = 11/1/2019	DATE -	REVISED -		ILLINOIS FED. AID PROJECT							



PROTECT AND PRESERVE MONUMENTS

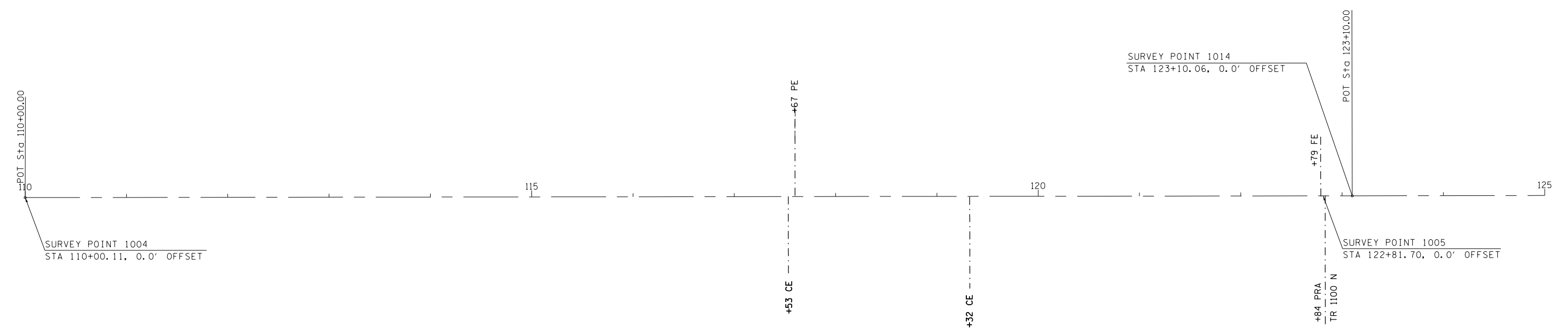
POINT	STATION	OFFSET	TYPE	DESCRIPTION	TIES	PROTECT & PRESERVE FOR PLANS
1001	67+00.00	0.0 FT	PI	DISK @ CENTERLINE	NO	RESET IDOT DISK
1002	69+57.76	0.0 FT	NW CORNER SEC. 35	IP WITH ORANGE CAP @ CENTERLINE IN 2" PIPE @ CR 1000N	YES	PROTECT AND INSTALL SURVEY VAULT

STA. 65+00 TO 80+00



STA. 95+00 TO 110+00

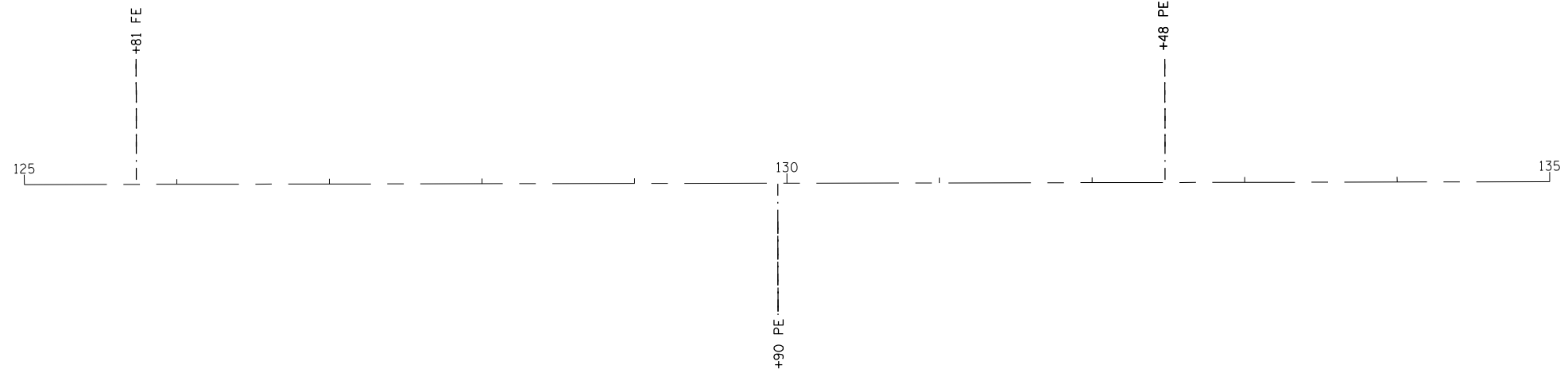
FILE NAME =	USER NAME = steffenmk	DESIGNED -	REVISED -	STATE OF ILLINOIS DEPARTMENT OF TRANSPORTATION	PLAN SHEET			F.A.P. RTE.	SECTION	COUNTY	TOTAL SHEETS	SHEET NO.
p:\planroom.dot.illinois.gov\PIDOT\Documents\IDOT Offices\District 7\Projects\74925\DRAWN\CADsheets\0774925-sht-plan.dgn	DRAWN	REVISED -	REVISED -					328	(10, 11)RS-3	WAYNE	31	17
Default	PLOT SCALE = 100.0000' / in.	CHECKED -	REVISED -		SCALE: SHEET 7 OF 15 SHEETS STA. 95+00 TO STA. 110+00			CONTRACT NO. 74925				
	PLOT DATE = 11/1/2019	DATE -	REVISED -		ILLINOIS FED. AID PROJECT							



PROTECT AND PRESERVE MONUMENTS

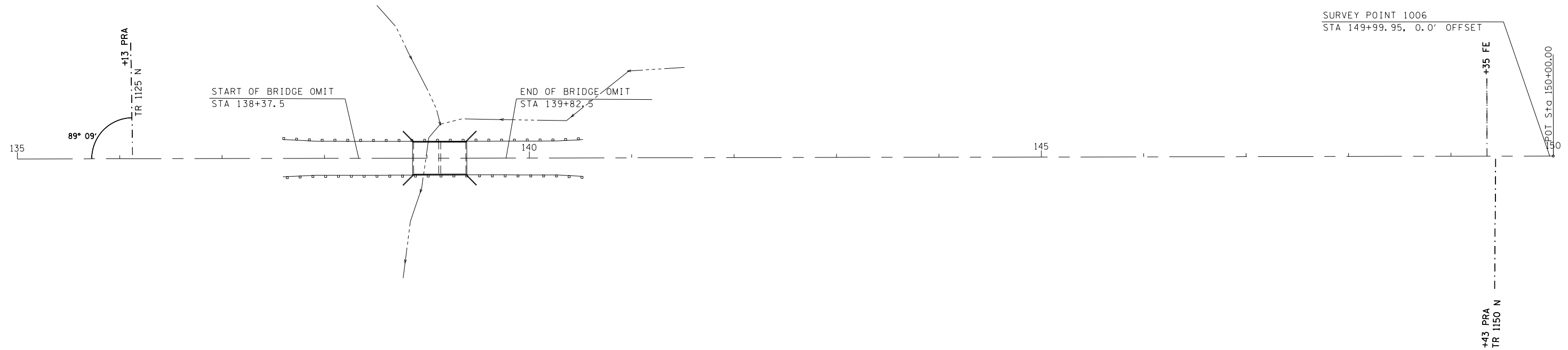
POINT	STATION	OFFSET	TYPE	DESCRIPTION	TIES	PROTECT & PRESERVE FOR PLANS
1004	110+00.11	0.0 FT	PI	DISK @ CENTERLINE	YES	RESET IDOT DISK
1005	122+81.70	0.0 FT	NW CORNER SEC. 26	IP WITH ORANGE CAP @ CENTERLINE IN 2" PIPE @ CR 1100N	YES	PROTECT AND INSTALL SURVEY VAULT
1014	123+10.06	0.0 FT	PI KINK	12" SPIKE NAIL WITH RIBBON, 4" BELOW SURFACE	YES	RESET IDOT DISK

STA. 110+00 TO 125+00



STA. 125+00 TO 135+00

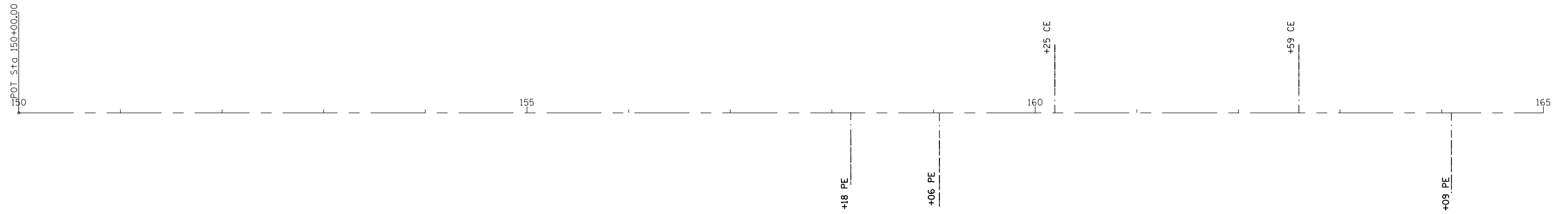
FILE NAME =	USER NAME = steffenmk	DESIGNED -	REVISED -	STATE OF ILLINOIS DEPARTMENT OF TRANSPORTATION	PLAN SHEET	F.A.P. RTE.	SECTION	COUNTY	TOTAL SHEETS	SHEET NO.
p:\planroom.dot.illinois.gov\PIDOT\Documents\IDOT Offices\District 7\Projects\74925\DRAWN\CADsheets\0774925-shr-plan.dgn	DRAWN	REVISION	REVISION			328	(10, 11)RS-3	WAYNE	31	19
Default	PLOT SCALE = 100.0000' / in.	CHECKED -	REVISED -			CONTRACT NO. 74925				
	PLOT DATE = 11/1/2019	DATE -	REVISED -			SCALE:	SHEET 9 OF 15 SHEETS	STA. 125+00 TO STA. 135+00	ILLINOIS FED. AID PROJECT	



PROTECT AND PRESERVE MONUMENTS

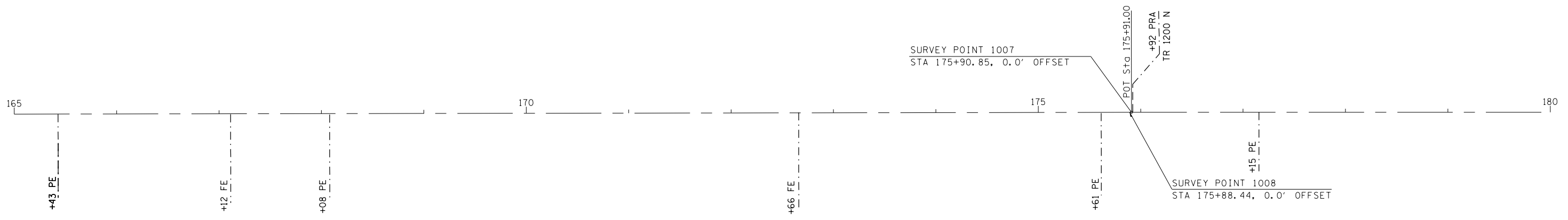
POINT	STATION	OFFSET	TYPE	DESCRIPTION	TIES	PROTECT & PRESERVE FOR PLANS
1006	149+99.95	0.0 FT	PI	DISK @ CENTERLINE	YES	RESET IDOT DISK

STA. 135+00 TO 150+00



STA. 150+00 TO 165+00

FILE NAME =	USER NAME = steffenmk	DESIGNED -	REVISIED -	STATE OF ILLINOIS DEPARTMENT OF TRANSPORTATION	PLAN SHEET	F.A.P. RTE.	SECTION	COUNTY	TOTAL SHEETS	SHEET NO.
pw:\planroom.dot.illinois.gov\PIDOT\Documents\IDOT Offices\District 7\Projects\74925\CAD\DWG\CADsheets\0774925-sht-plan.dgn	DRAWN	REVISIED -	REVISIED -			328	(10, 11)RS-3	WAYNE	31	21
Default	PLOT SCALE = 100.0000' / in.	CHECKED -	REVISIED -			CONTRACT NO. 74925			ILLINOIS FED. AID PROJECT	
	PLOT DATE = 11/1/2019	DATE -	REVISIED -			SCALE:	SHEET 11 OF 15 SHEETS	STA. 150+00 TO STA. 165+00		



PROTECT AND PRESERVE MONUMENTS

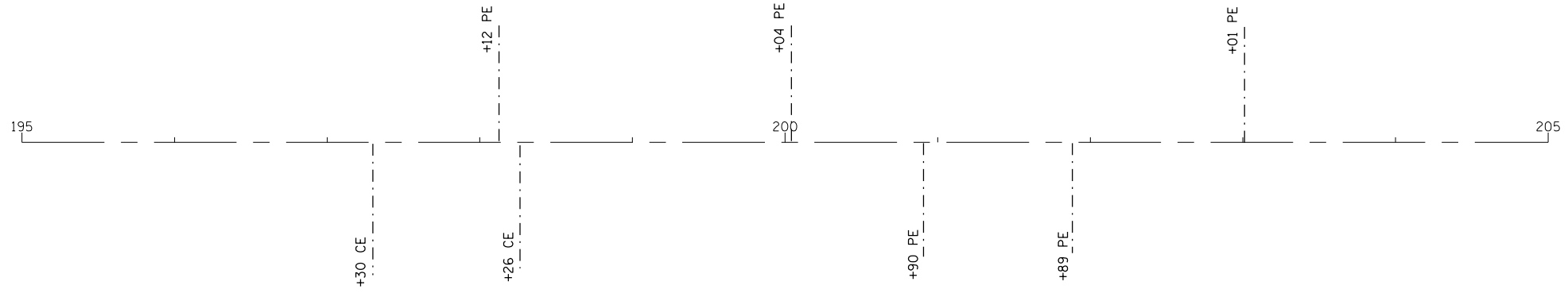
POINT	STATION	OFFSET	TYPE	DESCRIPTION	TIES	PROTECT & PRESERVE FOR PLANS
1007	175+90.85	0.0 FT	PI	DISK @ CENTERLINE	YES	RESET IDOT DISK
1008	175+88.44	0.0 FT	NW CORNER SEC. 23	RAILROAD SPIKE WITH PUNCHMARK @ CENTERLINE	YES	PROTECT AND INSTALL SURVEY VAULT

STA. 165+00 TO 180+00



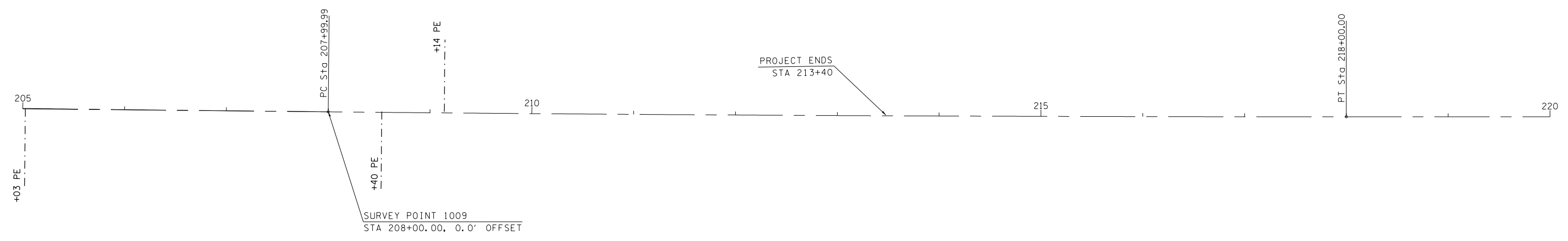
STA. 180+00 TO 195+00

FILE NAME =	USER NAME = steffenmk	DESIGNED -	REVISED -	STATE OF ILLINOIS DEPARTMENT OF TRANSPORTATION	PLAN SHEET	F.A.P. RTE.	SECTION	COUNTY	TOTAL SHEETS	SHEET NO.	
p:\planroom.dot.illinois.gov\PIDOT\Documents\IDOT Offices\District 7\Projects\74925\CAD\DWG\CADsheets\0774925-sht-plan.dgn	Default	Checked	REVISED -			328	(10, 11)RS-3	WAYNE	31	23	
	PLOT SCALE = 100.0000' / in.	CHECKED -	REVISED -			CONTRACT NO. 74925					
	PLOT DATE = 11/1/2019	DATE -	REVISED -			SCALE:	SHEET 13 OF 15 SHEETS	STA. 180+00 TO STA. 195+00	ILLINOIS FED. AID PROJECT		



STA. 195+00 TO 205+00

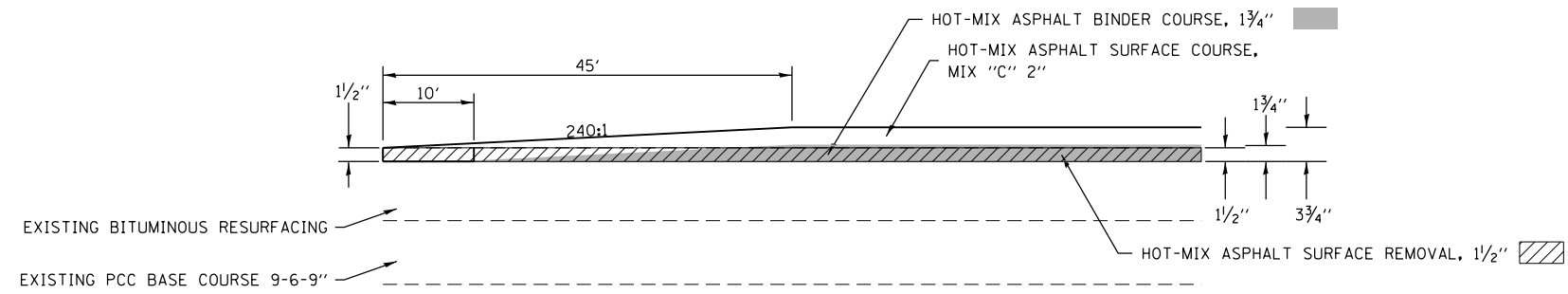
FILE NAME =	USER NAME = steffenmk	DESIGNED -	REVISED -	STATE OF ILLINOIS DEPARTMENT OF TRANSPORTATION	PLAN SHEET	F.A.P. RTE.	SECTION	COUNTY	TOTAL SHEETS	SHEET NO.
p:\planroom.dot.illinois.gov\PIDOT\Documents\IDOT Offices\District 7\Projects\74925\DRAWN\CADsheets\0774925-sht-plan.dgn	DRAWN	REVISED -	REVISED -			328	(10, 11)RS-3	WAYNE	31	24
Default	PLOT SCALE = 100.0000' / in.	CHECKED -	REVISED -			CONTRACT NO. 74925			ILLINOIS FED. AID PROJECT	
	PLOT DATE = 11/1/2019	DATE -	REVISED -			SCALE:	SHEET 14 OF 15 SHEETS	STA. 195+00 TO STA. 205+00		



PROTECT AND PRESERVE MONUMENTS

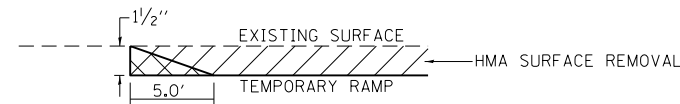
POINT	STATION	OFFSET	TYPE	DESCRIPTION	TIES	PROTECT & PRESERVE FOR PLANS
1009	208+00.00	0.0 FT	PC	DISK WITH PUNCHMARK @ CENTERLINE	NO	RESET IDOT DISK

STA. 205+00 TO 220+00



BUTT JOINT DETAIL

STA 5+00 TO STA 5+45
 STA 137+92.5 TO STA 138+37.5
 STA 139+82.5 TO STA 140+27.5
 STA 212+95 TO STA 213+40



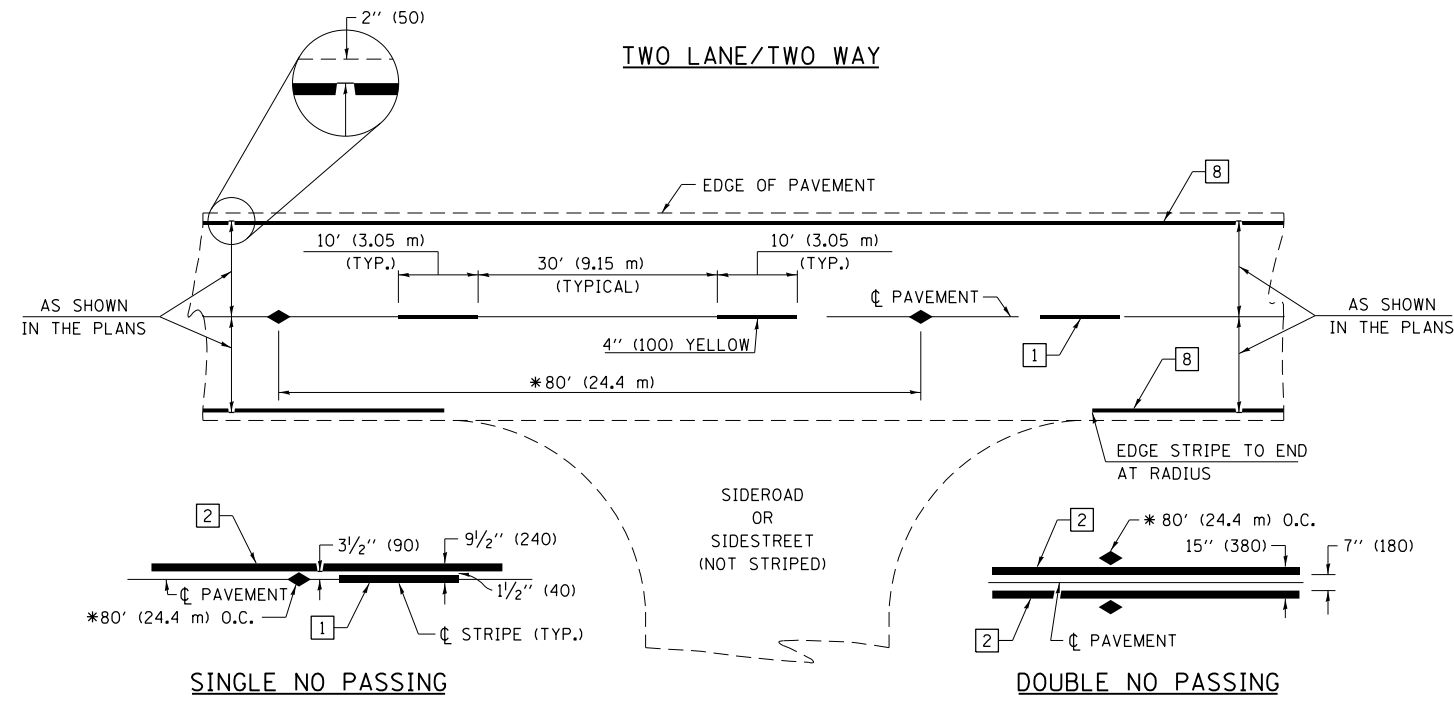
TEMPORARY RAMP

STA 5+00 TO STA 5+05
 STA 138+32.5 TO STA 138+37.5
 STA 139+82.5 TO STA 139+87.5
 STA 213+35 TO STA 213+40

NOT TO SCALE

Note: All dimensions are in INCHES (millimeters) unless otherwise shown.

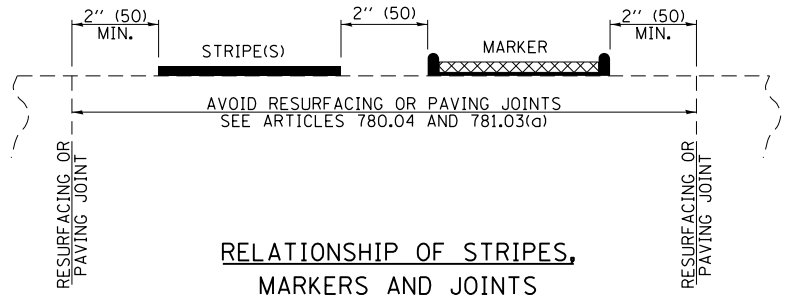
FILE NAME =	USER NAME = steffenmk	DESIGNED -	REVISED -	STATE OF ILLINOIS DEPARTMENT OF TRANSPORTATION	DETAILS			F.A.P. RTE.	SECTION	COUNTY	TOTAL SHEETS	SHEET NO.
pw:\planroom.dot.illinois.gov\PIDOT\Documents\IDOT Offices\District 7\Projects\74925\CAD\DWG\CADsheets\0774925-shd-details.dwg	DRAWN	REVISIONS	REVISIONS					328	(10, 11)RS-3	WAYNE	31	26
Default	PLOT SCALE = 100.0000' / in.	CHECKED -	REVISED -		SCALE: SHEET OF SHEETS STA. TO STA.			CONTRACT NO. 74925				
	PLOT DATE = 11/11/2019	DATE -	REVISED -		ILLINOIS FED. AID PROJECT							



PAVEMENT MARKING LEGEND

- 1 4" (100) SKIP-DASH (YELLOW)
- 2 4" (100) SOLID (YELLOW)
- 3 12" (300) DIAGONAL (YELLOW)
- 4 4" (100) DOUBLE YELLOW (NARROW)
- 5 12" (300) SOLID WHITE
- 6 RESERVED
- 7 6" (150) SKIP-DASH (WHITE)
- 8 4" (100) SOLID (WHITE)
- 9 12" (300) DIAGONAL (WHITE)
- 10 6" (150) SOLID (WHITE)
- 11 24" (600) STOP BAR (WHITE)
- 12 8" (200) SOLID (WHITE)
- 13 4" (100) PARKING WHITE

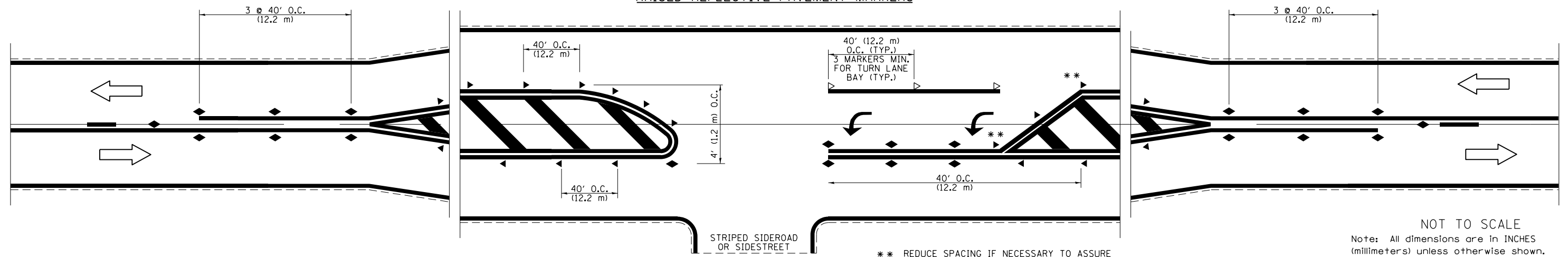
* REDUCE TO 40' (12.2 m) O.C. ON CURVES WITH POSTED OR ADVISORY SPEEDS OF 45 mph (70 km/h) OR LESS.



TYPICAL PAVEMENT MARKERS LEGEND

- ◆ TWO-WAY AMBER MARKER
- ▶ ONE-WAY AMBER MARKER
- ▷ ONE-WAY CRYSTAL MARKER

RAISED REFLECTIVE PAVEMENT MARKERS



** REDUCE SPACING IF NECESSARY TO ASSURE MARKERS AT CORNER POINTS.

NOT TO SCALE
Note: All dimensions are in INCHES (millimeters) unless otherwise shown.

DISTRICT 7 DETAIL NO. 7800001

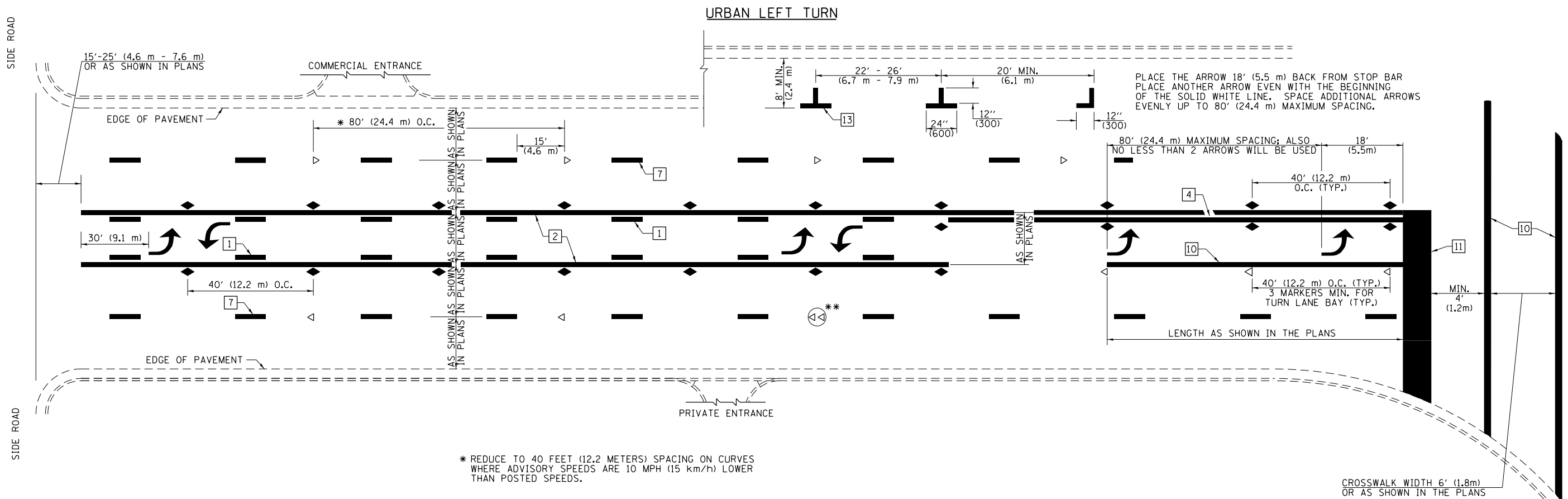
FILE NAME =	USER NAME = steffenmk	DESIGNED -	REVISED -
pw:\planroom.dot.illinois.gov\PWIDOT\Documents\IDOT Offices\District 7\Projects\74925\DRAWN\CADsheets\0774925-shd-details.dgn		REVISOR -	REVISED -
	PLOT SCALE = 100.0000' / in.	CHECKED -	REVISED -
	PLOT DATE = 11/17/2019	DATE -	REVISED -

**STATE OF ILLINOIS
DEPARTMENT OF TRANSPORTATION**

**PAVEMENT MARKING AND RAISED REFLECTIVE PAVEMENT MARKERS
(RURAL & URBAN APPLICATIONS)**

SCALE: SHEET NO. 1 OF 4 SHEETS STA. TO STA.

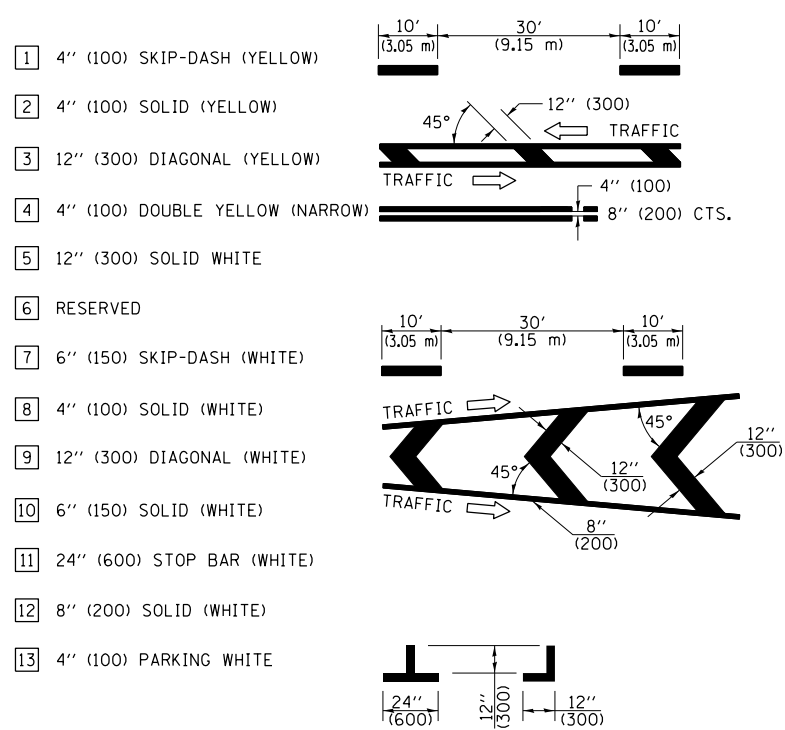
F.A.P. RTE.	SECTION	COUNTY	TOTAL SHEETS	SHEET NO.
328	(10, 11RS-3	WAYNE	31	27
CONTRACT NO. 74925				
ILLINOIS FED. AID PROJECT				



* REDUCE TO 40 FEET (12.2 METERS) SPACING ON CURVES WHERE ADVISORY SPEEDS ARE 10 MPH (15 km/h) LOWER THAN POSTED SPEEDS.

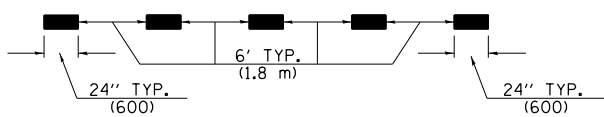
** DOUBLE LANE LINE MARKERS SHALL BE SPECIFIED AND SPACED AS SHOWN IN HIGHWAY STANDARD 781001 FOR MULTI-LANE DIVIDED AND UNDIVIDED HIGHWAYS.

PAVEMENT MARKING LEGEND

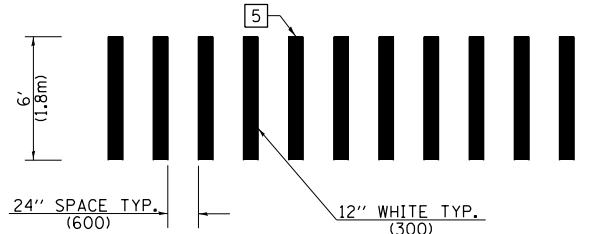


GENERAL NOTES

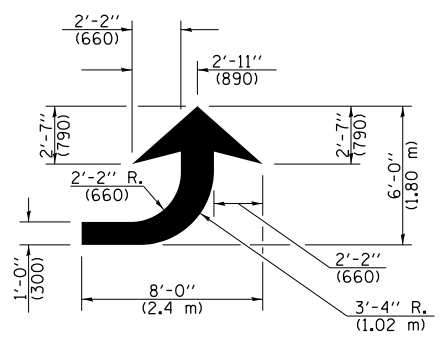
- TURN ARROW PAIRS SHALL BE PLACED AT 250' (75 m) INTERVALS AND SHALL BE EVENLY SPACED BETWEEN BOTH ENDS OF THE BIDIRECTIONAL LEFT TURN LANE. USE A MINIMUM OF TWO PAIRS PER BLOCK.
- THE SOLID YELLOW PAVEMENT MARKINGS [2] SHOULD GENERALLY START OR END NEAR THE RADIUS POINT OF EACH STREET RETURN EXCEPT WHERE ONE OR BOTH ENDS WOULD INCLUDE STOP BARS.
- THE SKIP-DASH PAVEMENT MARKINGS [1] OR [7] SHOULD BE CENTERED BETWEEN BOTH ENDS OF EACH CITY BLOCK AND SHALL BE PLACED SO THEY LINE UP ACROSS FROM EACH OTHER.
- USE LARGE ARROW SIZE FOR BOTH RURAL AND URBAN LOCATIONS. (SEE LAST PAGE OF SECTION 780x FOR SYMBOLS TABLE)
- LANE LINE EXTENSIONS SHALL BE THE SAME COLOR AND WIDTH AS THE LANE LINE BEING EXTENDED.



LANE LINE EXTENSIONS

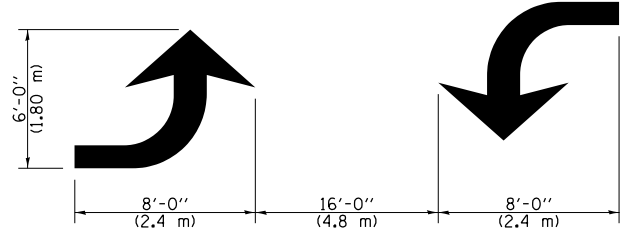


CROSSWALK DETAIL (DECATUR CITY LIMITS ONLY)



LEFT ARROW

REVERSE FOR RIGHT ARROW
AREA = 15.6 SQ. FT. (1.47 m²)
(WHITE)

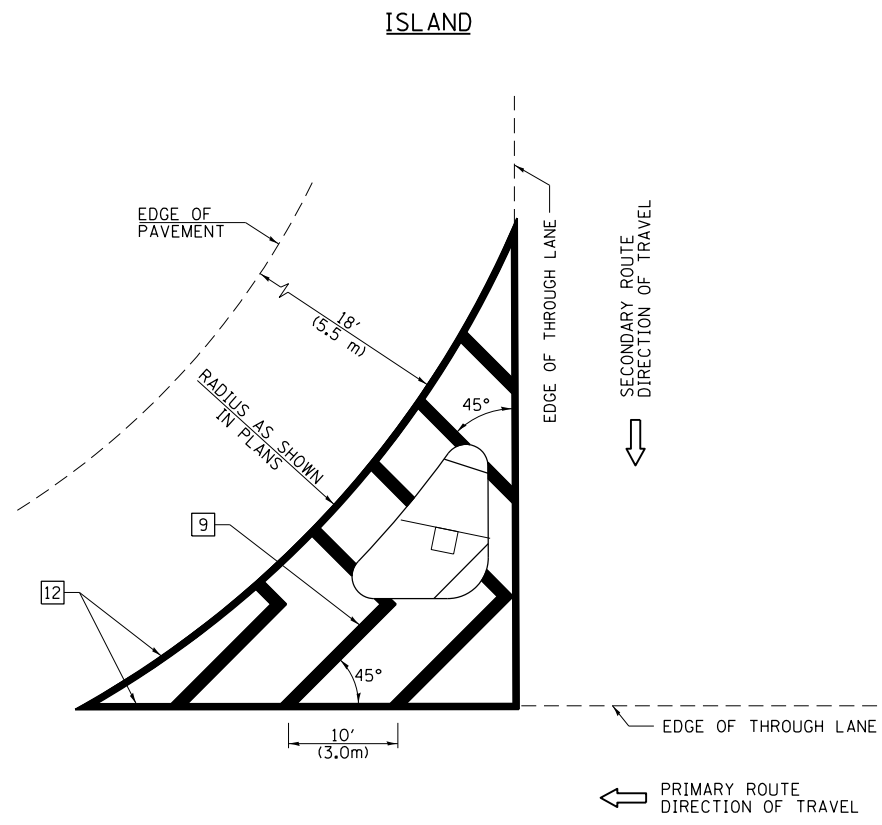


TYPICAL DOUBLE TURN ARROWS (WHITE)

NOT TO SCALE

Note: All dimensions are in INCHES (millimeters) unless otherwise shown.

FILE NAME =	USER NAME = steffenmk	DESIGNED -	REVISED -	STATE OF ILLINOIS DEPARTMENT OF TRANSPORTATION	PAVEMENT MARKING AND RAISED REFLECTIVE PAVEMENT MARKERS (RURAL & URBAN APPLICATIONS)	F.A.P. R.T.E.	SECTION	COUNTY	TOTAL SHEETS	SHEET NO.	
pw:\planroom.dot.illinois.gov\PWIDOT\Documents\IDOT Offices\District 7\Projects\74925\DRAWN\CADsheets\0774925-shd-details.dwg	DRWN	REVISIONS	REVISIONS			328	(10, 11RS-3)	WAYNE	31	28	
	PLOT SCALE = 100.0000' / in.	CHECKED -	REVISIONS			CONTRACT NO. 74925					
	PLOT DATE = 11/1/2019	DATE -	REVISIONS			ILLINOIS FED. AID PROJECT					
SCALE:		SHEET NO. 2 OF 4 SHEETS		STA. TO STA.							

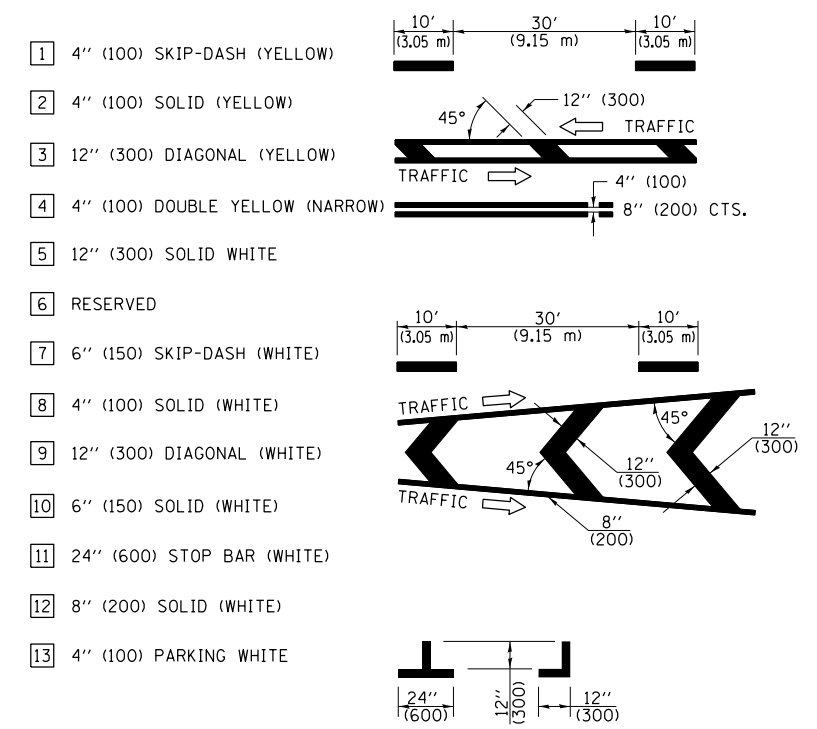


GENERAL NOTES

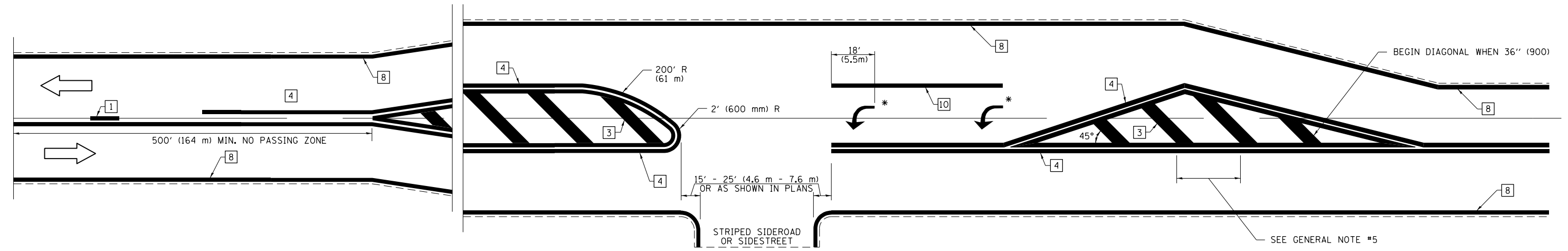
1. RAISED AND CORRUGATED MEDIANS SHALL BE OUTLINED WITH [2] IF PRESENT.
2. SOME OF THE INFORMATION INCLUDED WITH THIS DETAIL MAY NOT BE APPLICABLE TO THIS IMPROVEMENT.
3. PAVEMENT MARKINGS ARE TO BE EXTENDED THROUGH OMISSIONS WHEN APPLICABLE.
4. FINAL PAVEMENT MARKINGS SHALL BE IN PLACE PRIOR TO PLACING ANY RAISED REFLECTIVE PAVEMENT MARKERS.
5. THE FOLLOWING CRITERIA SHALL BE USED FOR SELECTING THE DIAGONAL PAVEMENT MARKING SPACING:

< 30 MPH (< 50 km/h)	15' (4.5 m)
30-45 MPH (50-75 km/h)	20' (6.0 m)
> 45 MPH (> 75 km/h)	30' (9.0 m)

PAVEMENT MARKING LEGEND



RURAL LEFT TURN STRIPING



* PLACE AN ARROW 18' (5.5 m) BACK FROM STOP BAR. PLACE ANOTHER ARROW EVEN WITH THE BEGINNING OF THE SOLID WHITE LINE. SPACE ADDITIONAL ARROWS EVENLY UP TO 80' (24.4 m) MAXIMUM SPACING. USE MINIMUM OF 2 ARROWS.

NOT TO SCALE
 Note: All dimensions are in INCHES (millimeters) unless otherwise shown.

DISTRICT 7 DETAIL NO. 7800001

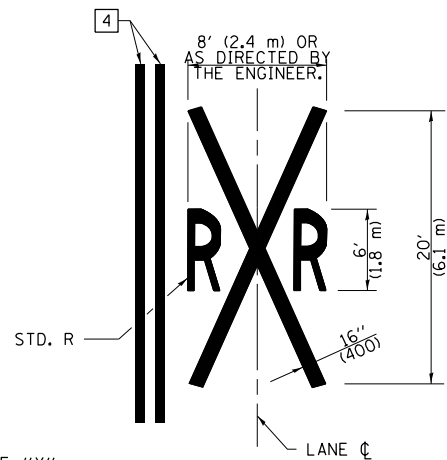
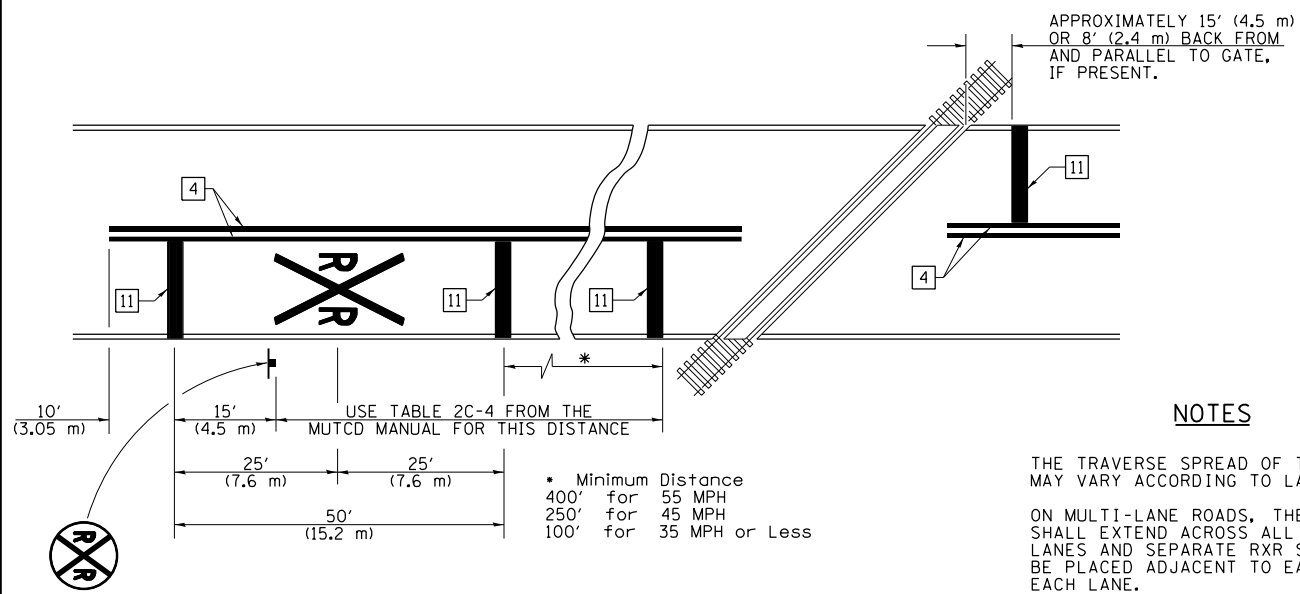
FILE NAME =	USER NAME = steffenmk	DESIGNED -	REVISED -
pw:\planroom.dot.illinois.gov\PIDOT\Documents\IDOT Offices\District 7\Projects\74925\DRAWN\CADsheets\0774925-shd-details.dgn		REVISOR -	REVISOR -
	PLOT SCALE = 100.0000' / in.	CHECKED -	REVISOR -
	PLOT DATE = 11/17/2019	DATE -	REVISOR -

**STATE OF ILLINOIS
 DEPARTMENT OF TRANSPORTATION**

**PAVEMENT MARKING AND RAISED REFLECTIVE PAVEMENT MARKERS
 (RURAL & URBAN APPLICATIONS)**
 SCALE: SHEET NO. 3 OF 4 SHEETS STA. TO STA.

F.A.P. RTE.	SECTION	COUNTY	TOTAL SHEETS	SHEET NO.
328	(10, 11)RS-3	WAYNE	31	29
CONTRACT NO. 74925				
ILLINOIS FED. AID PROJECT				

PAVEMENT MARKINGS AT RAILROAD-HIGHWAY GRADE CROSSING



NOTES

THE TRAVERSE SPREAD OF THE "X" MAY VARY ACCORDING TO LANE WIDTH.

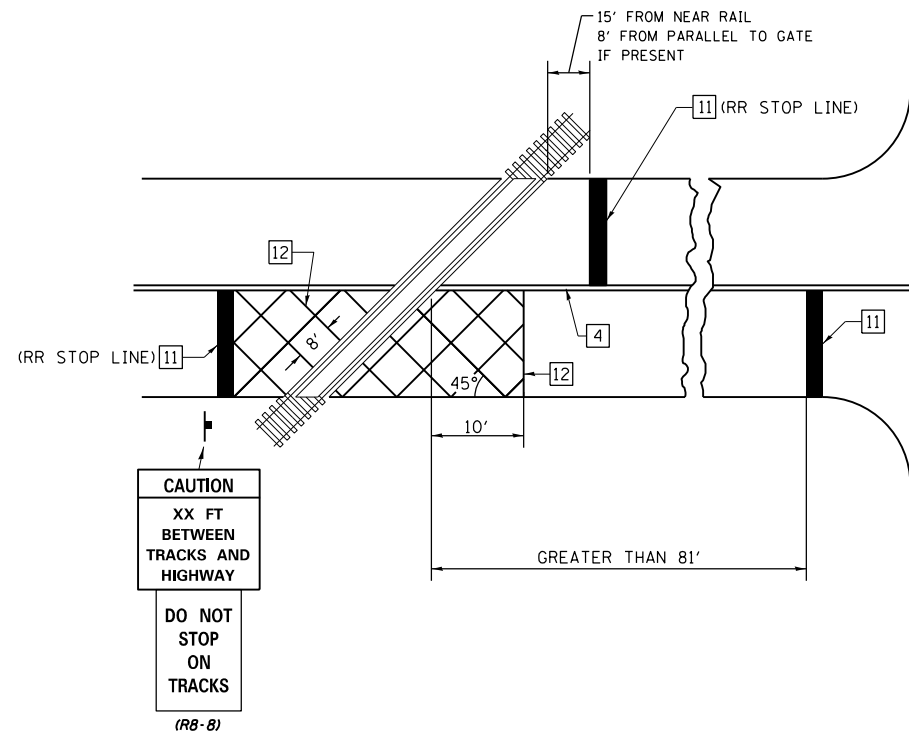
ON MULTI-LANE ROADS, THE STOP LINES SHALL EXTEND ACROSS ALL APPROACH LANES AND SEPARATE RXR SYMBOLS SHALL BE PLACED ADJACENT TO EACH OTHER IN EACH LANE.

WHEN THE PAVEMENT MARKING SYMBOL IS USED, A PORTION OF THE SYMBOL SHOULD BE LOCATED DIRECTLY ADJACENT TO THE ADVANCE WARNING SIGN (W10-1) AS PLACED BY TABLE II-1, CONDITION B OF THE MUTCD.

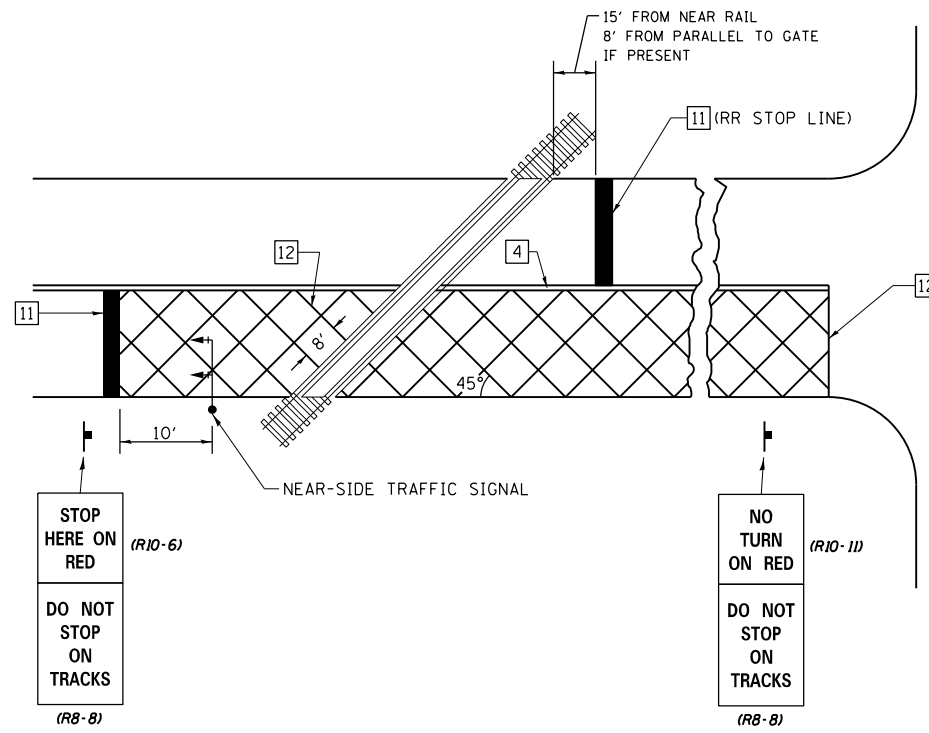
PAVEMENT MARKING LEGEND

- 1 4" (100) SKIP-DASH (YELLOW)
 - 2 4" (100) SOLID (YELLOW)
 - 3 12" (300) DIAGONAL (YELLOW)
 - 4 4" (100) DOUBLE YELLOW (NARROW)
 - 5 12" (300) SOLID WHITE
 - 6 RESERVED
 - 7 6" (150) SKIP-DASH (WHITE)
 - 8 4" (100) SOLID (WHITE)
 - 9 12" (300) DIAGONAL (WHITE)
 - 10 6" (150) SOLID (WHITE)
 - 11 24" (600) STOP BAR (WHITE)
 - 12 8" (200) SOLID (WHITE)
 - 13 4" (100) PARKING WHITE
-

RAILROAD CROSSING WITH INTERCONNECT ONLY



RAILROAD CROSSING WITH INTERCONNECT AND PRE-SIGNALS



GENERAL NOTES

1. SUPPLEMENTAL PAVEMENT MARKINGS TO BE INSTALLED ONLY ON APPROACHES TO INTERSECTIONS CONTROLLED BY TRAFFIC SIGNALS WHICH ARE INTERCONNECTED WITH THE RAILROAD WARNING SIGNALS.
2. EXTEND PAVEMENT MARKINGS TO THE INTERSECTION ONLY WHERE NEAR-SIDE TRAFFIC SIGNALS ARE USED.

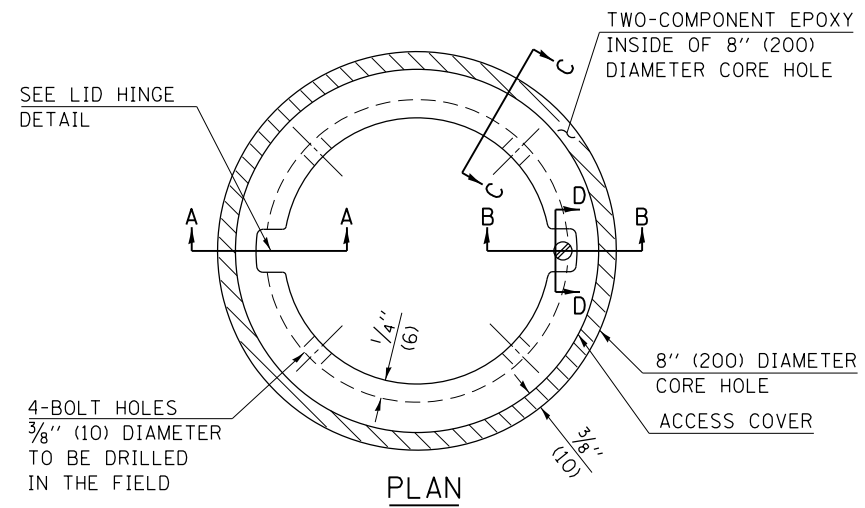
SUPPLEMENTAL PAVEMENT MARKING TREATMENT FOR RAILROAD-HIGHWAY GRADE CROSSING

NOT TO SCALE

Note: All dimensions are in INCHES (millimeters) unless otherwise shown.

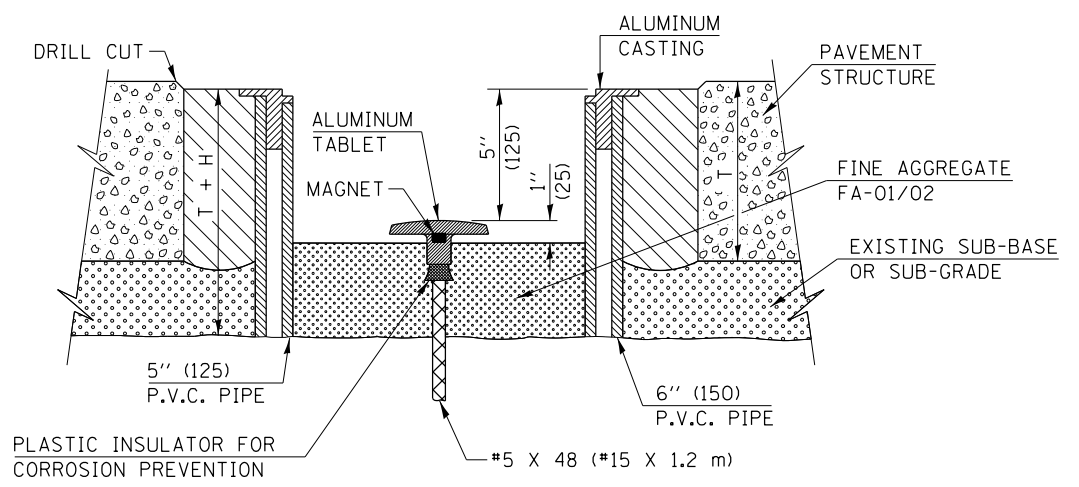
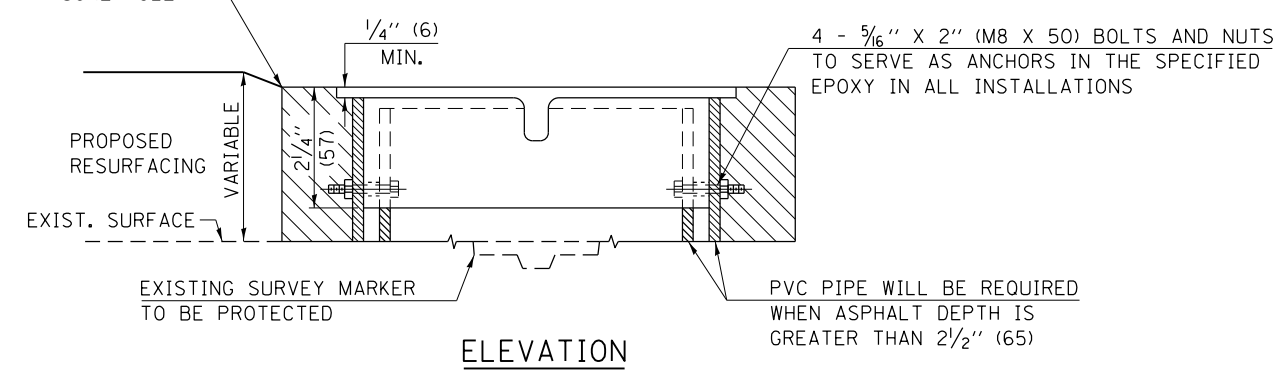
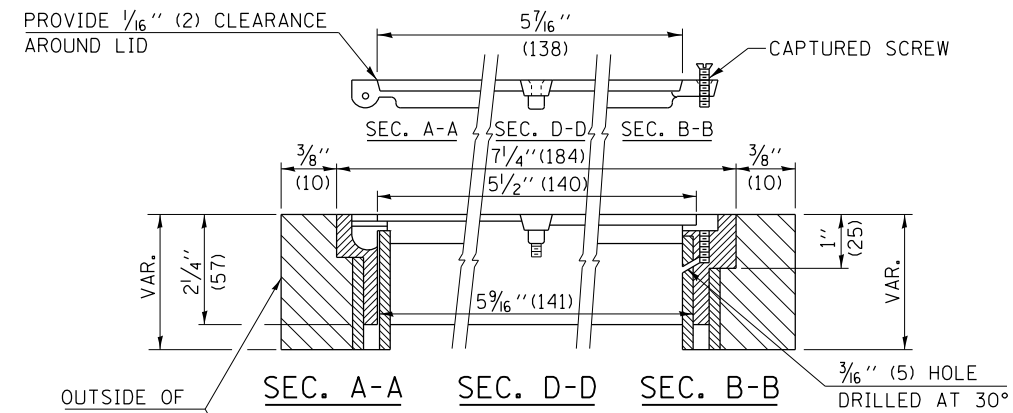
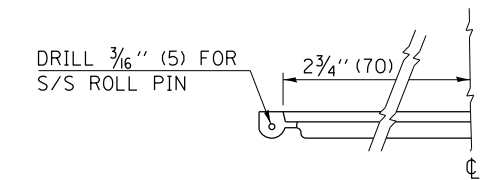
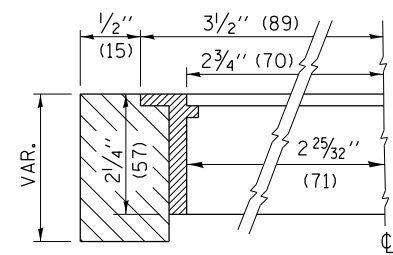
DISTRICT 7 DETAIL NO. 7800001

FILE NAME =	USER NAME = steffenk	DESIGNED -	REVISED -	STATE OF ILLINOIS DEPARTMENT OF TRANSPORTATION	PAVEMENT MARKING AND RAISED REFLECTIVE PAVEMENT MARKERS (RURAL & URBAN APPLICATIONS)	F.A.P. R.T.E.	SECTION	COUNTY	TOTAL SHEETS	SHEET NO.	
pw:\planroom.dot.illinois.gov\PIWIDOT\Documents\IDOT Offices\District 7\Projects\74925\DRAWN\CADsheets\0774925-sht-details.dgn		REVISIONS	REVISIONS			328	(10, 11)RS-3	WAYNE	31	30	
		CHECKED -	REVISIONS			CONTRACT NO. 74925					
		DATE -	REVISIONS			ILLINOIS FED. AID PROJECT					
				SCALE:	SHEET NO. 4 OF 4 SHEETS	STA.	TO STA.				



- LEGEND**
- ALUMINUM CASTING
 - 5" (125) OR 6" (150) P.V.C. PIPE
 - TWO-COMPONENT EPOXY
- T = THICKNESS OF PAVEMENT STRUCTURE
- H = THE THICKNESS OF THE SUB-BASE GRANULAR + 1" (25)

BILL OF MATERIAL	
ALUMINUM CASTING OF THE DIMENSIONS AND SPECIFICATIONS SHOWN OR OTHER SUBJECT TO ENGINEER'S APPROVAL OF SHOP DRAWINGS,	
4 EACH - 5/16" X 2" (M8 X 50) BOLTS WITH NUTS, EPOXY,	
5" OR 6" (125 mm OR 150 mm) DIAMETER P.V.C. PIPE, SCHEDULE 40 (WHEN REQUIRED).	



EXISTING SURVEY MARKER

PROPOSED SURVEY MARKER

NOT TO SCALE

Note: All dimensions are in INCHES (millimeters) unless otherwise shown.

DISTRICT 7 DETAIL NO. Z0070202

FILE NAME =	USER NAME = steffennk	DESIGNED -	REVISED - MAD 6-11
pw:\planroom.dot.illinois.gov\PIDOT\Documents\IDOT Offices\District 7\Projects\74925\DRAWN\CADsheets\0774925-sht-details.dgn		CHECKED -	REVISED -
		DATE -	REVISED -

STATE OF ILLINOIS
DEPARTMENT OF TRANSPORTATION

SURVEY MARKER VAULT

SCALE:	SHEET NO.	OF SHEETS	STA.	TO STA.
--------	-----------	-----------	------	---------

F.A.P. RTE.	SECTION	COUNTY	TOTAL SHEETS	SHEET NO.
328	(10, 11)RS-3	WAYNE	31	31
FED. ROAD DIST. NO. ILLINOIS FED. AID PROJECT			CONTRACT NO. 74925	