

INDEX OF SHEETS

- 1. COVER SHEET
- 2. GENERAL NOTES
- 3-6. SUMMARY OF QUANTITIES
- 7-8. TYPICAL SECTIONS
- 9-13. SCHEDULE OF QUANTITIES
- 14. PLAN SHEET
- 15-18. DETAILS
- 19. EROSION CONTROL SHEET
- 20-21. SURVEY MONUMENTS

HIGHWAY STANDARDS

- 000001-07 STANDARD SYMBOLS, ABBREVIATIONS AND PATTERNS
- 442201-03 CLASS C & D PATCHES
- 606301-04 PC CONCRETE ISLANDS AND MEDIANS
- 642006 SHOULDER RUMBLE STRIPS, 8 In.
- 667101-02 PERMANENT SURVEY MARKERS
- 701001-02 OFF-RD OPERATIONS, 2L, 2W, MORE THAN 15' (4.5m) AWAY
- 701006-05 OFF-RD OPERATIONS, 2L, 2W, 15' (4.5m) TO 24" (600 mm) FROM PAVEMENT EDGE
- 701011-04 OFF-RD MOVING OPERATIONS, 2L, 2W, DAY ONLY
- 701201-05 LANE CLOSURE, 2L, 2W, DAY ONLY, FOR SPEEDS ≥ 45 MPH
- 701301-04 LANE CLOSURE, 2L, 2W, SHORT TIME OPERATIONS
- 701306-04 LANE CLOSURE, 2L, 2W, SLOW MOVING OPERATIONS DAY ONLY, FOR SPEEDS ≥ 45 MPH
- 701311-03 LANE CLOSURE 2L, 2W MOVING OPERATIONS DAY ONLY
- 701326-04 LANE CLOSURE, 2L, 2W, PAVEMENT WIDENING, FOR SPEEDS ≥ 45 MPH
- 701336-07 LANE CLOSURE, 2L, 2W, WORK AREAS IN SERIES FOR SPEEDS ≥ 45 MPH
- 701901-08 TRAFFIC CONTROL DEVICES
- 780001-05 TYPICAL PAVEMENT MARKINGS
- 781001-04 TYPICAL APPLICATIONS RAISED REFLECTIVE PAVEMNT MARKERS
- 782001-01 CURB REFLECTORS

STATE OF ILLINOIS
DEPARTMENT OF TRANSPORTATION
DIVISION OF HIGHWAYS
PROPOSED
HIGHWAY PLANS

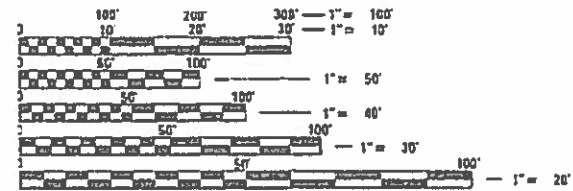
FAS ROUTE 1833 (IL 153)
SECTION (106, 107) RS-2
PROJECT STP-821G(050)
HMA OVERLAY
RANDOLPH AND WASHINGTON COUNTIES

C-98-205-18

F.A.S. RTE.	SECTION	COUNTY	TOTAL SHEETS	SHEET NO.
1833	(106, 107) RS-2	RANDOLPH / WASHINGTON	21	1
ILLINOIS			CONTRACT NO. 76K37	



FUNCTIONAL CLASSIFICATION:	MAJOR COLLECTOR
2015 ADT:	1450
2015 ADDT:	280
2035 ADT:	X
2035 ADDT:	X
ADP%	5.5%
CU%	8.3%



FULL SIZE PLANS HAVE BEEN PREPARED USING STANDARD ENGINEERING SCALES. REDUCED SIZED PLANS WILL NOT CONFORM TO STANDARD SCALES. IN MAKING MEASUREMENTS ON REDUCED PLANS, THE ABOVE SCALES MAY BE USED.

J.U.L.I.E.
 JOINT UTILITY LOCATION INFORMATION FOR EXCAVATION
 1-800-892-0123
 OR 811

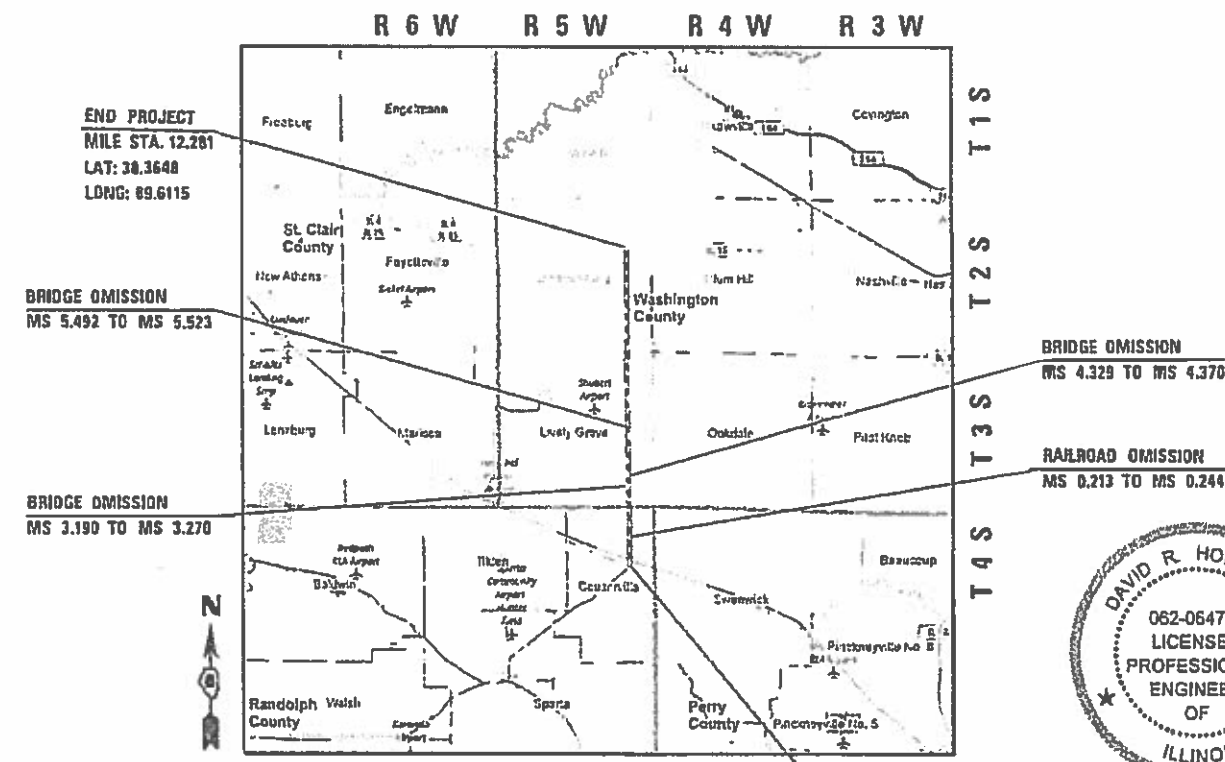
PROJECT ENGINEER:
TIM PADGETT, (618) 346-3325

PROJECT MANAGER
PHIL FREIMUTH, (618) 346-3194

CONTRACT NO. 76K37



VOLKERT, INC.
 1508 EASTPORT PLAZA DRIVE
 COLLINGSVILLE, IL 62232
 Phone: 618-345-8818 Fax: 618-345-9018
 Design Firm Registration Number 194-004027-0014



DAVID R. HOLLOWAY, P.E.
 LICENSED PROFESSIONAL ENGINEER
 ILLINOIS NO. 062-064771
 EXPIRES: 11-30-2021

STATE OF ILLINOIS
 DEPARTMENT OF TRANSPORTATION

SUBMITTED Jan 13 2020
Kath. K. K. K. REGIONAL ENGINEER

Jan 31 2020
A. E. K. ENGINEER OF DESIGN AND ENVIRONMENT

Jan 31 2020
James J. J. DIRECTOR OF HIGHWAYS PROJECT IMPLEMENTATION 13

PRINTED BY THE AUTHORITY
OF THE STATE OF ILLINOIS

GENERAL NOTES

- IF THE SURFACE REMOVAL ON THIS PROJECT PRODUCES A MILLED EDGE NEAR CENTERLINE GREATER THAN 1.5 INCHES BETWEEN ADJACENT OPEN LANES OF TRAFFIC, ONE OF THE FOLLOWING SHALL APPLY:
 - THE CONTRACTOR SHALL ORGANIZE THE WORK TO AVOID THE MILLED EDGE.
 - THE CONTRACTOR SHALL CONSTRUCT A TEMPORARY HOT MIX ASPHALT WEDGE ALONG THE MILLED EDGE.
 - THE CONTRACTOR SHALL CONSTRUCT A MILLED SLOPED EDGE (MINIMUM 1:3) ALONG THE MILLED EDGE.
 THE COST OF THIS WORK SHALL BE INCLUDED IN THE COST PER SQUARE YARD FOR HOT-MIX ASPHALT SURFACE REMOVAL OF THE DEPTH SPECIFIED.
- THE NOMINAL THICKNESS FOR THE BINDER AND SURFACE COURSE IS SHOWN ON THE TYPICAL SECTIONS, STANDARDS, SCHEDULES OR SPECIAL DETAILS. THE CONSTRUCTED THICKNESS OF THE ABOVE ITEMS SHALL NOT BE LESS THAN 90 PERCENT OF THE NOMINAL THICKNESS AT ANY LOCATION.
- AGENCIES KNOWN TO HAVE FACILITIES WITHIN THE PROJECT AREA ARE AS FOLLOWS:

	ABOVE GROUND	BELOW GROUND
*AMEREN ILLINOIS, GAS AND ELECTRIC	X	X
*AT&T CORPORATION, COMMUNICATIONS	X	X
*CLEARWAVE COMMUNICATIONS	X	X
*VILLAGE OF COULTERVILLE, WATER & SEWER	X	X
*COUNTRYMARK COOPERATIVE, PIPELINE	X	X
*EGYPTIAN TELEPHONE COOP. ASSN., COMMUNICATIONS	X	X
*FRONTIER COMM., COMMUNICATIONS	X	X
*VERIZON BUSINESS, COMMUNICATIONS	X	X
*MEDIACOM LLC CENTRAL, CABLE TV	X	X
*TRI-COUNTY ELECTRIC COOP., ELECTRIC	X	X
*WASHINGTON COUNTY WATER, WATER	X	X
*ZAYO GROUP, COMMUNICATIONS	X	X

MEMBERS OF J.U.L.I.E. (800)-892-0123 ARE INDICATED BY *. NON J.U.L.I.E. MEMBERS MUST BE NOTIFIED INDIVIDUALLY.
- THE CONTRACTOR AND ENGINEER SHALL BE AWARE THAT NO SURVEY WAS PERFORMED FOR THIS PROJECT. THE STATIONING AND TOPO SHOWN IN THE PLANS WAS CREATED USING RECORD PLANS AND FIELD MEASUREMENTS MADE BY DESIGN PERSONNEL. BOTH SHALL BE ASSUMED TO BE APPROXIMATE.
- SHORT TERM PAVEMENT MARKING SHALL BE APPLIED TO THE MILLED, PRIMED AND FINAL HMA SURFACE. A QUANTITY FOR TEMPORARY PAVEMENT MARKING EQUAL TO THE AMOUNT OF PERMANENT PAVEMENT MARKING HAS BEEN ADDED TO THE PLANS. ALL TEMPORARY PAVEMENT MARKINGS WILL BE PLACED IN SUCH A MANNER SO AS NOT TO INTERFERE WITH THE PLACEMENT OF PERMANENT PAVEMENT MARKINGS. PAVEMENT MARKING REMOVAL SHALL ONLY BE PAID FOR ON THE FINAL LIFT OF SHORT-TERM PAVEMENT MARKING.
- THE PAVEMENT MARKING SHOWN ON THE PLAN IS APPROXIMATE. THE LOCATION OF THE PROPOSED PAVEMENT MARKINGS SHALL MATCH EXISTING FIELD CONDITIONS.
- THE CONTRACTOR SHALL USE FULL LANE WIDTH MILL (12 FT. WIDE) DURING HMA SURFACE REMOVAL.
- ALL PATCHING ON THIS PROJECT SHALL BE COMPLETED PRIOR TO BITUMINOUS SURFACE REMOVAL.
- THE CONTRACTOR SHALL VERIFY ALL DIMENSIONS AND CONDITIONS IN THE FIELD PRIOR TO CONSTRUCTION AND ORDERING OF MATERIALS.
- THE MATERIAL TRANSFER DEVICE CAN CROSS IN AN UNLOADED CONDITION ON SN 095-0032, SN 095-0033, SN 095-0069, SN 095-002410, SN 095-002411, SN 095-002412 AND SN 095-002413. THE MATERIAL TRANSFER DEVICE CANNOT CROSS OVER SN 079-2448.

TRAFFIC CONTROL

- NO OVERNIGHT LANE CLOSURES WILL BE ALLOWED.
- ALL EXCAVATION ADJACENT TO THE EDGE OF PAVEMENT SHALL BE PROTECTED WITH EXTENDED LEG BARRICADES AND APPROPRIATE LIGHT.
- "ROAD CONSTRUCTION" SIGNS SHALL BE PLACED AT THE BEGINNING AND END OF THE PROJECT PLUS THE INTERSECTING SIDE ROADS, AND WILL BE INCLUDED IN THE TRAFFIC CONTROL PAY ITEMS. ALL CONSTRUCTION SIGNS SHALL BE (48"x48") FLUORESCENT ORANGE.
- FLAGMEN SHALL BE PRESENT DURING ALL LANE CLOSURE HOURS, INCLUDING LUNCH HOUR AND NO ADDITIONAL COMPENSATION SHALL BE APPLIED.

COMMITMENTS

NONE

ROUTE	FAS 1833 (IL 153)
SECTION	(106, 107) RS-2
COUNTY	WASHINGTON/RANDOLPH
CONTRACT	76K37

DESCRIPTION	3P RESURFACING ON IL 153 FROM IL 15 TO IL 13 IN COULTERVILLE
-------------	--

ADT (CONSTRUCTION TR):	1500
MU %	5.5
SU %	8.3
20 YR. ESAL'S	0.62

MIXTURE USE:	SURFACE COURSE	LEVELING BINDER	PATCHING
AC/PG	PG 64-22	PG 64-22	PG 64-22
RAP % (MAX)	SEE SPEC.	SEE SPEC.	SEE SPEC.
DESIGN A.V. VOIDS	4.0% @ N ₁₀₀ = 70	4.0% @ N ₁₀₀ = 70	4.0% @ N ₁₀₀ = 70
MIXTURE COMPOSITION (GRADATION)	IL 9.5	IL 9.5 FG	IL 19.0
FRICTION AGGREGATE	MIXTURE "C"	MIXTURE "C"	MIXTURE "B"
QUALITY MANAGEMENT PROGRAM	QCP	QCP	QC/QA

MIXTURE USE:	SHOULDERS (LOWER)	SHOULDERS (SURFACE)
AC/PG	PG 64-22	PG 64-22
RAP % (MAX)	SEE SPEC.	SEE SPEC.
DESIGN AIR VOIDS	4.0% @ N ₁₀₀ = 30	4.0% @ N ₁₀₀ = 30
MIXTURE COMPOSITION (GRADATION)	IL 19.0L	IL 9.5L
FRICTION AGGREGATE		
QUALITY MANAGEMENT PROGRAM	QC/QA	QC/QA

RATES OF APPLICATION

BITUMINOUS CONCRETE:	
SURFACE, BINDER, LEVEL BINDER	112 LBS/SQ YD/INCH
BITUMINOUS MATERIALS (TACK COAT):	
MILLED HMA, AGED NON-MILLED HMA, MILLED CONCRETE, NON-MILLED CONCRETE AND TINED CONCRETE	0.05 LBS/SQ FT
HMA LIFTS, IL-4.75 AND BRICK	0.025 LBS/SQ FT

SUMMARY OF QUANTITIES

CODE NO.	ITEM	UNIT	TOTAL QUANTITY	CONSTRUCTION CODE	
				RANDOLPH COUNTY 80 FEDERAL / 20 STATE	WASHINGTON COUNTY 80 FEDERAL / 20 STATE
				RESURFACING	RESURFACING
				0005 RURAL	0005 RURAL
48102100	AGGREGATE WEDGE SHOULDER, TYPE B	TON	4,781	956	3,825
48203029	HOT-MIX ASPHALT SHOULDERS, 8"	SQ YD	40,943	7,437	33,506
48203100	HOT-MIX ASPHALT SHOULDERS	TON	519	87	432
60618300	CONCRETE MEDIAN SURFACE, 4 INCH	SQ FT	4,300	0	4,300
64200108	SHOULDER RUMBLE STRIPS, 8 INCH	FOOT	127,456	23,080	104,376
67000400	ENGINEER'S FIELD OFFICE, TYPE A	CAL MO	12	2	10
67100100	MOBILIZATION	LSUM	1	0.2	0.8
70100450	TRAFFIC CONTROL AND PROTECTION, STANDARD 701201	LSUM	1	0.2	0.8
70100455	TRAFFIC CONTROL AND PROTECTION, STANDARD 701206	LSUM	1	0.2	0.8
70100460	TRAFFIC CONTROL AND PROTECTION, STANDARD 701306	LSUM	1	0.2	0.8
70100500	TRAFFIC CONTROL AND PROTECTION, STANDARD 701326	LSUM	1	0.2	0.8
70100600	TRAFFIC CONTROL AND PROTECTION, STANDARD 701336	LSUM	1	0.2	0.8
70103815	TRAFFIC CONTROL SURVEILLANCE	CAL DA	31	6	25
70300100	SHORT TERM PAVEMENT MARKING	FOOT	19,692	3,741	15,951

SUMMARY OF QUANTITIES

CONSTRUCTION CODE

RANDOLPH COUNTY 80 FEDERAL / 20 STATE	WASHINGTON COUNTY 80 FEDERAL / 20 STATE
RESURFACING 0005 RURAL	RESURFACING 0005 RURAL

CODE NO.	ITEM	UNIT	TOTAL QUANTITY	RESURFACING 0005 RURAL	RESURFACING 0005 RURAL
70300150	SHORT TERM PAVEMENT MARKING REMOVAL	SQ FT	6,564	1,247	5,317
70300210	TEMPORARY PAVEMENT MARKING LETTERS AND SYMBOLS	SQ FT	14	14	
70300220	TEMPORARY PAVEMENT MARKING - LINE 4"	FOOT	167,761	31,471	136,290
70300260	TEMPORARY PAVEMENT MARKING - LINE 12"	FOOT	217	77	140
70300270	TEMPORARY PAVEMENT MARKING - LINE 16"	FOOT	88	88	0
70300280	TEMPORARY PAVEMENT MARKING - LINE 24"	FOOT	126	52	74
* 78000100	THERMOPLASTIC PAVEMENT MARKING - LETTERS AND SYMBOLS	SQ FT	14	14	0
* 78000200	THERMOPLASTIC PAVEMENT MARKING - LINE 4"	FOOT	167,761	31,471	136,290
* 78000600	THERMOPLASTIC PAVEMENT MARKING - LINE 12"	FOOT	217	77	140
* 78000610	THERMOPLASTIC PAVEMENT MARKING - LINE 16"	FOOT	88	88	0
* 78000650	THERMOPLASTIC PAVEMENT MARKING - LINE 24"	FOOT	126	76	50
* 78100100	RAISED REFLECTIVE PAVEMENT MARKER	EACH	800	147	653
78200020	CURB REFLECTORS	EACH	40	0	40
X4402020	CONCRETE MEDIAN SURFACE REMOVAL	SQ FT	4,300	0	4,300

* SPECIALTY ITEM

REV. - MS

SUMMARY OF QUANTITIES

CONSTRUCTION CODE

RANDOLPH COUNTY 80 FEDERAL / 20 STATE	WASHINGTON COUNTY 80 FEDERAL / 20 STATE
RESURFACING	RESURFACING
0005	0005
RURAL	RURAL

CODE NO.	ITEM	UNIT	TOTAL QUANTITY		
X7030005	TEMPORARY PAVEMENT MARKING REMOVAL	SO FT	56,521	11,304	45,217
Z0033700	LONGITUDINAL JOINT SEALANT	FOOT	63,547	11,770	51,777
Z0034105	MATERIAL TRANSFER DEVICE	TON	26,348	3,606	22,742
Z0036200	PAINT CURB	FOOT	678	0	678
Z0038116	PORTLAND CEMENT CONCRETE SURFACE REMOVAL 3/4"	SO YD	1,916	0	1,916
Z0064505	SECTION CORNER MARKERS	EACH	23	4	19
Ø Z0076600	TRAINEES	HOUR	2000	2000	
Ø Z0076604	TRAINEES TRAINING PROGRAM GRADUATE	HOUR	2000	2000	

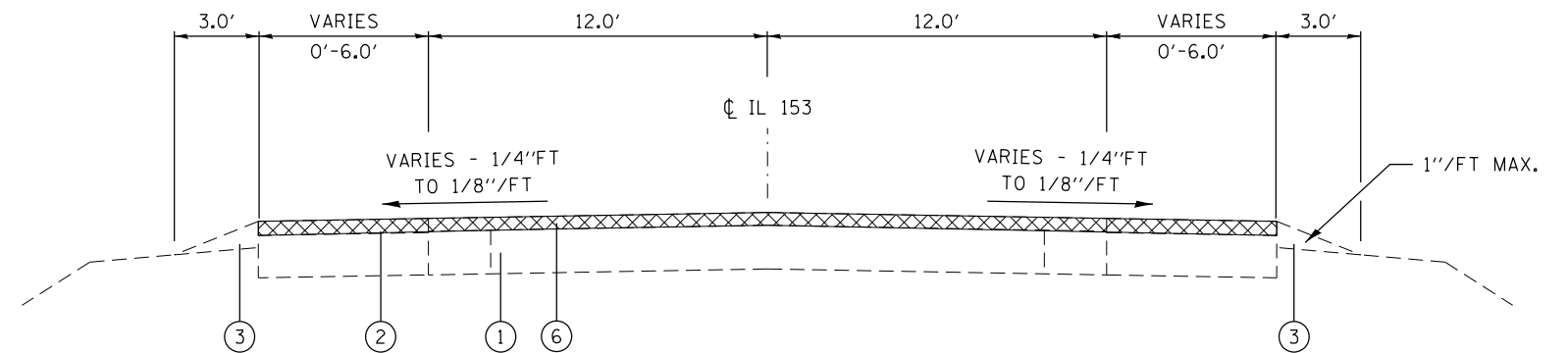
Ø 0042

REV. - MS

LEGEND

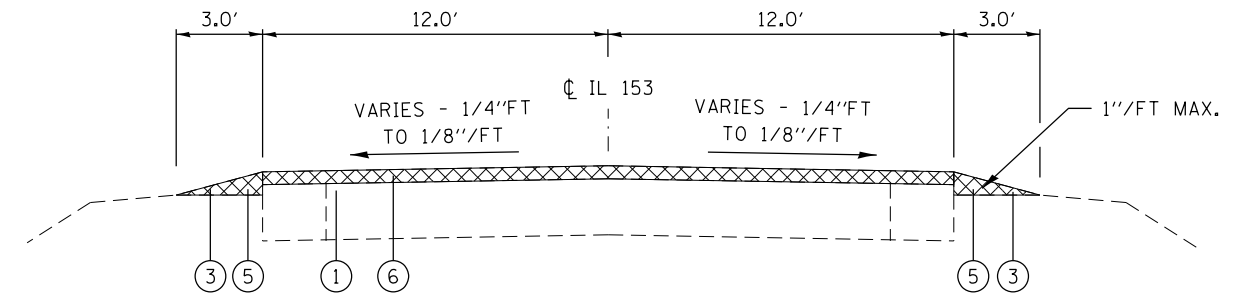
- ① EXISTING PAVEMENT
- ② EXISTING BITUMINOUS SHOULDER
- ③ EXISTING AGGREGATE SHOULDER, TYPE B
- ④ EXISTING V-TYPE GUTTER
- ⑤ PROPOSED EXCAVATING & GRADING EXISTING SHOULDER
- ⑥ PROPOSED HOT-MIX ASPHALT SURFACE REMOVAL, 2 1/4"
- ⑦ PROPOSED HOT-MIX ASPHALT SURFACE REMOVAL, 3/4"
- ⑧ PROPOSED PORTLAND CEMENT CONCRETE SURFACE REMOVAL, 3/4"
- ⑨ PROPOSED CONCRETE MEDIAN SURFACE REMOVAL
- ⑩ PROPOSED CONCRETE MEDIAN SURFACE, 4"
- ⑪ PROPOSED HOT-MIX ASPHALT SURFACE COURSE, IL-9.5, MIX "C", N70, 1 1/2"
- ⑫ PROPOSED HOT-MIX ASPHALT BINDER COURSE, IL-9.5FG, N70, 1 1/4"
- ⑬ PROPOSED BITUMINOUS MATERIALS (TACK COAT)
- ⑭ PROPOSED HOT-MIX ASPHALT SHOULDER, 8"
- ⑮ PROPOSED HOT-MIX ASPHALT SHOULDER
- ⑯ PROPOSED AGGREGATE WEDGE SHOULDER, TYPE B
- ⑰ PROPOSED LONGITUDINAL JOINT SEALANT
- ⑱ PROPOSED STRIP REFLECTIVE CRACK CONTROL TREATMENT

NOTES:
1. HMA SURFACE REMOVAL THICKNESS IS THE REMOVAL DEPTH AT THE ϕ .



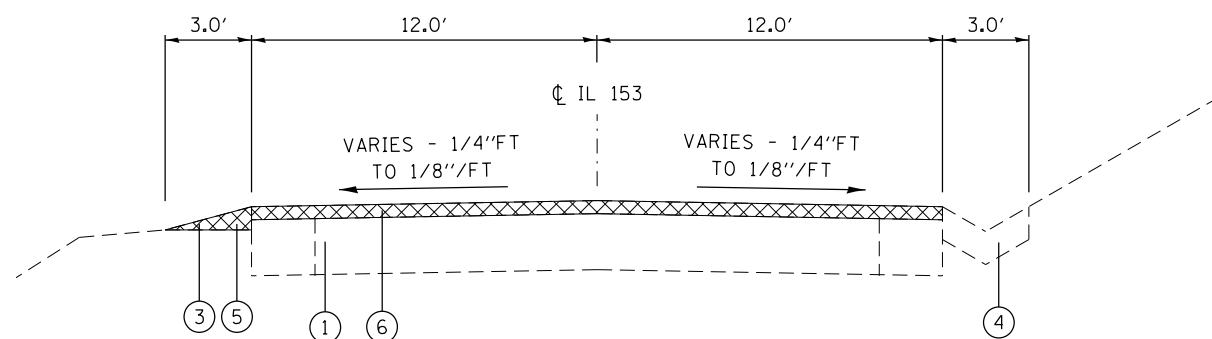
EXISTING TYPICAL SECTION

MS 0.002 TO MS 0.076
MS 3.140 TO MS 3.190
MS 3.190 TO MS 3.270 OMISSION
MS 3.270 TO MS 3.290
MS 4.280 TO MS 4.329
MS 4.329 TO MS 4.370 OMISSION
MS 4.370 TO MS 4.400
MS 5.460 TO MS 5.492
MS 5.492 TO MS 5.523 OMISSION
MS 5.523 TO MS 5.560
MS 12.133 TO MS 12.189



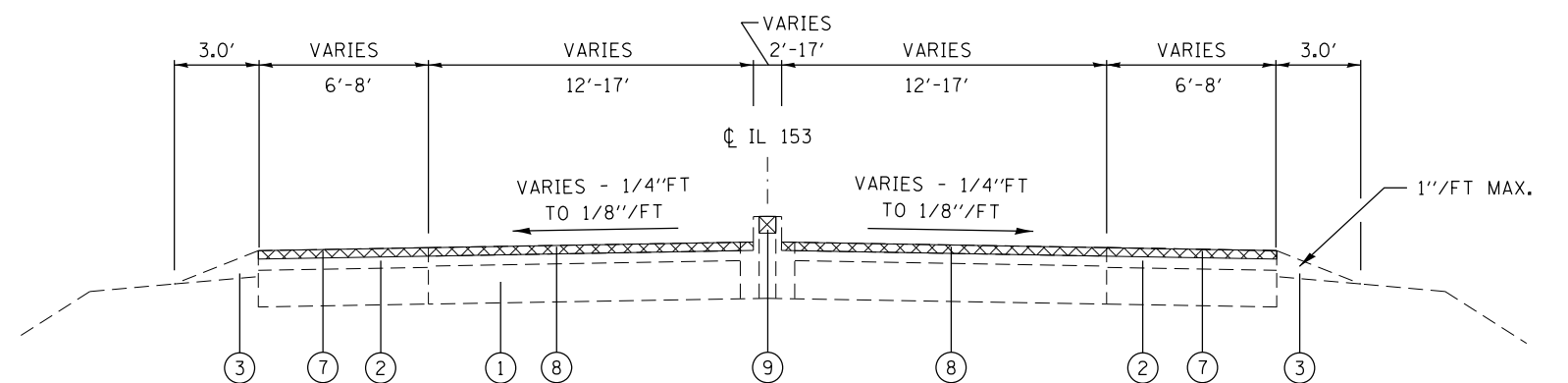
EXISTING TYPICAL SECTION

MS 0.076 TO MS 0.213
MS 0.213 TO MS 0.244 OMISSION
MS 0.244 TO MS 1.340
MS 1.360 TO MS 3.140
MS 3.290 TO MS 4.280
MS 4.400 TO MS 5.460
MS 5.560 TO MS 12.133



EXISTING TYPICAL SECTION

MS 1.340 TO 1.360



EXISTING TYPICAL SECTION

MS 12.189 TO MS 12.281
(MEDIAN BEGINS AT MS 12.219
AND ENDS AT MS 12.279)

FILE NAME =	USER NAME = default	DESIGNED -	REVISED -
P:\Projects\634400 - PTB 176-19 DB Var	Ph I and II\634402 - WD 1\CADD\CADD Sheets\DR	DRAWN -	REVISED -
	PLOT SCALE = 100.0000' / in.	CHECKED -	REVISED -
MODELNAME	PLOT DATE = 1/9/2020	DATE -	REVISED -

**STATE OF ILLINOIS
DEPARTMENT OF TRANSPORTATION**

**TYPICAL SECTIONS
IL ROUTE 153**

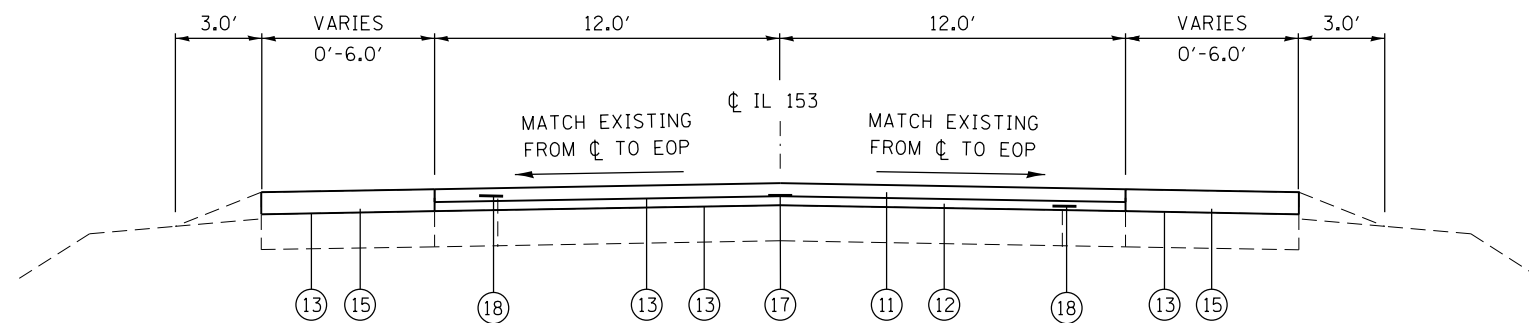
SCALE: N/A SHEET 1 OF 2 SHEETS STA. N/A TO STA. N/A

F.A.S. RTE.	SECTION	COUNTY	TOTAL SHEETS	SHEET NO.
1833	(106, 107) RS-2	RANDOLPH / WASHINGTON	21	7
CONTRACT NO. 76K37				
ILLINOIS FED. AID PROJECT				

LEGEND

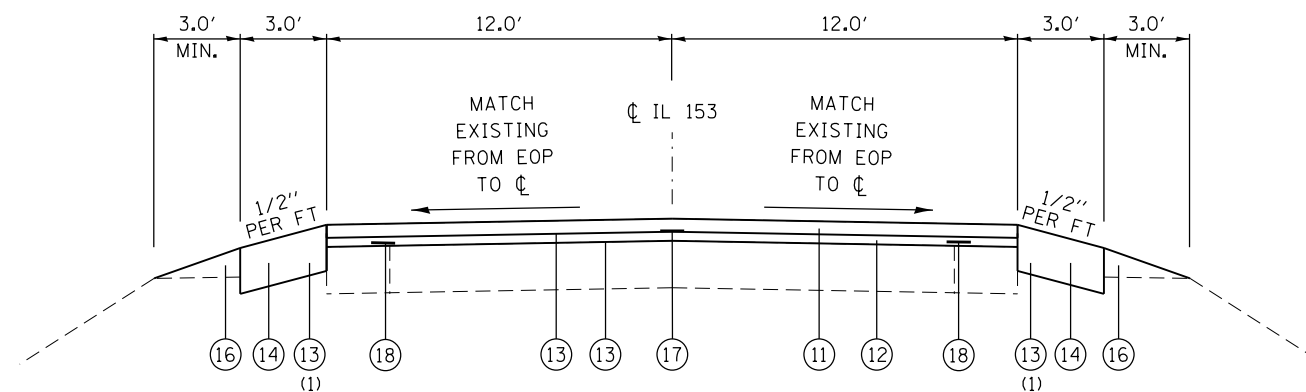
- ① EXISTING PAVEMENT
- ② EXISTING BITUMINOUS SHOULDER
- ③ EXISTING AGGREGATE SHOULDER, TYPE B
- ④ EXISTING V-TYPE GUTTER
- ⑤ PROPOSED EXCAVATING & GRADING EXISTING SHOULDER
- ⑥ PROPOSED HOT-MIX ASPHALT SURFACE REMOVAL, 2 1/4"
- ⑦ PROPOSED HOT-MIX ASPHALT SURFACE REMOVAL, 3/4"
- ⑧ PROPOSED PORTLAND CEMENT CONCRETE SURFACE REMOVAL, 3/4"
- ⑨ PROPOSED CONCRETE MEDIAN SURFACE REMOVAL
- ⑩ PROPOSED CONCRETE MEDIAN SURFACE, 4"
- ⑪ PROPOSED HOT-MIX ASPHALT SURFACE COURSE, IL-9.5, MIX "C", N70, 1 1/2"
- ⑫ PROPOSED HOT-MIX ASPHALT BINDER COURSE, IL-9.5FG, N70, 1 1/4"
- ⑬ PROPOSED BITUMINOUS MATERIALS (TACK COAT)
- ⑭ PROPOSED HOT-MIX ASPHALT SHOULDER, 8"
- ⑮ PROPOSED HOT-MIX ASPHALT SHOULDER
- ⑯ PROPOSED AGGREGATE WEDGE SHOULDER, TYPE B
- ⑰ PROPOSED LONGITUDINAL JOINT SEALANT
- ⑱ PROPOSED STRIP REFLECTIVE CRACK CONTROL TREATMENT

NOTES:
1. HMA SURFACE REMOVAL THICKNESS IS THE REMOVAL DEPTH AT THE ϕ .



PROPOSED TYPICAL SECTION

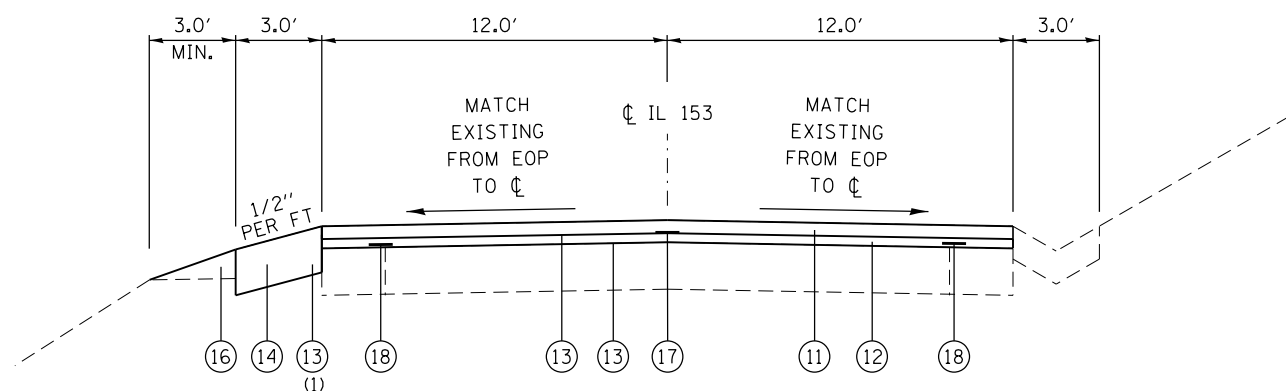
MS 0.002 TO MS 0.076
MS 3.140 TO MS 3.190
MS 3.190 TO MS 3.270 OMISSION
MS 3.270 TO MS 3.290
MS 4.280 TO MS 4.329
MS 4.329 TO MS 4.370 OMISSION
MS 4.370 TO MS 4.400
MS 5.460 TO MS 5.492
MS 5.492 TO MS 5.523 OMISSION
MS 5.523 TO MS 5.560
MS 12.133 TO MS 12.189



PROPOSED TYPICAL SECTION

MS 0.076 TO MS 0.213
MS 0.213 TO MS 0.244 OMISSION
MS 0.244 TO MS 1.340*
MS 1.360 TO MS 3.140
MS 3.290 TO MS 4.280
MS 4.400 TO MS 5.460
MS 5.560 TO MS 12.133

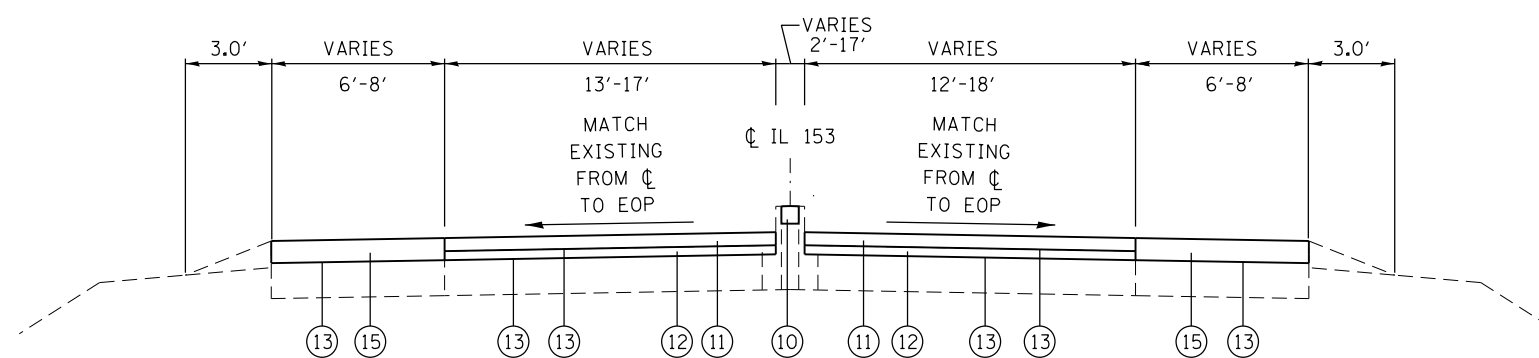
*LT. SHLDR. OMISSION MS 0.244 TO MS 0.275



PROPOSED TYPICAL SECTION

MS 1.340 TO 1.360

NOTE:
(1) 3 APPLICATIONS REQUIRED



PROPOSED TYPICAL SECTION

MS 12.189 TO MS 12.281
(MEDIAN BEGINS AT MS 12.219
AND ENDS AT MS 12.279)

FILE NAME =	USER NAME = default	DESIGNED -	REVISED -
P:\Projects\634400 - PTB 176-19 DB Var	Ph I and II\634402 - WO 1\CADD\CADD Sheets\DWG	DRAWN -	REVISED -
MODELNAME	PLOT SCALE = 100.0000' / in.	CHECKED -	REVISED -
	PLOT DATE = 1/9/2020	DATE -	REVISED -

**STATE OF ILLINOIS
DEPARTMENT OF TRANSPORTATION**

**TYPICAL SECTIONS
IL ROUTE 153**

SCALE: N/A SHEET 2 OF 2 SHEETS STA. N/A TO STA. N/A

F.A.S. RTE.	SECTION	COUNTY	TOTAL SHEETS	SHEET NO.
1833	(106, 107) RS-2	RANDOLPH / WASHINGTON	21	8
CONTRACT NO. 76K37				
ILLINOIS FED. AID PROJECT				

PATCHING SCHEDULE								
LOCATION MILE STATION	SOUTHBOUND		NORTHBOUND		AREA (SQ YD)	PAVEMENT PATCHING TYPE II 12 INCH (SQ YD)	PAVEMENT PATCHING TYPE III 12 INCH (SQ YD)	PAVEMENT PATCHING TYPE IV 12 INCH (SQ YD)
	LENGTH	WIDTH	LENGTH	WIDTH				
	(FOOT)	(FOOT)	(FOOT)	(FOOT)				
0.010	30	30			120.0			120
0.244	6	12	6	12	19.2		20	
0.400					0.0			
0.460	6	12	6	12	19.2		20	
0.610	100	2			26.7			27
0.660	6	12			9.6	10		
0.870	12	12	12	12	38.4			39
0.880	12	12	12	12	38.4			39
0.880	200	2			53.3			54
0.960	6	12	6	12	19.2		20	
1.220			6	12	9.6	10		
1.260	6	12			9.6	10		
1.430	100	2			26.7			27
2.380	6	12	6	12	19.2		20	
2.390	100	2			26.7			27
2.430	100	2			26.7			27
2.590	200	2			53.3			54
2.590	6	12	6	12	19.2		20	
2.660	200	2			53.3			54
2.880					0.0			
2.900	10	12	10	12	32.0			32
2.930	200	2			53.3			54
3.100	100	2			26.7			27
3.130	100	2			26.7			27
3.190	6	12	6	12	19.2		20	
3.200	6	12	6	12	19.2		20	
3.210	6	12	6	12	19.2		20	
3.460	6	12	6	12	19.2		20	
3.590	100	2			26.7			27
3.630	6	12	6	12	19.2		20	
3.640			6	12	9.6	10		
3.720	20	12	20	12	64.0			64
3.740	6	12	6	12	19.2		20	
3.760	6	12	6	12	19.2		20	
3.770	6	12			9.6	10		
4.150	6	12	6	12	19.2		20	
4.180	6	12	6	12	19.2		20	
4.280	6	12			9.6	10		
4.570	6	12			9.6	10		
4.770	6	12	6	12	19.2		20	
5.210	150	2			40.0			40
5.340	6	12			9.6	10		
5.400	6	12	6	12	19.2		20	
5.550	8	12	8	12	25.6			26
5.590	6	12			9.6	10		
5.720	6	12			9.6	10		
5.760	8	12			12.8	13		
5.960	6	12	6	12	19.2		20	
6.090	6	12			9.6	10		
6.260	14	12	14	12	44.8			45
6.580	12	12	12	12	38.4			39
6.790	400	2			106.7			107
7.210	6	12			9.6	10		
7.570	6	12			9.6	10		
7.870	8	12	8	12	25.6			26
8.040	30	12	30	12	96.0			96
8.280	15	12	15	12	48.0			48
8.330					0.0			
8.560	14	12	14	12	44.8			45
8.580	15	12			24.0		24	
8.590	6	12			9.6	10		
8.630	6	12	6	12	19.2		20	
8.650	10	12	10	12	32.0			32
8.670	6	12	6	12	19.2		20	
8.690	6	12	6	12	19.2		20	
8.700	6	12	6	12	19.2		20	
8.720	6	12	6	12	19.2		20	
8.730	6	12	6	12	19.2		20	
8.740	6	12	6	12	19.2		20	
8.750	14	12	14	12	44.8			45
8.760	6	12	6	12	19.2		20	
8.780	6	12	6	12	19.2		20	
8.840	20	12	20	12	64.0			64
8.850	6	12	6	12	19.2		20	
8.960	6	12	6	12	19.2		20	

PATCHING SCHEDULE								
LOCATION MILE STATION	SOUTHBOUND		NORTHBOUND		AREA (SQ YD)	PAVEMENT PATCHING TYPE II 12 INCH (SQ YD)	PAVEMENT PATCHING TYPE III 12 INCH (SQ YD)	PAVEMENT PATCHING TYPE IV 12 INCH (SQ YD)
	LENGTH	WIDTH	LENGTH	WIDTH				
	(FOOT)	(FOOT)	(FOOT)	(FOOT)				
8.980	40	12	40	12	128.0			128
9.010	6	12	6	12	19.2		20	
9.030	6	12	6	12	19.2		20	
9.440	6	12	6	12	19.2		20	
9.500	20	12	20	12	64.0			64
9.530	6	12	6	12	19.2		20	
9.640	12	12	12	12	38.4			39
9.660	12	12	12	12	38.4			39
9.940	14	12	14	12	44.8			45
9.950	6	12	6	12	19.2		20	
9.990	15	12	15	12	48.0			48
10.040	6	12	6	12	19.2		20	
10.060	40	2			10.7	11		
10.260	10	12	10	12	32.0			32
10.420	6	12	6	12	19.2		20	
10.430	6	12	6	12	19.2		20	
10.560	6	12	6	12	19.2		20	
10.580	6	12	6	12	19.2		20	
10.590	6	12	6	12	19.2		20	
10.610	6	12	6	12	19.2		20	
10.620	6	12	6	12	19.2		20	
10.640	6	12	6	12	19.2		20	
10.650	6	12	6	12	19.2		20	
10.980	20	12	20	12	64.0			64
11.020	6	12	6	12	19.2		20	
11.030	6	12	6	12	19.2		20	
11.040	6	12	6	12	19.2		20	
11.050			6	12	9.6	10		
11.060	30	12	30	12	96.0			96
11.070	6	12	6	12	19.2		20	
11.090	6	12	6	12	19.2		20	
11.100	6	12	6	12	19.2		20	
11.120	4	12	4	12	12.8	13		
11.250	6	12	6	12	19.2		20	
11.260			4	12	6.4	7		
11.270	10	12	10	12	32.0			32
11.290			4	12	6.4	7		
11.330	6	12	6	12	19.2		20	
11.370	4	12	4	12	12.8	13		
11.390	40	12	40	12	128.0			128
11.410			4	12	6.4	7		
11.420	12	12	12	12	38.4			39
11.430	4	12	4	12	12.8	13		
11.440	4	12	4	12	12.8	13		
11.590	160	2			42.7			43
11.650	15	12	15	12	48.0			48
11.800	6	12	6	12	19.2		20	
11.830	15	12	15	12	48.0			48
12.090	15	12	15	12	48.0			48
12.100	15	12	15	12	48.0			48
12.110	8	12	8	12	12.8	13		
12.210	15	14	15	14	56.0			56
12.224			40	16	85.3			86
12.243	6	16			12.8	13		
12.253	6	16			12.8	13		
12.262	6	16			12.8	13		
12.272	6	16			12.8	13		
12.291	6	16			12.8	13		
SUBTOTAL						325	1,064	2,443
5% INCREASE						17	54	123
TOTAL						342	1,118	2,566

MEDIAN SCHEDULE		
LOCATION	CONCRETE MEDIAN SURFACE REMOVAL	CONCRETE MEDIAN SURFACE, 4 INCH
	(SQ FT)	(SQ FT)
CENTER MEDIAN AT IL 15	4231	4231
CORNER ISLAND AT IL 15	69	69
TOTAL	4300	4300

SIDEROAD SCHEDULE									
LOCATION		ROAD NAME	EXISTING SURFACE	LENGTH	WIDTH	HMA SURFACE REMOVAL BUTT JOINT	TEMPORARY RAMP	BITUMINOUS MATERIALS (TACK COAT)	INCIDENTAL HMA SURFACING
MILE STATION	RT/LT								
0.026	RT	WEST MAPLE ST.	OIL & CHIP	55	7.5	46	46	21	4
0.133	RT	WEST ELM ST.	OIL & CHIP	55	7.5	46	46	21	4
1.010	LT	CITY LAKE ROAD	OIL & CHIP	50	7.5	42	42	19	4
1.260	RT	TALBERT LANE	OIL & CHIP	40	7.5	34	34	15	3
1.260	LT	TALBERT LANE	OIL & CHIP	55	7.5	46	46	21	4
2.742	RT	HONEYSUCKLE ROAD	OIL & CHIP	60	7.5	50	50	23	5
2.742	LT	HONEYSUCKLE ROAD	OIL & CHIP	88	7.5	74	74	33	7
3.240	RT	DEER LANE	OIL & CHIP	24	7.5	20	20	9	2
3.738	LT	TWIN LAKES ROAD	AGGREGATE	62	7.5	52	52	24	5
3.852	LT	TWIN LAKE LANE	AGGREGATE	50	7.5	42	42	19	4
4.230	RT	ROSE ROAD	OIL & CHIP	50	7.5	42	42	19	4
4.230	LT	MARISSA ROAD	OIL & CHIP	62	7.5	52	52	24	5
4.742	RT	COUNTY ROAD 29	OIL & CHIP	112	7.5	94	94	42	8
6.253	LT	MARIGOLD ROAD	OIL & CHIP	58	7.5	49	49	22	5
8.260	RT	COUNTY ROAD 10	BITUMINOUS	140	7.5	117	117	53	10
8.260	LT	COUNTY ROAD 10	BITUMINOUS	94	7.5	79	79	36	7
9.271	LT	DARMSTADT ROAD	OIL & CHIP	60	7.5	50	50	23	5
9.523	RT	JIMTOWN ROAD	OIL & CHIP	72	7.5	60	60	27	6
10.279	LT	IRIS ROAD	OIL & CHIP	65	7.5	55	55	25	5
10.968	RT	SHAMROCK LANE	OIL & CHIP	64	7.5	54	54	24	5
11.287	RT	STONE CHURCH ROAD	OIL & CHIP	66	7.5	55	55	25	5
11.287	LT	STONE CHURCH ROAD	OIL & CHIP	112	7.5	94	94	42	8
TOTAL						1,253	1,253	567	115

* NOT A TOTAL QUANTITY
(1) PLACE ON MILLED SURFACE AT A RATE OF 0.05 POUNDS PER SQUARE FOOT

SURFACE REMOVAL SCHEDULE									
LOCATION				HMA SURFACE REMOVAL BUTT JOINT	TEMPORARY RAMP	HMA SURFACE REMOVAL, 3/4"	HMA SURFACE REMOVAL, 2 1/4"	PCC SURFACE REMOVAL 3/4"	
MILE STATION	TO	MILE STATION	RT/LT						(SQ YD)
0.002	TO	0.055		276	276			1,122	
0.055	TO	0.076						370	
0.076	TO	0.213		53	53			1,876	
0.213	TO	0.244	OMISSION						
0.244	TO	1.340		53	53			15,378	
1.340	TO	3.140						25,344	
3.140	TO	3.190		80	80			976	
3.190	TO	3.270	OMISSION						
3.270	TO	3.290		80	80			342	
3.290	TO	4.280						13,939	
4.280	TO	4.300	RT					211	
4.280	TO	4.300	LT					141	
4.300	TO	4.329		80	80			532	
4.329	TO	4.370	OMISSION						
4.370	TO	4.390		80	80			342	
4.390	TO	4.400	RT					70	
4.390	TO	4.400	LT					106	
4.400	TO	5.460						14,925	
5.460	TO	5.492		80	80			596	
5.492	TO	5.523	OMISSION						
5.523	TO	5.560		80	80			701	
5.560	TO	12.133						92,548	
12.133	TO	12.189						1,242	
12.189	TO	12.281		339	339	551		1,916	
TOTAL				1,202	1,202	551	170,762	1,916	

* NOT A TOTAL QUANTITY

RESURFACING SCHEDULE											
MILE STATION	TO	LOCATION		BITUMINOUS MATERIALS (TACK COAT)	BITUMINOUS MATERIALS (TACK COAT)	HOT-MIX ASPHALT BINDER COURSE, IL-9.5FG, N70	HOT-MIX ASPHALT SURFACE COURSE, IL-9.5, MIX "C", N70	STRIP REFLECTIVE CRACK CONTROL	LONGITUDINAL JOINT SEALANT	MATERIAL TRANSFER DEVICE	
		FEET	FEET								(POUND)
0.002	TO	0.076	390.72	24	469	235	73	782	391	161	
0.076	TO	0.213	723.36	24	869	435	136	1,447	724	299	
0.213	TO	0.244	OMISSION								
0.244	TO	0.275	163.68	24	197	99	31	328	164	68	
0.275	TO	1.340	5623.20	24	6,748	3,374	1,050	11,247	5,624	2,310	
1.340	TO	1.360	105.60	24	127	64	20	212	106	44	
1.360	TO	3.140	9398.40	24	11,279	5,640	1,755	18,797	9,399	3,861	
3.140	TO	3.190	264.00	24	317	159	50	528	264	110	
3.190	TO	3.270	OMISSION								
3.270	TO	3.290	105.60	24	127	64	20	212	106	44	
3.290	TO	4.280	5227.20	24	6,273	3,137	976	10,455	5,228	2,147	
4.280	TO	4.329	258.72	24	311	156	49	518	259	107	
4.329	TO	4.370	OMISSION								
4.370	TO	4.400	158.40	24	191	96	30	317	159	66	
4.400	TO	5.460	5596.80	24	6,717	3,359	1,045	11,194	5,597	2,299	
5.460	TO	5.492	168.96	24	203	102	32	338	169	70	
5.492	TO	5.523	OMISSION								
5.523	TO	5.560	195.36	24	235	118	37	391	196	81	
5.560	TO	12.133	34705.44	24	41,647	20,824	6,479	7,775	34,706	14,254	
12.133	TO	12.170	195.36	24	235	118	37	391	196	81	
12.170	TO	12.219	258.72	31	402	201	63	518	259	138	
12.219	TO	12.244	132.00	21	139	70	22	265	132	48	
12.244	TO	12.264	105.60	18	93	47	15	212	106	33	
12.264	TO	12.281	89.76		367	184	58	69	180	127	
SUBTOTAL					76,946	38,482					
TOTAL					115,428		11,978	14,370	127,743	63,547	26,348

* NOT A TOTAL QUANTITY
(1) PLACE ON MILLED SURFACE AT A RATE OF 0.05 POUNDS PER SQUARE FOOT
(2) PLACE BETWEEN LIFTS AT A RATE OF 0.025 POUNDS PER SQUARE FOOT

SHOULDER SCHEDULE														
MILE STATION	TO	LOCATION			EXCAVATING AND GRADING EXISTING SHOULDER	HOT-MIX ASPHALT SHOULDERS	HOT-MIX ASPHALT SHOULDERS, 8"	BITUMINOUS MATERIALS (TACK COAT)	BITUMINOUS MATERIALS (TACK COAT)	AGGREGATE WEDGE SHOULDER, TYPE B	SHOULDER RUMBLE STRIPS, 8 INCH			
		MILE STATION	RT/LT	LENGTH								WIDTH	(UNIT)	(TON)
0.002	TO	0.076	RT/LT	390.72	12						782			
0.076	TO	0.213	RT/LT	723.36	6	15		235	326	57	1,447			
0.213	TO	0.244	OMISSION								111			
0.244	TO	0.275	RT	163.68	3	2		55		7	164			
0.275	TO	1.340	RT/LT	5623.2	6	113		3,749	2,531	438	11,247			
1.340	TO	1.360	LT	105.6	3	2		36	24	5	106			
1.360	TO	3.140	RT/LT	9398.4	6	188		6,266	4,230	731	18,797			
3.140	TO	3.190	RT/LT	264	12			55	159		528			
3.190	TO	3.270	OMISSION											
3.270	TO	3.290	RT/LT	105.6	12			22	64		212			
3.290	TO	4.280	RT/LT	5227.2	6	105		3,485	2,353	407	10,455			
4.280	TO	4.329	RT/LT	258.72	12			54	156		518			
4.329	TO	4.370	OMISSION											
4.370	TO	4.400	RT/LT	158.4	12			33	96		317			
4.400	TO	5.460	RT/LT	5596.8	6	112		3,732	2,519	436	11,194			
5.460	TO	5.492	RT/LT	168.96	12			35	102		338			
5.492	TO	5.523	OMISSION											
5.523	TO	5.560	RT/LT	195.36	12			41	118		391			
5.560	TO	12.133	RT/LT	34705.44	6	695		23,137	15,618	2,700	69,411			
12.133	TO	12.189	RT/LT	295.68	16			81	237		592			
12.189	TO	12.219	RT/LT	158.4	16			44	127		317			
12.219	TO	12.269	RT/LT	264	16			73	212		529			
TOTAL								1232	519	40,943	1,506	27,638	4,781	127,456

* NOT A TOTAL QUANTITY
(1) PLACE ON MILLED SURFACE AT A RATE OF 0.05 POUNDS PER SQUARE FOOT
(2) PLACE BETWEEN LIFTS AT A RATE OF 0.025 POUNDS PER SQUARE FOOT, 3 LIFTS REQUIRED

FILE NAME =	USER NAME = default	DESIGNED -	REVISED -
P:\Projects\634402 - PTB 176-19 DB Var	DR	DR	DR
	PLOT SCALE = 100.0000' / in.	CHECKED -	REVISED -
\$MODELNAME\$	PLOT DATE = 1/9/2020	DATE -	REVISED -

STATE OF ILLINOIS
DEPARTMENT OF TRANSPORTATION

SCHEDULES OF QUANTITIES
IL ROUTE 153

SCALE: N/A SHEET 2 OF 5 SHEETS STA. N/A TO STA. N/A

F.A.S. RTE.	SECTION	COUNTY	TOTAL SHEETS	SHEET NO.
1833	(106, 107) RS-2	RANDOLPH / WASHINGTON	21	10
CONTRACT NO. 76K37				
ILLINOIS FED. AID PROJECT				

ENTRANCE SCHEDULE							
LOCATION		TYPE	EXISTING SURFACE	LENGTH	WIDTH	BITUMINOUS MATERIALS (TACK COAT)	INCIDENTAL HMA SURFACING
MILE STATION	RT/LT						
0.053	RT	PRIVATE	AGG	19	3	2.85	0.54
0.053	LT	FIELD	EARTH	15	3	2.25	0.42
0.067	RT	PRIVATE	AGG	36	3	5.40	1.01
0.084	RT	PRIVATE	AGG	21	3	3.15	0.59
0.089	RT	PRIVATE	AGG	32	3	4.80	0.90
0.108	RT	PRIVATE	AGG	30	3	4.50	0.84
0.160	RT	PRIVATE	AGG	29	3	4.35	0.82
0.198	RT	FIELD	AGG	34	3	5.10	0.96
0.260	LT	PRIVATE	AGG	50	3	7.50	1.40
0.285	RT	PRIVATE	AGG	40	3	6.00	1.12
0.297	RT	PRIVATE	AGG	44	3	6.60	1.24
0.320	RT	FIELD	AGG	22	3	3.30	0.62
0.350	RT	COMMERCIAL	AGG	57	3	8.55	1.60
0.392	RT	PRIVATE	AGG	54	3	8.10	1.52
0.499	RT	FIELD	AGG	52	3	7.80	1.46
0.511	LT	PRIVATE	AGG	100	3	15.00	2.80
0.520	RT	FIELD	AGG	29	3	4.35	0.82
0.626	RT	PRIVATE	AGG	52	3	7.80	1.46
0.768	RT	PRIVATE	AGG	44	3	6.60	1.24
0.801	RT	PRIVATE	AGG	41	3	6.15	1.15
0.987	RT	PRIVATE	AGG	43	3	6.45	1.21
1.000	RT	PRIVATE	AGG	38	3	5.70	1.07
1.091	RT	PRIVATE	AGG	30	3	4.50	0.84
1.168	LT	PRIVATE	AGG	47	3	7.05	1.32
1.338	RT	PRIVATE	AGG	34	3	5.10	0.96
1.472	RT	PRIVATE	AGG	33	3	4.95	0.93
1.508	LT	PRIVATE	AGG	29	3	4.35	0.82
1.541	LT	PRIVATE	AGG	52	3	7.80	1.46
1.600	LT	FIELD	EARTH	33	3	4.95	0.93
1.623	RT	PRIVATE	AGG	35	3	5.25	0.98
1.642	LT	PRIVATE	AGG	39	3	5.85	1.10
1.647	RT	PRIVATE	AGG	31	3	4.65	0.87
1.851	LT	PRIVATE	AGG	21	3	3.15	0.59
1.867	LT	PRIVATE	AGG	34	3	5.10	0.96
1.908	LT	FIELD	AGG	29	3	4.35	0.82
1.953	LT	PRIVATE	AGG	35	3	5.25	0.98
1.961	RT	PRIVATE	BITUMINOUS	44	3	6.60	1.24
2.038	RT	PRIVATE	AGG	72	3	10.80	2.02
2.187	LT	PRIVATE	AGG	34	3	5.10	0.96
2.276	RT	PRIVATE	AGG	52	3	7.80	1.46
2.379	LT	PRIVATE	AGG	23	3	3.45	0.65
2.445	LT	COMMERCIAL	AGG	48	3	7.20	1.35
2.453	RT	PRIVATE	AGG	40	3	6.00	1.12
2.496	RT	PRIVATE	AGG	36	3	5.40	1.01
2.539	LT	COMMERCIAL	AGG	52	3	7.80	1.46
2.539	RT	FIELD	AGG	40	3	6.00	1.12
2.633	LT	PRIVATE	BITUMINOUS	44	3	6.60	1.24
2.652	LT	PRIVATE	BITUMINOUS	28	3	4.20	0.79
2.939	RT	PRIVATE	AGG	50	3	7.50	1.40
2.988	LT	PRIVATE	AGG	24	3	3.60	0.68
3.029	LT	PRIVATE	AGG	26	3	3.90	0.73
3.114	LT	PRIVATE	AGG	23	3	3.45	0.65
3.243	LT	PRIVATE	AGG	26	3	3.90	0.73
3.354	LT	PRIVATE	AGG	47	3	7.05	1.32
3.397	LT	PRIVATE	AGG	32	3	4.80	0.90
3.426	LT	PRIVATE	AGG	51	3	7.65	1.43
3.458	LT	PRIVATE	AGG	46	3	6.90	1.29
3.506	LT	PRIVATE	AGG	32	3	4.80	0.90
3.558	LT	PRIVATE	AGG	29	3	4.35	0.82
3.573	LT	PRIVATE	AGG	30	3	4.50	0.84
3.581	RT	PRIVATE	AGG	34	3	5.10	0.96
3.608	LT	PRIVATE	AGG	38	3	5.70	1.07
3.682	LT	PRIVATE	AGG	30	3	4.50	0.84
3.792	RT	PRIVATE	AGG	34	3	5.10	0.96
3.912	LT	PRIVATE	AGG	52	3	7.80	1.46
4.022	RT	PRIVATE	AGG	63	3	9.45	1.77
4.142	LT	PRIVATE	AGG	30	3	4.50	0.84
4.152	LT	PRIVATE	AGG	34	3	5.10	0.96
4.444	RT	PRIVATE	AGG	30	3	4.50	0.84
4.581	LT	PRIVATE	AGG	42	3	6.30	1.18
4.663	LT	PRIVATE	AGG	45	3	6.75	1.26
4.682	LT	PRIVATE	AGG	32	3	4.80	0.90
4.703	LT	PRIVATE	AGG	32	3	4.80	0.90
4.781	LT	PRIVATE	AGG	32	3	4.80	0.90
4.843	RT	PRIVATE	AGG	42	3	6.30	1.18

ENTRANCE SCHEDULE							
LOCATION		TYPE	EXISTING SURFACE	LENGTH	WIDTH	BITUMINOUS MATERIALS (TACK COAT)	INCIDENTAL HMA SURFACING
MILE STATION	RT/LT						
4.971	LT	PRIVATE	AGG	39	3	5.85	1.10
4.983	RT	PRIVATE	AGG	72	3	10.80	2.02
5.000	LT	FIELD	AGG	30	3	4.50	0.84
5.003	RT	PRIVATE	AGG	40	3	6.00	1.12
5.071	RT	PRIVATE	AGG	46	3	6.90	1.29
5.140	RT	FIELD	AGG	20	3	3.00	0.56
5.141	LT	PRIVATE	AGG	35	3	5.25	0.98
5.169	LT	PRIVATE	AGG	40	3	6.00	1.12
5.195	LT	PRIVATE	AGG	33	3	4.95	0.93
5.244	RT	PRIVATE	AGG	39	3	5.85	1.10
5.248	LT	FIELD	EARTH	30	3	4.50	0.84
5.469	LT	FIELD	AGG	33	3	4.95	0.93
5.763	LT	FIELD	AGG	36	3	5.40	1.01
5.800	RT	FIELD	EARTH	30	3	4.50	0.84
6.064	RT	PRIVATE	AGG	34	3	5.10	0.96
6.095	RT	PRIVATE	AGG	44	3	6.60	1.24
6.127	RT	PRIVATE	AGG	41	3	6.15	1.15
6.179	LT	PRIVATE	AGG	37	3	5.55	1.04
6.254	RT	FIELD	EARTH	16	3	2.40	0.45
6.295	LT	PRIVATE	AGG	36	3	5.40	1.01
6.516	LT	PRIVATE	AGG	45	3	6.75	1.26
6.640	LT	FIELD	EARTH	21	3	3.15	0.59
6.695	RT	PRIVATE	AGG	54	3	8.10	1.52
6.814	LT	PRIVATE	AGG	38	3	5.70	1.07
7.031	LT	PRIVATE	AGG	59	3	8.85	1.66
7.086	RT	PRIVATE	AGG	56	3	8.40	1.57
7.264	RT	FIELD	EARTH	27	3	4.05	0.76
7.515	RT	PRIVATE	AGG	40	3	6.00	1.12
7.515	LT	PRIVATE	AGG	38	3	5.70	1.07
7.891	LT	PRIVATE	AGG	36	3	5.40	1.01
7.939	LT	COMMERCIAL	AGG	102	3	15.30	2.86
8.223	RT	FIELD	EARTH	28	3	4.20	0.79
8.236	RT	COMMERCIAL	AGG	114	3	17.10	3.20
8.279	LT	COMMERCIAL	AGG	160	3	24.00	4.48
8.340	LT	PRIVATE	AGG	36	3	5.40	1.01
8.373	LT	PRIVATE	AGG	45	3	6.75	1.26
8.470	RT	FIELD	AGG	30	3	4.50	0.84
8.871	RT	FIELD	EARTH	26	3	3.90	0.73
8.931	RT	COMMERCIAL	AGG	64	3	9.60	1.80
8.961	RT	COMMERCIAL	AGG	26	3	3.90	0.73
9.014	RT	COMMERCIAL	AGG	69	3	10.35	1.94
9.017	LT	PRIVATE	AGG	28	3	4.20	0.79
9.059	RT	COMMERCIAL	AGG	59	3	8.85	1.66
9.359	LT	FIELD	AGG	36	3	5.40	1.01
9.509	LT	PRIVATE	AGG	25	3	3.75	0.70
9.523	LT	PRIVATE	AGG	47	3	7.05	1.32
9.858	RT	FIELD	EARTH	30	3	4.50	0.84
9.861	RT	PRIVATE	AGG	32	3	4.80	0.90
10.078	RT	PRIVATE	AGG	33	3	4.95	0.93
10.181	RT	FIELD	EARTH	31	3	4.65	0.87
10.222	LT	PRIVATE	AGG	36	3	5.40	1.01
10.283	RT	PRIVATE	AGG	45	3	6.75	1.26
10.418	RT	PRIVATE	AGG	50	3	7.50	1.40
10.554	RT	PRIVATE	AGG	23	3	3.45	0.65
10.621	RT	PRIVATE	AGG	40	3	6.00	1.12
10.722	LT	PRIVATE	AGG	37	3	5.55	1.04
10.778	RT	PRIVATE	AGG	43	3	6.45	1.21
10.911	LT	FIELD	EARTH	22	3	3.30	0.62
10.957	RT	PRIVATE	AGG	50	3	7.50	1.40
11.008	RT	PRIVATE	AGG	27	3	4.05	0.76
11.272	LT	PRIVATE	AGG	31	3	4.65	0.87
11.308	LT	PRIVATE	AGG	32	3	4.80	0.90
11.491	RT	PRIVATE	AGG	27	3	4.05	0.76
11.511	RT	PRIVATE	AGG	31	3	4.65	0.87
11.600	RT	FIELD	EARTH	35	3	5.25	0.98
11.769	LT	PRIVATE	AGG	56	3	8.40	1.57
11.770	RT	FIELD	AGG	29	3	4.35	0.82
12.038	LT	FIELD	EARTH	26	3	3.90	0.73
13.300	RT	FIELD	EARTH	30	3	4.50	0.84
TOTAL						855	160

• NOT A TOTAL QUANTITY

FILE NAME =	USER NAME = default	DESIGNED -	REVISED -
P:\Projects\634400 - PTB 176-19 DB Var	Ph I and II\634402 - WO IN\CADD\CADD Sheets\DWG\DRW\ent-schedule.dgn	CHECKED -	REVISED -
#MODELNAME#	PLOT SCALE = 100.0000' / in.	DATE -	REVISED -
	PLOT DATE = 1/9/2020		

**STATE OF ILLINOIS
DEPARTMENT OF TRANSPORTATION**

**SCHEDULES OF QUANTITIES
IL ROUTE 153**

SCALE: N/A SHEET 3 OF 5 SHEETS STA. N/A TO STA. N/A

F.A.S. RTE.	SECTION	COUNTY	TOTAL SHEETS	SHEET NO.
1833	(106, 107) RS-2	RANDOLPH / WASHINGTON	21	11
CONTRACT NO. 76K37				
ILLINOIS FED. AID PROJECT				

PAVEMENT MARKING SCHEDULE															
LOCATION				WHITE THERMOPLASTIC PAVEMENT MARKING - LINE 4" (EDGE LINE)	YELLOW THERMOPLASTIC PAVEMENT MARKING - LINE 4" (SKIP DASH)	YELLOW THERMOPLASTIC PAVEMENT MARKING - LINE 4" (NO PASSING ZONE)	YELLOW THERMOPLASTIC PAVEMENT MARKING - LINE 12"	WHITE THERMOPLASTIC PAVEMENT MARKING - LINE	WHITE THERMOPLASTIC PAVEMENT MARKING - LINE 16"	WHITE THERMOPLASTIC PAVEMENT MARKING - LINE 24"	WHITE THERMOPLASTIC PAVEMENT MARKING - LETTERS & SYMBOLS	RAISED REFLECTIVE PAVEMENT MARKER	CURB REFLECTORS	PAINT CURB	
MILE STATION	TO	MILE STATION	NB/SB	(FOOT)	(FOOT)	(FOOT)	(FOOT)	(FOOT)	(FOOT)	(FOOT)	(SQ FT)	(EACH)	(EACH)	(FOOT)	
0.000	TO	12.280										800			
0.000	TO	0.080		845	106			77		28					
0.080	TO	0.210	SB	1373	172	686			44	24	7				
0.210	TO	0.213		32		32									
0.244	TO	0.430	SB	1964	246	982			44	24	7				
0.430	TO	0.450		211	26										
0.450	TO	0.560	NB	1162	145	581									
0.560	TO	0.680		1267	158										
0.680	TO	0.780	SB	1056	132	528									
0.780	TO	1.150		3907	488										
1.150	TO	1.360	NB	2218	277	1109									
1.360	TO	1.530		1795		1795									
1.530	TO	1.730	SB	2112	264	1056									
1.730	TO	2.560		8765	1096										
2.560	TO	2.740	NB	1901	238	950									
2.740	TO	2.930	SB	2006	251	1003									
2.930	TO	3.160		2429	304										
3.160	TO	3.190	NB	317	40	158									
3.190	TO	3.380	NB	2006	251	1003									
3.380	TO	3.450		739	92										
3.450	TO	3.600	SB	1584	198	792									
3.600	TO	3.980		4013	502										
3.980	TO	4.160	NB	1901	238	950									
4.160	TO	4.200		422	53										
4.200	TO	4.329	SB	1362	170	681									
4.329	TO	5.000		7086	886										
5.000	TO	5.180	NB	1901	238	950									
5.180	TO	5.210		317	40										
5.210	TO	5.490	SB	2957	370	1478									
5.490	TO	8.970		36749	4594										
8.970	TO	9.080	NB	1162	145	581									
9.080	TO	9.210		1373	172										
9.210	TO	9.300	SB	950	119	475									
9.300	TO	9.650		3696	462										
9.650	TO	9.840	NB	2006	251	1003									
9.840	TO	9.870		317	40										
9.870	TO	10.050	SB	1901	238	950									
10.050	TO	11.290		13094	1637										
11.290	TO	11.450	NB	1690	211	845									
11.450	TO	11.490		422	53										
11.490	TO	11.610	SB	1267	158	634									
11.610	TO	11.670		634		634									
11.670	TO	11.790	NB	1267	158	634									
11.790	TO	11.850		634	79										
11.850	TO	12.030	SB	1901	238	950									
12.030	TO	12.160		1373	172										
12.160	TO	12.280		1267		1267	140			50			40	678	
SUBTOTAL				129,349	15,703	22,709	140	77							
TOTAL					167,761		217		88	126	14	800	40	678	

TEMPORARY PAVEMENT MARKING SCHEDULE																
LOCATION				YELLOW SHORT TERM PAVEMENT MARKING	WHITE SHORT TERM PAVEMENT MARKING	SHORT TERM PAVEMENT MARKING REMOVAL	WHITE TEMPORARY PAVEMENT MARKING - LINE 4" (EDGE LINE)	YELLOW TEMPORARY PAVEMENT MARKING - LINE 4" (SKIP DASH)	YELLOW TEMPORARY PAVEMENT MARKING - LINE 4" (NO PASSING ZONE)	YELLOW TEMPORARY PAVEMENT MARKING - LINE	WHITE TEMPORARY PAVEMENT MARKING - LINE 12"	WHITE TEMPORARY PAVEMENT MARKING - LINE 16"	WHITE TEMPORARY PAVEMENT MARKING - LINE 24"	WHITE TEMPORARY PAVEMENT MARKING LETTERS AND SYMBOLS	TEMPORARY PAVEMENT MARKING REMOVAL	
MILE STATION	TO	MILE STATION	NB/SB	(FOOT)	(FOOT)	(SQ FT)	(FOOT)	(FOOT)	(FOOT)	(FOOT)	(FOOT)	(FOOT)	(FOOT)	(SQ FT)	(SQ FT)	
0.000	TO	12.280		19,464		6,488										
0.000	TO	0.080			84	28	845	106			77		28		450	
0.080	TO	0.210	SB		72	24	1373	172	686			44	24	7	857	
0.210	TO	0.213					32		32						21	
0.244	TO	0.430	SB				1964	246	982			44	24	7	1,178	
0.430	TO	0.450					211	26							79	
0.450	TO	0.560	NB				1162	145	581						629	
0.560	TO	0.680					1267	158							475	
0.680	TO	0.780	SB				1056	132	528						572	
0.780	TO	1.150					3907	488							1,465	
1.150	TO	1.360	NB				2218	277	1109						1,201	
1.360	TO	1.530					1795		1795						1,197	
1.530	TO	1.730	SB				2112	264	1056						1,144	
1.730	TO	2.560					8765	1096							3,287	
2.560	TO	2.740	NB				1901	238	950						1,030	
2.740	TO	2.930	SB				2006	251	1003						1,087	
2.930	TO	3.160					2429	304							911	
3.160	TO	3.190	NB				317	40	158						172	
3.190	TO	3.380	NB				2006	251	1003						1,087	
3.380	TO	3.450					739	92							277	
3.450	TO	3.600	SB				1584	198	792						858	
3.600	TO	3.980					4013	502							1,505	
3.980	TO	4.160	NB				1901	238	950						1,030	
4.160	TO	4.200					422	53							158	
4.200	TO	4.329	SB				1362	170	681						738	
4.329	TO	5.000					7086	886							2,657	
5.000	TO	5.180	NB				1901	238	950						1,030	
5.180	TO	5.210					317	40							119	
5.210	TO	5.490	SB				2957	370	1478						1,602	
5.490	TO	8.970					36749	4594							13,781	
8.970	TO	9.080	NB				1162	145	581						629	
9.080	TO	9.210					1373	172							515	
9.210	TO	9.300	SB				950	119	475						515	
9.300	TO	9.650					3696	462							1,386	
9.650	TO	9.840	NB				2006	251	1003						1,087	
9.840	TO	9.870					317	40							119	
9.870	TO	10.050	SB				1901	238	950						1,030	
10.050	TO	11.290					13094	1637							4,910	
11.290	TO	11.450	NB				1690	211	845						915	
11.450	TO	11.490					422	53							158	
11.490	TO	11.610	SB				1267	158	634						686	
11.610	TO	11.670					634		634						422	
11.670	TO	11.790	NB				1267	158	634						686	
11.790	TO	11.850					634	79							238	
11.850	TO	12.030	SB				1901	238	950						1,030	
12.030	TO	12.160					1373	172							515	
12.160	TO	12.280					1267	140	1267	140		50			1,085	
SUBTOTAL				19,464	228	24	1267	129,349	15,703	22,709	140	77				
TOTAL				19,692		6,564		167,761			217		88	126	14	56,521

FILE NAME =	USER NAME = default	DESIGNED -	REVISED -
P:\Projects\634400 - PTB 176-19 DB Ver	1 and 11\634402 - WO 1\CADD\CADD Sheets\DR	DRAWN -	REVISED -
	PLOT SCALE = 100.0000' / in.	CHECKED -	REVISED -
MODELNAME	PLOT DATE = 1/10/2020	DATE -	REVISED -

**STATE OF ILLINOIS
DEPARTMENT OF TRANSPORTATION**

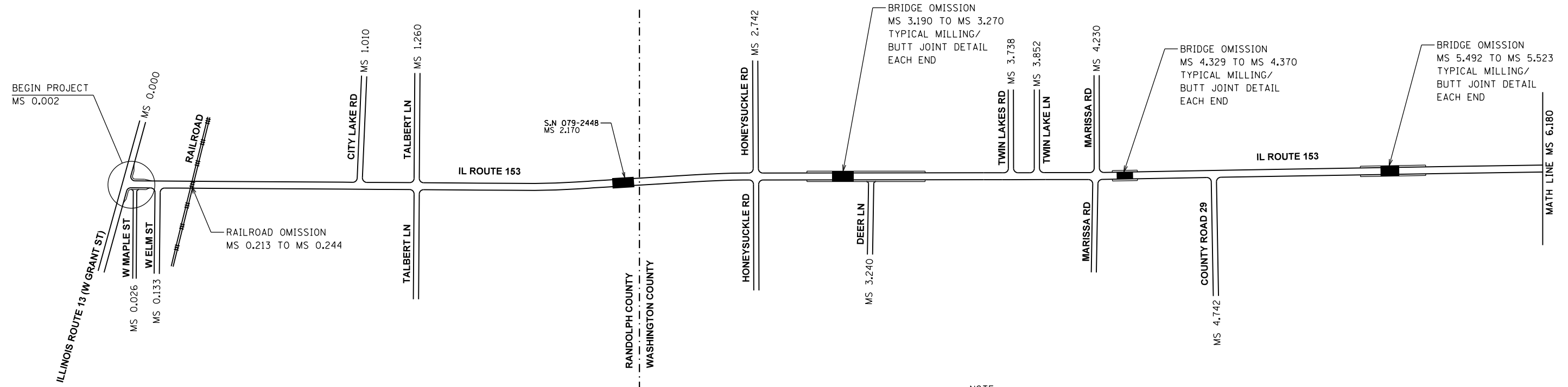
**SCHEDULES OF QUANTITIES
IL ROUTE 153**

SCALE: N/A SHEET 5 OF 5 SHEETS STA. N/A TO STA. N/A

F.A.S. RTE.	SECTION	COUNTY	TOTAL SHEETS	SHEET NO.
1833	(106, 107) RS-2	RANDOLPH / WASHINGTON	21	13
CONTRACT NO. 76K37				
ILLINOIS FED. AID PROJECT				



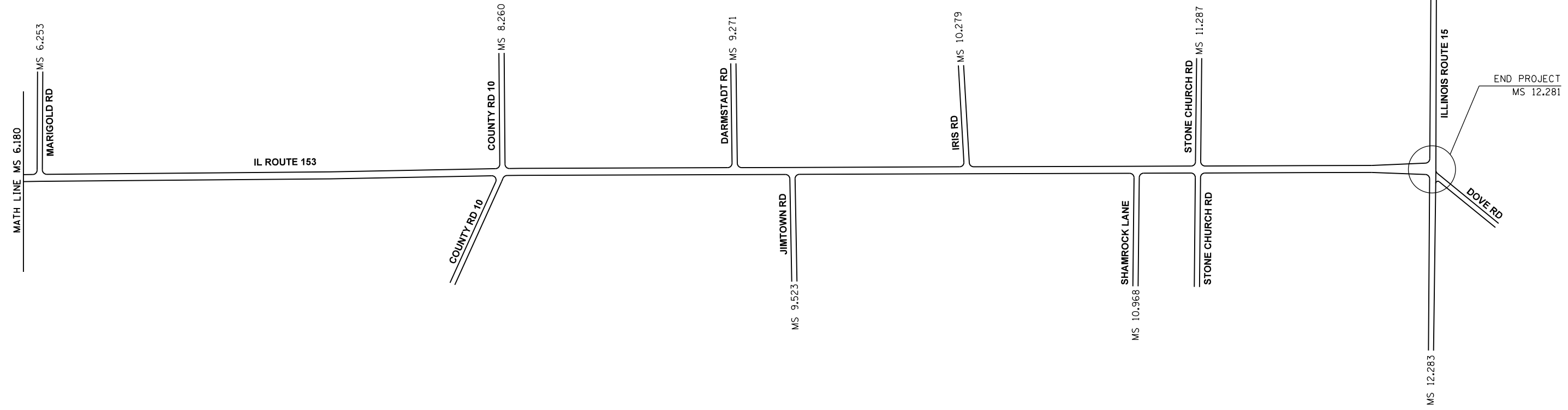
NOT TO SCALE



NOTE:
BRIDGE OMISSION FROM END OF BRIDGE
APPROACH PAVEMENT EACH SIDE, TYP.



NOT TO SCALE

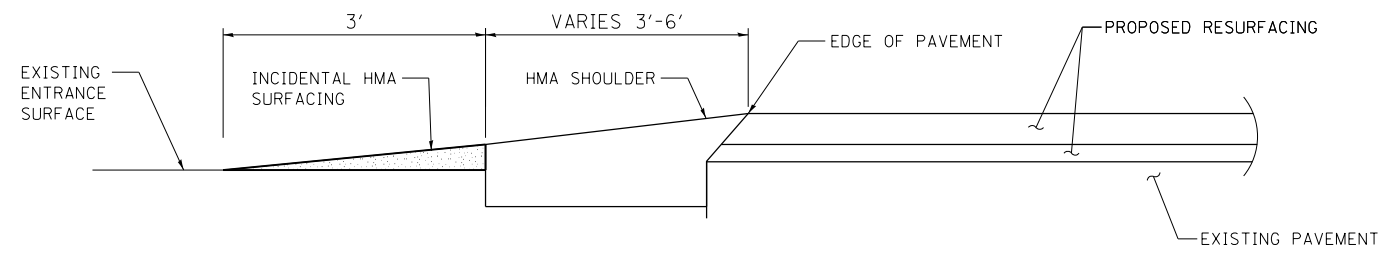


FILE NAME = P:\Projects\634400 - PTB 176-19 DB Ver	USER NAME = default	DESIGNED -	REVISED -
P:\Projects\634400 - PTB 176-19 DB Ver	P:\Projects\634400 - PTB 176-19 DB Ver	CHECKED -	REVISED -
MODELNAME	PLOT DATE = 1/9/2020	DATE -	REVISED -

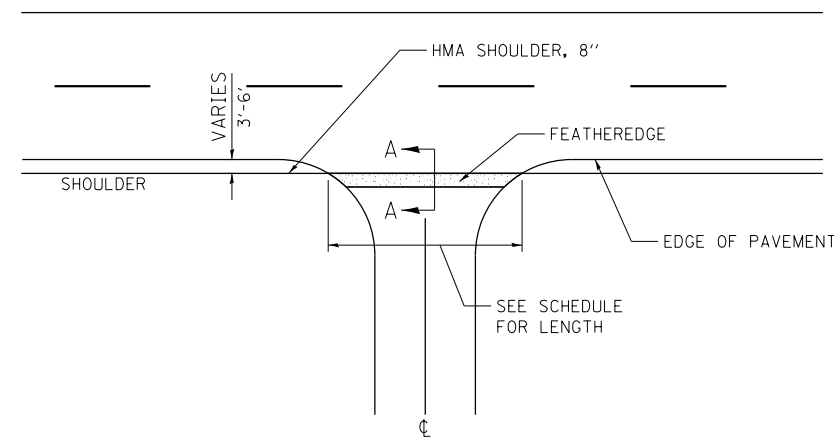
**STATE OF ILLINOIS
DEPARTMENT OF TRANSPORTATION**

LOCATION PLAN IL ROUTE 153			
SCALE: N/A	SHEET 1	OF 1 SHEETS	STA. N/A TO STA. N/A

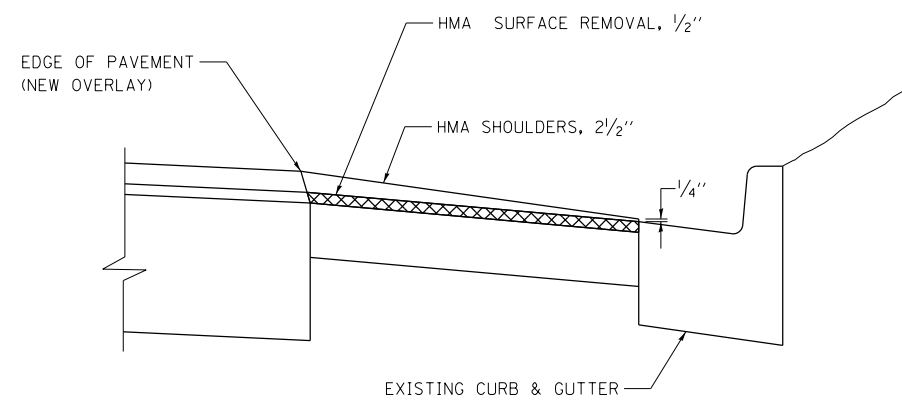
F.A.S. RTE.	SECTION	COUNTY	TOTAL SHEETS	SHEET NO.
1833	(106, 107) RS-2	RANDOLPH / WASHINGTON	21	14
CONTRACT NO. 76K37				
ILLINOIS FED. AID PROJECT				



**FEATHEREDGE DETAIL
SECTION A-A**

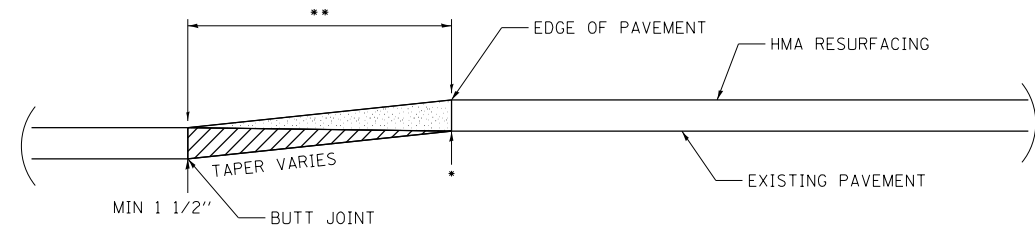


CE, PE, FE
ENTRANCE DETAIL

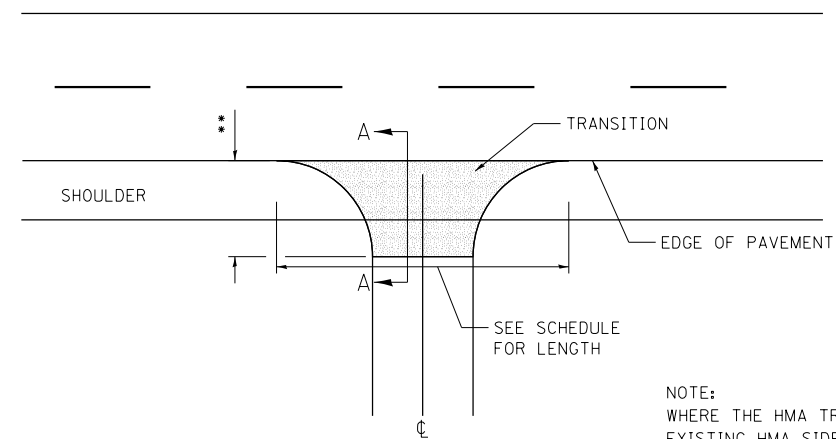


CURBED SHOULDER TREATMENT DETAIL

MS 12.267 LT TO MS 12.280 LT
MS 12.266 RT TO MS 12.280 RT



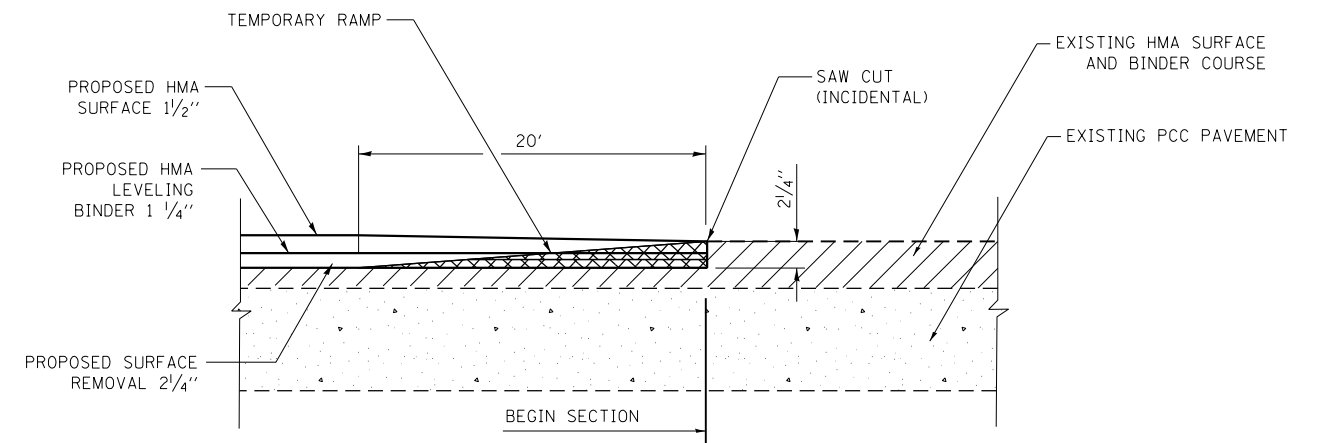
**TRANSITION DETAIL
SECTION A-A
BUTT-JOINT ADDITION**



SIDEROAD DETAIL

•EOP ELEVATION CHANGE	••TOTAL TRANSITION LENGTH
3/4"	3.5'
1"	5'
1-1/2"	7.5'
2"	10'
2-1/2"	12.5'
3"	15'
3-1/2"	17.5'
4"	20'
4-1/2"	22.5'
5"	25'
5-1/2"	27.5'
6"	30'

NOTE:
WHERE THE HMA TRANSITION IS MATCHING INTO AN EXISTING HMA SIDE ROAD SURFACE, A MILLED BUTT JOINT SHALL BE CONSTRUCTED WITHIN THE LIMITS OF THE TOTAL TRANSITION LENGTH ON THE LOCAL ROUTE.



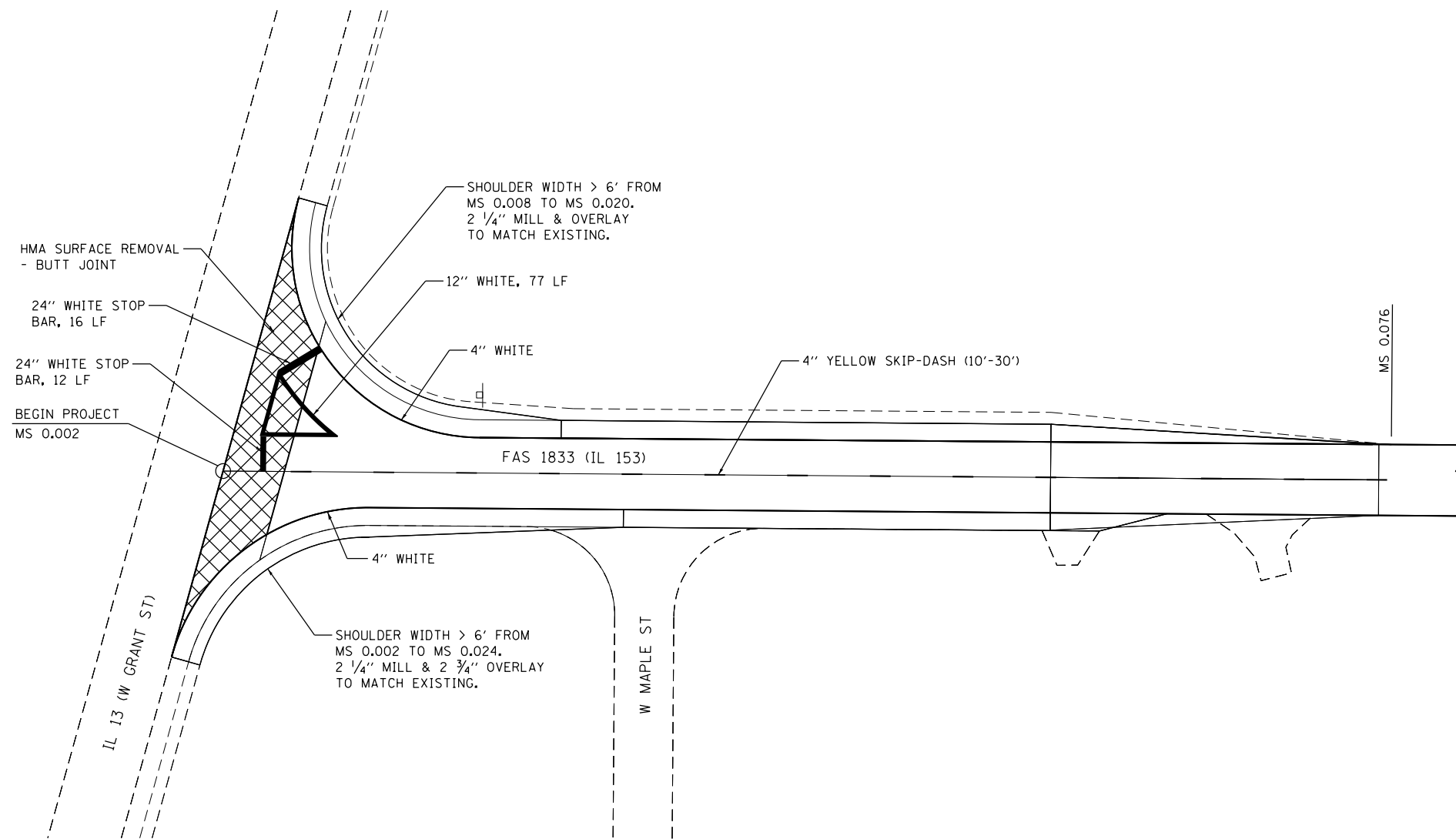
TYPICAL MILLING / BUTT JOINT DETAIL
NOT TO SCALE

FILE NAME =	USER NAME = default	DESIGNED -	REVISED -
P:\Projects\634400 - PTB 176-19 DB Ver	1 and 11\634402 - WD 1\CADD\CADD Sheets\DW	DRAWN	REVISED -
	PLOT SCALE = 40.0000' / in.	CHECKED -	REVISED -
\$MODELNAME\$	PLOT DATE = 1/9/2020	DATE -	REVISED -

**STATE OF ILLINOIS
DEPARTMENT OF TRANSPORTATION**

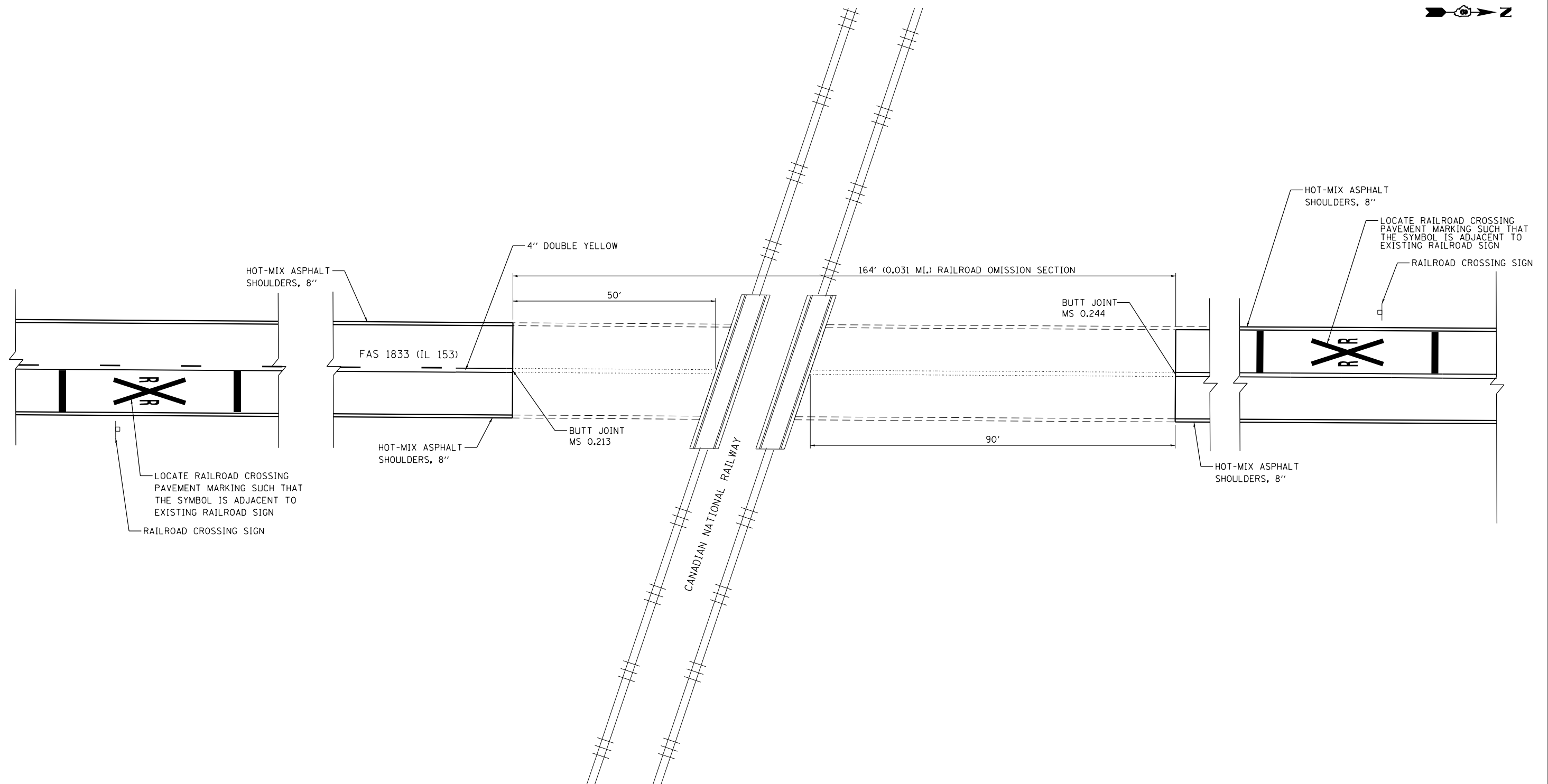
DETAILS IL ROUTE 153			
SCALE: N/A	SHEET 1	OF 4 SHEETS	STA. N/A TO STA. N/A

F.A.S. RTE.	SECTION	COUNTY	TOTAL SHEETS	SHEET NO.
1833	(106, 107) RS-2	RANDOLPH / WASHINGTON	21	15
CONTRACT NO. 76K37				
ILLINOIS FED. AID PROJECT				



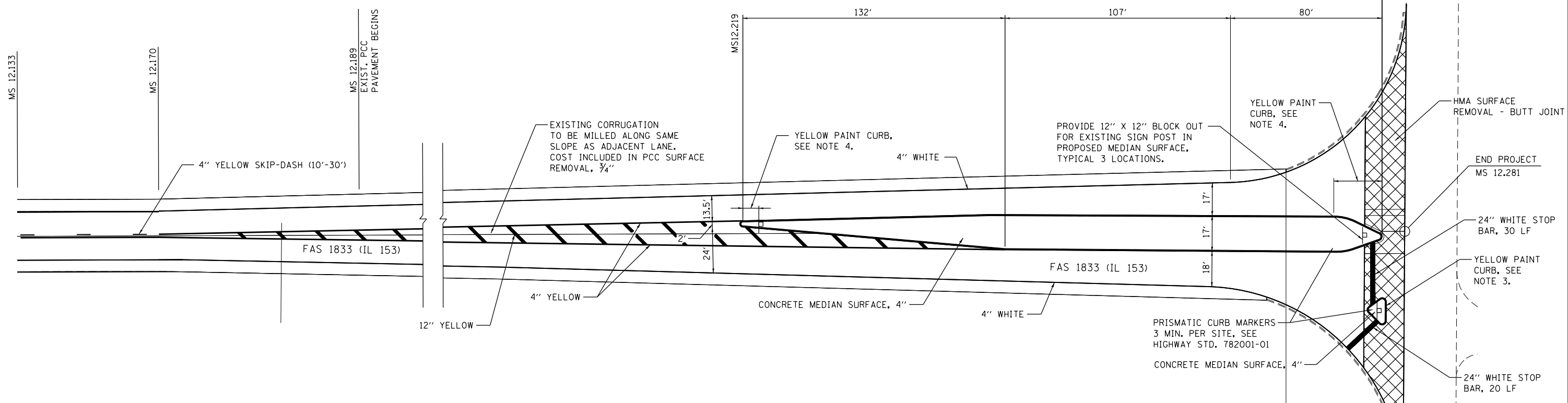
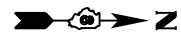
IL 13 INTERSECTION DETAIL
NOT TO SCALE

FILE NAME =	USER NAME = default	DESIGNED -	REVISED -	STATE OF ILLINOIS DEPARTMENT OF TRANSPORTATION	DETAILS IL ROUTE 153			F.A.S. RTE.	SECTION	COUNTY	TOTAL SHEETS	SHEET NO.			
P:\Projects\634400 - PTB 176-19 DB Ver	1 and IIN634402 - WD 1\CADD\CADD Sheets\DWG	DRAWN	REVISED -		SCALE: N/A	SHEET 2	OF 4	SHEETS	STA. N/A	TO STA. N/A	1833	(106, 107) RS-2	RANDOLPH / WASHINGTON	21	16
MODELNAME	PLOT SCALE = 100.0000' / in.	CHECKED -	REVISED -		CONTRACT NO. 76K37										
	PLOT DATE = 1/9/2020	DATE -	REVISED -		ILLINOIS FED. AID PROJECT										



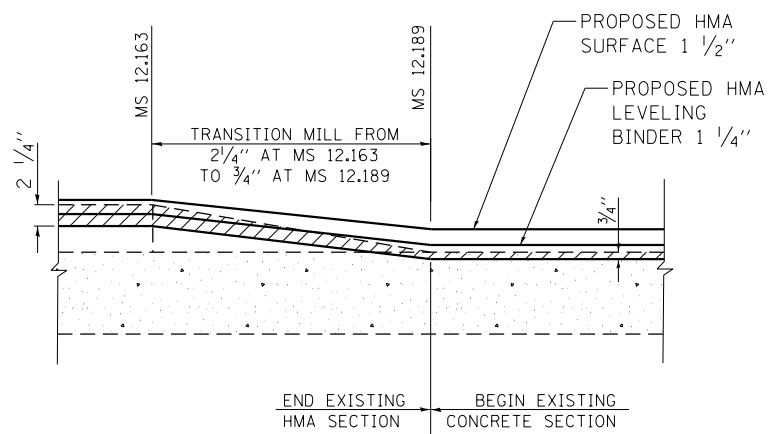
RAILROAD OMISSION DETAIL
NOT TO SCALE

FILE NAME =	USER NAME = default	DESIGNED -	REVISED -	STATE OF ILLINOIS DEPARTMENT OF TRANSPORTATION	DETAILS IL ROUTE 153			F.A.S. RTE.	SECTION	COUNTY	TOTAL SHEETS	SHEET NO.			
P:\Projects\634400 - PTB 176-19 DB Ver	1 and 11\634402 - WO 1\CADD\CADD Sheets\DR	DRAWN	REVISED -		SCALE: 1"=50'	SHEET 3	OF 4	SHEETS	STA. N/A	TO STA. N/A	1833	(106, 107) RS-2	RANDOLPH / WASHINGTON	21	17
MODELNAME	PLOT SCALE = 100.0000' / in.	CHECKED -	REVISED -		CONTRACT NO. 76K37										
	PLOT DATE = 1/9/2020	DATE -	REVISED -		ILLINOIS FED. AID PROJECT										

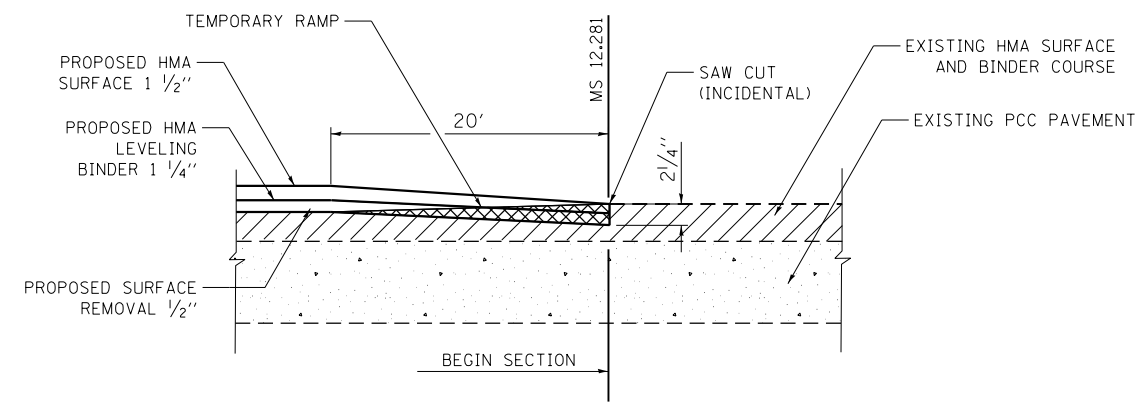


IL 15 INTERSECTION DETAIL
NOT TO SCALE

- NOTES:**
- MEDIAN SURFACE SHALL BE REMOVED AND UNDERLYING SURFACE SHALL BE PREPARED/ LEVELED FOR INSTALLATION OF CONCRETE MEDIAN SURFACE 4 INCH.
 - ALL DIMENSIONS TO FACE OF CURB.
 - PAINT CURB AND NOSE SOLID.
 - PAINT CURB AND NOSE SOLID FOR 10' OR RADIUS OF NOSE, WHICHEVER IS GREATER.



TRANSITION DETAIL
NOT TO SCALE



MILLING / BUTT JOINT DETAILS
NOT TO SCALE

FILE NAME =	USER NAME = default	DESIGNED -	REVISED -
P:\Projects\634400 - PTB 176-19 DB Ver	1 and 11\634402 - WO 1\CADD\CADD Sheets\DR	DRAWN	REVISED -
MODELNAME	PLOT SCALE = 100.0000' / in.	CHECKED -	REVISED -
	PLOT DATE = 1/9/2020	DATE -	REVISED -

**STATE OF ILLINOIS
DEPARTMENT OF TRANSPORTATION**

DETAILS IL ROUTE 153			
SCALE: N/A	SHEET 4	OF 4 SHEETS	STA. N/A TO STA. N/A

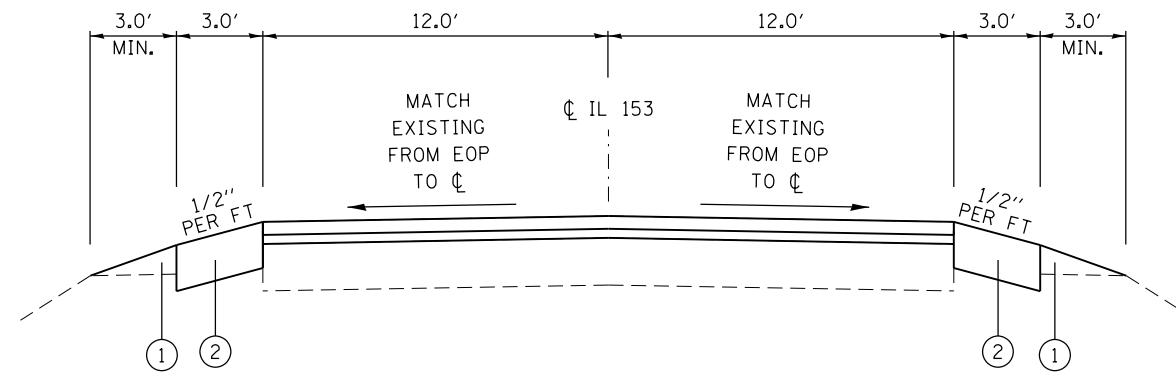
F.A.S. RTE.	SECTION	COUNTY	TOTAL SHEETS	SHEET NO.
1833	(106, 107) R5-2	RANDOLPH / WASHINGTON	21	18
CONTRACT NO. 76K37				
ILLINOIS FED. AID PROJECT				

LEGEND

- ① AGGREGATE WEDGE SHOULDER, TYPE B
- ② HMA SHOULDER, 8"

EROSION AND SEDIMENTATION CONTROL

1. THE WORK DESCRIBED ON THESE DRAWINGS ARE THE INTEGRAL PART OF THE STORM WATER POLLUTION PREVENTION PLAN USED TO OBTAIN THE NPDES FROM IEPA FOR THE CONSTRUCTION OF THIS PROJECT.
2. THE PURPOSE OF THE EROSION AND SEDIMENT CONTROL MEASURES INCLUDED FOR THIS PROJECT IS TO LIMIT THE SEDIMENT POLLUTION IMPACT OF ANY STORM WATER DISCHARGES THAT ORIGINATE ON THIS SITE OR OFF-SITE FLOWS THAT FLOW OVER THE DISTURBED AREAS OR DOWNSTREAM AREAS. A COPY OF THE EROSION AND SEDIMENT CONTROL SCHEDULE BEING IMPLEMENTED BY THE CONTRACTOR WILL BE ON THE SITE AT ALL TIMES.
3. TO THE MAXIMUM EXTENT POSSIBLE, ALL FLOWS ORIGINATING OFF THE CONSTRUCTION SITE WILL BE DIVERTED AROUND DISTURBED AREAS OR WILL BE CONVEYED THROUGH THE SITE IN A MANNER THAT UNTREATED ON-SITE RUNOFF DOES NOT MIX WITH THE OFF-SITE RUNOFF.
4. ALL RUNOFF ORIGINATING ON DISTURBED AREAS ASSOCIATED WITH THIS PROJECT WILL PASS THROUGH ONE OR MORE MEASURES THAT WILL MINIMIZE OFF-SITE SEDIMENT IMPACTS OF THE CONSTRUCTION ACTIVITY.
5. DISTURBED AREAS ARE TO BE PROTECTED FROM EROSION IN A TIMELY MANNER. UPON COMPLETION OF GRADING OR CONSTRUCTION, THE AREA WILL BE STABILIZED USING PERMANENT MEASURES.
6. THE CONTRACTOR SHALL DESIGNATE ONE OF HIS EMPLOYEES AS RESPONSIBLE FOR IMPLEMENTATION OF THE EROSION AND SEDIMENT CONTROL PLAN ON ALL DISTURBED AREAS. THIS PERSON IS TO BE KNOWLEDGEABLE ABOUT THE INSTALLATION AND MAINTENANCE OF THE REQUIRED MEASURES. THIS EMPLOYEE IS TO HAVE THE AUTHORITY TO CARRY OUT THE IMPLEMENTATION OF ANY INSTRUCTIONS CONCERNING THE EROSION AND SEDIMENT CONTROL PLAN GIVEN BY THE ENGINEER. ALL MEASURES WILL BE INSPECTED BY THE INDIVIDUAL AND THE ENGINEER ON A REGULAR BASIS (AT LEAST ONCE EVERY SEVEN DAYS) AND AFTER RAINFALL EVENTS GREATER THAN 1/2 INCH.
7. THE CONTRACTOR SHALL REMOVE ALL EXCAVATED MATERIAL FOR THE CONSTRUCTION OF THE 3 FT HMA SHOULDERS FROM THE JOB SITE UNLESS DIRECTED BY THE RESIDENT ENGINEER.
8. THE CONTRACTOR SHALL REPLACE THE MATERIAL REMOVED FOR THE CONSTRUCTION OF THE 3 FT HMA SHOULDERS WITH THE FIRST LIFT OF THE HMA SHOULDER WITHIN THE SAME DAY TO PREVENT SEDIMENT EROSION.
9. THE EXCAVATED MATERIAL FROM THE CONSTRUCTION OF THE 3 FT HMA SHOULDERS SHALL NOT BE DEPOSITED ON THE SHOULDER UNLESS DIRECTED BY THE RESIDENT ENGINEER.



TYPICAL EROSION CONTROL SECTION

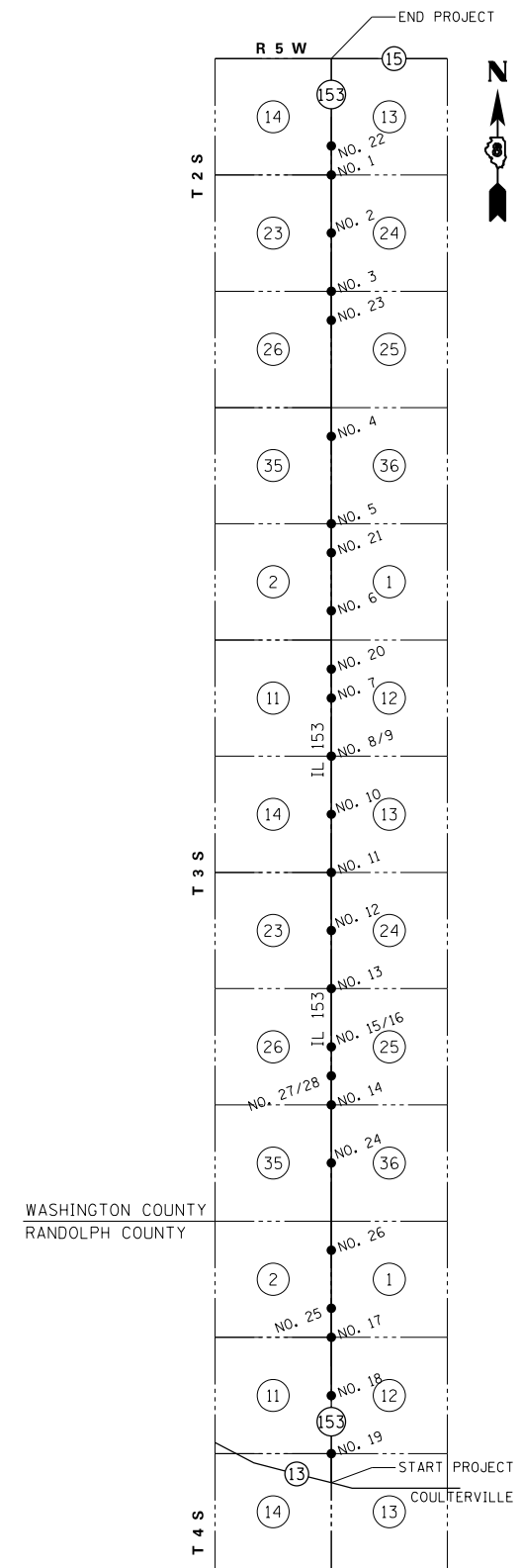
- MS 0.076 TO MS 0.213
- MS 0.244 TO MS 1.340*
- MS 1.340 TO MS 1.360**
- MS 1.360 TO MS 3.140
- MS 3.290 TO MS 4.280
- MS 4.400 TO MS 5.460
- MS 5.560 TO MS 12.133

*LT. SHOULDER OMISSION MS 0.244 TO MS 0.275
 **RT. SHOULDER OMISSION

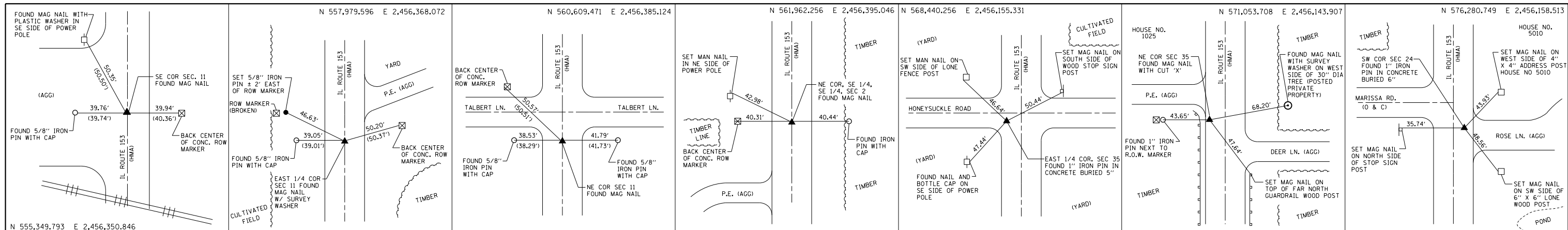
FILE NAME =	USER NAME = default	DESIGNED -	REVISED -	STATE OF ILLINOIS DEPARTMENT OF TRANSPORTATION	EROSION AND SEDIMENT CONTROL IL ROUTE 153			F.A.S. RTE.	SECTION	COUNTY	TOTAL SHEETS	SHEET NO.
P:\Projects\634400 - PTB 176-19 DB Ver	1 and 11\634402 - WD 1\CADD\CADD Sheets\DWG	DRAWN	REVISED -					1833	(106, 107) RS-2	RANDOLPH / WASHINGTON	21	19
\$MODELNAME\$	PLOT SCALE = 100.0000' / in.	CHECKED -	REVISED -		CONTRACT NO. 76K37			ILLINOIS FED. AID PROJECT				
	PLOT DATE = 1/9/2020	DATE -	REVISED -		SCALE: N/A	SHEET 1 OF 1 SHEETS	STA. N/A TO STA. N/A					

SECTION CORNER COORDINATE TABLE				
POINT NO.	NORTH	EAST	DESCRIPTION	CORNER
NO. 1	613,484.254	2,455,788.056	1" IRON PIN IN CONCRETE BURIED 6"	E. 1/4 COR SEC 14, T. 2 S., R. 5 W.
NO. 2	610,850.813	2,455,796.401	1" IRON PIN IN CONCRETE BURIED 5"	E. 1/4 COR SEC 23, T. 2 S., R. 5 W.
NO. 3	608,182.867	2,455,806.616	1" IRON PIN IN CONCRETE BURIED 5"	S.E. COR SEC 23, T. 2 S., R. 5 W.
NO. 4	601,538.909	2,455,827.990	BRASS PLUG	S.E. COR N.E. 1/4, N.E. 1/4, SEC 35, T. 2 S., R. 5 W.
NO. 5	597,543.850	2,455,837.011	NAIL WITH CUT 'X'	N.E. COR SEC 2, T. 3 S., R. 5 W.
NO. 6	593,586.394	2,455,912.346	1" IRON PIN IN CONCRETE BURIED 4"	N.E. COR S.E. 1/4, S.E. 1/4, SEC 2, T. 3 S., R. 5 W.
NO. 8	586,953.869	2,455,974.550	MAG NAIL	N.E. COR SEC 14, T. 3 S., R. 5 W.
NO. 9	586,923.873	2,455,974.961	NAIL WITH CUT 'X'	N.E. COR SEC 14, T. 3 S., R. 5 W.
NO. 10	584,327.486	2,456,014.200	NAIL WITH CUT 'X'	E. 1/4 COR SEC 14, T. 3 S., R. 5 W.
NO. 11	581,655.406	2,456,054.556	1" IRON PIN IN CONCRETE BURIED 5"	N.E. COR SEC 23, T. 3 S., R. 5 W.
NO.12	578,997.780	2,456,105.965	MAG NAIL WITH CUT 'X'	E. 1/4 COR SEC 23, T. 3 S., R. 5 W.
NO. 13	576,280.749	2,456,158.513	1" IRON PIN IN CONCRETE BURIED 6"	S.W. COR SEC 24, T. 3 S., R. 5 W.
NO. 14	571,053.708	2,456,143.907	MAG NAIL WITH CUT 'X'	N.E. COR SEC 35, T. 3 S., R. 5 W.
NO. 15	573,679.375	2,456,152.766	1" IRON PIN IN CONCRETE	E. 1/4 COR SEC 26, T. 3 S., R. 5 W.
NO. 16	573,675.608	2,456,151.802	MAG NAIL	E. 1/4 COR SEC 26, T. 3 S., R. 5 W.
NO. 17	560,609.471	2,456,385.124	MAG NAIL	N.E. COR SEC 11, T. 4 S., R. 5 W.
NO. 18	557,979.596	2,456,368.072	MAG NAIL W/ SURVEY WASHER	E. 1/4 COR SEC 11, T. 4 S., R. 5 W.
NO. 19	555,349.730	2,456,350.846	MAG NAIL	S.E. COR SEC 11, T. 4 S., R. 5 W.
NO. 21	596,229.596	2,455,868.033	1" IRON PIN IN CONCRETE BURIED 4"	S.E. COR N.E. 1/4, N.E. 1/4, SEC 2, T. 3 S., R. 5 W.
NO. 22	614,811.571	2,455,780.056	1" IRON PIN IN CONCRETE BURIED 6"	N.E. COR S.E. 1/4, S.E. 1/4, SEC 14, T. 2 S., R. 5 W.
NO. 23	606,853.730	2,455,810.876	1" IRON PIN IN CONCRETE BURIED 5"	S.E. COR N.E. 1/4, N.E. 1/4, SEC 26, T. 2 S., R. 5 W.
NO. 24	568,440.256	2,456,155.331	1" IRON PIN IN CONCRETE BURIED 5"	E. 1/4 COR SEC 35, T. 3 S., R. 5 W.
NO. 25	561,962.256	2,456,395.046	MAG NAIL	N.E. COR S.E. 1/4, SEC 2, T. 4 S., R. 5 W.

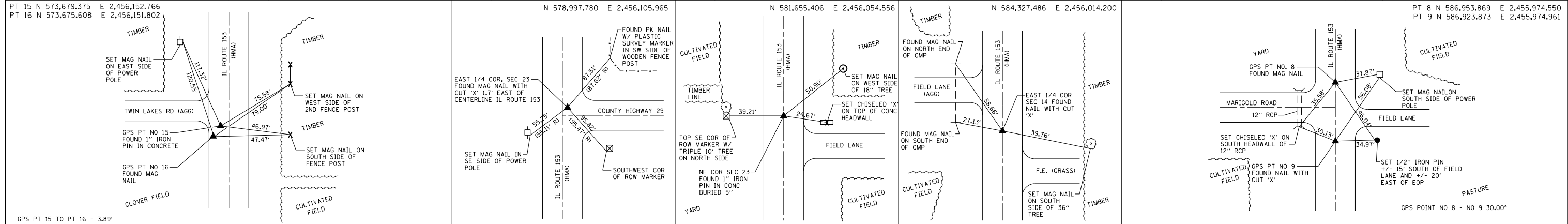
MONUMENT POINT NO.'S 7, 20, 26, 27, 28, FALL OFF ROADWAY (NO CROSS TIES)



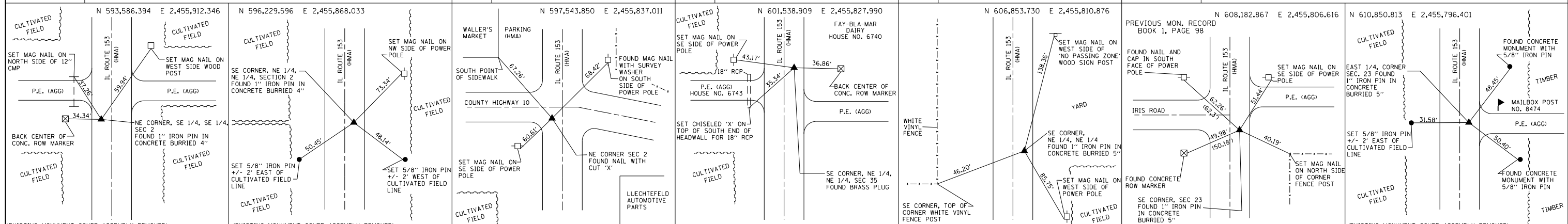
CONTROL POINT/SECTION CORNER MAP
NOT TO SCALE



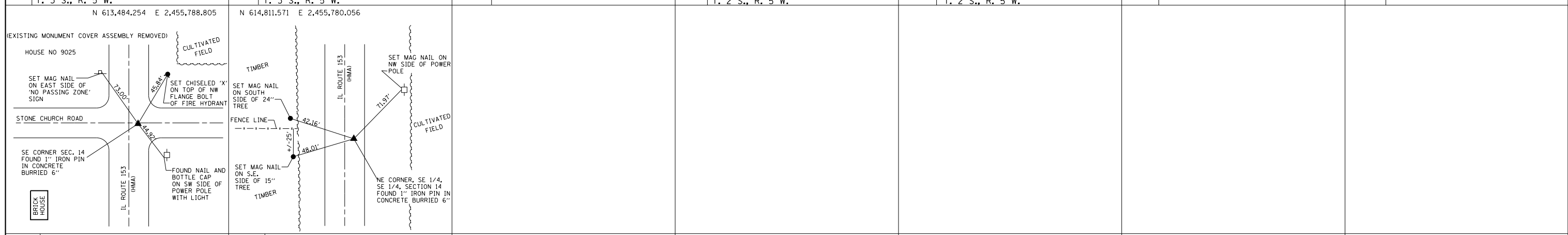
PT 19 | S.E. COR SEC 11, T. 4 S., R. 5 W. | PT 18 | E. 1/4 COR SEC 11, T. 4 S., R. 5 W. | PT 17 | N.E. COR SEC 11, T. 4 S., R. 5 W. | PT 25 | N.E. COR S.E. 1/4, S.E. 1/4, SEC 2, T. 4 S., R. 5 W. | PT 24 | E. 1/4 COR SEC 35, T. 3 S., R. 5 W. | PT 14 | N.E. COR SEC 35, T. 3 S., R. 5 W. | PT 13 | S.W. COR SEC 24, T. 3 S., R. 5 W.



PT 15 & PT 16 | E. 1/4 COR SEC 26, T. 3 S., R. 5 W. | PT 12 | E. 1/4 COR SEC 23, T. 3 S., R. 5 W. | PT 11 | N.E. COR SEC 23, T. 3 S., R. 5 W. | PT 10 | E. 1/4 COR SEC 14, T. 3 S., R. 5 W. | PT 8 & PT 9 | N.E. COR SEC 14, T. 3 S., R. 5 W.



PT 6 | N.E. COR S.E. 1/4, S.E. 1/4, SEC 2, T. 3 S., R. 5 W. | PT 21 | S.E. COR N.E. 1/4, N.E. 1/4, SEC 2, T. 3 S., R. 5 W. | PT 5 | N.E. COR SEC 2, T. 3 S., R. 5 W. | PT 4 | S.E. COR N.E. 1/4, N.E. 1/4, SEC 35, T. 2 S., R. 5 W. | PT 23 | S.E. COR N.E. 1/4, N.E. 1/4, SEC 26, T. 2 S., R. 5 W. | PT 3 | S.E. COR SEC 23, T. 2 S., R. 5 W. | PT 2 | E. 1/4 COR SEC 23, T. 2 S., R. 5 W.



PT 1 | E. 1/4 COR SEC 14, T. 2 S., R. 5 W. | PT 22 | N.E. COR S.E. 1/4, S.E. 1/4, SEC 14, T. 2 S., R. 5 W.

FILE NAME =	USER NAME = default	DESIGNED -	REVISED -
P:\Projects\634400 - PTB 176-19 DB Var	P:\I and II\634402 - WO\CAD\CADD Sheets\DWG	DRAWN -	REVISED -
	PLOT SCALE = 40.0000' / in.	CHECKED -	REVISED -
MODELNAME	PLOT DATE = 1/9/2020	DATE -	REVISED -

**STATE OF ILLINOIS
DEPARTMENT OF TRANSPORTATION**

**SURVEY MONUMENTS
IL 153**

SCALE: N/A SHEET 2 OF 2 SHEETS STA. N/A TO STA. N/A

F.A.S. RTE.	SECTION	COUNTY	TOTAL SHEETS	SHEET NO.
1833	(106, 107) R5-2	RANDOLPH / WASHINGTON	21	21
CONTRACT NO. 76K37				
ILLINOIS FED. AID PROJECT				