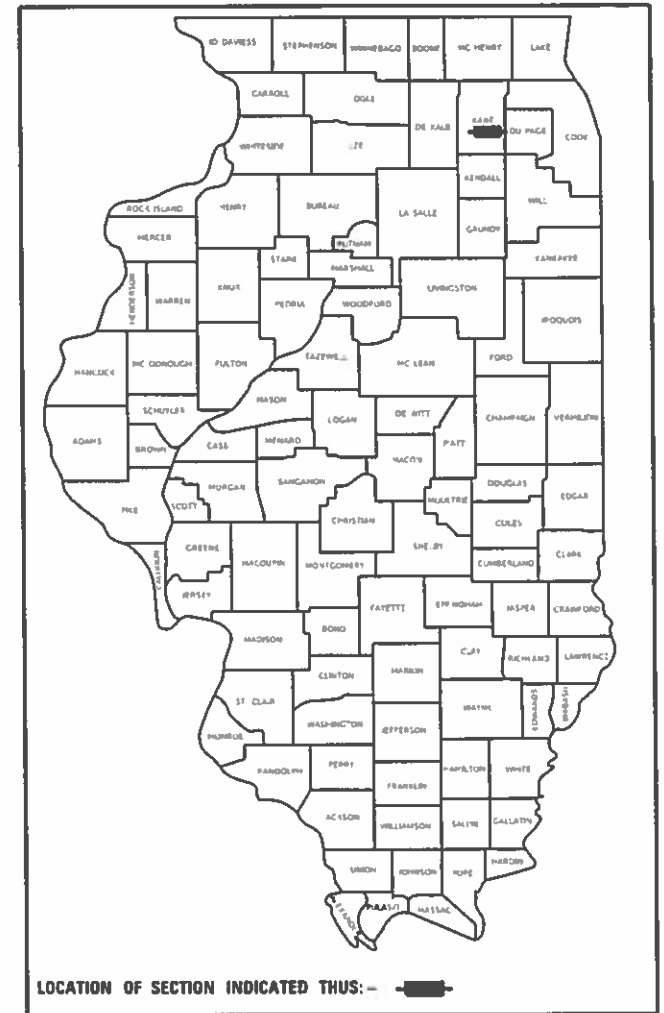


STATE OF ILLINOIS
DEPARTMENT OF TRANSPORTATION

FAP RTE	SECTION	COUNTY	TOTAL SHEETS	SHEET NO.
347	2019-057-BR	KANE	24	1
		ILLINOIS	CONTRACT NO. 62J34	

D-91-184-19



FOR INDEX OF SHEETS, SEE SHEET NO. 2

PROJECT LOCATED IN THE CITY OF GENEVA

PROPOSED HIGHWAY PLANS

FAP ROUTE 347: IL-38 (STATE ST.)
OVER FOX RIVER
SECTION: 2019-057-BR
PROJECT: NHPP-2CUE(153)
BRIDGE REPAIR, BRIDGE JOINT REPAIR, BRIDGE DECK OVERLAY
KANE COUNTY

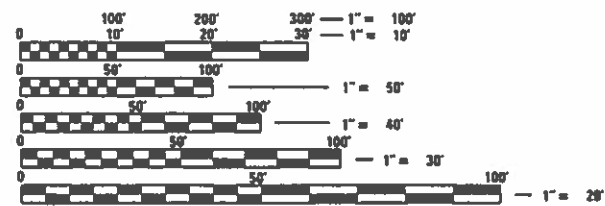
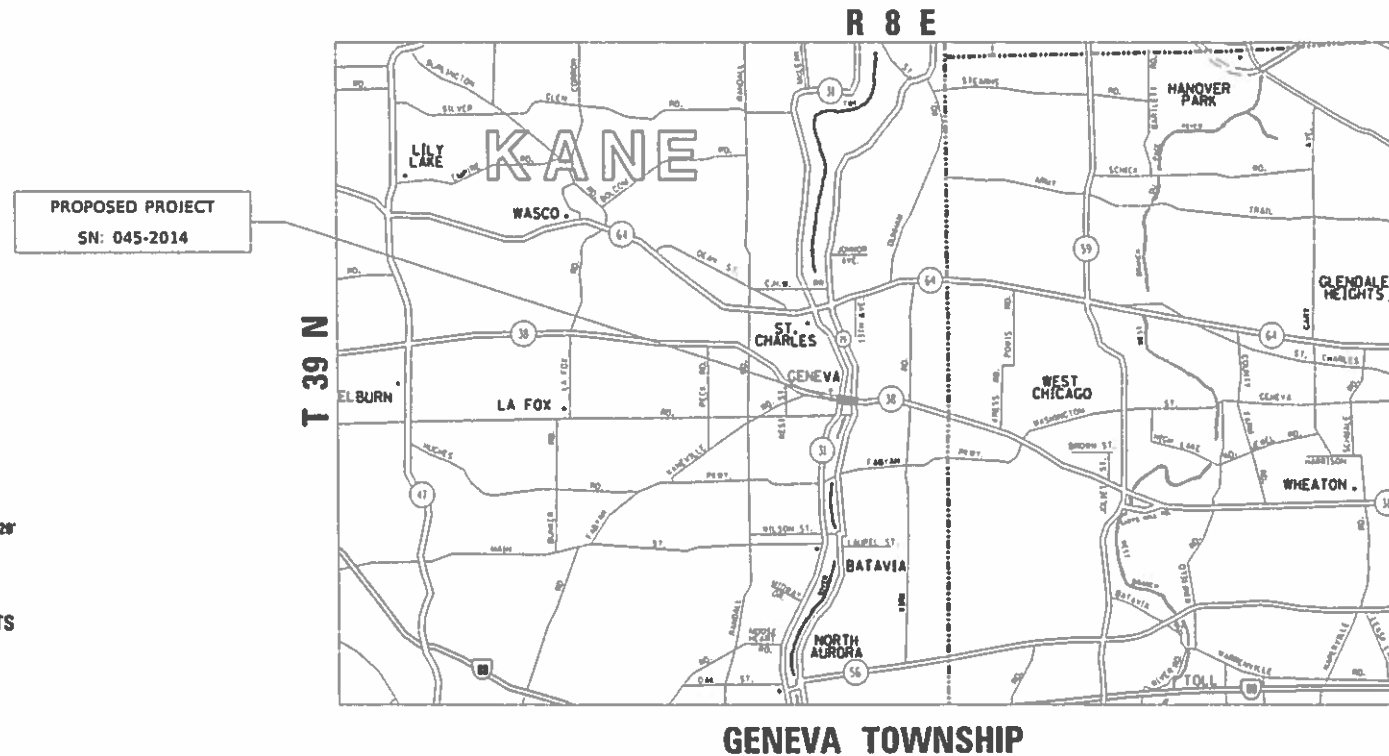
C-91-418-19

TRAFFIC DATA

2017 ADT
IL-38 (STATE ST.) = 27,900 ADT

POSTED SPEED LIMIT

IL-38 (STATE ST.) = 30 MPH



FULL SIZE PLANS HAVE BEEN PREPARED USING STANDARD ENGINEERING SCALES. REDUCED SIZED PLANS WILL NOT CONFORM TO STANDARD SCALES. IN MAKING MEASUREMENTS ON REDUCED PLANS, THE ABOVE SCALES MAY BE USED.

J.U.L.I.E.
JOINT UTILITY LOCATION INFORMATION FOR EXCAVATORS
1-800-892-0123
OR 811

PROJECT ENGINEER: J. ALAIN MIDY (847)221-3056
PROJECT MANAGER: FAWAD AQUEEL (847)705-4247

GROSS LENGTH = NET LENGTH = 390 FT. = 0.074 MILE

CONTRACT NO. 62J34

STATE OF ILLINOIS
DEPARTMENT OF TRANSPORTATION

SUBMITTED December 16, 2019

Anthony J. Smyth REGIONAL ENGINEER

Jan 31, 2020

[Signature]
ENGINEER OF DESIGN AND ENVIRONMENT

Jan 31, 2020

[Signature]
DIRECTOR OF HIGHWAYS PROJECT IMPLEMENTATION

PRINTED BY THE AUTHORITY OF THE STATE OF ILLINOIS

INDEX OF SHEETS

SHEET NO.	DESCRIPTION
1	COVER SHEET
2	INDEX OF SHEETS, STATE STANDARDS AND GENERAL NOTES
3-4	SUMMARY OF QUANTITIES
5	GENERAL PLAN AND ELEVATION
6	STAGING PLAN
7	EXPANSION JOINT REMOVAL DETAILS
8	BRIDGE DECK OVERLAY AND PATCHING DETAILS
9	EXPANSION JOINT REPLACEMENT DETAILS
10	PREFORMED JOINT STRIP SEAL
11	BAR SPLICER ASSEMBLY AND MECHANICAL SPLICER DETAILS
12	PREFORMED JOINT SEAL AT ABUTMENTS DETAILS
13	PREFORMED JOINT SEAL AT LOOKOUTS, PIERS 2 & 3 DETAILS
14	PEDESTRIAN RAILING REPAIR DETAILS
15	BEARING DETAILS (FOR INFORMATION ONLY)
16-17	MAINTENANCE OF TRAFFIC, STAGE 1
18-19	MAINTENANCE OF TRAFFIC, STAGE 2
20	PAVEMENT MARKING DETAILS
21	TRAFFIC CONTROL AND PROTECTION FOR SIDEROADS, INTERSECTIONS AND DRIVEWAYS (TC-10)
22	DISTRICT ONE TYPICAL PAVEMENT MARKINGS (TC-13)
23	TRAFFIC CONTROL AND PROTECTION AT TURNBAYS (TC-14)
24	ARTERIAL ROAD INFORMATION SIGN (TC-22)

STATE STANDARDS

STANDARD NO.	DESCRIPTION
701101-05	OFF-ROAD OPERATIONS, MULTILANE, 15' (4.5M) TO 24' (600 MM) FROM PAVEMENT EDGE
701427-05	LANE CLOSURE, MULTILANE, INTERMITTEN OR MOVING OPERATION, FOR SPEEDS ≤ 40 MPH
701606-10	URBAN SINGLE LANE CLOSURE MULTILANE, 2W WITH MOUNTABLE MEDIAN
701701-10	URBAN LANE CLOSURE, MULTILANE INTERSECTION
701801-06	SIDEWALK, CORNER OR COSSWALK CLOSURE
701901-08	TRAFFIC CONTROL DEVICES

GENERAL NOTES - ROADWAY

- BEFORE STARTING ANY EXCAVATION, THE CONTRACTOR SHALL CALL "J.U.L.I.E." AT (800) 892-0123 FOR FIELD LOCATIONS OF BURIED ELECTRIC, TELEPHONE AND GAS UTILITIES. (48 HOUR NOTIFICATION IS REQUIRED.)
- THE CONTRACTOR SHALL COORDINATE CONSTRUCTION ACTIVITIES WITH UTILITY COMPANIES, AND THE CITY OF GENEVA.
- THE CONTRACTOR WILL NOT BE ALLOWED TO SET UP A YARD OR FIELD OFFICE ON STATE PROPERTY WITHOUT WRITTEN PERMISSION FROM THE DEPARTMENT.
- ALL DAMAGE TO EXISTING PAVEMENT MARKING OR RAISED REFLECTIVE PAVEMENT MARKERS OUTSIDE THE REMOVAL LINE SHOWN ON THE PLANS SHALL BE REPLACED AT THE CONTRACTORS EXPENSE.
- THE CONTRACTOR SHALL CONTACT THE DISTRICT ONE TRAFFIC CONTROL SUPERVISOR AT (847) 705-4470 A MINIMUM OF 72 HOURS IN ADVANCE OF BEGINNING WORK.
- BEFORE BEGINNING ANY WORK, THE CONTRACTOR SHALL RETAIN AND RECORD (FOR FUTURE REFERENCES), ALL EXISTING PAVEMENT MARKING LINES AND RAISED REFLECTIVE PAVEMENT MARKERS IN ORDER THAT THESE LOCATIONS CAN BE RE- ESTABLISHED FOR STRIPING. EXACT LOCATIONS OF ALL STRIPING SHALL BE AS DIRECTED BY THE ENGINEER.
- THE ENGINEER SHALL CONTACT DON CHIARUGI, IDOT'S AREA TRAFFIC FIELD ENGINEER. VIA EMAIL AT DON.CHIARUGI@ILLINOIS.GOV OR AT (847) 741-9857 A MINIMUM OF TWO WEEKS PRIOR TO PLACEMENT OF PERMANENT PAVEMENT MARKINGS.
- DO NOT SCALE PLANS FOR CONSTRUCTION DIMENSIONS.
- THESE PLANS HAVE BEEN PREPARED FROM NOTES RECEIVED FROM DISTRICT 1 BUREAU OF MAINTENANCE BRIDGE INSPECTIONS.
- PLAN DIMENSIONS AND DETAILS RELATIVE TO EXISTING PLANS ARE SUBJECT TO ROUTINE VARIATION. THE CONTRACTOR SHALL FIELD VERIFY EXISTING DIMENSIONS AND DETAILS AFFECTING NEW CONSTRUCTION OR ORDERING MATERIALS. SUCH VARIATION SHALL NOT CAUSE FOR ADDITIONAL COMPENSATION FOR A CHANGE IN THE SCOPE OF THE WORK, HOWEVER, THE CONTRACTOR WILL BE PAID FOR QUANTITY ACTUALLY FURNISHED BASED AT THE UNIT PRICE BID FOR THE WORK.
- THE CONTRACTOR SHALL ENSURE THAT NONE OF THE LOSE DEBRIS IS GOING IN TO THE FOX RIVER.

GENERAL PAINT NOTES

CLEANING AND PAINTING OF THE EXISTING STRUCTURAL STEEL SHALL BE AS SPECIFIED IN THE SPECIAL PROVISION FOR "CLEANING AND PAINTING EXISTING STEEL STRUCTURES".

ALL BEARINGS SHALL BE CLEANED PER NEAR WHITE BLAST CLEANING SSPC-SP10. THE STEEL AREAS SHALL BE PAINTED ACCORDING TO THE REQUIREMENTS OF PAINT SYSTEM 1-OZ/E/U. THE COLOR OF THE FINAL FINISH COAT SHALL BE GRAY, MUNSELL NO 5B 7/1.

MODEL: Default
 FILE NAME: p:\p\planroom.dwg
 ILLINOIS.GOV\PIV\DOT\Documents\DOT_Offices\District_1\Projects\118419\CADDData\Design\118419_sht-general.dgn

REV. - MS

USER NAME = senadeeraai	DESIGNED -	REVISED -	STATE OF ILLINOIS DEPARTMENT OF TRANSPORTATION	IL-38 (STATE ST.) OVER FOX RIVER		F.A.P. RTE.	SECTION	COUNTY	TOTAL SHEETS	SHEET NO.	
	DRAWN -	REVISED -		INDEX OF SHEETS, STATE STANDARDS AND GENERAL NOTES		347	2019-057-19	KANE	24	2	
PLOT SCALE = 100.0000' / in.	CHECKED -	REVISED -		SCALE:	SHEET	OF	SHEETS	STA.	TO	STA.	ILLINOIS FED. AID PROJECT
PLOT DATE = 12/13/2019	DATE -	REVISED -		CONTRACT NO. 62J34							

URBAN

URBAN

SUMMARY OF QUANTITIES			TOTAL QUANTITIES	CONSTRUCTION TYPE CODE					
CODE NO	ITEM	UNIT		80% FED 20% STATE 0013					
42001300	PROTECTIVE COAT	SO YD	38	38					
44200050	WELDED WIRE REINFORCEMENT	SO YD	220	220					
44200970	CLASS B PATCHES, TYPE II, 10 INCH	SO YD	43	43					
44200974	CLASS B PATCHES, TYPE III, 10 INCH	SO YD	112	112					
44200976	CLASS B PATCHES, TYPE IV, 10 INCH	SO YD	108	108					
44201299	DOWEL BARS 1 1/2"	EACH	300	300					
44213200	SAW CUTS	FOOT	1100	1100					
44213204	TIE BARS 3/4"	EACH	42	42					
50102400	CONCRETE REMOVAL	CU YD	6.3	6.3					
50300255	CONCRETE SUPERSTRUCTURE	CU YD	7.7	7.7					
50300300	PROTECTIVE COAT	SQ YD	38	38					
50606701	CLEANING AND PAINTING STRUCTURAL STEEL, LOCATION 1	L SUM	1	1					
50800205	REINFORCEMENT BARS, EPOXY COATED	POUND	1770	1770					
50800515	BAR SPLICERS	EACH	16	16					
52000030	PREFORMED JOINT SEAL 2 1/2"	FOOT	204	204					

SUMMARY OF QUANTITIES			TOTAL QUANTITIES	CONSTRUCTION TYPE CODE					
CODE NO	ITEM	UNIT		80% FED 20% STATE 0013					
52000110	PREFORMED JOINT STRIP SEAL	FOOT	150	150					
52100500	ANCHOR BOLTS, 1/2"	EACH	32	32					
67000400	ENGINEER'S FIELD OFFICE, TYPE A	CAL MO	6	6					
67100100	MOBILIZATION	L SUM	1	1					
70107025	CHANGEABLE MESSAGE SIGN	CAL DA	90	90					
70300904	PAVEMENT MARKING TAPE, TYPE IV 4"	FOOT	5835	5835					
* 78009004	MODIFIED URETHANE PAVEMENT MARKING - LINE 4"	FOOT	3300	3300					
* 78009006	MODIFIED URETHANE PAVEMENT MARKING - LINE 6"	FOOT	420	420					
X0326766	CLEAN & RESEAL RELIEF JOINT	FOOT	160	160					
X0327980	PAVEMENT MARKING REMOVAL - WATER BLASTING	SO FT	1310	1310					
X5870015	BRIDGE DECK CONCRETE SEALER	SO FT	7800	7800					
X7010216	TRAFFIC CONTROL AND PROTECTION, (SPECIAL)	L SUM	1	1					
X7030005	TEMPORARY PAVEMENT MARKING REMOVAL	SO FT	1945	1945					

REV. - MS

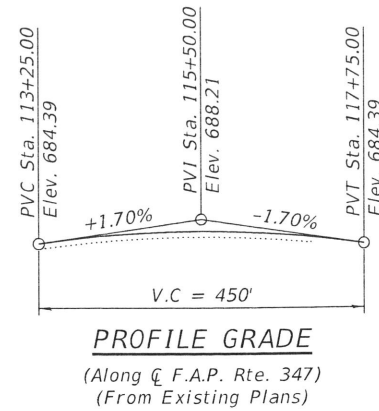
* - SPECIALTY ITEMS

Benchmark: BM #1: Standard Illinois Division of Waterway survey desk in wingwall at East end of the Geneva Dam ±350 feet North of Il. Rte. 38 on East side of Fox River at Elev. 682.91.

Existing Structure: S.N. 045-2014 was originally built in 1991 as F.A.P. 347, Section 11B-R-1(87) to replace S.N. 045-0010 built in 1909. The back-to-back abutment length is 367'-10" and the existing out-to-out deck width is 76'-8". The structure consists of a 5-span concrete deck on a prestressed concrete I-girder superstructure supported by concrete vaulted abutments and concrete footing supported piers with solid walls. Expansion joints at Pier 1 & Pier 4 to be removed and replaced.

Traffic Control: Existing joints will be removed and replaced using staged construction to maintain one lane of traffic in each direction.

Salvage: None

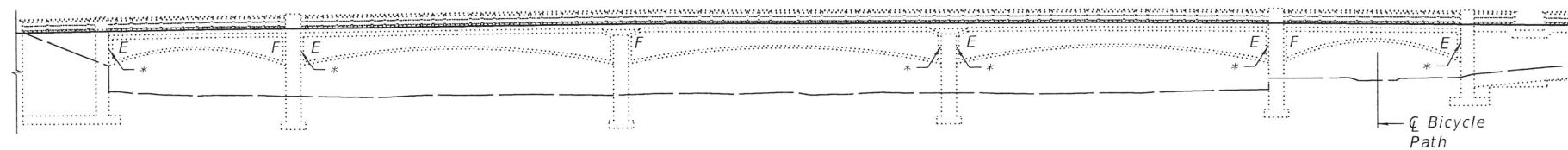


SCOPE OF WORK

1. Remove existing neoprene joints at piers 1 and 4.
2. Install strip seal joint at piers 1 and 4.
3. Clean and paint bearings and steel as shown.
4. Partial deck repair and scarify and overlay deck.
5. Replace joint seals at abutments.
6. Repair pedestrian handrail.
7. Seal deck and clean and seal relief joints.

TOTAL BILL OF MATERIAL

ITEM	UNIT	TOTAL
Protective Coat	Sq. Yd.	38
Concrete Removal	Cu. Yd.	6.3
Concrete Superstructure	Cu. Yd.	7.7
Reinforcement Bars, Epoxy Coated	Pound	1,770
Bar Splicers	Each	16
Preformed Joint Strip Seal	Foot	150
Anchor Bolts, 1/2"	Each	32
Bridge Deck Thin Polymer Overlay, 3/8"	Sq. Yd.	2576
Concrete Bridge Deck Scarification, 3/8"	Sq. Yd.	2576
Cleaning and Painting Structural Steel, Location 1	L. Sum	1
Deck Slab Repair (Partial)	Sq. Yd.	5
Preformed Joint Seal 1"	Foot	204
Bridge Deck Concrete Sealer	Sq. Ft.	7,800
Structural Repair of Concrete Depth Equal to or Less than 5 inches	Sq. Ft.	17
Clean and Reseal Relief Joints	Foot	160



ELEVATION

* Clean and paint steel portions of elastomeric bearings

INDEX OF SHEETS

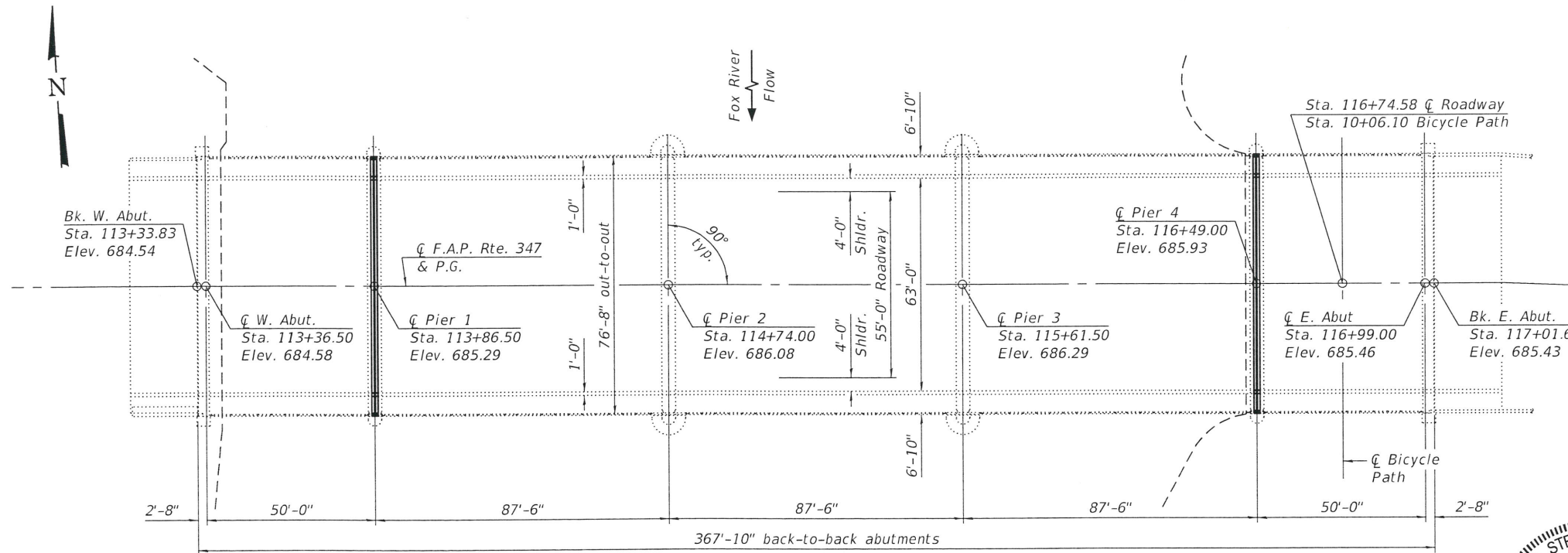
1. General Plan & Elevation
2. Staging Plan
3. Bridge Deck Overlay and Patching Details
4. Expansion Joint Removal Details
5. Expansion Joint Replacement Details
6. Preformed Joint Strip Seal
7. Bar Splicer Assembly and Mechanical Splicer Details
8. Preformed Joint Seal at East and West Abutments
9. Preformed Joint Seal at Lookouts, Piers 2 & 3
10. Pedestrian Hand Railing Repair Details
11. Bearing Details (For Information Only)

GENERAL NOTES

Reinforcement bars designated (E) shall be epoxy coated.

Plan dimensions and details relative to existing plans are subject to nominal construction variations. The Contractor shall field verify existing dimensions and details affecting new construction and make necessary approved adjustments prior to construction or ordering of materials. Such variations shall not be cause for additional compensation for a change in scope of the work, however, the Contractor will be paid for the quantity actually furnished at the unit price bid for the work.

Joint openings shall be adjusted according to Article 520.04 of the Standard Specifications when joint is poured at a temperature other than 50°F.



PLAN

DESIGN STRESSES

FIELD UNITS (New Const.)

$f'_c = 4,000$ psi (Superstructure Concrete)
 $f_y = 60,000$ psi (Reinforcement)

FIELD UNITS (Exist. Const.)

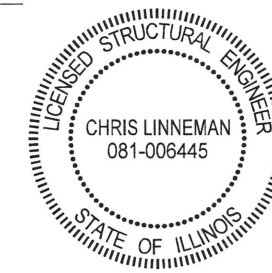
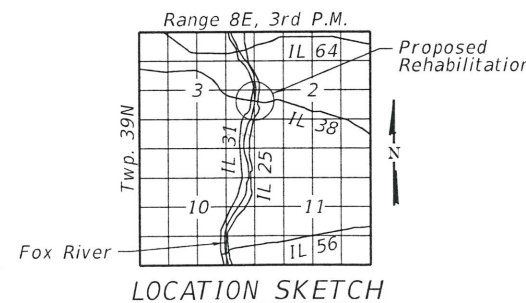
$f'_c = 3,500$ psi
 $f_y = 60,000$ psi (Reinforcement)

LOADING HS20-44

Allow 25 #/sf for future wearing surface.

DESIGN SPECIFICATIONS

2002 AASHTO Standard Specifications for Highway Bridges



Signed: *[Signature]*
 Date: 1/16/2020
 License Expires: 11/30/2020

GENERAL PLAN & ELEVATION
IL-38 OVER FOX RIVER
F.A.P. RTE. 347 - SEC. 2019-057-BR
KANE COUNTY
STATION 115+61.50
STRUCTURE NO. 045-2014

MODEL: Default
 FILE NAME: USER\SERVER1\B\Projects\SSA18039\29 IDOT D1 PTB_187-006 W029 IL 38 over Fox River Bridge Repairs\DWG\Bridges\Final\Plotsheets\045-2014-001-CPE.dgn

1/16/2020 7:35:07 AM



USER NAME =	DESIGNED - CMC	REVISED -
PLOT SCALE =	CHECKED - CDL	REVISED -
PLOT DATE =	DRAWN - CMC	REVISED -
	CHECKED -	REVISED -

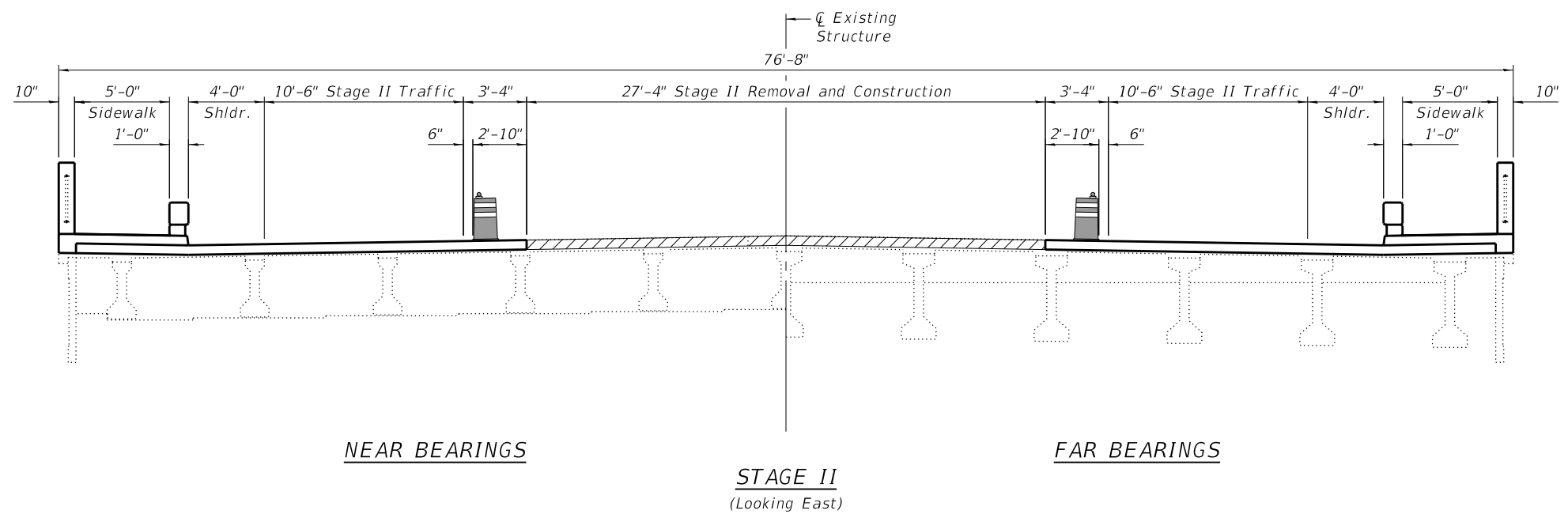
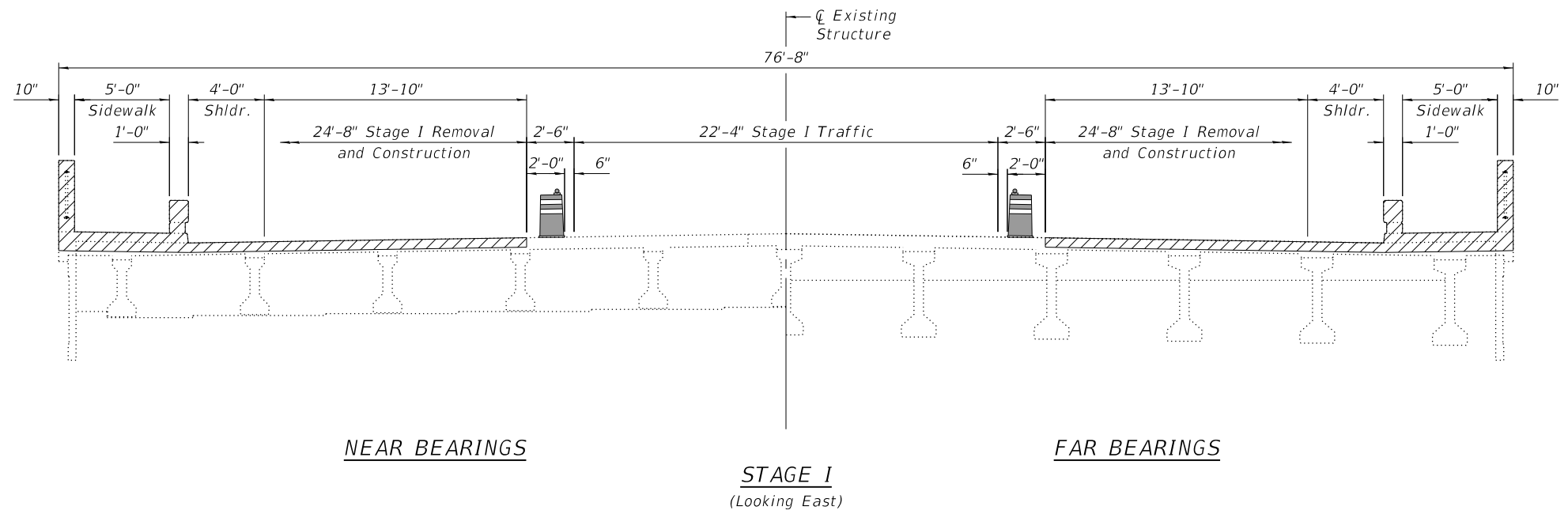
STATE OF ILLINOIS
 DEPARTMENT OF TRANSPORTATION

GENERAL PLAN AND ELEVATION
 STRUCTURE NO. 045-2014

SHEET 1 OF 11 SHEETS

F.A.P. RTE.	SECTION	COUNTY	TOTAL SHEETS	SHEET NO.
347	2019-057-BR	KANE	24	5
				CONTRACT NO. 62J34
ILLINOIS FED. AID PROJECT				

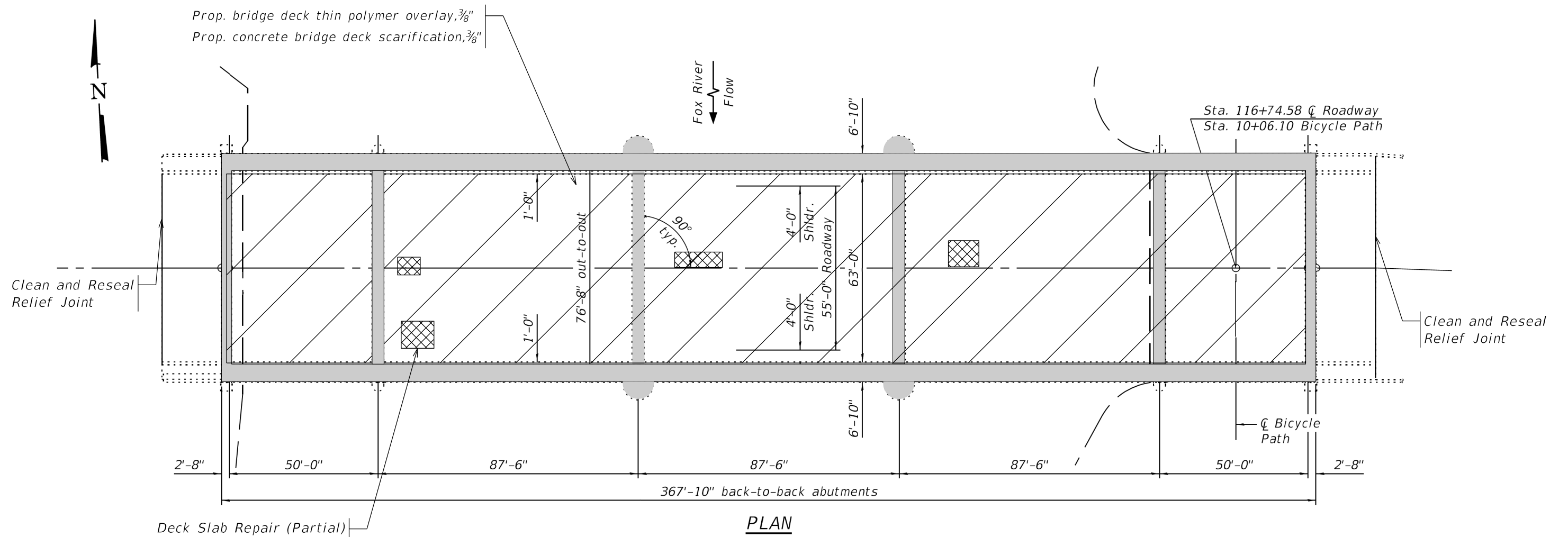
MODEL: Default
 FILE NAME: \\SERVER18\Projects\18\18039\29 IDOT D1 PTB 187-006 WO29 IL 38 over Fox River Bridge Repairs\DCN\Bridg\Final\Plotsheets\045-2014-002-Staging.dgn



USER NAME =	DESIGNED - CMC	REVISED -
	CHECKED - CDL	REVISED -
PLOT SCALE =	DRAWN - CMC	REVISED -
PLOT DATE =	CHECKED -	REVISED -

F.A.P. RTE.	SECTION	COUNTY	TOTAL SHEETS	SHEET NO.
347	2019-057-BR	KANE	24	6
CONTRACT NO. 62J34				
ILLINOIS FED. AID PROJECT				

MODEL: Default
 FILE NAME: \\SERVER18\Projects\54118039\29 IDOT D1 PTB 187-006 WO29 IL 38 over Fox River Bridge Repairs\DCN\Bridge\Final\Plotsheets\045-2014-00X-IDOT Details.dgn

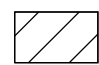






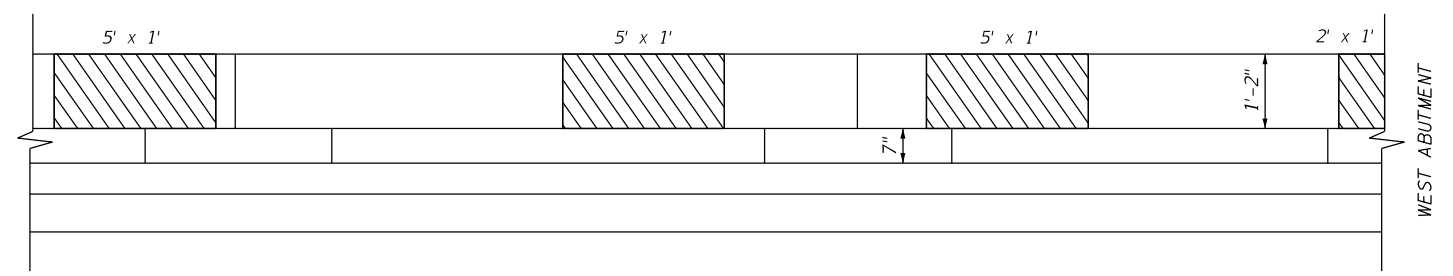
PLAN

BILL OF MATERIALS

ITEM	UNIT	TOTAL
Bridge Deck Thin Polymer Overlay, 3/8"	Sq. Yd.	2576
Concrete Bridge Deck Scarification, 3/8"	Sq. Yd.	2576
Deck Slab Repair (Partial)	Sq. Yd.	5
Bridge Deck Concrete Sealer	Sq. Ft.	7800
Structural Repair of Concrete Depth Equal to or Less than 5 inches	Sq. Ft.	17
Clean and Reseal Relief Joints	Foot	160

LEGEND

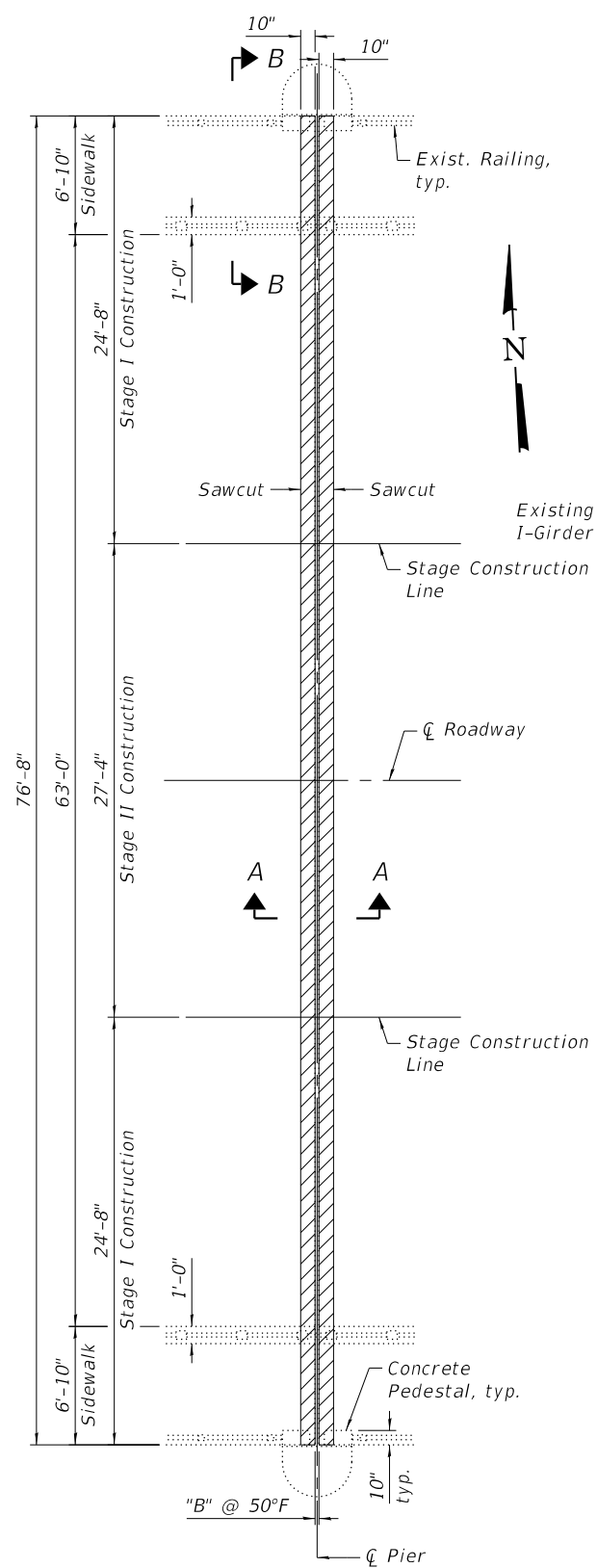
-  Bridge Deck Thin Polymer Overlay, 3/8"
-  Concrete Bridge Deck Scarification, 3/8"
-  Deck Slab Repair (Partial)
-  Bridge Deck Concrete Sealer
-  Structural Repair of Concrete Depth Equal to or Less than 5 inches



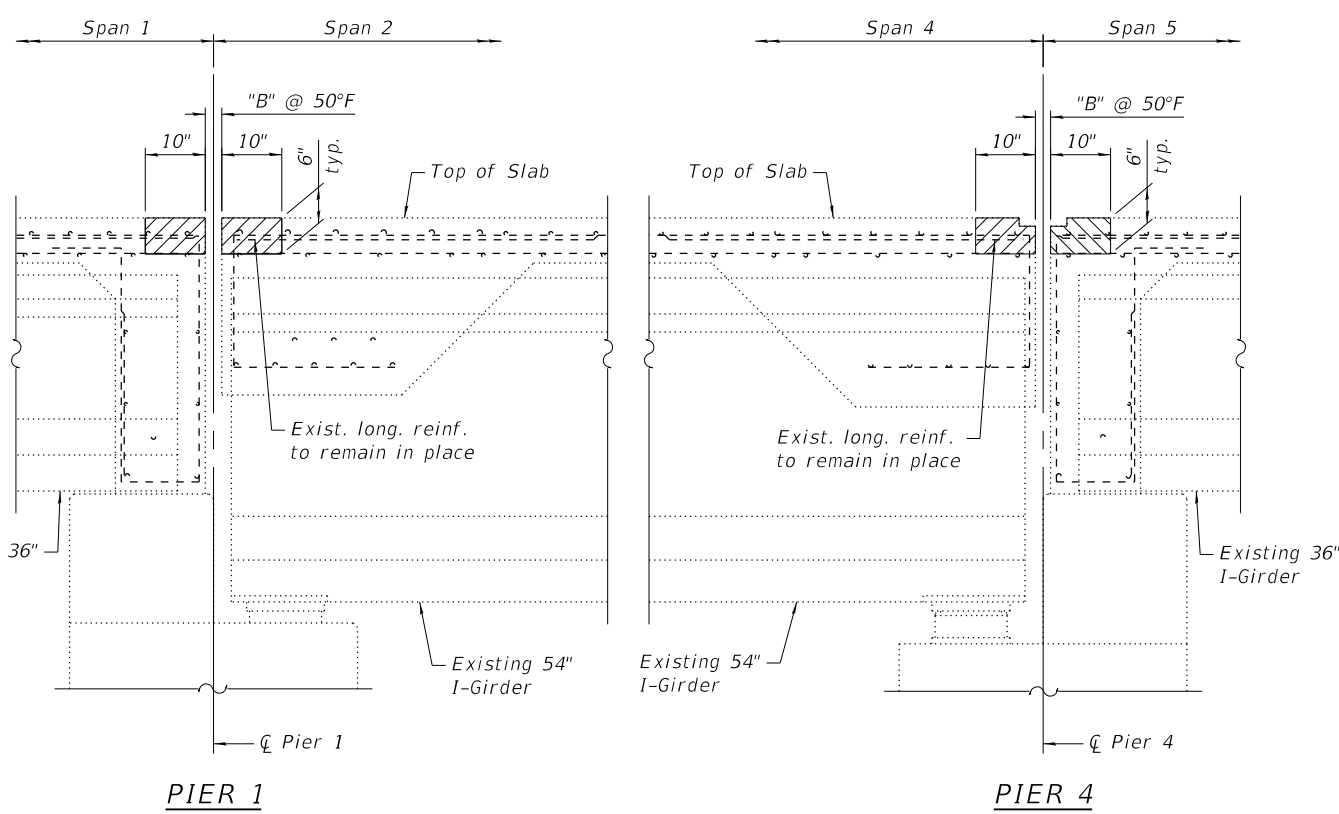
**KANSAS CORRAL RAILING STRUCTURAL REPAIR OF CONCRETE
 NW APPROACH**

Note:
 Bridge deck concrete sealer shall be applied on abutment and pier seats, top of sidewalk, front top and back of concrete railing

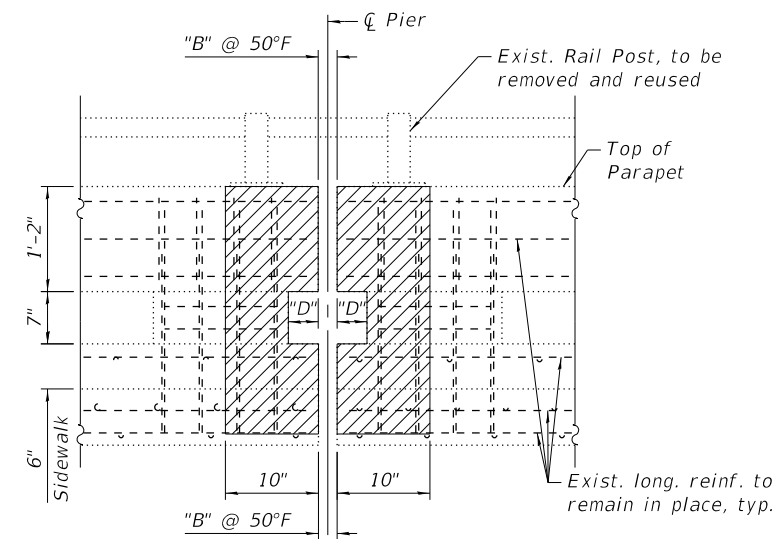
MODEL: Default
 FILE NAME: \\SERVER18\Projects\54118039\29 IDOT D1 PTB 187-006 WO29 IL 38 over Fox River Bridge Repairs\DG\NB\Bridg\Final\Plotsheets\045-2014-004-Exp-Removal.dgn



PLAN SHOWING REMOVAL
 Note: Pier 1 shown, Pier 4 similar.



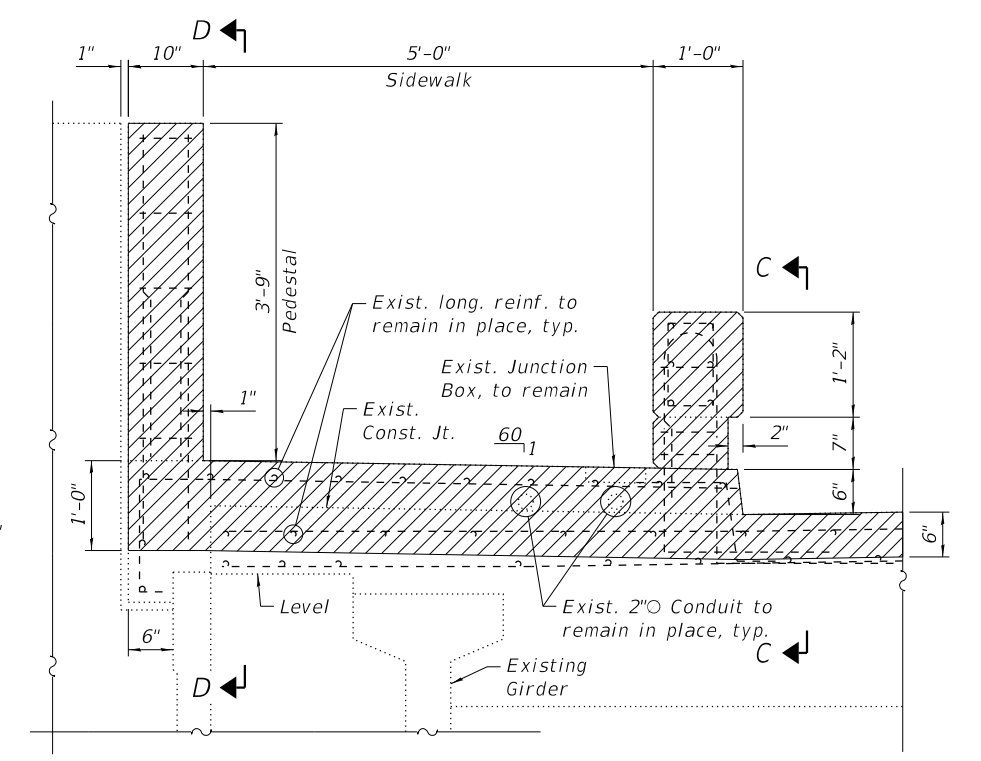
SECTION A-A



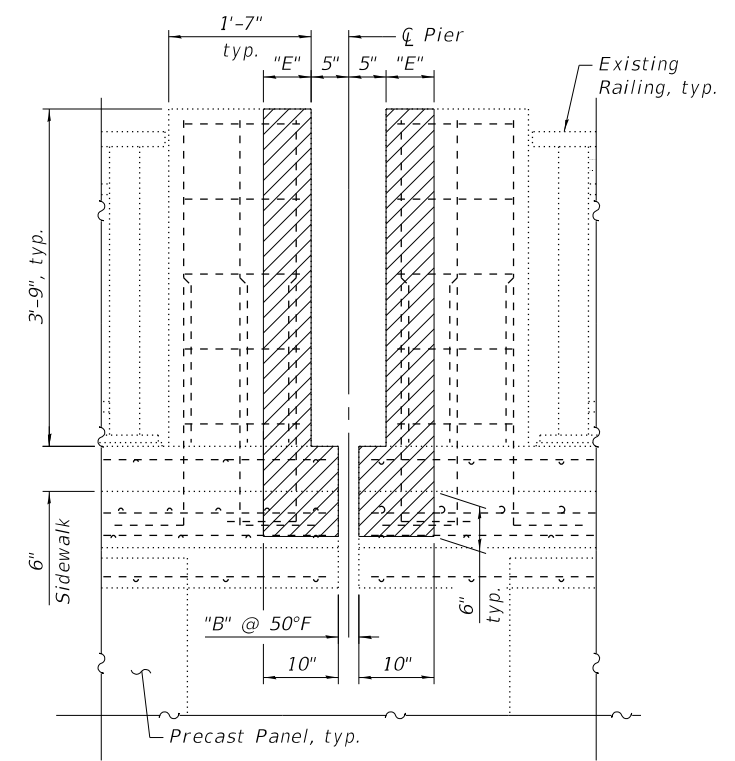
SECTION C-C

CONCRETE REMOVAL

Location	Dimension "B"	Dimension "D"	Dimension "E"	Concrete Removal (Cu. Yd.)
Pier 1	2 3/4"	0"	6 3/8"	3.2
Pier 4	2 1/2"	4"	6 1/4"	3.1



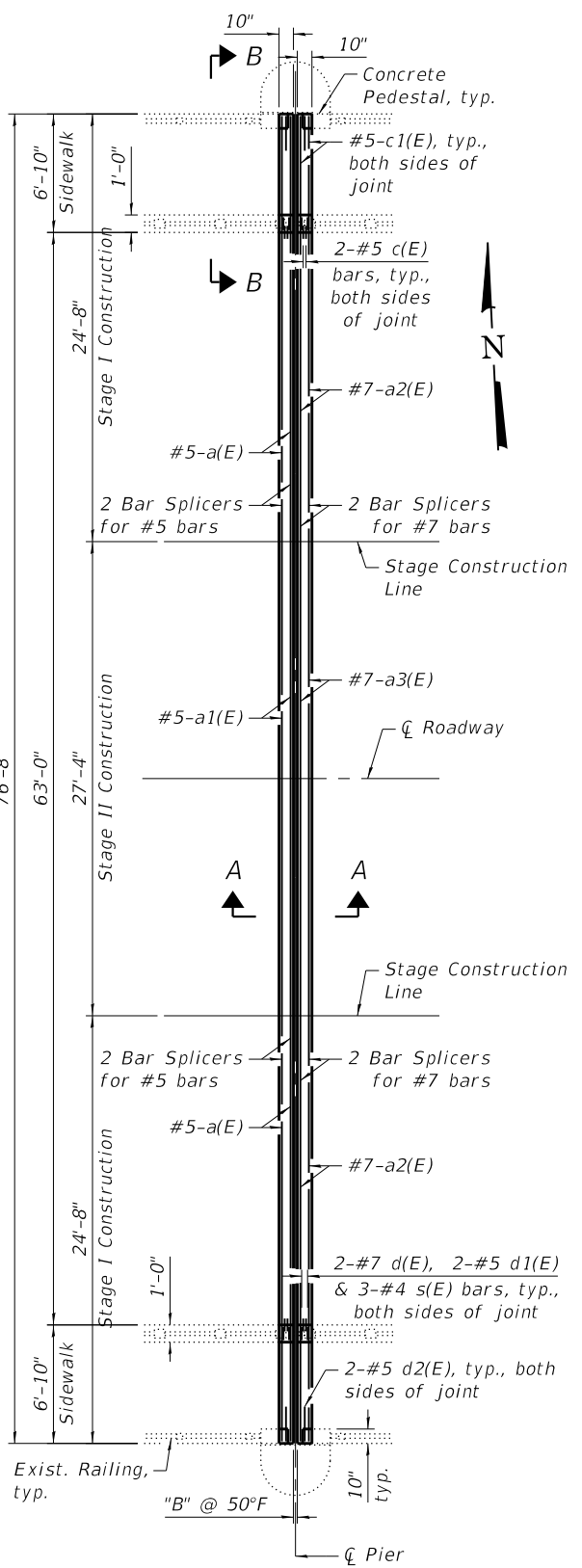
SECTION B-B
 (Far Bearings - Pier 1)
 (Near Bearings - Pier 4)



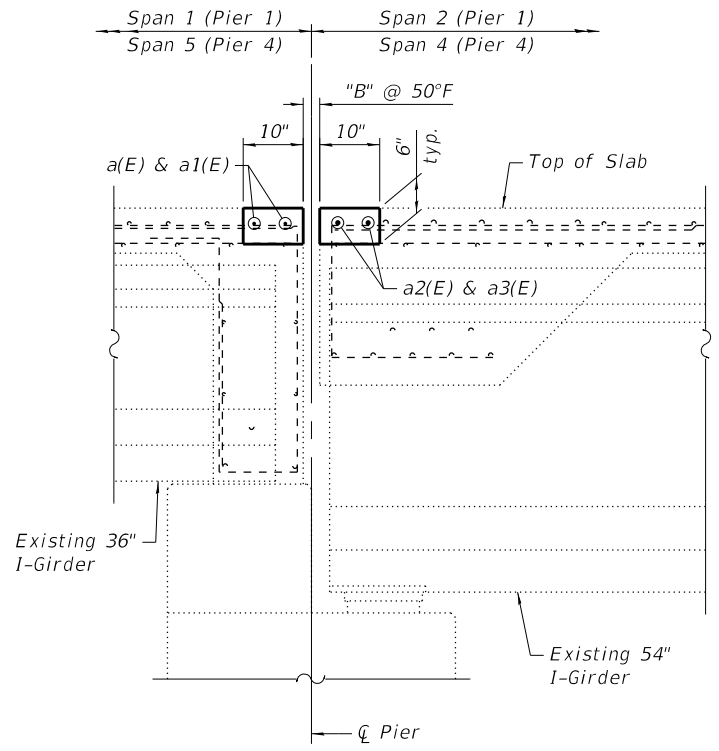
SECTION D-D

Notes:
 Hatching indicates removal
 Existing reinforcement shall be cleaned and incorporated into the new construction. Cost included with Concrete Removal.

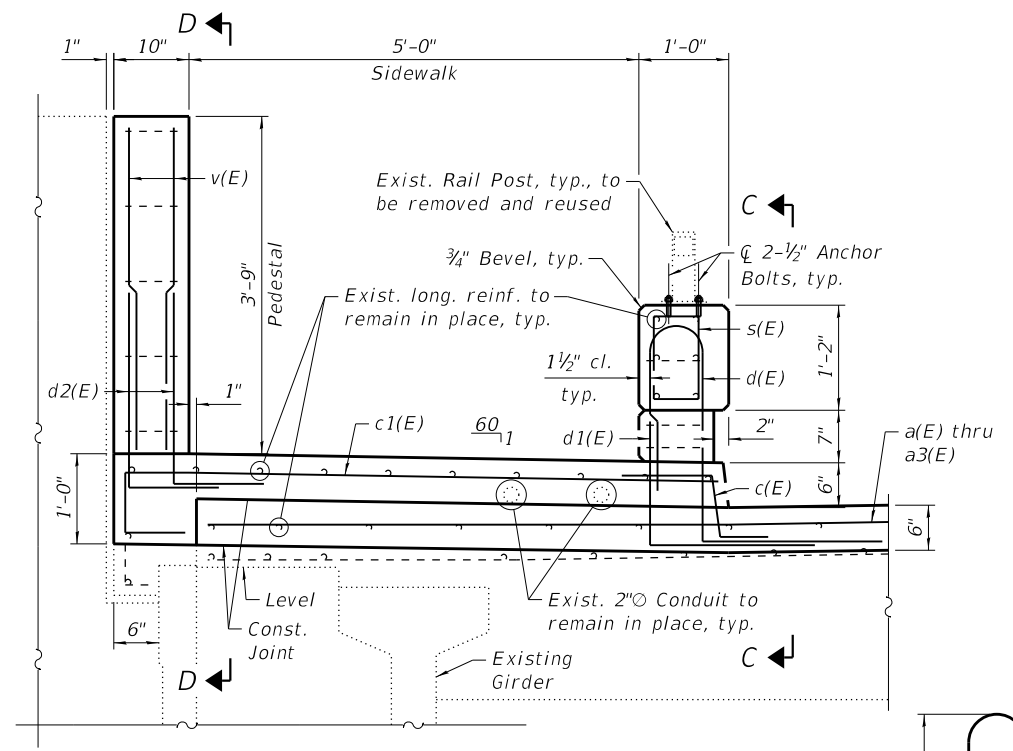
MODEL: Default
 FILE NAME: \\SERVER18\Projects\5418039\29 IDOT D1 PTB 187-006 WO29 IL 38 over Fox River Bridge Repairs\DCN\Bridge\Final\Plotsheets\045-2014-005-Exp-Replacement.dgn
 1/16/2020 7:47:00 AM



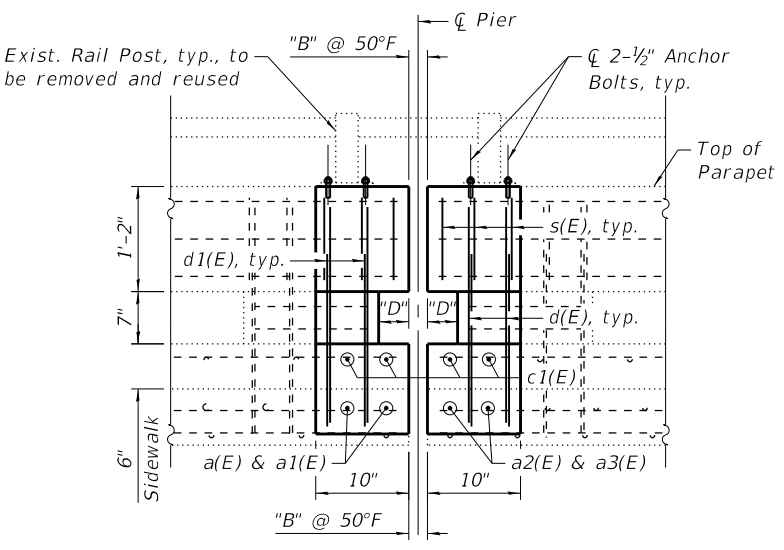
PLAN SHOWING REPLACEMENT
 Note: Pier 1 shown, Pier 4 similar.



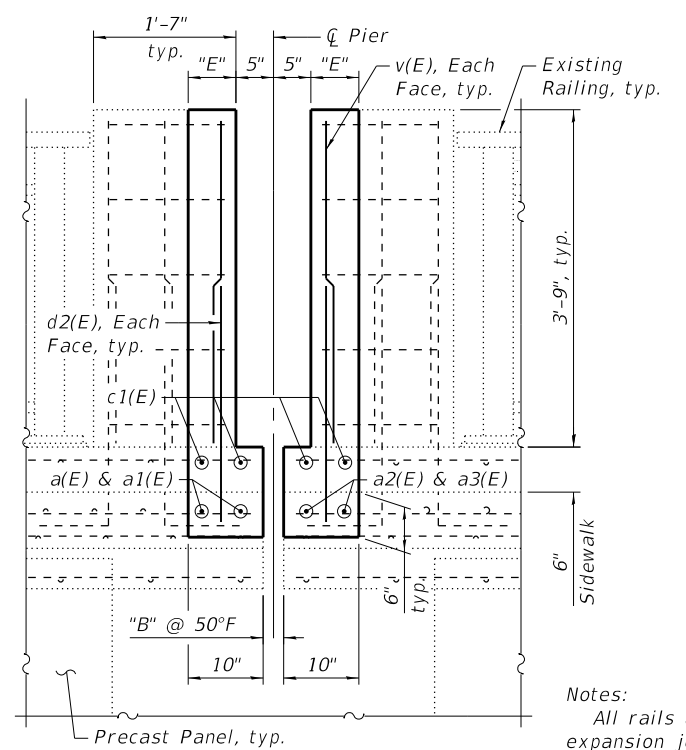
SECTION A-A



SECTION B-B
 (Far Bearings - Pier 1)
 (Near Bearings - Pier 4)



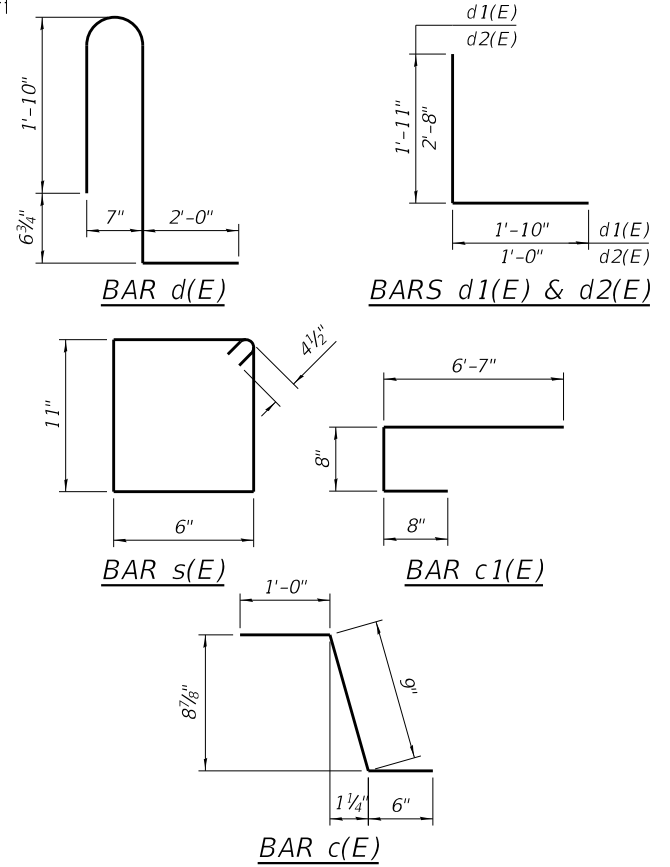
SECTION C-C



SECTION D-D

BILL OF MATERIAL
 (For 1 Joint Replacement)

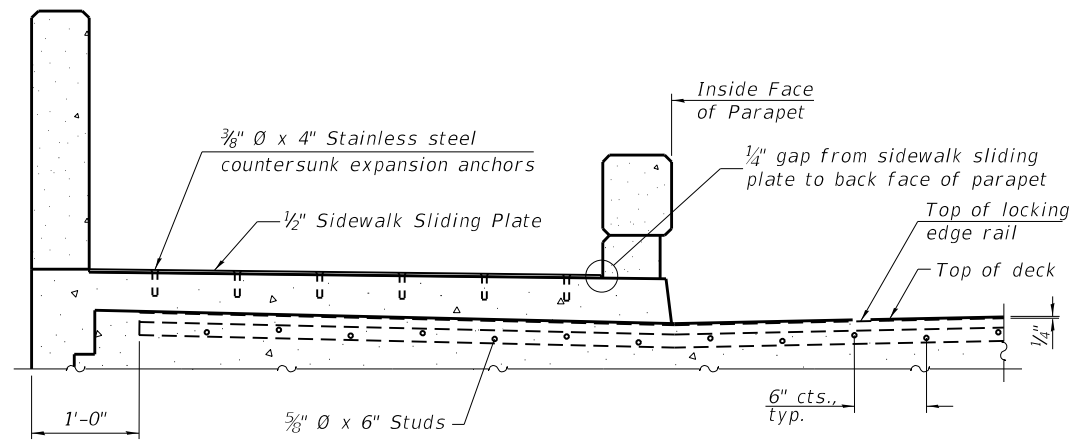
Bar	No.	Size	Length	Shape	
a(E)	4	#5	23'-6"	—	
a1(E)	2	#5	27'-1"	—	
a2(E)	4	#7	23'-6"	—	
a3(E)	2	#7	27'-1"	—	
c(E)	8	#5	2'-3"	⌋	
c1(E)	8	#5	7'-11"	⌋	
d(E)	8	#7	7'-0"	⌋	
d1(E)	8	#5	3'-9"	⌋	
d2(E)	8	#5	3'-8"	⌋	
s(E)	12	#4	3'-7"	⌋	
v(E)	8	#5	3'-7"	—	
Protective Coat				Sq. Yd.	19
Concrete Superstructure				Cu. Yd.	3.2
Reinforcement Bars, Epoxy Coated				Pound	780
Bar Splicer				Each	8
Anchor Bolts, 1/2"				Each	16



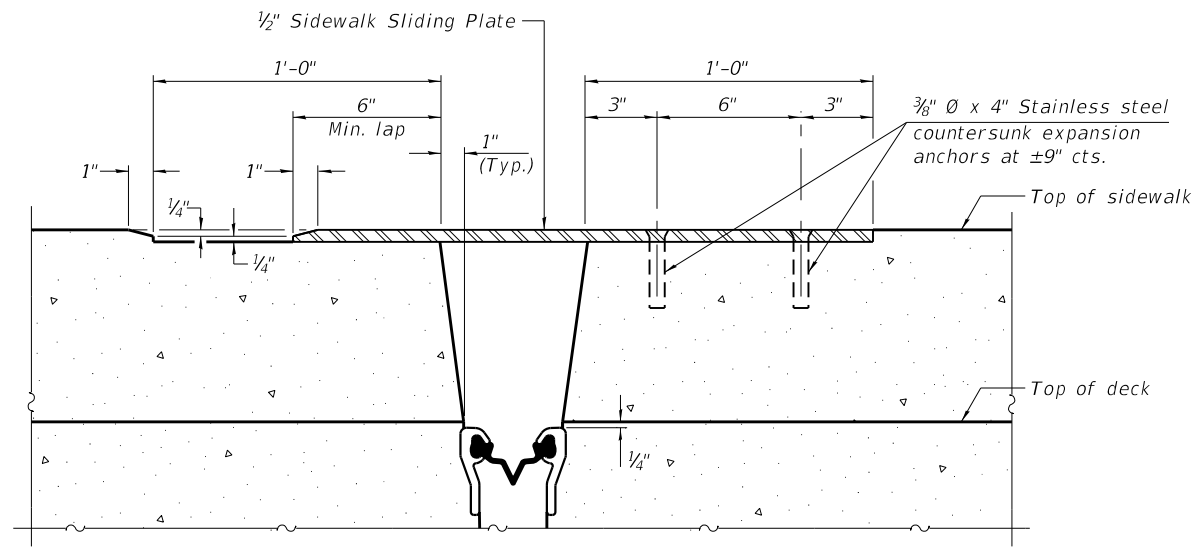
Notes:
 All rails are to remain in place and be anchored into new concrete during construction of the expansion joints. New anchor bolts shall be supplied and installed. This work and all materials shall be included in the contract unit price for Anchor Bolts, 1/2".
 All conduit and junction boxes are to remain in place and be set into new concrete during construction of the expansion joints. The existing conduit and junction chambers shall be cleaned and used in place. Care shall be taken to avoid damaging the conduit and junction boxes. This work and all materials shall be included in the contract unit price for concrete superstructure.

See Roadway Plans for extents of required traffic control.
 For dimensions B through E, see Sheets 4 & 6 of 11.

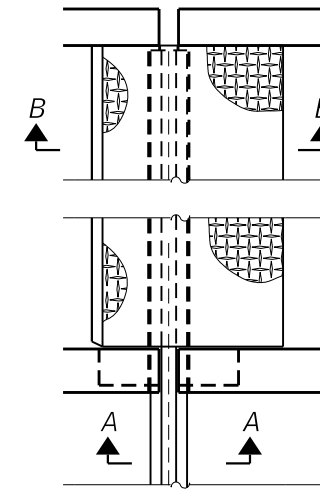
MODEL: Default
 FILE NAME: \\SERVER18\Projects\54118039\29 IDOT D1 PTB 187-006 WO29 IL 38 over Fox River Bridge Repairs\DCN\Bridges\Final\Plotsheets\045-2014-006-Pref-Joint-Seal-Details.dgn
 1/16/2020 7:47:07 AM



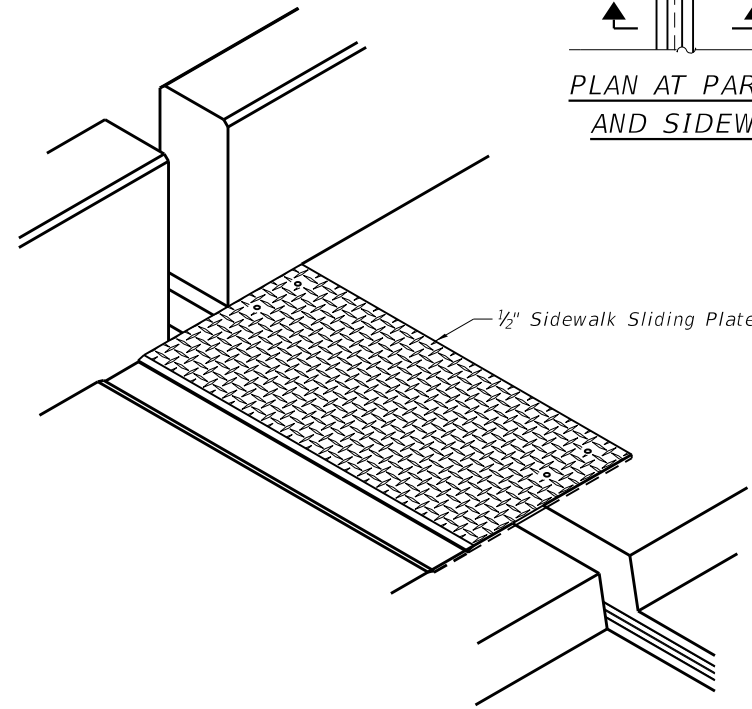
ELEVATION AT RAISED SIDEWALK



SECTION B-B



PLAN AT PARAPET AND SIDEWALK



TRIMETRIC VIEW

Note: Parapet not shown for clarity.

Notes:

The strip seal shall be made continuous and shall have a minimum thickness of 1/4". The configuration of the strip seal shall match the configuration of the locking edge rails. Open or "webbed" strip seal gland configurations are not permitted. The gland shall be sized for a maximum rated movement of 4 inches.

The locking edge rails depicted are configured for typical applications and are conceptual only. The actual configuration of the locking edge rails and matching strip seal may vary from manufacturer to manufacturer provided they fit the application and meet the minimum anchorage shown. Flanged edge rails, however, will not be allowed. Locking edge rails may exceed the 4 1/2" maximum depth provided the anchorage system is revised according to the manufacturer's recommendation.

The manufacturer's recommended installation methods shall be followed.

All steel components shall be galvanized after fabrication according to Article 520.03 of the Standard Specifications.

The Maximum space between locking edge rail segments shall be 3/16" and sealed with a suitable sealant; however, any rail joint within 10' measured perpendicular to the face of the curb or parapet shall be welded as shown in the locking edge rail splice detail.

The top surface of sidewalk sliding plates shall have a raised pattern according to ASTM A786.

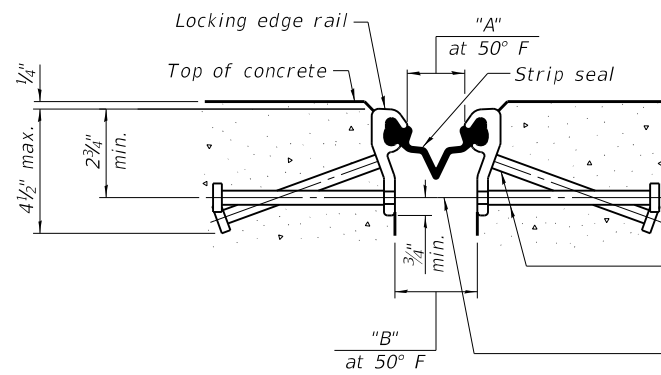
Cost of parapet sliding plates, sidewalk sliding plates, embedded plates, anchorage studs, and expansion anchors included with Preformed Joint Strip Seal.

19" Kansas Corral Rail shown.

The concrete opening below the strip seal will vary based on the locking edge rail chosen by the Contractor. Deck and parapet lengths shown elsewhere in the plans are dimensioned to the concrete opening, not the joint opening, and are based on the rolled locking edge rail. If the Contractor elects to use a different locking edge rail, dimensional adjustments may be required.

EXPANSION OPENINGS

Location	Dimension "A"	Dimension "B"
Pier 1	1 7/8"	2 3/4"
Pier 4	1 3/8"	2 1/2"



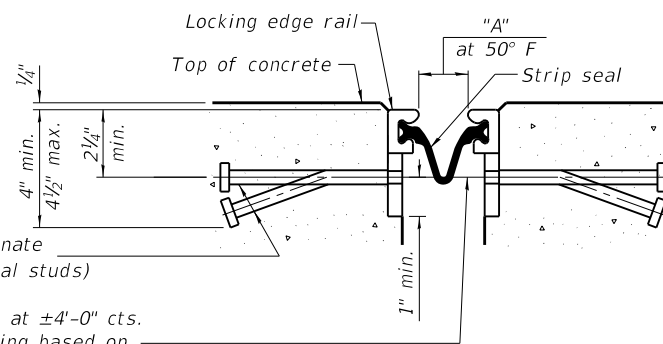
SHOWING ROLLED RAIL JOINT

* 5/8" diameter x 6" studs @ 6" cts. (alternate angled/bent studs with horizontal studs)

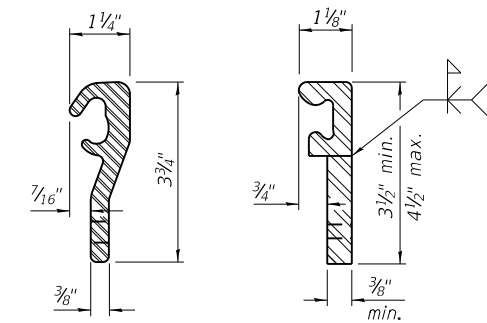
3/8" diameter threaded rods in 7/16" diameter holes at ±4'-0" cts. for holding the proper joint opening based on the temperature during the deck pour. Place to miss studs. All rods shall be burned, or sawed off flush with the plates after concrete is set.

SECTION A-A

* Granular or solid flux filled headed studs conforming to Article 1006.32 of the Std. Specs., automatically end welded.

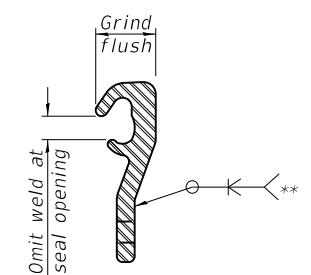


SHOWING WELDED RAIL JOINT



LOCKING EDGE RAILS
 ROLLED (EXTRUDED) RAIL WELDED RAIL

** Back gouge not required if complete joint penetration is verified by mock-up.



LOCKING EDGE RAIL SPLICE

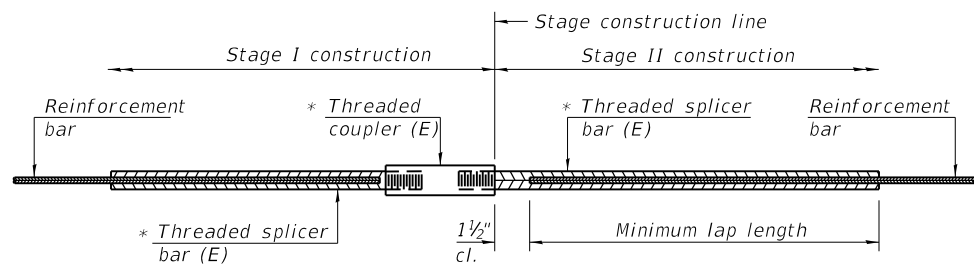
The inside of the locking edge rail groove shall be free of weld residue. Rolled rail shown, welded rail similar.

BILL OF MATERIAL

Item	Unit	Total
Preformed Joint Strip Seal	Foot	150

USER NAME =	DESIGNED - CMC	REVISED -
PLOT SCALE =	CHECKED - CDL	REVISED -
PLOT DATE =	DRAWN - CMC	REVISED -
	CHECKED -	REVISED -

F.A.P. RTE. 347	SECTION 2019-057-BR	COUNTY KANE	TOTAL SHEETS 24	SHEET NO. 10
CONTRACT NO. 62J34				
ILLINOIS FED. AID PROJECT				

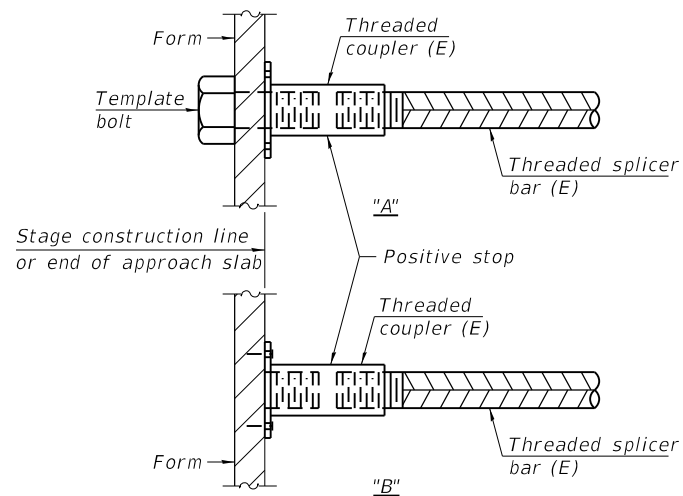


STANDARD BAR SPLICER ASSEMBLY

Threaded splicer bar length = min. lap length + 1 1/2" + thread length

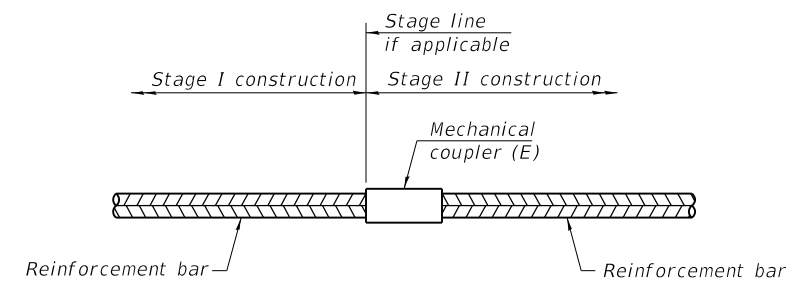
* Epoxy not required on Bar Splicer Assembly components used in conjunction with black bars.

Location	Bar size	No. assemblies required	Minimum lap length
Pier 1 - Span 1	#5	4	3'-6"
Pier 1 - Span 2	#7	4	6'-3"
Pier 4 - Span 4	#7	4	6'-3"
Pier 4 - Span 5	#5	4	3'-6"



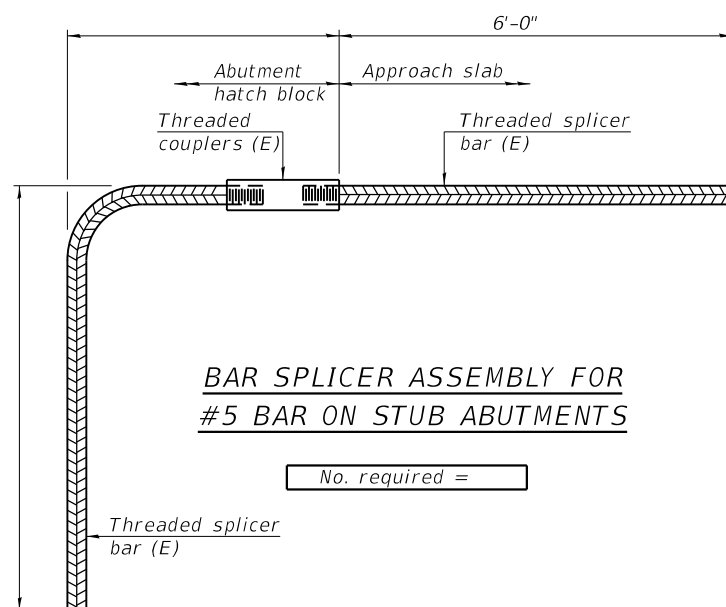
INSTALLATION AND SETTING METHODS

"A" : Set bar splicer assembly by means of a template bolt.
 "B" : Set bar splicer assembly by nailing to wood forms or cementing to steel forms.
 (E) : Indicates epoxy coating.



STANDARD MECHANICAL SPLICER

Location	Bar size	No. assemblies required



NOTES

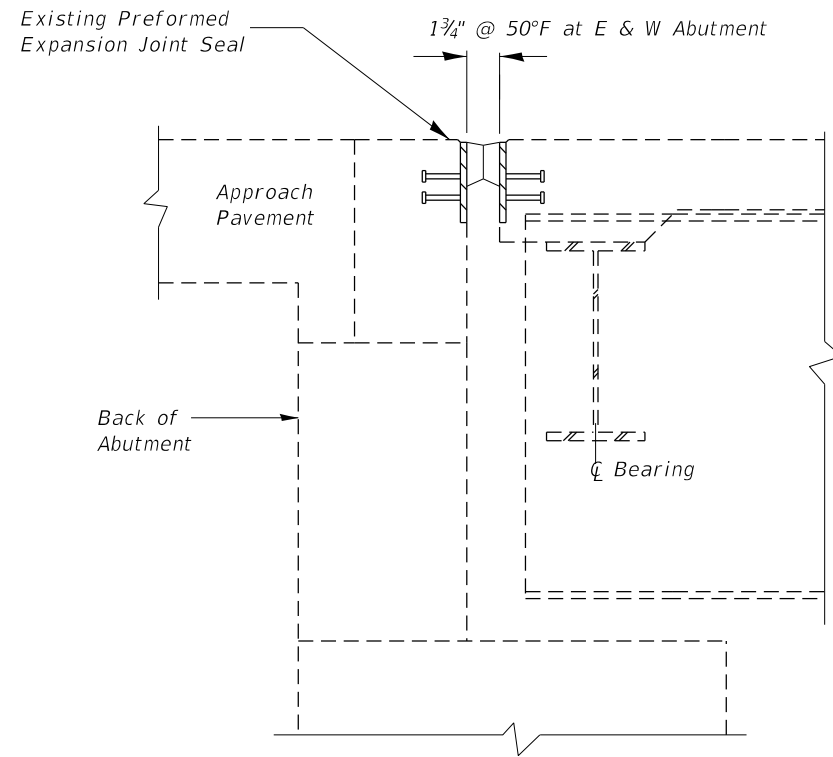
Splicer bars shall be deformed with threaded ends and have a minimum 60 ksi yield strength.
 All reinforcement shall be lapped and tied to the splicer bars.
 Bar splicer assemblies shall be epoxy coated according to the requirements for reinforcement bars. See Section 508 of the Standard Specifications.
 See approved list of bar splicer assemblies and mechanical splicers for alternatives.

MODEL: Default
 FILE NAME: \\SERVER18\Projects\54118039\29 IDOT D1 PTB 187-006 WO29 IL 38 over Fox River Bridge Repairs\DCN\Bridges\Final\Plotsheets\045-2014-007-Bar-Splacers.dgn

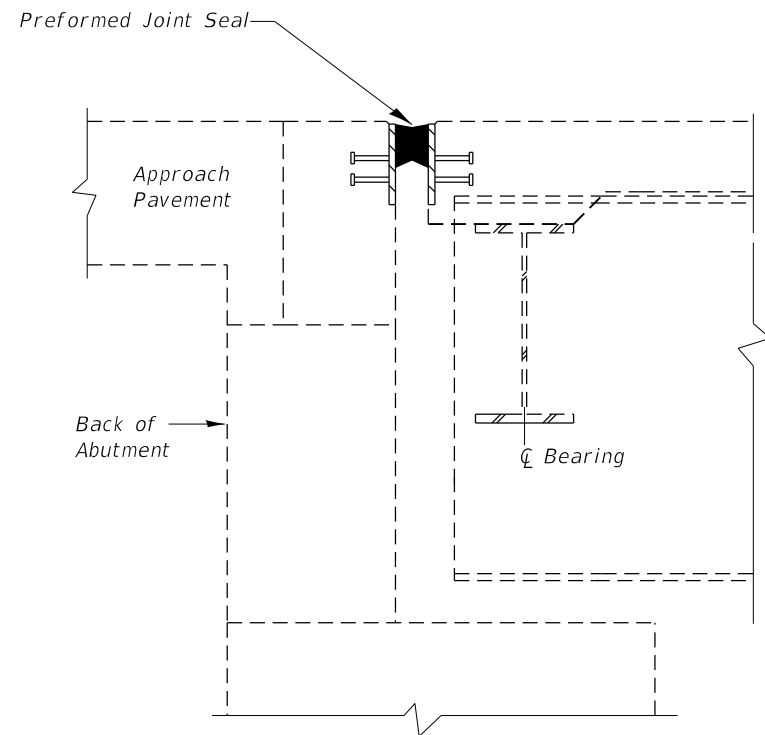
BSD-1 2-17-2017

EFK•Moen Civil Engineering Design	USER NAME =	DESIGNED - CMC	REVISED -	STATE OF ILLINOIS DEPARTMENT OF TRANSPORTATION	BAR SPLICER ASSEMBLY AND MECHANICAL SPLICER DETAILS STRUCTURE NO. 045-2014	F.A.P. RTE.	SECTION	COUNTY	TOTAL SHEETS	SHEET NO.
	PLOT SCALE =	DRAWN - CMC	REVISED -			347	2019-057-BR	KANE	24	11
	PLOT DATE =	CHECKED -	REVISED -			CONTRACT NO. 62J34				
						ILLINOIS		FED. AID PROJECT		

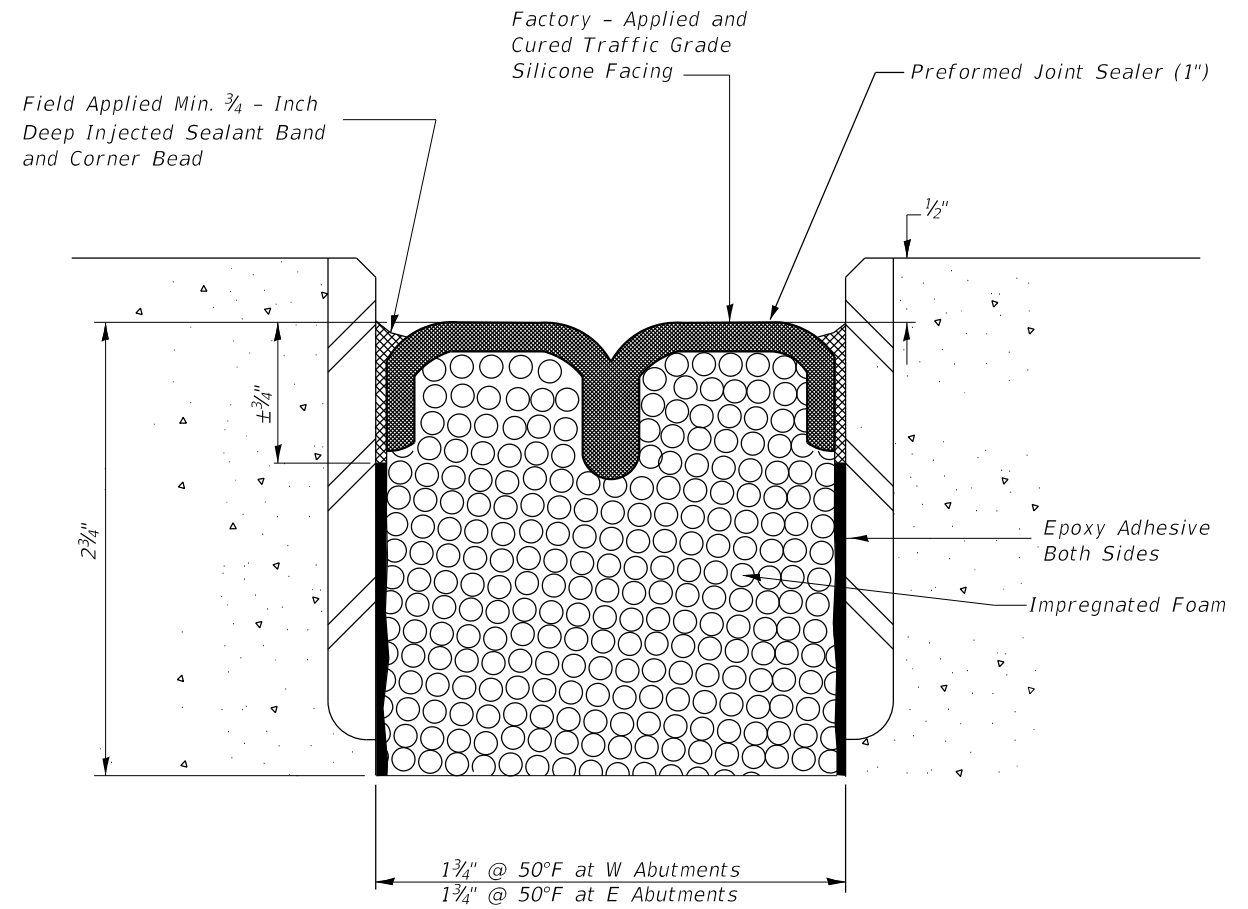
SHEET 7 OF 11 SHEETS



**EXISTING PREFORMED JOINT
AT EAST AND WEST ABUTMENTS**



**PROPOSED NEW PREFORMED JOINT SEAL
AT EAST AND WEST ABUTMENTS**



**PREFORMED JOINT SEAL
AT EAST AND WEST ABUTMENTS**

BILL OF MATERIALS

Item	Unit	Quantity
Preformed Joint Seal 1"	Foot	154

Notes:

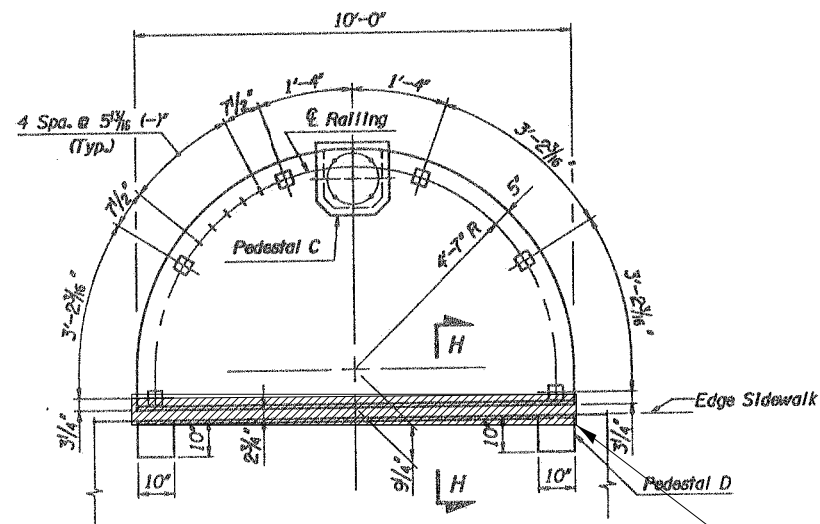
1. Joint seals shall be preformed pre-compressed, silicone coated self-expanding sealant system.
2. The removal of the existing joint is included in the cost of the preformed joint seal

MODEL: Default
FILE NAME: \\SERVER18\Projects\54118039\29 IDOT D1 PTB 187-006 WO29 IL 38 over Fox River Bridge Repairs\DCN\Bridge\Final\Plotsheets\045-2014-00X-IDOT Details.dgn

USER NAME =	DESIGNED - CMC	REVISED -
	CHECKED - CDL	REVISED -
PLOT SCALE =	DRAWN - CMC	REVISED -
PLOT DATE =	CHECKED -	REVISED -

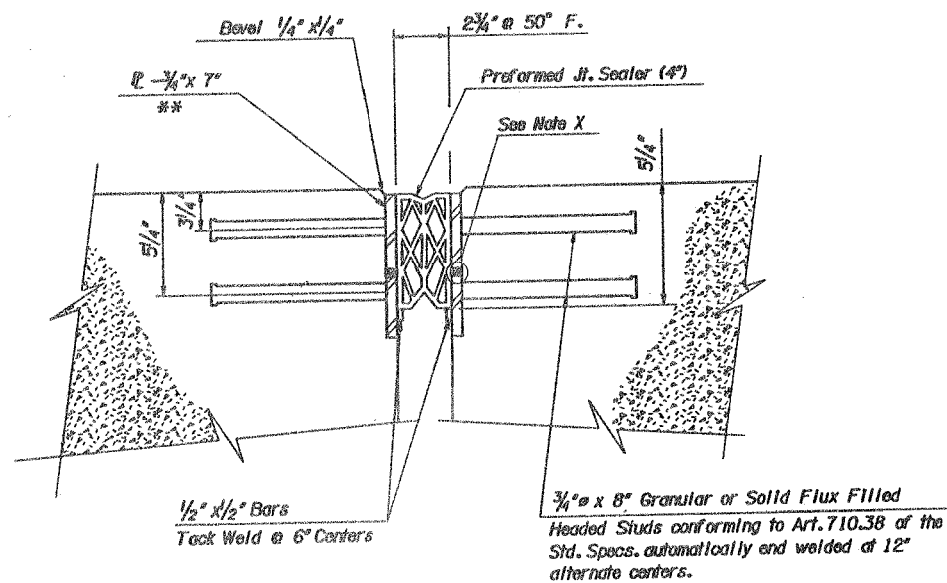
F.A.P. RTE.	SECTION	COUNTY	TOTAL SHEETS	SHEET NO.
347	2019-057-BR	KANE	24	12
			CONTRACT NO. 62J34	
		ILLINOIS	FED. AID PROJECT	

MODEL: Default
 FILE NAME: \\SERVER18\Projects\54118039\29 IDOT D1 PTB 187-006 WO29 IL 38 over Fox River Bridge Repairs\DCN\Bridges\Final\Plotsheets\045-2014-00X-IDOT Details.dgn
 1/16/2020 7:47:37 AM

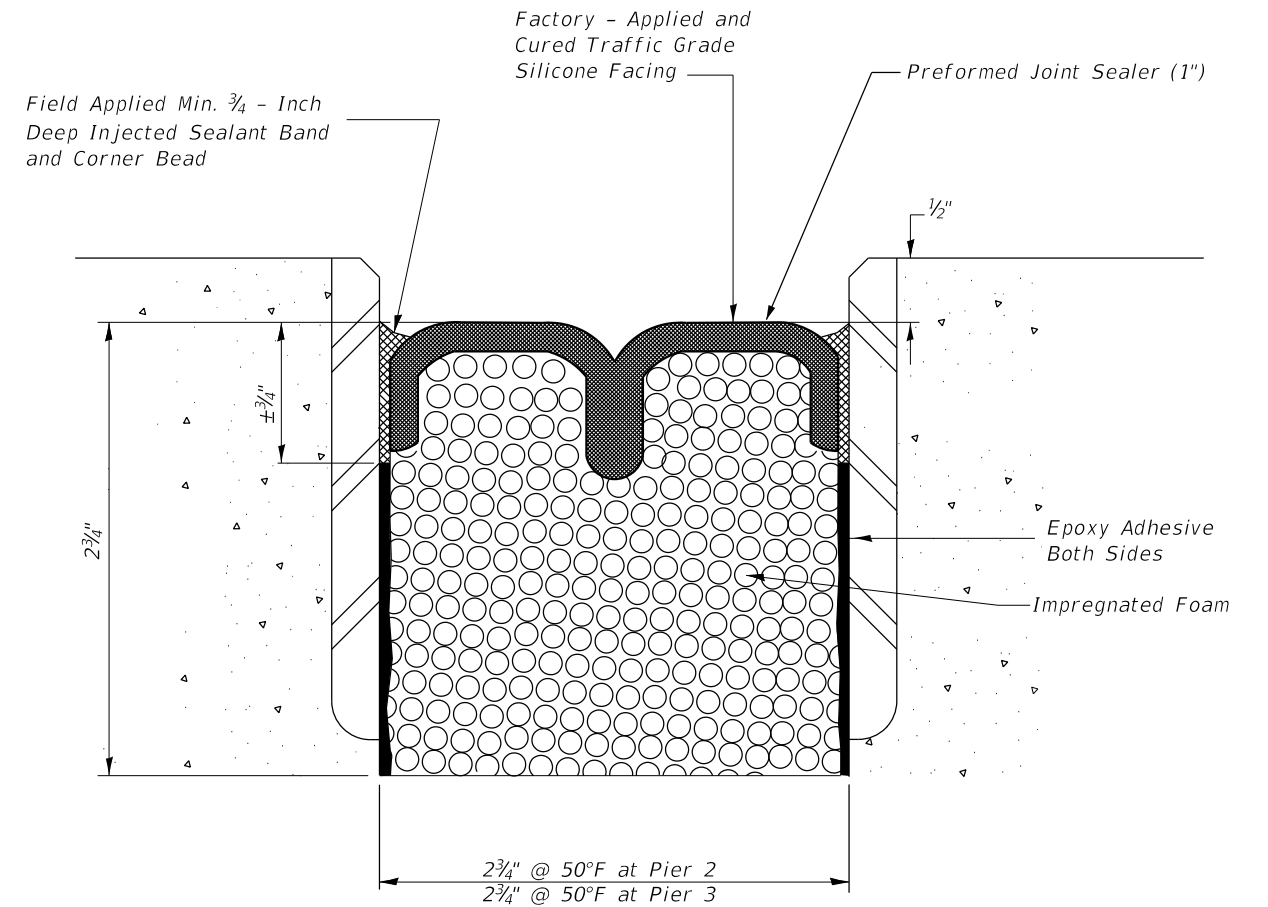


TYPICAL LOOKOUT DETAIL
 (At Piers 2 and 3)

Existing Preformed
 Expansion Joint Seal



EXISTING PREFORMED JOINT SEALER 4"
 AT LOOKOUTS AT PIER 2 & 3



PROPOSED PREFORMED JOINT SEALER 1"
 AT LOOKOUTS AT PIER 2 & 3

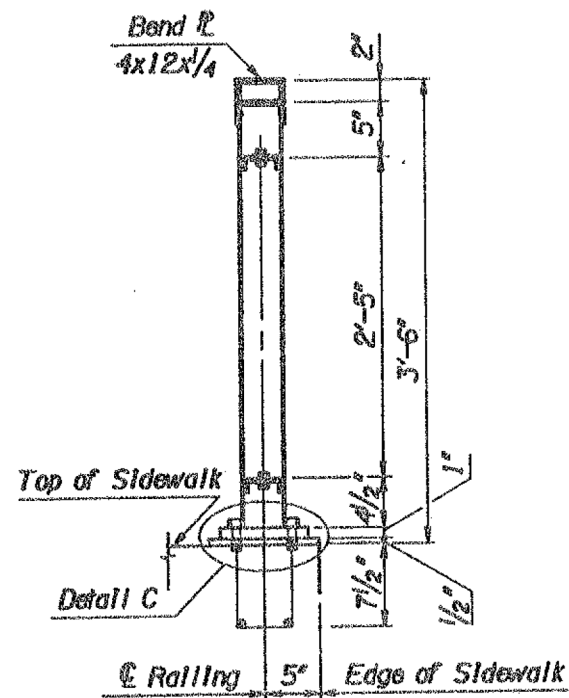
BILL OF MATERIALS

Item	Unit	Quantity
Preformed Joint Seal 1"	Foot	50

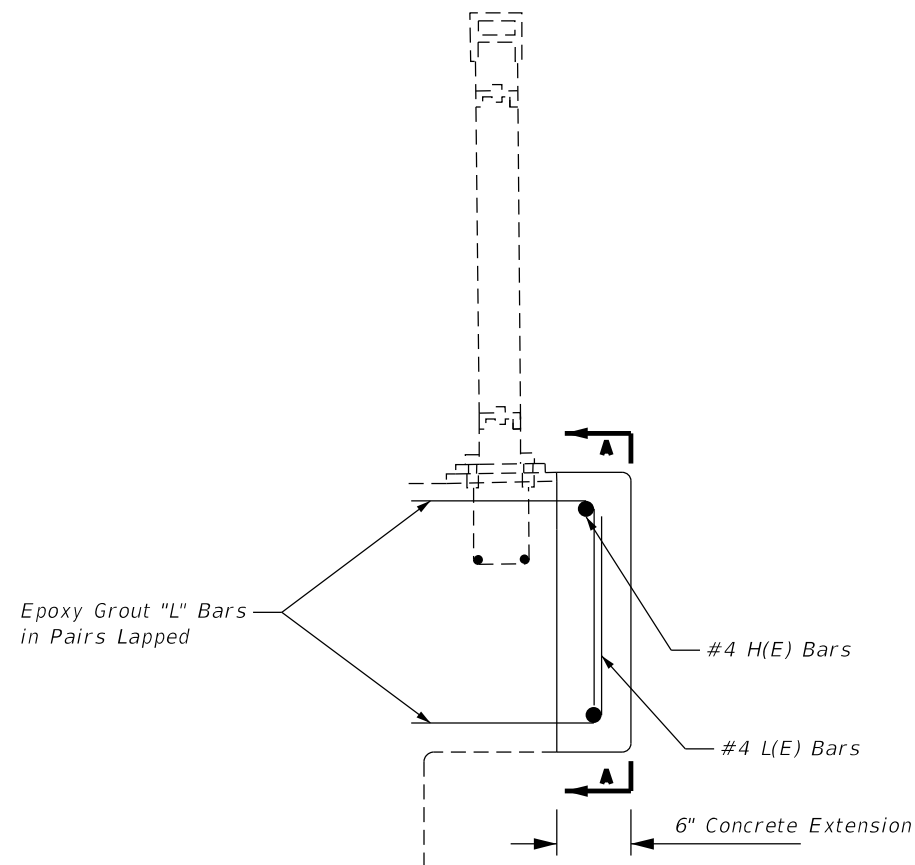
Notes:

- Joint seals shall be preformed pre-compressed, silicone coated self-expanding sealant system.
- The removal of the existing joint is included in the cost of the preformed joint seal

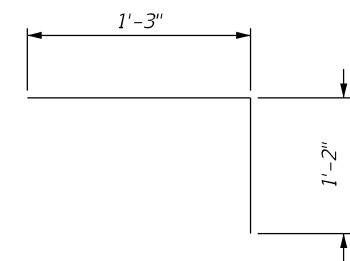
MODEL: Default
 FILE NAME: \\SERVER18\Projects\54118039\29 IDOT D1 PTB 187-006 WO29 IL 38 over Fox River Bridge Repairs\DCN\Bridges\Final\Plotsheets\045-2014-00X-IDOT Details.dgn
 1/16/2020 7:47:47 AM



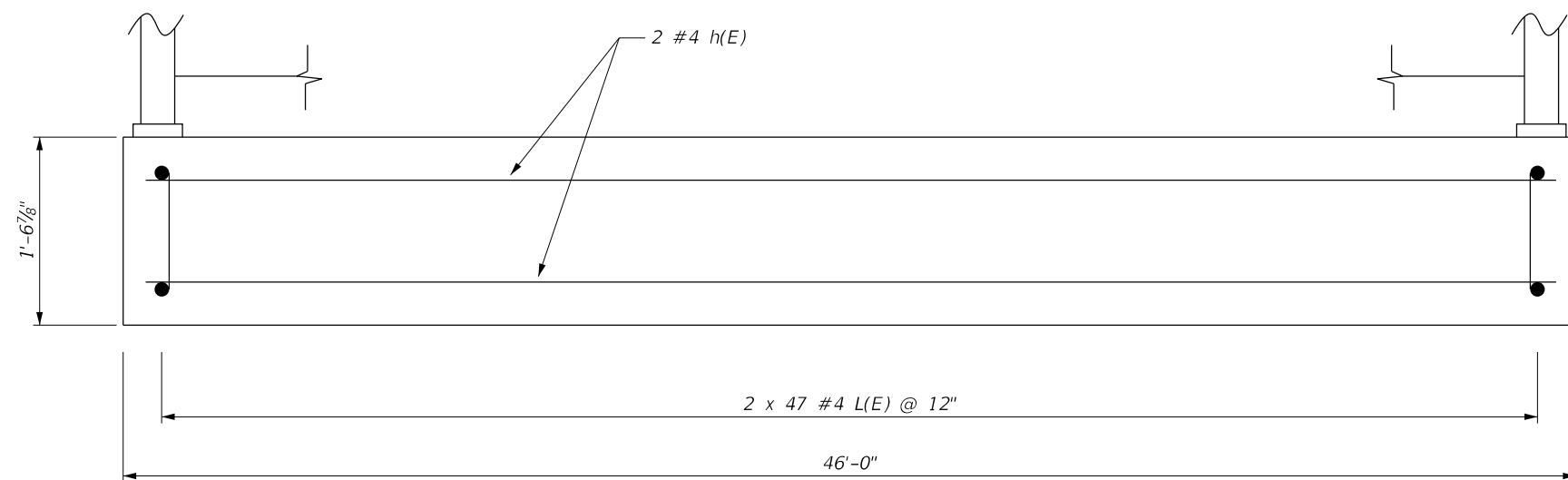
**EXISTING PEDESTRIAN HAND RAILING
 AT SPAN 5**



**PROPOSED PEDESTRIAN HAND RAILING REPAIR
 AT SPAN 5**



BAR L(E)

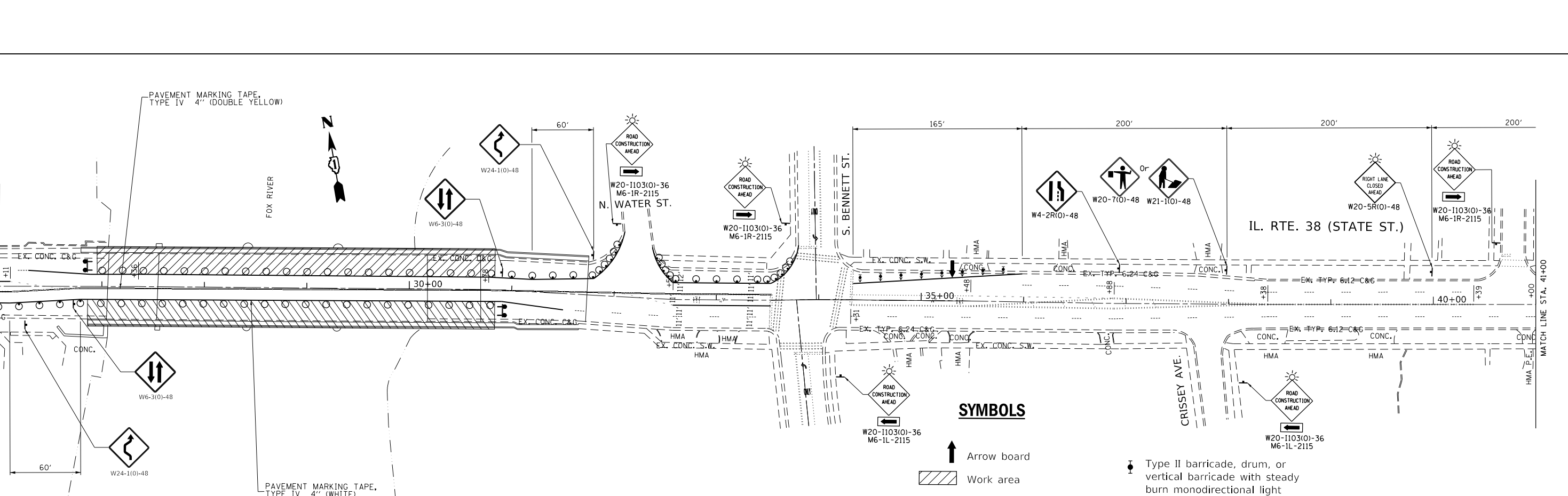
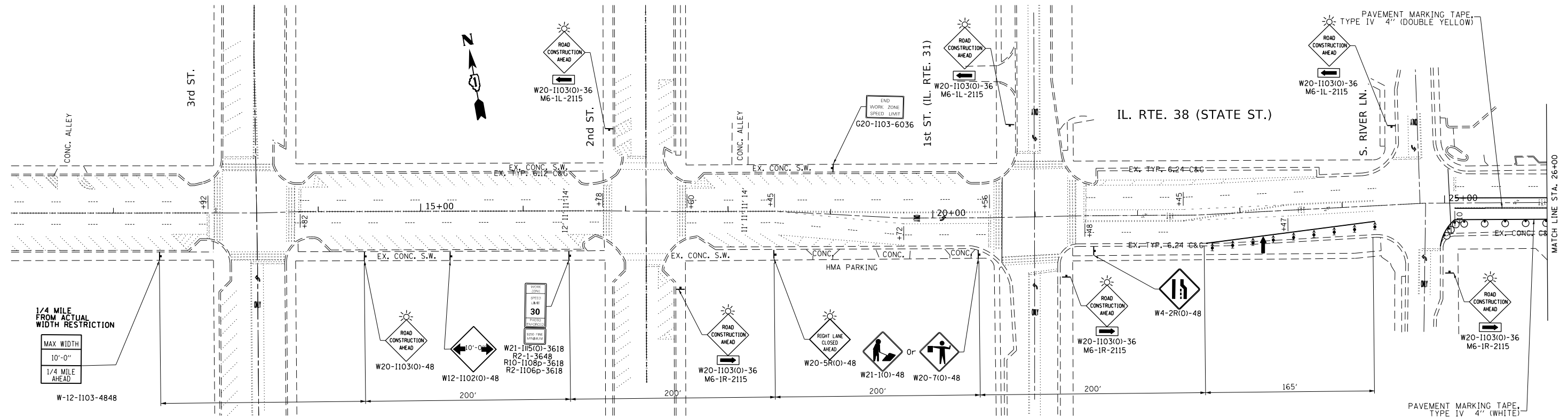


**SECTION A-A
 ELEVATION (SPAN 5)
 (LOOKING SOUTH)**

BILL OF MATERIALS

Bar	No.	Size	Length	Shape	
h(E)	2	#4	45'-8"	—	
L(E)	94	#4	2'-5"	⌊	
Reinforcement Bars Epoxy Coated				Pound	210
Concrete Superstructure				Cu. Yd.	1.3

MODEL: Default
 FILE: \\blm\c:\pub\blm\room\dat\illroads\gov\p\w\dot\Documents\DOT_Offices\blm\ref_1\Projects\118419\CADD\blm\Design\0118419_sht-ct3a.dwg



SYMBOLS

- Arrow board
- Work area
- Sign
- Direction indicator barricade with steady burn monodirectional light
- Type II barricade, drum, or vertical barricade with steady burn monodirectional light
- Drum with steady burn monodirectional light
- Type III barricade with flashing lights

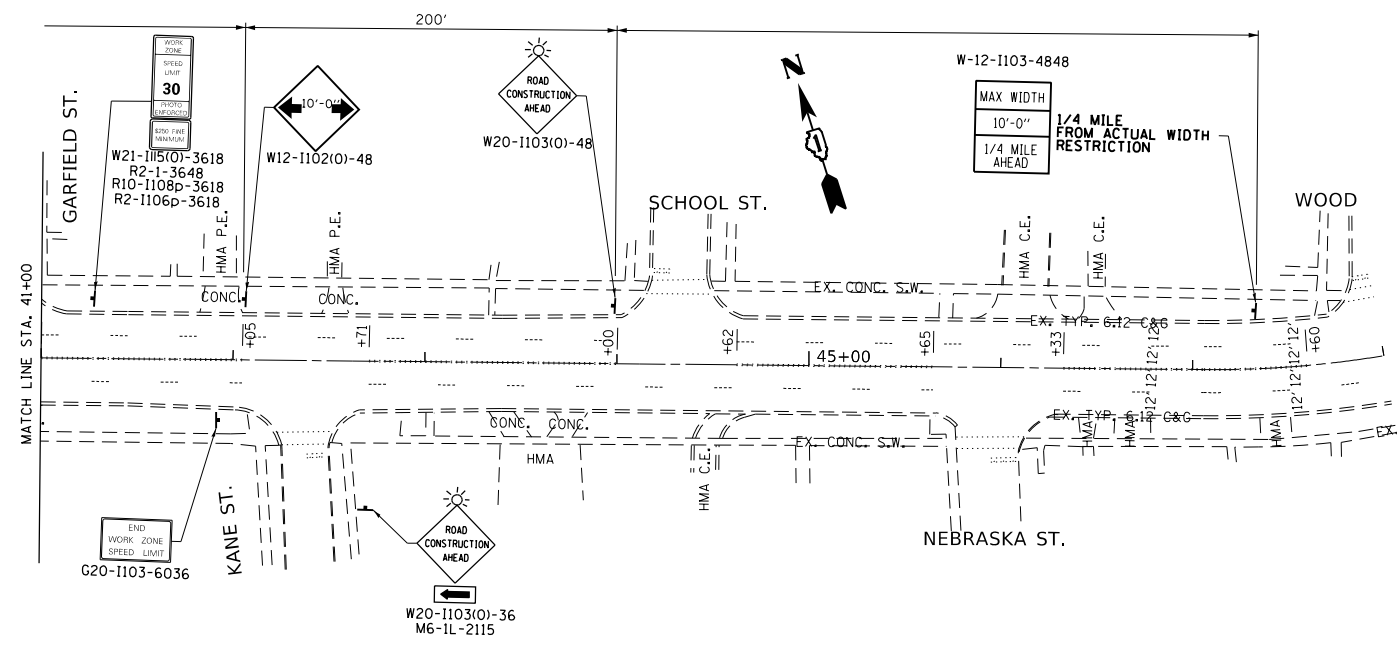
USER NAME = senadeeraai	DESIGNED -	REVISED -
	DRAWN -	REVISED -
PLOT SCALE = 100,0000' / in.	CHECKED -	REVISED -
PLOT DATE = 12/13/2019	DATE -	REVISED -

**STATE OF ILLINOIS
DEPARTMENT OF TRANSPORTATION**

**IL RTE. 38 (STATE ST.) OVER FOX RIVER
MAINTENANCE OF TRAFFIC: STAGE I**

SCALE: SHEET OF SHEETS STA. TO STA.

F.A.P. RTE.	SECTION	COUNTY	TOTAL SHEETS	SHEET NO.
347	2019-057-BR	KANE	24	16
CONTRACT NO. 62J34				
ILLINOIS		FED. AID PROJECT		



- SYMBOLS**
- Arrow board
 - Work area
 - Sign
 - Direction indicator barricade with steady burn monodirectional light
 - Type II barricade, drum, or vertical barricade with steady burn monodirectional light
 - Drum with steady burn monodirectional light
 - Type III barricade with flashing lights

MODEL: Default
 FILE: h:\mhc\proj\pub\room\dat\illinois.gov\PWIDOT\Documents\DOT_Offices\District_1\Projects\118419\CaddData\Design\118419_sht-ctg1bns.dgn

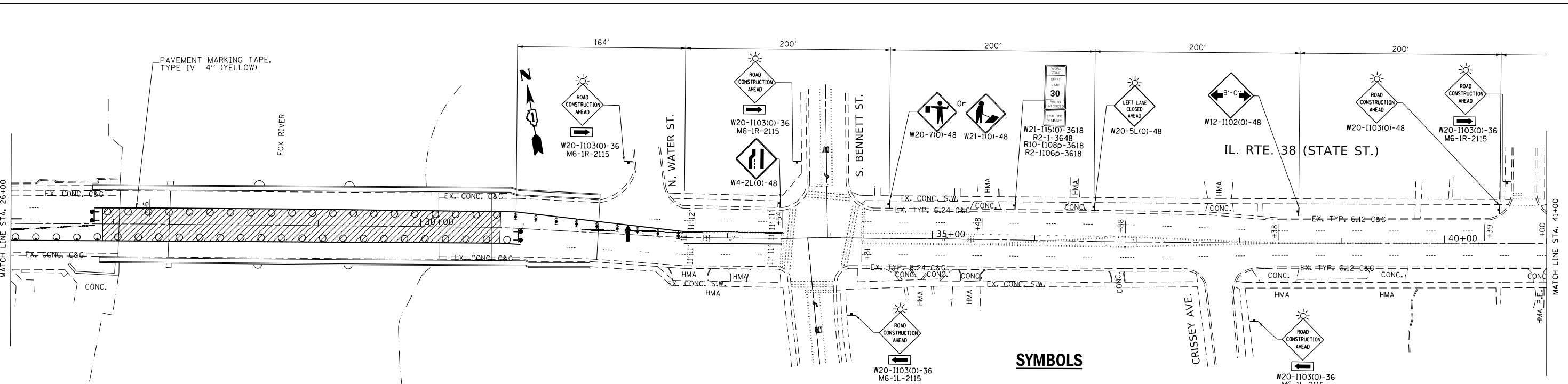
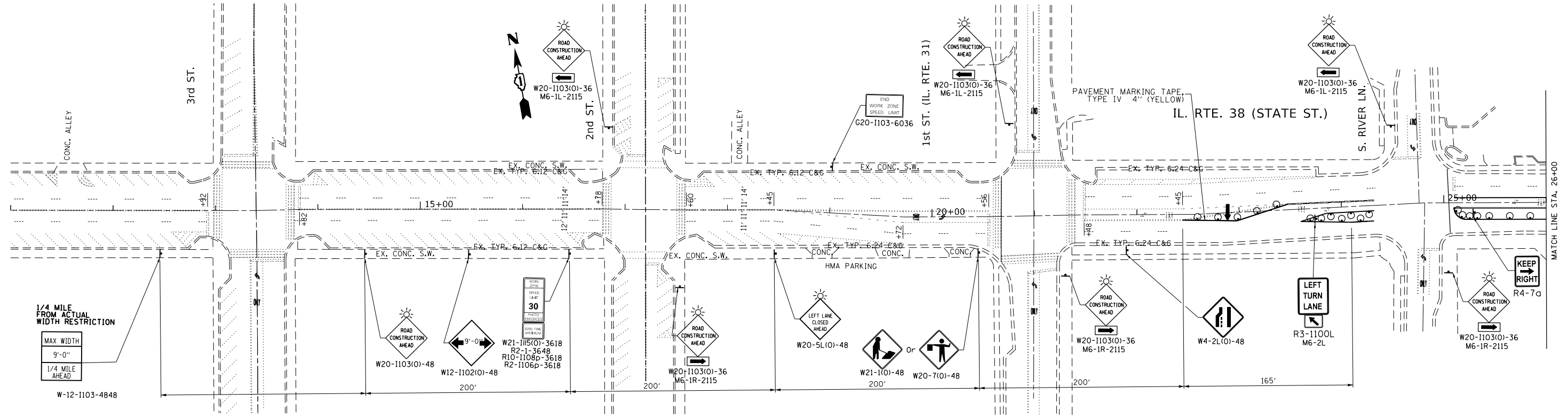
USER NAME = senadeeraai	DESIGNED -	REVISED -
	DRAWN -	REVISED -
PLOT SCALE = 100,0000' / in.	CHECKED -	REVISED -
PLOT DATE = 12/13/2019	DATE -	REVISED -

STATE OF ILLINOIS
DEPARTMENT OF TRANSPORTATION



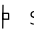



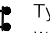
IL RTE. 38 (STATE ST.) OVER FOX RIVER MAINTENACE OF TRAFFIC: STAGE I			
SCALE:	SHEET	OF SHEETS	STA. TO STA.

F.A.P. RTE.	SECTION	COUNTY	TOTAL SHEETS	SHEET NO.
347	2019-057-BR	KANE	24	17
CONTRACT NO. 62J34				
		ILLINOIS	FED. AID PROJECT	

MODEL: Default
 FILE: \\bls01c:\pub\planroom\dat\illinois\gov\PHWDOT\Documents\IBDOT_Offices\District 1\Projects\2019\2019-05-7-RTA\IBDOT\18419-05-RTA\IBDOT.dgn
 PROJECT: 2019-05-7-RTA
 SHEET: 347 OF 347



SYMBOLS

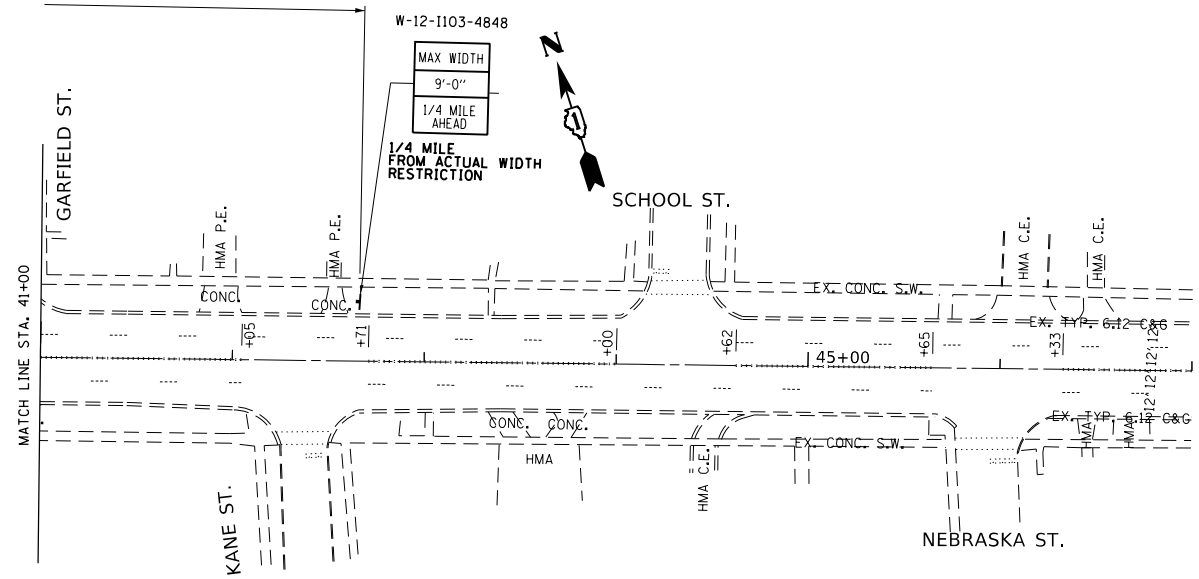
-  Arrow board
-  Work area
-  Sign
-  Direction indicator barricade with steady burn monodirectional light
-  Type II barricade, drum, or vertical barricade with steady burn monodirectional light
-  Drum with steady burn monodirectional light
-  Type III barricade with flashing lights

USER NAME = senadeeraai	DESIGNED -	REVISED -
	DRAWN -	REVISED -
PLOT SCALE = 100.0000' / in.	CHECKED -	REVISED -
PLOT DATE = 12/13/2019	DATE -	REVISED -



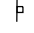




**STATE OF ILLINOIS
DEPARTMENT OF TRANSPORTATION**

IL RTE. 38 (STATE ST.) OVER FOX RIVER MAINTENANCE OF TRAFFIC: STAGE II			
SCALE:	SHEET	OF SHEETS	STA. TO STA.

F.A.P. RTE.	SECTION	COUNTY	TOTAL SHEETS	SHEET NO.
347	2019-057-BR	KANE	24	18
CONTRACT NO. 62J34				
ILLINOIS		FED. AID PROJECT		



SYMBOLS

-  Arrow board
-  Work area
-  Sign
-  Direction indicator barricade with steady burn monodirectional light
-  Type II barricade, drum, or vertical barricade with steady burn monodirectional light
-  Drum with steady burn monodirectional light
-  Type III barricade with flashing lights

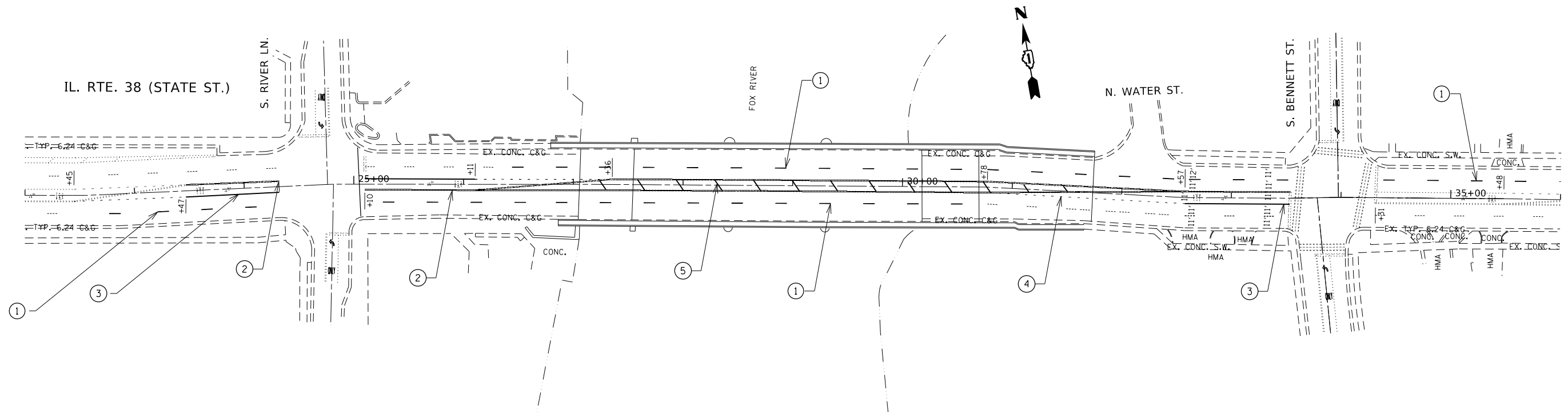
MODEL: Default
 FILE: h:\mfc_projects\p18419\CADD\Drawings\DOT_Offices\Drawings\18419_sht-ctg\p18419.dwg

USER NAME = senadeeraai	DESIGNED -	REVISED -
	DRAWN -	REVISED -
PLOT SCALE = 100.0059' / in.	CHECKED -	REVISED -
PLOT DATE = 12/13/2019	DATE -	REVISED -

STATE OF ILLINOIS
DEPARTMENT OF TRANSPORTATION

IL RTE. 38 (STATE ST.) OVER FOX RIVER MAINTENANCE OF TRAFFIC: STAGE II			
SCALE:	SHEET	OF	SHEETS
	STA.		TO STA.

F.A.P. RTE.	SECTION	COUNTY	TOTAL SHEETS	SHEET NO.
347	2019-057-BR	KANE	24	19
CONTRACT NO. 62J34				
ILLINOIS FED. AID PROJECT				



- ① PROP. THERMOPLASTIC PVMT MARKING 4", 10' DASH 30' SKIP, WHITE (TYP.)
- ② PROP. THERMOPLASTIC PVMT MARKING 4" SOLID, DOUBLE YELLOW @ 11" C-C (TYP.)
- ③ PROP. THERMOPLASTIC PVMT MARKING 6", TURN LANE, WHITE (TYP.)
- ④ PROP. THERMOPLASTIC PVMT MARKING 6", 2" DASH 6' SKIP, WHITE (TYP.)
- ⑤ PROP. THERMOPLASTIC PVMT MARKING 12", DIAGONALS @ 45°, YELLOW (TYP.)

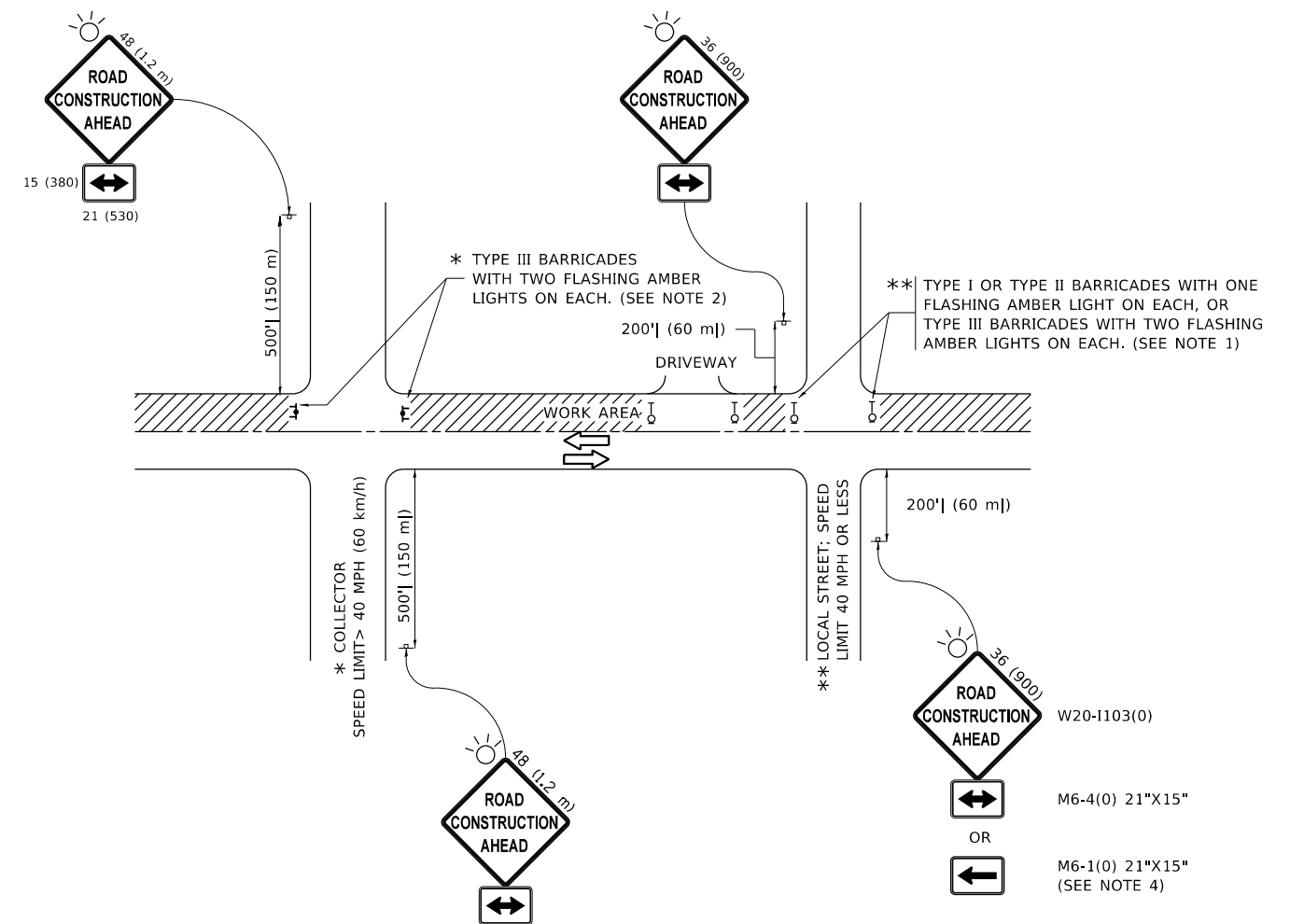
MODEL: Default
 FILE: h:\mhc\p\pub\harcam\dat\illinois.gov\pww\DOT\Documents\DOT_Offices\Illin\1\Projects\18419\CADD\Drawings\18419_sht-ctg\pav.dgn

USER NAME = senadeeraai	DESIGNED -	REVISED -
	DRAWN -	REVISED -
PLOT SCALE = 100.0000' / in.	CHECKED -	REVISED -
PLOT DATE = 12/13/2019	DATE -	REVISED -

STATE OF ILLINOIS
DEPARTMENT OF TRANSPORTATION

IL RTE. 38 (STATE ST.) OVER FOX RIVER			
PROPOSED PAVEMENT MARKING			
SCALE:	SHEET	OF SHEETS	STA. TO STA.

F.A.P. RTE.	SECTION	COUNTY	TOTAL SHEETS	SHEET NO.
347	2019-057-BR	KANE	24	20
CONTRACT NO. 62J34				
ILLINOIS FED. AID PROJECT				



NOTES:

1. SIDE ROAD WITH A SPEED LIMIT OF 40 MPH (60 km/h) OR LESS AS SHOWN ON THE DRAWING AND AS DIRECTED BY THE ENGINEER:
 - a) ONE "ROAD CONSTRUCTION AHEAD" SIGN 36 x 36 (900x900) WITH A FLASHER MOUNTED ON IT APPROXIMATELY 200' (60 m) IN ADVANCE OF THE MAIN ROUTE.
 - b) THE CLOSED PORTION OF THE MAIN ROUTE SHALL BE PROTECTED BY BLOCKING WITH TYPE I, TYPE II OR TYPE III BARRICADES, 1/3 OF THE CROSS SECTION OF THE CLOSED PORTION.
2. SIDE ROAD WITH A SPEED LIMIT GREATER THAN 40 MPH (60 km/h) AS SHOWN ON THE DRAWING AND AS DIRECTED BY THE ENGINEER:
 - a) ONE "ROAD CONSTRUCTION AHEAD" SIGN 48 x 48 (1.2 m x 1.2 m) WITH A FLASHER MOUNTED ON IT APPROXIMATELY 500' (150 m) IN ADVANCE OF THE MAIN ROUTE.
 - b) BLOCKING WITH TYPE III BARRICADES, 1/2 OF THE CROSS SECTION OF THE CLOSED PORTION.
3. CONES MAY BE SUBSTITUTED FOR BARRICADES OR DRUMS AT HALF THE SPACING DURING DAY OPERATIONS. CONES SHALL BE A MINIMUM OF 28 (710) IN HEIGHT.
4. SIGNING AND THE WORK ZONE, A SINGLE HEADED ARROW (M6-1) SHALL BE USED IN LIEU OF THE DOUBLE HEADED ARROW (M6-4).
5. WHEN WORK IS BEING PERFORMED ON A SIDE ROAD OR DRIVEWAY, FOLLOW THE APPLICABLE STANDARD(S). THE DIRECTIONAL ARROW (M6-1 OR M6-4) SHALL BE COVERED OR REMOVED WHEN NO LONGER CONSISTENT WITH THE TRAFFIC CONTROL SET-UP.
6. ADVANCE WARNING SIGNS ARE TO BE OMITTED ON DRIVEWAYS UNLESS OTHERWISE SPECIFIED IN THE PLANS OR BY THE ENGINEER.
7. THE TRAFFIC CONTROL AND PROTECTION FOR SIDE ROADS, INTERSECTIONS, AND DRIVEWAYS SHALL BE INCLUDED IN THE COST OF SPECIFIED TRAFFIC CONTROL STANDARDS OR ITEMS.

All dimensions are in inches (millimeters) unless otherwise shown.

MODEL: Default
FILE: \\nas01c.psu.edu\pub\harcourt\dot\Documents\DOT_Offices\Director_1\Projects\1184119\CADD\Drawings\Design\DRS\4.dgn

USER NAME = senadeeraai	DESIGNED - L.H.A.	REVISED - A. HOUSEH 10-15-96
	DRAWN -	REVISED - T. RAMMACHER 01-06-00
PLOT SCALE = 100.0000' / in.	CHECKED -	REVISED - A. SCHUETZE 07-01-13
PLOT DATE = 12/13/2019	DATE - 06-89	REVISED - A. SCHUETZE 09-15-16

**STATE OF ILLINOIS
DEPARTMENT OF TRANSPORTATION**

**TRAFFIC CONTROL AND PROTECTION FOR
SIDE ROADS, INTERSECTIONS, AND DRIVEWAYS**

SCALE: NONE SHEET 1 OF 1 SHEETS STA. TO STA.

F.A.P. RTE.	SECTION	COUNTY	TOTAL SHEETS	SHEET NO.
347	2019-057-19	KANE	24	21
TC-10			CONTRACT NO. 62J34	
ILLINOIS FED. AID PROJECT				

TURN BAY ENTRANCE AT START OF LANE CLOSURE TAPER

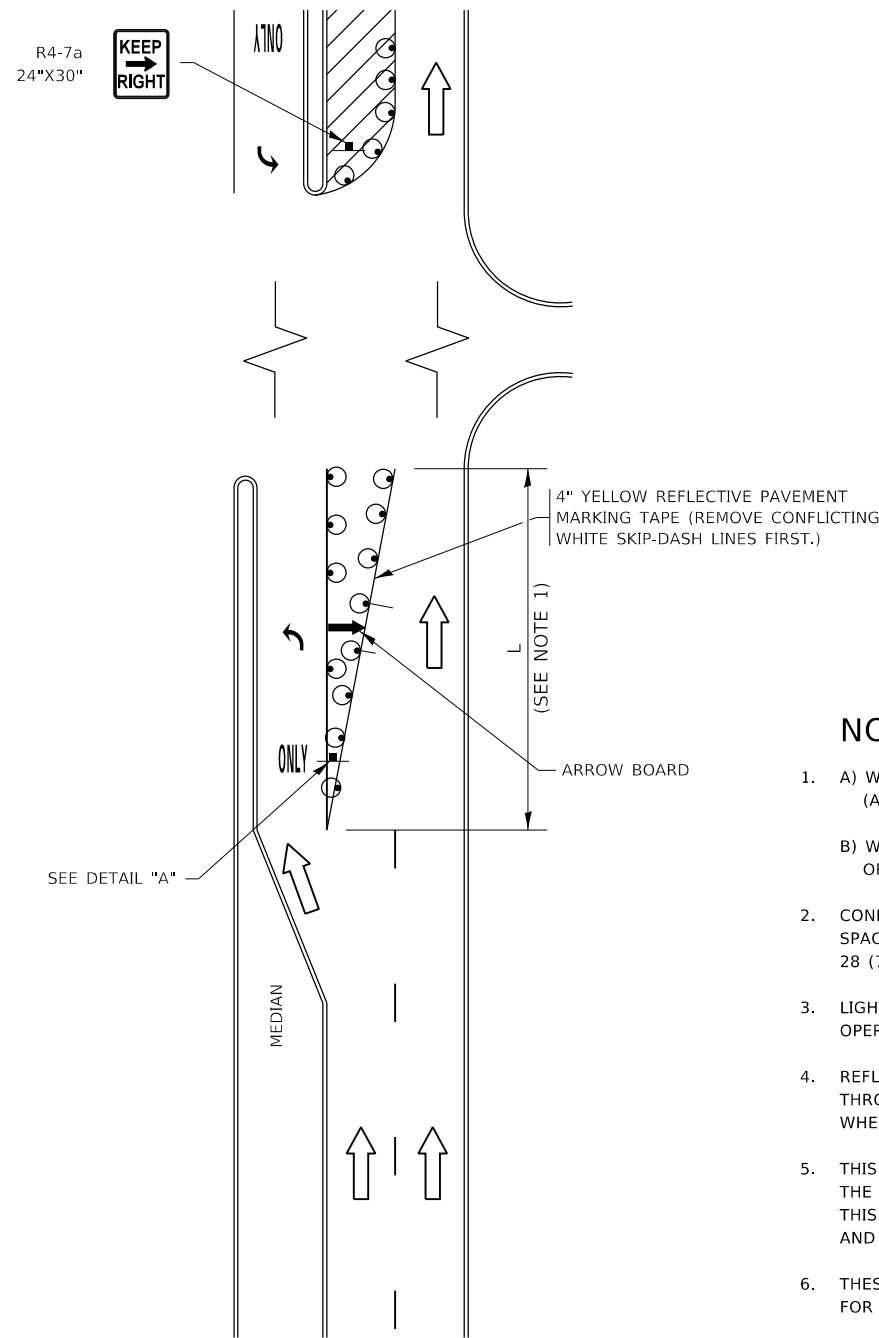


FIGURE 1

TURN BAY ENTRANCE WITHIN A LANE CLOSURE

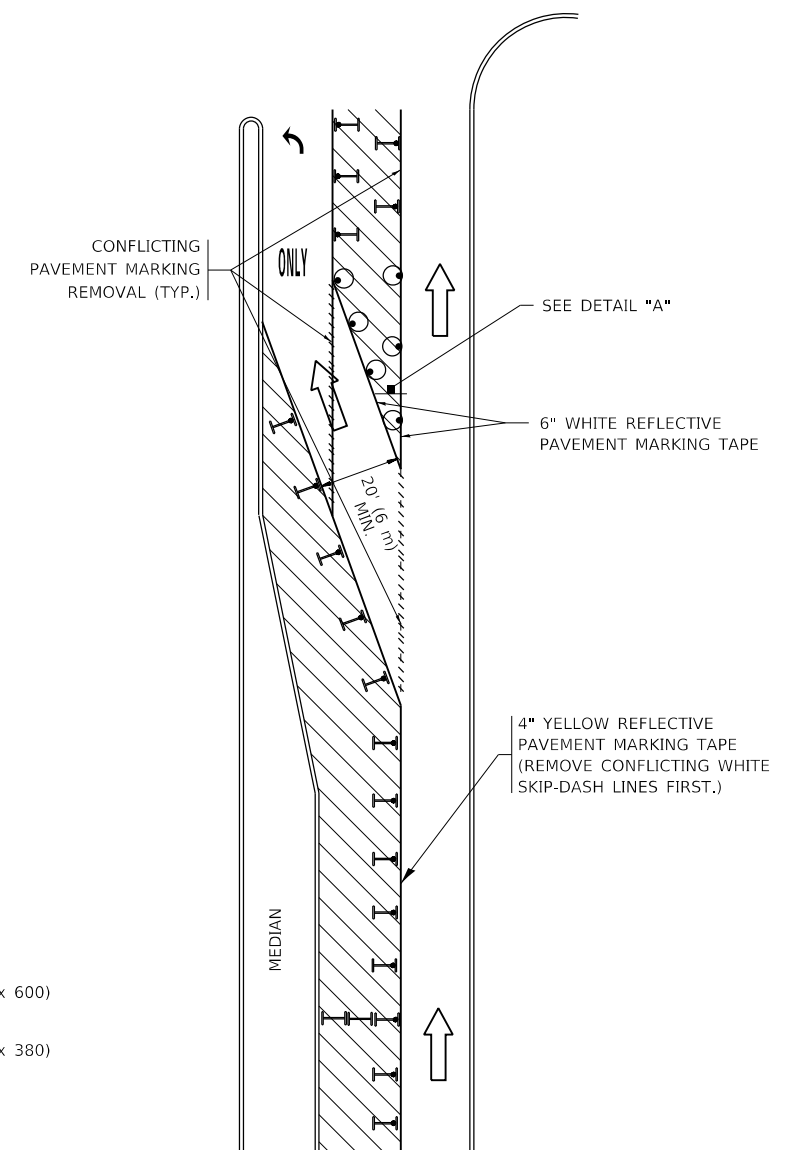
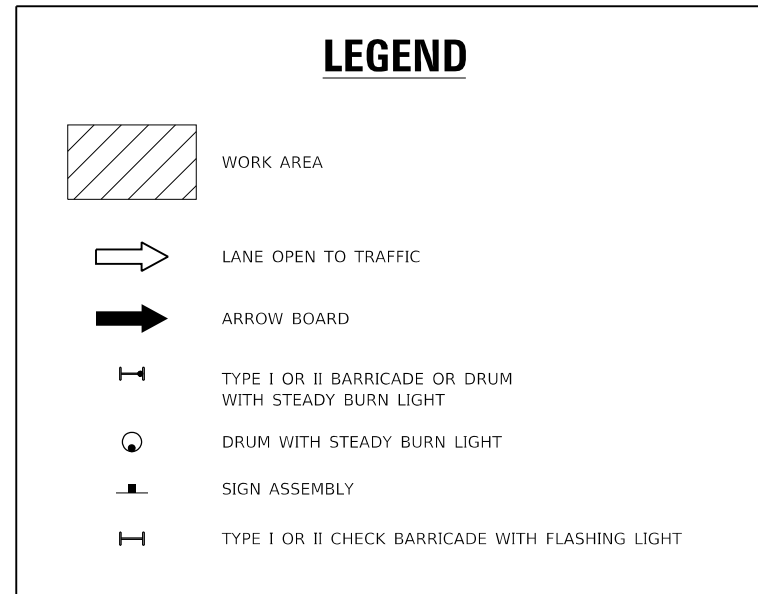
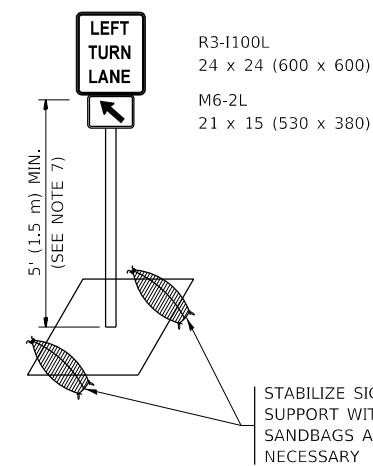


FIGURE 2



NOTES:

1. A) WHEN "L" IS \leq THE STORAGE LENGTH OF THE TURN LANE (AS SHOWN IN FIG. 1), USE FIGURE 1.
B) WHEN "L" IS $>$ THE STORAGE LENGTH OF THE TURN LANE OR THE TURN LANE IS WITHIN THE LANE CLOSURE, USE FIGURE 2.
2. CONES MAY BE SUBSTITUTED FOR BARRICADES OR DRUMS AT HALF THE SPACING DURING DAY OPERATIONS. CONES SHALL BE A MINIMUM OF 28 (710) IN HEIGHT.
3. LIGHTS WILL NOT BE REQUIRED ON BARRICADES OR DRUMS FOR DAY OPERATIONS. ALL LIGHTS SHALL BE MONODIRECTIONAL.
4. REFLECTIVE TEMPORARY PAVEMENT MARKINGS SHALL BE PLACED THROUGHOUT THE BARRICADED AREAS OF EACH TURN BAY AS SHOWN WHERE THE CLOSURE TIME IS GREATER THAN FOURTEEN (14) DAYS.
5. THIS APPLICATION ALSO APPLIES WHEN WORK IS BEING PERFORMED IN THE RIGHT LANE(S) AND THE RIGHT TURN BAY IS TO REMAIN OPEN. UNDER THIS CONDITION, "RIGHT TURN LANE" R3-1100R 24 x 24 (600 x 600) AND M6-2R 21 x 15 (530 x 380) SHALL BE USED.
6. THESE CONTROLS SHALL SUPPLEMENT MAINLINE TRAFFIC CONTROL FOR LANE CLOSURES.
7. THE SIGNS SHALL BE MOUNTED ABOVE THE BARRICADES/DRUMS ON SEPARATE SIGN SUPPORTS THAT MEET NCHRP 350 OR MASH REQUIREMENTS.
8. TRAFFIC CONTROL AND PROTECTION AT TURN BAYS (TO REMAIN OPEN TO TRAFFIC) SHALL BE INCLUDED IN THE COST OF SPECIFIED TRAFFIC CONTROL STANDARDS OR ITEMS.



DETAIL A

All dimensions are in inches (millimeters) unless otherwise shown.

MODEL: Default
FILE: h:\mhc\p\pub\p\mcom\dat\illinois.gov\PIWDOT\Documents\DOT_Offices\District_1\Projects\118419\CaddData\Design\DES\Std.dgn

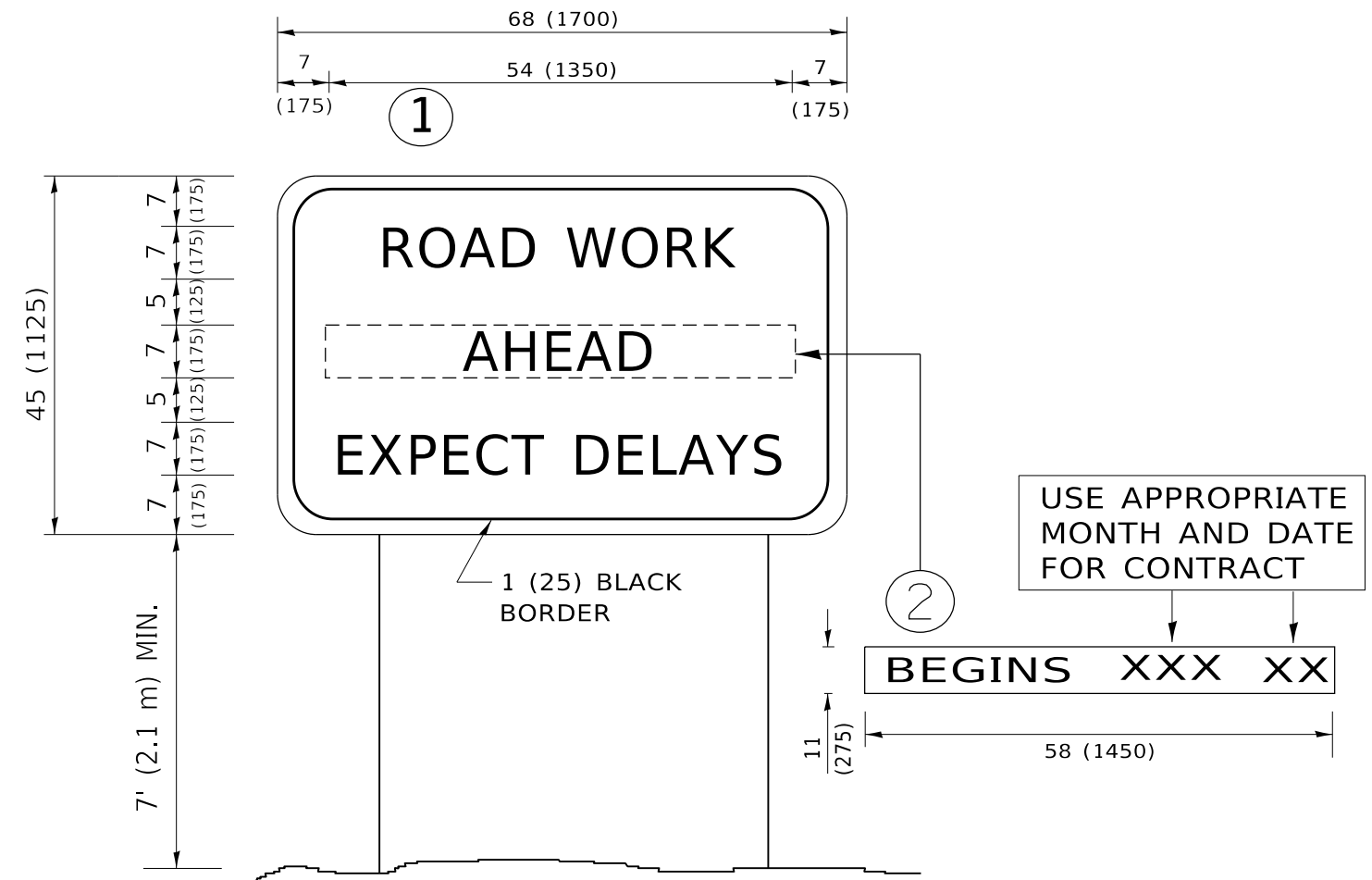
USER NAME = senadeeraai	DESIGNED - T. RAMMACHER 09-08-94	REVISED - R. BORO 09-14-09
	DRAWN - A. HOUSEH 11-07-95	REVISED - A. SCHUETZE 07-01-13
PLOT SCALE = 100,0000' / in.	CHECKED - A. HOUSEH 10-12-96	REVISED - A. SCHUETZE 09-15-16
PLOT DATE = 12/13/2019	DATE - T. RAMMACHER 01-06-00	REVISED -

STATE OF ILLINOIS
DEPARTMENT OF TRANSPORTATION

TRAFFIC CONTROL AND PROTECTION AT TURN BAYS
(TO REMAIN OPEN TO TRAFFIC)

SCALE: NONE SHEET 1 OF 1 SHEETS STA. TO STA.

F.A.P. RTE.	SECTION	COUNTY	TOTAL SHEETS	SHEET NO.
347	2019-057-19	KANE	24	23
TC-14		CONTRACT NO. 62J34		
ILLINOIS FED. AID PROJECT				



NOTES:

1. USE BLACK LETTERING ON ORANGE BACKGROUND.
2. ERECT SIGNS IN ADVANCE OF THE LOCATION FOR THE "ROAD CONSTRUCTION AHEAD" SIGN AT LOCATIONS AS DIRECTED BY THE ENGINEER.
3. ERECT SIGN ① WITH INSTALLED PANEL ② ONE WEEK PRIOR TO THE START OF CONSTRUCTION.
4. REMOVE PANEL ② SOON AFTER THE START OF CONSTRUCTION.
5. SEE SPECIAL PROVISION FOR "TEMPORARY INFORMATION SIGNING" FOR ADDITIONAL INFORMATION.
6. ONE SIGN ASSEMBLY EQUALS 25.70 SQ. FT. (2.3 SQ. M.)
7. SHALL BE PAID FOR AS TEMPORARY INFORMATION SIGNING.

ALL DIMENSIONS ARE IN INCHES (MILLIMETERS) UNLESS OTHERWISE SHOWN.

MODEL: Default
 FILE: \\nas01c.psu.edu\pub\harcourt\dot\Documents\DOT_Offices\Dir\ctc_1\Projects\118419\CADD\Drawings\Design\DRS\4.dgn

USER NAME = senadeeraai	DESIGNED -	REVISED - R. MIRS 09-15-97
	DRAWN -	REVISED - R. MIRS 12-11-97
PLOT SCALE = 100.0000 ' / in.	CHECKED -	REVISED - T. RAMMACHER 02-02-99
PLOT DATE = 12/13/2019	DATE -	REVISED - C. JUCIUS 01-31-07

**STATE OF ILLINOIS
DEPARTMENT OF TRANSPORTATION**

**ARTERIAL ROAD
INFORMATION SIGN**

SCALE: NONE SHEET 1 OF 1 SHEETS STA. TO STA.

F.A.P. RTE.	SECTION	COUNTY	TOTAL SHEETS	SHEET NO.
347	2019-057-19	KANE	24	24
TC-22			CONTRACT NO. 62J34	
ILLINOIS FED. AID PROJECT				