

STATE OF ILLINOIS
DEPARTMENT OF TRANSPORTATION
DIVISION OF HIGHWAYS

**PROPOSED
HIGHWAY PLANS**

FAP RTE 42 (IL 13/127)
SECTION D9 PAV T PRESERVATION 2014-1

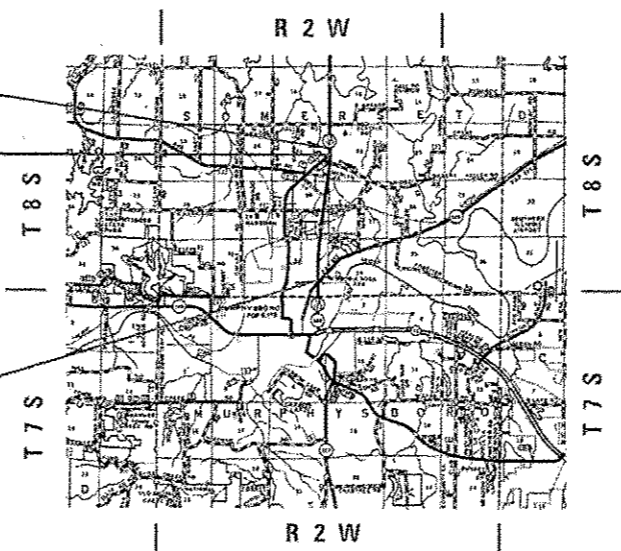
MICROSURFACING
JACKSON COUNTY

C-99-037-13

FAP 42 (IL 13/127)

PROP. IMPROVEMENT ENDS
STA. 160+26.81 (FAP 42)
EQ. STA. 495+30.60 (BK.) =
STA. 159+75.70 (AH.)

PROP. IMPROVEMENT BEGINS
STA. 369+00 (FAP 42)



FAP 42:
GROSS & NET LENGTH = 12,681.71 FT. = 2.40 MILE

FOR INDEX OF SHEETS, SEE SHEET NO. 3
IL 13/127
ADT: 7900 (2011)
PC - 7375
MU - 275
SU - 250

EQ. STA. 495 + 30.60 (BK.) =
STA. 159 + 75.70 (AH.)

TOWNSHIP: MURPHYSBORO

J.U.L.I.E.
JOINT UTILITY LOCATION INFORMATION FOR EXCAVATION
1-800-892-0123
OR 811

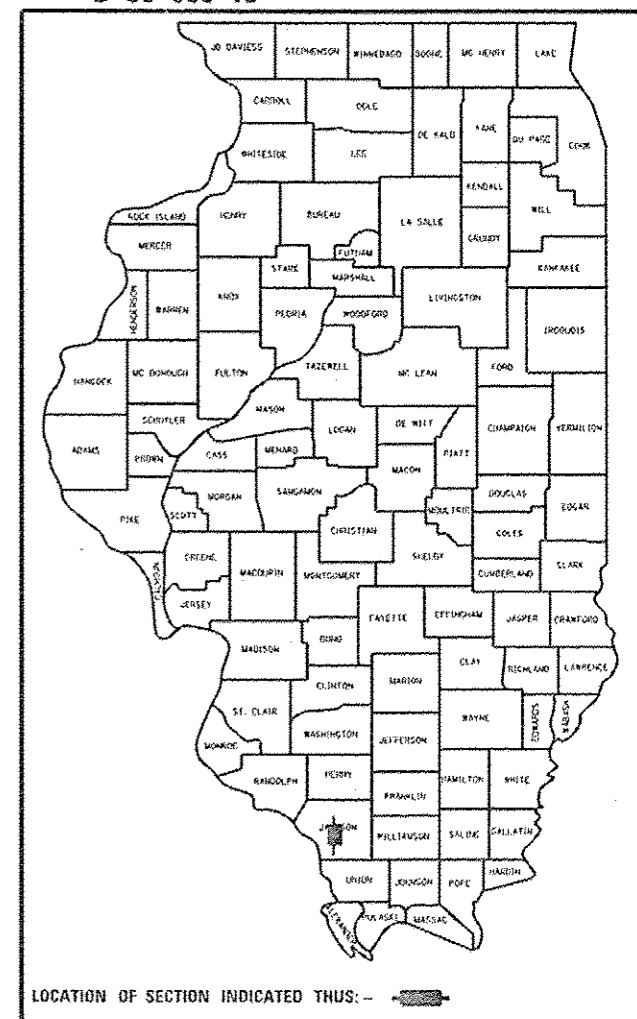
PROJECT ENGINEER CHARLES STEIN: 618-351-5210
PROJECT DESIGNER KATHI MCCORD: 618-351-5319

CONTRACT NO. 78366

P.A.R. RTE.	SECTION	COUNTY	TOTAL SHEETS	SHEET NO.
*	D9 PAVT PRESERV 2014-1	JACKSON/ILLINOIS	19	1
CONTRACT NO. 78366				

*FAP 42 (IL 13/127)

D-99-035-13



LOCATION OF SECTION INDICATED THUS: - [shaded rectangle]

STATE OF ILLINOIS
DEPARTMENT OF TRANSPORTATION
DIVISION OF HIGHWAYS

SUBMITTED December 3 2014
[Signature]
DEPUTY DIRECTOR OF HIGHWAYS, REGION ENGINEER
Jan 30 2015
[Signature]
ENGINEER OF DESIGN AND ENVIRONMENT
Jan 30 2015
[Signature]
DIRECTOR OF HIGHWAYS, CHIEF ENGINEER

PRINTED BY THE AUTHORITY
OF THE STATE OF ILLINOIS

Prepared By: Joe Blawie
DISTRICT STUDIES & PLANS ENGINEER

Examined By: J. Travis Emery by NTH
DISTRICT LAND ACQUISITION ENGINEER

Examined By: Cam Nelson
DISTRICT PROGRAM DEVELOPMENT ENGINEER

Examined By: Carl Kelly
DISTRICT OPERATIONS ENGINEER

Examined By: [Signature]
DISTRICT PROJECT IMPLEMENTATION ENGINEER

Examined By: Douglas J. McFarland
DISTRICT CONSTRUCTION ENGINEER

Examined By: [Signature]
DISTRICT MATERIALS ENGINEER

*FAP 42(IL 13/127)

FILE NAME *	USER NAME * mcoordkr	DESIGNED - _____	REVISED - _____	STATE OF ILLINOIS DEPARTMENT OF TRANSPORTATION	SIGNATURE SHEET		F.A.P. RTE.	SECTION	COUNTY	TOTAL SHEETS	SHEET NO.	
c:\pw_work\pwsdot\mcoordkr\d0342339\78366-sht-pln.dgn		DRAWN - _____	REVISED - _____		SCALE: _____	SHEET _____ OF _____ SHEETS	STA. _____ TO STA. _____	* D9 PAVT PRESERV 2014-1	JACKSON	19	2	
#MODELNAME#	PLOT SCALE * 100.0000 "/ in.	CHECKED - _____	REVISED - _____					CONTRACT NO. 78366				
	PLOT DATE * 11/19/2014	DATE - _____	REVISED - _____					ILLINOIS FED. AID PROJECT				

INDEX OF SHEETS

SHEET NO.	DESCRIPTION
1	COVER SHEET
2	SIGNATURE BLOCK
3	INDEX OF SHEETS; HIGHWAY STANDARDS; GENERAL NOTES
4-6	TYPICAL SECTIONS
7	SUMMARY OF QUANTITIES
8	RESURFACING SCHEDULE - FAP 42 (IL 13/127)
9-10	PAVEMENT MARKING SCHEDULE - FAP 42 (IL 13/127)
11-19	PLAN SHEETS - FAP 42 (IL 13/127) STA. 369+00 TO STA. 160+26.81

HIGHWAY STANDARDS

- 701422-07
- 701426-07
- 701901-04
- 780001-05
- 781001-03

GENERAL NOTES

THE AGGREGATE TO BE USED IN THE MICRO-SURFACING SHALL BE TYPE II APPLIED AT 16 LB/SQ YD PER PASS.

BITUMINOUS MATERIAL (PRIME COAT) SHALL BE APPLIED PRIOR TO PLACING THE FIRST PASS OF MICRO-SURFACING AT A RATE OF 0.05 - 0.10 GAL/SQ. YD.

THE QUANTITY OF SHORT TERM PAVEMENT MARKING SHOWN IN THE PLANS WAS BASED ON ONE APPLICATION EACH FOR 1 LAYER OF SURFACE TREATMENT.

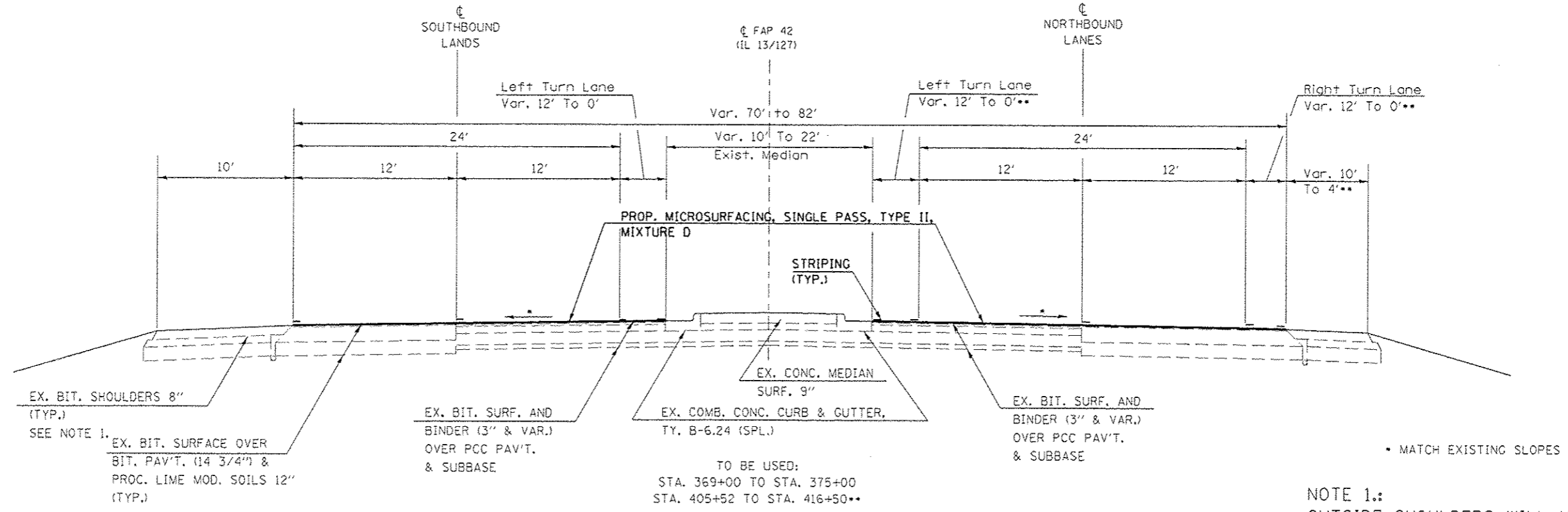
PRIOR TO PLACEMENT OF THE FINAL PAVEMENT MARKINGS THE RESIDENT ENGINEER SHALL CONTACT THE BUREAU OF OPERATIONS AND ARRANGE FOR INSPECTION AND APPROVAL OF THE PAVEMENT MARKING LAYOUT.

THE CONTRACTOR SHALL PRESERVE EXISTING STAMPED STATIONING.

THE CONTRACTOR SHOULD FOLLOW THE EXISTING HOT-MIX LAYOUT AS CLOSELY AS POSSIBLE. EACH INDIVIDUAL LANE SHOULD BE DONE EDGE TO EDGE IN ONE PASS.

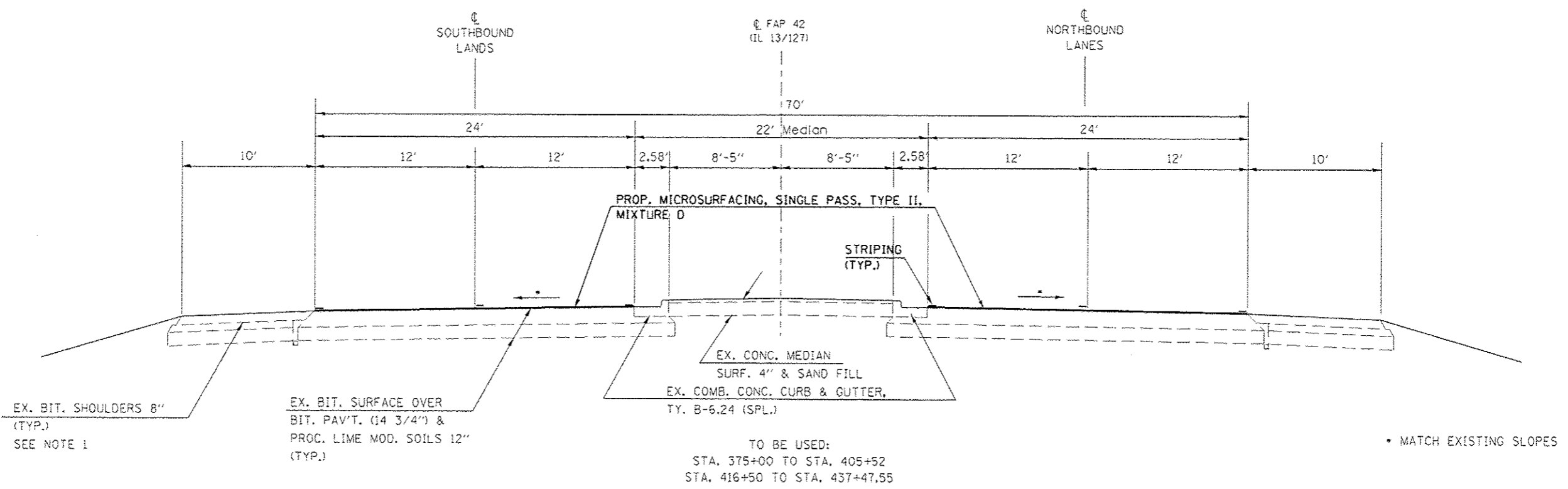
FILE NAME = c:\pwwork\pedit\mccordr\034239\78360-ht-pln.dgn USER NAME = mccordr PLOT SCALE = 100.0000' / 1" = 100' PLOT DATE = 12/9/2014				DESIGNED - DRAWN - CHECKED - DATE -				REVISED - REVISED - REVISED - REVISED -				STATE OF ILLINOIS DEPARTMENT OF TRANSPORTATION				INDEX OF SHEETS, STANDARDS AND GENERAL NOTES				F.A.P. RTE.		SECTION		COUNTY		TOTAL SHEETS		SHEET NO.	
SCALE:		SHEET OF		SHEETS		STA.		TO STA.		*FAP 42 (IL 13/127)										D9 PAVT PRESERV 2014-1		JACKSON		19		3			
												CONTRACT NO. 78366				ILLINOIS FED. AID PROJECT													

TYPICAL SECTION #1



NOTE 1:
OUTSIDE SHOULDERS WILL NOT BE MICROSURFACED.

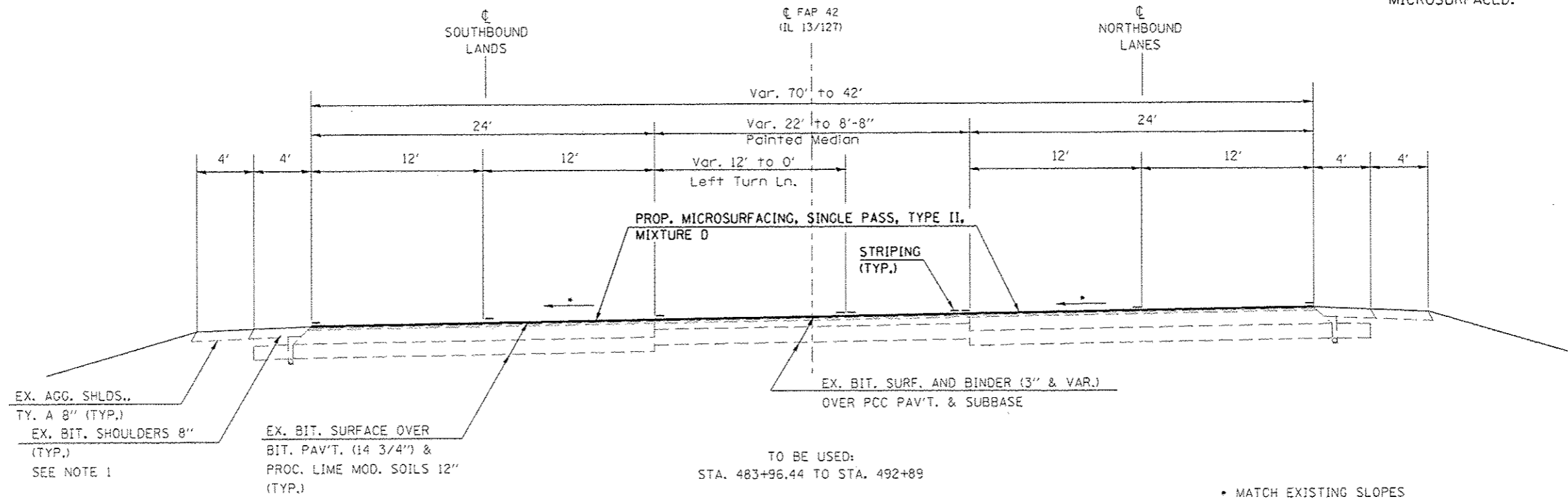
TYPICAL SECTION #2



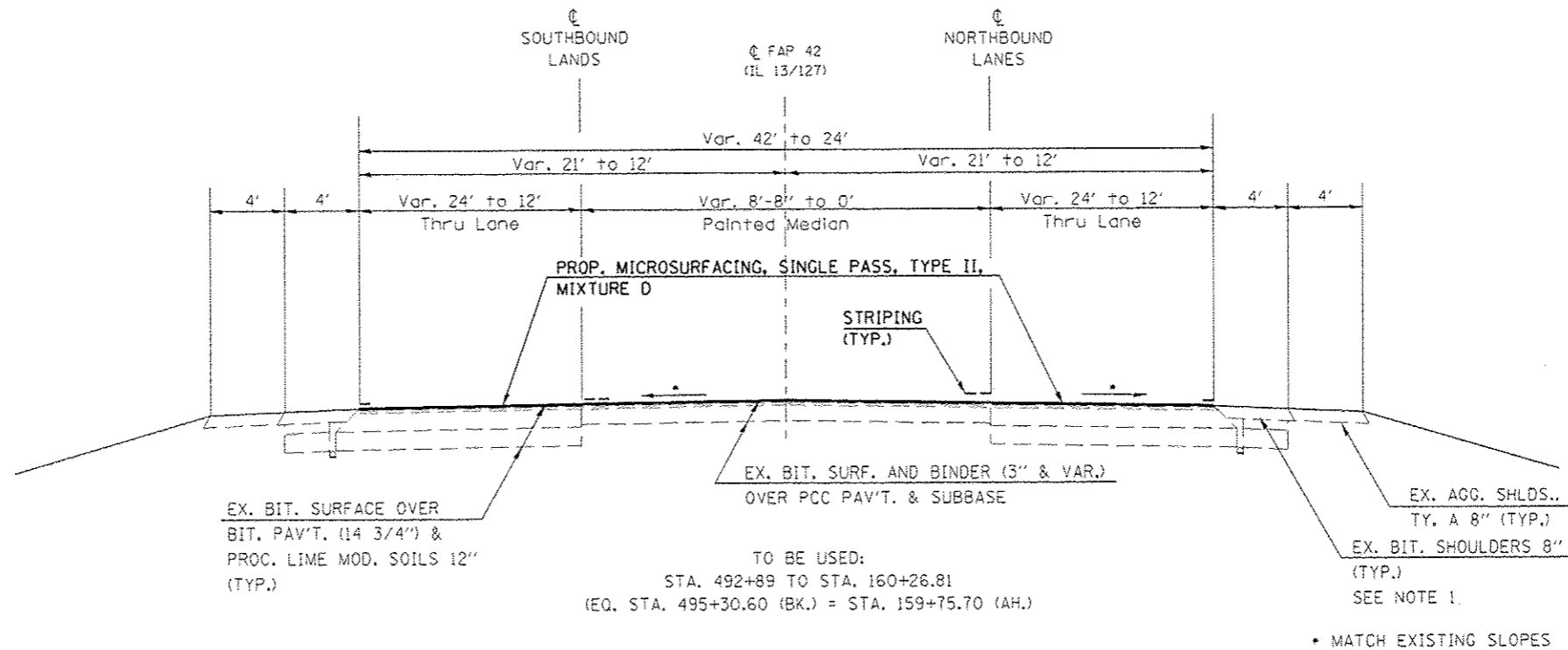
FILE NAME =	USER NAME = mecordkr	DESIGNED -	REVISED -	STATE OF ILLINOIS DEPARTMENT OF TRANSPORTATION	TYPICAL SECTIONS 1 & 2			*FAP 42 (IL 13/127)			
cr:\p-work\p\ids\me cordkr\102342339\78	20-1ht-p1n.dgn	DRAWN -	REVISED -					F.A.P. RTE.	SECTION	COUNTY	TOTAL SHEETS
Default	PLOT SCALE = 1/8" = 1' / 32"	CHECKED -	REVISED -		D9 PAVT PRESERV 2014-1 JACKSON 19 4						
	PLOT DATE = 12/9/2014	DATE -	REVISED -		CONTRACT NO. 78366				ILLINOIS FED. AID PROJECT		

TYPICAL SECTION #5

NOTE 1:
OUTSIDE SHOULDERS WILL NOT BE
MICROSURFACED.



TYPICAL SECTION #6



FILE NAME =	USER NAME = mboardr	DESIGNED -	REVISED -
cr:\work\pav\dot\mboardr\0342339\7836-shr-pln.dgn		DRAWN -	REVISED -
	PLOT SCALE = 1/8" = 1' / 32"	CHECKED -	REVISED -
Default	PLOT DATE = 12/4/2014	DATE -	REVISED -

STATE OF ILLINOIS
DEPARTMENT OF TRANSPORTATION

TYPICAL SECTIONS 5 & 6	
SCALE:	SHEET OF SHEETS STA. TO STA.

F.A.P. RATE.	SECTION	COUNTY	TOTAL SHEETS	SHEET NO.
•	D9 PAVT PRESERV 2014-1	JACKSON	19	6
ILLINOIS FED. AID PROJECT			CONTRACT NO. 78366	

•FAP 42 (IL 13/127)

SUMMARY OF QUANTITIES

FAP 42 (IL 13/127)

RURAL

100% STATE

MICROSURFACING

JACKSON

0005

CODE NUMBER	ITEM DESCRIPTION	UNIT	TOTAL QUANTITY
X0326218	FIBER-MODIFIED ASPHALT CRACK SEALING	FOOT	64094
Z0063804	MICROSURFACING, SINGLE PASS, TYPE II, MIXTURE D	SQ YD	83188
40600275	BITUMINOUS MATERIALS (PRIME COAT)	POUND	37,435
67100100	MOBILIZATION	L SUM	1
70100320	TRAFFIC CONTROL AND PROTECTION, STANDARD 701422	L SUM	1
70100330	TRAFFIC CONTROL AND PROTECTION, STANDARD 701426	L SUM	1
70300100	SHORT- TERM PAVEMENT MARKING	FOOT	4895
70300210	TEMPORARY PAVEMENT MARKING - LETTERS & SYMBOLS	SQ FT	556.2
70300220	TEMPORARY PAVEMENT MARKING - LINE 4"	FOOT	57048
70300260	TEMPORARY PAVEMENT MARKING - LINE 12"	FOOT	545
70300280	TEMPORARY PAVEMENT MARKING - LINE 24"	FOOT	104
70301000	WORK ZONE PAVEMENT MARKING REMOVAL	SQ FT	4417
* 78000100	THERMOPLASTIC PAVEMENT MARKING, LETTERS & SYMBOLS	SQ FT	556.2
* 78000200	THERMOPLASTIC PAVEMENT MARKING - LINE 4"	FOOT	57048
* 78000600	THERMOPLASTIC PAVEMENT MARKING - LINE 12"	FOOT	545
* 78000650	THERMOPLASTIC PAVEMENT MARKING - LINE 24"	FOOT	104
* 78100100	RAISED REFLECTIVE PAVEMENT MARKER	EACH	478
78300100	PAVEMENT MARKING REMOVAL	SQ FT	19579
78300200	RAISED REFLECTIVE PAVEMENT MARKER REMOVAL	EACH	478

* SPECIALTY ITEM

*FAP 42 (IL 13/127)

FAP 42 (IL 13/127) MICROSURFACING SCHEDULE

LOCATION - STATION TO STATION	LENGTH (FT)	PAVEMENT WIDTH (FT)	PAVEMENT AREA (SQ YD)	MICRO-SURF., SINGLE PASS, TY. II, MIX. D CROSSOVERS AND TURN LANES				MICRO-SURF., SINGLE PASS, TY. II, MIX. D DRIVING LANES (SQ YD)	BIT. MATLS. (PR. CT.) (LBS)	FIBER-MOD. ASPHALT CR. SEAL (SEE NOTE 1) (FOOT)	NOTES
				FOR INFORMATIONAL PURPOSE ONLY							
				LEFT TURN LANE (SQ YD)	MEDIAN CROSSOVER (SQ YD)	RIGHT TURN LANE (SQ YD)	MEDIAN SHOULDER (SQ YD)				
CL IL 13/127 Northbound Lanes - Sta. 369+79 to Sta. 160+26.81											
369+79 TO 410+50	4071	24.0	10856					10856	4885	8,142	
405+52 TO 410+00	448	12.0	444	444					200	448	AT INDUSTRIAL PARK DR.
405+52 TO 410+00	448	12' & VAR.	531			531			239	448	VAR. WIDTH TURN LANE
410+00 TO 411+00	100	22.0	245		245				110	100	INDUSTRIAL PARK DR.
410+50 TO 437+48	2698	24.0	7194					7194	3237	5,396	
432+47 TO 437+08	461	12.0	460	460					207	461	AT HARRISON RD.
437+08 TO 437+88	80	22.0	196		196				88	80	AT HARRISON RD.
437+48 TO 483+96	4649	24.0	12397					12397	5579	9,298	
LT. 437+82 TO 483+23	4541	10.0	5046				5046		2271	4,541	
469+08 TO 469+88	80	22.0	196		196				88	80	AT PRIVATE DR. EAST
478+01 TO 483+33	532	12.0	529	529					238	532	AT BR 13/KIMMEL BRIDGE RD.
483+33 TO 484+45	112	22.0	274		274				123	112	AT BR 13/KIMMEL BRIDGE RD.
483+96 TO 489+76	580	24.0	1546					1546	696	1,160	
484+45 TO 489+77	532	16' & VAR.	771		771				347	532	PAINTED MEDIAN
489+77 TO 495+31	554	22' & VAR.	677		677				305	554	PAINTED MEDIAN
489+76 TO 495+31	554	18.0	1109					1109	499	555	LANE VAR. 24' TO 12'
Eq. Sta. 495+30.60 (bk.) = Sta. 159+75.70											
159+76 TO 160+27	51	12.0	68					68	31	51	
Sub-Totals Northbound Lanes		20,490	260	42,538	1433	2359	531	5046	33,170	19,142	32,490
CL IL 13/127 Southbound Lanes - Sta. 369+00 to Sta. 495+30.60											
369+17 TO 410+50	4133	24.0	11,021					11021	4959	8,266	
369+17 TO 373+52	435	12.0	427	427					192	435	AT IL 149/6TH ST.
410+50 TO 437+48	2698	24.0	7,194					7194	3237	5,396	
411+00 TO 416+00	500	12.0	478	478					215	500	AT INDUSTRIAL PARK DR.
437+88 TO 443+42	554	12.0	559	559					252	554	AT HARRISON RD.
437+48 TO 483+96	4649	24.0	12397					12397	5579	9,298	
RT. 438+06 TO 483+14	4508	10.0	5009				5009		2254	4,508	
469+88 TO 473+37	349	12.0	313	313					141	349	AT PRIVATE DR. EAST
483+96 TO 489+76	580	24.0	1,546					1546	696	1,160	
484+45 TO 489+77	532	12.0	529	529					238	532	AT BR 13/KIMMEL BRIDGE RD.
489+76 TO 495+31	554	18.0	1,109					1109	499	555	LANE VAR. 24' TO 12'
Eq. Sta. 495+30.60 (bk.) = Sta. 159+75.70											
159+76 TO 160+27	51	12.0	68					68	31	51	
Sub-Totals Southbound Lanes		19,543	196	40,650	2306	0	0	5009	33,335	18,293	31,604
TOTALS FAP 42 (IL 13/127)								83,188	37,435	64,094	

Note 1: Fiber-Modified Asphalt Crack Seal is calculated using 1 lb. of material per 2.8 lineal foot. Use 1 strip each for each lane, crossover and turn lane on IL 13/127 through the length of the project, unless otherwise noted on plans.

PAVEMENT MARKING SCHEDULE

FAP 42 (IL 13/127)

STATION TO STATION	THERMOPLASTIC PAVEMENT MARKING						TEMPORARY				NOTES		
	4 INCH WHITE	4 INCH YELLOW	4 INCH (SKIP-DASH YELLOW)	12 INCH (DIAGONALS)	24 INCH (STOP BARS)	LETTERS & SYMBOLS	4 INCH	12 INCH	24 INCH	LETTERS & SYMBOLS			
	FOOT	FOOT	FOOT	FOOT	FOOT	SQ FT	FOOT	FOOT	FOOT	SQ FT			
CL FAP 42 MEDIAN - Sta. 369+79 to Sta. 495+30.60													
R+	369+79.0	To	410+00.0	4,021		1,005				5,026			NB Lanes
R+	369+79.0	To	410+00.0		4,021					4,021			NB Lanes
L+	369+03.0							12			12		SB Lanes
L+	369+00.0	To	410+00.0		4,100	1,025				5,125			SB Lanes
L+	369+00.0	To	409+07.0	4,007						4,007			SB Lanes
L+	370+45.0											15.6	Left Turn Arrow
L+	371+03.0											20.8	"ONLY"
R+	407+92.0											20.8	"ONLY"
R+	408+50.0											15.6	Left Turn Arrow
R+	407+92.0											20.8	"ONLY"
R+	408+50.0											15.6	Right Turn Arrow
R+	410+03.0							12			12		
R+	410+22.0							24			24		
Industrial Park Dr. Intersection - Sta. 410+49.76													
L+	410+80.0							44			44		
R+	412+00.0	To	436+88.0	2,488						2,488			NB Lanes
L+	411+00.0							12			12		
L+	412+41.0									15.6		15.6	Left Turn Arrow
L+	412+99.0									20.8		20.8	"ONLY"
R+	411+00.0	To	437+08.0		2,608					2,608			NB Lanes
R+	411+00.0	To	495+30.6			2,108				2,108			NB Lanes
L+	411+00.0	To	437+08.0		2,608					2,608			SB Lanes
L+	411+00.0	To	495+30.6			2,108				2,108			SB Lanes
L+	411+70.0	To	436+65.0	2,495						2,495			SB Lanes
R+	434+89.0									20.8		20.8	"ONLY"
R+	435+47.0									15.6		15.6	Left Turn Arrow
R+	436+36.0									20.8		20.8	"ONLY"
R+	436+94.0									15.6		15.6	Left Turn Arrow
Harrison Rd. Intersection - Sta. 437+47.55													
R+	438+30.0	To	469+08.0	3,078						3,078			NB Lanes
R+	469+88.0	To	482+78.0	1,290						1,290			NB Lanes
R+	437+88.0	To	469+08.0		3,120					3,120			NB Lanes
R+	469+88.0	To	483+33.0		1,345					1,345			NB Lanes
L+	437+68.0									15.6		15.6	Left Turn Arrow
L+	438+26.0									20.8		20.8	"ONLY"
L+	439+96.0									15.6		15.6	Left Turn Arrow
L+	440+54.0									20.8		20.8	"ONLY"
L+	437+88.0	To	469+08.0		3,120					3,120			SB Lanes

FILE NAME =	USER NAME = mccordkr	DESIGNED -	REVISED -
ei:\pw\work\p\dot\mccordkr\0342339\78366-sh1-pln.dgn		DRAWN -	REVISED -
Default	PLOT SCALE = 100.0000' / in.	CHECKED -	REVISED -
	PLOT DATE = 12/9/2014	DATE -	REVISED -

STATE OF ILLINOIS
DEPARTMENT OF TRANSPORTATION

PAVEMENT MARKING SCHEDULE

SCALE: SHEET OF SHEETS STA. TO STA.

F.A.P. RTE.	SECTION	COUNTY	TOTAL SHEETS	SHEET NO.
*	D9 PAVT PRESERV 2014-1	JACKSON	19	9
			CONTRACT NO. 78366	
ILLINOIS FED. AID PROJECT				

*FAP 42 (IL 13/127)

PAVEMENT MARKING SCHEDULE (CONT.)

FAP 42 (IL 13/127)

STATION TO STATION				THERMOPLASTIC PAVEMENT MARKING						TEMPORARY				NOTES
				4 INCH WHITE	4 INCH YELLOW	4 INCH (SKIP-DASH YELLOW)	12 INCH (DIAGONALS)	24 INCH (STOP BARS)	LETTERS & SYMBOLS	4 INCH	12 INCH	24 INCH	LETTERS & SYMBOLS	
				FOOT	FOOT	FOOT	FOOT	FOOT	SQ FT	FOOT	FOOT	FOOT	SQ FT	
Private Dr. Ent. - Sta. 469+47.46														
L+	469+88.0	To	483+33.0		1,345					1,345				SB Lanes
L+	438+10.0	To	482+75.0	4,465						4,465				SB Lanes
L+	470+31.0								15.6				15.6	Left Turn Arrow
L+	470+89.0								20.8				20.8	"ONLY"
R+	480+82.0								20.8				20.8	"ONLY"
R+	481+40.0								15.6				15.6	Left Turn Arrow
R+	482+38.0								20.8				20.8	"ONLY"
R+	482+96.0								15.6				15.6	Left Turn Arrow
B. R. 13/Kimmel Bridge Rd. - Sta. 483+96.44														
R+	484+45.0	To	495+30.6	1,086						1,086				NB Lanes
R+	484+45.0	To	495+30.6		1,086					1,086				NB Lanes
L+	484+60.0								15.6				15.6	Left Turn Arrow
L+	485+18.0								20.8				20.8	"ONLY"
L+	486+30.0								15.6				15.6	Left Turn Arrow
L+	486+88.0								20.8				20.8	"ONLY"
L+	484+45.0	To	495+30.6		1,086					1,086				SB Lanes
L+	485+40.0	To	495+30.6	991						991				SB Lanes
R+	487+00.0								41.5				41.5	Drop Lane Arrow
R+	489+00.0								41.5				41.5	Drop Lane Arrow
Eq. Sta. 495+30.60 (bk.) = Sta. 159+75.70														
R+	159+75.7	To	160+26.0	50		13				63				NB Lanes
R+	159+75.7	To	160+26.0		50					50				NB Lanes
L+	159+75.7	To	160+26.0		50					50				SB Lanes
L+	159+75.7	To	160+26.0	50		13				63				SB Lanes
Turn Lanes														
L+	369+03.0	To	371+21.0	218						218				Left Turn Lane
R+	407+82.0	To	410+22.0	240						240				Left Turn Lane
R+	407+82.0	To	409+80.0	198						198				Right Turn Lane
R+	409+80.0	To	410+35.0	169						169				Painted Island
L+	410+80.0	To	413+17.0	237						237				Left Turn Lane
R+	434+79.0	To	437+08.0	229						229				Left Turn Lane
L+	437+88.0	To	440+72.0	284						284				Left Turn Lane
L+	469+88.0	To	471+07.0	119						119				
R+	480+72.0	To	483+33.0	261						261				
L+	484+45.0	To	487+06.0	261						261				
R+	484+45.0	To	495+30.6				540				540			
R+	159+75.7	To	160+26.0				5				5			
Sub-Totals FAP 42				26,237	24,539	6,272	545	104	556.2	57,048	545	104	556.2	
TOTALS				57,048			545	104	556.2	57,048	545	104	556.2	

FILE NAME =	USER NAME = mccordkr	DESIGNED -	REVISED -
e:\pwork\pwork\mccordkr\0342339\78366-sh1.pln.dgn		DRAWN -	REVISED -
Default	PLOT SCALE = 100.0000' / 1in.	CHECKED -	REVISED -
	PLOT DATE = 12/9/2014	DATE -	REVISED -

STATE OF ILLINOIS
DEPARTMENT OF TRANSPORTATION

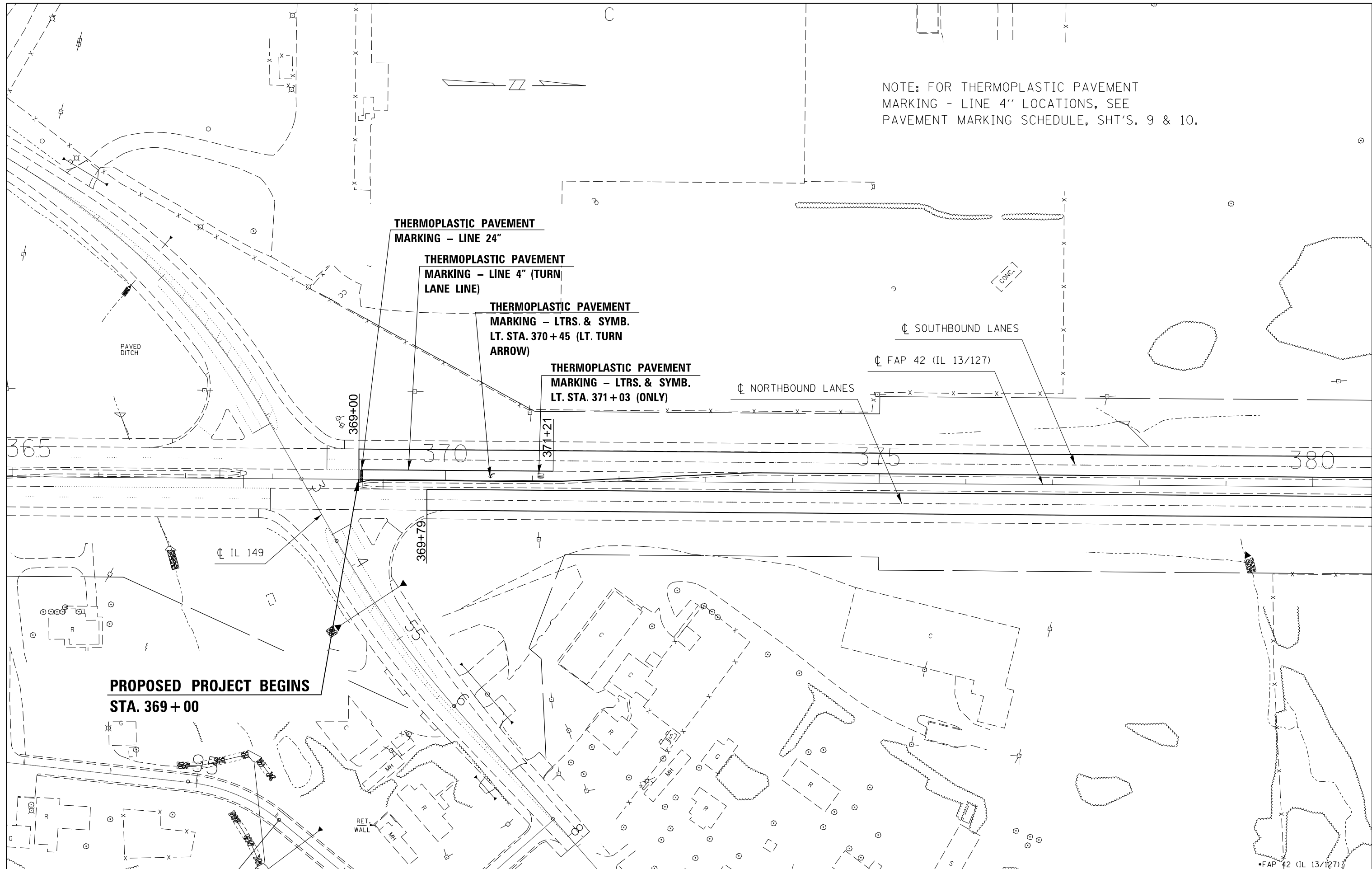
PAVEMENT MARKING SCHEDULE
(CONTINUED)

SCALE: SHEET OF SHEETS STA. TO STA.

F.A.P. RTE.	SECTION	COUNTY	TOTAL SHEETS	SHEET NO.
D9 PAVT PRESERV 2014-1		JACKSON	19	10
			CONTRACT NO. 78366	
ILLINOIS FED. AID PROJECT				

*FAP 42 (IL 13/127)

NOTE: FOR THERMOPLASTIC PAVEMENT MARKING - LINE 4" LOCATIONS, SEE PAVEMENT MARKING SCHEDULE, SHT'S. 9 & 10.



**PROPOSED PROJECT BEGINS
STA. 369+00**

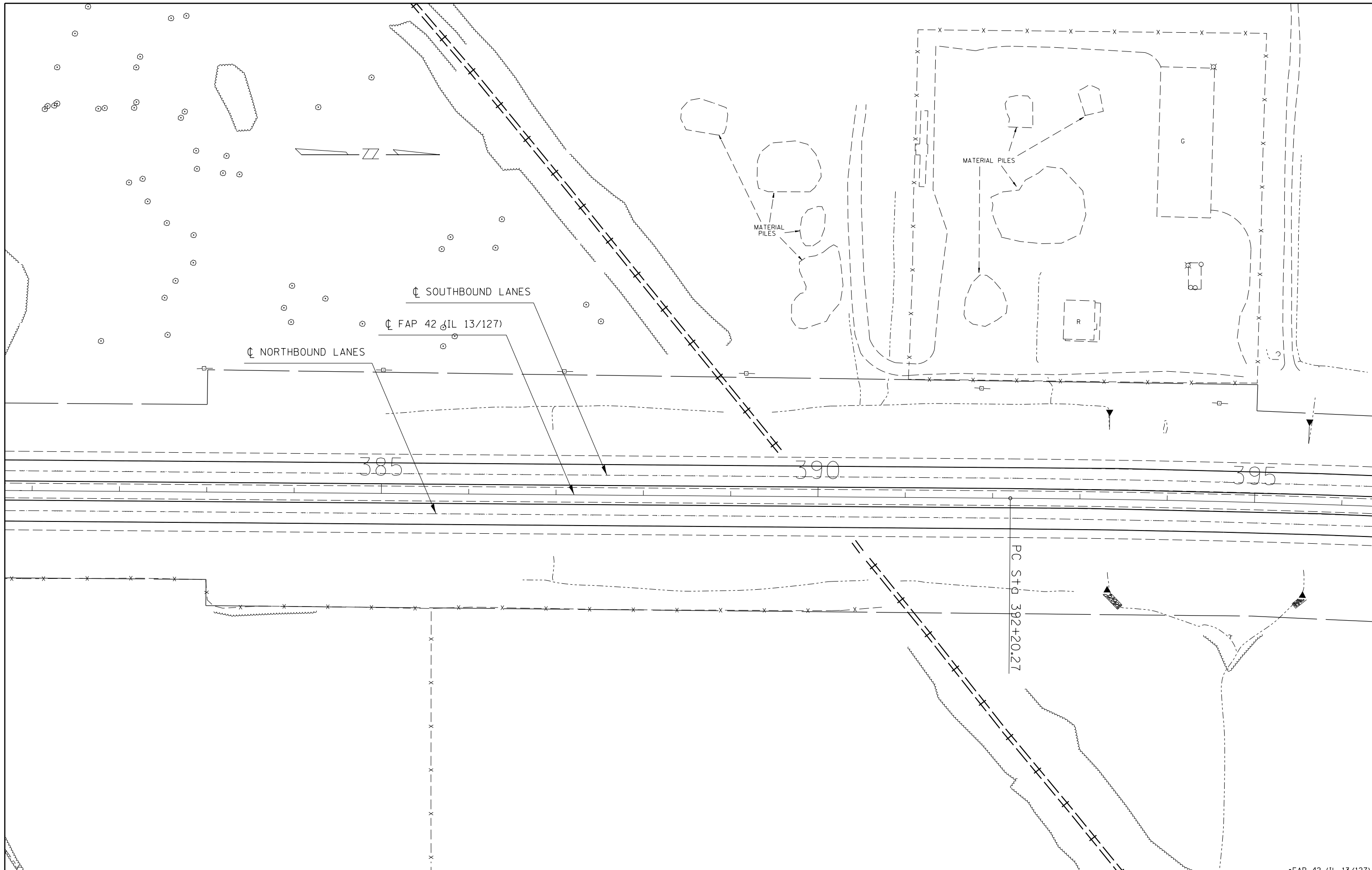
FILE NAME =	USER NAME = mccordkr	DESIGNED -	REVISED -
ei:\pwwork\pwwork\mccordkr\ad0342339\78366-sh1.pln.dgn		DRAWN -	REVISED -
Default		CHECKED -	REVISED -
	PLOT SCALE = 100.0000' / in.	DATE -	REVISED -
	PLOT DATE = 12/9/2014		

**STATE OF ILLINOIS
DEPARTMENT OF TRANSPORTATION**

PLAN SHEET 1

SCALE: SHEET OF SHEETS STA. TO STA.

F.A.P. RTE.	SECTION	COUNTY	TOTAL SHEETS	SHEET NO.
D9 PAVT PRESERV 2014-1		JACKSON	19	11
			CONTRACT NO. 78366	
ILLINOIS FED. AID PROJECT				



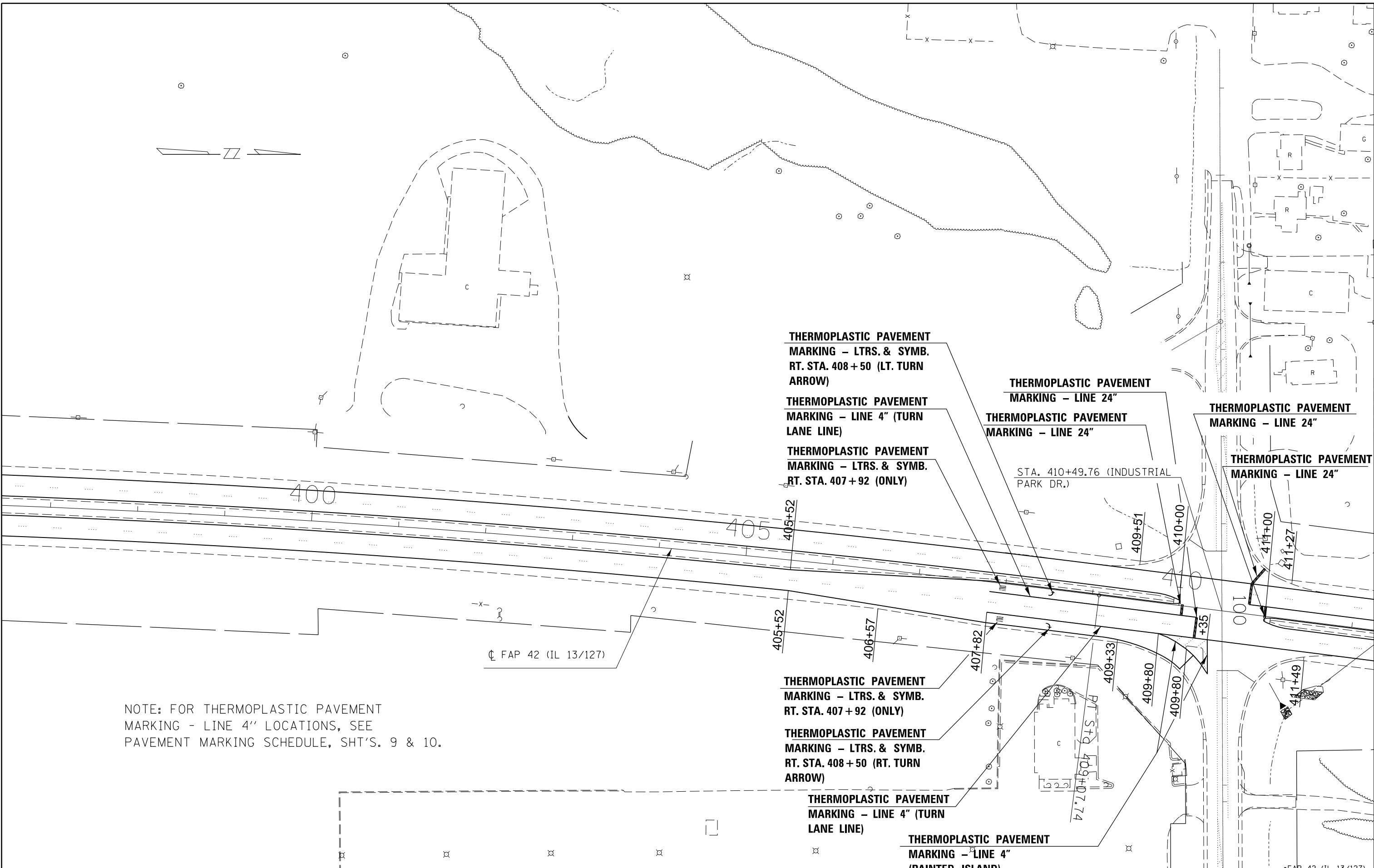
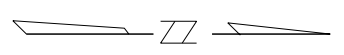
FILE NAME =	USER NAME = mccordkr	DESIGNED -	REVISED -
c:\pwork\work\pwork\mccordkr\ad0342339\78366-sh1.pln.dgn		DRAWN -	REVISED -
Default		CHECKED -	REVISED -
	PLOT SCALE = 100.0000' / in.	DATE -	REVISED -
	PLOT DATE = 12/9/2014		

**STATE OF ILLINOIS
DEPARTMENT OF TRANSPORTATION**

PLAN SHEET 2			
SCALE:	SHEET	OF SHEETS	STA. TO STA.

F.A.P. RTE.	SECTION	COUNTY	TOTAL SHEETS	SHEET NO.
D9 PAVT PRESERV 2014-1		JACKSON	19	12
CONTRACT NO. 78366				
ILLINOIS FED. AID PROJECT				

*FAP 42 (IL 13/127)



NOTE: FOR THERMOPLASTIC PAVEMENT MARKING - LINE 4" LOCATIONS, SEE PAVEMENT MARKING SCHEDULE, SHT'S. 9 & 10.

THERMOPLASTIC PAVEMENT MARKING - LTRS. & SYMB. RT. STA. 408 + 50 (LT. TURN ARROW)

THERMOPLASTIC PAVEMENT MARKING - LINE 4" (TURN LANE LINE)

THERMOPLASTIC PAVEMENT MARKING - LTRS. & SYMB. RT. STA. 407 + 92 (ONLY)

THERMOPLASTIC PAVEMENT MARKING - LINE 24" THERMOPLASTIC PAVEMENT MARKING - LINE 24"

THERMOPLASTIC PAVEMENT MARKING - LINE 24"

THERMOPLASTIC PAVEMENT MARKING - LINE 24"

THERMOPLASTIC PAVEMENT MARKING - LTRS. & SYMB. RT. STA. 407 + 92 (ONLY)

THERMOPLASTIC PAVEMENT MARKING - LTRS. & SYMB. RT. STA. 408 + 50 (RT. TURN ARROW)

THERMOPLASTIC PAVEMENT MARKING - LINE 4" (TURN LANE LINE)

THERMOPLASTIC PAVEMENT MARKING - LINE 4" (PAINTED ISLAND)

STA. 410+49.76 (INDUSTRIAL PARK DR.)

CL FAP 42 (IL 13/127)

*FAP 42 (IL 13/127)

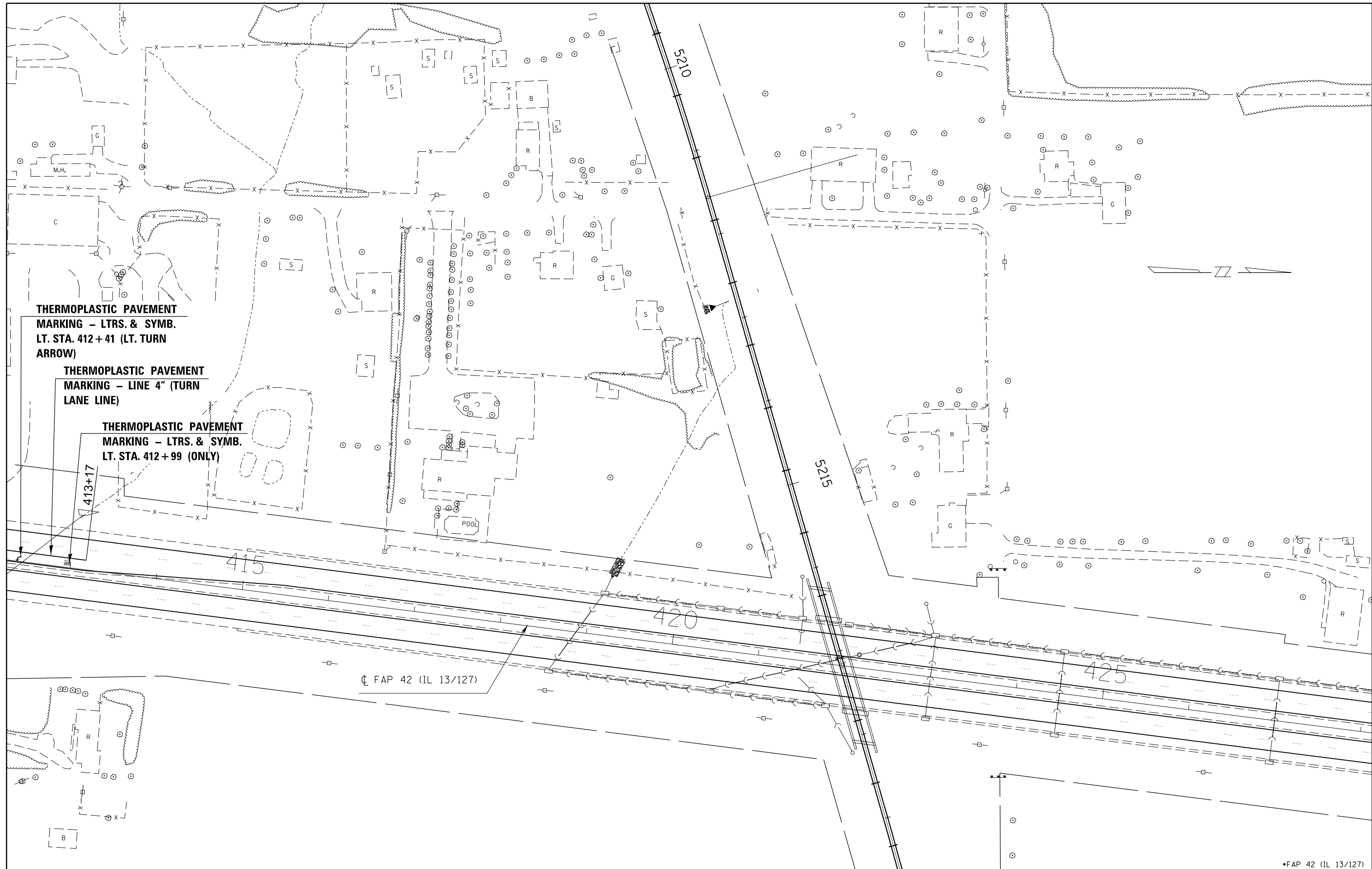
FILE NAME =	USER NAME = mccordkr	DESIGNED -	REVISED -
et:\pw\work\p\dot\mccordkr\ad0342339\78366-sh1-pln.dgn		DRAWN -	REVISED -
Default		CHECKED -	REVISED -
	PLOT DATE = 12/9/2014	DATE -	REVISED -

STATE OF ILLINOIS
DEPARTMENT OF TRANSPORTATION

PLAN SHEET 3

SCALE: SHEET OF SHEETS STA. TO STA.

F.A.P. RTE.	SECTION	COUNTY	TOTAL SHEETS	SHEET NO.
D9 PAVT PRESERV 2014-1		JACKSON	19	13
CONTRACT NO. 78366				
ILLINOIS FED. AID PROJECT				



THERMOPLASTIC PAVEMENT MARKING - LTRS. & SYMB. LT. STA. 412+41 (LT. TURN ARROW)

THERMOPLASTIC PAVEMENT MARKING - LINE 4" (TURN LANE LINE)

THERMOPLASTIC PAVEMENT MARKING - LTRS. & SYMB. LT. STA. 412+99 (ONLY)

413+17

415

420

425

⊕ FAP 42 (IL 13/127)

FILE NAME =	USER NAME = mccordkr	DESIGNED -	REVISED -
et:\pw\work\p\d042339\78366-sh1.pln.dgn		DRAWN -	REVISED -
Default	PLOT SCALE = 100.0000' / in.	CHECKED -	REVISED -
	PLOT DATE = 12/9/2014	DATE -	REVISED -

**STATE OF ILLINOIS
DEPARTMENT OF TRANSPORTATION**

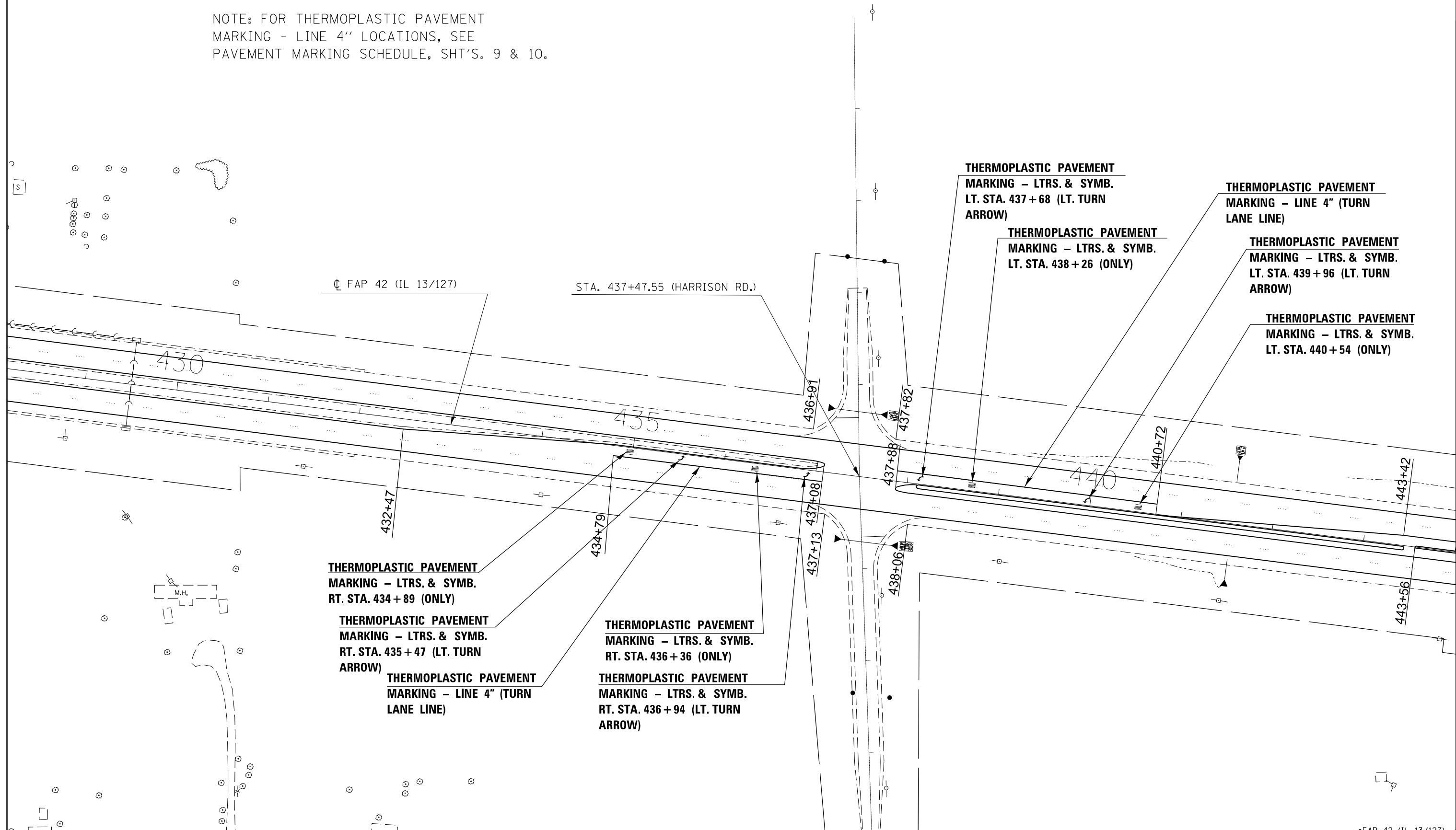
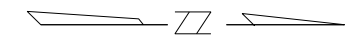
PLAN SHEET 4

SCALE: SHEET OF SHEETS STA. TO STA.

F.A.P. RTE.		SECTION	COUNTY	TOTAL SHEETS	SHEET NO.
•		D9 PAVT PRESERV 2014-1	JACKSON	19	14
CONTRACT NO. 78366					
ILLINOIS FED. AID PROJECT					

*FAP 42 (IL 13/127)

NOTE: FOR THERMOPLASTIC PAVEMENT MARKING - LINE 4" LOCATIONS, SEE PAVEMENT MARKING SCHEDULE, SHT'S. 9 & 10.



FILE NAME =	USER NAME = mccordkr	DESIGNED -	REVISED -
c:\pwwork\pwwork\mccordkr\0342339\78366-sh1.pln.dgn		DRAWN -	REVISED -
Default		CHECKED -	REVISED -
	PLOT SCALE = 100.0000' / in.	DATE -	REVISED -
	PLOT DATE = 12/9/2014		

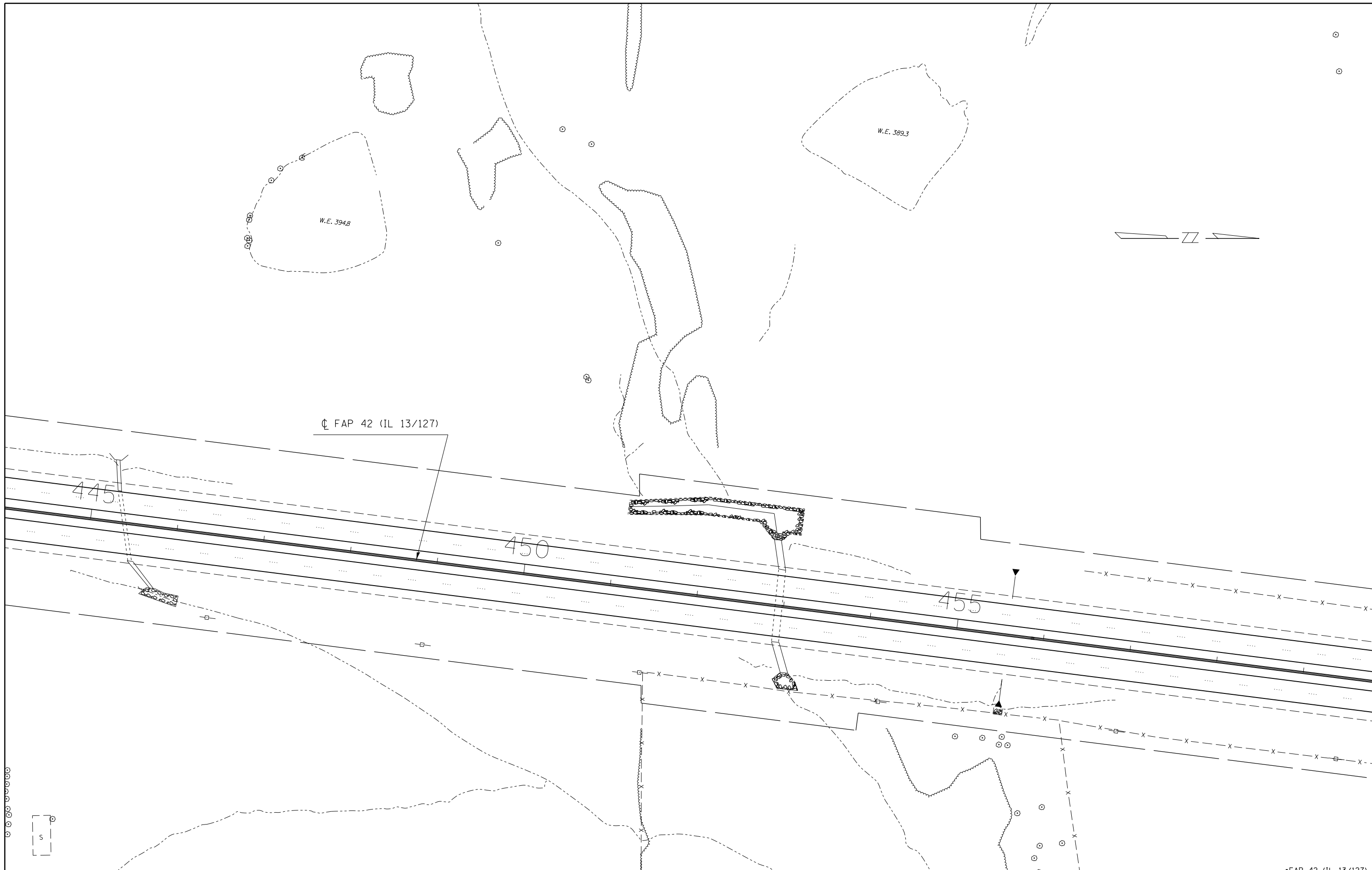
**STATE OF ILLINOIS
DEPARTMENT OF TRANSPORTATION**

PLAN SHEET 5

SCALE: SHEET OF SHEETS STA. TO STA.

F.A.P. RTE.	SECTION	COUNTY	TOTAL SHEETS	SHEET NO.
D9 PAVT PRESERV 2014-1		JACKSON	19	15
CONTRACT NO. 78366			ILLINOIS FED. AID PROJECT	

*FAP 42 (IL 13/127)



FILE NAME =	USER NAME = mcoordkr	DESIGNED -	REVISED -
c:\pwwork\pwwork\mcoordkr\ad0342339\78366-sh1.pln.dgn		DRAWN -	REVISED -
Default	PLOT SCALE = 100.0000' / in.	CHECKED -	REVISED -
	PLOT DATE = 12/9/2014	DATE -	REVISED -

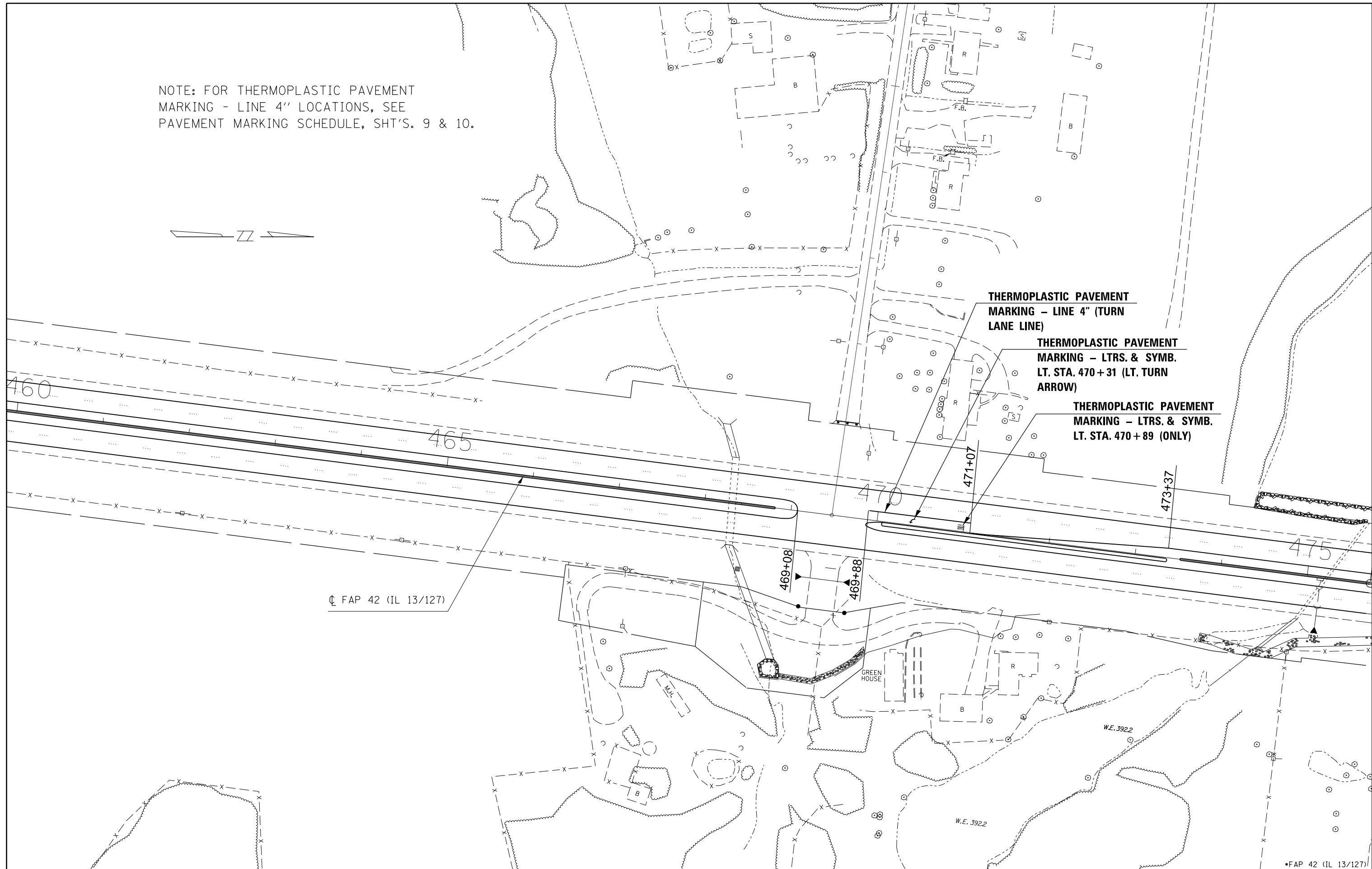
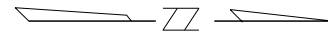
**STATE OF ILLINOIS
DEPARTMENT OF TRANSPORTATION**

PLAN SHEET 6			
SCALE:	SHEET	OF	SHEETS
	STA.		TO STA.

F.A.P. RTE.	SECTION	COUNTY	TOTAL SHEETS	SHEET NO.
D9 PAVT PRESERV 2014-1		JACKSON	19	16
			CONTRACT NO. 78366	
ILLINOIS FED. AID PROJECT				

*FAP 42 (IL 13/127)

NOTE: FOR THERMOPLASTIC PAVEMENT MARKING - LINE 4" LOCATIONS, SEE PAVEMENT MARKING SCHEDULE, SHT'S. 9 & 10.



THERMOPLASTIC PAVEMENT MARKING - LINE 4" (TURN LANE LINE)

THERMOPLASTIC PAVEMENT MARKING - LTRS. & SYMB. LT. STA. 470+31 (LT. TURN ARROW)

THERMOPLASTIC PAVEMENT MARKING - LTRS. & SYMB. LT. STA. 470+89 (ONLY)

CL FAP 42 (IL 13/127)

*FAP 42 (IL 13/127)

FILE NAME =	USER NAME = mccordkr	DESIGNED -	REVISED -
et:\pw\work\p\dot\mccordkr\ad0342339\78366-sh1.pln.dgn		DRAWN -	REVISED -
Default	PLOT SCALE = 100.0000' / in.	CHECKED -	REVISED -
	PLOT DATE = 12/9/2014	DATE -	REVISED -

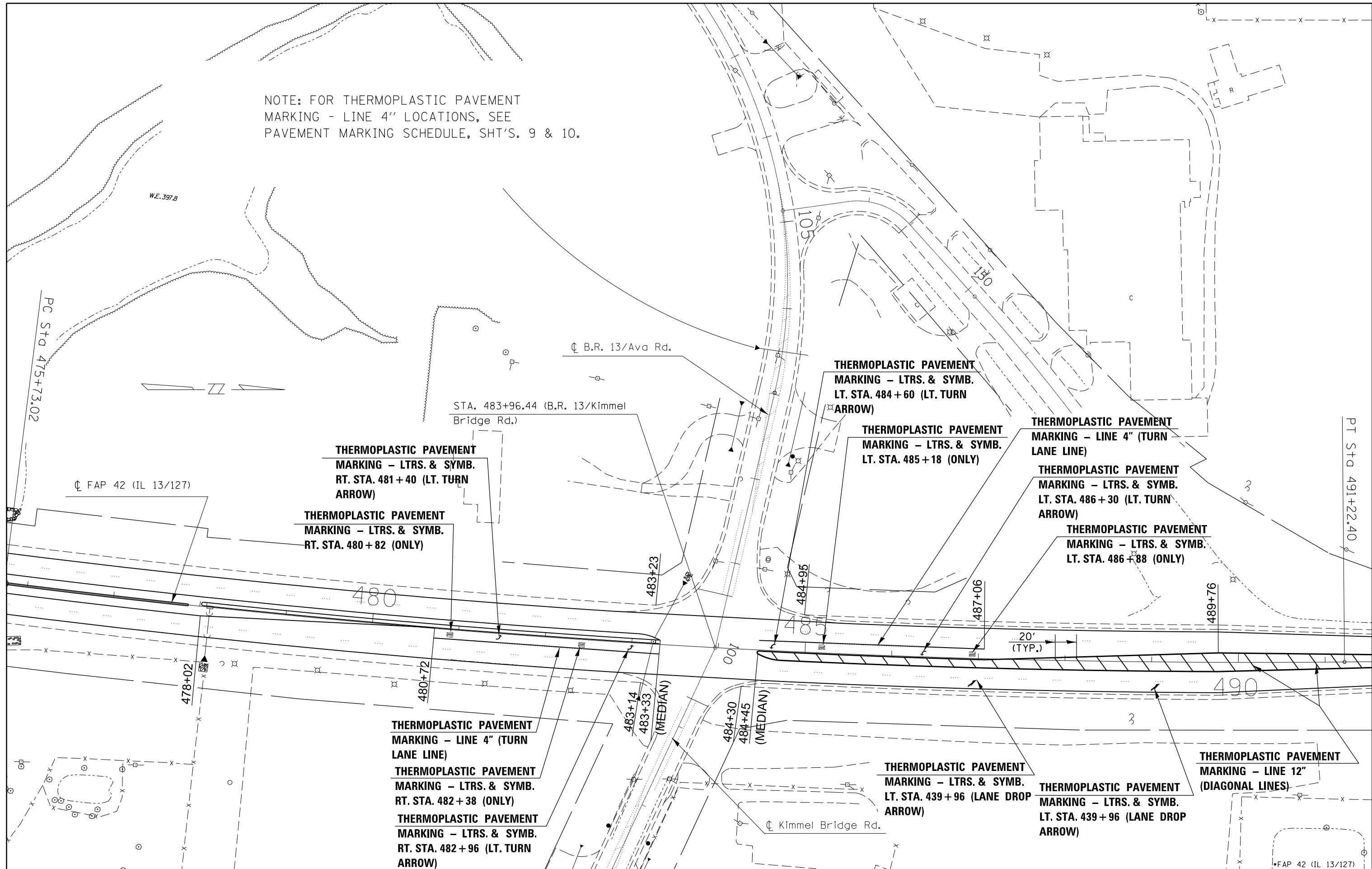
**STATE OF ILLINOIS
DEPARTMENT OF TRANSPORTATION**

PLAN SHEET 7

SCALE: SHEET OF SHEETS STA. TO STA.

F.A.P. RTE.	SECTION	COUNTY	TOTAL SHEETS	SHEET NO.
D9 PAVT PRESERV 2014-1 <td></td> <td>JACKSON</td> <td>19</td> <td>17</td>		JACKSON	19	17
CONTRACT NO. 78366			ILLINOIS FED. AID PROJECT	

NOTE: FOR THERMOPLASTIC PAVEMENT MARKING - LINE 4" LOCATIONS, SEE PAVEMENT MARKING SCHEDULE, SHT'S. 9 & 10.



THERMOPLASTIC PAVEMENT MARKING - LTRS. & SYMB. RT. STA. 481 + 40 (LT. TURN ARROW)

THERMOPLASTIC PAVEMENT MARKING - LTRS. & SYMB. RT. STA. 480 + 82 (ONLY)

THERMOPLASTIC PAVEMENT MARKING - LTRS. & SYMB. LT. STA. 484 + 60 (LT. TURN ARROW)

THERMOPLASTIC PAVEMENT MARKING - LTRS. & SYMB. LT. STA. 485 + 18 (ONLY)

THERMOPLASTIC PAVEMENT MARKING - LINE 4" (TURN LANE LINE)

THERMOPLASTIC PAVEMENT MARKING - LTRS. & SYMB. LT. STA. 486 + 30 (LT. TURN ARROW)

THERMOPLASTIC PAVEMENT MARKING - LTRS. & SYMB. LT. STA. 486 + 88 (ONLY)

THERMOPLASTIC PAVEMENT MARKING - LINE 4" (TURN LANE LINE)

THERMOPLASTIC PAVEMENT MARKING - LTRS. & SYMB. RT. STA. 482 + 38 (ONLY)

THERMOPLASTIC PAVEMENT MARKING - LTRS. & SYMB. RT. STA. 482 + 96 (LT. TURN ARROW)

THERMOPLASTIC PAVEMENT MARKING - LTRS. & SYMB. LT. STA. 439 + 96 (LANE DROP ARROW)

THERMOPLASTIC PAVEMENT MARKING - LTRS. & SYMB. LT. STA. 439 + 96 (LANE DROP ARROW)

THERMOPLASTIC PAVEMENT MARKING - LINE 12" (DIAGONAL LINES)

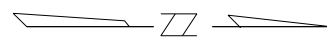
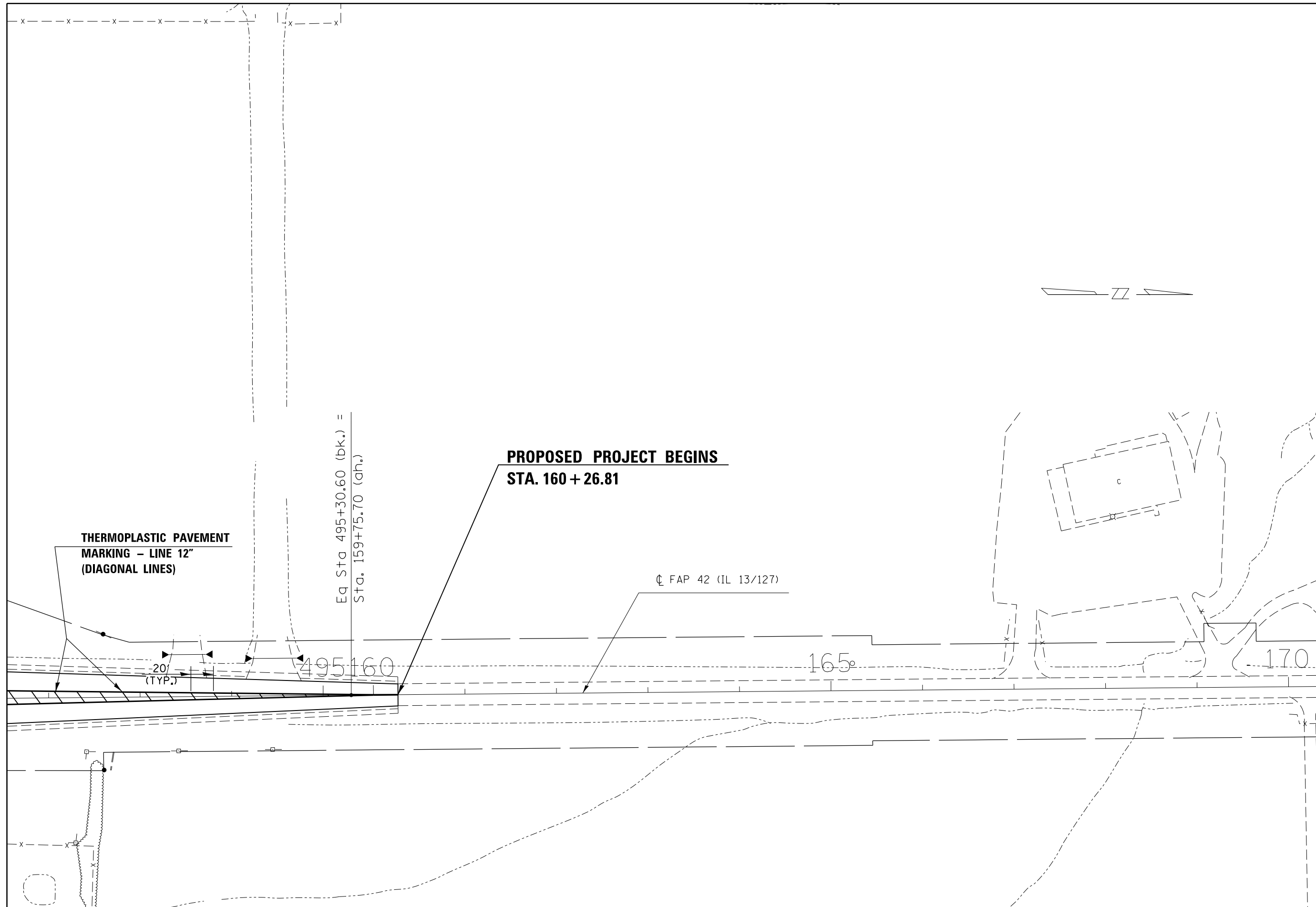
FILE NAME =	USER NAME = mccordkr	DESIGNED -	REVISED -
ei:\pwwork\pwwork\mccordkr\0342339\78366-sh1.pln.dgn		DRAWN -	REVISED -
Default	PLOT SCALE = 100.0000' / in.	CHECKED -	REVISED -
	PLOT DATE = 12/9/2014	DATE -	REVISED -

STATE OF ILLINOIS
DEPARTMENT OF TRANSPORTATION

PLAN SHEET 8

SCALE: SHEET OF SHEETS STA. TO STA.

F.A.P. RTE.	SECTION	COUNTY	TOTAL SHEETS	SHEET NO.
D9 PAVT PRESERV 2014-1		JACKSON	19	18
			CONTRACT NO. 78366	
ILLINOIS FED. AID PROJECT				



**THERMOPLASTIC PAVEMENT
MARKING - LINE 12"
(DIAGONAL LINES)**

Eq Sta 495+30.60 (bk.) =
Sta. 159+75.70 (ah.)

**PROPOSED PROJECT BEGINS
STA. 160 + 26.81**

☉ FAP 42 (IL 13/127)

20'
(TYP.)

495+160

165

170

•FAP 42 (IL 13/127)

FILE NAME = c:\pwwork\pwwork\mccordkr\0342339\78366-sh1-pln.dgn	USER NAME = mccordkr	DESIGNED -	REVISED -
Default	PLOT SCALE = 100.0000' / in.	DRAWN -	REVISED -
	PLOT DATE = 12/9/2014	CHECKED -	REVISED -
		DATE -	REVISED -

**STATE OF ILLINOIS
DEPARTMENT OF TRANSPORTATION**

PLAN SHEET 9

SCALE: SHEET OF SHEETS STA. TO STA.

F.A.P. RTE.	SECTION	COUNTY	TOTAL SHEETS	SHEET NO.
•	D9 PAVT PRESERV 2014-1	JACKSON	19	19
			CONTRACT NO. 78366	
ILLINOIS FED. AID PROJECT				