

STATE OF ILLINOIS  
DEPARTMENT OF TRANSPORTATION  
DIVISION OF HIGHWAYS

**PROPOSED  
HIGHWAY PLANS**

FAP ROUTE 789/CH 1A (IL 143/  
OLD ALTON EDWARDSVILLE RD.)  
SECTION 125-1HB-P, 1-HB-P

BRIDGE PAINTING  
MADISON COUNTY

C-98-063-14

F.A.P. RTE.	SECTION	COUNTY	TOTAL SHEETS	SHEET NO.
*	125-1HB-P, 1-HB-P	MADISON	13	1
		ILLINOIS	CONTRACT NO. 76H36	

\* FAP 789CH 1A

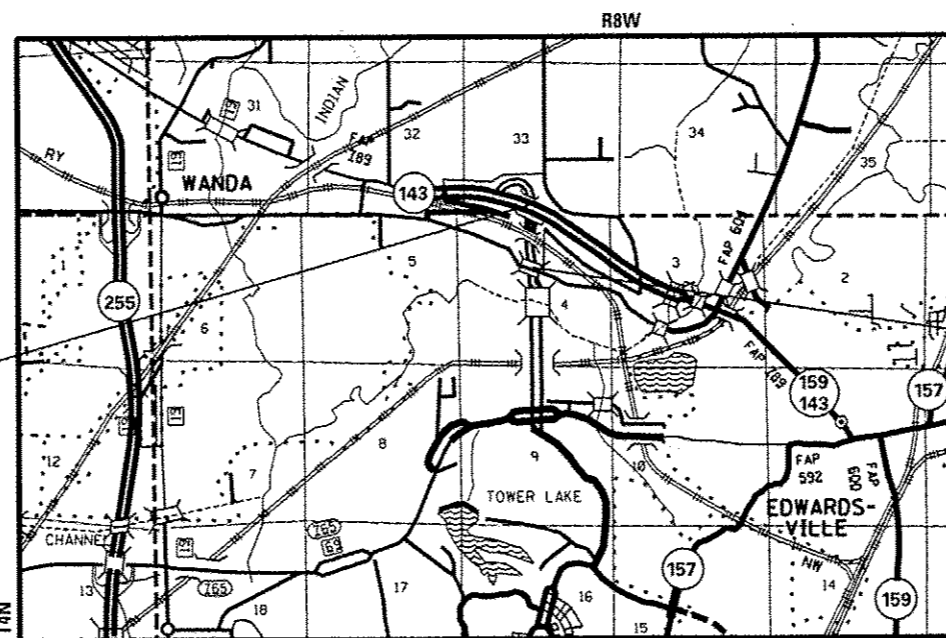
FOR INDEX OF SHEETS, SEE SHEET NO. 2

HIGHWAY CLASSIFICATION (SN 060-0191/SN 060-0192)

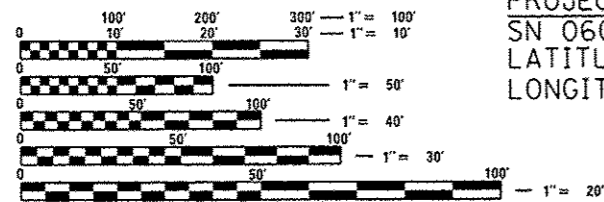
FAP 789 - IL 143  
Functional Class: Other Principal Arterial  
ADT: 10,250  
MU: 2.3% SU: 8.1%  
Design Speed: 55 mph  
Posted Speed: 55 mph

HIGHWAY CLASSIFICATION (SN 060-0160)

CH 1A - Old Alton Edwardsville Rd.  
Functional Class: Minor Arterial  
ADT: 500  
Design Speed: 35 mph  
Posted Speed: 30 mph



PROJECT LOCATION  
SN 060-0160  
LATITUDE: 38.827602  
LONGITUDE: -89.994320



FULL SIZE PLANS HAVE BEEN PREPARED USING STANDARD ENGINEERING SCALES. REDUCED SIZED PLANS WILL NOT CONFORM TO STANDARD SCALES. IN MAKING MEASUREMENTS ON REDUCED PLANS, THE ABOVE SCALES MAY BE USED.

J.U.L.I.E.  
JOINT UTILITY LOCATION INFORMATION FOR EXCAVATION  
1-800-892-0123  
OR 811

PROJECT ENGINEER: MICHAEL PRITCHETT (618) 346-3180  
DESIGNER: RAHSHUN J. MILLER (618) 346-3141

CONTRACT NO. 76H36

NOT TO SCALE

LOCATION MAP  
EDWARDSVILLE TOWNSHIP

IL 143 ADT  
2014 ADT: 10250  
2034 ADT: 12500  
MU = 2.3%  
SU = 8.1%

OLD ALTON EDWARDSVILLE RD. ADT  
2014 ADT: 500  
2034 ADT: 625  
MU = 2.3%  
SU = 8.1%

GROSS LENGTH = 590.5 FT. = 0.112 MILE  
NET LENGTH = 590.5 FT. = 0.112 MILE

STATE OF ILLINOIS  
DEPARTMENT OF TRANSPORTATION  
DIVISION OF HIGHWAYS

SUBMITTED *Oct 3 20 14*

*Jeffrey Z. Kasas*  
DEPUTY DIRECTOR OF HIGHWAYS, REGION 5 ENGINEER

*Jan 30 20 15*  
*John D. Baranzelli, P.E.*  
ENGINEER OF DESIGN AND ENVIRONMENT

*Jan 30 20 15*  
*Omer Osman, P.E.*  
DIRECTOR OF HIGHWAYS, CHIEF ENGINEER

PRINTED BY THE AUTHORITY  
OF THE STATE OF ILLINOIS

INDEX OF SHEETS

- 1 COVER SHEET
- 2 GENERAL NOTES, INDEX OF SHEETS & HIGHWAY STANDARDS
- 3 SUMMARY OF QUANTITIES
- 4-5 TYPICAL SECTION (SN 060-0191 & 060-0192)
- 6 PLAN & ELEVATION (SN 060-0191 & 060-0192)
- 7 PLAN SHEET (SN 060-0191 & 060-0192)
- 8 DETAIL SHEET (SN 060-0191 & 060-0192)
- 9 TYPICAL SECTION (SN 060-0160)
- 10 PLAN & ELEVATION (SN 060-0160)
- 11-12 PLAN SHEET (SN 060-0160)
- 13 DETAIL SHEET (SN 060-0160)

GENERAL NOTES

- 1. ILLINOIS STATE LAW REQUIRES A 48-HOUR NOTICE TO BE GIVEN TO UTILITIES BEFORE DIGGING. FIELD MARKING OF FACILITIES MAY BE OBTAINED BY CONTACTING J.U.L.I.E (1-800-892-0123 OR 811) OR FOR NON-MEMBERS, THE UTILITY COMPANY DIRECTLY.
- 2. A MINIMUM OF TWO AIR MONITORS WILL BE REQUIRED AT SN 060-0191 AND SN 060-0192. A MINIMUM OF ONE AIR MONITOR WILL BE REQUIRED AT SN 060-0160 TO MONITOR ABRASIVE BLASTING OPERATION, SEE SPECIAL PROVISIONS FOR "CONTAINMENT AND DISPOSAL OF LEAD PAINT CLEANING RESIDUES."
- 3. THE SSPC-QP1 AND SSPC-QP2 CERTIFICATIONS WILL BE REQUIRED FOR THE BRIDGES.
- 4. "CLEANING AND PAINTING OF THE EXISTING STRUCTURAL STEEL SHALL BE AS SPECIFIED IN THE SPECIAL PROVISION FOR "CLEANING AND PAINTING EXISTING STEEL STRUCTURES". ALL EXISTING STEEL SHALL BE CLEANED PER NEAR WHITE BLAST CLEANING--SSPC-SP10. ALL EXISTING STEEL SHALL BE PAINTED ACCORDING TO THE REQUIREMENTS OF PAINT SYSTEM 1 - OZ/E/U. THE COLOR OF THE FINAL FINISH COAT FOR ALL STEEL SURFACES SHALL BE GRAY, MUNSELL NO SB 7/1. (SN 060-0160, SN 060-0191 AND SN 060-0192)
- 5. ALL TURF AREA DISTURBED BY THE CONTRACTOR SHALL BE SEEDED WITH THE APPROPRIATE EROSION CONTROL AS DIRECTED BY THE RESIDENT ENGINEER/TECHNICIAN AT THE CONTRACTOR'S EXPENSE.
- 6. THE USE OF CONES SHALL NOT BE PERMITTED AT THIS LOCATION.
- 7. "ROAD CONSTRUCTION AHEAD" SIGNS SHALL BE PLACED AT EACH END OF THE PROJECT LOCATIONS AND ALL INTERSECTING SIDE ROADS AND WILL BE INCLUDED IN THE TRAFFIC CONTROL PAY ITEMS. ALL CONSTRUCTION SIGNS SHALL BE FLUORESCENT ORANGE. 48".
- 8. THE DEPARTMENT STRONGLY ENCOURAGES THE PRIME CONTRACTOR AND THEIR APPROVED SUB-CONTRACTORS TO HIRE MINORITY, WOMEN AND DISADVANTAGED INDIVIDUALS FROM ITS FEDERALLY FUNDED HIGHWAY CONSTRUCTION CAREERS TRAINING PROGRAM (HCCTP) TO HELP MEET WORKFORCE AND TRAINEE GOALS. THIS PROGRAM IS TRAINING MINORITIES, WOMEN AND DISADVANTAGED INDIVIDUALS IN HIGHWAY CONSTRUCTION-RELATED SKILLS, E.G., MATH FOR THE TRADES, JOB READINESS, TECHNICAL SKILLS COURSE WORK (CARPENTRY, CONCRETE FLATWORK, BLUEPRINT READING, SITE PLANS, SITE WORK, TOOLS USE, ETC.) AND OSHA 10 HOUR CERTIFICATION, TO PREPARE THEM FOR A CAREER IN THE HIGHWAY CONSTRUCTION TRADES. GRADUATES ARE WELL- TRAINED AND READY TO BECOME PRODUCTIVE ENTRY-LEVEL CONSTRUCTION WORKERS. CONTACT THE DISTRICT 8 EEO OFFICE AT 618-346-3360 AND/OR THE HCCTP COORDINATOR AT 618-874-6528 TO LEARN MORE ABOUT THE PROGRAM AND FOR ASSISTANCE IN MEETING WORKFORCE AND TRAINEE GOALS.
- 9. FLAGGERS SHALL BE PRESENT DURING ALL CLOSURE HOURS, INCLUDING LUNCH HOUR, AND NO ADDITIONAL COMPENSATION SHALL BE APPLIED.
- 10. PLAN DIMENSIONS AND DETAILS RELATIVE TO EXISTING PLANS ARE SUBJECT TO NOMINAL CONSTRUCTION VARIATIONS. THE CONTRACTOR SHALL FIELD VERIFY EXISTING DIMENTIONS AND DETAILS AFFECTING CONSTRUCTION AND MAKE NECESSARY APPROVED ADJUSTMENTS PRIOR TO CONSTRUCTION OR ORDERING MATERIALS. SUCH VARIATIONS SHALL NOT BE CAUSE FOR ADDITIONAL COMPESATION FOR A CHANGE IN SCOPE OF WORK. HOWEVER, THE CONTRACTOR WILL BE PAID FOR THE QUANTITY ACTUALLY FURNISHED AT THE UNIT PRICE BID FOR WORK.

HIGHWAY STANDARDS

000001-06	STANDARD SYMBOLS, ABBREVIATIONS AND PATTERNS
001006	DECIMAL OF AN INCH AND OF A FOOT
701101-04	OFF-RD OPERATIONS, MULTILANE 15' (4.5 M) TO 24' (600 MM) FROM PAVEMENT EDGE
701106-02	OFF-RD OPERATIONS, MULTILANE MORE THAN 15' (4.5 M) AWAY
701201-04	LANE CLOSURE, 2L, 2W, DAY ONLY, FOR SPEEDS ≥ 45 MPH
701422-07	LANE CLOSURE, MULTILANE, FOR SPEEDS ≥ 45 MPH TO 55 MPH
701456-03	PARTIAL EXIT RAMP CLOSURE FREEWAY/EXPRESSWAY
701501-06	URBAN LANE CLOSURE, 2L, 2W, UNDIVIDED
701901-04	TRAFFIC CONTROL DEVICES

COMMITMENTS  
NONE

• FAP 789CH 1A

FILE NAME =	USER NAME = milleraj	DESIGNED -	REVISED -	<b>STATE OF ILLINOIS DEPARTMENT OF TRANSPORTATION</b>	<b>GENERAL NOTES, INDEX OF SHEETS &amp; HIGHWAY STANDARDS</b>	F.A.P. RTE.	SECTION	COUNTY	TOTAL SHEETS	SHEET NO.
et:\pvc\work\pvd\dot\milleraj\08480172\0872\36-shr-plan.dgn	DRAWN -	REVISED -	•			125-IHB-P, 1-HB-P	MADISON	13	2	
PLOT SCALE = 100.0000' / 1"	CHECKED -	REVISED -	CONTRACT NO. 76H36							
PLOT DATE = 10/3/2014	DATE -	REVISED -	SCALE: NTS			SHEET NO. 1 OF 1 SHEETS	STA. TO STA.	FED. ROAD DIST. NO.	ILLINOIS FED. AID PROJECT	

000000

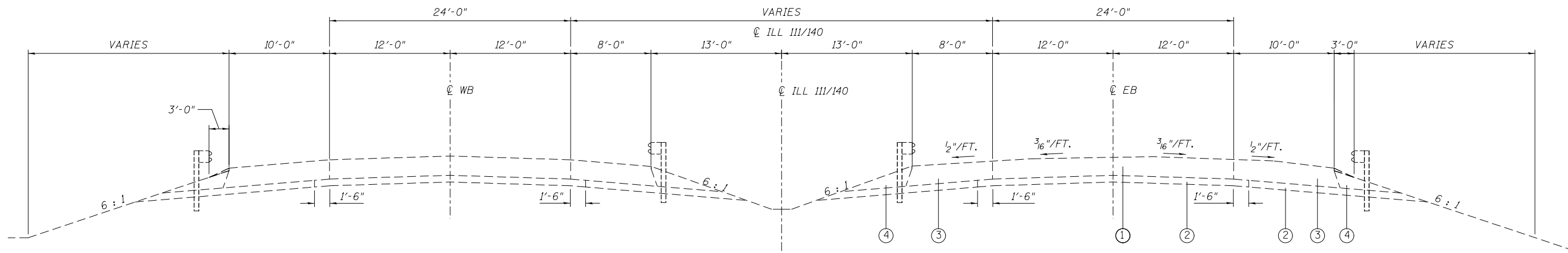
CODE NO.	ITEM	UNIT	TOTAL QUANTITY	CONSTRUCTION CODE		
				100 % STATE		
				BRIDGE 0014 060-0191	BRIDGE 0014 060-0192	BRIDGE 0014 060-0160
				URBAN		
67100100	MOBILIZATION	L SUM	1	0.33	0.33	0.34
70100320	TRAFFIC CONTROL AND PROTECTION, STANDARD 701422	L SUM	1	0.33	0.33	0.34
70100450	TRAFFIC CONTROL AND PROTECTION, STANDARD 701201	L SUM	1			1
70100825	TRAFFIC CONTROL AND PROTECTION, STANDARD 701456	L SUM	1	0.50	0.50	
70102620	TRAFFIC CONTROL AND PROTECTION, STANDARD 701501	L SUM	1			1
Z0007101	CONTAINMENT AND DISPOSAL OF LEAD PAINT CLEANING RESIDUES NO. 1	L SUM	1	1		
Z0007102	CONTAINMENT AND DISPOSAL OF LEAD PAINT CLEANING RESIDUES NO. 2	L SUM	1		1	
Z0007103	CONTAINMENT AND DISPOSAL OF LEAD PAINT CLEANING RESIDUES NO. 3	L SUM	1			1
Z0010501	CLEANING AND PAINTING STEEL BRIDGE NO. 1	L SUM	1	1		
Z0010502	CLEANING AND PAINTING STEEL BRIDGE NO. 2	L SUM	1		1	
Z0010503	CLEANING AND PAINTING STEEL BRIDGE NO. 3	L SUM	1			1

BRIDGE NO. 1: SN 060-0191  
 BRIDGE NO. 2: SN 060-0192  
 BRIDGE NO. 3: SN 060-0160

FILE NAME =	USER NAME = milleraj	DESIGNED -	REVISED -	<b>STATE OF ILLINOIS DEPARTMENT OF TRANSPORTATION</b>	<b>SUMMARY OF QUANTITIES</b>			F.A.P. RTE.	SECTION	COUNTY	TOTAL SHEETS	SHEET NO.
c:\pwork\pwork\millera\00480172\075136-sht-plan.dgn	DRAWN -	REVISED -	•					125-IHB-P, 1-HB-P	MONROE	13	3	
PLOT SCALE = 100.0000' / 1" =	CHECKED -	REVISED -	CONTRACT NO. 76H36									
PLOT DATE = 10/3/2014	DATE -	REVISED -	SCALE: NTS		SHEET NO. 1 OF 1 SHEETS	STA.	TO STA.	FED. ROAD DIST. NO.	ILLINOIS FED. AID PROJECT			

\* FAP 789CH 1A

SN 060-0191(WB) & 060-0192(EB)



TYPICAL APPROACH SECTION (LOOKING EAST)

- ① EXISTING 8" CRC PAVEMENT
- ② EXISTING 4" STABILIZED SUBBASE
- ③ EXISTING HMA SHOULDER
- ④ EXISTING AGGREGATE SHOULDERS

\* FAP 789/CH 1A

FILE NAME =	USER NAME = milleraj	DESIGNED -	REVISED -
et:\pw\work\p\dot\milleraj\0400172\d87	h36-sht-plan.dgn	DRAWN -	REVISED -
	PLOT SCALE = 100.0000' / in.	CHECKED -	REVISED -
	PLOT DATE = 10/3/2014	DATE -	REVISED -

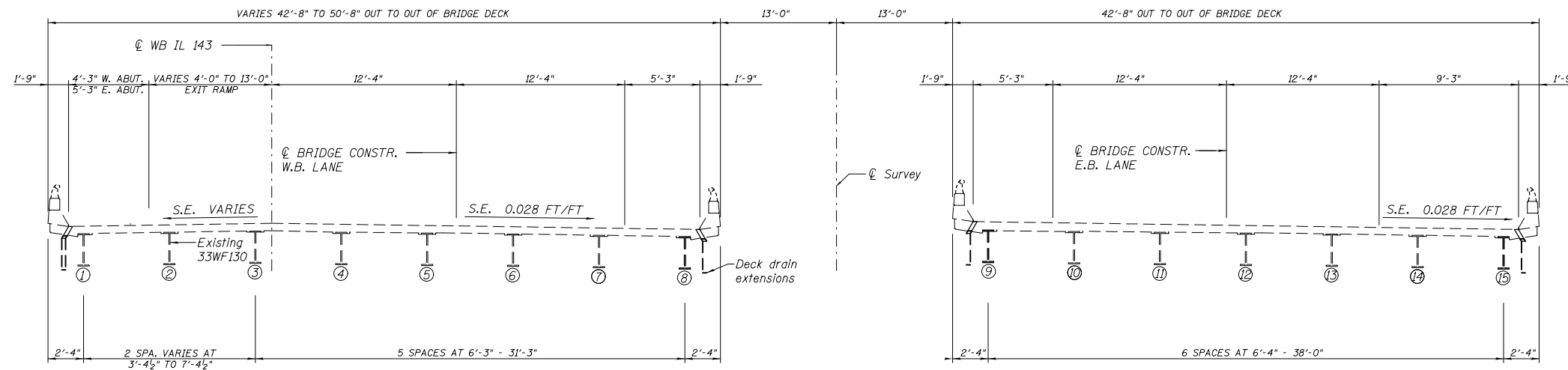
STATE OF ILLINOIS  
DEPARTMENT OF TRANSPORTATION

TYPICAL SECTION

SCALE: NTS SHEET NO. 1 OF 1 SHEETS STA. TO STA.

F.A.P. RTE.	SECTION	COUNTY	TOTAL SHEETS	SHEET NO.
*	125-1HB-P, 1-HB-P	MADISON	13	4
CONTRACT NO. 76H36				
FED. ROAD DIST. NO. ILLINOIS FED. AID PROJECT				

SN 060-0191(WB) & 060-0192(EB)



**North Bridge (WB)**  
**SN 060-0191**  
**(Looking East)**

**South Bridge (EB)**  
**SN 060-0192**  
**(Looking East)**

FILE NAME =	USER NAME = milleraj	DESIGNED -	REVISED -
et:\pw\work\p\dot\milleraj\0400172\d87	h36-sht-plan.dgn	DRAWN -	REVISED -
	PLOT SCALE = 100.0000' / in.	CHECKED -	REVISED -
	PLOT DATE = 10/3/2014	DATE -	REVISED -

**STATE OF ILLINOIS**  
**DEPARTMENT OF TRANSPORTATION**

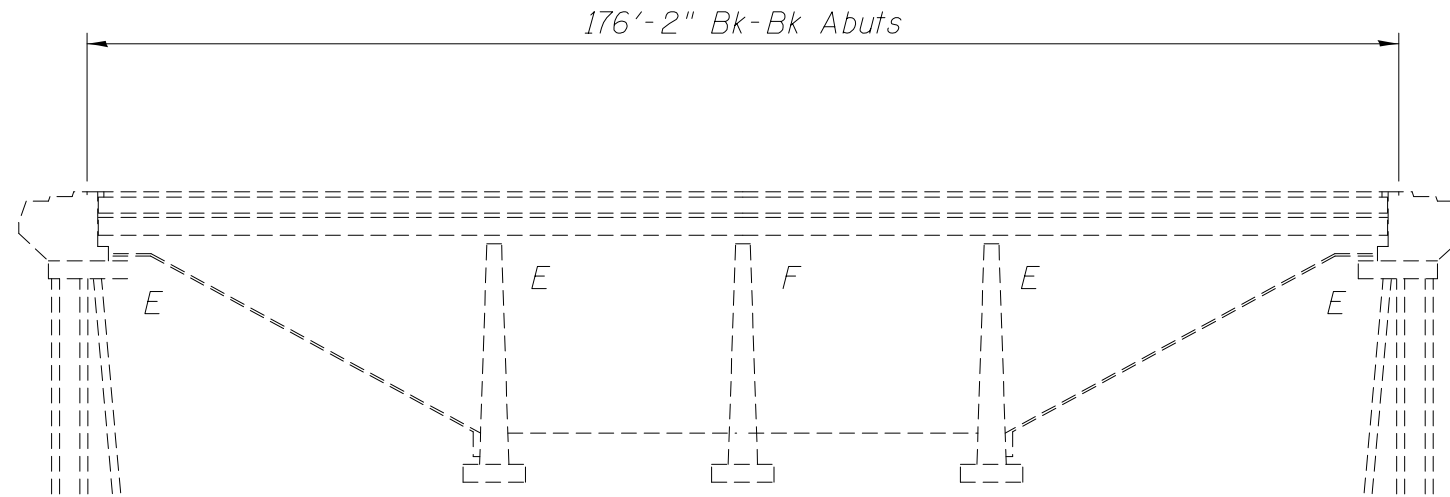
**PLAN & ELEVATION**

SCALE: NTS      SHEET NO. 1 OF 2 SHEETS      STA.      TO STA.

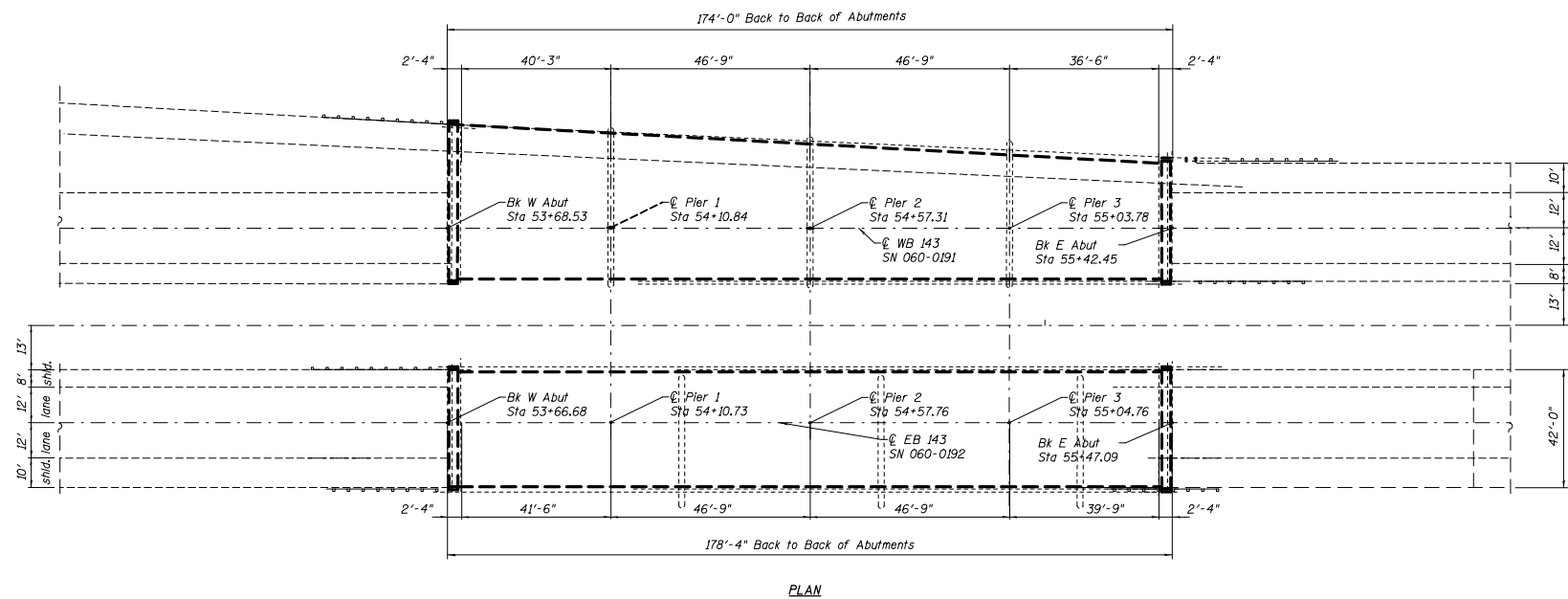
\* FAP 789/CH 1A

F.A.P. RTE.	SECTION	COUNTY	TOTAL SHEETS	SHEET NO.
*	125-1HB-P, 1-HB-P	MADISON	13	5
CONTRACT NO. 76H36				
FED. ROAD DIST. NO.		ILLINOIS FED. AID PROJECT		

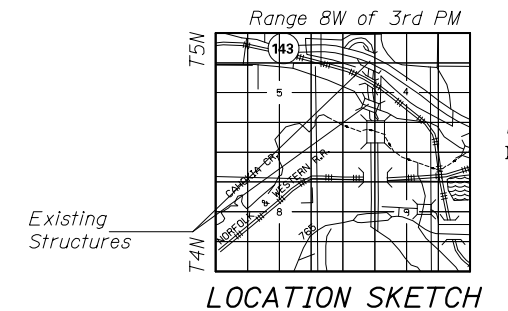
SN 060-0191(WB) & 060-0192(EB)



ELEVATION  
(Looking North)



PLAN



LOCATION SKETCH

FILE NAME =	USER NAME = #USER*	DESIGNED -	REVISD -
#FILE#		DRAWN -	REVISD -
	PLOT SCALE = #SCALE*	CHECKED -	REVISD -
	PLOT DATE = #DATE*	DATE -	REVISD -

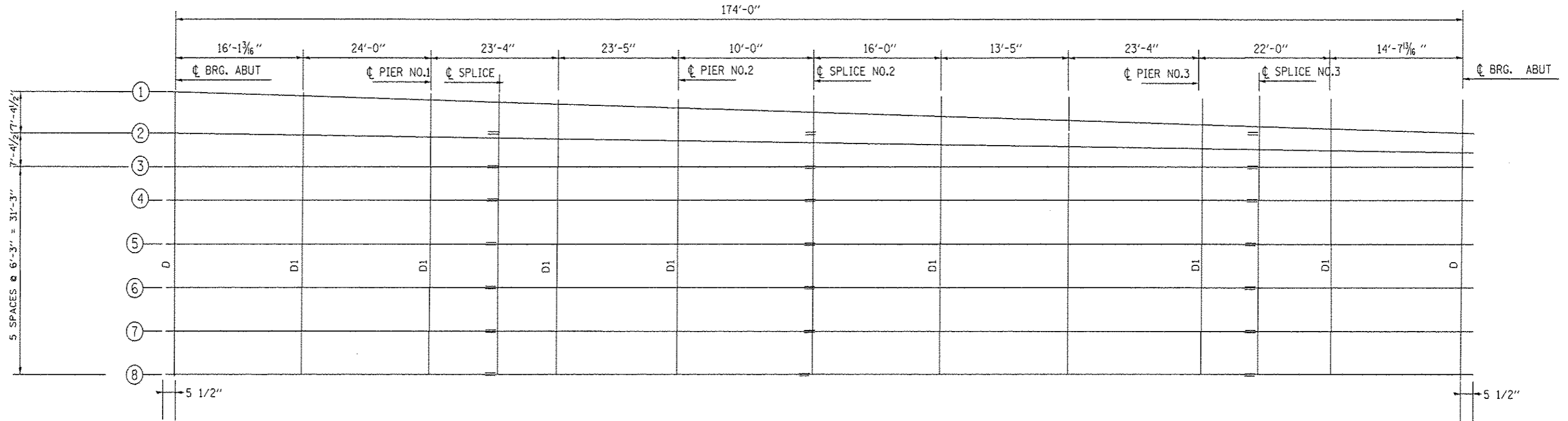
STATE OF ILLINOIS  
DEPARTMENT OF TRANSPORTATION

PLAN & ELEVATION

SCALE: N1S SHEET NO. 2 OF 2 SHEETS STA. TO STA.

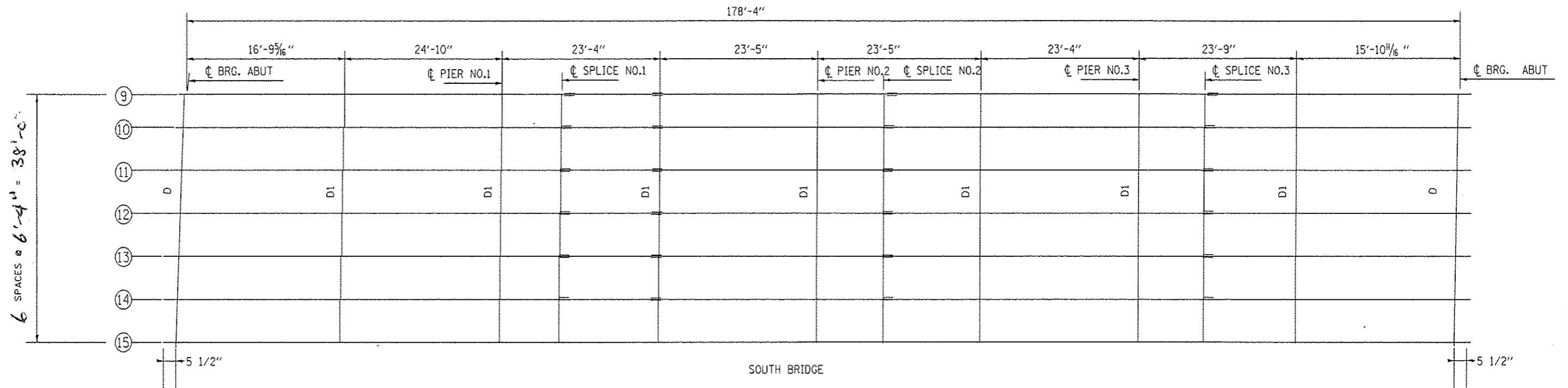
* FAP 789/CH 1A	
F.A.P. RTE.	SECTION COUNTY TOTAL SHEETS SHEET NO.
•	125-1HB-P, 1-HB-P MADISON 13 6
CONTRACT NO. 76H36	
FED. ROAD DIST. NO. ILLINOIS FED. AID PROJECT	

SN 060-0191(WB) & 060-0192(EB)



NORTH BRIDGE

NOTE: ALL BEAMS ARE 27 WF 94  
 END DIAPHRAGMS ARE 12 WF 40  
 INTERIOR DIAPHRAGMS ARE 12 WF 36

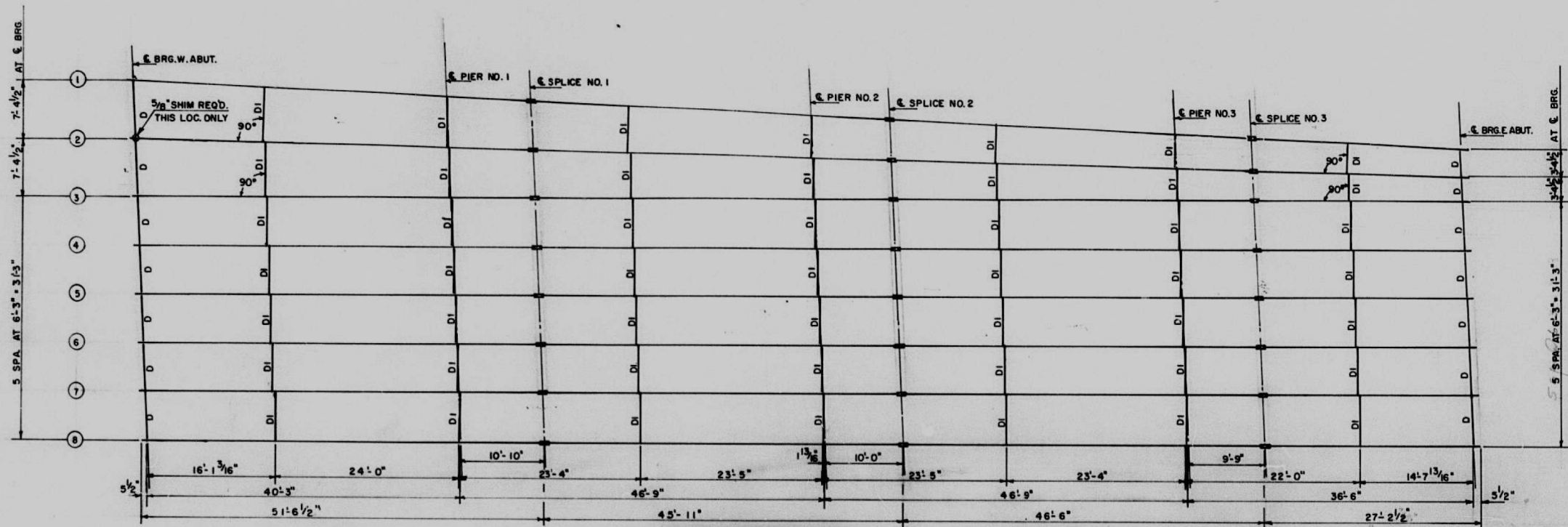


SOUTH BRIDGE

FILE NAME *	USER NAME * #USER*	DESIGNED -	REVISED -	<b>STATE OF ILLINOIS DEPARTMENT OF TRANSPORTATION</b>	<b>PLAN SHEET</b>			F.A.P. RTE.	SECTION	COUNTY	TOTAL SHEETS	SHEET NO.
#FILE#	PLOT SCALE * #SCALE*	DRAWN -	REVISED -					*	125-1HB-P, 1-HB-P	MADISON	13	7
	PLOT DATE * #DATE*	CHECKED -	REVISED -		SCALE: NIS			SHEET NO. 1 OF 1 SHEETS			STA. _____ TO STA. _____	
		DATE -	REVISED -					FED. ROAD DIST. NO. - ILLINOIS FED. AID PROJECT				
								* FAP 789CH 1A CONTRACT NO. 76H36				

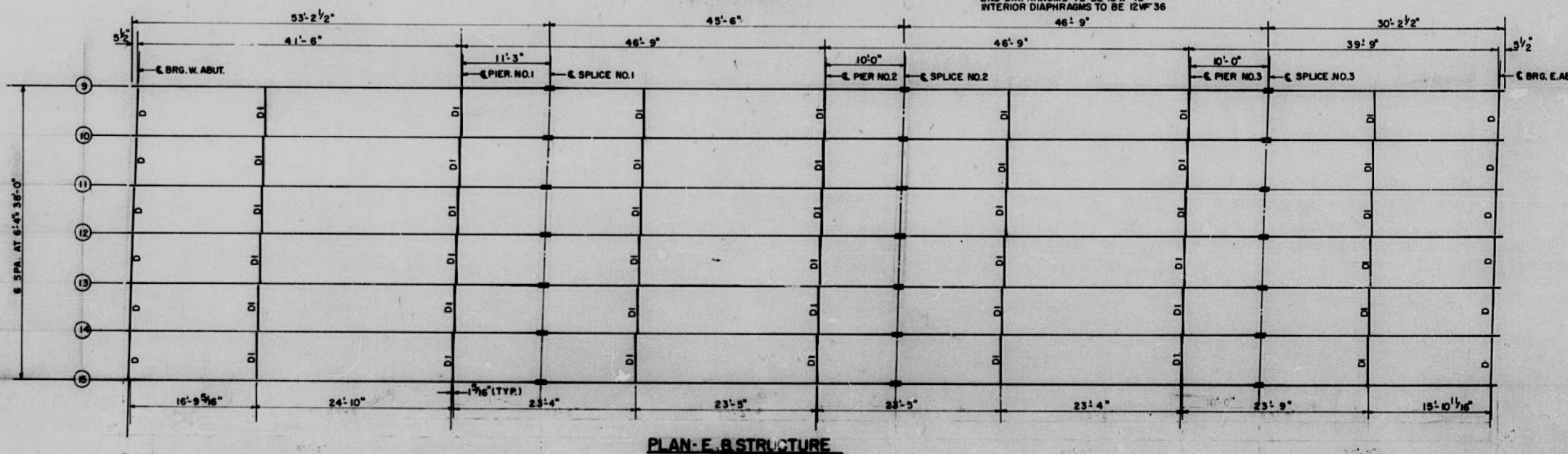
STATE OF ILLINOIS  
DEPARTMENT OF PUBLIC WORKS & BUILDINGS  
DIVISION OF HIGHWAYS

ROUTE NO.	SECTION	COUNTY	TOTAL SHEETS	SHEET NO.	SHEET NO. 9
F.A.	125-1-HB	MADISON	48	18	25 SHEETS
FED. ROAD DIST. NO. 7	ILLINOIS	FED. AID PROJECT			



NOTE: ALL BEAMS TO BE 27WF94  
END DIAPHRAGMS TO BE 12WF40  
INTERIOR DIAPHRAGMS TO BE 12WF36

NOTE: WORK THIS SHEET  
WITH SHEET NO. 10



DESIGNED	G.E.P.
CHECKED	D.A.S.
DRAWN	<i>[Signature]</i>
CHECKED	G.E.P.

EXAMINED	19
PASSED	ENGINEER OF BRIDGE AND TRAFFIC STRUCTURES
APPROVED	ENGINEER OF DESIGN
	CHIEF HIGHWAY ENGINEER

**STRUCTURAL DETAILS**  
F.A. ROUTE 50 OVER F.A.S. RTE. 770  
SEC. 125-1-HB  
MADISON COUNTY  
STA. 54+60.95

FILE NAME =	USER NAME = *USER*	DESIGNED -	REVIS -
*FILE#		DRAWN -	REVIS -
	PLOT SCALE = *SCALE*	CHECKED -	REVIS -
	PLOT DATE = *DATE*	DATE -	REVIS -

STATE OF ILLINOIS  
DEPARTMENT OF TRANSPORTATION

DETAIL SHEET

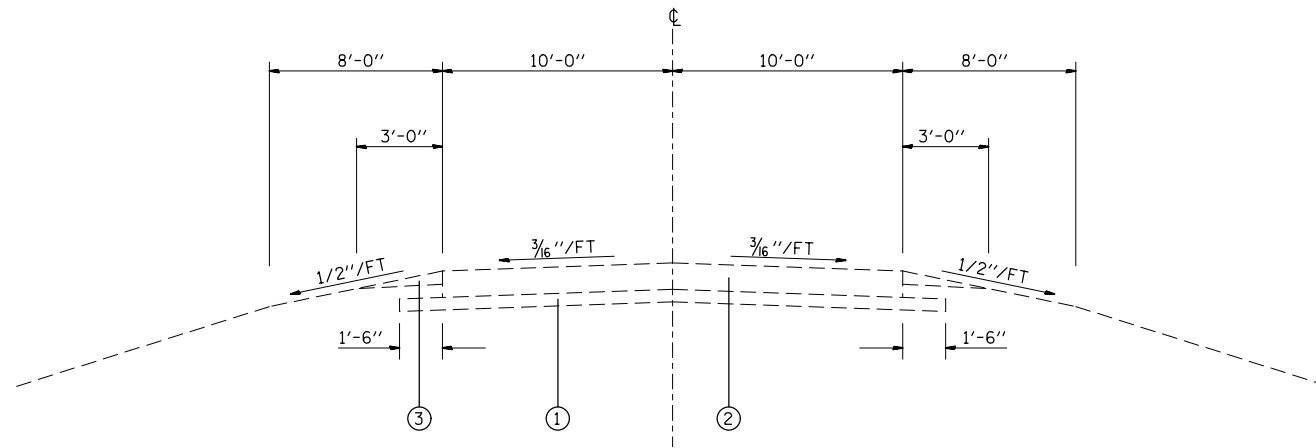
SCALE: NIS SHEET NO. 1 OF 1 SHEETS STA. TO STA.

F.A.P. RTE.	SECTION	COUNTY	TOTAL SHEETS	SHEET NO.
*	125-1HB-P, 1-HB-P	MADISON	13	8
CONTRACT NO. 76H36				
FED. ROAD DIST. NO. ILLINOIS FED. AID PROJECT				

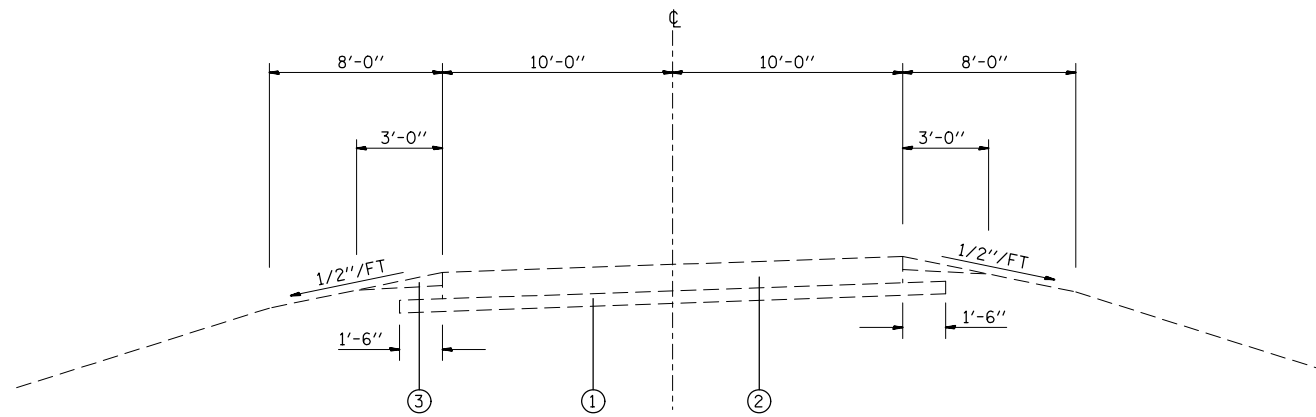
\* FAP 789CH 1A



SN 060-0160



TYPICAL CROSS SECTION C.H. 1A  
STA. 51+31.65 TO STA. 51+66.00



SUPERELEVATED SECTION C.H. 1A  
STA. 44+77.74 TO STA. 48+86.85

ROADWAY TYPICAL SECTION

- ① EXISTING STABILIZED SUBBASE - 4"
- ② EXISTING REINFORCED P.C.C. PAVEMENT - 8"
- ③ EXISTING GRAVEL OR CRUSHED STONED SHOULDERS, TYPE B

FILE NAME =	USER NAME = milleraj	DESIGNED -	REVISED -
et:\pw\work\p\dot\milleraj\0400172\d87	h36-sht-plan.dgn	DRAWN -	REVISED -
	PLOT SCALE = 100.0000' / in.	CHECKED -	REVISED -
	PLOT DATE = 10/3/2014	DATE -	REVISED -

STATE OF ILLINOIS  
DEPARTMENT OF TRANSPORTATION

TYPICAL SECTIONS

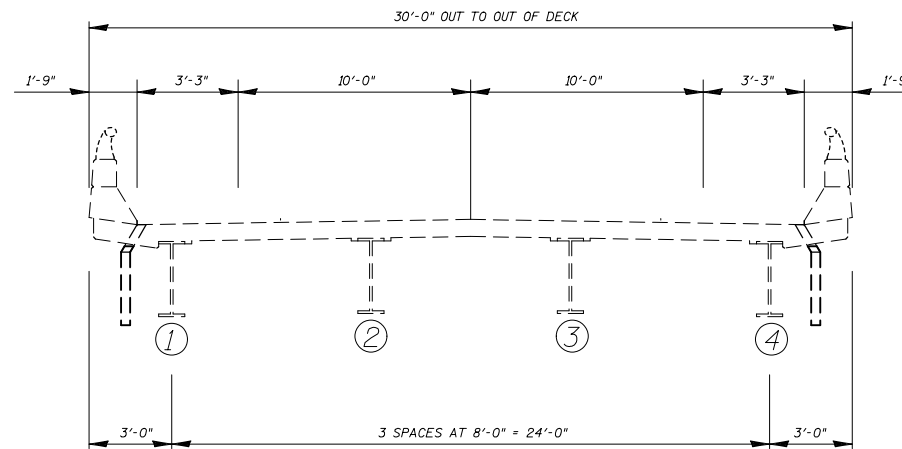
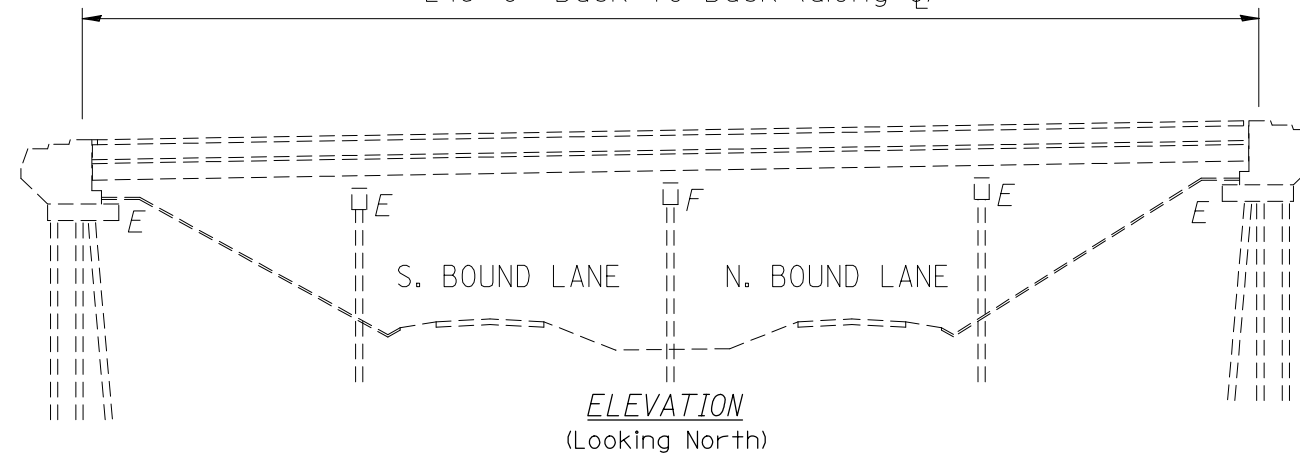
SCALE: NTS      SHEET NO. 7 OF 19 SHEETS      STA.      TO STA.

F.A.P. RTE.	SECTION	COUNTY	TOTAL SHEETS	SHEET NO.
*	125-1HB-P, 1-HB-P	MADISON	13	9
FED. ROAD DIST. NO.			ILLINOIS FED. AID PROJECT	
			CONTRACT NO. 76H36	

\* FAP 789CH 1A

SN 060-0160

246'-0" Back to Back (along  $\Phi$ )



CROSS SECTION  
Looking East

FILE NAME =	USER NAME = milleraj	DESIGNED -	REVISED -
et:\pw\work\p\dot\milleraj\d0400172\d87	6h36-sht-plan.dgn	DRAWN -	REVISED -
	PLOT SCALE = 100.0000' / in.	CHECKED -	REVISED -
	PLOT DATE = 10/3/2014	DATE -	REVISED -

STATE OF ILLINOIS  
DEPARTMENT OF TRANSPORTATION

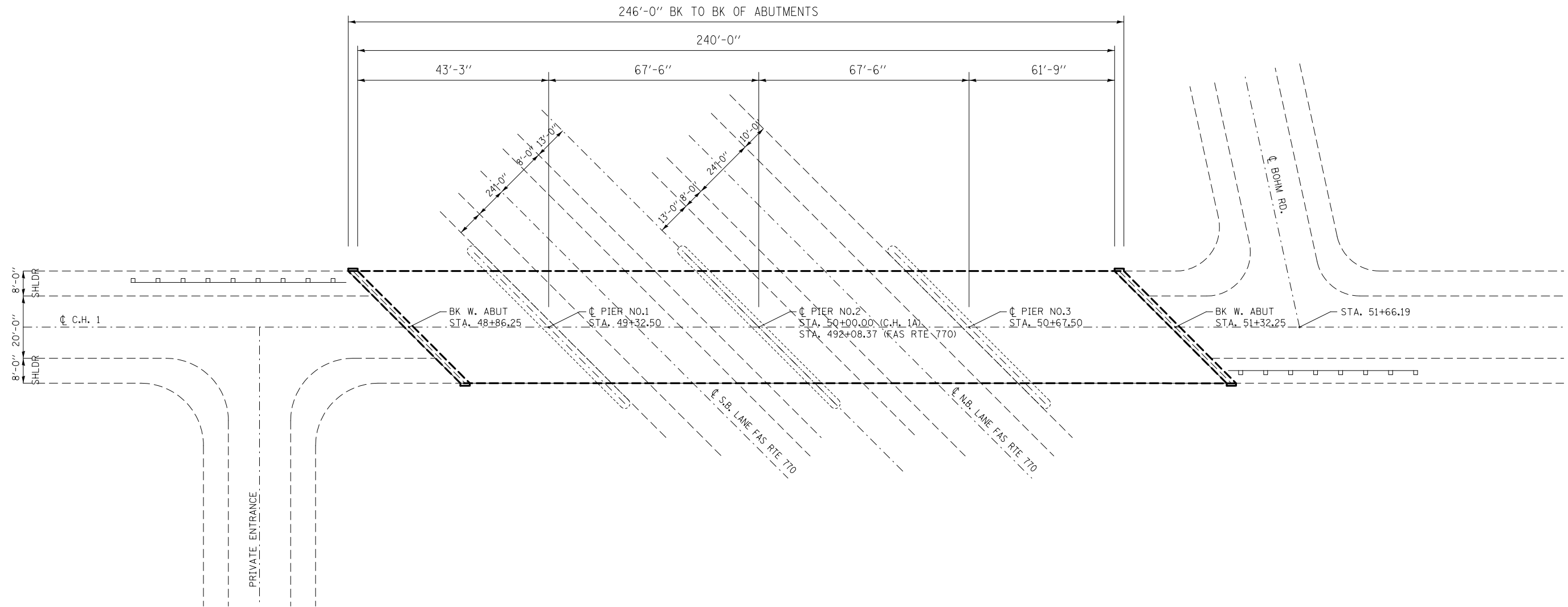
PLAN & ELEVATION

SCALE: NTS SHEET NO. 1 OF 1 SHEETS STA. TO STA.

\* FAP 789/CH 1A

F.A.P. RTE.	SECTION	COUNTY	TOTAL SHEETS	SHEET NO.
*	125-1HB-P, 1-HB-P	MADISON	13	10
FED. ROAD DIST. NO. ILLINOIS FED. AID PROJECT			CONTRACT NO. 76H36	

SN 060-0160



FILE NAME =	USER NAME = milleraj	DESIGNED -	REVISED -
et:\pw\work\p\dot\milleraj\0400172\d87	h36-sht-plan.dgn	DRAWN -	REVISED -
	PLOT SCALE = 100.0000' / in.	CHECKED -	REVISED -
	PLOT DATE = 10/3/2014	DATE -	REVISED -

**STATE OF ILLINOIS  
DEPARTMENT OF TRANSPORTATION**

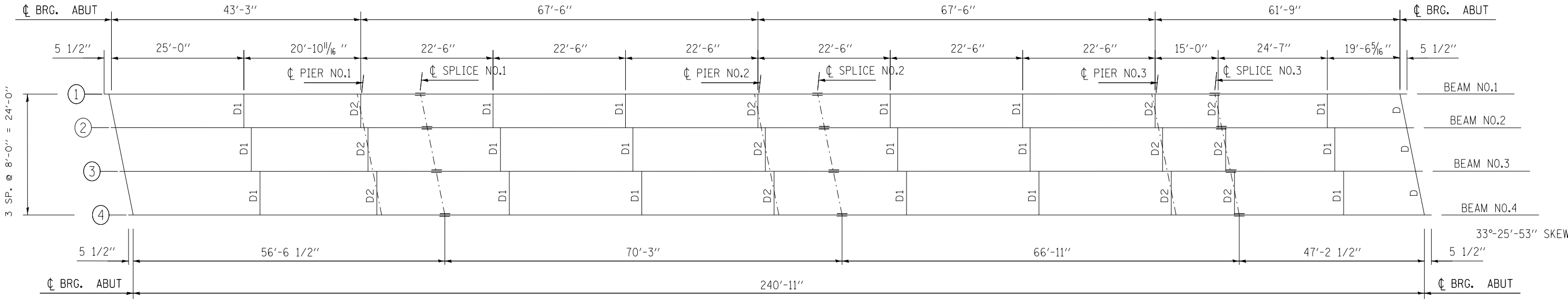
**PLAN SHEET**

SCALE: NTS      SHEET NO. 1 OF 2 SHEETS      STA.      TO STA.

F.A.P. RTE.	SECTION	COUNTY	TOTAL SHEETS	SHEET NO.
*	125-1HB-P, 1-HB-P	MADISON	13	11
CONTRACT NO. 76H36				
FED. ROAD DIST. NO.    ILLINOIS FED. AID PROJECT				

\* FAP 789/CH 1A

# SN 060-0160



NOTE: ALL BEAMS ARE 36 WF 170  
 END DIAPHRAGMS ARE 12 WF 40  
 INTERIOR DIAPHRAGMS ARE 16 WF 36

FILE NAME =	USER NAME = milleraj	DESIGNED -	REVISED -
et:\pw\work\p\dot\milleraj\d0400172\d87	h36-sht-plan.dgn	DRAWN -	REVISED -
	PLOT SCALE = 100.0000' / in.	CHECKED -	REVISED -
	PLOT DATE = 10/3/2014	DATE -	REVISED -

**STATE OF ILLINOIS  
 DEPARTMENT OF TRANSPORTATION**

**PLAN SHEET**

SCALE: NTS      SHEET NO. 2 OF 2 SHEETS      STA.      TO STA.

* FAP 789CH 1A		F.A.P. RTE.	SECTION	COUNTY	TOTAL SHEETS	SHEET NO.
		•	125-1HB-P, 1-HB-P	MADISON	13	12
					CONTRACT NO. 76H36	
FED. ROAD DIST. NO.		ILLINOIS FED. AID PROJECT				

ROUTE NO.	SECTION	COUNTY	TOTAL SHEETS	SHEET NO.
F.A.S. 770	1-HB	MADISON	70	15
FED. ROAD DIST. NO. 7	ILLINOIS	FED. AID PROJECT		

SHIM TABLE  
AT PIER NO. 2 AT PIER NO. 3

BM NO. 4	"r" = 1/2"	"r" = 1/4"
----------	------------	------------

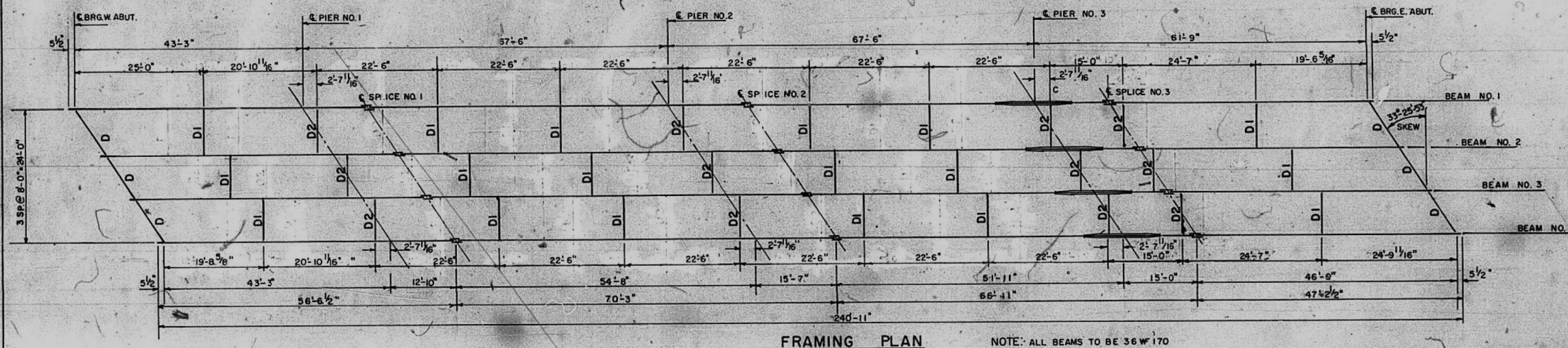
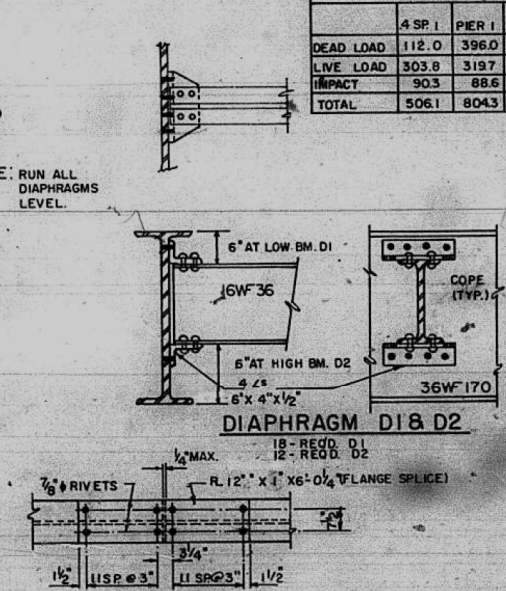
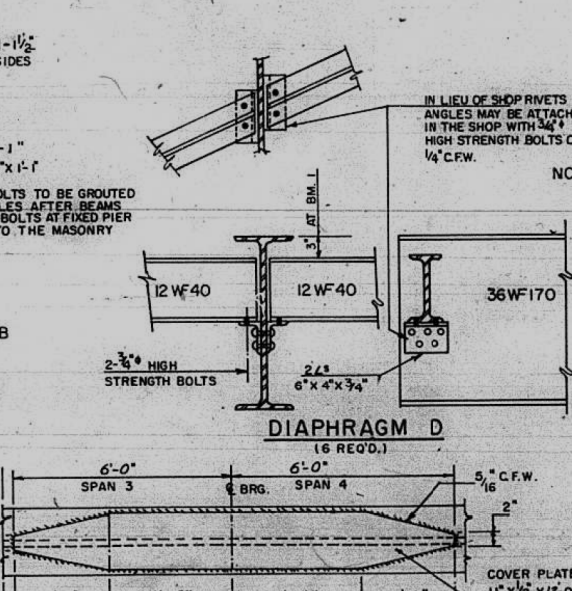
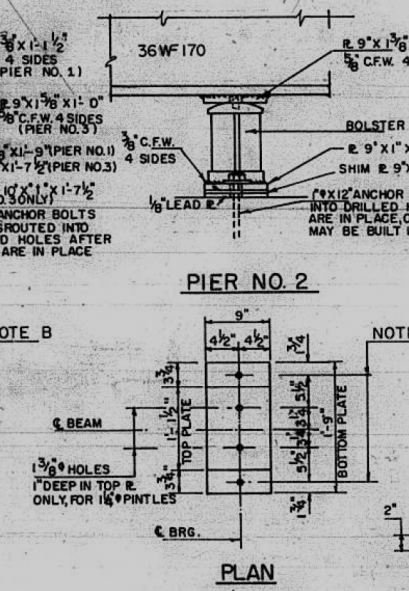
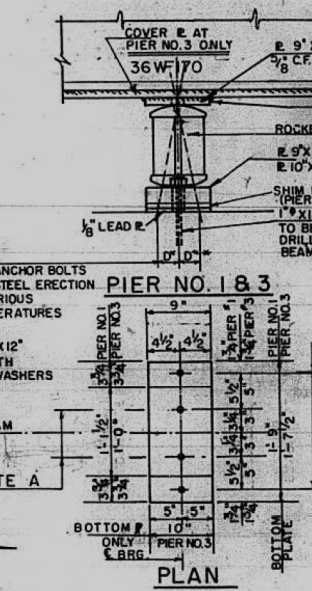
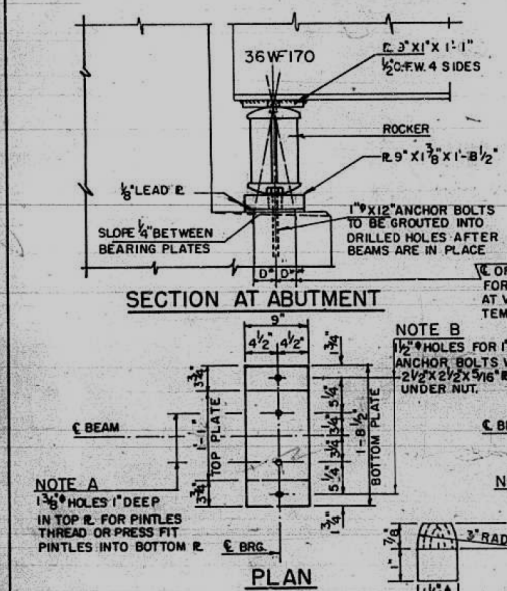


TABLE OF MOMENTS & REACTIONS - INTERIOR BEAMS

	MOMENTS (FT. KIPS)								REACTIONS (KIPS)					
	4 SP. 1	PIER 1	5 SP. 2	PIER 2	5 SP. 3	PIER 3	4 SP. 4	WABUT	PIER 1	PIER 2	PIER 3	E ABUT		
DEAD LOAD	112.0	396.0	258.5	459.6	180.1	552.7	330.2	16.9	74.9	80.9	88.2	28.3		
LIVE LOAD	303.8	3197	410.8	373.8	419.2	409.5	475.8	39.2	51.2	54.3	55.6	42.5		
IMPACT	90.3	88.6	106.7	97.1	108.9	107.9	127.4	11.6	13.3	14.1	14.7	14.4		
TOTAL	506.1	8043	776.0	930.5	708.2	1070.1	933.4	67.7	139.4	149.3	158.5	82.2		



ELEVATION TOP OF WF

	BRG. WABUT.	PIER 1	SPICE 1	PIER 2	SPICE 2	PIER 3	SPICE 3	BRG. E ABUT.
BM 1	478.04	479.66	480.14	481.99	482.52	484.11	484.58	485.98
BM 2	478.47	480.01	480.47	482.30	482.82	484.41	484.87	486.25
BM 3	478.86	480.28	480.70	482.49	482.95	484.57	485.02	486.39
BM 4	479.13	480.41	480.78	482.53	483.03	484.59	485.04	486.40

NOTES ON SETTING OF ANCHOR BOLTS AT EXP. BRGS.

(a) 0" SIDE OF BRG. AWAY FROM FIXED BRG.)  
D<sup>+</sup> 1/8" PER EACH 100' OF EXPANSION FOR EVERY 15° FALL BELOW THE NORMAL OF 50° F.  
D<sup>-</sup> 1/8" (SIDE OF BRG. TOWARD FIXED BRG.)  
D<sup>+</sup> 1/8" PER EACH 100' OF EXPANSION FOR EVERY 15° RISE ABOVE THE NORMAL OF 50° F.

(b) AFTER BEAMS HAVE BEEN ERRECTED AND DIMENSIONS D<sup>+</sup> OR D<sup>-</sup> DETERMINED, HOLES SHALL BE DRILLED AND ANCHOR BOLTS SHALL BE GROUDED IN PLACE. ALL FIXED ANCHOR BOLTS MAY BE BUILT INTO THE MASONRY.

**STRUCTURAL STEEL DETAILS**  
**C.H.1 OVER F.A.S. ROUTE 770**  
**SEC. 1-HB**  
**MADISON COUNTY**  
**STA. 492 + 08.37**

DESIGNED	J. G. G.
CHECKED	G. E. P.
DRAWN	J. P. E.
CHECKED	G. E. P.

