

STATE OF ILLINOIS
DEPARTMENT OF TRANSPORTATION
DIVISION OF HIGHWAYS

**PROPOSED
HIGHWAY PLANS**

FAP ROUTE 631 (IL 102)
SECTION (110 N) I-3
PROJECT: *ACHSIP-0631(016)*
SHOULDER WIDENING & RUMBLE STRIPS
KANKAKEE COUNTY

C-93-022-15

F.A.P. RTE.	SECTION	COUNTY	TOTAL SHEETS	SHEET NO.
631	(110 N) I-3	KANKAKEE	6	1
		ILLINOIS	CONTRACT NO. 66E35	

INDEX OF SHEETS

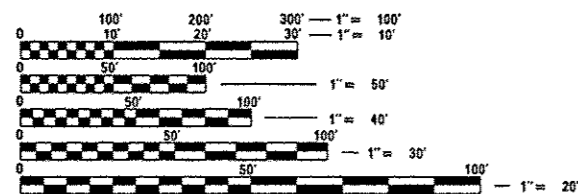
- 1 COVER SHEET
- 2 GENERAL NOTES
- 3 SUMMARY OF QUANTITIES
- 4 TYPICAL SECTIONS
- 5 SCHEDULES
- 6 DETAILS

STANDARDS

000001-06	STANDARD SYMBOLS, ABBREVIATIONS AND PATTERNS
001008	DECIMAL OF AN INCH AND OF A FOOT
406201-01	MAILBOX TURNOUT
482001-02	HMA SHOULDER ADJACENT TO FLEXIBLE PAVEMENT
482006-03	HMA SHOULDER ADJACENT TO RIGID PAVEMENT
642006	SHOULDER RUMBLE STRIPS, 8 INCH
701306-03	LANE CLOSURE, 2L, 2W, SLOW MOVING OPERATIONS DAY ONLY, FOR SPEEDS ≥ 45 MPH
701311-03	LANE CLOSURE, 2L, 2W, MOVING OPERATIONS - DAY ONLY
701326-04	LANE CLOSURE, 2L, 2W, PAVEMENT WIDENING, FOR SPEEDS ≥ 45 MPH
701901-04	TRAFFIC CONTROL DEVICES



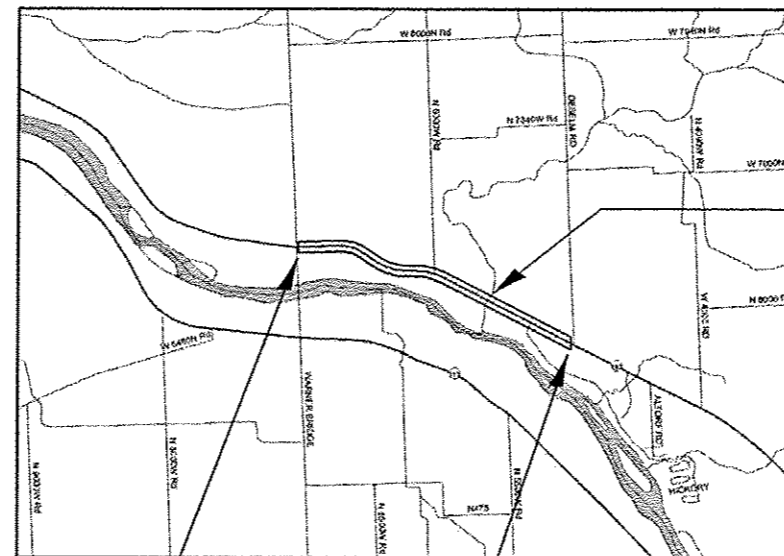
RURAL MINOR ARTERIAL
2013 ADT = 4400
P.V. = 88.7% S.U. = 6.8% M.U. = 4.5%



FULL SIZE PLANS HAVE BEEN PREPARED USING STANDARD ENGINEERING SCALES. REDUCED SIZED PLANS WILL NOT CONFORM TO STANDARD SCALES. IN MAKING MEASUREMENTS ON REDUCED PLANS, THE ABOVE SCALES MAY BE USED.

J.U.L.I.E.
JOINT UTILITY LOCATION INFORMATION FOR EXCAVATION
1-800-892-0123
OR 811

PROJECT ENGINEER: JOE KANNEL, P.E.
UNIT CHIEF: SCOTT FERGUSON, P.E.
DISTRICT 3 NO. (815) 434-6131
CONTRACT NO. 66E35



BRIDGE OMISSION
STA 444+00 TO 448+00
S.N. 046-0065

PROJECT ENDS
WARNER BRIDGE RD.
STA 525+15

PROJECT BEGINS
DESELM RD.
STA 408+76

PROJECT GROSS LENGTH = 11,639 FT. = 2.20 MILES
PROJECT NET LENGTH = 11,239 FT. = 2.13 MILES

STATE OF ILLINOIS
DEPARTMENT OF TRANSPORTATION
DIVISION OF HIGHWAYS
SUBMITTED *December 19, 2014*
Paul Loete, P.E.
DEPUTY DIRECTOR OF HIGHWAYS, REGION ENGINEER
Jan 30, 2015
John D. Baranzolli, P.E.
ENGINEER OF DESIGN AND ENVIRONMENT
Jan 30, 2015
Omer Osman, P.E.
DIRECTOR OF HIGHWAYS, CHIEF ENGINEER

PRINTED BY THE AUTHORITY
OF THE STATE OF ILLINOIS

GENERAL NOTES

THE THICKNESS OF HMA SHOWN ON THE PLANS IS THE NOMINAL THICKNESS. DEVIATIONS FROM THE NOMINAL THICKNESS WILL BE PERMITTED WHEN SUCH DEVIATIONS OCCUR DUE TO IRREGULARITIES IN THE EXISTING SURFACE OR BASE ON WHICH THE HMA IS PLACED.

THE HMA SURFACE OF ALL MAILBOX TURNOUTS, PRIVATE ENTRANCES, COMMERCIAL ENTRANCES, AND SIDE ROADS SHALL BE MADE NEATLY, IN A WORKMANLIKE MANNER, AND SHALL ACCURATELY CONFORM TO THE SHAPES AND DIMENSIONS SHOWN ON THE PLAN DETAILS. IF REQUIRED BY THE ENGINEER, THE CONTRACTOR SHALL SAW CUT THE HMA SURFACE TO CONFORM TO THE SHAPES AND DIMENSIONS SHOWN ON THE PLAN DETAILS. THIS WORK WILL BE INCLUDED IN THE COST OF THE HMA SURFACE.

THE ENGINEER WILL BE THE SOLE JUDGE CONCERNING CURING TIME FOR THE VARIOUS HMA LIFTS.

FOR STABILIZATION, ALL TYPE III BARRICADES WILL REQUIRE A MINIMUM OF FOUR SAND BAGS PER BARRICADE.

ALL EXCAVATED MATERIAL, WHICH INCLUDES DIGGING OR GRADING OF ANY SOIL OR FILL MATERIAL, WITH THE EXCEPTION OF AGGREGATE FILLS, MUST BE INCORPORATED WITHIN THE IDOT RIGHT OF WAY DUE TO ENVIRONMENTAL DOCUMENTATION REQUIREMENTS.

ON EXISTING PAVEMENT WHICH MAY BE SUPERELEVATED, THE NEW HMA PAVEMENT SHALL BE BUILT WITH THE SAME SUPERELEVATION UNLESS NEW SUPERELEVATION RATES ARE GIVEN ON THE PLANS.

ANY REFERENCE TO A STANDARD IN THESE PLANS SHALL BE INTERPRETED TO MEAN THE EDITION AS INDICATED BY THE SUBNUMBER SHOWN IN THE LIST OF STANDARDS OR THE COPY INCLUDED IN THESE PLANS.

THE FOLLOWING RATES OF APPLICATION HAVE BEEN USED IN CALCULATING PLAN QUANTITIES:

HMA RESURFACING	112	LBS / SQ YD / IN
-----------------	-----	------------------

MEMBERS OF JULIE KNOWN TO BE WITHIN THE LIMITS OF THE IMPROVEMENT ARE:

NON-MEMBERS OF JULIE KNOWN TO BE WITHIN THE LIMITS OF THE IMPROVEMENT ARE:

THE CONTRACTOR SHALL CONTACT JULIE AT LEAST 48 HOURS PRIOR TO EXCAVATION TO DETERMINE WHICH UTILITIES ARE IN THE AREA.

COMMITMENTS:

STATE OF ILLINOIS
DEPARTMENT OF TRANSPORTATION
DISTRICT THREE

PREPARED BY: *T. Benoit*
DISTRICT STUDIES & PLANS ENGINEER

DATE: December 19, 2014

EXAMINED BY: *Herb Jones*
DISTRICT CONSTRUCTION ENGINEER

[Signature]
DISTRICT MATERIALS ENGINEER

Patricia A. Huslan
DISTRICT OPERATIONS ENGINEER

FILE NAME *	USER NAME = budzynskim	DESIGNED -	REVISED -	STATE OF ILLINOIS DEPARTMENT OF TRANSPORTATION	GENERAL NOTES	F.A.P. RYE.	SECTION	COUNTY	TOTAL SHEETS	SHEET NO.
	c:\pwork\pwork\dot\budzynskim\d0410280\066E35-214-dot\1\dgn	DRAWN -	REVISED -			631	(110 N) 1-3	KANKAKEE	6	2
	PLOT SCALE = 100.0000' / in.	CHECKED -	REVISED -		SCALE: SHEET OF SHEETS STA. TO STA.	ILLINOIS FED. AID PROJECT				
	PLOT DATE = 12/17/2014	DATE -	REVISED -			CONTRACT NO. 66E35				

CONSTR. CODE
90% FED. 10% STATE
ROADWAY
0021
RURAL

CODE NO.	ITEM	UNIT	TOTAL QUANTITY	
20200600	EXCAVATING AND GRADING EXISTING SHOULDER	UNIT	225	225
40600275	BITUMINOUS MATERIALS (PRIME COAT)	POUND	4568	4568
40800050	INCIDENTAL HOT-MIX ASPHALT SURFACING	TON	18.3	18.3
44000157	HOT-MIX ASPHALT SURFACE REMOVAL, 2"	SO YD	163.6	163.6
48203029	HOT-MIX ASPHALT SHOULDERS, 8"	SO YD	9990	9990
64200108	SHOULDER RUMBLE STRIPS, 8 INCH	FOOT	22478	22478
67100100	MOBILIZATION	L SUM	1.0	1.0
70100460	TRAFFIC CONTROL AND PROTECTION, STANDARD 701306	L SUM	1.0	1.0
70100500	TRAFFIC CONTROL AND PROTECTION, STANDARD 701326	L SUM	1.0	1.0
70103815	TRAFFIC CONTROL SURVEILLANCE	CAL DA	25	25
* 78001110	PAINT PAVEMENT MARKING - LINE 4"	FOOT	44956	44956
Z0030850	TEMPORARY INFORMATION SIGNING	SO FT	42	42
X0800001	SHOULDER REMOVAL (SPECIAL)	SO YD	9990	9990

13

*Specialty Items

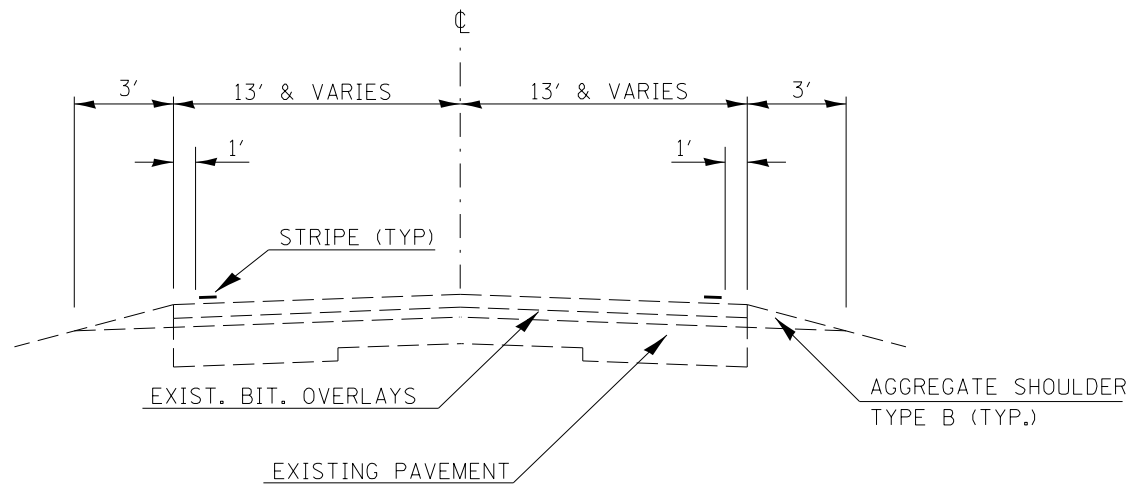
FILE NAME *	USER NAME * budzynskm	DESIGNED -	REVISED -
g:\hsv\work\pvidot\budzynskm\ad410280\D	66E35-shr-detail.dgn	DRAWN -	REVISED -
	PLOT SCALE = 1/8" = 1'	CHECKED -	REVISED -
	PLOT DATE = 12/19/2014	DATE -	REVISED -

STATE OF ILLINOIS
DEPARTMENT OF TRANSPORTATION

SUMMARY OF QUANTITIES

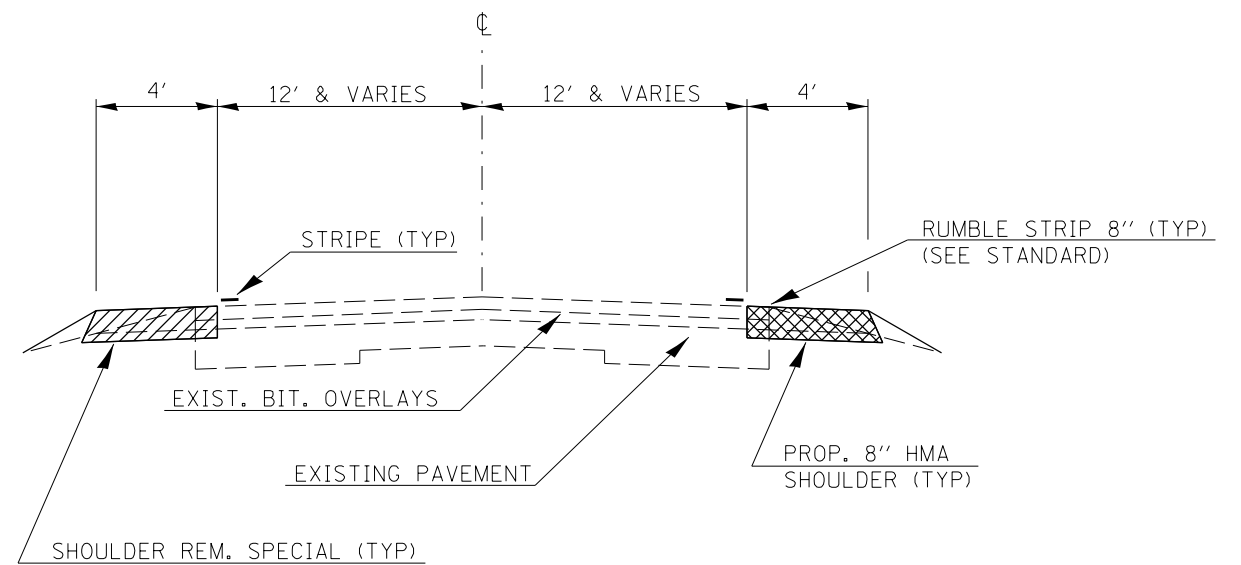
SCALE:	SHEET	OF	SHEETS	STA.	TO STA.
--------	-------	----	--------	------	---------

F.A.P. RTE.	SECTION	COUNTY	TOTAL SHEETS	SHEET NO.
631	(110 N) 1-3	KANKAKEE	6	3
CONTRACT NO. 66E35				
ILLINOIS FED. AID PROJECT				



EXISTING TYPICAL SECTION

STA 408+76 TO STA 444+00
 STA 448+00 TO STA 525+15



PROPOSED TYPICAL SECTION

STA 408+76 TO STA 444+00
 STA 448+00 TO STA 525+15

HMA MIXTURE REQUIREMENT TABLE		
LOCATION(S):	STA 408+76 TO STA 525+15	
MIXTURE USE(S):	SHOULDER BOTTOM LIFT(S)	SHOULDER TOP LIFT (2'')
BINDER GRADE (PG):	PG 64-22	PG 64-22
DESIGN AIR VOIDS:	4.0% @ N50	4.0% @ N50
MIXTURE COMPOSITION: (MIXTURE GRADATION)	IL-19.0 FG	IL-9.5 FG
FRICTION AGGREGATE:	-	MIXTURE C
MIXTURE WEIGHT:	112.0 LB/SY/IN	112.0 LB/SY/IN
QUALITY MANAGEMENT PROGRAM:	QC/QA	QC/QA
SUBLOT SIZE:	N/A	N/A
DENSITY TEST METHOD:	CORES	% GROWTH CURVE

FILE NAME =	USER NAME = budzynskim	DESIGNED -	REVISED -
et:\pw\work\p\dot\budzynskim\d0410280\0366E35-sht-details.dgn		DRAWN -	REVISED -
PLOT SCALE = 100.0000' / 1"		CHECKED -	REVISED -
PLOT DATE = 12/17/2014		DATE -	REVISED -

STATE OF ILLINOIS
 DEPARTMENT OF TRANSPORTATION

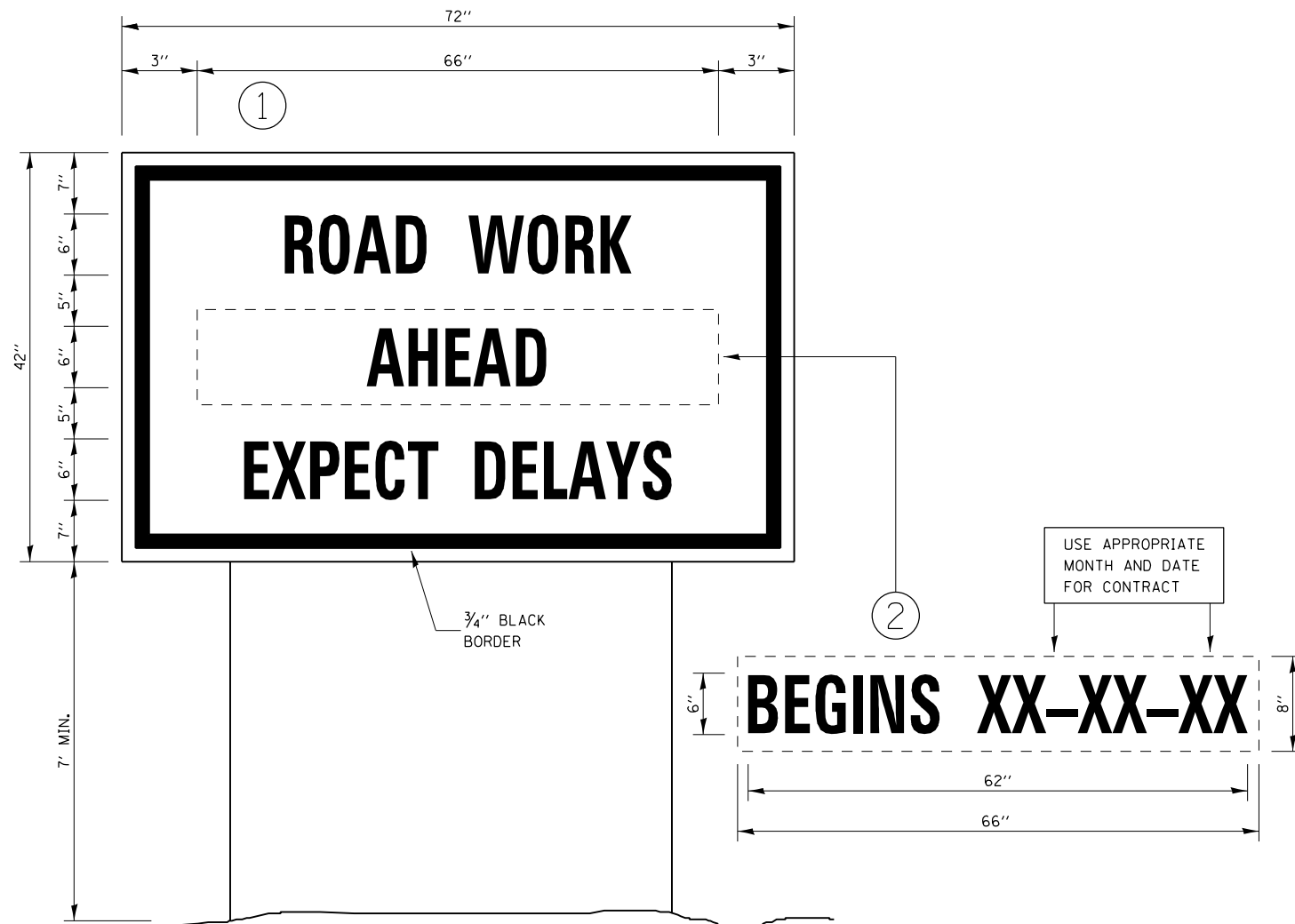
TYPICAL SECTIONS

SCALE: SHEET OF SHEETS STA. TO STA.

F.A.P. RTE.	SECTION	COUNTY	TOTAL SHEETS	SHEET NO.
631	(110 N) I-3	KANKAKEE	6	4
CONTRACT NO. 66E35				
ILLINOIS FED. AID PROJECT				

SHOULDER REMOVAL & REPLACEMENT SCHEDULE						
LOCATION	LENGTH	SHOULDER REMOVAL (SPECIAL)	HMA SHOULDERS 8"	BIT MTLs PRIME COAT	SHOULDER RUMBLE STRIPS 8"	PAINT PVMT MARKING 4"
	FOOT	SQ YD	SQ YD	POUND	FOOT	FOOT
DESELM RD (5000 W) TO S.N. 046-0065 STA 408+76 TO STA 444+00	3524	3132	3132	1410	7048	14096
BRIDGE OMISSION FROM STA 444+00 TO 448+00						
S.N. 046-0065 TO WARNER BRIDGE RD (7000 W) STA 448+00 TO STA 525+15	7715	6858	6858	3086	15430	30860
TOTAL	11239	9990	9990	4496	22478	44956

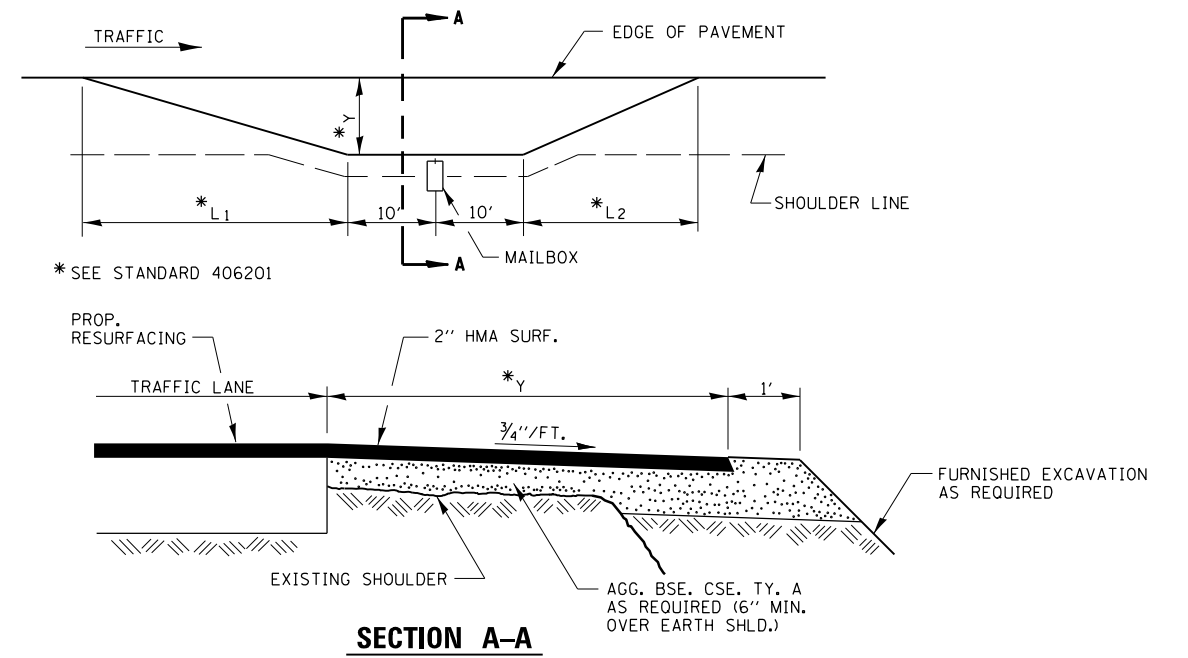
MAILBOX TURNOUT REMOVAL & REPLACEMENT SCHEDULE				
LOCATION	AREA	HMA SURF REMOVAL 2"	INCIDENTAL HMA SURF 2"	BIT MTLs PRIME COAT
	SQ YD	SQ YD	TON	POUND
STA 481+44 LT	40.9	40.9	4.6	18
STA 487+20 LT	40.9	40.9	4.6	18
STA 497+53 LT	40.9	40.9	4.6	18
STA 507+92 LT	40.9	40.9	4.6	18
TOTAL	163.6	163.6	18.3	72



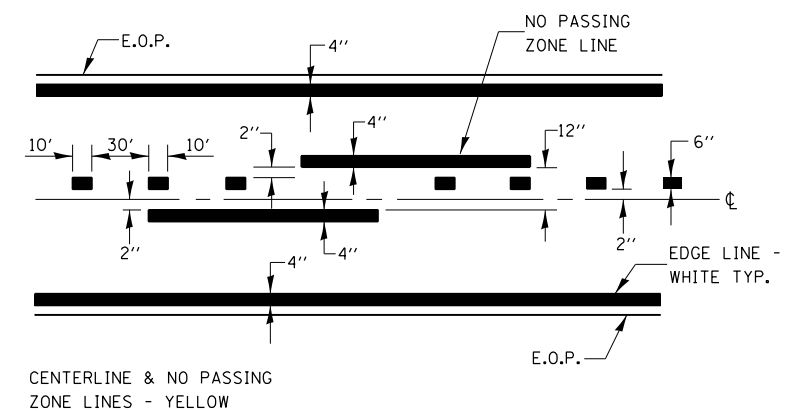
TEMPORARY INFORMATION SIGNING

NOTES:

1. USE 6" D BLACK LETTERING ON FLOURESENT ORANGE BACKGROUND.
2. ERECT SIGNS AT LOCATIONS IN ADVANCE OF THE "ROAD CONSTRUCTION AHEAD" SIGNS AS DIRECTED BY THE ENGINEER.
3. ERECT SIGN ① WITH INSTALLED PANEL ② A MINIMUM OF ONE WEEK PRIOR TO THE START OF THE LANE CLOSURE.
4. REMOVE PANEL ② ON THAT DATE.
5. SEE SPECIAL PROVISION "TEMPORARY INFORMATION SIGNING" FOR ADDITIONAL INFORMATION.
6. WILL BE PAID FOR PER SO FT AS "TEMPORARY INFORMATION SIGNING". EACH SIGN = 21 SO FT AND THE DATE PANEL ② WILL NOT BE MEASURED SEPARATELY FOR PAYMENT.



RURAL MAILBOX TURNOUT DETAILS



PAVEMENT MARKING

FILE NAME =	USER NAME = budzynskim	DESIGNED -	REVISED -	STATE OF ILLINOIS DEPARTMENT OF TRANSPORTATION	DETAILS	F.A.P. RTE.	SECTION	COUNTY	TOTAL SHEETS	SHEET NO.
ca:\pw\work\p\idot\budzynskim\d0410280\0366E35-sht-details.dgn	DRAWN -	REVISED -	631			(110 N) I-3	KANKAKEE	6	6	
PLOT SCALE = 100.0000' / 1"	CHECKED -	REVISED -	CONTRACT NO. 66E35							
PLOT DATE = 12/17/2014	DATE -	REVISED -	ILLINOIS FED. AID PROJECT							
				SCALE:	SHEET OF SHEETS	STA.	TO STA.			