

STATE OF ILLINOIS
DEPARTMENT OF TRANSPORTATION
DIVISION OF HIGHWAYS

| F.A.P. RTE. | SECTION | COUNTY | TOTAL SHEETS | SHEET NO. |
|-------------|-----------|--------|--------------------|-----------|
| 557 | 128-B-1-1 | KANE | 20 | 1 |
| ILLINOIS | | | CONTRACT NO. 60M91 | |

FOR INDEX OF SHEETS, SEE SHEET NO.

IMPROVEMENT LOCATED IN UNINCORPORATED
KANE COUNTY

**PROPOSED
HIGHWAY PLANS**

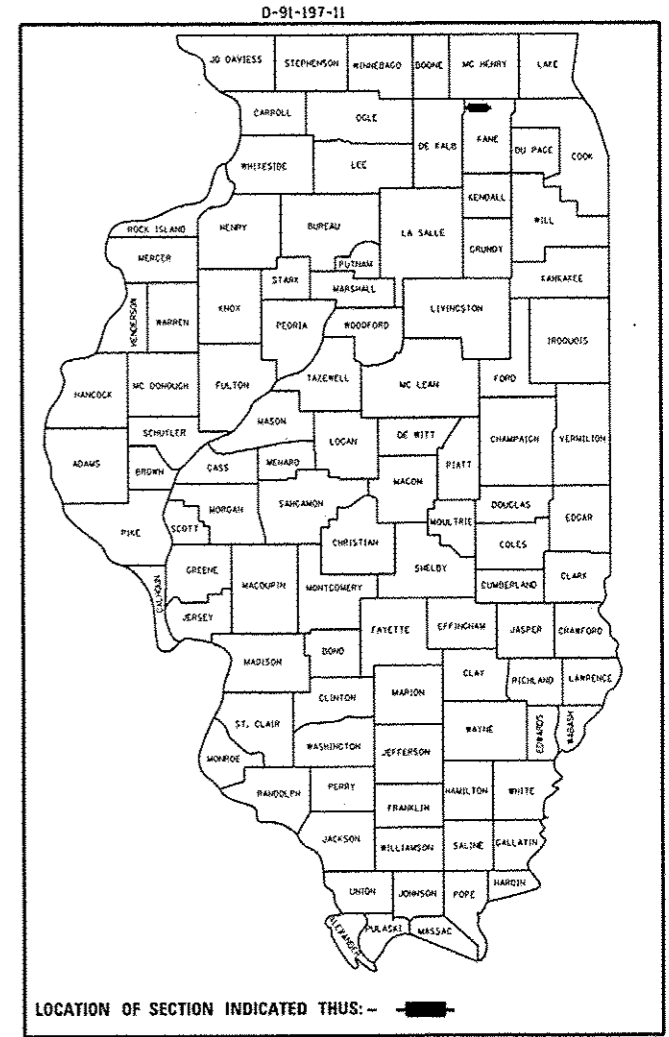
FAP ROUTE 557 – ILLINOIS ROUTE 72
AT COON CREEK 5.3 MI W. OF IL RTE. 47
SECTION 128-B-1-1
KANE COUNTY
BRIDGE DECK OVERLAY
C-91-197-11

TRAFFIC DATA

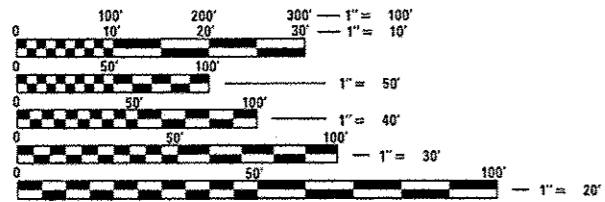
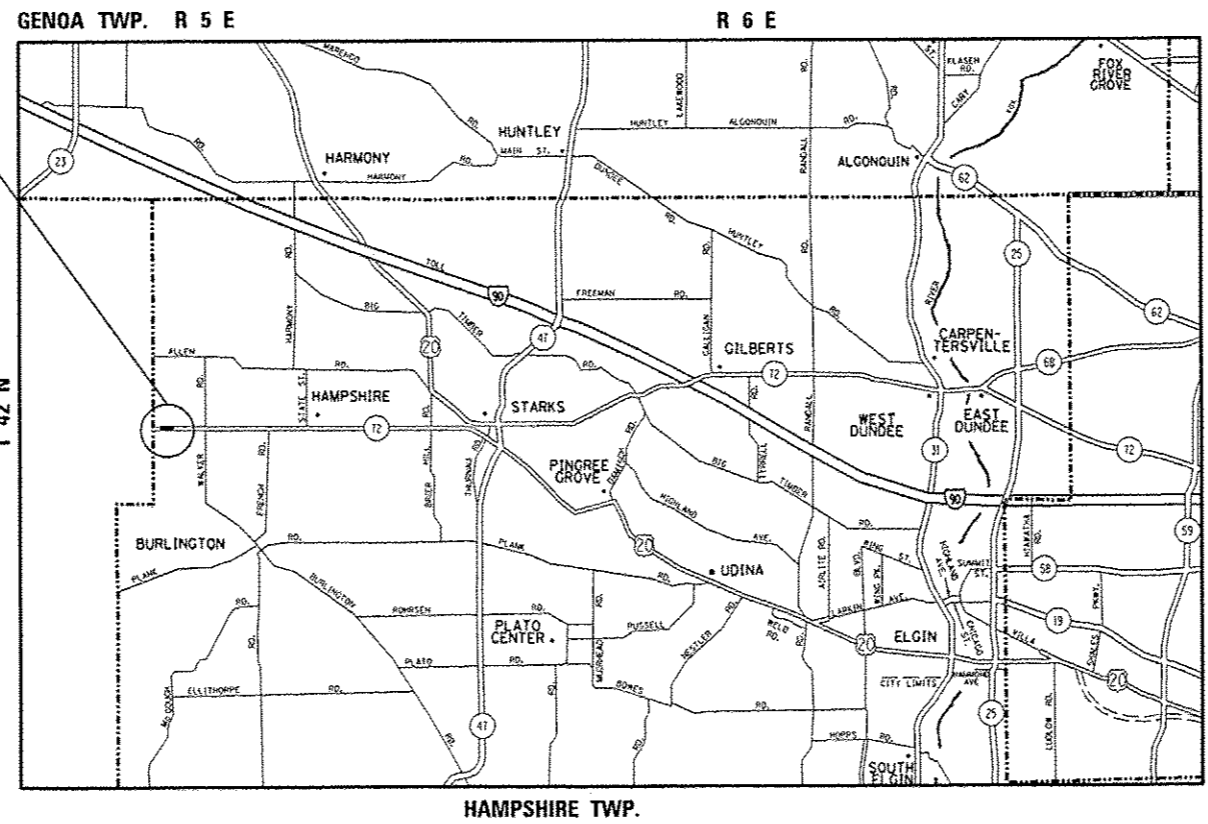
ILLINOIS ROUTE 72

EXISTING ADT (2009) : 6,900

POSTED SPEED LIMIT : 55 MPH



IMPROVEMENT LOCATION
(SN 045-0053)



FULL SIZE PLANS HAVE BEEN PREPARED USING STANDARD ENGINEERING SCALES. REDUCED SIZED PLANS WILL NOT CONFORM TO STANDARD SCALES. IN MAKING MEASUREMENTS ON REDUCED PLANS, THE ABOVE SCALES MAY BE USED.

J.U.L.I.E.
JOINT UTILITY LOCATION INFORMATION FOR EXCAVATION
1-800-892-0123
OR 811

PROJECT ENGINEER J. ALAIN MIDY (847) 221-3056
PROJECT MANAGER ISSAM RAYYAN (847) 705-4178

GROSS AND NET LENGTH = 96.6 FT. = 0.018 MILE

CONTRACT NO. 60M91

STATE OF ILLINOIS
DEPARTMENT OF TRANSPORTATION
DIVISION OF HIGHWAYS

SUBMITTED 10/7 2014

John F. ...
DEPUTY DIRECTOR OF HIGHWAYS, REGION ENGINEER

Jan 30 2015
John D. Baronzelli PE, EIT
ENGINEER OF DESIGN AND ENVIRONMENT

Jan 30 2015
Omer ...
DIRECTOR OF HIGHWAYS, CHIEF ENGINEER

PRINTED BY THE AUTHORITY
OF THE STATE OF ILLINOIS

INDEX OF SHEETS

SHEET NO. DESCRIPTION

- 1 TITLE SHEET
- 2 GENERAL NOTES AND HIGHWAY STANDARDS
- 3-4 SUMMARY OF QUANTITIES
- 5-7 SUGGESTED STAGES OF CONSTRUCTION AND TRAFFIC CONTROL
- 8 PROP. ROADWAY AND PAVEMENT MARKING PLAN
- 9-11 STRUCTURAL SHEETS
- 12 ROADWAY DETAILS
- 13 SIGN DETAIL
- 14-16 TEMPORARY LIGHTING AND TRAFFIC SIGNALS FOR SINGLE LANE STAGING (BE-805)
- 17 TRAFFIC CONTROL AND PROTECTION FOR SIDE ROADS, INTERSECTIONS, AND DRIVEWAYS (TC-10)
- 18 TYPICAL APPLICATIONS RAISED REFLECTIVE PAVEMENT MARKERS (SNOW-PLow RESISTANT) (TC-11)
- 19 DISTRICT ONE TYPICAL PAVEMENT MARKINGS (TC-13)
- 20 ARTERIAL INFORMATION SIGN (TC-22)

HIGHWAY STANDARDS

- 635006-03 REFLECTOR AND TERMINAL MARKER PLACEMENT
- 635011-02 REFLECTOR MARKER AND MOUNTING DETAILS
- 701006-05 OFF-ROD OPERATIONS, 2L, 2W, 15' TO 24" FROM PAVEMENT EDGE
- 701301-04 LANE CLOSURE, 2L, 2W, SHORT TIME OPERATIONS
- 701311-03 LANE CLOSURE 2L, 2W MOVING OPERATIONS DAY ONLY
- 701306-03 LANE CLOSURE, 2L, 2W, SLOW MOVING OPERATIONS - DAY ONLY, FOR SPEEDS GREATER THAN OR EQUAL TO 45 MPH
- 701901-04 TRAFFIC CONTROL DEVICES
- 704001-07 TEMPORARY CONCRETE BARRIER

GENERAL NOTES

BEFORE STARTING ANY EXCAVATION, THE CONTRACTOR SHALL CALL "JULIE" AT (800) 892-0123 FOR FIELD LOCATIONS OF BURIED ELECTRIC, TELEPHONE AND GAS FACILITIES. (48 HOURS NOTIFICATION IS REQUIRED).

THE CONTRACTOR SHALL COORDINATE CONSTRUCTION ACTIVITIES WITH THE RESPECTIVE UTILITIES AND HAMPHIRE TOWNSHIP.

THE CONTRACTOR WILL NOT BE ALLOWED TO SET UP A YARD OR FIELD OFFICE ON STATE PROPERTY WITHOUT WRITTEN PERMISSION FROM THE DEPARTMENT.

ALL DAMAGE TO EXISTING PAVEMENT MARKINGS OR RAISED REFLECTIVE PAVEMENT MARKINGS OUTSIDE THE REMOVAL LIMITS SHOWN ON THE PLANS SHALL BE REPLACED AT NO ADDITIONAL COST TO THE DEPARTMENT.

BEFORE BEGINNING ANY WORK, THE CONTRACTOR SHALL RETAIN AND RECORD FOR FUTURE REFERENCE, ALL EXISTING PAVEMENT MARKING LINES AND RAISED REFLECTIVE PAVEMENT MARKERS IN ORDER THAT THESE LOCATIONS CAN BE RE-ESTABLISHED FOR STRIPING. EXACT LOCATIONS OF ALL PAVEMENT MARKINGS SHALL BE AS DIRECTED BY THE ENGINEER.

IT SHALL BE THE CONTRACTOR'S RESPONSIBILITY TO VERIFY ALL DIMENSIONS AND CONDITIONS EXISTING IN THE FIELD PRIOR TO CONSTRUCTION AND ORDERING MATERIALS.

THE RESIDENT ENGINEER SHALL CONTACT MR. DON CHIARUGI AREA TRAFFIC FIELD ENGINEER AT (847) 741-9857, A MINIMUM OF TWO WEEKS PRIOR TO PLACEMENT OF PERMANENT PAVEMENT MARKINGS.

DO NOT SCALE PLANS FOR CONSTRUCTION DIMENSIONS.

SAW CUTS WILL NOT BE PAID FOR SEPERATELY, BUT SHALL BE INCLUDED IN THE COST OF THE ITEM BEING REMOVED.

ANY REFERENCE TO STANDARDS THROUGHOUT THE PLANS OR SPECIAL PROVISIONS SHALL BE INTERPRETED AS THE LATEST STANDARD OF THE DEPARTMENT AS SHOWN.

ACCESS SHALL BE PROVIDED AT ALL TIMES TO PROPERTIES ABUTTING THE PROPOSED IMPROVEMENT.

THE CONTRACTOR SHALL CONTACT THE DISTRICT ONE TRAFFIC SUPERVISOR AT (847) 705-4470 A MINIMUM OF 72 HOURS IN ADVANCE OF BEGINNING WORK.

EXISTING CONFLICTING PAVEMENT MARKINGS SHALL BE REMOVED. THIS WORK SHALL BE PAID FOR AS PAVEMENT MARKING REMOVAL.

REMOVAL OF THE TEMPORARY PAVEMENT MARKINGS SHALL BE PAID FOR UNDER THE PAY ITEM WORK ZONE PAVEMENT MARKING REMOVAL.

THE EXISTING PAVEMENT MARKINGS THAT HAVE BEEN REMOVED SHALL BE REPLACED IN-KIND.

THE CONTRACTOR SHALL NOT MOUNT SIGNS ON EXISTING SIGNS.

THE CONTRACTOR SHALL COORDINATE THE EXACT PLACEMENT OF ADVANCED WARNING SIGNAGE WITH THE RESIDENT ENGINEER.

PRE-STAGE AND FINAL STAGE WORK SHALL UTILIZE HIGHWAY STANDARD 701306 FOR TRAFFIC CONTROL. THIS SHALL BE PAID FOR AS TRAFFIC CONTROL AND PROTECTION, STANDARD 701306.

THE CONTRACTOR SHALL MAINTAIN THE SURFACE DRAINAGE OF THE ROAD DURING CONSTRUCTION OF THIS PROJECT. THIS WORK SHALL NOT BE PAID FOR SEPARATELY, BUT SHALL BE CONSIDERED INCIDENTAL TO THE CONTRACT.

ANY LOOSE MATERIAL DEPOSITED IN THE FLOW LINE OF DITCHES, GUTTERS, CROSSROAD PIPES, OR DRAINAGE STRUCTURES DUE TO CONSTRUCTION OPERATIONS SHALL BE REMOVED AT THE CLOSE OF EACH WORKING DAY. AT THE CONCLUSION OF CONSTRUCTION OPERATIONS, ALL STRUCTURES SHALL BE FREE OF DIRT AND DEBRIS. THIS WORK SHALL NOT BE PAID FOR SEPARATELY, BUT SHALL BE CONSIDERED INCIDENTAL TO THE CONTRACT.

| MIXTURE REQUIREMENTS | | QUALITY MANAGEMENT PROGRAM (QMP) |
|--|-----------------|----------------------------------|
| MIXTURE USES | VOIDS @ Ndes | |
| APPROCH OVERLAY | | |
| HOT-MIX ASPHALT SURFACE COURSE, MIX "D", N70 (IL 9.5 mm) | 4% AT TO GYR. | QC/OA |
| QMP Designation: Quality Control/Quality Assurance (QC/OA) | | |

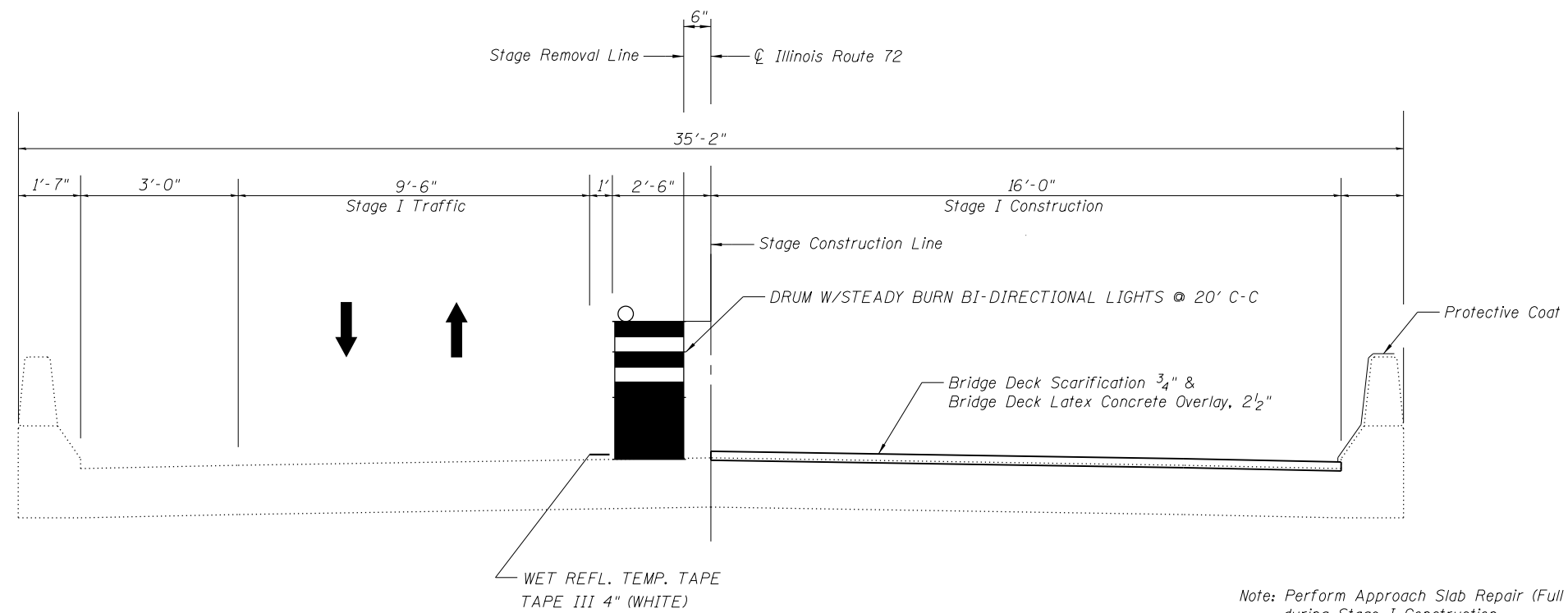
NOTE 1: THE UNIT WEIGHT USED TO CALCULATE ALL HMA SURFACE MIXTURE QUANTITIES IS 112 LBS/SOYD/IN
 NOTE 2: THE "AC TYPE" FOR POLYMERIZED HMA MIXES SHALL BE "SBS/SBR PG 76-22" AND FOR NON-POLYMERIZED HMA THE "AC TYPE" SHALL BE "PG 64-22" UNLESS MODIFIED BY DISTRICT ONE SPECIAL PROVISIONS.
 FOR USE OF RECYCLED MATERIALS SEE SPECIAL PROVISIONS.
 QUALITY MANAGEMENT PROGRAM (QMP) IDENTIFIES THE PARTICULAR QUALITY CONTROL SPECIFICATION THAT APPLIES TO THE HMA MIXTURE

| | | | | | | | | | | | |
|-------------|-------------------------------|------------|-----------|---|--|--------------------|-----------------|--------|--------------|---------------------------|--|
| FILE NAME : | USER NAME : abebawa | DESIGNED - | REVISED - | STATE OF ILLINOIS DEPARTMENT OF TRANSPORTATION | INDEX OF SHEETS, STATE STANDARDS AND GENERAL NOTES | F.A.P. RTE. | SECTION | COUNTY | TOTAL SHEETS | SHEET NO. | |
| Default | 1-ast-plen.dgn | DRAWN - | REVISED - | | | 557 | 128-B-1-1 | KANE | 20 | 2 | |
| | PLOT SCALE = 100.0000' / 1" = | CHECKED - | REVISED - | | | CONTRACT NO. 60M91 | | | | | |
| | PLOT DATE = 10/24/2014 | DATE - | REVISED - | | | SCALE: | SHEET OF SHEETS | STA. | TO STA. | ILLINOIS FED. AID PROJECT | |

| SUMMARY OF QUANTITIES | | | | CONSTRUCTION TYPE CODE | | | | SUMMARY OF QUANTITIES | | | | CONSTRUCTION TYPE CODE | | | | |
|-----------------------|--|--------|-----------------------------|------------------------|--|--|--|-----------------------|--|-------|-----------------------------|------------------------|--|--|--|--|
| CODE NO | ITEM | UNIT | 100% STATE TOTAL QUANTITIES | 0014 | | | | CODE NO | ITEM | UNIT | 100% STATE TOTAL QUANTITIES | 0014 | | | | |
| 40600985 | PORTLAND CEMENT CONCRETE SURFACE REMOVAL - BUTT JOINT | SQ YD | 107 | 107 | | | | * 78100105 | RAISED REFLECTIVE PAVEMENT MARKER (BRIDGE) | EACH | 2 | 2 | | | | |
| 40603340 | HOT-MIX ASPHALT SURFACE COURSE, MIX "D", N70 | TON | 12 | 12 | | | | 78200100 | MONODIRECTIONAL PRISMATIC BARRIER REFLECTOR | EACH | 8 | 8 | | | | |
| 44900105 | REMOVAL AND REPLACEMENT OF PREFORMED ELASTOMERIC JOINT SEALS FOR PAVEMENT | FOOT | 52 | 52 | | | | * 78200410 | GUARDRAIL MARKERS, TYPE A | EACH | 16 | 16 | | | | |
| 50300260 | BRIDGE DECK GROOVING | SQ YD | 186 | 186 | | | | * 78200530 | BARRIER WALL MARKERS, TYPE C | EACH | 2 | 2 | | | | |
| 50300300 | PROTECTIVE COAT | SQ YD | 47 | 47 | | | | 78300100 | PAVEMENT MARKING REMOVAL | SQ FT | 566 | 566 | | | | |
| 67000400 | ENGINEER'S FIELD OFFICE, TYPE A | CAL MO | 3 | 3 | | | | 78300200 | RAISED REFLECTIVE PAVEMENT MARKER REMOVAL | EACH | 8 | 8 | | | | |
| 67100100 | MOBILIZATION | L SUM | 1 | 1 | | | | X0326276 | TEMPORARY LIGHTING FOR SINGLE LANE STAGING | L SUM | 1 | 1 | | | | |
| 70100460 | TRAFFIC CONTROL AND PROTECTION, STANDARD 701306 | L SUM | 1 | 1 | | | | 40600275 | BITUMINOUS MATERIALS (PRIME COAT) | POUND | 38.4 | 38.4 | | | | |
| 70106500 | TEMPORARY BRIDGE TRAFFIC SIGNALS | EACH | 1 | 1 | | | | X7010216 | TRAFFIC CONTROL AND PROTECTION, (SPECIAL) | L SUM | 1 | 1 | | | | |
| 70106700 | TEMPORARY RUMBLE STRIPS | EACH | 12 | 12 | | | | X7030030 | WET REFLECTIVE TEMPORARY TAPE TYPE III, 4 INCH | FOOT | 2093 | 2093 | | | | |
| 70301000 | WORK ZONE PAVEMENT MARKING REMOVAL | SQ FT | 746 | 746 | | | | X7030055 | WET REFLECTIVE TEMPORARY TAPE TYPE III, 24 INCH | FOOT | 24 | 24 | | | | |
| * 78008210 | POLYUREA PAVEMENT MARKING TYPE I - LINE 4" | FOOT | 1698 | 1698 | | | | | | | | | | | | |
| * 78100100 | RAISED REFLECTIVE PAVEMENT MARKER | EACH | 6 | 6 | | | | | | | | | | | | |

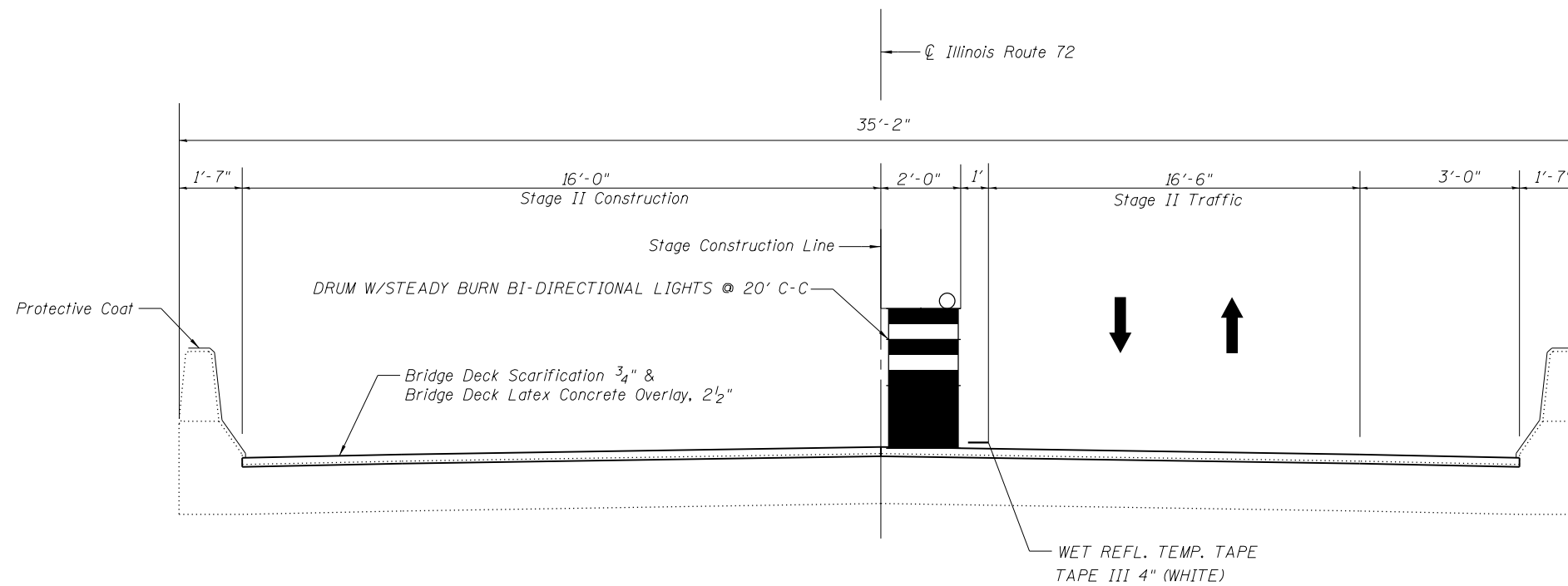
| | | | | | | | | | | | | | |
|-----------------------------|-------------------------|------------|-----------|---|---|-----------|----|--------|-------------|---------|--------|--------------|-----------|
| FILE NAME : | USER NAME : 000000 | DESIGNED - | REVISED - | STATE OF ILLINOIS DEPARTMENT OF TRANSPORTATION | SUMMARY OF QUANTITIES | | | | F.A.P. RTE. | SECTION | COUNTY | TOTAL SHEETS | SHEET NO. |
| PLLOT SCALE + 1000000' / 1" | PLLOT DATE + 10/24/2014 | DRAWN - | REVISED - | | SCALE: | SHEET NO. | OF | SHEETS | STA. | TO STA. | KANE | 18 | 3 |
| | | CHECKED - | REVISED - | | FED. ROAD DIST. NO. 1 ILLINOIS FED. AID PROJECT | | | | | | | | |
| | | DATE - | REVISED - | | CONTRACT NO. 60M91 | | | | | | | | |

*Specialty Items



STAGE I CROSS SECTION
Looking West

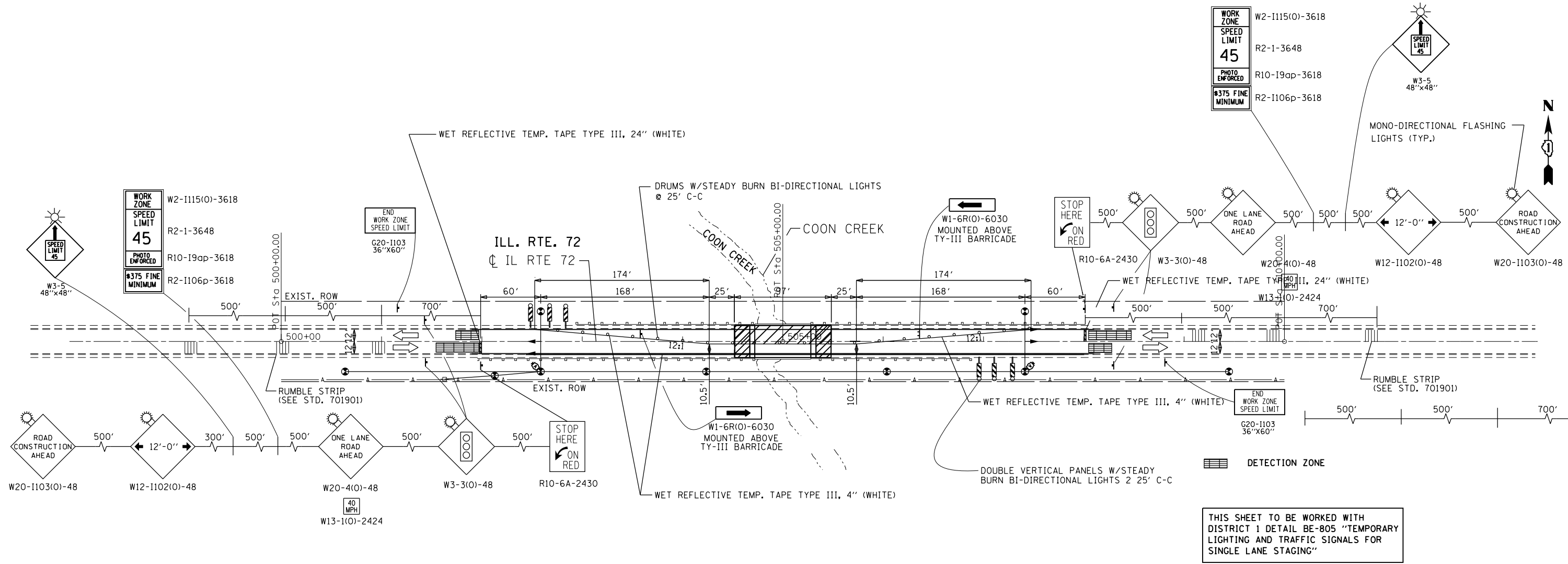
Note: Perform Approach Slab Repair (Full Depth) during Stage I Construction



STAGE II CROSS SECTION
Looking West

| | | | | | | | | | |
|------------------------|----------------|-----------|---|---|--------------------------|-----------|--------|--------------|-----------|
| USER NAME = abebawa | DESIGNED - TWO | REVISED - | STATE OF ILLINOIS DEPARTMENT OF TRANSPORTATION | STAGE CONSTRUCTION DETAILS S.N. 045-0053 | F.A.P. RTE. | SECTION | COUNTY | TOTAL SHEETS | SHEET NO. |
| PLOT SCALE = N/A | CHECKED - BHS | REVISED - | | | 557 | 128-B-1-1 | KANE | 20 | 5 |
| PLOT DATE = 10/24/2014 | DRAWN - TWO | REVISED - | | | CONTRACT NO. 60M91 | | | | |
| | CHECKED - BHS | REVISED - | | | SHEET NO. S3 OF 4 SHEETS | | | | |

FED. ROAD DIST. NO. 1 ILLINOIS FED. AID PROJECT



THIS SHEET TO BE WORKED WITH DISTRICT 1 DETAIL BE-805 "TEMPORARY LIGHTING AND TRAFFIC SIGNALS FOR SINGLE LANE STAGING"

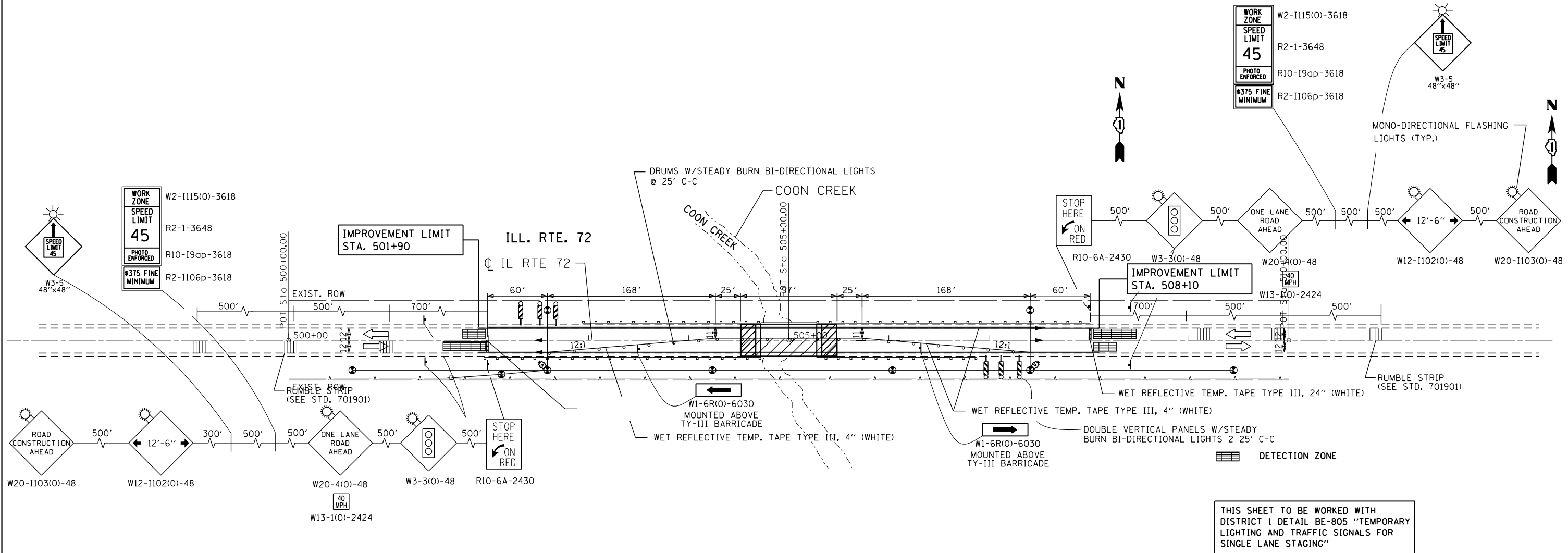
| | | | |
|---|------------------------------|------------|-----------|
| FILE NAME = | USER NAME = abebawa | DESIGNED - | REVISED - |
| ct:\pw\work\p\idot\abebawa\d0407110\119711-sht-plan.dgn | | DRAWN - | REVISED - |
| Default | PLOT SCALE = 100.0000' / in. | CHECKED - | REVISED - |
| | PLOT DATE = 10/24/2014 | DATE - | REVISED - |

STATE OF ILLINOIS
DEPARTMENT OF TRANSPORTATION

ILL RTE 72 OVER COON CREEK
SUGGESTED MAINTENANCE OF TRAFFIC- STAGE I

SCALE: SHEET OF SHEETS STA. TO STA.

| | | | | |
|---------------------------|-----------|--------|--------------------|-----------|
| F.A.P. RTE. | SECTION | COUNTY | TOTAL SHEETS | SHEET NO. |
| 557 | 128-B-1-1 | KANE | 20 | 6 |
| ILLINOIS FED. AID PROJECT | | | CONTRACT NO. 60M91 | |



THIS SHEET TO BE WORKED WITH DISTRICT 1 DETAIL BE-805 "TEMPORARY LIGHTING AND TRAFFIC SIGNALS FOR SINGLE LANE STAGING"

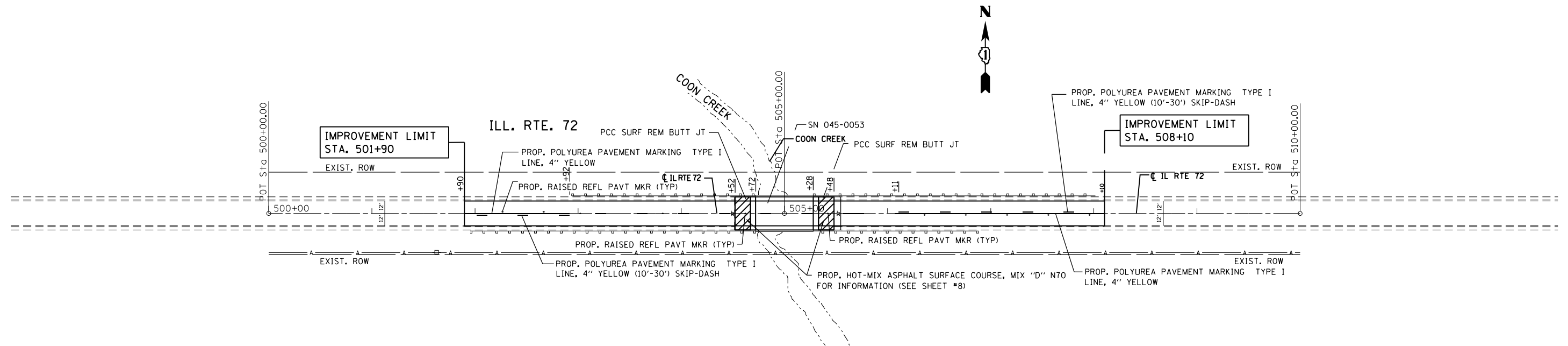
| | | | |
|--|------------------------------|------------|-----------|
| FILE NAME = | USER NAME = abebawa | DESIGNED - | REVISED - |
| c:\pwwork\pwwork\abebawa\d0407110\0119711-sht-plan.dgn | | DRAWN - | REVISED - |
| Default | PLOT SCALE = 100.0000' / in. | CHECKED - | REVISED - |
| | PLOT DATE = 10/24/2014 | DATE - | REVISED - |

**STATE OF ILLINOIS
DEPARTMENT OF TRANSPORTATION**

**IL RTE 72 OVER COON CREEK
SUGGESTED MAINTENANCE OF TRAFFIC- STAGE II**

| | | | | |
|---------------------------|-----------|--------|--------------------|-----------|
| F.A.P. RTE. | SECTION | COUNTY | TOTAL SHEETS | SHEET NO. |
| 557 | 128-B-1-1 | KANE | 20 | 7 |
| ILLINOIS FED. AID PROJECT | | | CONTRACT NO. 60M91 | |

SCALE: SHEET OF SHEETS STA. TO STA.



| | | | |
|--|------------------------------|------------|-----------|
| FILE NAME = | USER NAME = abebawa | DESIGNED - | REVISED - |
| ct:\pw\work\p1dot\abebawa\d0407110\119711-sht-plan.dgn | | DRAWN - | REVISED - |
| Default | PLOT SCALE = 100.0000' / in. | CHECKED - | REVISED - |
| | PLOT DATE = 10/24/2014 | DATE - | REVISED - |

**STATE OF ILLINOIS
DEPARTMENT OF TRANSPORTATION**

**IL RTE 72 OVER COON CREEK
PROP. ROADWAY AND PAVEMENT MARKING PLAN**

SCALE: SHEET OF SHEETS STA. TO STA.

| F.A.P. RTE. | SECTION | COUNTY | TOTAL SHEETS | SHEET NO. |
|--------------------|-----------|--------|---------------------------|-----------|
| 557 | 128-B-1-1 | KANE | 20 | 8 |
| CONTRACT NO. 60M91 | | | ILLINOIS FED. AID PROJECT | |

Existing Structure: S.N. 045-0053 was built in 1928 as S.B.I. Route 72, Section 128B. In 1981 as F.A.P. Route 557, Section 128-BR(1)79, the superstructure and pier were removed and replaced with a two-span reinforced concrete deck slab and a pile bent pier. The upper portion of the abutments was modified and reconstructed with reinforced concrete. The wingwalls were modified to account for widening of the structure.

Traffic to be maintained using stage construction.

No salvage

SCOPE OF WORK

1. Scarify 3/4 inch deck slab surface
2. Full depth concrete repair on approach slabs
3. Approach slab joint replacement
4. Place 2 1/2 inch latex concrete overlay on bridge deck
5. Hot-Mix Asphalt overlay on approach slabs
6. Apply protective coat to parapets

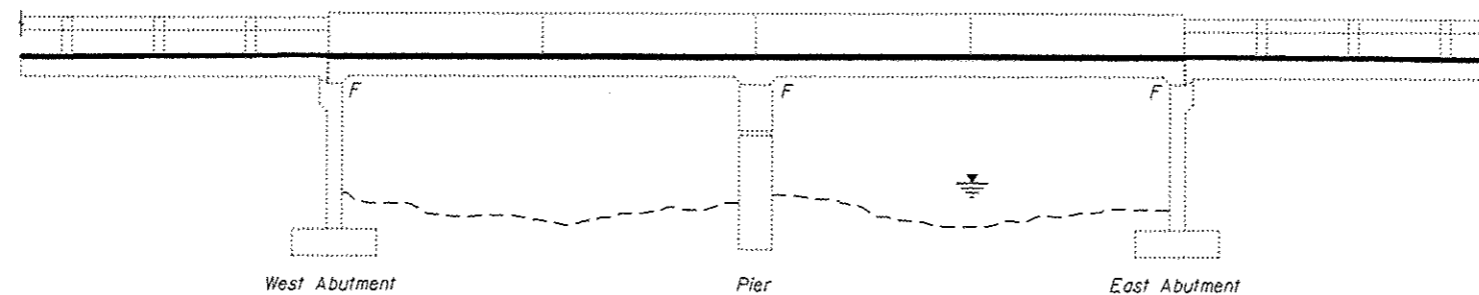
DESIGN SPECIFICATIONS

2002 AASHTO Standard Specifications for Highway Bridges, 17th Edition

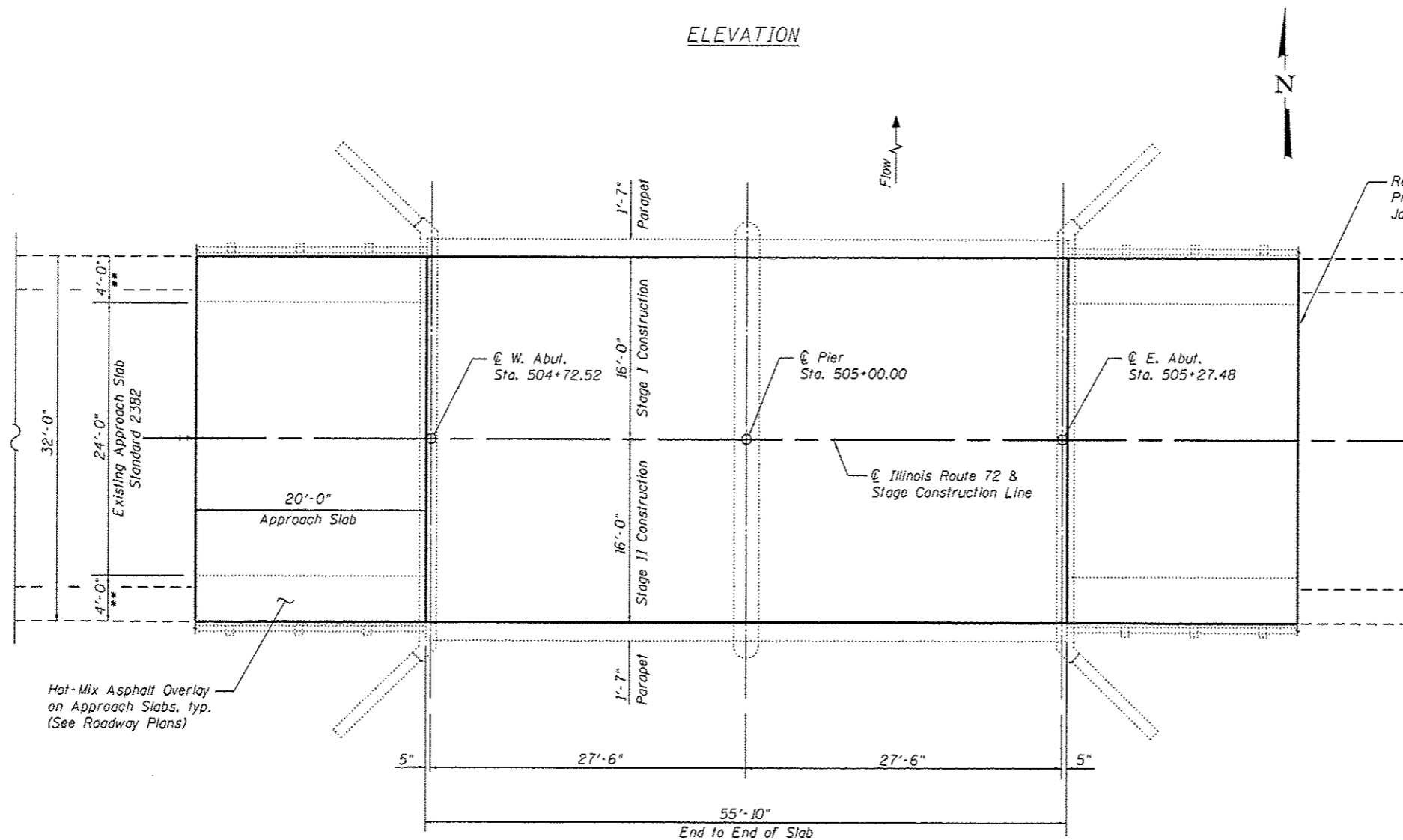
DESIGN STRESSES

FIELD UNITS

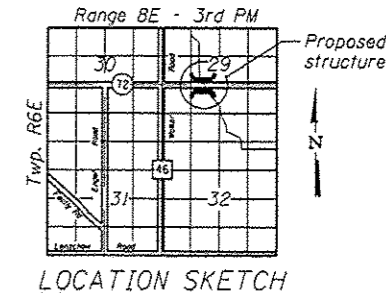
$f'_c = 3,500$ psi
 $f_y = 60,000$ psi (reinforcement)



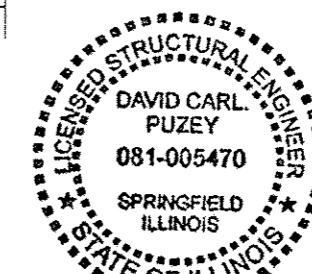
ELEVATION



PLAN



LOCATION SKETCH



David Carl Puzey 12/2/14
 Expires 11/30/16

**Existing Approach Shoulder Pavement Standard 2324

FILE NAME: c:\pwork\pudat\abebare\0450053\0119711-shs-plan.dgn

| | | |
|------------------------|----------------|-----------|
| USER NAME * abebare | DESIGNED - TWO | REVISED - |
| | CHECKED - BHS | REVISED - |
| PLOT SCALE * N/A | DRAWN - TWO | REVISED - |
| PLOT DATE * 10/24/2014 | CHECKED - BHS | REVISED - |

**STATE OF ILLINOIS
 DEPARTMENT OF TRANSPORTATION**

**GENERAL PLAN & ELEVATION
 S.N. 045-0053**

SHEET NO. 51 OF 3 SHEETS

| | | | | |
|--------------------|----------------------|----------------|---|----------------|
| F.A.P. RTE. 557 | SECTION 128-B-1-1 | COUNTY KANE | TOTAL SHEETS 20 | SHEET NO. 9 |
| CONTRACT NO. 60M91 | | | FED. ROAD DIST. NO. 1 ILLINOIS FED. AID PROJECT | |

GENERAL NOTES

Plan dimensions and details relative to existing plans are subject to nominal construction variations. The Contactor shall field verify existing dimensions and details affecting new construction and make necessary approved adjustments prior to construction or ordering of materials. Such variations shall not be cause for additional compensation for a change in scope of the work, however, the Contractor will be paid for the quantity actually furnished at the unit price bid for the work.

Stage Construction shall be utilized to maintain traffic during construction.

Joint openings shall be adjusted according to Article 520.04 of the Standard Specifications when the deck is poured at an ambient temperature other than 50° F.

INDEX OF SHEETS

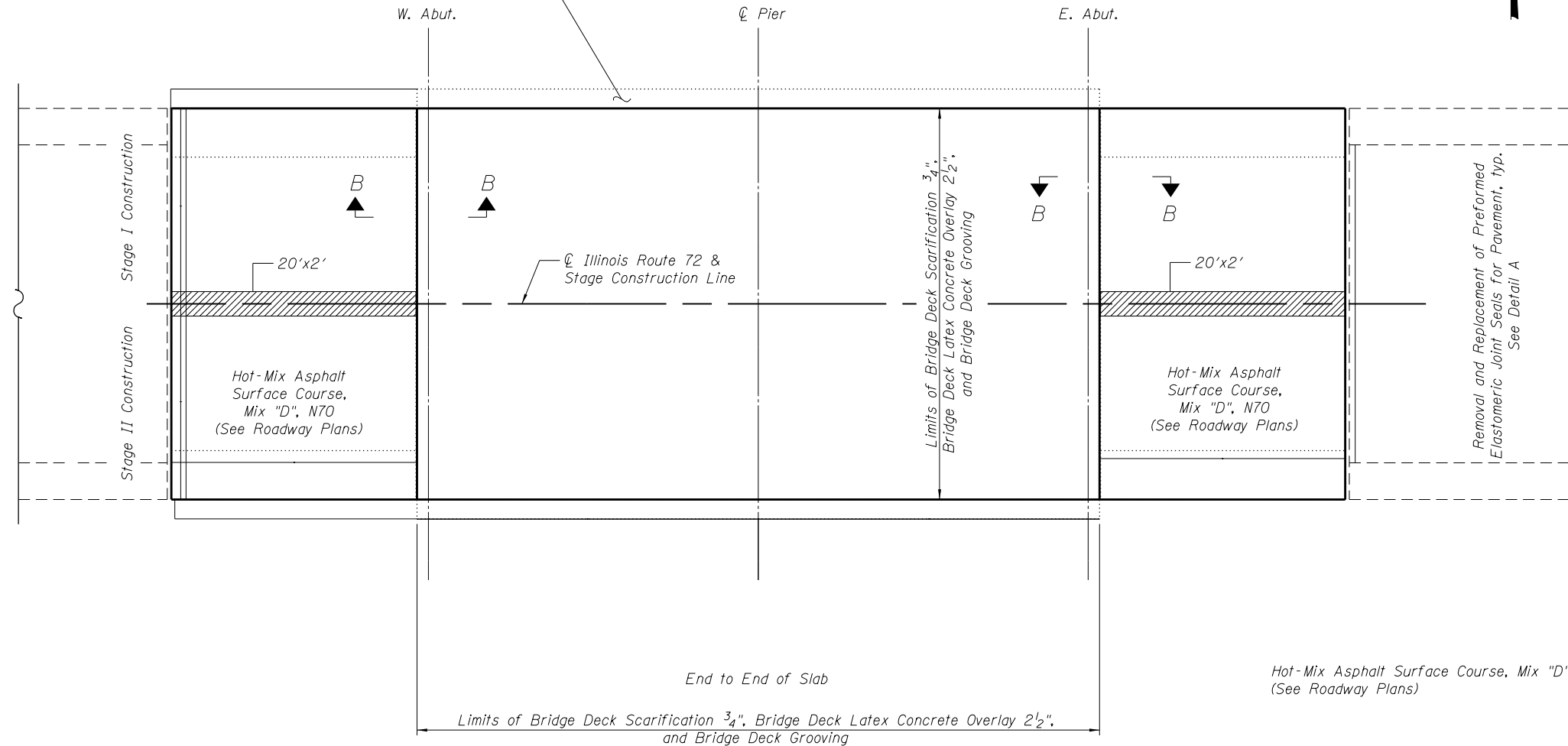
- S1. General Plan & Elevation
- S2. General Notes, Total Bill of Material and Index of Sheets
- S3. Bridge Deck and Approach Slab Repair Plan

TOTAL BILL OF MATERIAL

| ITEM | UNIT | SUPER | SUB | TOTAL |
|---|---------|-------|-----|-------|
| Removal and Replacement of Preformed Elastomeric Joint Seals for Pavement | Foot | 52 | | 52 |
| Bridge Deck Grooving | Sq. Yd. | 186 | | 186 |
| Protective Coat | Sq. Yd. | 47 | | 47 |
| Approach Slab Repair (Full Depth) | Sq. Yd. | 9 | | 9 |
| Bridge Deck Latex Concrete Overlay, 2 1/2 inches | Sq. Yd. | 197 | | 197 |
| Bridge Deck Scarification 3/4" | Sq. Yd. | 199 | | 199 |

| | | | | | | | | | | |
|--|------------------------------|------------|-----------|---|--|--------------------|----------------------|--------------|---------------------------|-----------|
| FILE NAME = | USER NAME = abebawa | DESIGNED - | REVISED - | STATE OF ILLINOIS DEPARTMENT OF TRANSPORTATION | IL RTE 72 OVER COON CREEK GENERAL NOTES, TOTAL BILL OF MATERIAL AND INDEX OF SHEETS | F.A.P. RTE. | SECTION | COUNTY | TOTAL SHEETS | SHEET NO. |
| c:\pwwork\pwwork\abebawa\d0407110\0119711-sht-plan.dgn | DRAWN - | REVISED - | 557 | | | 128-B-1-1 | KANE | 20 | 10 | |
| Default | PLOT SCALE = 100.0000' / in. | CHECKED - | REVISED - | | | CONTRACT NO. 60M91 | | | | |
| | PLOT DATE = 10/24/2014 | DATE - | REVISED - | | | SCALE: | SHEET S2 OF 3 SHEETS | STA. TO STA. | ILLINOIS FED. AID PROJECT | |

Protective coat shall be applied to the inside faces, top faces, and exposed ends of the parapets, typ.

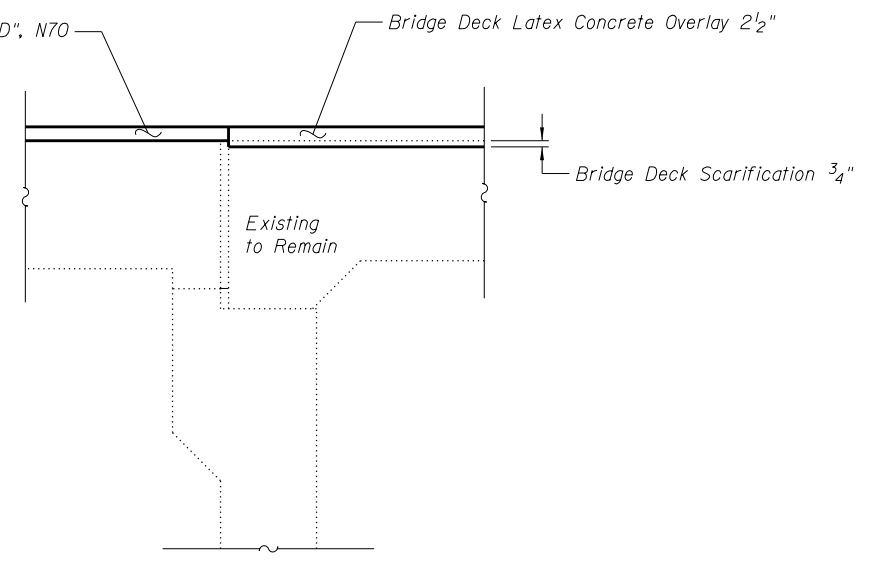


PLAN

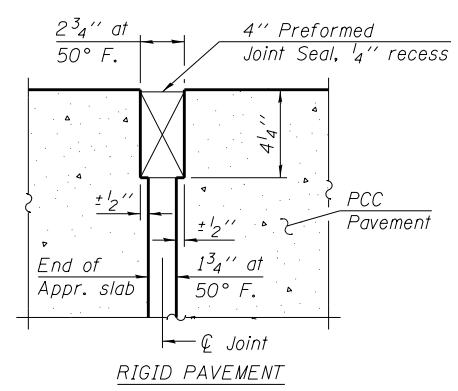
BILL OF MATERIAL

| Symbol | Item Description | Unit | Quantity |
|--------|---|---------|----------|
| | Removal and Replacement of Preformed Elastomeric Joint Seals for Pavement | Foot | 52 |
| | Bridge Deck Grooving | Sq. Yd. | 186 |
| | Protective Coat | Sq. Yd. | 47 |
| * | Approach Slab Repair (Full Depth) | Sq. Yd. | 9 |
| | Bridge Deck Latex Concrete Overlay, 2 1/2" | Sq. Yd. | 197 |
| | Bridge Deck Scarification 3/4" | Sq. Yd. | 199 |

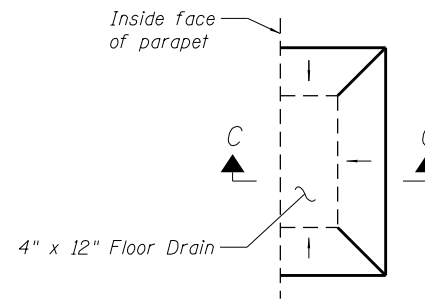
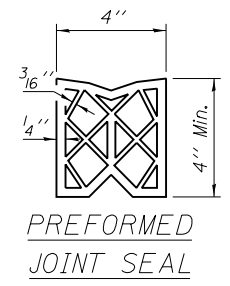
* Perform Approach Slab Repair (Full Depth) during Stage I Construction



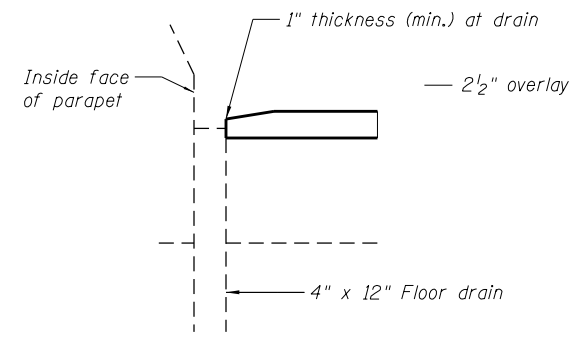
SECTION B-B



DETAIL A



DETAIL AT FLOOR DRAINS



SECTION C-C

FILE NAME = c:\pwwork\pwwork\abebawa\d0407110\119711-shr.plt.dgn

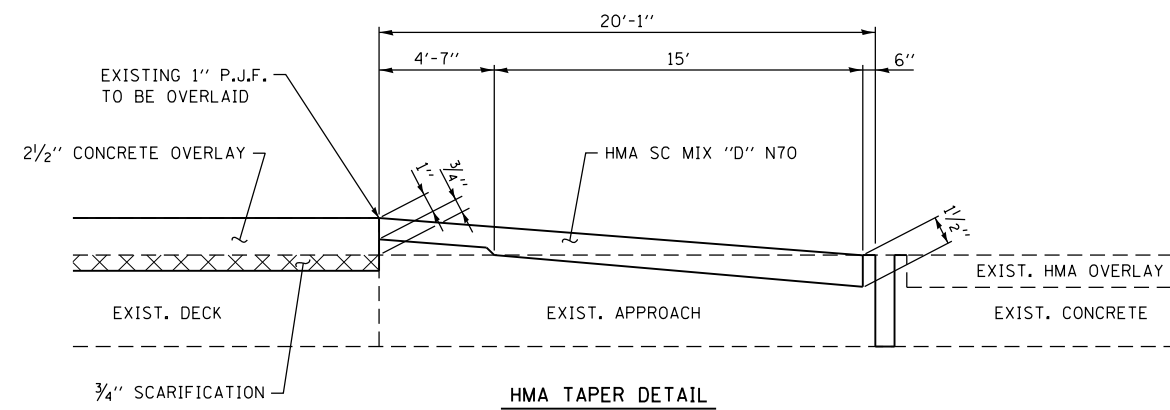
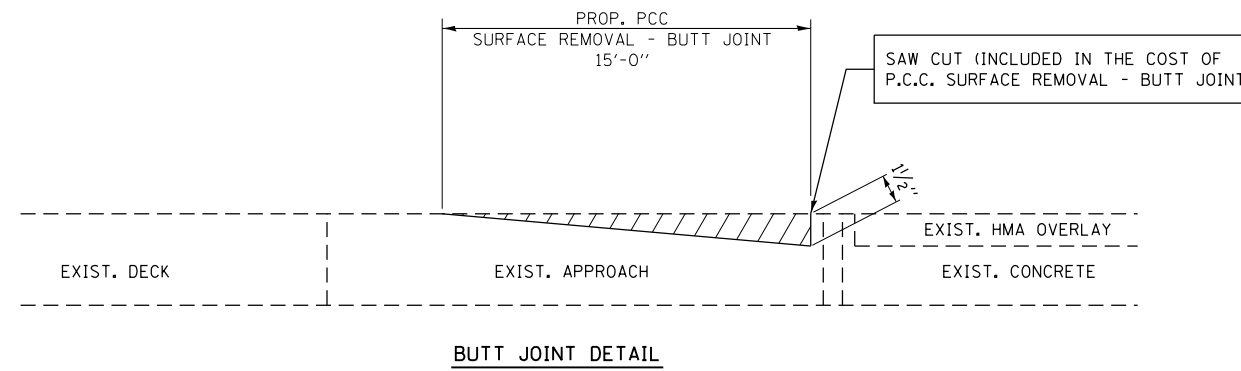
| | | |
|------------------------|----------------|-----------|
| USER NAME = abebawa | DESIGNED - TWO | REVISED - |
| PLOT SCALE = N/A | CHECKED - BHS | REVISED - |
| PLOT DATE = 10/24/2014 | DRAWN - TWO | REVISED - |
| | CHECKED - BHS | REVISED - |

**STATE OF ILLINOIS
DEPARTMENT OF TRANSPORTATION**

**BRIDGE DECK AND APPROACH SLAB REPAIR PLAN
S.N. 045-0053**

SHEET NO. S3 OF 3 SHEETS

| | | | | |
|---|-------------------|-------------|-----------------|--------------|
| F.A.P. RTE. 557 | SECTION 128-B-1-1 | COUNTY KANE | TOTAL SHEETS 20 | SHEET NO. 11 |
| CONTRACT NO. 60M91 | | | | |
| FED. ROAD DIST. NO. 1 ILLINOIS FED. AID PROJECT | | | | |



**TYPICAL BUTT JOINT AND HMA TAPER
FOR RESURFACING ONLY**

| | | | |
|---|------------------------------|------------|-----------|
| FILE NAME = | USER NAME = abebawa | DESIGNED - | REVISED - |
| c:\pwwork\pwwork\abebawa\d0407110\119711-sht-plan.dgn | | DRAWN - | REVISED - |
| Default | PLOT SCALE = 100.0000' / in. | CHECKED - | REVISED - |
| | PLOT DATE = 10/24/2014 | DATE - | REVISED - |

**STATE OF ILLINOIS
DEPARTMENT OF TRANSPORTATION**

**IL RTE 72 OVER COON CREEK
ROADWAY DETAILS**

SCALE: SHEET OF SHEETS STA. TO STA.

| F.A.P. RTE. | SECTION | COUNTY | TOTAL SHEETS | SHEET NO. |
|--------------------|-----------|--------|---------------------------|-----------|
| 557 | 128-B-1-1 | KANE | 20 | 12 |
| CONTRACT NO. 60M91 | | | ILLINOIS FED. AID PROJECT | |



W12-1103 (Width is 8D);

No border, Black on White;

"MAX WIDTH" D;

No border, Black on Orange;

"XX'-XX\"" D;

No border, Black on White;

"X MILES" D; "AHEAD" D;

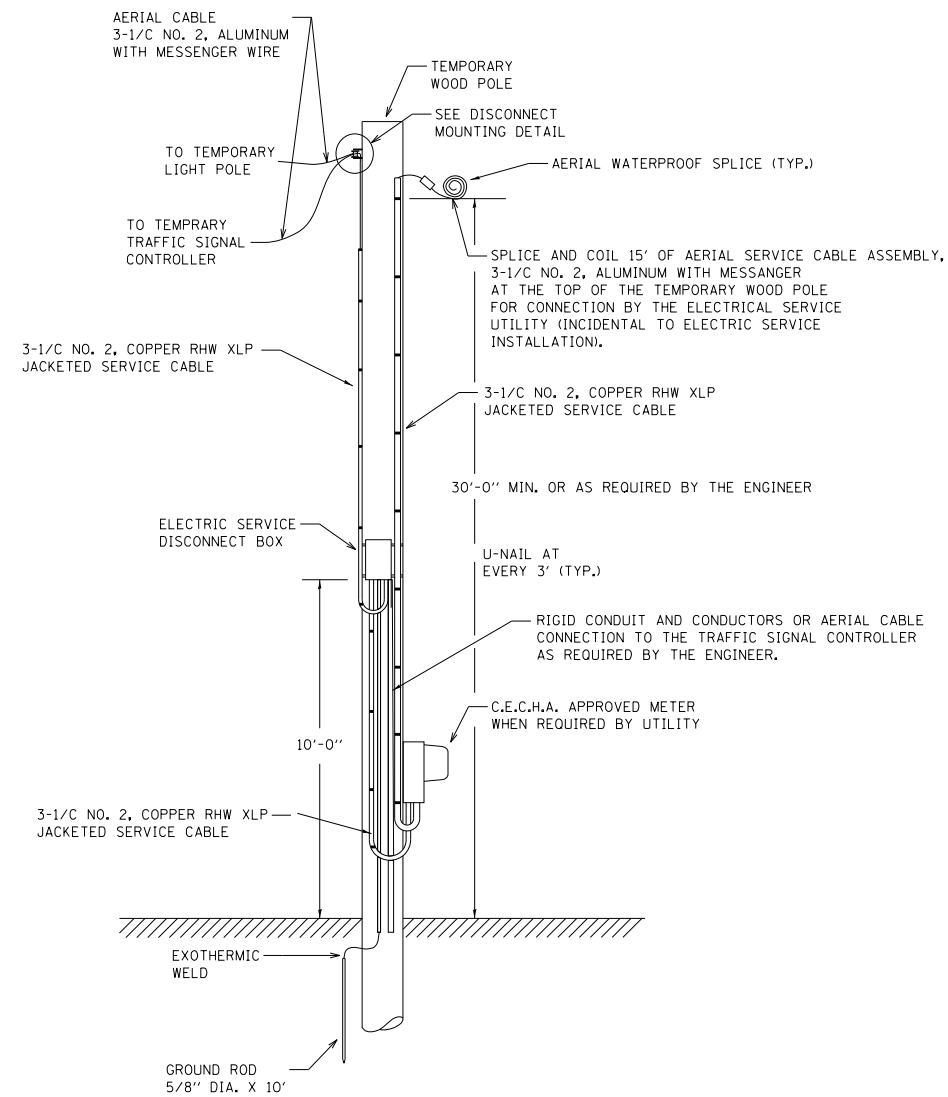
| | | | |
|---|------------------------------|------------|-----------|
| FILE NAME = | USER NAME = abebawa | DESIGNED - | REVISED - |
| ct:\pw\work\p\pidot\abebawa\d0407110\DI19711-sht-plan.dgn | | DRAWN - | REVISED - |
| Default | PLOT SCALE = 100.0000' / in. | CHECKED - | REVISED - |
| | PLOT DATE = 10/24/2014 | DATE - | REVISED - |

STATE OF ILLINOIS
DEPARTMENT OF TRANSPORTATION

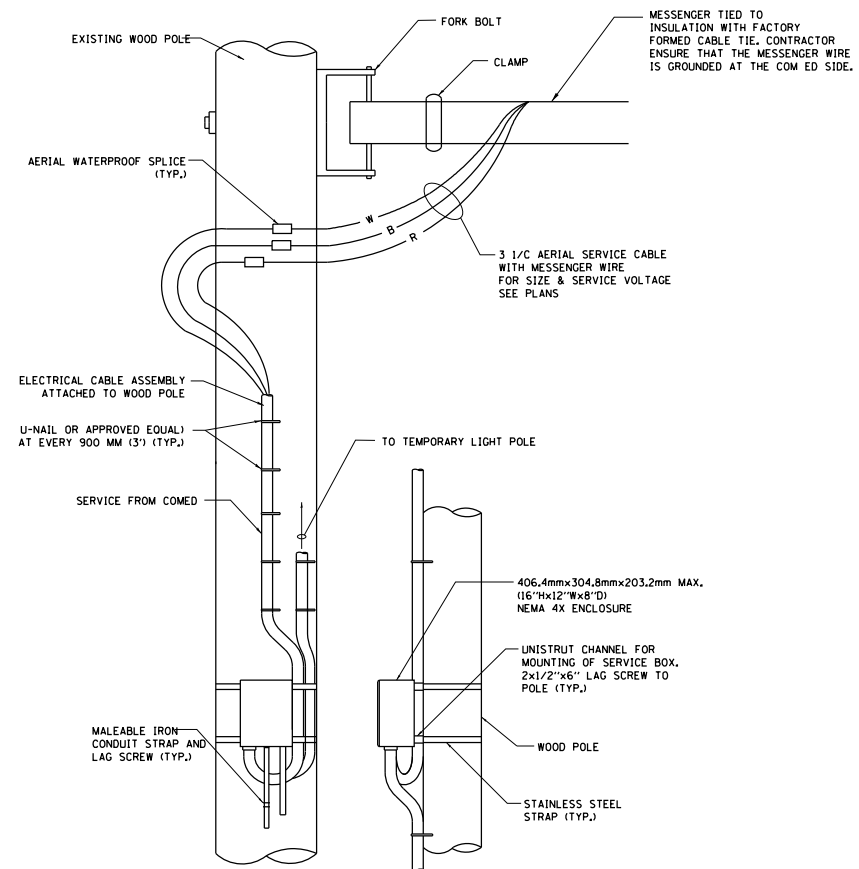
IL RTE 72 OVER COON CREEK
SIGN DETAILS

SCALE: SHEET OF SHEETS STA. TO STA.

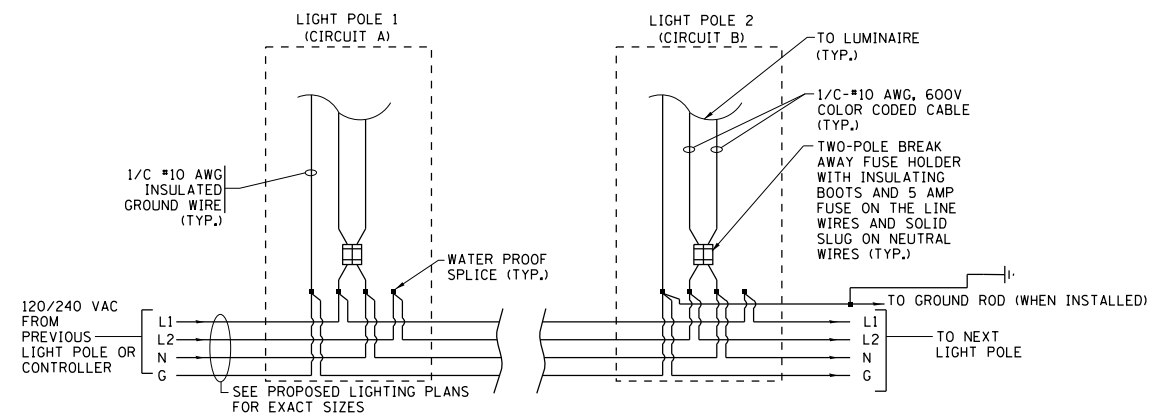
| F.A.P. RTE. | SECTION | COUNTY | TOTAL SHEETS | SHEET NO. |
|--------------------|-----------|--------|---------------------------|-----------|
| 557 | 128-B-1-1 | KANE | 20 | 14 |
| CONTRACT NO. 60M91 | | | ILLINOIS FED. AID PROJECT | |



TEMPORARY SERVICE INSTALLATION DETAIL
NOT TO SCALE



DISCONNECT MOUNTING DETAIL
NOT TO SCALE



LIGHT POLE WIRING DETAIL
NOT TO SCALE

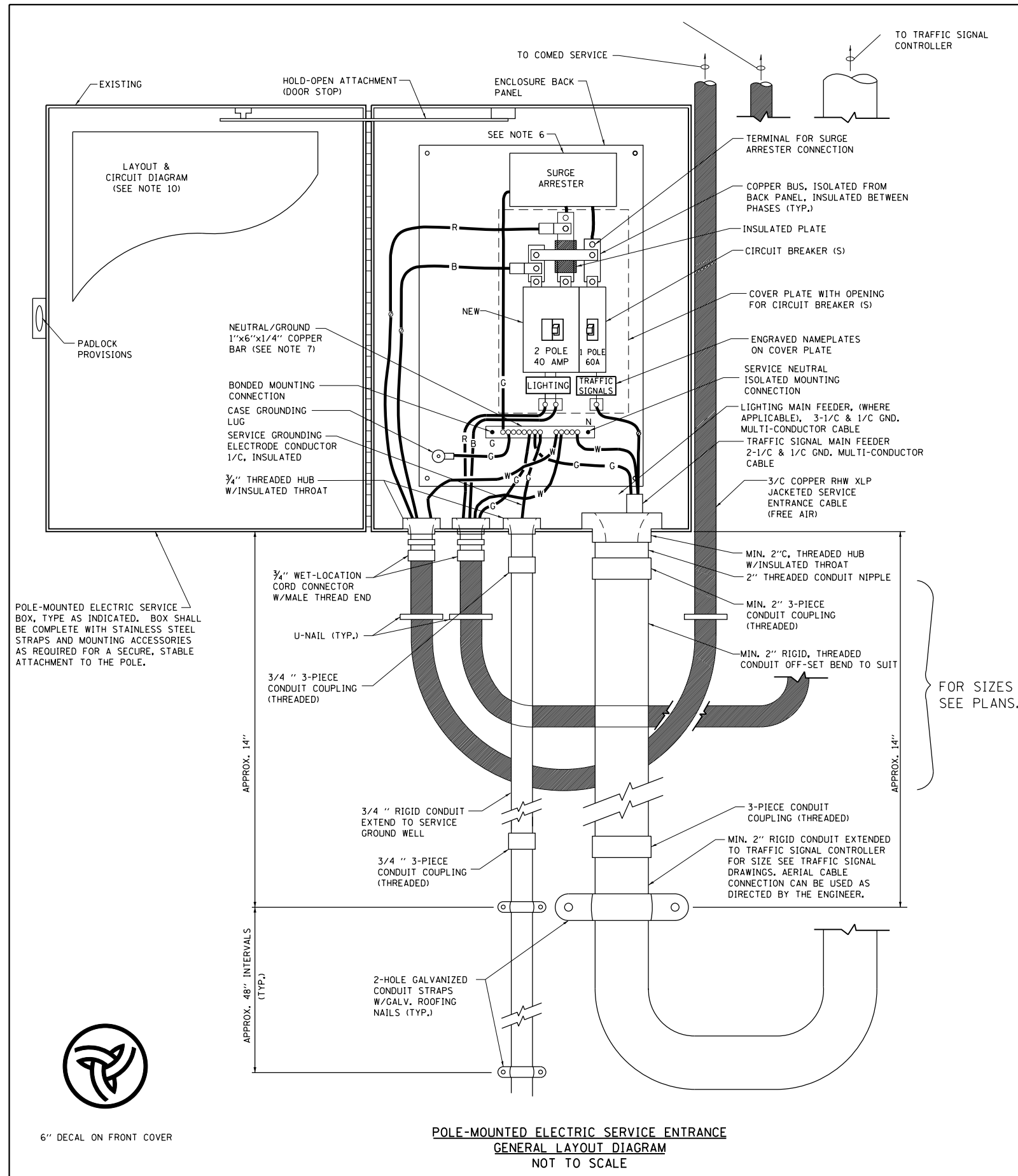
| | | | |
|--|-------------------------------|-----------------|-----------|
| FILE NAME = | USER NAME = abebawa | DESIGNED - MP | REVISED - |
| et:\pw\work\p\id\dot\abebawa\0407110\119711-sht-plan.dgn | | DRAWN - | REVISED - |
| | PLOT SCALE = 100.0000' / 1in. | CHECKED - | REVISED - |
| | PLOT DATE = 10/24/2014 | DATE - 01/14/10 | REVISED - |

**STATE OF ILLINOIS
DEPARTMENT OF TRANSPORTATION**

**TEMPORARY LIGHTING AND TRAFFIC SIGNALS
FOR SINGLE LANE STAGING**

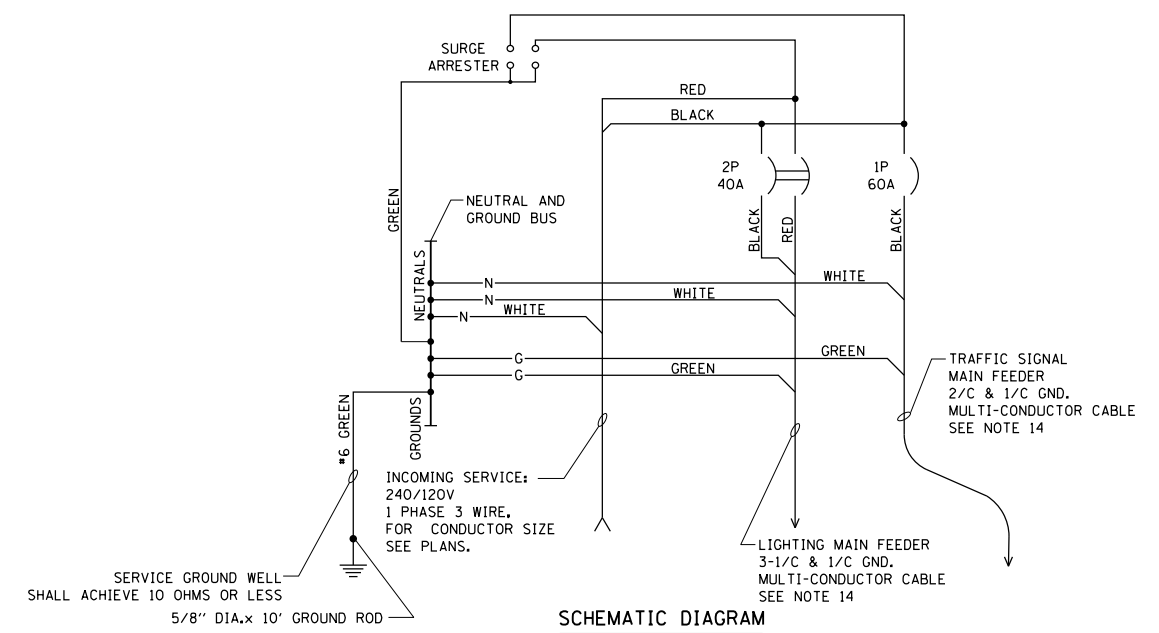
SCALE: NONE SHEET NO. 2 OF 3 SHEETS STA. TO STA.

| | | | | |
|---|-----------|--------------------|--------------|-----------|
| F.A.P. RTE. | SECTION | COUNTY | TOTAL SHEETS | SHEET NO. |
| 557 | 128-B-1-1 | KANE | 20 | 15 |
| BE-805 | | CONTRACT NO. 60M91 | | |
| FED. ROAD DIST. NO. 1 ILLINOIS FED. AID PROJECT | | | | |



NOTES:

- ELECTRIC SERVICE SHALL BE OF THE VOLTAGE INDICATED OR DESIGNATED BY THE ENGINEER, AND SERVICE DROP CABLE SHALL BE COMPATIBLE WITH THE SERVICE ACCORDINGLY. SOME INSTALLATIONS MAY CALL FOR SERVICE ENTRANCE EQUIPMENT SUITABLE FOR 3-WIRE SERVICE EVEN THOUGH INITIALLY WIRED FOR 2-WIRE SERVICE.
- THE POLE-MOUNTED ELECTRIC SERVICE BOX SHALL BE CONFIGURED AND FULLY EQUIPPED FOR 240/120V 3W SERVICE, COMPLETE WITH LIGHTING MAIN BREAKER AND TRAFFIC SIGNALS MAIN BREAKER AS REQUIRED.
- THE ELECTRIC SERVICE EQUIPMENT ASSEMBLY SHALL BE UL LISTED AS SUITABLE FOR USE AS SERVICE ENTRANCE EQUIPMENT.
- THE ELECTRIC SERVICE EQUIPMENT ENCLOSURE SHALL BE NEMA 4X STAINLESS STEEL, NOMINALLY 12"W X 16"H X 8"D, WITH A PIANO-HINGED DOOR, STEEL BACK PANEL, FAST-ACTING STAINLESS STEEL ENCLOSURE CLAMPS, PADLOCK PROVISIONS AND DOOR STOP, HOFFMAN CATALOG NO. A-16H1208SS6LP/A-16 P12/A-DSTOPK/C-PMK12, OR APPROVED EQUAL.
- CIRCUIT BREAKERS SHALL BE THERMAL MAGNETIC BOLT-ON TYPE WITH A MINIMUM INTERRUPTING CAPACITY OF 25,000 SYMMETRICAL AMPERES AT 240 VOLTS. THEY SHALL BE LOCKABLE IN THE "OFF" POSITION FOR COMPLIANCE WITH OSHA LOCK-OUT/TAG-OUT REQUIREMENTS. HANDLES SHALL BE TRIP FREE.
- THE SURGE PROTECTOR SHALL BE SUITABLE FOR THE SERVICE VOLTAGE SINGLE PHASE 60HZ AC, WITH A SURGE ENERGY CAPABILITY OF 2160 JOULES OR BETTER AT 8/20 MICRO-SECONDS, RATED -40 TO 60 DEGREES C., WITH LED OPERATING INDICATORS, AND SHALL BE UL LISTED PER UL 1449, CUTLER-HAMMER CMOV230L065XST OR APPROVED EQUAL.
- BUS BARS, CONNECTORS, AND LUGS SHALL BE COPPER, INSULATED AND ISOLATED, AND CONFIGURED TO PREVENT SHORTED CONDITIONS FROM TIGHTENING TERMINATIONS, ETC. THE OVERALL BUS SECTION SHALL BE CONFIGURED BEHIND AN INSULATING BARRIER SHIELD WHICH IS REMOVABLE FOR ACCESS TO CONNECTIONS, OR THE ASSEMBLY SHALL BE A MANUFACTURED SPECIALTY PANELBOARD, CUTLER-HAMMER PRL2A OR APPROVED EQUAL.
- THE COMBINATION GROUND AND NEUTRAL BAR SHALL BE CONFIGURED WITH SEPARATE GROUND AND NEUTRAL SECTIONS AND SPARE TERMINALS AS INDICATED. THE HEADS OF GROUND SCREWS SHALL BE PAINTED GREEN. THE HEADS OF NEUTRAL SCREWS SHALL BE PAINTED WHITE. THE SERVICE NEUTRAL AND SERVICE GROUNDING ELECTRODE CONDUCTOR SHALL BE TERMINATED ADJACENT TO EACH OTHER AT THE DIVIDE BETWEEN THE SECTIONS AND WIRING SHALL BE TERMINATED ONLY UPON THE APPROPRIATE SECTION.
- THE WIRING TERMINALS, INCLUDING THE GROUND/NEUTRAL BAR SHALL BE ARRANGED TO PROVIDE ADEQUATE ROOM FOR PERFORMING FIELD TERMINATIONS.
- A PLASTIC LAMINATED LAYOUT AND CIRCUIT DIAGRAM SHALL BE MECHANICALLY SECURED TO THE INTERIOR SIDE OF THE ENCLOSURE DOOR.
- A 2-COLOR ENGRAVED PLASTIC NAMEPLATE, ATTACHED WITH SCREWS, AND ENGRAVED AS INDICATED, SHALL BE PROVIDED FOR EACH MAIN BREAKER.
- LUGS AND CONNECTORS SHALL BE RATED FOR 75 C CONDUCTOR.
- THE EXACT MOUNTING HEIGHT OF THE BOX SHALL BE FIELD DETERMINED TO AVOID OBSTRUCTIONS AND PUBLIC ACCESS. TYPICAL HEIGHT SHALL BE APPROXIMATELY 10 FEET ABOVE GRADE.



SCHEMATIC DIAGRAM

**POLE-MOUNTED ELECTRIC SERVICE ENTRANCE
GENERAL LAYOUT DIAGRAM
NOT TO SCALE**

| | | | |
|--|---------------------|-----------------|-----------|
| FILE NAME = | USER NAME = abebawa | DESIGNED - MP | REVISED - |
| et:\pw\work\p\id\dot\abebawa\d0407110\0119711-sht-plan.dgn | | DRAWN - | REVISED - |
| | | CHECKED - | REVISED - |
| | | DATE - 01/14/10 | REVISED - |

**STATE OF ILLINOIS
DEPARTMENT OF TRANSPORTATION**

| | | | |
|---|-------------------------|------|---------|
| TEMPORARY LIGHTING AND TRAFFIC SIGNALS FOR SINGLE LANE STAGING | | | |
| SCALE: NONE | SHEET NO. 3 OF 3 SHEETS | STA. | TO STA. |

| | | | | |
|---|-----------|---------------------------|--------------|-----------|
| F.A.P. RTE. | SECTION | COUNTY | TOTAL SHEETS | SHEET NO. |
| 557 | 128-B-I-1 | KANE | 20 | 16 |
| BE-805 | | CONTRACT NO. 60M91 | | |
| FED. ROAD DIST. NO. 1 ILLINOIS FED. AID PROJECT | | | | |



6" DECAL ON FRONT COVER



TRAFFIC CONTROL AND PROTECTION FOR SIDE ROADS, INTERSECTIONS, AND DRIVEWAYS

NOTES:

A. FOR NO LANE RESTRICTION ON THE SIDE ROAD OR DRIVEWAYS

1. SIDE ROAD WITH A SPEED LIMIT OF 40 MPH (60 km/h) OR LESS AS SHOWN ON THE DRAWING AND AS DIRECTED BY THE ENGINEER:

a) ONE ROAD CONSTRUCTION AHEAD SIGN 36 x 36 (900x900) WITH A FLASHER AND FLAG MOUNTED ON IT APPROXIMATELY 200' (60 m) IN ADVANCE OF THE MAIN ROUTE.

b) THE CLOSED PORTION OF THE MAIN ROUTE SHALL BE PROTECTED BY BLOCKING WITH TYPE I, TYPE II OR TYPE III BARRICADES, 1/3 OF THE CROSS SECTION OF THE CLOSED PORTION.

2. SIDE ROAD WITH A SPEED LIMIT GREATER THAN 40 MPH (60 km/h) AS SHOWN ON THE DRAWING AND AS DIRECTED BY THE ENGINEER:

a) ONE ROAD CONSTRUCTION AHEAD SIGN 48 x 48 (1.2 m x 1.2 m) WITH A FLASHER MOUNTED ON IT APPROXIMATELY 500' (150 m) IN ADVANCE OF THE MAIN ROUTE.

b) THE CLOSED PORTION OF THE MAIN ROUTE SHALL BE PROTECTED BY BLOCKING WITH TYPE III BARRICADES, 1/2 OF THE CROSS SECTION OF THE CLOSED PORTION.

3. WHEN THE SIDE ROAD LIES BETWEEN THE BEGINNING OF THE MAINLINE SIGNING AND THE WORK ZONE, A SINGLE HEADED ARROW (M6-1) SHALL BE USED IN LIEU OF THE DOUBLE HEADED ARROW (M6-4).

B. FOR A LANE CLOSURE ON A SIDE ROAD OR DRIVEWAY:

USE APPLICABLE PORTIONS OF THE TYPICAL APPLICATION OF TRAFFIC CONTROL DEVICES (STD. 701501, STD. 701606 OR THE APPROPRIATE STANDARD). THE SPACING OF SIGNS AND BARRICADES SHALL BE ADJUSTED FOR FIELD CONDITIONS AS DIRECTED BY THE ENGINEER. THE DIRECTIONAL ARROW SHALL BE COVERED OR REMOVED WHEN NO LONGER CONSISTENT WITH THE SIDE ROAD LANE CLOSURE.

C. ADVANCE WARNING SIGNS ARE TO BE OMITTED ON DRIVEWAY UNLESS OTHERWISE NOTED.

D. THE TRAFFIC CONTROL AND PROTECTION FOR SIDE ROADS, INTERSECTIONS, AND DRIVEWAYS SHALL BE INCIDENTAL TO THE COST OF SPECIFIED TRAFFIC CONTROL STANDARDS OR ITEMS.

All dimensions are in millimeters (inches) unless otherwise shown.

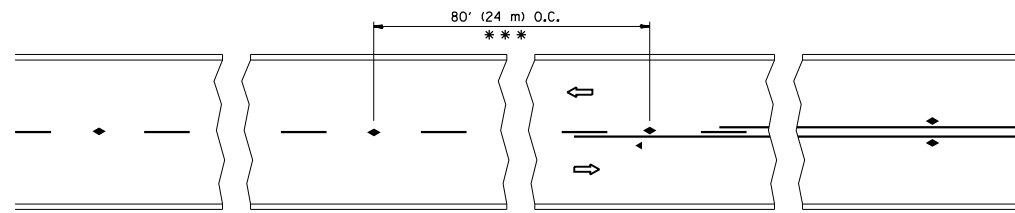
| | | | |
|---|------------------------------|----------------|-------------------------------|
| FILE NAME = | USER NAME = abebawa | DESIGNED - LHA | REVISED - J. OBERLE 10-18-95 |
| et:\pwork\pwork\abebawa\d0407110\0119711-sht-plan.dgn | | DRAWN - | REVISED - A. HOUSEH 03-06-96 |
| | PLOT SCALE = 100.0000' / in. | CHECKED - | REVISED - A. HOUSEH 10-15-96 |
| | PLOT DATE = 10/24/2014 | DATE - 06-89 | REVISED - T. RAMMACH 01-06-00 |

**STATE OF ILLINOIS
DEPARTMENT OF TRANSPORTATION**

**TRAFFIC CONTROL AND PROTECTION FOR
SIDE ROADS, INTERSECTIONS, AND DRIVEWAYS**

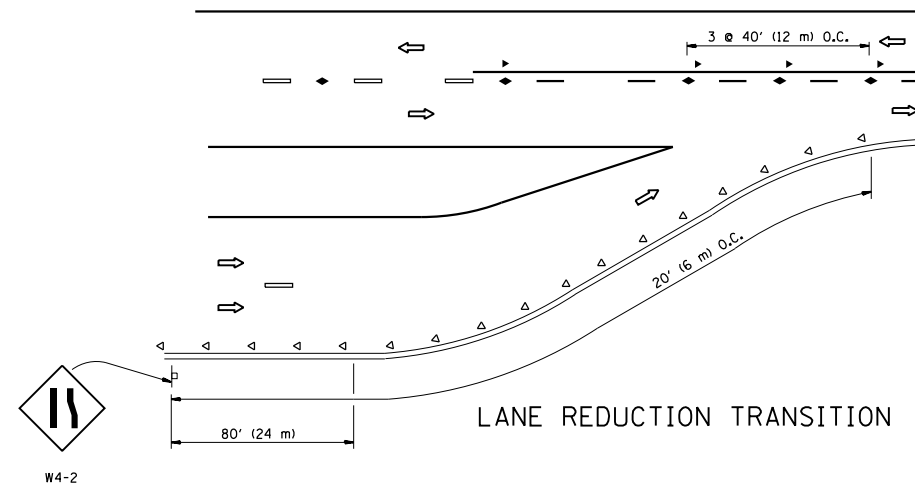
SCALE: NONE SHEET NO. 1 OF 1 SHEETS STA. TO STA.

| F.A.P. RTE. | SECTION | COUNTY | TOTAL SHEETS | SHEET NO. |
|---|-----------|--------|---------------------------|-----------|
| 557 | 128-B-I-1 | KANE | 20 | 17 |
| TC-10 | | | CONTRACT NO. 60M91 | |
| FED. ROAD DIST. NO. 1 ILLINOIS FED. AID PROJECT | | | | |

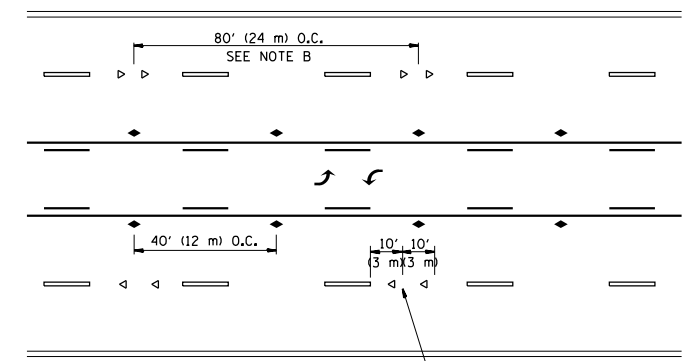


*** REDUCE TO 40' (12 m) O.C. ON CURVES WITH POSTED OR ADVISORY SPEED 45 M.P.H. (70 km/h) OR LESS.

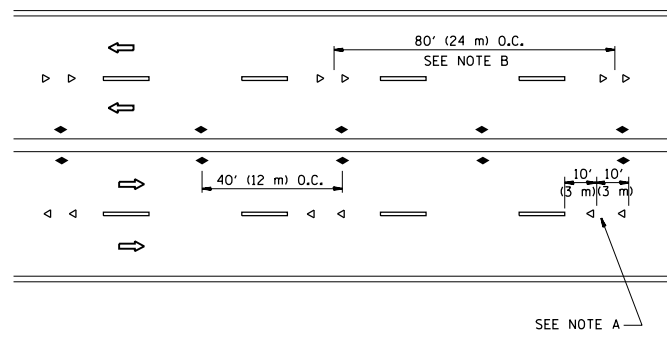
TWO-LANE/TWO-WAY



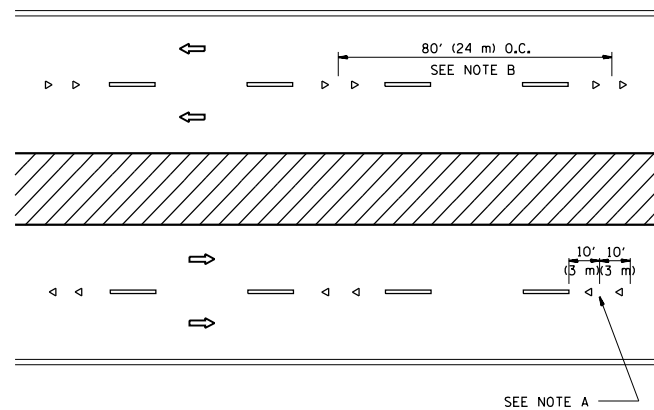
LANE REDUCTION TRANSITION



TWO-WAY LEFT TURN



MULTI-LANE/UNDIVIDED



MULTI-LANE/DIVIDED

GENERAL NOTES

1. MARKERS USED WITH DASHED LINES SHALL BE CENTERED IN THE GAP BETWEEN SEGMENTS.
2. MARKERS USED ADJACENT TO SOLID LINES SHALL BE OFFSET 2 TO 3 (50 TO 75) TOWARD TRAFFIC AS SHOWN.
3. MARKERS THROUGH TANGENTS LESS THAN 500' (150 m) IN LENGTH BETWEEN CURVES SHALL BE INSTALLED AT THE LESSER OF THE TWO CURVE SPACINGS.

SYMBOLS

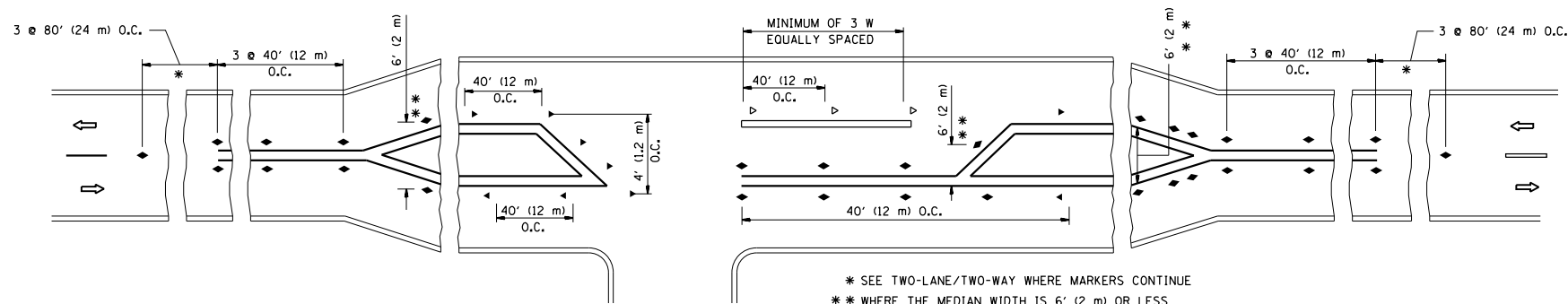
- YELLOW STRIPE
- WHITE STRIPE
- ◀ ONE-WAY AMBER MARKER
- ◁ ONE-WAY CRYSTAL MARKER (W/O)
- ◆ TWO-WAY AMBER MARKER

LANE MARKER NOTES

- A. USE DOUBLE LANE LINE MARKERS SPACED AS SHOWN.
- B. REDUCE TO 40' (12 m) O.C. ON CURVES WHERE ADVISORY SPEEDS ARE 10 M.P.H (20 km/h) LOWER THAN POSTED SPEEDS.

DESIGN NOTES

1. DOUBLE LANE LINE MARKERS SHALL BE USED UNLESS SPECIFIED OTHERWISE.
2. EXCEPT AS SHOWN ON THE LANE REDUCTION TRANSITION AND FREEWAY EXIT RAMP DETAIL, MARKERS ARE NOT TO BE SPECIFIED ON RIGHT EDGE LINES.
3. THE EXACT MARKER LIMITS, SPACING, AND COLOR SHALL BE INCLUDED IN THE PLANS WHEN STANDARD SPECIFICATIONS ARE NOT BEING USED.
4. MARKERS SHOULD NOT BE USED ALONGSIDE CURBS EXCEPT FOR EXTREMELY SHORT SECTIONS OF CURBS WHERE NOT MORE THAN TWO MARKERS WOULD BE INVOLVED.



LEFT TURN

* SEE TWO-LANE/TWO-WAY WHERE MARKERS CONTINUE
 ** WHERE THE MEDIAN WIDTH IS 6' (2 m) OR LESS USE TWO-WAY MARKERS.

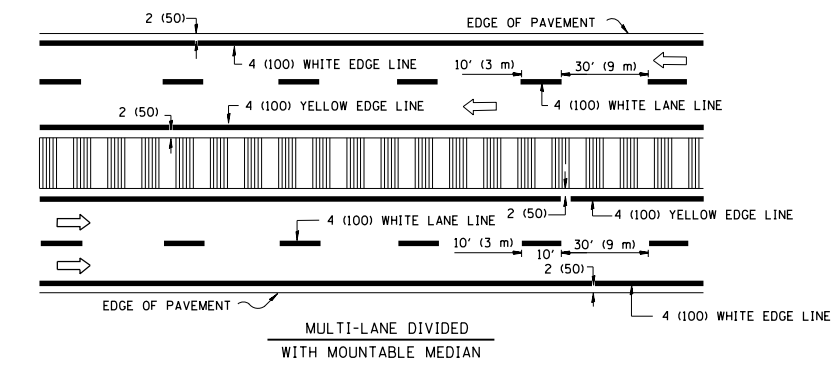
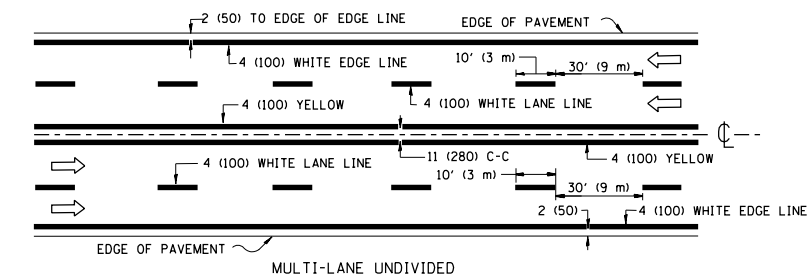
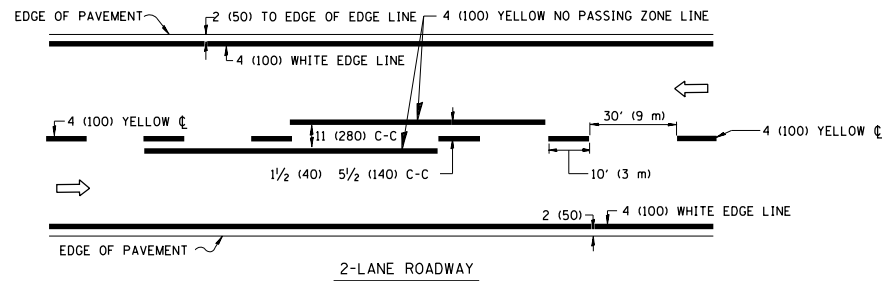
All dimensions are in inches (millimeters) unless otherwise shown.

| | | | |
|---|------------------------------|------------|---------------------------------|
| FILE NAME = | USER NAME = abebawa | DESIGNED - | REVISED - T. RAMMACHER 09-19-94 |
| et:\pw\work\p\dot\abebawa\d0407110\0119711-sht-plan.dgn | | DRAWN - | REVISED - T. RAMMACHER 03-12-99 |
| | PLOT SCALE = 100.0000' / in. | CHECKED - | REVISED - T. RAMMACHER 01-06-00 |
| | PLOT DATE = 10/24/2014 | DATE - | REVISED - C. JUCIUS 09-09-09 |

STATE OF ILLINOIS
 DEPARTMENT OF TRANSPORTATION

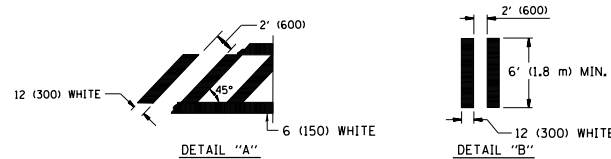
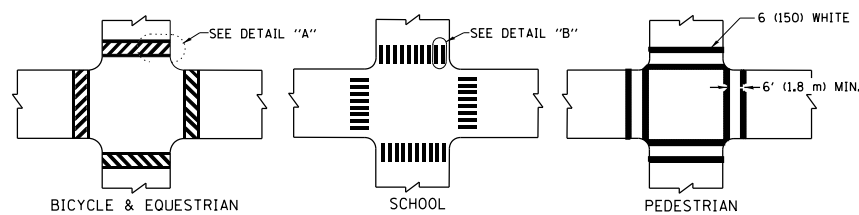
| | | | |
|--|-------------------------|------|---------|
| TYPICAL APPLICATIONS | | | |
| RAISED REFLECTIVE PAVEMENT MARKERS (SNOW-PLOW RESISTANT) | | | |
| SCALE: NONE | SHEET NO. 1 OF 1 SHEETS | STA. | TO STA. |

| | | | | |
|---|-----------|--------------------|--------------|-----------|
| F.A.P. RTE. | SECTION | COUNTY | TOTAL SHEETS | SHEET NO. |
| 557 | 128-B-1-1 | KANE | 20 | 18 |
| TC-11 | | CONTRACT NO. 60M91 | | |
| FED. ROAD DIST. NO. 1 ILLINOIS FED. AID PROJECT | | | | |

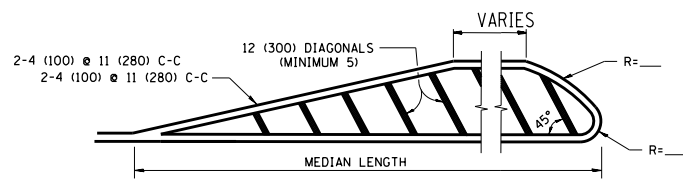
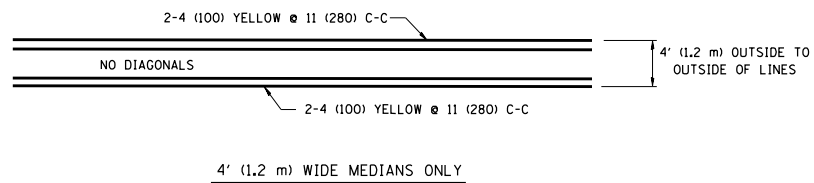


NOTE: MEDIANS WITH BARRIER CURB DO NOT REQUIRE AN EDGE LINE

TYPICAL LANE AND EDGE LINE MARKING

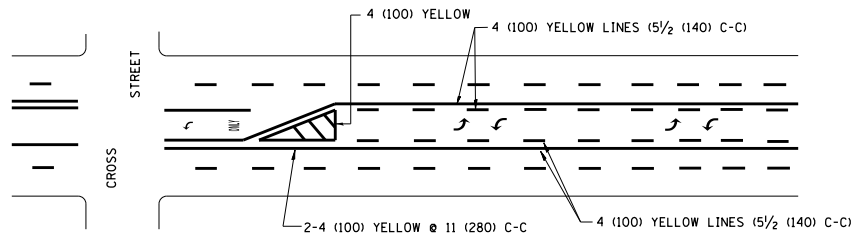


TYPICAL CROSSWALK MARKING

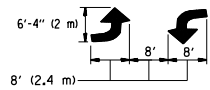


DIAGONAL LINE SPACING: 50' (15 m) C-C (LESS THAN 30MPH (50 km/h))
75' (25 m) C-C 30MPH (50 km/h) TO 45MPH (70 km/h)
150' (45 m) C-C (MORE THAN 45MPH (70 km/h))

MEDIANS OVER 4' (1.2 m) WIDE

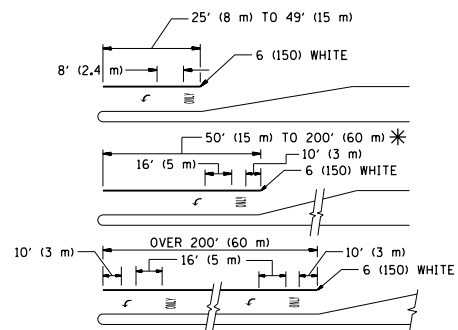


A MINIMUM OF TWO PAIRS OF TURN ARROWS SHALL BE USED, WHITE IN COLOR. ADDITIONAL PAIRS SHALL BE PLACED AT 200' (60 m) TO 300' (90 m) INTERVALS.



MEDIAN WITH TWO-WAY LEFT TURN LANE

TYPICAL PAINTED MEDIAN MARKING

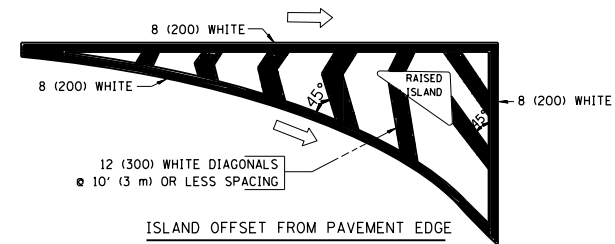


FULL SIZE LETTERS 8' (2.4 m) AND ARROWS SHALL BE USED.
AREA = 15.6 SQ. FT. (1.5 m²) ONLY AREA = 20.8 SQ. FT. (1.9 m²)

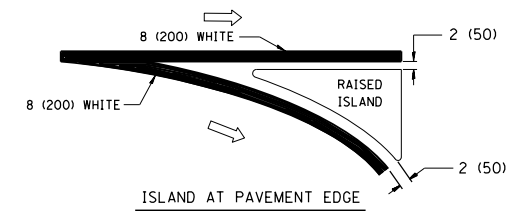
* TURN LANES IN EXCESS OF 400' (120 m) IN LENGTH MAY HAVE AN ADDITIONAL SET OF ARROW - "ONLY" INSTALLED MIDWAY BETWEEN THE OTHER TWO SETS OF ARROW - "ONLY".

TYPICAL LEFT (OR RIGHT) TURN LANE

TYPICAL TURN LANE MARKING



ISLAND OFFSET FROM PAVEMENT EDGE



TYPICAL ISLAND MARKING

| TYPE OF MARKING | WIDTH OF LINE | PATTERN | COLOR | SPACING / REMARKS |
|---|--|------------------------------|---|--|
| CENTERLINE ON 2 LANE PAVEMENT | 4 (100) | SKIP-DASH | YELLOW | 10' (3 m) LINE WITH 30' (9 m) SPACE |
| CENTERLINE ON MULTI-LANE UNDIVIDED PAVEMENT | 2 @ 4 (100) | SOLID | YELLOW | 11 (280) C-C |
| NO PASSING ZONE LINES FOR ONE DIRECTION | 4 (100) | SOLID | YELLOW | 5 1/2 (140) C-C FROM SKIP-DASH CENTERLINE |
| NO PASSING ZONE LINES FOR BOTH DIRECTIONS | 2 @ 4 (100) | SOLID | YELLOW | 11 (280) C-C OMIT SKIP-DASH CENTERLINE BETWEEN |
| LANE LINES | 4 (100) 5 (125) ON FREEWAYS | SKIP-DASH SKIP-DASH | WHITE WHITE | 10' (3 m) LINE WITH 30' (9 m) SPACE |
| DOTTED LINES (EXTENSIONS OF CENTER, LANE OR TURN LANE MARKINGS) | SAME AS LINE BEING EXTENDED | SKIP-DASH | SAME AS LINE BEING EXTENDED | 2' (600) LINE WITH 6' (1.8 m) SPACE |
| EDGE LINES | 4 (100) | SOLID | YELLOW-LEFT WHITE-RIGHT | OUTLINE MOUNTABLE MEDIANS IN YELLOW; EDGE LINES ARE NOT USED NEXT TO BARRIER CURB |
| TURN LANE MARKINGS | 6 (150) LINE; FULL SIZE LETTERS & SYMBOLS (8' (2.4m)) | SOLID | WHITE | SEE TYPICAL TURN LANE MARKING DETAIL |
| TWO WAY LEFT TURN MARKING | 2 @ 4 (100) EACH DIRECTION 8' (2.4m) LEFT ARROW | SKIP-DASH AND SOLID IN PAIRS | YELLOW WHITE | 10' (3 m) LINE WITH 30' (9 m) SPACE FOR SKIP-DASH; 5 1/2 (140) C-C BETWEEN SOLID LINE AND SKIP-DASH LINE. SEE TYPICAL TWO-WAY LEFT TURN MARKING DETAIL |
| CROSSWALK LINES (PEDESTRIAN) A. DIAGONALS (BIKE & EQUESTRIAN) B. LONGITUDINAL BARS (SCHOOL) | 2 @ 6 (150) 12 (300) @ 45° 12 (300) @ 90° | SOLID SOLID SOLID | WHITE WHITE WHITE | NOT LESS THAN 6' (1.8 m) APART 2' (600) APART 2' (600) APART SEE TYPICAL CROSSWALK MARKING DETAILS. |
| STOP LINES | 24 (600) | SOLID | WHITE | PLACE 4' (1.2 m) IN ADVANCE OF AND PARALLEL TO CROSSWALK, IF PRESENT. OTHERWISE, PLACE AT DESIRED STOPPING POINT, PARALLEL TO CROSSROAD CENTERLINE, WHERE POSSIBLE |
| PAINTED MEDIANS | 2 @ 4 (100) WITH 12 (300) DIAGONALS @ 45° NO DIAGONALS USED FOR 4' (1.2 m) WIDE MEDIANS | SOLID | YELLOW; TWO WAY TRAFFIC WHITE; ONE WAY TRAFFIC | 11 (280) C-C FOR THE DOUBLE LINE. SEE TYPICAL PAINTED MEDIAN MARKING. |
| GORE MARKING AND CHANNELIZING LINES | 8 (200) WITH 12 (300) DIAGONALS @ 45° | SOLID | WHITE | DIAGONALS: 15' (4.5 m) C-C (LESS THAN 30MPH (50 km/h)) 20' (6 m) C-C 30MPH (50 km/h) TO 45MPH (70 km/h) 30' (9 m) C-C (OVER 45MPH (70 km/h)) |
| RAILROAD CROSSING | 24 (600) TRANSVERSE LINES; "RR" 15 6' (1.8 m) LETTERS; 16 (400) LINE FOR "X" | SOLID | WHITE | SEE STATE STANDARD 780001 AREA OF: "R"=3.6 SQ. FT. (0.33 m ²) EACH "X"=54.0 SQ. FT. (5.0 m ²) |
| SHOULDER DIAGONALS | 12 (300) @ 45° | SOLID | WHITE - RIGHT YELLOW - LEFT | 50' (15 m) C-C (LESS THAN 30MPH (50 km/h)) 75' (25 m) C-C (30 MPH (50 km/h) TO 45MPH (70 km/h)) 150' (45 m) C-C (OVER 45MPH (70 km/h)) |

FOR FURTHER DETAILS ON PAVEMENT MARKING REFER TO STANDARD SPECIFICATIONS FOR ROAD AND BRIDGE CONSTRUCTION AND STATE STANDARD 780001.

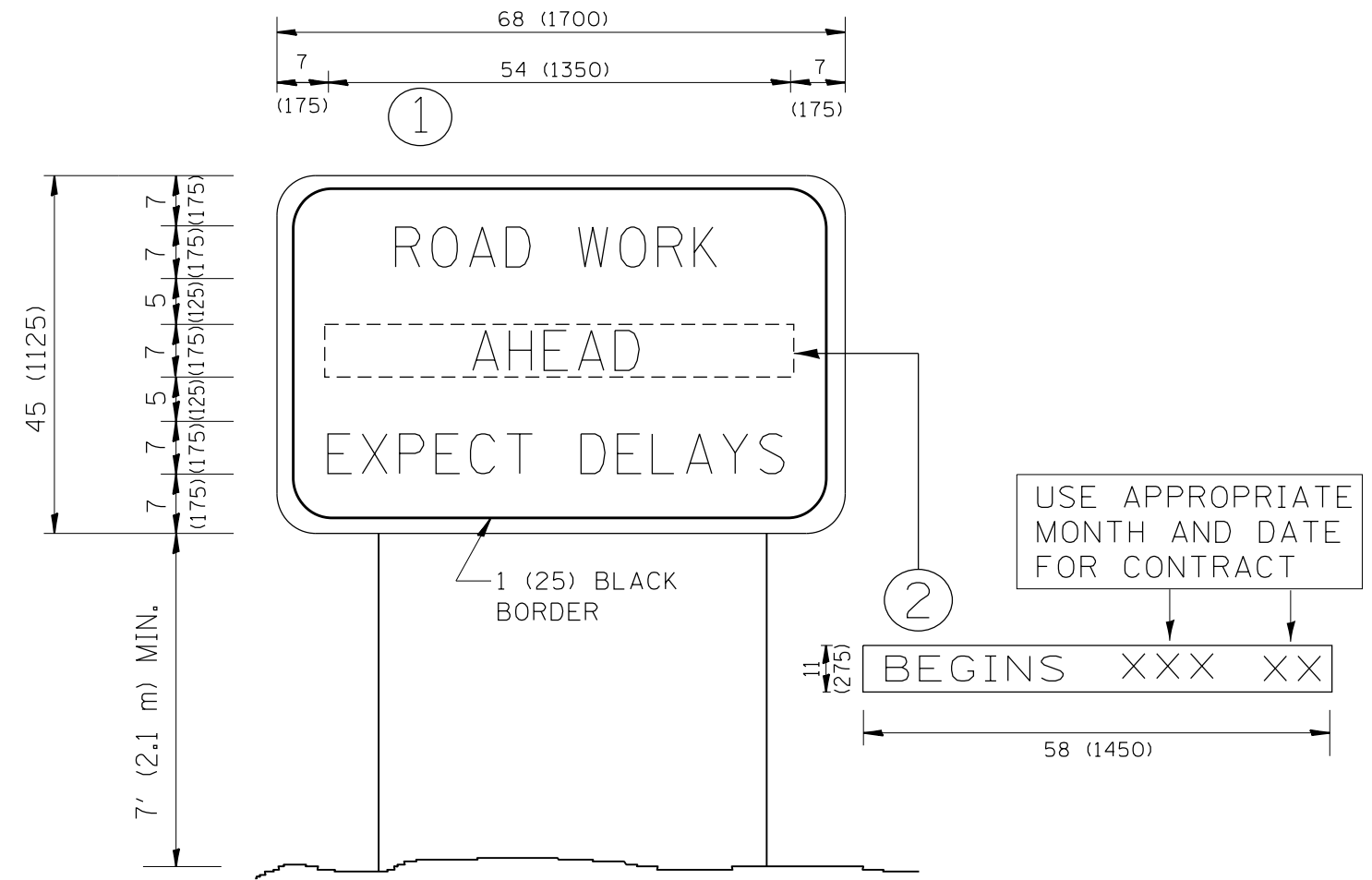
All dimensions are in inches (millimeters) unless otherwise shown.

| | | | |
|--|------------------------------|------------------|--------------------------------|
| FILE NAME = | USER NAME = abebawa | DESIGNED - EVERS | REVISED -T, RAMMACHER 10-27-94 |
| et:\pw_work\p1dot\abebawa\d0407110\119711-sht-plan.dgn | | DRAWN - | REVISED -C, JUCIUS 09-09-09 |
| | PLOT SCALE = 100.0000' / in. | CHECKED - | REVISED - |
| | PLOT DATE = 10/24/2014 | DATE - 03-19-90 | REVISED - |

STATE OF ILLINOIS DEPARTMENT OF TRANSPORTATION

| | | | |
|---------------------------|-------------------------|------|---------|
| DISTRICT ONE | | | |
| TYPICAL PAVEMENT MARKINGS | | | |
| SCALE: NONE | SHEET NO. 1 OF 1 SHEETS | STA. | TO STA. |

| | | | | |
|---|-----------|--------------------|--------------|-----------|
| F.A.P. RTE. | SECTION | COUNTY | TOTAL SHEETS | SHEET NO. |
| 557 | 128-B-1-1 | KANE | 20 | 19 |
| TC-13 | | CONTRACT NO. 60M91 | | |
| FED. ROAD DIST. NO. 1 ILLINOIS FED. AID PROJECT | | | | |



NOTES:

1. USE BLACK LETTERING ON ORANGE BACKGROUND.
2. ERECT SIGNS IN ADVANCE OF THE LOCATION FOR THE "ROAD CONSTRUCTION AHEAD" SIGN AT LOCATIONS AS DIRECTED BY THE ENGINEER.
3. ERECT SIGN ① WITH INSTALLED PANEL ② ONE WEEK PRIOR TO THE START OF CONSTRUCTION.
4. REMOVE PANEL ② SOON AFTER THE START OF CONSTRUCTION.
5. SEE SPECIAL PROVISION FOR "TEMPORARY INFORMATION SIGNING" FOR ADDITIONAL INFORMATION.
6. ONE SIGN ASSEMBLY EQUALS 25.70 SQ. FT. (2.3 SQ. M.)
7. SHALL BE PAID FOR AS TEMPORARY INFORMATION SIGNING.

ALL DIMENSIONS ARE IN INCHES (MILLIMETERS) UNLESS OTHERWISE SHOWN.

| | | | |
|---|------------------------------|------------|---------------------------------|
| FILE NAME = | USER NAME = abebawa | DESIGNED - | REVISED - R. MIRS 09-15-97 |
| et:\pw_work\pwidot\abebawa\d0407110\119711-sht-plan.dgn | | DRAWN - | REVISED - R. MIRS 12-11-97 |
| | PLOT SCALE = 100.0000' / in. | CHECKED - | REVISED - T. RAMMACHER 02-02-99 |
| | PLOT DATE = 10/24/2014 | DATE - | REVISED - C. JUCIUS 01-31-07 |

**STATE OF ILLINOIS
DEPARTMENT OF TRANSPORTATION**

**ARTERIAL ROAD
INFORMATION SIGN**

SCALE: NONE SHEET NO. 1 OF 1 SHEETS STA. TO STA.

| | | | | |
|---|-----------|--------|--------------------|-----------|
| F.A.P. RTE. | SECTION | COUNTY | TOTAL SHEETS | SHEET NO. |
| 557 | 128-B-1-1 | KANE | 20 | 20 |
| TC-22 | | | CONTRACT NO. 60M91 | |
| FED. ROAD DIST. NO. 1 ILLINOIS FED. AID PROJECT | | | | |