

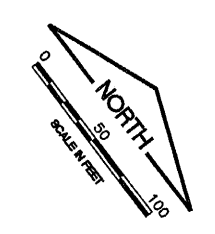
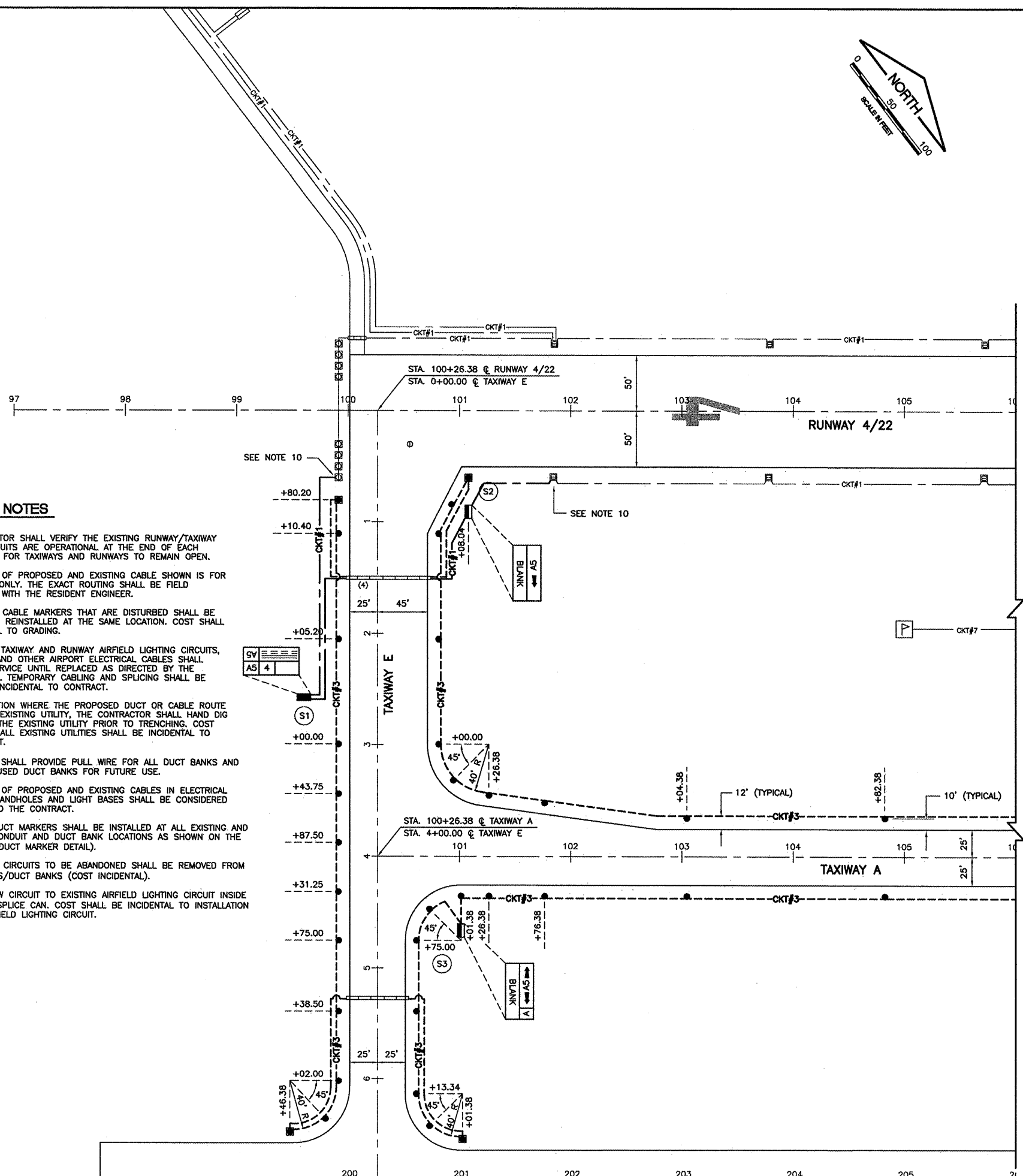
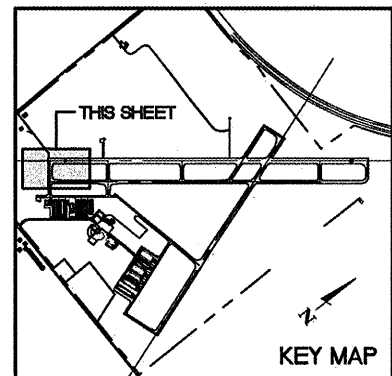
IMAGE FILES:

LEGEND

- ⊠ EXISTING BASE MOUNTED MEDIUM INTENSITY TAXIWAY LIGHT
- EXISTING STAKE MOUNTED MEDIUM INTENSITY TAXIWAY LIGHT
- ⊠ EXISTING STAKE MOUNTED MEDIUM INTENSITY RUNWAY LIGHT
- ⊠ EXISTING BASE MOUNTED MEDIUM INTENSITY RUNWAY LIGHT
- ⊙ EXISTING STAKE MOUNTED THRESHOLD LIGHT
- ⊠ EXISTING BASE MOUNTED THRESHOLD LIGHT
- (4) EXISTING CONCRETE ENCASED DUCT BANK (NUMBER OF WAYS)
- GRS EXISTING GRS CONDUIT (CONDUIT SIZE NOTED)
- ⊠_{HH} EXISTING ELECTRICAL HANDHOLE
- ⊙ EXISTING ELECTRICAL SPLICE CAN
- ⊠ EXISTING WIND CONE
- ⊠ EXISTING AIRFIELD GUIDANCE SIGN
- CKT#1 --- EXISTING RUNWAY 4/22 CIRCUIT
- CKT#2 --- EXISTING RUNWAY 16/34 CIRCUIT
- CKT#3 --- EXISTING TAXIWAY A, AA, C, D, E CIRCUIT
- CKT#4 --- EXISTING TAXIWAY B/BB CIRCUIT
- CKT#5 --- EXISTING TAXIWAY H CIRCUIT
- CKT#7 --- EXISTING WINDCONE/RUNWAY 4 PAPI
- CKT#8 --- EXISTING WINDCONE/RUNWAY 22 PAPI
- CKT#10 --- EXISTING RUNWAY 22 REIL
- CKT#11 --- EXISTING AWOS
- CKT#17 --- EXISTING RUNWAY 16 PAPI
- CKT#18 --- EXISTING RUNWAY 34 PAPI
- ⊙_E EXISTING ELECTRICAL MANHOLE
- □ □ □ EXISTING PRECISION APPROACH PATH INDICATORS (PAPI) L-880 SYSTEM
- △ EXISTING RUNWAY END IDENTIFIER LIGHT (REIL)
- NEW BASE MOUNTED RUNWAY LIGHT
- NEW STAKE MOUNTED RUNWAY LIGHT
- NEW STAKE MOUNTED MEDIUM INTENSITY TAXIWAY LIGHT
- NEW BASE MOUNTED MEDIUM INTENSITY TAXIWAY LIGHT
- NEW AIRFIELD GUIDANCE SIGN
- EXISTING AIRFIELD GUIDANCE SIGN TO BE MODIFIED
- RELOCATED AIRFIELD GUIDANCE SIGN
- ⊙ NEW SPLICE CAN
- (4) --- NEW GRS CONDUIT (SIZE NOTED)
- (4) NEW CONCRETE ENCASED DUCT BANK (NUMBER OF WAYS)
- CKT#1 --- NEW CIRCUIT #1, 1/C #8 5KV L-824 TYPE C CABLE IN 3/4" UNIT DUCT
- CKT#3 --- NEW CIRCUIT #3, 1/C #8 5KV L-824 TYPE C CABLE IN 3/4" UNIT DUCT

LIGHTING NOTES

1. THE CONTRACTOR SHALL VERIFY THE EXISTING RUNWAY/TAXIWAY LIGHTING CIRCUITS ARE OPERATIONAL AT THE END OF EACH WORKING DAY FOR TAXIWAYS AND RUNWAYS TO REMAIN OPEN.
2. THE ROUTING OF PROPOSED AND EXISTING CABLE SHOWN IS FOR INFORMATION ONLY. THE EXACT ROUTING SHALL BE FIELD COORDINATED WITH THE RESIDENT ENGINEER.
3. ANY EXISTING CABLE MARKERS THAT ARE DISTURBED SHALL BE REMOVED AND REINSTALLED AT THE SAME LOCATION. COST SHALL BE INCIDENTAL TO GRADING.
4. ALL EXISTING TAXIWAY AND RUNWAY AIRFIELD LIGHTING CIRCUITS, FAA CABLES AND OTHER AIRPORT ELECTRICAL CABLES SHALL REMAIN IN SERVICE UNTIL REPLACED AS DIRECTED BY THE ENGINEER. ALL TEMPORARY CABLING AND SPICING SHALL BE CONSIDERED INCIDENTAL TO CONTRACT.
5. AT ANY LOCATION WHERE THE PROPOSED DUCT OR CABLE ROUTE CROSSES AN EXISTING UTILITY, THE CONTRACTOR SHALL HAND DIG AND LOCATE THE EXISTING UTILITY PRIOR TO TRENCHING. COST OF LOCATING ALL EXISTING UTILITIES SHALL BE INCIDENTAL TO THE CONTRACT.
6. CONTRACTOR SHALL PROVIDE PULL WIRE FOR ALL DUCT BANKS AND CAP THE UNUSED DUCT BANKS FOR FUTURE USE.
7. ALL SPLICES OF PROPOSED AND EXISTING CABLES IN ELECTRICAL MANHOLES, HANDHOLES AND LIGHT BASES SHALL BE CONSIDERED INCIDENTAL TO THE CONTRACT.
8. PROPOSED DUCT MARKERS SHALL BE INSTALLED AT ALL EXISTING AND PROPOSED CONDUIT AND DUCT BANK LOCATIONS AS SHOWN ON THE PLANS (SEE DUCT MARKER DETAIL).
9. ALL EXISTING CIRCUITS TO BE ABANDONED SHALL BE REMOVED FROM ALL CONDUITS/DUCT BANKS (COST INCIDENTAL).
10. CONNECT NEW CIRCUIT TO EXISTING AIRFIELD LIGHTING CIRCUIT INSIDE LIGHT BASE/SPLICE CAN. COST SHALL BE INCIDENTAL TO INSTALLATION OF NEW AIRFIELD LIGHTING CIRCUIT.



KA038

R:\Kankakee\0807506 Lighting Ph.2\Draw\Sheets

FILE: Lighting-01.dwg

LAYOUT: Layout1

UPDATE BY: Jim Ohse

SURVEY BOOK #

DATE: Thursday, January 15, 2009 11:19:30 AM

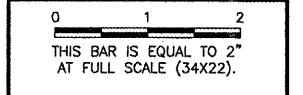
XREF DWG: tbcInt.dwg

tb.dwg

elec-base.dwg

REVISIONS

NUMBER	BY	DATE



GREATER KANKAKEE AIRPORT
KANKAKEE, ILLINOIS

REHABILITATE AIRFIELD LIGHTING SYSTEM -
RUNWAY 4/22 PARALLEL AND CONNECTING TAXIWAYS

AIRFIELD LIGHTING PLAN
STA. 100+00 TO STA. 106+00

© Copyright CMT, Inc.

CMT
CRANFORD, MURPHY & TILLY, INC.
CONSULTING ENGINEERS
License No. 184-000613

DESIGN BY:	MND
DRAWN BY:	JRO
CHECKED BY:	MND
APPROVED BY:	
DATE:	01/16/09
JOB No:	08075-06
IL PROJECT: IKK-3863	
A.I.P. PROJECT: 3-17-0057-B15	
FINAL SUBMITTAL	
SHEET 12 OF 20 SHEETS	