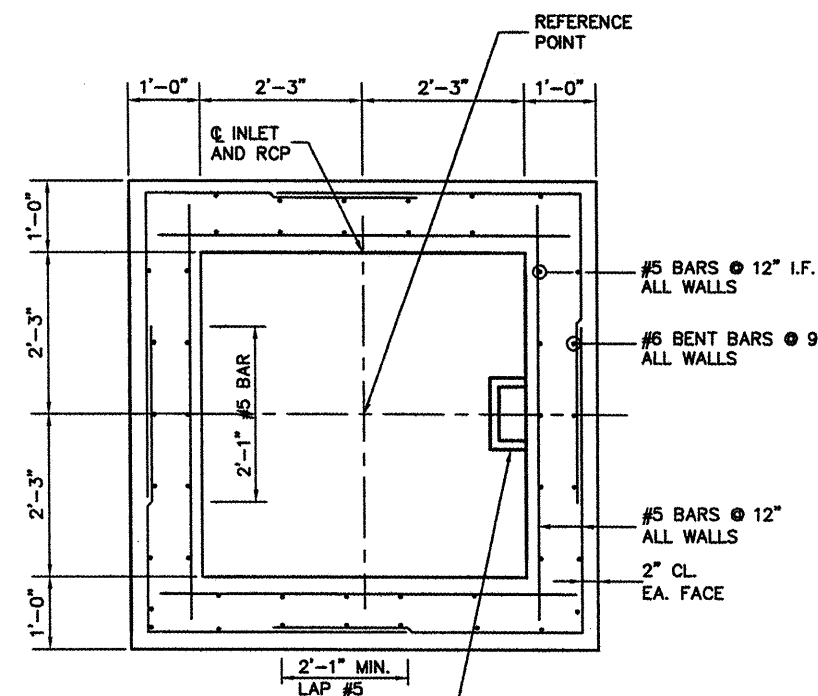
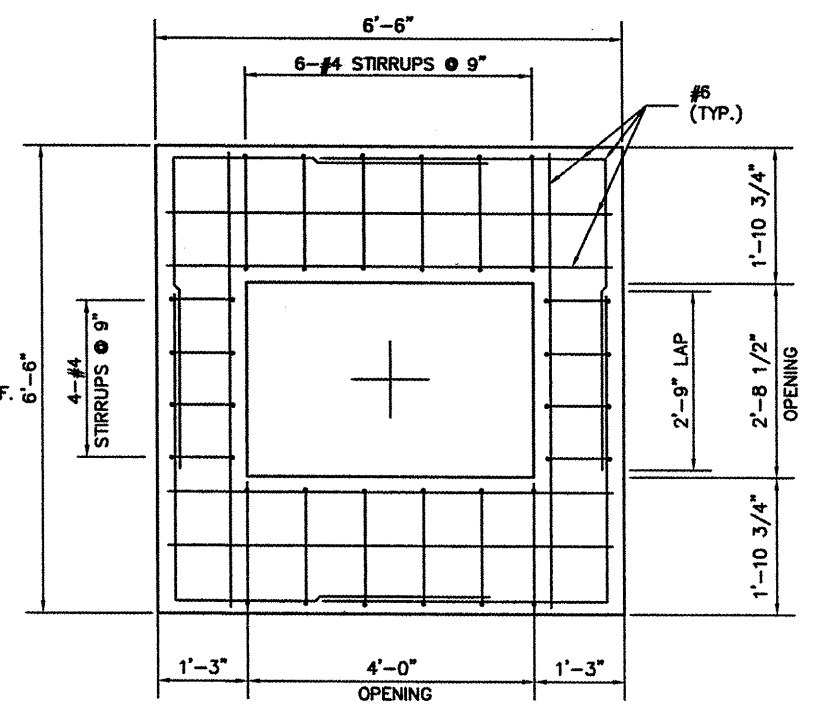


PLAN VIEW
 3/4" = 1'-0"



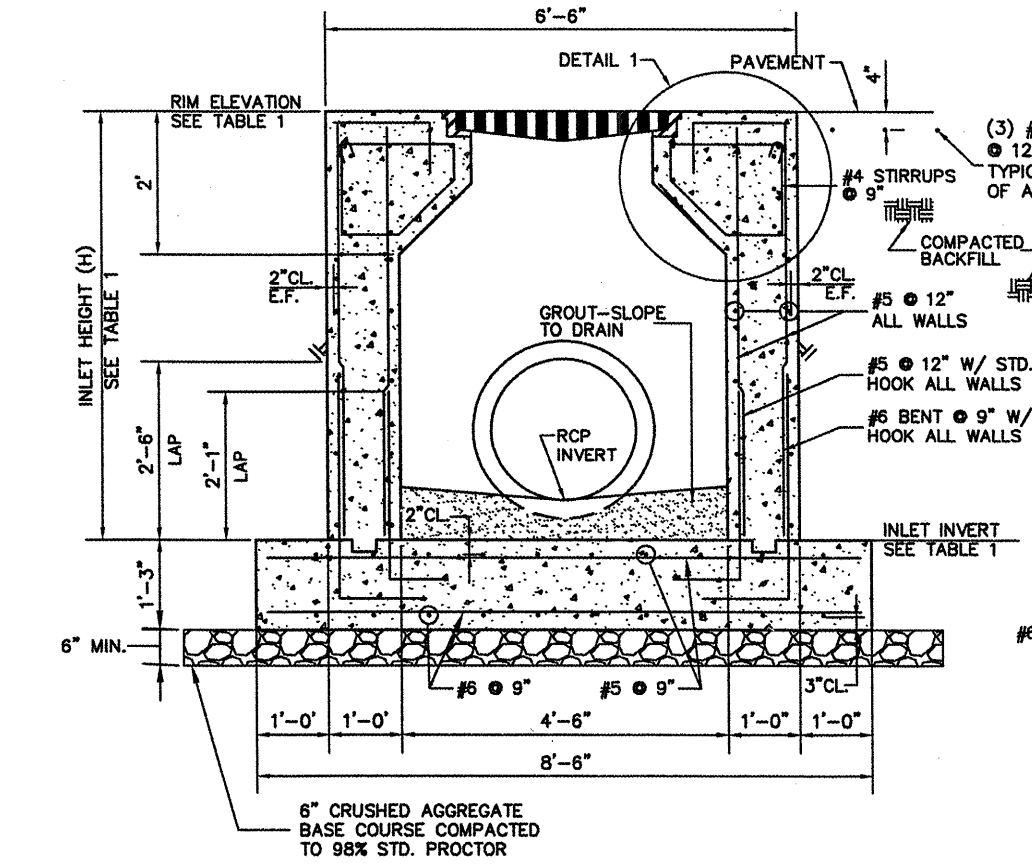
WALL REINFORCEMENT PLAN
 3/4" = 1'-0"



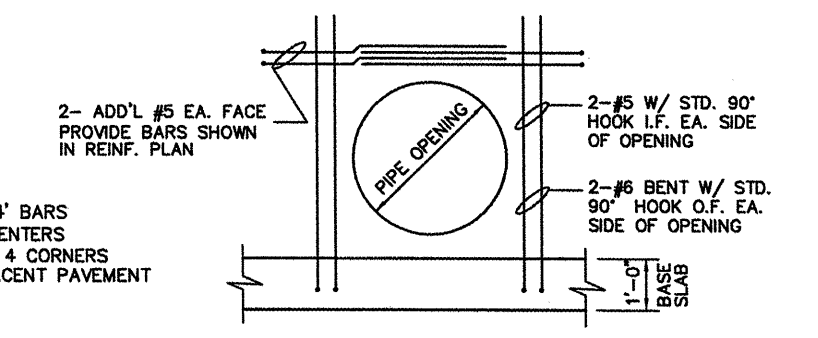
TOP REINFORCEMENT PLAN
 3/4" = 1'-0"

TABLE 1

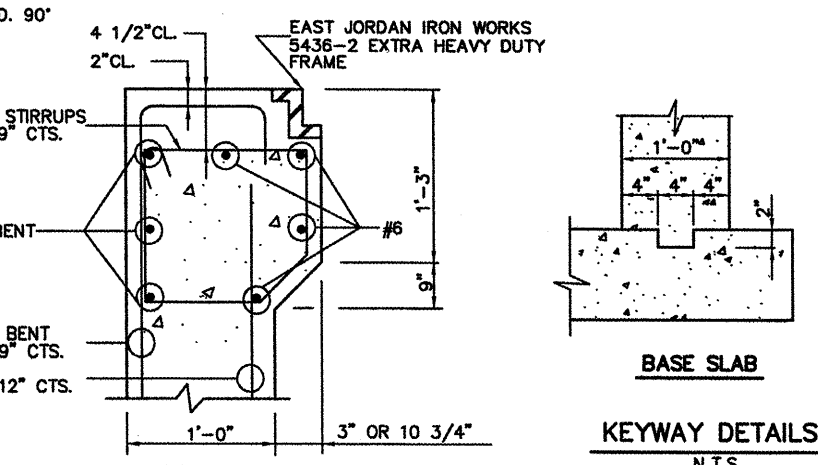
INLET	IN-2
REFERENCE POINT	1178+14.2
STA. & OFFSET	50' LT.
RIM ELEVATION	590.40
DIAMETER (SKEW)	
"A"	30" RCP (0)
"B"	30" RCP (9)
INVERT	584.08
INLET INVERT	583.58
INLET HEIGHT (H)	6'-10"



SECTION A
 3/4" = 1'-0"



ADDITIONAL REINFORCEMENT AROUND PIPE PENETRATIONS
 N.T.S.



KEYWAY DETAILS
 N.T.S.

DESIGN CRITERIA

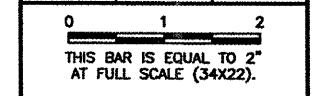
L.L. = BOEING AIRCRAFT 727-ADV200
 WATER TABLE AT TOP OF INLET
 NET ALLOWABLE SOIL BEARING PRESSURE = 2500 PSF

GENERAL NOTES

1. THE INLET GRATE SHALL BE SUPPORTED ON ALL FOUR SIDES.
2. ALL REINFORCEMENT BARS SHALL CONFORM TO ASTM A615 GRADE 60 AND SHALL BE CLEAN AND FREE OF GREASE, SCALING RUST AND OTHER FOREIGN MATERIALS.
3. INLET MAY BE CONSTRUCTED BY CAST-IN-PLACE CONCRETE OR PRECAST CONCRETE. PRECAST CONCRETE INLETS SHALL BE CONSTRUCTED TO THE LINES, DIMENSIONS AND DETAILS SHOWN ON THIS SHEET.
4. CAST-IN-PLACE CONCRETE AND PRECAST CONCRETE FOR THE INLETS SHALL HAVE A MINIMUM 14 DAYS COMPRESSIVE STRENGTH OF 3500 PSI.
5. THE CONTRACTOR SHALL VERIFY THE LOCATION AND SIZE OF PIPE OPENINGS WITH TABLE 1, THIS SHEET.
6. ALL FOOTING EXCAVATIONS SHALL BE CLEAN FREE OF DEBRIS, STANDING WATER AND LOOSE SOIL AND SHALL BE INSPECTED BY THE ENGINEER PRIOR TO THE PLACEMENT OF CONCRETE OR SUBBASE.
7. CONCRETE SHALL NOT BE PLACED OVER FROZEN OR MUDDY SOIL.
8. ADDITIONAL REINFORCEMENT FOR PIPE PENETRATIONS NOT REQUIRED FOR 4" DIA. PIPES OR LESS.

CA007

REVISIONS		
NUMBER	BY	DATE



SPRINGFIELD AIRPORT AUTHORITY
ABRAHAM LINCOLN CAPITAL AIRPORT
SPRINGFIELD, ILLINOIS

WIDEN TAXWAY G - PHASE 2

INLET - SPECIAL DETAIL

© Copyright CMT, Inc.
CMT
 CRANFORD MURPHY & TILLY, INC.
 CONSULTING ENGINEERS
 License No. BA-006918

DESIGN BY:	CBG
DRAWN BY:	CMT
CHECKED BY:	REN
APPROVED BY:	REN
DATE:	01/30/2009
JOB No:	07035-09-00
IL PROJ. NO.	SP1-3860
AIP PROJ. NO.	3-17-0096-xx
SHEET	35 OF 65 SHEETS