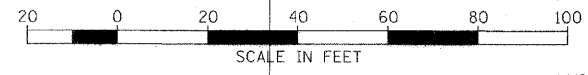


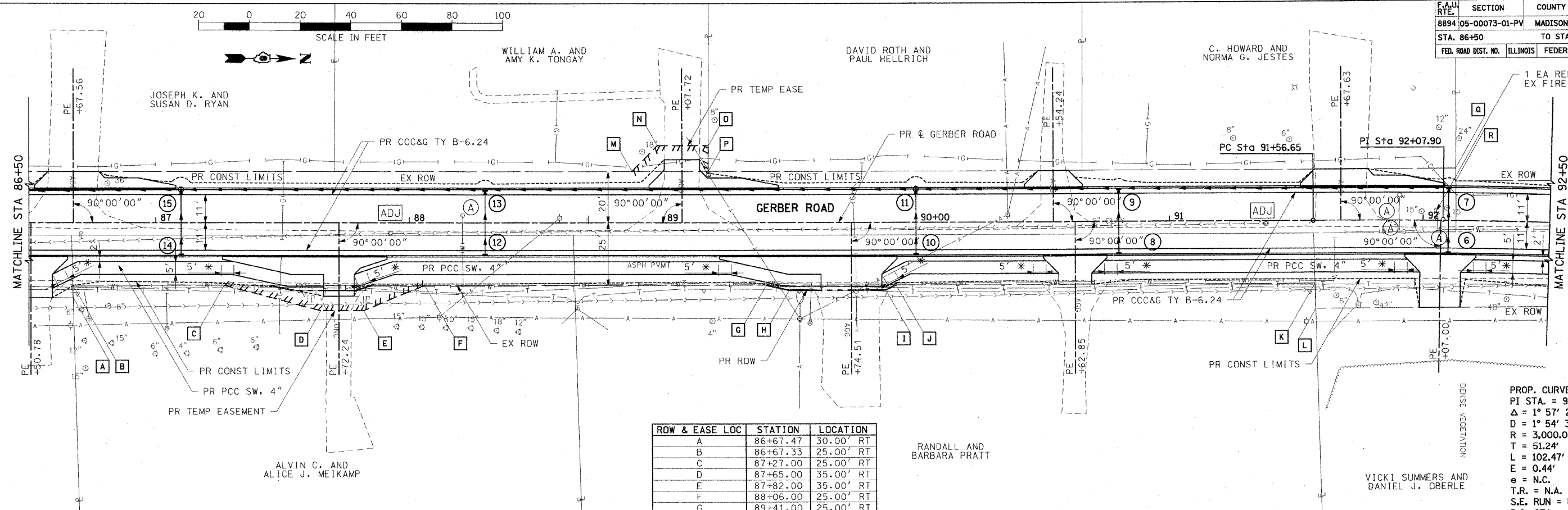
F.A.U. RTE.	SECTION	COUNTY	TOTAL SHEETS	SHEET NO.
8894 05-00073-01-PV		MADISON	68	14
STA. 86+50		TO STA. 92+50		
FED. ROAD DIST. NO.		ILLINOIS FEDERAL AID PROJECT		



PLAN	DATE

PROFILE	DATE

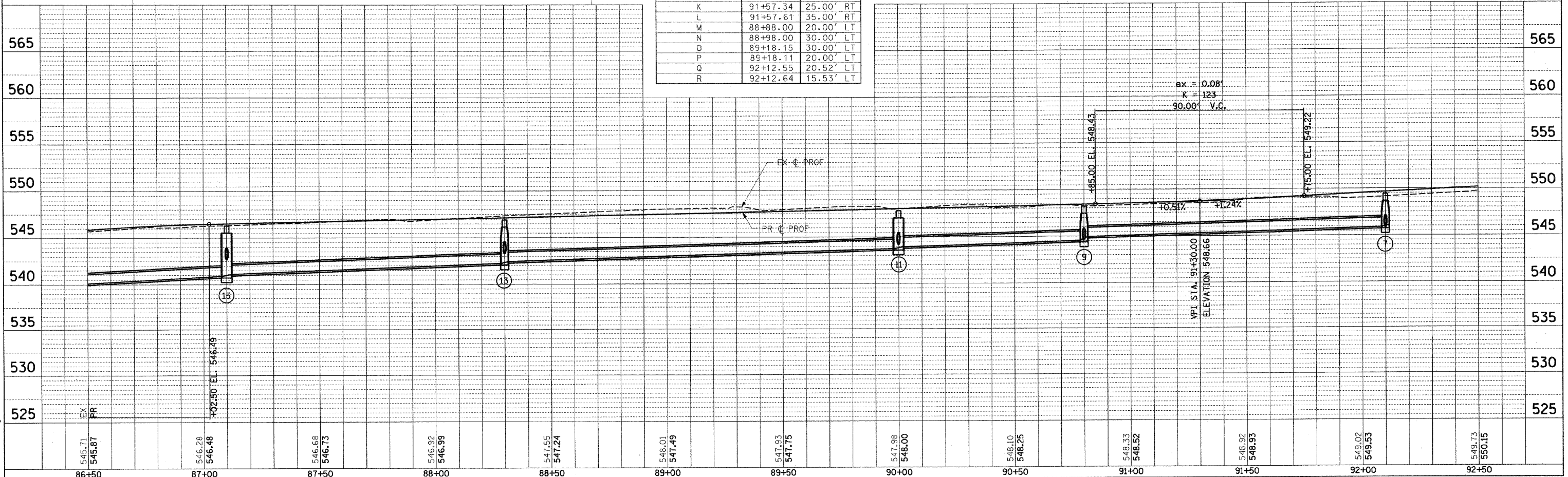
PLOT DATE = 12/29/2008
 FILE NAME = I:\vicki\cavilla\0746181\000a\view\814_PP-03.dgn
 PLOT SCALE = 20.0000' / IN.
 USER NAME = Runy Miller



ROW & EASE LOC	STATION	LOCATION
A	86+67.47	30.00' RT
B	86+67.33	25.00' RT
C	87+27.00	25.00' RT
D	87+65.00	35.00' RT
E	87+82.00	35.00' RT
F	88+06.00	25.00' RT
G	89+41.00	25.00' RT
H	89+50.00	27.00' RT
I	89+88.00	27.00' RT
J	89+92.00	25.00' RT
K	91+57.34	25.00' RT
L	91+57.61	35.00' RT
M	88+88.00	20.00' LT
N	88+98.00	30.00' LT
O	89+18.15	30.00' LT
P	89+18.11	20.00' LT
Q	92+12.55	20.52' LT
R	92+12.64	15.53' LT

* TRANSITION SIDEWALK SLOPE FROM 2% TOWARD THE BACK OF CURB TO A MAX OF 2% AWAY FROM THE BACK OF CURB IN 5' (SEE CROSS SECTIONS FOR SIDEWALK SLOPES)

PROP. CURVE GERBER
 PI STA. = 92+07.90
 $\Delta = 1^\circ 57' 26''$ (RT)
 $R = 3,000.00'$
 $T = 51.24'$
 $L = 102.47'$
 $E = 0.44'$
 $e = N.C.$
 $T.R. = N.A.$
 $S.E. RUN = N.A.$
 $P.C. STA = 91+56.65$
 $P.T. STA = 92+59.13$



PLAN & PROFILE: GERBER ROAD - STA 86+50.00 TO STA 92+50.00