

DOT LIASON: KEN PARK (309) 671-3333

CITY OF EAST PEORIA LIASON: STEVE FERGUSON (309) 698-4716

CONTRACT NO. 89457	
F.A.U. RTE.	SECTION
6713	06-00139-00-GE
COUNTY	TOTAL SHEETS
TAZEWELL	13
	SHEET NO.
	1

# PLAN FOR PROPOSED CAMP STREET FILL

FOR

## CITY OF EAST PEORIA

### PROJECT NO. HPP 0790 (014)

### JOB NO. C-94-034-07

### SECTION 06-00139-00-GE

### TAZEWELL COUNTY

#### DRAWING INDEX

SHEET #	DESCRIPTION
1	COVER SHEET
2	GENERAL NOTES
3	SCHEDULE OF QUANTITIES AND STATUS OF UTILITIES
4	TYPICAL SECTIONS CAMP AND HERITAGE STREET
5	OVERALL PLAN, CONTROL POINTS AND BENCHMARKS
6	EROSION CONTROL AND UTILITY PLAN
7	LAYOUT AND GRADING PLAN
8	PIEZOMETER, SETTLEMENT PLATFORM AND MSE WALL DETAILS
9	CROSS SECTIONS CAMP STREET STA. 139+00 TO STA. 141+50
10	CROSS SECTIONS CAMP STREET STA. 142+00 TO STA. 144+00
11	CROSS SECTIONS HERITAGE STREET STA. 48+00
12 - 13	SOIL BORING LOGS

#### LIST OF STANDARDS

000001-05	STANDARD SYMBOLS, ABBREVIATIONS AND PATTERNS
280001-04	TEMPORARY EROSION CONTROL SYSTEMS
602401-02	MANHOLE, TYPE A
602601-02	PRECAST REINFORCED CONCRETE FLAT SLAB TOP
602701-02	CAST IRON STEPS
604036-02	FRAME AND LIDS, TYPE 1
701006-03	OFF-ROAD OPERATIONS, 2L, 2W, 15' TO 24" FROM PAVEMENT EDGE
701501-05	URBAN LANE CLOSURE, 2L, 2W, UNDIVIDED
701901-01	TRAFFIC CONTROL DEVICES

#### SURVEY BOOK NOS.

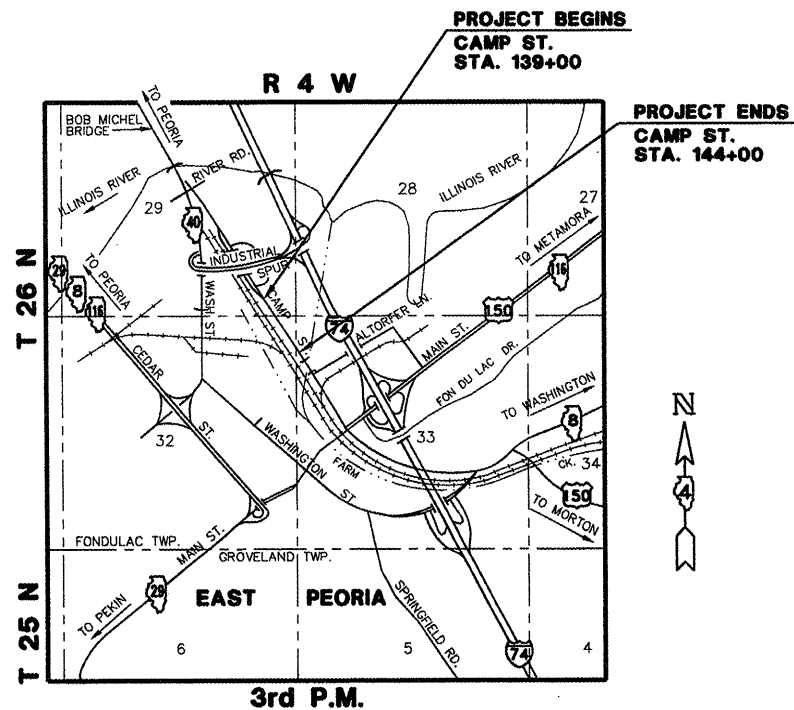
156A, 174, 282, 292, 308, 310, 316, 318, 319, 320



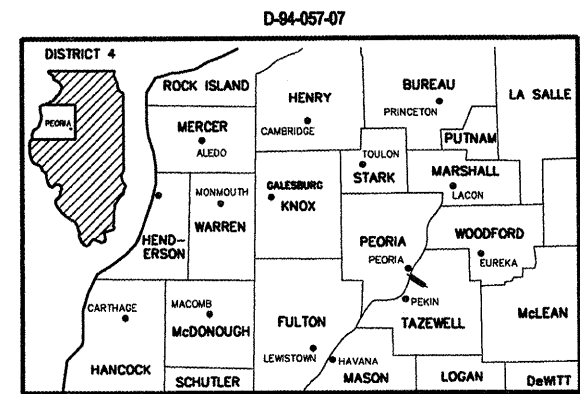
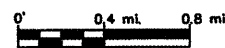
FULL SIZE PLANS HAVE BEEN PREPARED USING STANDARD ENGINEERING SCALES. REDUCED SIZED PLANS WILL NOT CONFORM TO STANDARD SCALES. IN MAKING MEASUREMENTS ON REDUCED PLANS, THE ABOVE SCALES MAY BE USED.

J.U.L.I.E.  
JOINT UTILITY LOCATION INFORMATION FOR EXCAVATION  
1-800-892-0123

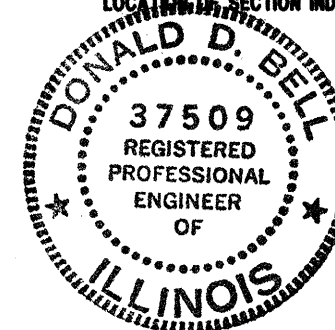
CONTRACT NO. 89457



LOCATION MAP



LOCATION OF SECTION INDICATED THIS: [shaded area]



*Donald D. Bell* 1-5-09  
DONALD D. BELL DATE

ILLINOIS REGISTERED PROFESSIONAL ENGINEER  
No. 082-037509

Expires 11-09

#### AGENCY RESPONSIBLE FOR LETTING

Approved JANUARY 5 20 09  
*Steve Ferguson* DIR. of Public Works  
Local Agency, Position

Passed 1-6 20 09  
*Don C. P. D.*  
District #4 Engineer of Local Roads & Streets

Releasing for Bid  
Based on Limited  
Review  
JAN 6 20 09  
*Joseph E. Brown*  
Deputy Director of Highways, Region #3 Engineer

PRINTED BY THE AUTHORITY  
OF THE STATE OF ILLINOIS

F.A.U. NO.	SECTION	COUNTY	TOTAL SHEETS	SHEET NO.
6713	06-00139-00-GE	TAZEWELL	13	2
STA. _____		TO STA. _____		
PROJECT: HPP 0790013		ILLINOIS CITY OF EAST PEORIA		

**GENERAL NOTES**

UTILITIES – LOCATIONS/INFORMATION ON PLANS

The locations of existing water mains, gas mains, sewers, electric power lines, telephone lines and other utilities as shown on the plans are based on careful field investigation and the best information available, but they are not guaranteed. Unless elevations are shown --- all utility locations shown on the cross sections are based on the approximate depth supplied by the utility company. It shall be the Contractor's responsibility to ascertain their exact location from the utility companies and by field inspection.

PLAN ELEVATIONS – U.S.G.S. MEAN SEA LEVEL DATUM

All elevations shown on the plans are established from U.S.G.S. mean sea level datum.

PROPERTY OWNER ACCESS REQUIREMENT

Access must be maintained to all existing properties during construction per Article 107.09 unless arrangements are made in writing by the Contractor with the property owners with a copy to the Engineer for short-term closures.

ENVIRONMENTAL REVIEWS

Prior to the use of any proposed borrow areas, use areas (temporary access roads, detours, run-arounds, etc.) and/or waste areas, the Contractor shall file the required environmental resource request surveys according to Section 107.22 of the Standard Specifications. These surveys are required in order for the Department to conduct cultural and biological resource surveys for the proposed site. Prior to any waste materials being removed from the construction site the required environmental resource surveys will need to be obtained and filed by the Contractor. Excess waste products removed from the construction site shall be disposed of as required in Section 202.03 of the Standard Specifications. Any protruding metal bars shall be removed prior to the disposal of broken concrete at approved disposal sites. The required environmental resource documentation shall include the following: – BDE Form 2289 (Environmental Survey Request) – A location map showing the size limits and location of the use area – Signed property owner agreement form (D4 PI0100) – Color photographs depicting the use area – Borrow Area Entry Agreement Form (D4 PI0101). Please note that a minimum of two weeks shall be allowed for the District to obtain the required environmental clearances.

ORDERING LENGTH CONFIRMATION – DRAINAGE ITEMS

The Contractor shall consult with the Engineer in regard to the exact length of the box/pipe culverts, storm sewers, and/or pipe drains required prior to ordering these items.

EXISTING DRAINAGE PIPES CONNECTED TO NEW STRUCTURES

In accordance with Section 602 of the Standard Specifications, the connecting of existing drain tiles, pipe culverts, or storm sewers to the proposed drainage system structures will not be paid for separately but shall be considered as included in the pay items provided.

EXISTING DRAINAGE PIPES TO BE SALVAGED

Existing storm sewer removed by the Contractor shall become the property of the Contractor.

ENGINEER'S FIELD OFFICE

Add the following sentence to the end of paragraph 670.02 (i) and 670.04 (e): All of the telephone lines provided shall have unpublished numbers.

SUMMARY OF QUANTITIES			
CODE NO.	PAY ITEM	UNIT	TOTAL QUANTITY
25000400	NITROGEN FERTILIZER NUTRIENT	POUND	270
25000500	PHOSPHORUS FERTILIZER NUTRIENT	POUND	270
25000600	POTASSIUM FERTILIZER NUTRIENT	POUND	270
20200100	EARTH EXCAVATION	CU YD	356
20400800	FURNISHED EXCAVATION	CU YD	12484
25000115	SEEDING, CLASS 1B	ACRE	1.5
25100630	EROSION CONTROL BLANKET	SQ YD	6566
28000250	TEMPORARY EROSION CONTROL SEEDING	POUND	300
28000300	TEMPORARY DITCH CHECKS	EACH	7
28000400	PERIMETER EROSION BARRIER	FOOT	801
28000500	INLET AND PIPE PROTECTION	EACH	1
25100105	MULCH, METHOD 1	ACRE	3
50200100	STRUCTURE EXCAVATION	CU YD	309
54202965	PIPE CULVERTS, TYPE 4 RCCP 30"	FOOT	124
55101200	STORM SEWER REMOVAL, 24"	FOOT	4
55101400	STORM SEWER REMOVAL, 30"	FOOT	124
60221000	MANHOLES, TYPE A, 5'-DIAMETER, TYPE 1 FRAME, OPEN LID	EACH	1
67000500	ENGINEER'S FIELD OFFICE, TYPE B	CAL MO	4
67100100	MOBILIZATION	L SUM	1
70101700	TRAFFIC CONTROL AND PROTECTION	L SUM	1
X0323149	TEMPORARY MECHANICALLY STABILIZED EARTH RETAINING WALL	SQ FT	6881
Z0013798	CONSTRUCTION LAYOUT	L Sum	1
Z0040000	PIEZOMETERS	EACH	6
Z0065100	SETTLEMENT PLATFORMS	EACH	4

PLT DATE \* \$DATE\*  
 FILE NAME \* \$FILE\*  
 PLOT SCALE \* \$SCALE\*  
 USER NAME \* \$USER\*



REVISIONS	
NAME	DATE

ILLINOIS DEPARTMENT OF TRANSPORTATION  
**CAMP STREET FILL**

**GENERAL NOTES  
 AND  
 SUMMARY OF QUANTITIES**

SCALE: \_\_\_\_\_ DRAWN BY: MLB/MEW  
 DATE: 1-5-2009 CHECKED BY: DDB

F.A.U. RTE.	SECTION	COUNTY	TOTAL SHEETS	SHEET NO.
6713	06-00139-00-GE	TAZEWELL	13	3
STA. _____		TO STA. _____		
PROJECT: HPP 0750013 ILLINOIS CITY OF EAST PEORIA				

STATUS OF UTILITIES					
STATION	OFFSET	OWNER	TYPE OF UTILITY	TYPE OF CONFLICT	DISPOSITION
139+00 TO 144+00	LT.	AMEREN CILCO	GAS	PROXIMITY	CAUTION
139+00 TO 144+00	LT.	AT&T	FIBER OPTIC	PROXIMITY	CAUTION
140+60	21' LT.	AMEREN CILCO	OVERHEAD ELECTRIC	PROXIMITY	CAUTION
139+00 TO 144+00	LT.	CITY OF E. PEORIA	STORM SEWER	PROXIMITY	CAUTION
142+50	LT. & RT.	CITY OF E. PEORIA	STORM SEWER	UNDER FILL	REPLACE

EROSION CONTROL SCHEDULE			
LOCATION	28000300		28000400
	TEMPORARY DITCH CHECK		PERIMETER
	EACH		EROSION BARRIER
	LEFT	RIGHT	FOOT
STA. 139+01.75		1	
STA. 139+45.50	1		
STA. 140+07.80		1	
STA. 141+51.51	1		
STA. 143+62.28	1		
STA. 143+90.60		1	
STA. 144+27.25		1	
STA. 138+80 TO 144+17			801
<b>SUBTOTAL</b>	3	4	
<b>TOTAL</b>	7		801

MOBILIZATION SCHEDULE	
	67100100
	MOBILIZATION
	L SUM
	1
<b>TOTAL</b>	1

SUMMARY OF EARTHWORK SCHEDULE					
LOCATION STATION TO STATION	LENGTH	20200100	FOR INFORMATION ONLY		20400800
		EARTH EXCAVATION	EARTH EXCAVATION ADJUSTED FOR SHRINKAGE	EMBANKMENT VOLUME	EARTHWORK BALANCE WASTE (+) OR SHORTAGE (-)
		CU YD	CU YD	CU YD	CU YD
STA. 138+85 TO STA. 144+20	535 FT	356	267	12751	-12484
<b>TOTAL</b>		360	270	12755	-12484

NOTE: A SHRINKAGE FACTOR OF 25% WAS USED TO CALCULATE QUANTITIES OF WASTE MATERIAL

DRAINAGE SCHEDULE		
LOCATION	28000500	60221000
	INLET AND PIPE PROTECTION	MANHOLE, TY A, 5' DIA. T1F & LID
	EACH	EACH
STA. 144+20.56, 18.96' LT.	1	1
<b>TOTAL</b>	1	1

ENGINEER'S FIELD OFFICE, TYPE B SCHEDULE	
	67000500
	ENGINEER'S FIELD OFFICE, TYPE B
	CAL MO
	4
<b>TOTAL</b>	4

TEMPORARY MECHANICALLY STABILIZED EARTH WALL / STRUCTURE EXCAVATION SCHEDULE					
LOCATION STATION TO STATION	LENGTH	50200100	FOR INFORMATION ONLY		X0323149
		STRUCTURE EXCAVATION	AVERAGE HEIGHT OF TEMPORARY MECHANICALLY STABILIZED EARTH WALL	TEMPORARY MECHANICALLY STABILIZED EARTH WALL	
		FEET	FEET	SQ FT	
ALONG CAMP STREET					
STA. 138+85 TO STA. 144+20	535	276	11.70	6241	
ACROSS HERITAGE STREET					
STA. 141+50 TO STA. 142+50	100	33	6.40	640	
<b>TOTAL</b>		309		6881	

PIPE SCHEDULE			
LOCATION	54202965	55101200	55101400
	PIPE CULVERTS, TY 4 RCCP, 30"	STORM SEWER REM, 24"	STORM SEWER REM, 30"
	FOOT	FOOT	FOOT
STA. 142+53.4, 18' LT. TO 106' RT.	124		124
STA. 144+20.56, 18.96' LT.		4	
<b>TOTAL</b>	124	4	124

CONSTRUCTION LAYOUT	
	Z0013798
	CONSTRUCTION LAYOUT
	EACH
	1
<b>TOTAL</b>	1

SEEDING SCHEDULE							
LOCATION STATION TO STATION	NITROGEN FERTILIZER NUTRIENT	PHOSPHORUS FERTILIZER NUTRIENT	POTASSIUM FERTILIZER NUTRIENT	25000115	25100630	28000250	28000700
	POUND	POUND	POUND	SEEDING, CLASS 1B	EROSION CONTROL BLANKET	TEMPORARY EROSION CONTROL SEEDING	MULCH, METHOD 1
	POUND	POUND	POUND	ACRE	SQ YD	POUND	ACRE
STA. 138+80 TO STA. 144+40	270	270	270	1.5	6566.06	300	3
<b>TOTAL</b>	270	270	270	1.5	6566	300	3

TRAFFIC CONTROL SCHEDULE	
	70101700
	TRAFFIC CONTROL AND PROTECTION
	L SUM
	1
<b>TOTAL</b>	1

PLOT DATE = #DATE#  
FILE NAME = #FILE#  
PLOT SCALE = #SCALE#  
USER NAME = #USER#

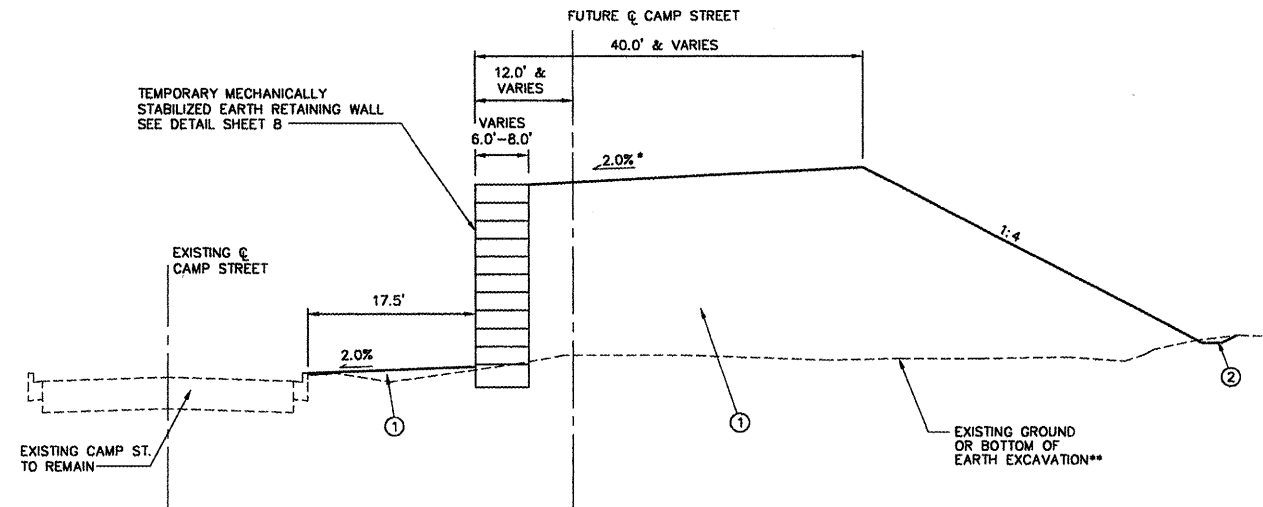


REVISIONS	
NAME	DATE

ILLINOIS DEPARTMENT OF TRANSPORTATION  
**CAMP STREET FILL**  
**SCHEDULE OF QUANTITIES AND STATUS OF UTILITIES**  
SCALE: \_\_\_\_\_ DATE: 1-5-2009  
DRAWN BY: MLB/MEW  
CHECKED BY: DDB

CONTRACT NO. 89457

F.A.M. RTE.	SECTION	COUNTY	TOTAL SHEETS	SHEET NO.
6713	06-00139-00-06	TAZEWELL	13	4
STA. _____		TO STA. _____		
PROJECT: HPP 0750013		ILLINOIS CITY OF EAST PEORIA		



**PROPOSED TYPICAL SECTION - CAMP STREET**

SCALE: N.T.S.

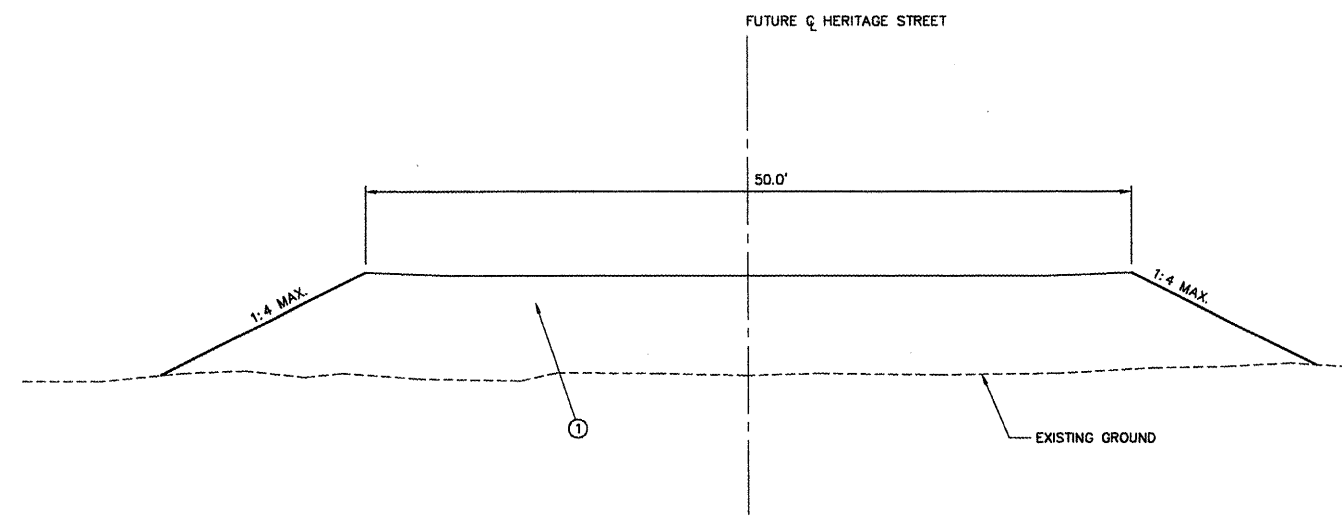
SEE CROSS SECTIONS AND DETAIL SHEETS FOR MORE INFORMATION  
SEE LAYOUT AND GRADING SHEETS FOR MORE INFORMATION

\* SEE LAYOUT AND GRADING PLANS AT INTERSECTION STATION 141+50 TO 143+00

\*\* EARTH EXCAVATION REQUIRED AT STA. 141+00 TO 143+00 - SEE CROSS SECTIONS FOR ADDITIONAL INFORMATION

**LEGEND**

- ① FURNISHED EXCAVATION
- ② EARTH EXCAVATION



**PROPOSED TYPICAL SECTION - HERITAGE STREET**

SCALE: N.T.S.

SEE CROSS SECTIONS AND DETAIL SHEETS FOR MORE INFORMATION

**LEGEND**

- ① FURNISHED EXCAVATION

PLOT DATE = 04/27/09  
 PLOT SCALE = AS SHOWN  
 USER NAME = MUSER



REVISIONS	
NAME	DATE

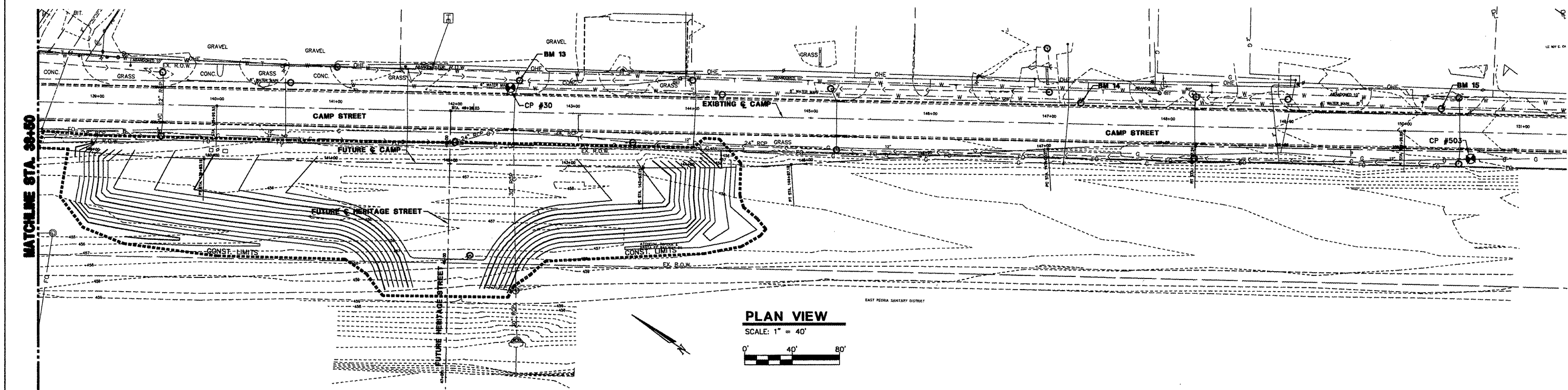
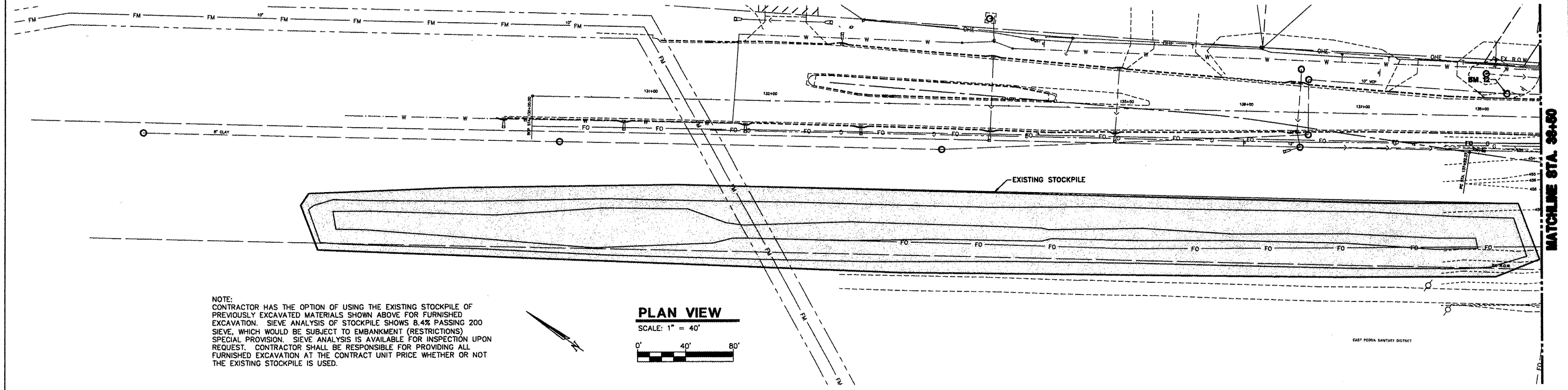
ILLINOIS DEPARTMENT OF TRANSPORTATION  
**CAMP STREET FILL**

**TYPICAL SECTIONS  
CAMP STREET AND  
HERITAGE STREET**

SCALE: \_\_\_\_\_  
DATE: 1-5-2009

DRAWN BY: MLB/MEW  
CHECKED BY: DOB

CONTRACT NO. 89457				
F.A.U. RTE.	SECTION	COUNTY	TOTAL SHEETS	SHEET NO.
6713	06-00139-00-GE	TAZENELL	13	5
STA. _____		TO STA. _____		
PROJECT: HPP 0790013 ILLINOIS CITY OF EAST PEORIA				



**BENCHMARKS**

BENCHMARK	DESCRIPTION	ELEVATION	STATION	OFFSET
BM 12	CHISELED "X" ON SANITARY MANHOLE NORTH OF UPS ENTRANCE	454.86	138+21.17	LT. 19.18'
BM 13	CHISELED "X" STORM SEWER MANHOLE NORTH OF CULLINAN FIELD OFFICE ENTRANCE	453.23	142+53.93	LT. 26.75'
BM 14	CHISELED "X" SANITARY SEWER MANHOLE IN CONCRETE DRIVEWAY	454.67	147+26.32	LT. 17.60'
BM 15	CHISELED "X" ON SANITARY MANHOLE LID NORTH OF NORTHMOST FAMILY FURNITURE ENTRANCE	456.18	150+30.11	LT. 19.30'

**CONTROL POINTS**

CP #20	CP #30	CP #503
N 11477.70 E 9248.64	N 11724.89 E 9494.62	N 11027.44 E 9907.05

REVISIONS	
NAME	DATE

ILLINOIS DEPARTMENT OF TRANSPORTATION  
**CAMP STREET FILL**  
**OVERALL PLAN, CONTROL POINTS AND BENCHMARKS**

SCALE: 1" = 40'  
DATE: 1-5-2009

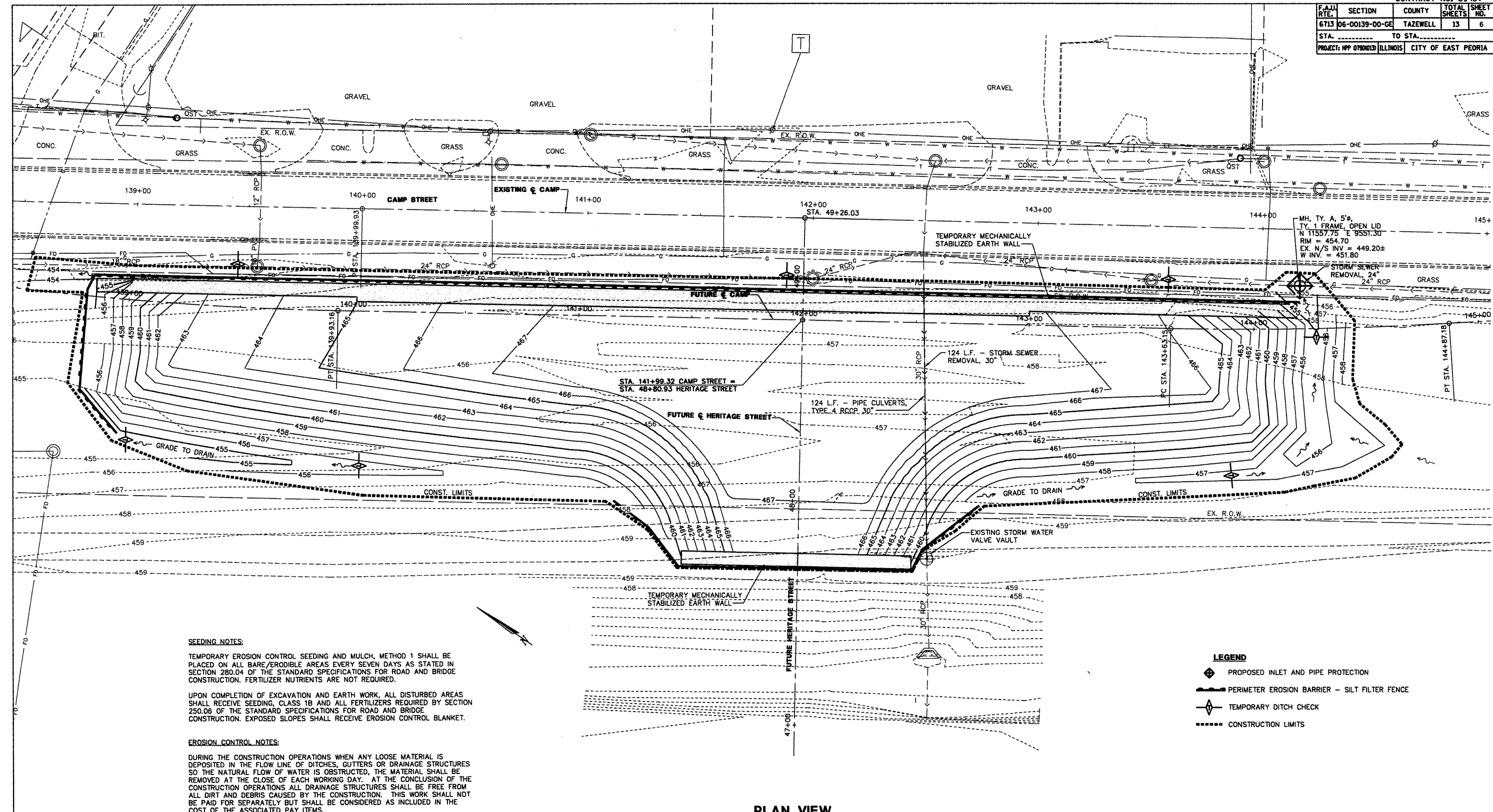
DRAWN BY: MLB/MEW  
CHECKED BY: DOB



PLOT DATE = #DATES\*  
FILE NAME = #FILE#\*  
PLOT SCALE = #SCALE#\*  
USER NAME = #USER#

CONTRACT NO. 89457

F.A.I. RTE.	SECTION	COUNTY	TOTAL SHEETS	SHEET NO.
6713	06-00139-00-GE	TAZEWELL	13	6
STA. _____ TO STA. _____		PROJECT: HPP 0700013 ILLINOIS CITY OF EAST PEORIA		

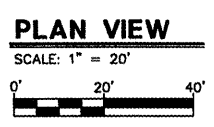


**SEEDING NOTES:**  
 TEMPORARY EROSION CONTROL SEEDING AND MULCH, METHOD 1 SHALL BE PLACED ON ALL BARE/ERODIBLE AREAS EVERY SEVEN DAYS AS STATED IN SECTION 280.04 OF THE STANDARD SPECIFICATIONS FOR ROAD AND BRIDGE CONSTRUCTION. FERTILIZER NUTRIENTS ARE NOT REQUIRED.

UPON COMPLETION OF EXCAVATION AND EARTH WORK, ALL DISTURBED AREAS SHALL RECEIVE SEEDING, CLASS 1B AND ALL FERTILIZERS REQUIRED BY SECTION 250.06 OF THE STANDARD SPECIFICATIONS FOR ROAD AND BRIDGE CONSTRUCTION. EXPOSED SLOPES SHALL RECEIVE EROSION CONTROL BLANKET.

**EROSION CONTROL NOTES:**  
 DURING THE CONSTRUCTION OPERATIONS WHEN ANY LOOSE MATERIAL IS DEPOSITED IN THE FLOW LINE OF DITCHES, GUTTERS OR DRAINAGE STRUCTURES SO THE NATURAL FLOW OF WATER IS OBSTRUCTED, THE MATERIAL SHALL BE REMOVED AT THE CLOSE OF EACH WORKING DAY. AT THE CONCLUSION OF THE CONSTRUCTION OPERATIONS ALL DRAINAGE STRUCTURES SHALL BE FREE FROM ALL DIRT AND DEBRIS CAUSED BY THE CONSTRUCTION. THIS WORK SHALL NOT BE PAID FOR SEPARATELY BUT SHALL BE CONSIDERED AS INCLUDED IN THE COST OF THE ASSOCIATED PAY ITEMS.

REFER TO THE STORM WATER POLLUTION PREVENTION PLAN FOR ADDITIONAL INFORMATION AND REQUIREMENTS.



- LEGEND**
- PROPOSED INLET AND PIPE PROTECTION
  - PERIMETER EROSION BARRIER - SILT FILTER FENCE
  - TEMPORARY DITCH CHECK
  - CONSTRUCTION LIMITS

REVISIONS	
NAME	DATE

ILLINOIS DEPARTMENT OF TRANSPORTATION  
**CAMP STREET FILL**  
**EROSION CONTROL AND UTILITY PLAN**

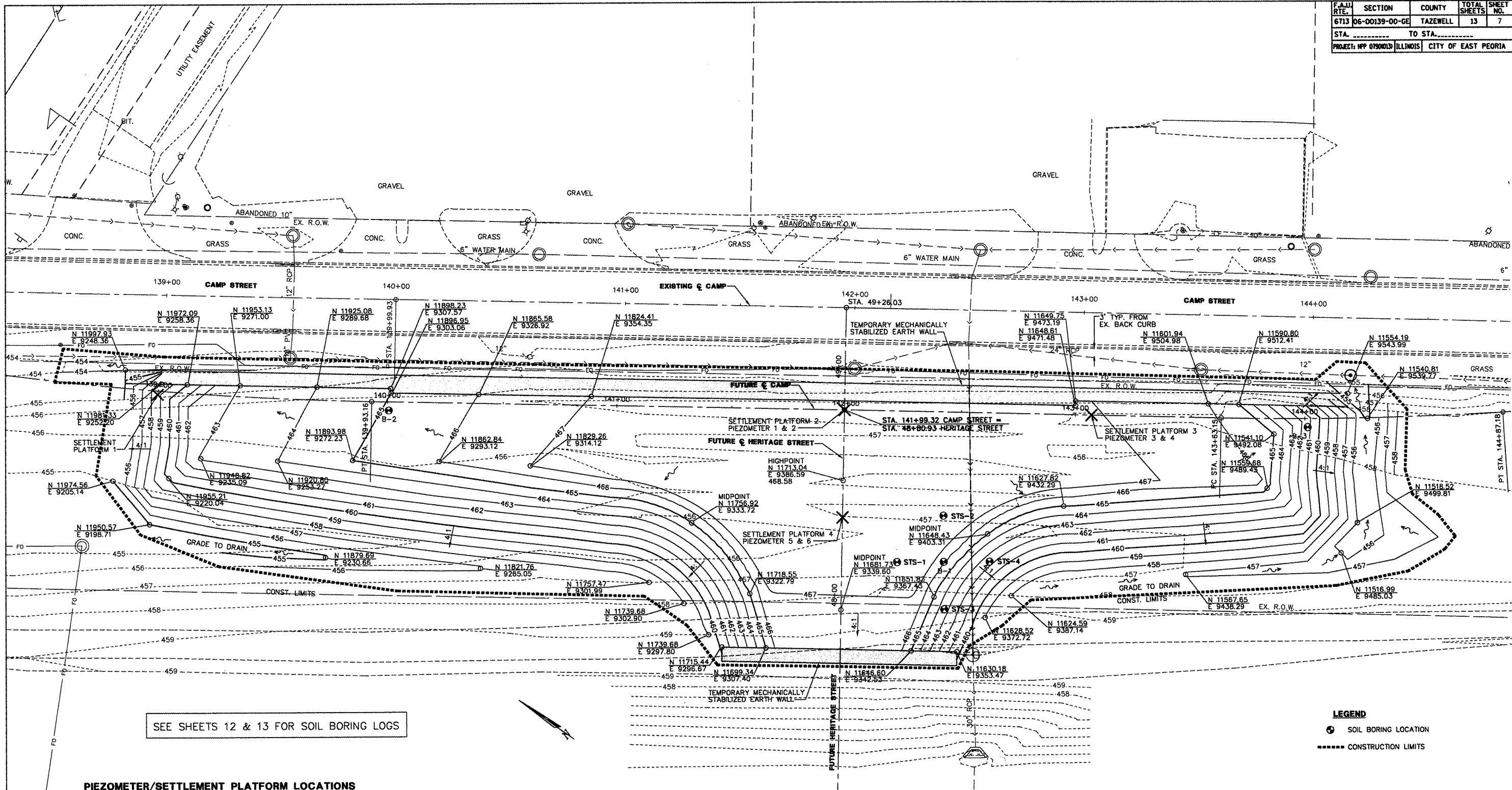
SCALE: 1" = 20'  
 DATE: 1-5-2009

DRAWN BY: MLB/MEW  
 CHECKED BY: DOB

**STS CONSULTANTS**  
 111 NE Jefferson Ave.  
 Peoria, Illinois 61602  
 PH: (309) 678-8484  
 FAX: (309) 678-5445  
 IL Design Firm Reg. No. 184-001518

DATE: 1-5-2009  
 FILE NAME: 06-00139-00-GE  
 PLOT SCALE: 1" = 20'  
 USER NAME: USER

F.A.U. RTE.	SECTION	COUNTY	TOTAL SHEETS	SHEET NO.
6713	06-00139-00-0E	TAZEWELL	13	7
STA. _____		TO STA. _____		
PROJECT: HFP 0790013 ILLINOIS CITY OF EAST PEORIA				



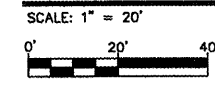
SEE SHEETS 12 & 13 FOR SOIL BORING LOGS

**PIEZOMETER/SETTLEMENT PLATFORM LOCATIONS**

<b>SETTLEMENT PLATFORM 1</b> N 11704.06 E 9373.14	<b>SETTLEMENT PLATFORM 3 AND PIEZOMETER 3 &amp; 4</b> N 11640.56 E 9472.10
<b>SETTLEMENT PLATFORM 2 AND PIEZOMETER 1 &amp; 2</b> N 11730.13 E 9412.32	<b>SETTLEMENT PLATFORM 4 AND PIEZOMETER 5 &amp; 6</b> N 11704.06 E 9373.14

- NOTES:**
1. AT STATIONS 139+59 AND 142+59 ALONG FUTURE CENTERLINE CAMP STREET, DETAIL TEMPORARY MSE WALL TO PROVIDE FOR FUTURE EXCAVATION OF 18" STORM SEWER GOING THROUGH WALL AT RIGHT ANGLES.
  2. THE TEMPORARY MECHANICALLY STABILIZED EARTH WALL WILL NOT BE REMOVED, IT WILL REMAIN IN PLACE AND BECOME THE PROPERTY OF THE OWNER.

**PLAN VIEW**



**LEGEND**

	SOIL BORING LOCATION
	CONSTRUCTION LIMITS

REVISIONS	
NAME	DATE

ILLINOIS DEPARTMENT OF TRANSPORTATION  
**CAMP STREET FILL**

**LAYOUT AND GRADING PLAN**

SCALE: 1" = 20'  
DATE: 1-5-2009

DRAWN BY: MLB/MEW  
CHECKED BY: DDB

**STS CONSULTANTS**  
111 NE Jefferson Ave.  
Peoria, Illinois 61602  
Ph: (309) 676-8464  
Fax: (309) 676-5445  
IL Design Firm Reg. No. 184-001518

DATE: 1-5-2009  
DRAWN BY: MLB/MEW  
CHECKED BY: DDB  
SCALE: 1" = 20'  
PROJECT: HFP 0790013  
SHEET: 7 OF 13





F.A.U. RTE.	SECTION	COUNTY	TOTAL SHEETS	SHEET NO.
6713	06-00139-00-GE	TAZEWELL	13	9

STA. \_\_\_\_\_ TO STA. \_\_\_\_\_  
PROJECT: HPP 0790013 ILLINOIS CITY OF EAST PEORIA

NOTE:  
THE LOCATIONS OF EXISTING WATER MAINS, GAS MAINS, SEWERS, ELECTRIC POWER LINES, TELEPHONE LINES AND OTHER UTILITIES AS SHOWN ON THE PLANS ARE BASED ON CAREFUL FIELD INVESTIGATION AND THE BEST INFORMATION AVAILABLE, BUT THEY ARE NOT GUARANTEED. UNLESS ELEVATIONS ARE SHOWN --- ALL UTILITY LOCATIONS SHOWN ON THE CROSS SECTIONS ARE BASED ON THE APPROXIMATE DEPTH SUPPLIED BY THE UTILITY COMPANY. IT SHALL BE THE CONTRACTOR'S RESPONSIBILITY TO ASCERTAIN THEIR EXACT LOCATION FROM THE UTILITY COMPANIES AND BY FIELD INSPECTION.

SEE PLAN, UTILITY, LAYOUT AND GRADING PLANS FOR SCOPE OF WORK ITEMS. ALL OTHER INFORMATION SHOWN IS FOR INFORMATION ONLY.

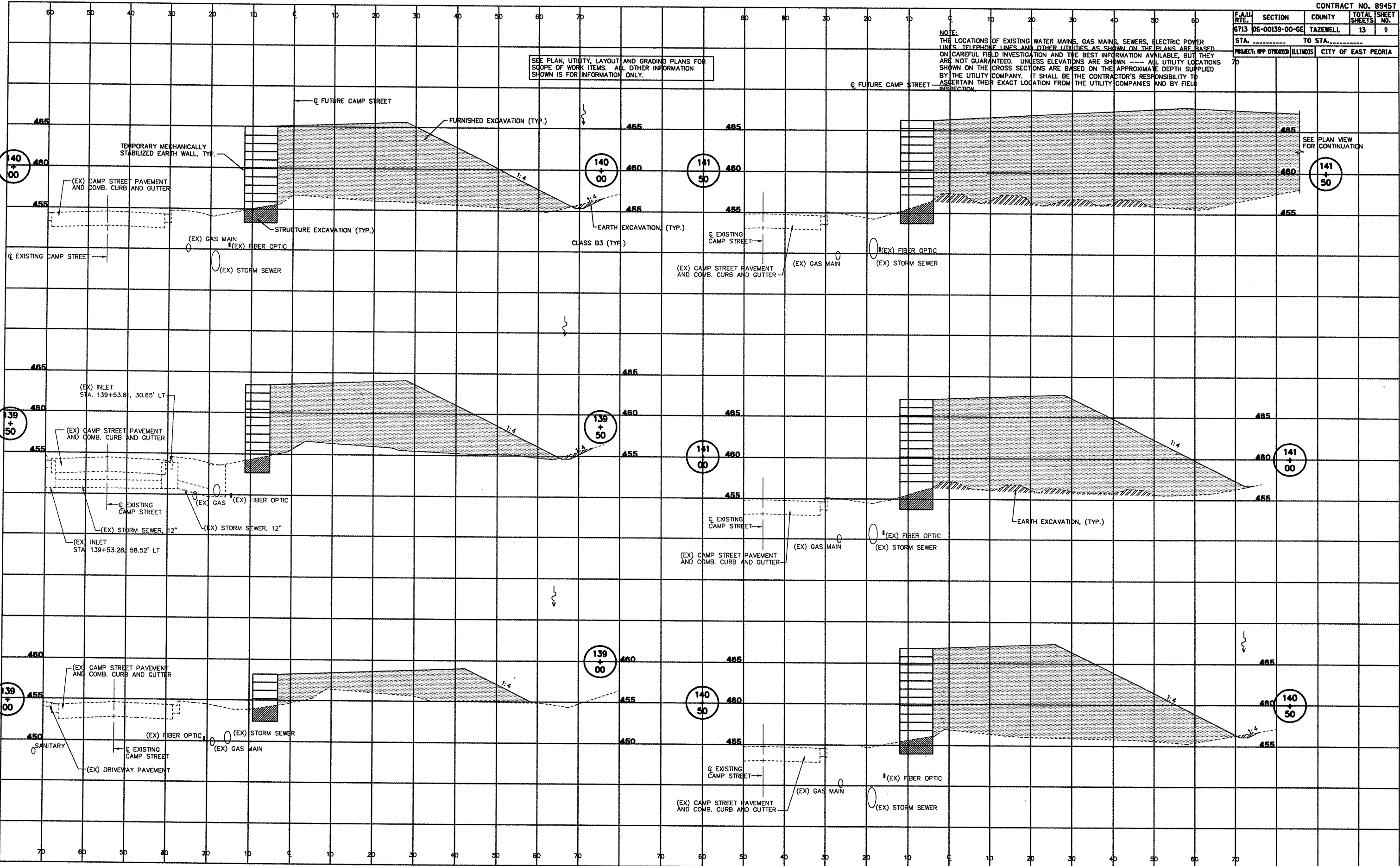
DATE	BY	REVISION

FINAL SURVEY PLOTTED DATE \_\_\_\_\_  
NOTE BOOK NO. \_\_\_\_\_  
AREAS CHECKED \_\_\_\_\_

DATE	BY	REVISION

ORIGINAL SURVEY PLOTTED DATE \_\_\_\_\_  
NOTE BOOK NO. \_\_\_\_\_  
AREAS CHECKED \_\_\_\_\_

PLOT DATE = #DATE#  
PLOT SCALE = #SCALE#  
USER NAME = #USER#



F.A.U. RTE.	SECTION	COUNTY	TOTAL SHEETS	SHEET NO.
6713	06-00139-00-GE	TAZEWELL	13	10
STA. 142+00		TO STA. 144+00		
PROJECT: WPP 0790013 (ILLINOIS) CITY OF EAST PEORIA				

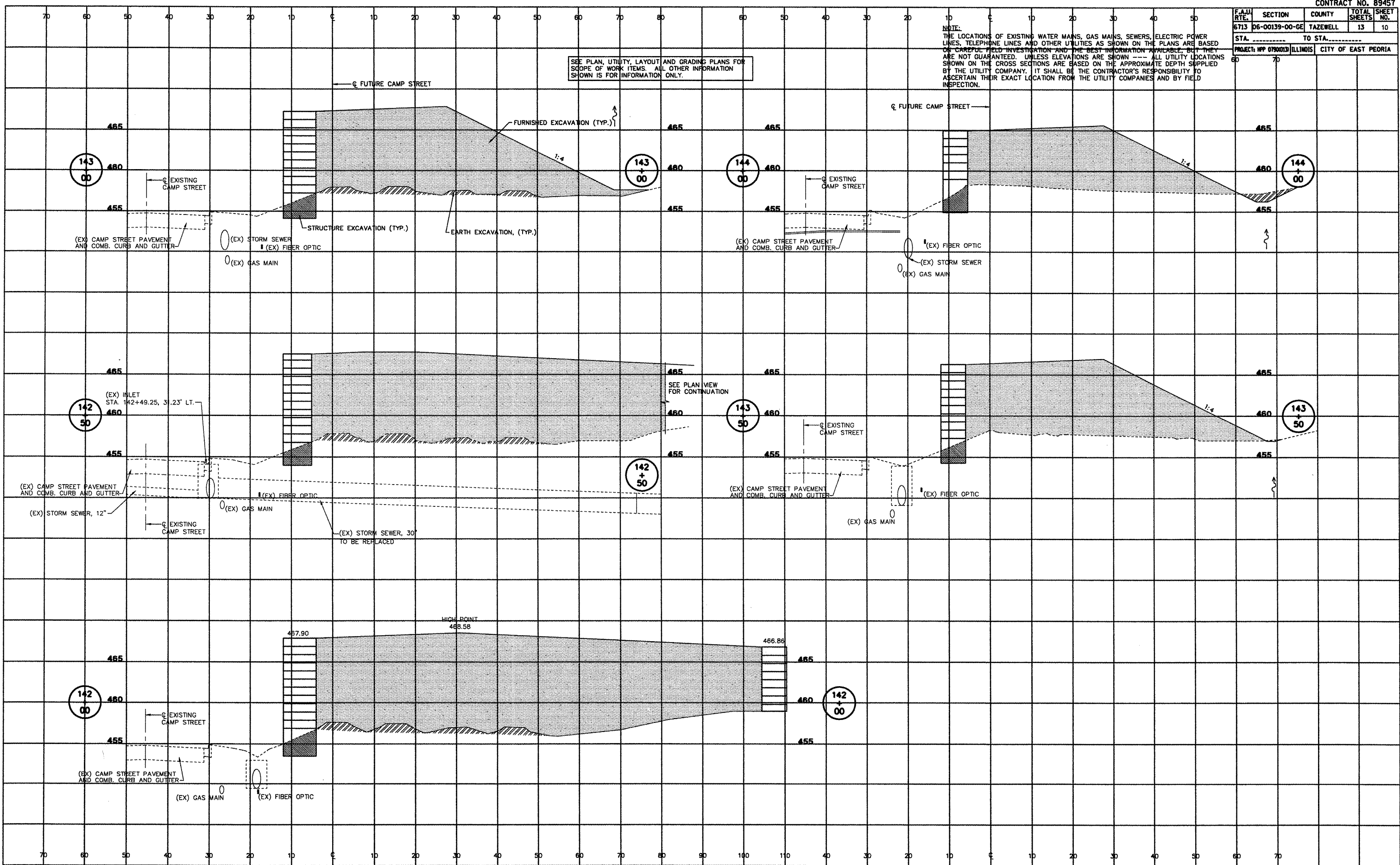
NOTE:  
 THE LOCATIONS OF EXISTING WATER MAINS, GAS MAINS, SEWERS, ELECTRIC POWER LINES, TELEPHONE LINES AND OTHER UTILITIES AS SHOWN ON THE PLANS ARE BASED ON CAREFUL FIELD INVESTIGATION AND THE BEST INFORMATION AVAILABLE, BUT THEY ARE NOT GUARANTEED. UNLESS ELEVATIONS ARE SHOWN --- ALL UTILITY LOCATIONS SHOWN ON THE CROSS SECTIONS ARE BASED ON THE APPROXIMATE DEPTH SUPPLIED BY THE UTILITY COMPANY. IT SHALL BE THE CONTRACTOR'S RESPONSIBILITY TO ASCERTAIN THEIR EXACT LOCATION FROM THE UTILITY COMPANIES AND BY FIELD INSPECTION.

SEE PLAN, UTILITY LAYOUT AND GRADING PLANS FOR SCOPE OF WORK ITEMS. ALL OTHER INFORMATION SHOWN IS FOR INFORMATION ONLY.

DATE	
BY	
REVISIONS	
NO.	
DATE	
BY	
REVISIONS	
NO.	
DATE	
BY	
REVISIONS	
NO.	

DATE	
BY	
REVISIONS	
NO.	
DATE	
BY	
REVISIONS	
NO.	
DATE	
BY	
REVISIONS	
NO.	

PLOT DATE = #DATE#  
 FILE NAME = #FILE#  
 PLOT SCALE = #SCALE#  
 USER NAME = #USER#





CONTRACT NO. 89457			
F.A.U. RTE.	SECTION	COUNTY	TOTAL SHEET NO.
6713	06-00139-00-GE	TAZEWELL	13
STA. _____		TO STA. _____	
PROJECT: HP 079001D ILLINOIS CITY OF EAST PEORIA			

**WHITNEY & ASSOCIATES**  
2408 West Nebraska Avenue  
PEORIA, ILLINOIS 61604

**BORING LOG**  
BORING NO. B-01  
DATE 10-14-04  
PROJECT Heritage Street Development  
LOCATION East Peoria, Illinois  
SHEET 1 OF 6  
W. & A. FILE NO. 3932

PROJECT: HERITAGE STREET DEVELOPMENT  
LOCATION: East Peoria, Illinois  
BORING LOCATION: See Plot Plan Sheet  
BORING TYPE: Hollow-Stem Auger  
WEATHER CONDITIONS: Partly Cloudy & Mild  
SOIL CLASSIFICATION SYSTEM: U.S.B.S.C.  
SEEPAGE WATER ENCOUNTERED AT ELEVATION: -130.8 F.T.  
GROUND SURFACE ELEVATION: 457.1  
GROUND WATER ELEVATION AT COMPLETION: -112.2 F.T.  
BORING DISCONTINUED AT ELEVATION: 457.1  
GROUND WATER ELEVATION AT COMPLETION: -112.2 F.T.

DEPTH IN FEET	SAMPLE TYPE	N	Qp	Qc	Ds	Ms
0-30	ST	-	0.4	0.3	92	26
30-34	SS	1 2(3)	0.5	0.5	94	22
34-38	SS	1 2(214)	0.8	0.8	96	21
38-42	ST	-	-	-	-	11
42-46	ST	-	-	-	-	7
46-50	SS	1 2(214)	-	-	-	19
50-54	SS	0 1(12)	-	-	-	21
54-58	SS	2 2(214)	0.8	0.7	94	25
58-62	SS	1 2(3)	0.4	0.2	90	27

N - BLOWS DELIVERED PER FOOT BY A 140 LB. HAMMER  
Qp - CALIBRATED PENETROMETER READING - T.S.F.  
Qc - UNCONFINED COMPRESSIVE STRENGTH - T.S.F.  
Ds - NATURAL DRY DENSITY - P.C.F.  
Ms - NATURAL MOISTURE CONTENT - %  
ST - SHELBY TUBE SAMPLE

WHITNEY & ASSOCIATES  
PEORIA, ILLINOIS

**WHITNEY & ASSOCIATES**  
2408 West Nebraska Avenue  
PEORIA, ILLINOIS 61604

**BORING LOG**  
BORING NO. B-01  
DATE 10-14-04  
PROJECT Heritage Street Development  
LOCATION East Peoria, Illinois  
SHEET 2 OF 6  
W. & A. FILE NO. 3932

PROJECT: HERITAGE STREET DEVELOPMENT  
LOCATION: East Peoria, Illinois  
BORING LOCATION: See Plot Plan Sheet  
BORING TYPE: Hollow-Stem Auger  
WEATHER CONDITIONS: Partly Cloudy & Mild  
SOIL CLASSIFICATION SYSTEM: U.S.B.S.C.  
SEEPAGE WATER ENCOUNTERED AT ELEVATION: -130.8 F.T.  
GROUND SURFACE ELEVATION: 457.1  
GROUND WATER ELEVATION AT COMPLETION: -112.2 F.T.  
BORING DISCONTINUED AT ELEVATION: 457.1  
GROUND WATER ELEVATION AT COMPLETION: -112.2 F.T.

DEPTH IN FEET	SAMPLE TYPE	N	Qp	Qc	Ds	Ms
60-64	SS	6 8 9(17)	-	-	-	-
64-68	SS	11 14 15(29)	-	-	-	-
68-72	SS	12 13 12(25)	-	-	-	-
72-76	SS	12 13 11(24)	-	-	-	-
76-80	SS	12 10 14(24)	-	-	-	-
80-84	SS	12 10 8(16)	-	-	-	-

N - BLOWS DELIVERED PER FOOT BY A 140 LB. HAMMER  
Qp - CALIBRATED PENETROMETER READING - T.S.F.  
Qc - UNCONFINED COMPRESSIVE STRENGTH - T.S.F.  
Ds - NATURAL DRY DENSITY - P.C.F.  
Ms - NATURAL MOISTURE CONTENT - %  
ST - SHELBY TUBE SAMPLE

WHITNEY & ASSOCIATES  
PEORIA, ILLINOIS

**WHITNEY & ASSOCIATES**  
2408 West Nebraska Avenue  
PEORIA, ILLINOIS 61604

**BORING LOG**  
BORING NO. B-01  
DATE 10-14-04  
PROJECT Heritage Street Development  
LOCATION East Peoria, Illinois  
SHEET 3 OF 6  
W. & A. FILE NO. 3932

PROJECT: HERITAGE STREET DEVELOPMENT  
LOCATION: East Peoria, Illinois  
BORING LOCATION: See Plot Plan Sheet  
BORING TYPE: Hollow-Stem Auger  
WEATHER CONDITIONS: Partly Cloudy & Mild  
SOIL CLASSIFICATION SYSTEM: U.S.B.S.C.  
SEEPAGE WATER ENCOUNTERED AT ELEVATION: -130.8 F.T.  
GROUND SURFACE ELEVATION: 457.1  
GROUND WATER ELEVATION AT COMPLETION: -112.2 F.T.  
BORING DISCONTINUED AT ELEVATION: 457.1  
GROUND WATER ELEVATION AT COMPLETION: -112.2 F.T.

DEPTH IN FEET	SAMPLE TYPE	N	Qp	Qc	Ds	Ms
84-88	SS	8 9 8(17)	-	-	-	-
88-92	SS	12 10 14(24)	-	-	-	-
92-96	SS	12 10 8(17)	-	-	-	-
96-100	SS	12 10 8(17)	-	-	-	-
100-104	SS	12 10 8(17)	-	-	-	-
104-108	SS	12 10 8(17)	-	-	-	-
108-112	SS	12 10 8(17)	-	-	-	-
112-116	SS	12 10 8(17)	-	-	-	-
116-120	SS	12 10 8(17)	-	-	-	-

N - BLOWS DELIVERED PER FOOT BY A 140 LB. HAMMER  
Qp - CALIBRATED PENETROMETER READING - T.S.F.  
Qc - UNCONFINED COMPRESSIVE STRENGTH - T.S.F.  
Ds - NATURAL DRY DENSITY - P.C.F.  
Ms - NATURAL MOISTURE CONTENT - %  
ST - SHELBY TUBE SAMPLE

WHITNEY & ASSOCIATES  
PEORIA, ILLINOIS

**WHITNEY & ASSOCIATES**  
2408 West Nebraska Avenue  
PEORIA, ILLINOIS 61604

**BORING LOG**  
BORING NO. B-01  
DATE 10-14-04  
PROJECT Heritage Street Development  
LOCATION East Peoria, Illinois  
SHEET 4 OF 6  
W. & A. FILE NO. 3932

PROJECT: HERITAGE STREET DEVELOPMENT  
LOCATION: East Peoria, Illinois  
BORING LOCATION: See Plot Plan Sheet  
BORING TYPE: Hollow-Stem Auger  
WEATHER CONDITIONS: Partly Cloudy & Mild  
SOIL CLASSIFICATION SYSTEM: U.S.B.S.C.  
SEEPAGE WATER ENCOUNTERED AT ELEVATION: -130.8 F.T.  
GROUND SURFACE ELEVATION: 457.1  
GROUND WATER ELEVATION AT COMPLETION: -112.2 F.T.  
BORING DISCONTINUED AT ELEVATION: 457.1  
GROUND WATER ELEVATION AT COMPLETION: -112.2 F.T.

DEPTH IN FEET	SAMPLE TYPE	N	Qp	Qc	Ds	Ms
120-124	SS	9 14 16(39)	-	-	-	-
124-128	SS	8 13 15(28)	-	-	-	-
128-132	SS	12 9 11(24)	-	-	-	-
132-136	SS	12 10 8(17)	-	-	-	-
136-140	SS	12 10 8(17)	-	-	-	-
140-144	SS	12 10 8(17)	-	-	-	-

N - BLOWS DELIVERED PER FOOT BY A 140 LB. HAMMER  
Qp - CALIBRATED PENETROMETER READING - T.S.F.  
Qc - UNCONFINED COMPRESSIVE STRENGTH - T.S.F.  
Ds - NATURAL DRY DENSITY - P.C.F.  
Ms - NATURAL MOISTURE CONTENT - %  
ST - SHELBY TUBE SAMPLE

WHITNEY & ASSOCIATES  
PEORIA, ILLINOIS

**WHITNEY & ASSOCIATES**  
2408 West Nebraska Avenue  
PEORIA, ILLINOIS 61604

**BORING LOG**  
BORING NO. B-02  
DATE 10-14-04  
PROJECT Heritage Street Development  
LOCATION East Peoria, Illinois  
SHEET 1 OF 6  
W. & A. FILE NO. 3932

PROJECT: HERITAGE STREET DEVELOPMENT  
LOCATION: East Peoria, Illinois  
BORING LOCATION: See Plot Plan Sheet  
BORING TYPE: Hollow-Stem Auger  
WEATHER CONDITIONS: Partly Cloudy & Mild  
SOIL CLASSIFICATION SYSTEM: U.S.B.S.C.  
SEEPAGE WATER ENCOUNTERED AT ELEVATION: None  
GROUND SURFACE ELEVATION: 462.2  
GROUND WATER ELEVATION AT COMPLETION: None  
BORING DISCONTINUED AT ELEVATION: 462.2  
GROUND WATER ELEVATION AT COMPLETION: None

DEPTH IN FEET	SAMPLE TYPE	N	Qp	Qc	Ds	Ms
0-3	SS	15	2.9	-	-	17
3-6	SS	10	2.1	-	-	18
6-9	SS	7	0.8	-	-	30
9-12	SS	7	0.8	-	-	28
12-15	SS	4	0.5	-	-	32
15-18	SS	5	1.0	-	-	25

N - BLOWS DELIVERED PER FOOT BY A 140 LB. HAMMER  
Qp - CALIBRATED PENETROMETER READING - T.S.F.  
Qc - UNCONFINED COMPRESSIVE STRENGTH - T.S.F.  
Ds - NATURAL DRY DENSITY - P.C.F.  
Ms - NATURAL MOISTURE CONTENT - %  
ST - SHELBY TUBE SAMPLE

WHITNEY & ASSOCIATES  
PEORIA, ILLINOIS

**WHITNEY & ASSOCIATES**  
2408 West Nebraska Avenue  
PEORIA, ILLINOIS 61604

**BORING LOG**  
BORING NO. B-03  
DATE 10-14-04  
PROJECT Heritage Street Development  
LOCATION East Peoria, Illinois  
SHEET 2 OF 6  
W. & A. FILE NO. 3932

PROJECT: HERITAGE STREET DEVELOPMENT  
LOCATION: East Peoria, Illinois  
BORING LOCATION: See Plot Plan Sheet  
BORING TYPE: Hollow-Stem Auger  
WEATHER CONDITIONS: Partly Cloudy & Mild  
SOIL CLASSIFICATION SYSTEM: U.S.B.S.C.  
SEEPAGE WATER ENCOUNTERED AT ELEVATION: None  
GROUND SURFACE ELEVATION: 462.2  
GROUND WATER ELEVATION AT COMPLETION: None  
BORING DISCONTINUED AT ELEVATION: 462.2  
GROUND WATER ELEVATION AT COMPLETION: None

DEPTH IN FEET	SAMPLE TYPE	N	Qp	Qc	Ds	Ms
0-3	SS	18	-	-	-	3
3-6	SS	12	-	-	-	5
6-9	SS	5	0.8	-	-	19
9-12	SS	7	0.9	-	-	24
12-15	SS	5	0.5	-	-	31
15-18	SS	5	1.0	-	-	28

N - BLOWS DELIVERED PER FOOT BY A 140 LB. HAMMER  
Qp - CALIBRATED PENETROMETER READING - T.S.F.  
Qc - UNCONFINED COMPRESSIVE STRENGTH - T.S.F.  
Ds - NATURAL DRY DENSITY - P.C.F.  
Ms - NATURAL MOISTURE CONTENT - %  
ST - SHELBY TUBE SAMPLE

WHITNEY & ASSOCIATES  
PEORIA, ILLINOIS

SEE SHEET 7 FOR SOIL BORING LOCATIONS

FULL SOILS REPORT IS AVAILABLE UPON REQUEST FROM STS/AECOM, 111 NE JEFFERSON, PEORIA, IL. CONTACT DON BELL: 309-495-6524.

PLOT DATE = 04/15/05  
FILE NAME = #FILES#  
PLOT SCALE = #SCALE#  
USER NAME = #USER#

REVISIONS	
NAME	DATE

ILLINOIS DEPARTMENT OF TRANSPORTATION  
**CAMP STREET FILL**  
**SOIL BORING LOGS**

SCALE: \_\_\_\_\_  
DATE: 1-5-2009

DRAWN BY: MLB/MEW  
CHECKED BY: DOB



