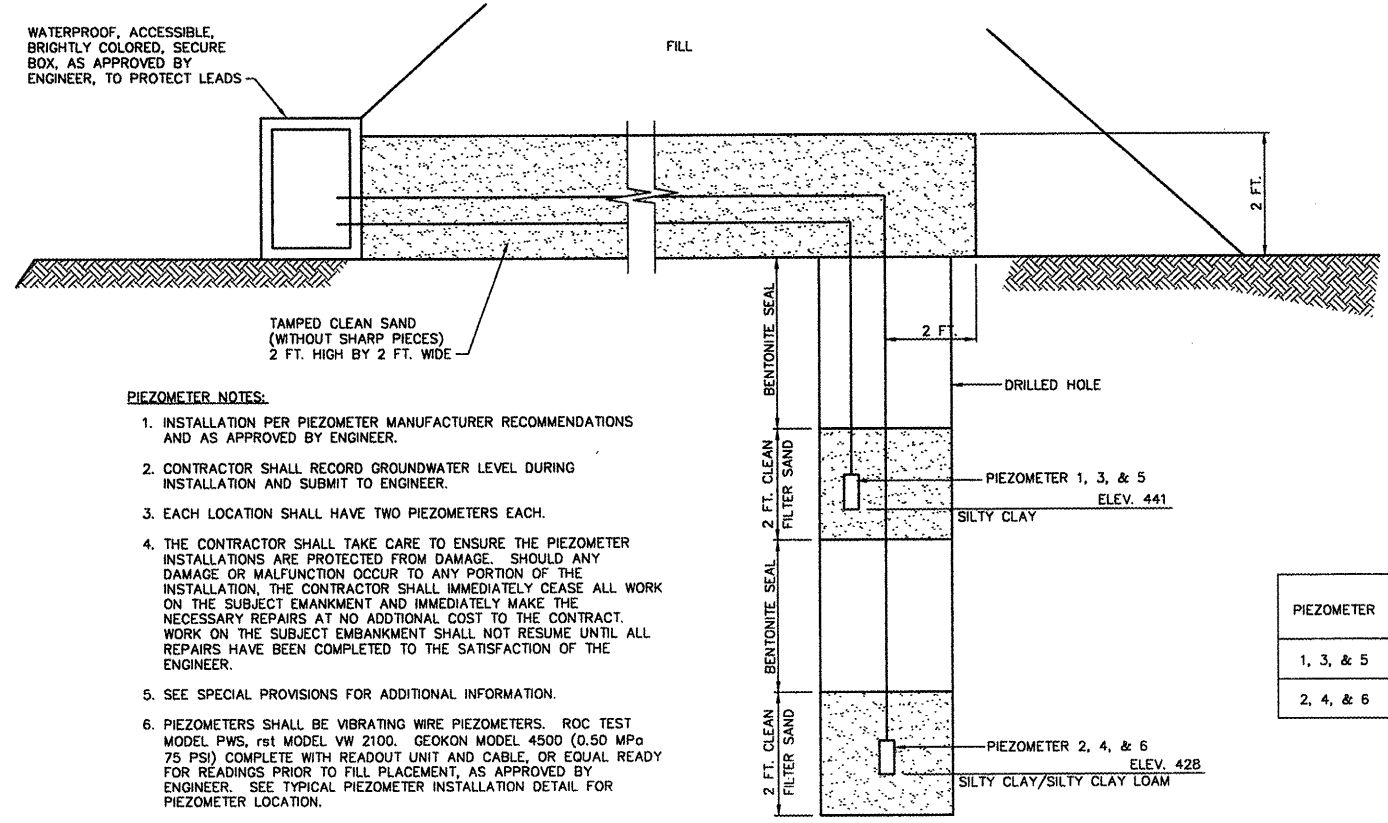


F.A.J.I. RTE.	SECTION	COUNTY	TOTAL SHEETS	SHEET NO.
6713	06-00139-00-GE	TAZEWELL	13	8
STA. _____		TO STA. _____		
PROJECT: HPP 0750013		ILLINOIS	CITY OF EAST PEORIA	



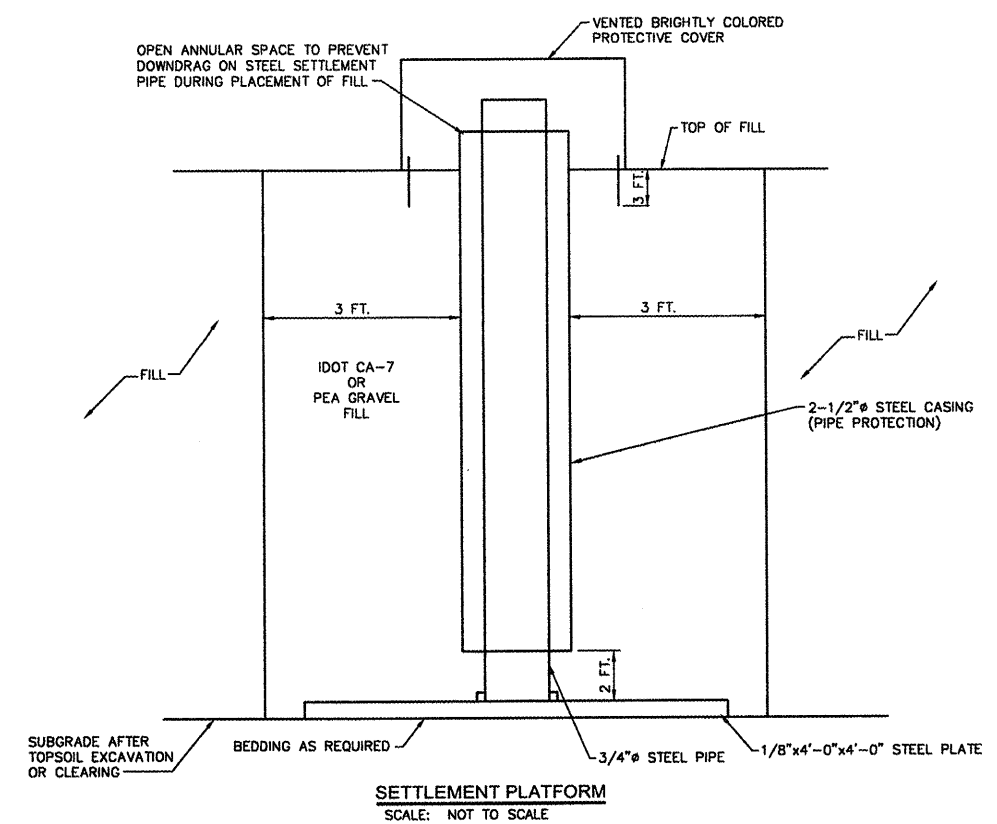
PIEZOMETER NOTES:

1. INSTALLATION PER PIEZOMETER MANUFACTURER RECOMMENDATIONS AND AS APPROVED BY ENGINEER.
2. CONTRACTOR SHALL RECORD GROUNDWATER LEVEL DURING INSTALLATION AND SUBMIT TO ENGINEER.
3. EACH LOCATION SHALL HAVE TWO PIEZOMETERS EACH.
4. THE CONTRACTOR SHALL TAKE CARE TO ENSURE THE PIEZOMETER INSTALLATIONS ARE PROTECTED FROM DAMAGE. SHOULD ANY DAMAGE OR MALFUNCTION OCCUR TO ANY PORTION OF THE INSTALLATION, THE CONTRACTOR SHALL IMMEDIATELY CEASE ALL WORK ON THE SUBJECT EMBANKMENT AND IMMEDIATELY MAKE THE NECESSARY REPAIRS AT NO ADDITIONAL COST TO THE CONTRACT. WORK ON THE SUBJECT EMBANKMENT SHALL NOT RESUME UNTIL ALL REPAIRS HAVE BEEN COMPLETED TO THE SATISFACTION OF THE ENGINEER.
5. SEE SPECIAL PROVISIONS FOR ADDITIONAL INFORMATION.
6. PIEZOMETERS SHALL BE VIBRATING WIRE PIEZOMETERS. ROC TEST MODEL PWS, rst MODEL VW 2100. GEOKON MODEL 4500 (0.50 MPa 75 PSI) COMPLETE WITH READOUT UNIT AND CABLE, OR EQUAL READY FOR READINGS PRIOR TO FILL PLACEMENT, AS APPROVED BY ENGINEER. SEE TYPICAL PIEZOMETER INSTALLATION DETAIL FOR PIEZOMETER LOCATION.

PIEZOMETER	PIEZOMETER DEPTH	END PRIMARY CONSOLIDATION READING	ELEVATION
1, 3, & 5	16 - 18'	2.6 PSI (375 PSF)	441 FT
2, 4, & 6	28 - 30'	8.2 PSI (1185 PSF)	428 FT

TYPICAL PIEZOMETER INSTALLATION DETAIL
SCALE: NOT TO SCALE

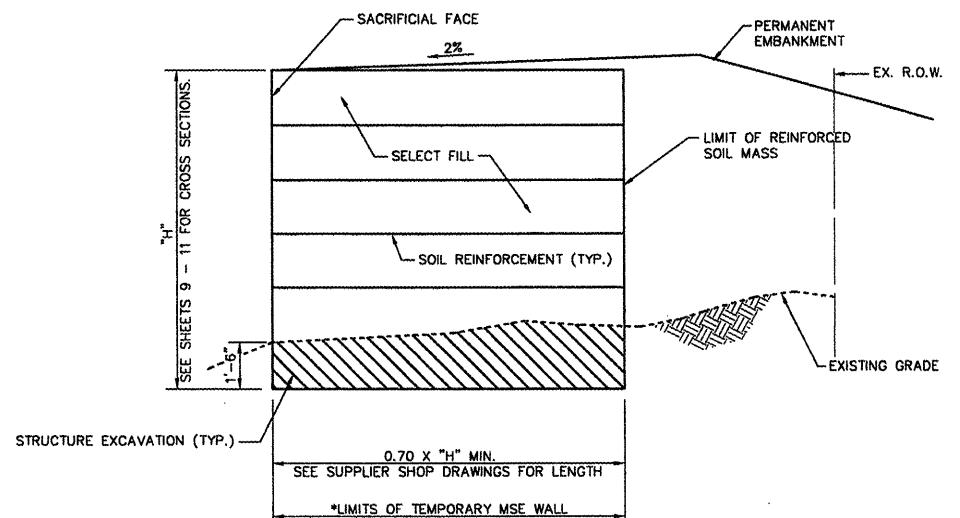
SEE PLAN SHEET FOR PIEZOMETER AND SETTLEMENT PLATFORM LOCATIONS



SETTLEMENT PLATFORM NOTES:

1. THE HORIZONTAL AND VERTICAL LOCATION OF INSTALLED SETTLEMENT PLATFORM BASES SHALL BE RECORDED AND SUBMITTED BY THE ENGINEER, PRIOR TO PLACEMENT OF FILL.
2. SUGGESTED SETTLEMENT PLATFORM PROCEDURE SUBJECT TO APPROVAL BY THE ENGINEER: CARE SHALL BE TAKEN TO MAINTAIN PIPE VERTICALLY, AND A RECORD OF ADDED PIPE LENGTH SHALL BE MADE AS FILL IS PLACED. AT THE TIME OF BASE PLATE INSTALLATION, AN INITIAL REFERENCE MARK SHALL BE SCRIBED ON THE RISER PIPE AND ITS ELEVATION DETERMINED AND RECORDED. THE PIPE SHALL BE SCRIBED TO AN ACCURACY OF 3 mm (0.01 FT.) AT MAXIMUM INTERVALS OF 1.5 M (5 FT.) MEASURED FROM THE INITIAL MARK. IMMEDIATELY AFTER THE PIPE IS SCRIBED, THE GRADUATIONS SHALL BE NUMBERED TO REFLECT THE DISTANCE FROM THE INITIAL SCRIBE. WHEN PIPE LENGTHS ARE ADDED, THE EXTENSIONS SHALL BE SCRIBED IN A SIMILAR MANNER BY TAPE MEASUREMENT FROM SCRIBES ON THE NEXT LOWER PIPE. AN ADJUSTABLE HOSE CLAMP SHALL BE PLACED AROUND THE PIPE AT THE HIGHEST SCRIBE MARK TO PROVIDE A PLACE TO REST THE SURVEY ROD WHEN DETERMINING THE ELEVATION OF THE SCRIBE MARK. THE CLAMP SHALL BE LOOSENEED AND MOVED UP AS FILL IS PLACED.
3. THE CONTRACTOR SHALL USE MANUAL METHODS OR SMALL EQUIPMENT (e.g. WALK BEHIND COMPACTORS) TO COMPACT EMBANKMENT WITHIN 1 METER OF PLATFORM RISER.
4. SEE SPECIAL PROVISIONS FOR ADDITIONAL INFORMATION.
5. TOTAL SETTLEMENT IS ESTIMATED TO BE 8". THIS INCLUDES 5" OF SETTLEMENT DURING CONSTRUCTION AND 3" OF SETTLEMENT ESTIMATED TO OCCUR DURING THE 3 MONTHS AFTER COMPLETION OF THE FILL.

SETTLEMENT PLATFORM
SCALE: NOT TO SCALE



TEMPORARY MSE WALL DETAIL
SCALE: NOT TO SCALE

* PER IDOT SPECIAL PROVISION "TEMPORARY MECHANICALLY STABILIZED EARTH WALL"

PLOT DATE = #DATE#
FILE NAME = #FILE#
USER NAME = #USER#

STS CONSULTANTS
111 NE Jefferson Ave.
Peoria, Illinois 61602
PH: (309) 676-8444
FAX: (309) 676-5445
IL Design Firm Reg. No. 184-001518

REVISIONS	
NAME	DATE

ILLINOIS DEPARTMENT OF TRANSPORTATION
CAMP STREET FILL
PIEZOMETER, SETTLEMENT PLATFORMS & MSE WALL DETAILS
SCALE: _____ DRAWN BY: MLB/MEW
DATE: 1-5-2009 CHECKED BY: DDB