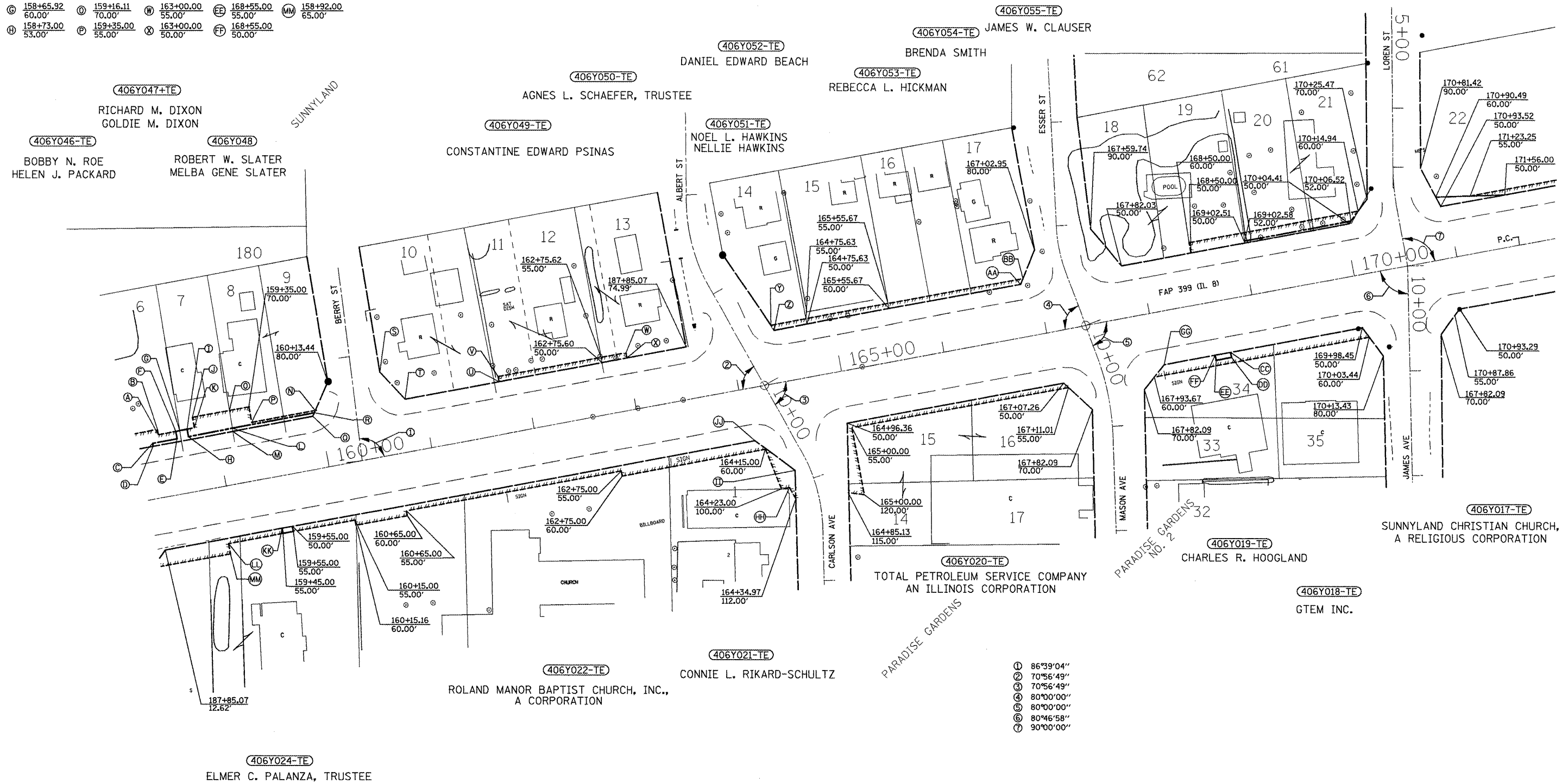




A 158+45.00 60.00'	D 158+73.00 60.00'	G 159+93.44 50.00'	V 164+41.60 55.00'	GG 168+05.25 50.00'
B 158+45.00 65.00'	E 158+80.00 70.00'	H 159+95.44 53.00'	Z 164+43.81 50.00'	HH 164+31.00 100.00'
C 158+38.00 53.00'	K 158+80.00 60.00'	S 160+64.14 80.00'	AA 166+83.97 50.00'	II 164+39.28 85.00'
D 158+38.00 50.00'	L 159+15.79 53.00'	T 160+83.26 50.00'	BB 166+87.13 55.00'	JJ 164+06.48 50.00'
E 158+62.00 53.00'	M 159+15.73 50.00'	U 161+75.00 50.00'	CC 168+70.00 50.00'	KK 159+45.00 50.00'
F 158+62.00 60.00'	N 159+96.77 55.00'	V 161+75.00 55.00'	DD 168+70.00 55.00'	LL 158+92.00 55.00'
G 158+65.92 60.00'	O 159+16.11 70.00'	W 163+00.00 55.00'	EE 168+55.00 55.00'	MM 158+92.00 65.00'
H 158+73.00 53.00'	P 159+35.00 55.00'	X 163+00.00 50.00'	FF 168+55.00 50.00'	



- ① 86°39'04"
- ② 70°56'49"
- ③ 70°56'49"
- ④ 80°00'00"
- ⑤ 80°00'00"
- ⑥ 80°46'58"
- ⑦ 90°00'00"

LEGEND	
	EXISTING RIGHT OF WAY LINE
	PROPOSED RIGHT OF WAY LINE
	PROPOSED TEMPORARY EASEMENT LINE

FOR OLD ROW SEE FILE 4 SHEET(S) 20

PLATFILE: 019

FILE NAME: 118seg3.m32 Jobrow.gpk 118brow.lpf Field Book No. 2870	USER NAME = crespole PLOT SCALE = 200.0000' / IN. PLOT DATE = 12/8/2008	DESIGNED - PCF DRAWN - MLA CHECKED - PCF DATE - 12-2008	REVISED - REVISED - REVISED - REVISED -	<b>STATE OF ILLINOIS DEPARTMENT OF TRANSPORTATION</b>	<b>RIGHT OF WAY PLANS</b>	F.A.P. RTE. 399 (IL 8) FED. ROAD DIST. NO.	SECTION 36R-8 030427-06 ILLINOIS FED. AID PROJECT	COUNTY TAZEWELL	TOTAL SHEETS 429	SHEET NO. 157 CONTRACT NO. 68258
				SCALE: 1"=100'	PROJECT SHEET NO. 3 OF 6 SHEETS	JOB NO. STA.	TO STA.			