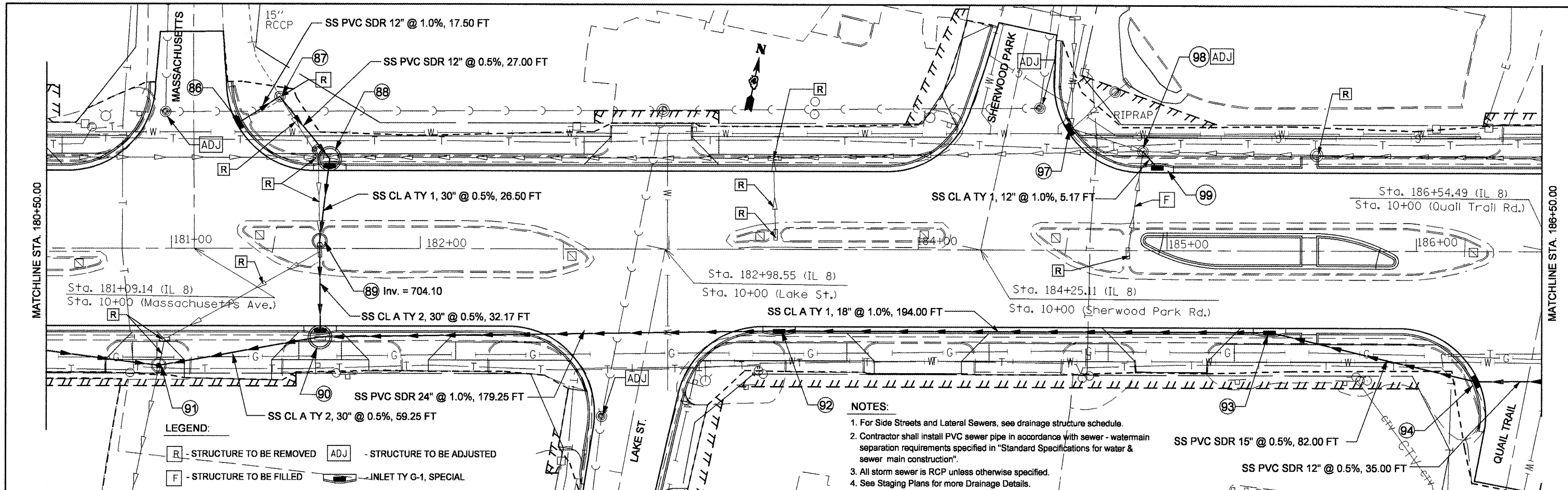


DATE	BY
DESIGNED	PLANNED
CHECKED	NOTED
DATE	BY

DATE	BY
DESIGNED	PLANNED
CHECKED	NOTED
DATE	BY

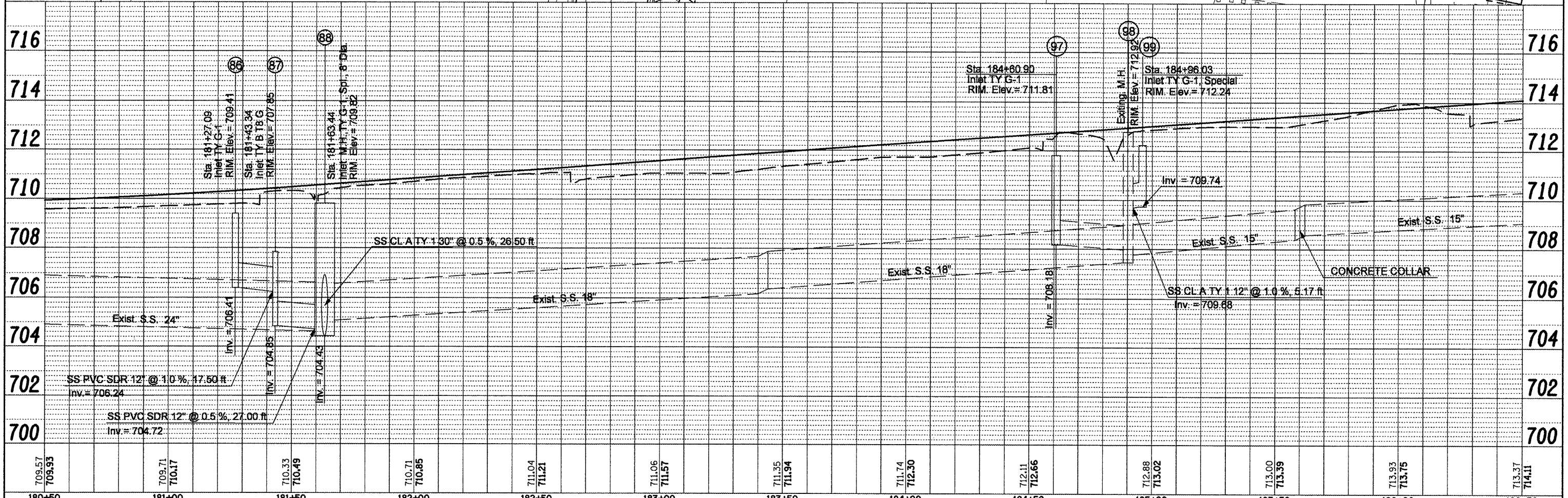


LEGEND:

R - STRUCTURE TO BE REMOVED ADJ - STRUCTURE TO BE ADJUSTED

F - STRUCTURE TO BE FILLED INLET TY G-1, SPECIAL

- NOTES:**
1. For Side Streets and Lateral Sewers, see drainage structure schedule.
 2. Contractor shall install PVC sewer pipe in accordance with sewer - watermain separation requirements specified in "Standard Specifications for water & sewer main construction".
 3. All storm sewer is RCP unless otherwise specified.
 4. See Staging Plans for more Drainage Details.



FILE NAME =	USER NAME = swisher-dh	DESIGNED -	REVISED -	STATE OF ILLINOIS DEPARTMENT OF TRANSPORTATION	IL RTE 8 - DRAINAGE PLANS LT SIDE	F.A.P. RTE.	SECTION	COUNTY	TOTAL SHEETS	SHEET NO.
copy of drainage plan lt.dgn		DRAWN -	REVISED -			399	36 R-8	TAZEWELL	429	108
PLOT SCALE = 48.0000' / IN.		CHECKED -	REVISED -			CONTRACT NO. 68258				
PLOT DATE = 12/11/2008		DATE -	REVISED -			FED. ROAD DIST. NO. 4 (ILLINOIS) FED. AID PROJECT				