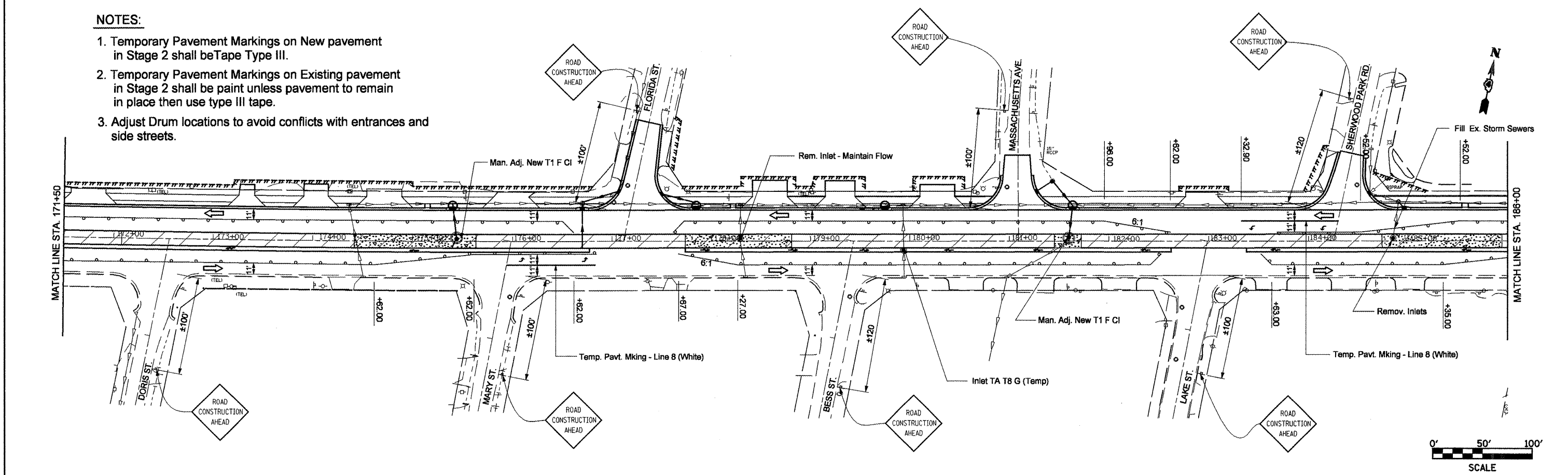


**NOTES:**

1. Temporary Pavement Markings on New pavement in Stage 2 shall be Tape Type III.
2. Temporary Pavement Markings on Existing pavement in Stage 2 shall be paint unless pavement to remain in place then use type III tape.
3. Adjust Drum locations to avoid conflicts with entrances and side streets.



FILE NAME = Copy of stage2aht.dgn	USER NAME = crespole	DESIGNED -	REVISED -	<b>STATE OF ILLINOIS DEPARTMENT OF TRANSPORTATION</b>	<b>IL RTE 8 - Stage 2</b>			F.A.P. RTE.	SECTION	COUNTY	TOTAL SHEETS	SHEET NO.
	PLOT SCALE = 100,0000' / IN.	DRAWN -	REVISED -					399	36 R-8	TAZEWELL	429	82
PLOT DATE = 12/23/2008	CHECKED -	REVISED -	REVISED -		CONTRACT NO. 68258			FED. ROAD DIST. NO. 4 ILLINOIS FED. AID PROJECT				
				SCALE:	SHEET NO.	OF SHEETS	STA.	TO STA.				