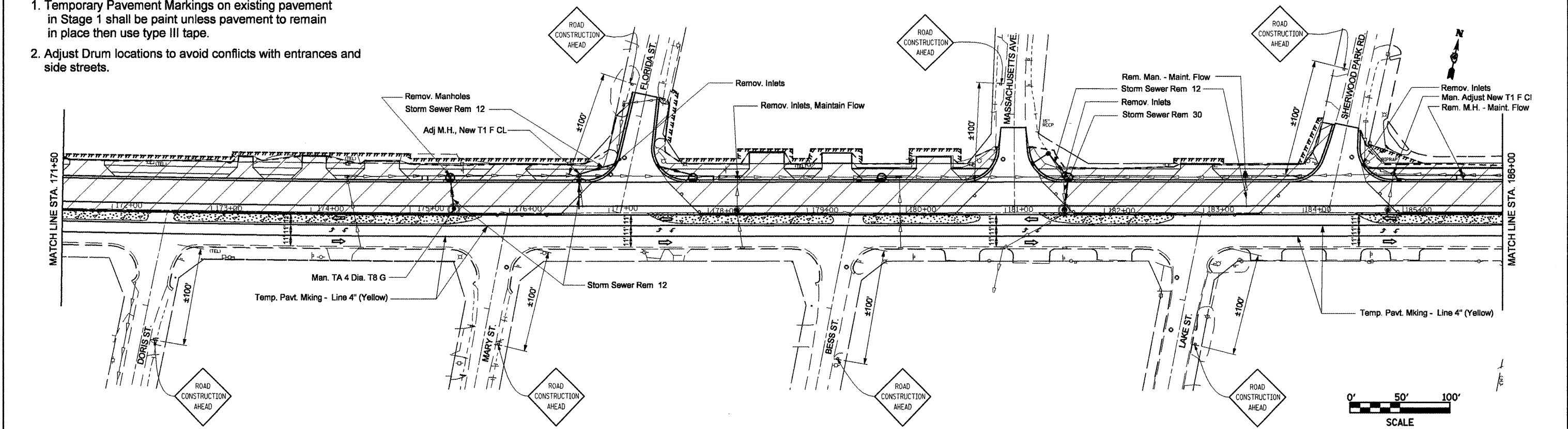


- NOTES:**
1. Temporary Pavement Markings on existing pavement in Stage 1 shall be paint unless pavement to remain in place then use type III tape.
 2. Adjust Drum locations to avoid conflicts with entrances and side streets.



FILE NAME = copy of stage1st.dgn	USER NAME = crespole	DESIGNED -	REVISED -	STATE OF ILLINOIS DEPARTMENT OF TRANSPORTATION	IL RTE 8 - Stage 1			F.A.P. RTE. 399	SECTION 36 R-8	COUNTY TAZEWELL	TOTAL SHEETS 429	SHEET NO. 79
	PLOT SCALE = 100.0000' / IN.	DRAWN -	REVISED -		SCALE:	SHEET NO. OF SHEETS	STA. TO STA.	CONTRACT NO. 68258				
	PLOT DATE = 12/11/2008	CHECKED -	REVISED -									
		DATE -	REVISED -									