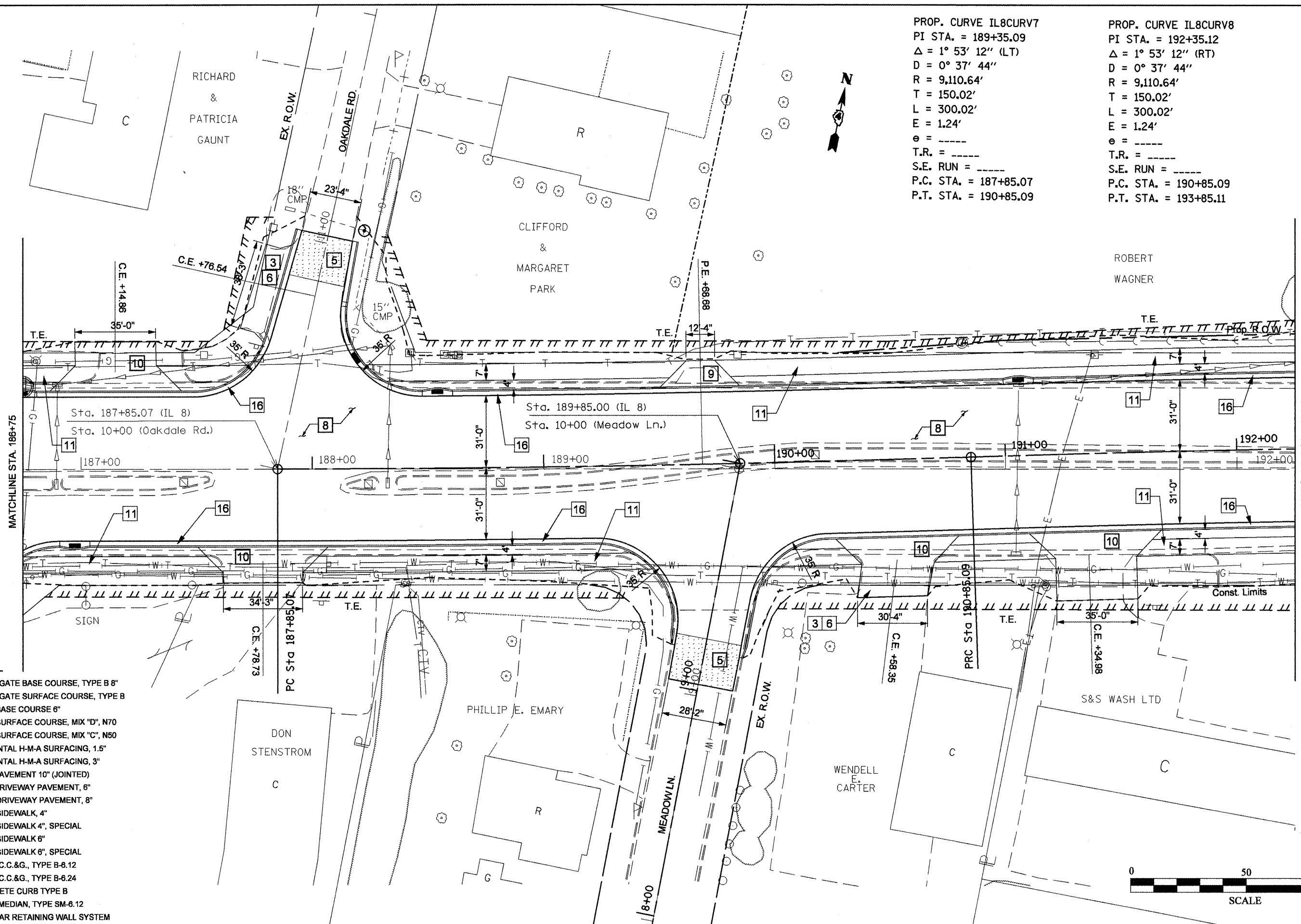


PROP. CURVE IL8CURV7
 PI STA. = 189+35.09
 $\Delta = 1^\circ 53' 12''$ (LT)
 $D = 0^\circ 37' 44''$
 $R = 9,110.64'$
 $T = 150.02'$
 $L = 300.02'$
 $E = 1.24'$
 $e = \text{---}$
 $T.R. = \text{---}$
 $S.E. RUN = \text{---}$
 $P.C. STA. = 187+85.07$
 $P.T. STA. = 190+85.09$

PROP. CURVE IL8CURV8
 PI STA. = 192+35.12
 $\Delta = 1^\circ 53' 12''$ (RT)
 $D = 0^\circ 37' 44''$
 $R = 9,110.64'$
 $T = 150.02'$
 $L = 300.02'$
 $E = 1.24'$
 $e = \text{---}$
 $T.R. = \text{---}$
 $S.E. RUN = \text{---}$
 $P.C. STA. = 190+85.09$
 $P.T. STA. = 193+85.11$



LEGEND:

- 1 AGGREGATE BASE COURSE, TYPE B 8"
- 2 AGGREGATE SURFACE COURSE, TYPE B
- 3 H-M-A BASE COURSE 6"
- 4 H-M-A SURFACE COURSE, MIX "D", N70
- 5 H-M-A SURFACE COURSE, MIX "C", N50
- 6 INCIDENTAL H-M-A SURFACING, 1.5"
- 7 INCIDENTAL H-M-A SURFACING, 3"
- 8 P.C.C. PAVEMENT 10" (JOINTED)
- 9 P.C.C. DRIVEWAY PAVEMENT, 6"
- 10 P.C.C. DRIVEWAY PAVEMENT, 8"
- 11 P.C.C. SIDEWALK 4"
- 12 P.C.C. SIDEWALK 4", SPECIAL
- 13 P.C.C. SIDEWALK 6"
- 14 P.C.C. SIDEWALK 6", SPECIAL
- 15 COMB. C.C.&G., TYPE B-6.12
- 16 COMB. C.C.&G., TYPE B-6.24
- 17 CONCRETE CURB TYPE B
- 18 CONC. MEDIAN, TYPE SM-6.12
- 19 MODULAR RETAINING WALL SYSTEM

FILE NAME =
 Copy of proposed plan sheet.dgn

USER NAME = crespole
 PLOT SCALE = 40.0000' / IN.
 PLOT DATE = 12/22/2008

DESIGNED -
 DRAWN -
 CHECKED -
 DATE -

REVISED -
 REVISED -
 REVISED -
 REVISED -

**STATE OF ILLINOIS
 DEPARTMENT OF TRANSPORTATION**

IL RTE 8 - PROPOSED PLANS

SCALE: SHEET NO. OF SHEETS STA. TO STA.

F.A.P. RTE.	SECTION	COUNTY	TOTAL SHEETS	SHEET NO.
399	36 R-8	TAZEWELL	429	60
CONTRACT NO. 68258				
FED. ROAD DIST. NO. 4 ILLINOIS FED. AID PROJECT				