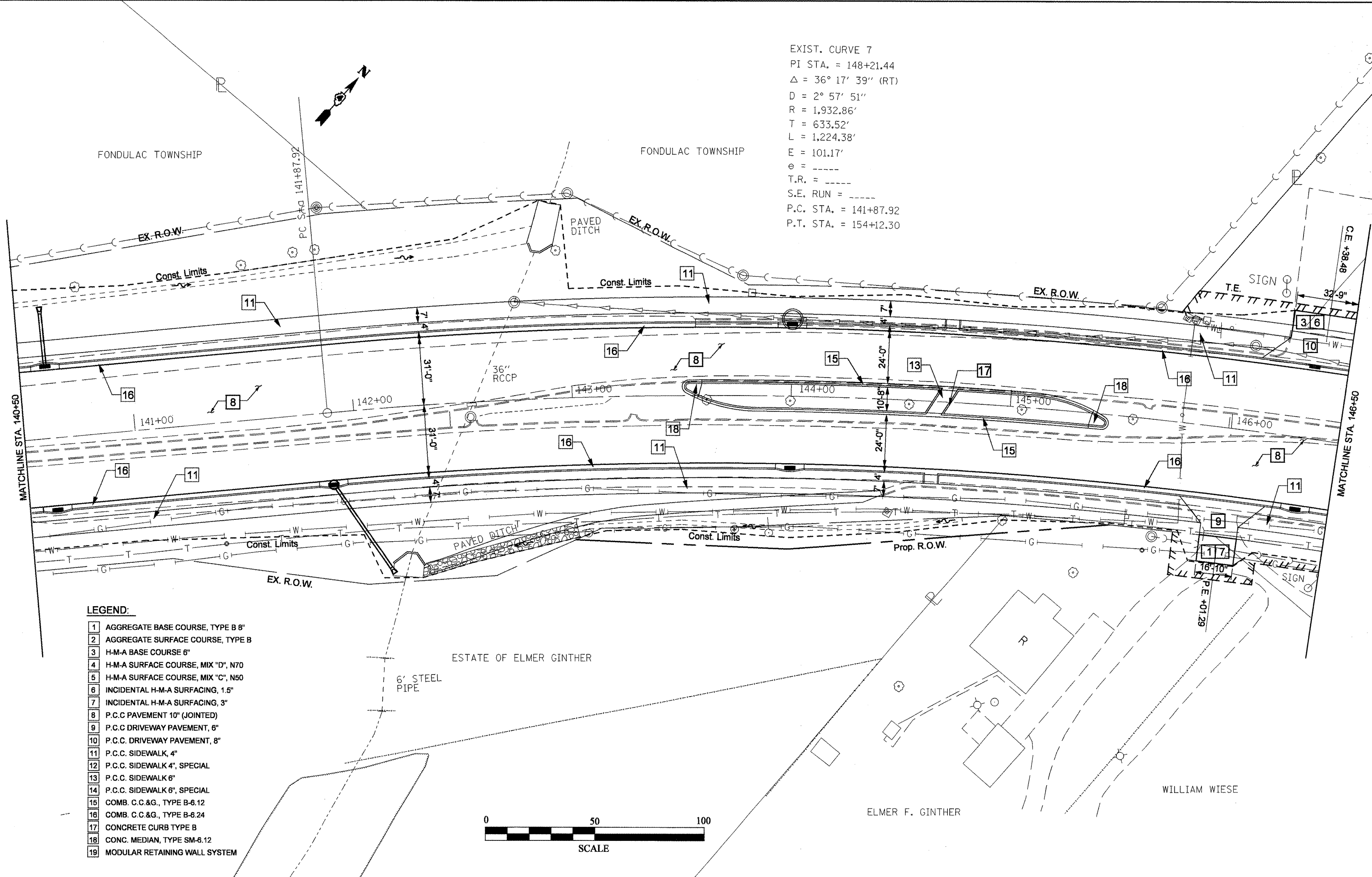
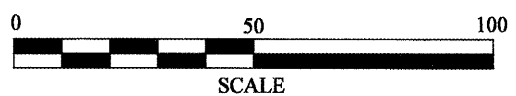


EXIST. CURVE 7
 PI STA. = 148+21.44
 $\Delta = 36^\circ 17' 39''$ (RT)
 D = 2° 57' 51"
 R = 1,932.86'
 T = 633.52'
 L = 1,224.38'
 E = 101.17'
 e = ----
 T.R. = ----
 S.E. RUN = ----
 P.C. STA. = 141+87.92
 P.T. STA. = 154+12.30



- LEGEND:**
- 1 AGGREGATE BASE COURSE, TYPE B 8"
 - 2 AGGREGATE SURFACE COURSE, TYPE B
 - 3 H-M-A BASE COURSE 6"
 - 4 H-M-A SURFACE COURSE, MIX "D", N70
 - 5 H-M-A SURFACE COURSE, MIX "C", N50
 - 6 INCIDENTAL H-M-A SURFACING, 1.5"
 - 7 INCIDENTAL H-M-A SURFACING, 3"
 - 8 P.C.C PAVEMENT 10" (JOINTED)
 - 9 P.C.C DRIVEWAY PAVEMENT, 6"
 - 10 P.C.C DRIVEWAY PAVEMENT, 8"
 - 11 P.C.C SIDEWALK, 4"
 - 12 P.C.C SIDEWALK 4", SPECIAL
 - 13 P.C.C SIDEWALK 6"
 - 14 P.C.C SIDEWALK 6", SPECIAL
 - 15 COMB. C.C.&G., TYPE B-6.12
 - 16 COMB. C.C.&G., TYPE B-6.24
 - 17 CONCRETE CURB TYPE B
 - 18 CONC. MEDIAN, TYPE SM-6.12
 - 19 MODULAR RETAINING WALL SYSTEM



FILE NAME =
Copy of proposed plan sheet.dgn

USER NAME = crespole
 PLOT SCALE = 40.0000' / IN.
 PLOT DATE = 12/22/2008

DESIGNED -	REVISED -
DRAWN -	REVISED -
CHECKED -	REVISED -
DATE -	REVISED -

**STATE OF ILLINOIS
DEPARTMENT OF TRANSPORTATION**

IL RTE 8 - PROPOSED PLANS

SCALE: SHEET NO. OF SHEETS STA. 140+50 TO STA. 146+50

F.A.P. RTE. 399	SECTION 36 R-8	COUNTY TAZEWELL	TOTAL SHEETS 429	SHEET NO. 52
CONTRACT NO. 68258				
FED. ROAD DIST. NO. 4 ILLINOIS FED. AID PROJECT				