

PHONE: (309)671-3454

PROJECT ENGINEER: MAUREEN ADDIS

PHONE: (309)671-3459

DESIGNERS: ELIAS ELDERZI/LEONEL CRESPO

CONTRACT NO. 68258

F.A.P. RTE.	SECTION	COUNTY	TOTAL SHEETS	SHEET NO.
339	36 R-8	TAZEWELL	429	1

429-15
428

D-94-067-02

FOR INDEX OF SHEETS AND LIST OF STANDARDS, SEE SHEET NO. 2

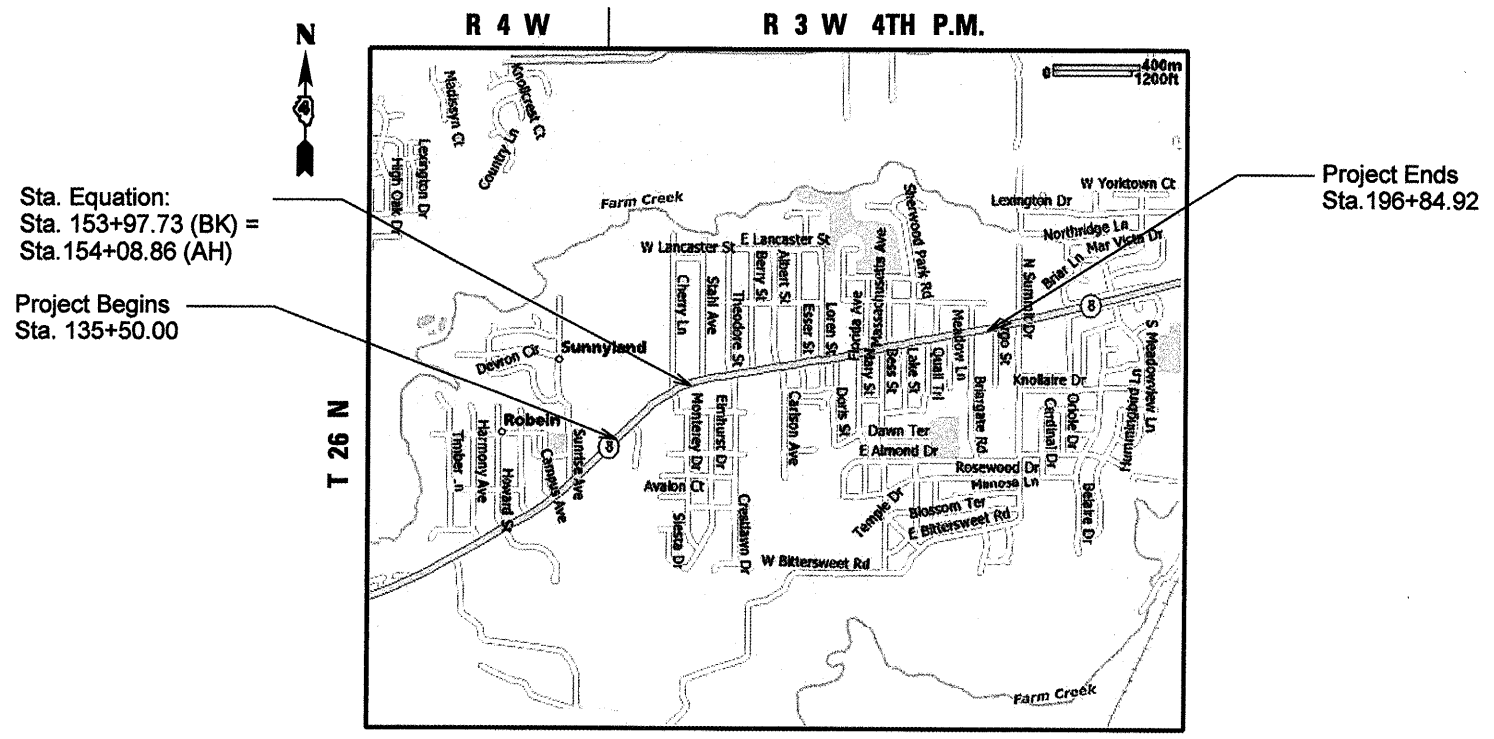
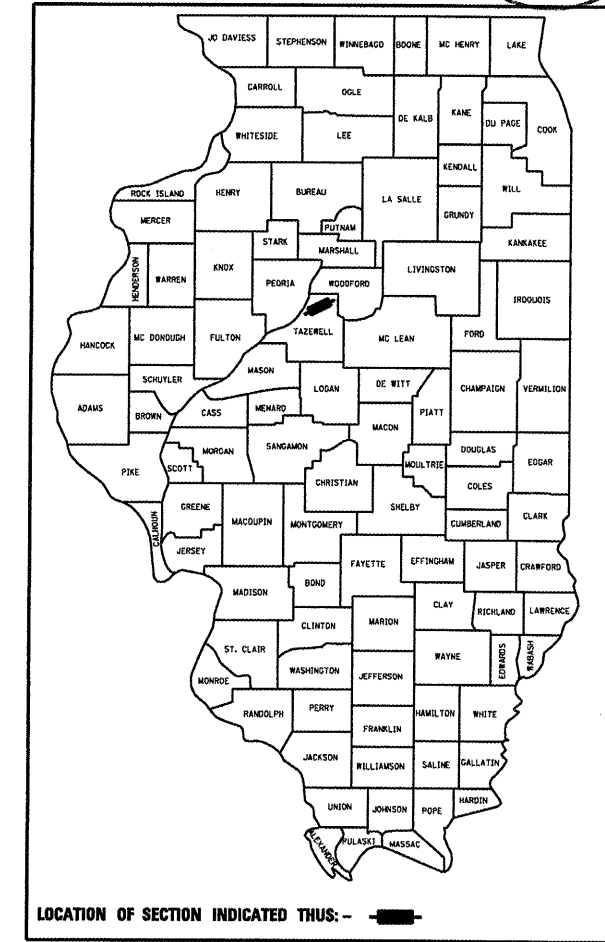
STATE OF ILLINOIS
DEPARTMENT OF TRANSPORTATION
DIVISION OF HIGHWAYS

**PROPOSED
HIGHWAY PLANS**

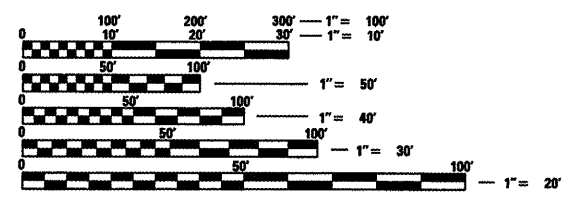
FAP 399, ROUTE IL 8
SECTION 36 R-8
PROJECT: F-HSIP-0399(009)
TAZEWELL COUNTY
C-94-080-02

DESIGN DESIGNATION
1327 (10) Arterial - 6.03 (PCC-20)

- N.P.D.E.S. PERMIT REQUIRED
- QC/QA BITUMINOUS
- QC/QA CONCRETE



TRAFFIC DATA:
ADT = 18700 (2027)
PV = 95%
SU = 3.5%
MU = 1.5%



FULL SIZE PLANS HAVE BEEN PREPARED USING STANDARD ENGINEERING SCALES. REDUCED SIZED PLANS WILL NOT CONFORM TO STANDARD SCALES. IN MAKING MEASUREMENTS ON REDUCED PLANS, THE ABOVE SCALES MAY BE USED.

J.U.L.I.E.
JOINT UTILITY LOCATION INFORMATION FOR EXCAVATION
1-800-892-0123

GROSS LENGTH OF THE SECTION = 6,464.39 FT = 1.22 MILES
NET LENGTH OF THE SECTION = 6,138.79 FT = 1.16 MILES

CONTRACT NO. 68258 CATALOG NO. 030427-06D

STATE OF ILLINOIS
DEPARTMENT OF TRANSPORTATION
DIVISION OF HIGHWAYS

SUBMITTED DEC 10, 2008
[Signature]
DEPUTY DIRECTOR OF HIGHWAYS, REGION ENGINEER

January 30, 2009
[Signature]
ENGINEER OF DESIGN AND ENVIRONMENT

January 30, 2009
[Signature]
DIRECTOR OF HIGHWAYS, CHIEF ENGINEER

**PRINTED BY THE AUTHORITY
OF THE STATE OF ILLINOIS**