

INDEX OF SHEETS

- 1 COVER SHEET
- 2 GENERAL NOTES AND LIST OF STANDARDS
- 3 SUMMARY OF QUANTITIES
- 4-5 TYPICAL SECTIONS
- 6-7 SCHEDULE OF QUANTITIES
- 8 ALIGNMENT, TIES AND BENCHMARKS
- 9-10 PLAN AND PROFILE
- 11-12 TRAFFIC CONTROL
- 13 EROSION CONTROL PLAN
- 14-15 DRAINAGE PLAN AND PROFILE
- 16 RIGHT OF WAY
- 17-21 STRUCTURAL PLANS
- 22-23 EXISTING PLANS
- 24-25 DISTRICT DETAILS
- 26-29 CROSS SECTIONS

STATE OF ILLINOIS
DEPARTMENT OF TRANSPORTATION
DIVISION OF HIGHWAYS
PROPOSED
HIGHWAY PLANS

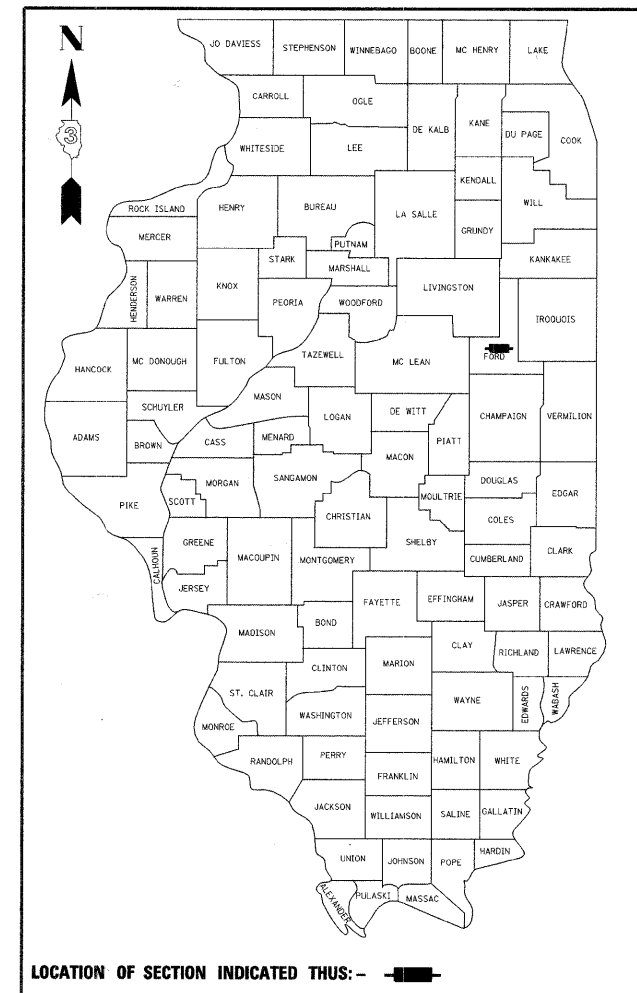
FAP ROUTE 697 (IL RTE 9)
SECTION (17)I
PROJECT F-0697(029)
FORD COUNTY

C - 93 - 022 - 09

REMOVE AND REPLACE EXISTING CULVERT (SN 027-2536) WITH
NEW CULVERT (SN 027-2552) OVER A DRAINAGE DITCH
1.3 MILES EAST OF IL 115

F.A.P. RTE.	SECTION	COUNTY	TOTAL SHEETS	SHEET NO.
697	(17)I	FORD	29	1
FED. ROAD DIST. NO.		ILLINOIS	CONTRACT NO. 66874	

D-93-011-09
P-93-030-07



LOCATION OF SECTION INDICATED THUS: - ■ -

FUNCTION CLASSIFICATION

RURAL MINOR ARTERIAL
2009 ADT = 2270
P.V. = 89.5% S.U. = 4.7% M.U. = 5.8%

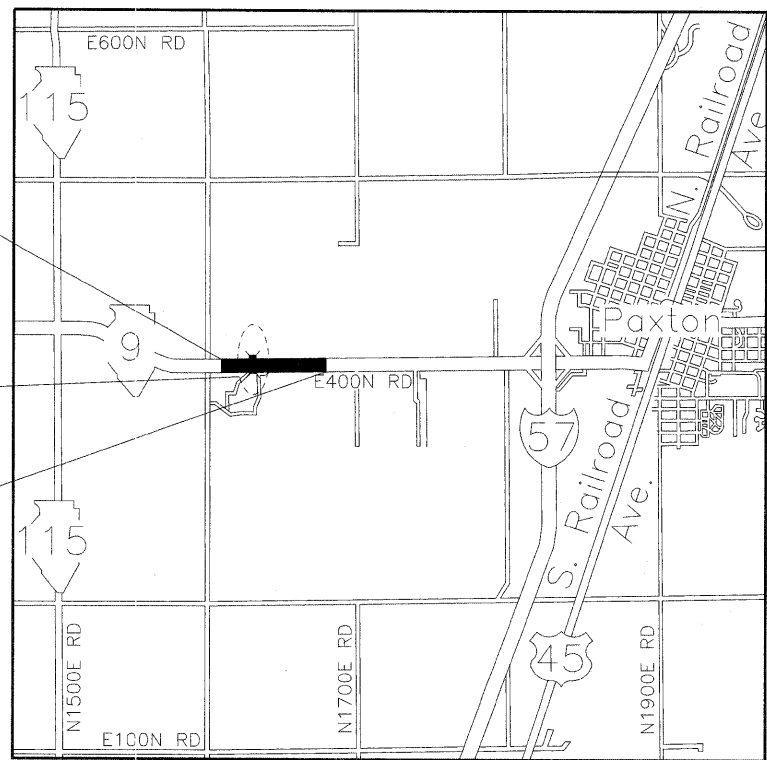
STATE OF ILLINOIS
DEPARTMENT OF TRANSPORTATION
DIVISION OF HIGHWAYS

SUBMITTED _____ 20 _____

George R. Ryan
DEPUTY DIRECTOR OF HIGHWAYS, REGION ENGINEER

January 30, 2009
Charles J. Ingersoll
ENGINEER OF DESIGN AND ENVIRONMENT

January 30, 2009
Christine M. Reed
DIRECTOR OF HIGHWAYS, CHIEF ENGINEER



LOCATION MAP

NOT TO SCALE
 GROSS LENGTH = 700 FT. = 0.133 MI.
 NET LENGTH = 700 FT. = 0.133 MI.

BEGIN IMPROVEMENT
STA. 47+00.00

S.N. 027-2552
STA 50+55.00
14' X 6' CAST-IN-PLACE
CONCRETE BOX CULVERT

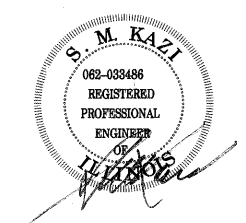
END IMPROVEMENT
STA. 54+00.00



FULL SIZE PLANS HAVE BEEN PREPARED USING STANDARD ENGINEERING SCALES. REDUCED SIZED PLANS WILL NOT CONFORM TO STANDARD SCALES. IN MAKING MEASUREMENTS ON REDUCED PLANS, THE ABOVE SCALES MAY BE USED.

J.U.L.I.E.
JOINT UTILITY LOCATION INFORMATION FOR EXCAVATION
1-800-892-0123
OR 811

DISTRICT 3 NO. (815) 434-6131
PROJECT ENGINEER: JOSEPH KANNEL, P.E.
UNIT CHIEF: MICHELE LINDEMANN, P.E.
TOWNSHIP: PATTON
CONTRACT NO. 66874



Syed M. Kazi
 Licensed Professional Engineer
 State of Illinois
 Lic. No. 062-033486
 Expires: 11-30-2009
 Signature and Seal apply
 to Civil Drawings



Syed M. Kazi
 Licensed Structural Engineer
 State of Illinois
 Lic. No. 081-004047
 Expires: 11-30-2010
 Signature and Seal apply
 to Structural Drawings

DEI **DELTA ENGINEERING, INC.**
 CONSULTING ENGINEERS, CONSTRUCTION MANAGERS, SURVEYORS
 111 West Jackson Blvd., Suite 910 Chicago, IL 60604-2001

PRINTED BY THE AUTHORITY
OF THE STATE OF ILLINOIS

SUMMARY OF QUANTITIES

80% FED.
20% STATE
NEW SN-027-2552

PAY CODE	DESCRIPTION	UNIT	CONSTRUCTION TYPE CODE X028-2A
20100110	TREE REMOVAL (6 TO 15 UNITS DIAMETER)	UNIT	58
20200100	EARTH EXCAVATION	CU YD	1,180
20201200	REMOVAL AND DISPOSAL OF UNSUITABLE MATERIAL	CU YD	43
20400800	FURNISHED EXCAVATION	CU YD	815
20700400	POROUS GRANULAR EMBANKMENT, SPECIAL	CU YD	47
* 25000300	SEEDING, CLASS 3	ACRE	0.60
* 25000400	NITROGEN FERTILIZER NUTRIENTS	POUND	53
* 25000500	PHOSPHORUS FERTILIZER NUTRIENTS	POUND	53
* 25000600	POTASSIUM FERTILIZER NUTRIENTS	POUND	53
25100630	EROSION CONTROL BLANKET	SQ YD	2,970
28000250	TEMPORARY EROSION CONTROL SEEDING	POUND	60
28000300	TEMPORARY DITCH CHECKS	EACH	10
28000400	PERIMETER EROSION BARRIER	FOOT	42
28000500	INLET AND PIPE PROTECTION	EACH	2
28100107	STONE RIPRAP, CLASS A4	SQ YD	105
28200200	FILTER FABRIC	SQ YD	105
31100910	SUBBASE GRANULAR MATERIAL, TYPE A 12"	SQ YD	144
35501326	HOT-MIX ASPHALT BASE COURSE, 10 1/2"	SQ YD	130
40200800	AGGREGATE SURFACE COURSE, TYPE B	TON	48
40300100	BITUMINOUS MATERIAL (PRIME COAT)	GALLON	239
40600300	AGGREGATE (PRIME COAT)	TON	0.20
40600400	MIXTURE FOR CRACKS, JOINTS AND FLANGWAYS	TON	1
40600525	LEVELING BINDER (HAND METHOD), N50	TON	32.60
40600982	HOT-MIX ASPHALT SURFACE REMOVAL - BUTT JOINT	SQ YD	320
40603310	HOT-MIX ASPHALT SURFACE COURSE, MIX "C", N50	TON	252
44000100	PAVEMENT REMOVAL	SQ YD	122
48102100	AGGREGATE WEDGE SHOULDER, TYPE B	TON	31
48203029	HOT-MIX ASPHALT SHOULDERS, 8"	SQ YD	801
50100100	REMOVAL OF EXISTING STRUCTURES	EACH	1
50105200	REMOVE EXISTING CULVERTS	EACH	2
50200100	STRUCTURE EXCAVATION	CU YD	639
50800105	REINFORCEMENT BARS	POUND	15,530
50800515	BAR SPLICERS	EACH	72
51205200	TEMPORARY SHEET PILING	SQ FT	952
51500100	NAME PLATES	EACH	1
54003000	CONCRETE BOX CULVERTS	CU YD	65.1
54200220	PIPE CULVERTS, CLASS D, TYPE 1 15"	FOOT	56
54213450	END SECTIONS 15"	EACH	4
* 63000000	STEEL PLATE BEAM GUARDRAIL, TYPE A	FOOT	562.50

PLAN SURVEYED BY DATE
 PLOTTED BY DATE
 CHECKED BY DATE
 RT. OF WAY CHECKED BY DATE
 CADD FILE NAME

PROFILE SURVEYED BY DATE
 PLOTTED BY DATE
 CHECKED BY DATE
 STRUCTURE NOTATIONS OK'D BY DATE

80% FED.
20% STATE
NEW SN-027-2552

PAY CODE	DESCRIPTION	UNIT	CONSTRUCTION TYPE CODE X028-2A
* 63000025	STEEL PLATE BEAM GUARDRAIL, ATTACHED TO STRUCTURES	FOOT	50
* 63100167	TRAFFIC BARRIER TERMINAL, TYPE 1 (SPECIAL) TANGENT	EACH	4
63200310	GUARDRAIL REMOVAL	FOOT	376
66411900	TEMPORARY FENCE	FOOT	357
* 66500105	WOVEN WIRE FENCE, 4'	FOOT	357
66502300	WOVEN WIRE FENCE REMOVAL	FOOT	295
66600105	FURNISHING AND ERECTING RIGHT-OF-WAY MARKERS	EACH	12
67000400	ENGINEER'S FIELD OFFICE, TYPE A	CAL MO	6
67100100	MOBILIZATION	L SUM	1
70100450	TRAFFIC CONTROL AND PROTECTION, STANDARD 701201	L SUM	1
70100460	TRAFFIC CONTROL AND PROTECTION, STANDARD 701306	L SUM	1
70100405	TRAFFIC CONTROL AND PROTECTION, STANDARD 701321	EACH	1
70100500	TRAFFIC CONTROL AND PROTECTION, STANDARD 701326	L SUM	1
70103815	TRAFFIC CONTROL SURVEILLANCE	CAL DA	11
70106500	TEMPORARY BRIDGE TRAFFIC SIGNALS	EACH	1
70300100	SHORT-TERM PAVEMENT MARKING	FOOT	2,044
70300220	TEMPORARY PAVEMENT MARKING - LINE 4"	FOOT	1,760
70300240	TEMPORARY PAVEMENT MARKING - LINE 6"	FOOT	220
70301000	WORK ZONE PAVEMENT MARKING REMOVAL	SQ FT	722
* 78001110	PAINT PAVEMENT MARKING - LINE 4"	FOOT	1,760
* 78001130	PAINT PAVEMENT MARKING - LINE 6"	FOOT	220
* 78200405	GUARDRAIL MARKERS	EACH	33
* 78201000	TERMINAL MARKER - DIRECT APPLIED	EACH	4

* SPECIALTY ITEM

FILE NAME =	USER NAME = carpenter.dj	DESIGNED DB	REVISED -
es:\pwwork\pwwork\carpenter.dj\des77953\827-2552-03summary.dgn		DRAWN NS/RM	REVISED -
	PLOT SCALE = 2.1176 "/ IN.	CHECKED AS	REVISED -
	PLOT DATE = Dec 30, 2008 - 08:58:57 AM	DATE DECEMBER 2008	REVISED -

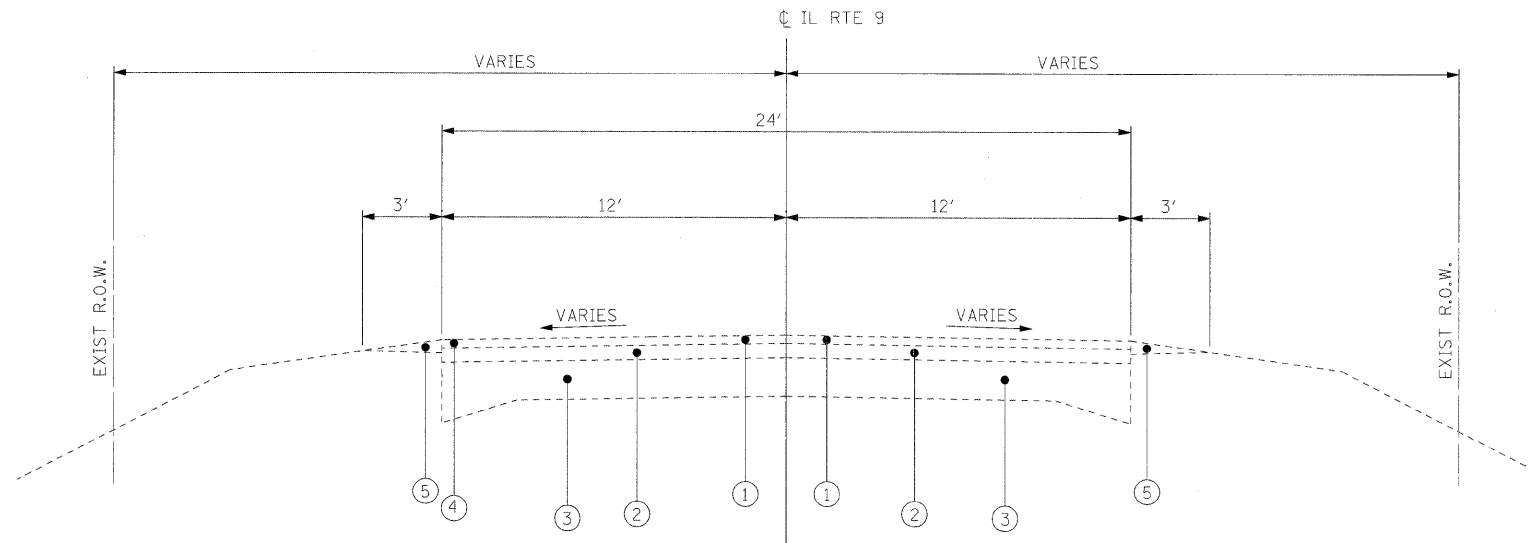
STATE OF ILLINOIS
DEPARTMENT OF TRANSPORTATION

SUMMARY OF QUANTITIES

F.A.P. RTE. 697	SECTION (17)1	COUNTY FORD	TOTAL SHEETS 29	SHEET NO. 3
SCALE: NONE		SHEET NO. 1 OF SHEETS		STA. TO STA.
FED. ROAD DIST. NO. ILLINOIS FED. AID PROJECT CONTRACT NO. 66874				

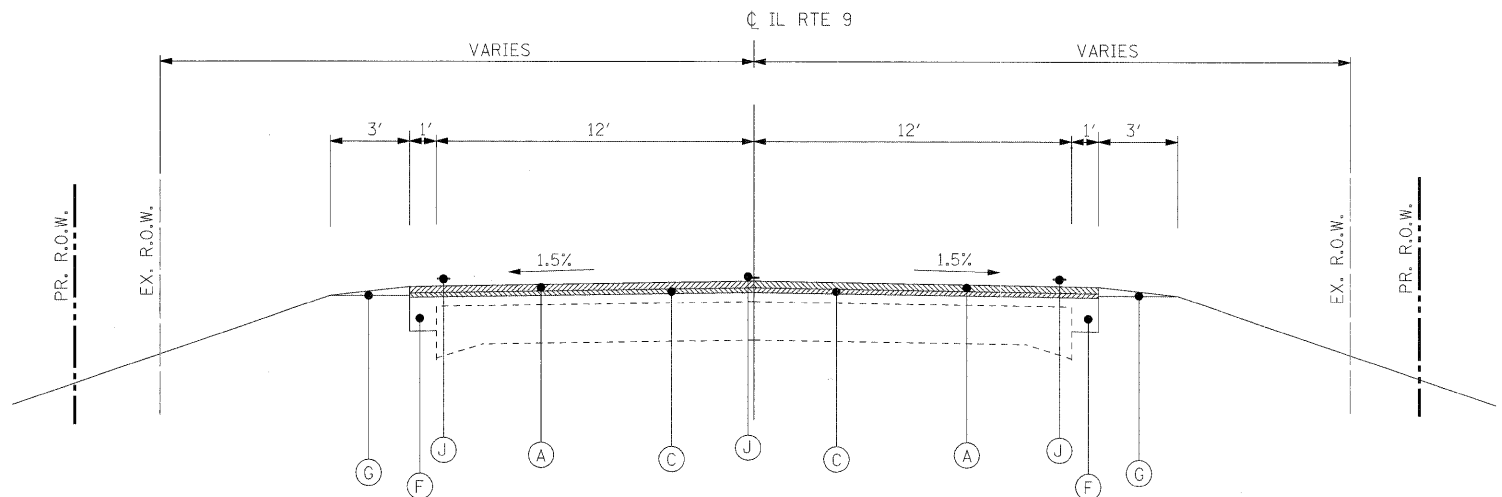
DATE: _____ BY: _____
 SURVEYED: _____
 ALIGNED: _____
 RT. OF WAY CHECKED: _____
 ROAD FILE NAME: _____
 PLAN NO. _____

DATE: _____ BY: _____
 SURVEYED: _____
 GRADES CHECKED: _____
 I.S.M. NOTED: _____
 STRUCTURE NOTATIONS CHK'D: _____
 PROFILE NO. _____



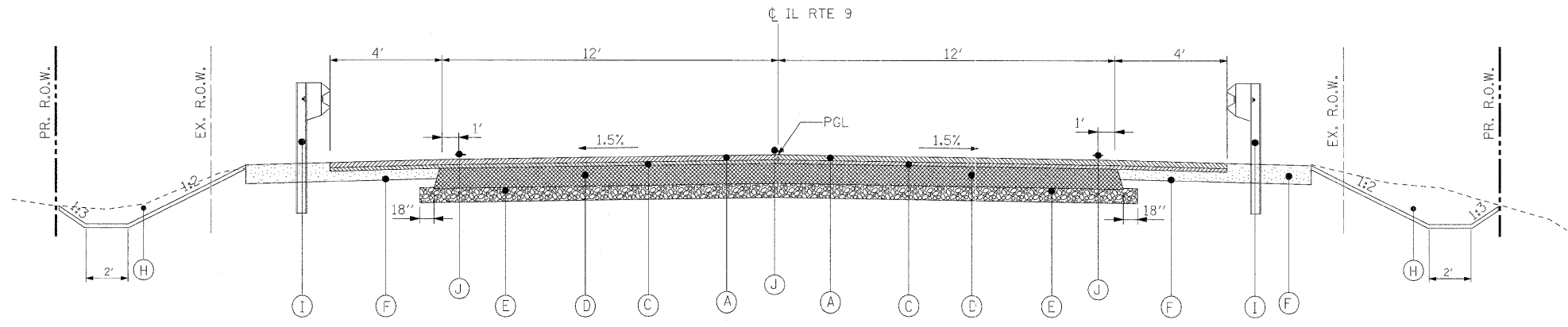
EXISTING ROADWAY TYPICAL SECTION

NTS
 FROM STA 46+10.00 TO STA 54+90.00



PROPOSED ROADWAY TYPICAL SECTION

NTS
 FROM STA 47+00.00 TO STA 50+32.19
 FROM STA 50+77.82 TO STA 54+00.00



PROPOSED ROADWAY TYPICAL SECTION (FULL DEPTH)

NTS
 FROM STA 50+32.19 TO STA 50+47.17
 FROM STA 50+62.83 TO STA 54+77.82

BITUMINOUS MIXTURE REQUIREMENTS

PAY ITEM	HMA LEVEL BINDER	HMA SURFACE	HMA BASE COURSE	HMA SHOULDERS
PG GRADE	PG64-22	PG64-22	PG64-22	PG64-22
MAX. % RAP ALLOWABLE **	25%	15%	25%	25%
DESIGN AIR VOIDS	4.0% @ N50	4.0% @ N50	4.0% @ N50	4.0% @ N50
MIXTURE COMPOSITION	IL 9.5	IL 12.5 OR IL 9.5	IL 19.0	IL 19.0
FRICTION AGGREGATE		MIXTURE C		
DENSITY TEST METHOD	SATISFACTION OF THE ENGINEER	CORES	CORES	CORES*

* MATERIAL SHALL BE COMPACTED TO 93.0 - 97.4 PERCENT OF THE MAXIMUM THEORETICAL DENSITY, EXCEPT THAT WHEN PLACED AS FIRST LIFT ON AN UNIMPROVED SUBGRADE THE MINIMUM PERCENT COMPACTION SHALL BE 92.0 PERCENT. THE MAXIMUM THEORETICAL DENSITY SHALL BE DETERMINED FROM THE MOVING AVERAGE AS SPECIFIED IN THE QC/QA SPECIFICATION.

** WHEN MORE THAN 20% RAP IS USED, A SOFTER ASPHALT BINDER (PG58-22) MAY BE REQUIRED AS DETERMINED BY THE ENGINEER.

LEGEND:

- EXISTING**
- ① EXISTING HOT-MIX ASPHALT SURFACE CSE, 1 1/2"
 - ② EXISTING HOT MIX ASPHALT OVERLAY
 - ③ EXISTING PAVEMENT, ± 12"
 - ④ EXISTING HMA SHOULDER
 - ⑤ EXISTING AGGREGATE SHOULDER WEDGE (TYP.)
- PROPOSED**
- (A) PROPOSED HOT-MIX ASPHALT SURFACE COURSE, MIX C, N50, 1 1/2"
 - (C) PROPOSED LEVELING BINDER, N50, 3/4"
 - (D) PROPOSED HOT MIX ASPHALT BASE COURSE 10 1/2"
 - (E) PROPOSED SUBBASE GRANULAR MATERIAL, TYPE A, 12"
 - (F) PROPOSED HOT-MIX ASPHALT SHOULDERS, 8"
 - (G) PROPOSED AGGREGATE SHOULDER WEDGE
 - (H) PROPOSED EARTH EXCAVATION
 - (I) PROPOSED STEEL PLATE BEAM GUARD RAIL
 - (J) PAVEMENT MARKING

NOTE:

1. SEE PLAN AND PROFILE SHEETS FOR HMA SHOULDER STABILIZATION LOCATIONS.

FILE NAME = #FILE#	USER NAME = #USER#	DESIGNED DB	REVISED -	STATE OF ILLINOIS DEPARTMENT OF TRANSPORTATION	TYPICAL SECTIONS SN 027-2552 SHEET 1 OF 2		F.A.P. RTE. 697	SECTION (17)I	COUNTY FORD	TOTAL SHEETS 29	SHEET NO. 4	
	PLOT SCALE = #SCALE#	DRAWN NS/RM	REVISED -		SCALE: NTS	SHEET NO. 1 OF SHEETS	STA. TO STA.	CONTRACT NO. 66874				
	PLOT DATE = #DATE#	CHECKED AS	REVISED -									
		DATE DECEMBER 2008	REVISED -									

DATE: _____ BY: _____
 SURVEYED _____
 ALIGNED _____
 RT. OF WAY CHECKED _____
 PLAN NOTE BOOK NO. _____
 FILE NAME: _____

DATE: _____ BY: _____
 SURVEYED _____
 GRADES CHECKED _____
 PROFILE NOTE BOOK NO. _____
 STRUCTURE NOTATIONS CHKD _____

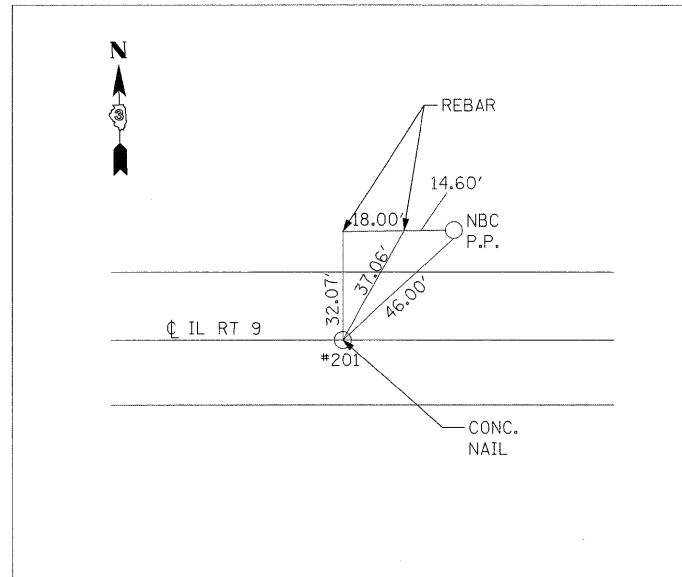
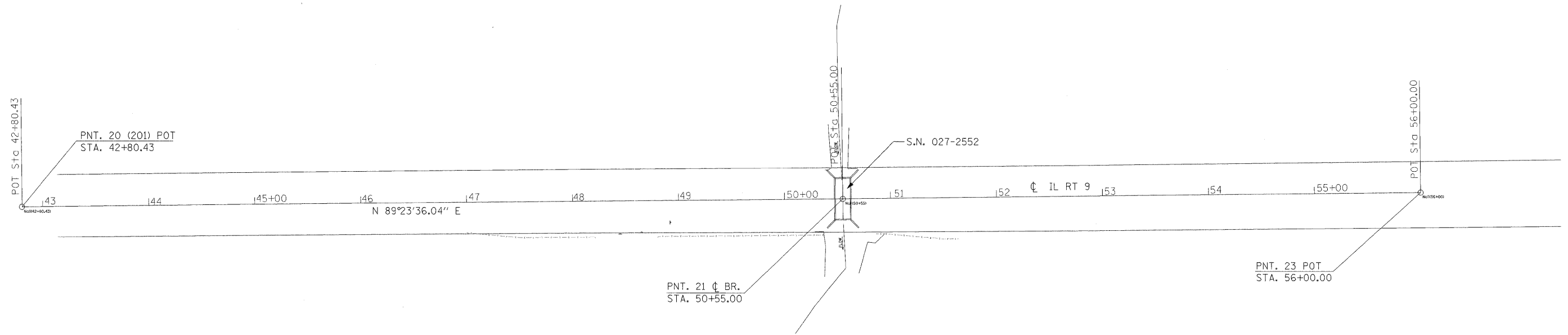
PAVEMENT SCHEDULE																	
LOCATION			SIDE	SUBBASE GRANULAR MATERIAL TY A, 12"	HMA BASE COURSE 10 1/2"	HOT-MIX ASPHALT SHOULDERS 8"	HOT-MIX ASPHALT SURFACE REMOVAL BUTT JOINT	PAVEMENT REMOVAL	AGGREGATE SURFACE COURSE TYPE B	AGGREGATE WEDGE SHOULDER, TYPE B	HOT-MIX ASPHALT SURFACE CSE MIX "C", N50	LEVELING BINDER (HAND METHOD), N50	BITUMINOUS MATERIAL (PRIME COAT)	MIXTURE FOR CRACKS, JOINTS AND FLANGEWAYS	AGGREGATE PRIME COAT		
STATION	TO	STATION	LT/RT	(SQ YD)	(SQ YD)	(SQ YD)	(SQ YD)	(SQ YD)	(TON)	(TON)	(TON)	(TON)	(GAL)	(TON)	(TON)		
46+10.00	TO	54+90.00									207		239	1			
46+10.00	TO	47+00.00				160											
46+10.00	TO	48+40.57	RT							2	1.10						
46+10.00	TO	48+45.37	LT							2	1.20						
47+00.00	TO	50+32.19															
47+00.00	TO	47+85.00	LT							10							
47+00.00	TO	48+41.80	RT							16							
47+00.00	TO	48+45.37	RT			17											
47+00.00	TO	48+50.57	RT			18											
FIELD ENTRANCE AT STA. 48+12				LT				38									
48+36.00	TO	48+53.09	LT						2								
48+40.57	TO	52+64.90	RT							17	8.30						
48+45.37	TO	53+41.67	LT							20	9.70						
48+45.37	TO	53+41.67	RT			405											
48+50.57	TO	52+64.90	RT			338											
FIELD ENTRANCE AT STA. 48+56				RT				10									
49+32.00	TO	49+65.00															
50+32.19	TO	50+77.82		144	130		122				7.20				0.20		
50+77.82	TO	54+00.00															
52+50.90	TO	54+00.00	RT							16							
52+64.90	TO	54+00.00	RT			16											
52+64.90	TO	54+90.00	RT							2	4.40						
53+33.67	TO	54+00.00	LT							7							
53+41.67	TO	54+00.00	RT			7											
53+41.67	TO	54+90.00	LT							2	0.70						
54+00.00	TO	54+90.00					160										
TOTAL				144	130	801	320	122	48	51	252	32.60	239	1			

SEEDING AND EROSION CONTROL SCHEDULE													
LOCATION			SIDE	SEEDING CLASS 3	NITROGEN FERTILIZER NUTRIENTS	PHOSPHORUS FERTILIZER NUTRIENTS	POTASSIUM FERTILIZER NUTRIENTS	TEMPORARY EROSION CONTROL SEEDING	EROSION CONTROL BLANKET	PERIMETER EROSION BARRIER	INLET AND PIPE PROTECTION	TEMPORARY DITCH CHECKS	
STATION	TO	STATION	LT/RT	(ACRE)	(POUND)	(POUND)	(POUND)	(POUND)	(SQ YD)	(FT)	(EACH)	(EACH)	
47+00.00	TO	54+00.00	LT	0.30	27	27	27	30	1461				
47+00.00	TO	54+00.00	RT	0.30	26	26	26	30	1404				
47+85.00			LT									1	
47+90.00			LT								1		
48+30.00			RT									1	
48+40.00			RT								1		
49+50.00			RT									1	
49+50.00			LT									1	
50+40.59			RT						44				
50+40.66			LT						61				
50+48.00			RT									1	
50+48.00			LT									1	
50+62.00			RT									1	
50+62.00			LT									1	
51+75.00			RT									1	
51+75.00			LT									1	
NE OF CULVERT			LT							13			
SE OF CULVERT			LT							8			
NW OF CULVERT			RT							13			
SW OF CULVERT			RT							8			
TOTAL				0.60	53	53	53	60	2,970	42	2	10	

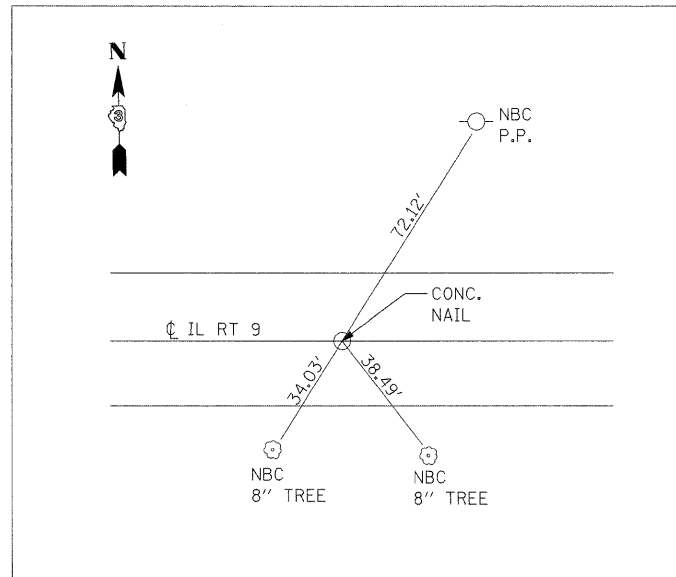
DRAINAGE STRUCTURE SCHEDULE								
LOCATION			SIDE	REMOVE EXISTING CULVERTS	PIPE CULVERTS CLASS D, TY 1, 15"	END SECTION, 15"	STONE RIPRAP CLASS A4	FILTER FABRIC
STATION	TO	STATION	LT/RT	(EACH)	(FT)	(EACH)	(SQ YD)	(SQ YD)
47+95.00	TO	48+29.00	LT		34			
47+95.00			LT			1		
48+29.00			LT			1		
48+38.95	TO	48+70.35	RT	1				
48+44.00			RT			1		
48+44.00	TO	48+66.00	RT		22			
48+66.00			RT			1		
49+27.12	TO	49+67.72	LT	1				
50+40.59	TO	50+69.33	RT				44	44
50+40.66	TO	50+69.42	LT				61	61
TOTAL				2	56	4	105	105

DATE	
BY	
SURVEYED	
ALIGNED	
NOTED	
GRADES	
CHECKED	
STRUCTURE	
NOTATIONS	
CHKD	
PLAN	
NOTE BOOK	
NO.	

DATE	
BY	
SURVEYED	
ALIGNED	
NOTED	
GRADES	
CHECKED	
STRUCTURE	
NOTATIONS	
CHKD	
PROFILE	
NOTE BOOK	
NO.	



PNT. #20 POT (N.T.S)
STA. 42+80.43



PNT. #23 POT (N.T.S)
STA. 56+00

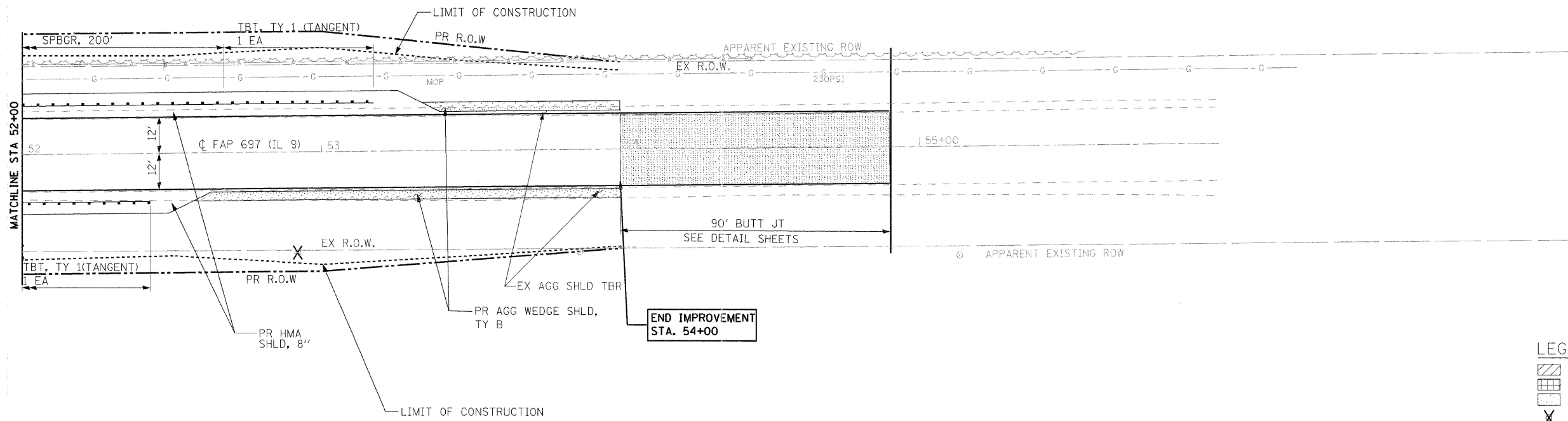
BENCHMARK #1
RAILROAD SPIKE IN POWER POLE NORTH SIDE OF RT. 9
NORTH OF WEST END OF GUARDRAIL.
STA. 50+03, 32' LT. ELEV.= 747.16

BENCHMARK #2
RAILROAD SPIKE IN POWER POLE NORTH SIDE
OF RT. 9, 230'± WEST OF BOX CULVERT.
STA. 47+91, 30' LT. ELEV.= 747.18

FILE NAME =	USER NAME = #USER#	DESIGNED DB	REVISED -	STATE OF ILLINOIS DEPARTMENT OF TRANSPORTATION	ALIGNMENT, TIES AND BENCHMARKS	F.A.P. RTE.	SECTION	COUNTY	TOTAL SHEETS	SHEET NO.
#FILE#	DRAWN NS/RM	REVISED -	697			(17)I	FORD	29	8	
PLOT SCALE = #SCALE#	CHECKED AS	REVISED -	CONTRACT NO. 66874							
PLOT DATE = #DATE#	DATE DECEMBER 2008	REVISED -	FED. ROAD DIST. NO. ILLINOIS FED. AID PROJECT							
				SCALE: 1"=20'		SHEET NO. 1 OF SHEETS		STA. TO STA.		

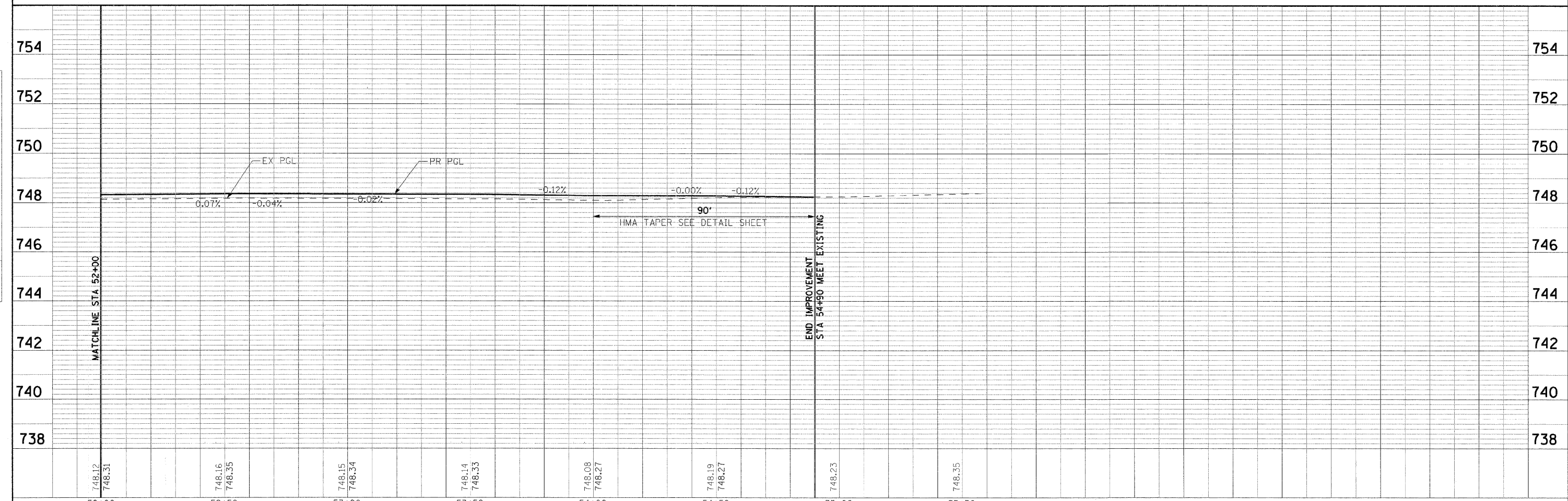
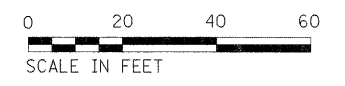
PLAN SURVEYED _____ BY _____ DATE _____
 ALIGNED _____ CHECKED _____
 RT. OF WAY CHECKED _____
 P.O.D. FILE NAME _____
 NOTE BOOK _____
 NO. _____

PROFILE SURVEYED _____ BY _____ DATE _____
 GRADES CHECKED _____
 I.S.M. NOTED _____
 STRUCTURE NOTATIONS C/R/D _____
 NOTE BOOK _____
 NO. _____



LEGEND:

 PAVEMENT REMOVAL FULL DEPTH
 BUTT JOINT REMOVAL
 PR AGG WEDGE SHLD, TYPE B
 TREE REMOVAL

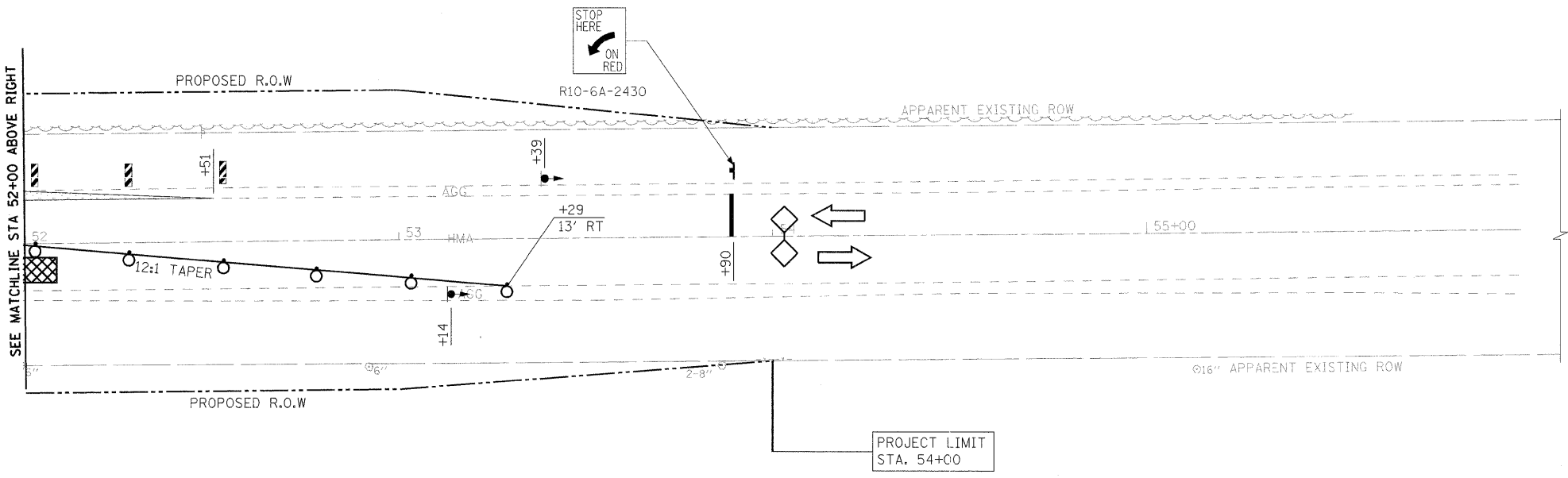
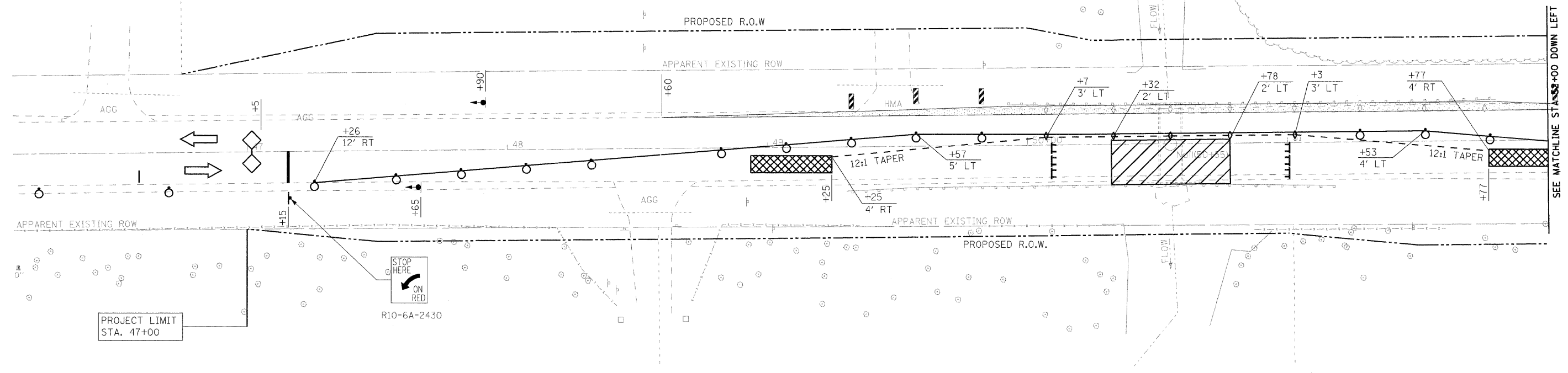


FILE NAME - #FILE#	USER NAME = #USER#	DESIGNED DB	REVISED -	STATE OF ILLINOIS DEPARTMENT OF TRANSPORTATION	PLAN AND PROFILE SN 027-2552 SHEET 2 OF 2	F.A.P. RTE. 697	SECTION (17)I	COUNTY FORD	TOTAL SHEETS 29	SHEET NO. 10	
	PLOT SCALE = #SCALE#	DRAWN NS/RM	REVISED -			SCALE: 1"=20'	SHEET NO. 1 OF 2 SHEETS	STA. 52+00 TO STA. 54+90	CONTRACT NO. 66874		
	PLOT DATE = #DATE#	CHECKED AS	REVISED -			FED. ROAD DIST. NO. ILLINOIS FED. AID PROJECT					
		DATE DECEMBER 2008	REVISED -								



PLAN	SURVEYED	DATE
	ALIGNED	
	RT. OF WAY CHECKED	
	NO. OF WAY CHECKED	
	NO. OF WAY CHECKED	
	NO. OF WAY CHECKED	
	NO. OF WAY CHECKED	
	NO. OF WAY CHECKED	
	NO. OF WAY CHECKED	
	NO. OF WAY CHECKED	

PROFILE	SURVEYED	DATE
	GRADES CHECKED	
	B.M. NOTED	
	STRUCTURE NOTATIONS CHKD	
	NO. OF WAY CHECKED	
	NO. OF WAY CHECKED	
	NO. OF WAY CHECKED	
	NO. OF WAY CHECKED	
	NO. OF WAY CHECKED	
	NO. OF WAY CHECKED	



LEGEND:

- TEMPORARY HMA BASE COURSE WIDENING 8"
- DRUM WITH STEADY BURN LIGHT
- TRAFFIC SIGNALS WITH BACKPLATE
- MICROWAVE DETECTOR SIGN
- TYPE III BARRICADE WITH FLASHING LIGHTS
- TYPE "C" BIDIRECTIONAL REFLECTOR
- DOUBLE VERTICAL PANEL (SEE DETAIL)
- TEMPORARY CONCRETE BARRIER
- IMPACT ATTENUATORS, TEMPORARY (NON-REDIRECTIVE) TEST LEVEL 3
- WORK AREA

NOTES:

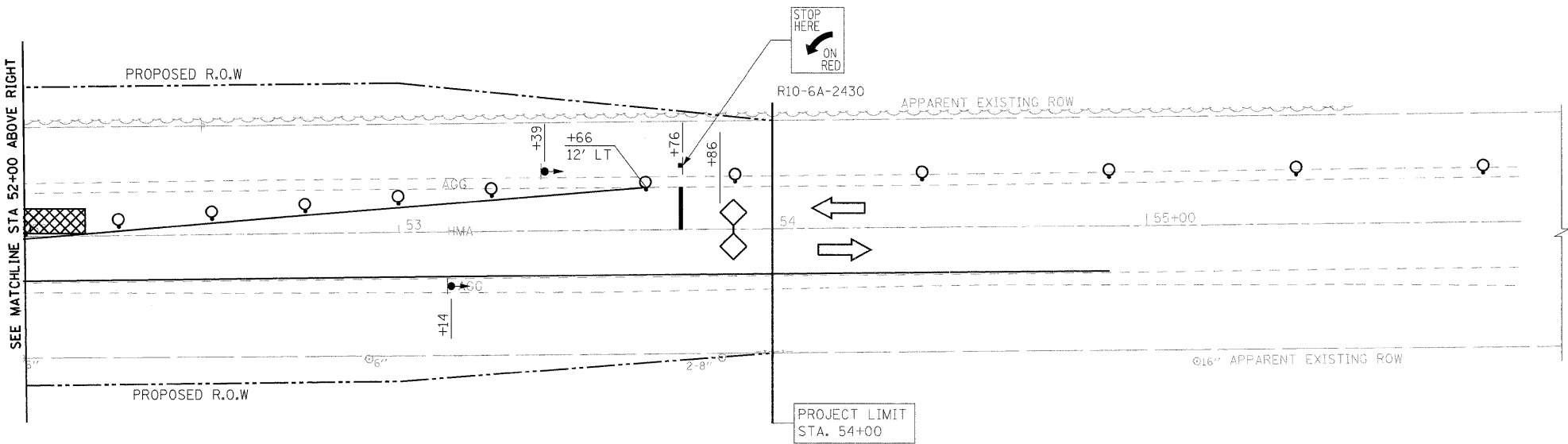
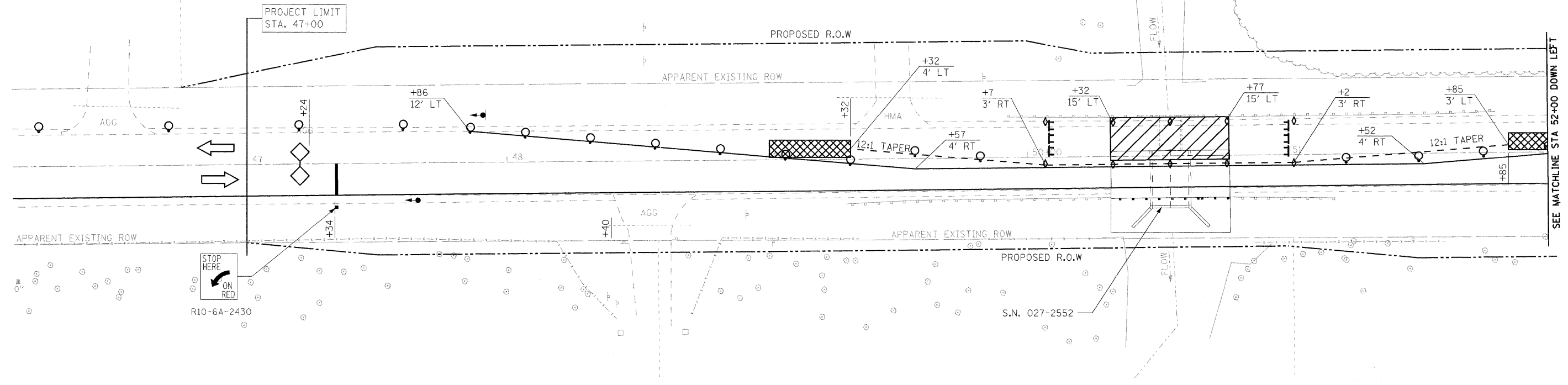
1. SEE STANDARD 701321 FOR DETAILS.
2. SEE STRUCTURAL SHEETS FOR STAGES OF CONSTRUCTION.
3. TEMPORARY PAVEMENT FOR STAGE 1 TRAFFIC CONTROL WILL BE CONSTRUCTED IN PRE-STAGE.

FILE NAME =	USER NAME = #USER#	DESIGNED DB	REVISED -	STATE OF ILLINOIS DEPARTMENT OF TRANSPORTATION	STAGE I TRAFFIC CONTROL			F.A.P. RTE.	SECTION	COUNTY	TOTAL SHEETS	SHEET NO.
#FILE#		DRAWN NS/RM	REVISED -		SCALE: 1"=20'	SHEET NO. 1 OF 2 SHEETS	STA. 46+10 TO STA. 54+90	697	(17)I	FORD	29	11
		CHECKED AS	REVISED -		CONTRACT NO. 66874							
		DATE DECEMBER 2008	REVISED -		FED. ROAD DIST. NO. ILLINOIS FED. AID PROJECT							



DATE	
BY	
SURVEYED	
ALIGNED	
CHECKED	
RT. OF WAY CHECKED	
POD FILE NAME	
NO.	
PLAN	
NOTE BOOK	
NO.	

DATE	
BY	
SURVEYED	
GRADES CHECKED	
BEAM NOTED	
STRUCTURE NOTATIONS OK'D	
NO.	
PROFILE	
NOTE BOOK	
NO.	



LEGEND:

- TEMPORARY HMA BASE COURSE WIDENING 8"
- DRUM WITH STEADY BURN LIGHT
- TRAFFIC SIGNALS WITH BACKPLATE
- MICROWAVE DETECTOR
- SIGN
- TYPE III BARRICADE WITH FLASHING LIGHTS
- TYPE "C" BIDIRECTIONAL REFLECTOR
- DOUBLE VERTICAL PANEL (SEE DETAIL)
- TEMPORARY CONCRETE BARRIER
- IMPACT ATTENUATORS, TEMPORARY (NON-REDIRECTIVE) TEST LEVEL 3
- WORK AREA

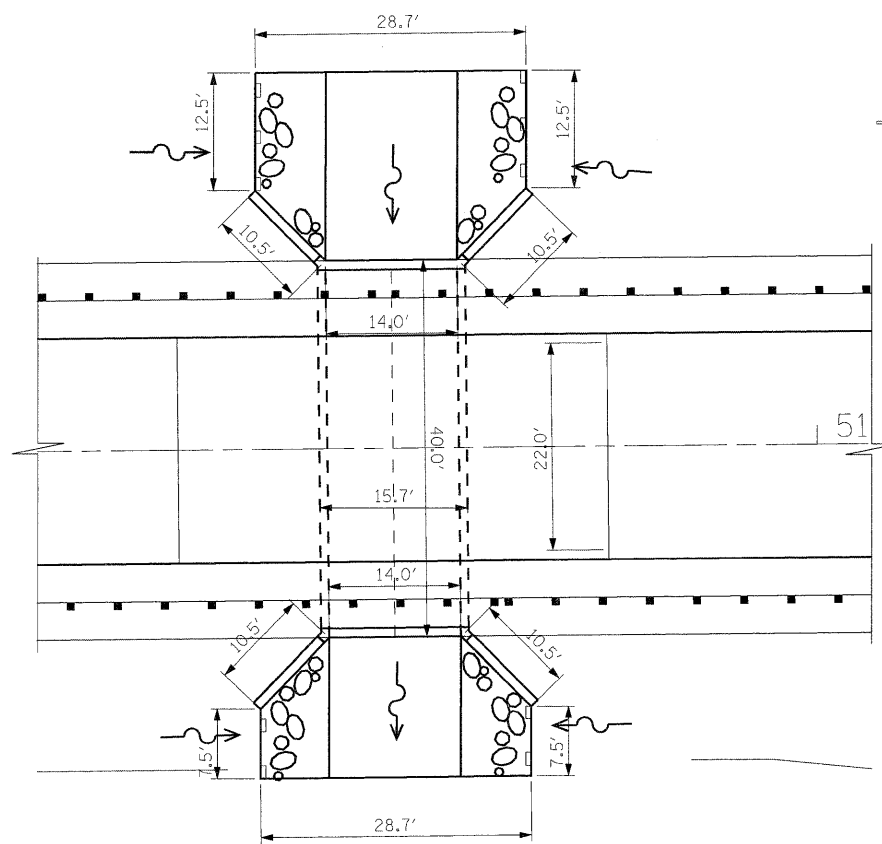
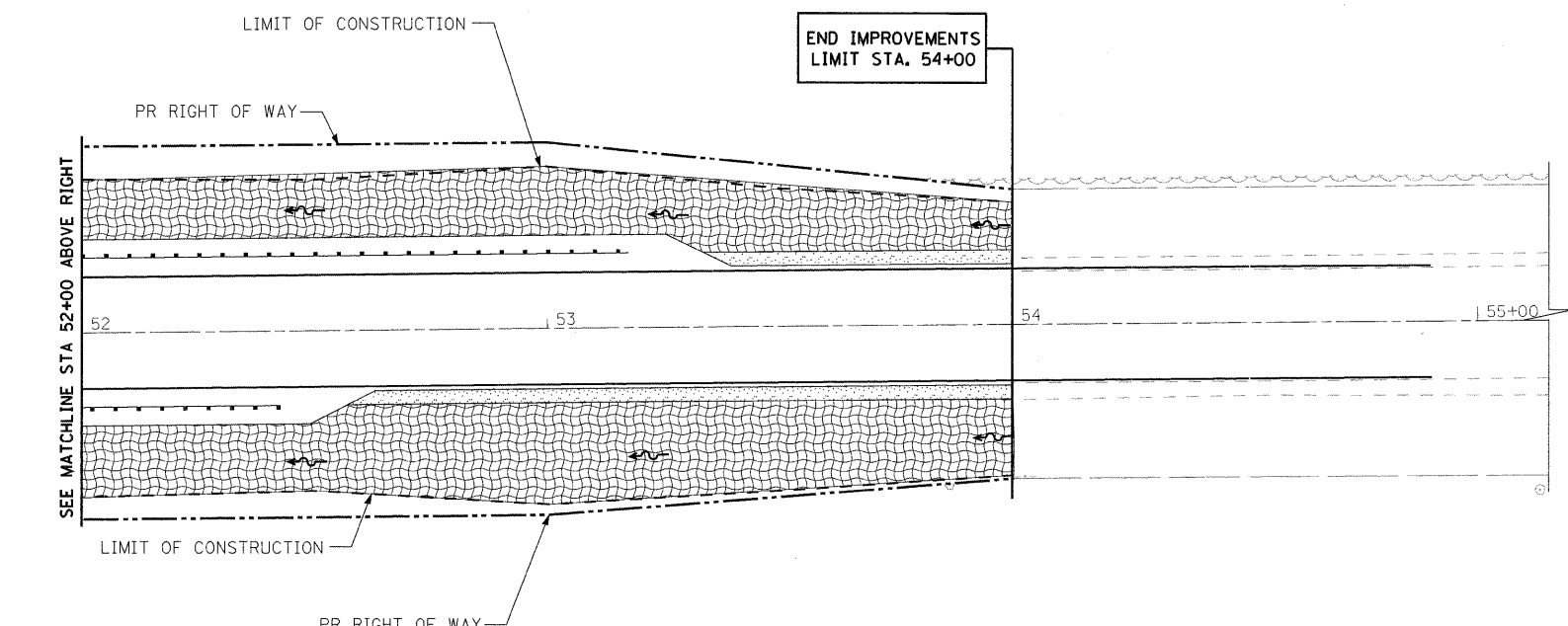
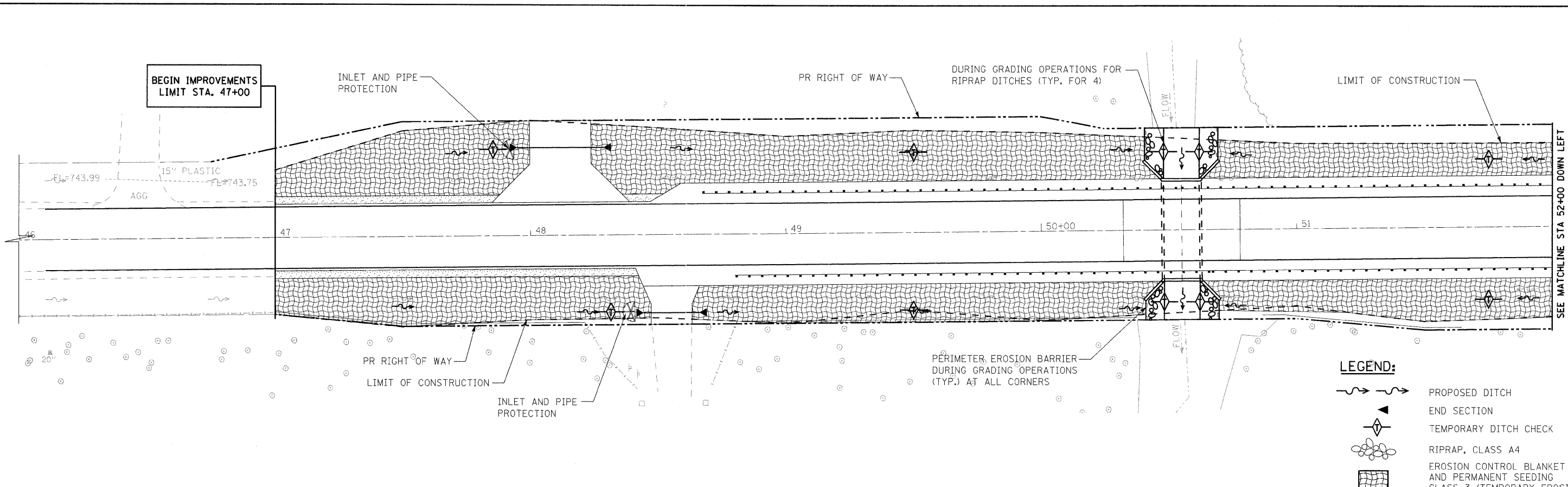
NOTES:

1. SEE STANDARD 701321 FOR DETAILS.
2. SEE STRUCTURAL SHEETS FOR STAGING PLAN.
3. THE ENTRANCE AT STATION 49+49 TO BE RELOCATED PRIOR TO SWITCHING TO STAGE II TRAFFIC CONTROL.

FILE NAME =	USER NAME = #USER#	DESIGNED DB	REVISED -	STATE OF ILLINOIS DEPARTMENT OF TRANSPORTATION	STAGE II TRAFFIC CONTROL		F.A.P. RTE.	SECTION	COUNTY	TOTAL SHEETS	SHEET NO.	
#FILE#		DRAWN NS/RM	REVISED -		SCALE: 1"=20'	SHEET NO. 2 OF 2 SHEETS	STA. 46+10 TO STA. 54+90	697	(171)	FORD	29	12
		CHECKED AS	REVISED -		CONTRACT NO. 66874							
		DATE DECEMBER 2008	REVISED -		FED. ROAD DIST. NO. ILLINOIS FED. AID PROJECT							

PLAN	BY	DATE
SURVEYED		
ALIGNED		
ASSEMBLED		
NOTED		
NO.		

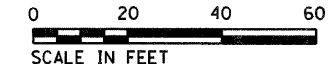
PROFILE	BY	DATE
SURVEYED		
ALIGNED		
ASSEMBLED		
NOTED		
NO.		



- LEGEND:**
- PROPOSED DITCH
 - END SECTION
 - TEMPORARY DITCH CHECK
 - RIPRAP, CLASS A4
 - EROSION CONTROL BLANKET AND PERMANENT SEEDING CLASS 3 (TEMPORARY EROSION CONTROL SEEDING AS NEEDED)
 - INLET AND PIPE PROTECTION
 - RIPRAP
 - PERIMETER EROSION BARRIER

EROSION CONTROL PLAN

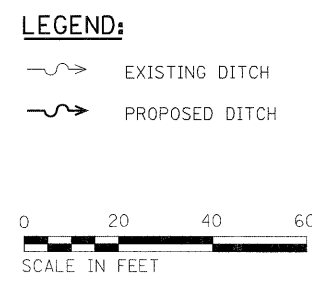
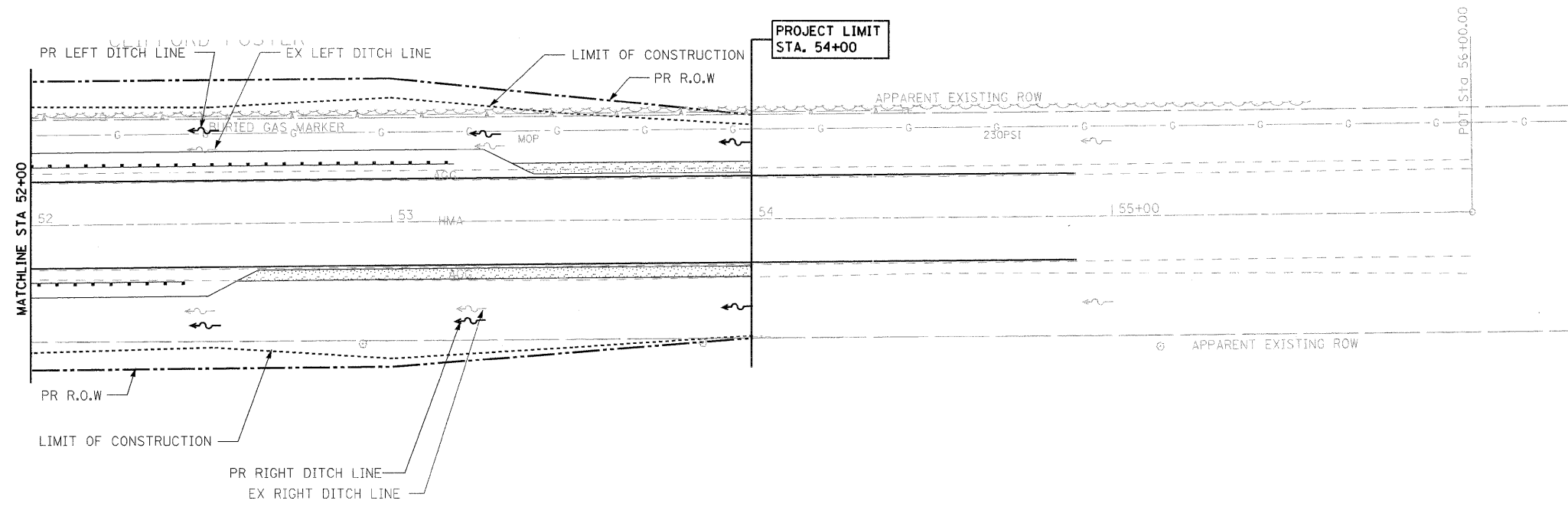
RIPRAP LAYOUT PLAN
N.T.S.



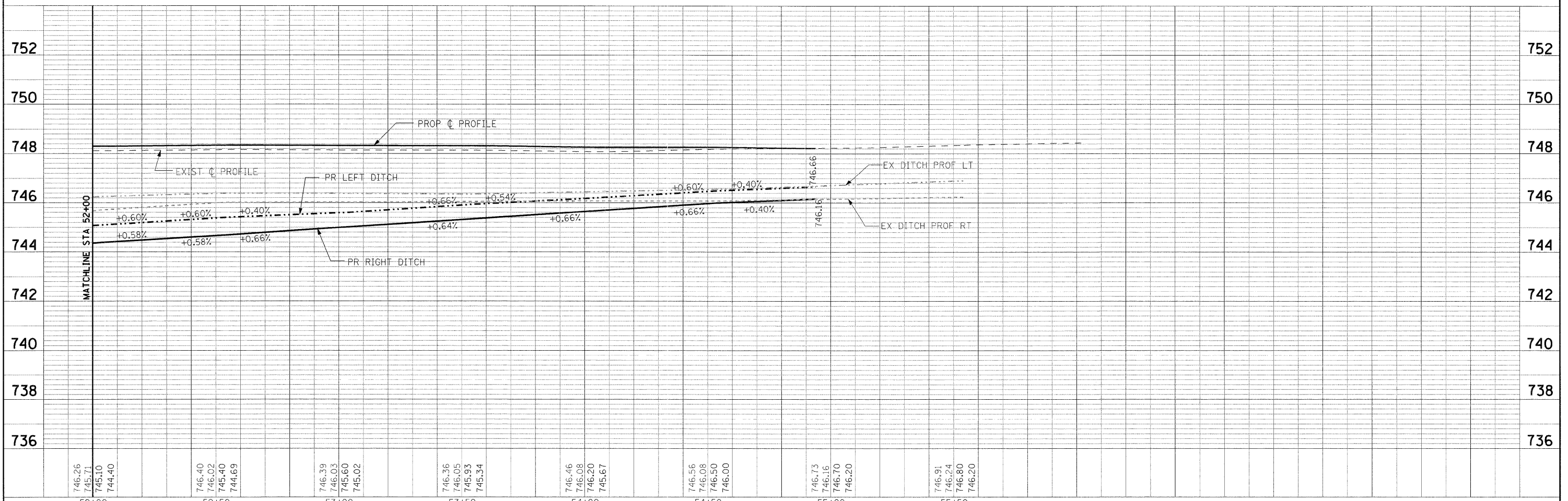
FILE NAME = #FILEL#	USER NAME = #USER#	DESIGNED DB	REVISED -	STATE OF ILLINOIS DEPARTMENT OF TRANSPORTATION	EROSION CONTROL PLAN SN 027-2552		F.A.P. RTE. 697	SECTION (17)1	COUNTY FORD	TOTAL SHEETS 29	SHEET NO. 13	
	PLOT SCALE = #SCALE#	DRAWN RM RM	REVISED -		SCALE: 1"=20'	SHEET NO. 1 OF SHEETS	STA. 46+10 TO STA. 52+00	CONTRACT NO. 66874				
	PLOT DATE = #DATE#	CHECKED AS	REVISED -					FED. ROAD DIST. NO. ILLINOIS FED. AID PROJECT				
		DATE DECEMBER 2008	REVISED -									



PLAN	SURVEYED	BY	DATE
	ALIGNMENT CHECKED		
	RT. OF WAY CHECKED		
	PAV. FILE MADE		
	NOTE BOOK NO.		



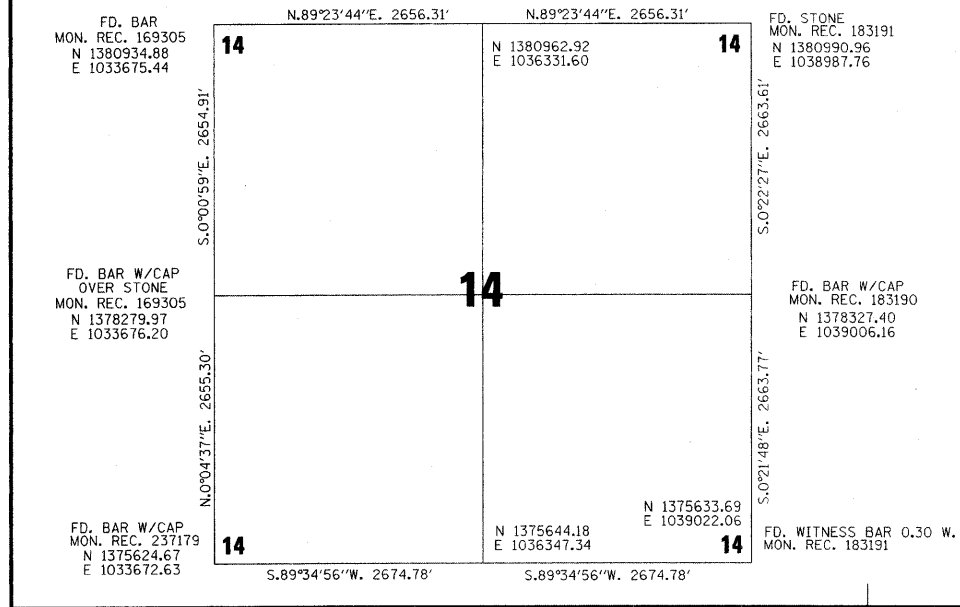
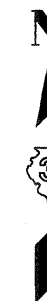
PROFILE	SURVEYED	BY	DATE
	GRADES CHECKED		
	STRUCTURE NOTATIONS CHECKED		
	NOTE BOOK NO.		



FILE NAME =	USER NAME = #USER#	DESIGNED DB	REVISED -	STATE OF ILLINOIS DEPARTMENT OF TRANSPORTATION	DRAINAGE PLAN AND PROFILE SN 027-2552 SHEET 1 OF 2	F.A.P. RTE.	SECTION	COUNTY	TOTAL SHEETS	SHEET NO.	
#FILEL#		DRAWN RM RM	REVISED -			697	(17)I	FORD	29	15	
	PLOT SCALE = #SCALE#	CHECKED AS	REVISED -			CONTRACT NO. 66874					
	PLOT DATE = #DATE#	DATE DECEMBER 2008	REVISED -			FED. ROAD DIST. NO. ILLINOIS FED. AID PROJECT					
				SCALE: 1"=20'		SHEET NO. 1 OF 2 SHEETS		STA. 46+10 TO STA. 52+00			

SECTION 14 DETAIL
(NOT TO SCALE)

N. 1/2 N.W. 1/4 OF SEC. 14, T.23N., R.9E. OF THE 3RD P.M.



PARCEL 3UY0005
STANLEY D. FOSTER

TOTAL HOLDING = 5.049 AC.±
 TOTAL R.O.W. REQUIRED = 0.083 AC.± (3,634 SQ.FT.)
 AREA IN EXIST. R.O.W. = 0.066 AC. (2,881 SQ.FT.)
 NET R.O.W. REQUIRED = 0.017 AC.± (753 SQ.FT.)
 REMAINDER = 4.966 AC.±

PARCEL 3UY0001
CLIFFORD D. FOSTER

TOTAL HOLDING = 74.039 AC.±
 TOTAL R.O.W. REQUIRED = 0.639 AC.±
 AREA IN EXIST. R.O.W. = 0.475 AC.
 NET R.O.W. REQUIRED = 0.164 AC.± (7,157 SQ.FT.)
 REMAINDER = 73.400 AC.±

PARCEL 3UY0002
PAXTON FOUNDATION, INC.

TOTAL HOLDING = 9.168 AC.±
 TOTAL R.O.W. REQUIRED = 0.113 AC.±
 AREA IN EXIST. R.O.W. = 0.098 AC.
 NET R.O.W. REQUIRED = 0.015 AC.± (647 SQ.FT.)
 REMAINDER = 9.055 AC.±

PARCEL 3UY0004
RONALD J. HARNESS, et ux.

TOTAL HOLDING = 99.711 AC.±
 TOTAL R.O.W. REQUIRED = 0.246 AC.±
 AREA IN EXIST. R.O.W. = 0.191 AC.
 NET R.O.W. REQUIRED = 0.055 AC.± (2,396 SQ.FT.)
 REMAINDER = 99.465 AC.±

PARCEL 3UY0003
ROBERT J. REBER, et ux

TOTAL HOLDING = 4.156 AC.±
 TOTAL R.O.W. REQUIRED = 0.183 AC.±
 AREA IN EXIST. R.O.W. = 0.155 AC.
 NET R.O.W. REQUIRED = 0.028 AC.± (1,215 SQ.FT.)
 REMAINDER = 3.973 AC.±



I VINCENT D. BRANDOW, HEREBY CERTIFY THAT I AM A PROFESSIONAL LAND SURVEYOR OF THE STATE OF ILLINOIS, THAT THE SURVEY OF PROPOSED F.A.P. 697 (IL. RTE. 9) WAS MADE BY RENWICK & ASSOCIATES, INC. UNDER MY DIRECTION, AND THAT THE SURVEY IS TRUE AND COMPLETE AS SHOWN TO THE BEST OF MY KNOWLEDGE AND BELIEF, THAT ALL MONUMENTS AND MARKS ARE OF THE CHARACTER AND OCCUPY THE POSITION SHOWN THEREON, AND ARE SUFFICIENT TO ENABLE THE SURVEY TO BE RETRACED. THIS PROFESSIONAL SERVICE CONFORMS TO THE CURRENT ILLINOIS MINIMUM STANDARDS FOR A BOUNDARY SURVEY.

DATE: 10-6-08

Vincent D. Brandow
 ILLINOIS PROFESSIONAL LAND SURVEYOR
 NO. 2655

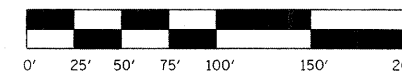
SURVEY BOOK NO. _____

11-30-08
 EXPIRATION DATE

S. 1/2 N.W. 1/4 OF SEC. 14, T.23N., R.9E. OF THE 3RD P.M.

NOTE: ALL BEARINGS ARE REFERENCED TO THE ILLINOIS STATE PLANE COORDINATE SYSTEM, EAST ZONE (N.A.D. 83)

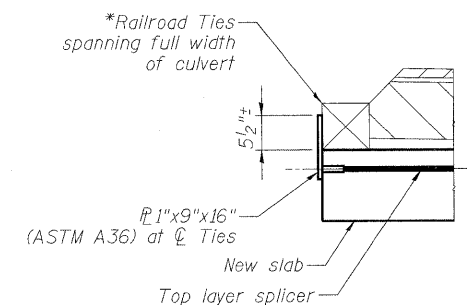
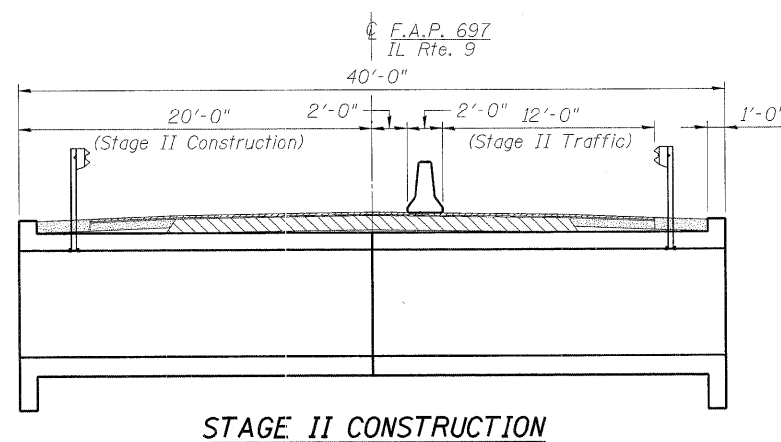
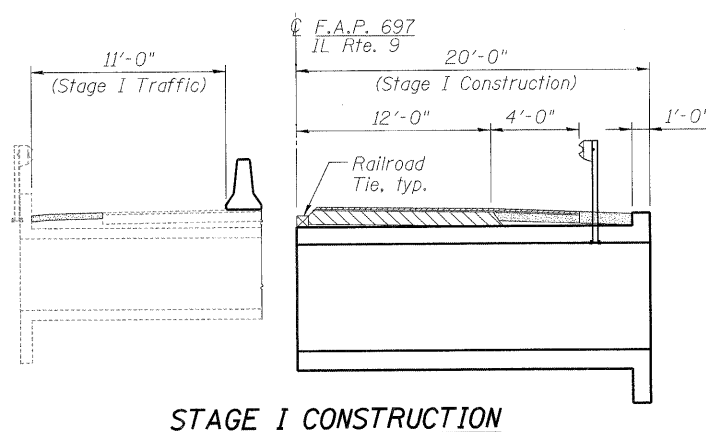
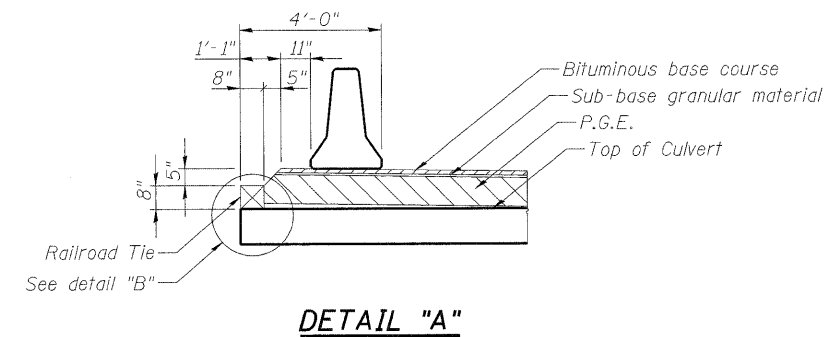
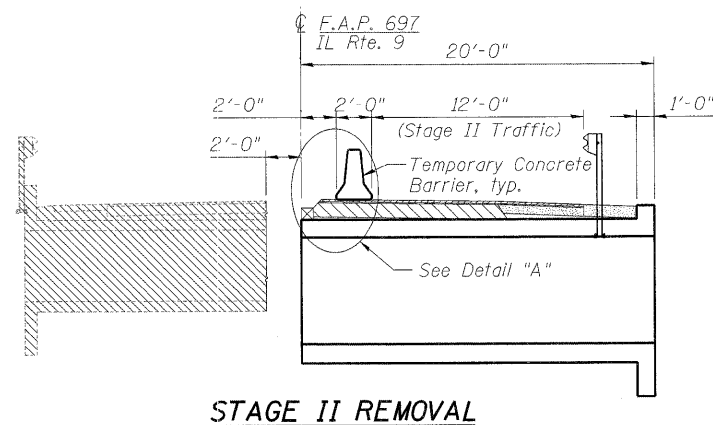
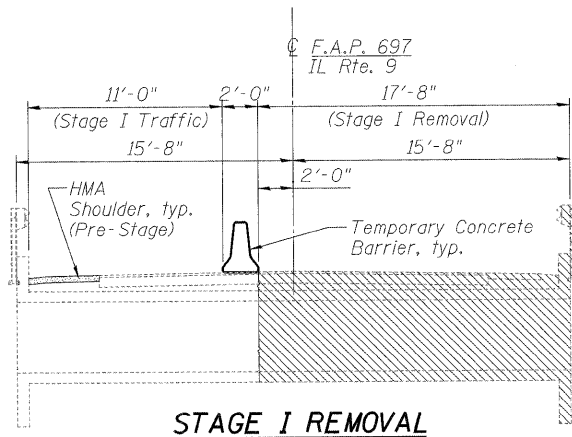
SCALE 1" = 50'



RIGHT OF WAY PLANS

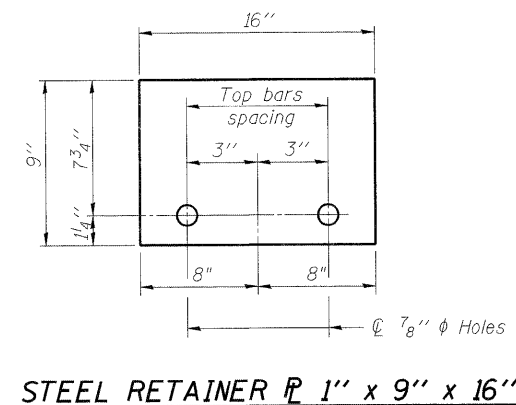
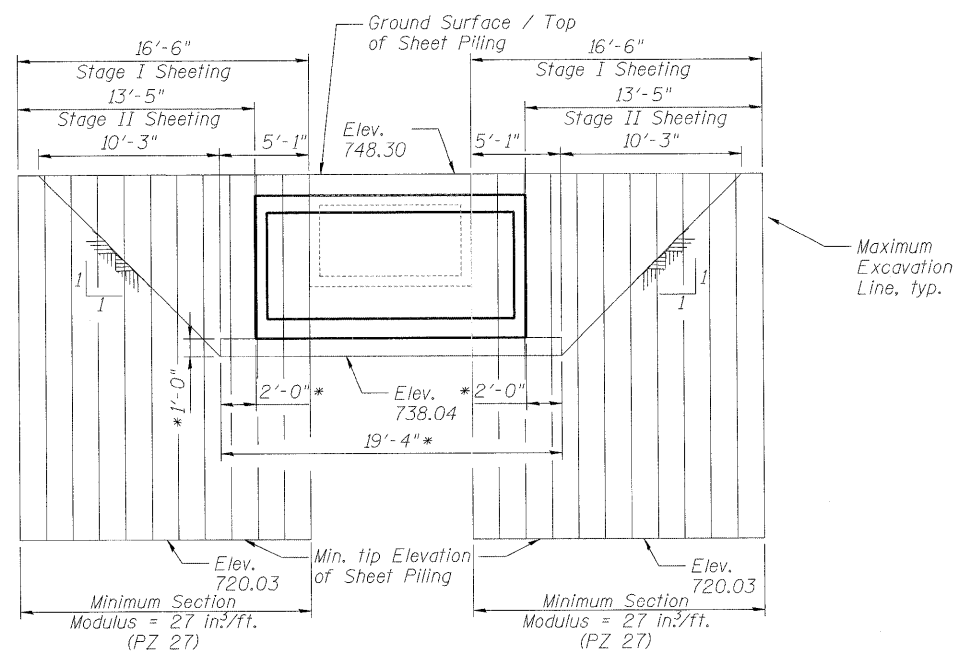
ROUTE	F.A.P. 697 (IL ROUTE 9)
SECTION	(17)I
PROJECT	
COUNTY	FORD
JOB NUMBER	R-93-016-07
STATION	47+00 TO 56+00
SHEET	16 OF 29 SCALE 1" = 50'

STATE OF ILLINOIS
DEPARTMENT OF TRANSPORTATION



*Cost included with "Concrete Box Culverts"

* Limits of Removal and Disposal of Unsuitable Material, See Note 3 on Sheet S1 of S5, typ.



- Notes:
1. All staging cross sections are looking East.
 2. Hatched area indicates removal of existing structures.
 3. Cost of temporary concrete barrier will be included in the pay item for "Traffic Control and Protection, Standard 701321".

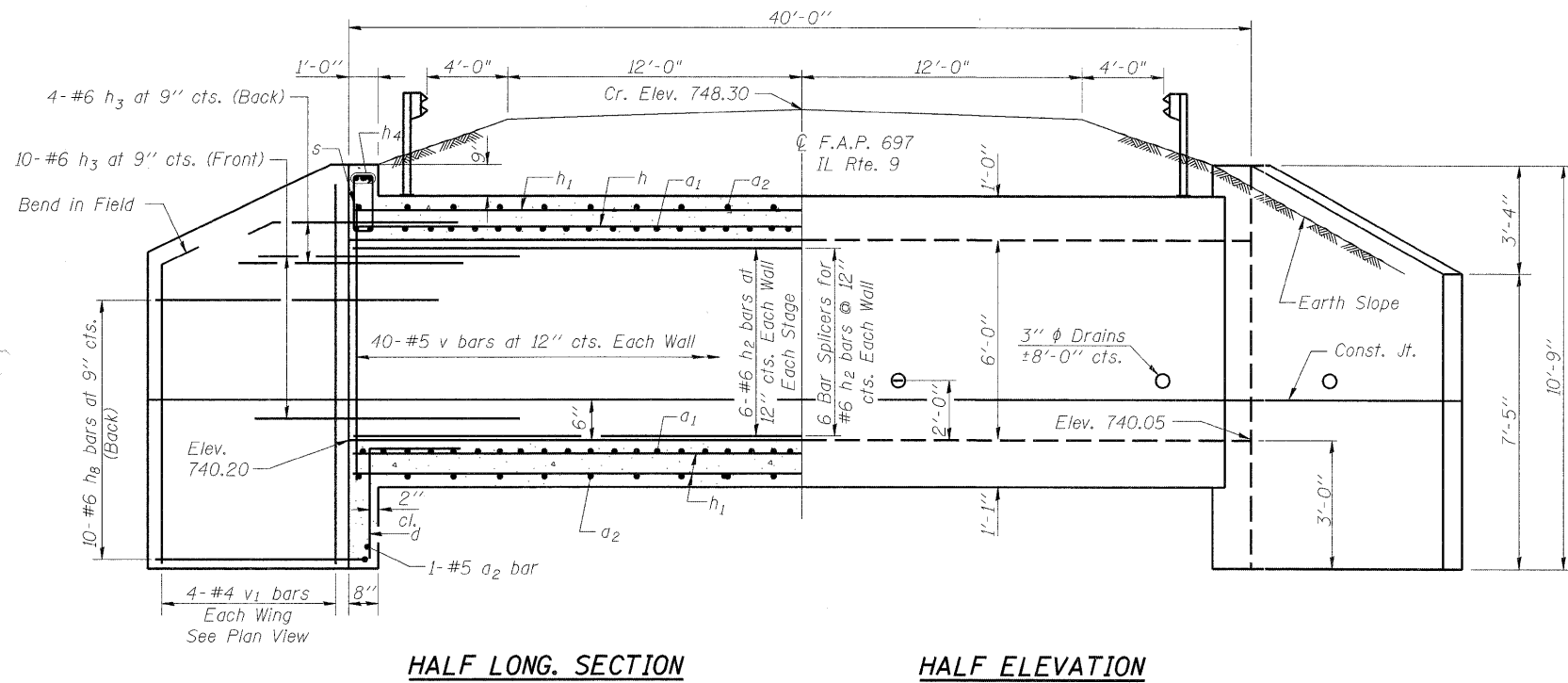
STAGE CONSTRUCTION
ILLINOIS ROUTE 9 OVER DRAINAGE DITCH
F.A.P. ROUTE 697 - SECTION 17(I)
FORD COUNTY
STATION 50+55.00
SN 027-2552
Scale: None December 2008

DESIGNED - GBC/GMK
CHECKED - GBC/GMK/SMK
DRAWN - RR
CHECKED - GBC/GMK/SMK



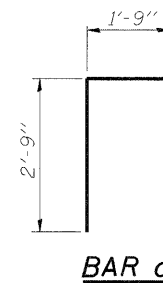
SHEET NO. S2	F.A.P. RTE. 697	SECTION 17(I)	COUNTY FORD	TOTAL SHEETS 29	SHEET NO. 18
S5 SHEETS	CONTRACT NO. 66874		FED. ROAD DIST. NO. ILLINOIS FED. AID PROJECT		

STATE OF ILLINOIS
DEPARTMENT OF TRANSPORTATION

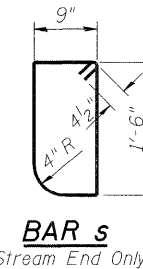


HALF LONG SECTION

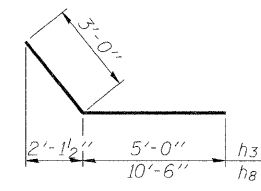
HALF ELEVATION



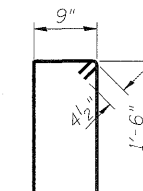
BAR d



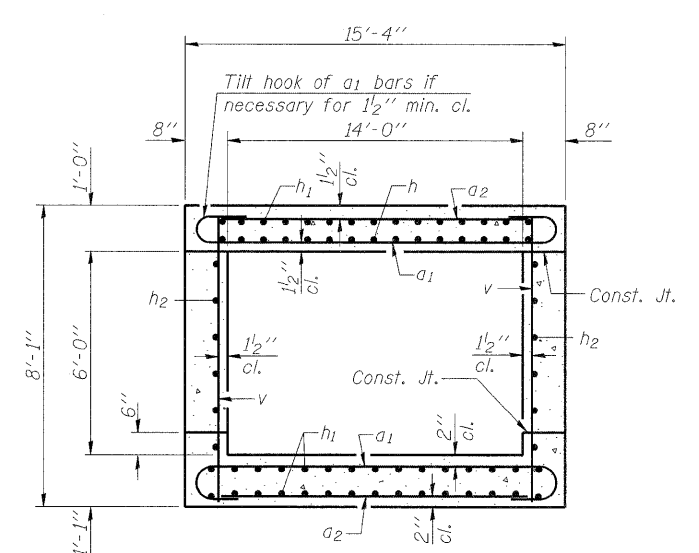
BAR s
(Up Stream End Only)



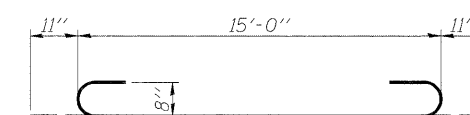
BARS h3 & h8



BAR s1
(Down Stream End Only)



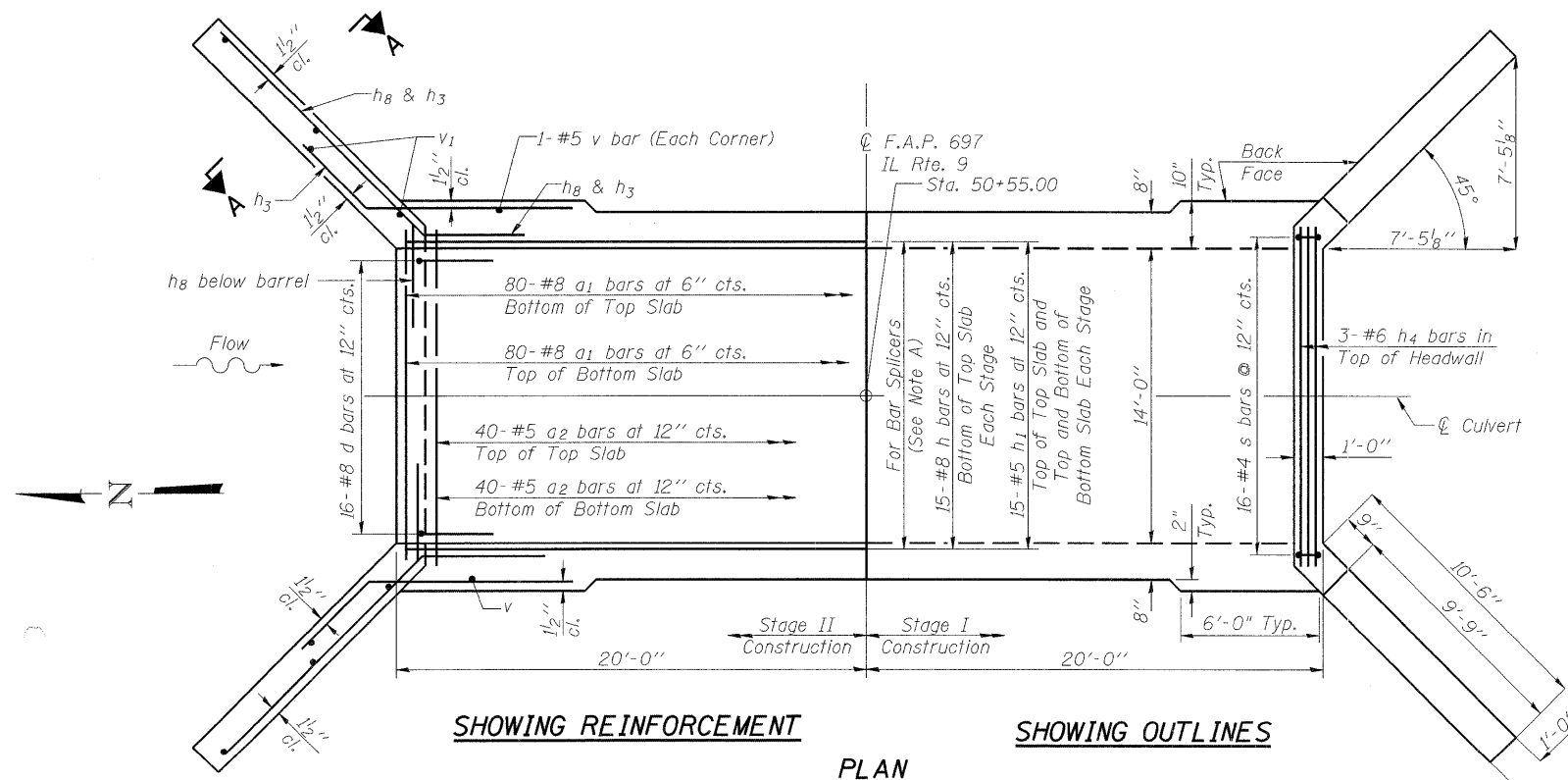
SECTION THRU BARREL



BAR a1

BILL OF MATERIAL

Bar	No.	Size	Length	Shape
a1	160	#8	16'-10"	U
a2	80	#5	15'-1"	—
d	32	#4	4'-6"	U
h	30	#8	19'-9"	—
h1	90	#5	19'-9"	—
h2	24	#6	19'-9"	—
h3	56	#6	8'-0"	—
h4	6	#6	14'-9"	—
h8	40	#6	13'-6"	—
v	84	#5	7'-10"	—
v1	16	#4	10'-6"	—
s	16	#4	5'-3"	U
s1	16	#4	4'-9"	U
Concrete Box Culverts			Cu. Yd.	65.1
Reinforcement Bars			Pound	15,530
Bar Splicers			Each	72



SHOWING REINFORCEMENT

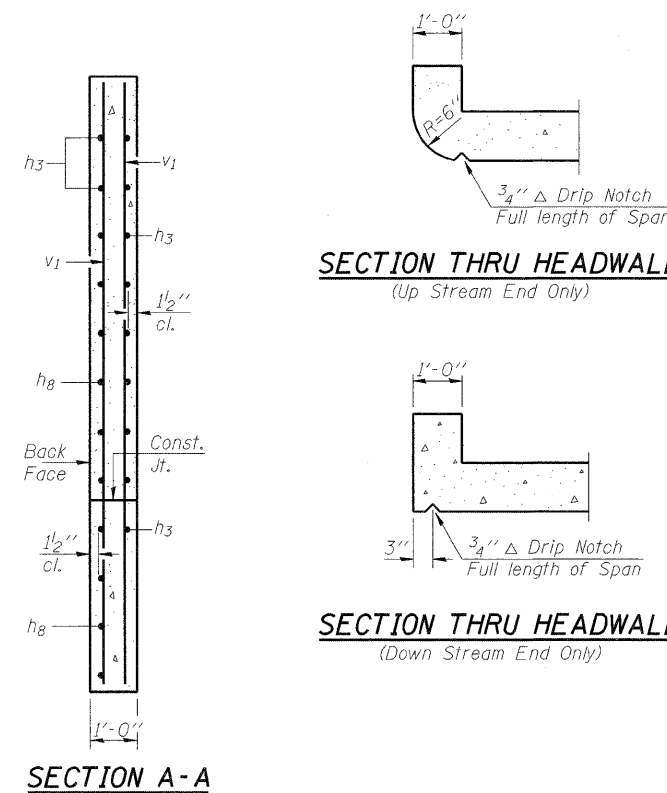
SHOWING OUTLINES

- Note A:
 15 - Bar Splicers for #8 h bars, Bottom of Top Slab
 15 - Bar Splicers for #5 h1 bars, Top of Top Slab
 15 - Bar Splicers for #5 h1 bars, Bottom of Bottom Slab
 15 - Bar Splicers for #5 h1 bars, Top of Bottom Slab

NOTES

A distance of half the length of the wingwall but not less than six feet of the barrel shall be poured monolithically with the wingwalls. Reinforcement bars shall conform to the requirements of ASTM A 706 Gr 60. See Special Provisions.

DESIGNED - GBC/GMK
 CHECKED - GBC/GMK/SMK
 DRAWN - RR
 CHECKED - GBC/GMK/SMK
 SSB-H-0



SECTION A-A

SECTION THRU HEADWALL
(Up Stream End Only)

SECTION THRU HEADWALL
(Down Stream End Only)

CULVERT AND WINGWALL SECTIONS AND DETAILS
 ILLINOIS ROUTE 9 OVER DRAINAGE DITCH
 F.A.P. ROUTE 697 - SECTION 17(I)
 FORD COUNTY
 STATION 50+55.00
 SN 027-2552

Scale: None December 2008

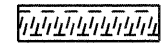
SHEET NO. S3	F.A.P. RTE.	SECTION	COUNTY	TOTAL SHEETS	SHEET NO.
	697	17(I)	FORD	29	19
S5 SHEETS	CONTRACT NO. 66874				
FED. ROAD DIST. NO.		ILLINOIS FED. AID PROJECT			

STATE OF ILLINOIS
DEPARTMENT OF TRANSPORTATION

The diameter of this part is equal or larger than the diameter of bar spliced.

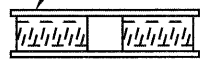
The diameter of this part is the same as the diameter of the bar spliced.

ROLLED THREAD DOWEL BAR



** ONE PIECE

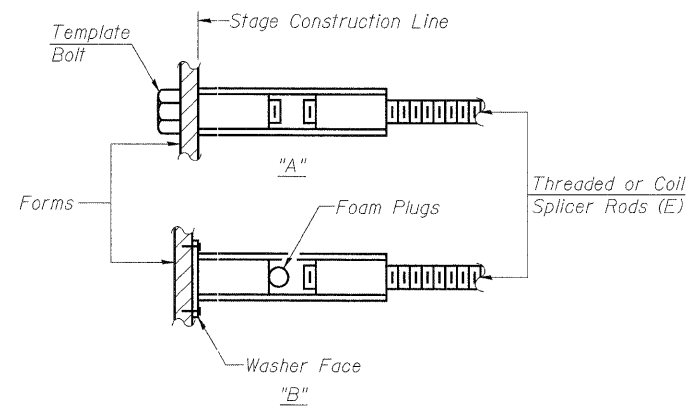
Wire Connector



WELDED SECTIONS

BAR SPLICER ASSEMBLY ALTERNATIVES

**Heavy Hex Nuts conforming to ASTM A 563, Grade C, D or DH may be used.



INSTALLATION AND SETTING METHODS

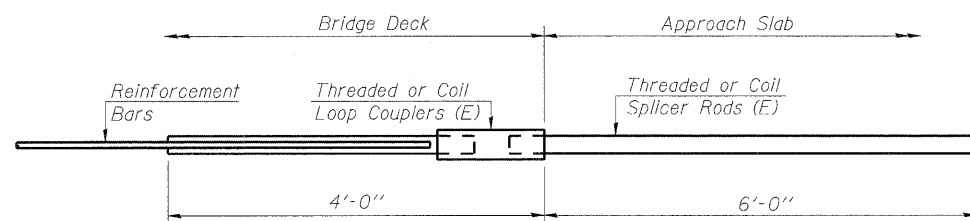
"A" : Set bar splicer assembly by means of a template bolt.
"B" : Set bar splicer assembly by nailing to wood forms or cementing to steel forms.
(E) : Indicates epoxy coating.

NOTES

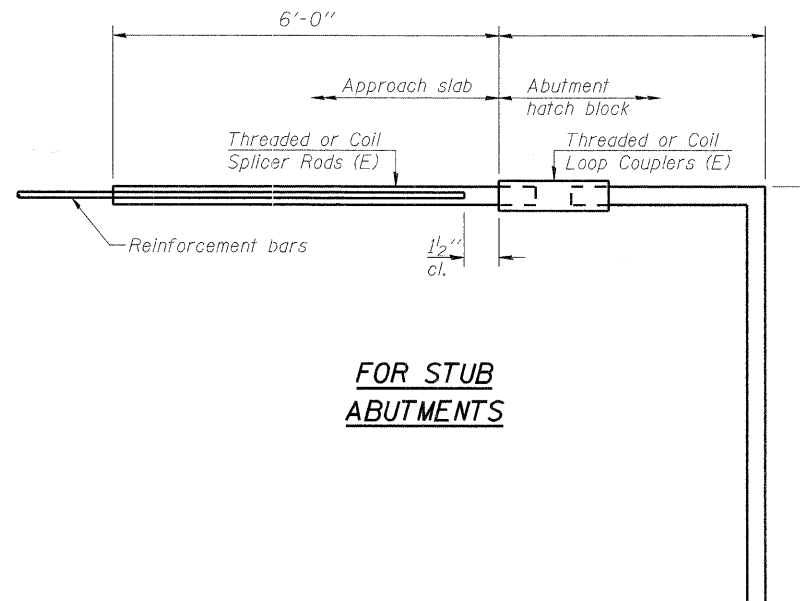
Bar splicer assemblies shall be of an approved type and shall develop in tension at least 125 percent of the yield strength of the lapped reinforcement bars.
Splicer rods shall be of minimum 60 ksi yield strength, threaded or coiled full length.
All reinforcement bars shall be lapped and tied to the splicer rods or dowel bars.
Bar splicer assemblies shall be epoxy coated according to the requirements for reinforcement bars.
Other systems of similar design may be submitted to the Engineer for approval. Approval shall be based on certified test results from an approved testing laboratory that the proposed bar splicer assembly satisfies the following requirements:

- ① Minimum Capacity (Tension in kips) = $1.25 \times f_y \times A_l$
Minimum *Pull-out Strength (Tension in kips) = $0.66 \times f_y \times A_l$
 - ② Minimum Capacity (Tension in kips) = $1.25 \times f_y \times A_l$
Minimum *Pull-out Strength (Tension in kips) = $0.66 \times f_y \times A_l$
- Where f_y = Yield strength of lapped reinforcement bars in ksi.
 A_l = Tensile stress area of lapped reinforcement bars.
* = 28 day concrete

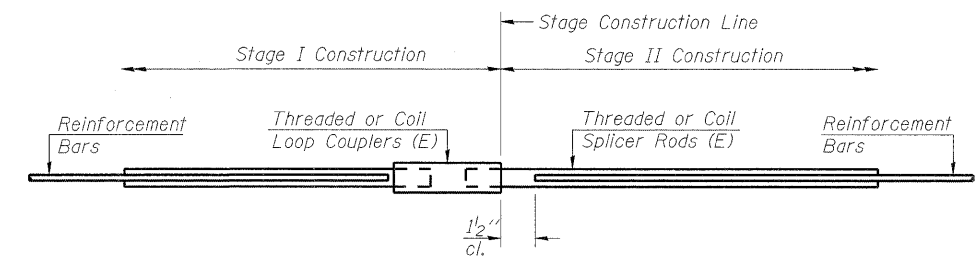
BAR SPLICER ASSEMBLIES			
Bar Size to be Spliced	Splicer Rod or Dowel Bar Length	Strength Requirements	
		Min. Capacity kips - tension	Min. Pull-Out Strength kips - tension
#4	1'-8"	14.7	7.9
#5	2'-2"	23.0	12.3
#6	2'-7"	33.1	17.4
#7	3'-5"	45.1	23.8
#8	4'-6"	58.9	31.3
#9	5'-9"	75.0	39.6
#10	7'-3"	95.0	50.3
#11	9'-0"	117.4	61.8



FOR INTEGRAL OR SEMI-INTEGRAL ABUTMENTS



FOR STUB ABUTMENTS



STANDARD

Bar Size	No. Assemblies Required	Location
#5	15	Bottom of Bottom Slab
#5	15	Top of Bottom Slab
#6	12	Side Walls
#8	15	Bottom of Top Slab
#5	15	Top of Top Slab

Bar Splicer for #5 bar
Min. Capacity = 23.0 kips - tension
Min. Pull-out Strength = 12.3 kips - tension
No. Required =

Bar Splicer for #5 bar
Min. Capacity = 23.0 kips - tension
Min. Pull-out Strength = 12.3 kips - tension
No. Required =

DESIGNED - GBC/GMK
CHECKED - GBC/GMK/SMK
DRAWN - RR
CHECKED - GBC/GMK/SMK

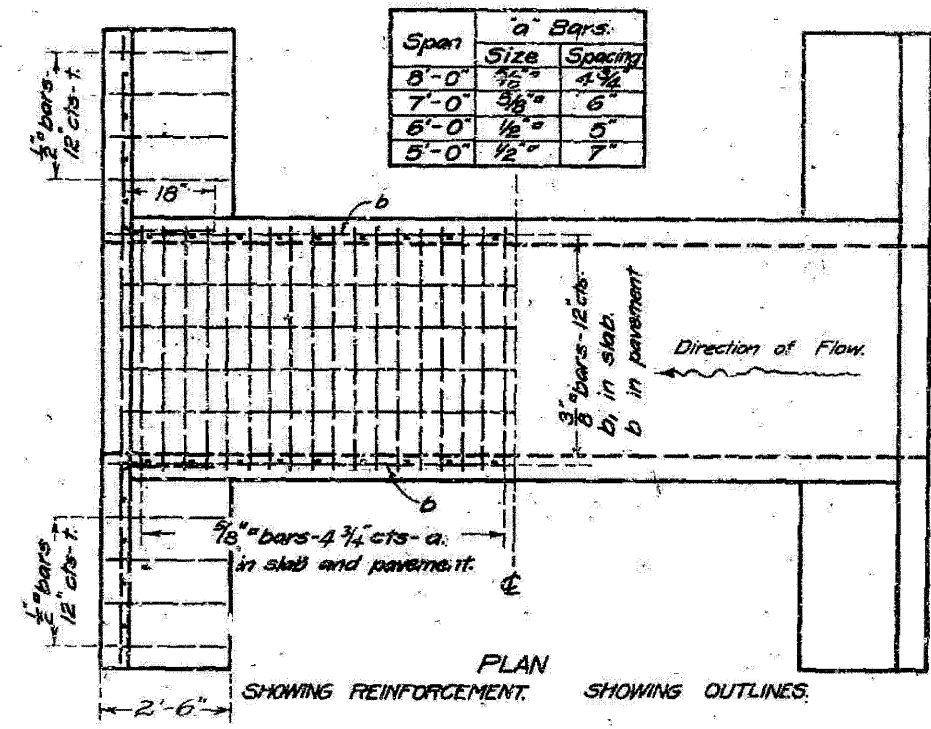
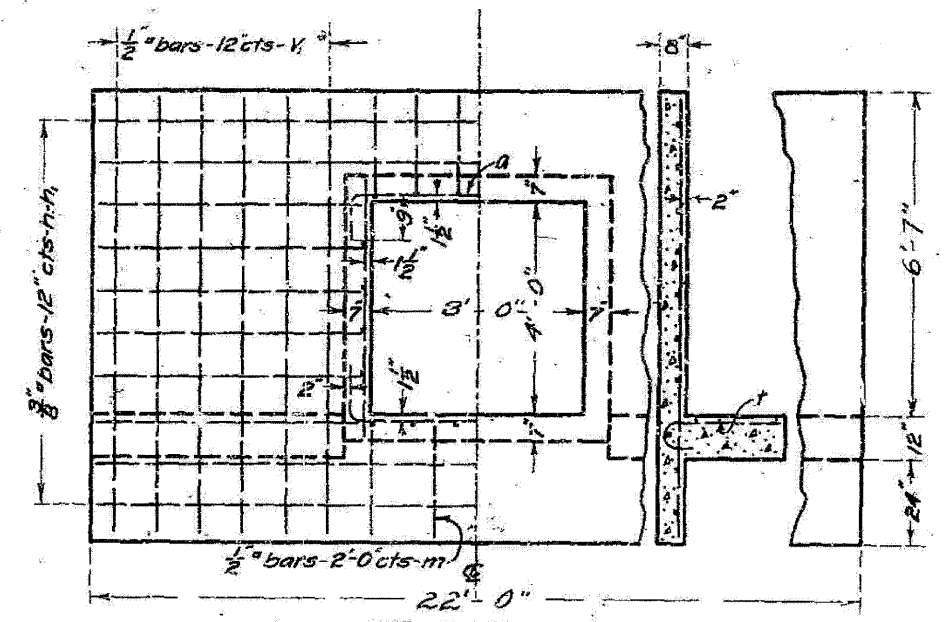
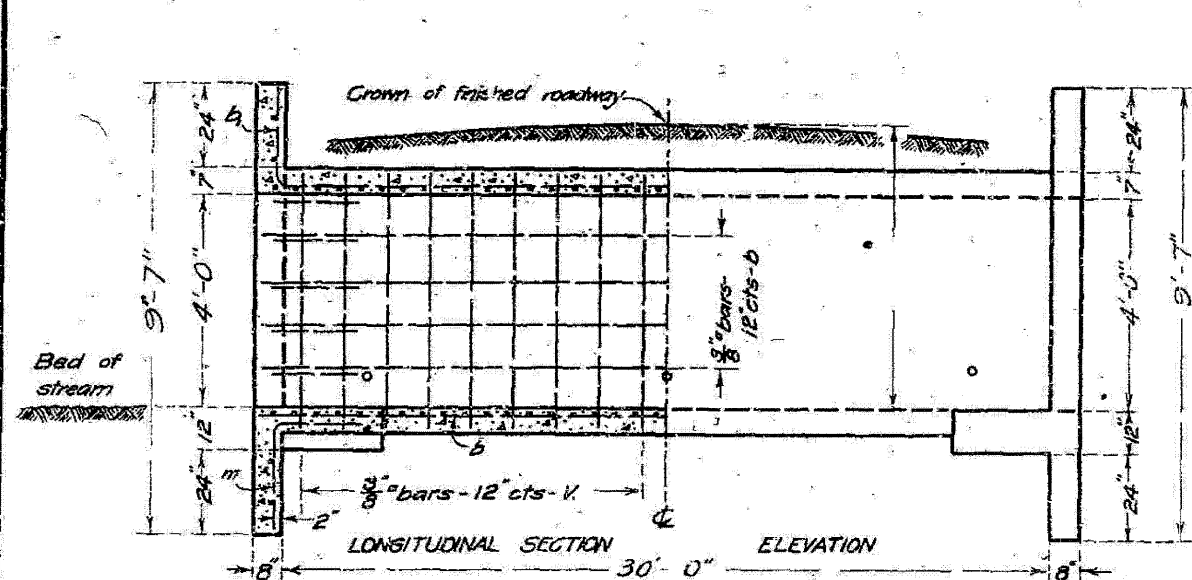
BSD-1

BAR SPLICER (COUPLER) DETAILS
ILLINOIS ROUTE 9 OVER DRAINAGE DITCH
F.A.P. ROUTE 697 - SECTION 17(I)
FORD COUNTY
STATION 50+55.00
SN 027-2552

Scale: None December 2008

SHEET NO. 54	F.A.P. RTE.	SECTION	COUNTY	TOTAL SHEETS	SHEET NO.
	697				
S5 SHEETS	CONTRACT NO. 66874				
FED. ROAD DIST. NO.		ILLINOIS		FED. AID PROJECT	

STATE OF ILLINOIS
STATE HIGHWAY DEPARTMENT
REINFORCED CONCRETE BOX CULVERT



Note: Use 'm' bars in downstream headwall only.
Box is designed for no fill.
Maximum clearance = 7'-6"

BILL OF MATERIAL

Bars	No.	Size	Length
v	60	3/8"	5'-0"
v ₁	24	1/2"	9'-0"
h	8	3/8"	2'-6"
h ₁	20	3/8"	8'-6"
a	156	3/8"	10'-0"
b	32	3/8"	16'-6"
b ₁	16	3/8"	18'-0"
?	24	1/2"	3'-0"
m	4	1/2"	5'-0"
Steel - Lbs.		3030	
Concrete - Cu. Yds.		27.6	

Class A concrete to be used throughout
Proportions 1-2 1/4-4

COMPUTED - Walter J. Judd
CHECKED - W. J. Judd
DRAWN - W. J. Judd
CHECKED - W. J. Judd
ASSEMBLED - W. J. Judd
CHECKED - W. J. Judd
EXAMINED -
BRIDGE ENGINEER -
APPROVED - 16
STATE HIGHWAY ENGINEER -

EXISTING PLANS FOR INFORMATION ONLY

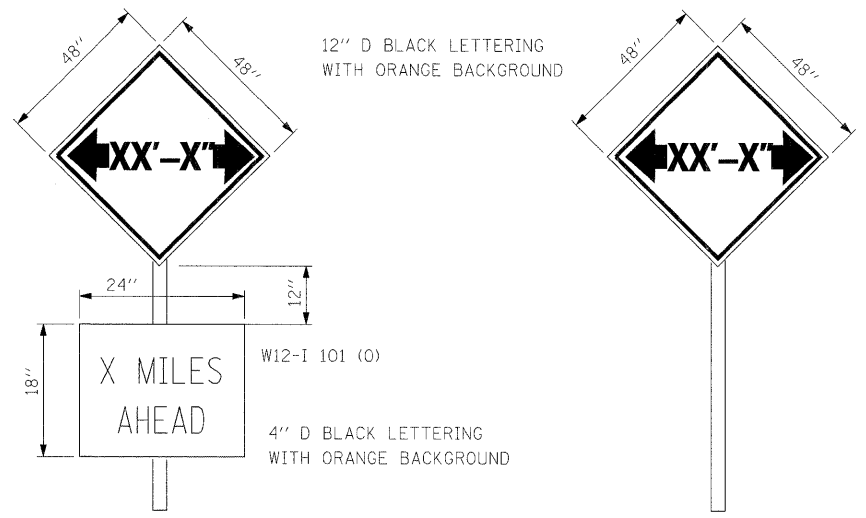
STR. 027-2536

618-20

DATE _____ BY _____
 SURVEYED _____
 ALIGNMENT CHECKED _____
 RT. OF WAY CHECKED _____
 ROAD FILE NAME _____
 PLAN _____
 NOTE BOOK _____
 NO. _____

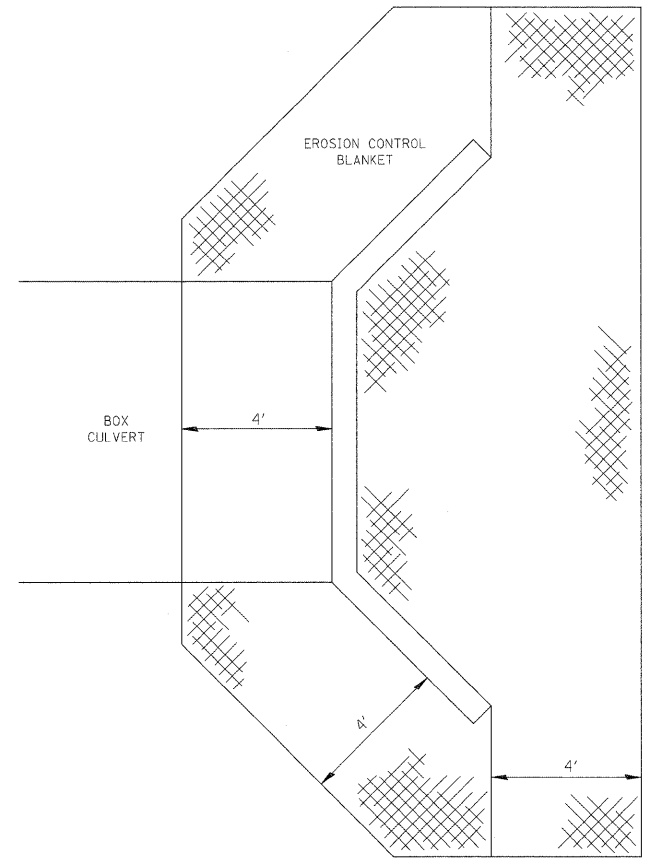
DATE _____ BY _____
 SURVEYED _____
 GRADES CHECKED _____
 I&M NOTED _____
 STRUCTURE NOTATIONS OK'D _____
 PROFILE _____
 NOTE BOOK _____
 NO. _____

WIDTH RESTRICTION SIGN PLACEMENT	STAGE I TEXT	STAGE II TEXT
AFTER ROAD CONSTRUCTION AHEAD SIGN (EAST BOUND)	9'-6"	10'-6"
AFTER ROAD CONSTRUCTION AHEAD SIGN (WEST BOUND)	9'-6"	10'-6"
WEST OF IL-115	9'-6"	10'-6"
EAST OF IL-57	9'-6"	10'-6"

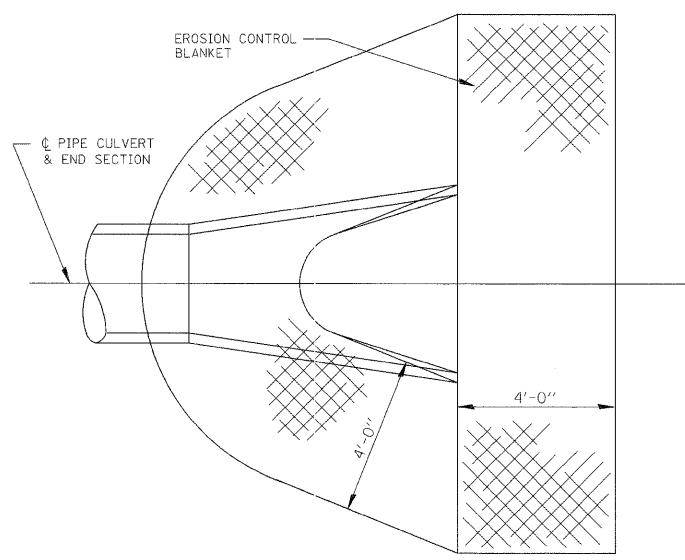


TO BE POST MOUNTED AT LOCATIONS SHOWN IN THE TABLE.
 THE CONTRACTOR SHALL BE RESPONSIBLE FOR COORDINATING WITH THE ENGINEER TO MEET THIS REQUIREMENT.
 COST OF SUPPLYING, INSTALLING, MAINTAINING AND REMOVING WIDTH RESTRICTION SIGNS SHALL BE INCLUDED IN THE COST OF THE TRAFFIC CONTROL AND PROTECTION PAY ITEMS.

WIDTH RESTRICTION SIGNING DETAILS

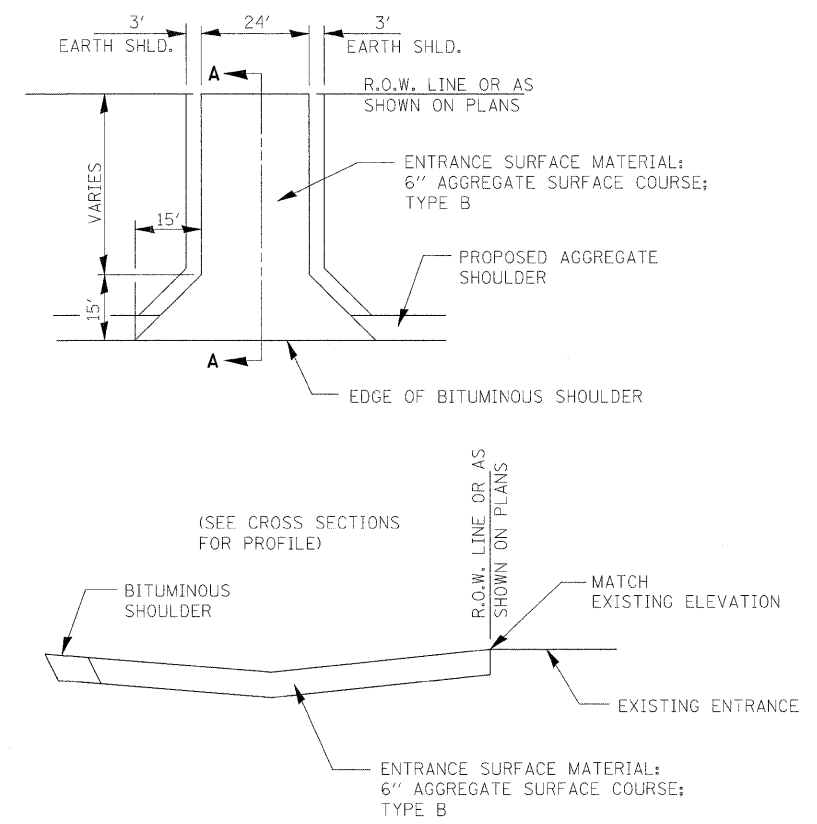


EROSION CONTROL BLANKET AT BOX CULVERT END SECTIONS

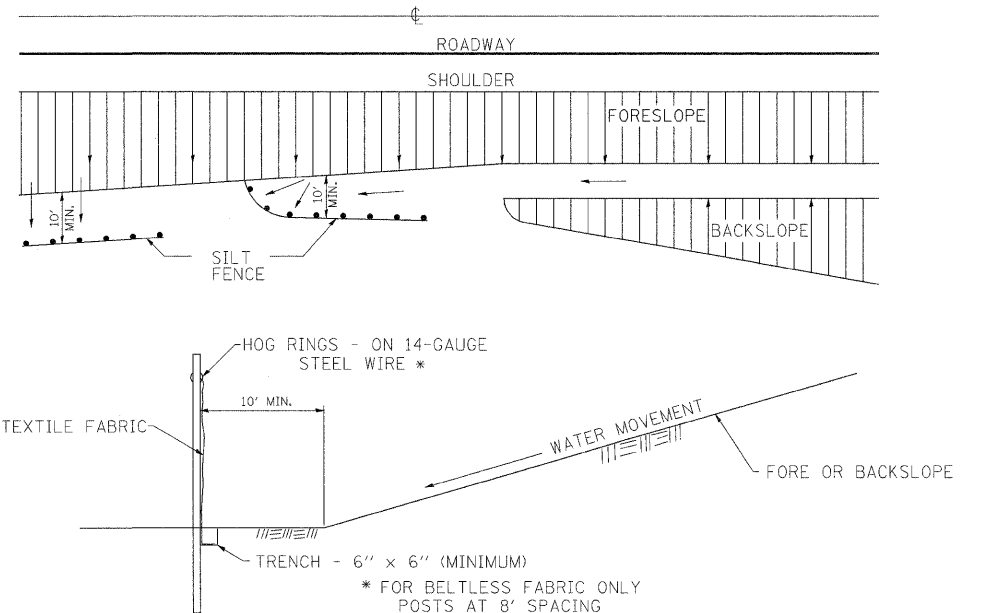


DETAIL OF EROSION CONTROL BLANKET LINING AROUND END SECTION

NOTE: PRC FLARED END SECTION SHOWN. TREATMENT SAME FOR OTHER END SECTIONS.



FIELD ENTRANCE DETAIL

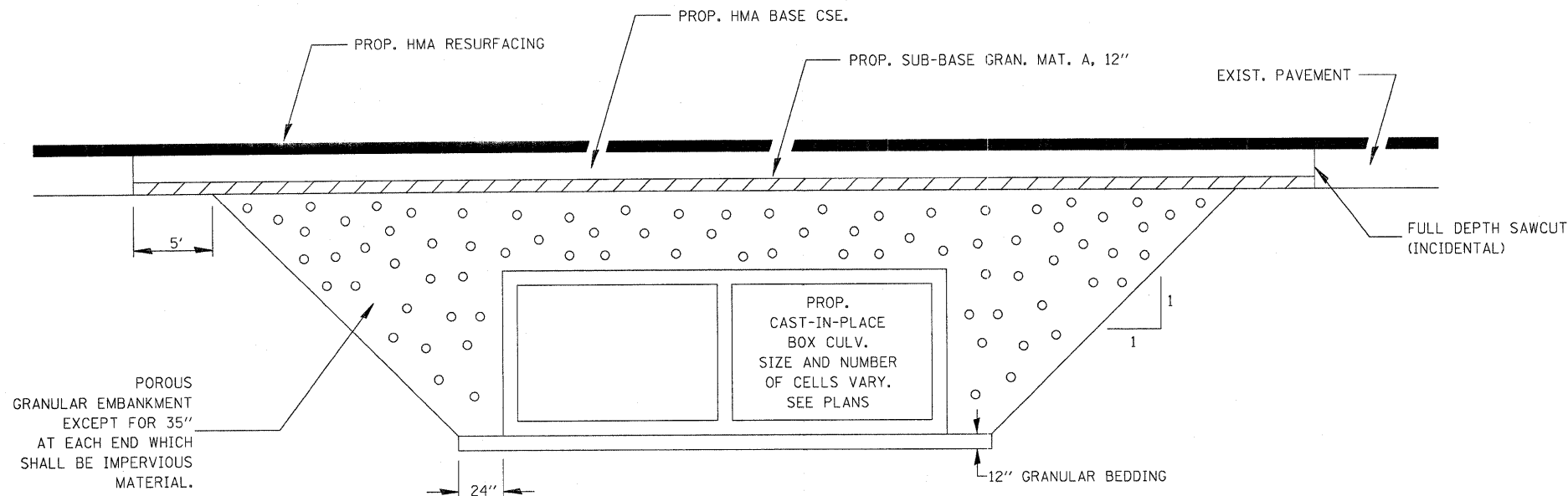


DETAILS OF SILT FENCE

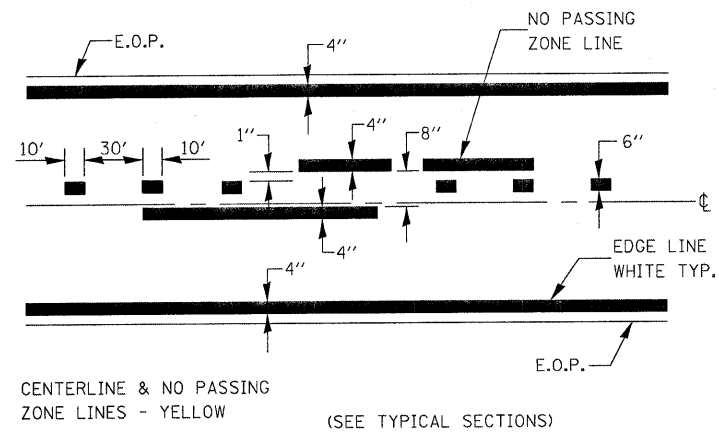
EROSION CONTROL DETAILS FOR SILT FENCE

DATE	
BY	
REVIEWED	
PLANNED	
NOTED	
NO.	

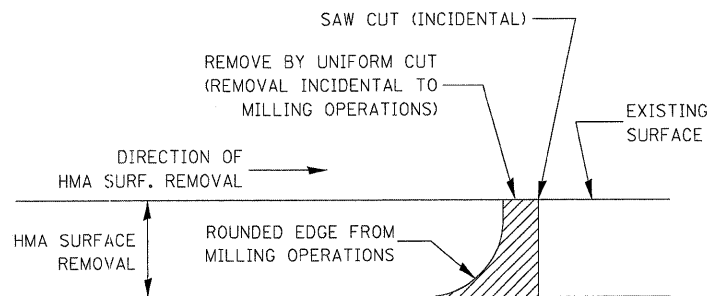
DATE	
BY	
REVIEWED	
PLANNED	
NOTED	
NO.	



SECTION THROUGH CAST-IN-PLACE BOX CULVERT

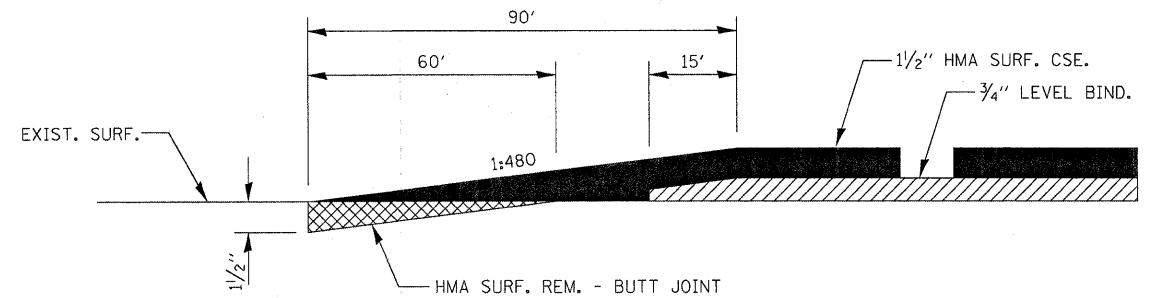


PAVEMENT MARKING

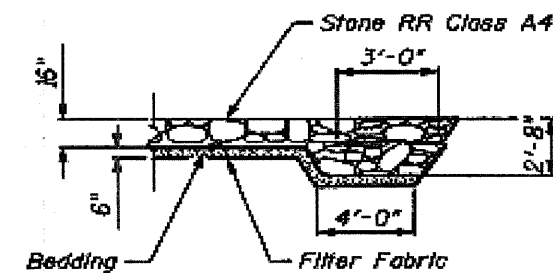


HMA DETAIL AT BUTT JOINTS

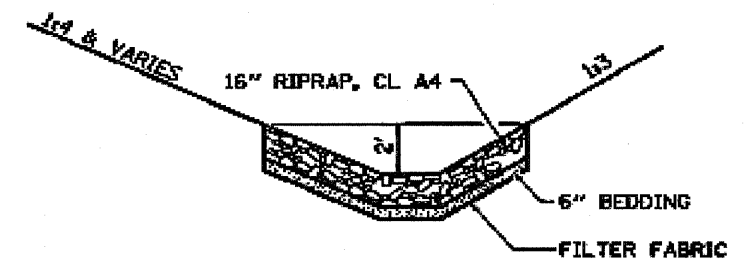
NOTE:
WHEN MILLING OPERATIONS PRODUCE A ROUNDED EDGE, THEN A SAW CUT SHALL BE USED TO MANUFACTURE A PERPENDICULAR EDGE AS SHOWN IN THE DETAIL. THE ENGINEER SHALL BE THE SOLE JUDGE CONCERNING THE USE OF THIS DETAIL



BUTT JOINT



SECTION A-A FLANK DETAIL

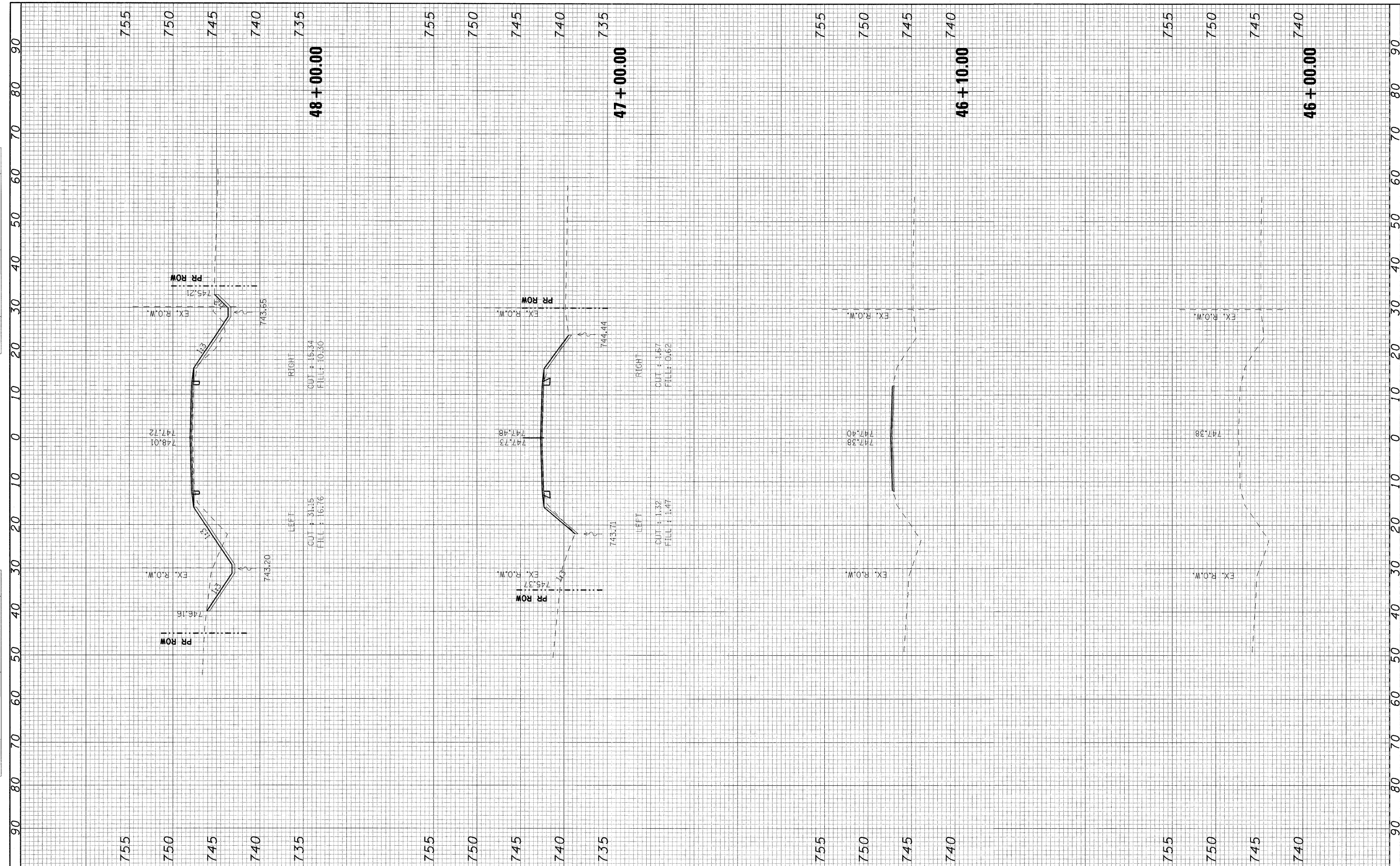


RIPRAP LINED DITCH DETAIL

FILE NAME =	USER NAME = carpenterdj	DESIGNED DB	REVISED -	STATE OF ILLINOIS DEPARTMENT OF TRANSPORTATION	DISTRICT DETAILS			F.A.P. RTE.	SECTION	COUNTY	TOTAL SHEETS	SHEET NO.
ci:\pwork\pwidot\carpenterdj\dms77953\027-2552-25district.det.sht2.dgn	DRAWN NS/RM	CHECKED AS	REVISED -					697	(17)I	FORD	29	25
PLOT SCALE = 20.00 "/ IN.	DATE DECEMBER 2008	REVISOR	REVISED -		CONTRACT NO. 66874			ILLINOIS FED. AID PROJECT				
PLOT DATE = Dec 30, 2008 - 09:02:35 AM	DATE DECEMBER 2008	REVISOR	REVISED -		SCALE: NONE	SHEET NO. 1 OF SHEETS	STA. TO STA.					

FINAL SURVEY
 SURVEYED BY: _____ DATE: _____
 CHECKED BY: _____
 NOTE BOOK NO. _____
 TEMPLATES USED: _____
 AREAS CHECKED: _____
 AREAS CHECKED: _____

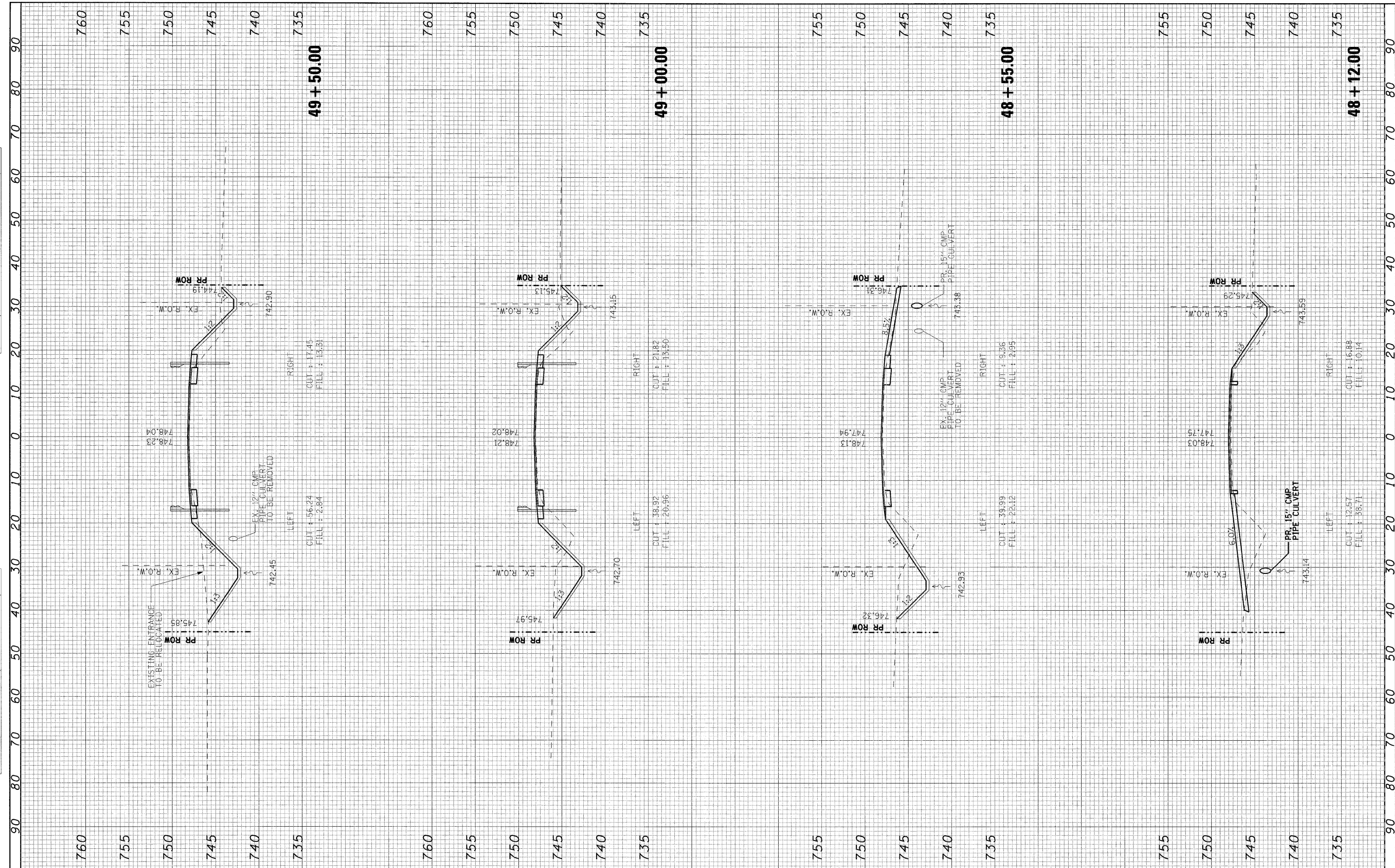
ORIGINAL SURVEY
 SURVEYED BY: _____ DATE: _____
 CHECKED BY: _____
 NOTE BOOK NO. _____
 TEMPLATES USED: _____
 AREAS CHECKED: _____
 AREAS CHECKED: _____



FILE NAME = #FILEL*	USER NAME = #USER*	DESIGNED - DB	REVISED -	STATE OF ILLINOIS DEPARTMENT OF TRANSPORTATION	CROSS SECTIONS		F.A.P. RTE. 697	SECTION (17)I	COUNTY FORD	TOTAL SHEETS 29	SHEET NO. 26	
	PLOT SCALE = #SCALE*	DRAWN - NS	REVISED -		SCALE: 1"=10'	SHEET NO. 1 OF 4 SHEETS	STA. 46+00	TO STA. 48+00	CONTRACT NO. 66874			
	PLOT DATE = #DATE*	CHECKED - AS	REVISED -		FED. ROAD DIST. NO. [ILLINOIS] FED. AID PROJECT							
		DATE - DECEMBER 2008	REVISED -									

FINAL SURVEY BY DATE
 SURVEY NO. _____
 CHECKED BY _____
 DATE _____
 NO. _____

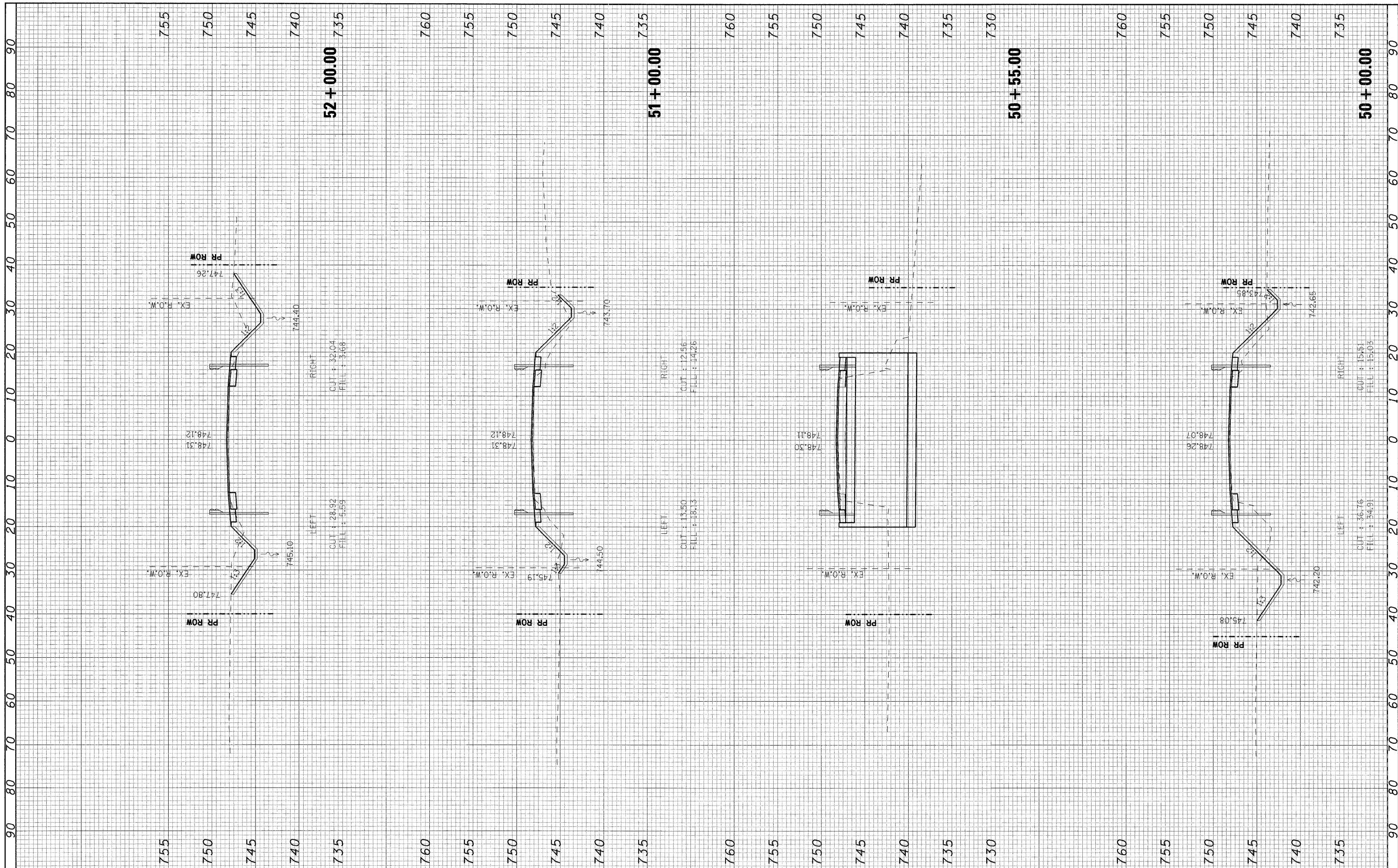
ORIGINAL SURVEY BY DATE
 SURVEY NO. _____
 CHECKED BY _____
 DATE _____
 NO. _____



FILE NAME =	USER NAME = #USER#	DESIGNED - DB	REVISED -	STATE OF ILLINOIS DEPARTMENT OF TRANSPORTATION	CROSS SECTIONS			F.A.P. RTE.	SECTION	COUNTY	TOTAL SHEETS	SHEET NO.
#FILEL#		DRAWN - NS	REVISED -		SCALE: 1"=10'	SHEET NO. 2 OF 4 SHEETS	STA. 48+12 TO STA. 49+50	697	(17I)	FORD	29	27
	PLOT SCALE = #SCALE#	CHECKED - AS	REVISED -		CONTRACT NO. 66874							
	PLOT DATE = #DATE#	DATE - DECEMBER 2008	REVISED -		FED. ROAD DIST. NO. ILLINOIS FED. AID PROJECT							

FINAL SURVEY
 SURVEYED BY: _____ DATE: _____
 CHECKED BY: _____
 NOTE BOOK NO.: _____
 TEMPLATE NO.: _____
 AREAS CHECKED: _____

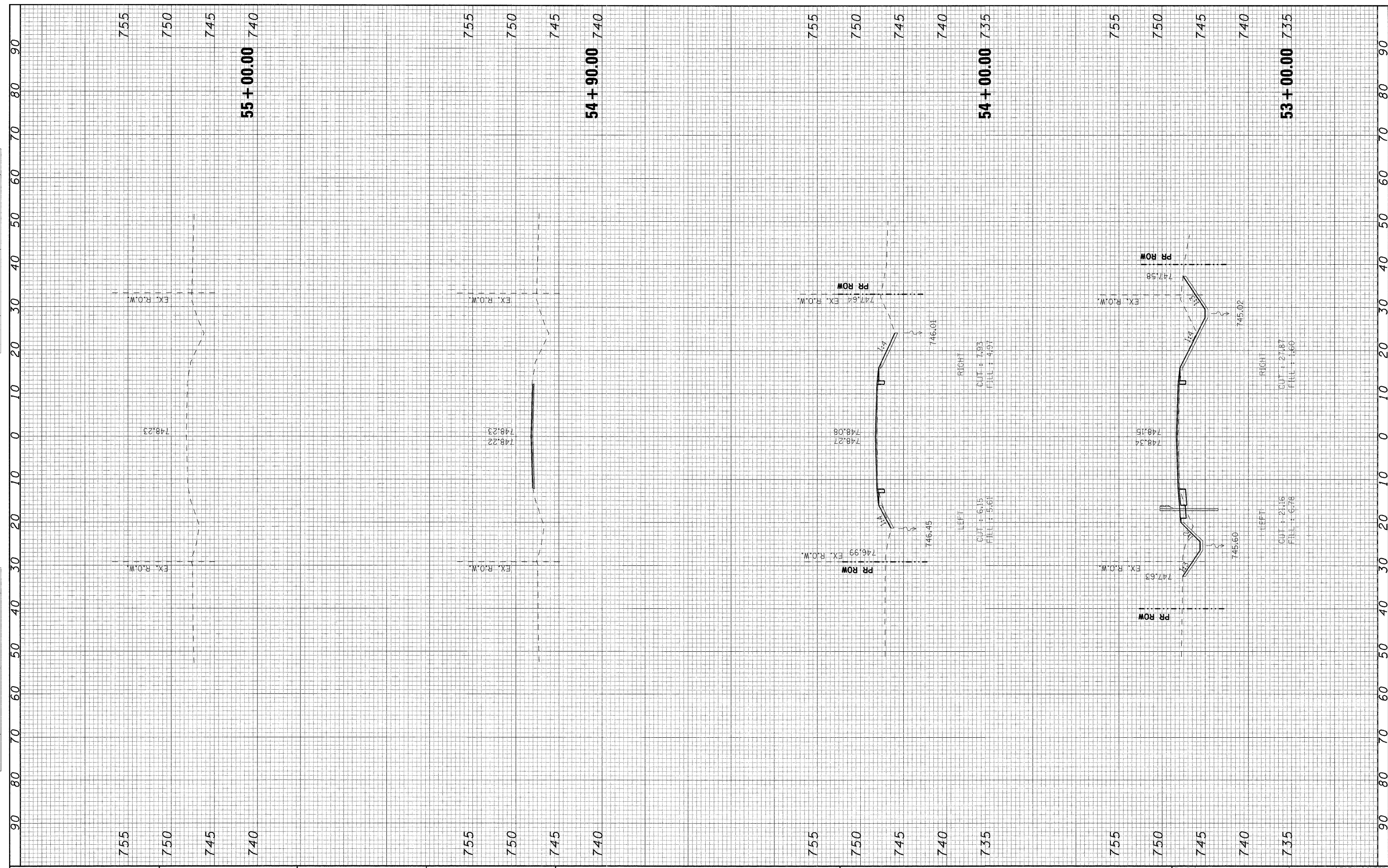
ORIGINAL SURVEY
 SURVEYED BY: _____ DATE: _____
 CHECKED BY: _____
 NOTE BOOK NO.: _____
 TEMPLATE NO.: _____
 AREAS CHECKED: _____



FILE NAME = #FILEL*	USER NAME = #USER*	DESIGNED - DB	REVISED -	STATE OF ILLINOIS DEPARTMENT OF TRANSPORTATION	CROSS SECTIONS			F.A.P. RTE. 697	SECTION (171)	COUNTY FORD	TOTAL SHEETS 29	SHEET NO. 28
	PLOT SCALE = #SCALE*	DRAWN - NS	REVISED -		SCALE: 1"=10'	SHEET NO. 3 OF 4 SHEETS	STA. 50+00	TO STA. 52+00	CONTRACT NO. 66874			
	PLOT DATE = #DATE*	CHECKED - AS	REVISED -		FED. ROAD DIST. NO. [ILLINOIS] FED. AID PROJECT							
		DATE - DECEMBER 2008	REVISED -									

ORIGINAL SURVEY NO. _____	DATE _____
BY _____	BY _____
DATE _____	DATE _____
NO. _____	NO. _____
NO. _____	NO. _____
NO. _____	NO. _____
NO. _____	NO. _____

FINAL SURVEY NO. _____	DATE _____
BY _____	BY _____
DATE _____	DATE _____
NO. _____	NO. _____
NO. _____	NO. _____
NO. _____	NO. _____
NO. _____	NO. _____



FILE NAME =	USER NAME = #USER#	DESIGNED - DB	REVISED -	STATE OF ILLINOIS DEPARTMENT OF TRANSPORTATION	CROSS SECTIONS			F.A.P. RTE. 697	SECTION (171)	COUNTY FORD	TOTAL SHEETS 29	SHEET NO. 29
#FILEL#	PLOT SCALE = #SCALE#	DRAWN - NS	REVISED -		SCALE: 1"=10'	SHEET NO. 4 OF 4 SHEETS	STA. 53+00 TO STA. 55+00	CONTRACT NO. 66874				
	PLOT DATE = #DATE#	CHECKED - AS	REVISED -		FED. ROAD DIST. NO. ILLINOIS FED. AID PROJECT							
		DATE - DECEMBER 2008	REVISED -									