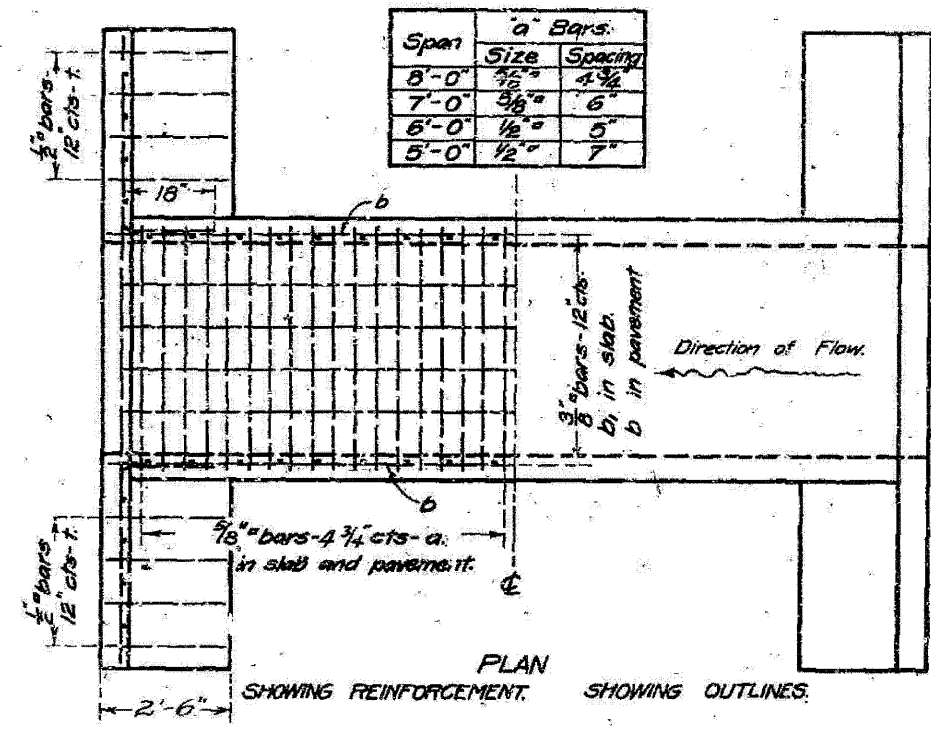
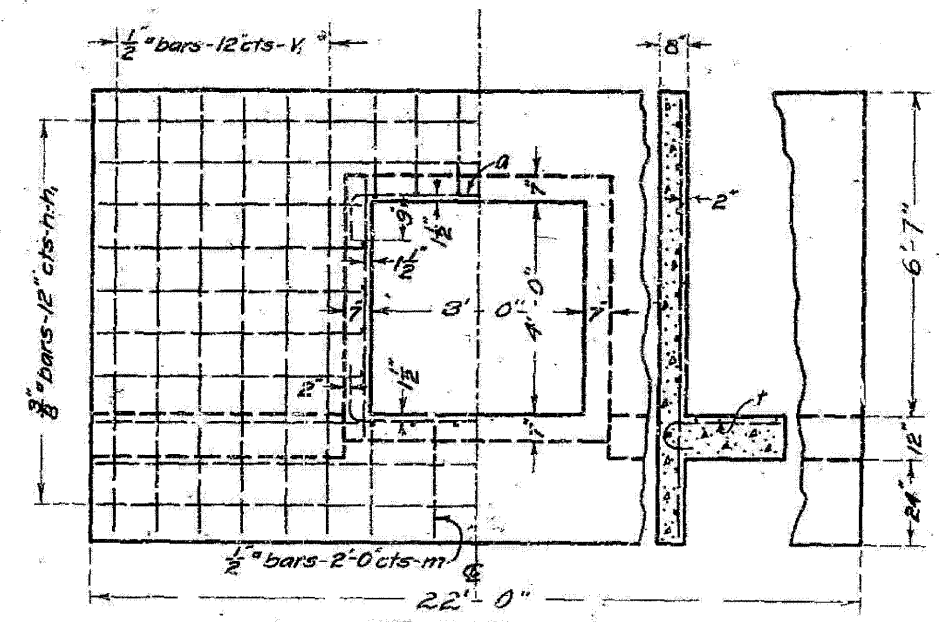
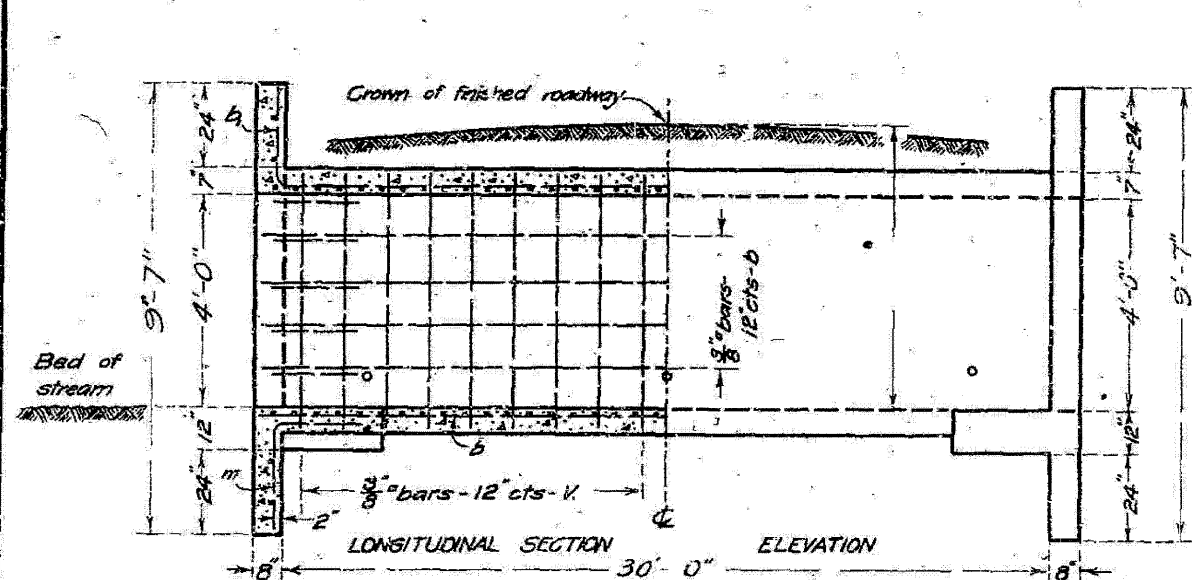


STATE OF ILLINOIS
STATE HIGHWAY DEPARTMENT
REINFORCED CONCRETE BOX CULVERT



Note: Use 'm' bars in downstream headwall only.
Box is designed for no fill.
Maximum clearance = 7'-6"

BILL OF MATERIAL

Bars	No.	Size	Length
v	60	3/8"	5'-0"
v _i	24	1/2"	9'-0"
h	8	3/8"	2'-6"
h _i	20	3/8"	8'-6"
a	156	3/8"	10'-0"
b	32	3/8"	16'-6"
b _i	16	3/8"	18'-0"
?	24	1/2"	3'-0"
m	4	1/2"	5'-0"
Steel - Lbs.		3030	
Concrete - Cu. Yds.		27.6	

Class A concrete to be used throughout
Proportions 1-2 1/4 - 4

COMPUTED - Walter J. Judd
CHECKED - W. J. Judd
DRAWN - W. J. Judd
CHECKED - W. J. Judd
ASSEMBLED - W. J. Judd
CHECKED - W. J. Judd
EXAMINED -
BRIDGE ENGINEER -
APPROVED - 16
STATE HIGHWAY ENGINEER -

EXISTING PLANS FOR INFORMATION ONLY

STR. 027-2536

618-20