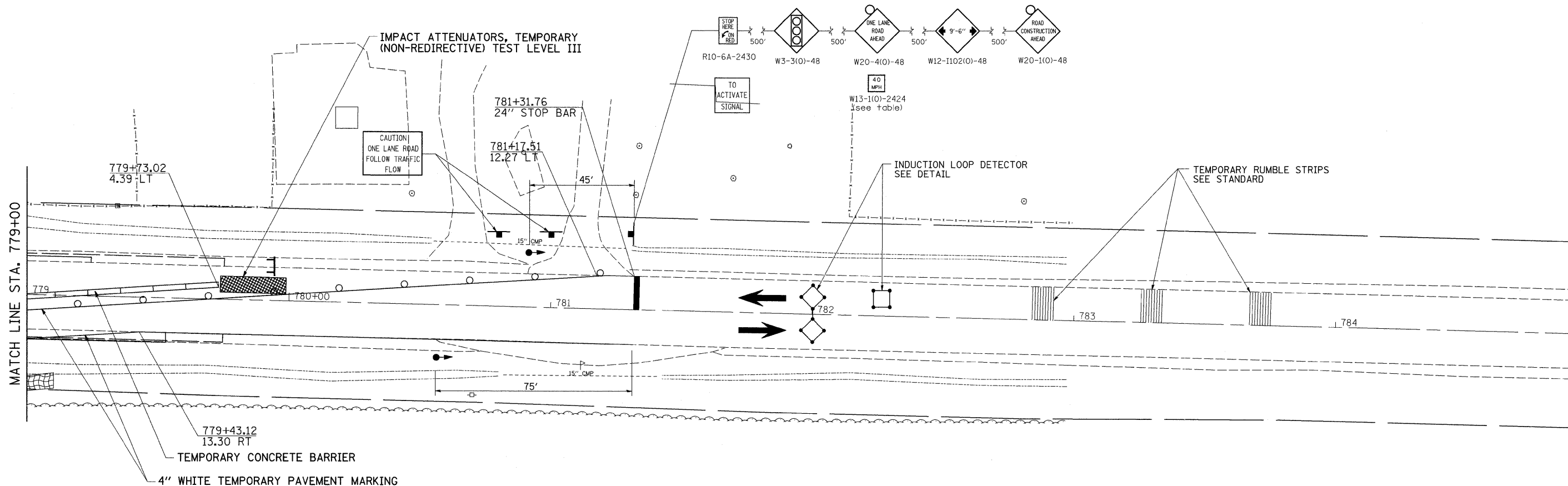


# STAGE 3



### STAGE 3 NOTES

1. USE STANDARD 701321 FOR CULVERT WORK.
2. CLOSE FROG POND ROAD DURING STAGE 3 CONSTRUCTION.
3. CONSTRUCT DOWNSTREAM SECTIONS OF CULVERT INCLUDING END SECTION, RIP-RAP, FENCING, AND EARTHWORK.
4. REMOVE ONLY TEMPORARY SHOULDER IN PATCH, REMAINDER TO STAY IN PLACE.
5. PLACE CLASS C PATCH OVER PATCH AREA.
6. ADDITIONAL SIGNING REQUIRED FOR SIDE ROAD AND DRIVEWAY.

|  |   |
|--|---|
|  | = WORK AREA                                     |
|  | = TYPE III BARRICADE WITH FLASHING LIGHTS       |
|  | = SIGN  |
|  | = BARRICADE, OR DRUM WITH STEADY BURNING LIGHTS |
|  | = INDUCTION LOOP DETECTOR                       |
|  | = TRAFFIC SIGNAL                                |

|  |                      |            |           |
|--|----------------------|------------|-----------|
| FILE NAME =                                      | USER NAME = hansonke | DESIGNED - | REVISED - |
| c:\pw_work\FWIDOT\HENSONKE\dms34455\d1506stg.dgn |                      | DRAWN -    | REVISED - |
| PLOT SCALE = 20.0000 // IN.                      |                      | CHECKED -  | REVISED - |
| PLOT DATE = Tue Dec 02 13:33:40 2008             |                      | DATE -     | REVISED - |

**STATE OF ILLINOIS  
DEPARTMENT OF TRANSPORTATION**

### STAGING PLANS

SCALE: SHEET NO. OF SHEETS STA. TO STA.

|                     |         |        |                           |           |
|---------------------|---------|--------|---------------------------|-----------|
| F.A.P. RTE.         | SECTION | COUNTY | TOTAL SHEETS              | SHEET NO. |
| 611                 | 103T-2  | HENRY  | 35                        | 17        |
| FED. ROAD DIST. NO. |         |        | ILLINOIS FED. AID PROJECT |           |
| CONTRACT NO. 64C66  |         |        |                           |           |