

F.A. RTE.	SECTION	COUNTY	TOTAL SHEETS	SHEET NO.
---	08-00067-00-RS	COOK	15	1
STA.	---	TO STA.	---	
FED. ROAD DIST. NO.	ILLINOIS	FED. AID PROJECT		
CONTRACT NO. 63103				

INDEX OF SHEETS

SHEET NO.	DESCRIPTION
1	TITLE SHEET
2	GENERAL NOTES AND IDOT STANDARDS
3	SUMMARY OF QUANTITIES
4	TYPICAL SECTIONS
5 - 6	PROPOSED PLAN - WOLF ROAD
7 - 8	PROPOSED PLAN - VILLAGE DRIVE
9 - 10	PROPOSED PLAN - DICKENS AVENUE
11	CONSTRUCTION DETAILS
12	CURB OR CURB AND GUTTER REMOVAL AND REPLACEMENT
13	BUTT JOINT AND HMA TAPER DETAILS
14	DISTRICT ONE TYPICAL PAVEMENT MARKINGS
15	TRAFFIC CONTROL AND PROTECTION FOR SIDE ROADS, INTERSECTIONS, AND DRIVEWAYS

**STATE OF ILLINOIS
DEPARTMENT OF TRANSPORTATION
DIVISION OF HIGHWAYS**

PLANS FOR PROPOSED FEDERAL AID HIGHWAY

**WOLF ROAD (FAU 2690) - FROM LAKE ST. TO NORTH AV.
VILLAGE DRIVE - FROM LaPORTE AV. TO ROY AV.
DICKENS AVENUE - FROM ROBERTA AV. TO GENEVA AV.**

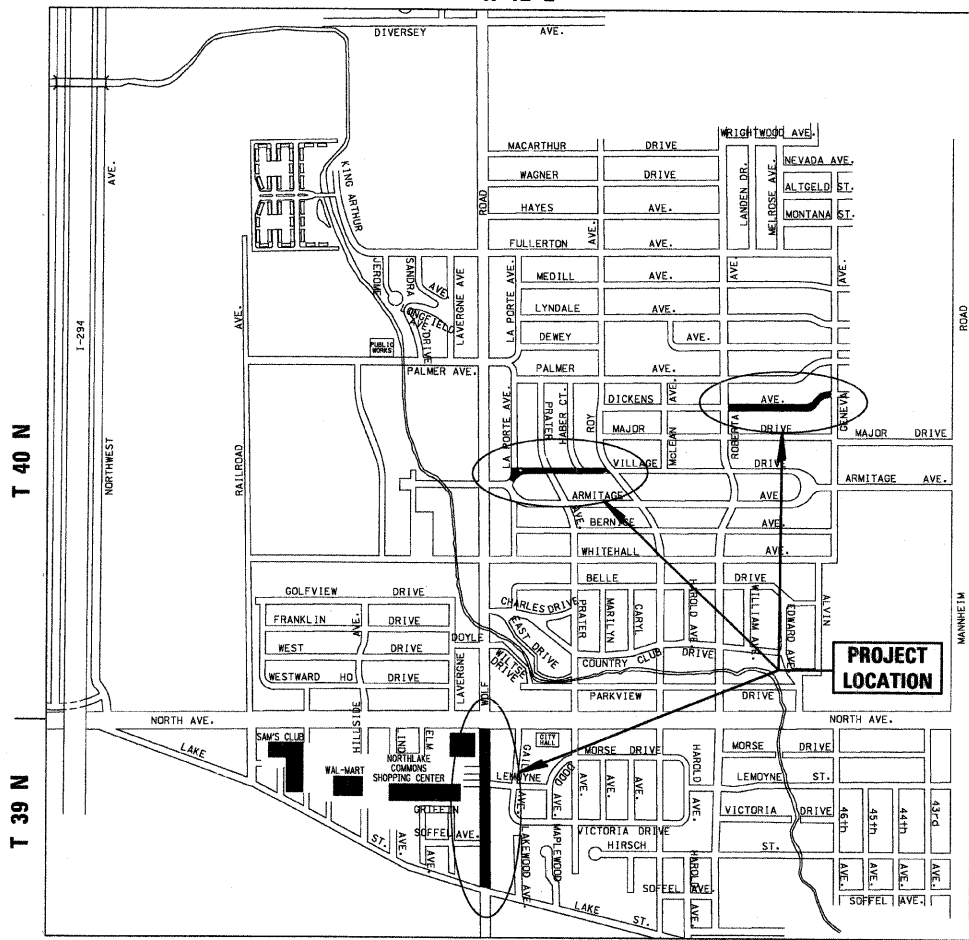
**Section No.: 08-00067-00-RS
STREET RESURFACING**

Project No.: HD-M-9003 (024)

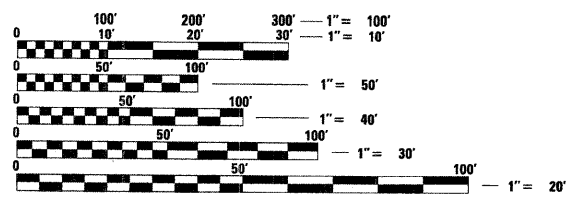
**CITY OF NORTHLAKE
COOK COUNTY**

JOB NO.: C-91-406-08

R 12 E



THE CONTRACTOR SHALL BE SOLELY RESPONSIBLE FOR JOB SITE SAFETY AS WELL AS SUPERVISION/DIRECTION AND MEANS/METHODS OF CONSTRUCTION.



FULL SIZE PLANS HAVE BEEN PREPARED USING STANDARD ENGINEERING SCALES. REDUCED SIZED PLANS WILL NOT CONFORM TO STANDARD SCALES. IN MAKING MEASUREMENTS ON REDUCED PLANS, THE ABOVE SCALES MAY BE USED.

J.U.L.I.E.
JOINT UTILITY LOCATION INFORMATION FOR EXCAVATION
811

TRAFFIC DATA
WOLF ROAD
ADT (YEAR) = 8900 (2008)
SPEED LIMIT = 35 MPH

VILLAGE DRIVE AND DICKENS AVENUE
ADT (YEAR) = 600 (2008)
SPEED LIMIT = 25 MPH

DESIGN DESIGNATION
VILLAGE DRIVE AND DICKENS AVENUE -
RESIDENTIAL COLLECTOR STREET

WOLF ROAD - ARTERIAL

**STATE OF ILLINOIS
DEPARTMENT OF TRANSPORTATION
DIVISION OF HIGHWAYS**

APPROVED 11/12 20 2008
[Signature] MAYOR
CITY OF NORTHLAKE

PASSED JANUARY 7 20 09
[Signature] DISTRICT 1 ENGINEER OF LOCAL ROADS AND STREETS

RELEASING FOR
BID BASED ON
LIMITED REVIEW JANUARY 8, 2009

Diane M. O'Keefe
DEPUTY DIRECTOR OF HIGHWAYS
REGION ONE ENGINEER



PRINTED BY THE AUTHORITY OF THE STATE OF ILLINOIS

11/12 2008

JASON G. SOUDEN
ILLINOIS REGISTRATION No. 062-050850 ENGINEER
EXPIRATION DATE: 11/30/09

CHRISTOPHER B. BURKE ENGINEERING L.T.D.
9575 West Higgins Road, Suite 600
Rosemont, Illinois 60018
(847) 823-0500

MARILYN SOLOMON
201 W. CENTER COURT
SCHAMBURG, ILLINOIS 60196-1096
(847) 705-4407

CONTRACT NO. 63103

LOCATION MAP - PROVISO TOWNSHIP
GROSS LENGTH OF PROJECT = 4413 LINEAL FEET (0.84 MI.)
NET LENGTH OF PROJECT = 4413 LINEAL FEET (0.84 MI.)